

762

974.905

044.4

P-1

DEPARTMENT OF HUMAN SERVICES

INTER-OFFICE COMMUNICATION

DATE February 20, 1998

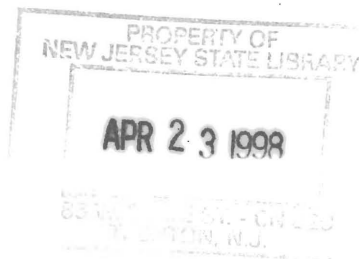
TO William Waldman
Commissioner

FROM Karen Highsmith
Director



SUBJECT CURRENT PROGRAM STATISTICS

Attached please find CURRENT PROGRAM STATISTICS for December 1997. Included are TANF-oriented data, the WFNJ Statistical summary and TANF participation rates. Should you have any questions, please feel free to call me.



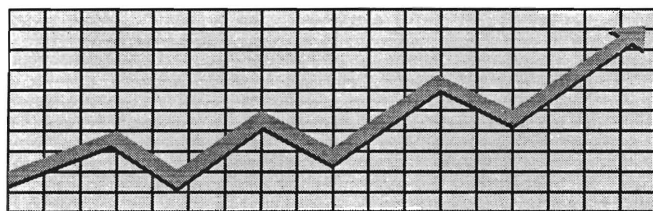
KH:kas:c

Attachments

c Miller
Facciarossa
Grant
Guhl
Tencza

**State of New Jersey
Department of Human Services
Division of Family Development**

CURRENT PROGRAM STATISTICS



December 1997

Karen Highsmith, Director

CURRENT PROGRAM STATISTICS

December 1997

TABLE OF CONTENTS	Page
Highlights of Current Program Statistics	1-3
Statistics by County, December 1997	
Table 1 TANF	4
Graph 1 Total TANF Families	4
Table 2 Food Stamp Program	5
Graph 2 Food Stamp Households/Persons	5
Table 3 TANF/SSI Emergency Assistance Program	6
Graph 3 TANF Families Receiving Emergency Assistance	6
Table 4 WFNJ Statistical Summary	7
State Summary, 1995 - 1997	
Table 5 TANF/AFDC, December 1995 - December 1997	8
Graph 4 Families Receiving TANF/AFDC, 12/95 - 12/97	8
Table 6 Food Stamp Program, December 1995 - December 1997	9
Graph 5 Food Stamp Households, 12/95 - 12/97	9
Graph 6 Food Stamp Recipients, 12/95 - 12/97	10
Table 7 TANF/AFDC Emergency Assistance Program, December 1995 - December 1997	11
Graph 7 TANF/AFDC Families Receiving Emergency Assistance, 12/95 - 12/97	11
Table 8 TANF Participation Rates, by County and Statewide, May 1997 - December 1997	12
Graph 8 TANF Participation Rates, 5/97 - 12/97	13
Table 9 General Assistance, and GA Emergency Assistance, September 1995 - September 1997	14
Graph 9 General Assistance Recipients, 9/95-9/97	14
Table 10 Child Support and Paternity, Federal Fiscal Years 1997-1998	15
Explanatory Notes	16-17
Supplement	
Table 11 WFNJ General Assistance Recipients and EA Payments by County and Municipality, September 1997	18
Table 12 Child Support and Paternity Cases Remaining Open, Quarter Ending December 1997	19

Highlights of **CURRENT PROGRAM STATISTICS**

TANF

(Tables 1 and 5, Graphs 1 and 4)

As of the end of December 1997, 85,100 eligible families in New Jersey were receiving TANF cash assistance.

- 81,500 single head of household families
- 3600 two-parent families

The largest number of TANF families receiving cash assistance, by county:

(55.5 percent of all TANF families)

- 23,746 Essex
- 13,523 Hudson
- 9,931 Camden

The number of TANF cash assistance families in other counties ranged from:

- 77 families in Hunterdon County to 5,993 in Passaic County,
with seven below 1000 families

There were about 1500 fewer eligible TANF families receiving cash assistance in December 1997 than in November 1997, with a decline of more than 26,000, or 23.8 percent, over the number of AFDC families receiving cash assistance two years ago.

- **Single head families:** 1300 fewer were eligible in December 1997 than in November 1997 and close to 24,000 below two years ago.
- **Two parent families:** declined from more than 6300 in December 1995 to about 3600 in December 1997.

FOOD STAMP PROGRAM

(Tables 2 and 6, Graphs 2, 5, and 6)

At the end of December 1997, less than 182,000 households were participating in the Food Stamp Program.

- **TANF:** Less than 83,000 households with about 263,000 persons.
- **Other low income:** 99,000 households with about 149,000 persons.
- **Total persons:** About 412,500, including 194,500 adults and 218,000 children
- **By County:** 49.4 percent of the households were in:

Essex	47,100
Hudson	25,000
Camden	17,700

The number of Food Stamp households in New Jersey remained in the 220,000 to 223,000 range from September 1995 through June 1996. Thereafter Food Stamp households declined substantially (from about 220,000 in June 1996 to 185,000 or less in August through December 1997).

- About **110,000 Other Low Income** households and **AFDC/TANF** households each received Food Stamps in December 1995, and the former has exceeded the latter each month since. **Other Low Income** households peaked close to **115,000** in May 1996 and had declined to about **100,000** or less in August through December 1997. There was a steady decline to less than **83,000 TANF(FS)** households by December 1997.
- **Total FS Recipients:** in the last two years, peaked at almost **516,000** in March 1996, and declined to less than **412,500** by December 1997, a drop of more than **100,000**, or **20 percent**.
- **Adult FS Recipients:** peaked at close to **248,000** in March 1996, and were down by more than **53,000 (21.5 percent)** at **194,500** in December 1997.
- **Recipient FS Children:** declined by about **50,000 (18.6 percent)**, from about **268,000** in December 1995 to about **218,000** in December 1997.

EMERGENCY ASSISTANCE

(Tables 3, 7 and 9, Graphs 3, 7 and 9)

In December 1997 Emergency Assistance (EA) payments were made for 3003 eligible TANF families and 195 SSI recipients in New Jersey. For TANF families this included payments for:

- **Temporary Rental Assistance (TRA)** for **910** families
- **Motel** placements for **172** families and **emergency shelter** placements for **256** families
- **All other TANF-EA** for **1677** families (including back rent, back utilities, security deposits, furnishings, clothing and food allowance, or transitional housing)
- **1,047** families in **Essex County**, **315** in **Passaic County**, **275** in **Bergen County**, **228** in **Middlesex County**, and for **less than 200** TANF families in each of the other counties.

In the past two years, the average number of EA payments for TANF/AFDC families was 5800 in 1995, 4800 in 1996, and less than 3600 for 1997.

- **TRA** payments declined by more than **50 percent** from over **1,800** per month in December 1995 to about **900** in December 1997, the second consecutive month under **1000**.
- Families receiving **Emergency Shelter** payments averaged **369** per month in 1995, **345** in 1996, and **293** in 1997. Under **200** in November, they returned to the September/October levels in December 1997.
- **Motel payments** were made for an average of **405** families per month in 1995, **320** in 1996, and **240** in 1997. December 1997 was the second consecutive month under **200**.
- Families receiving **Other EA** payments averaged **2779** per month in 1995, **2388** in 1996, and **1762** in 1997. Under **1400** in November, they returned to the July-October levels in December 1997.

For 1995 there were an average of 7400 GA EA recipients, and 6800 for 1996. Of those, GA TRA payments were made to an average of 4400 recipients in 1995, and 4100 in 1996. For the first nine months of 1997 there were an average of less than 6800 GA EA payments (which is less than the comparable period in 1996), and less than 4100 GA TRA payments.

TANF PARTICIPATION RATES

(Table 8, Graph 8)

In December 1997 the Statewide TANF participation rate was 46.9 percent. This is an increase of more than 3 percentage points over November, and almost *three times* the rate of May 1997. These rates are based on the new formulation mandated by the 1996 federal welfare reform legislation establishing Temporary Assistance to Needy Families (TANF), which went into effect with the implementation of Work First New Jersey welfare reform.

- County rates were distributed as follows:
 - 20.0 to 29.9 percent -- Essex
 - 30.0 to 39.9 percent -- Mercer
 - 40.0 to 49.9 percent -- Camden, Hudson, Passaic, Union
 - 50.0 to 59.9 percent -- Monmouth
 - 60.0 to 69.9 percent -- Bergen, Gloucester, Ocean, Warren
 - 70.0 to 79.9 percent -- Cumberland
 - 80.0 to 89.9 percent -- Atlantic, Salem
 - 90.0 to 99.9 percent -- Burlington, Middlesex, Somerset
 - 100 percent -- Cape May, Hunterdon, Morris, Sussex

GENERAL ASSISTANCE

(Table 9, Graph 9)

There were less than 28,000 GA recipients in September 1997 (remaining the latest available data), the lowest level in the past two years. Most of the decline has been among employable GA recipients. The GA total was nearly 3000 below September 1996 and 4000 below September 1995.

- **Employable GA** recipients reached a peak in March 1996 of more than **23,500**. There have been less than **21,000** every month since June 1996, and less than **18,000** since July 1997.
- **Unemployable GA** recipients remained close to **11,000** over the past two years.

CHILD SUPPORT AND PATERNITY

(Table 10)

In the first quarter of FFY 1998 (October 1997 - December 1997), the total distribution of collections of the Child Support and Paternity Program increased to \$145.8 million, compared to \$136.4 million in the same quarter in FFY 1997 (October 1996 - December 1996).

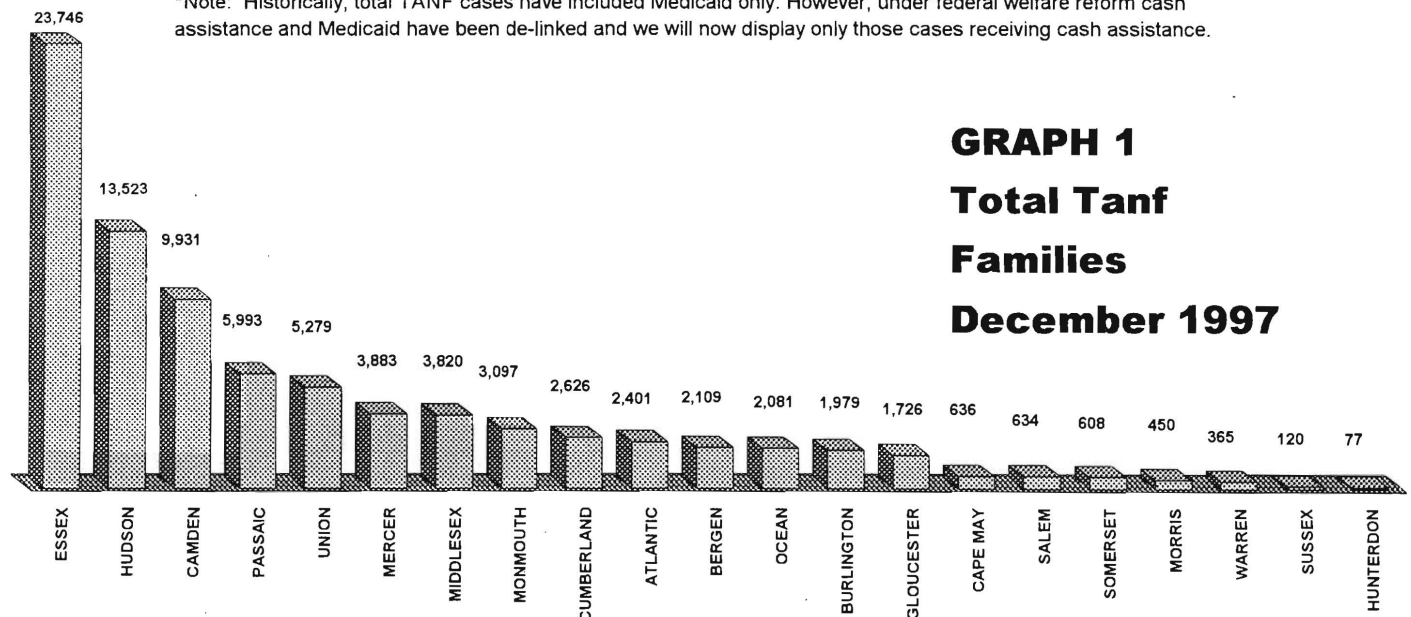
Table 1
TANF
PROGRAM

**NUMBER OF APPLICATIONS AND TERMINATIONS DURING REPORT MONTH, AND
AND NUMBER OF ELIGIBLE FAMILIES RECEIVING CASH ASSISTANCE UNDER
TANF AT END OF REPORT MONTH**

December 1997

County	Applications Approved	Terminations	Single Head Families	Two Parent Families	Total TANF*
ATLANTIC	167	225	2,348	53	2,401
BERGEN	99	132	1,961	148	2,109
BURLINGTON	152	209	1,881	98	1,979
CAMDEN	587	747	9,365	566	9,931
CAPE MAY	78	68	567	69	636
CUMBERLAND	183	284	2,407	219	2,626
ESSEX	630	760	23,336	410	23,746
GLOUCESTER	128	171	1,639	87	1,726
HUDSON	321	514	12,897	626	13,523
HUNTERDON	14	13	72	5	77
MERCER	189	225	3,759	124	3,883
MIDDLESEX	239	348	3,533	287	3,820
MONMOUTH	141	212	2,981	116	3,097
MORRIS	29	46	433	17	450
OCEAN	154	172	1,910	171	2,081
PASSAIC	217	369	5,626	367	5,993
SALEM	74	73	610	24	634
SOMERSET	63	101	562	46	608
SUSSEX	15	32	115	5	120
UNION	231	355	5,109	170	5,279
WARREN	24	57	341	24	365
NJ TOTAL	3,735	5,113	81,452	3,632	85,084

*Note: Historically, total TANF cases have included Medicaid only. However, under federal welfare reform cash assistance and Medicaid have been de-linked and we will now display only those cases receiving cash assistance.



Data is derived from NJ Division of Family Development's FAMIS report #FF-012

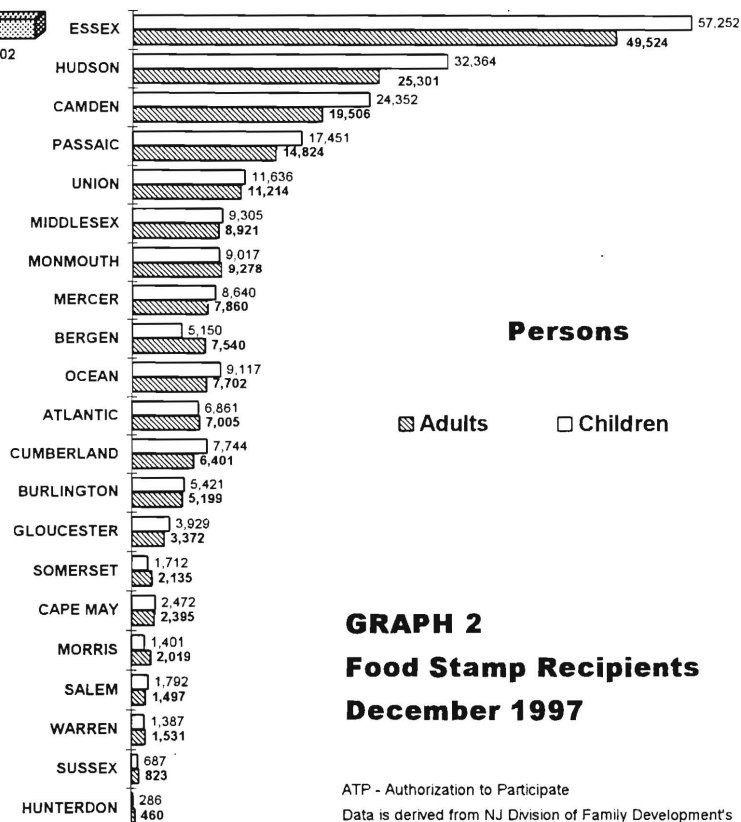
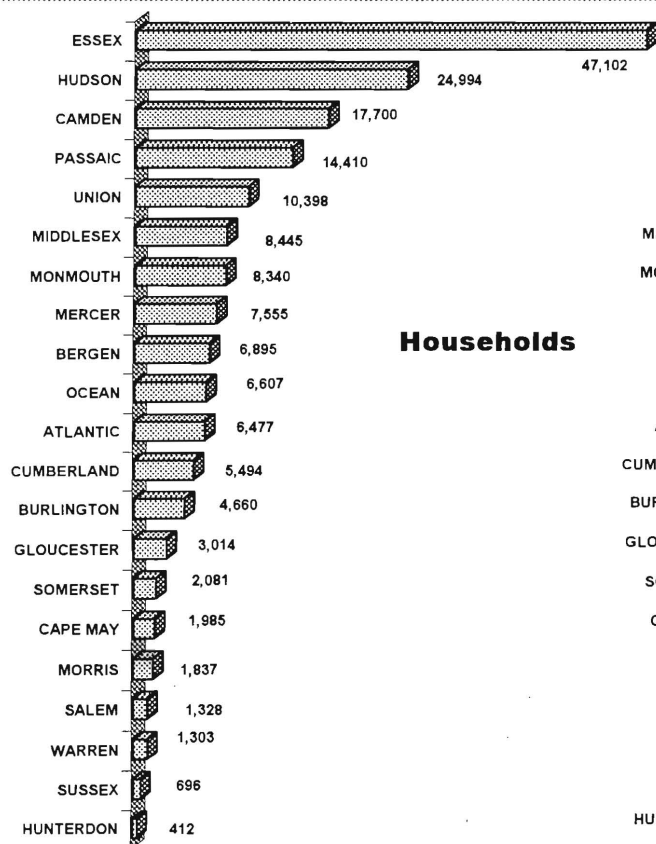
Table 2

**NUMBER OF ATP'S ISSUED TO HOUSEHOLDS, PERSONS, ADULTS
AND CHILDREN AT THE END OF THE REPORT MONTH**

**FOOD STAMP
PROGRAM**

December 1997

County	HOUSEHOLDS			PERSONS				
	TANF	Other low income	TOTAL	TOTAL	TANF	Other low income	Adults	Children
ATLANTIC	2,312	4,165	6,477	13,866	7,689	6,177	7,005	6,861
BERGEN	1,851	5,044	6,895	12,690	5,401	7,289	7,540	5,150
BURLINGTON	1,951	2,709	4,660	10,620	6,136	4,484	5,199	5,421
CAMDEN	9,669	8,031	17,700	43,858	32,049	11,809	19,506	24,352
CAPE MAY	819	1,166	1,985	4,867	2,858	2,009	2,395	2,472
CUMBERLAND	2,906	2,588	5,494	14,145	9,895	4,250	6,401	7,744
ESSEX	23,098	24,004	47,102	106,776	72,823	33,953	49,524	57,252
GLOUCESTER	1,588	1,426	3,014	7,301	5,035	2,266	3,372	3,929
HUDSON	13,211	11,783	24,994	57,665	39,938	17,727	25,301	32,364
HUNTERDON	74	338	412	746	235	511	460	286
MERCER	3,454	4,101	7,555	16,500	10,955	5,545	7,860	8,640
MIDDLESEX	3,743	4,702	8,445	18,226	11,386	6,840	8,921	9,305
MONMOUTH	3,025	5,315	8,340	18,295	9,979	8,316	9,278	9,017
MORRIS	453	1,384	1,837	3,420	1,388	2,032	2,019	1,401
OCEAN	2,508	4,099	6,607	16,819	8,562	8,257	7,702	9,117
PASSAIC	5,590	8,820	14,410	32,275	18,353	13,922	14,824	17,451
SALEM	650	678	1,328	3,289	2,162	1,127	1,497	1,792
SOMERSET	608	1,473	2,081	3,847	1,814	2,033	2,135	1,712
SUSSEX	155	541	696	1,510	519	991	823	687
UNION	4,555	5,843	10,398	22,850	14,707	8,143	11,214	11,636
WARREN	415	888	1,303	2,918	1,362	1,556	1,531	1,387
NJ TOTAL	82,635	99,098	181,733	412,483	263,246	149,237	194,507	217,976

**GRAPH 2**

**Food Stamp Recipients
December 1997**

ATP - Authorization to Participate
Data is derived from NJ Division of Family Development's
FAMIS report # FE-160.

Table 3
TANF/SSI**NUMBER OF ELIGIBLE FAMILIES RECEIVING EMERGENCY ASSISTANCE PAYMENTS**
(UNDUPLICATED CASES)**EMERGENCY**
ASSISTANCE

December 1997

County	TANF Families Receiving Emergency Assistance					SSI
	TOTAL TANF-EA	Temporary Rental Assist.	Motel Housing	Emergency Shelter	Other TANF-EA	Recipients Receiving EA
ATLANTIC	59	21	18	8	12	24
BERGEN	275	124	28	41	82	14
BURLINGTON	32	1	0	18	13	0
CAMDEN	142	45	10	13	74	12
CAPE MAY	19	6	0	1	12	2
CUMBERLAND	22	0	0	3	19	0
ESSEX	1,047	412	6	70	559	31
GLOUCESTER	70	24	0	26	20	3
HUDSON	99	24	6	3	66	4
HUNTERDON	2	0	1	0	1	2
MERCER	172	78	16	0	78	2
MIDDLESEX	228	36	18	8	166	31
MONMOUTH	152	61	5	5	81	1
MORRIS	5	0	0	2	3	4
OCEAN	149	51	35	1	62	28
PASSAIC	315	2	5	26	282	18
SALEM	21	6	1	0	14	1
SOMERSET	58	5	4	16	33	7
SUSSEX	12	4	3	0	5	2
UNION	115	10	2	11	92	8
WARREN	9	0	2	4	3	1
NJ TOTAL	3,003	910	160	256	1,677	195

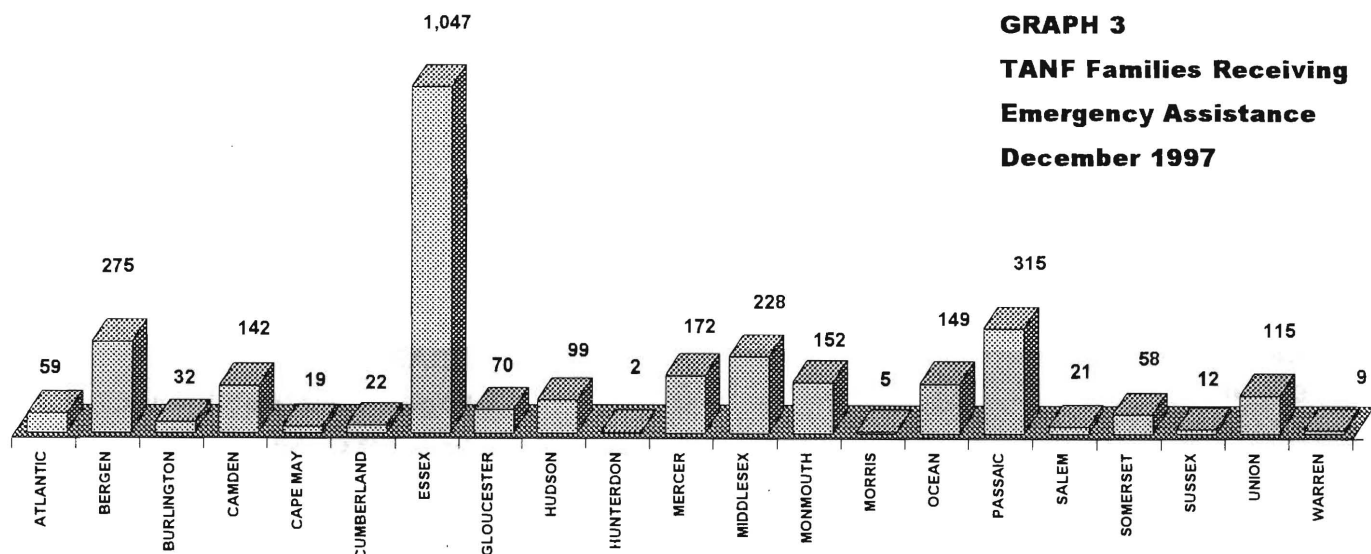


TABLE 4**WORK FIRST NEW JERSEY STATISTICAL SUMMARY****WFNJ****December 1997**

COUNTY	TOTAL NONEXEMPT RECIPIENTS	EMPLOYMENT DIRECTED ACTIVITIES			EMPLOYED OPEN (TANF RECIPIENT)	CHILD CARE ON ACTIVE CASE	EMPLOYED CLOSED	POST TANF CHILD CARE
		CWEP	ALL OTHER TRAINING	JOB SEARCH				
ATLANTIC	1,157	149	240	79	336	130	37	174
BERGEN	1,297	161	113	59	325	173	51	102
BURLINGTON	891	347	71	342	307	149	75	236
CAMDEN	5,898	452	609	1,157	1,585	650	212	420
CAPE MAY	356	80	15	31	106	31	30	36
CUMBERLAND	1,408	190	172	220	304	165	97	174
ESSEX	15,541	1,305	1,790	574	1,449	1,713	196	288
GLOUCESTER	781	116	54	193	197	105	55	110
HUDSON	9,007	1,239	1,646	207	1,066	1,114	156	451
HUNTERDON	24	0	11	7	16	7	10	11
MERCER	2,174	274	356	79	280	285	69	204
MIDDLESEX	1,931	85	432	537	651	187	123	195
MONMOUTH	1,892	147	222	80	448	361	74	248
MORRIS	173	74	60	168	62	59	21	56
OCEAN	991	63	99	392	180	124	77	210
PASSAIC	3,736	984	785	106	459	404	95	171
SALEM	315	54	90	45	76	96	10	43
SOMERSET	324	78	98	13	133	60	28	55
SUSSEX	50	27	28	18	42	21	17	55
UNION	2,959	94	1,388	218	345	321	119	153
WARREN	221	72	10	9	34	20	33	24
STATE	51,126	5,991	8,289	4,534	8,401	6,175	1,585	3,416

Data is derived from NJ Division of Family Development's FAMIS reports

Table 5
TANF/AFDC
PROGRAM

**NUMBER OF APPLICATIONS AND TERMINATIONS DURING REPORT MONTH, AND
AND NUMBER OF ELIGIBLE FAMILIES RECEIVING CASH ASSISTANCE UNDER
TANF/AFDC AT END OF REPORT MONTH**

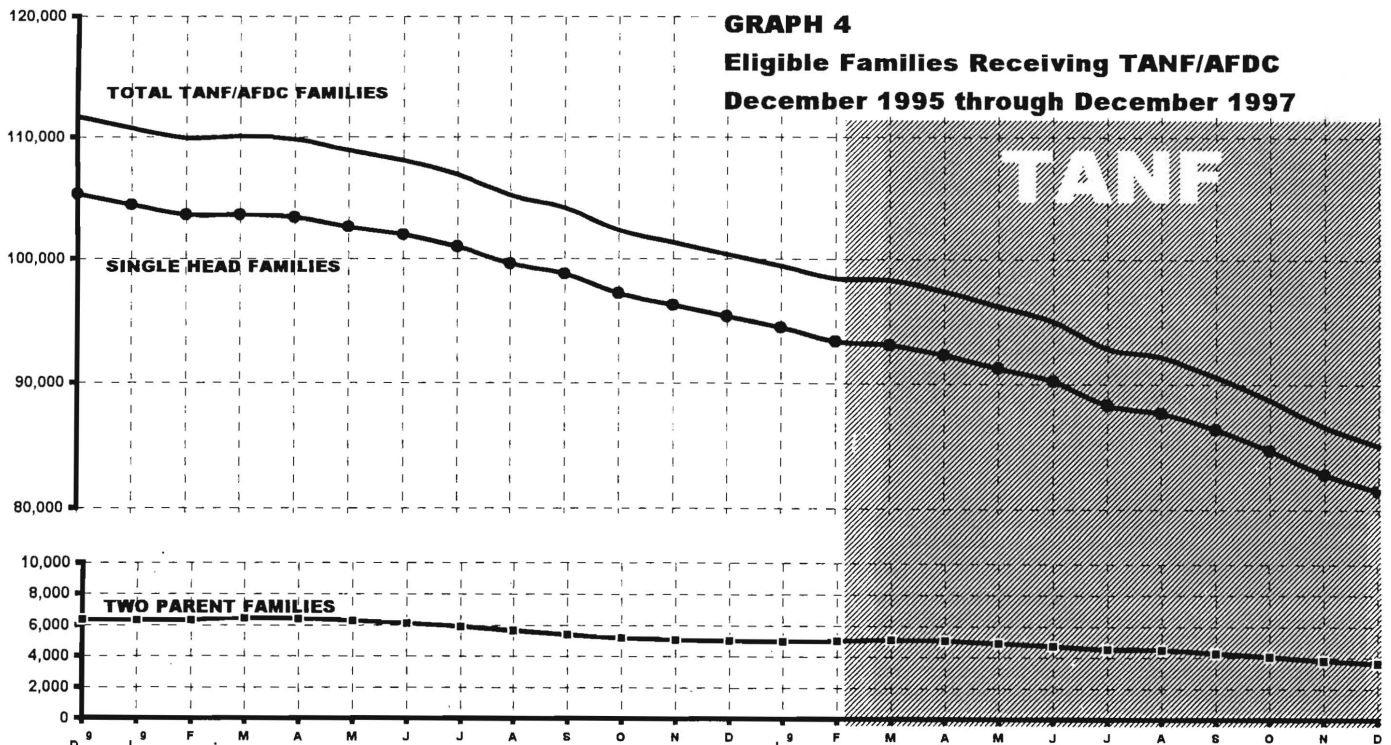
December 1995 through December 1997

		Applications Approved	Terminations	Single Head Families	Two Parent Families	Total TANF/AFDC*
AFDC 1995	DEC	5,582	5,775	105,287	6,354	111,641
AVERAGE (12 mos.)		5,956	6,460	107,376	6,863	114,239
1996	JAN	5,332	6,236	104,430	6,312	110,742
	FEB	5,217	6,283	103,561	6,331	109,892
	MAR	6,317	6,302	103,598	6,447	110,045
	APR	6,896	7,241	103,352	6,403	109,755
	MAY	5,335	6,152	102,600	6,275	108,875
	JUN	5,319	6,121	101,947	6,116	108,063
	JUL	5,874	7,027	100,968	5,916	106,884
	AUG	5,014	6,789	99,567	5,631	105,198
	SEP	6,311	7,440	98,744	5,395	104,139
	OCT	5,213	7,015	97,152	5,190	102,342
	NOV	5,374	6,549	96,238	5,081	101,319
	DEC	5,018	6,137	95,322	5,016	100,338
AVERAGE		5,602	6,608	100,623	5,843	106,466
1997	JAN	5,933	6,803	94,429	4,982	99,411
TANF	FEB	4,410	5,728	93,359	5,010	98,369
	MAR	6,184	6,416	93,104	5,125	98,229
	APR	5,172	6,034	92,300	5,049	97,349
	MAY	4,882	6,121	91,290	4,893	96,183
	JUN	4,620	5,760	90,223	4,748	94,971
	JUL	5,240	7,344	88,306	4,522	92,828
	AUG	4,637	5,388	87,670	4,484	92,154
	SEP	5,542	6,982	86,346	4,263	90,609
	OCT	4,488	6,276	84,669	4,045	88,714
	NOV	5,655	7,385	82,764	3,825	86,589
	DEC	3,735	5,113	81,452	3,632	85,084
AVERAGE (incl. JAN)		5,042	6,279	88,826	4,548	93,374

GRAPH 4

Eligible Families Receiving TANF/AFDC

December 1995 through December 1997



Data is derived from NJ Division of Family Development's FAMIS report #FF-012

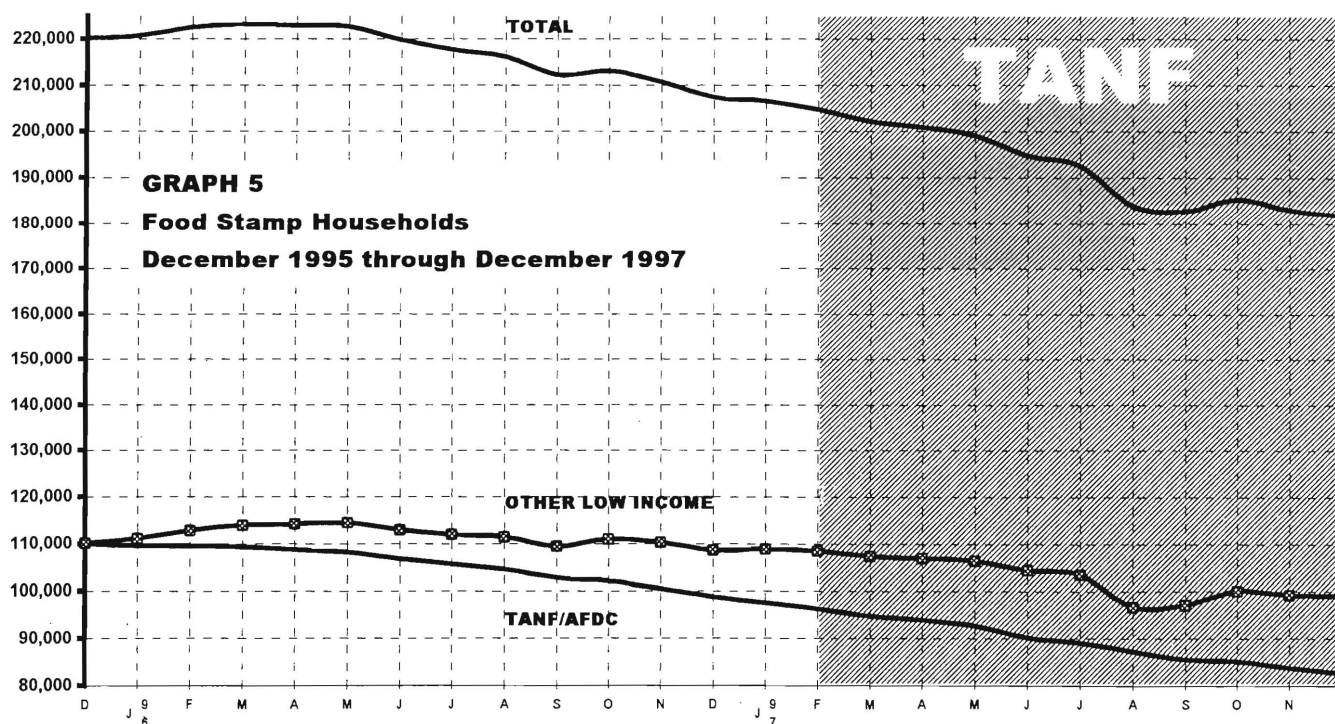
*Note: Historically, total TANF/AFDC cases have included Medicaid only. However, under federal welfare reform cash assistance and Medicaid have been de-linked and we will now display only those cases receiving cash assistance.

Table 6
FOOD STAMP
PROGRAM

NUMBER OF ATP'S ISSUED TO HOUSEHOLDS, PERSONS, ADULTS
AND CHILDREN AT THE END OF THE REPORT MONTH

December 1995 through December 1997

		HOUSEHOLDS			PERSONS				
		TANF/AFDC	Other low income	TOTAL	TOTAL	TANF/AFDC	Other low income	Adults	Children
AFDC 1995	DEC	109,992	110,155	220,147	511,727	343,955	167,772	243,965	267,762
AVERAGE (12 mos.)		112,211	109,290	221,500	519,170	351,916	167,254	245,892	273,279
1996	JAN	109,554	111,166	220,720	512,165	342,778	169,387	244,801	267,364
	FEB	109,649	112,813	222,462	515,181	343,314	171,867	246,961	268,220
	MAR	109,364	113,895	223,259	515,676	342,361	173,315	247,695	267,981
	APR	108,787	114,163	222,950	514,375	340,597	173,778	247,380	266,995
	MAY	108,205	114,458	222,663	513,213	338,891	174,322	246,918	266,295
	JUN	106,875	112,888	219,763	506,926	334,762	172,164	243,422	263,504
	JUL	105,653	112,023	217,676	501,575	331,157	170,418	240,840	260,735
	AUG	104,568	111,473	216,041	497,436	328,055	169,381	238,804	258,632
	SEP	102,827	109,441	212,268	488,765	322,572	166,193	234,442	254,323
	OCT	102,088	111,008	213,096	489,991	321,226	168,765	235,401	254,590
	NOV	100,411	110,254	210,665	484,378	317,163	167,215	232,756	251,622
	DEC	98,729	108,617	207,346	477,693	312,869	164,824	229,191	248,502
AVERAGE		105,559	111,850	217,409	501,448	331,312	170,136	240,718	260,730
1997	JAN	97,555	108,961	206,516	475,374	310,342	165,032	228,388	246,986
	FEB	96,279	108,462	204,741	471,576	307,066	164,510	226,570	245,006
	MAR	94,787	107,331	202,118	465,920	303,052	162,868	223,576	242,344
	APR	93,845	107,008	200,853	462,303	300,073	162,230	221,538	240,765
	MAY	92,593	106,369	198,962	457,430	296,327	161,103	219,003	238,427
	JUN	90,218	104,441	194,659	447,417	288,957	158,460	213,692	233,725
	JUL	89,029	103,449	192,478	441,141	284,541	156,600	210,029	231,112
	AUG	87,165	96,714	183,879	421,881	276,940	144,941	197,418	224,463
	SEP	85,609	97,112	182,721	417,728	272,043	145,685	195,800	221,928
	OCT	85,116	100,077	185,193	420,626	270,376	150,250	198,347	222,279
	NOV	83,803	99,197	183,000	415,821	266,436	149,385	196,009	219,812
	DEC	82,635	99,098	181,733	412,483	263,246	149,237	194,507	217,976
AVERAGE		89,886	103,185	193,071	442,475	286,617	155,858	210,406	232,069



ATP - Authorization to Participate

Data is derived from NJ Division of Family Development's FAMIS report # FB-160.

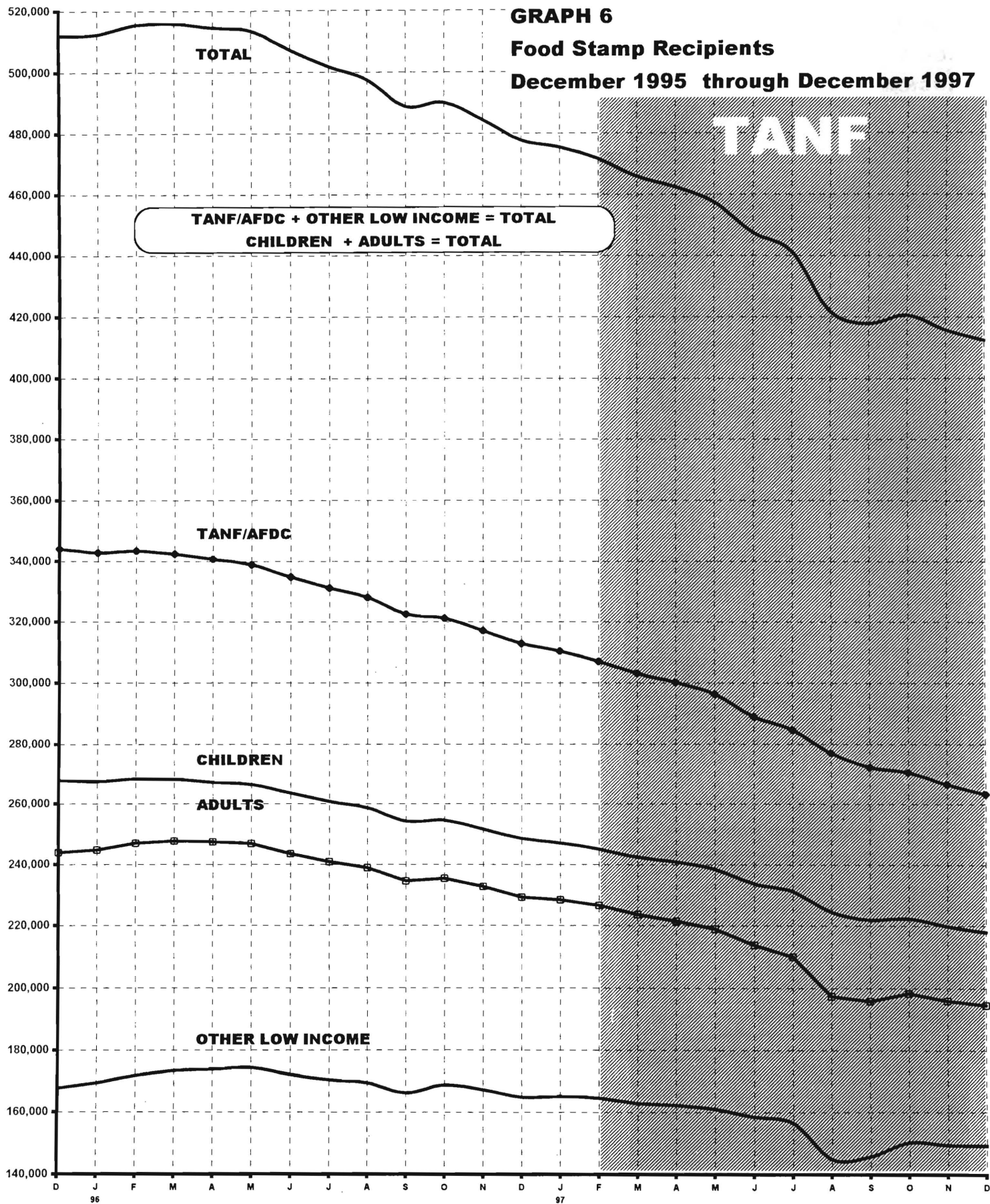


Table 7

NUMBER OF ELIGIBLE FAMILIES RECEIVING EMERGENCY ASSISTANCE PAYMENTS

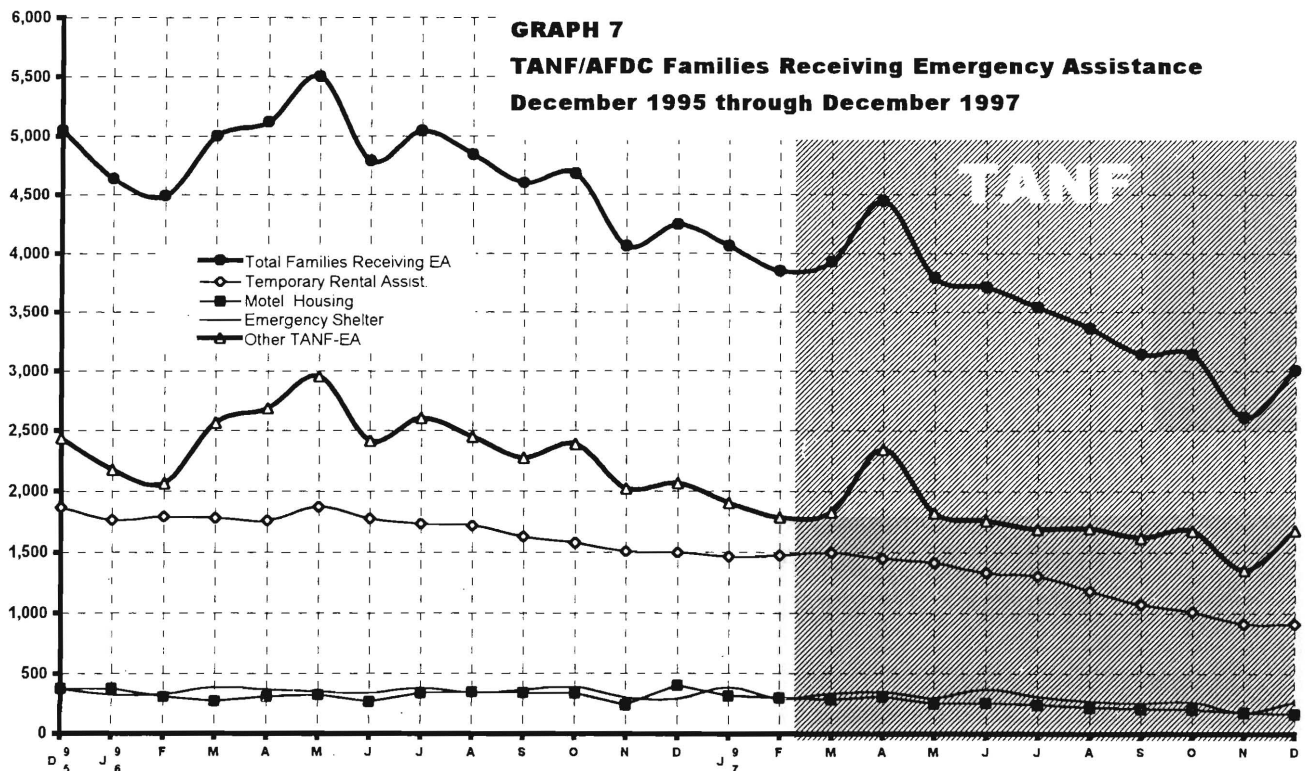
TANF/AFDC

(UNDUPLICATED CASES)

EMERGENCY ASSISTANCE

December 1995 through December 1997

	Total Families Receiving EA	Temporary Rental Assistance	Motel Housing	Emergency Shelter	Other TANF/AFDC-EA
AFDC 1995 DEC	5,048	1,864	377	369	2,438
AVERAGE (12 mos.)	5,755	2,201	405	369	2,779
1996 JAN	4,639	1,761	374	325	2,179
FEB	4,490	1,788	305	330	2,067
MAR	5,001	1,779	270	388	2,564
APR	5,118	1,760	309	364	2,685
MAY	5,498	1,873	323	350	2,952
JUN	4,791	1,772	266	341	2,412
JUL	5,044	1,729	335	377	2,603
AUG	4,845	1,716	346	339	2,444
SEP	4,600	1,625	337	362	2,276
OCT	4,683	1,576	334	385	2,388
NOV	4,059	1,507	237	294	2,021
DEC	4,244	1,492	400	286	2,066
AVERAGE	4,751	1,698	320	345	2,388
1997 JAN	4,059	1,462	310	382	1,905
FEB	3,847	1,473	296	292	1,786
MAR	3,926	1,494	278	327	1,827
APR	4,440	1,447	309	342	2,342
MAY	3,788	1,416	250	298	1,824
JUN	3,711	1,336	251	365	1,759
JUL	3,538	1,308	238	306	1,686
AUG	3,360	1,181	217	269	1,693
SEP	3,140	1,069	202	250	1,619
OCT	3,142	1,009	201	259	1,673
NOV	2,606	909	172	171	1,354
DEC	3,003	910	160	256	1,677
AVERAGE	3,547	1,251	240	293	1,762



Data derived from NJ Division of Family Development FAMIS Report #FM457 and #FM430-03a.

Table 8**TANF PARTICIPATION RATES****May 1997 - December 1997**

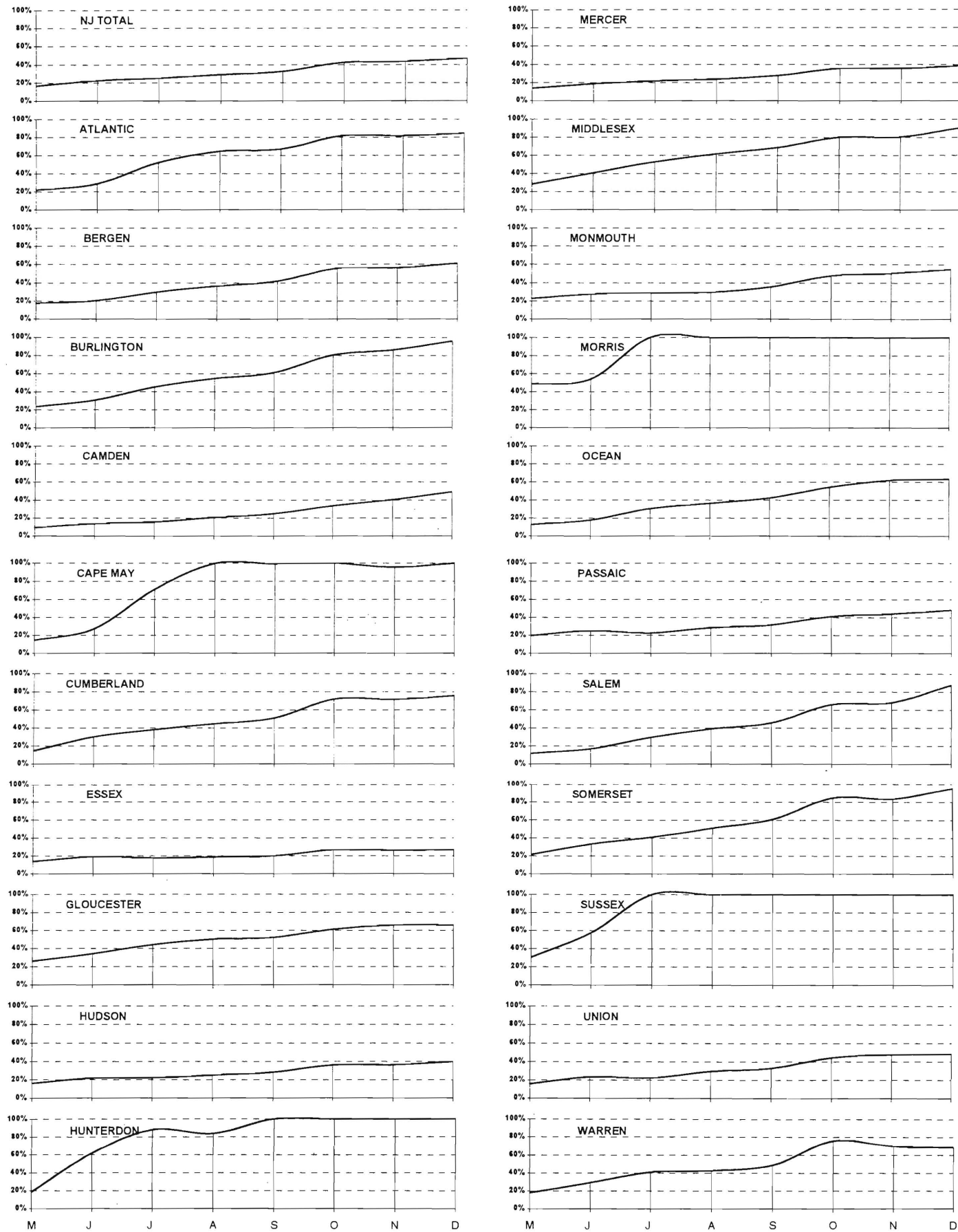
County	May	June	July	August	September	October	November	December
ATLANTIC	21.9%	28.8%	52.1%	64.5%	66.9%	81.4%	81.6%	84.1%
BERGEN	17.3%	20.5%	29.6%	36.3%	41.6%	55.6%	56.1%	61.1%
BURLINGTON	23.6%	30.7%	45.4%	54.6%	61.0%	80.6%	85.9%	95.8%
CAMDEN	9.3%	13.9%	15.8%	20.8%	25.0%	33.6%	40.4%	49.0%
CAPE MAY	14.4%	27.2%	71.0%	99.7%	99.2%	100.0%	95.7%	100.0%
CUMBERLAND	14.6%	30.0%	38.1%	44.7%	51.2%	72.0%	71.6%	75.9%
ESSEX	13.9%	19.0%	17.9%	18.8%	20.1%	26.8%	26.3%	27.0%
GLOUCESTER	26.1%	34.1%	44.3%	50.2%	52.3%	61.3%	65.9%	66.2%
HUDSON	16.2%	21.7%	22.1%	25.1%	28.3%	36.0%	36.4%	40.1%
HUNTERDON	18.4%	61.7%	88.4%	84.0%	100.0%	100.0%	100.0%	100.0%
MERCER	13.6%	18.4%	21.7%	23.7%	27.8%	35.3%	35.2%	38.5%
MIDDLESEX	28.2%	40.7%	52.8%	61.6%	68.6%	80.1%	80.6%	90.4%
MONMOUTH	22.7%	27.4%	29.1%	29.7%	35.6%	47.8%	50.6%	54.9%
MORRIS	48.7%	53.8%	100.0%	100.0%	100.0%	100.0%	100.0%	100.0%
OCEAN	12.6%	17.9%	30.5%	36.3%	42.5%	54.5%	61.9%	63.5%
PASSAIC	19.4%	25.1%	22.7%	28.6%	31.7%	41.3%	44.2%	48.2%
SALEM	11.7%	16.9%	29.6%	39.0%	45.8%	66.0%	68.3%	87.6%
SOMERSET	21.3%	33.3%	41.0%	51.2%	61.0%	84.8%	83.8%	95.4%
SUSSEX	30.5%	57.5%	100.0%	100.0%	100.0%	100.0%	100.0%	100.0%
UNION	15.7%	23.5%	22.3%	29.6%	32.9%	44.5%	47.9%	48.4%
WARREN	17.9%	29.3%	40.9%	42.8%	48.9%	75.9%	69.9%	68.8%
NJ TOTAL	16.3%	22.5%	25.1%	29.0%	32.3%	42.3%	43.5%	46.9%

The new Work First New Jersey participation rate formulation mandated by PRWORA, 1996 federal welfare reform legislation establishing Temporary Assistance to Needy Families (TANF)

Graph 8

TANF PARTICIPATION RATES

May 1997 - December 1997



**TABLE 9
GENERAL****NUMBER OF EMPLOYABLE AND UNEMPLOYABLE RECIPIENTS
AND EMERGENCY ASSISTANCE PAYMENTS DURING REPORT MONTH****ASSISTANCE
PROGRAM****September 1995 through September 1997**

	All Persons Aided			Emergency Assistance Payments		
	Employable	Unemployable	Total	Temporary Rental Assistance	Other GA-EA	Total
1995 SEP	21,525	10,389	31,914	4,110	2,945	7,055
OCT	21,913	10,959	32,872	3,939	3,497	7,436
NOV	22,206	10,171	32,377	4,141	2,422	6,563
DEC	22,732	10,268	33,000	4,086	2,902	6,988
AVERAGE (12 mos.)	22,094	11,178	33,611	4,420	2,947	7,368
1996 JAN	23,140	10,054	33,194	4,421	2,803	7,224
FEB	22,584	10,927	33,511	4,567	2,651	7,218
MAR	23,528	11,243	34,771	4,472	3,185	7,657
APR	23,028	11,221	34,249	4,490	2,944	7,434
MAY	22,657	11,054	33,711	4,064	2,947	7,011
JUN	20,785	10,667	31,452	4,283	2,716	6,999
JUL	20,546	10,282	30,828	3,754	2,922	6,676
AUG	20,416	10,552	30,968	3,958	2,448	6,406
SEP	19,895	10,741	30,636	3,905	2,597	6,502
OCT	19,310	10,514	29,824	3,894	2,728	6,622
NOV	20,019	10,508	30,527	3,662	2,166	5,828
DEC	19,582	10,369	29,951	3,725	2,574	6,299
AVERAGE	21,291	10,678	31,969	4,100	2,723	6,823
1997 JAN	19,562	10,809	30,371	4,182	3,029	7,211
WPNJ FEB	20,274	10,607	30,881	3,994	2,807	6,801
MAR	20,467	10,678	31,145	4,167	2,907	7,074
APR	20,612	11,305	31,917	4,184	2,930	7,114
MAY	18,938	10,758	29,696	4,137	2,789	6,926
JUN	18,218	10,913	29,131	3,850	2,580	6,430
JUL	17,823	10,908	28,731	4,174	2,872	7,046
AUG	17,505	10,685	28,190	3,884	2,377	6,261
SEP	17,441	10,506	27,947	3,906	2,415	6,321
AVERAGE	18,982	10,797	29,779	4,053	2,745	6,798

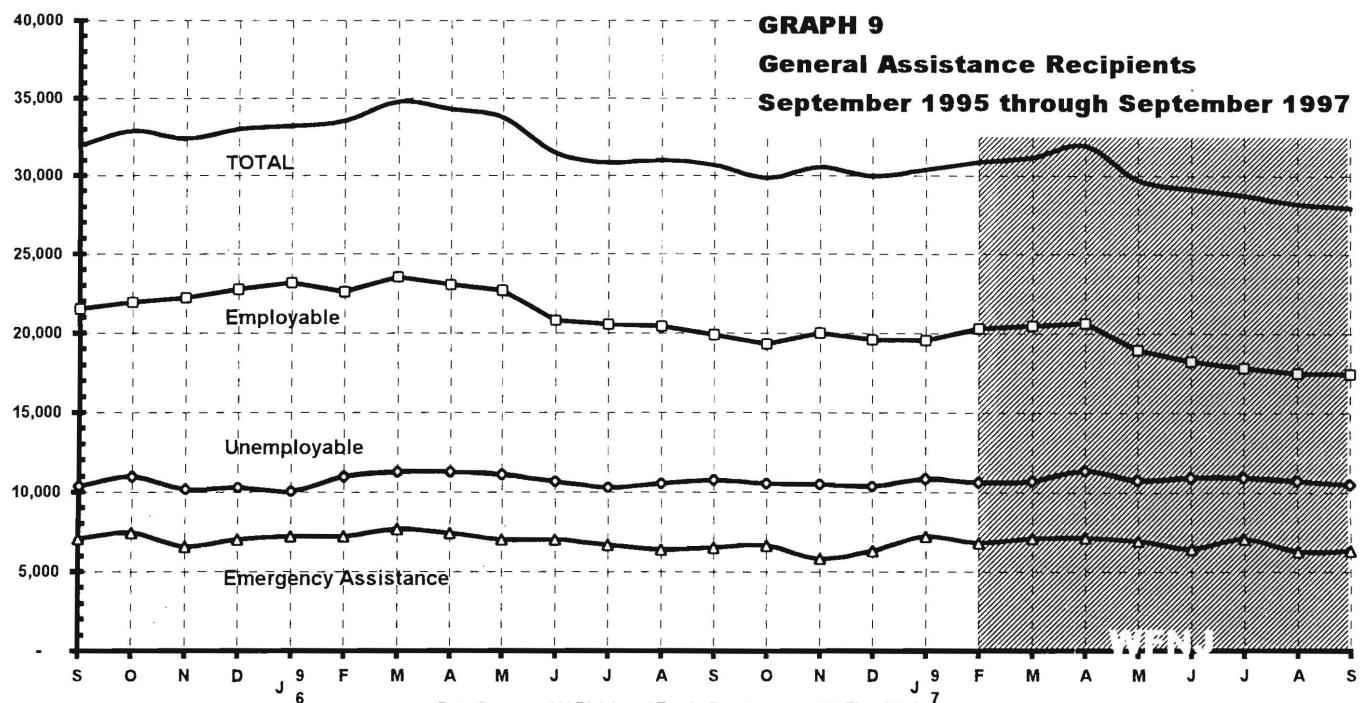


TABLE 10**CHILD SUPPORT
AND PATERNITY****CHILD SUPPORT AND PATERNITY COLLECTIONS****State Summary****Comparison of FFY 1997 and FFY 1998**

COLLECTION SOURCE	10/96-12/96	10/97-12/97	% change
AFDC & FOSTER CARE			
Federal Tax	\$534,028	\$592,657	10.98%
State Tax	645,410	427,767	-33.72%
Unempl. Ins. Ben.	1,294,894	767,166	-40.75%
Income Withholding	10,452,329	8,945,453	-14.42%
Other/Own Behalf	4,692,441	4,379,858	-6.66%
From Other States	911,344	1,020,369	11.96%
For Other States	2,068,445	1,781,489	-13.87%
TOTAL COLLECTION	\$20,598,891	\$17,914,759	-13.03%
TOTAL DISTRIBUTION	\$20,357,302	\$17,416,994	-14.44%
NON- AFDC			
Federal Tax	\$385,727	\$461,917	19.75%
State Tax	1,021,419	636,782	-37.66%
Unempl. Ins. Ben.	4,084,081	3,432,030	-15.97%
Income Withholding	66,165,214	74,094,161	11.98%
Other/Own Behalf	32,498,148	34,545,056	6.30%
From Other States	5,271,997	7,464,049	41.58%
For Other States	7,492,064	7,842,161	4.67%
TOTAL COLLECTION	\$116,918,650	\$128,476,156	9.89%
TOTAL DISTRIBUTION	\$116,006,072	\$127,391,462	9.81%
TOTAL			
Federal Tax	\$919,755	\$1,054,574	14.66%
State Tax	\$1,666,829	\$1,064,549	-36.13%
Unempl. Ins. Ben.	\$5,378,975	\$4,199,196	-21.93%
Income Withholding	\$76,617,543	\$83,039,614	8.38%
Other/Own Behalf	\$37,190,589	\$38,924,914	4.66%
From Other States	\$6,183,341	\$8,484,418	37.21%
For Other States	\$9,560,509	\$9,623,650	0.66%
TOTAL COLLECTION	\$137,517,541	\$146,390,915	6.45%
TOTAL DISTRIBUTION	\$136,363,374	\$144,808,456	6.19%

Distributed amount represents collections reported and recognized by the Federal Office of
 Child Support Enforcement for calculating incentives and annual report to Congress
 Source: DFD Office of Child Support and Paternity Programs

Explanatory Notes

The Department of Human Services Division of Family Development provides basic income and an opportunity to achieve self-sufficiency for individuals and families served by the Division's programs. The Division provides leadership, direction and supervision to those public agencies responsible for administering those programs and plans for and develops policies to promote self-sufficiency.

WORK FIRST NEW JERSEY (WFNJ) - Fully implemented July 1, 1997, this is New Jersey's welfare reform program which responds to the requirements of the Federal Personal Responsibility and Work Opportunity Reconciliation Act (PRWORA) of 1996. PRWORA establishes Temporary Assistance to Needy Families (**TANF**) as the replacement for AFDC. WFNJ includes two segments, WFNJ/TANF for families with children, and WFNJ/GA (General Assistance) for single adults and couples without dependent children. The emphasis is on achieving self-sufficiency and limits lifetime receipt of financial assistance to a total of five years.

WFNJ Statistical Summary (Table 4)

Total Non-Exempt Recipients - Calculation of the number of mandatory individuals (FAMIS report # FB304).

Employment Directed Activities (EDA) - From Activities Summary Report (OMEGA report # RM064). Unduplicated count of persons participating in Community Work Experience Program (**CWEP**), **All Other Training, or Job Search**.

Number of Persons Employed This Month, Still Receiving TANF - From Activities Summary Report (OMEGA report # RM064).

Participants Receiving Child Care Services - From Issuance Disbursement Summary (OMEGA report # RM703). Total number of active participants who show receipt of **Child Care**.

Number of Persons Closed on FAMIS Due to Employment- From FAMIS report # FM463.

Post TANF and Receiving Child Care - Persons no longer in receipt of TANF but still receiving child care. From Issuance Disbursement Summary (OMEGA report # RM703).

AID TO FAMILIES WITH DEPENDENT CHILDREN (AFDC) - Replaced by WFNJ/TANF July 1, 1997, AFDC provided financial assistance for dependent children and their natural or adoptive parents, or certain other relatives recognized as taking the place of a parent.

Regular AFDC (C Segment) - assistance when only one parent is in the home due to death or absence, or both parents are in the home but at least one is incapacitated.

Unemployed Parents (F Segment) - assistance when both parents are in the home, neither is incapacitated and the primary wage earner meets the federally defined criteria for unemployment.

State AFDC (N Segment) - assistance when both parents are in the home, neither is incapacitated, and the primary wage earner does not meet the federal definition of unemployment.

[Medicaid Only families, who had no longer received AFDC financial assistance but remained eligible for Medicaid under applicable provisions which extended coverage beyond the period of AFDC assistance, are no longer shown in these tables because cash assistance and Medicaid have been de-linked.]

FOOD STAMP PROGRAM (FS) - Authorized by Congress as a nutritional supplement program to provide low income households with more food of greater variety and better nutrition. Program eligibility is based on household income, resources, and expenses for medical, shelter, and dependent care. CWA staff refer certain recipients to the New Jersey Department of Labor for participation in the Food Stamp Employment and Training Program.

EMERGENCY ASSISTANCE (EA) - Payments to those eligible for WFNJ/TANF or WFNJ/GA, authorized during the 30 consecutive days immediately following the emergency (defined as a substantial loss of shelter, food, clothing, or household furnishings by fire, flood or other similar disaster) or if the eligible individual or family is in an imminent or actual state of homelessness.

TABLE 11
GENERAL
ASSISTANCE
PROGRAM

EMPLOYABLE AND UNEMPLOYABLE RECIPIENTS
AND EMERGENCY ASSISTANCE RECIPIENTS
COUNTIES AND 21 LARGEST MUNICIPALITIES

September 1997

County/ Municipality	Total Persons Aided			Emergency Assistance Payments		
	Employable	Unemployable	Total	Temporary Rental Assist.	Other GA-EA	Total
ATLANTIC	826	481	1,307	51	26	77
BERGEN	415	466	881	233	86	319
BURLINGTON	256	398	654	122	92	214
CAMDEN	1,895	1,151	3,046	196	199	395
CAPE MAY	45	82	127	14	7	21
CUMBERLAND	274	140	414	3	8	11
ESSEX	6,165	2,246	8,411	953	1,249	2,202
GLOUCESTER	133	146	279	20	18	38
HUDSON	769	1,086	1,855	161	23	184
HUNTERDON	50	61	111	26	12	38
MERCER	1,221	865	2,086	242	209	451
MIDDLESEX	385	478	863	76	26	102
MONMOUTH	429	564	993	238	30	268
MORRIS	70	176	246	38	15	53
OCEAN	435	339	774	271	100	371
PASSAIC	2,117	683	2,800	462	164	626
SALEM	120	69	189	9	29	38
SOMERSET	83	78	161	48	3	51
SUSSEX	31	48	79	17	5	22
UNION	1,687	884	2,571	707	113	820
WARREN	35	65	100	19	1	20
TOTAL NJ	17,441	10,506	27,947	3,906	2,415	6,321
Atlantic City	718	281	999	36	21	57
Mount Holly	103	97	200	44	63	107
Camden	1,665	800	2,465	136	148	284
Vineland	143	66	209	2	5	7
East Orange	423	358	781	196	23	219
Irvington	356	143	499	59	6	65
Montclair	101	62	163	29	12	41
Newark	4,856	1,448	6,304	589	1,203	1,792
Orange	311	70	381	48	0	48
Bayonne	102	65	167	3	0	3
Hoboken	94	130	224	17	1	18
Jersey City	464	483	947	83	17	100
Trenton	1,131	756	1,887	204	197	401
Perth Amboy	85	90	175	9	3	12
Asbury Park	139	81	220	45	7	52
Long Branch	56	102	158	35	1	36
Lakewood	241	119	360	160	12	172
Passaic	459	213	672	163	40	203
Paterson	1,587	325	1,912	255	101	356
Elizabeth	1,123	442	1,565	542	63	605
Plainfield	218	150	368	52	4	56
Total	14,375	6,281	20,656	2,707	1,927	4,634

Source: NJ Division of Family Development, GA Fiscal Unit

TABLE 12**CHILD SUPPORT
AND PATERNITY****NUMBER OF CASES REMAINING OPEN
QUARTER ENDING DECEMBER 1997**

	CASES WITH ORDERS			OTHER CASES (1)		TOTAL	TOTAL	TOTAL
	AFDC AND FOSTER CARE	AFDC AND FOSTER CARE ARREARS (2)	NON- AFDC	AFDC AND FOSTER CARE	NON- AFDC	AFDC AND FOSTER CARE	NON- AFDC	ALL CASES
Atlantic	1,831	4,477	9,886	2,495	3,411	8,803	13,297	22,100
Bergen	1,156	1,943	8,939	1,256	979	4,355	9,918	14,273
Burlington	1,585	3,267	10,802	1,914	2,158	6,766	12,960	19,726
Camden	7,705	11,046	21,782	6,001	4,471	24,752	26,253	51,005
Cape May	550	1,159	3,471	391	376	2,100	3,847	5,947
Cumberland	2,905	5,210	10,152	663	360	8,778	10,512	19,290
Essex	13,540	16,856	35,010	21,040	11,082	51,436	46,092	97,528
Gloucester	1,358	2,457	6,507	911	1,041	4,726	7,548	12,274
Hudson	6,359	7,982	19,309	7,894	7,079	22,235	26,388	48,623
Hunterdon	101	278	1,607	66	71	445	1,678	2,123
Mercer	3,847	5,929	12,194	2,829	2,271	12,605	14,465	27,070
Middlesex	2,339	5,260	14,978	2,618	2,200	10,217	17,178	27,395
Monmouth	2,983	4,959	12,557	1,946	1,980	9,888	14,537	24,425
Morris	325	561	3,983	516	561	1,402	4,544	5,946
Ocean	1,425	3,290	9,975	1,749	1,574	6,464	11,549	18,013
Passaic	4,555	5,801	15,554	4,958	4,663	15,314	20,217	35,531
Salem	807	1,476	3,304	276	138	2,559	3,442	6,001
Somerset	419	683	3,286	507	597	1,609	3,883	5,492
Sussex	196	471	2,003	171	209	838	2,212	3,050
Union	2,881	5,103	13,315	3,963	3,819	11,947	17,134	29,081
Warren	420	1,039	2,785	136	99	1,595	2,884	4,479
NJ TOTAL	57,287	89,247	221,399	62,300	49,139	208,834	270,538	479,372

Data Sources: Automated Child Support Enforcement System #CS199-3

(1) - Needing location, paternity, or other services to establish an obligation

(2) - Cases with arrears *only*