

974.905

044.4

C.1

DEPARTMENT OF HUMAN SERVICES

INTER-OFFICE COMMUNICATION

DATE October 27, 1997

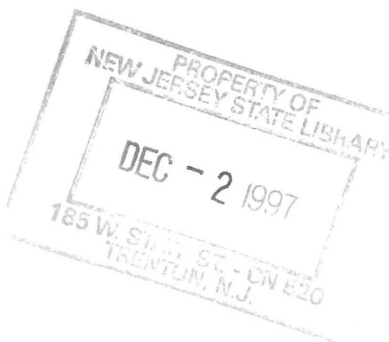
TO William Waldman
Commissioner

FROM Karen Highsmith
Director



SUBJECT CURRENT PROGRAM STATISTICS

Attached please find CURRENT PROGRAM STATISTICS for August 1997. Included are TANF-oriented data, the WFNJ Statistical summary and estimated TANF participation rates for May through August 1997. Also included is a revision of the July 1997 WFNJ Statistical Summary. Should you have any questions, please feel free to call me.



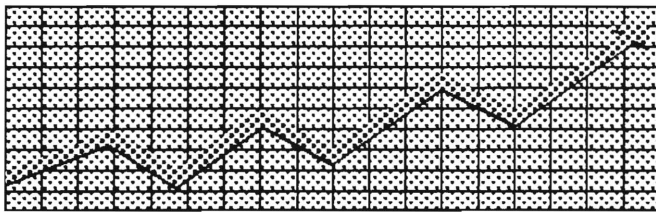
KH:kas:c

Attachments

c Guhl
Grant
Miller
Tencza

**State of New Jersey
Department of Human Services
Division of Family Development**

CURRENT PROGRAM STATISTICS



August 1997

Karen Highsmith, Director

State of New Jersey
Department of Human Services
Division of Family Development

CURRENT PROGRAM STATISTICS
August 1997

TABLE OF CONTENTS

	Page
Highlights of Current Program Statistics	1-3
 Statistics by County, August 1997	
Table 1 TANF.....	4
Graph 1 Current TANF Families.....	4
Table 2 Food Stamp Program.....	5
Graph 2 Current Food Stamp Households/Persons	5
Table 3 TANF/SSI Emergency Assistance Program.....	6
Graph 3 Current TANF Families Receiving Emergency Assistance	6
Table 4 WFNJ Statistical Summary.....	7
 State Summary, 1995 - 1997	
Table 5 TANF/AFDC, August 1995 - August 1997	8
Graph 4 Families Receiving AFDC, 8/95 - 8/97	8
Table 6 Food Stamp Program, August 1995 - August 1997	9
Graph 5 Food Stamp Households, 8/95 - 8/97	9
Graph 6 Food Stamp Recipients, 8/95 - 8/97.....	10
Table 7 TANF/AFDC Emergency Assistance Program, August 1995 - August 1997	11
Graph 7 TANF/AFDC Families Receiving Emergency Assistance, 8/95 - 8/97	11
Table 8 TANF Participation Rates, by County and Statewide, May 1997 - August 1997.....	12
Graph 8 TANF Participation Rates, 5/97 - 8/97	13
Table 9 General Assistance, and GA Emergency Assistance, June 1995 - June 1997	14
Graph 9 General Assistance Recipients, 6/95-6/97	14
Table 10 Child Support and Paternity, Federal Fiscal Years 1996-1997.....	15
Explanatory Notes.....	16-17
 Supplement	
Table 11 WFNJ General Assistance Recipients and EA Payments by County and Municipality, June 1997.....	18
Table 4 (Revised) July 1997 WFNJ Statistical Summary.....	19

Highlights of Current Program Statistics

TANF (Tables 1 and 5, Graphs 1 and 4)

About 97,000 eligible families in New Jersey were receiving TANF as of the end of August 1997:

- **87,700** single head of household families
- **4500** two-parent families
- **4900** Medicaid Only families.
- The largest numbers of families by county: Essex with **25,140**, Hudson with **15,425**, and Camden County with less than **11,588**. (53.8 percent of all TANF families). Other counties ranged from **123** families in Hunterdon to **6,422** in Passaic County, with seven counties below **1000** families.

There were about 600 fewer eligible TANF families in August 1997 than in July 1997, with a decline of close to 21,500, or about 18 percent, over the number of AFDC families two years ago.

- There were **600** fewer eligible single head families in August 1997 than in July 1997 and almost **19,000** less than two years ago.
- Two parent families declined from less than **6800** in August 1995 to about **4500** in August 1997.
- Medicaid Only families averaged nearly **5200** for 1995, and less than **4900** for the first eight months of 1997. There were nearly **200** less Medicaid Only families in August 1997 than a year earlier.

FOOD STAMP PROGRAM (Tables 2 and 6, Graphs 2, 5, and 6)

At the end of August 1997, less than 184,000 households were participating in the Food Stamp Program:

- About **87,000** TANF households with **277,000** persons.
- Less than **97,000** Other Low Income households with less than **145,000** persons.
- With a total of less than **422,000** persons, including **197,500** adults and **224,500** children
- **49.1 percent** of the households were in Essex (**47,800**), Hudson (**24,200**) and Camden (**18,400**) Counties.

The number of Food Stamp households in New Jersey remained in the 220,000 to 223,000 range from August 1995 through June 1996. Thereafter Food Stamp households declined substantially (from about 220,000 in June 1996 to less than 184,000 in August 1997).

- There have been fewer AFDC/TANF(FS) households than Other Low Income households receiving Food Stamps since November 1995, with a difference of close to **10,000** in July 1997. There were about **109,000** Other Low Income households in 1995, a peak close to **115,000** in May 1996, and a decline to less than **97,000** by August 1997 (with a drop of almost **7,000** from July to August). There were more than **111,000** AFDC(FS) households in August 1995 and only about **87,000** TANF(FS) in August 1997.
- From August 1995 through May 1996 there were about **515,000** Total Recipients. The level then dropped substantially and was less than **422,000** by August 1997, a decline of nearly **95,000** or more than **18 percent**.
- From a peak of about **247,000** Recipient Adults in February through May 1996, the number declined about **50,000** (**20 percent**) by August 1997.
- The number of Recipient Children declined by more than **47,000** (**17 percent**), from over **271,000** in August 1995 to less than **225,000** in August 1997.

EMERGENCY ASSISTANCE (Tables 3, 7 and 9, Graphs 3, 7 and 9)

In August 1997 Emergency Assistance (EA) payments were made for 3,360 eligible TANF families and 309 SSI recipients in New Jersey. For TANF families this included payments for:

- **1181 families with Temporary Rental Assistance (TRA)**
- **217 motel placements and 269 emergency shelter placements**
- **1693 families accounted for all other TANF-EA payments, including back rent, back utilities, security deposits, furnishings, clothing and food allowance, or transitional housing.**
- **EA payments were made for 956 TANF families in Essex County, for 430 in Passaic County, for 330 in Bergen County, and for less than 300 TANF families in each of the other counties.**

In the past two years, the average number of EA payments for TANF/AFDC families was 5800 in 1995, and 4800 in 1996. For the first eight months of 1997 the average was about 3800.

- **The number of TRA payments provided for TANF/AFDC families each month has declined steadily from more than 2,000 in August 1995 to less than 1200 in August 1997.**
- **Emergency Shelter payments have been provided for an average of 300 to 400 families each month in 1995, 1996 and the first eight months of 1997.**
- **Payments for Motel Housing declined from an average of 405 in 1995 to an average of 269 for the first eight months of 1997.**
- **Other EA payments were made for an average of nearly 2800 families in 1995, 2400 in 1996, and less than 1900 in the first eight months of 1997.**

For 1995 there were an average of 7400 GA EA recipients, and 6800 for 1996. Of those, GA TRA payments were made to an average of 4400 recipients in 1995, and 4100 in 1996. For the first half of 1997 there were an average of less than 7000 GA EA payments (which is less than the comparable period in 1996), and about 4100 GA TRA payments.

ESTIMATED TANF PARTICIPATION RATES (Table 8, Graph 8)

In August 1997 the estimated Statewide TANF participation rate was 29.0 percent. This is more than 13 percentage points higher than the estimate for May. These estimates are based on the new participation rate formulation mandated by the 1996 federal welfare reform legislation establishing Temporary Assistance to Needy Families (TANF), which went into effect with the implementation of Work First New Jersey welfare reform.

- **County rates were distributed as follows in August:**
 - 10.0 to 19.9 percent -- Essex**
 - 20.0 to 29.9 percent -- Camden, Hudson, Mercer, Monmouth, Passaic, Union**
 - 30.0 to 39.9 percent -- Bergen, Ocean, Salem**
 - 40.0 to 49.9 percent -- Cumberland, Warren**
 - 50.0 to 59.9 percent -- Burlington, Gloucester, Somerset**
 - 60.0 percent and over-- Atlantic, Cape May, Hunterdon, Middlesex, Morris, Sussex**

GENERAL ASSISTANCE (Table 9, Graph 9)

There were about 29,000 GA recipients in June 1997 (the latest available data), the lowest level in the past two years. Most of the decline has been among employable GA recipients. The GA total was 2000 less than in June 1996 and 4000 less than June 1995.

- **The number of employable GA recipients reached a peak in March 1996 of more than 23,500. There have been less than 21,000 every month since June 1996, and less than 19,000 in May and June 1997.**
- **The number of Unemployable GA recipients has remained between 10,000 and 12,000 over the past two years, and under 11,000 in every month except one since June 1996.**

CHILD SUPPORT AND PATERNITY (Table 10)

The total distribution of collections of the Child Support and Paternity Program increased from nearly \$395 million in the first nine months of FFY 1996 (October 1995 - June 1996) to nearly \$445 million in the first nine months of FFY 1997 (October 1996 - June 1997).

New Jersey Department of Human Services
Division of Family Development

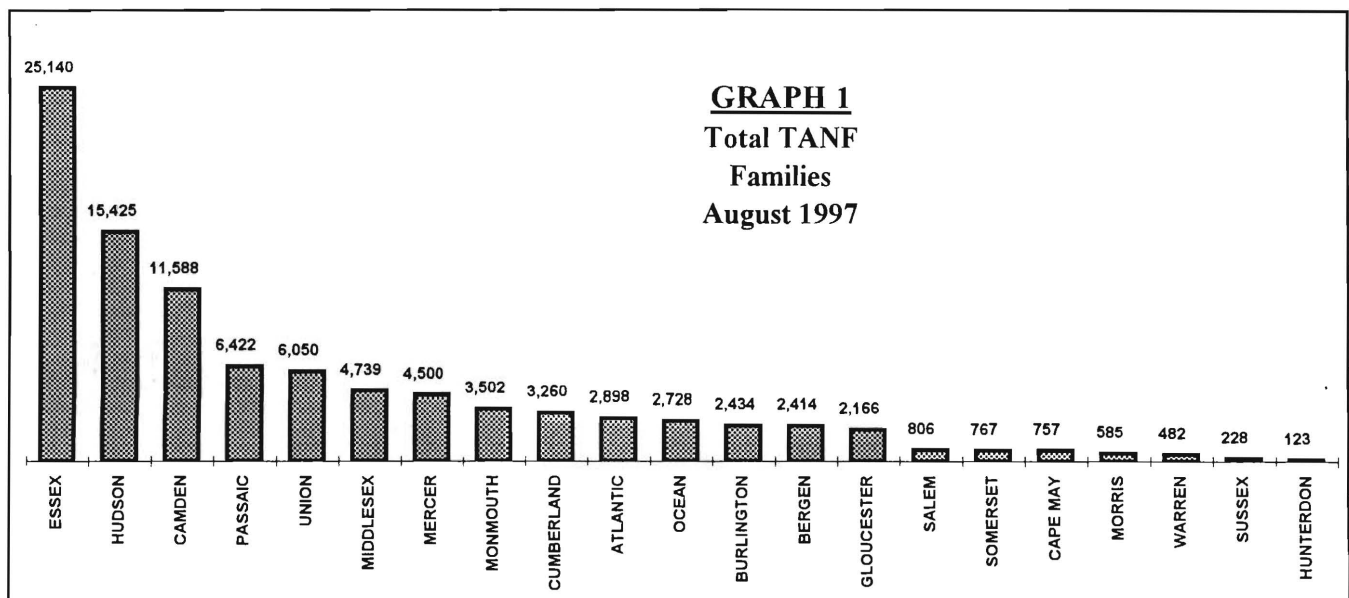
Table 1**TANF Program**

**NUMBER OF APPLICATIONS AND TERMINATIONS DURING REPORT MONTH, AND
NUMBER OF ELIGIBLE FAMILIES RECEIVING TANF AT END OF REPORT MONTH**

August 1997

County	Applications Approved	Terminations	Single Head Families	Two Parent Families	Medicaid Only	Total TANF
ATLANTIC	195	196	2,681	84	133	2,898
BERGEN	110	154	2,148	198	68	2,414
BURLINGTON	198	180	2,097	122	215	2,434
CAMDEN	611	659	10,197	648	743	11,588
CAPE MAY	46	118	617	73	67	757
CUMBERLAND	245	282	2,805	257	198	3,260
ESSEX	797	958	24,039	497	604	25,140
GLOUCESTER	177	216	1,790	124	252	2,166
HUDSON	540	556	13,880	716	829	15,425
HUNTERDON	17	13	85	9	29	123
MERCER	263	287	3,986	173	341	4,500
MIDDLESEX	262	333	3,948	379	412	4,739
MONMOUTH	162	228	3,256	176	70	3,502
MORRIS	47	62	523	29	33	585
OCEAN	181	228	2,252	238	238	2,728
PASSAIC	311	312	5,940	400	82	6,422
SALEM	75	106	731	30	45	806
SOMERSET	78	100	652	60	55	767
SUSSEX	17	33	179	6	43	228
UNION	271	329	5,453	230	367	6,050
WARREN	34	38	411	35	36	482
NJ TOTAL	4,637	5,388	87,670	4,484	4,860	97,014

Data is derived from NJ Division of Family Development's FAMIS report #FF-012



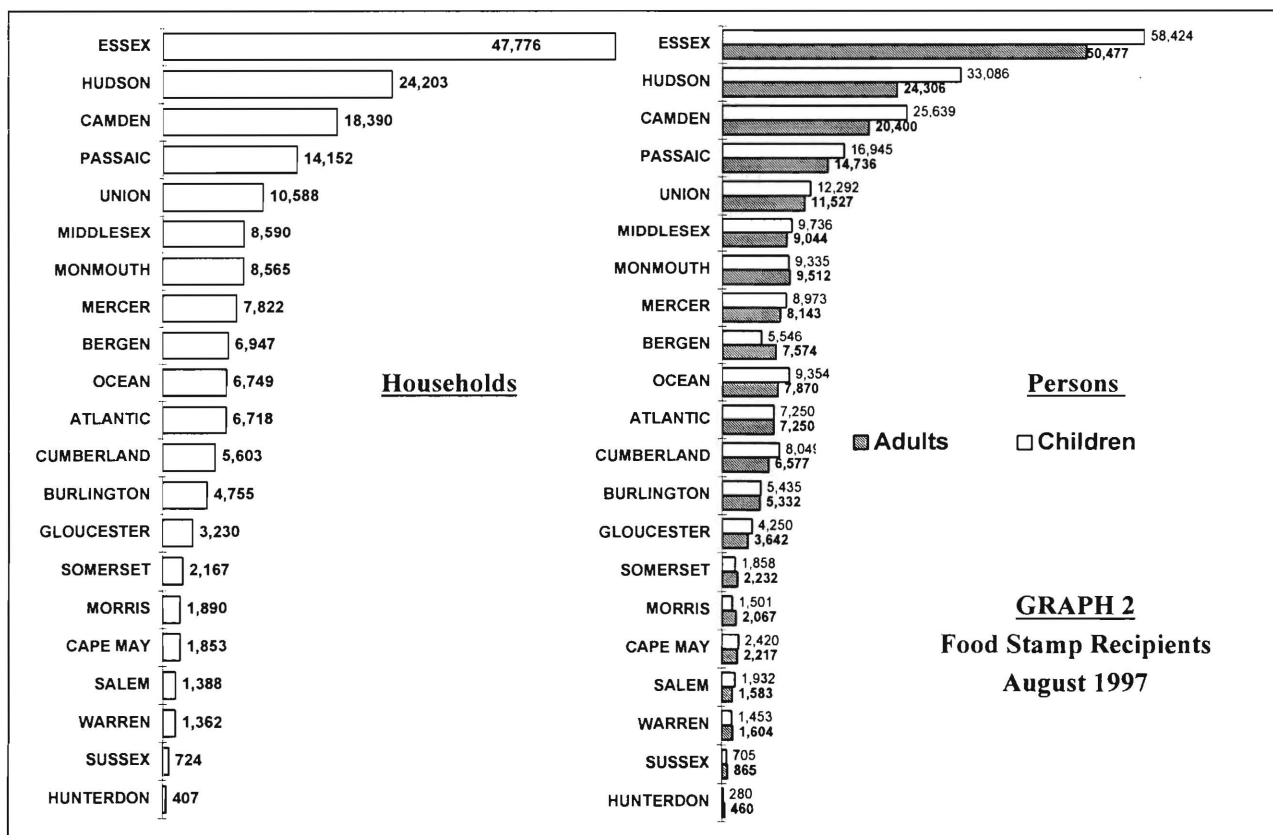
New Jersey Department of Human Services
Division of Family Development

Table 2
FOOD STAMP Program
NUMBER OF ATP'S ISSUED TO HOUSEHOLDS, PERSONS, ADULTS
AND CHILDREN AT THE END OF THE REPORT MONTH
August 1997

County	<u>HOUSEHOLDS</u>			<u>PERSONS</u>				
	TANF	Other low income	TOTAL	TOTAL	TANF	Other low income	Adults	Children
ATLANTIC	2,443	4,275	6,718	14,500	8,103	6,397	7,250	7,250
BERGEN	2,056	4,891	6,947	13,120	5,990	7,130	7,574	5,546
BURLINGTON	2,014	2,741	4,755	10,767	6,342	4,425	5,332	5,435
CAMDEN	10,407	7,983	18,390	46,039	34,376	11,663	20,400	25,639
CAPE MAY	816	1,037	1,853	4,637	2,815	1,822	2,217	2,420
CUMBERLAND	3,082	2,521	5,603	14,626	10,572	4,054	6,577	8,049
ESSEX	23,945	23,831	47,776	108,901	75,383	33,518	50,477	58,424
GLOUCESTER	1,723	1,507	3,230	7,892	5,529	2,363	3,642	4,250
HUDSON	14,040	10,163	24,203	57,392	42,140	15,252	24,306	33,086
HUNTERDON	86	321	407	740	269	471	460	280
MERCER	3,622	4,200	7,822	17,116	11,449	5,667	8,143	8,973
MIDDLESEX	4,007	4,583	8,590	18,780	12,122	6,658	9,044	9,736
MONMOUTH	3,218	5,347	8,565	18,847	10,599	8,248	9,512	9,335
MORRIS	490	1,400	1,890	3,568	1,468	2,100	2,067	1,501
OCEAN	2,682	4,067	6,749	17,224	9,127	8,097	7,870	9,354
PASSAIC	5,694	8,458	14,152	31,681	18,591	13,090	14,736	16,945
SALEM	711	677	1,388	3,515	2,376	1,139	1,583	1,932
SOMERSET	669	1,498	2,167	4,090	2,014	2,076	2,232	1,858
SUSSEX	183	541	724	1,570	575	995	865	705
UNION	4,813	5,775	10,588	23,819	15,596	8,223	11,527	12,292
WARREN	464	898	1,362	3,057	1,504	1,553	1,604	1,453
NJ TOTAL	87,165	96,714	183,879	421,881	276,940	144,941	197,418	224,463

ATP - Authorization to Participate

Data is derived from NJ Division of Family Development's FAMIS report # FB-160.



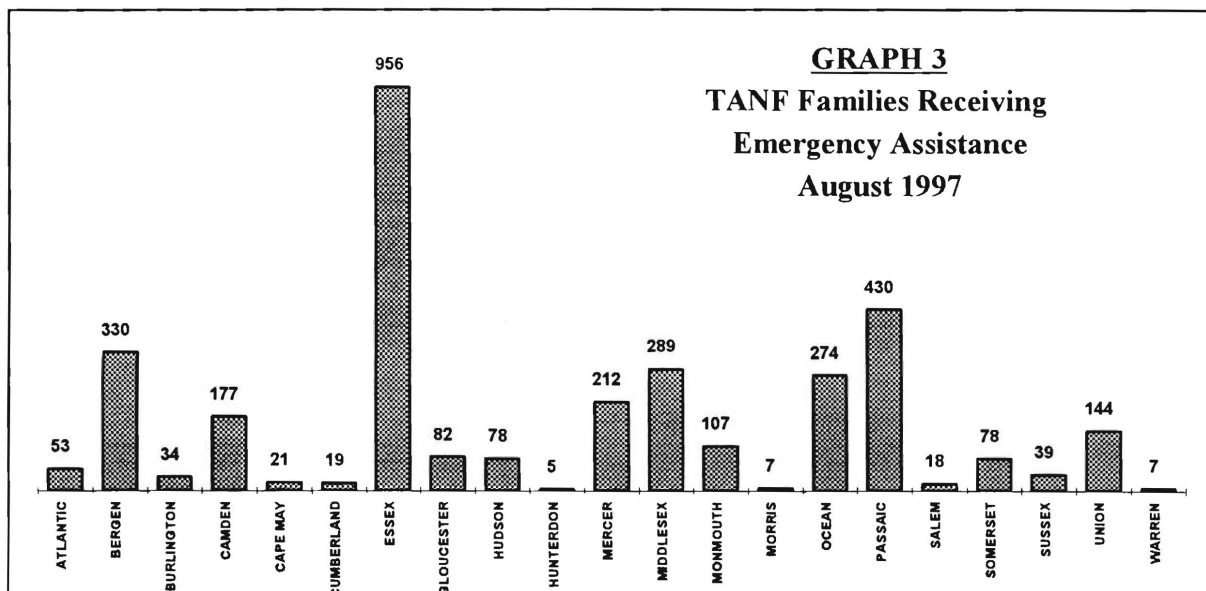
New Jersey Department of Human Services
Division of Family Development

Table 3
TANF/SSI EMERGENCY ASSISTANCE
NUMBER OF ELIGIBLE FAMILIES RECEIVING EMERGENCY ASSISTANCE PAYMENTS
(UNDUPLICATED CASES)

August 1997

County	TANF Families Receiving Emergency Assistance					SSI Recipients Receiving EA
	TOTAL TANF-EA	Temporary Rental Assist.	Motel Housing	Emergency Shelter	Other TANF-EA	
ATLANTIC	53	30	0	5	18	20
BERGEN	330	172	30	28	100	27
BURLINGTON	34	1	1	21	11	2
CAMDEN	177	55	2	7	113	19
CAPE MAY	21	4	2	0	15	5
CUMBERLAND	19	0	2	4	13	5
ESSEX	956	453	15	82	406	37
GLOUCESTER	82	30	7	37	8	3
HUDSON	78	20	0	12	46	6
HUNTERDON	5	0	0	1	4	1
MERCER	212	94	16	3	99	19
MIDDLESEX	289	101	11	16	161	51
MONMOUTH	107	80	10	3	14	2
MORRIS	7	0	0	1	6	3
OCEAN	274	101	91	1	81	58
PASSAIC	430	4	1	9	416	25
SALEM	18	7	4	0	7	1
SOMERSET	78	11	4	18	45	5
SUSSEX	39	4	13	7	15	6
UNION	144	14	5	12	113	13
WARREN	7	0	3	2	2	1
NJ TOTAL	3,360	1,181	217	269	1,693	309

Derived from NJ Division of Family Development FAMIS Reports #FM457 and #FM430-03A



New Jersey Department of Human Services
Division of Family Development

TABLE 4
WORK FIRST NEW JERSEY
STATISTICAL SUMMARY
August 1997

COUNTY	TOTAL NONEXEMPT RECIPIENTS	EMPLOYMENT DIRECTED ACTIVITIES			EMPLOYED OPEN (TANF RECIPIENT)	CHILD CARE ON ACTIVE CASE	EMPLOYED CLOSED	POST TANF CHILD CARE
		CWEP	ALL OTHER TRAINING	JOB SEARCH				
ATLANTIC	1,172	107	143	76	335	125	72	168
BERGEN	1,640	159	113	99	250	147	38	106
BURLINGTON	1,154	183	57	157	282	122	51	213
CAMDEN	7,335	332	295	290	737	473	146	325
CAPE MAY	386	82	15	27	154	10	53	19
CUMBERLAND	1,902	286	209	317	301	186	89	158
ESSEX	18,191	1,270	1,557	967	1,244	1,559	173	306
GLOUCESTER	858	113	66	217	122	78	39	104
HUDSON	10,238	1,123	1,394	133	842	1,010	153	394
HUNTERDON	50	3	17	10	31	8	4	13
MERCER	2,687	264	372	89	221	243	50	163
MIDDLESEX	2,205	335	238	406	576	162	83	230
MONMOUTH	2,302	104	413	81	344	314	62	180
MORRIS	245	172	84	136	92	85	18	57
OCEAN	1,326	39	127	196	222	136	77	178
PASSAIC	4,419	637	430	231	416	407	68	157
SALEM	451	60	46	41	68	32	20	29
SOMERSET	418	90	52	32	70	53	17	44
SUSSEX	84	30	13	30	62	34	10	48
UNION	3,788	614	335	337	259	236	63	139
WARREN	292	85	13	17	46	12	18	24
STATE	61,143	6,088	5,989	3,889	6,674	5,432	1,304	3,055

Data is derived from NJ Division of Family Development's FAMIS reports

New Jersey Department of Human Services
Division of Family Development

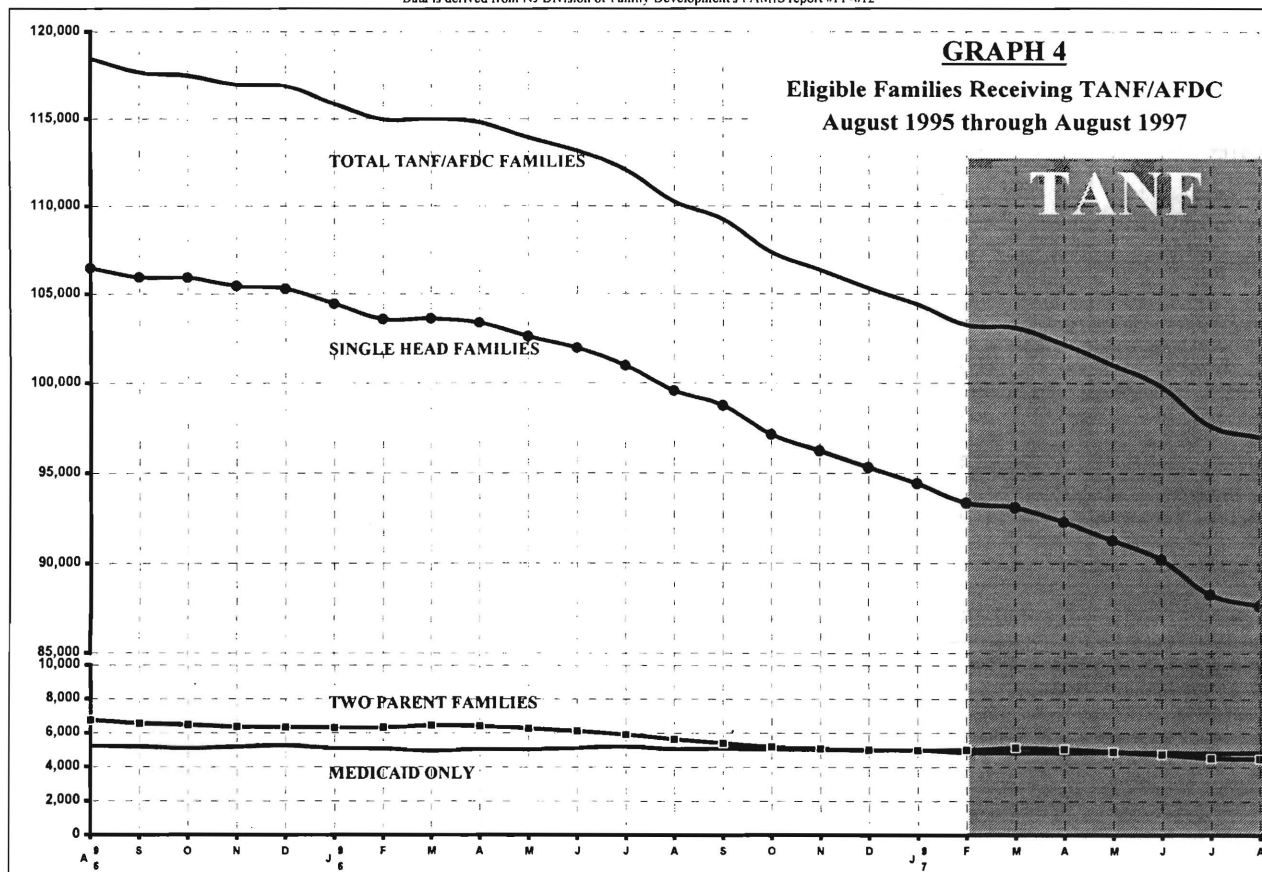
Table 5**TANF/AFDC Program**

NUMBER OF APPLICATIONS AND TERMINATIONS DURING REPORT MONTH, AND
NUMBER OF ELIGIBLE FAMILIES RECEIVING TANF/AFDC AT END OF REPORT MONTH
August 1995 through August 1997

AFDC	Applications Approved	Terminations	Regular AFDC (C Segment)	Unemployed Parents(F)	State AFDC(N)	Two Parents (F+N)	Medicaid Only	Total AFDC
1995 AUG	5,547	6,294	106,475	3,489	3,260	6,749	5,239	118,463
SEP	5,922	6,647	105,943	3,303	3,260	6,563	5,175	117,681
OCT	7,062	7,359	105,917	3,224	3,257	6,481	5,110	117,508
NOV	6,083	6,660	105,445	3,164	3,199	6,363	5,189	116,997
DEC	5,582	5,775	105,287	3,165	3,189	6,354	5,258	116,899
AVERAGE (12 mos.)	5,956	6,460	107,376	3,575	3,288	6,863	5,192	119,430
1996 JAN	5,332	6,236	104,430	3,139	3,173	6,312	5,113	115,855
FEB	5,217	6,283	103,561	3,161	3,170	6,331	5,060	114,952
MAR	6,317	6,302	103,598	3,230	3,217	6,447	4,956	115,001
APR	6,896	7,241	103,352	3,192	3,211	6,403	5,040	114,795
MAY	5,335	6,152	102,600	3,112	3,163	6,275	5,038	113,913
JUN	5,319	6,121	101,947	2,999	3,117	6,116	5,116	113,179
JUL	5,874	7,027	100,968	2,843	3,073	5,916	5,200	112,084
AUG	5,014	6,789	99,567	2,638	2,993	5,631	5,053	110,251
SEP	6,311	7,440	98,744	2,462	2,933	5,395	5,097	109,236
OCT	5,213	7,015	97,152	2,368	2,822	5,190	5,026	107,368
NOV	5,374	6,549	96,238	2,329	2,752	5,081	5,034	106,353
DEC	5,018	6,137	95,322	2,308	2,708	5,016	4,992	105,330
AVERAGE	5,602	6,608	100,623	2,815	3,028	5,843	5,060	111,526
1997 JAN	5,933	6,803	94,429	2,290	2,692	4,982	4,994	104,405

TANF	Applications Approved	Terminations	Single Head Families	Two Parent Families	Medicaid Only	Total TANF
FEB	4,410	5,728	93,359	5,010	4,862	103,231
MAR	6,184	6,416	93,104	5,125	4,835	103,064
APR	5,172	6,034	92,300	5,049	4,828	102,177
MAY	4,882	6,121	91,290	4,893	4,851	101,034
JUN	4,620	5,760	90,223	4,748	4,856	99,827
JUL	5,240	7,344	88,306	4,522	4,811	97,639
AUG	4,637	5,388	87,670	4,484	4,860	97,014
AVERAGE (incl. JAN)	5,135	6,199	91,335	4,852	4,862	101,049

Data is derived from NJ Division of Family Development's FAMIS report #FF-012



New Jersey Department of Human Services

Division of Family Development

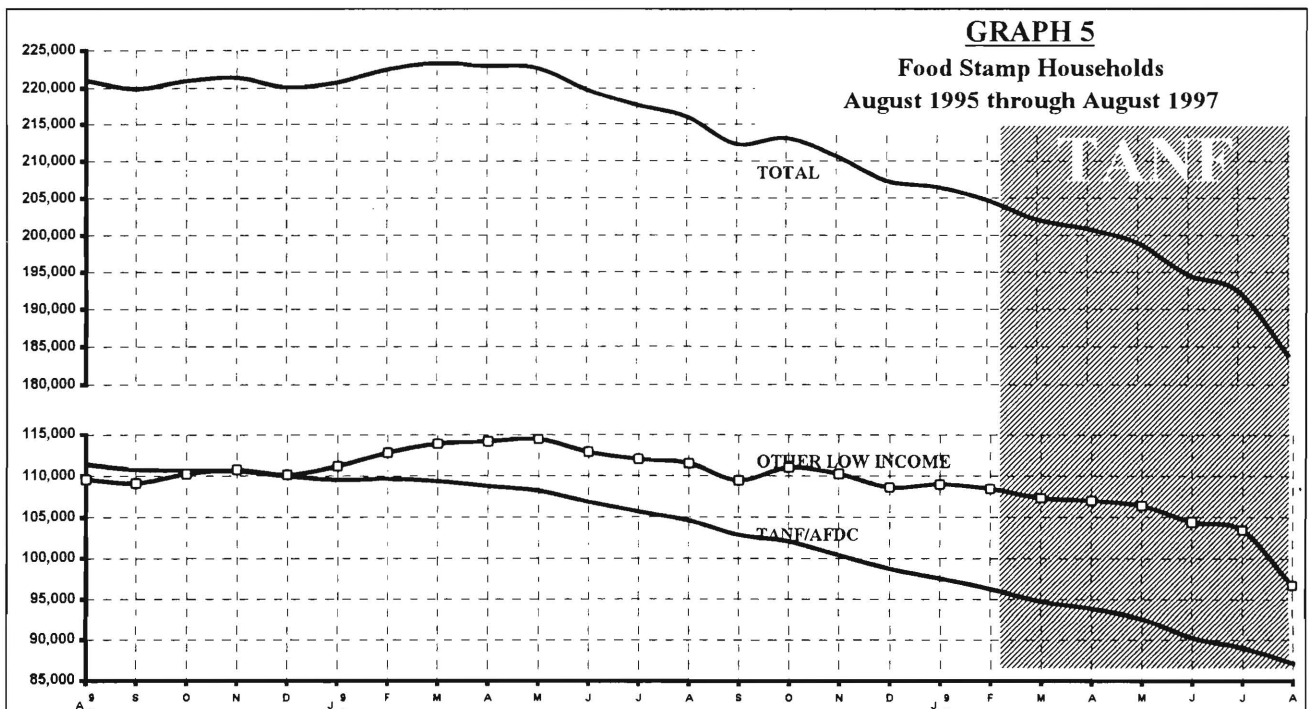
TABLE 6

FOOD STAMP Program State Summary
NUMBER OF ATP'S ISSUED TO HOUSEHOLDS, PERSONS
ADULTS AND CHILDREN AT THE END OF THE REPORT MONTH
August 1995 through August 1997

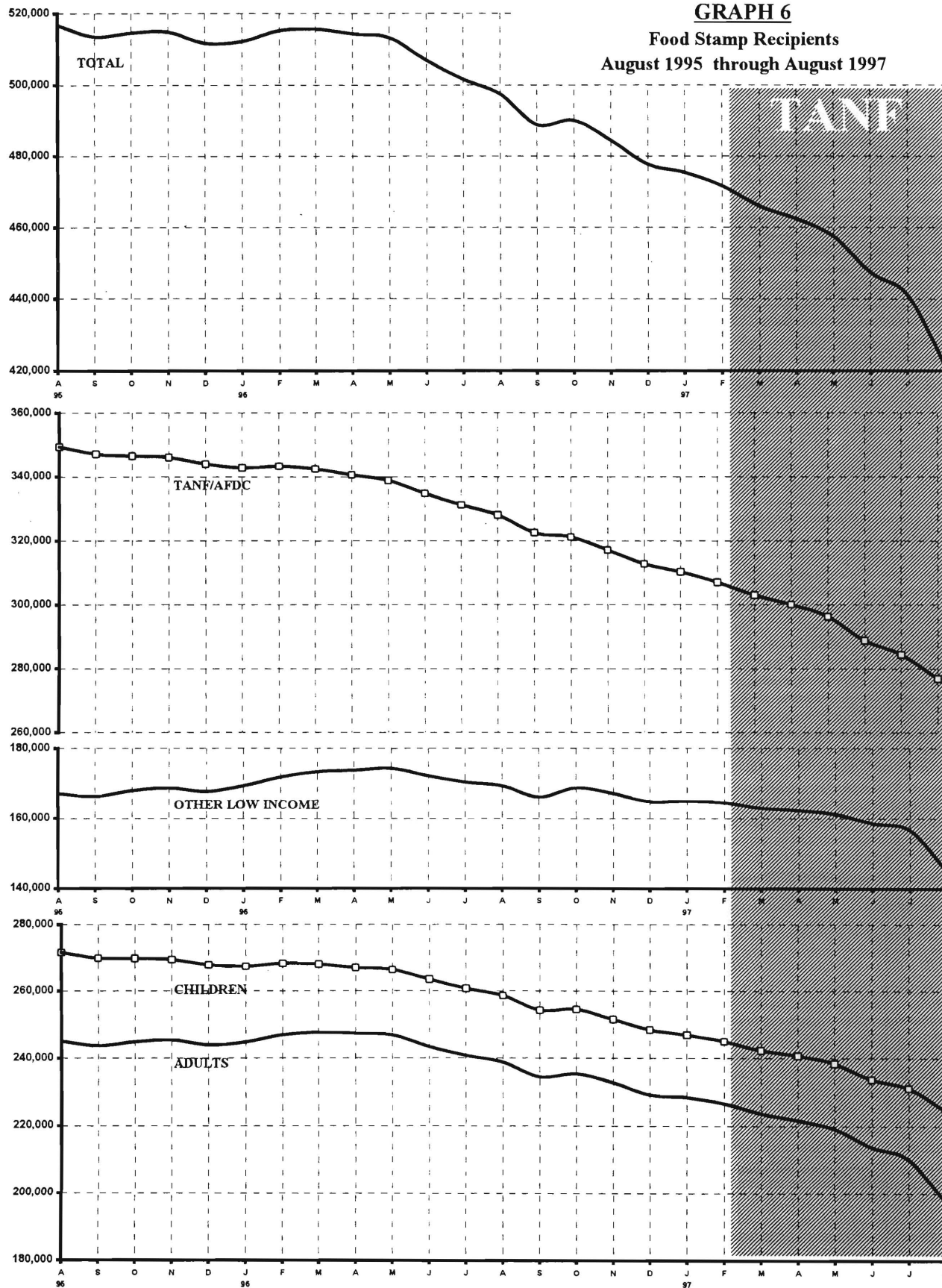
		<u>HOUSEHOLDS</u>			<u>PERSONS</u>				
		TANF/AFDC	Other low income	TOTAL	TOTAL	TANF/AFDC	Other low income	Adults	Children
AFDC 1995	AUG	111,415	109,603	221,018	516,618	349,372	167,246	245,110	271,508
	SEP	110,760	109,154	219,914	513,517	347,126	166,391	243,723	269,794
	OCT	110,697	110,268	220,965	514,598	346,519	168,079	244,911	269,687
	NOV	110,630	110,763	221,393	514,823	346,034	168,789	245,455	269,368
	DEC	109,992	110,155	220,147	511,727	343,955	167,772	243,965	267,762
	AVERAGE (12 mos.)	112,211	109,290	221,500	519,170	351,916	167,254	245,892	273,279
1996	JAN	109,554	111,166	220,720	512,165	342,778	169,387	244,801	267,364
	FEB	109,649	112,813	222,462	515,181	343,314	171,867	246,961	268,220
	MAR	109,364	113,895	223,259	515,676	342,361	173,315	247,695	267,981
	APR	108,787	114,163	222,950	514,375	340,597	173,778	247,380	266,995
	MAY	108,205	114,458	222,663	513,213	338,891	174,322	246,918	266,295
	JUN	106,875	112,888	219,763	506,926	334,762	172,164	243,422	263,504
	JUL	105,653	112,023	217,676	501,575	331,157	170,418	240,840	260,735
	AUG	104,568	111,473	216,041	497,436	328,055	169,381	238,804	258,632
	SEP	102,827	109,441	212,268	488,765	322,572	166,193	234,442	254,323
	OCT	102,088	111,008	213,096	489,991	321,226	168,765	235,401	254,590
	NOV	100,411	110,254	210,665	484,378	317,163	167,215	232,756	251,622
	DEC	98,729	108,617	207,346	477,693	312,869	164,824	229,191	248,502
	AVERAGE	105,559	111,850	217,409	501,448	331,312	170,136	240,718	260,730
1997	JAN	97,555	108,961	206,516	475,374	310,342	165,032	228,388	246,986
TANF	FEB	96,279	108,462	204,741	471,576	307,066	164,510	226,570	245,006
	MAR	94,787	107,331	202,118	465,920	303,052	162,868	223,576	242,344
	APR	93,845	107,008	200,853	462,303	300,073	162,230	221,538	240,765
	MAY	92,593	106,369	198,962	457,430	296,327	161,103	219,003	238,427
	JUN	90,218	104,441	194,659	447,417	288,957	158,460	213,692	233,725
	JUL	89,029	103,449	192,478	441,141	284,541	156,600	210,029	231,112
	AUG	87,165	96,714	183,879	421,881	276,940	144,941	197,418	224,463
	AVERAGE	92,684	105,342	198,026	455,380	295,912	159,468	217,527	237,854

ATP - Authorization to Participate

Data is derived from NJ Division of Family Development's FAMIS report # FB-160.



GRAPH 6
Food Stamp Recipients
August 1995 through August 1997



New Jersey Department of Human Services
Division of Family Development

TABLE 7

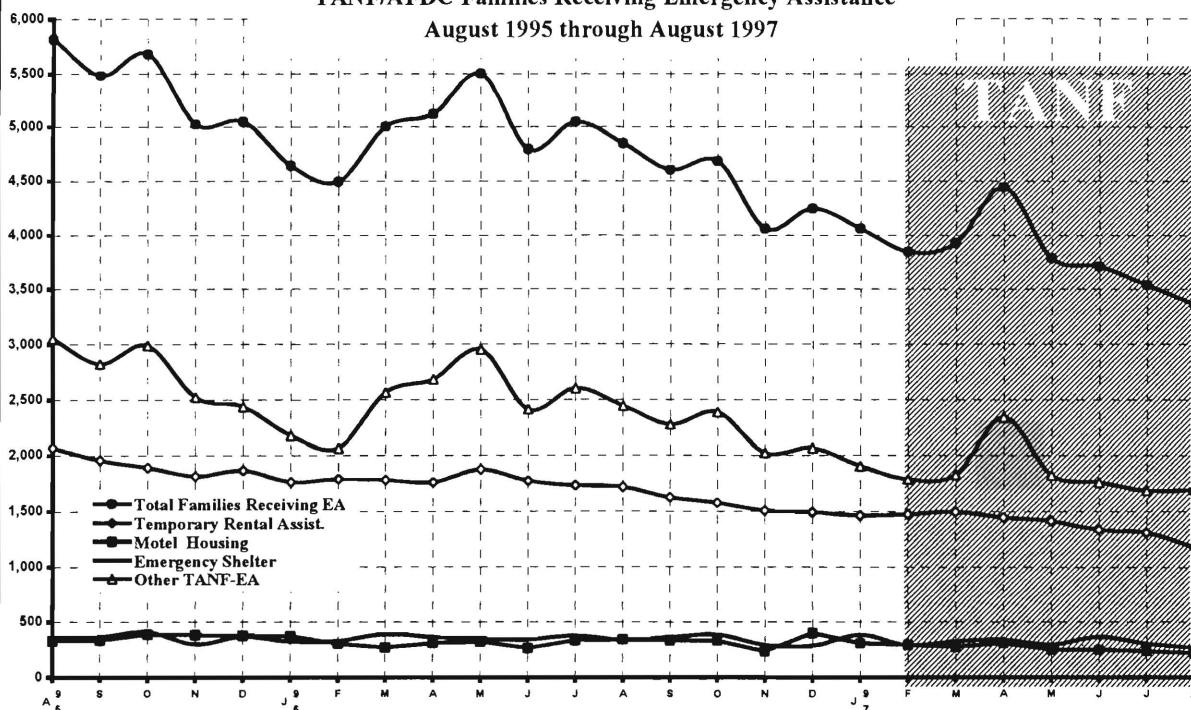
EMERGENCY ASSISTANCE Program for TANF/AFDC Recipients, State Summary
NUMBER OF ELIGIBLE FAMILIES RECEIVING EMERGENCY ASSISTANCE PAYMENTS
(UNDUPLICATED CASES)
August 1995 through August 1997

		Total Families Receiving EA	Temporary Rental Assistance	Motel Housing	Emergency Shelter	Other TANF/AFDC-EA
AFDC 1995	AUG	5,813	2,068	331	362	3,052
	SEP	5,482	1,958	336	364	2,824
	OCT	5,678	1,891	388	410	2,989
	NOV	5,024	1,816	384	302	2,522
	DEC	5,048	1,864	377	369	2,438
	AVERAGE (12 mos.)	5,755	2,201	405	369	2,779
1996	JAN	4,639	1,761	374	325	2,179
	FEB	4,490	1,788	305	330	2,067
	MAR	5,001	1,779	270	388	2,564
	APR	5,118	1,760	309	364	2,685
	MAY	5,498	1,873	323	350	2,952
	JUN	4,791	1,772	266	341	2,412
	JUL	5,044	1,729	335	377	2,603
	AUG	4,845	1,716	346	339	2,444
	SEP	4,600	1,625	337	362	2,276
	OCT	4,683	1,576	334	385	2,388
	NOV	4,059	1,507	237	294	2,021
	DEC	4,244	1,492	400	286	2,066
	AVERAGE	4,751	1,698	320	345	2,388
TANF	1997 JAN	4,059	1,462	310	382	1,905
	FEB	3,847	1,473	296	292	1,786
	MAR	3,926	1,494	278	327	1,827
	APR	4,440	1,447	309	342	2,342
	MAY	3,788	1,416	250	298	1,824
	JUN	3,711	1,336	251	365	1,759
	JUL	3,538	1,308	238	306	1,686
	AUG	3,360	1,181	217	269	1,693
	AVERAGE	3,834	1,390	269	323	1,853

Data derived from NJ Division of Family Development FAMIS Report #FM457 and #FM430-03a.

GRAPH 7

TANF/AFDC Families Receiving Emergency Assistance
August 1995 through August 1997



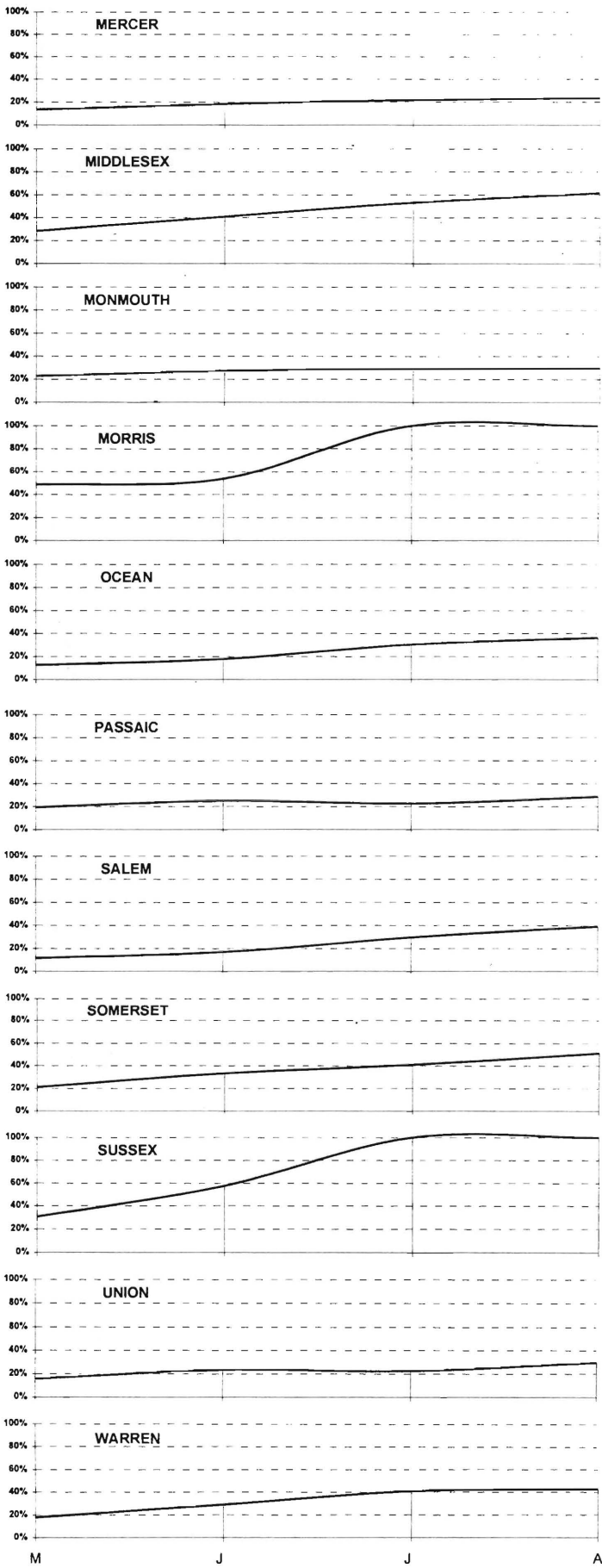
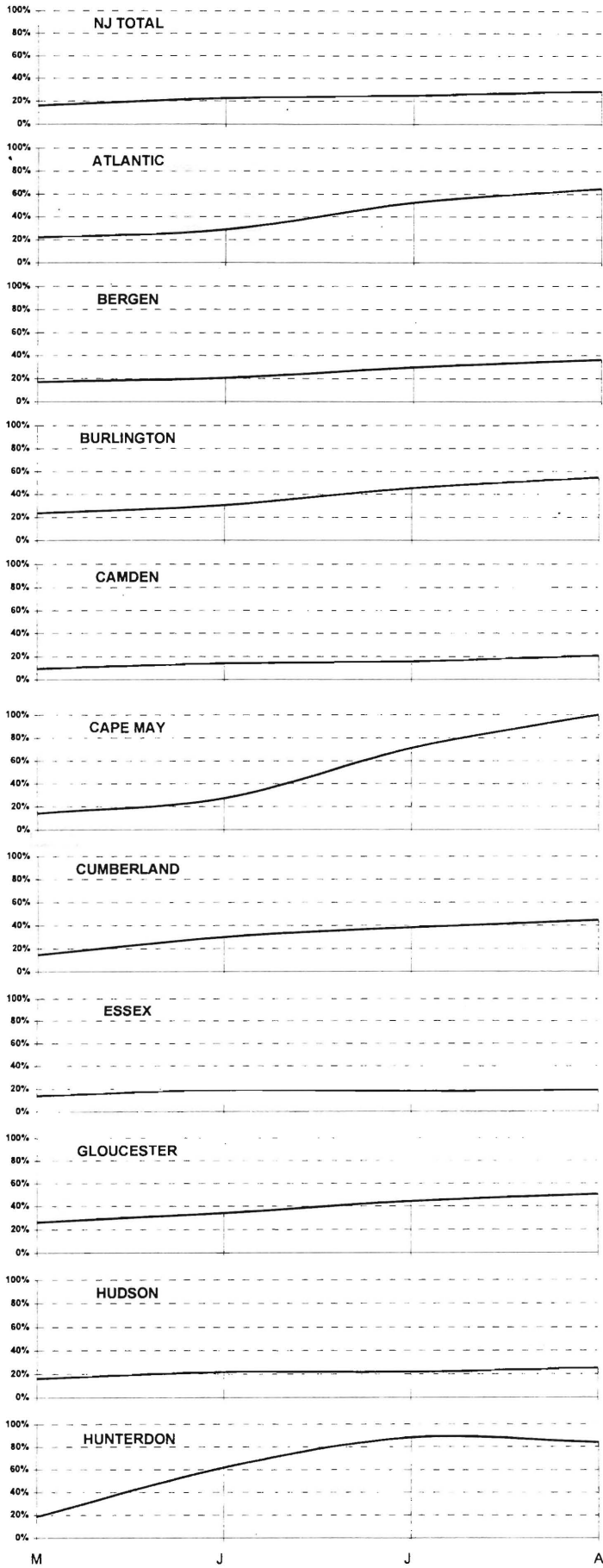
New Jersey Department of Human Services
Division of Family Development

Table 8
ESTIMATED TANF PARTICIPATION RATES
May 1997 - August 1997

County	ESTIMATED TANF PARTICIPATION RATE			
	May	June	July	August
ATLANTIC	21.9%	28.8%	52.1%	64.5%
BERGEN	17.3%	20.5%	29.6%	36.3%
BURLINGTON	23.6%	30.7%	45.4%	54.6%
CAMDEN	9.3%	13.9%	15.8%	20.8%
CAPE MAY	14.4%	27.2%	71.0%	99.7%
CUMBERLAND	14.6%	30.0%	38.1%	44.7%
ESSEX	13.9%	19.0%	17.9%	18.8%
GLOUCESTER	26.1%	34.1%	44.3%	50.2%
HUDSON	16.2%	21.7%	22.1%	25.1%
HUNTERDON	18.4%	61.7%	88.4%	84.0%
MERCER	13.6%	18.4%	21.7%	23.7%
MIDDLESEX	28.2%	40.7%	52.8%	61.6%
MONMOUTH	22.7%	27.4%	29.1%	29.7%
MORRIS	48.7%	53.8%	100.0%	100.0%
OCEAN	12.6%	17.9%	30.5%	36.3%
PASSAIC	19.4%	25.1%	22.7%	28.6%
SALEM	11.7%	16.9%	29.6%	39.0%
SOMERSET	21.3%	33.3%	41.0%	51.2%
SUSSEX	30.5%	57.5%	100.0%	100.0%
UNION	15.7%	23.5%	22.3%	29.6%
WARREN	17.9%	29.3%	40.9%	42.8%
NJ TOTAL	16.3%	22.5%	25.1%	29.0%

The new Work First New Jersey participation rate formulation
mandated by PRWORA, 1996 federal welfare reform legislation
establishing Temporary Assistance to Needy Families (TANF)

Graph 8
ESTIMATED TANF PARTICIPATION RATES
May 1997 - August 1997

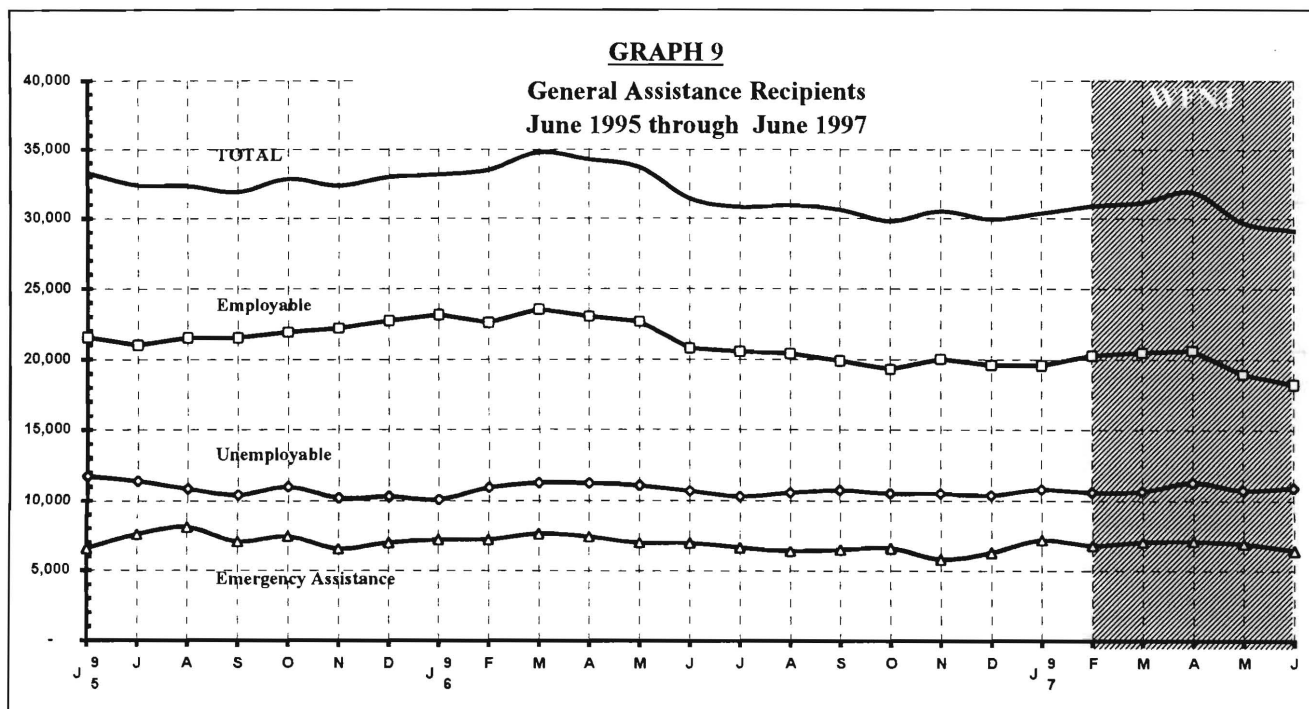


New Jersey Department of Human Services
Division of Family Development

TABLE 9
GENERAL ASSISTANCE Program, State Summary
NUMBER OF EMPLOYABLE AND UNEMPLOYABLE RECIPIENTS
AND EMERGENCY ASSISTANCE PAYMENTS DURING REPORT MONTH
June 1995 through June 1997

	<u>All Persons Aided</u>			<u>Emergency Assistance Payments</u>		
	Employable	Unemployable	Total	Temporary Rental Assistance	Other GA-EA	Total
1995 JUN	21,575	11,738	33,313	4,423	2,146	6,569
JUL	21,000	11,391	32,391	4,048	3,526	7,574
AUG	21,526	10,829	32,355	4,174	3,909	8,083
SEP	21,525	10,389	31,914	4,110	2,945	7,055
OCT	21,913	10,959	32,872	3,939	3,497	7,436
NOV	22,206	10,171	32,377	4,141	2,422	6,563
DEC	22,732	10,268	33,000	4,086	2,902	6,988
AVERAGE (12 mos.)	21,782	11,178	33,611	4,420	2,947	7,368
1996 JAN	23,140	10,054	33,194	4,421	2,803	7,224
FEB	22,584	10,927	33,511	4,567	2,651	7,218
MAR	23,528	11,243	34,771	4,472	3,185	7,657
APR	23,028	11,221	34,249	4,490	2,944	7,434
MAY	22,657	11,054	33,711	4,064	2,947	7,011
JUN	20,785	10,667	31,452	4,283	2,716	6,999
JUL	20,546	10,282	30,828	3,754	2,922	6,676
AUG	20,416	10,552	30,968	3,958	2,448	6,406
SEP	19,895	10,741	30,636	3,905	2,597	6,502
OCT	19,310	10,514	29,824	3,894	2,728	6,622
NOV	20,019	10,508	30,527	3,662	2,166	5,828
DEC	19,582	10,369	29,951	3,725	2,574	6,299
AVERAGE	21,291	10,678	31,969	4,100	2,723	6,823
1997 JAN	19,562	10,809	30,371	4,182	3,029	7,211
FEB	20,274	10,607	30,881	3,994	2,807	6,801
MAR	20,467	10,678	31,145	4,167	2,907	7,074
APR	20,612	11,305	31,917	4,184	2,930	7,114
MAY	18,938	10,758	29,696	4,137	2,789	6,926
JUN	18,218	10,913	29,131	3,850	2,580	6,430
AVERAGE	19,679	10,845	30,524	4,086	2,840	6,926

Data Sources: NJ Division of Family Development, GA Fiscal Unit



New Jersey Department of Human Services
Division of Family Development

TABLE 10
CHILD SUPPORT AND PATERNITY COLLECTIONS
State Summary

COLLECTION SOURCE	Comparison of FFY 1996 and FFY 1997		
	10/95-6/96	10/96-6/97	% change
AFDC & FOSTER CARE			
Federal Tax	\$17,847,912	\$18,992,137	6.4%
State Tax	1,130,512	1,113,887	-1.5%
Unempl. Ins. Ben.	4,094,622	4,167,256	1.8%
Income Withholding	31,131,463	30,830,260	-1.0%
Other/Own Behalf	11,298,413	14,238,422	26.0%
From Other States	2,519,417	3,192,076	26.7%
For Other States	5,663,118	6,484,438	14.5%
TOTAL COLLECTION	\$73,685,457	\$79,018,476	7.2%
TOTAL DISTRIBUTION	\$74,508,010	\$76,849,532	3.1%
NON- AFDC			
Federal Tax	\$8,534,024	\$8,533,287	0.0%
State Tax	1,397,851	1,582,807	13.2%
Unempl. Ins. Ben.	14,402,749	13,331,787	-7.4%
Income Withholding	186,275,192	208,719,286	12.0%
Other/Own Behalf	93,132,352	101,154,836	8.6%
From Other States	15,406,629	18,846,181	22.3%
For Other States	21,130,050	22,679,339	7.3%
TOTAL COLLECTION	\$340,278,847	\$374,847,523	10.2%
TOTAL DISTRIBUTION	\$320,312,347	\$367,805,594	14.8%
TOTAL			
Federal Tax	\$26,381,936	\$27,525,424	4.3%
State Tax	\$2,528,363	\$2,696,694	6.7%
Unempl. Ins. Ben.	\$18,497,371	\$17,499,043	-5.4%
Income Withholding	\$217,406,655	\$239,549,546	10.2%
Other/Own Behalf	\$104,430,765	\$115,393,258	10.5%
From Other States	\$17,926,046	\$22,038,257	22.9%
For Other States	\$26,793,168	\$29,163,777	8.8%
TOTAL COLLECTION	\$413,964,304	\$453,865,999	9.6%
TOTAL DISTRIBUTION	\$394,820,357	\$444,655,126	12.6%

Distributed amount represents collections reported and recognized by the Federal Office of
Child Support Enforcement for calculating incentives and annual report to Congress

Source: DFD Office of Child Support and Paternity Programs

Explanatory Notes

The Department of Human Services Division of Family Development provides basic income and an opportunity to achieve self-sufficiency for individuals and families served by the Division's programs. The Division provides leadership, direction and supervision to those public agencies responsible for administering those programs and plans for and develops policies to promote self-sufficiency.

WORK FIRST NEW JERSEY (WFNJ) - Fully implemented July 1, 1997, this is New Jersey's welfare reform program which responds to the requirements of the Federal Personal Responsibility and Work Opportunity Reconciliation Act (PRWORA) of 1996. PRWORA establishes Temporary Assistance to Needy Families (TANF) as the replacement for AFDC. WFNJ includes two segments, WFNJ/TANF for families with children, and WFNJ/GA (General Assistance) for single adults and couples without dependent children. The emphasis is on achieving self-sufficiency and limits lifetime receipt of financial assistance to a total of five years.

WFNJ Statistical Summary (Table 4)

Total Non-Exempt Recipients - Calculation of the number of mandatory individuals (FAMIS report # FB304).

Employment Directed Activities (EDA) - From Activities Summary Report (OMEGA report # RM064). Unduplicated count of persons participating in Community Work Experience Program (CWEP), All Other Training, or Job Search.

Number of Persons Employed This Month, Still Receiving TANF - From Activities Summary Report (OMEGA report # RM064).

Participants Receiving Child Care Services - From Issuance Disbursement Summary (OMEGA report # RM703). Total number of active participants who show receipt of Child Care.

Number of Persons Closed on FAMIS Due to Employment- From FAMIS report # FM463.

Post TANF and Receiving Child Care - Persons no longer in receipt of TANF but still receiving child care. From Issuance Disbursement Summary (OMEGA report # RM703).

AID TO FAMILIES WITH DEPENDENT CHILDREN (AFDC) - Replaced by WFNJ/TANF July 1, 1997, AFDC provided financial assistance for dependent children and their natural or adoptive parents, or certain other relatives recognized as taking the place of a parent.

Regular AFDC (C Segment) - assistance when only one parent is in the home due to death or absence, or both parents are in the home but at least one is incapacitated.

Unemployed Parents (F Segment) - assistance when both parents are in the home, neither is incapacitated and the primary wage earner meets the federally defined criteria for unemployment.

State AFDC (N Segment) - assistance when both parents are in the home, neither is incapacitated, and the primary wage earner does not meet the federal definition of unemployment.

Medicaid Only - families no longer receiving AFDC financial assistance but remaining eligible for Medicaid under applicable provisions which extend coverage beyond period of AFDC assistance.

FOOD STAMP PROGRAM (FS) - Authorized by Congress as a nutritional supplement program to provide low income households with more food of greater variety and better nutrition. Program eligibility is based on household income, resources, and expenses for medical, shelter, and dependent care. CWA staff refer certain recipients to the New Jersey Department of Labor for participation in the Food Stamp Employment and Training Program.

EMERGENCY ASSISTANCE (EA) - Payments to those eligible for WFNJ/TANF or WFNJ/GA, authorized during the 30 consecutive days immediately following the emergency (defined as a substantial loss of shelter, food, clothing, or household furnishings by fire, flood or other similar disaster) or if the eligible individual or family is in an imminent or actual state of homelessness.

New Jersey Department of Human Services
Division of Family Development

TABLE 11**WFNJ/GENERAL ASSISTANCE Program**

**EMPLOYABLE AND UNEMPLOYABLE RECIPIENTS AND EMERGENCY ASSISTANCE RECIPIENTS
COUNTIES AND 21 LARGEST MUNICIPALITIES**

June 1997

<u>County/ Municipality</u>	<u>Total Persons Aided</u>			<u>Emergency Assistance Payments</u>		
	Employable	Unemployable	Total	Temporary Rental Assist.	Other GA-EA	Total
ATLANTIC	857	506	1,363	60	18	78
BERGEN	423	424	847	243	92	335
BURLINGTON	304	409	713	111	106	217
CAMDEN	1,976	1,198	3,174	155	84	239
CAPE MAY	76	102	178	18	11	29
CUMBERLAND	306	179	485	6	22	28
ESSEX	6,265	2,367	8,632	910	1,381	2,291
GLOUCESTER	126	155	281	12	13	25
HUDSON	805	1,144	1,949	144	23	167
HUNTERDON	36	52	88	21	21	42
MERCER	1,317	866	2,183	259	286	545
MIDDLESEX	419	534	953	89	40	129
MONMOUTH	561	620	1,181	248	45	293
MORRIS	77	167	244	34	12	46
OCEAN	455	369	824	289	128	417
PASSAIC	2,151	693	2,844	453	172	625
SALEM	119	63	182	17	23	40
SOMERSET	81	99	180	35	9	44
SUSSEX	26	37	63	25	2	27
UNION	1,798	860	2,658	698	88	786
WARREN	40	69	109	23	4	27
TOTAL NJ	18,218	10,913	29,131	3,850	2,580	6,430

Atlantic City	734	302	1,036	45	17	62
Mount Holly	101	88	189	42	62	104
Camden	1,773	838	2,611	101	47	148
Vineland	152	98	250	4	15	19
East Orange	475	370	845	206	35	241
Irvington	349	129	478	58	9	67
Montclair	109	62	171	27	9	36
Newark	4,896	1,565	6,461	538	1,311	1,849
Orange	318	71	389	49	1	50
Bayonne	105	69	174	5	0	5
Hoboken	107	123	230	18	1	19
Jersey City	482	512	994	83	16	99
Trenton	1,220	754	1,974	229	272	501
Perth Amboy	83	116	199	10	2	12
Asbury Park	162	97	259	68	0	68
Long Branch	150	115	265	45	0	45
Lakewood	254	117	371	161	38	199
Passaic	420	227	647	170	33	203
Paterson	1,646	333	1,979	238	116	354
Elizabeth	1,178	429	1,607	544	46	590
Plainfield	286	150	436	42	2	44
Total	15,000	6,565	21,565	2,683	2,032	4,715

Source: NJ Division of Family Development, GA Fiscal Unit

New Jersey Department of Human Services
Division of Family Development

TABLE 4
WORK FIRST NEW JERSEY
STATISTICAL SUMMARY
July 1997

COUNTY	TOTAL NONEXEMPT RECIPIENTS	EMPLOYMENT DIRECTED ACTIVITIES			EMPLOYED OPEN (TANF RECIPIENT)	CHILD CARE ON ACTIVE CASE	EMPLOYED CLOSED (revised)	POST TANF CHILD CARE
		CWEP	ALL OTHER TRAINING	JOB SEARCH				
ATLANTIC	1,225	107	154	56	333	139	102	164
BERGEN	1,683	183	146	23	215	149	41	97
BURLINGTON	1,221	176	75	75	209	144	55	226
CAMDEN	7,218	354	345	151	661	472	131	307
CAPE MAY	420	79	19	19	135	10	86	20
CUMBERLAND	1,930	243	135	130	256	187	51	136
ESSEX	18,089	1,392	1,720	1,054	1,174	1,561	229	319
GLOUCESTER	940	133	84	139	117	89	33	100
HUDSON	10,435	1,053	1,509	103	598	1,084	217	408
HUNTERDON	43	7	10	10	27	12	9	15
MERCER	2,706	275	367	78	184	215	91	162
MIDDLESEX	2,319	406	191	268	502	175	90	246
MONMOUTH	2,340	88	457	79	266	273	59	174
MORRIS	268	203	85	17	95	69	11	50
OCEAN	1,415	55	134	91	179	123	85	178
PASSAIC	4,420	492	370	306	283	356	80	135
SALEM	503	68	31	47	62	27	17	36
SOMERSET	429	65	72	34	59	56	16	31
SUSSEX	87	27	14	34	57	28	16	47
UNION	3,898	395	389	11	230	196	75	139
WARREN	298	93	14	24	43	14	17	27
STATE	61,887	5,894	6,321	2,749	5,685	5,379	1,511	3,017

Data is derived from NJ Division of Family Development's FAMIS reports