

75c 974.905
044.4
C.1

DEPARTMENT OF HUMAN SERVICES

INTER-OFFICE COMMUNICATION

DATE March 4, 1997

TO William Waldman
Commissioner

FROM Karen Highsmith
Director

K. Highsmith

SUBJECT CURRENT PROGRAM STATISTICS



Attached please find CURRENT PROGRAM STATISTICS, including the FDP Statistical Summary for December 1996. Also included are explanatory notes for the various data elements.

Should you have any questions, please feel free to call me.

KH:kas:c

Attachments

c Guhl
Grant
Miller
Tencza

State of New Jersey
Department of Human Services
Division of Family Development

CURRENT PROGRAM STATISTICS



December 1996
Karen Highsmith, Director

State of New Jersey
Department of Human Services
Division of Family Development

CURRENT PROGRAM STATISTICS
December 1996

TABLE OF CONTENTS

Page

Highlights of Current Program Statistics	1-3
---	------------

Statistics by County, December 1996

Table 1 AFDC	4
Graph 1 Current AFDC Families.....	4
Table 2 Food Stamp Program.....	5
Graph 2 Current Food Stamp Households/Persons	5
Table 3 AFDC/SSI Emergency Assistance Program	6
Graph 3 Current AFDC Families Receiving Emergency Assistance.....	6
Table 4 Family Development Program.....	7

State Summary, 1994 - 1996

Table 5 AFDC, December 1994 - December 1996.....	8
Graph 4 Families Receiving AFDC, 12/94 - 12/96	8
Table 6 Food Stamp Program, December 1994 - December 1996	9
Graph 5 Food Stamp Households, 12/94 - 12/96	9
Graph 6 Food Stamp Recipients, 12/94 - 12/96.....	10
Table 7 AFDC Emergency Assistance Program, December 1994 - December 1996.....	11
Graph 7 AFDC Families Receiving Emergency Assistance, 12/94 - 12/96	11
Table 8 JOBS/FDP Participation Rates, by County and Statewide, December 1994 - December 1996.....	12
Graph 8 JOBS/FDP Participation Rates, 12/94 - 12/96	12-13
Table 9 General Assistance, and GA Emergency Assistance, October 1994 - October 1996	14
Graph 9 General Assistance Recipients, 10/94-10/96	14
Table 10 Child Support and Paternity, Fiscal Years 1996-1997	15

Explanatory Notes.....	16-17
-------------------------------	--------------

Supplement

Table 11 General Assistance Recipients and EA Payments by County and Municipality, October 1996	18
Table 12 Child Support and Paternity Cases Remaining Open, Quarter Ending December 1996.....	19

Highlights of Current Program Statistics

AFDC (Tables 1 and 5, Graphs 1 and 4)

105,000 eligible families in New Jersey were receiving AFDC as of the end of December 1996:

- **95,000** single head of household families (Regular AFDC, C segment).
- Among two-parent families, about **2300** Unemployed Parent families (F Segment) and **2700** State AFDC families (N Segment).
- **5000** Medicaid Only families.
- The largest numbers of families by county: Essex with **27,000**, Hudson with **16,900**, and Camden County with **12,300**. (53.3 percent of all AFDC families)
- Other counties ranged from **130** families in Hunterdon to **6,800** in Passaic County, with six counties below **1000** families.

There were 1000 fewer eligible AFDC families in December 1996 than in November 1996 and a decline of 17,000 over the past two years. More than two thirds of that decrease occurred in 1996.

- There were about **900** fewer eligible C segment families in December 1996 than in November 1996 and almost **15,000** less than two years ago.
- F segment families declined from **3800** in December 1994 to **2300** in December 1996.
- State AFDC (N segment) was less than **3400** in December 1994 and slowly declined to about **2700** by December 1996.
- Medicaid Only families averaged less than **5000** in 1994, nearly **5200** for 1995 and less than **5100** for 1996.

FOOD STAMP PROGRAM (Tables 2 and 6, Graphs 2, 5, and 6)

At the end of December 1996, 207,000 households were participating in the Food Stamp Program:

- **99,000** AFDC households with **313,000** persons.
- **109,000** Other Low Income households with **165,000** persons.
- With a total of more than **478,000** persons, including about **229,000** adults and more than **248,000** children
- **48.9 percent** of the households were in Essex (**52,600**), Hudson (**28,700**) and Camden (**20,000**) Counties.
- The number of adults exceeded the number of children in Food Stamp households in **seven** counties (Bergen, Hunterdon, Monmouth, Morris, Somerset, Sussex, and Warren).

Food Stamp households in New Jersey remained in the 220,000 to 223,000 range from December 1994 through June 1996, except for a spike in March 1995. From May to December 1996 total Food Stamp households declined from almost 223,000 to 207,000, or more than 2000 per month.

- The number of Other Low Income households has exceeded the number of AFDC(FS) households since November 1995, with a difference of nearly **10,000** in December 1996. The average number of Other Low Income households receiving Food Stamps was **106,000** in 1994 and **112,000** in 1996. AFDC(FS) households averaged nearly **115,000** in 1994, and less than **106,000** in 1996. Since May 1996 both have been declining.
- After a peak of **529,000** in March 1995, the number of Total Recipients has been moving downward. Near **515,000** from July 1995 through May 1996, the level dropped substantially and was less than **478,000** by December 1996. This is a total decline of more than **50,000** or almost **10 percent** since March 1995.
- The number of Recipient Adults averaged **246,000** for 1994 through the first five months of 1996. From May through December the number declined from about **247,000** to **229,000**.
- After a peak of more than **279,000** in March 1995, the number of Recipient Children has been moving downward. By December 1996 the level was below **249,000**.

EMERGENCY ASSISTANCE (Tables 3, 7 and 9, Graphs 3, 7 and 9)

In December 1996 4244 eligible AFDC families and 321 SSI recipients received Emergency Assistance (EA) payments in New Jersey. For AFDC families this included:

- **1492** families with Temporary Rental Assistance (TRA)
- **400** motel placements and **286** emergency shelter placements
- All other AFDC-EA accounted for **2066** families, including back rent, back utilities, security deposits, furnishings, clothing and food allowance, or transitional housing.
- **1060** AFDC families in Essex County received EA, with **555** in Middlesex, and **463** in Passaic. All other counties had between **1** and **378**, with twelve counties **under 100**.

In the past two years, the average number of AFDC families receiving EA payments was 7300 in 1994, 5800 in 1995, and 4800 in 1996.

- The number of AFDC families provided TRA each month has declined steadily from an average of **3200** in 1994 to **1700** in 1996.
- Emergency Shelter has been provided to an average of **under 400** AFDC families for 1994 through 1996. Motel Housing declined from an average of close to **500** in 1994 to about **300** in 1996.
- An average of **3300** families received Other EA in 1994, **2800** in 1995, and **2400** in 1996.

For 1994 there were an average of 7800 GA EA recipients, 7400 for 1995, and 7000 for the first ten months of 1996. TRA payments were made to an average of 4700 recipients in 1994, 4400 in 1995, and less than 4200 in the first ten months of 1996.

JOBS/FDP PARTICIPATION RATES (Table 8, Graph 8)

December 1996 was the third month with a Statewide JOBS/FDP participation rate of almost 32 percent. At 31.8 percent it was unchanged from November. This more than five percentage points above December 1995 when the rate was 26.4 percent and more than ten percentage points above two years ago when the rate was 21.5 percent. A clear upward shift has been evident over the past two years. All Counties have been over 20 percent for at least three months.

- Most counties have shown upward movement in participation rates in the past two years, including Burlington, Camden, Cape May, Essex, Gloucester, Hudson, Hunterdon, Middlesex, Monmouth, Ocean, and Passaic. Cumberland has maintained high participation rates, as have Atlantic, Salem, Sussex, and Warren but with greater fluctuations. Morris increased markedly in 1995 and remains at record levels (at or near 100 percent), as did Somerset in 1996 which also exceeded 80 percent in the last three months. Bergen, Mercer and Union have had little or no increase overall.
- For December 1996 County rates were distributed as follows:
 - 20 to 29 percent** -- Bergen, Camden, Essex, Gloucester, Hudson, Ocean, Union
 - 30 to 39 percent** -- Burlington, Cape May, Mercer, Monmouth
 - 40 to 49 percent** -- Hunterdon, Middlesex, Passaic, Salem
 - 50 percent +** -- Atlantic, Cumberland, Morris, Somerset, Sussex, Warren
- From November to December 1996, participation rates increased in 9 counties.

GENERAL ASSISTANCE (Table 9, Graph 9)

October 1996 (the latest available information) had the lowest number of GA recipients in the two year period, and was the fourth consecutive month with less than 31,000. GA recipients averaged 36,200 for 1994, 33,600 in 1995 and 32,300 for the first ten months of 1996.

- The number of employable GA recipients closely mirrored the changes in total GA recipients. The October level was the second month **below 20,000**, following three months **below 21,000**. Employable GA recipients averaged about **24,400** for 1994, and about **22,400** in 1995 and **21,600** for the first ten months of 1996.
- Over the two year period Unemployable GA recipients remained within a relatively narrow range. The level remained around **11,000 to 12,000** from September 1994 through October 1995. It declined to about **10,000** from November 1995 through January 1996, and remained **between 10,000 and 11,000** through October 1996.

CHILD SUPPORT AND PATERNITY (Table 10)

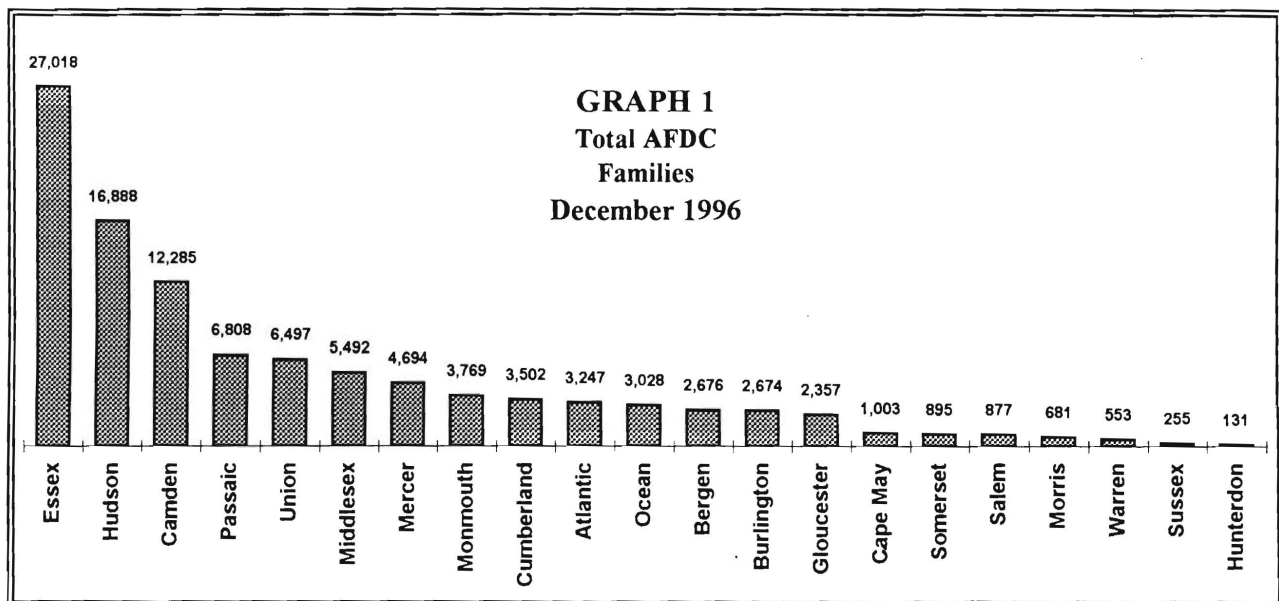
The total distribution of collections of the Child Support and Paternity Program increased by 11.1 percent from \$250 million in the first six months of SFY 1996 (July - December 1995) to \$278 million in the first six months of SFY 1997 (July - December 1996).

New Jersey Department of Human Services
Division of Family Development

Table 1
AFDC Program
NUMBER OF APPLICATIONS AND TERMINATIONS DURING REPORT MONTH, AND
NUMBER OF ELIGIBLE FAMILIES RECEIVING AFDC AT END OF REPORT MONTH
December 1996

County	Applications Approved	Terminations	Regular AFDC (C Segment)	Unemployed Parents(F)	State AFDC(N)	Medicaid Only	Total AFDC
Atlantic	208	324	2,997	76	52	122	3,247
Bergen	96	135	2,394	108	101	73	2,676
Burlington	229	221	2,324	69	72	209	2,674
Camden	664	718	10,834	377	359	715	12,285
Cape May	120	101	853	41	55	54	1,003
Cumberland	253	236	2,997	137	173	195	3,502
Essex	800	1,057	25,782	331	197	708	27,018
Gloucester	194	225	2,016	91	62	188	2,357
Hudson	434	657	15,153	254	573	908	16,888
Hunterdon	14	18	104	3	5	19	131
Mercer	375	404	4,165	91	101	337	4,694
Middlesex	260	423	4,601	188	218	485	5,492
Monmouth	227	258	3,513	58	130	68	3,769
Morris	42	60	626	15	15	25	681
Ocean	206	209	2,571	112	126	219	3,028
Passaic	347	414	6,326	200	219	63	6,808
Salem	74	73	775	11	33	58	877
Somerset	85	107	741	32	26	96	895
Sussex	12	48	205	8	2	40	255
Union	341	399	5,871	84	161	381	6,497
Warren	37	50	474	22	28	29	553
NJ TOTAL	5,018	6,137	95,322	2,308	2,708	4,992	105,330

Data is derived from NJ Division of Family Development's FAMIS report #FF-012



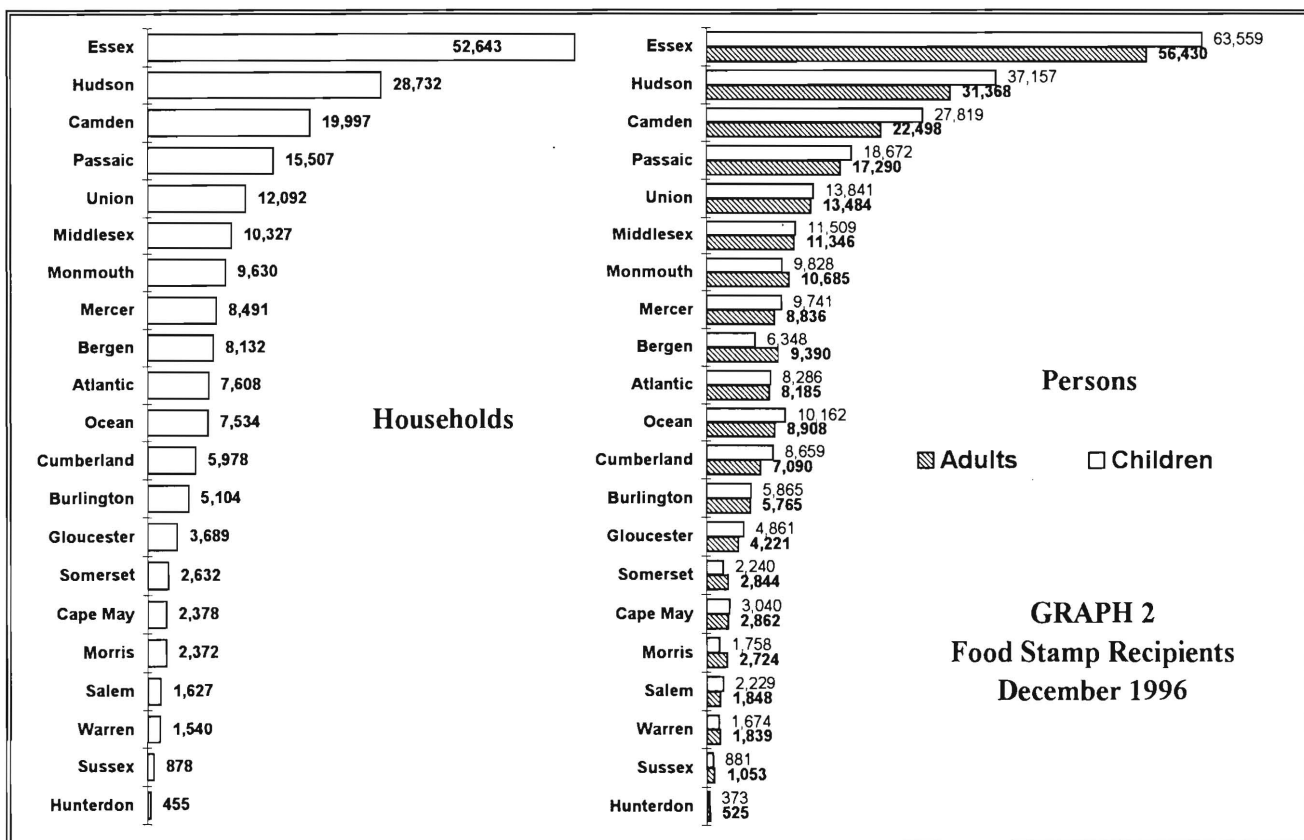
New Jersey Department of Human Services
Division of Family Development

Table 2
FOOD STAMP Program
NUMBER OF ATP'S ISSUED TO HOUSEHOLDS, PERSONS, ADULTS
AND CHILDREN AT THE END OF THE REPORT MONTH
December 1996

County	HOUSEHOLDS			PERSONS				
	AFDC	Other low income	TOTAL	TOTAL	AFDC	Other low income	Adults	Children
Atlantic	3,090	4,518	7,608	16,471	10,021	6,450	8,185	8,286
Bergen	2,439	5,693	8,132	15,738	7,254	8,484	9,390	6,348
Burlington	2,294	2,810	5,104	11,630	7,130	4,500	5,765	5,865
Camden	11,469	8,528	19,997	50,317	37,766	12,551	22,498	27,819
Cape May	1,101	1,277	2,378	5,902	3,725	2,177	2,862	3,040
Cumberland	3,341	2,637	5,978	15,749	11,456	4,293	7,090	8,659
Essex	26,525	26,118	52,643	119,989	82,587	37,402	56,430	63,559
Gloucester	2,032	1,657	3,689	9,082	6,427	2,655	4,221	4,861
Hudson	15,730	13,002	28,732	68,525	48,353	20,172	31,368	37,157
Hunterdon	119	336	455	898	366	532	525	373
Mercer	4,100	4,391	8,491	18,577	12,778	5,799	8,836	9,741
Middlesex	4,880	5,447	10,327	22,855	14,758	8,097	11,346	11,509
Monmouth	3,610	6,020	9,630	20,513	11,515	8,998	10,685	9,828
Morris	584	1,788	2,372	4,482	1,753	2,729	2,724	1,758
Ocean	3,129	4,405	7,534	19,070	10,460	8,610	8,908	10,162
Passaic	6,333	9,174	15,507	35,962	21,135	14,827	17,290	18,672
Salem	847	780	1,627	4,077	2,803	1,274	1,848	2,229
Somerset	839	1,793	2,632	5,084	2,497	2,587	2,844	2,240
Sussex	265	613	878	1,934	802	1,132	1,053	881
Union	5,474	6,618	12,092	27,325	17,590	9,735	13,484	13,841
Warren	528	1,012	1,540	3,513	1,693	1,820	1,839	1,674
NJ TOTAL	98,729	108,617	207,346	477,693	312,869	164,824	229,191	248,502

ATP - Authorization to Participate

Data is derived from NJ Division of Family Development's FAMIS report # FB-160.



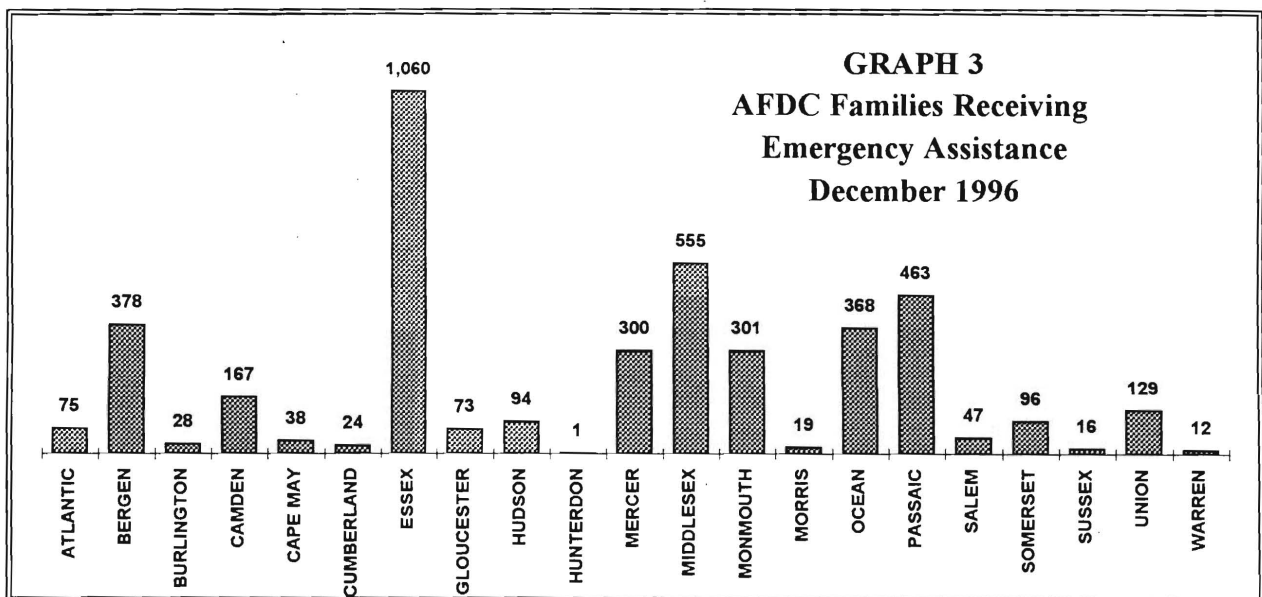
New Jersey Department of Human Services
Division of Family Development

Table 3
AFDC/SSI EMERGENCY ASSISTANCE
NUMBER OF ELIGIBLE FAMILIES RECEIVING EMERGENCY ASSISTANCE PAYMENTS
(UNDUPLICATED CASES)

December 1996

County	AFDC Families Receiving Emergency Assistance					SSI Recipients Receiving EA
	TOTAL AFDC-EA	Temporary Rental Assist.	Motel Housing	Emergency Shelter	Other AFDC-EA	
ATLANTIC	75	36	4	21	14	23
BERGEN	378	185	49	18	126	9
BURLINGTON	28	2	0	15	11	0
CAMDEN	167	67	0	24	76	18
CAPE MAY	38	10	3	3	22	7
CUMBERLAND	24	1	1	7	15	5
ESSEX	1,060	452	44	74	490	36
GLOUCESTER	73	33	2	20	18	5
HUDSON	94	15	7	11	61	5
HUNTERDON	1	0	0	1	0	0
MERCER	300	94	60	3	143	23
MIDDLESEX	555	302	22	5	226	37
MONMOUTH	301	130	29	3	139	13
MORRIS	19	0	1	5	13	8
OCEAN	368	122	136	0	110	77
PASSAIC	463	6	7	24	426	31
SALEM	47	7	9	2	29	4
SOMERSET	96	11	12	27	46	9
SUSSEX	16	2	6	3	5	2
UNION	129	17	1	18	93	9
WARREN	12	0	7	2	3	0
NJ TOTAL	4,244	1,492	400	286	2,066	321

Derived from NJ Division of Family Development FAMIS REports #FM457 and #FM430-03A



New Jersey Department of Human Services
Division of Family Development

TABLE 4
FAMILY DEVELOPMENT PROGRAM
STATISTICAL SUMMARY

COUNTY	SNAPSHOT OF ACTIVITY AS OF DECEMBER 1996				ACTIVITY FOR MONTH OF DECEMBER 1996					
	TOTAL NONEXMT JOBS/FDP RECI- PIENTS	EMPLOYMENT DIRECTED ACTIVITIES(1)			PARTIC IN EDAs & RECEIVE SUPPORT SERVICES		PARTIC W/ 1st C M INTV	# EMPL THIS MONTH & STILL REC AFDC	# CLSD ON FAMIS RE: EARNINGS (2)	POST AFDC & REC CHILD CARE
		TRAIN- ING	EDUCA- TION	JOB SEARCH	TREs	CHILD CARE				
ATLANTIC	1,124	329	139	56	283	180	166	59	79	205
BERGEN	1,713	216	108	40	203	146	35	18	43	84
BURLINGTON	1,258	242	89	55	302	175	134	48	64	195
CAMDEN	8,405	719	434	80	722	569	358	43	146	256
CAPE MAY	551	100	30	53	71	25	53	3	21	13
CUMBERLAND	1,406	235	160	121	471	251	162	55	76	118
ESSEX	16,587	1,739	1,034	189	2,213	1,593	397	95	256	223
GLOUCESTER	975	180	83	52	371	124	81	11	33	68
HUDSON	10,495	1,335	1,063	231	1,881	1,157	203	42	206	309
HUNTERDON	72	8	17	10	7	7	3	3	4	17
MERCER	2,899	287	252	33	230	249	56	27	95	149
MIDDLESEX	2,862	307	235	301	425	212	210	97	109	176
MONMOUTH	2,352	278	219	148	407	338	60	36	93	200
MORRIS	315	221	33	58	52	90	35	18	22	62
OCEAN	1,631	165	93	91	108	102	96	39	70	181
PASSAIC	3,512	875	312	53	968	413	124	49	126	137
SALEM	362	88	96	12	114	71	17	4	13	47
SOMERSET	447	70	70	15	71	79	14	14	16	45
SUSSEX	128	31	30	23	40	26	11	8	18	30
UNION	3,662	342	235	189	434	220	74	14	99	133
WARREN	336	59	35	34	27	23	3	7	22	22
STATE	61,092	7,826	4,767	1,844	9,400	6,050	2,292	690	1,611	2,670

(1) - The number of participants receiving support services may occasionally exceed the number actively participating in EDAs. This can result from extended assessment or evaluation activities, or the issuance of bridge payments.

(2) - FAMIS file date: 12/20/96

New Jersey Department of Human Services
Division of Family Development

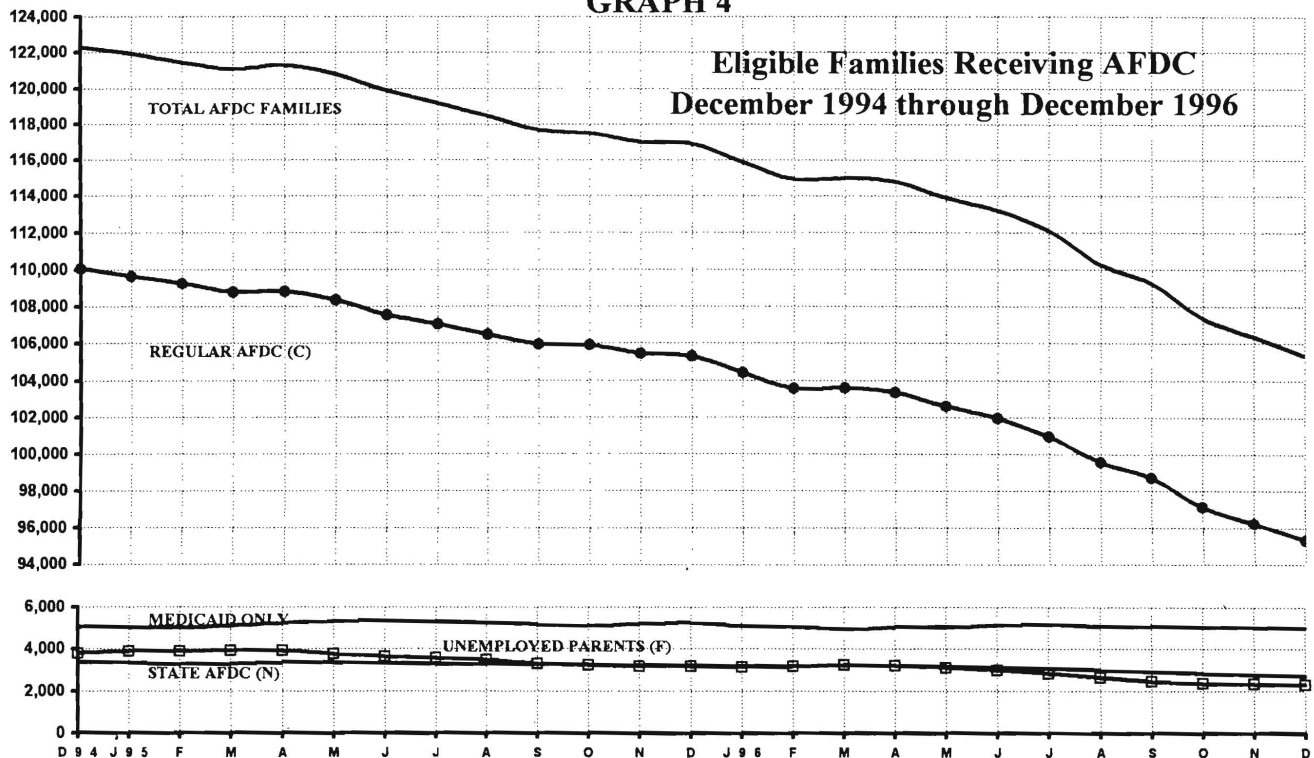
Table 5
AFDC Program

**NUMBER OF APPLICATIONS AND TERMINATIONS DURING REPORT MONTH, AND
NUMBER OF ELIGIBLE FAMILIES RECEIVING AFDC AT END OF REPORT MONTH**
December 1994 through December 1996

	Applications Approved	Terminations	Regular AFDC (C Segment)	Unemployed Parents(F)	State AFDC(N)	Medicaid Only	Total AFDC
1994 Dec	5,682	5,890	110,070	3,789	3,360	5,065	122,284
Average (12 MONTHS)	6,014	6,150	110,901	4,195	3,351	4,928	123,375
1995 Jan	5,583	5,944	109,645	3,875	3,358	5,045	121,923
Feb	5,964	6,515	109,261	3,878	3,270	5,016	121,425
Mar	5,810	6,221	108,800	3,903	3,305	5,088	121,096
Apr	7,096	7,086	108,822	3,907	3,365	5,209	121,303
May	5,288	5,784	108,343	3,773	3,369	5,328	120,813
Jun	5,558	6,458	107,541	3,639	3,336	5,358	119,874
Jul	5,977	6,781	107,028	3,574	3,286	5,293	119,181
Aug	5,547	6,294	106,475	3,489	3,260	5,239	118,463
Sep	5,922	6,647	105,943	3,303	3,260	5,175	117,681
Oct	7,062	7,359	105,917	3,224	3,257	5,110	117,508
Nov	6,083	6,660	105,445	3,164	3,199	5,189	116,997
Dec	5,582	5,775	105,287	3,165	3,189	5,258	116,899
Average	5,956	6,460	107,376	3,575	3,288	5,192	119,430
1996 Jan	5,332	6,236	104,430	3,139	3,173	5,113	115,855
Feb	5,217	6,283	103,561	3,161	3,170	5,060	114,952
Mar	6,317	6,302	103,598	3,230	3,217	4,956	115,001
Apr	6,896	7,241	103,352	3,192	3,211	5,040	114,795
May	5,335	6,152	102,600	3,112	3,163	5,038	113,913
Jun	5,319	6,121	101,947	2,999	3,117	5,116	113,179
Jul	5,874	7,027	100,968	2,843	3,073	5,200	112,084
Aug	5,014	6,789	99,567	2,638	2,993	5,053	110,251
Sep	6,311	7,440	98,744	2,462	2,933	5,097	109,236
Oct	5,213	7,015	97,152	2,368	2,822	5,026	107,368
Nov	5,374	6,549	96,238	2,329	2,752	5,034	106,353
Dec	5,018	6,137	95,322	2,308	2,708	4,992	105,330
Average	5,602	6,608	100,623	2,815	3,028	5,060	111,526

Data is derived from NJ Division of Family Development's FAMIS report #FF-012

GRAPH 4



New Jersey Department of Human Services

Division of Family Development

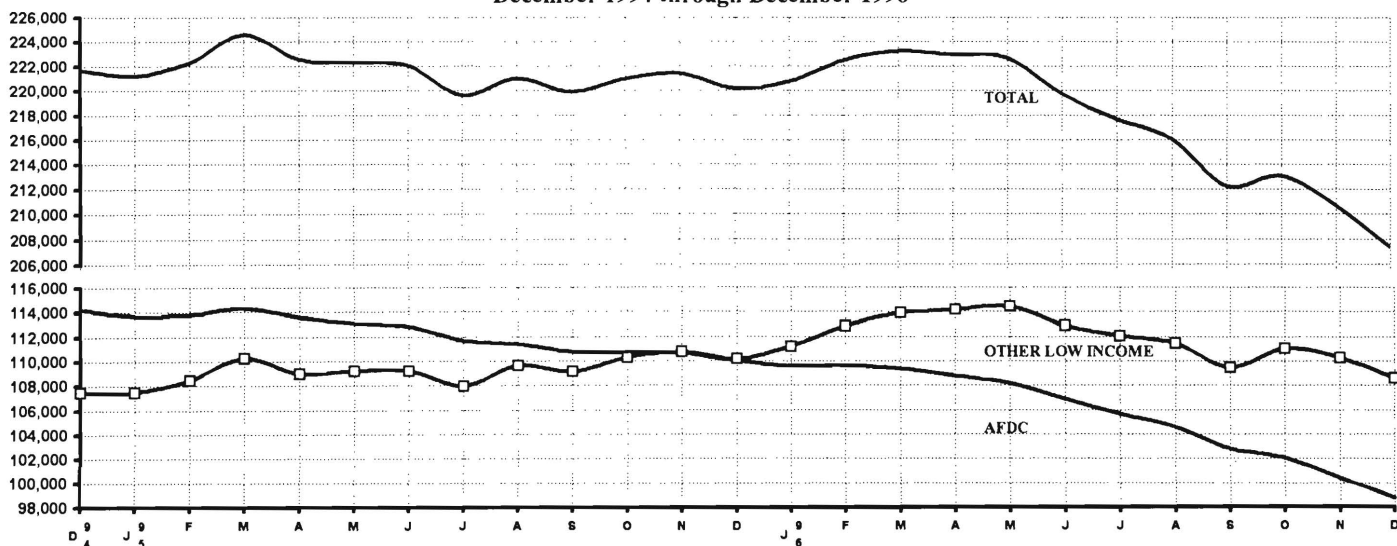
TABLE 6
FOOD STAMP Program State Summary
NUMBER OF ATP'S ISSUED TO HOUSEHOLDS, PERSONS
ADULTS AND CHILDREN AT THE END OF THE REPORT MONTH
December 1994 through December 1996

		<u>HOUSEHOLDS</u>			<u>PERSONS</u>				
		AFDC	Other low income	TOTAL	TOTAL	AFDC	Other low income	Adults	Children
1994	Dec	114,232	107,467	221,699	523,825	358,446	165,379	246,517	277,308
AVERAGE (12 months)		114,789	105,924	220,714	525,325	361,323	164,003	246,043	279,282
1995	Jan	113,691	107,493	221,184	522,125	356,763	165,362	245,837	276,288
	Feb	113,830	108,421	222,251	524,344	357,419	166,925	247,107	277,237
	Mar	114,339	110,279	224,618	529,456	359,404	170,052	249,994	279,462
	Apr	113,588	108,991	222,579	524,102	356,717	167,385	247,367	276,735
	May	113,125	109,171	222,296	522,173	355,099	167,074	246,949	275,224
	Jun	112,827	109,198	222,025	521,084	354,211	166,873	246,557	274,527
	Jul	111,635	107,978	219,613	515,478	350,378	165,100	243,727	271,751
	Aug	111,415	109,603	221,018	516,618	349,372	167,246	245,110	271,508
	Sep	110,760	109,154	219,914	513,517	347,126	166,391	243,723	269,794
	Oct	110,697	110,268	220,965	514,598	346,519	168,079	244,911	269,687
	Nov	110,630	110,763	221,393	514,823	346,034	168,789	245,455	269,368
	Dec	109,992	110,155	220,147	511,727	343,955	167,772	243,965	267,762
AVERAGE		112,211	109,290	221,500	519,170	351,916	167,254	245,892	273,279
1996	Jan	109,554	111,166	220,720	512,165	342,778	169,387	244,801	267,364
	Feb	109,649	112,813	222,462	515,181	343,314	171,867	246,961	268,220
	Mar	109,364	113,895	223,259	515,676	342,361	173,315	247,695	267,981
	Apr	108,787	114,163	222,950	514,375	340,597	173,778	247,380	266,995
	May	108,205	114,458	222,663	513,213	338,891	174,322	246,918	266,295
	Jun	106,875	112,888	219,763	506,926	334,762	172,164	243,422	263,504
	Jul	105,653	112,023	217,676	501,575	331,157	170,418	240,840	260,735
	Aug	104,568	111,473	216,041	497,436	328,055	169,381	238,804	258,632
	Sep	102,827	109,441	212,268	488,765	322,572	166,193	234,442	254,323
	Oct	102,088	111,008	213,096	489,991	321,226	168,765	235,401	254,590
	Nov	100,411	110,254	210,665	484,378	317,163	167,215	232,756	251,622
	Dec	98,729	108,617	207,346	477,693	312,869	164,824	229,191	248,502
AVERAGE		105,559	111,850	217,409	501,448	331,312	170,136	240,718	260,730

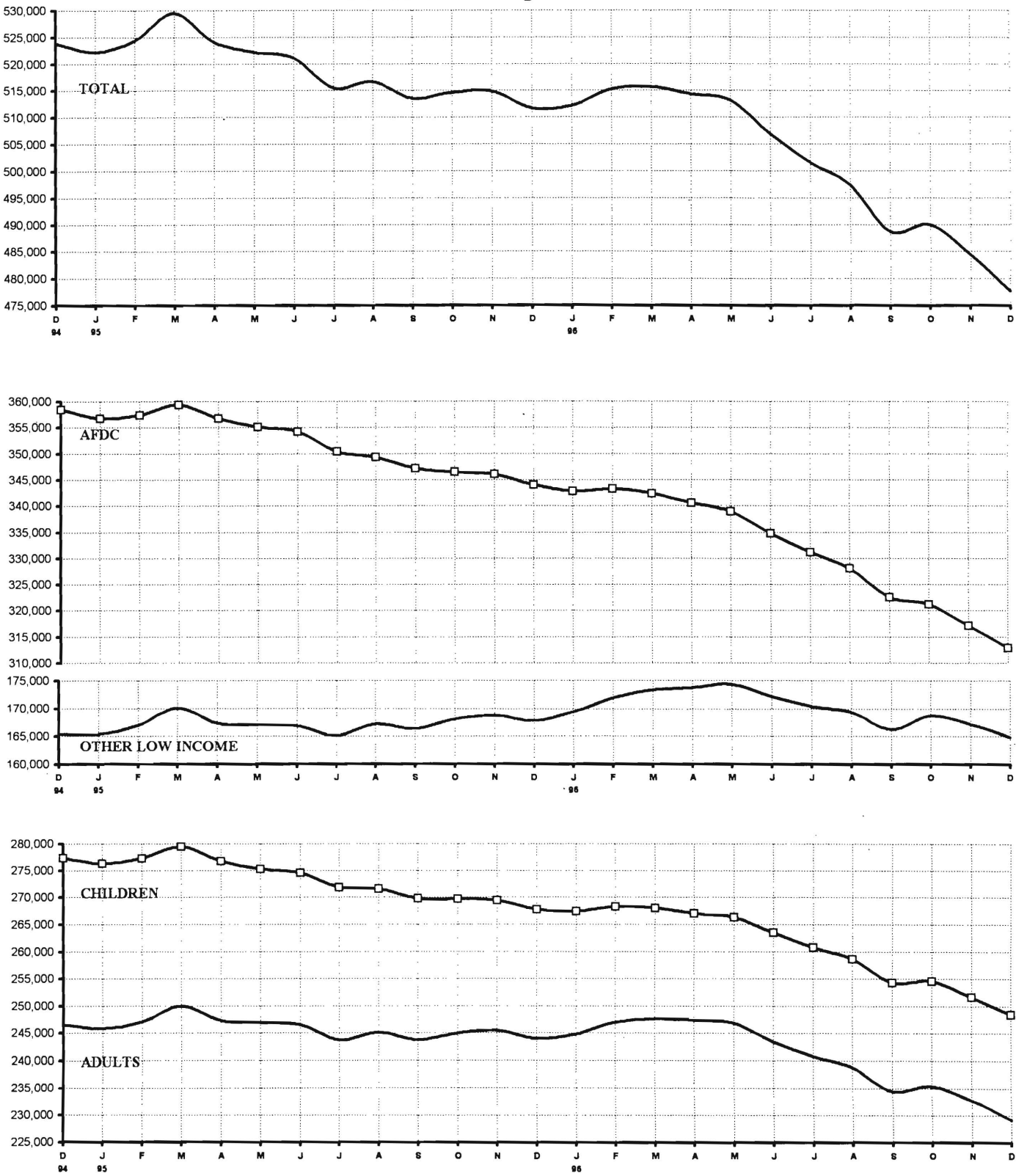
ATP - Authorization to Participate

Data is derived from NJ Division of Family Development's FAMIS report # FB-160.

GRAPH 5
Food Stamp Households
December 1994 through December 1996



GRAPH 6
Food Stamp Recipients
December 1994 through December 1996



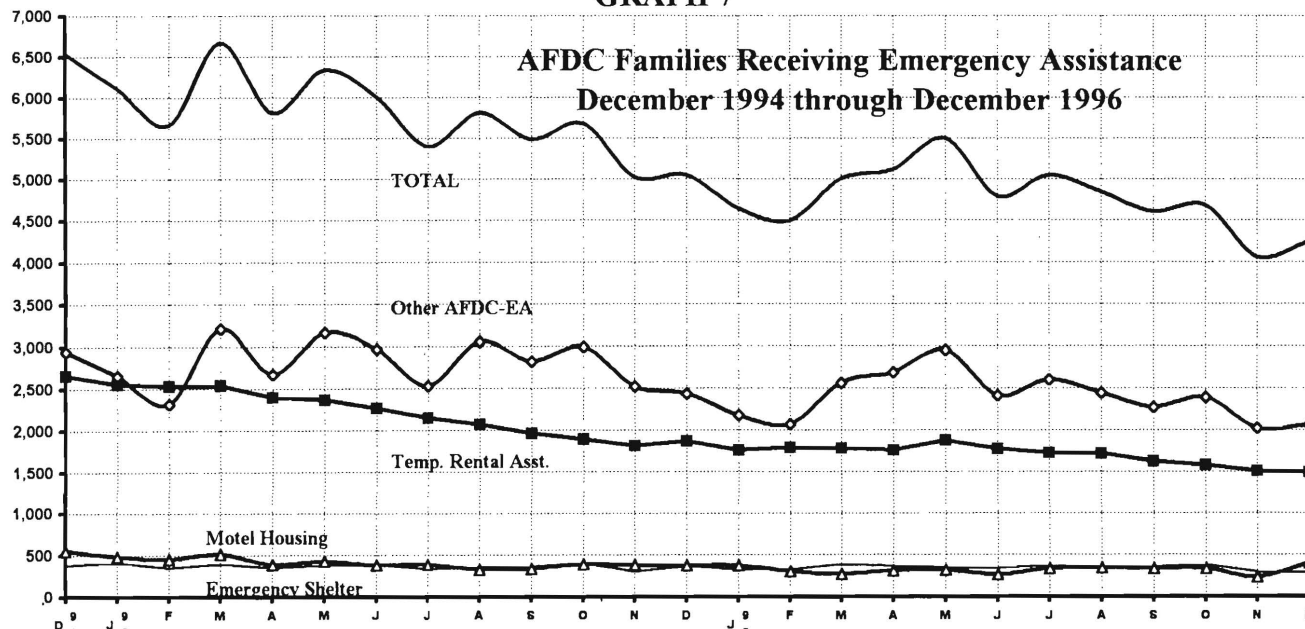
New Jersey Department of Human Services
Division of Family Development

TABLE 7
EMERGENCY ASSISTANCE Program for AFDC Recipients, State Summary
NUMBER OF ELIGIBLE FAMILIES RECEIVING EMERGENCY ASSISTANCE PAYMENTS
(UNDUPLICATED CASES)
December 1994 through December 1996

	Total families receiving EA	Temporary rental assistance	Motel Housing	Emergency Shelter	Other AFDC-EA
1994 DEC	6,540	2,658	554	379	2,949
Average (12 months)	7,326	3,218	468	379	3,260
1995 JAN	6,115	2,557	487	413	2,658
FEB	5,664	2,535	456	354	2,319
MAR	6,668	2,542	516	402	3,208
APR	5,815	2,402	387	351	2,675
MAY	6,338	2,364	427	381	3,166
JUN	6,007	2,268	382	387	2,970
JUL	5,402	2,149	389	334	2,530
AUG	5,813	2,068	331	362	3,052
SEP	5,482	1,958	336	364	2,824
OCT	5,678	1,891	388	410	2,989
NOV	5,024	1,816	384	302	2,522
DEC	5,048	1,864	377	369	2,438
Average	5,755	2,201	405	369	2,779
1996 JAN	4,639	1,761	374	325	2,179
FEB	4,490	1,788	305	330	2,067
MAR	5,001	1,779	270	388	2,564
APR	5,118	1,760	309	364	2,685
MAY	5,498	1,873	323	350	2,952
JUN	4,791	1,772	266	341	2,412
JUL	5,044	1,729	335	377	2,603
AUG	4,845	1,716	346	339	2,444
SEP	4,600	1,625	337	362	2,276
OCT	4,683	1,576	334	385	2,388
NOV	4,059	1,507	237	294	2,021
DEC	4,244	1,492	400	286	2,066
Average	4,751	1,698	320	345	2,388

Data derived from NJ Division of Family Development FAMIS Report #FM457 and #FM430-03a.

GRAPH 7

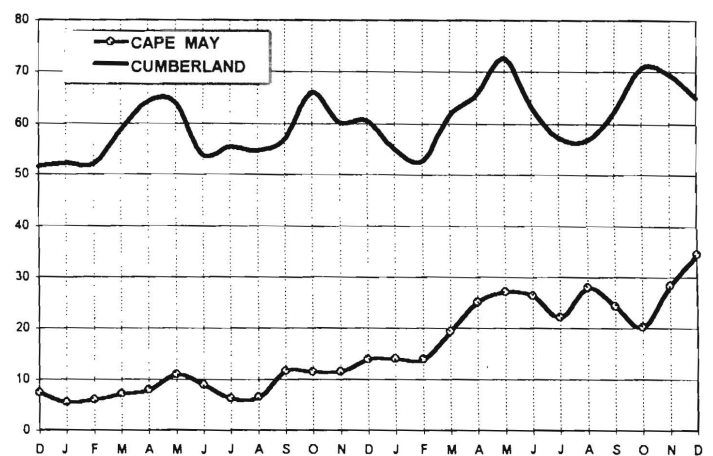
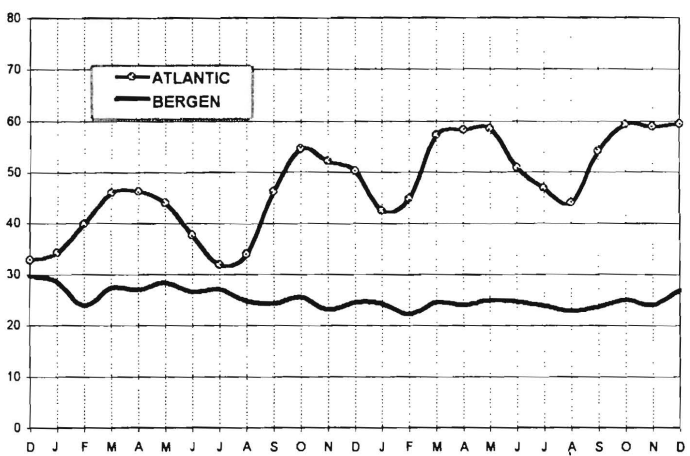
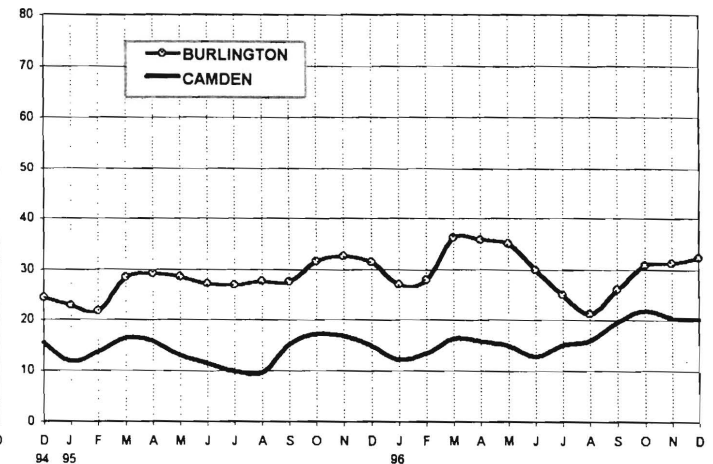
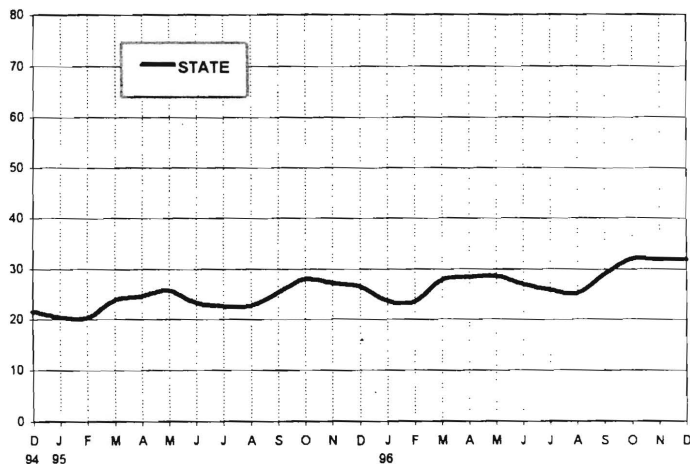


**New Jersey Department of Human Services
Division of Family Development**

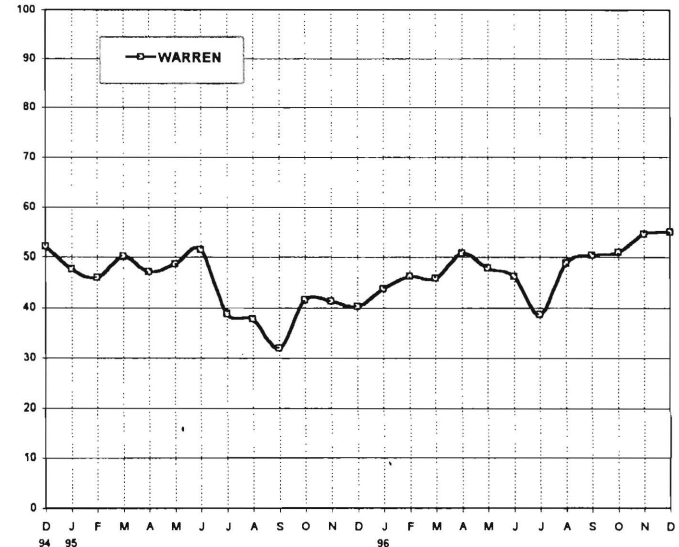
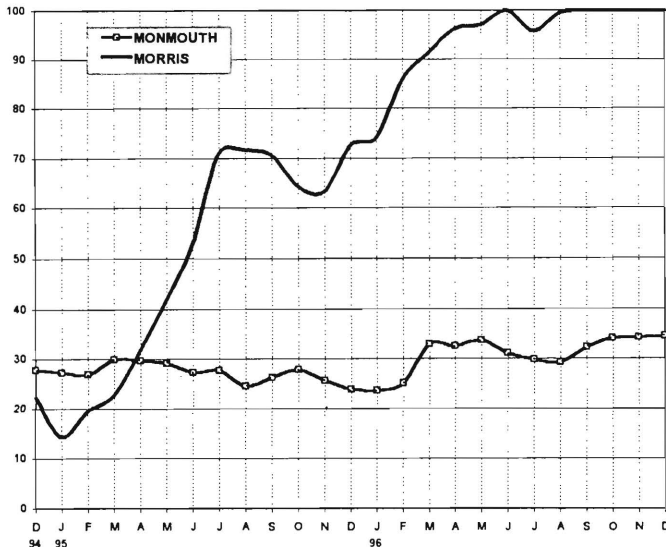
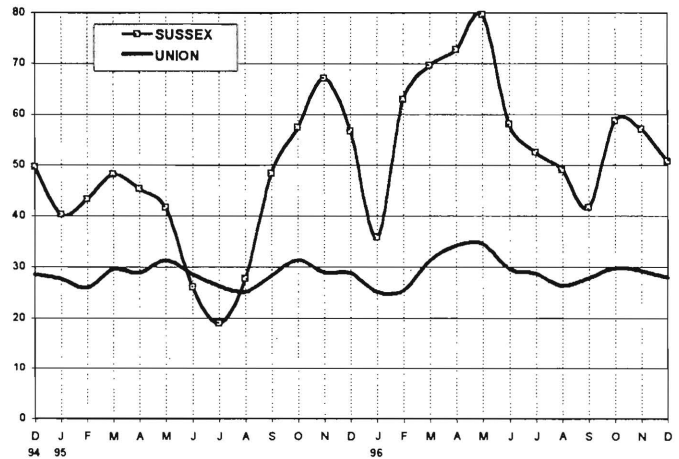
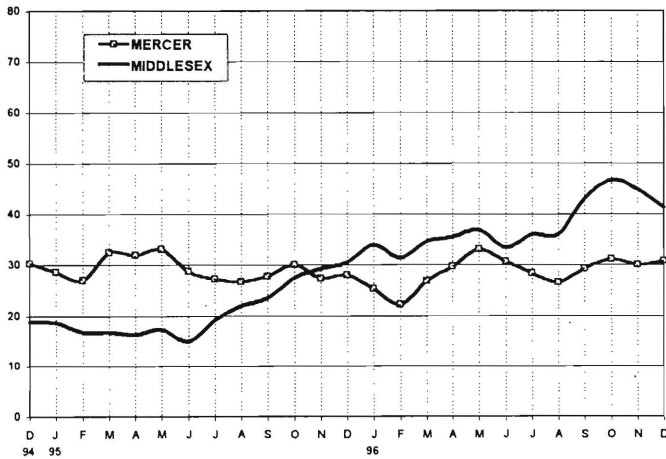
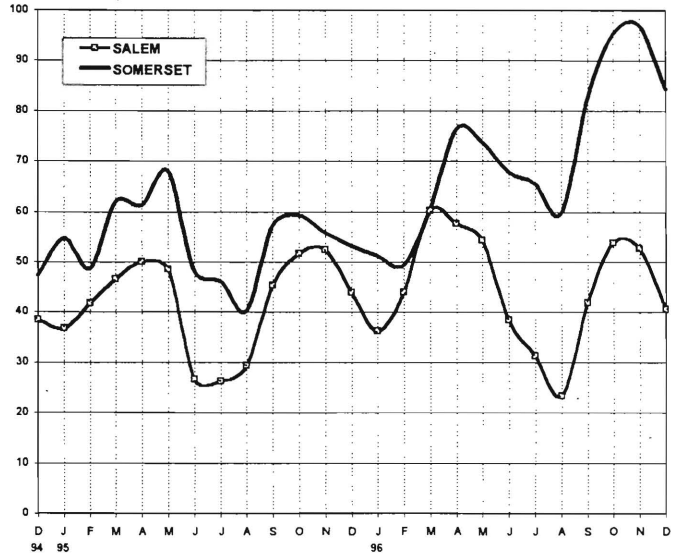
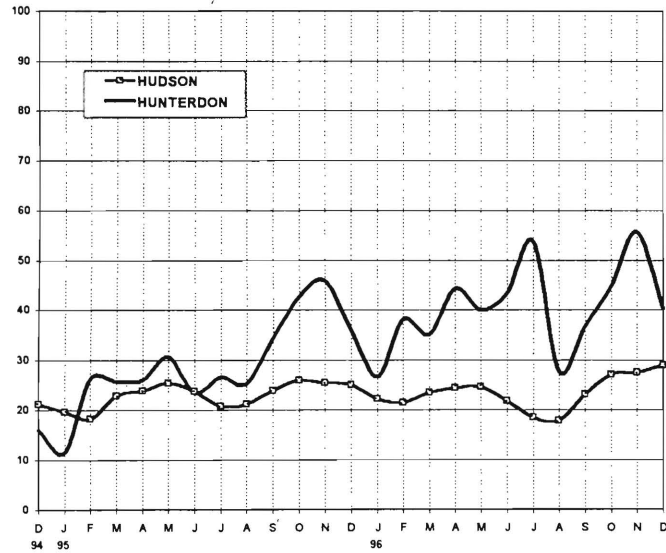
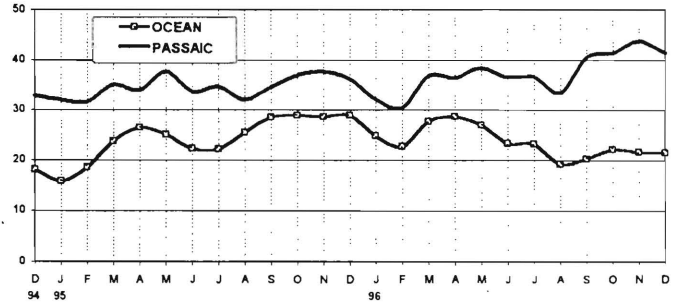
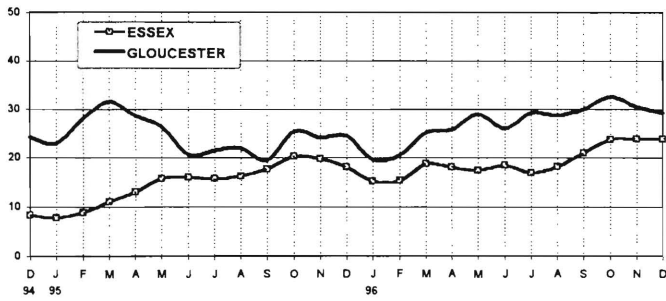
**TABLE 8
JOBS/FDP PARTICIPATION RATES BY MONTH
(PERCENT)**

	STATE	ATLANTIC	BERGEN	BURLINGTON	CAMDEN	CAPE MAY	CUMBERLAND	ESSEX	GLOUCESTER	HUDSON	HUNTERDON	MERCER	MIDDLESEX	MONMOUTH	MORRIS	OCEAN	PASSAIC	SALEM	SOMERSET	SUSSEX	UNION	WARREN
DEC	21.5	32.8	29.7	24.4	15.5	7.5	51.5	8.3	24.2	21.1	16.1	30.4	18.8	27.8	22.4	18.1	33.0	38.3	47.4	49.6	28.6	52.2
95 JAN	20.4	34.2	28.6	22.9	11.7	5.5	52.2	7.8	22.8	19.6	11.5	28.7	18.8	27.3	14.4	15.8	32.1	36.7	54.7	40.2	27.7	47.7
FEB	20.3	39.8	23.9	21.8	13.6	6.0	52.1	8.8	28.1	18.1	26.2	27.0	16.8	26.8	19.5	18.6	31.7	41.7	48.7	43.3	26.0	46.1
MAR	23.8	46.1	27.3	28.5	16.3	7.2	58.6	11.0	31.6	22.9	25.8	32.5	16.9	29.9	22.9	23.6	35.1	46.6	62.0	48.2	29.6	50.3
APR	24.5	46.3	26.9	29.2	15.7	7.9	64.1	13.0	28.7	23.8	26.1	31.9	16.3	29.6	31.9	26.4	33.9	50.0	61.3	45.3	28.9	47.2
MAY	25.7	44.0	28.3	28.6	12.9	10.9	64.0	15.7	26.4	25.4	30.6	33.1	17.4	29.1	42.0	25.0	37.7	48.4	68.0	41.7	31.4	48.7
JUN	23.3	37.7	26.5	27.1	11.3	9.0	53.8	16.0	20.7	23.8	23.5	28.7	15.1	27.2	52.9	22.3	33.6	26.7	48.1	26.1	28.6	51.5
JUL	22.5	31.9	27.0	26.9	9.8	6.3	55.3	15.8	21.5	20.8	26.6	27.3	19.2	27.7	71.0	22.1	34.7	26.3	46.1	19.0	26.3	38.9
AUG	22.6	33.9	24.8	27.7	9.5	6.5	54.6	16.2	22.0	21.2	25.2	26.7	22.0	24.5	71.7	25.4	32.0	29.4	40.3	27.7	25.2	37.8
SEP	25.2	46.4	24.2	27.6	15.1	11.7	56.9	17.7	19.5	23.8	34.3	27.8	23.6	26.2	70.7	28.6	34.5	45.3	57.3	48.4	28.4	32.0
OCT	27.9	54.6	25.5	31.5	17.1	11.4	65.9	20.2	25.3	26.0	42.7	30.1	27.5	27.8	64.4	28.9	37.0	51.7	59.3	57.5	31.4	41.7
NOV	27.2	52.2	23.1	32.5	16.8	11.5	60.2	19.7	24.1	25.4	45.8	27.4	29.3	25.6	63.3	28.6	37.6	52.4	55.8	67.2	29.0	41.3
DEC	26.4	50.3	24.5	31.5	14.8	13.9	60.6	18.1	24.4	25.0	35.9	28.0	30.6	23.9	72.6	28.9	36.2	43.9	53.2	56.7	28.8	40.3
96 JAN	23.7	42.5	24.3	27.1	12.0	14.1	55.1	15.2	19.7	22.2	26.7	25.3	34.0	23.6	74.1	24.8	32.1	36.3	51.3	35.8	25.2	43.8
FEB	23.5	44.9	22.2	27.9	13.3	13.9	52.6	15.3	20.5	21.5	38.0	22.3	31.5	25.1	85.9	22.6	30.4	43.9	49.4	62.9	25.5	46.3
MAR	27.8	57.3	24.5	36.2	16.2	19.4	61.5	18.7	25.1	23.5	35.2	26.9	34.6	32.8	91.4	27.6	36.8	60.2	60.6	69.6	31.3	45.9
APR	28.3	58.3	24.0	35.9	15.7	25.1	65.6	18.1	25.7	24.4	44.3	29.7	35.5	32.5	96.2	28.6	36.4	57.6	76.4	72.6	34.2	50.9
MAY	28.6	58.6	24.9	35.1	14.8	27.2	72.7	17.4	29.0	24.6	40.0	33.0	36.9	33.7	97.1	26.9	38.5	54.3	73.7	79.7	34.6	48.0
JUN	26.9	50.9	24.6	30.0	12.7	26.4	63.4	18.5	26.0	21.8	43.4	30.7	33.4	31.1	100.0	23.3	36.5	38.4	67.8	58.2	29.7	46.3
JUL	25.7	46.9	23.9	25.0	15.0	22.2	57.3	16.9	29.2	18.4	53.8	28.5	36.0	29.8	95.8	23.1	36.7	31.3	65.6	52.5	28.8	38.8
AUG	25.1	44.1	22.9	21.2	15.9	27.9	56.6	18.2	28.7	17.8	27.7	26.7	36.0	29.2	99.5	19.2	33.4	23.4	59.9	49.1	26.4	48.9
SEP	29.0	54.1	23.7	26.0	19.5	24.3	62.1	20.9	30.0	23.0	36.6	29.3	43.0	32.3	100.0	20.2	40.5	41.8	82.7	41.7	27.8	50.4
OCT	31.9	59.3	25.0	30.8	21.8	20.2	70.6	23.7	32.6	27.1	44.7	31.2	46.7	34.0	100.0	22.1	41.3	53.9	95.5	58.7	29.8	51.0
NOV	31.8	58.9	24.0	31.2	20.4	28.4	69.5	23.7	30.5	27.5	55.7	30.0	44.8	34.2	100.0	21.6	43.8	52.7	97.1	57.1	29.3	54.7
DEC	31.8	59.4	26.9	32.4	20.2	34.5	65.1	23.8	29.2	29.0	40.3	30.8	41.3	34.4	100.0	21.5	41.4	40.6	84.3	50.8	27.9	55.1

**GRAPH 8
JOBS/FDP PARTICIPATION RATES (%)**



GRAPH 8 (CONTINUED)
JOBS/FDP PARTICIPATION RATES (%)



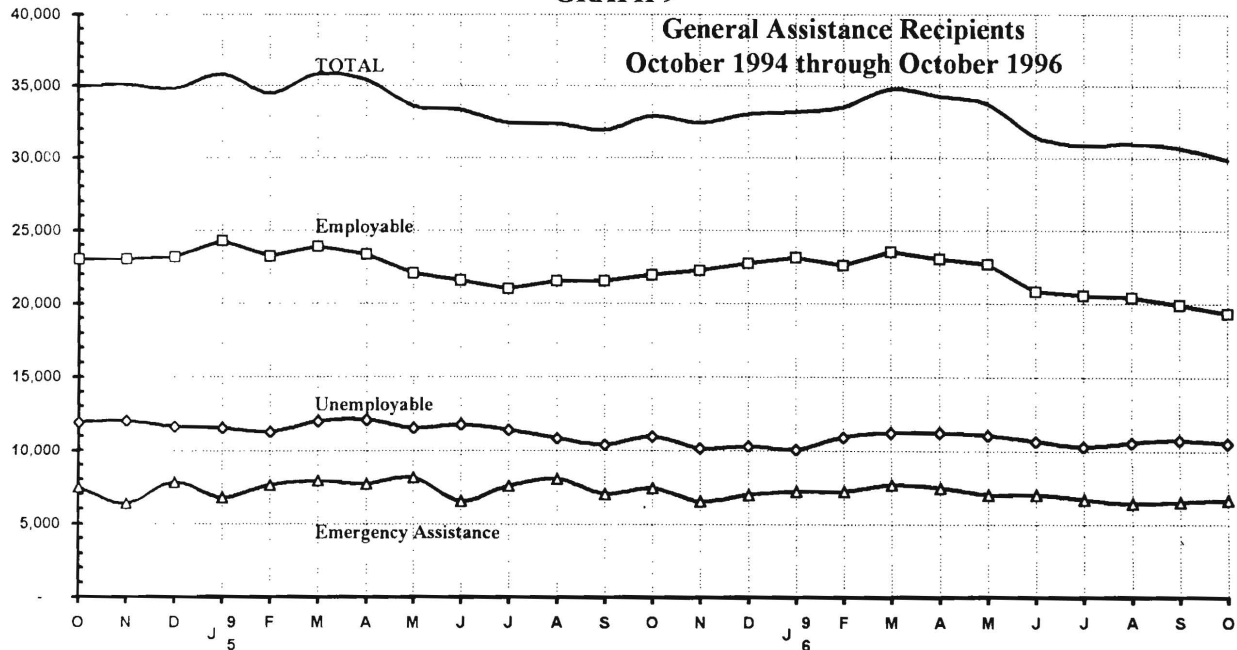
New Jersey Department of Human Services
Division of Family Development

TABLE 9
GENERAL ASSISTANCE Program, State Summary
NUMBER OF EMPLOYABLE AND UNEMPLOYABLE RECIPIENTS
AND EMERGENCY ASSISTANCE PAYMENTS DURING REPORT MONTH
October 1994 through October 1996

	<u>All Persons Aided</u>			<u>Emergency Assistance Payments</u>		
	Employable	Unemployable	Total	Temporary Rental Assist	Other GA-EA	Total
1994 Oct	23,031	11,950	34,981	4,472	3,032	7,504
Nov	23,046	12,045	35,091	4,607	1,762	6,369
Dec	23,142	11,642	34,784	4,657	3,137	7,794
AVERAGE (12 months)	24,374	11,813	36,187	4,651	3,181	7,832
1995 Jan	24,262	11,537	35,799	4,408	2,343	6,751
Feb	23,219	11,264	34,483	4,851	2,748	7,599
Mar	23,855	11,976	35,831	5,036	2,909	7,945
Apr	23,337	12,082	35,419	4,833	2,887	7,720
May	22,046	11,527	33,573	4,995	3,135	8,130
Jun	21,575	11,738	33,313	4,423	2,146	6,569
Jul	21,000	11,391	32,391	4,048	3,526	7,574
Aug	21,526	10,829	32,355	4,174	3,909	8,083
Sep	21,525	10,389	31,914	4,110	2,945	7,055
Oct	21,913	10,959	32,872	3,939	3,497	7,436
Nov	22,206	10,171	32,377	4,141	2,422	6,563
Dec	22,732	10,268	33,000	4,086	2,902	6,988
AVERAGE	22,433	11,178	33,611	4,420	2,947	7,368
1996 Jan	23,140	10,054	33,194	4,421	2,803	7,224
Feb	22,584	10,927	33,511	4,567	2,651	7,218
Mar	23,528	11,243	34,771	4,472	3,185	7,657
Apr	23,028	11,221	34,249	4,490	2,944	7,434
May	22,657	11,054	33,711	4,064	2,947	7,011
Jun	20,785	10,667	31,452	4,283	2,716	6,999
Jul	20,546	10,282	30,828	3,754	2,922	6,676
Aug	20,416	10,552	30,968	3,958	2,448	6,406
Sep	19,895	10,741	30,636	3,905	2,597	6,502
Oct	19,310	10,514	29,824	3,894	2,728	6,622
AVERAGE	21,589	10,726	32,314	4,181	2,794	6,975

Data Sources: NJ Division of Family Development, GA Fiscal Unit

GRAPH 9



New Jersey Department of Human Services
Division of Family Development

TABLE 10
CHILD SUPPORT AND PATERNITY COLLECTIONS
State Summary

COLLECTION SOURCE	Most Recent Six Months		
	7/95-12/95	7/96-12/96	% change
AFDC & FOSTER CARE			
Federal Tax	\$1,930,941	\$1,939,997	0.5%
State Tax	1,074,699	1,552,196	44.4%
Unempl. Ins. Ben.	2,407,058	2,847,770	18.3%
Income Withholding	22,561,593	20,357,010	-9.8%
Other/Own Behalf	8,010,601	8,783,873	9.7%
From Other States	1,625,253	1,762,584	8.4%
For Other States	3,640,296	4,192,349	15.2%
TOTAL COLLECTION	\$41,250,441	\$41,435,779	0.4%
TOTAL DISTRIBUTION	\$45,825,365	\$44,279,957	-3.4%
NON- AFDC			
Federal Tax	\$1,255,442	\$1,182,613	-5.8%
State Tax	1,356,348	2,052,019	51.3%
Unempl. Ins. Ben.	7,799,188	9,798,210	25.6%
Income Withholding	128,399,101	132,956,810	3.5%
Other/Own Behalf	67,859,423	67,239,814	-0.9%
From Other States	9,854,534	10,854,160	10.1%
For Other States	13,900,599	15,067,775	8.4%
TOTAL COLLECTION	\$230,424,635	\$239,151,401	3.8%
TOTAL DISTRIBUTION	\$204,557,195	\$233,912,980	14.4%
TOTAL			
Federal Tax	\$3,186,383	\$3,122,610	-2.0%
State Tax	2,431,047	3,604,215	48.3%
Unempl. Ins. Ben.	10,206,246	12,645,980	23.9%
Income Withholding	150,960,694	153,313,820	1.6%
Other/Own Behalf	75,870,024	76,023,687	0.2%
From Other States	11,479,787	12,616,744	9.9%
For Other States	17,540,895	19,260,124	9.8%
TOTAL COLLECTION	\$271,675,076	\$280,587,180	3.3%
TOTAL DISTRIBUTION	\$250,382,560	\$278,192,937	11.1%

Distributed amount represents collections reported and recognized by the Federal Office of Child Support Enforcement for calculating incentives and annual report to Congress

Source: DFD Office of Child Support and Paternity Programs

Explanatory Notes

The Department of Human Services Division of Family Development provides basic income and an opportunity to achieve self-sufficiency for individuals and families served by the Division's programs. The Division provides leadership, direction and supervision to those public agencies responsible for administering those programs and plans for and develops policies to promote self-sufficiency.

AID TO FAMILIES WITH DEPENDENT CHILDREN (AFDC) - Financial assistance for dependent children and their natural or adoptive parents, or certain other relatives recognized as taking the place of a parent.

Regular AFDC (C Segment) - assistance when only one parent is in the home due to death or absence, or both parents are in the home but at least one is incapacitated.

Unemployed Parents (F Segment) - assistance when both parents are in the home, neither is incapacitated and the primary wage earner meets the federally defined criteria for unemployment.

State AFDC (N Segment) - assistance when both parents are in the home, neither is incapacitated, and the primary wage earner does not meet the federal definition of unemployment.

Medicaid Only - families no longer receiving AFDC financial assistance but remaining eligible for Medicaid under applicable provisions which extend coverage beyond period of AFDC assistance.

FOOD STAMP PROGRAM (FS) - Authorized by Congress as a nutritional supplement program to provide low income households with more food of greater variety and better nutrition. Program eligibility is based on household income, resources, and expenses for medical, shelter, and dependent care. CWA staff refer certain recipients to the New Jersey Department of Labor for participation in the Food Stamp Employment and Training Program.

EMERGENCY ASSISTANCE (EA) - Payments to those eligible for AFDC, Supplemental Security Income or General Assistance, authorized during the 30 consecutive days immediately following the emergency (defined as a substantial loss of shelter, food, clothing, or household furnishings by fire, flood or other similar disaster) or if the eligible individual or family is in an imminent or actual state of homelessness.

JOBS/FDP

JOB OPPORTUNITY AND BASIC SKILLS PROGRAM (JOBS) - Federally mandated work/training program for recipients of AFDC established by the Family Support Act of 1988 under Part F of Title IV of the Social Security Act.

FAMILY DEVELOPMENT PROGRAM (FDP) - Reform legislation enacted by the State Legislature in January 1992 to: build, strengthen, and support the family unit; encourage family formation; reduce the long-term aspects of welfare dependency; look to the needs of the family unit as a whole; emphasize education and training for all family members; maximize use of educational, training and employment resources; and develop genuine private sector job opportunities.

SNAPSHOT OF ACTIVITY AT POINT IN TIME - Status of activities as of the end of the month:

Total Non-Exempt JOBS/FDP Recipients - Calculation of the number of mandatory IV-F individuals (FAMIS report # FB304).

Employment Directed Activities (EDA) - From Activities Summary Report (OMEGA report # RM064). Unduplicated count of persons participating in **Training, Education, or Job Search**.

Participants in EDA, Receiving Support Services - From Issuance Disbursement Summary (OMEGA report # RM703). Total number of active participants who show receipt of **Training Related Expenses** or **Child Care**.

Participation Rate (JOBS/FDP) - Federally mandated calculation method, dividing the number of participants whose combined and averaged weekly hours of participation in qualifying activities equals or exceeds 20 hours per week by the total number of non-exempt IV-F recipients. As of the end of the month.

ACTIVITY FOR THE MONTH - Number of participants with the indicated activity during the month:

Participants with First Case Management Interview - From Activities Summary Report (OMEGA report # RM064).

Number of Persons Employed This Month, Still Receiving AFDC - From Activities Summary Report (OMEGA report # RM064).

Number of Persons Closed on FAMIS Due to Earnings - From FAMIS report # FM463.

Post AFDC and Receiving Child Care - Persons no longer in receipt of AFDC, but still receiving child care. From Issuance Disbursement Summary (OMEGA report # RM703).

New Jersey Department of Human Services
Division of Family Development

TABLE 11
GENERAL ASSISTANCE Program
EMPLOYABLE AND UNEMPLOYABLE RECIPIENTS
AND EMERGENCY ASSISTANCE PAYMENTS,
COUNTIES AND 21 LARGEST MUNICIPALITIES
October 1996

County/Municipality	Total Persons Aided			Emergency Assistance Payments		
	Employable	Unemployable	Total	Temporary Rental Assist.	Other GA-EA	Total

ATLANTIC	824	547	1,371	65	26	91
BERGEN	435	410	845	222	47	269
BURLINGTON	370	362	732	141	115	256
CAMDEN	1,863	1,007	2,870	245	278	523
CAPE MAY	96	86	182	11	2	13
CUMBERLAND	297	159	456	11	10	21
ESSEX	6,749	2,155	8,904	770	1,374	2,144
GLOUCESTER	142	157	299	19	8	27
HUDSON	946	1,216	2,162	167	28	195
HUNTERDON	41	56	97	18	23	41
MERCER	1,631	861	2,492	316	217	533
MIDDLESEX	442	538	980	86	33	119
MONMOUTH	562	617	1,179	246	86	332
MORRIS	99	179	278	34	31	65
OCEAN	589	387	976	327	133	460
PASSAIC	2,304	684	2,988	466	160	626
SALEM	123	52	175	11	22	33
SOMERSET	81	99	180	30	5	35
SUSSEX	34	54	88	30	8	38
UNION	1,637	827	2,464	656	118	774
WARREN	45	61	106	23	4	27
TOTAL NJ	19,310	10,514	29,824	3,894	2,728	6,622

Atlantic City	677	299	976	48	24	72
Mount Holly	112	85	197	46	70	116
Camden	1,601	668	2,269	167	235	402
Vineland	148	90	238	7	6	13
East Orange	443	375	818	214	28	242
Irvington	275	113	388	48	12	60
Montclair	115	75	190	26	14	40
Newark	5,430	1,358	6,788	402	1,309	1,711
Orange	363	84	447	52	0	52
Bayonne	122	61	183	5	0	5
Hoboken	129	93	222	15	0	15
Jersey City	516	531	1,047	79	13	92
Trenton	1,533	767	2,300	283	210	493
Perth Amboy	116	108	224	14	4	18
Asbury Park	155	109	264	80	1	81
Long Branch	152	108	260	53	35	88
Lakewood	304	120	424	185	36	221
Passaic	598	277	875	231	36	267
Paterson	1,621	283	1,904	185	112	297
Elizabeth	1,069	427	1,496	492	72	564
Plainfield	233	138	371	37	1	38
Total	15,712	6,169	21,881	2,669	2,218	4,887

New Jersey Department of Human Services
Division of Family Development

TABLE 12
CHILD SUPPORT AND PATERNITY
NUMBER OF CASES REMAINING OPEN, QUARTER ENDING DECEMBER 1996

	<u>CASES WITH ORDERS</u>			<u>OTHER CASES (1)</u>		<u>TOTAL</u>	<u>TOTAL</u>	<u>TOTAL</u>
	AFDC AND FOSTER CARE	AFDC AND FOSTER CARE ARREARS (2)	NON-AFDC	AFDC AND FOSTER CARE	NON-AFDC	AFDC AND FOSTER CARE	NON-AFDC	ALL CASES
Atlantic	2,340	4,293	9,906	3,259	4,543	9,892	14,449	24,341
Bergen	1,522	1,822	8,690	1,455	1,227	4,799	9,917	14,716
Burlington	1,898	2,940	10,379	2,013	2,540	6,851	12,919	19,770
Camden	9,189	10,030	22,352	9,288	7,605	28,507	29,957	58,464
Cape May	719	1,034	3,395	520	325	2,273	3,720	5,993
Cumberland	3,675	4,707	10,514	715	566	9,097	11,080	20,177
Essex	16,092	16,051	37,154	23,446	14,813	55,589	51,967	107,556
Gloucester	1,714	2,236	6,358	1,191	1,371	5,141	7,729	12,870
Hudson	7,837	7,294	19,120	11,267	8,414	26,398	27,534	53,932
Hunterdon	142	264	1,607	81	114	487	1,721	2,208
Mercer	4,307	5,391	12,634	3,929	3,817	13,627	16,451	30,078
Middlesex	3,156	4,653	14,862	3,526	3,399	11,335	18,261	29,596
Monmouth	3,458	4,721	13,017	2,276	2,371	10,455	15,388	25,843
Morris	388	489	3,641	645	733	1,522	4,374	5,896
Ocean	1,780	2,915	9,407	2,112	2,613	6,807	12,020	18,827
Passaic	5,201	5,690	15,827	5,883	5,760	16,774	21,587	38,361
Salem	1,017	1,398	3,376	306	254	2,721	3,630	6,351
Somerset	519	612	3,212	639	859	1,770	4,071	5,841
Sussex	248	515	2,170	225	239	988	2,409	3,397
Union	3,615	4,387	12,852	4,757	3,836	12,759	16,688	29,447
Warren	537	976	2,843	190	171	1,703	3,014	4,717
NJ TOTAL	69,354	82,418	223,316	77,723	65,570	229,495	288,886	518,381

Data Sources: Automated Child Support Enforcement System #CS199-3

(1) - Needing location, paternity, or other services to establish an obligation

(2) - Cases with arrears *only*