

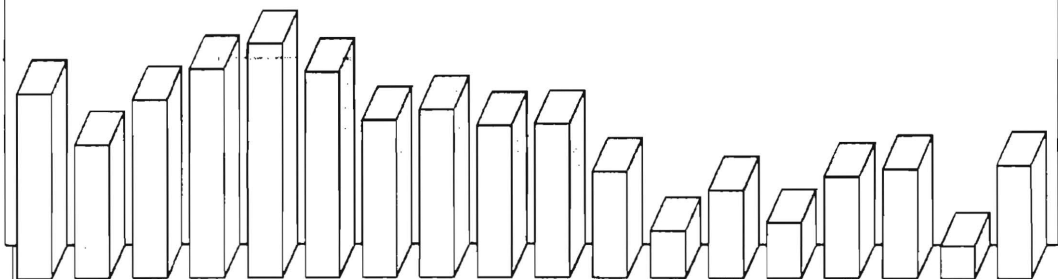
974.905
B44.4
c. 2

*State of New Jersey
Department of Human Services
Division of Family Development*

CURRENT PROGRAM STATISTICS

April 1995

Karen Highsmith, Acting Director



State of New Jersey
Department of Human Services
Division of Family Development

CURRENT PROGRAM STATISTICS
April 1995

TABLE OF CONTENTS

	Page
Highlights of Current Program Statistics	1-3
 Statistics by County, April 1995	
Table 1 AFDC.....	4
Graph 1 Current AFDC Families	5
Table 2 Food Stamp Program.....	6
Graph 2 Current Food Stamp Households/Persons	7
Table 3 Emergency Assistance Program	8
Graph 3 Current Families Receiving Emergency Assistance.....	9
Table 4 Family Development Program	10
 State Summary, 1993 - 1995	
Table 5 AFDC, April 1993 - April 1995	11
Graph 4 Families Receiving AFDC, 4/93-4/95	12
Table 6 Food Stamp Program, April 1993 - April 1995	13
Graph 5 Food Stamp Households, 4/93-4/95	14
Graph 6 Food Stamp Recipients, 4/93-4/95	15
Table 7 Emergency Assistance Program, April 1993 - April 1995.....	16
Graph 7 AFDC Families Receiving Emergency Assistance 4/93-4/95	17
Table 8 JOBS/FDP Participation Rates, by County and Statewide, October 1993 - April 1995.....	18
Graph 8 JOBS/FDP Participation Rates, 10/93-4/95	19
Table 9 General Assistance, January 1993 -November 1994.....	20
Graph 9 General Assistance Recipients 1/93 - 11/94	21
Table 10 Child Support and Paternity 1993-1995	22
Explanatory Notes	23-24
 Supplement	
Table 11 General Assistance Recipients by County and Municipality, November 1994	25
(Table to be issued as available)	

Highlights of Current Program Statistics

AFDC (Tables 1 and 5, Graphs 1 and 4)

121,303 eligible families in New Jersey were receiving AFDC as of the end of April 1995.

108,800 were single head of household families (Regular AFDC, C segment).

Among two-parent families, Unemployed Parents (F Segment) accounted for 3900, and State AFDC (N Segment) for almost 3400. There were more than 5200 Medicaid Only families.

By county, the largest numbers were in Essex with more than 30,300 families, Hudson with 19,000, and Camden County with 13,700. They accounted for 52 percent of all AFDC families.

The other counties ranged from 213 families in Hunterdon to 7,800 in Passaic County.

The number of eligible families in April 1995 is 200 higher than March, the first increase after nine months of decline since the June 1994 peak of over 124,600.

Regular AFDC (C segment) was practically unchanged from March to April 1995. From the peak of nearly 111,800 in June 1994, it declined by about 3000 through April 1995.

F segment families declined from over 4500 in May 1994 to less than 3800 by December 1994. The number was stable, around 3900, in the first four months of 1995.

State AFDC (N segment) grew steadily from 2850 families in April 1993 to 3483 by May 1994 (more than one fifth higher), but has remained almost unchanged since.

Medicaid Only families remained near 5000 over the last two years, but increased by about 400 from 4,834 in April 1994 to 5,209 by April 1995.

FOOD STAMP PROGRAM (Tables 2 and 6, Graphs 2, 5, and 6)

At the end of April 1995, 222,579 households were participating in the Food Stamp Program.

About 113,600 were AFDC households and 109,000 were Other Low Income households.

48 percent of all Food Stamp Households are in Essex (55,067), Hudson (29,376) and Camden (21,987) Counties.

These households included about 524,100 persons, 247,400 adults and 276,700 children.

In seven counties (Bergen, Hunterdon, Monmouth, Morris, Somerset, Sussex, and Warren) the number of adults exceeds the number of children in Food Stamp households.

Food Stamp households in New Jersey remained close to 215,000 families between April 1993 and February 1994, jumped to over 220,000 families in April 1994, and remained above that amount every month since. The April 1995 level was about 2000 below March 1995, and about the same as February.

The convergence of the numbers of AFDC(FS) households and Other Low Income households continues. There were about the same number of AFDC(FS) households in April 1995 as there were in April 1993, around 113,500. The average number of Other Low Income households was 100,000 for all of 1993, and nearly 109,000 for the first four months of 1995.

The decline of 5000 Total Recipients between March and April of 1995 was the greatest single month decline in two years, and totally cancelled out the increase from February to March 1995. The average for the first four months of 1995, 525,000, is about the same as the 1994 average, and 9,000 higher than the 1993 average.

Recipient Adults increased much more than Recipient Children, averaging under 239,000 for 1993 and more than 247,000 for the first four months of 1995. Recipient Children averaged 277,000 in 1993, increased to 279,000 in 1994, and returned to 277,000 for the first four months of 1995.

EMERGENCY ASSISTANCE (Tables 3 and 7, Graphs 3 and 7)

At the end of April 1995, 6840 eligible AFDC families were receiving Emergency Assistance (EA) in New Jersey.

3488 families were receiving Temporary Rental Assistance (TRA).

There were 540 motel placements and 411 emergency shelter placements.

All other AFDC-EA accounted for 2401 families, including either one-time benefits such as back rent, back utilities, security deposits, furnishings, and clothing and food allowance, or shared or transitional housing.

2385 families in Essex County received EA, including 1910 provided TRA. Mercer had 728 EA recipient families, Middlesex had 664, and Passaic had 651 (mostly "Other EA"). All other counties had between 12 and 422 EA recipient families with eight under 100 .

AFDC families receiving Emergency Assistance reached almost 8500 in May 1993, and have generally continued declining, with some fluctuations due to short-term changes in "Other AFDC-EA." The average for 1993 was almost 7900, under 7300 for 1994, and about 6700 for the first four months of 1995.

The decline in the number of families receiving Temporary Rental Assistance accounted for much of the decline in EA. At almost 4900 in May 1993, families receiving TRA declined to less than 3500 by April 1995, the lowest level in the period.

Motel placements were around 700 during most of 1993, and around 600 in late 1993 and the first half of 1994. From a peak of 749 in August 1994, motel placements dropped to only 540 by April 1995, also the lowest in the period.

Emergency shelter placements peaked at 573 in October 1993, and remained under 500 since, with some months around 400.

All Other AFDC-EA fluctuated between a high of 2498 in May 1993 and a low of 1713 in December 1994. There was little change between March and April 1995.

JOBS/FDP PARTICIPATION RATES (Table 8, Graph 8)

Statewide participation in JOBS/FDP reached a new high in April 1995 at 24.5 percent, increasing 0.7 percent over March. The early 1995 pattern was similar to early 1994, with a drop of about 1 percent from December to January, little change from January to February and substantial increases through April. An upward shift can be seen in the statewide rate in the last 18 months.

Most counties have shown gradual upward movement, though participation rates vary widely and some fluctuate markedly. Several experienced declines in Winter 1993/1994, moved up in March 1994, declined from May through August 1994, then turned upward in September and October 1994. Rates remained fairly stable through December 1994, and declined in January 1995. Most have increased strongly from January through April.

Essex county's rate exceeded 10 percent for the first time in March 1995, and increased again into April. Only Cape May remains below 10 percent. In many counties rates have been between 10 and 30 percent. Atlantic, Cumberland, Salem, Somerset, Sussex and Warren are approaching or exceeding 50 percent, while Passaic has exceeded 30 percent since October 1994.

GENERAL ASSISTANCE (Table 9, Graph 9)

For the period January 1993 through November 1994 (the latest available information), the number of GA recipients peaked at about 37,400 in March 1993 and at 38,100 in March 1994. The number declined to 33,400 in November 1994.

During the same period, the number of employable recipients also peaked in March 1993 (25,900) and March 1994 (26,400). The November 1994 level, about 21,400, was the lowest in the period.

The number of Unemployable GA recipients remained between 11,000 and 11,700 from January 1993 through April 1994, and hovered around 12,000 since May 1994.

CHILD SUPPORT AND PATERNITY (Table 10)

Total collections of the Child Support and Paternity Program grew from about \$438 million to more than \$510 million from FY1993 to FY1994, an increase of 16.6 percent. Total AFDC/Foster Care collections remained almost unchanged at around \$92 million. Non-AFDC collections grew from less than \$346 million to almost \$418 million, or 21 percent.

For the nine months ended March 1995 (three quarters of FY1995), AFDC/Foster Care Collections were up by one percent from a year earlier, led by a 1.7 million dollar increase in income withholdings and about 1.5 million in collections for other states. Non-AFDC collections were up 14 percent, or about \$44 million more. Most of the increase was in Income Withholding, Other/Own Behalf, and For Other States.

New Jersey Department
of Human Services
Division of Family Development

TABLE 1
AFDC Program

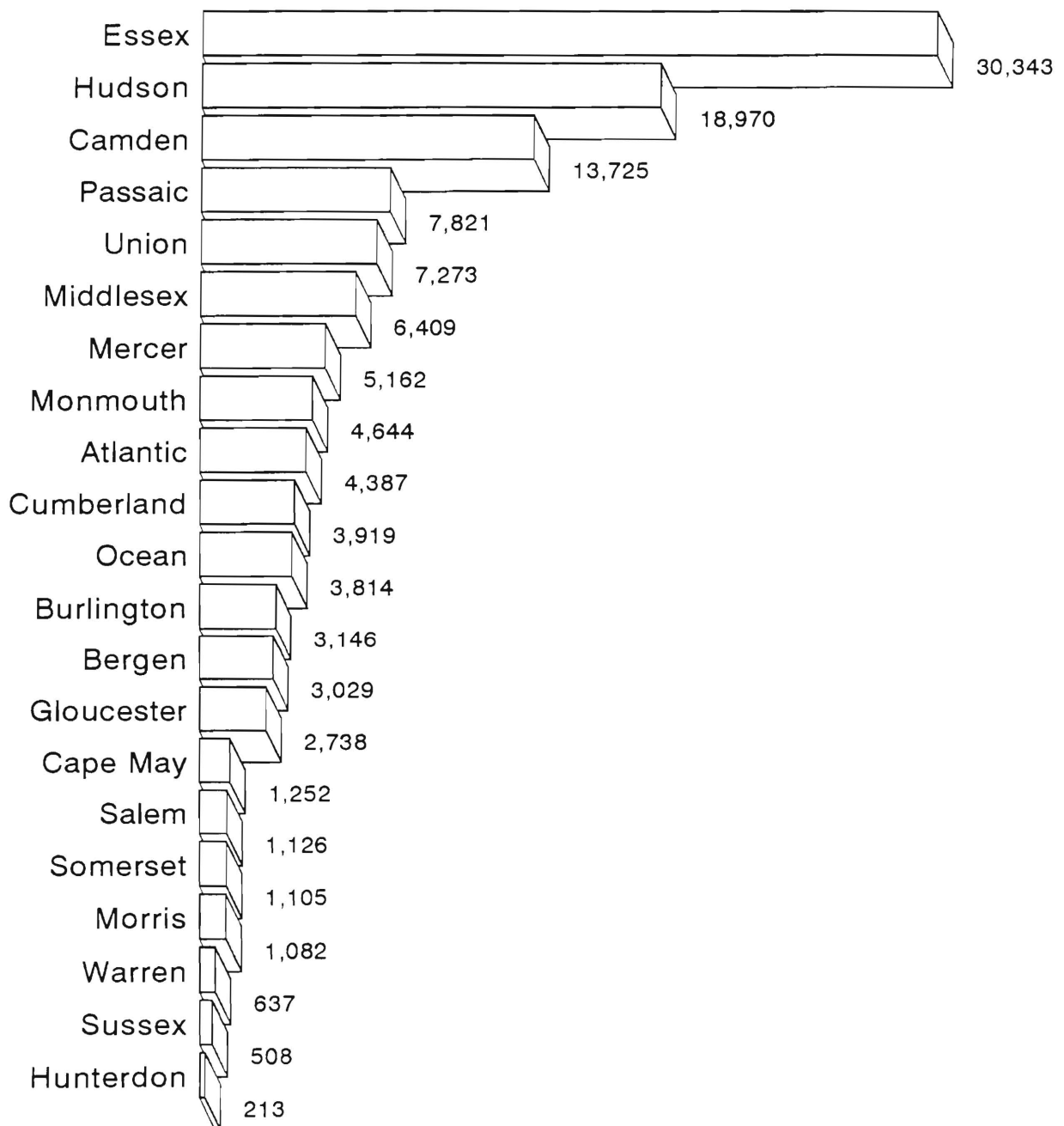
NUMBER OF APPLICATIONS AND TERMINATIONS DURING REPORT MONTH,
AND NUMBER OF ELIGIBLE FAMILIES RECEIVING AFDC AT END OF REPORT
MONTH

April 1995

County	Applications Approved	Terminations	Regular AFDC (C Segment)	Unemployed Parents (F)	State AFDC (N)	Medicaid Only	TOTAL AFDC
Atlantic	382	371	3,993	169	86	139	4,387
Bergen	175	179	2,645	184	123	77	3,029
Burlington	267	292	2,727	104	91	224	3,146
Camden	926	907	11,946	632	371	776	13,725
Cape May	107	112	1,009	92	83	68	1,252
Cumberland	286	312	3,303	195	197	224	3,919
Essex	1,088	1,084	28,807	549	262	725	30,343
Gloucester	269	233	2,325	143	100	170	2,738
Hudson	625	718	17,028	378	614	950	18,970
Hunterdon	28	29	177	9	12	15	213
Mercer	471	494	4,680	99	103	280	5,162
Middlesex	488	478	5,303	265	312	529	6,409
Monmouth	321	272	4,281	109	182	72	4,644
Morris	88	71	945	54	35	48	1,082
Ocean	243	241	3,184	225	187	218	3,814
Passaic	459	442	7,137	348	272	64	7,821
Salem	133	101	986	27	35	78	1,126
Somerset	127	148	883	56	36	130	1,105
Sussex	63	41	391	39	16	62	508
Union	488	503	6,548	191	219	315	7,273
Warren	62	58	524	39	29	45	637
<hr/>							
NJ TOTAL	7,096	7,086	108,822	3,907	3,365	5,209	121,303

Data Sources: Data is derived from NJ Division of Family Development's FAMIS report # FF-012.

Current AFDC Families April 1995, By County



New Jersey Department of Human Services
Division of Family Development

TABLE 2
FOOD STAMP Program

- NUMBER OF ATP'S ISSUED TO HOUSEHOLDS,
PERSONS, ADULTS AND CHILDREN AT THE END OF THE REPORT MONTH

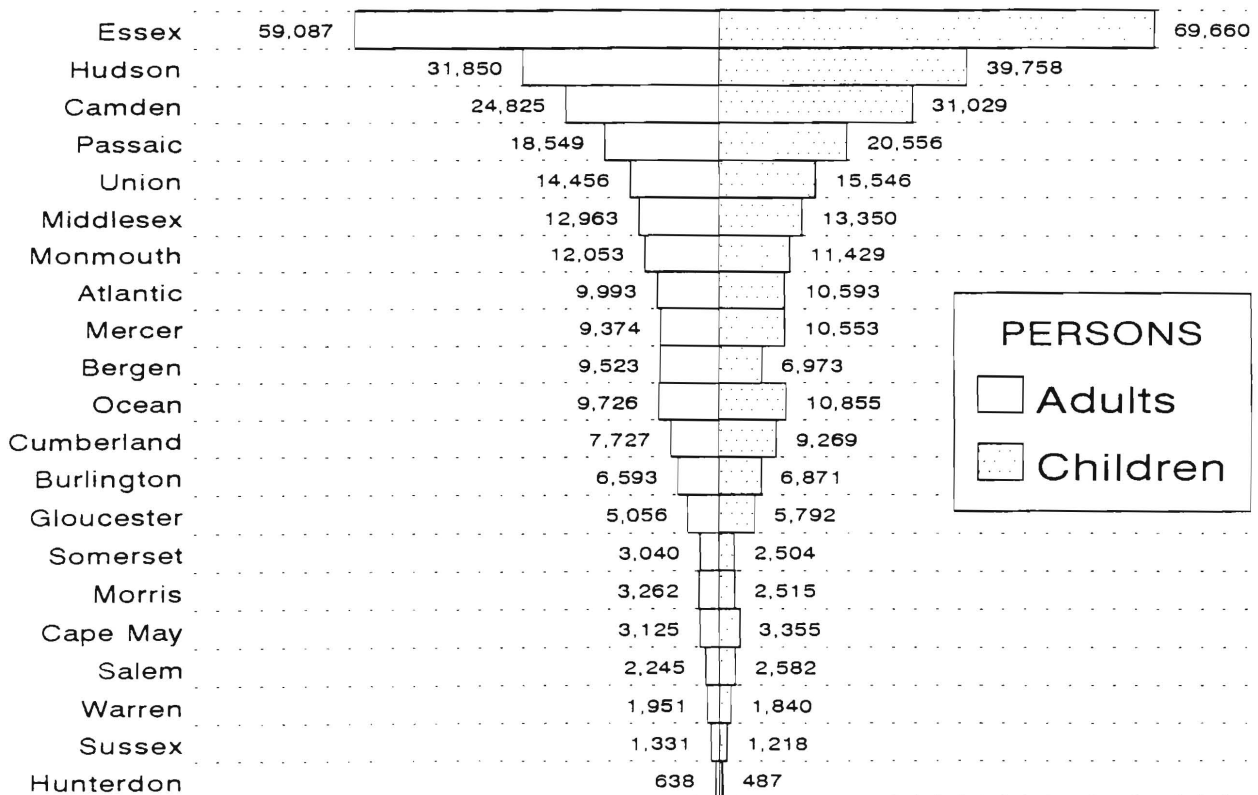
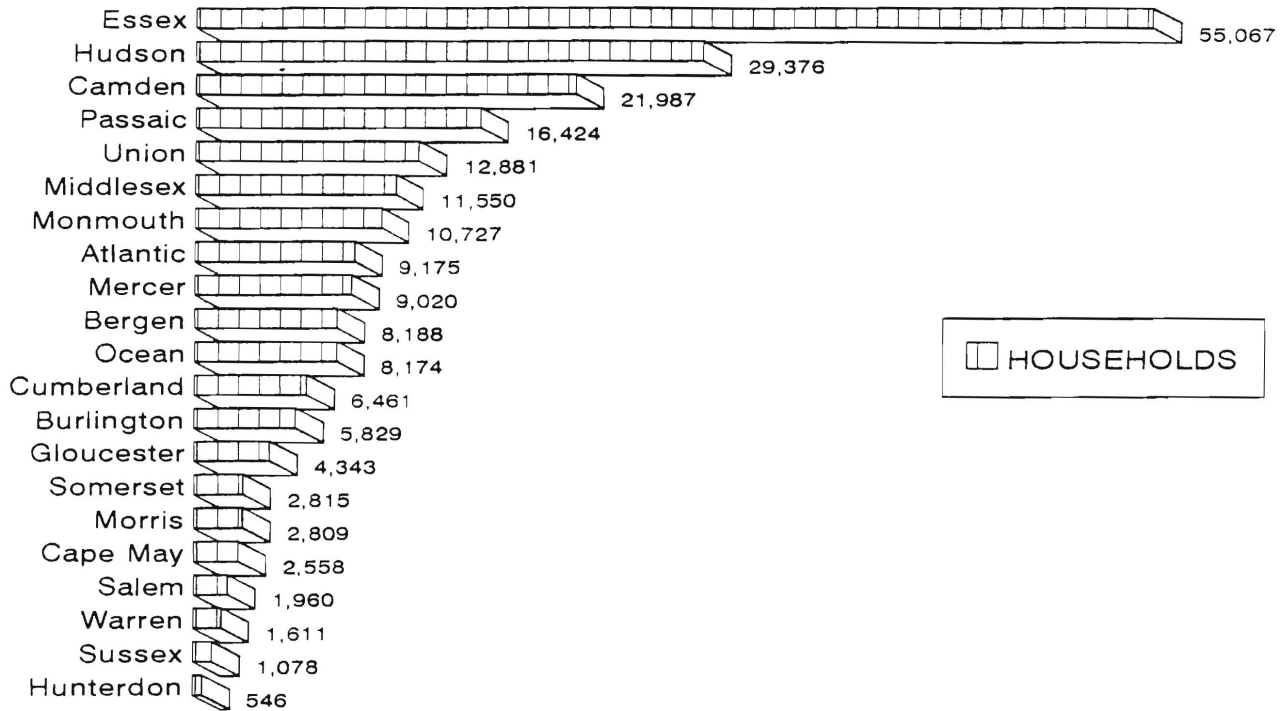
April 1995

County	HOUSEHOLDS			PERSONS				
	AFDC	Other low income	TOTAL	TOTAL	AFDC	Other low income	Adults	Children
Atlantic	4,307	4,868	9,175	20,586	13,753	6,833	9,993	10,593
Bergen	2,752	5,436	8,188	16,496	8,171	8,325	9,523	6,973
Burlington	2,757	3,072	5,829	13,464	8,391	5,073	6,593	6,871
Camden	13,108	8,879	21,987	55,854	42,890	12,964	24,825	31,029
Cape May	1,198	1,360	2,558	6,480	4,077	2,403	3,125	3,355
Cumberland	3,778	2,683	6,461	16,996	12,642	4,354	7,727	9,269
Essex	29,710	25,357	55,067	128,747	92,107	36,640	59,087	69,660
Gloucester	2,413	1,930	4,343	10,848	7,579	3,269	5,056	5,792
Hudson	17,567	11,809	29,376	71,608	53,739	17,869	31,850	39,758
Hunterdon	178	368	546	1,125	558	567	638	487
Mercer	4,639	4,381	9,020	19,927	14,217	5,710	9,374	10,553
Middlesex	5,816	5,734	11,550	26,313	17,345	8,968	12,963	13,350
Monmouth	4,288	6,439	10,727	23,482	13,498	9,984	12,053	11,429
Morris	931	1,878	2,809	5,777	2,782	2,995	3,262	2,515
Ocean	3,625	4,549	8,174	20,581	11,852	8,729	9,726	10,855
Passaic	7,257	9,167	16,424	39,105	23,941	15,164	18,549	20,556
Salem	1,042	918	1,960	4,827	3,342	1,485	2,245	2,582
Somerset	1,008	1,807	2,815	5,544	2,906	2,638	3,040	2,504
Sussex	399	679	1,078	2,549	1,263	1,286	1,331	1,218
Union	6,205	6,676	12,881	30,002	19,732	10,270	14,456	15,546
Warren	610	1,001	1,611	3,791	1,932	1,859	1,951	1,840
NJ TOTAL	113,588	108,991	222,579	524,102	356,717	167,385	247,367	276,735

ATP - Authorization to Participate, may include some duplication

Data Sources: Data is derived from NJ Division of Family Development's FAMIS report # FB-160.

Food Stamp Households April 1995, By County



New Jersey Department of Human Services
Division of Family Development

TABLE 3**EMERGENCY ASSISTANCE Program for AFDC recipients**

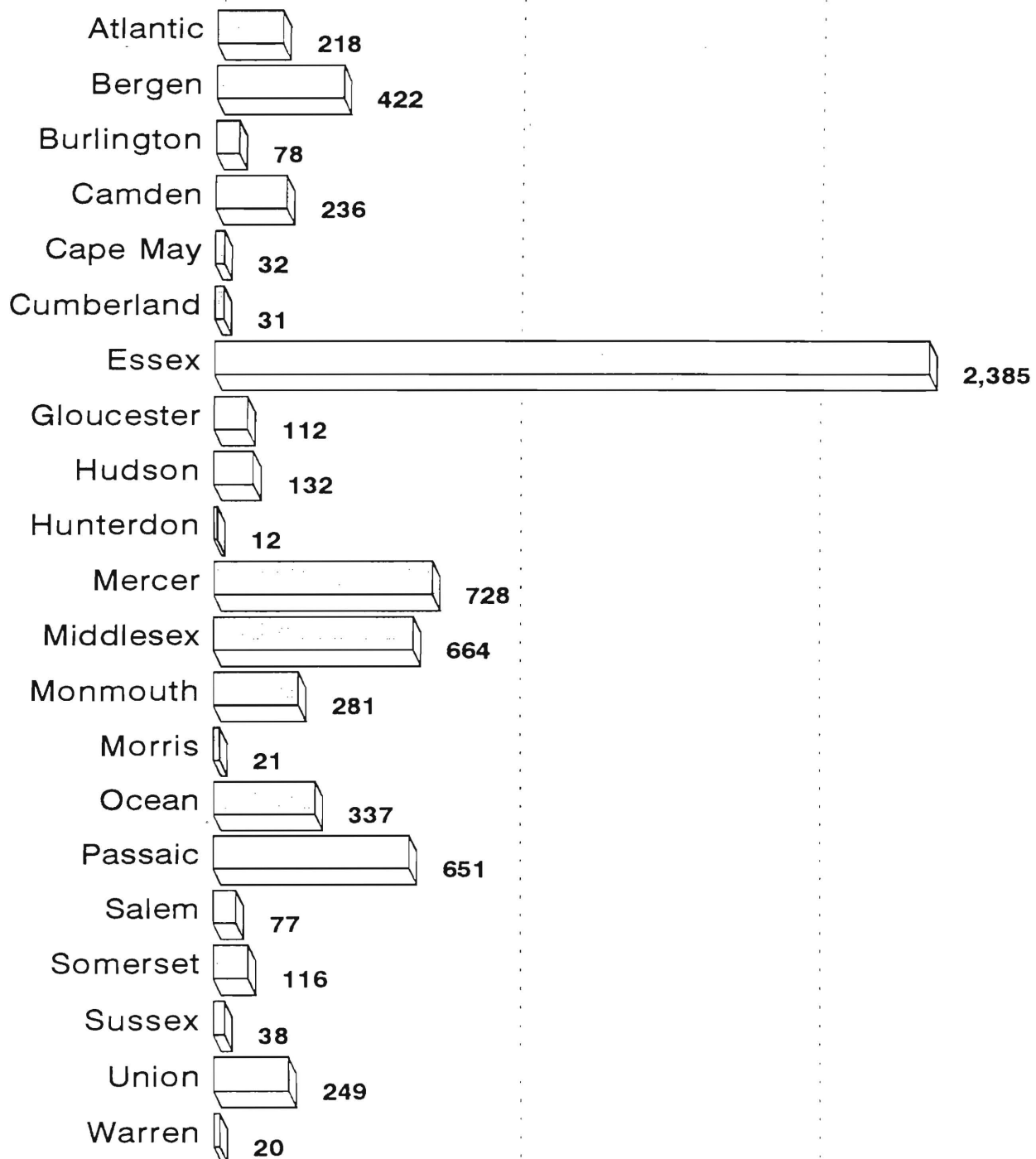
NUMBER OF APPLICATIONS AND TERMINATIONS DURING REPORT MONTH,
AND ELIGIBLE FAMILIES RECEIVING EMERGENCY ASSISTANCE
AT END OF REPORT MONTH

April 1995

County	Applications Approved	Terminations	Total families receiving EA	Temporary rental assist.	Motel Housing	Emergency Shelter	Other AFDC-EA
Atlantic	201	177	218	86	30	35	67
Bergen	58	65	422	332	37	21	32
Burlington	42	8	78	18	1	43	16
Camden	183	210	236	62	4	29	141
Cape May	23	24	32	7	5	1	19
Cumberland	30	20	31	2	3	13	13
Essex	533	35	2,385	1,910	90	89	296
Gloucester	20	21	112	65	6	34	7
Hudson	49	37	132	46	6	17	63
Hunterdon	3	4	12	9	1	1	1
Mercer	78	106	728	124	48	0	556
Middlesex	72	164	664	394	25	23	222
Monmouth	45	73	281	135	56	2	88
Morris	11	7	21	0	3	10	8
Ocean	84	118	337	193	143	1	0
Passaic	576	645	651	7	20	20	604
Salem	36	19	77	28	21	0	28
Somerset	45	33	116	25	6	31	54
Sussex	9	9	38	7	16	9	6
Union	305	254	249	38	9	27	175
Warren	9	17	20	0	10	5	5
NJ TOTAL	2,412	2,046	6,840	3,488	540	411	2,401

Data Sources: Data is compiled by County Welfare Agencies & reported to the
NJ Division of Family Development on report form # PA-217.

Current Families Receiving Emergency Assistance April 1995, By County



NEW JERSEY DEPARTMENT OF HUMAN SERVICES
DIVISION OF FAMILY DEVELOPMENT

TABLE 4
FAMILY DEVELOPMENT PROGRAM
STATISTICAL SUMMARY

COUNTY	SNAPSHOT OF ACTIVITY AS OF APRIL 1995				ACTIVITY FOR MONTH OF APRIL 1995					
	TOTAL NONEXMT JOBS/FDP RECI- PIENTS	EMPLOYMENT DIRECTED ACTIVITIES(1)			PARTIC IN EDA# & REC SUP SERV		PARTIC W/ 1st	# EMPL THIS MONTH &	# CLSD ON FAMIS RE: EARNGS(2)	POST AFDC & REC CH CARE
		TRAIN- ING	EDUCA- TION	JOB SEARCH	TRE#	CHILD CARE	C M INTV	REC AFDC		
ATLANTIC	1,923	442	334	58	397	273	189	49	74	115
BERGEN	1,698	207	147	78	167	121	50	4	39	71
BURLINGTON	1,457	270	170	38	341	169	95	27	48	101
CAMDEN	8,162	319	673	46	975	625	116	34	123	204
CAPE MAY	871	28	45	13	60	11	44	11	15	3
CUMBERLAND	1,754	319	339	43	658	326	265	40	61	135
ESSEX	16,319	785	915	162	1,436	738	302	17	238	107
GLOUCESTER	1,132	249	167	22	393	126	98	7	31	69
HUDSON	11,991	888	1,591	67	1,916	971	329	46	144	208
HUNTERDON	115	8	20	7	9	10	3	5	4	8
MERCER	2,879	229	338	85	267	233	95	21	69	111
MIDDLESEX	3,456	299	215	34	287	138	231	20	54	101
MONMOUTH	2,495	269	271	57	464	340	81	27	61	151
MORRIS	499	75	42	6	33	30	9	0	16	20
OCEAN	2,133	259	217	144	204	122	163	30	51	8
PASSAIC	3,856	631	460	70	884	325	235	28	86	135
SALEM	492	85	108	6	128	84	36	8	9	52
SOMERSET	509	63	124	14	102	80	30	19	17	44
SUSSEX	276	25	61	43	47	34	16	3	19	18
UNION	3,858	374	378	99	632	283	150	16	50	96
WARREN	386	21	70	34	23	19	3	7	12	16
STATE	66,261	5,845	6,685	1,126	9,423	5,058	2,540	419	1,221	1,773

(1) – The number of participants receiving support services may occasionally exceed the number actively participating in EDAs. This can result from extended assessment or evaluation activities or, the issuance of bridge payments.

(2) – FAMIS file date 4/21/95

New Jersey Department of Human Services
Division of Family Development

TABLE 5
AFDC Program State Summary

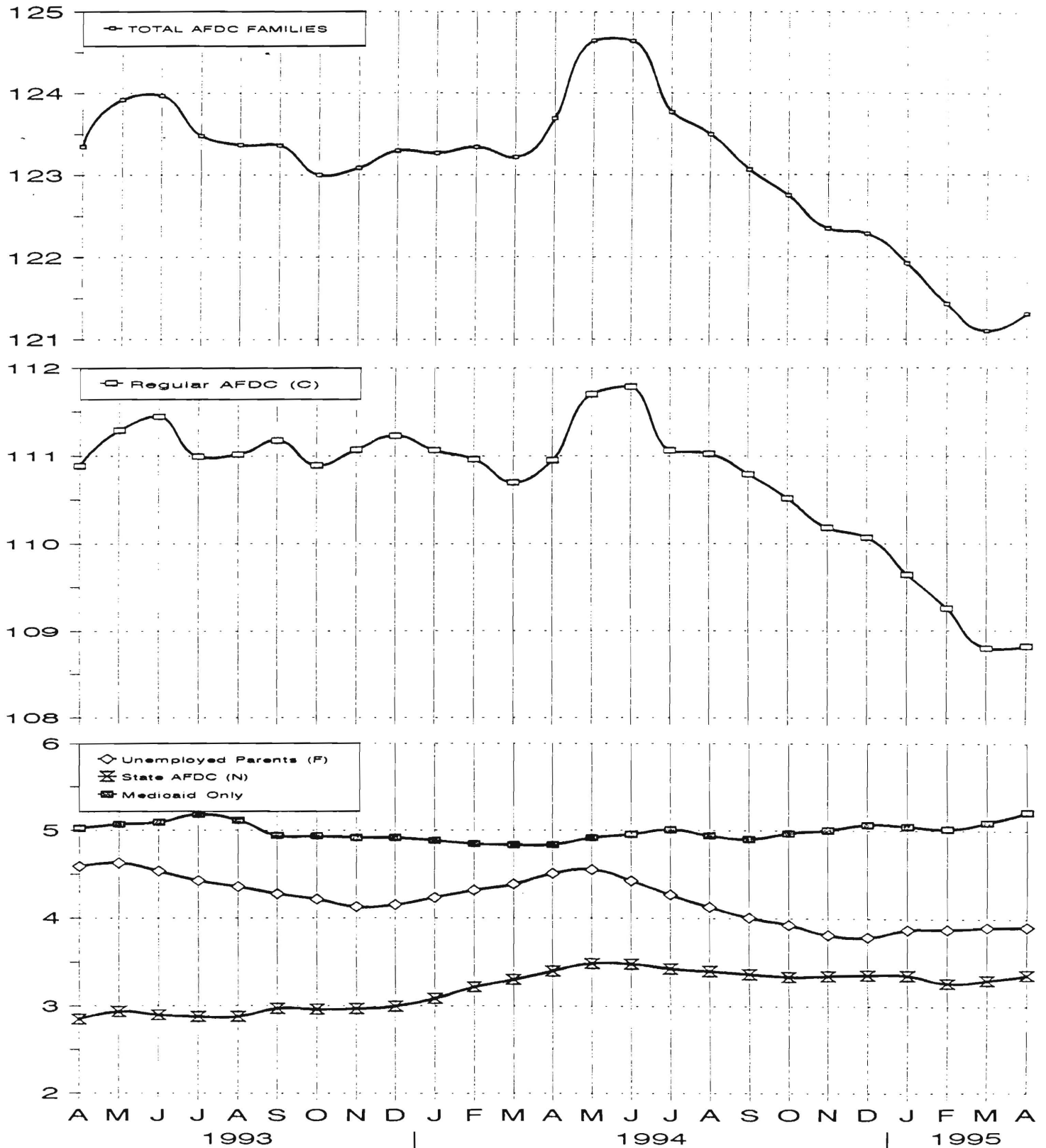
NUMBER OF APPLICATIONS AND TERMINATIONS DURING REPORT MONTH,
AND NUMBER OF ELIGIBLE FAMILIES RECEIVING AFDC AT END OF REPORT MONTH

April 1993 through April 1995

		Applications Approved	Termin- ations	Regular AFDC (C Segment)	Unemployed Parents (F)	State AFDC (N)	Medicaid Only	TOTAL AFDC
1993	Apr	5,680	5,467	110,888	4,587	2,850	5,021	123,346
	May	6,532	5,947	111,290	4,626	2,935	5,068	123,919
	Jun	5,360	5,330	111,445	4,533	2,898	5,091	123,967
	Jul	5,292	5,771	110,996	4,424	2,880	5,179	123,479
	Aug	6,103	6,235	111,020	4,355	2,879	5,111	123,365
	Sep	5,795	5,857	111,177	4,274	2,969	4,939	123,359
	Oct	5,380	5,820	110,893	4,213	2,961	4,934	123,001
	Nov	6,774	6,902	111,072	4,131	2,969	4,916	123,088
	Dec	5,590	5,462	111,231	4,152	2,997	4,915	123,295
	AVERAGE (12 MONTHS)	5,760	5,688	110,942	4,365	2,860	5,012	123,178
1994	Jan	5,452	5,349	111,067	4,232	3,085	4,881	123,265
	Feb	5,449	5,518	110,964	4,314	3,214	4,844	123,336
	Mar	5,693	5,893	110,699	4,383	3,301	4,831	123,214
	Apr	6,284	5,997	110,951	4,506	3,399	4,834	123,690
	May	7,094	6,188	111,700	4,549	3,483	4,913	124,645
	Jun	5,758	5,742	111,787	4,423	3,477	4,953	124,640
	Jul	5,117	5,898	111,064	4,266	3,428	5,007	123,765
	Aug	6,435	6,827	111,025	4,128	3,401	4,940	123,494
	Sep	6,266	6,754	110,790	4,007	3,369	4,900	123,066
	Oct	6,592	6,950	110,517	3,927	3,340	4,966	122,750
	Nov	6,344	6,796	110,181	3,814	3,350	5,002	122,347
	Dec	5,682	5,890	110,070	3,789	3,360	5,065	122,284
	AVERAGE	6,014	6,150	110,901	4,195	3,351	4,928	123,375
1995	Jan	5,583	5,944	109,645	3,875	3,358	5,045	121,923
	Feb	5,964	6,515	109,261	3,878	3,270	5,016	121,425
	Mar	5,810	6,221	108,800	3,903	3,305	5,088	121,096
	Apr	7,096	7,086	108,822	3,907	3,365	5,209	121,303
	AVERAGE	6,113	6,442	109,132	3,891	3,325	5,090	121,437

Eligible Families Receiving AFDC

April 1993 through April 1995
(Thousands of Families)



New Jersey Department of Human Services
Division of Family Development

TABLE 6

FOOD STAMP Program State Summary

NUMBER OF ATP'S ISSUED TO HOUSEHOLDS,
PERSONS, ADULTS AND CHILDREN AT THE END OF THE REPORT MONTH
April 1993 through April 1995

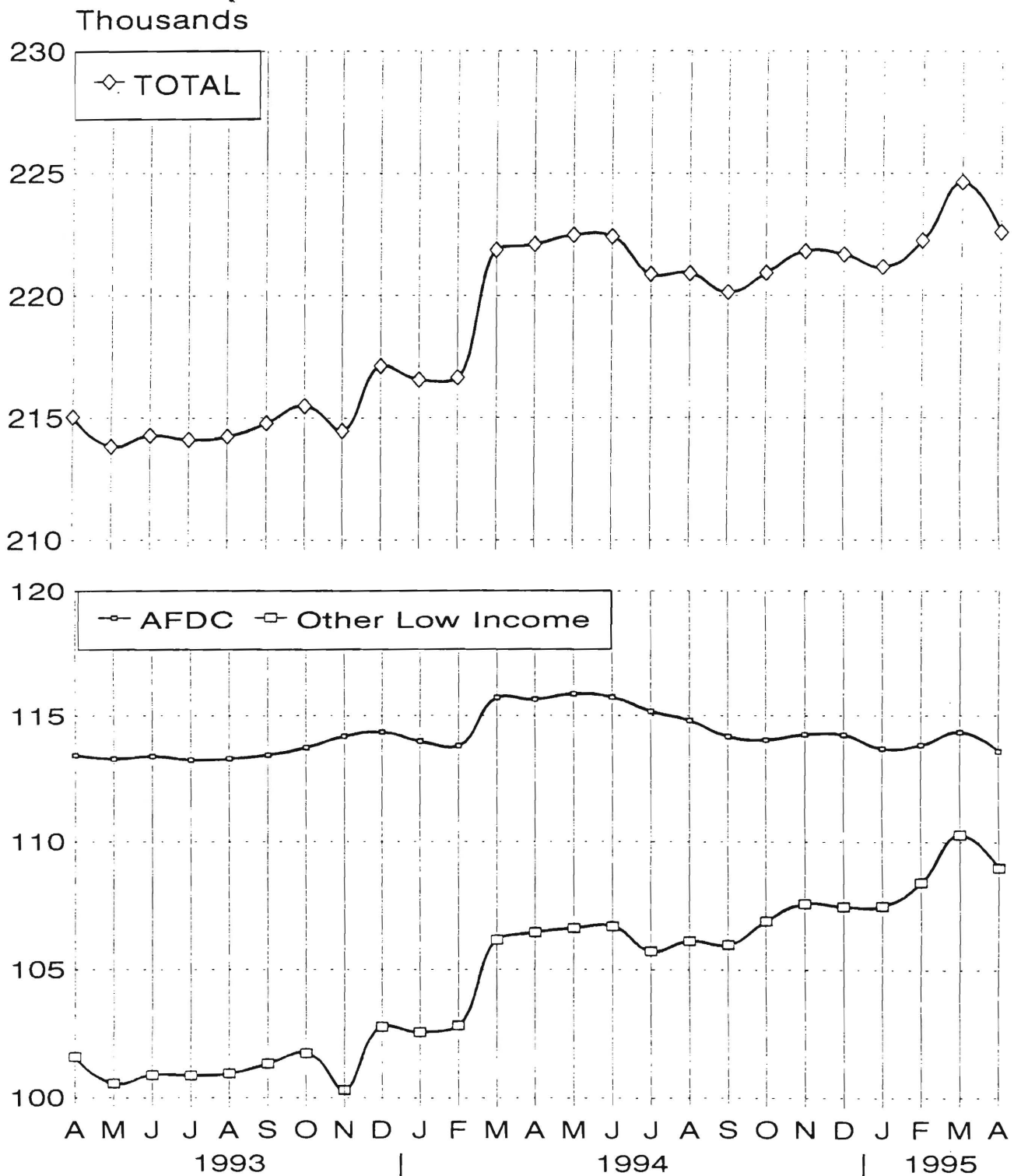
County		HOUSEHOLDS			PERSONS			
		AFDC	Other low income	TOTAL	TOTAL	AFDC	Other low income	Adults Children
1993	Apr	113,431	101,609	215,040	519,374	358,643	160,731	240,630 278,744
	May	113,282	100,555	213,837	516,825	357,958	158,867	239,134 277,691
	Jun	113,383	100,890	214,273	517,200	358,320	158,880	239,364 277,836
	Jul	113,238	100,872	214,110	516,546	357,867	158,679	238,893 277,653
	Aug	113,292	100,947	214,239	516,113	358,109	158,004	238,801 277,312
	Sep	113,439	101,341	214,780	516,517	358,261	158,256	239,247 277,270
	Oct	113,737	101,753	215,490	517,657	358,804	158,853	239,902 277,755
	Nov	114,180	100,295	214,475	519,932	360,125	159,807	241,029 278,903
	Dec	114,348	102,790	217,138	521,307	360,858	160,449	241,989 279,318
	AVERAGE (12 Months)	113,235	100,374	213,609	515,793	357,762	158,032	238,605 277,188
1994	Jan	113,984	102,590	216,574	519,549	359,422	160,127	241,575 277,974
	Feb	113,804	102,843	216,647	519,760	359,227	160,533	241,993 277,767
	Mar	115,730	106,160	221,890	530,892	365,132	165,760	248,219 282,673
	Apr	115,661	106,454	222,115	530,591	365,241	165,350	248,331 282,260
	May	115,874	106,611	222,485	530,595	364,941	165,654	248,420 282,175
	Jun	115,737	106,683	222,420	529,514	364,394	165,120	248,099 281,415
	Jul	115,172	105,717	220,889	526,075	362,520	163,555	246,142 279,933
	Aug	114,809	106,115	220,924	524,659	361,106	163,553	246,052 278,607
	Sep	114,177	105,972	220,149	521,945	358,849	163,096	244,835 277,110
	Oct	114,039	106,903	220,942	522,406	358,010	164,396	245,676 276,730
	Nov	114,251	107,577	221,828	524,090	358,582	165,508	246,659 277,431
	Dec	114,232	107,467	221,699	523,825	358,446	165,379	246,517 277,308
	AVERAGE	114,789	105,924	220,714	525,325	361,323	164,003	246,043 279,282
1995	Jan	113,691	107,493	221,184	522,125	356,763	165,362	245,837 276,288
	Feb	113,830	108,421	222,251	524,344	357,419	166,925	247,107 277,237
	Mar	114,339	110,279	224,618	529,456	359,404	170,052	249,994 279,462
	Apr	113,588	108,991	222,579	524,102	356,717	167,385	247,367 276,735
	AVERAGE	113,862	108,796	222,658	525,007	357,576	167,431	247,576 277,431

ATP - Authorization to Participate

Data Sources: Data is derived from NJ Division of Family Development's FAMIS report # FB-160.

Food Stamp Households

April 1993 through April 1995

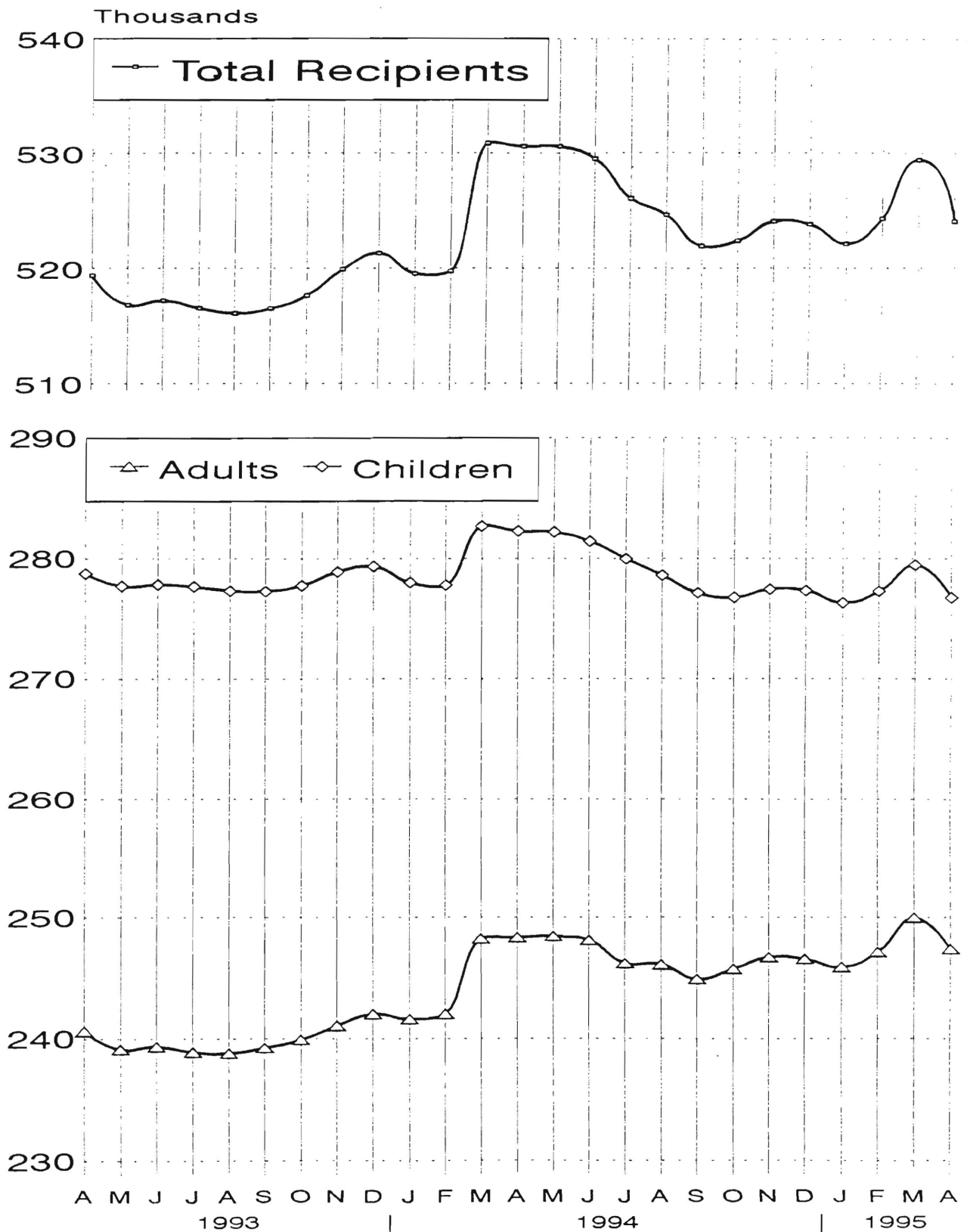


GRAPH 6

Page 15

Food Stamp Recipients

April 1993 through April 1995



New Jersey Department of Human Services
Division of Family Development

TABLE 7
EMERGENCY ASSISTANCE Program for AFDC recipients
State Summary

NUMBER OF APPLICATIONS AND TERMINATIONS DURING REPORT MONTH,
AND NUMBER OF ELIGIBLE FAMILIES RECEIVING EMERGENCY ASSISTANCE
AT END OF REPORT MONTH

April 1993 through April 1995

		Applications Approved	Terminations	Total families receiving EA	Temporary rental assist.	Motel Housing	Emergency Shelter	Other AFDC-EA
1993	Apr	3,679	2,570	8,280	4,542	704	540	2,494
	May	3,051	2,505	8,497	4,866	650	483	2,498
	Jun	3,054	2,477	8,257	4,688	644	467	2,458
	Jul	2,998	2,126	7,842	4,504	701	474	2,163
	Aug	3,388	2,212	7,929	4,372	713	524	2,320
	Sep	2,917	2,360	7,791	4,302	689	526	2,274
	Oct	3,461	2,397	7,806	4,294	681	573	2,258
	Nov	2,867	2,306	7,402	4,053	638	467	2,244
	Dec	2,431	1,810	6,903	3,974	600	457	1,872
	AVERAGE (12 MONTHS)	3,053	2,308	7,870	4,465	685	497	2,223
1994	Jan	2,456	2,022	7,252	4,239	579	422	2,012
	Feb	2,019	1,716	6,977	4,131	621	395	1,830
	Mar	3,146	1,911	7,362	4,125	640	468	2,129
	Apr	3,115	2,246	7,689	4,265	607	448	2,369
	May	3,264	2,453	7,036	4,192	637	431	1,776
	Jun	2,945	2,202	7,542	4,145	641	395	2,361
	Jul	2,756	1,866	7,647	4,302	669	419	2,257
	Aug	2,972	2,144	7,285	4,021	749	466	2,049
	Sep	3,173	2,202	7,385	3,919	685	478	2,303
	Oct	2,787	2,125	7,315	3,827	673	466	2,349
	Nov	2,667	1,865	7,013	3,826	695	434	2,058
	Dec	2,313	1,624	6,506	3,693	655	445	1,713
	AVERAGE	2,801	2,031	7,251	4,057	654	439	2,101
1995	Jan	2,419	1,883	6,526	3,607	604	457	1,858
	Feb	2,418	1,815	6,528	3,636	605	408	1,879
	Mar	2,874	2,136	7,062	3,645	570	418	2,429
	Apr	2,412	2,046	6,840	3,488	540	411	2,401
	AVERAGE	2,531	1,970	6,739	3,594	580	424	2,142

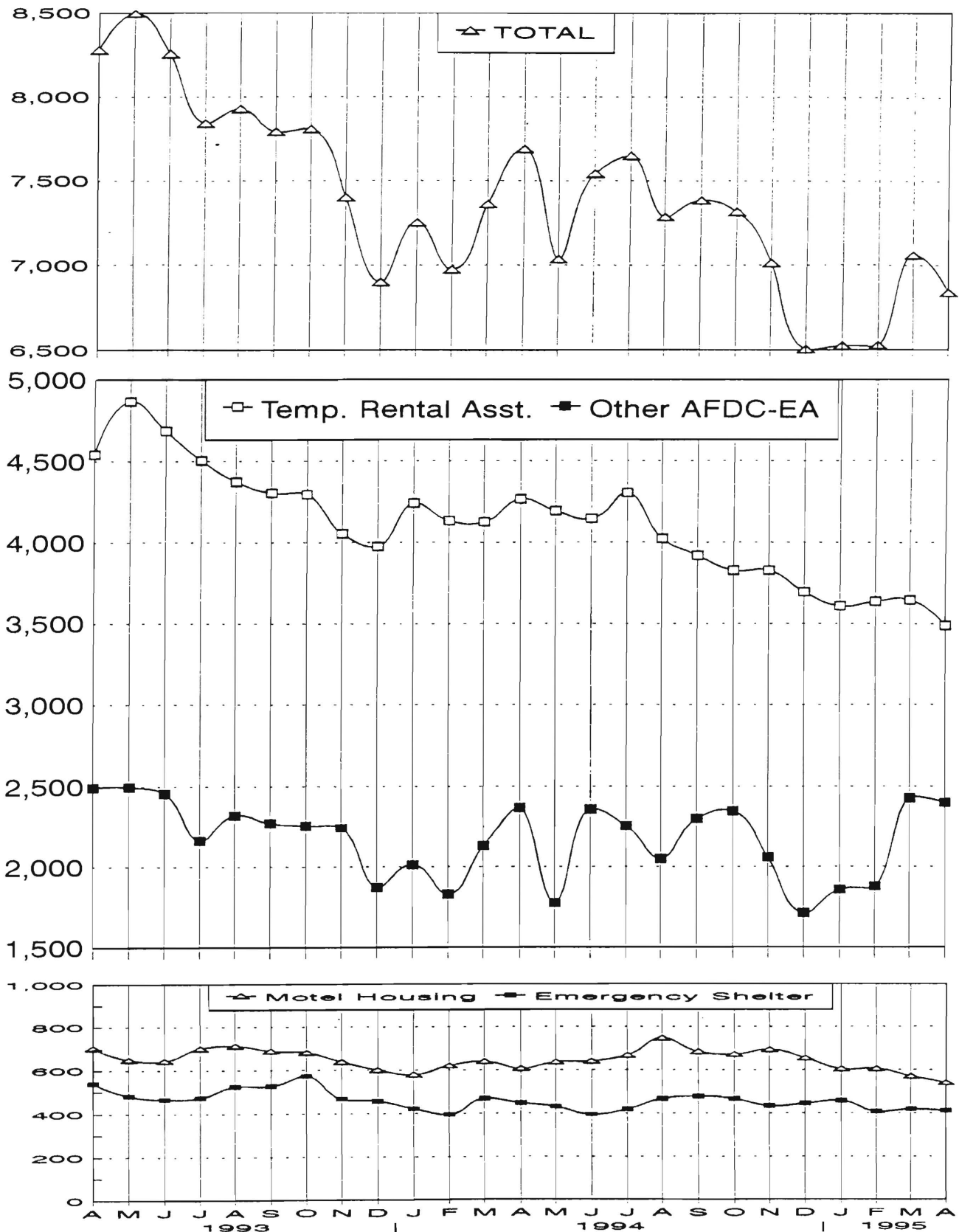
Data Sources: Data is compiled by County Welfare Agencies & reported to the NJ Division of Family Development on report form # PA-217.

GRAPH 7

Page 17

AFDC Families Receiving Emergency Assistance

April 1993 through April 1995



New Jersey Department of Human Services
Division of Family Development

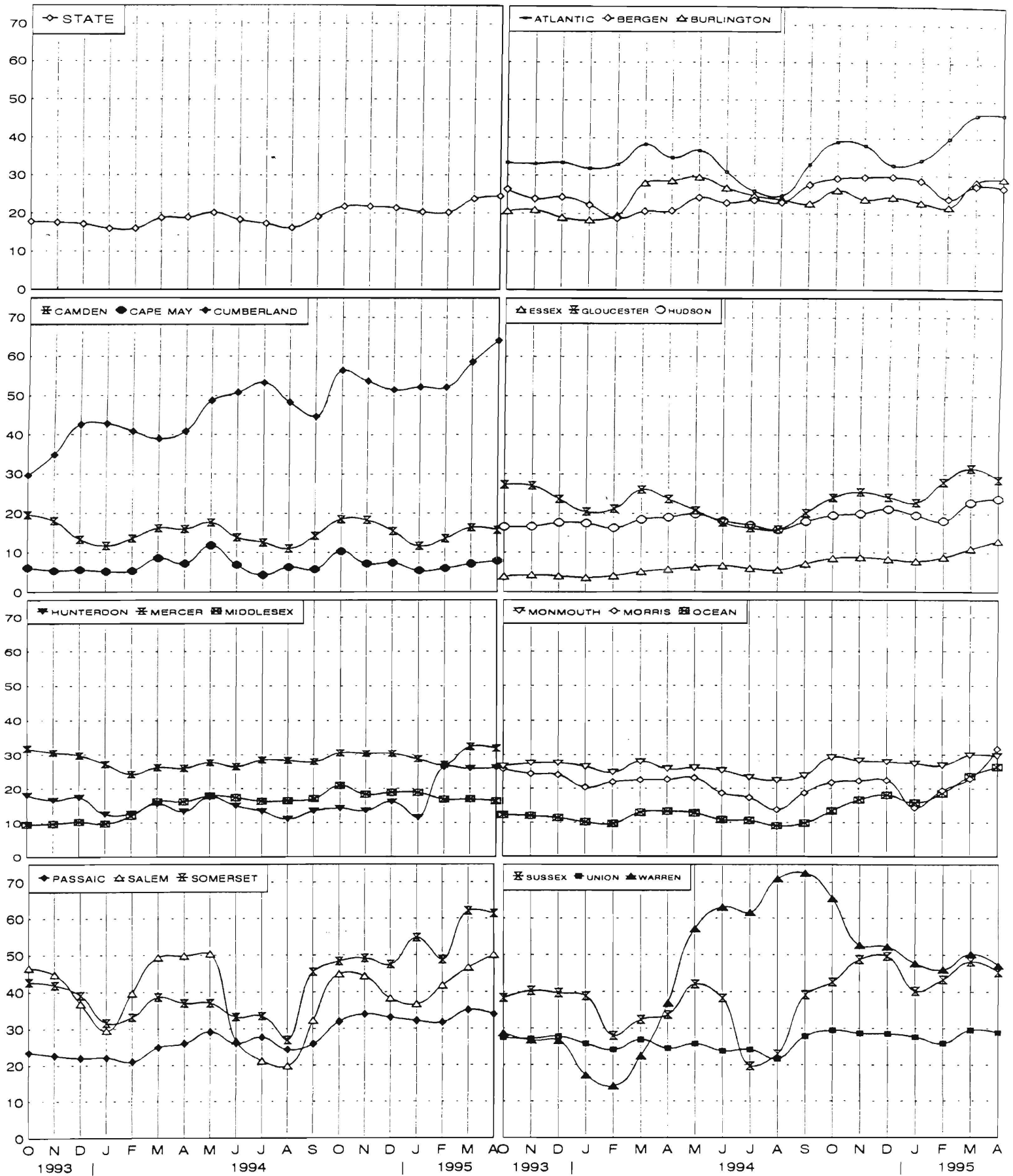
TABLE 8
JOBS/FDP PARTICIPATION RATES BY MONTH
(PERCENT)

COUNTY	OCT 93	NOV 93	DEC 93	JAN 94	FEB 94	MAR 94	APR 94	MAY 94	JUN 94	JUL 94	AUG 94	SEP 94	OCT 94	NOV 94	DEC 94	JAN 95	FEB 95	MAR 95	APR 95
ATLANTIC	33.3	33.1	33.5	32.0	32.9	38.2	34.7	36.6	31.0	26.0	24.8	33.0	39.0	38.0	32.8	34.2	39.8	46.1	46.3
BERGEN	26.3	23.9	24.4	22.4	18.8	20.6	20.7	24.2	22.9	23.5	23.0	27.6	29.3	29.7	29.7	28.6	23.9	27.3	26.9
BURLINGTON	20.6	21.0	19.0	18.4	19.6	28.0	28.6	29.6	26.8	24.7	23.7	22.7	26.2	23.9	24.4	22.9	21.8	28.5	29.2
CAMDEN	19.6	18.0	13.3	11.7	13.6	16.2	16.0	17.6	13.8	12.6	11.1	14.3	18.5	18.3	15.5	11.7	13.6	16.3	15.7
CAPE MAY	6.2	5.4	5.6	5.2	5.4	8.6	7.2	11.8	6.9	4.4	6.3	5.8	10.4	7.3	7.5	5.5	6.0	7.2	7.9
CUMBERLAND	42.6	42.8	40.9	39.0	40.9	48.7	50.8	53.2	48.3	44.7	45.1	52.5	56.4	53.7	51.5	52.2	52.1	58.6	64.1
ESSEX	3.9	4.3	4.1	3.7	4.1	5.2	5.7	6.3	6.7	6.0	5.5	7.2	8.5	8.8	8.3	7.8	8.8	11.0	13.0
GLOUCESTER	27.2	27.0	23.6	20.4	21.2	26.0	23.6	20.7	17.6	16.2	15.8	20.0	24.0	25.5	24.2	22.8	28.1	31.6	28.7
HUDSON	16.6	16.6	17.6	17.5	16.3	18.4	19.0	19.7	18.1	17.0	15.7	17.9	19.5	20.0	21.1	19.6	18.1	22.9	23.8
HUNTERDON	18.1	16.6	17.4	12.5	12.7	15.5	13.3	17.5	15.0	13.3	11.1	13.4	14.2	13.5	16.1	11.5	26.2	25.8	26.1
MERCER	31.8	30.6	29.7	27.1	24.2	26.2	26.0	27.6	26.4	28.4	28.3	27.9	30.5	30.4	30.4	28.7	27.0	32.5	31.9
MIDDLESEX	9.5	9.7	10.3	9.8	12.0	16.2	16.2	17.9	17.4	16.3	16.5	17.1	20.8	18.2	18.8	18.8	16.8	16.9	16.3
MONMOUTH	26.5	27.4	27.5	26.4	24.7	27.9	25.7	26.0	25.2	23.2	22.3	23.7	29.2	28.2	27.8	27.3	26.8	29.9	29.6
MORRIS	25.7	24.3	24.0	20.3	21.9	22.4	22.6	23.1	18.6	17.3	13.7	18.7	21.7	22.2	22.4	14.4	19.5	22.9	31.9
OCEAN	12.2	12.0	11.3	10.1	9.7	12.9	13.2	12.7	10.8	10.6	9.0	9.9	13.4	16.7	18.1	15.8	18.6	23.6	26.4
PASSAIC	23.5	22.7	22.0	22.1	21.0	24.9	26.0	29.2	26.1	27.7	24.3	25.9	31.9	33.9	33.0	32.1	31.7	35.1	33.9
SALEM	46.5	44.7	36.8	29.5	39.7	49.3	49.8	50.3	26.7	21.2	19.8	32.2	44.8	44.2	38.3	36.7	41.7	46.6	50.0
SOMERSET	42.6	41.8	39.1	31.6	33.1	38.6	37.0	37.0	33.2	33.4	26.9	45.4	48.3	49.1	47.4	54.7	48.7	62.0	61.3
SUSSEX	38.4	40.2	39.7	38.9	28.1	32.4	33.7	42.0	38.3	19.7	23.0	39.2	42.6	48.7	49.6	40.2	43.3	48.2	45.3
UNION	27.5	27.2	27.8	25.9	24.2	26.9	24.6	25.8	23.9	24.2	21.8	27.9	29.5	28.7	28.6	27.7	26.0	29.6	28.9
WARREN	28.8	26.8	26.7	17.2	14.3	22.5	37.0	57.1	63.0	61.5	71.0	72.5	65.4	52.6	52.2	47.7	46.1	50.3	47.2
STATE	17.8	17.6	17.2	16.0	16.0	18.8	18.9	20.1	18.3	17.3	16.3	19.1	21.8	21.8	21.5	20.4	20.3	23.8	24.5

GRAPH 8

JOBS/FDP PARTICIPATION RATES (%)

Page 19



New Jersey Department of Human Services
Division of Family Development

TABLE 9

GENERAL ASSISTANCE Program State Summary

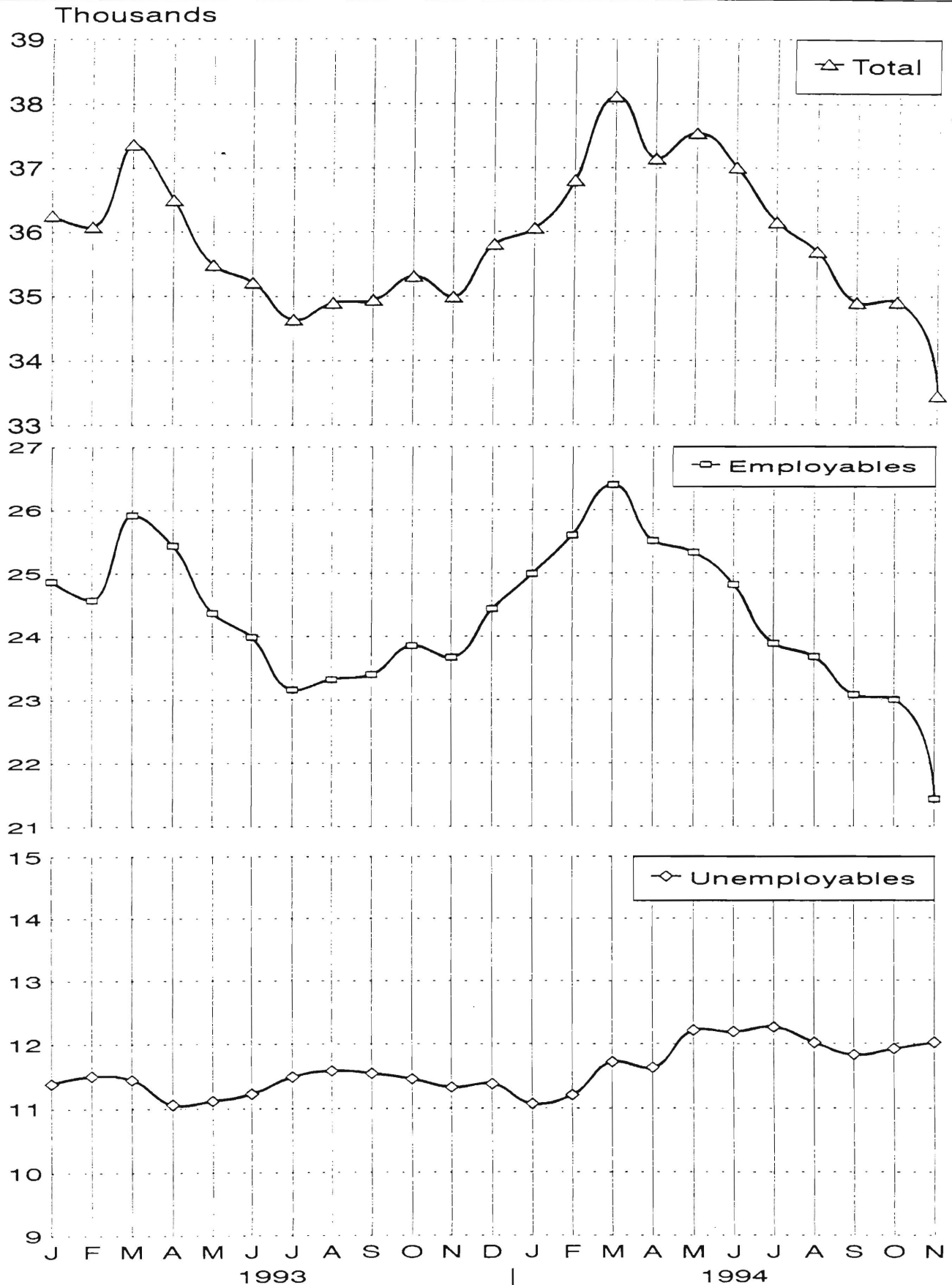
NUMBER OF EMPLOYABLE AND UNEMPLOYABLE
RECIPIENTS DURING REPORT MONTH

January 1993 through November 1994

		Number of Persons Aided		
		Employables	Unemployables	Total
1993	Jan	24,873	11,384	36,257
	Feb	24,576	11,503	36,079
	Mar	25,921	11,445	37,366
	Apr	25,438	11,057	36,495
	May	24,370	11,113	35,483
	Jun	23,989	11,225	35,214
	Jul	23,156	11,488	34,644
	Aug	23,320	11,580	34,900
	Sep	23,402	11,542	34,944
	Oct	23,853	11,455	35,308
	Nov	23,668	11,324	34,992
	Dec	24,435	11,374	35,809
1993	AVERAGE	24,250	11,374	35,624
1994	Jan	24,992	11,062	36,054
	Feb	25,600	11,202	36,802
	Mar	26,397	11,719	38,116
	Apr	25,512	11,629	37,141
	May	25,327	12,212	37,539
	Jun	24,814	12,190	37,004
	Jul	23,884	12,261	36,145
	Aug	23,671	12,018	35,689
	Sep	23,075	11,825	34,900
	Oct	22,994	11,919	34,913
	Nov	21,427	12,017	33,444
1994	AVERAGE	24,336	11,823	36,159

General Assistance Recipients

January 1993 through November 1994



New Jersey Department of Human Services
Division of Family Development

TABLE 10
CHILD SUPPORT AND PATERNITY
State Summary

CHILD SUPPORT AND PATERNITY
COLLECTIONS AND TOTAL DISTRIBUTION

\$1000'S

	Fiscal Years 1993 and 1994			Most Recent 9 Months		
	1993	1994	% CHG.	7/93-3/94	7/94-3/95	% CHG.
COLLECTION SOURCE						
AFDC & FOSTER CARE						
Federal Tax	\$13,139	\$15,255	16.1%	\$3,580	\$2,549	-28.8%
State Tax	1,631	1,970	20.8%	1,700	1,440	-15.3%
Unempl. Ins. Ben.	7,249	4,975	-31.4%	3,864	2,566	-33.6%
Income Withholding	40,928	43,219	5.6%	32,054	33,715	5.2%
Other/Own Behalf	19,130	18,137	-5.2%	13,525	13,726	1.5%
From Other States	4,370	3,621	-17.1%	2,768	2,577	-6.9%
For Other States	5,864	5,269	-10.1%	3,577	5,104	42.7%
TOTAL COLLECTION	\$92,311	\$92,446	0.1%	\$61,069	\$61,678	1.0%
NON- AFDC						
Federal Tax	\$4,937	\$3,846	-22.1%	\$2,018	\$1,544	-23.5%
State Tax	1,459	2,193	50.3%	1,884	1,700	-9.8%
Unempl. Ins. Ben.	19,274	15,035	-22.0%	11,530	9,191	-20.3%
Income Withholding	158,036	213,431	35.1%	156,304	185,025	18.4%
Other/Own Behalf	117,224	143,676	22.6%	106,753	117,329	9.9%
From Other States	20,199	19,832	-1.8%	14,909	15,470	3.8%
For Other States	24,316	19,893	-18.2%	13,385	20,241	51.2%
TOTAL COLLECTION	\$345,445	\$417,905	21.0%	\$306,785	\$350,499	14.2%
TOTAL						
Federal Tax	\$18,076	\$19,101	5.7%	\$5,599	\$4,093	-26.9%
State Tax	3,090	4,162	34.7%	3,584	3,140	-12.4%
Unempl. Ins. Ben.	26,523	20,010	-24.6%	15,394	11,756	-23.6%
Income Withholding	198,965	256,650	29.0%	188,358	218,741	16.1%
Other/Own Behalf	136,354	161,813	18.7%	120,278	131,055	9.0%
From Other States	24,568	23,453	-4.5%	17,677	18,047	2.1%
For Other States	30,180	25,162	-16.6%	16,962	25,346	49.4%
TOTAL COLLECTION	\$437,756	\$510,351	16.6%	\$367,854	\$412,177	12.0%

Collection Source: Reflects Collections Recorded by County Probation Departments

Explanatory Notes

The Department of Human Services Division of Family Development provides basic income and an opportunity to achieve self-sufficiency for individuals and families served by the Division's programs. The Division provides leadership, direction and supervision to those public agencies responsible for administering those programs and plans for and develops policies to promote self-sufficiency.

AID TO FAMILIES WITH DEPENDENT CHILDREN (AFDC) - Financial assistance for dependent children and their natural or adoptive parents, or certain other relatives recognized as taking the place of a parent.

Regular AFDC (C Segment) - assistance when only one parent is in the home due to death or absence, or both parents are in the home but at least one is incapacitated.

Unemployed Parents (F Segment) - assistance when both parents are in the home, neither is incapacitated and the primary wage earner meets the federally defined criteria for unemployment.

State AFDC (N Segment) - assistance when both parents are in the home, neither is incapacitated, and the primary wage earner does not meet the federal definition of unemployment.

Medicaid Only - families no longer receiving AFDC financial assistance but remaining eligible for Medicaid under applicable provisions which extend coverage beyond period of AFDC assistance.

FOOD STAMP PROGRAM (FS) - Authorized by Congress as a nutritional supplement program to provide low income households with more food of greater variety and better nutrition. Program eligibility is based on household income, resources, and expenses for medical, shelter, and dependent care. CWA staff refer certain recipients to the New Jersey Department of Labor for participation in the Food Stamp Employment and Training Program.

EMERGENCY ASSISTANCE (EA) - Payments to those eligible for AFDC (also for General Assistance or Supplemental Security Income, not included here), authorized during the 30 consecutive days immediately following the emergency (defined as a substantial loss of shelter, food, clothing, or household furnishings by fire, flood or other similar disaster) or if the eligible individual or family is in an imminent or actual state of homelessness.

JOBS/FDP

JOB OPPORTUNITY AND BASIC SKILLS PROGRAM (JOBS) - Federally mandated work/training program for recipients of AFDC established by the Family Support Act of 1988 under Part F of Title IV of the Social Security Act.

FAMILY DEVELOPMENT PROGRAM (FDP) - Reform legislation enacted by the State Legislature in January 1992 to: build, strengthen, and support the family unit; encourage family formation; reduce the long-term aspects of welfare dependency; look to the needs of the family unit as a whole; emphasize education and training for all family members; maximize use of educational, training and employment resources; and develop genuine private sector job opportunities.

SNAPSHOT OF ACTIVITY AT POINT IN TIME - Status of activities as of the end of the month:

Total Non-Exempt JOBS/FDP Recipients - Calculation of the number of mandatory IV-F individuals (FAMIS report # FB304).

Employment Directed Activities (EDA) - From Activities Summary Report (OMEGA report # RM064). Unduplicated count of persons participating in **Training, Education, or Job Search**.

Participants in EDA, Receiving Support Services - From Issuance Disbursement Summary (OMEGA report # RM703). Total number of active participants who show receipt of **Training Related Expenses or Child Care**.

Participation Rate (JOBS/FDP) - Federally mandated calculation method, dividing the number of participants whose combined and averaged weekly hours of participation in qualifying activities equals or exceeds 20 hours per week by the total number of non-exempt IV-F recipients. As of the end of the month.

ACTIVITY FOR THE MONTH - Number of participants with the indicated activity during the month:

Participants with First Case Management Interview - From Activities Summary Report (OMEGA report # RM064).

Number of Persons Employed This Month, Still Receiving AFDC - From Activities Summary Report (OMEGA report # RM064).

Number of Persons Closed on FAMIS Due to Earnings - From FAMIS report # FM463.

Post AFDC and Receiving Child Care - Persons no longer in receipt of AFDC, but still receiving child care. From Issuance Disbursement Summary (OMEGA report # RM703).

New Jersey Department of Human Services
Division of Family Development

TABLE 11**GENERAL ASSISTANCE Program**

NUMBER OF EMPLOYABLE AND UNEMPLOYABLE
RECIPIENTS DURING REPORT MONTH
Counties and 21 Largest Municipalities

November 1994

County	Employables	Unemployables	Total	Municipality	Employables	Unemployables	Total
ATLANTIC	1,347	538	1,885	Atlantic City	1,104	278	1,382
BERGEN	531	572	1,103	Mount Holly	182	101	283
BURLINGTON	615	443	1,058	Camden	2,078	744	2,822
CAMDEN	2,499	1,177	3,676	Vineland	180	101	281
CAPE MAY	190	120	310	East Orange	522	462	984
CUMBERLAND	359	218	577	Irvington	256	87	343
ESSEX	7,404	2,356	9,760	Montclair	205	106	311
GLOUCESTER	205	197	402	Newark	5,818	1,453	7,271
HUDSON	1,232	1,593	2,825	Orange	481	35	516
HUNTERDON	56	59	115	Bayonne	133	73	206
MERCER	1,903	717	2,620	Hoboken	193	119	312
MIDDLESEX	661	597	1,258	Jersey City	694	559	1,253
MONMOUTH	1,026	761	1,787	Trenton	1,789	583	2,372
MORRIS	142	231	373	Perth Amboy	131	122	253
OCEAN	871	536	1,407	Asbury Park	303	98	401
PASSAIC	1,949	584	2,533	Long Branch	240	126	366
SALEM	160	105	265	Lakewood	434	142	576
SOMERSET	86	151	237	Passaic	461	227	688
SUSSEX	76	68	144	Paterson	1,371	184	1,555
UNION	1,678	963	2,641	Elizabeth	1,124	552	1,676
WARREN	56	59	115	Plainfield	169	95	264
NJ TOTAL	23,046	12,045	35,091	TOTAL	17,868	6,247	24,115