



State of New Jersey

2012-13

19-3660-050

NORTH HUNTERDON HIGH SCHOOL
1445 STATE ROUTE 31
ANNANDALE, NEW JERSEY 08801

OVERVIEW

HUNTERDON

N HUNT/VOORHEES REGIONAL

GRADE SPAN 09-12

This school's academic performance is **very high when compared** to schools across the state. Additionally, its academic performance is **high when compared** to its peers. This school's college and career readiness is **high when compared** to schools across the state. Additionally, its college and career readiness is **about average when compared** to its peers. This school's graduation and post-secondary performance is **high when compared** to schools across the state. Additionally, its graduation and post-secondary readiness **significantly lags in comparison** to its peers.

Performance Areas	Peer Percentile	Statewide Percentile	Percent of Targets Met
Academic Achievement	66	82	83%
College & Career Readiness	45	76	80%
Graduation and Post-Secondary	17	63	100%

Improvement Status

N/A

Rationale

N/A

Very High Performance is defined as being **equal to or above the 80th percentile**.

High Performance is defined as being **between the 60th and 79.9th percentiles**.

Average Performance is defined as being **between the 40th and 59.9th percentiles**.

Lagging Performance is defined as being **between the 20th and 39.9th percentiles**.

Significantly Lagging Performance is defined as being **equal to or below the 19.9th percentile**.

Peer Schools are schools that have similar grade levels and students with similar demographic characteristics, such as the percentage of students qualifying for Free/Reduced Lunch, Limited English Proficiency programs or Special Education programs.

Academic Achievement

This school outperforms **82%** of schools statewide as noted by its statewide percentile and **66%** of schools educating students with similar demographic characteristics as noted in its peer school percentile in the performance area of Academic Achievement. Additionally, this school is meeting **83%** of its performance targets in the area of Academic Achievement.



Academic Achievement measures the content knowledge students have in language arts literacy and math. For high schools, this includes measures of the school's proficiency rate on both the Language Arts Literacy and Math sections of the New Jersey High School Proficiency Assessment (HSPA). A proficiency rate is calculated by summing the count of students who scored either proficient or advanced proficient on the assessment and dividing by the count of valid test scores.

College and Career Readiness

This school outperforms **76%** of schools statewide as noted by its statewide percentile and **45%** of schools educating students with similar demographic characteristics as noted in its peer school percentile in the performance area of College and Career Readiness. Additionally, this school is meeting **80%** of its performance targets in the area of College and Career Readiness.



College and Career Readiness measures the degree to which students are demonstrating behaviors that are indicative of future attendance and/or success in college and careers. For high schools, this includes measures of participation in college readiness tests such as the SAT, ACT or PSAT and in rigorous coursework as defined by participation in AP or IB courses in English, math, social studies and science.

Graduation and Post-Secondary

This school outperforms **63%** of schools statewide as noted by its statewide percentile and **17%** of schools educating students with similar demographic characteristics as noted in its peer school percentile in the performance area of Graduation and Post-Secondary. Additionally, this school is meeting **100%** of its performance targets in the area of Graduation and Post-Secondary.



Graduation and Postsecondary measures the rate at which students who begin high school four years earlier graduate within four years. Also included is a measure of the rate at which students in a particular school drop out of school.

State of New Jersey

2012-13

19-3660-050

NORTH HUNTERDON HIGH SCHOOL

1445 STATE ROUTE 31

ANNANDALE, NEW JERSEY 08801

DEMOGRAPHIC INFORMATION

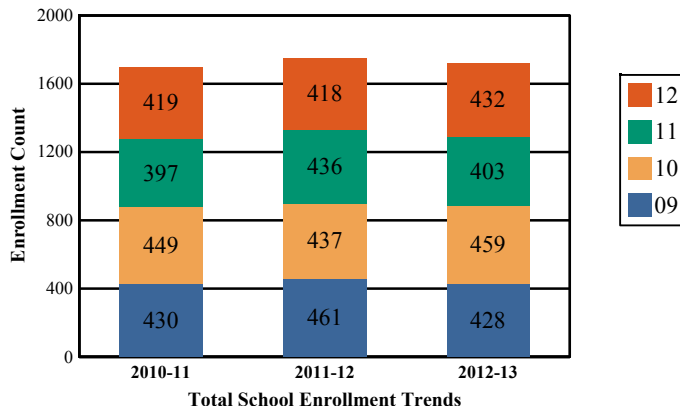
HUNTERDON

N HUNT/VOORHEES REGIONAL

GRADE SPAN 09-12

Enrollment by Grade, in Full Time Equivalent

This graph presents the count of students who were 'on roll' by grade in October of each school year.



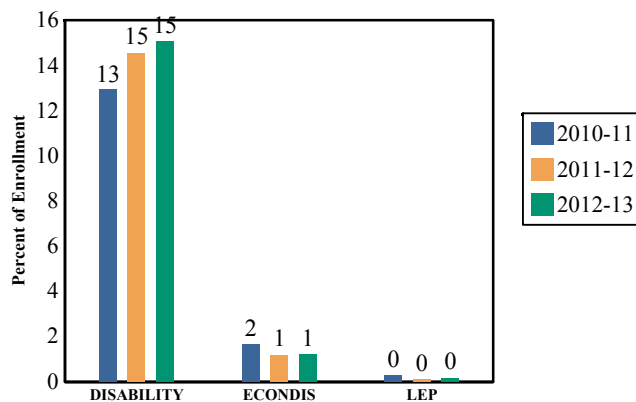
Total School Enrollment Trends

Note: "UG" represents the count of students who are 'on roll' in this school but who are educated in ungraded classrooms, meaning that the classrooms may contain students from multiple grade levels.

Total School Enrollment in Full Time Equivalent

2011-12	1,751
2012-13	1,721

Enrollment Trends by Program Participation



Current Year Enrollment by Program Participation

2012-2013	Count of Students	Percentage of Enrollment
Students with Disability	259	15%
Economically Disadvantaged Students	21	1.2%
Limited English Proficient Students	3	0.2%

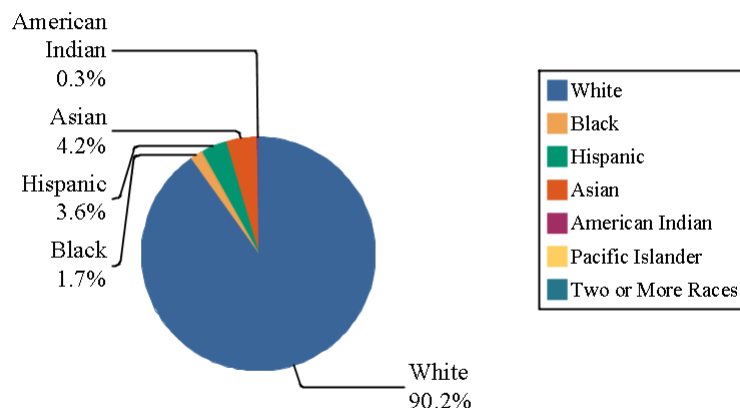
Language Diversity

This table presents the percentage of students who primarily speak each language in their home.

2012-13	Percent
English	99.2%
Korean	0.2%
Chinese	0.2%
Spanish	0.1%
Persian	0.1%
Tagalog	0.1%
Other	0.2%

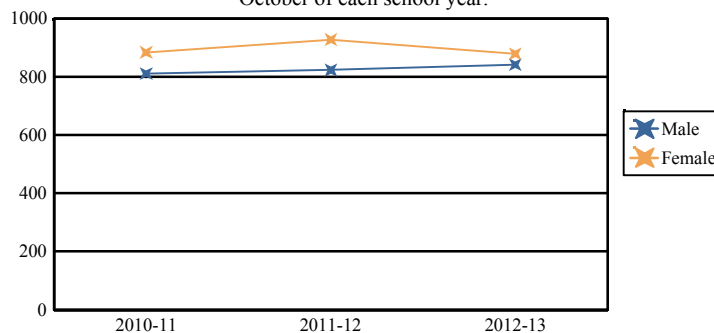
Enrollment by Ethnic/Racial Subgroup

This graph presents the percentages of enrollment for each subgroup defined by the No Child Left Behind Act of 2001



Enrollment by Gender

This graph presents the count of students by gender who were 'on roll' (FTE) in October of each school year.



	Male	Female
2010-11	811	884
2011-12	823	928
2012-13	842	879



State of New Jersey

2012-13

19-3660-050

NORTH HUNTERDON HIGH SCHOOL
1445 STATE ROUTE 31
ANNANDALE, NEW JERSEY 08801

ACADEMIC ACHIEVEMENT

HUNTERDON

N HUNT/VOORHEES REGIONAL

GRADE SPAN 09-12

Academic Achievement measures the content knowledge students have in Language Arts Literacy and Math. In high schools, this includes the outcomes of the New Jersey High School Proficiency Assessment (HSPA). The first column - Schoolwide Performance - in the table below includes measures of the total schoolwide proficiency rate in both Language Arts Literacy and Math across multiple administrations of the assessment. The second column - Peer School Percentile - indicates where the school's proficiency rate compares to its group of peer schools. For example, a school that has a peer school percentile of 65 has a proficiency rate that is higher than 65% of its peer schools. The third column - Statewide Percentile - indicates where the school's proficiency rate compares to schools across the state. For example, a school that has a statewide percentile of 30 has a proficiency rate that is higher than 30% of all schools with HSPA scores statewide. The last column - Percent of Targets Met - presents the percentage of progress targets met as defined by the NJDOE's NCLB waiver.

The Summary row presents the averages of the peer school percentiles, the average of statewide percentiles and the percentage of statewide targets met.

Academic Achievement Indicators	Schoolwide Performance	Peer Percentile	State Percentile	Percent of Targets Met
HSPA Language Arts Proficiency and above	98%	55	77	100%
HSPA Math Proficiency and above	96%	77	87	67%
SUMMARY - Academic Achievement		66	82	83%

NCLB Progress Targets - Language Arts Literacy

This table presents the Progress Targets as uniquely calculated for each subgroup in each school under NJDOE's NCLB waiver. The methodology - as defined by the United States Department of Education - is calculated so that each subgroup will halve the gap between their 2011 proficiency rate and 100% proficiency by 2017.

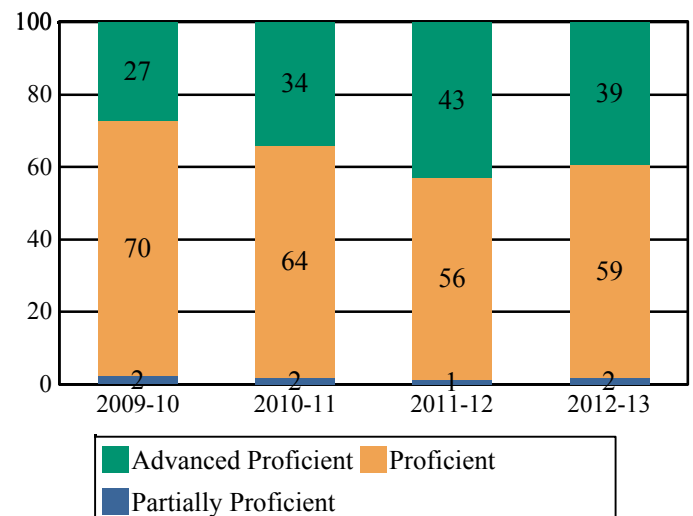
Subgroups	Total Valid Scores	Pass Rate	Target	Met Target?
Schoolwide	439	98.2	90	YES
White	392	98.2	90	YES
Black	-	-		--
Hispanic	-	-		--
American Indian	-	-		--
Asian	-	-		--
Two or More Races	-	-		--
Students with Disability	63	87.3	90	YES*
Limited English Proficient Students	-	-		--
Economically Disadvantaged Students	-	-		--

YES* = Met Progress Target (Confidence Interval Applied)

Data is presented for subgroups when the count is high enough under NCLB suppression rules.

Proficiency Trends - Language Arts Literacy

This graph presents the percentage of students who scored in the Advanced Proficient, Proficient and Partially Proficient categories of the statewide Language Arts Literacy assessment over the prior four years.



State of New Jersey

2012-13

19-3660-050

NORTH HUNTERDON HIGH SCHOOL

1445 STATE ROUTE 31

ANNANDALE, NEW JERSEY 08801

ACADEMIC ACHIEVEMENT

HUNTERDON

N HUNT/VOORHEES REGIONAL

GRADE SPAN 09-12

NCLB Progress Targets - Math

This table presents the Progress Targets as uniquely calculated for each subgroup in each school under NJDOE's NCLB waiver. The methodology - as defined by the United States Department of Education - is calculated so that each subgroup will halve the gap between their 2011 proficiency rate and 100% proficiency by 2017.

Subgroups	Total Valid Scores	Pass Rate	Target	Met Target?
Schoolwide	441	96.1	90	YES
White	394	96	90	YES
Black	-	-		--
Hispanic	-	-		--
American Indian	-	-		--
Asian	-	-		--
Two or More Races	-	-		--
Students with Disability	65	75.4	90	NO
Limited English Proficient Students	-	-		--
Economically Disadvantaged Students	-	-		--

YES* = Met Progress Target (Confidence Interval Applied)

Data is presented for subgroups when the count is high enough under NCLB suppression rules.

Proficiency Outcomes - Biology

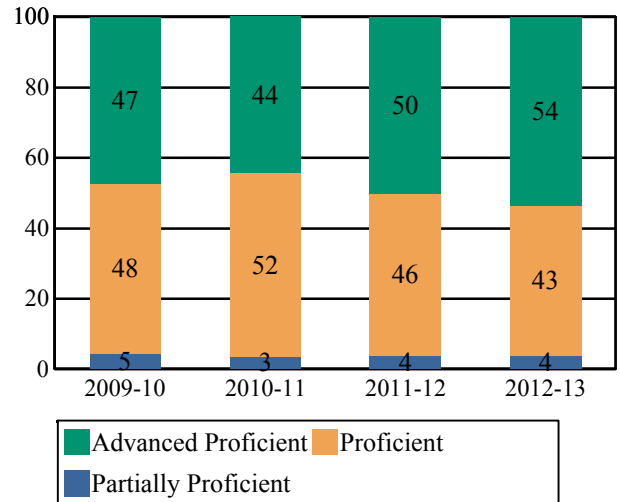
This table presents the percentage of students who scored in the Advanced Proficient, Proficient and Partially Proficient categories of the New Jersey Biology Competency Test (NJBCT) in the latest school year.

Subgroups	Advanced	Proficient	Partially Proficient
Schoolwide	47%	39%	14%
White	47%	40%	13%
Black	-	-	-
Hispanic	-	-	-
American Indian	-	-	-
Asian	-	-	-
Two or More Races	-	-	-
Students with Disability	12%	30%	58%
Limited English Proficient Students	-	-	-
Economically Disadvantaged Students	-	-	-

Data is presented for subgroups when the count is high enough under NCLB suppression rules.

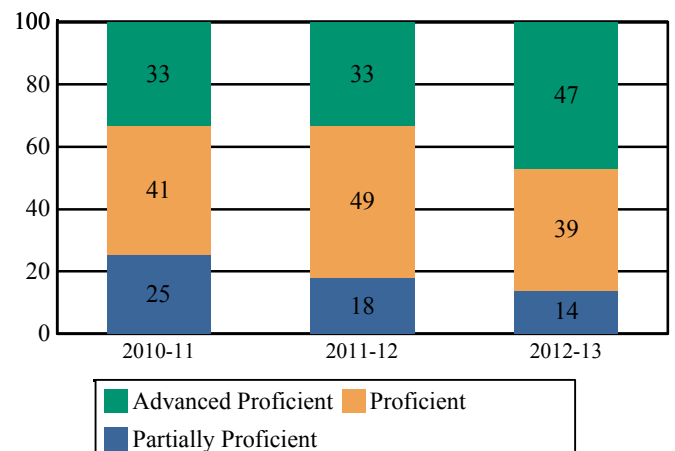
Proficiency Trends - Math

This graph presents the percentage of students who scored in the Advanced Proficient, Proficient and Partially Proficient categories of the statewide Math assessment over the prior four years.



Proficiency Trends - Biology

This graph presents the percentage of students who scored in the Advanced Proficient, Proficient, and Partially Proficient categories of the Biology Competency Test over the last two years.



State of New Jersey

2012-13

19-3660-050

COLLEGE AND CAREER READINESS

HUNTERDON

N HUNT/VOORHEES REGIONAL

GRADE SPAN 09-12

NORTH HUNTERDON HIGH SCHOOL

1445 STATE ROUTE 31

ANNANDALE, NEW JERSEY 08801

Students in high schools begin to demonstrate college readiness behaviors long before they actually graduate from high school. Among those behaviors are taking college entrance exams and challenging themselves with rigorous course work. The table below presents five such indicators: the percentage of students enrolled in the 12th grade who took the SAT or ACT, the percentage of 10th and 11th graders who took the PSAT, the percentage of students who scored above the SAT benchmark of 1550, the percentage of 11th and 12th graders who took at least one AP or IB test in English, math, social studies or science, and the percentage of those AP or IB tests that were scored a 3 or higher.

The first column - Schoolwide Performance - represents the outcomes for these particular indicators in the school. The second column - Peer School Percentile - indicates how the school's performance compares to its group of peer schools. For example, a school whose peer school percentile is 65 in SAT participation has a higher SAT Participation than 65% of its peer group. The third column - Statewide Percentile - indicates how the school's performance compares to schools across the state. The fourth column - Statewide Target - provides the statewide targets for each of these indicators. The last column - Met Target? - indicates whether the School Performance met or exceeded the statewide target.

The Summary row presents the averages of the peer school percentiles, the average of statewide percentiles and the percentage of statewide targets met.

College and Career Readiness Indicators	Schoolwide Performance	Peer Percentile	Statewide Percentile	Statewide Target	Met Target?
Percent of Students Participating in SAT or ACT	89%	16	67	80%	YES
Percent of Students Participating in PSAT	56%	23	56	60%	NO
Percent of Students Scoring Above 1550 on SAT	67%	55	88	40%	YES
Percent of Students Taking at least one AP Test or IB Test in English, Math, Social Studies or Science	37%	77	89	35%	YES
Percent of AP Tests ≥ 3 or IB Test ≥ 4 in English, Math, Social Studies or Science	88%	55	81	75%	YES
Summary		45	76		80%

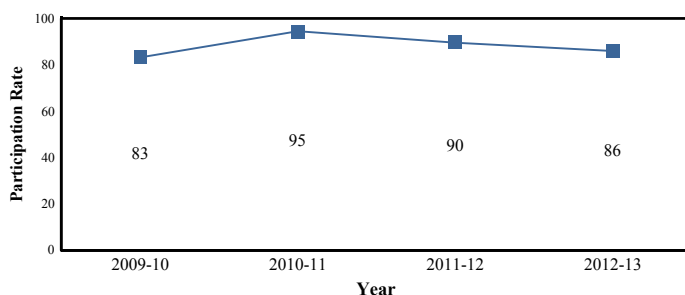
College Readiness Test Participation

The first column of the table below presents the percentage of students enrolled in the 12th grade who took the SAT or ACT and the percentage of students enrolled in 10th and 11th grade who took the PSAT. The second column provides the average across the school's peer group for these two metrics.

2012-13 Percent of Students	School	Peer Avg.	State Avg.
Participating in SAT	86.0%	89.2%	75.3%
Participating in ACT	20.2%		20.6%
Participating in PSAT	56.4%	70.7%	52.5%

Participation Trends - SAT Testing

This graph presents the participation rate in the SAT over the last four years.



AP/IB Participation - 'Unique' Students

The table below presents the proportion of 'unique' students enrolled in at least 11th and 12th grade i.e., each student is counted once regardless of how many AP or IB courses he/she may take. The table also presents the proportion of how many 'unique' students took at least one AP or IB test to the school's enrollment in 11th and 12th grade.

2012-13 Percent of Students Taking	School	Peer Avg.	State Avg.
One or More Course	61.1%	51.6%	32.8%
One or More Test	58.5%	43.8%	26.8%
At least one AP or IB Test in English, Math, Social Studies or Science	37.1%	32.9%	18.9%

Note: Students who are enrolled in AP/IB coursework or take AP/IB tests in grades other than 11th and 12th are included in the numerator of this calculation.

AP /IB Test Results

This table presents the percentage of all AP/IB tests taken by students enrolled in the school that were scored AP ≥ 3 and scored IB ≥ 4 .

2012-13	School	Peer Avg.	State Avg.
Percent of AP Tests ≥ 3 or IB Test ≥ 4	85.7%	85.0%	74.6%
Percent of Scores in AP ≥ 3 or IB ≥ 4 in English, Math, Social Studies or Science	88.1%	86.7%	75.1%

COLLEGE AND CAREER READINESS

HUNTERDON

N HUNT/VOORHEES REGIONAL

GRADE SPAN 09-12

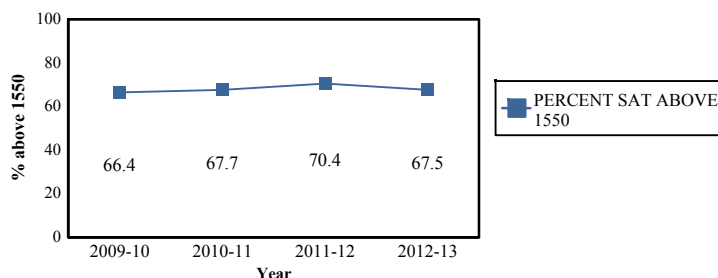
Scholastic Assessment Test (SAT) Results

This table presents the percentage of students who achieved a composite SAT score of 1550 or higher. The SAT benchmark score of 1550 (Critical Reading, Mathematics and Writing Score combined) indicates a 65 percent likelihood of achieving a B- average or higher during the first year of college, which in turn has been found by the College Board's research to be indicative of a high likelihood of college success and completion.

2012-13	School	Peer Avg.	State Avg.
Percent of Students Scoring Above 1550 on SAT	67.5%	64.5%	43.9%

SAT Benchmark Trends

This chart presents the percentage of students who achieved a composite SAT score of 1550 or higher over the past four years.



Composite SAT Score

This chart presents the average composite SAT score from the last academic year for students enrolled in this school as well as the average scores achieved in Critical Reading, Mathematics and Writing. The averages from this school's peer group are also presented.

2012-13	School	Peer Avg.	State Avg.
Composite SAT Score	1,687	1,669	1,512
Critical Reading	559	546	495
Mathematics	579	570	521
Writing	549	553	496

This chart presents the scores achieved in Critical Reading, Mathematics and Writing by the students at the 25th percentile, the 50th percentile and the 75th percentile of the school's distribution of SAT scores.

2012-13	Critical Reading	Mathematics	Writing
75th Percentile	630	650	630
50th Percentile	560	580	550
25th Percentile	490	510	470

AP/IB Courses Offered

This table presents the count of students enrolled in each AP/IB course offered in this school in the first column. The second column presents the count of tests taken in each AP/IB course. The numbers may not match as some students do not take the test in the same year as they take the course and some students may take the course without taking the test or vice versa.

AP/IB Course Name	Students Enrolled	Students Tested
AP Psychology	219	178
AP Environmental Science	157	102
AP U.S. History	104	104
AP Biology	79	79
AP U.S. Government and Politics	51	43
AP Chemistry	50	51
AP Statistics	49	41
AP English Language and Composition	49	49
AP Calculus AB	44	45
AP Economics	26	5
AP Spanish Language	25	25
AP Studio Art—Drawing Portfolio	24	15
AP Computer Science A	24	18
AP French Language	21	20
AP Studio Art—General Portfolio	21	15
AP Calculus BC	21	23
AP English Literature and Composition	20	19
AP Music Theory	17	15
AP Physics C	17	17
AP Physics B	16	17
AP Latin (Virgil, Catullus and Horace)	15	15



State of New Jersey

2012-13

19-3660-050

COLLEGE AND CAREER READINESS

HUNTERDON

N HUNT/VOORHEES REGIONAL

GRADE SPAN 09-12

NORTH HUNTERDON HIGH SCHOOL

1445 STATE ROUTE 31

ANNANDALE, NEW JERSEY 08801

Visual and Performing Arts

The chart below contains the percentage of students who were enrolled in at least one Dance, Drama/Theater, Music or Visual Arts class in this school. The last row shows the percentage of students who were enrolled in any Visual and Performing Arts classes in the school.

Percent of Students Enrolled	School	State
Dance	N/R	1.8%
Drama/Theater	N/R	3.5%
Music	21.3%	16.7%
Visual Arts	38.9%	30.2%
Total: All Visual and Performing Arts	55.7%	47.3%

N/R - Data Not Reported



State of New Jersey

2012-13

19-3660-050

GRADUATION AND POSTSECONDARY

HUNTERDON

N HUNT/VOORHEES REGIONAL

GRADE SPAN 09-12

NORTH HUNTERDON HIGH SCHOOL

1445 STATE ROUTE 31

ANNANDALE, NEW JERSEY 08801

This section of the performance report presents data about graduation, dropout and post-secondary attendance. The graduation rate is calculated according to the NCLB Cohort methodology as required by the United States Department of Education. Dropout rates are calculated from student-level data submitted by districts for students officially classified as dropouts. The dropout rate is the count of students who dropout in an academic year divided by the school's total enrollment.

The first column - Schoolwide Performance - represents the outcomes for these particular indicators in this school. The second column - Peer School Percentile - indicates how the school's performance compares to its group of peer schools. For example, a school whose peer percentile is 65 in Graduation Rate has a higher Graduation Rate than 65% of its peer group. The third column - Statewide Percentile - indicates how the school's performance compares to schools across the state. The fourth column - Statewide Target - provides the statewide targets for each of these indicators. The Statewide Target for Graduation Rate was established pursuant to NJDOE's NCLB Accountability Workbook. The last column - Met Target - indicates whether the School Performance met or exceeded the statewide target.

The Summary row presents the averages of the peer school percentile, the average of statewide percentile and the percentage of statewide targets met.

Graduation & Post Secondary Indicators	Schoolwide Performance	Peer Percentile	Statewide Percentile	Statewide Targets	Met Target
Overall Graduation Rate	95%	17	67	75%	YES
Dropout Rate	0.3%	16	59	2%	YES
SUMMARY - Graduation & Post-Secondary		17	63		100%

Graduation Rate by Subgroup

This table presents for all NCLB-identified subgroups the "4-year Adjusted Graduation Rate." This rate calculates the percentage of students who are awarded a regular, high school diploma within four years of becoming a first-time ninth grader. The rate is adjusted to account for students who 'transfer-in' and for students who are verified as 'transfers-out'.

	School	State Target
Schoolwide	95%	75%
White	96%	
Black	-	
Hispanic	-	
American Indian	-	
Asian	-	
Native Hawaiian	-	
Two or More Races	-	
Students with Disability	84%	
Limited English Proficient Students	-	
Economically Disadvantaged Students	-	

Dropout Rate by Subgroup

This table presents for all NCLB-identified subgroups the Dropout rate. This rate calculates the percentage of students who are classified as dropouts divided by the school's total enrollment and by each subgroup enrollment.

	School	State Target
Schoolwide	.3%	2%
White	.3%	
Black	-	
Hispanic	3.1%	
American Indian	-	
Asian	0%	
Native Hawaiian	-	
Two or More Races	-	
Students with Disability	.4%	
Limited English Proficient Students	-	
Economically Disadvantaged Students	-	

State of New Jersey

2012-13

19-3660-050

GRADUATION AND POSTSECONDARY

HUNTERDON

N HUNT/VOORHEES REGIONAL

GRADE SPAN 09-12

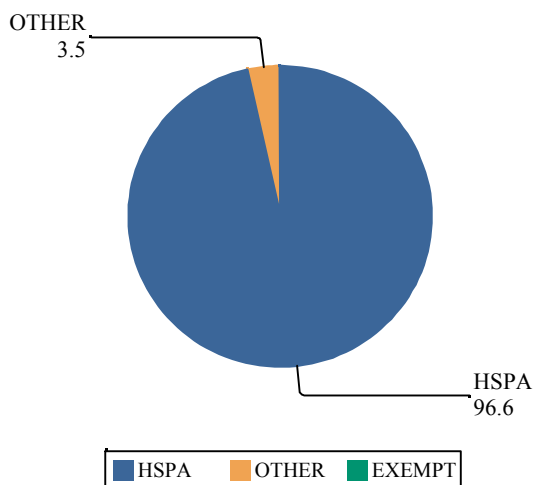
NORTH HUNTERDON HIGH SCHOOL

1445 STATE ROUTE 31

ANNANDALE, NEW JERSEY 08801

Graduation Pathway Rates

This chart presents the percentage of high school graduates who graduated by passing both sections of the HSPA, who were exempt from passing the HSPA, or who demonstrated proficiency through an alternative pathway such as through the Alternative High School Assessment, achievement of the 'Just Proficient Mean' or an appeal process.



Extended Year Graduation Rate

The chart below presents the 4-year and 5-year graduation rate for the prior school year's cohort in addition to the 4-year graduation rate for last year's cohort.

Class of	4-year Rate	5-year Rate
2011	98%	95%
2012	97%	96%
2013	95%	

Postsecondary Enrollment Rates

This chart presents the enrollment rates of this school's high school graduates, 16-months after high school graduation. The data is from the National Student Clearinghouse which reports that it collects student-level enrollment data from 95% of Institutions of Higher Education nationwide.

The last columns indicate, for the schoolwide total and each subgroup, the percentage of postsecondary enrollees that were enrolled in either a 2 year or a 4 year institution.

	Percent Enrolled	Percent in 2 Year	Percent in 4 Year
Schoolwide	85%	16.7%	83.3%
White	85%	17.3%	82.7%
Black	-	-	-
Hispanic	-	-	-
Asian	-	-	-
American Indian	-	-	-
Native Hawaiian	-	-	-
Two or More Races	-	-	-
Students with Disability	58.1%	38.9%	61.1%
Limited English Proficient Students	-	-	-
Economically Disadvantaged Students	-	-	-



State of New Jersey

2012-13

19-3660-050

NORTH HUNTERDON HIGH SCHOOL
1445 STATE ROUTE 31
ANNANDALE, NEW JERSEY 08801

WITHIN SCHOOL ACHIEVEMENT GAP

HUNTERDON

N HUNT/VOORHEES REGIONAL

GRADE SPAN 09-12

This section of the performance report presents data about the achievement gap that exists within a school - as measured by the difference between the students' scale scores at the 25th and 75th percentile in the school, the so-called Interquartile Range (IQR). Taken together with an understanding of the overall and average achievement levels in the school, the IQR furthers an understanding of the range of student outcomes that exist in a school. A school gap smaller than the state gap indicates that the school's range of student outcomes is narrower than the state's while a school gap larger than the state gap indicates that the school's range of student outcomes is larger than the state's.

High School

HSPA Language Arts 25th %ile vs 75th%ile

This table presents the scale scores associated with students at the bottom (0th percentile), the 25th percentile, the 50th percentile, the 75th percentile and the top (99th percentile) of school's distribution.

Percentile	School Scaled Score	State Scaled Score
99th	276	291
75th	255	247
50th	244	237
25th	234	222
0th	150	100

	Scaled Score Gap - School	Scaled Score Gap - State
25th vs 75th Gap	21	25

Grade Level - 11

HSPA Math 25th %ile vs 75th%ile

This table presents the scale scores associated with students at the bottom (0th percentile), the 25th percentile, the 50th percentile, the 75th percentile and the top (99th percentile) of school's distribution.

Percentile	School Scaled Score	State Scaled Score
99th	300	300
75th	263	251
50th	251	231
25th	230	209
0th	145	136

	Scaled Score Gap - School	Scaled Score Gap - State
25th vs 75th Gap	33	42



State of New Jersey

2012-13

19-3660-050

NORTH HUNTERDON HIGH SCHOOL

1445 STATE ROUTE 31

ANNANDALE, NEW JERSEY 08801

SCHOOL CLIMATE

HUNTERDON

N HUNT/VOORHEES REGIONAL

GRADE SPAN 09-12

Length of School Day

This table presents the amount of time a school is in session for a typical student on a normal school day.

	School
2012-13	7 Hrs. 30 Mins.

Student Suspension Rate

This table presents the percentage of students who were suspended one or more times during the school year.

	School
2012-13	4.1%

Instructional Time

This table presents the amount of time that a typical student is engaged in instructional activities under the supervision of a certified teacher.

2012-13	School
Full Time	6 Hrs. 40 Mins.
Shared Time	3 Hrs. 20 Mins.

Student Expulsions

This table presents the number of students who were expelled from the school and district during the school year.

	School
2012-13	0

Student to Staff Ratio

This table presents the count of students per faculty member or administrator in the school. All staff are counted in full-time equivalents.

2012-13	School
Faculty	10
Administrators	430

SCHOOL PEER GROUP**North Hunterdon High School****19-3660-050**

This table presents the list of peer schools in alphabetical order by county name that was created specifically for this school (highlighted in yellow). Peer schools are drawn from across the state and represent schools that have similar grade configurations and that are educating students of similar demographic characteristics, as measured by enrollment in Free/Reduced Lunch Programs, Limited English Proficiency or Special Education Programs.

<u>COUNTY NAME</u>	<u>DISTRICT NAME</u>	<u>SCHOOL NAME</u>	<u>CDS CODE</u>	<u>GRAD ESPAN</u>	<u>FRPL</u>	<u>LEP</u>	<u>SpED</u>
BERGEN	GLEN ROCK BORO	GLEN ROCK HIGH SCHOOL	03-1760-050 09-12		0.2%	0.4%	14.3%
BERGEN	MIDLAND PARK BORO	MIDLAND PARK HIGH SCHOOL	03-3170-050 07-12		0.4%	0.0%	12.7%
BERGEN	NORTHERN HIGHLANDS REGIONAL	NORTHERN HIGHLANDS REGIONAL HIGH SCHOOL	03-3700-050 09-12		0.6%	0.1%	11.3%
BERGEN	NORTHERN VALLEY REGIONAL	NORTHER VALLEY REG OLD TAPPEN HIGH SCHOOL	03-3710-060 09-12		1.3%	0.5%	13.5%
BERGEN	NORTHERN VALLEY REGIONAL	NORTHERN VALLEY REGIONAL HIGH SCHOOL AT DEMAREST	03-3710-050 09-12		1.3%	0.4%	19.6%
BERGEN	PASCACK VALLEY REGIONAL	PASCACK HILLS HIGH SCHOOL	03-3960-040 09-12		1.0%	0.3%	16.4%
BERGEN	PASCACK VALLEY REGIONAL	PASCACK VALLEY HIGH SCHOOL	03-3960-050 09-12		1.5%	0.3%	16.6%
BERGEN	RAMAPO-INDIAN HILL REG	INDIAN HILLS HIGH SCHOOL	03-4300-030 09-12		1.3%	0.0%	16.2%
BERGEN	RAMAPO-INDIAN HILL REG	RAMAPO HIGH SCHOOL	03-4300-050 09-12		0.6%	0.2%	12.8%
BERGEN	RUTHERFORD BORO	RUTHERFORD HIGH SCHOOL	03-4600-050 09-12		2.2%	0.6%	11.4%
CAMDEN	HADDONFIELD BORO	HADDONFIELD MEMORIAL HIGH SCHOOL	07-1900-050 09-12		2.2%	0.0%	14.7%
ESSEX	CALDWELL-WEST CALDWELL	JAMES CALDWELL HIGH SCHOOL	13-0660-050 09-12		2.3%	0.3%	12.7%
ESSEX	GLEN RIDGE BORO	GLEN RIDGE HIGH SCHOOL	13-1750-050 07-12		0.0%	0.2%	5.2%
ESSEX	LIVINGSTON TWP	LIVINGSTON HIGH SCHOOL	13-2730-050 09-12		1.0%	0.6%	12.8%
ESSEX	VERONA BORO	VERONA HIGH SCHOOL	13-5370-050 09-12		0.0%	0.7%	10.9%
ESSEX	WEST ESSEX REGIONAL	WEST ESSEX HIGH SCHOOL	13-5630-050 09-12		2.6%	0.3%	13.8%
HUNTERDON	N HUNT/VOORHEES REGIONAL	NORTH HUNTERDON HIGH SCHOOL	19-3660-050 09-12		1.2%	0.2%	13.6%
MERCER	HOPEWELL VALLEY REGIONAL	HOPEWELL VALLEY CENTRAL HIGH SCHOOL	21-2280-030 09-12		2.3%	0.1%	9.8%
MIDDLESEX	MONROE TWP	MONROE TOWNSHIP HIGH SCHOOL	23-3290-005 09-12		0.0%	1.4%	16.3%
MONMOUTH	RUMSON-FAIR HAVEN REG	RUMSON-FAIR HAVEN REGIONAL HIGH SCHOOL	25-4580-050 09-12		0.8%	0.1%	13.8%
MORRIS	HANOVER PARK REGIONAL	WHIPPANY PARK HIGH SCHOOL	27-1990-070 09-12		1.9%	0.3%	11.4%
MORRIS	KINNELON BORO	KINNELON HIGH SCHOOL	27-2460-050 09-12		1.3%	0.1%	13.0%
MORRIS	MONTVILLE TWP	MONTVILLE TOWNSHIP HIGH SCHOOL	27-3340-010 09-12		2.6%	0.4%	10.8%
MORRIS	MOUNTAIN LAKES BORO	MOUNTAIN LAKES HIGH SCHOOL	27-3460-050 09-12		0.9%	0.1%	17.2%
MORRIS	WEST MORRIS REGIONAL	WEST MORRIS CENTRAL HIGH SCHOOL	27-5660-030 09-12		1.0%	0.4%	15.4%
MORRIS	WEST MORRIS REGIONAL	WEST MORRIS MENDHAM HIGH SCHOOL	27-5660-050 09-12		0.6%	0.4%	13.6%
OCEAN	POINT PLEASANT BEACH BORO	POINT PLEASANT BEACH HIGH SCHOOL	29-4220-050 09-12		0.0%	0.0%	6.8%
OCEAN	POINT PLEASANT BORO	POINT PLEASANT BOROUGH HIGH SCHOOL	29-4210-030 09-12		0.0%	0.2%	13.7%
SOMERSET	BERNARDS TWP	RIDGE HIGH SCHOOL	35-0350-050 09-12		1.4%	0.3%	14.0%
UNION	BERKELEY HEIGHTS TWP	GOVERNOR LIVINGSTON HIGH SCHOOL	39-0310-005 09-12		2.9%	0.1%	11.4%
UNION	WESTFIELD TOWN	WESTFIELD SENIOR HIGH SCHOOL	39-5730-050 09-12		2.6%	0.2%	17.3%



State of New Jersey

2012-13

19-3660-060

VOORHEES HIGH SCHOOL
256 COUNTY ROUTE 513

OVERVIEW

HUNTERDON

N HUNT/VOORHEES REGIONAL

GRADE SPAN 09-12

GLEN GARDNER, NEW JERSEY 08826-9529

This school's academic performance **is very high when compared** to schools across the state. Additionally, its academic performance **is very high when compared** to its peers. This school's college and career readiness **is high when compared** to schools across the state. Additionally, its college and career readiness **is about average when compared** to its peers. This school's graduation and post-secondary performance **is high when compared** to schools across the state. Additionally, its graduation and post-secondary readiness **lags in comparison** to its peers.

Performance Areas	Peer Percentile	Statewide Percentile	Percent of Targets Met
Academic Achievement	99	93	100%
College & Career Readiness	41	70	80%
Graduation and Post-Secondary	34	67	100%

Improvement Status

N/A

Rationale

N/A

Very High Performance is defined as being **equal to or above the 80th percentile**.

High Performance is defined as being **between the 60th and 79.9th percentiles**.

Average Performance is defined as being **between the 40th and 59.9th percentiles**.

Lagging Performance is defined as being **between the 20th and 39.9th percentiles**.

Significantly Lagging Performance is defined as being **equal to or below the 19.9th percentile**.

Peer Schools are schools that have similar grade levels and students with similar demographic characteristics, such as the percentage of students qualifying for Free/Reduced Lunch, Limited English Proficiency programs or Special Education programs.

Academic Achievement

This school outperforms **93%** of schools statewide as noted by its statewide percentile and **99%** of schools educating students with similar demographic characteristics as noted in its peer school percentile in the performance area of Academic Achievement. Additionally, this school is meeting **100%** of its performance targets in the area of Academic Achievement.



Academic Achievement measures the content knowledge students have in language arts literacy and math. For high schools, this includes measures of the school's proficiency rate on both the Language Arts Literacy and Math sections of the New Jersey High School Proficiency Assessment (HSPA). A proficiency rate is calculated by summing the count of students who scored either proficient or advanced proficient on the assessment and dividing by the count of valid test scores.

College and Career Readiness

This school outperforms **70%** of schools statewide as noted by its statewide percentile and **41%** of schools educating students with similar demographic characteristics as noted in its peer school percentile in the performance area of College and Career Readiness. Additionally, this school is meeting **80%** of its performance targets in the area of College and Career Readiness.



College and Career Readiness measures the degree to which students are demonstrating behaviors that are indicative of future attendance and/or success in college and careers. For high schools, this includes measures of participation in college readiness tests such as the SAT, ACT or PSAT and in rigorous coursework as defined by participation in AP or IB courses in English, math, social studies and science.

Graduation and Post-Secondary

This school outperforms **67%** of schools statewide as noted by its statewide percentile and **34%** of schools educating students with similar demographic characteristics as noted in its peer school percentile in the performance area of Graduation and Post-Secondary. Additionally, this school is meeting **100%** of its performance targets in the area of Graduation and Post-Secondary.



Graduation and Postsecondary measures the rate at which students who begin high school four years earlier graduate within four years. Also included is a measure of the rate at which students in a particular school drop out of school.

State of New Jersey

2012-13

19-3660-060

VOORHEES HIGH SCHOOL

256 COUNTY ROUTE 513

GLEN GARDNER, NEW JERSEY 08826-9529

DEMOGRAPHIC INFORMATION

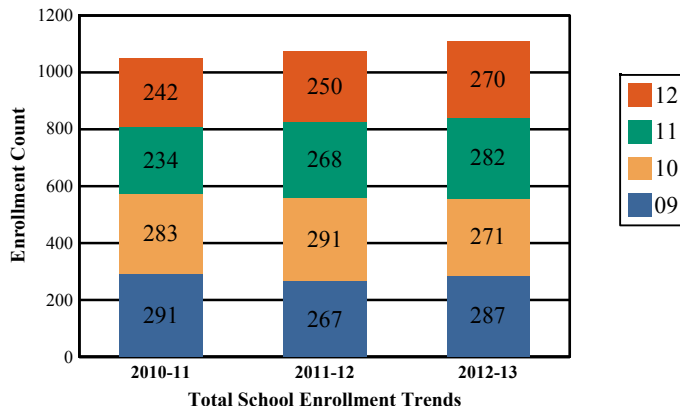
HUNTERDON

N HUNT/VOORHEES REGIONAL

GRADE SPAN 09-12

Enrollment by Grade, in Full Time Equivalent

This graph presents the count of students who were 'on roll' by grade in October of each school year.



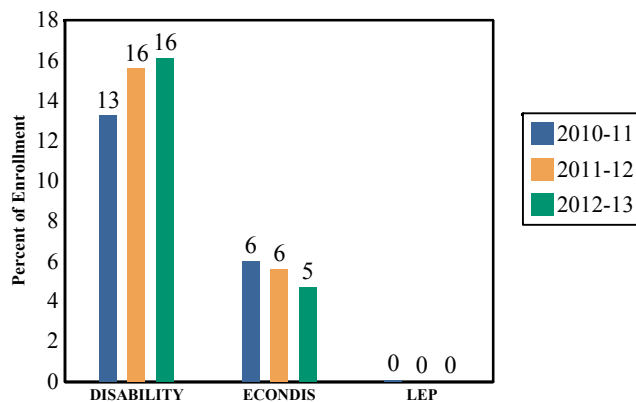
Total School Enrollment Trends

Note: "UG" represents the count of students who are 'on roll' in this school but who are educated in ungraded classrooms, meaning that the classrooms may contain students from multiple grade levels.

Total School Enrollment in Full Time Equivalent

2011-12	1,076
2012-13	1,109

Enrollment Trends by Program Participation



Current Year Enrollment by Program Participation

2012-2013	Count of Students	Percentage of Enrollment
Students with Disability	179	16%
Economically Disadvantaged Students	52	4.7%
Limited English Proficient Students	0	0.0%

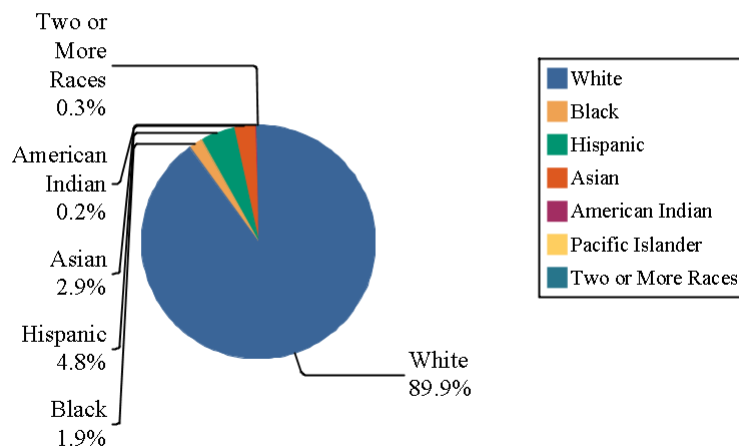
Language Diversity

This table presents the percentage of students who primarily speak each language in their home.

2012-13	Percent
English	97.9%
Spanish	0.9%
Portuguese	0.2%
Hungarian	0.1%
Afrikaans	0.1%
Norwegian Bokmål	0.1%
Other	0.8%

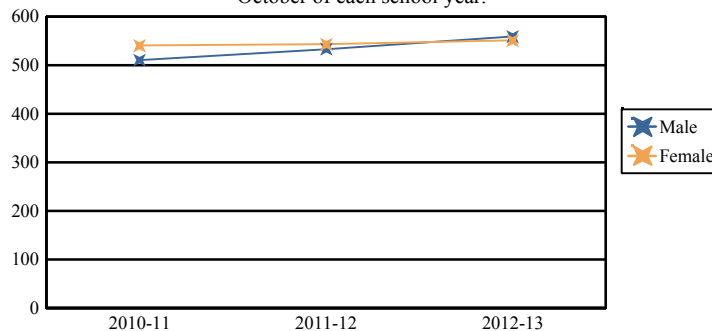
Enrollment by Ethnic/Racial Subgroup

This graph presents the percentages of enrollment for each subgroup defined by the No Child Left Behind Act of 2001



Enrollment by Gender

This graph presents the count of students by gender who were 'on roll' (FTE) in October of each school year.



	Male	Female
2010-11	510	540
2011-12	533	543
2012-13	559	551



State of New Jersey

2012-13

19-3660-060

VOORHEES HIGH SCHOOL
256 COUNTY ROUTE 513

ACADEMIC ACHIEVEMENT

HUNTERDON

N HUNT/VOORHEES REGIONAL

GRADE SPAN 09-12

GLEN GARDNER, NEW JERSEY 08826-9529

Academic Achievement measures the content knowledge students have in Language Arts Literacy and Math. In high schools, this includes the outcomes of the New Jersey High School Proficiency Assessment (HSPA). The first column - Schoolwide Performance - in the table below includes measures of the total schoolwide proficiency rate in both Language Arts Literacy and Math across multiple administrations of the assessment. The second column - Peer School Percentile - indicates where the school's proficiency rate compares to its group of peer schools. For example, a school that has a peer school percentile of 65 has a proficiency rate that is higher than 65% of its peer schools. The third column - Statewide Percentile - indicates where the school's proficiency rate compares to schools across the state. For example, a school that has a statewide percentile of 30 has a proficiency rate that is higher than 30% of all schools with HSPA scores statewide. The last column - Percent of Targets Met - presents the percentage of progress targets met as defined by the NJDOE's NCLB waiver.

The Summary row presents the averages of the peer school percentiles, the average of statewide percentiles and the percentage of statewide targets met.

Academic Achievement Indicators	Schoolwide Performance	Peer Percentile	State Percentile	Percent of Targets Met
HSPA Language Arts Proficiency and above	100%	97	90	100%
HSPA Math Proficiency and above	99%	100	95	100%
SUMMARY - Academic Achievement		99	93	100%

NCLB Progress Targets - Language Arts Literacy

This table presents the Progress Targets as uniquely calculated for each subgroup in each school under NJDOE's NCLB waiver. The methodology - as defined by the United States Department of Education - is calculated so that each subgroup will halve the gap between their 2011 proficiency rate and 100% proficiency by 2017.

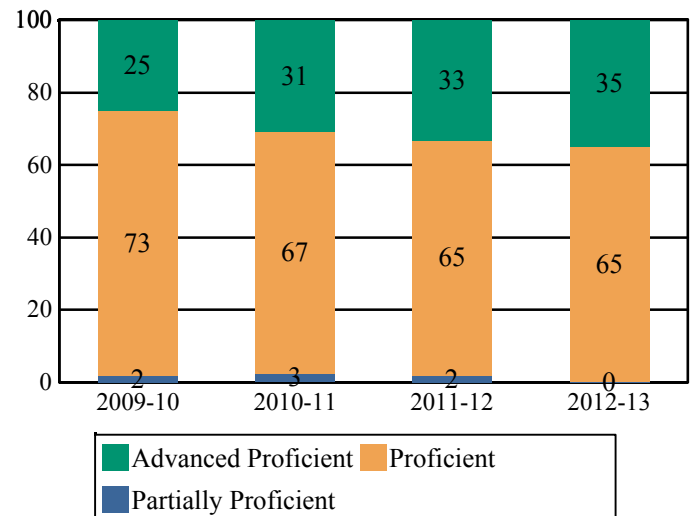
Subgroups	Total Valid Scores	Pass Rate	Target	Met Target?
Schoolwide	277	99.6	90	YES
White	253	100	90	YES
Black	-	-		--
Hispanic	-	-		--
American Indian	-	-		--
Asian	-	-		--
Two or More Races	-	-		--
Students with Disability	48	97.9	88.8	YES
Limited English Proficient Students	-	-		--
Economically Disadvantaged Students	-	-		--

YES* = Met Progress Target (Confidence Interval Applied)

Data is presented for subgroups when the count is high enough under NCLB suppression rules.

Proficiency Trends - Language Arts Literacy

This graph presents the percentage of students who scored in the Advanced Proficient, Proficient and Partially Proficient categories of the statewide Language Arts Literacy assessment over the prior four years.



State of New Jersey

2012-13

19-3660-060

VOORHEES HIGH SCHOOL
256 COUNTY ROUTE 513

ACADEMIC ACHIEVEMENT

HUNTERDON

N HUNT/VOORHEES REGIONAL

GRADE SPAN 09-12

GLEN GARDNER, NEW JERSEY 08826-9529

NCLB Progress Targets - Math

This table presents the Progress Targets as uniquely calculated for each subgroup in each school under NJDOE's NCLB waiver. The methodology - as defined by the United States Department of Education - is calculated so that each subgroup will halve the gap between their 2011 proficiency rate and 100% proficiency by 2017.

Subgroups	Total Valid Scores	Pass Rate	Target	Met Target?
Schoolwide	277	99.2	90	YES
White	253	99.6	90	YES
Black	-	-		--
Hispanic	-	-		--
American Indian	-	-		--
Asian	-	-		--
Two or More Races	-	-		--
Students with Disability	48	97.9	90	YES
Limited English Proficient Students	-	-		--
Economically Disadvantaged Students	-	-		--

YES* = Met Progress Target(Confidence Interval Applied)

Data is presented for subgroups when the count is high enough under NCLB suppression rules.

Proficiency Outcomes - Biology

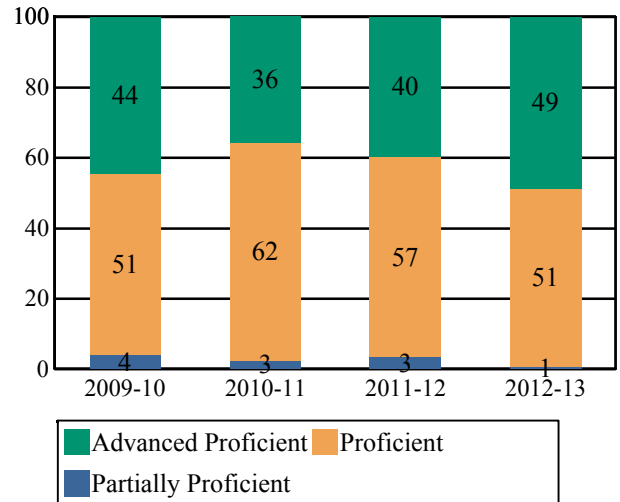
This table presents the percentage of students who scored in the Advanced Proficient, Proficient and Partially Proficient categories of the New Jersey Biology Competency Test (NJBCT) in the latest school year.

Subgroups	Advanced	Proficient	Partially Proficient
Schoolwide	43%	43%	15%
White	45%	43%	13%
Black	-	-	-
Hispanic	-	-	-
American Indian	-	-	-
Asian	-	-	-
Two or More Races	-	-	-
Students with Disability	13%	32%	55%
Limited English Proficient Students	-	-	-
Economically Disadvantaged Students	-	-	-

Data is presented for subgroups when the count is high enough under NCLB suppression rules.

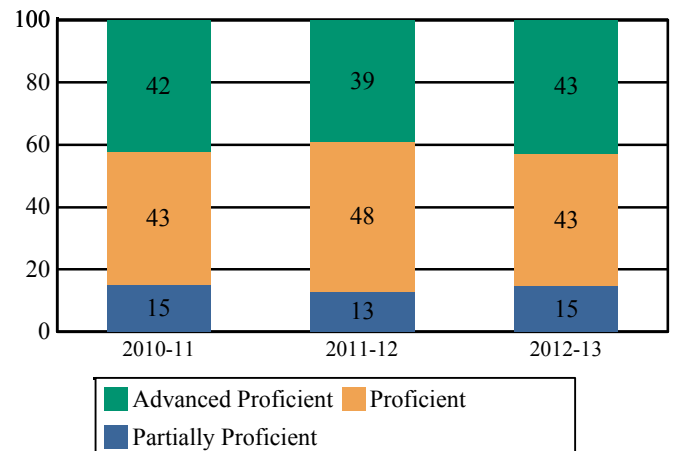
Proficiency Trends - Math

This graph presents the percentage of students who scored in the Advanced Proficient, Proficient and Partially Proficient categories of the statewide Math assessment over the prior four years.



Proficiency Trends - Biology

This graph presents the percentage of students who scored in the Advanced Proficient, Proficient, and Partially Proficient categories of the Biology Competency Test over the last two years.



State of New Jersey

2012-13

19-3660-060

COLLEGE AND CAREER READINESS

HUNTERDON

VOORHEES HIGH SCHOOL

256 COUNTY ROUTE 513

N HUNT/VOORHEES REGIONAL

GRADE SPAN 09-12

GLEN GARDNER, NEW JERSEY 08826-9529

Students in high schools begin to demonstrate college readiness behaviors long before they actually graduate from high school. Among those behaviors are taking college entrance exams and challenging themselves with rigorous course work. The table below presents five such indicators: the percentage of students enrolled in the 12th grade who took the SAT or ACT, the percentage of 10th and 11th graders who took the PSAT, the percentage of students who scored above the SAT benchmark of 1550, the percentage of 11th and 12th graders who took at least one AP or IB test in English, math, social studies or science, and the percentage of those AP or IB tests that were scored a 3 or higher.

The first column - Schoolwide Performance - represents the outcomes for these particular indicators in the school. The second column - Peer School Percentile - indicates how the school's performance compares to its group of peer schools. For example, a school whose peer school percentile is 65 in SAT participation has a higher SAT Participation than 65% of its peer group. The third column - Statewide Percentile - indicates how the school's performance compares to schools across the state. The fourth column - Statewide Target - provides the statewide targets for each of these indicators. The last column - Met Target? - indicates whether the School Performance met or exceeded the statewide target.

The Summary row presents the averages of the peer school percentiles, the average of statewide percentiles and the percentage of statewide targets met.

College and Career Readiness Indicators	Schoolwide Performance	Peer Percentile	Statewide Percentile	Statewide Target	Met Target?
Percent of Students Participating in SAT or ACT	86%	16	63	80%	YES
Percent of Students Participating in PSAT	46%	10	45	60%	NO
Percent of Students Scoring Above 1550 on SAT	68%	71	88	40%	YES
Percent of Students Taking at least one AP Test or IB Test in English, Math, Social Studies or Science	38%	81	90	35%	YES
Percent of AP Tests ≥ 3 or IB Test ≥ 4 in English, Math, Social Studies or Science	79%	26	64	75%	YES
Summary		41	70		80%

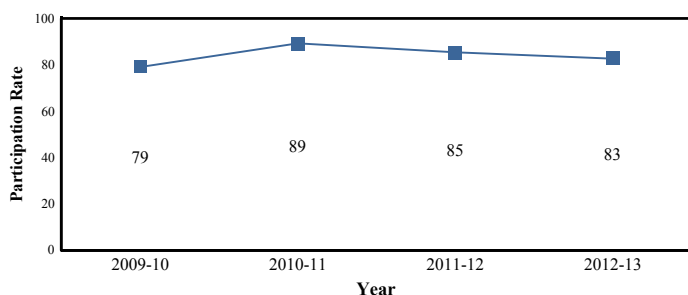
College Readiness Test Participation

The first column of the table below presents the percentage of students enrolled in the 12th grade who took the SAT or ACT and the percentage of students enrolled in 10th and 11th grade who took the PSAT. The second column provides the average across the school's peer group for these two metrics.

2012-13 Percent of Students	School	Peer Avg.	State Avg.
Participating in SAT	82.7%	89.9%	75.3%
Participating in ACT	28.6%		20.6%
Participating in PSAT	46.2%	64.7%	52.5%

Participation Trends - SAT Testing

This graph presents the participation rate in the SAT over the last four years.



AP/IB Participation - 'Unique' Students

The table below presents the proportion of 'unique' students enrolled in at least 11th and 12th grade i.e., each student is counted once regardless of how many AP or IB courses he/she may take. The table also presents the proportion of how many 'unique' students took at least one AP or IB test to the school's enrollment in 11th and 12th grade.

2012-13 Percent of Students Taking	School	Peer Avg.	State Avg.
One or More Course	57.0%	45.1%	32.8%
One or More Test	51.5%	40.2%	26.8%
At least one AP or IB Test in English, Math, Social Studies or Science	38.3%	30.3%	18.9%

Note: Students who are enrolled in AP/IB coursework or take AP/IB tests in grades other than 11th and 12th are included in the numerator of this calculation.

AP /IB Test Results

This table presents the percentage of all AP/IB tests taken by students enrolled in the school that were scored AP ≥ 3 and scored IB ≥ 4 .

2012-13	School	Peer Avg.	State Avg.
Percent of AP Tests ≥ 3 or IB Test ≥ 4	81.0%	83.9%	74.6%
Percent of Scores in AP ≥ 3 or IB ≥ 4 in English, Math, Social Studies or Science	78.7%	85.5%	75.1%

COLLEGE AND CAREER READINESS

HUNTERDON

N HUNT/VOORHEES REGIONAL

GRADE SPAN 09-12

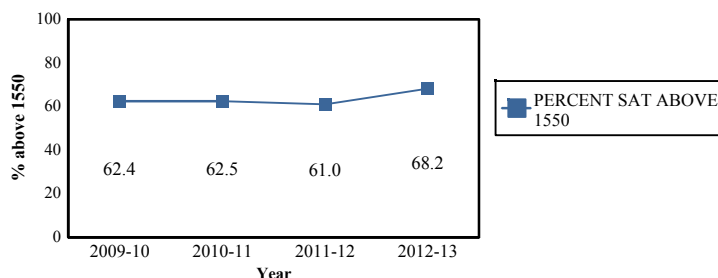
Scholastic Assessment Test (SAT) Results

This table presents the percentage of students who achieved a composite SAT score of 1550 or higher. The SAT benchmark score of 1550 (Critical Reading, Mathematics and Writing Score combined) indicates a 65 percent likelihood of achieving a B- average or higher during the first year of college, which in turn has been found by the College Board's research to be indicative of a high likelihood of college success and completion.

2012-13	School	Peer Avg.	State Avg.
Percent of Students Scoring Above 1550 on SAT	68.2%	58.6%	43.9%

SAT Benchmark Trends

This chart presents the percentage of students who achieved a composite SAT score of 1550 or higher over the past four years.



Composite SAT Score

This chart presents the average composite SAT score from the last academic year for students enrolled in this school as well as the average scores achieved in Critical Reading, Mathematics and Writing. The averages from this school's peer group are also presented.

2012-13	School	Peer Avg.	State Avg.
Composite SAT Score	1,654	1,654	1,512
Critical Reading	547	541	495
Mathematics	568	568	521
Writing	539	545	496

This chart presents the scores achieved in Critical Reading, Mathematics and Writing by the students at the 25th percentile, the 50th percentile and the 75th percentile of the school's distribution of SAT scores.

2012-13	Critical Reading	Mathematics	Writing
75th Percentile	610	650	600
50th Percentile	540	560	530
25th Percentile	480	500	480

AP/IB Courses Offered

This table presents the count of students enrolled in each AP/IB course offered in this school in the first column. The second column presents the count of tests taken in each AP/IB course. The numbers may not match as some students do not take the test in the same year as they take the course and some students may take the course without taking the test or vice versa.

AP/IB Course Name	Students Enrolled	Students Tested
AP Biology	79	78
AP Environmental Science	69	49
AP Psychology	64	57
AP U.S. History	55	55
AP Calculus AB	48	42
AP Spanish Language	47	37
AP English Language and Composition	42	42
AP Chemistry	32	32
AP Calculus BC	29	29
AP Physics C	24	23
AP English Literature and Composition	24	14
AP Physics B	20	19
AP Statistics	17	15
AP World History	16	16
AP Latin (Virgil, Catullus and Horace)	11	11
AP Music Theory	9	9
AP Studio Art—General Portfolio	6	3
AP Studio Art—Drawing Portfolio	4	3



State of New Jersey

2012-13

19-3660-060

COLLEGE AND CAREER READINESS

HUNTERDON

N HUNT/VOORHEES REGIONAL

GRADE SPAN 09-12

VOORHEES HIGH SCHOOL

256 COUNTY ROUTE 513

GLEN GARDNER, NEW JERSEY 08826-9529

Visual and Performing Arts

The chart below contains the percentage of students who were enrolled in at least one Dance, Drama/Theater, Music or Visual Arts class in this school. The last row shows the percentage of students who were enrolled in any Visual and Performing Arts classes in the school.

Percent of Students Enrolled	School	State
Dance	N/R	1.8%
Drama/Theater	N/R	3.5%
Music	27.6%	16.7%
Visual Arts	36.1%	30.2%
Total: All Visual and Performing Arts	58.4%	47.3%

N/R - Data Not Reported



State of New Jersey

2012-13

19-3660-060

VOORHEES HIGH SCHOOL
256 COUNTY ROUTE 513

GRADUATION AND POSTSECONDARY

HUNTERDON

N HUNT/VOORHEES REGIONAL

GRADE SPAN 09-12

GLEN GARDNER, NEW JERSEY 08826-9529

This section of the performance report presents data about graduation, dropout and post-secondary attendance. The graduation rate is calculated according to the NCLB Cohort methodology as required by the United States Department of Education. Dropout rates are calculated from student-level data submitted by districts for students officially classified as dropouts. The dropout rate is the count of students who dropout in an academic year divided by the school's total enrollment.

The first column - Schoolwide Performance - represents the outcomes for these particular indicators in this school. The second column - Peer School Percentile - indicates how the school's performance compares to its group of peer schools. For example, a school whose peer percentile is 65 in Graduation Rate has a higher Graduation Rate than 65% of its peer group. The third column - Statewide Percentile - indicates how the school's performance compares to schools across the state. The fourth column - Statewide Target - provides the statewide targets for each of these indicators. The Statewide Target for Graduation Rate was established pursuant to NJDOE's NCLB Accountability Workbook. The last column - Met Target - indicates whether the School Performance met or exceeded the statewide target.

The Summary row presents the averages of the peer school percentile, the average of statewide percentile and the percentage of statewide targets met.

Graduation & Post Secondary Indicators	Schoolwide Performance	Peer Percentile	Statewide Percentile	Statewide Targets	Met Target
Overall Graduation Rate	97%	49	81	75%	YES
Dropout Rate	0.4%	19	53	2%	YES
SUMMARY - Graduation & Post-Secondary		34	67		100%

Graduation Rate by Subgroup

This table presents for all NCLB-identified subgroups the "4-year Adjusted Graduation Rate." This rate calculates the percentage of students who are awarded a regular, high school diploma within four years of becoming a first-time ninth grader. The rate is adjusted to account for students who 'transfer-in' and for students who are verified as 'transfers-out'.

	School	State Target
Schoolwide	97%	75%
White	97%	
Black	-	
Hispanic	-	
American Indian	-	
Asian	-	
Native Hawaiian	-	
Two or More Races	-	
Students with Disability	87%	
Limited English Proficient Students	-	
Economically Disadvantaged Students	-	

Dropout Rate by Subgroup

This table presents for all NCLB-identified subgroups the Dropout rate. This rate calculates the percentage of students who are classified as dropouts divided by the school's total enrollment and by each subgroup enrollment.

	School	State Target
Schoolwide	.4%	2%
White	.5%	
Black	-	
Hispanic	0%	
American Indian	-	
Asian	0%	
Native Hawaiian	-	
Two or More Races	-	
Students with Disability	1%	
Economically Disadvantaged Students	3.6%	
Limited English Proficiency	-	

State of New Jersey

2012-13

19-3660-060

VOORHEES HIGH SCHOOL

256 COUNTY ROUTE 513

GLEN GARDNER, NEW JERSEY 08826-9529

GRADUATION AND POSTSECONDARY

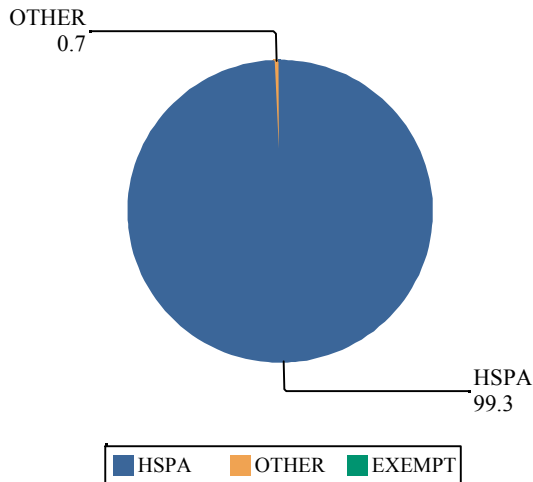
HUNTERDON

N HUNT/VOORHEES REGIONAL

GRADE SPAN 09-12

Graduation Pathway Rates

This chart presents the percentage of high school graduates who graduated by passing both sections of the HSPA, who were exempt from passing the HSPA, or who demonstrated proficiency through an alternative pathway such as through the Alternative High School Assessment, achievement of the 'Just Proficient Mean' or an appeal process.



Extended Year Graduation Rate

The chart below presents the 4-year and 5-year graduation rate for the prior school year's cohort in addition to the 4-year graduation rate for last year's cohort.

Class of	4-year Rate	5-year Rate
2011	91%	95%
2012	96%	96%
2013	97%	

Postsecondary Enrollment Rates

This chart presents the enrollment rates of this school's high school graduates, 16-months after high school graduation. The data is from the National Student Clearinghouse which reports that it collects student-level enrollment data from 95% of Institutions of Higher Education nationwide.

The last columns indicate, for the schoolwide total and each subgroup, the percentage of postsecondary enrollees that were enrolled in either a 2 year or a 4 year institution.

	Percent Enrolled	Percent in 2 Year	Percent in 4 Year
Schoolwide	81%	26.6%	73.4%
White	81.7%	25.6%	74.4%
Black	-	-	-
Hispanic	-	-	-
Asian	-	-	-
American Indian	-	-	-
Native Hawaiian	-	-	-
Two or More Races	-	-	-
Students with Disability	-	-	-
Limited English Proficient Students	-	-	-
Economically Disadvantaged Students	-	-	-



State of New Jersey

2012-13

19-3660-060

WITHIN SCHOOL ACHIEVEMENT GAP

HUNTERDON

N HUNT/VOORHEES REGIONAL

GRADE SPAN 09-12

VOORHEES HIGH SCHOOL

256 COUNTY ROUTE 513

GLEN GARDNER, NEW JERSEY 08826-9529

This section of the performance report presents data about the achievement gap that exists within a school - as measured by the difference between the students' scale scores at the 25th and 75th percentile in the school, the so-called Interquartile Range (IQR). Taken together with an understanding of the overall and average achievement levels in the school, the IQR furthers an understanding of the range of student outcomes that exist in a school. A school gap smaller than the state gap indicates that the school's range of student outcomes is narrower than the state's while a school gap larger than the state gap indicates that the school's range of student outcomes is larger than the state's.

High School

HSPA Language Arts 25th %ile vs 75th%ile

This table presents the scale scores associated with students at the bottom (0th percentile), the 25th percentile, the 50th percentile, the 75th percentile and the top (99th percentile) of school's distribution.

Percentile	School Scaled Score	State Scaled Score
99th	272	291
75th	254	247
50th	244	237
25th	233	222
0th	158	100

	Scaled Score Gap - School	Scaled Score Gap - State
25th vs 75th Gap	21	25

Grade Level - 11

HSPA Math 25th %ile vs 75th%ile

This table presents the scale scores associated with students at the bottom (0th percentile), the 25th percentile, the 50th percentile, the 75th percentile and the top (99th percentile) of school's distribution.

Percentile	School Scaled Score	State Scaled Score
99th	273	300
75th	259	251
50th	249	231
25th	231	209
0th	158	136

	Scaled Score Gap - School	Scaled Score Gap - State
25th vs 75th Gap	28	42



State of New Jersey

2012-13

19-3660-060

VOORHEES HIGH SCHOOL

256 COUNTY ROUTE 513

GLEN GARDNER, NEW JERSEY 08826-9529

SCHOOL CLIMATE

HUNTERDON

N HUNT/VOORHEES REGIONAL

GRADE SPAN 09-12

Length of School Day

This table presents the amount of time a school is in session for a typical student on a normal school day.

	School
2012-13	7 Hrs. 30 Mins.

Student Suspension Rate

This table presents the percentage of students who were suspended one or more times during the school year.

	School
2012-13	5.1%

Instructional Time

This table presents the amount of time that a typical student is engaged in instructional activities under the supervision of a certified teacher.

2012-13	School
Full Time	6 Hrs. 40 Mins.
Shared Time	3 Hrs. 20 Mins.

Student Expulsions

This table presents the number of students who were expelled from the school and district during the school year.

	School
2012-13	0

Student to Staff Ratio

This table presents the count of students per faculty member or administrator in the school. All staff are counted in full-time equivalents.

2012-13	School
Faculty	9
Administrators	370

SCHOOL PEER GROUP

Voorhees High School

19-3660-060

This table presents the list of peer schools in alphabetical order by county name that was created specifically for this school (highlighted in yellow). Peer schools are drawn from across the state and represent schools that have similar grade configurations and that are educating students of similar demographic characteristics, as measured by enrollment in Free/Reduced Lunch Programs, Limited English Proficiency or Special Education Programs.

COUNTY NAME	DISTRICT NAME	SCHOOL NAME	CDS CODE	GRAD ESPAN	FRPL	LEP	SpED
BERGEN	FAIR LAWN BORO	FAIR LAWN HIGH SCHOOL	03-1450-050 09-12	5.5%	0.6%	17.2%	
BERGEN	PARK RIDGE BORO	PARK RIDGE HIGH SCHOOL	03-3940-050 07-12	4.0%	0.6%	14.7%	
BERGEN	RAMSEY BORO	RAMSEY HIGH SCHOOL	03-4310-050 09-12	3.7%	0.3%	16.3%	
BERGEN	RIDGEWOOD VILLAGE	RIDGEWOOD HIGH SCHOOL	03-4390-050 09-12	1.4%	1.1%	13.8%	
BERGEN	RIVER DELL REGIONAL	RIVER DELL REGIONAL HIGH SCHOOL	03-4405-050 09-12	1.9%	1.1%	15.5%	
BERGEN	RUTHERFORD BORO	RUTHERFORD HIGH SCHOOL	03-4600-050 09-12	2.2%	0.6%	11.4%	
BERGEN	WALDWICK BORO	WALDWICK HIGH SCHOOL	03-5410-030 09-12	1.3%	2.6%	15.0%	
CHARTERS	HOBOKEN CS	HOBOKEN CHARTER SCHOOL	80-6720-930 KG-12	5.4%	0.0%	13.6%	
ESSEX	CEDAR GROVE TWP	CEDAR GROVE HIGH SCHOOL	13-0760-050 09-12	4.8%	0.2%	10.6%	
ESSEX	MILLBURN TWP	MILLBURN HIGH SCHOOL	13-3190-050 09-12	1.3%	1.4%	14.5%	
HUNTERDON	DELAWARE VALLEY REGIONAL	DELAWARE VALLEY REGIONAL HIGH SCHOOL DISTRICT	19-1050-040 09-12	5.0%	0.0%	12.4%	
HUNTERDON	N HUNT/VOORHEES REGIONAL	VOORHEES HIGH SCHOOL	19-3660-060 09-12	4.6%	0.0%	14.2%	
MERCER	ROBBINSVILLE TWP	ROBBINSVILLE HIGH SCHOOL	21-5510-030 09-12	3.6%	0.1%	11.7%	
MERCER	W WINDSOR-PLAINSBORO REG	WEST WINDSOR-PLAINSBORO HIGH SCHOOL NORTH	21-5715-025 09-12	4.5%	0.0%	12.8%	
MONMOUTH	FREEHOLD REGIONAL	MANALAPAN HIGH SCHOOL	25-1650-070 09-12	7.1%	0.0%	8.6%	
MONMOUTH	FREEHOLD REGIONAL	MARLBORO HIGH SCHOOL	25-1650-080 09-12	4.4%	0.0%	10.1%	
MONMOUTH	HOLMDEL TWP	HOLMDEL HIGH SCHOOL	25-2230-020 09-12	2.6%	1.1%	10.9%	
MONMOUTH	MIDDLETOWN TWP	MIDDLETOWN HIGH SCHOOL SOUTH	25-3160-053 09-12	5.5%	0.1%	14.6%	
MONMOUTH	SHORE REGIONAL	SHORE REGIONAL HIGH SCHOOL	25-4760-050 09-12	3.9%	0.0%	11.0%	
MONMOUTH	UPPER FREEHOLD REGIONAL	ALLENTOWN HIGH SCHOOL	25-5310-050 09-12	6.2%	0.2%	13.1%	
MORRIS	HANOVER PARK REGIONAL	HANOVER PARK HIGH SCHOOL	27-1990-050 09-12	3.4%	1.0%	13.3%	
MORRIS	MONTVILLE TWP	MONTVILLE TOWNSHIP HIGH SCHOOL	27-3340-010 09-12	2.6%	0.4%	10.8%	
MORRIS	MORRIS HILLS REGIONAL	MORRIS KNOLLS HIGH SCHOOL	27-3370-060 09-12	6.7%	0.2%	17.4%	
MORRIS	PEQUANNOCK TWP	PEQUANNOCK TOWNSHIP HIGH SCHOOL	27-4080-050 09-12	4.4%	0.4%	13.6%	
MORRIS	RANDOLPH TWP	RANDOLPH HIGH SCHOOL	27-4330-050 09-12	4.4%	0.5%	15.2%	
MORRIS	SCH DIST OF THE CHATHAMS	CHATHAM HIGH SCHOOL	27-0785-010 09-12	2.7%	0.6%	15.1%	
SOMERSET	MONTGOMERY TWP	MONTGOMERY HIGH SCHOOL	35-3320-030 09-12	3.3%	0.5%	10.5%	
SOMERSET	WATCHUNG HILLS REGIONAL	WATCHUNG HILLS REGIONAL HIGH SCHOOL	35-5550-050 09-12	3.1%	0.3%	15.1%	
SUSSEX	SPARTA TWP	SPARTA HIGH SCHOOL	37-4960-050 09-12	3.7%	0.3%	11.0%	
UNION	CRANFORD TWP	CRANFORD HIGH SCHOOL	39-0980-030 09-12	3.6%	0.1%	17.0%	
UNION	NEW PROVIDENCE BORO	NEW PROVIDENCE HIGH SCHOOL	39-3560-050 09-12	3.6%	0.7%	12.6%	