

The New Jersey
**CONSTRUCTION
REPORTER**

JUNE 2012 DATA

CHRIS CHRISTIE, Governor
STATE OF NEW JERSEY

RICHARD E. CONSTABLE III, Commissioner
DEPARTMENT OF COMMUNITY AFFAIRS

EDWARD M. SMITH, Director
DIVISION OF CODES AND STANDARDS

DISTRIBUTED BY THE

New Jersey Department of
COMMUNITY AFFAIRS
DIVISION OF CODES AND STANDARDS
101 South Broad Street,
PO Box 802
Trenton, NJ 08625-0802
www.nj.gov/dca/divisions/codes/reporter/



TABLE OF CONTENTS

Contents	Description	Pages
INTRODUCTION		
Highlights	Analysis of data in this month's report	i-iii
Foreword	Background information	1
Exhibits A - C	Definition of terms used throughout the tables	2 - 4
RESIDENTIAL CONSTRUCTION		
Tables 1 - 6	Housing units authorized and certified, housing units demolished, monthly and year-to-date figures	5 - 14
OFFICE SPACE		
Tables 7 - 8	Square feet of office space authorized and certified, monthly and year-to-date figures	15 - 19
RETAIL SPACE		
Tables 9 - 10	Square feet of retail space authorized and certified, monthly and year-to-date figures	20 - 24
DOLLAR AMOUNTS		
Tables 11 - 13	Dollar amount of construction authorized by county and top municipalities, monthly and year to date; dollar amount of construction authorized by use group and permit type, New Jersey totals, monthly and year to date; average new house prices by county	25 - 30
NEW HOUSE PRICES		
Table 14	Price of new houses issued a warranty, by county	31
MUNICIPAL SUMMARY DATA		
	Housing units authorized and certified, office and retail space authorized, and dollar amount of construction authorized by municipality, monthly totals	MSD-1 - MSD-12
ILLUSTRATIONS		
Map 1	Housing units authorized by municipality, year to date	9
Map 2	Office space authorized by municipality, year to date	18
Map 3	Retail space authorized by municipality, year to date	23
Map 4	Estimated cost of construction authorized by municipality, year to date	28

JUNE 2012 HIGHLIGHTS

- The dollar amount of construction authorized by building permits in June was \$1.142 billion. The last time monthly activity exceeded this amount was September 2008.
- Residential work totaled \$530 million, accounting for 46.4 percent of all authorized activity. Office, retail, and other nonresidential construction totaled \$612.2 million (53.6 percent). 554 of New Jersey's 566 municipalities reported.
- New homes accounted for 24.3 percent of all work in June. 1,484 new dwellings were authorized. This was the highest monthly total since April 2008, when there were 1,861 authorized dwellings.
- Jersey City in Hudson County had \$70.1 million of construction, more than any other municipality in June. Nearly \$30 million was from a permit update for work begun in November 2011 on a mixed-use development with 139 apartments. The construction office also issued a permit for a new, 422-unit condominium project, Liberty Harbor North. Jersey City had 474 authorized dwellings in June, more than any other municipality.
- Another Hudson County municipality, Weehawken, had \$62.9 million of work. Nearly all of this was two permit updates for new apartments.
- Brick Township in Ocean County had \$42.4 million of construction. A three-story hospital addition and an expansion of an existing Wal-Mart accounted for most of this.

Mid-Year Review

- Major construction indicators are up for the first half of 2012 compared to this time last year.
- The dollar amount of work authorized was \$5.479 billion between January and June 2012. This was \$196.4 million more than that amount for the first six months of 2011, an increase of 3.6 percent.
- Authorized housing is up by 1,147 units, an increase of 16.9 percent.

Major Construction Indicators, New Jersey: Six-Month Comparison				
Period	Estimated Cost of Construction	Authorized Housing Units	Authorized Office Space (square feet)	Authorized Retail Space (square feet)
Jan – June 2012	\$5,479,391,404	6,787	3,696,572	892,955
Jan – June 2011	\$5,283,021,139	5,640	2,436,159	845,638
Jan – June 2010	\$4,717,038,827	5,416	2,526,258	874,570
Jan – June 2009	\$4,786,597,993	5,097	1,601,287	1,048,198
Jan – June 2008	\$7,314,157,255	9,304	4,275,268	3,946,329
Jan – June 2007	\$7,436,971,200	12,852	4,364,617	2,256,732
Jan – June 2006	\$7,582,375,400	17,139	6,034,350	1,954,303
Jan – June 2005	\$7,081,730,877	18,587	5,106,005	3,158,251
Jan – June 2004	\$6,449,484,680	18,075	5,510,963	1,816,673
Jan – June 2003	\$5,331,838,015	15,060	4,572,969	3,116,205
Jan – June 2002	\$5,530,176,347	15,026	4,717,733	4,255,238
Jan – June 2001	\$6,157,204,386	16,834	9,771,589	3,244,421
Jan – June 2000	\$4,798,965,724	16,849	5,972,159	2,233,888
Jan – June 1999	\$4,994,367,961	16,809	5,254,870	3,596,066
Jan – June 1998	\$4,121,149,094	15,139	4,780,300	4,128,120
Jan – June 1997	\$3,926,007,970	12,824	3,527,402	2,622,495
<i>Change, 2011–12</i>				
2011-2012	\$196,370,265	1,147	1,260,413	47,317
Percent Change	3.6%	16.9%	34.1%	5.3%
<i>Change, 2010–11</i>				
2010-2011	\$565,982,312	224	-90,099	-28,932
Percent Change	12.0%	4.1%	-3.6%	-3.3%
Source: N.J. Department of Community Affairs, 8/7/12				

- Office space is up by nearly 1.3 million square feet for a 34.1 percent increase; new retail space grew more modestly, 47,000 more square feet than this time last year (5.3 percent).
- Jersey City and Newark reported the most work in the first half of 2012. Jersey City had \$164.2 million of construction. Newark had \$160.5 million.
- About 60 percent of all the work in Jersey City was for new dwellings or repairs and additions to existing ones. The City's construction office issued building permits for 537 new units.
- Two of the bigger developments in the City of Newark were for expansion by area universities. The New Jersey Institute of Technology began work on a mixed-use building with student housing, a gymnasium, and office space. The estimated cost of this work was \$22.1 million. The Newark campus of Rutgers University broke

ground on several new dormitories that had a combined construction cost of over \$45 million.

New House Prices

- 1,802 new houses were completed and began enrollment in a new home warranty program in the second quarter of 2012. The median sales price of these houses was \$429,450; this was 8.3 percent more than last quarter.
- Union, Essex, and Bergen Counties had the most expensive new houses. Half of the 52 new houses in Union County that began enrollment in a warranty program in the second quarter of 2012 had a sales price above \$650,000. The median sales price in Essex County was \$629,000. In Bergen County, it was \$575,990.

New House Prices			
Period	Number of New Houses	Median Sale Price	Percent Change in Sale Price
1996	20,903	\$183,300	
1997	21,640	\$190,000	3.7%
1998	23,884	\$209,980	10.5%
1999	24,479	\$224,496	6.9%
2000	25,058	\$231,728	3.2%
2001	23,372	\$253,670	9.5%
2002	23,647	\$274,705	8.3%
2003	22,226	\$307,168	11.8%
2004	23,844	\$349,900	13.9%
2005	24,571	\$378,992	8.3%
2006	22,697	\$413,825	9.2%
2007	18,397	\$424,570	2.6%
2008	13,841	\$425,000	0.1%
2009	9,161	\$368,512	-13.3%
2010	8,712	\$384,899	4.4%
2011	6,839	\$390,000	1.3%
1 st Quarter 2010	1,820	\$378,442	
2 nd Quarter 2010	2,811	\$380,360	0.5%
3 rd Quarter 2010	2,105	\$395,000	3.8%
4 th Quarter 2010	1,976	\$383,642	-2.9%
1 st Quarter 2011	1,401	\$372,350	-2.9%
2 nd Quarter 2011	1,955	\$400,072	7.4%
3 rd Quarter 2011	1,765	\$399,100	-0.2%
4 th Quarter 2011	1,718	\$384,500	-3.7%
1st Quarter 2012(p)	1,198	\$396,677	3.2%
2nd Quarter 2012(p)	1,802	\$429,450	8.3%
Source: N.J. Department of Community Affairs, 8/7/12			

THE NEW JERSEY CONSTRUCTION REPORTER contains statistics on construction activity in New Jersey. Information in the report comes from construction officials who administer the State Uniform Construction Code (UCC) (N.J.A.C. 5:23-1 et seq.) in New Jersey's 566 municipalities.

Each month, construction officials send to the New Jersey Department of Community Affairs (DCA) reports on the permits and certificates they issue. Permits authorize the start of construction and cover four types of activity: (1) New construction permits authorize the start of a new structure. (2) Permits for additions refer to work that will add space (volume and square feet) to an existing building. (3) Alterations also involve existing structures, but the work authorized will not add space. Typically, construction officials issue permits for alterations when the work is subject to one or more of the UCC's major subcodes (building, electrical, plumbing, fire protection). (4) Demolition permits authorize the removal of a building or some other structure. The *CONSTRUCTION REPORTER* identifies only those demolitions that will result in the loss of housing.

In addition to permits, the *CONSTRUCTION REPORTER* has information on the certificates issued by construction officials. While permits authorize the start of construction, certificates are issued for work completed and ready for occupancy. Each month, the *CONSTRUCTION REPORTER* will report on the number of housing units and the amount of office and retail space authorized for construction, along with the number of housing units and the amount of office and retail space completed.

Data Comparability

The *CONSTRUCTION REPORTER* contains information on authorized housing units that is tabulated two different ways. The DCA tabulates Tables 1 through 3 and Tables 8 through 13 based on the use of buildings, defined in "groups" by New Jersey's UCC. Exhibit B on page 3 summarizes these groups.

Tables 4, 5, and 6 show authorized housing units as defined and tabulated by the United States Census Bureau. The New Jersey Department of Labor and Workforce Development prepares these tables for publication in the *CONSTRUCTION REPORTER*. Exhibit C on page 4 describes the housing definitions used by the Census Bureau.

The DCA series and the Census Bureau series on authorized housing units differ two important ways. First, the DCA series includes housing units created as a result of permits issued to alter or make additions to existing structures. The Census Bureau counts only those housing units authorized from permits issued for new construction.

Second, the Census Bureau imputes data for localities that fail to submit monthly reports on time. An asterisk in the Census column of data appearing in the Municipal Summary Data table at the back of the *CONSTRUCTION REPORTER* indicates those towns with imputed data. The Census Bureau bases these imputations on historic trends. The DCA series shows information for only those towns that submitted monthly reports. If a municipality failed to submit a monthly report on time, "No report" appears in the appropriate columns in the Municipal Summary Data table.

Additional Terms

A number of other terms appear in the tables throughout the *CONSTRUCTION REPORTER*. Exhibit A on page 2 defines additional construction permit and certificate terms.

Exhibit A

Summary of Building Permit and Certificate Terms	
Addition	Permit type issued for construction work that adds space (volume and square feet) to an existing structure.
Alteration	Permit type involving one or more subcodes (building, electrical, fire protection, and plumbing). The work is authorized for an existing structure and does not add new space.
Certificate	A document issued by a construction official indicating completion of work for which a permit was issued.
Dollar Amount of Construction	Estimated cost of work, as reported by the permit applicant to the construction official.
Demolition	Permit type authorizing the demolition of an existing structure.
Housing Units Certified	A rental or for-sale unit completed and certified by the construction official for conforming to the standards in the New Jersey UCC.
Housing Units Authorized by Building Permits	A rental or for-sale dwelling unit authorized by a construction permit. See Exhibits B and C for explanations of the different definitions of housing structures. The Table 1 series and Tables 2 and 3 show housing units as classified by the residential use groups defined in Exhibit B. Tables 4, 5, and 6 identify authorized housing as defined by the U.S. Census Bureau. (See Exhibit C.)
Housing Unit Demolitions	Rental or for-sale housing to be demolished, as reported to the construction official by permit applicants.
New Construction	Permit type authorizing the start of a new structure.
Permit	A document issued by construction officials that authorizes the construction of a new structure or an addition, alteration, or demolition of an existing structure.
Square Feet	Estimated building area, as reported on permits for new construction and additions.
State Buildings	Buildings or structures constructed or owned by the State or any of its instrumentalities. Construction activity reported in this category includes State offices, colleges, hospitals, prisons, facilities operated by New Jersey Transit and the New Jersey Sports and Exposition Authority, and other State authorities.

Exhibit B

Building Groups	
Residential	Buildings where members of households live. Examples of residential groups include: one- and two-family houses (R-3 and R-5); apartments, dormitories, other multifamily houses (R-2); and mixed-use housing, where the house is a relatively smaller part of a building that has another use (e.g., an apartment over a store). Therapeutic residences (R-4) for 6 to 16 occupants are also included in this category. The Table 1 series and Tables 2 and 3 show authorized housing units by group definition.
The following groups refer to industrial, commercial, and other nonresidential structures.	
Assembly	Structures where people gather for civic, social, or religious purposes. Examples include: theaters and concert halls (group A-1); night clubs, dance halls, casino gaming areas, restaurants, taverns, and bars (A-2); churches, libraries, amusement arcades, community halls, gymnasiums, indoor swimming pools, art galleries, and museums (A-3); arenas, skating rinks, swimming pools, tennis courts (A-4); and grandstands, bleachers stadiums, and amusement park structures (A-5).
Business	Office buildings (group B) for business transactions of all kinds including banks, corporate offices, professional offices, government buildings, beauty shops, motor vehicle showrooms, and out-patient clinics.
Educational	Buildings for educational purposes through the 12th grade (group E).
High Hazard	Buildings used to manufacture, process, or store materials that constitute a high fire, explosion, or health hazard (group H).
Hotels, Motels, Guest Houses	Buildings for shelter and sleeping where the primary occupants use the facility on a temporary basis, staying less than 30 days (group R-1).
Industrial	Factory buildings where the occupants make, process, or assemble products that are not highly combustible, flammable, or explosive. Includes automotive, appliance, and furniture manufacturers; electric power plants; food processing plants; foundries; and water pumping, solid waste disposal, and incineration plants (group F).
Institutional	Buildings for people who suffer from physical limitations because of age or health; buildings for people detained for penal or correction purposes. Includes: supervised residential homes for six or more people (group I-1); medical and nursing-care facilities (I-2); jails, reformatories, and asylums (I-3); and day care for six or more occupants (I-4).
Mercantile	Buildings for display and sale purposes. Includes retail stores, automotive service stations, drug stores, shops, salesrooms, and markets (group M).
Storage	Buildings used to store goods that are not highly combustible or explosive. Includes warehouses, open parking garages, lumberyards, livestock shelters, and mausoleums (group S).
Signs, Fences, Miscellaneous	Accessory buildings and miscellaneous structures including fences over six feet in height, signs, private garages, sheds, agricultural buildings, carports, retaining walls, tanks, and swimming pools (group U).

Exhibit C

Residential Structures (U.S. Census Bureau Definitions)	
<p>Tables 4, 5, and 6 show authorized housing units based on the structure types defined below by the U.S. Census Bureau. The number of units shown in these tables refers to those authorized by building permits issued for new construction only.</p>	
Single-Family Houses	Include all detached one-family houses and all attached one-family houses separated by a wall that extends from ground to roof with no common heating system or inter-structural public utilities. Include prefabricated, sectionalized, panelized, and modular homes that are manufactured partially off site, but are transported and assembled at the construction site.
Two-Family Buildings	Include all buildings with two housing units that may be above one another or side by side. If built side by side, the structures (1) do not have a wall that extends from ground to roof; or (2) share a heating system; or (3) have inter-structural public utilities, such as water supply and sewage disposal.
Three- and Four-Family Buildings	Include all buildings with three or four housing units. If built side by side, the structures (1) do not have a wall that extends from ground to roof; or (2) share a heating system; or (3) have inter-structural public utilities, such as water supply and sewage disposal.
Five-or-More-Family Buildings	Include all buildings with five or more housing units. If built side by side, the structures (1) do not have a wall that extends from ground to roof; or (2) share a heating system; or (3) have inter-structural public utilities, such as water supply and sewage disposal.
Private Housing Units	Housing owned by a private company or individual during the period of construction. This includes all housing built by nonprofit organizations and "turnkey" housing; for example, housing that will be sold to a local public housing authority when completed.
Public Housing Units	Housing owned by a governmental body during the period of construction.

Table 1a HOUSE 8/7/12

Housing Units Authorized by Building Permits: New Jersey Counties, June 2012								
County	June				Year to Date			
	Total	1 & 2 Family	Multifamily	Mixed Use	Total	1 & 2 Family	Multifamily	Mixed Use
ATLANTIC	22	22	0	0	215	202	12	1
BERGEN	58	58	0	0	516	240	274	2
BURLINGTON	58	28	30	0	248	163	84	1
CAMDEN	75	9	66	0	383	68	315	0
CAPE MAY	36	35	1	0	209	201	8	0
CUMBERLAND	7	6	1	0	59	57	2	0
ESSEX	64	24	40	0	304	115	189	0
GLOUCESTER	34	34	0	0	214	214	0	0
HUDSON	481	5	476	0	1,253	41	1,212	0
HUNTERDON	4	4	0	0	49	24	25	0
MERCER	43	14	29	0	125	64	61	0
MIDDLESEX	187	88	99	0	487	337	149	1
MONMOUTH	102	60	42	0	377	323	49	5
MORRIS	33	31	2	0	239	142	96	1
OCEAN	155	72	83	0	817	671	146	0
PASSAIC	28	20	8	0	127	46	80	1
SALEM	1	1	0	0	27	27	0	0
SOMERSET	55	55	0	0	564	162	402	0
SUSSEX	7	7	0	0	38	38	0	0
UNION	30	30	0	0	508	144	364	0
WARREN	4	4	0	0	28	28	0	0
STATE BUILDINGS*	0	0	0	0	0	0	0	0
NEW JERSEY	1,484	607	877	0	6,787	3,307	3,468	12
NJ 2011 8/8/11	999	592	403	999	5,640	3,113	2,247	280

The definition of housing units in the Table 1 series and Table 2 do not match those in Tables 4, 5, and 6. See "Data Comparability" section on page 1, and Exhibits B and C on pages 3 and 4 for details.

*State buildings refer to structures owned or constructed by the State or any of its instrumentalities. See Exhibit A, Summary of Building Permit and Certificate Terms, on page 2.

Table 1b HSEMUN1 8/7/12

Housing Units Authorized by Building Permits: Top Municipalities, June 2012						
Rank	Municipality	County	Total	1 & 2 Family	Multifamily	Mixed Use
1	Jersey City	Hudson	474	1	473	0
2	Brick Township	Ocean	69	10	59	0
3	Cherry Hill Township	Camden	68	2	66	0
4	Woodbridge Township	Middlesex	65	5	60	0
5	Piscataway Township	Middlesex	51	27	24	0
6	Newark City	Essex	40	0	40	0
7	Howell Township	Monmouth	38	8	30	0
8	Monroe Township	Middlesex	36	21	15	0
9	Cinnaminson Township	Burlington	35	5	30	0
10	Stafford Township	Ocean	29	5	24	0
11	West Windsor Township	Mercer	25	0	25	0
12	Passaic City	Passaic	24	16	8	0
13	Franklin Township	Somerset	19	19	0	0
14	Hillsborough Township	Somerset	19	19	0	0
15	North Brunswick Township	Middlesex	15	15	0	0
16	Lakewood Township	Ocean	15	15	0	0
17	South Brunswick Township	Middlesex	14	14	0	0
18	Long Branch City	Monmouth	12	0	12	0
19	Palisades Park Borough	Bergen	10	10	0	0
20	River Vale Township	Bergen	10	10	0	0
TOP MUNICIPALITIES			594	201	393	594
NEW JERSEY			1,484	607	877	1,484
TOP AS % OF STATE			40.0%	33.1%	44.8%	40.0%

The definition of housing units in the Table 1 series and Table 2 do not match those in Tables 4, 5, and 6. See "Data Comparability" section on page 1, and Exhibits B and C on pages 3 and 4 for details.

Table 1c HSEMUN2 8/7/12

Housing Units Authorized by Building Permits: Top Municipalities, January through June 2012						
Rank	Municipality	County	Total	1 & 2 Family	Multifamily	Mixed Use
1	Jersey City	Hudson	537	20	517	0
2	Franklin Township	Somerset	448	82	366	0
3	West New York Town	Hudson	319	0	319	0
4	Cherry Hill Township	Camden	271	7	264	0
5	Lakewood Township	Ocean	240	240	0	0
6	Fort Lee Borough	Bergen	209	15	194	0
7	Weehawken Township	Hudson	181	0	181	0
8	Rahway City	Union	173	2	171	0
9	Monroe Township	Middlesex	158	143	15	0
10	Verona Township	Essex	135	5	130	0
11	Barneгат Township	Ocean	93	35	58	0
12	Brick Township	Ocean	83	24	59	0
13	Newark City	Essex	75	16	59	0
14	Woodbridge Township	Middlesex	75	15	60	0
15	Cinnaminson Township	Burlington	74	14	60	0
16	Piscataway Township	Middlesex	72	48	24	0
17	Egg Harbor Township	Atlantic	70	70	0	0
18	Ocean City	Cape May	70	70	0	0
19	Hoboken City	Hudson	70	4	66	0
20	Howell Township	Monmouth	69	39	30	0
TOP MUNICIPALITIES			3,422	849	2,573	0
NEW JERSEY			6,787	3,307	3,468	12
TOP AS % OF STATE			50.4%	25.7%	74.2%	0.0%

The definition of housing units in the Table 1 series and Table 2 do not match those in Tables 4, 5, and 6. See "Data Comparability" section on page 1, and Exhibits B and C on pages 3 and 4 for details.

Table 1d NEWHSE 8/7/12

Housing Units Authorized by New Construction Building Permits: New Jersey Counties, June 2012								
County	June				Year to Date			
	Total	1 & 2 Family	Multifamily	Mixed Use	Total	1 & 2 Family	Multifamily	Mixed Use
ATLANTIC	21	21	0	0	212	199	12	1
BERGEN	57	57	0	0	513	238	274	1
BURLINGTON	57	27	30	0	244	160	84	0
CAMDEN	74	8	66	0	378	63	315	0
CAPE MAY	35	34	1	0	205	197	8	0
CUMBERLAND	6	6	0	0	54	53	1	0
ESSEX	63	23	40	0	302	113	189	0
GLOUCESTER	34	34	0	0	214	214	0	0
HUDSON	480	5	475	0	1,230	39	1,191	0
HUNTERDON	4	4	0	0	48	23	25	0
MERCER	43	14	29	0	125	64	61	0
MIDDLESEX	187	88	99	0	485	336	149	0
MONMOUTH	101	59	42	0	374	320	49	5
MORRIS	33	31	2	0	238	141	96	1
OCEAN	152	69	83	0	804	658	146	0
PASSAIC	28	20	8	0	126	45	80	1
SALEM	1	1	0	0	26	26	0	0
SOMERSET	55	55	0	0	564	162	402	0
SUSSEX	7	7	0	0	38	38	0	0
UNION	26	26	0	0	501	140	361	0
WARREN	4	4	0	0	28	28	0	0
STATE BUILDINGS*	0	0	0	0	0	0	0	0
NEW JERSEY	1,468	593	875	0	6,709	3,257	3,443	9
NJ 2011 8/8/11	979	573	403	3	5,564	3,064	2,223	277

The definition of housing units in the Table 1 series and Table 2 do not match those in Tables 4, 5, and 6. See "Data Comparability" section on page 1, and Exhibits B and C on pages 3 and 4 for details.

*State buildings refer to structures owned or constructed by the State or any of its instrumentalities. See Exhibit A, Summary of Building Permit and Certificate Terms, on page 2.

You Are Viewing an Archived Copy from the New Jersey State Library

Housing Units Authorized by Building Permits

January-June 2012

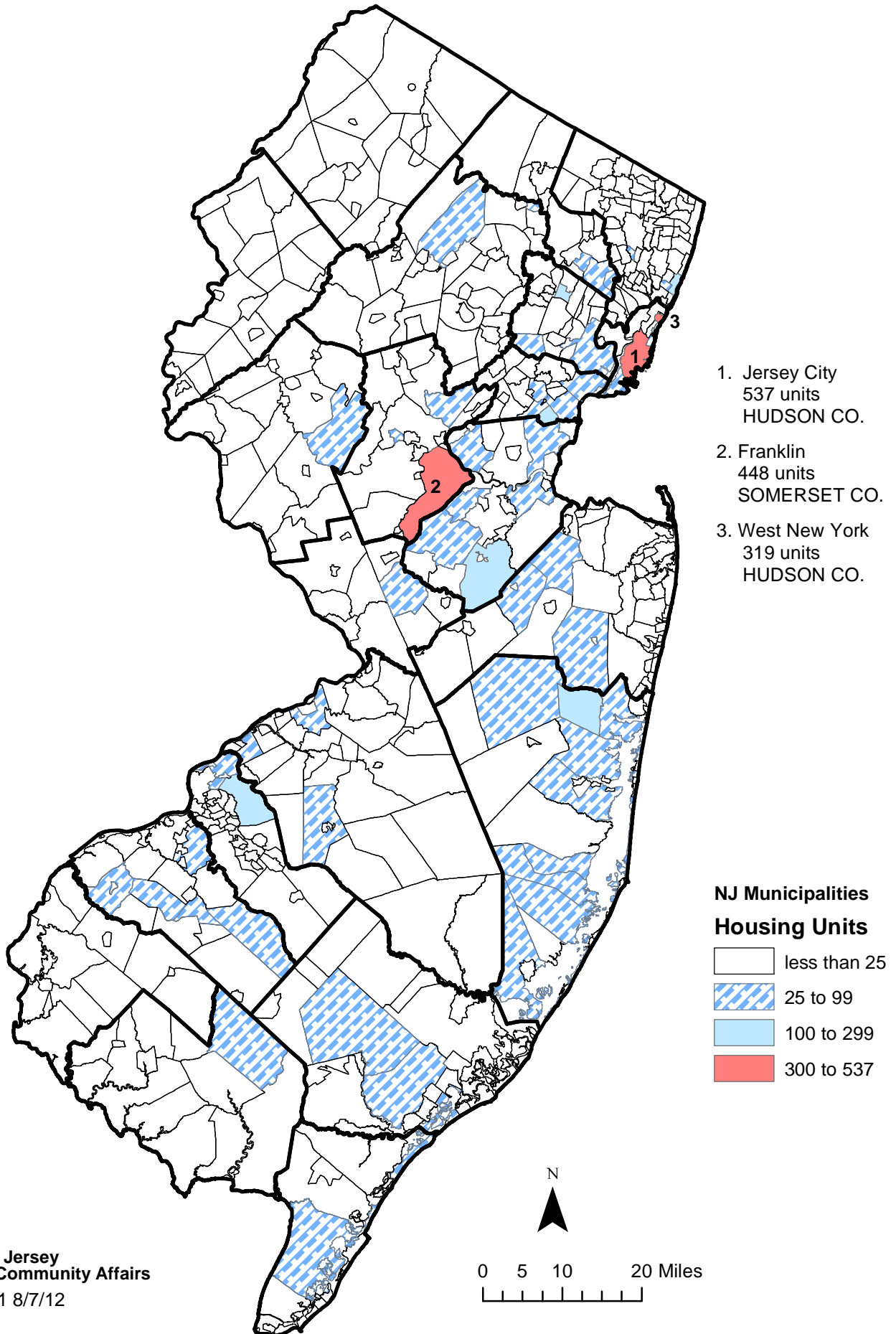


Table 2 CERTS 8/7/12

Housing Units Certified: New Jersey Counties, June 2012								
County	June				Year to Date			
	Total	1 & 2 Family	Multi- family	Mixed Use	Total	1 & 2 Family	Multi- family	Mixed Use
ATLANTIC	36	35	0	1	269	190	75	4
BERGEN	47	35	10	2	592	193	397	2
BURLINGTON	55	25	30	0	247	180	67	0
CAMDEN	47	24	23	0	161	83	78	0
CAPE MAY	69	66	3	0	252	235	17	0
CUMBERLAND	15	15	0	0	73	71	0	2
ESSEX	34	16	18	0	333	75	258	0
GLOUCESTER	47	46	1	0	228	204	24	0
HUDSON	152	8	144	0	523	26	497	0
HUNTERDON	8	8	0	0	70	32	38	0
MERCER	31	11	20	0	123	51	72	0
MIDDLESEX	92	50	42	0	503	283	219	1
MONMOUTH	46	46	0	0	318	254	63	1
MORRIS	20	17	3	0	223	114	109	0
OCEAN	123	120	1	2	782	567	213	2
PASSAIC	12	10	2	0	76	28	47	1
SALEM	5	5	0	0	31	30	0	1
SOMERSET	95	23	72	0	304	149	155	0
SUSSEX	10	10	0	0	36	36	0	0
UNION	16	16	0	0	359	81	277	1
WARREN	12	12	0	0	46	43	3	0
STATE BUILDINGS*	0	0	0	0	0	0	0	0
NEW JERSEY	972	598	369	5	5,549	2,925	2,609	15
NJ 20118/8/11	905	635	270	0	4,037	2,871	1,136	30

The definition of housing units in the Table 1 series and Table 2 do not match those in Tables 4, 5, and 6. See "Data Comparability" section on page 1, and Exhibits B and C on pages 3 and 4 for details.

*State buildings refer to structures owned or constructed by the State or any of its instrumentalities. See Exhibit A, Summary of Building Permit and Certificate Terms, on page 2.

Table 3 DEMOS 8/7/12

Housing Units Demolished: New Jersey Counties, June 2012								
County	June				Year to Date			
	Total	1 & 2 Family	Multifamily	Mixed Use	Total	1 & 2 Family	Multifamily	Mixed Use
ATLANTIC	13	12	0	1	83	80	0	3
BERGEN	21	20	0	1	147	142	0	5
BURLINGTON	18	18	0	0	65	62	1	2
CAMDEN	11	11	0	0	98	96	2	0
CAPE MAY	9	7	2	0	115	111	4	0
CUMBERLAND	2	2	0	0	22	22	0	0
ESSEX	11	9	2	0	60	52	7	1
GLOUCESTER	3	3	0	0	22	21	0	1
HUDSON	7	4	3	0	87	37	50	0
HUNTERDON	5	5	0	0	19	18	0	1
MERCER	13	8	5	0	48	43	5	0
MIDDLESEX	8	8	0	0	59	54	1	4
MONMOUTH	20	20	0	0	170	147	7	16
MORRIS	14	14	0	0	72	69	2	1
OCEAN	18	18	0	0	183	179	0	4
PASSAIC	24	24	0	0	66	42	17	7
SALEM	1	1	0	0	8	8	0	0
SOMERSET	5	5	0	0	30	30	0	0
SUSSEX	5	5	0	0	14	13	0	1
UNION	11	10	0	1	59	49	6	4
WARREN	0	0	0	0	10	10	0	0
STATE BUILDINGS*	0	0	0	0	0	0	0	0
NEW JERSEY	219	204	12	3	1,437	1,285	102	50
NJ 2011 8/8/11	226	188	32	6	1,327	1,122	176	29

*State buildings refer to structures owned or constructed by the State or any of its instrumentalities. See Exhibit A, Summary of Building Permit and Certificate Terms, on page 2.

Table 4

Residential Construction Authorized by Building Permits (Census Definitions) New Jersey, June 2012						
Type of Construction	May 2012	June 2012	Year to Date*			
			2011	2012	Change	
					Number	Percent
Total Private Units Authorized	1,186	2,098	6,401	8,129	1,728	27.0
Single Family	651	675	3,309	3,482	173	5.2
Two Family	34	32	218	222	4	1.8
Three or Four Family	12	12	91	84	-7	-7.7
Five or More Family	489	1,379	2,783	4,341	1,558	56.0
CENSUS1 7/20/01						

*Year-to-date totals include data received too late for monthly tabulation. The Census Bureau allocates revisions to prior months and therefore monthly year-to-date totals reflect these changes.

Authorized dwelling units in the Table 1 series and Table 2 do not match those in Tables 4, 5, and 6 due to definitional differences. See "Data Comparability" section on page 1, and Exhibits B and C on pages 3 and 4 for details.

Source: U.S. Census Bureau, Manufacturing and Construction Division
Prepared by: N.J. Department of Labor and Workforce Development, July, 2012

Table 5

You Are Viewing an Archived Copy from the New Jersey State Library

Residential Construction Authorized by Building Permits (Census Definitions) New Jersey: 1991 to Present						
Year and Month	Number of Municipalities	Total	Single Family	Two Family	3 or 4 Family	5 or More Family
1991	567	14,856	12,869	402	101	1,484
1992	567	19,072	16,506	510	74	1,982
1993	567	25,188	21,340	758	129	2,961
1994	567	25,388	22,437	722	121	2,108
1995	567	21,521	18,341	670	158	2,352
1996	567	24,173	20,853	880	211	2,229
1997	566	28,018	23,472	916	324	3,306
1998	566	31,345	25,459	1,172	221	4,493
1999	566	31,976	25,129	1,468	290	5,089
2000	566	34,585	25,260	1,844	305	7,176
2001	566	28,267	21,503	1,827	779	4,158
2002	566	30,441	22,379	2,110	742	5,210
2003	566	32,984	22,163	2,870	912	7,039
2004	566	35,936	22,429	3,300	1,476	8,731
2005	566	38,588	22,264	3,212	1,437	11,675
2006	566	34,323	17,113	3,088	1,708	12,414
2007	566	25,389	13,066	1,692	1,311	9,320
2008	566	18,363	9,169	664	411	8,119
2009	566	12,421	7,211	400	206	4,604
2010	566	13,540	7,383	680	276	5,201
2011	566	13,079	6,509	438	178	5,954
2012						
January [‡]	566	925	415	38	3	469
February	566	1,104	468	32	16	588
March [‡]	566	1,258	587	42	15	614
April [‡]	566	1,558	686	44	26	802
May [‡]	566	1,186	651	34	12	489
June	566	2,098	675	32	12	1,379
<u>Year to Date*</u>						
June 2011	---	6,401	3,309	218	91	2,783
June 2012	---	8,129	3,482	222	84	4,341

[‡]Revised – Monthly data are revised to reflect changes in the year-to-date total.

*Year-to-date totals include data received too late for monthly tabulation. The Census Bureau allocates revisions to prior months and therefore monthly year-to-date totals reflect these changes.

Authorized dwelling units in the Table 1 series and Table 2 do not match those in Tables 4, 5, and 6 due to definitional differences.

See "Data Comparability" section on page 1, and Exhibits B and C on pages 3 and 4 for details.

Source: U.S. Census Bureau, Manufacturing and Construction Division

Prepared by: N.J. Department of Labor and Workforce Development, July, 2012

Table 6

Residential Construction Authorized by Building Permits (Census Definitions) New Jersey Counties, 2012						
County	June					Total Year to Date* 2012
	Total	Single Family	Two Family	3 or 4 Family	5 or More Family	
ATLANTIC	42	35	0	0	7	225
BERGEN	121	69	10	0	42	625
BURLINGTON	69	35	0	0	34	336
CAMDEN	120	19	0	0	101	539
CAPE MAY	36	24	12	0	0	199
CUMBERLAND	14	14	0	0	0	92
ESSEX	105	21	0	3	81	599
GLOUCESTER	48	48	0	0	0	248
HUDSON	822	4	4	3	811	1,358
HUNTERDON	10	5	0	0	5	102
MERCER	39	11	0	3	25	135
MIDDLESEX	175	93	0	0	82	618
MONMOUTH	107	54	0	0	53	458
MORRIS	83	46	0	0	37	391
OCEAN	108	65	2	0	41	554
PASSAIC	48	30	0	0	18	225
SALEM	3	3	0	0	0	31
SOMERSET	66	49	0	0	17	635
SUSSEX	18	13	0	0	5	105
UNION	54	27	4	3	20	587
WARREN	10	10	0	0	0	67
NEW JERSEY	2,098	675	32	12	1,379	8,129
CENSUS3 7/20/01						

*Year-to-date totals include data received too late for monthly tabulation. See Table 5 for revised statewide data for prior months.

Authorized dwelling units in the Table 1 series and Table 2 do not match those in Tables 4, 5, and 6 due to definitional differences. See "Data Comparability" section on page 1, and Exhibits B and C on pages 3 and 4 for details.

Source: U.S. Census Bureau, Manufacturing and Construction Division
Prepared by: N.J. Department of Labor and Workforce Development, July, 2012

Table 7a OFFCSPC 8/7/12

Office Square Feet Authorized by Building Permits: New Jersey Counties, June 2012						
County	June			Year to Date		
	Total	New Construction	Additions	Total	New Construction	Additions
ATLANTIC	12,891	11,175	1,716	35,427	27,284	8,143
BERGEN	10,928	5,307	5,621	270,572	218,702	51,870
BURLINGTON	0	0	0	287,047	278,007	9,040
CAMDEN	462	0	462	103,001	93,459	9,542
CAPE MAY	0	0	0	16,223	12,649	3,574
CUMBERLAND	694	0	694	6,115	5,400	715
ESSEX	2,801	2,801	0	399,181	381,734	17,447
GLOUCESTER	9,071	0	9,071	20,174	8,503	11,671
HUDSON	8,370	8,370	0	64,910	64,910	0
HUNTERDON	1	1	0	20,212	14,433	5,779
MERCER	0	0	0	251,294	251,294	0
MIDDLESEX	248,430	232,134	16,296	650,310	533,795	116,515
MONMOUTH	8,152	4,951	3,201	70,672	52,035	18,637
MORRIS	10,797	1,792	9,005	508,281	247,358	260,923
OCEAN	3,683	3,683	0	255,364	214,633	40,731
PASSAIC	211,317	211,317	0	290,371	258,475	31,896
SALEM	720	0	720	5,520	4,800	720
SOMERSET	0	0	0	80,159	76,441	3,718
SUSSEX	2,126	2,126	0	15,132	14,556	576
UNION	20,832	9,000	11,832	289,057	35,926	253,131
WARREN	2	0	2	14,671	5,704	8,967
STATE BUILDINGS*	0	0	0	42,879	42,879	0
NEW JERSEY	551,277	492,657	58,620	3,696,572	2,842,977	853,595
NJ 20118/8/11	172,797	148,337	24,460	2,436,159	1,915,660	520,499

*State buildings refer to structures owned or constructed by the State or any of its instrumentalities. See Exhibit A, Summary of Building Permit and Certificate Terms, on page 2.

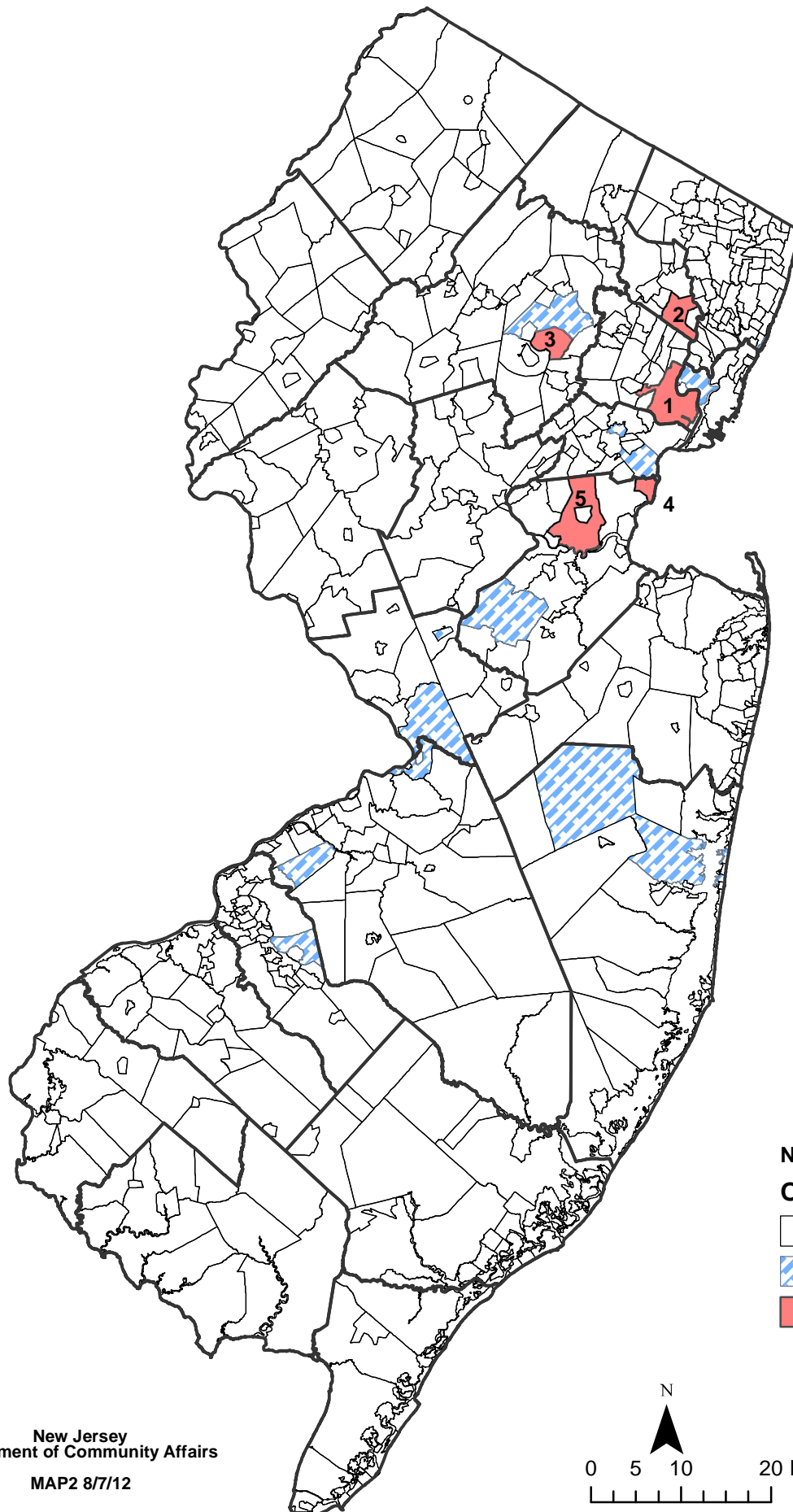
Table 7b OFFCMUN1 8/7/12

Office Square Feet Authorized by Building Permits: New Jersey Top Municipalities, June 2012					
Rank	Municipality	County	Total	New Construction	Additions
1	Carteret Borough	Middlesex	245,934	232,134	13,800
2	Clifton City	Passaic	211,317	211,317	0
3	Clark Township	Union	11,305	0	11,305
4	Buena Borough	Atlantic	11,175	11,175	0
5	Union Township	Union	9,527	9,000	527
6	Bayonne City	Hudson	8,370	8,370	0
7	Rockaway Borough	Morris	6,109	0	6,109
8	Monroe Township	Gloucester	5,586	0	5,586
9	River Edge Borough	Bergen	4,000	0	4,000
10	Lakewood Township	Ocean	3,683	3,683	0
11	Lyndhurst Township	Bergen	3,538	3,263	275
12	West Deptford Township	Gloucester	3,485	0	3,485
13	Middletown Township	Monmouth	3,200	0	3,200
14	Freehold Township	Monmouth	2,960	2,960	0
15	Butler Borough	Morris	2,896	0	2,896
16	Newark City	Essex	2,800	2,800	0
17	Old Bridge Township	Middlesex	2,496	0	2,496
18	Sparta Township	Sussex	2,126	2,126	0
19	North Arlington Borough	Bergen	2,044	2,044	0
20	Aberdeen Township	Monmouth	1,990	1,990	0
TOP MUNICIPALITIES			544,541	490,862	53,679
NEW JERSEY			551,277	492,657	58,620
TOP AS % OF STATE			98.8%	99.6%	91.6%

Table 7c OFFCMUN2 8/7/12

Office Square Feet Authorized by Building Permits: New Jersey Top Municipalities, January-June 2012					
Rank	Municipality	County	Total	New Construction	Additions
1	Newark City	Essex	366,149	366,149	0
2	Clifton City	Passaic	262,606	233,028	29,578
3	Hanover Township	Morris	252,411	4,746	247,665
4	Carteret Borough	Middlesex	245,934	232,134	13,800
5	Edison Township	Middlesex	244,032	244,032	0
6	Parsippany-Troy Hills Twp	Morris	221,020	219,621	1,399
7	Moorestown Township	Burlington	199,200	199,200	0
8	Edgewater Borough	Bergen	171,756	170,586	1,170
9	Jackson Township	Ocean	149,446	149,446	0
10	Kenilworth Borough	Union	140,329	0	140,329
11	Princeton Borough	Mercer	126,622	126,622	0
12	Linden City	Union	118,099	24,000	94,099
13	Hamilton Township	Mercer	102,810	102,810	0
14	South Brunswick Township	Middlesex	97,519	0	97,519
15	Voorhees Township	Camden	88,736	87,864	872
16	Bordentown Township	Burlington	78,805	78,805	0
17	Toms River Township	Ocean	62,598	52,103	10,495
18	Kearny Town	Hudson	56,540	56,540	0
19	Woodbridge Township	Middlesex	39,062	39,062	0
20	Brick Township	Ocean	31,719	3,419	28,300
TOP MUNICIPALITIES			3,055,393	2,390,167	665,226
NEW JERSEY			3,696,572	2,842,977	853,595
TOP AS % OF STATE			82.7%	84.1%	77.9%




Office Square Feet Authorized by Building Permits
January-June 2012



1. Newark
366,649 sq. ft.
ESSEX CO.
2. Hanover Twp.
252,411 sq. ft.
MORRIS CO.
3. Hanover Twp.
252,411 sq. ft.
MORRIS CO.
4. Carteret
245,934 sq. ft.
MIDDLESEX CO.
5. Edison
244,032 sq. ft.
MIDDLESEX CO.

NJ Municipalities

Office Square Feet

	less than 50,000
	50,000 to 224,999
	225,000 to 366,149

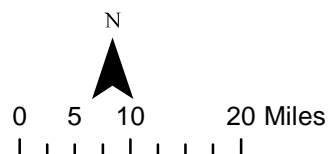


Table 8 CERTOFF 8/7/12

Office Square Feet Certified: New Jersey Counties, June 2012						
County	June			Year to Date		
	Total	New Construction	Additions	Total	New Construction	Additions
ATLANTIC	5,050	5,050	0	11,306	10,250	1,056
BERGEN	35,008	35,008	0	199,656	131,117	68,539
BURLINGTON	27,387	27,387	0	106,857	91,797	15,060
CAMDEN	0	0	0	9,233	8,475	758
CAPE MAY	0	0	0	12,760	12,759	1
CUMBERLAND	4,494	4,494	0	28,140	24,193	3,947
ESSEX	25,688	3,086	22,602	52,351	8,434	43,917
GLOUCESTER	10,350	10,350	0	68,328	22,705	45,623
HUDSON	4,650	4,650	0	25,356	25,355	1
HUNTERDON	56,857	54,957	1,900	72,816	70,916	1,900
MERCER	3,099	0	3,099	13,418	1,392	12,026
MIDDLESEX	43,561	43,261	300	252,201	221,045	31,156
MONMOUTH	0	0	0	79,709	74,626	5,083
MORRIS	980	0	980	92,710	67,079	25,631
OCEAN	9,309	6,020	3,289	98,361	73,842	24,519
PASSAIC	13,335	13,335	0	471,801	420,808	50,993
SALEM	0	0	0	14,983	14,983	0
SOMERSET	16,870	3,200	13,670	29,926	13,196	16,730
SUSSEX	0	0	0	8,624	8,624	0
UNION	0	0	0	17,636	1,580	16,056
WARREN	2,212	0	2,212	6,213	0	6,213
STATE BUILDINGS*	0	0	0	21,259	21,259	0
NEW JERSEY	258,850	210,798	48,052	1,693,644	1,324,435	369,209
NJ 2011 8/8/11	128,977	108,468	20,509	1,259,878	885,116	374,762

*State buildings refer to structures owned or constructed by the State or any of its instrumentalities. See Exhibit A, Summary of Building Permit and Certificate Terms, on page 2.

Table 9a RETSPACE 8/7/12

Retail Square Feet Authorized by Building Permits: New Jersey Counties, June 2012						
County	June			Year to Date		
	Total	New Construction	Additions	Total	New Construction	Additions
ATLANTIC	26,000	0	26,000	26,000	0	26,000
BERGEN	0	0	0	30,956	28,890	2,066
BURLINGTON	80,972	12,033	68,939	83,336	12,034	71,302
CAMDEN	0	0	0	11,935	11,935	0
CAPE MAY	0	0	0	96	0	96
CUMBERLAND	3,182	0	3,182	6,153	0	6,153
ESSEX	0	0	0	786	0	786
GLOUCESTER	0	0	0	324	323	1
HUDSON	7,080	7,080	0	437,486	15,241	422,245
HUNTERDON	0	0	0	14,838	14,838	0
MERCER	0	0	0	2,898	2,898	0
MIDDLESEX	0	0	0	20,858	18,761	2,097
MONMOUTH	5,596	4,543	1,053	30,063	26,859	3,204
MORRIS	0	0	0	1,085	0	1,085
OCEAN	64,346	37,946	26,400	132,152	78,422	53,730
PASSAIC	0	0	0	31,129	31,129	0
SALEM	24,200	24,200	0	25,968	24,200	1,768
SOMERSET	0	0	0	0	0	0
SUSSEX	1	1	0	16,048	16,048	0
UNION	0	0	0	2,304	0	2,304
WARREN	4,002	4,002	0	18,540	18,540	0
STATE BUILDINGS*	0	0	0	0	0	0
NEW JERSEY	215,379	89,805	125,574	892,955	300,118	592,837
NJ 2011 8/8/11	12,303	7,498	4,805	845,638	812,489	33,149

*State buildings refer to structures owned or constructed by the State or any of its instrumentalities. See Exhibit A, Summary of Building Permit and Certificate Terms, on page 2.

Table 9b RETMUN1 8/7/12

Retail Square Feet Authorized by Building Permits: New Jersey Top Municipalities, June 2012					
Rank	Municipality	County	Total	New Construction	Additions
1	Burlington Township	Burlington	80,972	12,033	68,939
2	Brick Township	Ocean	37,946	37,946	0
3	Toms River Township	Ocean	26,400	0	26,400
4	Hamilton Township	Atlantic	26,000	0	26,000
5	Quinton Township	Salem	24,200	24,200	0
6	Jersey City	Hudson	7,080	7,080	0
7	Highlands Borough	Monmouth	4,543	4,543	0
8	Washington Township	Warren	4,002	4,002	0
9	Vineland City	Cumberland	3,182	0	3,182
10	Upper Freehold Township	Monmouth	1,053	0	1,053
11	Andover Township	Sussex	1	1	0
12					
13					
14					
15					
16					
17					
18					
19					
20					
	TOP MUNICIPALITIES		215,379	89,805	125,574
	NEW JERSEY		215,379	89,805	125,574
	TOP AS % OF STATE		100.0%	100.0%	100.0%

Table 9c RETMUN2 8/7/12

Retail Square Feet Authorized by Building Permits: New Jersey Top Municipalities, January-June 2012					
Rank	Municipality	County	Total	New Construction	Additions
1	Kearny Town	Hudson	427,828	5,583	422,245
2	Brick Township	Ocean	100,116	73,396	26,720
3	Burlington Township	Burlington	80,972	12,033	68,939
4	Lyndhurst Township	Bergen	28,890	28,890	0
5	Toms River Township	Ocean	26,400	0	26,400
6	Hamilton Township	Atlantic	26,000	0	26,000
7	Quinton Township	Salem	24,200	24,200	0
8	Woodbridge Township	Middlesex	20,858	18,761	2,097
9	Washington Township	Warren	18,539	18,539	0
10	Raritan Township	Hunterdon	14,838	14,838	0
11	Hazlet Township	Monmouth	14,838	14,838	0
12	Haledon Borough	Passaic	14,763	14,763	0
13	Hampton Township	Sussex	12,651	12,651	0
14	Runnemede Borough	Camden	11,935	11,935	0
15	Jersey City	Hudson	9,658	9,658	0
16	Howell Township	Monmouth	9,624	7,473	2,151
17	Totowa Borough	Passaic	9,549	9,549	0
18	Paterson City	Passaic	6,817	6,817	0
19	Vineland City	Cumberland	6,153	0	6,153
20	Lakewood Township	Ocean	5,025	5,025	0
TOP MUNICIPALITIES			869,654	288,949	580,705
NEW JERSEY			892,955	300,118	592,837
TOP AS % OF STATE			97.4%	96.3%	98.0%

Retail Square Feet Authorized by Building Permits January-June 2012

You Are Viewing an Archived Copy from the New Jersey State Library

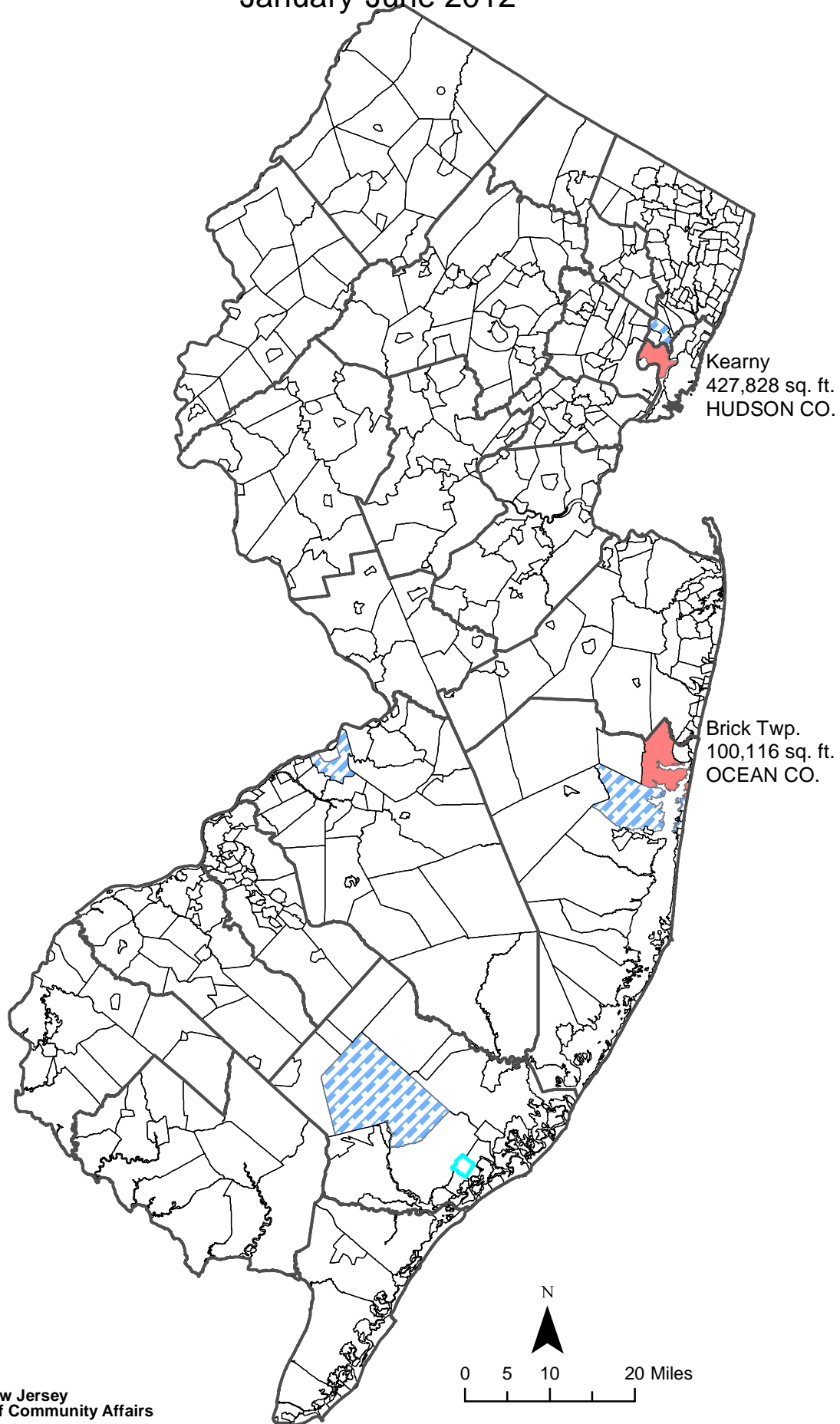


Table 10 CERTRET 8/7/12

Retail Square Feet Certified: New Jersey Counties, June 2012						
County	June			Year to Date		
	Total	New Construction	Additions	Total	New Construction	Additions
ATLANTIC	45,718	45,718	0	45,718	45,718	0
BERGEN	18,487	18,487	0	225,413	225,413	0
BURLINGTON	0	0	0	38,233	38,233	0
CAMDEN	0	0	0	0	0	0
CAPE MAY	0	0	0	2,474	1,884	590
CUMBERLAND	0	0	0	0	0	0
ESSEX	0	0	0	7,172	7,172	0
GLOUCESTER	214,086	209,796	4,290	229,186	224,434	4,752
HUDSON	0	0	0	0	0	0
HUNTERDON	0	0	0	12,000	12,000	0
MERCER	648	648	0	648	648	0
MIDDLESEX	0	0	0	22,005	22,005	0
MONMOUTH	0	0	0	4,527	3,927	600
MORRIS	5,826	2,946	2,880	23,377	19,273	4,104
OCEAN	1	1	0	58,226	58,226	0
PASSAIC	0	0	0	1,498	1,050	448
SALEM	0	0	0	0	0	0
SOMERSET	0	0	0	0	0	0
SUSSEX	0	0	0	8,384	8,384	0
UNION	0	0	0	11,330	3,086	8,244
WARREN	0	0	0	5,589	5,589	0
STATE BUILDINGS*	0	0	0	0	0	0
NEW JERSEY	284,766	277,596	7,170	695,780	677,042	18,738
NJ 2011 8/8/11	310,160	308,955	1,205	768,053	706,992	61,061

*State buildings refer to structures owned or constructed by the State or any of its instrumentalities. See Exhibit A, Summary of Building Permit and Certificate Terms, on page 2.

Table 11a WORK 8/7/12

Dollar Amount of Construction Authorized by Building Permits: New Jersey Counties, June 2012						
County	June			Year to Date		
	Total	Residential	Nonresidential	Total	Residential	Nonresidential
ATLANTIC	\$39,177,031	\$6,752,522	\$32,424,509	\$175,469,989	\$66,672,940	\$108,797,049
BERGEN	105,770,465	62,203,796	43,566,669	595,074,136	350,099,515	244,974,621
BURLINGTON	51,531,740	15,776,295	35,755,445	244,533,976	84,937,659	159,596,317
CAMDEN	30,654,451	11,366,317	19,288,134	187,047,194	85,737,121	101,310,073
CAPE MAY	17,897,111	13,273,409	4,623,702	111,567,670	88,739,034	22,828,636
CUMBERLAND	5,881,268	2,179,050	3,702,218	47,657,262	12,973,417	34,683,845
ESSEX	96,214,836	41,348,860	54,865,976	446,664,454	225,539,312	221,125,142
GLOUCESTER	21,712,887	10,328,002	11,384,885	147,670,227	54,050,743	93,619,484
HUDSON	153,289,047	121,989,763	31,299,284	469,551,379	307,627,841	161,923,538
HUNTERDON	10,984,271	5,283,693	5,700,578	68,900,623	36,937,211	31,963,412
MERCER	103,379,621	25,165,708	78,213,913	333,469,834	92,524,497	240,945,337
MIDDLESEX	97,842,986	32,293,911	65,549,075	457,508,295	154,297,423	303,210,872
MONMOUTH	66,017,832	40,583,280	25,434,552	380,876,327	231,330,278	149,546,049
MORRIS	72,066,385	32,496,905	39,569,480	376,569,040	151,223,085	225,345,955
OCEAN	86,870,203	39,633,667	47,236,536	383,428,676	233,102,526	150,326,150
PASSAIC	35,333,123	9,688,934	25,644,189	148,706,380	65,397,927	83,308,453
SALEM	3,012,252	688,099	2,324,153	24,078,605	6,979,010	17,099,595
SOMERSET	45,059,834	23,329,270	21,730,564	279,964,726	142,476,253	137,488,473
SUSSEX	8,981,558	5,209,139	3,772,419	52,266,164	29,162,285	23,103,879
UNION	58,058,539	23,275,276	34,783,263	339,393,286	144,190,444	195,202,842
WARREN	7,789,225	3,225,245	4,563,980	39,603,632	14,481,457	25,122,175
STATE BUILDINGS*	24,594,788	3,860,000	20,734,788	169,389,529	9,720,931	159,668,598
NEW JERSEY	\$1,142,119,453	\$529,951,141	\$612,168,312	\$5,479,391,404	\$2,588,200,909	\$2,891,190,495
NJ 20118/8/11	\$920,583,176	\$435,680,392	\$484,902,784	\$5,283,021,139	\$2,172,620,869	\$3,110,400,270

*State buildings refer to structures owned or constructed by the State or any of its instrumentalities. See Exhibit A, Summary of Building Permit and Certificate Terms, on page 2.

Table 11b WORK1 8/8/12

Dollar Amount Construction Authorized by Building Permits: Top Municipalities, June 2012					
Rank	Municipality	County	Total	Residential	Nonresidential
1	Jersey City	Hudson	\$70,052,116	\$51,486,657	\$18,565,459
2	Weehawken Township	Hudson	62,908,372	62,517,527	390,845
3	Brick Township	Ocean	42,361,182	8,667,630	33,693,552
4	Plainsboro Township	Middlesex	23,617,480	629,122	22,988,358
5	East Orange City	Essex	21,860,315	526,365	21,333,950
6	Robbinsville Township	Mercer	20,391,428	980,831	19,410,597
7	Newark City	Essex	19,870,431	10,199,525	9,670,906
8	Atlantic City	Atlantic	18,760,939	395,485	18,365,454
9	Lawrence Township	Mercer	18,654,493	1,289,945	17,364,548
10	Princeton Borough	Mercer	15,493,695	5,903,670	9,590,025
11	Ewing Township	Mercer	15,275,781	1,103,903	14,171,878
12	Randolph Township	Morris	14,819,953	1,447,910	13,372,043
13	Elizabeth City	Union	14,240,239	1,350,182	12,890,057
14	Clifton City	Passaic	13,857,856	1,426,636	12,431,220
15	Paramus Borough	Bergen	12,591,072	2,128,607	10,462,465
16	Piscataway Township	Middlesex	12,523,593	6,693,170	5,830,423
17	Burlington Township	Burlington	12,175,653	881,125	11,294,528
18	Medford Township	Burlington	12,175,653	881,125	11,294,528
19	Fort Lee Borough	Burlington	11,974,494	2,710,595	9,263,899
20	Bridgewater Township	Bergen	11,356,477	8,788,512	2,567,965
TOP MUNICIPALITIES			433,604,745	170,517,594	96,279,064
NEW JERSEY			\$1,142,119,453	\$529,951,141	\$612,168,312
TOP AS % OF STATE			38.0%	32.2%	15.7%

Table 11c WORK2 8/7/12

Dollar Amount Construction Authorized by Building Permits: Top Municipalities, January-June 2012					
Rank	Municipality	County	Total	Residential	Nonresidential
1	Jersey City	Hudson	\$164,159,812	\$98,825,425	\$65,334,387
2	Newark City	Essex	160,536,843	71,942,460	88,594,383
3	Brick Township	Ocean	87,776,903	27,731,994	60,044,909
4	Weehawken Township	Hudson	83,421,912	73,921,720	9,500,192
5	Franklin Township	Somerset	83,231,122	48,077,975	35,153,147
6	Plainsboro Township	Middlesex	77,810,336	3,130,474	74,679,862
7	Parsippany-Troy Hills	Morris	73,665,593	7,743,411	65,922,182
8	Atlantic City	Atlantic	69,955,150	3,169,966	66,785,184
9	West New York Town	Hudson	65,447,688	63,200,177	2,247,511
10	Fort Lee Borough	Bergen	64,397,806	57,280,493	7,117,313
11	Woodbridge Township	Middlesex	58,149,509	14,624,809	43,524,700
12	Cherry Hill Township	Camden	56,426,520	34,563,621	21,862,899
13	Lakewood Township	Ocean	53,792,517	37,120,976	16,671,541
14	Lawrence Township	Mercer	53,777,220	5,374,287	48,402,933
15	Paramus Borough	Bergen	53,719,464	9,047,117	44,672,347
16	Toms River Township	Ocean	51,509,562	23,690,429	27,819,133
17	Hanover Township	Morris	51,162,978	4,246,469	46,916,509
18	Bridgewater Township	Somerset	49,991,144	10,397,451	39,593,693
19	Edison Township	Middlesex	47,810,520	15,205,302	32,605,218
20	Kenilworth Borough	Union	47,519,134	1,745,233	45,773,901
TOP MUNICIPALITIES			1,454,261,733	611,039,789	843,221,944
NEW JERSEY			\$5,479,391,404	\$2,588,200,909	\$2,891,190,495
TOP AS % OF STATE			26.5%	23.6%	29.2%

Estimated Dollar Amount of Construction
Authorized by Building Permits, January-June 2012

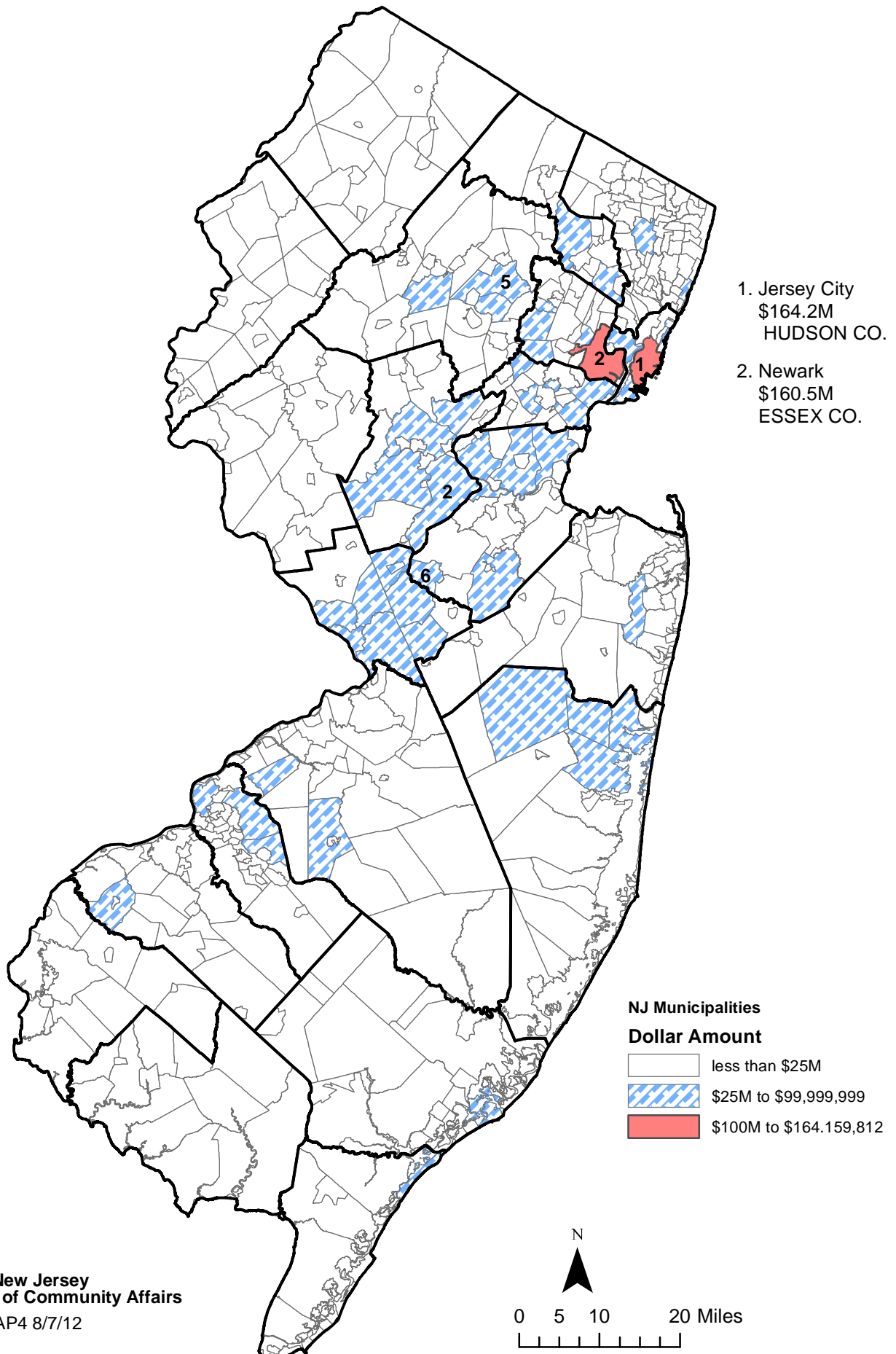


Table 12 USEGROUP 8/7/12

Dollar Amount of Construction Authorized by Building Permits by Use Group: New Jersey, June 2012						
Use Group	June			Year to Date		
	Permits	Construction Costs	Square Feet	Permits	Construction Costs	Square Feet
RESIDENTIAL	28,401	\$529,951,141	3,996,220	159,280	\$2,588,200,909	19,446,340
1 & 2 Family	26,544	346,955,105	2,763,888	148,642	1,915,288,924	13,673,367
Multifamily	1,857	182,996,036	1,232,332	10,638	672,911,985	5,772,973
NONRESIDENTIAL	7,329	\$612,168,312	1,998,763	39,597	2,891,190,495	10,471,151
Hotels, Motels, Guest Houses	123	3,655,685	1	536	23,004,546	813
Assembly	556	51,257,018	152,390	3,255	342,091,048	969,674
Business	2,423	231,002,187	551,277	14,533	1,262,621,794	3,696,572
Educational	373	97,671,849	54,764	1,247	249,696,180	526,702
Hazardous Use	5	479,250	0	30	2,294,240	1
Industrial	63	8,074,694	15,375	408	73,273,933	221,980
Institutional	89	45,946,200	155,501	514	170,133,609	937,064
Retail	415	60,045,115	215,379	2,729	246,008,113	892,955
Storage	181	52,890,656	537,078	1,058	160,038,093	1,725,968
Signs, Fences, Miscellaneous	3,101	61,145,658	316,998	15,287	362,028,939	1,499,422
NEW JERSEY	35,730	\$1,142,119,453	5,994,983	198,877	\$5,479,391,404	29,917,491
NJ 2011 8/8/11						

Table 13 PARTIC 8/7/12

Dollar Amount of Construction Authorized by Building Permits: New Jersey, June 2012					
Month	Number of Municipalities Reporting	Total	New Construction	Additions	Alterations
JANUARY	566	\$801,180,169	\$278,683,357	\$55,686,176	\$466,810,636
FEBRUARY	565	712,179,269	236,030,778	69,821,604	406,326,887
MARCH	565	968,908,512	338,030,601	101,226,262	529,651,649
APRIL	554	939,203,635	260,880,985	130,230,732	548,091,918
MAY	554	915,800,366	216,701,017	111,506,068	587,593,281
JUNE	554	1,142,119,453	379,801,151	122,121,355	640,196,947
JULY					
AUGUST					
SEPTEMBER					
OCTOBER					
NOVEMBER					
DECEMBER					
TOTAL		\$5,479,391,404	\$1,710,127,889	\$590,592,197	\$3,178,671,318
YEAR-TO-DATE TOTAL 2011 8/8/11		\$5,283,021,139	\$1,916,432,227	\$495,133,533	\$2,871,455,379

NOTE:

Users of the monthly *CONSTRUCTION REPORTER* may notice that year-to-date figures in a particular issue may not be obtained by merely summing the monthly totals that appear in previous issues. This is because the construction data compiled by the New Jersey Department of Community Affairs are continuously updated. Monthly construction reports submitted too late to make the January issue of the *CONSTRUCTION REPORTER*, for example, are included in the year-to-date totals that appear in the February issue.

Table 14 CENREG 8/7/12

You Are Viewing an Archived Copy from the New Jersey State Library

Average and Median Price of New Houses Issued a Warranty New Jersey Counties: Second Quarter 2012							
County	Region	Number of Units	Total Sale Price	Average Sale Price	Median Sale Price	Average Sale Price Rank	Median Sale Price Rank
ATLANTIC	SOUTH	103	40,820,276	\$396,313	\$280,308	13	17
BERGEN	NORTH	127	93,514,768	736,337	575,990	2	3
BURLINGTON	SOUTH	77	24,613,307	319,653	289,543	15	16
CAMDEN	SOUTH	38	11,207,295	294,929	243,723	18	18
CAPE MAY	SOUTH	170	103,658,251	609,754	545,000	5	4
CUMBERLAND	SOUTH	21	3,820,403	181,924	177,440	21	21
ESSEX	NORTH	67	52,497,639	783,547	629,000	1	2
GLOUCESTER	SOUTH	82	23,444,233	285,905	290,463	19	15
HUDSON	NORTH	188	110,123,638	585,764	533,700	8	5
HUNTERDON	CENTRAL	13	6,411,168	493,167	415,000	9	10
MERCER	CENTRAL	66	20,476,974	310,257	189,990	16	20
MIDDLESEX	CENTRAL	197	91,251,051	463,203	448,221	10	9
MONMOUTH	CENTRAL	139	83,904,322	603,628	488,000	6	8
MORRIS	NORTH	58	41,354,506	713,009	526,732	3	6
OCEAN	CENTRAL	258	109,362,961	423,887	375,070	12	12
PASSAIC	NORTH	33	14,673,884	444,663	380,145	11	11
SALEM	SOUTH	6	1,827,492	304,582	308,891	17	14
SOMERSET	CENTRAL	87	52,323,470	601,419	510,370	7	7
SUSSEX	NORTH	11	4,284,646	389,513	324,164	14	13
UNION	NORTH	52	32,855,250	631,832	650,000	4	1
WARREN	NORTH	9	2,347,263	260,807	207,180	20	19
NEW JERSEY		1,802	\$924,772,797	\$513,192	\$429,450		

NOTE: This table is based on prices as reported on new home warranties submitted to the New Jersey Department of Community Affairs by new home warranty insurers. Most of the new housing built in the State must have a warranty. The exceptions are dwellings built for lease and those built by homeowners who act as their own general contractor.

MUNICIPAL SUMMARY DATA, June 2012

AREA NAME	AUTHORIZED HOUSING UNITS	AUTHORIZED HOUSING UNITS (CENSUS DEFINITIONS)	HOUSING UNITS CERTIFIED	OFFICE SPACE AUTHORIZED BY BUILDING PERMITS	RETAIL SPACE AUTHORIZED BY BUILDING PERMITS	RESI- DENTIAL (\$ AMOUNT)	NONRESI- DENTIAL (\$ AMOUNT)
Atlantic County	22	42	36	12,891	26,000	\$6,752,522	\$32,424,509
Bergen County	58	121	47	10,928	0	62,203,796	43,566,669
Burlington County	58	69	55	0	80,972	15,776,295	35,755,445
Camden County	75	120	47	462	0	11,366,317	19,288,134
Cape May County	36	36	69	0	0	13,273,409	4,623,702
Cumberland County	7	14	15	694	3,182	2,179,050	3,702,218
Essex County	64	105	34	2,801	0	41,348,860	54,865,976
Gloucester County	34	48	47	9,071	0	10,328,002	11,384,885
Hudson County	481	822	152	8,370	7,080	121,989,763	31,299,284
Hunterdon County	4	10	8	1	0	5,283,693	5,700,578
Mercer County	43	39	31	0	0	25,165,708	78,213,913
Middlesex County	187	175	92	248,430	0	32,293,911	65,549,075
Monmouth County	102	107	46	8,152	5,596	40,583,280	25,434,552
Morris County	33	83	20	10,797	0	32,496,905	39,569,480
Ocean County	155	108	123	3,683	64,346	39,633,667	47,236,536
Passaic County	28	48	12	211,317	0	9,688,934	25,644,189
Salem County	1	3	5	720	24,200	688,099	2,324,153
Somerset County	55	66	95	0	0	23,329,270	21,730,564
Sussex County	7	18	10	2,126	1	5,209,139	3,772,419
Union County	30	54	16	20,832	0	23,275,276	34,783,263
Warren County	4	10	12	2	4,002	3,225,245	4,563,980
State Buildings	0		0	0	0	3,860,000	20,734,788
New Jersey	1,484	2,098	972	551,277	215,379	\$529,951,141	\$612,168,312
NEW JERSEY 2011	11,882		10,352	4,915,544	1,680,445	\$4,832,350,928	\$6,107,458,821
NEW JERSEY 2010	11,885	13,535	11,625	5,496,579	2,192,231	4,879,205,601	4,889,436,742
NEW JERSEY 2009	11,145	10,827	14,460	4,253,888	2,248,935	4,506,768,272	5,010,957,124
NEW JERSEY 2008	16,388	18,369	18,699	7,962,998	5,557,101	5,915,342,801	8,029,191,777
NEW JERSEY 2007	25,948	25,389	23,138	9,569,501	5,423,889	8,047,734,107	7,308,838,713
NEW JERSEY 2006	32,050	34,323	28,564	11,113,555	5,186,662	8,320,885,749	7,354,222,206
NEW JERSEY 2005	39,688	38,375	31,047	11,038,132	5,965,258	9,127,194,950	6,270,312,197
NEW JERSEY 2004	39,254	35,936	27,950	12,219,068	4,961,257	7,972,659,530	6,301,672,320
NEW JERSEY 2003	35,171	32,984	26,932	9,744,146	6,038,428	6,674,318,674	5,474,429,133
NEW JERSEY 2002	34,589	30,411	29,174	9,261,054	7,560,913	6,210,486,721	5,869,455,378
NEW JERSEY 2001	35,680	28,267	30,054	19,134,533	7,244,833	5,756,546,492	6,250,910,138
NEW JERSEY 2000	38,065	34,585	29,705	15,531,039	6,063,412	5,575,603,576	5,812,079,758
NEW JERSEY 1999	37,536	31,976	28,109	13,237,891	6,226,471	5,377,163,097	5,207,004,433
NEW JERSEY 1998	35,676	31,345	28,008	12,703,824	7,921,892	4,812,845,052	4,583,910,465
NEW JERSEY 1997	30,017	28,018	34,670	10,490,171	5,688,955	4,083,041,927	4,263,491,187
Atlantic County							
Absecon City	0	0	0	0	0	121,561	145,400
Atlantic City	0	2 *	2	0	0	395,485	18,365,454
Brigantine City	0	2 *	2	0	0	752,194	119,410
Buena Borough	0	0 *	1	11,175	0	19,550	1,010,579
Buena Vista Township	0	0	1	0	0	28,738	68,093
Corbin City	0	0	0	0	0	17,000	0
Egg Harbor City	0	1 *	0	0	0	39,750	10,000
Egg Harbor Township	7	3	9	0	0	1,412,691	1,024,207
Estell Manor City	1	1	0	0	0	139,200	0
Folsom Borough	0	0	0	1,716	0	34,345	45,000
Galloway Township	1	1	3	0	0	500,101	97,103
Hamilton Township	2	6 *	5	0	26,000	412,715	9,286,737
Hammonton Township	1	1	1	0	0	568,938	98,900
Linwood City	0	1 *	0	0	0	195,938	294,181

MUNICIPAL SUMMARY DATA, June 2012

AREA NAME	AUTHORIZED HOUSING UNITS	AUTHORIZED HOUSING UNITS (CENSUS DEFINITIONS)	HOUSING UNITS CERTIFIED	OFFICE SPACE AUTHORIZED BY BUILDING PERMITS	RETAIL SPACE AUTHORIZED BY BUILDING PERMITS	RESI- DENTIAL (\$ AMOUNT)	NONRESI- DENTIAL (\$ AMOUNT)
Longport City	1	1	2	0	0	99,145	4,500
Margate City	8	8	6	0	0	1,190,328	188,006
Mullica City	0	2 *	0	0	0	71,589	525,000
Northfield City	1	1 *	2	0	0	142,513	179,200
Pleasantville City	0	11 *	1	0	0	62,050	617,504
Port Republic City	0	0	0	0	0	103,300	0
Somers Point City	0	1 *	1	0	0	178,576	299,235
Ventnor City	0	0 *	0	0	0	257,599	4,000
Weymouth Township	0	0	0	0	0	9,216	42,000
Bergen County							
Allendale Borough	3	3	1	0	0	1,328,368	753,380
Alpine Borough	0	1 *	1	0	0	97,850	94,952
Bergenfield Borough	0	0	0	0	0	367,492	1,341,146
Bogota Borough	0	1 *	0	0	0	118,235	9,796
Carlstadt Borough	0	2 *	0	0	0	63,825	517,140
Cliffside Park Borough	3	3	0	0	0	1,393,844	80,102
Closter Borough	0	0	2	0	0	543,055	311,370
Cresskill Borough	0	1 *	0	0	0	445,652	331,675
Demarest Borough	0	2 *	0	0	0	186,539	0
Dumont Borough	0	0 *	0	0	0	440,802	0
Elmwood Park Borough	0	19 *	2	0	0	907,537	169,250
East Rutherford Borough	0	0	0	0	0	288,530	436,550
Edgewater Borough	0	0	0	0	0	322,865	381,000
Emerson Borough	1	1	0	0	0	653,281	135,388
Englewood City	0	8 *	0	0	0	1,790,200	1,352,160
Englewood Cliffs Borough	0	1 *	1	0	0	313,853	666,784
Fair Lawn Borough	1	1 *	0	0	0	1,488,148	137,450
Fairview Borough	2	2	0	0	0	563,806	20,950
Fort Lee Borough	4	4	3	0	0	8,788,512	2,567,965
Franklin Lakes Borough	0	0	0	0	0	1,575,127	703,845
Garfield City	2	2	7	0	0	806,767	395,032
Glen Rock Borough	0	3 *	0	0	0	2,663,569	2,020,099
Hackensack City	0	0	0	0	0	887,987	1,448,286
Harrington Park Borough	2	2	0	0	0	1,125,272	0
Hasbrouck Heights Borough	No report	0 *	No report	No report	No report	No report	No report
Haworth Borough	0	0	0	0	0	243,199	825,650
Hillsdale Borough	3	1	1	0	0	1,376,829	132,076
Ho-Ho-Kus Borough	0	1 *	0	0	0	380,919	14,500
Leonia Borough	0	0 *	0	0	0	208,615	2,123,295
Little Ferry Borough	0	0	2	0	0	175,074	601,750
Lodi Borough	0	0	0	0	0	293,491	245,050
Lyndhurst Township	1	1	0	3,538	0	583,463	869,578
Mahwah Township	0	1 *	0	0	0	865,329	302,959
Maywood Borough	1	1	0	0	0	487,435	2,700
Midland Park Borough	0	0	0	0	0	365,499	316,400
Montvale Borough	2	2	3	1,346	0	1,610,750	844,424
Moonachie Borough	1	0	0	0	0	248,300	230,529
New Milford Borough	0	1 *	0	0	0	302,039	33,275
North Arlington Borough	0	0	0	2,044	0	436,024	1,249,850
Northvale Borough	0	2 *	0	0	0	54,923	587,023
Norwood Borough	0	1 *	0	0	0	501,165	0
Oakland Borough	0	0	0	0	0	622,917	224,275
Old Tappan Borough	1	1	1	0	0	883,245	103,600
Oradell Borough	0	1 *	0	0	0	701,105	53,987
Palisades Park Borough	10	10	10	0	0	2,237,244	108,400

MUNICIPAL SUMMARY DATA, June 2012

AREA NAME	AUTHORIZED HOUSING		HOUSING UNITS	OFFICE SPACE		RETAIL SPACE		RESI-DENTIAL	NONRESI-DENTIAL
	AUTHORIZED HOUSING UNITS	DEFINITIONS)		AUTHORIZED BY BUILDING PERMITS	PERMITS	AUTHORIZED BY BUILDING PERMITS	PERMITS		
	UNITS		CERTIFIED					(\$ AMOUNT)	(\$ AMOUNT)
Paramus Borough	2	2	1	0	0	0	0	2,128,607	10,462,465
Park Ridge Borough	1	1	0	0	0	0	0	664,650	718,395
Ramsey Borough	0	2 *	1	0	0	0	0	848,843	819,597
Ridgefield Borough	0	3 *	0	0	0	0	0	153,799	739,291
Ridgefield Park Village	0	0 *	0	0	0	0	0	221,345	81,175
Ridgewood Village	1	2 *	1	0	0	0	0	2,722,964	486,112
River Edge Borough	0	1 *	0	4,000	0	0	0	440,159	43,225
River Vale Township	10	10	1	0	0	0	0	2,335,312	31,685
Rochelle Park Township	0	0	0	0	0	0	0	135,249	1,591,179
Rockleigh Borough	0	0	0	0	0	0	0	147,300	91,500
Rutherford Borough	1	1	0	0	0	0	0	905,432	139,350
Saddle Brook Township	0	8 *	1	0	0	0	0	662,613	48,728
Saddle River Borough	0	0 *	0	0	0	0	0	2,156,974	253,354
South Hackensack Twp	0	0	0	0	0	0	0	90,318	39,300
Teaneck Township	1	0	0	0	0	0	0	1,814,561	4,175,652
Tenafly Borough	3	3	4	0	0	0	0	2,747,513	246,585
Teterboro Borough	0	0	0	0	0	0	0	0	41,450
Upper Saddle River Borough	0	1 *	0	0	0	0	0	459,553	46,700
Waldwick Borough	0	1 *	1	0	0	0	0	328,973	113,085
Wallington Borough	1	3 *	0	0	0	0	0	209,887	27,245
Washington Township	0	2 *	0	0	0	0	0	733,146	1,200
Westwood Borough	0	0	1	0	0	0	0	338,641	77,859
Woodcliff Lake Borough	0	1 *	1	0	0	0	0	200,028	279,400
Wood-Ridge Borough	0	0 *	0	0	0	0	0	169,325	73,765
Wyckoff Township	1	1	1	0	0	0	0	1,849,923	194,731
Burlington County									
Bass River Township	1	0 *	0	0	0	0	0	36,965	722,250
Beverly City	0	0 *	1	0	0	0	0	4,520	0
Bordentown City	0	0	0	0	0	0	0	169,975	854
Bordentown Township	0	0 *	0	0	0	0	0	365,894	1,362,736
Burlington City	0	0	0	0	0	0	0	91,737	86,195
Burlington Township	4	4	0	0	80,972	0	0	881,125	11,294,528
Chesterfield Township	0	4 *	3	0	0	0	0	118,235	33,800
Cinnaminson Township	35	30 *	31	0	0	0	0	2,250,647	360,665
Delanco Township	0	5 *	0	0	0	0	0	67,359	72,754
Delran Township	0	0 *	0	0	0	0	0	211,149	1,699,548
Eastampton Township	0	0	1	0	0	0	0	159,177	264,579
Edgewater Park Township	0	0	0	0	0	0	0	131,416	402,354
Evesham Township	2	7 *	5	0	0	0	0	477,874	2,931,931
Fieldsboro Borough	0	0	0	0	0	0	0	6,000	0
Florence Township	3	3	3	0	0	0	0	733,056	77,951
Hainesport Township	0	0	0	0	0	0	0	178,569	79,215
Lumberton Township	0	0	0	0	0	0	0	154,862	113,961
Mansfield Township	1	1	1	0	0	0	0	677,469	74,500
Maple Shade Borough	1	1	0	0	0	0	0	587,199	54,975
Medford Township	6	6	5	0	0	0	0	2,710,595	9,263,899
Medford Lakes Borough	0	1 *	0	0	0	0	0	94,404	3,354
Moorestown Township	0	0	0	0	0	0	0	1,248,448	3,863,448
Mount Holly Township	0	0	0	0	0	0	0	497,754	37,930
Mount Laurel Township	4	0	3	0	0	0	0	1,491,763	753,246
New Hanover Township	0	0	0	0	0	0	0	1,000	1,600
North Hanover Township	0	1 *	0	0	0	0	0	95,571	269,108
Palmyra Borough	0	1 *	0	0	0	0	0	117,201	47,900
Pemberton Borough	0	0	0	0	0	0	0	21,990	2,500
Pemberton Township	0	2 *	1	0	0	0	0	309,549	50,246

MUNICIPAL SUMMARY DATA, June 2012

AREA NAME	AUTHORIZED HOUSING		HOUSING UNITS	OFFICE SPACE		RETAIL SPACE		RESI-DENTIAL	NONRESI-DENTIAL
	AUTHORIZED HOUSING UNITS	HOUSING UNITS (CENSUS DEFINITIONS)		AUTHORIZED BY BUILDING PERMITS	BY BUILDING PERMITS	AUTHORIZED BY BUILDING PERMITS	BY BUILDING PERMITS		
	UNITS	DEFINITIONS)	CERTIFIED	PERMITS	PERMITS	PERMITS	PERMITS	(\$ AMOUNT)	(\$ AMOUNT)
Riverside Township	1	0 *	0	0	0	0	0	140,424	259,400
Riverton Borough	0	0 *	0	0	0	0	0	26,127	10,500
Shamong Township	0	1 *	0	0	0	0	0	163,489	20,500
Southampton Township	0	1 *	1	0	0	0	0	352,710	134,300
Springfield Township	0	0	0	0	0	0	0	114,000	30,400
Tabernacle Township	0	0 *	0	0	0	0	0	207,312	392,200
Washington Township	0	0	0	0	0	0	0	13,725	11,300
Westampton Township	0	0	0	0	0	0	0	168,439	42,287
Willingboro Township	0	0	0	0	0	0	0	698,566	823,030
Woodland Township	No report	1 *	No report	No report	No report	No report	No report	No report	No report
Wrightstown Borough	0	0 *	0	0	0	0	0	0	105,501
Camden County									
Audubon Borough	1	1 *	0	0	0	0	0	200,025	118,165
Audubon Park Borough	0	0	0	0	0	0	0	5000	0
Barrington Borough	0	0	0	0	0	0	0	69,340	10,094
Bellmawr Borough	0	0	0	0	0	0	0	307,837	2,254
Berlin Borough	0	0	0	0	0	0	0	305,650	367,008
Berlin Township	1	1	2	0	0	0	0	169,032	220,375
Brooklawn Borough	0	0	0	0	0	0	0	11,950	0
Camden City	0	0	0	0	0	0	0	726,737	993,298
Cherry Hill Township	68	68	3	462	0	0	0	3,804,362	3,856,136
Chesilhurst Borough	0	0 *	0	0	0	0	0	35,300	10,000
Clementon Borough	0	0 *	0	0	0	0	0	3,679	5,000
Collingswood Borough	0	0 *	2	0	0	0	0	167,068	15,950
Gibbsboro Borough	0	0 *	0	0	0	0	0	16,910	21,550
Gloucester City	0	0 *	0	0	0	0	0	149,756	38,552
Gloucester Township	0	0	0	0	0	0	0	1,026,437	6,503,334
Haddon Township	0	0 *	0	0	0	0	0	330,766	108,024
Haddonfield Borough	0	2 *	0	0	0	0	0	266,769	15,475
Haddon Heights Borough	0	7 *	6	0	0	0	0	198,230	9,350
Hi-nella Borough	0	0 *	0	0	0	0	0	0	66,600
Laurel Springs Borough	0	0 *	0	0	0	0	0	6,300	45,002
Lawnside Borough	0	0	0	0	0	0	0	1,612	174,000
Lindenwold Borough	0	11 *	0	0	0	0	0	111,273	14,150
Magnolia Borough	0	1 *	0	0	0	0	0	62,312	377,580
Merchantville Borough	0	0 *	0	0	0	0	0	362,347	0
Mount Ephraim Borough	0	0	0	0	0	0	0	106,809	6,100
Oaklyn Borough	0	0 *	0	0	0	0	0	15,920	11,855
Pennsauken Township	1	1	1	0	0	0	0	619,609	3,000,966
Pine Hill Borough	0	24 *	27	0	0	0	0	132,515	11,900
Pine Valley Borough	0	0 *	0	0	0	0	0	0	0
Runnemede Borough	0	0	0	0	0	0	0	67,284	8,606
Somerdale Borough	0	0	1	0	0	0	0	103,890	79,500
Stratford Borough	1	0	0	0	0	0	0	49,756	6,000
Tavistock Borough	0	0	0	0	0	0	0	0	0
Voorhees Township	0	1 *	0	0	0	0	0	695,435	860,695
Waterford Township	3	3	3	0	0	0	0	510,025	727,725
Winslow Township	0	0	2	0	0	0	0	613,651	1,602,890
Woodlynne Borough	0	0	0	0	0	0	0	112,731	0
Cape May County									
Avalon Borough	3	3	9	0	0	0	0	1,833,616	21,150
Cape May City	1	1	1	0	0	0	0	647,529	50,202
Cape May Point Borough	0	0	0	0	0	0	0	31,550	0
Dennis Township	0	1 *	0	0	0	0	0	118,851	70,100
Lower Township	1	0	0	0	0	0	0	525,462	703,463

MUNICIPAL SUMMARY DATA, June 2012

AREA NAME	AUTHORIZED HOUSING UNITS	AUTHORIZED HOUSING UNITS (CENSUS DEFINITIONS)	HOUSING UNITS CERTIFIED	OFFICE SPACE AUTHORIZED BY BUILDING PERMITS	RETAIL SPACE AUTHORIZED BY BUILDING PERMITS	RESI- DENTIAL (\$ AMOUNT)	NONRESI- DENTIAL (\$ AMOUNT)
Middle Township	5	5	8	0	0	1,045,458	99,051
North Wildwood City	0	0	1	0	0	196,263	91,927
Ocean City	10	10	24	0	0	3,240,806	208,376
Sea Isle City	6	6	15	0	0	1,450,765	60,463
Stone Harbor Borough	2	2	5	0	0	822,940	57,127
Upper Township	0	1 *	1	0	0	151,648	3,090,430
West Cape May Borough	0	0	0	0	0	50,850	26,480
West Wildwood Borough	0	0	0	0	0	176,051	0
Wildwood City	4	3	0	0	0	1,300,856	70,167
Wildwood Crest Borough	4	4	4	0	0	1,581,497	24,116
Woodbine Borough	0	0	1	0	0	99,267	50,650
Cumberland County							
Bridgeton City	0	2 *	0	0	0	175,467	663,611
Commercial Township	0	2 *	0	0	0	28,256	21,200
Deerfield Township	0	1 *	0	0	0	48,710	901,560
Downe Township	0	0	0	0	0	11,610	3,500
Fairfield Township	0	0	0	0	0	0	35,800
Greenwich Township	No report	0 *	0	No report	No report	No report	No report
Hopewell Township	0	1 *	1	0	0	30,187	30,150
Lawrence Township	0	0	0	0	0	52,700	0
Maurice River Township	0	1 *	0	0	0	140,000	11,397
Millville City	2	2	0	0	0	676,065	818,826
Shiloh Borough	No report	0 *	0	No report	No report	No report	No report
Stow Creek Township	0	0	0	0	0	2,000	0
Upper Deerfield Township	0	1 *	0	0	0	60,367	39,445
Vineland City	5	4	14	694	3,182	953,688	1,176,729
Essex County							
Belleville Town	0	0	0	0	0	578,048	37,245
Bloomfield Township	0	0 *	0	0	0	3,634,512	0
Caldwell Township	0	0 *	0	0	0	7,663,684	506,802
Cedar Grove Township	0	2 *	0	0	0	197,376	6,641,695
East Orange City	0	0	0	0	0	526,365	21,333,950
Essex Fells Township	0	0 *	0	0	0	617,314	2,000
Fairfield Township	0	0	1	0	0	274,682	1,648,640
Glen Ridge Borough	0	1 *	0	0	0	666,094	0
Irvington Township	10	0 *	0	0	0	1,305,497	391,850
Livingston Township	2	2	3	0	0	3,589,916	3,738,837
Maplewood Township	1	6 *	0	0	0	862,758	500,610
Millburn Township	1	1	3	0	0	2,246,437	2,353,997
Montclair Township	2	2	0	1	0	3,344,147	967,046
Newark City	40	40	18	2,800	0	10,199,525	9,670,906
North Caldwell Borough	6	6	5	0	0	1,867,729	1
Nutley Township	0	2 *	0	0	0	508,385	587,067
City of Orange Township	0	40 *	0	0	0	136,561	90,220
Roseland Borough	0	1 *	0	0	0	332,124	416,800
South Orange Village	0	0	0	0	0	563,748	4,629,252
Verona Township	0	0 *	1	0	0	408,542	7,150
West Caldwell Township	0	0 *	0	0	0	568,701	116,200
West Orange Township	2	2	3	0	0	1,256,715	1,225,708
Gloucester County							
Clayton Borough	0	1 *	2	0	0	76,248	34,236
Deptford Township	2	2	3	0	0	630,720	3,037,403
East Greenwich Township	4	10 *	7	0	0	558,621	64,844
Elk Township	0	0	0	0	0	229,050	59,675
Franklin Township	2	2	0	0	0	685,298	18,252

MUNICIPAL SUMMARY DATA, June 2012

AREA NAME	AUTHORIZED HOUSING UNITS	AUTHORIZED HOUSING UNITS (CENSUS DEFINITIONS)	HOUSING UNITS CERTIFIED	OFFICE SPACE AUTHORIZED BY BUILDING PERMITS	RETAIL SPACE AUTHORIZED BY BUILDING PERMITS	RESI- DENTIAL (\$ AMOUNT)	NONRESI- DENTIAL (\$ AMOUNT)
Glassboro Borough	5	5	6	0	0	773,892	88,704
Greenwich Township	0	1 *	0	0	0	59,621	228,525
Harrison Township	9	9	6	0	0	2,559,854	221,901
Logan Township	0	0	1	0	0	871,533	1,382,067
Mantua Township	0	0	0	0	0	277,465	46,650
Monroe Township	2	2	5	5,586	0	827,641	1,206,065
National Park Borough	0	0	0	0	0	38,344	25,894
Newfield Borough	No report	0 *	No report	No report	No report	No report	No report
Paulsboro Borough	0	1 *	0	0	0	64,000	438,000
Pitman Borough	0	1 *	0	0	0	303,050	42,055
South Harrison Township	0	0	0	0	0	27,050	8,500
Swedesborough Borough	0	4 *	0	0	0	0	108,065
Washington Township	0	0	0	0	0	437,379	777,586
Wenonah Borough	0	0 *	0	0	0	22,698	1
West Deptford Township	0	0	0	3,485	0	395,776	1,460,596
Westville Borough	0	0 *	0	0	0	42,133	22,100
Woodbury City	0	0 *	0	0	0	124,749	599,550
Woodbury Heights Borough	0	0 *	0	0	0	40,530	474,500
Woolwich Township	10	10	17	0	0	1,282,350	1,039,716
Hudson County							
Bayonne City	2	9 *	4	8,370	0	1,421,680	3,614,899
East Newark Borough	0	0	0	0	0	5,349	40,771
Guttenberg Town	2	0	0	0	0	287,268	29,450
Harrison Town	0	0	0	0	0	98,800	54,951
Hoboken City	0	54 *	0	0	0	3,365,782	766,925
Jersey City	474	473	4	0	7,080	51,486,657	18,565,459
Kearny Town	3	0 *	0	0	0	606,230	680,681
North Bergen Township	0	0 *	0	0	0	713,221	3,521,990
Secaucus Town	0	68 *	116	0	0	299,454	1,740,888
Union City	0	2 *	2	0	0	932,773	1,138,125
Weehawken Township	0	216	0	0	0	62,517,527	390,845
West New York Town	0	0	26	0	0	255,022	754,300
Hunterdon County							
Alexandria Township	1	0	0	0	0	525,371	102,745
Bethlehem Township	0	0	0	0	0	38,300	138,388
Bloomsbury Borough	0	0	0	0	0	6,600	75,000
Califon Borough	0	0	0	0	0	500	0
Clinton Town	0	0	0	0	0	61,723	55,128
Clinton Township	0	0	0	0	0	451,596	136,138
Delaware Township	0	0 *	0	0	0	349,740	100,586
East Amwell Township	0	0 *	1	0	0	87,104	101,649
Flemington Borough	0	5 *	0	0	0	51,400	847,179
Franklin Township	0	0	0	0	0	302,316	147,520
Frenchtown Borough	0	0	0	0	0	12,480	1,997
Glen Gardner Borough	0	0	0	0	0	33,150	52,430
Hampton Borough	0	0	0	0	0	6,920	54,085
High Bridge Borough	0	0	0	0	0	170,492	110,800
Holland Township	0	0	1	0	0	54,247	26,490
Kingwood Township	0	1 *	0	0	0	240,071	26,900
Lambertville City	0	0	0	0	0	403,720	13,213
Lebanon Borough	0	0	0	0	0	66,835	4,185
Lebanon Township	1	1	0	0	0	279,001	165,595
Milford Borough	0	0	0	0	0	14,500	50,468
Raritan Township	0	0	5	0	0	750,949	2,215,811
Readington Township	1	1	0	1	0	771,992	925,109

MUNICIPAL SUMMARY DATA, June 2012

AREA NAME	AUTHORIZED			OFFICE SPACE		RETAIL SPACE		RESI- DENTIAL (\$ AMOUNT)	NONRESI- DENTIAL (\$ AMOUNT)
	AUTHORIZED	HOUSING UNITS	HOUSING	AUTHORIZED	AUTHORIZED				
	HOUSING	(CENSUS	UNITS	BY BUILDING	BY BUILDING				
UNITS	DEFINITIONS)	CERTIFIED	PERMITS	PERMITS					
Stockton Borough	0	1 *	0	0	0	24,500	0		
Tewksbury Township	1	1	1	0	0	460,688	132,825		
Union Township	0	0	0	0	0	30,574	85,810		
West Amwell Township	0	0	0	0	0	88,924	130,527		
Mercer County									
East Windsor Township	1	1	1	0	0	902,968	127,851		
Ewing Township	0	3	0	0	0	1,103,903	14,171,878		
Hamilton Township	6	2	9	0	0	3,730,651	1,982,923		
Hightstown Borough	0	0 *	0	0	0	104,220	0		
Hopewell Borough	0	0	0	0	0	380,253	51,634		
Hopewell Township	0	0	0	0	0	842,083	186,475		
Lawrence Township	0	0	0	0	0	1,289,945	17,364,548		
Pennington Borough	0	0	0	0	0	167,500	7,445		
Princeton Borough	1	1	0	0	0	5,903,670	9,590,025		
Princeton Township	5	5	0	0	0	5,092,780	4,941,806		
Trenton City	3	2	0	0	0	1,548,869	7,256,970		
Robbinsville Township	2	0	1	0	0	980,831	19,410,597		
West Windsor Township	25	25	20	0	0	3,118,035	3,121,761		
Middlesex County									
Carteret Borough	0	23 *	0	245,934	0	485,878	1,404,889		
Cranbury Township	0	0 *	0	0	0	218,758	933,685		
Dunellen Borough	0	6 *	0	0	0	36,217	159,469		
East Brunswick Township	0	0	1	0	0	1,756,921	1,348,509		
Edison Township	2	2	2	0	0	2,063,521	2,602,489		
Helmetta Borough	0	0	0	0	0	19,370	0		
Highland Park Borough	0	8 *	0	0	0	0	297,934		
Jamesburg Borough	0	0	0	0	0	144,809	33,699		
Old Bridge Township	0	0	4	2,496	0	1,493,936	735,579		
Metuchen Borough	0	0	0	0	0	642,543	66,665		
Middlesex Borough	0	0 *	0	0	0	349,193	131,283		
Milltown Borough	0	0 *	0	0	0	106,164	62,000		
Monroe Township	36	36	21	0	0	6,290,984	2,683,387		
New Brunswick City	0	19 *	0	0	0	299,570	9,017,904		
North Brunswick Township	15	15	0	0	0	2,496,850	355,495		
Perth Amboy City	0	0	21	0	0	185,829	1,831,358		
Piscataway Township	51	50	5	0	0	6,693,170	5,830,423		
Plainsboro Township	0	0	3	0	0	629,122	22,988,358		
Sayreville Borough	2	2	4	0	0	1,249,191	891,490		
South Amboy City	0	0 *	0	0	0	173,557	14,000		
South Brunswick Township	14	13	6	0	0	3,403,705	1,704,989		
South Plainfield Borough	2	0	0	0	0	438,734	3,378,944		
South River Borough	0	0	0	0	0	315,024	44,019		
Spotswood Borough	0	1 *	0	0	0	87,532	2,730,925		
Woodbridge Township	65	0	25	0	0	2,713,333	6,301,582		
Monmouth County									
Allenhurst Borough	0	0	0	0	0	68,625	2,000		
Allentown Borough	0	0	0	0	0	56,057	132,200		
Asbury Park City	0	1 *	0	0	0	340,761	204,457		
Atlantic Highlands Borough	0	0	0	0	0	228,255	2,600		
Avon-by-the-Sea Borough	1	1	0	0	0	654,293	45,424		
Belmar Borough	1	1	2	0	0	308,004	398,651		
Bradley Beach Borough	0	0	0	0	0	242,579	49,800		
Brielle Borough	1	1	2	1	0	520,180	47,950		
Colts Neck Township	1	1	0	0	0	992,575	117,129		
Deal Borough	1	0 *	1	0	0	2,270,785	87,800		

MUNICIPAL SUMMARY DATA, June 2012

AREA NAME	AUTHORIZED HOUSING UNITS	AUTHORIZED HOUSING UNITS (CENSUS DEFINITIONS)	HOUSING UNITS CERTIFIED	OFFICE SPACE AUTHORIZED BY BUILDING PERMITS	RETAIL SPACE AUTHORIZED BY BUILDING PERMITS	RESI- DENTIAL (\$ AMOUNT)	NONRESI- DENTIAL (\$ AMOUNT)
Eatontown Borough	0	1 *	0	0	0	195,568	352,439
Englishtown Borough	1	1	0	0	0	214,870	29,200
Fair Haven Borough	3	3	1	0	0	1,785,054	4,000
Farmingdale Borough	0	0	0	0	0	40,535	0
Freehold Borough	0	1 *	0	0	0	154,064	231,621
Freehold Township	0	0	0	2,960	0	1,007,556	3,025,704
Highlands Borough	1	1	0	1	4,543	239,460	803,550
Holmdel Township	1	1 *	0	0	0	1,340,537	313,900
Howell Township	38	38	4	0	0	4,218,467	521,122
Interlaken Borough	0	0	0	0	0	30,650	0
Keansburg Borough	2	1	0	0	0	361,884	21,100
Keyport Borough	0	1 *	0	0	0	70,386	410,765
Little Silver Borough	0	2 *	2	0	0	537,241	263,736
Loch Arbour Village	0	0	0	0	0	10,650	0
Long Branch City	12	12	2	0	0	2,372,192	2,640,026
Manalapan Township	9	2	5	0	0	3,039,876	441,200
Manasquan Borough	1	1	3	0	0	743,437	129,676
Marlboro Township	8	8	4	0	0	2,136,764	572,432
Matawan Borough	0	0	0	0	0	115,683	163,860
Aberdeen Township	2	0	3	1,990	0	476,536	1,712,300
Middletown Township	2	2	3	3,200	0	2,924,827	3,987,176
Millstone Township	0	0	0	0	0	214,546	156,748
Monmouth Beach Borough	0	0	1	0	0	299,192	133,201
Neptune Township	0	0 *	0	0	0	839,884	1,696,896
Neptune City Borough	0	0	0	0	0	56,573	145,257
Tinton Falls Borough	0	2 *	0	0	0	488,446	2,437,800
Ocean Township	0	0	0	0	0	614,699	430,881
Oceanport Borough	0	0	0	0	0	256,710	142,325
Hazlet Township	0	0	1	0	0	544,803	599,800
Red Bank Borough	0	1 *	3	0	0	452,049	260,381
Roosevelt Borough	0	0 *	0	0	0	7,300	0
Rumson Borough	1	1	1	0	0	1,869,383	20,500
Sea Bright Borough	10	1	0	0	0	486,767	5,000
Sea Girt Borough	2	2	0	0	0	2,208,891	5,750
Shrewsbury Borough	0	4 *	0	0	0	129,935	881,485
Shrewsbury Township	0	0	0	0	0	10,950	0
Lake Como Borough	0	0	0	0	0	108,659	2,000
Spring Lake Borough	2	2	1	0	0	2,210,599	130,800
Spring Lake Heights Boro	0	0	2	0	0	143,535	80,550
Union Beach Borough	0	0	0	0	0	128,482	0
Upper Freehold Township	0	0	4	0	1,053	131,280	241,655
Wall Township	2	2	1	0	0	1,682,246	1,351,705
West Long Branch Borough	No report	12 *	No report	No report	No report	No report	No report
Morris County							
Boonton Town	0	1 *	1	0	0	303,650	117,600
Boonton Township	1	2 *	0	0	0	622,437	0
Butler Borough	0	0	0	2,896	0	433,429	180,350
Chatham Borough	2	2	1	0	0	2,031,944	702,000
Chatham Township	3	3	0	0	0	4,088,730	15,000
Chester Borough	0	8 *	0	0	0	66,890	78,991
Chester Township	0	0	0	0	0	390,548	51,302
Denville Township	1	2 *	2	0	0	1,186,593	445,686
Dover Town	0	0	0	0	0	312,118	432,439
East Hanover Township	0	1 *	0	0	0	244,183	2,668,015
Florham Park Borough	6	28	2	0	0	4,050,876	3,252,675

MUNICIPAL SUMMARY DATA, June 2012

AREA NAME	AUTHORIZED HOUSING UNITS	AUTHORIZED HOUSING UNITS (CENSUS DEFINITIONS)	HOUSING UNITS CERTIFIED	OFFICE SPACE AUTHORIZED BY BUILDING PERMITS	RETAIL SPACE AUTHORIZED BY BUILDING PERMITS	RESI- DENTIAL (\$ AMOUNT)	NONRESI- DENTIAL (\$ AMOUNT)
Hanover Township	3	0 *	0	0	0	1,154,835	6,485,023
Harding Township	0	0	1	0	0	364,014	39,201
Jefferson Township	0	0 *	0	0	0	402,729	705,125
Kinnelon Borough	0	2 *	1	0	0	363,693	34,790
Lincoln Park Borough	0	0	0	0	0	269,357	132,500
Madison Borough	2	2	1	0	0	2,286,039	126,700
Mendham Borough	0	0	0	0	0	193,625	67,115
Mendham Township	0	0	0	0	0	701,594	92,642
Mine Hill Township	0	0 *	0	0	0	128,140	0
Montville Township	2	2	0	0	0	1,341,501	269,255
Morris Township	0	3 *	0	0	0	1,082,195	187,104
Morris Plains Borough	0	2 *	1	0	0	298,960	98,872
Morristown Town	0	0	1	0	0	676,241	2,036,836
Mountain Lakes Borough	0	1 *	0	0	0	159,653	67,800
Mount Arlington Borough	0	7 *	2	0	0	64,594	10,984
Mount Olive Township	3	3	3	0	0	1,150,208	1,035,650
Netcong Borough	0	0 *	0	0	0	2,320	5,400
Parsippany-Troy Hills Twp	2	2	0	1,792	0	1,817,145	2,221,927
Long Hill Township	1	1	0	0	0	1,037,508	11,575
Pequannock Township	0	2 *	0	0	0	908,166	307,935
Randolph Township	2	2	0	0	0	1,447,910	13,372,043
Riverdale Borough	0	0	2	0	0	19,628	10,450
Rockaway Borough	0	0	0	6,109	0	143,375	324,900
Rockaway Township	0	2 *	0	0	0	638,679	2,659,645
Roxbury Township	5	5	0	0	0	1,108,062	1,240,850
Victory Gardens Borough	0	0	0	0	0	13,400	0
Washington Township	0	0	2	0	0	941,818	37,900
Wharton Borough	0	0 *	0	0	0	50,118	43,200
Ocean County							
Barnegat Light Borough	0	0	0	0	0	23,900	7,249
Bay Head Borough	0	0	0	0	0	514,385	0
Beach Haven Borough	1	1	1	0	0	400,795	190,100
Beachwood Borough	0	0	0	0	0	396,734	52,080
Berkeley Township	6	7 *	3	0	0	2,391,624	4,503
Brick Township	69	18	8	0	37,946	8,667,630	33,693,552
Toms River Township	4	14 *	18	0	26,400	3,110,329	3,145,315
Eagleswood Township	1	1	0	0	0	268,675	202
Harvey Cedars Borough	0	0	2	0	0	79,150	0
Island Heights Borough	0	0	0	0	0	140,707	0
Jackson Township	2	9 *	13	0	0	2,078,156	2,226,329
Lacey Township	1	1	4	0	0	1,038,463	157,069
Lakehurst Borough	0	0	0	0	0	9,375	20,500
Lakewood Township	15	6	27	3,683	0	3,141,305	2,454,155
Lavallette Borough	1	1	4	0	0	514,685	17,500
Little Egg Harbor Township	4	2	4	0	0	935,418	2,780
Long Beach Township	2	2	7	0	0	1,795,684	6,800
Manchester Township	2	0	4	0	0	1,751,721	183,176
Mantoloking Borough	0	0	0	0	0	414,355	0
Ocean Township	8	8	1	0	0	1,573,168	50
Ocean Gate Borough	0	0	0	0	0	33,300	17,200
Pine Beach Borough	0	0 *	0	0	0	243,700	0
Plumsted Township	1	1	0	0	0	388,245	708,118
Point Pleasant Borough	1	1	2	0	0	1,049,983	256,024
Point Pleasant Beach Boro	1	1	1	0	0	2,028,154	172,753
Seaside Heights Borough	0	0 *	0	0	0	47,359	372,255

MUNICIPAL SUMMARY DATA, June 2012

AREA NAME	AUTHORIZED HOUSING UNITS	AUTHORIZED HOUSING UNITS (CENSUS DEFINITIONS)	HOUSING UNITS CERTIFIED	OFFICE SPACE AUTHORIZED BY BUILDING PERMITS	RETAIL SPACE AUTHORIZED BY BUILDING PERMITS	RESI- DENTIAL (\$ AMOUNT)	NONRESI- DENTIAL (\$ AMOUNT)
Seaside Park Borough	0	0	1	0	0	212,690	25,365
Ship Bottom Borough	1	1	1	0	0	507,005	223,270
South Toms River Borough	0	0	0	0	0	18,618	854
Stafford Township	29	29	9	0	0	3,932,762	451,567
Surf City Borough	1	1	2	0	0	718,897	45,500
Tuckerton Borough	0	0 *	2	0	0	0	140,190
Barneгат Township	5	4	9	0	0	1,206,695	2,662,080
Passaic County							
Bloomingtondale Borough	0	0	1	0	0	73,608	46,000
Clifton City	1	1	0	211,317	0	1,426,636	12,431,220
Haledon Borough	0	0	0	0	0	114,949	5,500
Hawthorne Borough	0	0	0	0	0	617,531	2,906
Little Falls Township	0	0	0	0	0	517,874	2,355,976
North Haledon Borough	0	0	0	0	0	175,915	0
Passaic City	24	20	0	0	0	1,854,718	346,908
Paterson City	No report	1 *	No report	No report	No report	No report	No report
Pompton Lakes Borough	0	0 *	0	0	0	195,546	12,600
Prospect Park Borough	0	0 *	0	0	0	33,828	0
Ringwood Borough	0	1 *	0	0	0	357,093	7,198,875
Totowa Borough	0	1 *	0	0	0	368,476	228,930
Wanaque Borough	0	0	2	0	0	179,718	107,990
Wayne Township	3	2	3	0	0	2,828,389	2,617,348
West Milford Township	0	1 *	2	0	0	705,454	178,303
Woodland Park Borough	0	21 *	4	0	0	239,199	111,633
Salem County							
Alloway Township	0	0	0	0	0	26,500	0
Elmer Borough	0	0	0	0	0	15,071	24,225
Elsinboro Township	0	0	0	0	0	13,950	4,000
Lower Alloways Creek Twp	0	0	0	0	0	27,583	845,422
Mannington Township	0	0	0	0	0	5,400	16,181
Oldmans Township	1	1	0	0	0	139,098	15,100
Penns Grove Borough	0	0	0	0	0	1,850	76,500
Pennsville Township	0	0	0	0	0	168,111	366,830
Pilesgrove Township	0	0	1	0	0	72,150	24,505
Pittsgrove Township	0	0	0	0	0	43,730	279,631
Quinton Township	0	0	0	0	24,200	31,939	270,050
Salem City	0	0	0	0	0	31,000	12,885
Carneys Point Township	0	2 *	3	0	0	41,800	78,225
Upper Pittsgrove Township	0	0	1	0	0	25,307	278,299
Woodstown Borough	0	0	0	720	0	44,610	32,300
Somerset County							
Bedminster Township	0	1	0	0	0	389,373	834,731
Bernards Township	2	2	0	0	0	2,050,365	979,520
Bernardsville Borough	1	1 *	0	0	0	484,040	1,082,450
Bound Brook Borough	0	7 *	2	0	0	79,558	29,125
Branchburg Township	0	0	0	0	0	603,412	1,337,424
Bridgewater Township	0	0	37	0	0	1,390,197	8,839,602
Far Hills Borough	0	0	0	0	0	52,900	14,900
Franklin Township	19	19	42	0	0	4,409,909	1,849,168
Green Brook Township	1	1	0	0	0	440,700	114,060
Hillsborough Township	19	7 *	6	0	0	6,907,843	698,684
Manville Borough	0	0	0	0	0	225,851	23,547
Millstone Borough	0	0	0	0	0	200	4,300
Montgomery Township	3	3	0	0	0	1,457,758	1,734,755
North Plainfield Borough	No report	0 *	No report	No report	No report	No report	No report

MUNICIPAL SUMMARY DATA, June 2012

AREA NAME	AUTHORIZED HOUSING UNITS	AUTHORIZED HOUSING UNITS (CENSUS DEFINITIONS)	HOUSING UNITS CERTIFIED	OFFICE SPACE AUTHORIZED BY BUILDING PERMITS	RETAIL SPACE AUTHORIZED BY BUILDING PERMITS	RESI- DENTIAL (\$ AMOUNT)	NONRESI- DENTIAL (\$ AMOUNT)
Peapack-Gladstone Borough	1	0 *	0	0	0	452,268	69,534
Raritan Borough	0	13 *	0	0	0	192,163	291,200
Rocky Hill Borough	0	0	0	0	0	15,200	12,000
Somerville Borough	0	0 *	0	0	0	227,668	215,165
South Bound Brook Boro	0	3 *	0	0	0	35,131	3,900
Warren Township	7	7	8	0	0	3,101,662	3,544,544
Watchung Borough	2	2	0	0	0	813,072	51,955
Sussex County							
Andover Borough	0	0 *	0	0	0	8,100	3,500
Andover Township	0	0	0	0	1	144,203	38,900
Branchville Borough	0	0	0	0	0	1,810	900
Byram Township	0	0 *	0	0	0	239,140	113,902
Frankford Township	3	3	2	0	0	1,124,605	27,051
Franklin Borough	0	0	0	0	0	67,676	194,000
Fredon Township	0	0	0	0	0	77,818	11,223
Green Township	0	2 *	0	0	0	17,200	164,900
Hamburg Borough	0	0	0	0	0	22,860	60,000
Hampton Township	0	0	0	0	0	57,975	543,675
Hardyston Township	0	0	1	0	0	349,465	28,300
Hopatcong Borough	0	1 *	0	0	0	260,028	206,511
Lafayette Township	0	0	0	0	0	32,650	25,880
Montague Township	2	2	0	0	0	76,375	85,500
Newton Town	0	0	0	0	0	169,275	163,607
Ogdensburg Borough	0	0 *	0	0	0	8,600	15,326
Sandyston Township	0	0	0	0	0	86,550	21,700
Sparta Township	1	1	5	2,126	0	1,518,616	1,230,337
Stanhope Borough	0	0 *	0	0	0	208,818	0
Stillwater Township	1	1	0	0	0	152,924	0
Sussex Borough	0	0	0	0	0	24,550	62,050
Vernon Township	0	7 *	0	0	0	506,701	516,840
Walpack Township	0	0 *	0	0	0	0	1
Wantage Township	0	1 *	2	0	0	53,200	258,316
Union County							
Berkeley Heights Township	1	1	0	0	0	985,709	6,432,266
Clark Township	0	1 *	1	11,305	0	343,490	872,562
Cranford Township	0	8 *	0	0	0	1,196,701	472,911
Elizabeth City	8	12 *	1	0	0	1,350,182	12,890,057
Fanwood Borough	1	1	0	0	0	303,666	2,593
Garwood Borough	1	10 *	0	0	0	70,935	897,475
Hillside Township	0	0	0	0	0	176,834	1,186,107
Kenilworth Borough	0	0	0	0	0	250,099	7,950
Linden City	2	2	1	0	0	810,978	314,720
Mountainside Borough	1	1	1	0	0	1,011,791	16,511
New Providence Borough	0	2 *	0	0	0	789,696	484,111
Plainfield City	0	0 *	0	0	0	686,732	41,215
Rahway City	0	0	1	0	0	599,407	371,910
Roselle Borough	0	0	0	0	0	633,696	1,201,000
Roselle Park Borough	0	1 *	0	0	0	134,167	62,055
Scotch Plains Township	1	1	2	0	0	1,325,329	1,960,820
Springfield Township	6	6	8	0	0	1,397,946	392,599
Summit City	5	5	0	0	0	5,666,185	438,019
Union Township	0	0	0	9,527	0	921,671	4,876,092
Westfield Town	4	3 *	1	0	0	4,619,262	1,862,290
Winfield Township	0	0	0	0	0	800	0
Warren County							

MUNICIPAL SUMMARY DATA, June 2012

AREA NAME	AUTHORIZED HOUSING UNITS		HOUSING UNITS CERTIFIED	OFFICE SPACE		RETAIL SPACE		RESI-DENTIAL (\$ AMOUNT)	NONRESI-DENTIAL (\$ AMOUNT)
	AUTHORIZED HOUSING UNITS	(CENSUS DEFINITIONS)		AUTHORIZED BY BUILDING PERMITS	AUTHORIZED BY BUILDING PERMITS	AUTHORIZED BY BUILDING PERMITS	AUTHORIZED BY BUILDING PERMITS		
Allamuchy Township	0	0	6	0	0	0	0	0	1,292,787
Alpha Borough	0	0	0	0	0	0	0	65,634	6,800
Belvidere Town	No report	0 *	No report	No report	No report	No report	No report	No report	No report
Blairstown Township	0	0	0	0	0	0	0	8,250	538,118
Franklin Township	0	0	1	0	0	0	0	44,829	385,967
Frelinghuysen Township	0	0	0	0	0	0	0	60,050	18,148
Greenwich Township	0	0	0	0	0	0	0	45,750	60,804
Hackettstown Town	0	3 *	0	0	0	0	0	46,000	265,673
Hardwick Township	0	0	0	0	0	0	0	8,248	7,650
Harmony Township	0	0	0	0	0	0	0	19,000	48,176
Hope Township	1	1	0	0	0	0	0	729,738	103,700
Independence Township	0	1 *	1	0	0	0	0	34,868	46,775
Knowlton Township	1	1	0	0	0	0	0	170,496	30,986
Liberty Township	0	0 *	0	0	0	0	0	29,700	16,550
Lopatcong Township	2	2	4	0	0	0	0	595,922	81,542
Mansfield Township	0	0	0	0	0	0	0	904,760	640,900
Oxford Township	0	0	0	0	0	0	0	24,500	6,400
Pahaquary Township	See Hardwick Twp.								
Phillipsburg Town	0	1 *	0	0	0	0	0	144,276	83,200
Pohatcong Township	0	1 *	0	0	0	0	0	53,516	42,000
Washington Borough	0	0	0	0	0	0	0	62,342	89,000
Washington Township	0	0	0	0	0	4,002	0	146,836	557,418
White Township	0	0	0	2	0	0	0	30,530	241,386
State Buildings	0		0	0	0	0	0	3,860,000	20,734,788

The New Jersey
CONSTRUCTION REPORTER
JUNE 2012 DATA

DISTRIBUTED BY THE

New Jersey Department of
COMMUNITY AFFAIRS

DIVISION OF CODES AND STANDARDS

101 South Broad Street,

PO Box 802

Trenton, NJ 08625-0802

(609) 292-7898

www.nj.gov/dca/divisions/codes/reporter/



In cooperation with the
STATE DATA CENTER of the
NEW JERSEY DEPARTMENT OF LABOR AND
WORKFORCE DEVELOPMENT

Production and Distribution Staff

RICHARD BYRNE

CYNTHIA CORDERO

LYNN FERRARA

AMY FENWICK FRANK

JOHN LAGO

CHARLES PIERSON, JR.

ANTHONY SCHIAVINO

SUSAN WOIDILL

2012