



State of New Jersey

19-2450-050

KINGWOOD TWP

880 COUNTY ROAD 519

FRENCHTOWN, NJ 08825-9731

OVERVIEW

HUNTERDON

KINGWOOD TWP

GRADE SPAN PK-08

This school's academic performance is **high when compared** to schools across the state. Additionally, its academic performance **significantly lags in comparison** to its peers. This school's college and career readiness is **high when compared** to schools across the state. Additionally, its college and career readiness is **high when compared** to its peers. This school's student growth performance is **about average when compared** to schools across the state. Additionally, its student growth performance **lags in comparison** to its peers.

Performance Areas	Peer Rank (Percentile)	Statewide Rank (Percentile)	Percent of Targets Met
Academic Achievement	14	67	100%
College and Career Readiness	61	69	100%
Student Growth	24	53	100%

Improvement Status

N/A

Rationale

N/A

**Very High Performance** is defined as being equal to or above the 80.0th percentile.

**High Performance** is defined as being between the 60.0th and 79.9th percentiles.

**Average Performance** is defined as being between the 40.0th and 59.9th percentiles.

**Lagging Performance** is defined as being between the 20.0th and 39.9th percentiles.

**Significantly Lagging Performance** is defined as being equal to or below the 19.9th percentile.

**Peer Schools** are schools that have similar grade levels and students with similar demographic characteristics, such as the percentage of students qualifying for Free/Reduced Lunch, Limited English Proficiency programs or Special Education programs.

Academic Achievement

This school outperforms **67%** of schools statewide as noted by its statewide percentile ranking and **14%** of schools educating students with similar demographic characteristics as noted in its peer school percentile ranking in the performance area of Academic Achievement. Additionally, this school is meeting **100%** of its performance targets in the area of Academic Achievement.



Academic Achievement measures the content knowledge students have in language arts literacy and math. For elementary and middle schools, this includes measures of the school's proficiency rate on both the Language Arts Literacy and Math sections of the New Jersey Assessment of Skills and Knowledge (NJ ASK). A proficiency rate is calculated by summing the count of students who scored either proficient or advanced proficient on the assessment and dividing by the count of valid test scores.

College and Career Readiness

This school outperforms **69%** of schools statewide as noted by its statewide percentile ranking and **61%** of schools educating students with similar demographic characteristics as noted in its peer school percentile ranking in the performance area of College and Career Readiness. Additionally, this school is meeting **100%** of its performance targets in the area of College and Career Readiness.



College and Career readiness measures the degree to which students are demonstrating behaviors that are indicative of future attendance and/or success in college and careers. For all elementary and middle schools, this includes a measurement of how many students are chronically absent. For schools with middle school grades, it also includes a measurement of how many students take Algebra I in either seventh or eighth grade.

Student Growth

This school outperforms **53%** of schools statewide as noted by its statewide percentile ranking and **24%** of schools educating students with similar demographic characteristics as noted in its peer school percentile ranking in the performance area of Student Growth. Additionally, this school is meeting **100%** percentage of its performance targets in the area of Student Growth.



Student Growth measures the performance of students from one year to the next on the New Jersey Assessment of Skills and Knowledge (NJ ASK) in Language Arts Literacy and Math when compared to students with a similar history of performance on NJ-ASK.



**DEMOGRAPHIC INFORMATION**

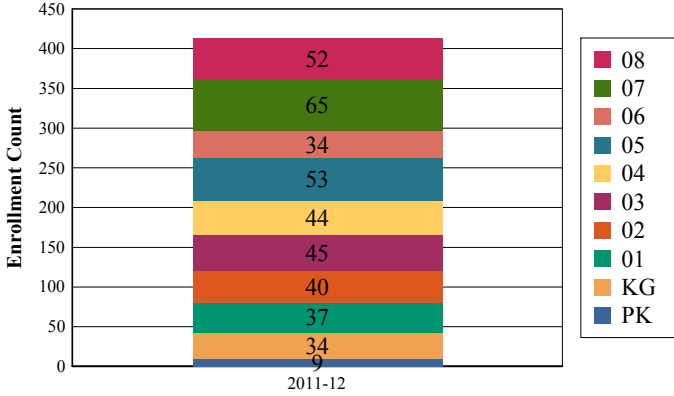
HUNTERDON

KINGWOOD TWP

GRADE SPAN PK-08

**Enrollment by Grade**

This graph presents the count of students who were 'on roll' by grade in October of each school year.



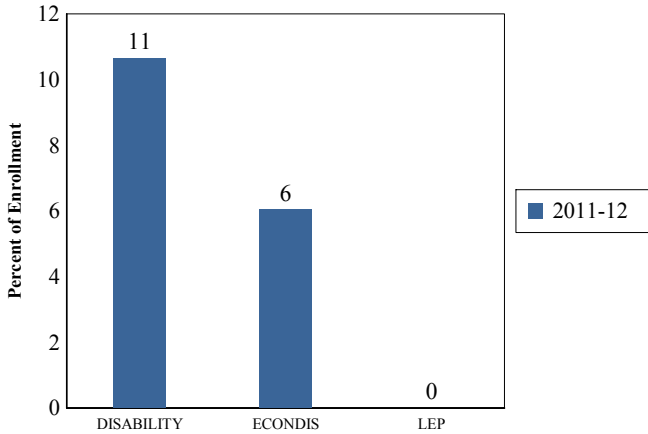
Total School Enrollment Trends

Note: "UG" represents the count of students who are 'on roll' in this school but who are educated in ungraded classrooms, meaning that the classrooms may contain students from multiple grade levels.

**Total School Enrollment**

2011-12	413
---------	-----

**Enrollment Trends by Program Participation**



**Current Year Enrollment by Program Participation**

2011-2012	Count of Students	% of Enrollment
Students with Disability	44	11%
Economically Disadvantaged Students	25	6.1%
Limited English Proficient Students	0	0.0%

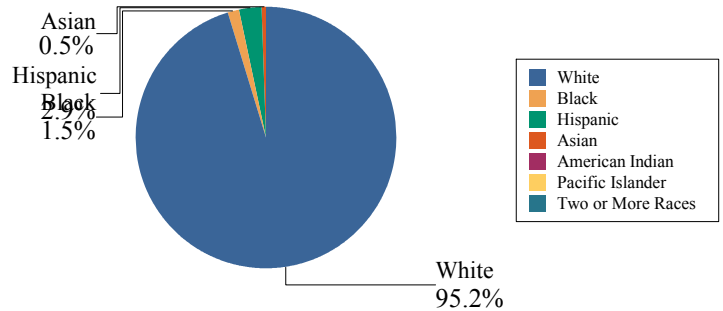
**Language Diversity**

This table presents the percentage of students who primarily speak each language in their home.

2011-12	Percent
English	100.0%

**Enrollment by Ethnic/Racial Subgroup**

This graph presents the percentages of enrollment for each subgroup defined by the No Child Left Behind Act of 2001



**Enrollment by Gender**

This graph presents the count of students by gender who were 'on roll' in October of each school year.



	Male	Female
2011-12	221	192



State of New Jersey

19-2450-050

KINGWOOD TWP

880 COUNTY ROAD 519

FRENCHTOWN, NJ 08825-9731

ACADEMIC ACHIEVEMENT

HUNTERDON

KINGWOOD TWP

GRADE SPAN PK-08

Academic Achievement measures the content knowledge students have in language arts literacy and math. In elementary and middle school, this includes the outcomes of the New Jersey Assessment of Skills and Knowledge (NJASK). The first column - Schoolwide Performance - in the table below includes measures of the total schoolwide proficiency rate in both language arts literacy and math across multiple administrations of the assessment. The second column - Peer School Percentile Rank - indicates where the school's proficiency rate compares to its group of peer schools. For example, a school that has a peer school percentile rank of 65 has a proficiency rate that is higher than 65% of its peer schools. The third column - Statewide Percentile Rank - indicates where the school's proficiency rate compares to schools across the state. For example, a school that has a statewide percentile rank of 30 has a proficiency rate that is higher than 30% of all schools with HSPA scores statewide. The last column - Percent of Targets Met - presents the percentage of progress targets met as defined by the NJDOE's NCLB waiver.

The Summary row presents the averages of the peer school percentile ranks, the average of statewide percentile ranks and the percentage of statewide targets met.

Academic Achievement Indicators	Schoolwide Performance	Peer Rank (Percentile)	State Rank (Percentile)	Percent of Targets Met
NJASK Language Arts Proficiency and above	75%	12	63	100%
NJASK Math Proficiency and above	82%	15	71	100%
<b>SUMMARY - Academic Achievement</b>		<b>14</b>	<b>67</b>	<b>100%</b>

NCLB Progress Targets - Language Arts Literacy

This table presents the Progress Targets as uniquely calculated for each subgroup in each school under NJDOE's NCLB waiver. The methodology - as defined by the United States Department of Education - is calculated so that each subgroup will halve the gap between their 2011 proficiency rate and 100% proficiency by 2017.

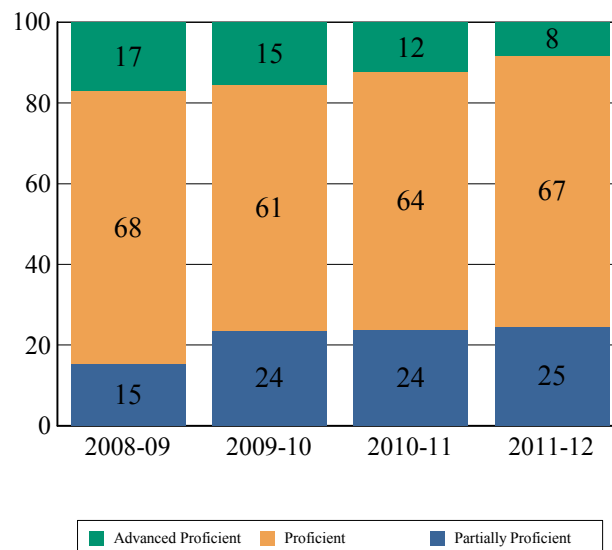
Subgroups	Total Valid Scores	Pass Rate	Target	Met Target?
Schoolwide	289	75.4	78.3	YES*
White	281	75.5	78.3	YES*
Black	-	-	-	--
Hispanic	-	-	-	--
American Indian	-	-	-	--
Asian	-	-	-	--
Two or More Races	-	-	-	--
Students with Disability	33	33.3	-	--
Limited English Proficient Students	-	-	-	--
Economically Disadvantaged Students	-	-	-	--

YES\* = Met Progress Target(Confidence Interval Applied)

Data is presented for subgroups when the count is high enough under NCLB suppression rules.

Proficiency Trends - Language Arts Literacy

This graph presents the percentage of students who scored in the Advanced Proficient, Proficient and Partially Proficient categories of the statewide Language Arts Literacy assessment over the prior four years.





**ACADEMIC ACHIEVEMENT**

**HUNTERDON  
KINGWOOD TWP**

**GRADE SPAN PK-08**

**19-2450-050  
KINGWOOD TWP  
880 COUNTY ROAD 519  
FRENCHTOWN, NJ 08825-9731**

**NCLB Progress Targets - Math**

This table presents the Progress Targets as uniquely calculated for each subgroup in each school under NJDOE's NCLB waiver. The methodology - as defined by the United States Department of Education - is calculated so that each subgroup will halve the gap between their 2011 proficiency rate and 100% proficiency by 2017.

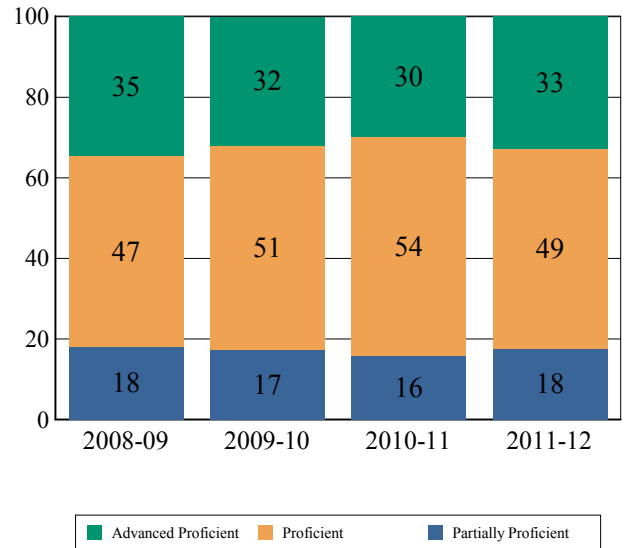
Subgroups	Total Valid Scores	Pass Rate	Target	Met Target?
Schoolwide	289	82.4	85.5	YES*
White	281	82.2	85.3	YES*
Black	-	-		--
Hispanic	-	-		--
American Indian	-	-		--
Asian	-	-		--
Two or More Races	-	-		--
Students with Disability	33	48.5	-	--
Limited English Proficient Students	-	-		--
Economically Disadvantaged Students	-	-		--

**YES\* = Met Progress Target(Confidence Interval Applied)**

Data is presented for subgroups when the count is high enough under NCLB suppression rules.

**Proficiency Trends - Math**

This graph presents the percentage of students who scored in the Advanced Proficient, Proficient and Partially Proficient categories of the statewide Math assessment over the prior four years.





**ACADEMIC ACHIEVEMENT**

**HUNTERDON  
KINGWOOD TWP**

**GRADE SPAN PK-08**

**19-2450-050  
KINGWOOD TWP  
880 COUNTY ROAD 519  
FRENCHTOWN, NJ 08825-9731**

**NJASK Results - Language Arts Literacy Grade Level - 03**

This table presents the grade level proficiency results, as measured by NJASK, in Advanced Proficient, Proficient, and Partially Proficient categories for all appropriate subgroups.

Subgroups	Advanced Proficient	Proficient	Partially Proficient
Schoolwide	0%	70%	30%
White	0%	71%	29%
Black	-	-	-
Hispanic	-	-	-
American Indian	N/A	N/A	N/A
Asian	N/A	N/A	N/A
Two or More Races	N/A	N/A	N/A
Students w/ Disability	-	-	-
Limited English Proficient Students	N/A	N/A	N/A
Economically Disadvantaged Students	-	-	-

Data is presented for subgroups when the count is high enough under NCLB suppression rules.

**NJASK Results - Language Arts Literacy Grade Level - 04**

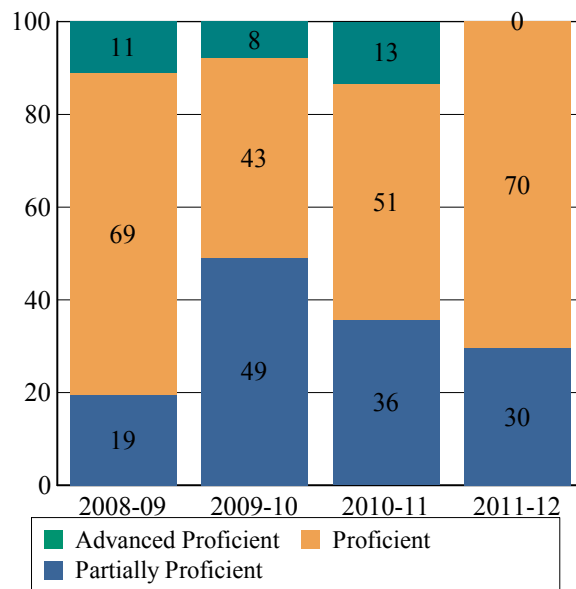
This table presents the grade level proficiency results, as measured by NJASK, in Advanced Proficient, Proficient, and Partially Proficient categories for all appropriate subgroups.

Subgroups	Advanced Proficient	Proficient	Partially Proficient
Schoolwide	2%	70%	28%
White	2%	71%	27%
Black	-	-	-
Hispanic	N/A	N/A	N/A
American Indian	N/A	N/A	N/A
Asian	N/A	N/A	N/A
Two or More Races	N/A	N/A	N/A
Students w/ Disability	-	-	-
Limited English Proficient Students	N/A	N/A	N/A
Economically Disadvantaged Students	-	-	-

Data is presented for subgroups when the count is high enough under NCLB suppression rules.

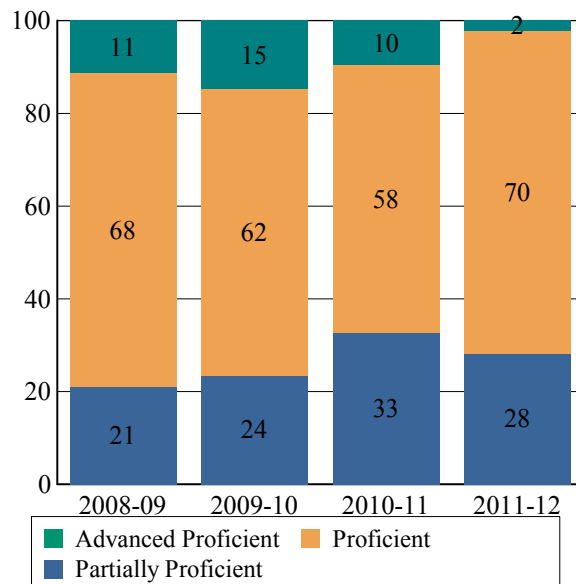
**NJASK Proficiency Trends - Language Arts Literacy - Grade Level - 03**

This graph presents the grade level outcomes in the categories of Advanced Proficient, Proficient, and Partially Proficient over the last four years.



**NJASK Proficiency Trends - Language Arts Literacy - Grade Level - 04**

This graph presents the grade level outcomes in the categories of Advanced Proficient, Proficient, and Partially Proficient over the last four years.





**ACADEMIC ACHIEVEMENT**

**HUNTERDON  
KINGWOOD TWP**

**GRADE SPAN PK-08**

**19-2450-050  
KINGWOOD TWP  
880 COUNTY ROAD 519  
FRENCHTOWN, NJ 08825-9731**

**NJASK Results - Language Arts Literacy Grade Level - 05**

This table presents the grade level proficiency results, as measured by NJASK, in Advanced Proficient, Proficient, and Partially Proficient categories for all appropriate subgroups.

Subgroups	Advanced Proficient	Proficient	Partially Proficient
Schoolwide	8%	51%	41%
White	8%	49%	43%
Black	-	-	-
Hispanic	-	-	-
American Indian	N/A	N/A	N/A
Asian	N/A	N/A	N/A
Two or More Races	N/A	N/A	N/A
Students w/ Disability	-	-	-
Limited English Proficient Students	N/A	N/A	N/A
Economically Disadvantaged Students	-	-	-

Data is presented for subgroups when the count is high enough under NCLB suppression rules.

**NJASK Results - Language Arts Literacy Grade Level - 06**

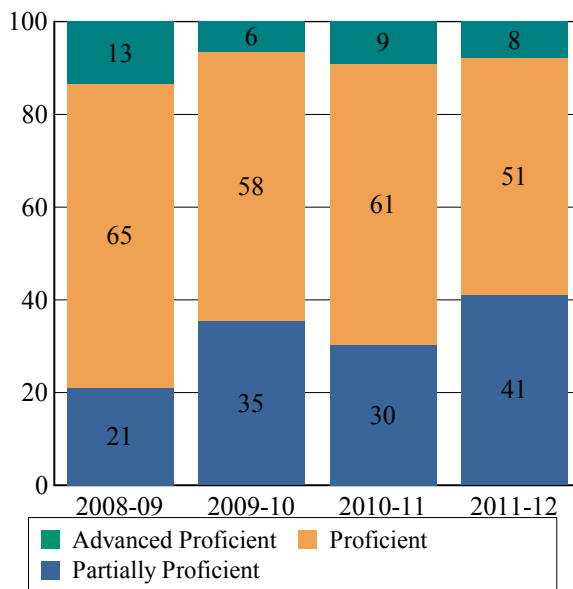
This table presents the grade level proficiency results, as measured by NJASK, in Advanced Proficient, Proficient, and Partially Proficient categories for all appropriate subgroups.

Subgroups	Advanced Proficient	Proficient	Partially Proficient
Schoolwide	9%	71%	21%
White	9%	70%	21%
Black	N/A	N/A	N/A
Hispanic	-	-	-
American Indian	N/A	N/A	N/A
Asian	N/A	N/A	N/A
Two or More Races	N/A	N/A	N/A
Students w/ Disability	-	-	-
Limited English Proficient Students	N/A	N/A	N/A
Economically Disadvantaged Students	-	-	-

Data is presented for subgroups when the count is high enough under NCLB suppression rules.

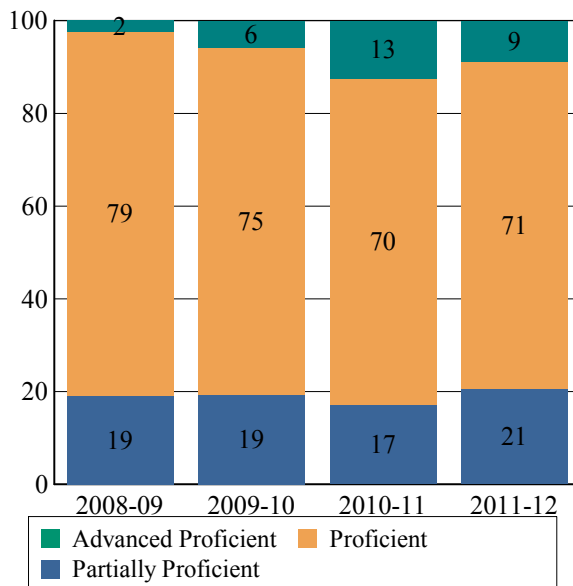
**NJASK Proficiency Trends - Language Arts Literacy - Grade Level - 05**

This graph presents the grade level outcomes in the categories of Advanced Proficient, Proficient, and Partially Proficient over the last four years.



**NJASK Proficiency Trends - Language Arts Literacy - Grade Level - 06**

This graph presents the grade level outcomes in the categories of Advanced Proficient, Proficient, and Partially Proficient over the last four years.





**ACADEMIC ACHIEVEMENT**

**HUNTERDON  
KINGWOOD TWP**

**GRADE SPAN PK-08**

**19-2450-050  
KINGWOOD TWP  
880 COUNTY ROAD 519  
FRENCHTOWN, NJ 08825-9731**

**NJASK Results - Language Arts Literacy Grade Level - 07**

This table presents the grade level proficiency results, as measured by NJASK, in Advanced Proficient, Proficient, and Partially Proficient categories for all appropriate subgroups.

Subgroups	Advanced Proficient	Proficient	Partially Proficient
Schoolwide	8%	66%	26%
White	8%	66%	26%
Black	N/A	N/A	N/A
Hispanic	N/A	N/A	N/A
American Indian	N/A	N/A	N/A
Asian	N/A	N/A	N/A
Two or More Races	N/A	N/A	N/A
Students w/ Disability	-	-	-
Limited English Proficient Students	N/A	N/A	N/A
Economically Disadvantaged Students	-	-	-

Data is presented for subgroups when the count is high enough under NCLB suppression rules.

**NJASK Results - Language Arts Literacy Grade Level - 08**

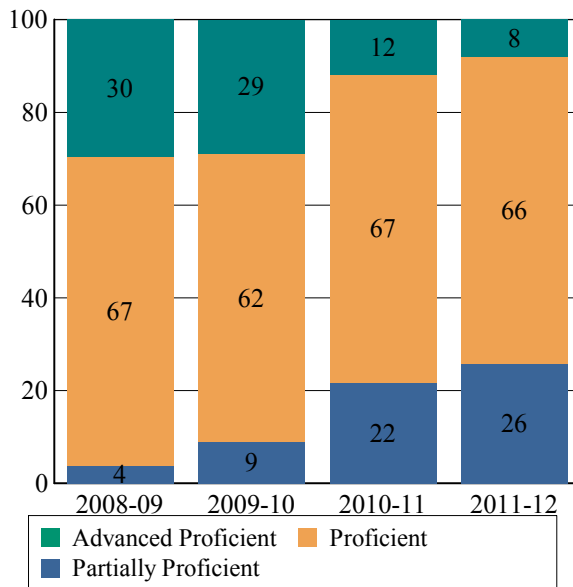
This table presents the grade level proficiency results, as measured by NJASK, in Advanced Proficient, Proficient, and Partially Proficient categories for all appropriate subgroups.

Subgroups	Advanced Proficient	Proficient	Partially Proficient
Schoolwide	21%	77%	2%
White	20%	78%	2%
Black	N/A	N/A	N/A
Hispanic	-	-	-
American Indian	N/A	N/A	N/A
Asian	N/A	N/A	N/A
Two or More Races	N/A	N/A	N/A
Students w/ Disability	-	-	-
Limited English Proficient Students	N/A	N/A	N/A
Economically Disadvantaged Students	-	-	-

Data is presented for subgroups when the count is high enough under NCLB suppression rules.

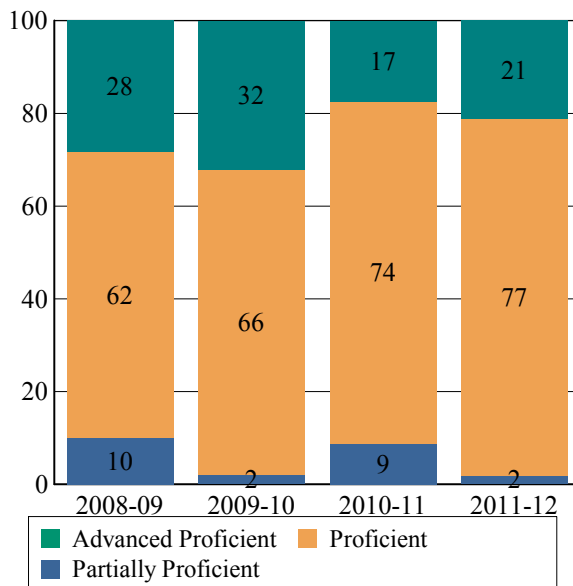
**NJASK Proficiency Trends - Language Arts Literacy - Grade Level - 07**

This graph presents the grade level outcomes in the categories of Advanced Proficient, Proficient, and Partially Proficient over the last four years.



**NJASK Proficiency Trends - Language Arts Literacy - Grade Level - 08**

This graph presents the grade level outcomes in the categories of Advanced Proficient, Proficient, and Partially Proficient over the last four years.





**ACADEMIC ACHIEVEMENT**

**HUNTERDON  
KINGWOOD TWP**

**GRADE SPAN PK-08**

**KINGWOOD TWP  
880 COUNTY ROAD 519  
FRENCHTOWN, NJ 08825-9731**

**2011 National Assessment Educational Progress (NAEP)**

The National Assessment of Educational Progress (NAEP) is the largest national assessment of what our nation's students know and can do. NAEP assesses fourth-, eighth-, and twelfth-grade students in subjects such as reading, mathematics, science, and writing. The reporting of NAEP scores on state report cards is a federal mandate. The results of NAEP are also published as the Nation's Report Card, and are available for the nation, states, and, in some cases, urban districts. The NAEP scores on the report card include grades four and eight 2011 reading and math scores for New Jersey which are the last scores published. For subgroup outcomes, visit :

<http://www.nj.gov/education/pr/2013/naep/naep4read.html>

For more information, visit <http://nces.ed.gov/nationsreportcard/>

**Proficiency Percentages**

Grade 4 Reading	State/Nation	Below Basic	Basic	Proficient	Advanced
All Students	State (NJ)	21.9	34.2	32.5	11.4
All Students	Nation	33.8	33.8	24.9	7.5

**2011 National Assessment Educational Progress (NAEP)**

The National Assessment of Educational Progress (NAEP) is the largest national assessment of what our nation's students know and can do. NAEP assesses fourth-, eighth-, and twelfth-grade students in subjects such as reading, mathematics, science, and writing. The reporting of NAEP scores on state report cards is a federal mandate. The results of NAEP are also published as the Nation's Report Card, and are available for the nation, states, and, in some cases, urban districts. The NAEP scores on the report card include grades four and eight 2011 reading and math scores for New Jersey which are the last scores published. For subgroup outcomes, visit :

<http://www.nj.gov/education/pr/2013/naep/naep8read.html>

For more information, visit <http://nces.ed.gov/nationsreportcard/>

**Proficiency Percentages**

Grade 8 Reading	State/Nation	Below Basic	Basic	Proficient	Advanced
All Students	State (NJ)	15.8	39.5	38.6	6.2
All Students	Nation	25.3	43.0	28.6	3.0





**ACADEMIC ACHIEVEMENT**

**HUNTERDON**

**KINGWOOD TWP**

**GRADE SPAN PK-08**

19-2450-050

**KINGWOOD TWP**

**880 COUNTY ROAD 519**

**FRENCHTOWN, NJ 08825-9731**

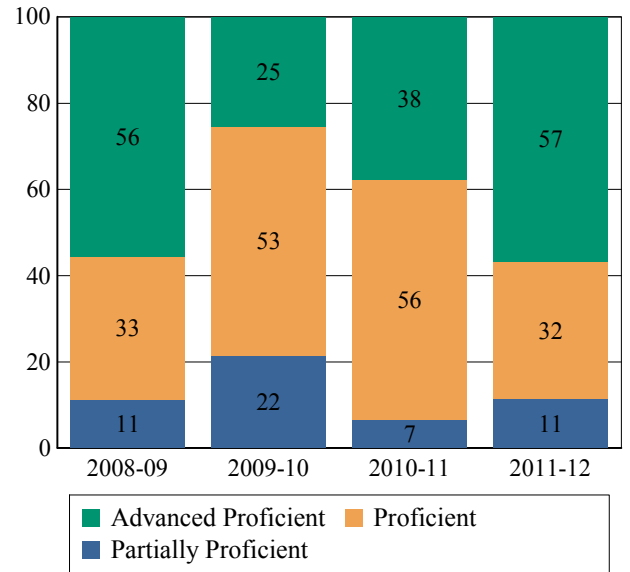
**NJASK Results - Math Grade Level - 03**

**NJASK Proficiency Trends - Math - Grade Level - 03**

This table presents the grade level proficiency results, as measured by NJASK, in Advanced Proficient, Proficient, and Partially Proficient categories for all appropriate subgroups.

This graph presents the grade level outcomes in the categories of Advanced Proficient, Proficient, and Partially Proficient over the last four years.

Subgroups	Advanced Proficient	Proficient	Partially Proficient
Schoolwide	57%	32%	11%
White	57%	33%	10%
Black	-	-	-
Hispanic	-	-	-
American Indian	N/A	N/A	N/A
Asian	N/A	N/A	N/A
Two or More Races	N/A	N/A	N/A
Students w/ Disability	-	-	-
Limited English Proficient Students	N/A	N/A	N/A
Economically Disadvantaged Students	-	-	-



Data is presented for subgroups when the count is high enough under NCLB suppression rules.

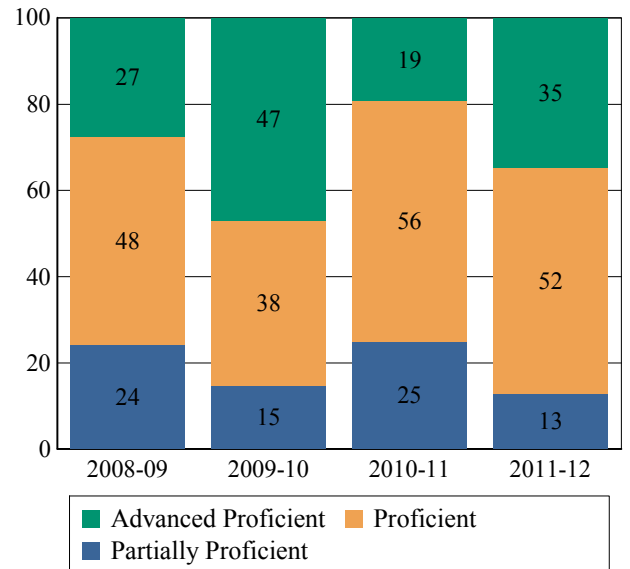
**NJASK Proficiency Trends - Math - Grade Level - 04**

**NJASK Results - Math Grade Level - 04**

This table presents the grade level proficiency results, as measured by NJASK, in Advanced Proficient, Proficient, and Partially Proficient categories for all appropriate subgroups.

This graph presents the grade level outcomes in the categories of Advanced Proficient, Proficient, and Partially Proficient over the last four years.

Subgroups	Advanced Proficient	Proficient	Partially Proficient
Schoolwide	35%	52%	13%
White	33%	53%	13%
Black	-	-	-
Hispanic	N/A	N/A	N/A
American Indian	N/A	N/A	N/A
Asian	N/A	N/A	N/A
Two or More Races	N/A	N/A	N/A
Students w/ Disability	-	-	-
Limited English Proficient Students	N/A	N/A	N/A
Economically Disadvantaged Students	-	-	-



Data is presented for subgroups when the count is high enough under NCLB suppression rules.



**ACADEMIC ACHIEVEMENT**

**HUNTERDON**

**KINGWOOD TWP**

**GRADE SPAN PK-08**

19-2450-050

**KINGWOOD TWP**

**880 COUNTY ROAD 519**

**FRENCHTOWN, NJ 08825-9731**

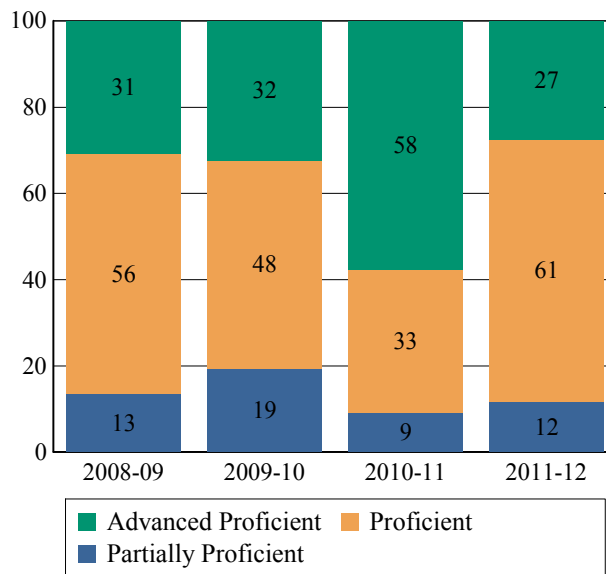
**NJASK Results - Math Grade Level - 05**

**NJASK Proficiency Trends - Math - Grade Level - 05**

This table presents the grade level proficiency results, as measured by NJASK, in Advanced Proficient, Proficient, and Partially Proficient categories for all appropriate subgroups.

This graph presents the grade level outcomes in the categories of Advanced Proficient, Proficient, and Partially Proficient over the last four years.

Subgroups	Advanced Proficient	Proficient	Partially Proficient
Schoolwide	27%	61%	12%
White	27%	61%	12%
Black	-	-	-
Hispanic	-	-	-
American Indian	N/A	N/A	N/A
Asian	N/A	N/A	N/A
Two or More Races	N/A	N/A	N/A
Students w/ Disability	-	-	-
Limited English Proficient Students	N/A	N/A	N/A
Economically Disadvantaged Students	-	-	-



Data is presented for subgroups when the count is high enough under NCLB suppression rules.

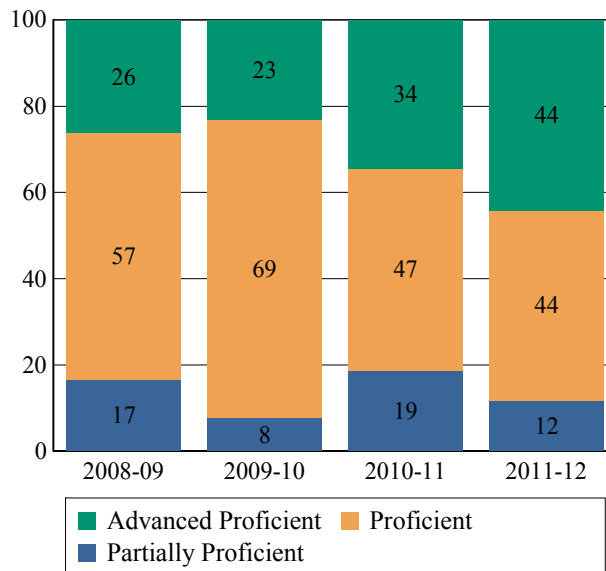
**NJASK Proficiency Trends - Math - Grade Level - 06**

**NJASK Results - Math Grade Level - 06**

This table presents the grade level proficiency results, as measured by NJASK, in Advanced Proficient, Proficient, and Partially Proficient categories for all appropriate subgroups.

This graph presents the grade level outcomes in the categories of Advanced Proficient, Proficient, and Partially Proficient over the last four years.

Subgroups	Advanced Proficient	Proficient	Partially Proficient
Schoolwide	44%	44%	12%
White	42%	45%	12%
Black	N/A	N/A	N/A
Hispanic	-	-	-
American Indian	N/A	N/A	N/A
Asian	N/A	N/A	N/A
Two or More Races	N/A	N/A	N/A
Students w/ Disability	-	-	-
Limited English Proficient Students	N/A	N/A	N/A
Economically Disadvantaged Students	-	-	-



Data is presented for subgroups when the count is high enough under NCLB suppression rules.



**ACADEMIC ACHIEVEMENT**

**HUNTERDON**

**KINGWOOD TWP**

**GRADE SPAN PK-08**

19-2450-050

**KINGWOOD TWP**

**880 COUNTY ROAD 519**

**FRENCHTOWN, NJ 08825-9731**

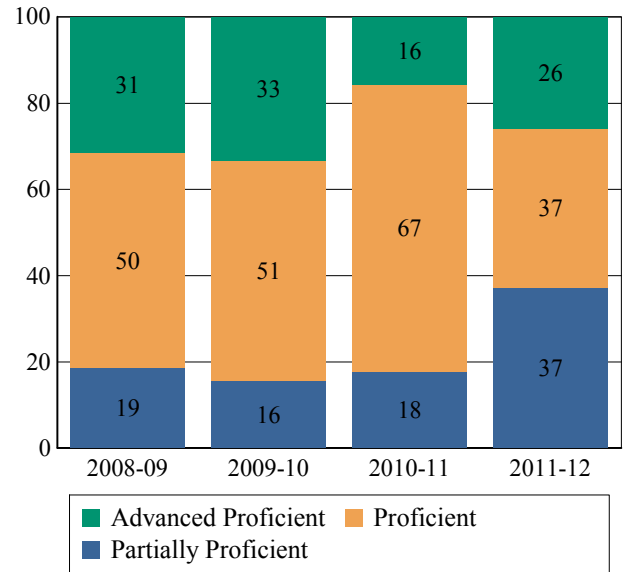
**NJASK Results - Math Grade Level - 07**

**NJASK Proficiency Trends - Math - Grade Level - 07**

This table presents the grade level proficiency results, as measured by NJASK, in Advanced Proficient, Proficient, and Partially Proficient categories for all appropriate subgroups.

This graph presents the grade level outcomes in the categories of Advanced Proficient, Proficient, and Partially Proficient over the last four years.

Subgroups	Advanced Proficient	Proficient	Partially Proficient
Schoolwide	26%	37%	37%
White	26%	37%	37%
Black	N/A	N/A	N/A
Hispanic	N/A	N/A	N/A
American Indian	N/A	N/A	N/A
Asian	N/A	N/A	N/A
Two or More Races	N/A	N/A	N/A
Students w/ Disability	-	-	-
Limited English Proficient Students	N/A	N/A	N/A
Economically Disadvantaged Students	-	-	-



Data is presented for subgroups when the count is high enough under NCLB suppression rules.

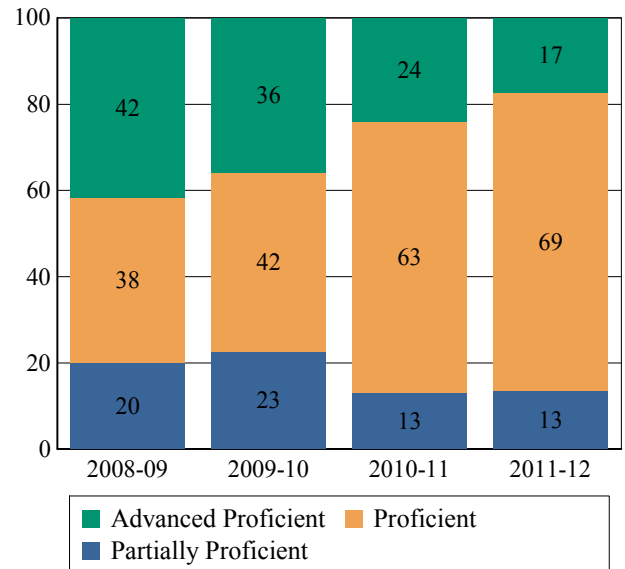
**NJASK Proficiency Trends - Math - Grade Level - 08**

**NJASK Results - Math Grade Level - 08**

This table presents the grade level proficiency results, as measured by NJASK, in Advanced Proficient, Proficient, and Partially Proficient categories for all appropriate subgroups.

This graph presents the grade level outcomes in the categories of Advanced Proficient, Proficient, and Partially Proficient over the last four years.

Subgroups	Advanced Proficient	Proficient	Partially Proficient
Schoolwide	17%	69%	13%
White	16%	70%	14%
Black	N/A	N/A	N/A
Hispanic	-	-	-
American Indian	N/A	N/A	N/A
Asian	N/A	N/A	N/A
Two or More Races	N/A	N/A	N/A
Students w/ Disability	-	-	-
Limited English Proficient Students	N/A	N/A	N/A
Economically Disadvantaged Students	-	-	-



Data is presented for subgroups when the count is high enough under NCLB suppression rules.



**ACADEMIC ACHIEVEMENT**

HUNTERDON

KINGWOOD TWP

GRADE SPAN PK-08

**2011 National Assessment Educational Progress (NAEP)**

The National Assessment of Educational Progress (NAEP) is the largest national assessment of what our nation's students know and can do. NAEP assesses fourth-, eighth-, and twelfth-grade students in subjects such as reading, mathematics, science, and writing. The reporting of NAEP scores on state report cards is a federal mandate. The results of NAEP are also published as the Nation's Report Card, and are available for the nation, states, and, in some cases, urban districts. The NAEP scores on the report card include grades four and eight 2011 reading and math scores for New Jersey which are the last scores published. For subgroup outcomes, visit :

<http://www.nj.gov/education/pr/2013/naep/naep4math.html>

For more information, visit <http://nces.ed.gov/nationsreportcard/>

**Proficiency Percentages**

Grade 4 Math	State/Nation	Below Basic	Basic	Proficient	Advanced
All Students	State (NJ)	11.0	38.3	40.9	9.8
All Students	Nation	18.1	42.3	33.2	6.5

**2011 National Assessment Educational Progress (NAEP)**

The National Assessment of Educational Progress (NAEP) is the largest national assessment of what our nation's students know and can do. NAEP assesses fourth-, eighth-, and twelfth-grade students in subjects such as reading, mathematics, science, and writing. The reporting of NAEP scores on state report cards is a federal mandate. The results of NAEP are also published as the Nation's Report Card, and are available for the nation, states, and, in some cases, urban districts. The NAEP scores on the report card include grades four and eight 2011 reading and math scores for New Jersey which are the last scores published. For subgroup outcomes, visit :

<http://www.nj.gov/education/pr/2013/naep/naep8math.html>

For more information, visit <http://nces.ed.gov/nationsreportcard/>

**Proficiency Percentages**

Grade 8 Math	State/Nation	Below Basic	Basic	Proficient	Advanced
All Students	State (NJ)	17.8	35.3	33.2	13.6
All Students	Nation	27.7	38.8	25.7	7.8



# State of New Jersey

19-2450-050

KINGWOOD TWP

880 COUNTY ROAD 519

FRENCHTOWN, NJ 08825-9731

## ACADEMIC ACHIEVEMENT

HUNTERDON

KINGWOOD TWP

GRADE SPAN PK-08

### NJASK Results - Science Grade Level - 04

This table presents the grade level proficiency results, as measured by NJASK, in Advanced Proficient, Proficient, and Partially Proficient categories for all appropriate subgroups.

Subgroups	Advanced Proficient	Proficient	Partially Proficient
Schoolwide	80%	20%	0%
White	80%	20%	0%
Black	-	-	-
Hispanic	N/A	N/A	N/A
American Indian	N/A	N/A	N/A
Asian	N/A	N/A	N/A
Two or More Races	N/A	N/A	N/A
Students w/ Disability	-	-	-
Limited English Proficient Students	N/A	N/A	N/A
Economically Disadvantaged Students	-	-	-

Data is presented for subgroups when the count is high enough under NCLB suppression rules.

### NJASK Results - Science Grade Level - 08

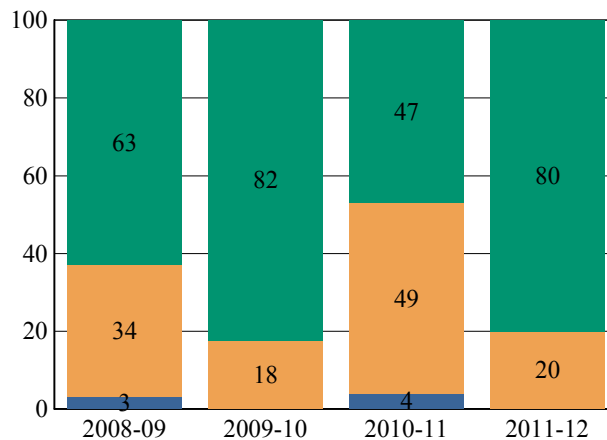
This table presents the grade level proficiency results, as measured by NJASK, in Advanced Proficient, Proficient, and Partially Proficient categories for all appropriate subgroups.

Subgroups	Advanced Proficient	Proficient	Partially Proficient
Schoolwide	48%	50%	2%
White	46%	52%	2%
Black	N/A	N/A	N/A
Hispanic	-	-	-
American Indian	N/A	N/A	N/A
Asian	N/A	N/A	N/A
Two or More Races	N/A	N/A	N/A
Students w/ Disability	-	-	-
Limited English Proficient Students	N/A	N/A	N/A
Economically Disadvantaged Students	-	-	-

Data is presented for subgroups when the count is high enough under NCLB suppression rules.

### NJASK Proficiency Trends - Science - Grade Level - 04

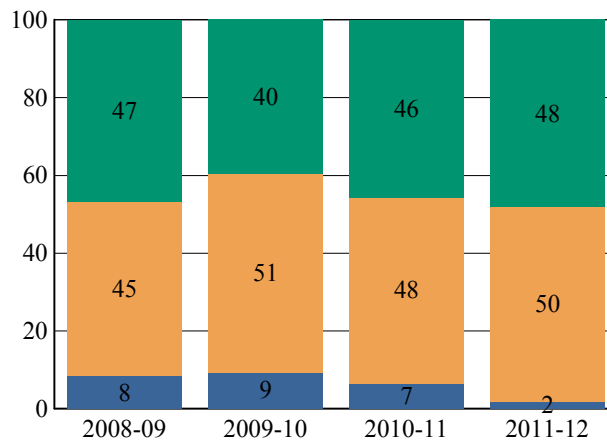
This graph presents the grade level outcomes in the categories of Advanced Proficient, Proficient, and Partially Proficient over the last four years.



■ Advanced Proficient 
 ■ Proficient 
 ■ Partially Proficient

### NJASK Proficiency Trends - Science - Grade Level - 08

This graph presents the grade level outcomes in the categories of Advanced Proficient, Proficient, and Partially Proficient over the last four years.



■ Advanced Proficient 
 ■ Proficient 
 ■ Partially Proficient



State of New Jersey

COLLEGE AND CAREER READINESS

HUNTERDON  
KINGWOOD TWP

GRADE SPAN PK-08

19-2450-050  
KINGWOOD TWP  
880 COUNTY ROAD 519  
FRENCHTOWN, NJ 08825-9731

Students in both elementary and middle schools begin to demonstrate college readiness behaviors long before they even enter high school. Among the behaviors that research has shown to be indicative of success and college and career readiness are regularly attending school and challenging themselves with rigorous course work. First, the table presents the percentage of students, as measured against the school's enrollment in seventh and eighth grade, who were reported via NJSMART as being enrolled in Algebra I. The table also presents the percentage of students who were chronically absent during the prior school year. A chronically absent student is a student who was not present for any reason for more than 10% of the total days possible for that individual student.

The first column - Schoolwide Performance - represents the outcomes for these particular indicators in this school. The second column - Peer School Percentile Rank - indicates how the school's performance compares to its group of peer schools. For example, a school whose peer school rank is 65 in Algebra I Enrollment has a higher Algebra I Enrollment than 65% of its peer group. The third column - Statewide Percentile Rank - indicates how the school's performance compares to schools across the state. The fourth column - Statewide Target - provides the statewide targets for each of these indicators. The last column - Met Target? - indicates whether the School Performance met or exceeded the statewide target.

The Summary row presents the averages of the peer school percentile ranks, the average of statewide percentile ranks and the percentage of statewide targets met.

College and Career Readiness Indicators	School Performance	Peer Rank (Percentile)	Statewide Rank (Percentile)	Statewide Target	Met Target?
Students taking Algebra (%)	21%	56	58	20%	YES
Chronic Absenteeism (%)	4%	65	80	6%	YES
Summary		61	69		100%

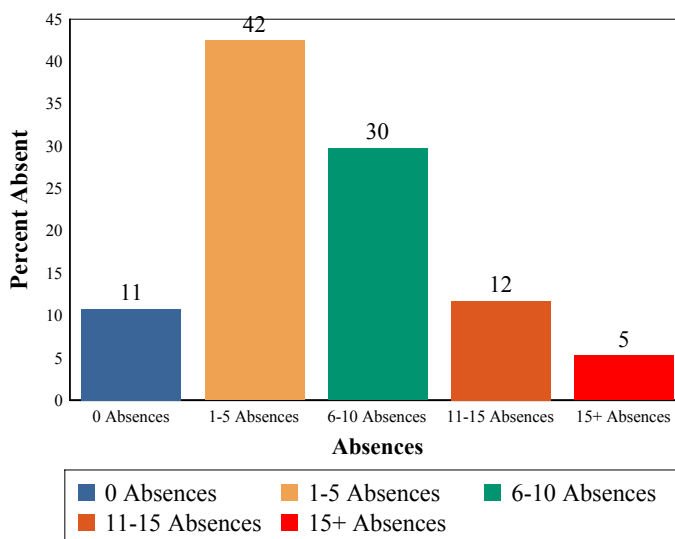
Algebra I

This table presents the percentage of seventh and eighth graders who were reported in the Algebra I course code in NJSMART and the percentage of those students who earned a C or higher in the course.

2011-12	School
Students taking Algebra I	21%
Algebra grade (C or better)	100%

Absenteeism

The chart below presents the percentage of students who were absent in each category of absence: 0 absences, 1- 5 absences, 6- 10 absences, 11 - 15 absences, and more than 15 absences. An absence is defined as being 'not present' and includes the days missed regardless of whether they were determined to be excused or unexcused by the school.





State of New Jersey

19-2450-050

KINGWOOD TWP

880 COUNTY ROAD 519

FRENCHTOWN, NJ 08825-9731

**STUDENT GROWTH**

HUNTERDON

KINGWOOD TWP

GRADE SPAN PK-08

This section of the performance report presents data about student growth, utilizing the Student Growth Percentile Methodology (SGP). SGP creates a measure of how students progressed in grades 4 through 8 in NJ ASK Language Arts Literacy and Math when compared to other students with a similar NJ ASK test score history. A short video explaining the methodology can be found here: <http://www.state.nj.us/education/njsmart/performance/>

The first column - Schoolwide Performance - presents the schoolwide median growth score in either Language Arts Literacy or Math for all students in the school. The second column - Peer Rank - indicates how the school's growth performance compares to its group of peer schools. The third column - Statewide Rank - indicates how a school compares to schools across the state. The last column - Met Target? - indicates whether the school's performance met or exceeded the target.

The summary row presents the averages of the peer school percentile ranks, the averages of statewide percentile ranks, the percentage of statewide targets met.

Student Growth Indicators	Schoolwide Performance	Peer Rank (Percentile)	Statewide Rank (Percentile)	Statewide Target	Met Target?
Student Growth on Language Arts	52	28	62	35	YES
Student Growth on Math	48	20	43	35	YES
		24	53		100%

**Student Growth**

This table presents for all students with growth scores the interaction between their proficiency level on NJASK and their growth scores. For example, in the top left cell the percentage of students who are both partially proficient AND also demonstrating low growth is displayed.

**Language Arts**

**Math**

	GROWTH		
	Low	Typical	High
Partially Proficient	13%	6%	5%
Proficient	16%	28%	23%
Advanced Proficient	0%	2%	7%

	GROWTH		
	Low	Typical	High
Partially Proficient	11%	6%	1%
Proficient	17%	22%	14%
Advanced Proficient	6%	10%	12%

**Low Growth** is defined as an **Student Growth Percentile** score less than 35.

**Typical Growth** is defined as an **Student Growth Percentile** score between 35 and 65.

**High Growth** is defined as a **Student Growth Percentile** score higher than 65.



# State of New Jersey

19-2450-050

KINGWOOD TWP

880 COUNTY ROAD 519

FRENCHTOWN, NJ 08825-9731

## WITHIN SCHOOL ACHIEVEMENT GAP

HUNTERDON

KINGWOOD TWP

GRADE SPAN PK-08

This section of the performance report presents data about the achievement gap that exists within a school - as measured by the difference between the students' scale scores at the 25th and 75th percentile in the school, the so-called Interquartile Range (IQR). Taken together with an understanding of the overall and average achievement levels in the school, the IQR furthers an understanding of the range of student outcomes that exist in a school. A school gap smaller than the state gap indicates that the school's range of student outcomes is narrower than the state's while a school gap larger than the state gap indicates that the school's range of student outcomes is larger than the state's.

### Grade Level - 03

#### NJ ASK Language Arts 25th %ile vs 75th%ile

This table presents the scale scores associated with students at the bottom (0th percentile), the 25th percentile, the 50th percentile, the 75th percentile and the top (99th percentile) of school's distribution

Percentile	Scale Score
99th	244
75th	219
50th	213
25th	194
0th	161

	Scale Score Gap - School	Scale Score Gap - State
25th vs 75th Gap	25	28

### Grade Level - 03

#### NJ ASK Math 25th %ile vs 75th%ile

This table presents the scale scores associated with students at the bottom (0th percentile), the 25th percentile, the 50th percentile, the 75th percentile and the top (99th percentile) of school's distribution

Percentile	Scale Score
99th	300
75th	272
50th	252
25th	228
0th	180

	Scale Score Gap - School	Scale Score Gap - State
25th vs 75th Gap	44	61

### Grade Level - 04

#### NJ ASK Language Arts 25th %ile vs 75th%ile

This table presents the scale scores associated with students at the bottom (0th percentile), the 25th percentile, the 50th percentile, the 75th percentile and the top (99th percentile) of school's distribution

Percentile	Scale Score
99th	250
75th	219
50th	206
25th	193
0th	157

	Scale Score Gap - School	Scale Score Gap - State
25th vs 75th Gap	26	31

### Grade Level - 04

#### NJ ASK Math 25th %ile vs 75th%ile

This table presents the scale scores associated with students at the bottom (0th percentile), the 25th percentile, the 50th percentile, the 75th percentile and the top (99th percentile) of school's distribution

Percentile	Scale Score
99th	289
75th	250
50th	224
25th	212
0th	171

	Scale Score Gap - School	Scale Score Gap - State
25th vs 75th Gap	38	56





**WITHIN SCHOOL ACHIEVEMENT GAP**

HUNTERDON

KINGWOOD TWP

GRADE SPAN PK-08

**Grade Level - 05**

**NJ ASK Language Arts 25th %ile vs 75th%ile**

This table presents the scale scores associated with students at the bottom (0th percentile), the 25th percentile, the 50th percentile, the 75th percentile and the top (99th percentile) of school's distribution

Percentile	Scale Score
99th	254
75th	225
50th	203
25th	186
0th	155

	Scale Score Gap - School	Scale Score Gap - State
--	-----------------------------	----------------------------

25th vs 75th Gap	39	38
------------------	----	----

**Grade Level - 06**

**NJ ASK Language Arts 25th %ile vs 75th%ile**

This table presents the scale scores associated with students at the bottom (0th percentile), the 25th percentile, the 50th percentile, the 75th percentile and the top (99th percentile) of school's distribution

Percentile	Scale Score
99th	254
75th	235
50th	223
25th	206
0th	180

	Scale Score Gap - School	Scale Score Gap - State
--	-----------------------------	----------------------------

25th vs 75th Gap	29	34
------------------	----	----

**Grade Level - 05**

**NJ ASK Math 25th %ile vs 75th%ile**

This table presents the scale scores associated with students at the bottom (0th percentile), the 25th percentile, the 50th percentile, the 75th percentile and the top (99th percentile) of school's distribution

Percentile	Scale Score
99th	300
75th	251
50th	224
25th	215
0th	164

	Scale Score Gap - School	Scale Score Gap - State
--	-----------------------------	----------------------------

25th vs 75th Gap	36	56
------------------	----	----

**Grade Level - 06**

**NJ ASK Math 25th %ile vs 75th%ile**

This table presents the scale scores associated with students at the bottom (0th percentile), the 25th percentile, the 50th percentile, the 75th percentile and the top (99th percentile) of school's distribution

Percentile	Scale Score
99th	293
75th	263
50th	243
25th	229
0th	158

	Scale Score Gap - School	Scale Score Gap - State
--	-----------------------------	----------------------------

25th vs 75th Gap	34	57
------------------	----	----



**WITHIN SCHOOL ACHIEVEMENT GAP**

HUNTERDON  
KINGWOOD TWP

GRADE SPAN PK-08

**Grade Level - 07**

**NJ ASK Language Arts 25th %ile vs 75th%ile**

This table presents the scale scores associated with students at the bottom (0th percentile), the 25th percentile, the 50th percentile, the 75th percentile and the top (99th percentile) of school's distribution

Percentile	Scale Score
99th	268
75th	228
50th	211
25th	200
0th	151

	Scale Score Gap - School	Scale Score Gap - State
25th vs 75th Gap	29	44

**Grade Level - 08**

**NJ ASK Language Arts 25th %ile vs 75th%ile**

This table presents the scale scores associated with students at the bottom (0th percentile), the 25th percentile, the 50th percentile, the 75th percentile and the top (99th percentile) of school's distribution

Percentile	Scale Score
99th	268
75th	244
50th	230
25th	221
0th	203

	Scale Score Gap - School	Scale Score Gap - State
25th vs 75th Gap	23	33

**Grade Level - 07**

**NJ ASK Math 25th %ile vs 75th%ile**

This table presents the scale scores associated with students at the bottom (0th percentile), the 25th percentile, the 50th percentile, the 75th percentile and the top (99th percentile) of school's distribution

Percentile	Scale Score
99th	299
75th	241
50th	209
25th	191
0th	142

	Scale Score Gap - School	Scale Score Gap - State
25th vs 75th Gap	50	61

**Grade Level - 08**

**NJ ASK Math 25th %ile vs 75th%ile**

This table presents the scale scores associated with students at the bottom (0th percentile), the 25th percentile, the 50th percentile, the 75th percentile and the top (99th percentile) of school's distribution

Percentile	Scale Score
99th	300
75th	237
50th	223
25th	201
0th	156

	Scale Score Gap - School	Scale Score Gap - State
25th vs 75th Gap	36	64



**SCHOOL CLIMATE**

HUNTERDON

KINGWOOD TWP

GRADE SPAN PK-08

**Length of School Day**

This table presents the amount of time a school is in session for a typical student on a normal school day.

	School
2011-12	6 Hrs 30 Mins

**Student Suspension Rate**

This table presents the percentage of students who were suspended one or more times during the school year.

	School
2011-12	2.7%

**Instructional Time**

This table presents the amount of time that a typical student is engaged in instructional activities under the supervision of a certified teacher.

2011-12	School
Full Time	5 Hrs 30 Mins.
Shared Time	0 Hrs. 0 Mins.

**Student Expulsions**

This table presents the number of students who were expelled from the school and district during the school year.

	School
2011-12	0

**Student to Staff Ratio**

This table presents the count of students per faculty member or administrator in the school. All staff are counted in full-time equivalents.

2011-12	School
Faculty	8.9
Administrators	344.2

**SCHOOL PEER GROUP****KINGWOOD TWP****19-2450-050**

This table presents the list of peer schools in alphabetical order by county name that was created specifically for this school (highlighted in yellow). Peer schools are drawn from across the state and represent schools that have similar grade configurations and that are educating students of similar demographic characteristics, as measured by enrollment in Free/Reduced Lunch Programs, Limited English Proficiency or Special Education Programs.

<u>COUNTY NAME</u>	<u>DISTRICT NAME</u>	<u>SCHOOL NAME</u>	<u>CDS CODE</u>	<u>GRADE SPAN</u>	<u>FRPL</u>	<u>LEP</u>	<u>SpED</u>
ATLANTIC	LINWOOD CITY	BELHAVEN MIDDLE SCH	01-2680-020	05-08	5.8%	0.2%	13.6%
BERGEN	CLOSTER BORO	TENAKILL M S	03-0930-060	05-08	0.0%	4.7%	14.0%
BERGEN	ENGLEWOOD CLIFFS BORO	ENGLEWOOD CLIFFS UPPER SCH	03-1380-060	03-08	1.0%	2.1%	2.1%
BERGEN	HAWORTH BORO	HAWORTH	03-2090-050	KG-08	0.0%	5.3%	10.8%
BERGEN	OAKLAND BORO	VALLEY MIDDLE	03-3760-080	06-08	7.2%	0.3%	15.8%
BURLINGTON	EVESHAM TWP	FRANCES DEMASI MIDDLE SCH	05-1420-040	06-08	8.8%	0.0%	18.3%
BURLINGTON	SHAMONG TWP	INDIAN MILLS MEMORIAL SCH	05-4740-055	05-08	7.6%	0.0%	13.1%
HUNTERDON	ALEXANDRIA TWP	ALEXANDRIA SCHOOL	19-0020-005	04-08	7.3%	0.0%	13.3%
HUNTERDON	FRANKLIN TWP	FRANKLIN TWP	19-1600-050	PK-08	5.7%	0.0%	12.1%
HUNTERDON	HOLLAND TWP	HOLLAND TWP ELEM SCH	19-2220-060	PK-08	9.1%	0.2%	19.8%
<b>HUNTERDON</b>	<b>KINGWOOD TWP</b>	<b>KINGWOOD TWP</b>	<b>19-2450-050</b>	<b>PK-08</b>	<b>6.1%</b>	<b>0.0%</b>	<b>8.2%</b>
HUNTERDON	READINGTON TWP	READINGTON	19-4350-050	06-08	5.1%	1.1%	16.4%
MONMOUTH	MANALAPAN-ENGLISHTOWN REG	MANALAPAN ENGLISHTOWN MID	25-2920-060	07-08	7.7%	0.2%	12.6%
MONMOUTH	OCEANPORT BORO	MAPLE PLACE	25-3830-030	05-08	6.7%	0.0%	16.8%
MORRIS	CHESTER TWP	BLACK RIVER MIDDLE	27-0820-020	06-08	4.9%	0.8%	13.8%
MORRIS	MADISON BORO	MADISON JR	27-2870-100	06-08	5.5%	1.5%	14.3%
MORRIS	RANDOLPH TWP	RANDOLPH MIDDLE	27-4330-075	06-08	6.8%	1.4%	17.0%
PASSAIC	RINGWOOD BORO	MARTIN J RYERSON	31-4400-053	06-08	5.8%	0.0%	12.9%
SOMERSET	BRANCHBURG TWP	CENTRAL	35-0510-020	06-08	5.7%	0.7%	15.4%
SOMERSET	BRIDGEWATER-RARITAN REG	BRDGWTR RARITN MIDDLE SCH	35-0555-010	07-08	7.9%	0.6%	17.6%
SOMERSET	SOMERSET HILLS REGIONAL	BERNARDSVILLE MIDDLE SCH	35-4815-040	05-08	7.2%	0.7%	13.9%
SUSSEX	BYRAM TWP	BYRAM TWP INTERMEDIATE	37-0640-030	05-08	8.4%	0.2%	16.1%
SUSSEX	FRANKFORD TWP	FRANKFORD TWP	37-1560-050	PK-08	7.3%	0.0%	16.5%
SUSSEX	GREEN TWP	GREEN HILLS SCHOOL	37-1800-060	KG-08	6.1%	0.0%	11.2%
SUSSEX	LAFAYETTE TWP	LAFAYETTE TWP	37-2490-050	KG-08	8.0%	0.0%	18.3%
UNION	SCOTCH PLAINS-FANWOOD REG	PARK MIDDLE	39-4670-060	05-08	6.4%	0.3%	13.7%