

May 2022 Traffic Report

AVIATION DEPARTMENT (Data As Of 9/1/2022 3:45:37 PM)

REGION



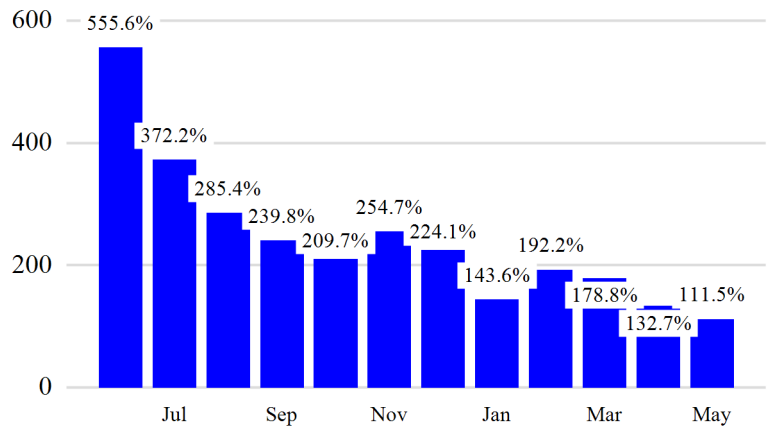
Revenue Passengers

	Curr Month	% Change
	11,587,197	111.5% ▲
Domestic	8,197,257	93.3%
International	3,389,940	173.9%
Non-Revenue	329,819	93.4%

Load Factors	Curr Month
Domestic	80.9%
International	75.2%

79.1% Avg Load Factor

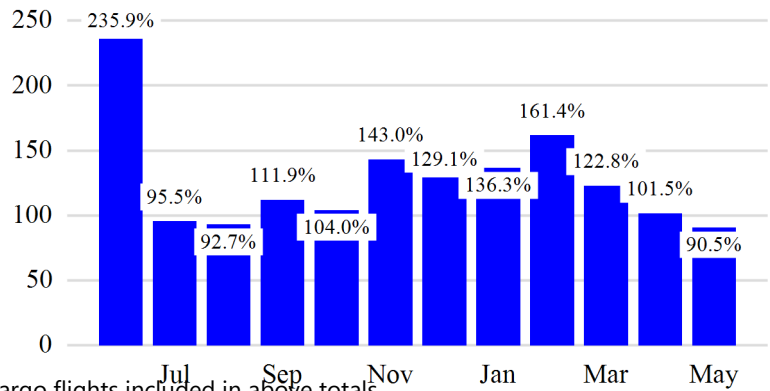
Year over Year % Change in Revenue Passengers - 12 Months



Total Flights

	Curr Month	% Change
	105,202	86.0% ▲
Excl GA	102,036	90.5% ▲
Domestic	80,087	96.0%
International	21,949	72.8%
Gen Aviation	3,166	5.6%
Cargo Flights*	3,416	-7.4%

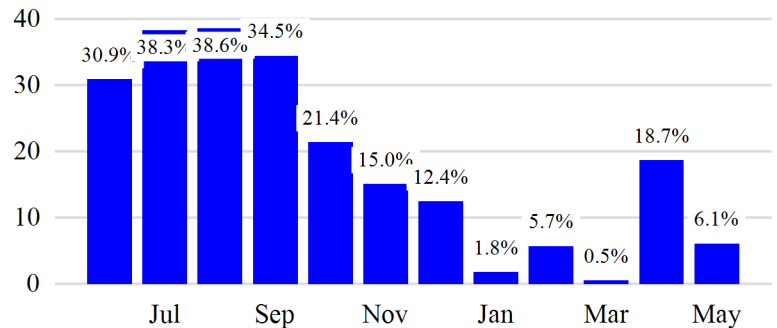
Year over Year % Change in Total Flights (Excl GA) - 12 Months



Cargo (Short Tons)

	Curr Month	% Change
	212,904	6.1% ▲
Domestic	106,257	21.2%
International	106,647	-5.6%
Mail	11,901	-1.6%

Year over Year % Change in Cargo - 12 Months



Top 5 Declines in Revenue Passengers by Airline

Airline	Pax Decline	% Decline
FRONTIER AIRLINES	(43,433)	-51.0%
EASTERN	(4,538)	-98.0%
HAWAIIAN AIRLINES	(2,881)	-26.0%
ETHIOPIAN AIRLINES	(719)	-10.0%
VOLARIS AIR	(576)	-15.0%

Top 5 Increases in Revenue Passengers by Airline

Airline	Pax Increase	% Increase
UNITED	1,722,186	135.0%
DELTA	1,288,465	100.0%
AMERICAN	926,858	128.0%
JETBLUE AIRWAYS	595,455	48.0%
ALASKA AIRLINES	158,682	237.0%

Airport Summary Statistics

JFK Summary

	Current Month	YoY %
Total Revenue Pax	4,816,950	117.0
Total Flights Including GA	36,878	58.0
Total Cargo (Short Tons)	148,374	7.8

EWR Summary

	Current Month	YoY %
Total Revenue Pax	4,056,877	87.0
Total Flights Including GA	36,359	78.0
Total Cargo (Short Tons)	62,175	3.7

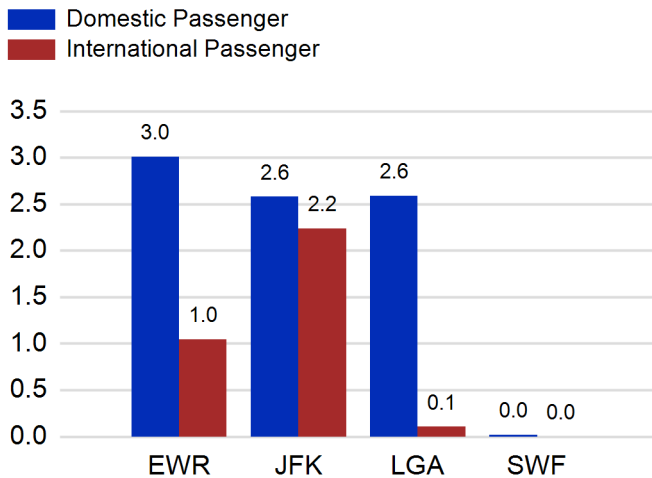
LGA Summary

	Current Month	YoY %
Total Revenue Pax	2,692,843	146.0
Total Flights Including GA	29,792	192.0
Total Cargo (Short Tons)	599	7.6

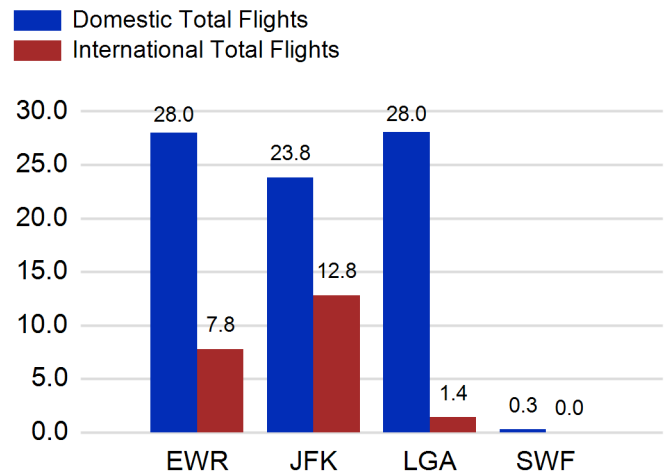
SWF Summary

	Current Month	YoY %
Total Revenue Pax	20,527	121.0
Total Flights Including GA	2,173	-17.0
Total Cargo (Short Tons)	1,756	-29.1

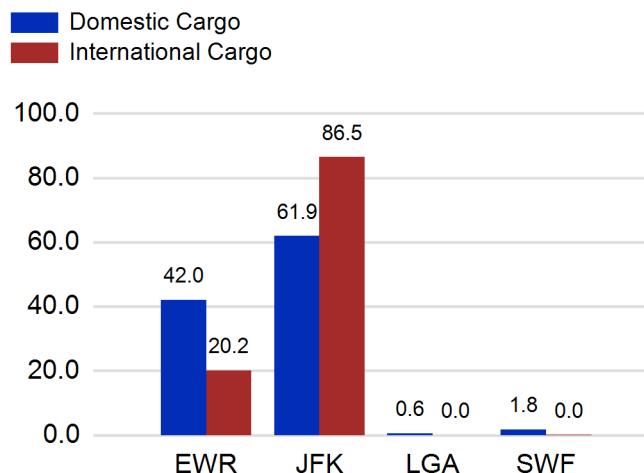
Total Passengers by Airport (Millions)



Total Flights by Airport (Thousands)



Total Cargo by Airport (Thousands of Short Tons)



12 Months Ending Passenger & Freight Statistics

Top 20 Airlines Ranking by Passengers & Freight: 12 Months Ending May 2022

Airline Name	Domestic	International	Total Pax	% of Tot	Airline Name	Short Tons	% of Tot
United	20,352,779	5,743,821	26,096,600	25.31%	FEDERAL EXPRESS	436,390	17.77%
DELTA	20,697,360	3,404,079	24,101,439	23.38%	United	218,015	8.88%
JETBLUE AIRWAYS	13,362,310	5,108,136	18,470,446	17.91%	UNITED PARCEL	212,702	8.66%
AMERICAN	12,098,795	2,016,929	14,115,724	13.69%	DELTA	99,441	4.05%
SPIRIT AIRLINES	3,320,051	0	3,320,051	3.22%	AMERICAN	88,551	3.61%
SOUTHWEST AIRLINES	2,178,176	0	2,178,176	2.11%	KALITTA AIR LLC	86,544	3.52%
ALASKA AIRLINES	1,627,948	0	1,627,948	1.58%	ABX AIR INC	78,376	3.19%
FRONTIER AIRLINES	880,221	53,917	934,138	0.91%	ATLAS AIR	73,910	3.01%
AIR CANADA	0	728,354	728,354	0.71%	AIR TRANSPORT INT'L.(BAX Inc.)	68,060	2.77%
EMIRATES AIRLINES	0	714,592	714,592	0.69%	CARGOLUX AIRLINES	65,882	2.68%
TURKISH AIR	0	616,034	616,034	0.60%	KOREAN	61,801	2.52%
BRITISH AIRWAYS	0	596,237	596,237	0.58%	ITA (formerly ALITALIA)	59,364	2.42%
AIR FRANCE	0	572,041	572,041	0.55%	CHINA AIRLINES (CAL)	55,186	2.25%
Avianca Costa Rica	0	564,705	564,705	0.55%	CATHAY PACIFIC	39,673	1.62%
LUFTHANSA CARGO	0	501,002	501,002	0.49%	LUFTHANSA CARGO	35,681	1.45%
VIRGIN ATLANTIC	0	434,341	434,341	0.42%	TURKISH AIR	30,950	1.26%
QATAR AIRWAYS	0	418,449	418,449	0.41%	SAUDI ARABIAN AIRLINES	30,939	1.26%
EL AL	0	357,671	357,671	0.35%	VIRGIN ATLANTIC	30,749	1.25%
COPA AIRLINES	0	353,665	353,665	0.34%	EVA	28,947	1.18%
TAM BRAZILIAN AIRLINES	0	335,047	335,047	0.32%	AIR FRANCE	26,510	1.08%

Passengers & Freight by Market - 12 Months Ending

Market	Passengers	Freight (Short Tons)
TRANSATLANTIC	13,734,544	943,716
CANADA	1,148,067	4,629
CARIBBEAN + BERMUDA	7,100,426	14,575
CENTRAL AND SOUTH AMERICA	3,497,385	50,621
DOMESTIC	72,562,642	1,059,140
MEXICO	2,093,943	10,093
TRANSPACIFIC	509,156	363,151
PUERTO RICO	2,457,251	9,586

Additional Data

Airline Schedules (ADI): Non-Stop Destinations

	Region	Flights (Daily)	Cities
Domestic	Domestic	2574.8	107
	Puerto Rico	38.5	3
	Total	2,613.3	110.00
International	Canada	133.0	7
	Caribbean & Bermuda	141.9	23
	Central & South America	72.7	17
	Mexico	38.5	5
	Trans-Atlantic	316.0	57
	Trans-Pacific	16.8	8
	Total	718.9	117.00
Total	3,332.2	227.00	

Airline Schedules (ADI): Carriers & Aircraft Type

	Aircraft Type	Flights (Daily)	Carriers
Domestic	Commuter	1047.4	4
	General Aviation	4.0	1
	Narrow Body	1500.4	10
	Wide Body	61.5	4
Total	Total	2,613.3	19.00
International	Commuter	106.2	5
	Narrow Body	296.1	21
	Wide Body	316.6	51
	Total	Total	718.9
Total	Total	3,332.2	96.00

Passenger Demographics (ACI ASQ Surveys - 2021)

Connect		Trip Type		Gender	
Local Origin/Destination	78.6%	Business	14.0%	M	49.6%
Connecting	21.4%	Leisure	86.0%	F	50.4%
Transport Mode		Annual Flights		Residency	
Bus/Shuttle	4.7%	1-2	61.5%	United States	81.0%
Other	18.7%	3-5	24.9%	Other	19.0%
Private/Company Car	37.5%	6-10	9.0%		
Rail/Subway	7.3%	11-20	2.8%		
Rental Car	4.6%	21+	1.8%		
Taxi/Limo	27.2%				

Ground Transportation

	Curr Month	% Change		Curr Month	% Change
<i>Paid Parked Cars</i>	426,463	63.8	<i>Total Air Train Passengers</i>	2,432,792	77.8
<i>GTC Bookings</i>	0		<i>Paid Howard Beach Passengers</i>	156,739	190.2
<i>Airport Coach Passengers</i>	30,279	205.8	<i>Paid Jamaica Passengers</i>	637,665	219.1
<i>Taxis Dispatched</i>	386,518	128.6	<i>Paid EWR Passengers</i>	204,593	125.6
			<i>On-Airport (Unpaid) Passengers</i>	1,433,795	40.1

Airlines for American Carriers (USA)

	Curr Month	% Change
<i>Freight:revenue ton miles (000)</i>	0	

Regional Airports: Other

	Curr Month	% Change
<i>TEB flight movements</i>	14,142	21.2
<i>ISP Total passengers</i>	118,255	17.7
<i>HPN Total passengers</i>	144,032	57.8