



State of New Jersey

33-1350-050

ELSINBORO TWP

631 SALEM FORT ELFSBORG ROAD

SALEM, NJ 08079

OVERVIEW

SALEM

ELSINBORO TWP

GRADE SPAN KG-08

This school's academic performance is **high when compared** to schools across the state. Additionally, its academic performance is **very high when compared** to its peers. This school's college and career readiness **significantly lags in comparison** to schools across the state. Additionally, its college and career readiness **significantly lags in comparison** to its peers. This school's student growth performance is **high when compared** to schools across the state. Additionally, its student growth performance is **very high when compared** to its peers.

Performance Areas	Peer Rank (Percentile)	Statewide Rank (Percentile)	Percent of Targets Met
Academic Achievement	83	62	100%
College and Career Readiness	10	15	0%
Student Growth	90	78	100%

Improvement Status

N/A

Rationale

N/A

**Very High Performance** is defined as being equal to or above the 80.0th percentile.

**High Performance** is defined as being between the 60.0th and 79.9th percentiles.

**Average Performance** is defined as being between the 40.0th and 59.9th percentiles.

**Lagging Performance** is defined as being between the 20.0th and 39.9th percentiles.

**Significantly Lagging Performance** is defined as being equal to or below the 19.9th percentile.

**Peer Schools** are schools that have similar grade levels and students with similar demographic characteristics, such as the percentage of students qualifying for Free/Reduced Lunch, Limited English Proficiency programs or Special Education programs.

Academic Achievement

This school outperforms **62%** of schools statewide as noted by its statewide percentile ranking and **83%** of schools educating students with similar demographic characteristics as noted in its peer school percentile ranking in the performance area of Academic Achievement. Additionally, this school is meeting **100%** of its performance targets in the area of Academic Achievement.



Academic Achievement measures the content knowledge students have in language arts literacy and math. For elementary and middle schools, this includes measures of the school's proficiency rate on both the Language Arts Literacy and Math sections of the New Jersey Assessment of Skills and Knowledge (NJ ASK). A proficiency rate is calculated by summing the count of students who scored either proficient or advanced proficient on the assessment and dividing by the count of valid test scores.

College and Career Readiness

This school outperforms **15%** of schools statewide as noted by its statewide percentile ranking and **10%** of schools educating students with similar demographic characteristics as noted in its peer school percentile ranking in the performance area of College and Career Readiness. Additionally, this school is meeting **0%** of its performance targets in the area of College and Career Readiness.



College and Career readiness measures the degree to which students are demonstrating behaviors that are indicative of future attendance and/or success in college and careers. For all elementary and middle schools, this includes a measurement of how many students are chronically absent. For schools with middle school grades, it also includes a measurement of how many students take Algebra I in either seventh or eighth grade.

Student Growth

This school outperforms **78%** of schools statewide as noted by its statewide percentile ranking and **90%** of schools educating students with similar demographic characteristics as noted in its peer school percentile ranking in the performance area of Student Growth. Additionally, this school is meeting **100%** percentage of its performance targets in the area of Student Growth.



Student Growth measures the performance of students from one year to the next on the New Jersey Assessment of Skills and Knowledge (NJ ASK) in Language Arts Literacy and Math when compared to students with a similar history of performance on NJ-ASK.



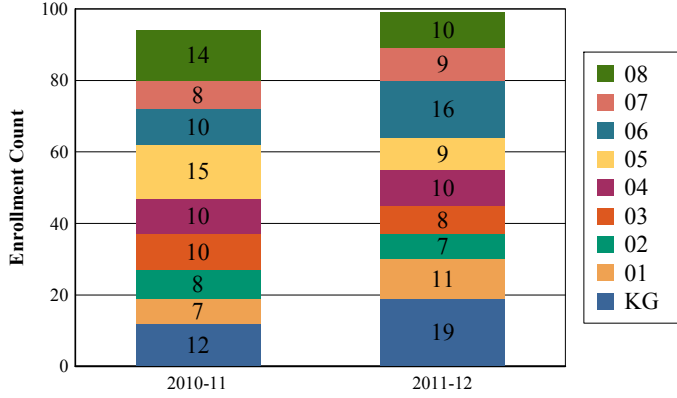
**DEMOGRAPHIC INFORMATION**

SALEM  
ELSINBORO TWP

GRADE SPAN KG-08

**Enrollment by Grade**

This graph presents the count of students who were 'on roll' by grade in October of each school year.

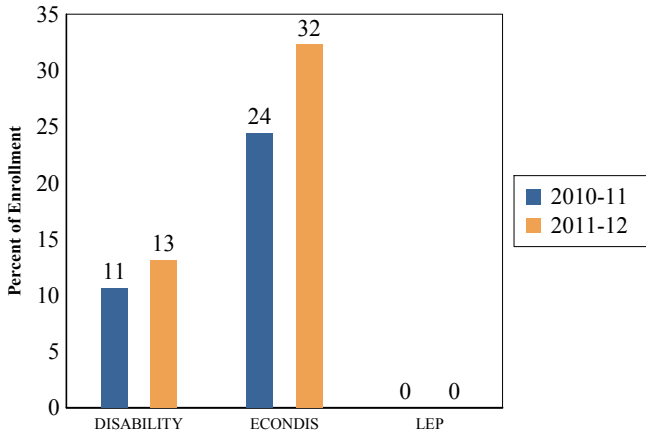


Total School Enrollment Trends

Note: "UG" represents the count of students who are 'on roll' in this school but who are educated in ungraded classrooms, meaning that the classrooms may contain students from multiple grade levels.

Total School Enrollment	
2010-11	94
2011-12	99

**Enrollment Trends by Program Participation**



**Current Year Enrollment by Program Participation**

2011-2012	Count of Students	% of Enrollment
Students with Disability	13	13%
Economically Disadvantaged Students	32	32.3%
Limited English Proficient Students	0	0.0%

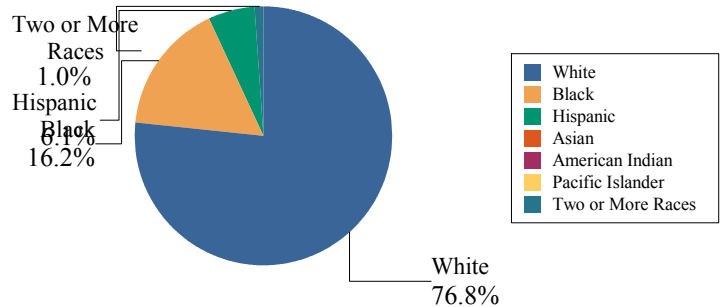
**Language Diversity**

This table presents the percentage of students who primarily speak each language in their home.

2011-12	Percent
English	100.0%

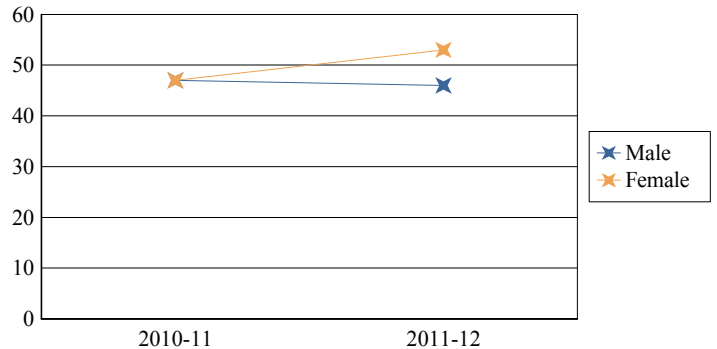
**Enrollment by Ethnic/Racial Subgroup**

This graph presents the percentages of enrollment for each subgroup defined by the No Child Left Behind Act of 2001



**Enrollment by Gender**

This graph presents the count of students by gender who were 'on roll' in October of each school year.



	Male	Female
2010-11	47	47
2011-12	46	53



# State of New Jersey

33-1350-050

ELSINBORO TWP

631 SALEM FORT ELFSBORG ROAD

SALEM, NJ 08079

## ACADEMIC ACHIEVEMENT

SALEM

ELSINBORO TWP

GRADE SPAN KG-08

Academic Achievement measures the content knowledge students have in language arts literacy and math. In elementary and middle school, this includes the outcomes of the New Jersey Assessment of Skills and Knowledge (NJASK). The first column - Schoolwide Performance - in the table below includes measures of the total schoolwide proficiency rate in both language arts literacy and math across multiple administrations of the assessment. The second column - Peer School Percentile Rank - indicates where the school's proficiency rate compares to its group of peer schools. For example, a school that has a peer school percentile rank of 65 has a proficiency rate that is higher than 65% of its peer schools. The third column - Statewide Percentile Rank - indicates where the school's proficiency rate compares to schools across the state. For example, a school that has a statewide percentile rank of 30 has a proficiency rate that is higher than 30% of all schools with HSPA scores statewide. The last column - Percent of Targets Met - presents the percentage of progress targets met as defined by the NJDOE's NCLB waiver.

The Summary row presents the averages of the peer school percentile ranks, the average of statewide percentile ranks and the percentage of statewide targets met.

Academic Achievement Indicators	Schoolwide Performance	Peer Rank (Percentile)	State Rank (Percentile)	Percent of Targets Met
NJASK Language Arts Proficiency and above	67%	65	45	100%
NJASK Math Proficiency and above	85%	100	79	100%
<b>SUMMARY - Academic Achievement</b>		<b>83</b>	<b>62</b>	<b>100%</b>

### NCLB Progress Targets - Language Arts Literacy

This table presents the Progress Targets as uniquely calculated for each subgroup in each school under NJDOE's NCLB waiver. The methodology - as defined by the United States Department of Education - is calculated so that each subgroup will halve the gap between their 2011 proficiency rate and 100% proficiency by 2017.

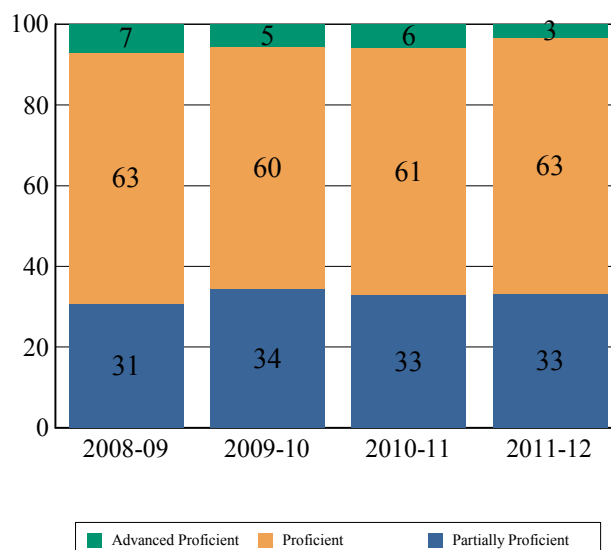
Subgroups	Total Valid Scores	Pass Rate	Target	Met Target?
Schoolwide	60	66.6	69.9	YES*
White	48	66.7	72.9	YES*
Black	-	-		--
Hispanic	-	-		--
American Indian	-	-		--
Asian	-	-		--
Two or More Races	-	-		--
Students with Disability	-	-		--
Limited English Proficient Students	-	-		--
Economically Disadvantaged Students	-	-		--

YES\* = Met Progress Target(Confidence Interval Applied)

Data is presented for subgroups when the count is high enough under NCLB suppression rules.

### Proficiency Trends - Language Arts Literacy

This graph presents the percentage of students who scored in the Advanced Proficient, Proficient and Partially Proficient categories of the statewide Language Arts Literacy assessment over the prior four years.





State of New Jersey

33-1350-050

ELSINBORO TWP

631 SALEM FORT ELFSBORG ROAD

SALEM, NJ 08079

ACADEMIC ACHIEVEMENT

SALEM

ELSINBORO TWP

GRADE SPAN KG-08

NCLB Progress Targets - Math

This table presents the Progress Targets as uniquely calculated for each subgroup in each school under NJDOE's NCLB waiver. The methodology - as defined by the United States Department of Education - is calculated so that each subgroup will halve the gap between their 2011 proficiency rate and 100% proficiency by 2017.

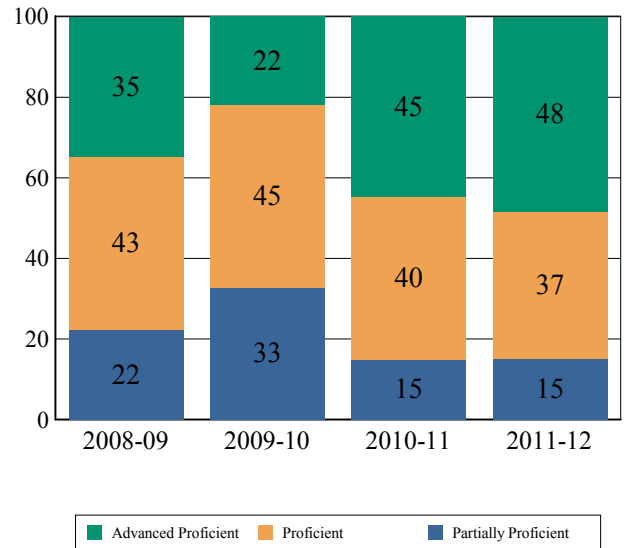
Subgroups	Total Valid Scores	Pass Rate	Target	Met Target?
Schoolwide	60	85	86.4	YES*
White	48	87.5	83	YES
Black	-	-		--
Hispanic	-	-		--
American Indian	-	-		--
Asian	-	-		--
Two or More Races	-	-		--
Students with Disability	-	-		--
Limited English Proficient Students	-	-		--
Economically Disadvantaged Students	-	-		--

YES\* = Met Progress Target(Confidence Interval Applied)

Data is presented for subgroups when the count is high enough under NCLB suppression rules.

Proficiency Trends - Math

This graph presents the percentage of students who scored in the Advanced Proficient, Proficient and Partially Proficient categories of the statewide Math assessment over the prior four years.





**ACADEMIC ACHIEVEMENT**

SALEM  
ELSINBORO TWP

GRADE SPAN KG-08

33-1350-050  
ELSINBORO TWP  
631 SALEM FORT ELFSBORG ROAD  
SALEM, NJ 08079

**NJASK Results - Language Arts Literacy Grade Level - 03**

This table presents the grade level proficiency results, as measured by NJASK, in Advanced Proficient, Proficient, and Partially Proficient categories for all appropriate subgroups.

Subgroups	Advanced Proficient	Proficient	Partially Proficient
Schoolwide	-	-	-
White	-	-	-
Black	N/A	N/A	N/A
Hispanic	N/A	N/A	N/A
American Indian	N/A	N/A	N/A
Asian	N/A	N/A	N/A
Two or More Races	N/A	N/A	N/A
Students w/ Disability	-	-	-
Limited English Proficient Students	N/A	N/A	N/A
Economically Disadvantaged Students	N/A	N/A	N/A

Data is presented for subgroups when the count is high enough under NCLB suppression rules.

**NJASK Results - Language Arts Literacy Grade Level - 04**

This table presents the grade level proficiency results, as measured by NJASK, in Advanced Proficient, Proficient, and Partially Proficient categories for all appropriate subgroups.

Subgroups	Advanced Proficient	Proficient	Partially Proficient
Schoolwide	-	-	-
White	-	-	-
Black	-	-	-
Hispanic	N/A	N/A	N/A
American Indian	N/A	N/A	N/A
Asian	N/A	N/A	N/A
Two or More Races	N/A	N/A	N/A
Students w/ Disability	-	-	-
Limited English Proficient Students	N/A	N/A	N/A
Economically Disadvantaged Students	-	-	-

Data is presented for subgroups when the count is high enough under NCLB suppression rules.

**NJASK Proficiency Trends - Language Arts Literacy - Grade Level - 03**

This graph presents the grade level outcomes in the categories of Advanced Proficient, Proficient, and Partially Proficient over the last four years.

**Data is suppressed to protect the confidentiality of the students.**

**NJASK Proficiency Trends - Language Arts Literacy - Grade Level - 04**

This graph presents the grade level outcomes in the categories of Advanced Proficient, Proficient, and Partially Proficient over the last four years.

**Data is suppressed to protect the confidentiality of the students.**



**ACADEMIC ACHIEVEMENT**

SALEM  
ELSINBORO TWP

GRADE SPAN KG-08

33-1350-050  
ELSINBORO TWP  
631 SALEM FORT ELFSBORG ROAD  
SALEM, NJ 08079

**NJASK Results - Language Arts Literacy Grade Level - 05**

This table presents the grade level proficiency results, as measured by NJASK, in Advanced Proficient, Proficient, and Partially Proficient categories for all appropriate subgroups.

Subgroups	Advanced Proficient	Proficient	Partially Proficient
Schoolwide	-	-	-
White	-	-	-
Black	-	-	-
Hispanic	-	-	-
American Indian	N/A	N/A	N/A
Asian	N/A	N/A	N/A
Two or More Races	-	-	-
Students w/ Disability	-	-	-
Limited English Proficient Students	N/A	N/A	N/A
Economically Disadvantaged Students	-	-	-

Data is presented for subgroups when the count is high enough under NCLB suppression rules.

**NJASK Results - Language Arts Literacy Grade Level - 06**

This table presents the grade level proficiency results, as measured by NJASK, in Advanced Proficient, Proficient, and Partially Proficient categories for all appropriate subgroups.

Subgroups	Advanced Proficient	Proficient	Partially Proficient
Schoolwide	0%	60%	40%
White	0%	62%	38%
Black	-	-	-
Hispanic	N/A	N/A	N/A
American Indian	N/A	N/A	N/A
Asian	N/A	N/A	N/A
Two or More Races	N/A	N/A	N/A
Students w/ Disability	-	-	-
Limited English Proficient Students	N/A	N/A	N/A
Economically Disadvantaged Students	-	-	-

Data is presented for subgroups when the count is high enough under NCLB suppression rules.

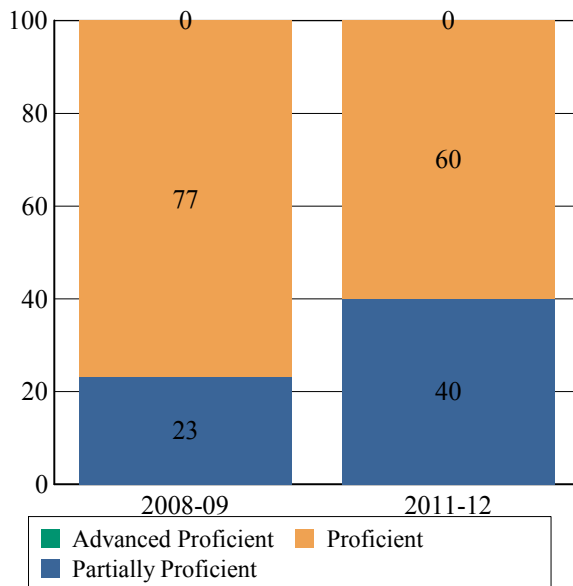
**NJASK Proficiency Trends - Language Arts Literacy - Grade Level - 05**

This graph presents the grade level outcomes in the categories of Advanced Proficient, Proficient, and Partially Proficient over the last four years.

**Data is suppressed to protect the confidentiality of the students.**

**NJASK Proficiency Trends - Language Arts Literacy - Grade Level - 06**

This graph presents the grade level outcomes in the categories of Advanced Proficient, Proficient, and Partially Proficient over the last four years.





State of New Jersey

33-1350-050

ELSINBORO TWP

631 SALEM FORT ELFSBORG ROAD

SALEM, NJ 08079

ACADEMIC ACHIEVEMENT

SALEM

ELSINBORO TWP

GRADE SPAN KG-08

NJASK Results - Language Arts Literacy Grade Level - 07

This table presents the grade level proficiency results, as measured by NJASK, in Advanced Proficient, Proficient, and Partially Proficient categories for all appropriate subgroups.

Subgroups	Advanced Proficient	Proficient	Partially Proficient
Schoolwide	-	-	-
White	-	-	-
Black	-	-	-
Hispanic	N/A	N/A	N/A
American Indian	N/A	N/A	N/A
Asian	N/A	N/A	N/A
Two or More Races	N/A	N/A	N/A
Students w/ Disability	-	-	-
Limited English Proficient Students	N/A	N/A	N/A
Economically Disadvantaged Students	-	-	-

Data is presented for subgroups when the count is high enough under NCLB suppression rules.

NJASK Results - Language Arts Literacy Grade Level - 08

This table presents the grade level proficiency results, as measured by NJASK, in Advanced Proficient, Proficient, and Partially Proficient categories for all appropriate subgroups.

Subgroups	Advanced Proficient	Proficient	Partially Proficient
Schoolwide	9%	64%	27%
White	-	-	-
Black	-	-	-
Hispanic	N/A	N/A	N/A
American Indian	N/A	N/A	N/A
Asian	N/A	N/A	N/A
Two or More Races	-	-	-
Students w/ Disability	-	-	-
Limited English Proficient Students	N/A	N/A	N/A
Economically Disadvantaged Students	-	-	-

Data is presented for subgroups when the count is high enough under NCLB suppression rules.

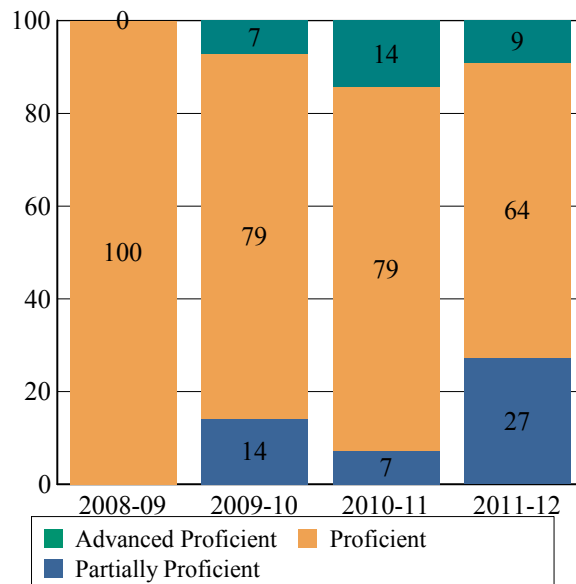
NJASK Proficiency Trends - Language Arts Literacy - Grade Level - 07

This graph presents the grade level outcomes in the categories of Advanced Proficient, Proficient, and Partially Proficient over the last four years.

Data is suppressed to protect the confidentiality of the students.

NJASK Proficiency Trends - Language Arts Literacy - Grade Level - 08

This graph presents the grade level outcomes in the categories of Advanced Proficient, Proficient, and Partially Proficient over the last four years.





State of New Jersey

33-1350-050

**ACADEMIC ACHIEVEMENT**

ELSINBORO TWP

SALEM

631 SALEM FORT ELFSBORG ROAD

ELSINBORO TWP

GRADE SPAN KG-08

SALEM, NJ 08079

**2011 National Assessment Educational Progress (NAEP)**

The National Assessment of Educational Progress (NAEP) is the largest national assessment of what our nation's students know and can do. NAEP assesses fourth-, eighth-, and twelfth-grade students in subjects such as reading, mathematics, science, and writing. The reporting of NAEP scores on state report cards is a federal mandate. The results of NAEP are also published as the Nation's Report Card, and are available for the nation, states, and, in some cases, urban districts. The NAEP scores on the report card include grades four and eight 2011 reading and math scores for New Jersey which are the last scores published. For subgroup outcomes, visit :

<http://www.nj.gov/education/pr/2013/naep/naep4read.html>

For more information, visit <http://nces.ed.gov/nationsreportcard/>

**Proficiency Percentages**

Grade 4 Reading	State/Nation	Below Basic	Basic	Proficient	Advanced
All Students	State (NJ)	21.9	34.2	32.5	11.4
All Students	Nation	33.8	33.8	24.9	7.5

**2011 National Assessment Educational Progress (NAEP)**

The National Assessment of Educational Progress (NAEP) is the largest national assessment of what our nation's students know and can do. NAEP assesses fourth-, eighth-, and twelfth-grade students in subjects such as reading, mathematics, science, and writing. The reporting of NAEP scores on state report cards is a federal mandate. The results of NAEP are also published as the Nation's Report Card, and are available for the nation, states, and, in some cases, urban districts. The NAEP scores on the report card include grades four and eight 2011 reading and math scores for New Jersey which are the last scores published. For subgroup outcomes, visit :

<http://www.nj.gov/education/pr/2013/naep/naep8read.html>

For more information, visit <http://nces.ed.gov/nationsreportcard/>

**Proficiency Percentages**

Grade 8 Reading	State/Nation	Below Basic	Basic	Proficient	Advanced
All Students	State (NJ)	15.8	39.5	38.6	6.2
All Students	Nation	25.3	43.0	28.6	3.0





State of New Jersey

33-1350-050

ELSINBORO TWP

631 SALEM FORT ELFSBORG ROAD

SALEM, NJ 08079

**ACADEMIC ACHIEVEMENT**

SALEM  
ELSINBORO TWP

GRADE SPAN KG-08

**NJASK Results - Math Grade Level - 03**

**NJASK Proficiency Trends - Math - Grade Level - 03**

This table presents the grade level proficiency results, as measured by NJASK, in Advanced Proficient, Proficient, and Partially Proficient categories for all appropriate subgroups.

This graph presents the grade level outcomes in the categories of Advanced Proficient, Proficient, and Partially Proficient over the last four years.

Subgroups	Advanced Proficient	Proficient	Partially Proficient
Schoolwide	-	-	-
White	-	-	-
Black	N/A	N/A	N/A
Hispanic	N/A	N/A	N/A
American Indian	N/A	N/A	N/A
Asian	N/A	N/A	N/A
Two or More Races	N/A	N/A	N/A
Students w/ Disability	-	-	-
Limited English Proficient Students	N/A	N/A	N/A
Economically Disadvantaged Students	N/A	N/A	N/A

**Data is suppressed to protect the confidentiality of the students.**

Data is presented for subgroups when the count is high enough under NCLB suppression rules.

**NJASK Results - Math Grade Level - 04**

**NJASK Proficiency Trends - Math - Grade Level - 04**

This table presents the grade level proficiency results, as measured by NJASK, in Advanced Proficient, Proficient, and Partially Proficient categories for all appropriate subgroups.

This graph presents the grade level outcomes in the categories of Advanced Proficient, Proficient, and Partially Proficient over the last four years.

Subgroups	Advanced Proficient	Proficient	Partially Proficient
Schoolwide	-	-	-
White	-	-	-
Black	-	-	-
Hispanic	N/A	N/A	N/A
American Indian	N/A	N/A	N/A
Asian	N/A	N/A	N/A
Two or More Races	N/A	N/A	N/A
Students w/ Disability	-	-	-
Limited English Proficient Students	N/A	N/A	N/A
Economically Disadvantaged Students	-	-	-

**Data is suppressed to protect the confidentiality of the students.**

Data is presented for subgroups when the count is high enough under NCLB suppression rules.



State of New Jersey

33-1350-050

ELSINBORO TWP

631 SALEM FORT ELFSBORG ROAD

SALEM, NJ 08079

ACADEMIC ACHIEVEMENT

SALEM

ELSINBORO TWP

GRADE SPAN KG-08

NJASK Results - Math Grade Level - 05

NJASK Proficiency Trends - Math - Grade Level - 05

This table presents the grade level proficiency results, as measured by NJASK, in Advanced Proficient, Proficient, and Partially Proficient categories for all appropriate subgroups.

This graph presents the grade level outcomes in the categories of Advanced Proficient, Proficient, and Partially Proficient over the last four years.

Subgroups	Advanced Proficient	Proficient	Partially Proficient
Schoolwide	-	-	-
White	-	-	-
Black	-	-	-
Hispanic	-	-	-
American Indian	N/A	N/A	N/A
Asian	N/A	N/A	N/A
Two or More Races	-	-	-
Students w/ Disability	-	-	-
Limited English Proficient Students	N/A	N/A	N/A
Economically Disadvantaged Students	-	-	-

Data is suppressed to protect the confidentiality of the students.

Data is presented for subgroups when the count is high enough under NCLB suppression rules.

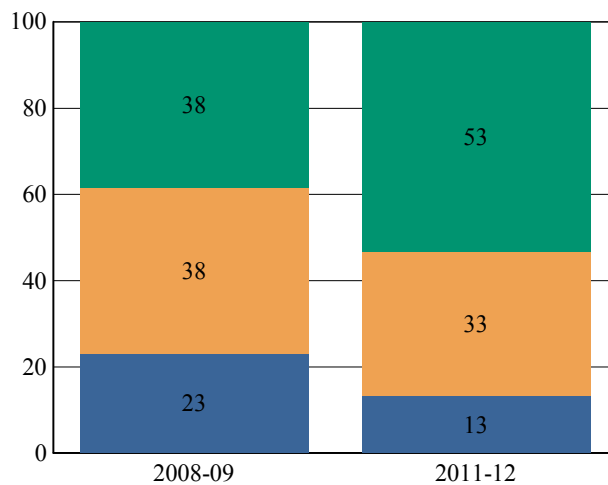
NJASK Results - Math Grade Level - 06

NJASK Proficiency Trends - Math - Grade Level - 06

This table presents the grade level proficiency results, as measured by NJASK, in Advanced Proficient, Proficient, and Partially Proficient categories for all appropriate subgroups.

This graph presents the grade level outcomes in the categories of Advanced Proficient, Proficient, and Partially Proficient over the last four years.

Subgroups	Advanced Proficient	Proficient	Partially Proficient
Schoolwide	53%	33%	13%
White	62%	23%	15%
Black	-	-	-
Hispanic	N/A	N/A	N/A
American Indian	N/A	N/A	N/A
Asian	N/A	N/A	N/A
Two or More Races	N/A	N/A	N/A
Students w/ Disability	-	-	-
Limited English Proficient Students	N/A	N/A	N/A
Economically Disadvantaged Students	-	-	-



Data is presented for subgroups when the count is high enough under NCLB suppression rules.



State of New Jersey

33-1350-050

ELSINBORO TWP

631 SALEM FORT ELFSBORG ROAD

SALEM, NJ 08079

ACADEMIC ACHIEVEMENT

SALEM

ELSINBORO TWP

GRADE SPAN KG-08

NJASK Results - Math Grade Level - 07

NJASK Proficiency Trends - Math - Grade Level - 07

This table presents the grade level proficiency results, as measured by NJASK, in Advanced Proficient, Proficient, and Partially Proficient categories for all appropriate subgroups.

This graph presents the grade level outcomes in the categories of Advanced Proficient, Proficient, and Partially Proficient over the last four years.

Subgroups	Advanced Proficient	Proficient	Partially Proficient
Schoolwide	-	-	-
White	-	-	-
Black	-	-	-
Hispanic	N/A	N/A	N/A
American Indian	N/A	N/A	N/A
Asian	N/A	N/A	N/A
Two or More Races	N/A	N/A	N/A
Students w/ Disability	-	-	-
Limited English Proficient Students	N/A	N/A	N/A
Economically Disadvantaged Students	-	-	-

Data is suppressed to protect the confidentiality of the students.

Data is presented for subgroups when the count is high enough under NCLB suppression rules.

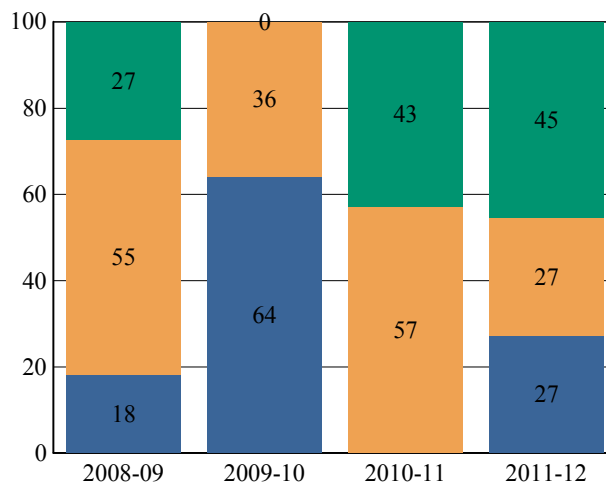
NJASK Results - Math Grade Level - 08

NJASK Proficiency Trends - Math - Grade Level - 08

This table presents the grade level proficiency results, as measured by NJASK, in Advanced Proficient, Proficient, and Partially Proficient categories for all appropriate subgroups.

This graph presents the grade level outcomes in the categories of Advanced Proficient, Proficient, and Partially Proficient over the last four years.

Subgroups	Advanced Proficient	Proficient	Partially Proficient
Schoolwide	45%	27%	27%
White	-	-	-
Black	-	-	-
Hispanic	N/A	N/A	N/A
American Indian	N/A	N/A	N/A
Asian	N/A	N/A	N/A
Two or More Races	-	-	-
Students w/ Disability	-	-	-
Limited English Proficient Students	N/A	N/A	N/A
Economically Disadvantaged Students	-	-	-



Data is presented for subgroups when the count is high enough under NCLB suppression rules.



**ACADEMIC ACHIEVEMENT**

ELSINBORO TWP

SALEM

631 SALEM FORT ELFSBORG ROAD

ELSINBORO TWP

GRADE SPAN KG-08

SALEM, NJ 08079

**2011 National Assessment Educational Progress (NAEP)**

The National Assessment of Educational Progress (NAEP) is the largest national assessment of what our nation's students know and can do. NAEP assesses fourth-, eighth-, and twelfth-grade students in subjects such as reading, mathematics, science, and writing. The reporting of NAEP scores on state report cards is a federal mandate. The results of NAEP are also published as the Nation's Report Card, and are available for the nation, states, and, in some cases, urban districts. The NAEP scores on the report card include grades four and eight 2011 reading and math scores for New Jersey which are the last scores published. For subgroup outcomes, visit :

<http://www.nj.gov/education/pr/2013/naep/naep4math.html>

For more information, visit <http://nces.ed.gov/nationsreportcard/>

**Proficiency Percentages**

Grade 4 Math	State/Nation	Below Basic	Basic	Proficient	Advanced
All Students	State (NJ)	11.0	38.3	40.9	9.8
All Students	Nation	18.1	42.3	33.2	6.5

**2011 National Assessment Educational Progress (NAEP)**

The National Assessment of Educational Progress (NAEP) is the largest national assessment of what our nation's students know and can do. NAEP assesses fourth-, eighth-, and twelfth-grade students in subjects such as reading, mathematics, science, and writing. The reporting of NAEP scores on state report cards is a federal mandate. The results of NAEP are also published as the Nation's Report Card, and are available for the nation, states, and, in some cases, urban districts. The NAEP scores on the report card include grades four and eight 2011 reading and math scores for New Jersey which are the last scores published. For subgroup outcomes, visit :

<http://www.nj.gov/education/pr/2013/naep/naep8math.html>

For more information, visit <http://nces.ed.gov/nationsreportcard/>

**Proficiency Percentages**

Grade 8 Math	State/Nation	Below Basic	Basic	Proficient	Advanced
All Students	State (NJ)	17.8	35.3	33.2	13.6
All Students	Nation	27.7	38.8	25.7	7.8



State of New Jersey

33-1350-050

ELSINBORO TWP

631 SALEM FORT ELFSBORG ROAD

SALEM, NJ 08079

ACADEMIC ACHIEVEMENT

SALEM

ELSINBORO TWP

GRADE SPAN KG-08

NJASK Results - Science Grade Level - 04

This table presents the grade level proficiency results, as measured by NJASK, in Advanced Proficient, Proficient, and Partially Proficient categories for all appropriate subgroups.

Subgroups	Advanced Proficient	Proficient	Partially Proficient
Schoolwide	-	-	-
White	-	-	-
Black	-	-	-
Hispanic	N/A	N/A	N/A
American Indian	N/A	N/A	N/A
Asian	N/A	N/A	N/A
Two or More Races	N/A	N/A	N/A
Students w/ Disability	-	-	-
Limited English Proficient Students	N/A	N/A	N/A
Economically Disadvantaged Students	-	-	-

Data is presented for subgroups when the count is high enough under NCLB suppression rules.

NJASK Results - Science Grade Level - 08

This table presents the grade level proficiency results, as measured by NJASK, in Advanced Proficient, Proficient, and Partially Proficient categories for all appropriate subgroups.

Subgroups	Advanced Proficient	Proficient	Partially Proficient
Schoolwide	36%	45%	18%
White	-	-	-
Black	-	-	-
Hispanic	N/A	N/A	N/A
American Indian	N/A	N/A	N/A
Asian	N/A	N/A	N/A
Two or More Races	-	-	-
Students w/ Disability	-	-	-
Limited English Proficient Students	N/A	N/A	N/A
Economically Disadvantaged Students	-	-	-

Data is presented for subgroups when the count is high enough under NCLB suppression rules.

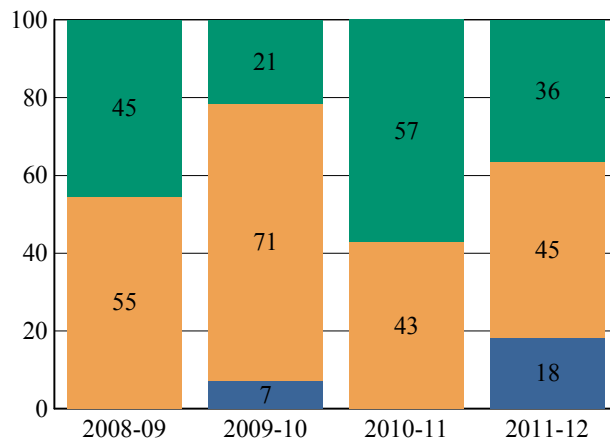
NJASK Proficiency Trends - Science - Grade Level - 04

This graph presents the grade level outcomes in the categories of Advanced Proficient, Proficient, and Partially Proficient over the last four years.

Data is suppressed to protect the confidentiality of the students.

NJASK Proficiency Trends - Science - Grade Level - 08

This graph presents the grade level outcomes in the categories of Advanced Proficient, Proficient, and Partially Proficient over the last four years.





# State of New Jersey

33-1350-050

## COLLEGE AND CAREER READINESS

SALEM  
ELSINBORO TWP

GRADE SPAN KG-08

ELSINBORO TWP  
631 SALEM FORT ELFSBORG ROAD  
SALEM, NJ 08079

Students in both elementary and middle schools begin to demonstrate college readiness behaviors long before they even enter high school. Among the behaviors that research has shown to be indicative of success and college and career readiness are regularly attending school and challenging themselves with rigorous course work. First, the table presents the percentage of students, as measured against the school's enrollment in seventh and eighth grade, who were reported via NJSMART as being enrolled in Algebra I. The table also presents the percentage of students who were chronically absent during the prior school year. A chronically absent student is a student who was not present for any reason for more than 10% of the total days possible for that individual student.

The first column - Schoolwide Performance - represents the outcomes for these particular indicators in this school. The second column - Peer School Percentile Rank - indicates how the school's performance compares to its group of peer schools. For example, a school whose peer school rank is 65 in Algebra I Enrollment has a higher Algebra I Enrollment than 65% of its peer group. The third column - Statewide Percentile Rank - indicates how the school's performance compares to schools across the state. The fourth column - Statewide Target - provides the statewide targets for each of these indicators. The last column - Met Target? - indicates whether the School Performance met or exceeded the statewide target.

The Summary row presents the averages of the peer school percentile ranks, the average of statewide percentile ranks and the percentage of statewide targets met.

College and Career Readiness Indicators	School Performance	Peer Rank (Percentile)	Statewide Rank (Percentile)	Statewide Target	Met Target?
Students taking Algebra (%)	0%	0	0	20%	NO
Chronic Absenteeism (%)	11%	19	29	6%	NO
Summary		10	15		0%

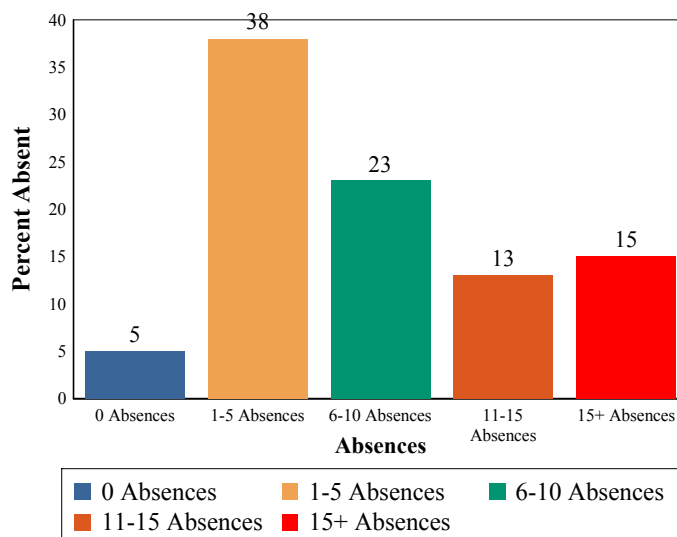
### Algebra I

This table presents the percentage of seventh and eighth graders who were reported in the Algebra I course code in NJSMART and the percentage of those students who earned a C or higher in the course.

2011-12	School
Students taking Algebra I	0%
Algebra grade (C or better)	0%

### Absenteeism

The chart below presents the percentage of students who were absent in each category of absence: 0 absences, 1- 5 absences, 6- 10 absences, 11 - 15 absences, and more than 15 absences. An absence is defined as being 'not present' and includes the days missed regardless of whether they were determined to be excused or unexcused by the school.





State of New Jersey

33-1350-050

ELSINBORO TWP

631 SALEM FORT ELFSBORG ROAD

SALEM, NJ 08079

**STUDENT GROWTH**

SALEM  
ELSINBORO TWP

GRADE SPAN KG-08

This section of the performance report presents data about student growth, utilizing the Student Growth Percentile Methodology (SGP). SGP creates a measure of how students progressed in grades 4 through 8 in NJ ASK Language Arts Literacy and Math when compared to other students with a similar NJ ASK test score history. A short video explaining the methodology can be found here: <http://www.state.nj.us/education/njsmart/performance/>

The first column - Schoolwide Performance - presents the schoolwide median growth score in either Language Arts Literacy or Math for all students in the school. The second column - Peer Rank - indicates how the school's growth performance compares to its group of peer schools. The third column - Statewide Rank - indicates how a school compares to schools across the state. The last column - Met Target? - indicates whether the school's performance met or exceeded the target.

The summary row presents the averages of the peer school percentile ranks, the averages of statewide percentile ranks, the percentage of statewide targets met.

Student Growth Indicators	Schoolwide Performance	Peer Rank (Percentile)	Statewide Rank (Percentile)	Statewide Target	Met Target?
Student Growth on Language Arts	53	80	67	35	YES
Student Growth on Math	61	100	88	35	YES
		90	78		100%

**Student Growth**

This table presents for all students with growth scores the interaction between their proficiency level on NJASK and their growth scores. For example, in the top left cell the percentage of students who are both partially proficient AND also demonstrating low growth is displayed.

**Language Arts**

**Math**

	GROWTH		
	Low	Typical	High
Partially Proficient	17%	15%	4%
Proficient	13%	21%	26%
Advanced Proficient	0%	0%	4%

	GROWTH		
	Low	Typical	High
Partially Proficient	9%	9%	0%
Proficient	17%	6%	13%
Advanced Proficient	6%	9%	32%

**Low Growth** is defined as an **Student Growth Percentile** score less than 35.

**Typical Growth** is defined as an **Student Growth Percentile** score between 35 and 65.

**High Growth** is defined as a **Student Growth Percentile** score higher than 65.



# State of New Jersey

33-1350-050

ELSINBORO TWP

631 SALEM FORT ELFSBORG ROAD

SALEM, NJ 08079

## WITHIN SCHOOL ACHIEVEMENT GAP

SALEM

ELSINBORO TWP

GRADE SPAN KG-08

This section of the performance report presents data about the achievement gap that exists within a school - as measured by the difference between the students' scale scores at the 25th and 75th percentile in the school, the so-called Interquartile Range (IQR). Taken together with an understanding of the overall and average achievement levels in the school, the IQR furthers an understanding of the range of student outcomes that exist in a school. A school gap smaller than the state gap indicates that the school's range of student outcomes is narrower than the state's while a school gap larger than the state gap indicates that the school's range of student outcomes is larger than the state's.

### Grade Level - 06

#### NJ ASK Language Arts 25th %ile vs 75th%ile

This table presents the scale scores associated with students at the bottom (0th percentile), the 25th percentile, the 50th percentile, the 75th percentile and the top (99th percentile) of school's distribution

Percentile	Scale Score
99th	229
75th	215
50th	204
25th	191
0th	162

	Scale Score Gap - School	Scale Score Gap - State
25th vs 75th Gap	25	34

### Grade Level - 06

#### NJ ASK Math 25th %ile vs 75th%ile

This table presents the scale scores associated with students at the bottom (0th percentile), the 25th percentile, the 50th percentile, the 75th percentile and the top (99th percentile) of school's distribution

Percentile	Scale Score
99th	300
75th	269
50th	248
25th	227
0th	166

	Scale Score Gap - School	Scale Score Gap - State
25th vs 75th Gap	42	57

### Grade Level - 08

#### NJ ASK Language Arts 25th %ile vs 75th%ile

This table presents the scale scores associated with students at the bottom (0th percentile), the 25th percentile, the 50th percentile, the 75th percentile and the top (99th percentile) of school's distribution

Percentile	Scale Score
99th	249
75th	234
50th	224
25th	199
0th	156

	Scale Score Gap - School	Scale Score Gap - State
25th vs 75th Gap	35	33

### Grade Level - 08

#### NJ ASK Math 25th %ile vs 75th%ile

This table presents the scale scores associated with students at the bottom (0th percentile), the 25th percentile, the 50th percentile, the 75th percentile and the top (99th percentile) of school's distribution

Percentile	Scale Score
99th	284
75th	251
50th	243
25th	218
0th	141

	Scale Score Gap - School	Scale Score Gap - State
25th vs 75th Gap	33	64





**SCHOOL CLIMATE**

ELSINBORO TWP

SALEM

631 SALEM FORT ELFSBORG ROAD

ELSINBORO TWP

GRADE SPAN KG-08

SALEM, NJ 08079

**Length of School Day**

This table presents the amount of time a school is in session for a typical student on a normal school day.

	School
2011-12	6 Hrs 35 Mins

**Student Suspension Rate**

This table presents the percentage of students who were suspended one or more times during the school year.

	School
2011-12	1.0%

**Instructional Time**

This table presents the amount of time that a typical student is engaged in instructional activities under the supervision of a certified teacher.

2011-12	School
Full Time	5 Hrs 50 Mins.
Shared Time	0 Hrs. 0 Mins.

**Student Expulsions**

This table presents the number of students who were expelled from the school and district during the school year.

	School
2011-12	0

**Student to Staff Ratio**

This table presents the count of students per faculty member or administrator in the school. All staff are counted in full-time equivalents.

2011-12	School
Faculty	7.9
Administrators	

**SCHOOL PEER GROUP****ELSINBORO TWP****33-1350-050**

This table presents the list of peer schools in alphabetical order by county name that was created specifically for this school (highlighted in yellow). Peer schools are drawn from across the state and represent schools that have similar grade configurations and that are educating students of similar demographic characteristics, as measured by enrollment in Free/Reduced Lunch Programs, Limited English Proficiency or Special Education Programs.

<u>COUNTY NAME</u>	<u>DISTRICT NAME</u>	<u>SCHOOL NAME</u>	<u>CDS CODE</u>	<u>GRADE SPAN</u>	<u>FRPL</u>	<u>LEP</u>	<u>SpED</u>
ATLANTIC	EGG HARBOR TWP	ALDER AVE MIDDLE SCH	01-1310-038	06-08	41.5%	0.8%	11.5%
ATLANTIC	EGG HARBOR TWP	FERNWOOD MIDDLE SCH	01-1310-039	06-08	40.9%	1.8%	10.2%
ATLANTIC	VENTNOR CITY	VENTNOR MIDDLE SCHOOL	01-5350-040	05-08	63.3%	7.7%	9.9%
BERGEN	CLIFFSIDE PARK BORO	NUMBER 6	03-0890-080	KG-08	52.0%	8.2%	14.1%
BERGEN	ENGLEWOOD CITY	J E DISMUS MIDDLE	03-1370-076	07-08	64.7%	11.3%	14.8%
BURLINGTON	FLORENCE TWP	RIVERFRONT SCHOOL	05-1520-055	PK-08	32.8%	0.6%	12.3%
CAMDEN	MERCHANTVILLE BORO	MERCHANTVILLE ELEM	07-3110-060	PK-08	38.2%	2.5%	12.1%
CAMDEN	OAKLYN BORO	OAKLYN PUBLIC	07-3770-050	PK-09	40.6%	5.3%	16.0%
CHARTERS	M E T S CHARTER SCHOOL	M E T S CHARTER SCHOOL	80-6068-951	06-09	64.5%	0.0%	0.0%
CUMBERLAND	DEERFIELD TWP	DEERFIELD	11-1020-040	PK-08	48.1%	4.2%	9.8%
GLOUCESTER	DELSEA REGIONAL H.S DIST.	DELSEA REGIONAL MIDDLE	15-4940-060	07-08	31.8%	0.0%	12.3%
HUDSON	HUDSON COUNTY VOCATIONAL	EXPLORE 2000 MIDDLE SCHOOL	17-2295-090	06-08	57.6%	0.0%	2.2%
HUDSON	JERSEY CITY	RAFAEL DE J CORDERO NO 37	17-2390-300	PK-08	53.9%	6.1%	11.5%
HUDSON	KEARNY TOWN	SCHUYLER	17-2410-110	PK-08	31.8%	0.0%	11.2%
HUNTERDON	HAMPTON BORO	HAMPTON BORO	19-1970-050	PK-08	38.2%	0.0%	12.1%
MIDDLESEX	EDISON TWP	THOMAS JEFFERSON MIDDLE	23-1290-060	06-08	33.5%	2.4%	17.1%
MIDDLESEX	HIGHLAND PARK BORO	HIGHLAND PARK MIDDLE SCH	23-2150-060	06-08	30.8%	0.3%	15.7%
MIDDLESEX	NORTH BRUNSWICK TWP	LINWOOD MIDDLE	23-3620-065	06-08	34.6%	2.7%	14.2%
MIDDLESEX	PERTH AMBOY CITY	SAMUEL E SHULL MIDDLE	23-4090-150	05-08	67.4%	11.1%	9.2%
MIDDLESEX	PISCATAWAY TWP	QUIBBLETOWN MIDDLE	23-4130-055	06-08	39.1%	1.4%	13.3%
MONMOUTH	NEPTUNE CITY	WOODROW WILSON	25-3500-060	PK-08	39.0%	4.3%	14.1%
MONMOUTH	UNION BEACH	MEMORIAL	25-5230-050	PK-08	36.5%	0.4%	12.4%
PASSAIC	CLIFTON CITY	CHRISTOPHER COLUMBUS MID	31-0900-035	06-08	52.7%	9.3%	13.5%
PASSAIC	PROSPECT PARK BORO	NUMBER 1 PROSPECT PARK	31-4270-010	PK-08	61.0%	6.1%	8.7%
PASSAIC	WOODLAND PARK	MEMORIAL	31-5690-070	05-08	36.1%	2.6%	16.0%
<b>SALEM</b>	<b>ELSINBORO TWP</b>	<b>ELSINBORO TWP</b>	<b>33-1350-050</b>	<b>KG-08</b>	<b>32.6%</b>	<b>0.0%</b>	<b>13.1%</b>
SALEM	QUINTON TWP	QUINTON TWP	33-4280-050	PK-08	40.5%	0.0%	9.6%
SOMERSET	FRANKLIN TWP	FRANKLIN MIDDLE SCHOOL	35-1610-160	07-08	41.3%	4.2%	15.1%
UNION	PLAINFIELD CITY	CEDARBROOK	39-4160-100	KG-08	63.1%	12.3%	14.6%
UNION	ROSELLE PARK BORO	ROSELLE PARK MIDDLE	39-4550-085	06-08	34.4%	2.7%	14.5%
UNION	UNION TWP	KAWAMEEH MIDDLE SCHOOL	39-5290-070	05-08	33.0%	1.2%	15.8%