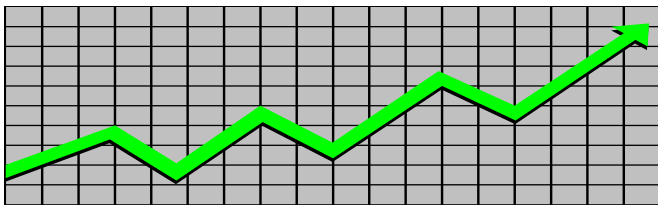


State of New Jersey
Department of Human Services
Division of Family Development

CURRENT PROGRAM STATISTICS



March 2021

Natasha Johnson, Assistant Commissioner

TABLE OF CONTENTS

HIGHLIGHTS:

WFNJ/TANF	ii
NJ SNAP	ii
EMERGENCY ASSISTANCE	ii
GENERAL ASSISTANCE	iii
GA Emergency Assistance.....	iii
GA Program.....	iii
CHILD SUPPORT SERVICES	iii
WORK FIRST NEW JERSEY (WFNJ)	iii
STATISTICS- BY STATE & COUNTY	1
Table 1: WFNJ/TANF Families & Persons (NJ Statewide) March 2019 to 2021.....	1
Table 2: WFNJ/TANF Families (by County)- March 2021.....	2
Table 2B: WFNJ/TANF Persons, Adults, & Children (by County)- March 2021.....	3
Table 3: TANF Work Participation Rates Over 12 Month Period (by County)- March 2021.....	4
Table 4: TANF Work Participation Rates Over 12 Month Period (NJ Statewide)- March 2021.....	5
Table 5: NJ SNAP Households/Persons (NJ Statewide) March 2019 to 2021.....	6
Table 6: NJ SNAP Recipient Trends (NJ Statewide) March 2019 to 2021.....	7
Table 7: NJ SNAP Households/Persons (by County)- March 2021.....	8
Table 8: Emergency Assistance Program (NJ Statewide) March 2019 to 2021.....	9
Table 9: Emergency Assistance Program (by County)- March 2021.....	10
Table 10: General Assistance Program (NJ Statewide) March 2019 to 2021.....	11
Table 11: General Assistance Program (by County)- March 2021.....	12
Table 12: Child Support Services Distributions (NJ Statewide) FFY 2021.....	13
Table 13: Child Support Services Paternities Established- March 2021.....	14
Table 14: Child Support Services Cases With Orders- March 2021.....	15
Table 15: Child Support Services Collections On Current Support- March 2021.....	16
Table 16: Child Support Services Cases With Payments On Arrears- March 2021.....	17
Table 17: WFNJ Statistical Summary- March 2021.....	18
ACRONYMS	19
EXPLANATORY NOTES	20
WFNJ Statistical Summary (Table 17).....	20

DIVISION OF FAMILY DEVELOPMENT CURRENT PROGRAM STATISTICS

MARCH 2021

Each month the Division of Family Development publishes its program statistics for: WFNJ/TANF, NJ SNAP, Emergency Assistance, General Assistance, and Child Support Services. When possible, information is provided separately for children and adults. Many tables also provide trend data with information broken down by county for readers to consider. This report is compiled and prepared by The Bureau of Research & Reporting.

WFNJ/TANF

- At the end of March, the TANF caseload had decreased by 413 cases, from 10,705 in March 2020 to 10,292 in March 2021; a decrease of -3.9%.

- The counties with caseloads that increased the most since March 2020 were Hudson (16.3%), Hunterdon (12.2%), and Warren (11%).

- The counties with caseloads that decreased the most since March 2020 were Sussex (-42.5%), Gloucester (-22.4%), and Morris (-22.1%).

- Of the WFNJ/TANF cases, 3,311 or 32.2% were child-only in March 2021.

- The counties with the most child-only cases were Camden (545), Essex (407), and Hudson (392).

- Essex (4,382), Hudson (3,762), and Camden (3,368) counties had the greatest number of persons receiving TANF in March 2021.

NJ SNAP (Formerly FOOD STAMPS)

- In March 2021, there were 427,891 households receiving NJ SNAP benefits. The number of NJ SNAP households increased by 92,874 or 27.7%, since March 2020.

- There were 831,525 persons receiving NJ SNAP benefits as of March 2021; an increase of 174,161 or 26.5% since March 2020.

- The counties having the highest caseload increase since March 2020 were Hudson (48.8%), Warren (35.7%), and Union (35.5%).

EMERGENCY ASSISTANCE

- There were 1,513 TANF families receiving Emergency Assistance (EA) in March 2021; a decrease of 210 or -12.2% since March 2020.

- In March 2021, EA payments were made for 709 SSI recipients.

DIVISION OF FAMILY DEVELOPMENT CURRENT PROGRAM STATISTICS MARCH 2021

- There were 2,224 GA cases with Emergency Assistance payments in March 2021; an increase of 228 or 11.4% since March 2020.
- The counties that showed the highest percent increase in Emergency Assistance payments were Hudson (188.4%), Monmouth (95.8%), and Cape May (88.2%).
- The counties that showed the highest percent decrease in Emergency Assistance payments were Cumberland (-70.6%), Gloucester (-54.3%), and Salem (-50%).

GENERAL ASSISTANCE

- The total numbers of cases receiving GA has increased from 10,858 to 14,051 since March 2020; an increase of 29.4%.
- There were 9,630 Employable GA and 4,421 Unemployable GA cases in March 2021.
- The counties that showed a percent increase for GA cases were Hudson (137.1%), Salem (61.9%), and Atlantic (52.4%) since March 2020.
- The counties that showed the highest percent decrease for GA cases since March 2020 were Gloucester (-18.2%), Sussex (-17.9%), and Hunterdon (-16.8%).
- In March 2021, GA cases showed a 4.1% increase since February 2021.

CHILD SUPPORT SERVICES (QUARTERLY REPORT)

- The total collection for the Child Support Services Program was about \$294 million from January 2021 to March 2021 ; a decrease of -4.7% over the same period from FFY 2020.
- Total distributions decreased -3.4% from March 2020.

WORK FIRST NEW JERSEY (WFNJ)

- During the report month of March 2021, there were 217 families in which at least one member was employed and an additional 34 families whose WFNJ assistance cases were closed due to employment - related earnings.
- The three counties with the greatest number of employed active WFNJ recipients were: Essex (34), Mercer (26), and Hudson (24).
- There were 290 former TANF cases receiving post-TANF support in the form of child care assistan

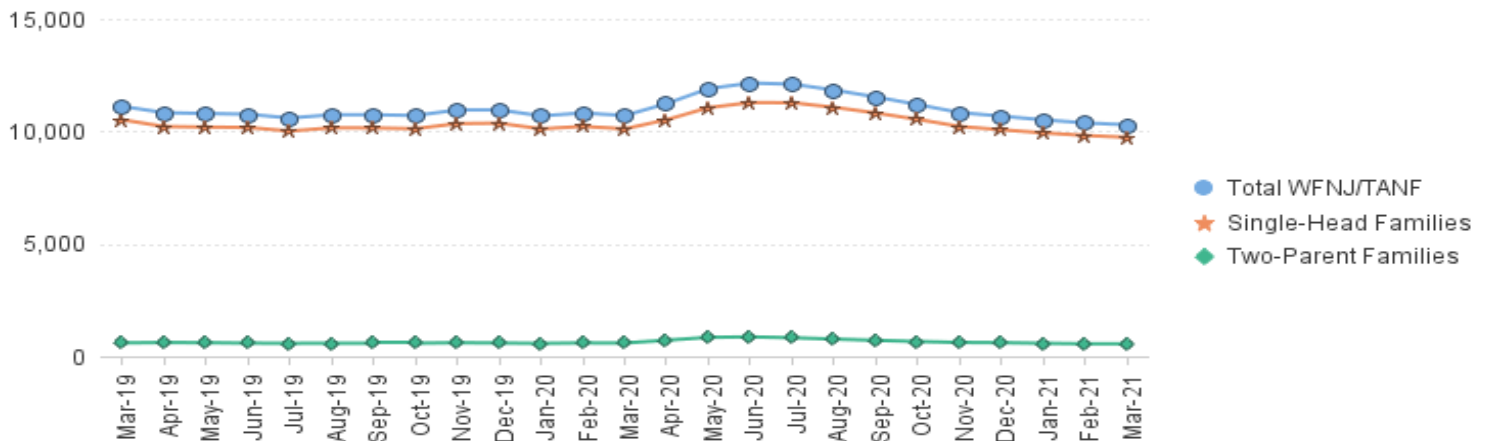
TABLE 1:

WFNJ/TANF STATEWIDE NUMBER OF APPLICATIONS AND TERMINATIONS DURING MARCH 2021
PROGRAM NUMBER OF ELIGIBLE FAMILIES & PERSONS RECEIVING WFNJ/TANF FOR MARCH 2021

MARCH 2019 THROUGH MARCH 2021

		Cases Added	Cases Closed	Child-Only Cases ‡	Total Single-Head Families	2-Parent Families	Total WFNJ/TANF Families	%CHNG (1 Yr.)	Total Persons	%CHNG (1 Yr.)	Adults	Children
2019	MAR	989	1,340	3,986	10,516	597	11,113	-22.3%	27,603	-23.2%	7,724	19,879
	APR	998	1,271	3,906	10,216	614	10,830	-21.5%	26,968	-22.0%	7,538	19,430
	MAY	1,084	1,174	3,830	10,191	606	10,797	-20.1%	26,865	-20.5%	7,573	19,292
	JUN	1,024	1,135	3,790	10,175	588	10,763	-19.3%	26,674	-19.7%	7,561	19,113
	JUL	1,040	1,231	3,710	10,014	580	10,594	-18.0%	26,323	-17.8%	7,464	18,859
	AUG	1,209	1,135	3,723	10,158	582	10,740	-16.1%	26,735	-18.6%	7,599	19,136
	SEP	1,055	1,048	3,679	10,153	586	10,739	-14.8%	26,803	-14.0%	7,646	19,157
	OCT	1,137	1,253	3,556	10,120	586	10,706	-14.1%	26,933	-13.3%	7,736	19,197
	NOV	1,181	1,159	3,664	10,348	605	10,953	-11.1%	27,644	-10.1%	7,894	19,750
	DEC	1,053	1,042	3,689	10,364	593	10,957	-9.5%	27,766	-8.4%	7,861	19,905
2019 Average		1,044	1,220	3,795	10,322	596	10,918		27,263		7,720	19,543
2020	JAN	921	1,183	3,646	10,113	576	10,689	-8.3%	27,129	-6.5%	7,619	19,510
	FEB	1,066	1,007	3,669	10,222	596	10,818	-3.1%	27,517	-1.1%	7,745	19,772
	MAR	915	1,024	3,612	10,113	592	10,705	-3.7%	27,196	-1.5%	7,685	19,511
	APR	1,179	712	3,621	10,519	716	11,235	3.7%	28,765	6.7%	8,330	20,435
	MAY	832	232	3,696	11,057	845	11,902	10.2%	30,734	14.4%	9,051	21,683
	JUN	539	278	3,722	11,281	866	12,147	12.9%	31,370	17.6%	9,291	22,079
	JUL	458	526	3,686	11,274	826	12,100	14.2%	31,216	18.6%	9,240	21,976
	AUG	410	660	3,665	11,070	768	11,838	10.2%	30,454	13.9%	8,941	21,513
	SEP	475	796	3,603	10,817	711	11,528	7.3%	29,531	10.2%	8,636	20,895
	OCT	534	904	3,564	10,532	659	11,191	4.5%	28,657	6.4%	8,286	20,371
	NOV	419	767	3,470	10,218	617	10,835	-1.1%	27,738	0.3%	7,982	19,756
	DEC	434	595	3,410	10,071	607	10,678	-2.5%	27,371	-1.4%	7,875	19,496
2020 Average		682	724	3,614	10,607	698	11,306		28,973		8,390	20,583
2021	JAN	400	585	3,379	9,932	580	10,512	-1.7%	26,960	-0.6%	7,713	19,247
	FEB	378	504	3,347	9,818	559	10,377	-4.1%	26,520	-3.6%	7,589	18,931
	MAR	397	481	3,311	9,735	557	10,292	-3.9%	26,335	-3.2%	7,538	18,797
2021 Average to date		392	523	3,346	9,828	565	10,394		26,605		7,613	18,992

NJ STATEWIDE Eligible Families Receiving WFNJ/TANF MARCH 2019 THROUGH MARCH 2021

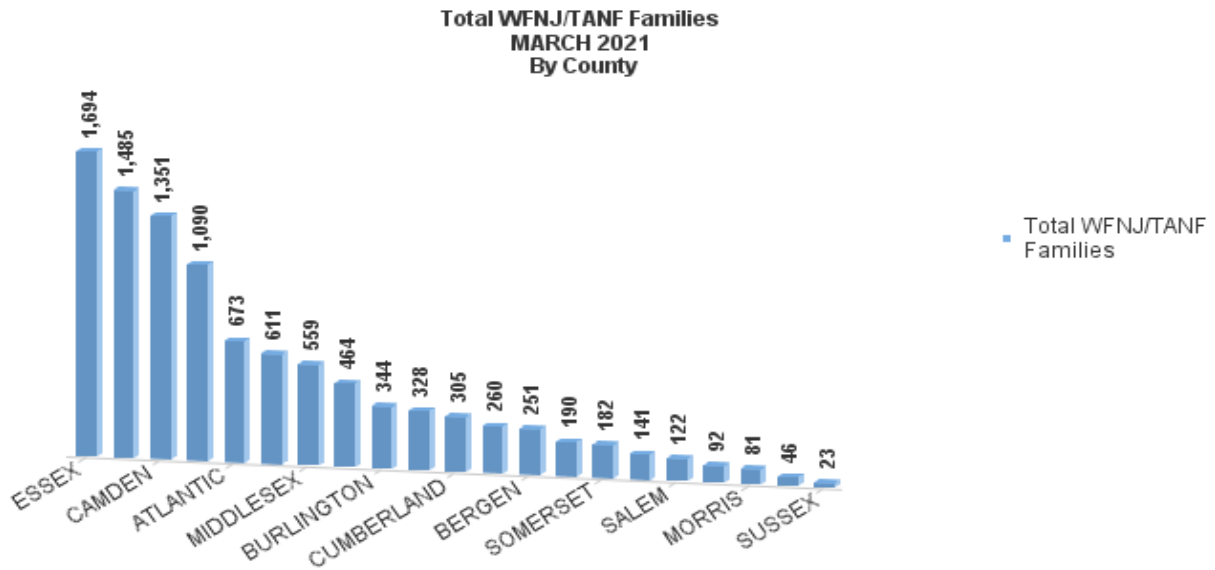


Data is derived from NJ MMIS Shared Data Warehouse Issuance files.
Effective July 2013 this data query source was converted to the SDW

‡ Child-only cases are defined as families in which no eligible adult receives TANF program benefits, yet the family continues to be headed by at least one of the biological parents, or grandparents, or other appropriate adult.

TABLE 2:
WFNJ/TANF NUMBER OF APPLICATIONS AND TERMINATIONS BY COUNTY DURING MARCH 2021
PROGRAM NUMBER OF ELIGIBLE FAMILIES RECEIVING WFNJ/TANF FOR MARCH 2021

County	Cases Added	Cases Closed **	Child-	1-Adult	Total		Total	%CHNG	%CHNG
			Only Cases ‡	Cases	Single-Head Families	2-Parent Families	WFNJ/TANF Families	(3 Mon)	(1 Yr.)
ATLANTIC	20	17	262	383	645	28	673	-2.2%	-9.2%
BERGEN	10	13	56	179	235	16	251	1.6%	-8.4%
BURLINGTON	21	8	125	205	330	14	344	5.5%	-17.7%
CAMDEN	44	61	545	748	1,293	58	1,351	-1.6%	-7.0%
CAPE MAY	7	2	35	51	86	6	92	4.5%	-13.2%
CUMBERLAND	11	7	138	153	291	14	305	0.7%	-21.2%
ESSEX	43	55	407	1,207	1,614	80	1,694	-2.9%	1.6%
GLOUCESTER	9	15	108	142	250	10	260	-8.1%	-22.4%
HUDSON	77	110	392	992	1,384	101	1,485	-5.3%	16.3%
HUNTERDON	0	2	10	31	41	5	46	4.5%	12.2%
MERCER	17	58	212	373	585	26	611	-8.0%	-11.6%
MIDDLESEX	29	20	212	316	528	31	559	1.5%	9.6%
MONMOUTH	15	14	75	109	184	6	190	-2.6%	-20.2%
MORRIS	5	2	26	43	69	12	81	1.3%	-22.1%
OCEAN	8	19	85	230	315	13	328	-0.3%	-10.4%
PASSAIC	33	34	343	689	1,032	58	1,090	0.6%	1.9%
SALEM	9	9	36	78	114	8	122	0.8%	-12.2%
SOMERSET	7	5	55	120	175	7	182	-3.2%	-12.5%
SUSSEX	0	1	8	11	19	4	23	-14.8%	-42.5%
UNION	22	17	142	273	415	49	464	-1.7%	-9.6%
WARREN	10	12	39	91	130	11	141	2.9%	11.0%
NJ Total	397	481	3,311	6,424	9,735	557	10,292	-2.1%	-3.9%



Data is derived from NJ MMIS Shared Data Warehouse Issuance files.
 Effective July 2013 this data query source was converted to the SDW

‡ Child-only cases are defined as families in which no eligible adult receives TANF program benefits, yet the family continues to be headed by at least one of the biological parents, or grandparents, or other appropriate adult

** 'Cases closed' include cases that received a benefit in the prior month, but did not receive any TANF benefit for the report month.

Δ=higher caseload % change

*=lower caseload % change

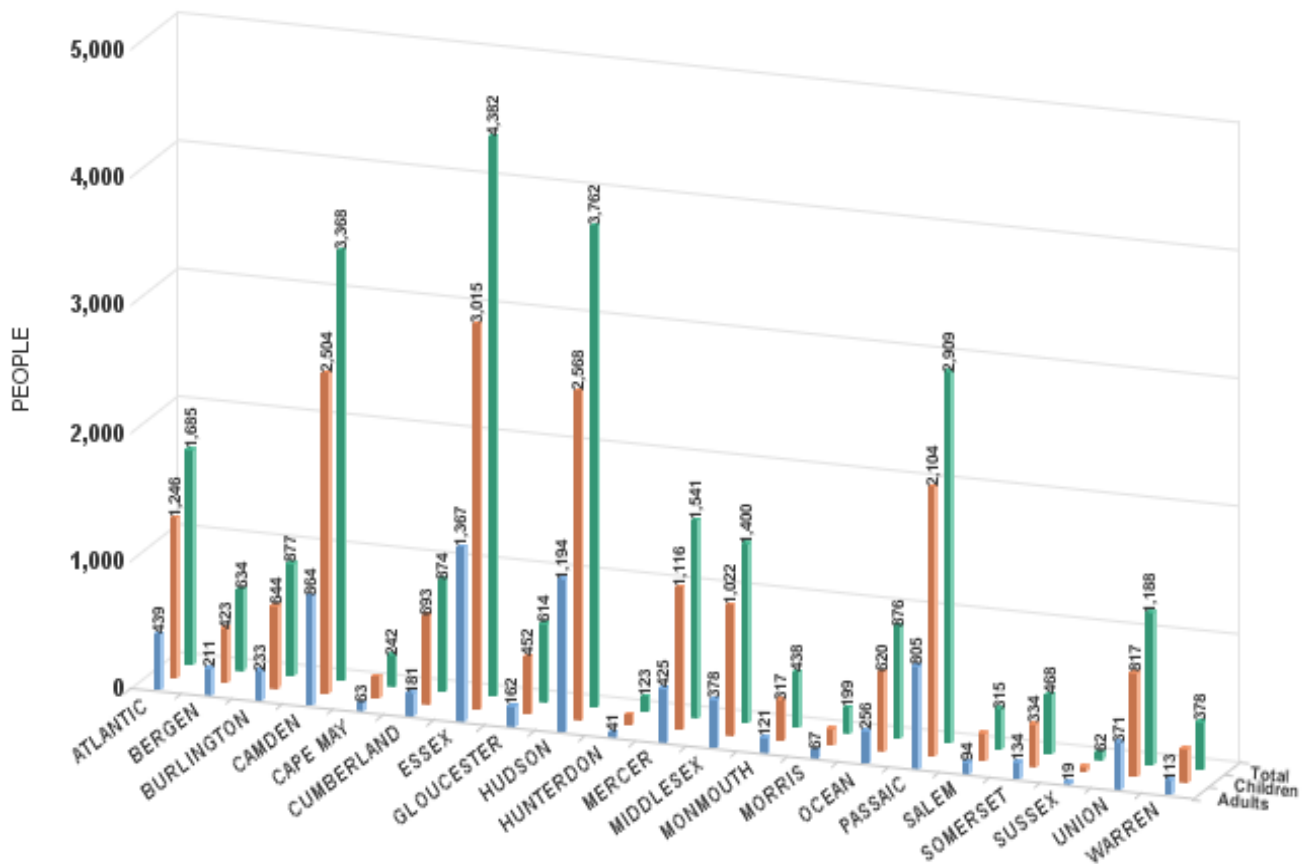
TABLE 2B :
WFNJ/TANF
PROGRAM **NUMBER OF PARTICIPATING PERSONS, ADULTS, AND CHILDREN**
BY COUNTY FOR MARCH 2021

PERSONS

County	Adults	Children	Child/Adult Ratio	Total Persons	% Chng (1 Yr)	Persons Per Case	
ATLANTIC	439	1,246	2.84	1,685	-10.6%	2.50	
BERGEN	211	423	2.00	634	-7.3%	2.53	
BURLINGTON	233	644	2.76	877	-16.7%	2.55	
CAMDEN	864	2,504	2.90	3,368	-7.8%	2.49	
CAPE MAY	63	179	2.84	242	-9.4%	2.63	
CUMBERLAND	181	693	3.83	874	-17.4%	2.87	
ESSEX	1,367	3,015	2.21	4,382	1.6%	2.59	
GLOUCESTER	162	452	2.79	614	-23.1%	*	2.36
HUDSON	1,194	2,568	2.15	3,762	17.5%	Δ	2.53
HUNTERDON	41	82	2.00	123	15.0%	Δ	2.67
MERCER	425	1,116	2.63	1,541	-9.1%		2.52
MIDDLESEX	378	1,022	2.70	1,400	8.7%		2.50
MONMOUTH	121	317	2.62	438	-16.9%		2.31
MORRIS	67	132	1.97	199	-26.0%	*	2.46
OCEAN	256	620	2.42	876	-7.4%		2.67
PASSAIC	805	2,104	2.61	2,909	3.7%		2.67
SALEM	94	221	2.35	315	-3.1%		2.58
SOMERSET	134	334	2.49	468	-13.7%		2.57
SUSSEX	19	43	2.26	62	-41.5%	*	2.70
UNION	371	817	2.20	1,188	-11.5%		2.56
WARREN	113	265	2.35	378	15.6%	Δ	2.68
NJ Total	7,538	18,797	2.49	26,335	-3.2%		2.56

Δ=higher caseload % change

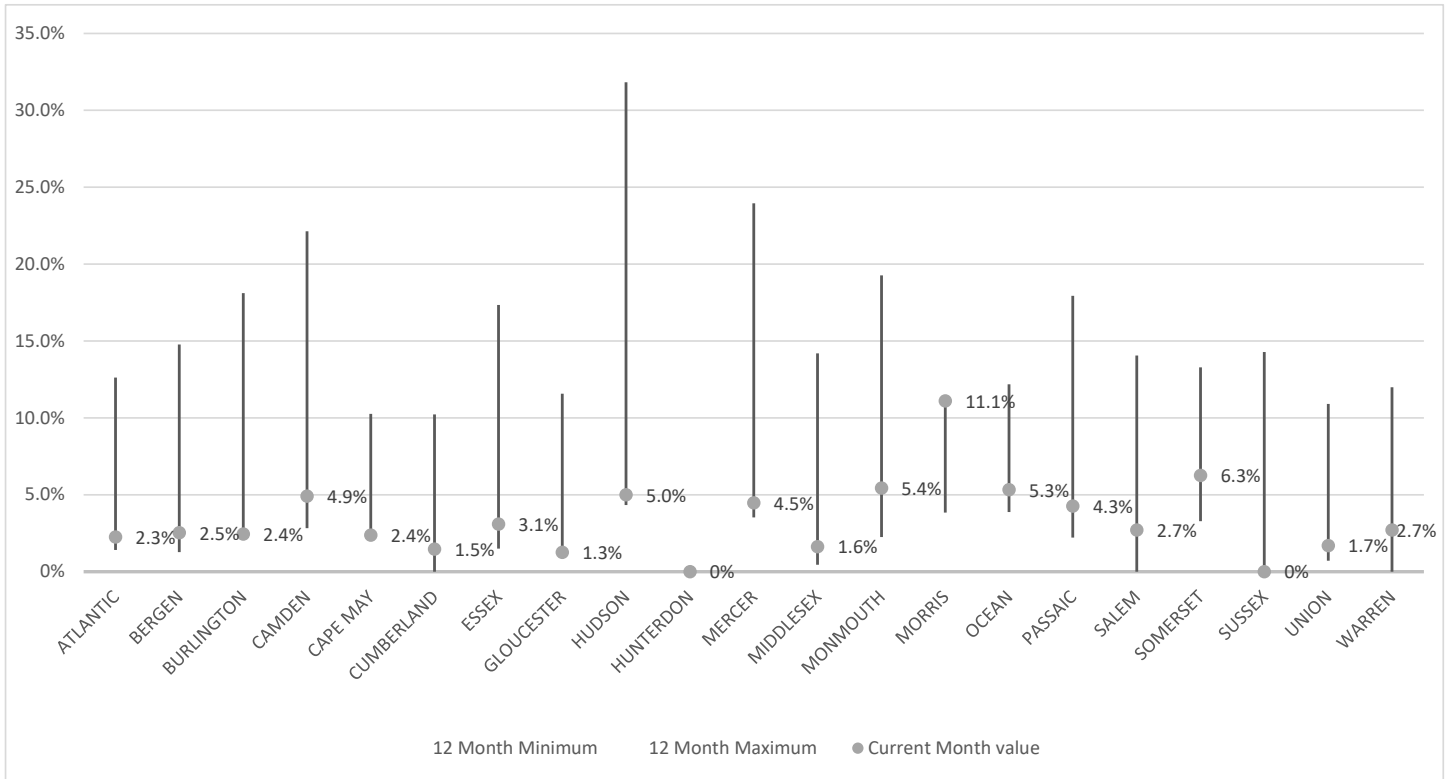
*=lower caseload % change



Data is derived from NJ MMIS Shared Data Warehouse Issuance files.
 Effective July 2013 this data query source was converted to the SDW

TABLE 3 :

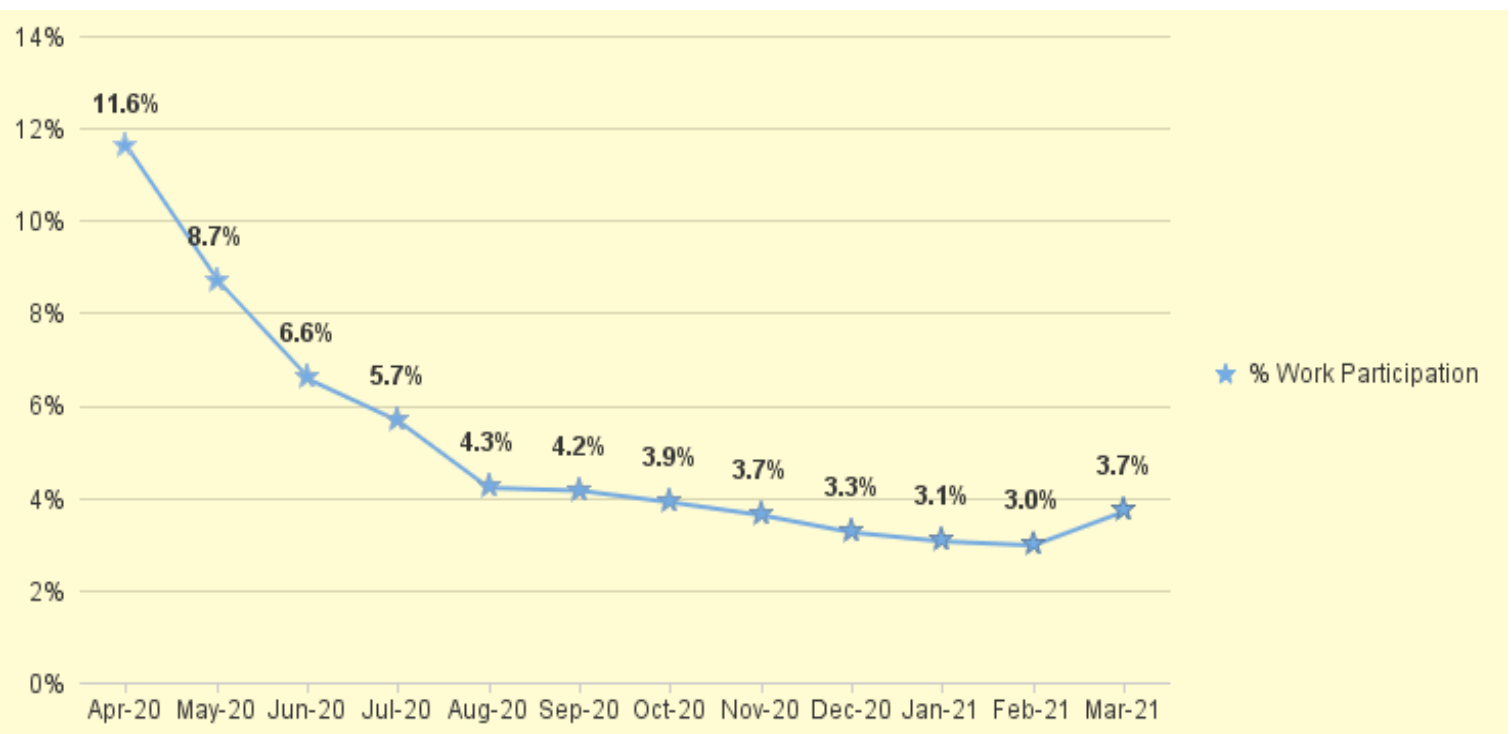
Work Participation Rates Achieved Over 12 Month Period
Ending with MARCH 2021



Data is derived from NJ MMIS Shared Data Warehouse Issuance files.
Effective July 2013 this data query source was converted to the SDW

TABLE 4 :

**WFNJ/TANF Work Participation Rates
for 12-Month Period Ending with MARCH 2021 Statewide**



* The Work Participation rate measures the number of countable Temporary Assistance for Needs Families (TANF) participants based on federal formula. The reported rate is considered to be preliminary until officially calculated by the federal government soon after the close of each federal fiscal year.

TABLE 5 :
NJ SNAP
NUMBER OF PARTICIPATING HOUSEHOLDS, PERSONS, ADULTS
(FOOD STAMPS) AND CHILDREN FOR MARCH 2021 (STATEWIDE)

MARCH 2019 THROUGH MARCH 2021

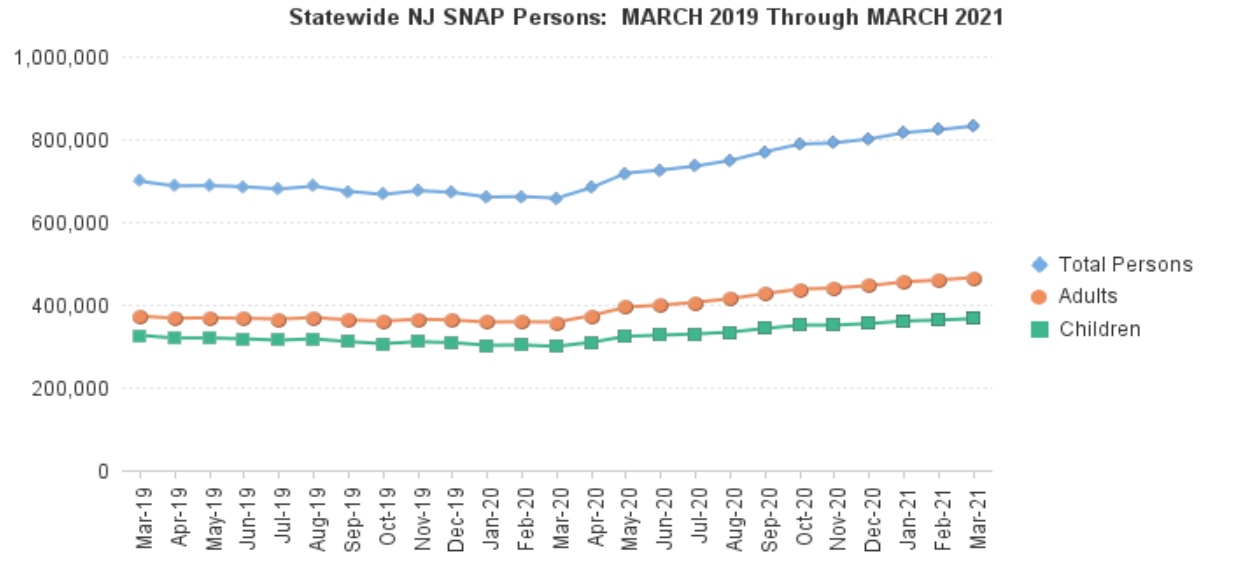
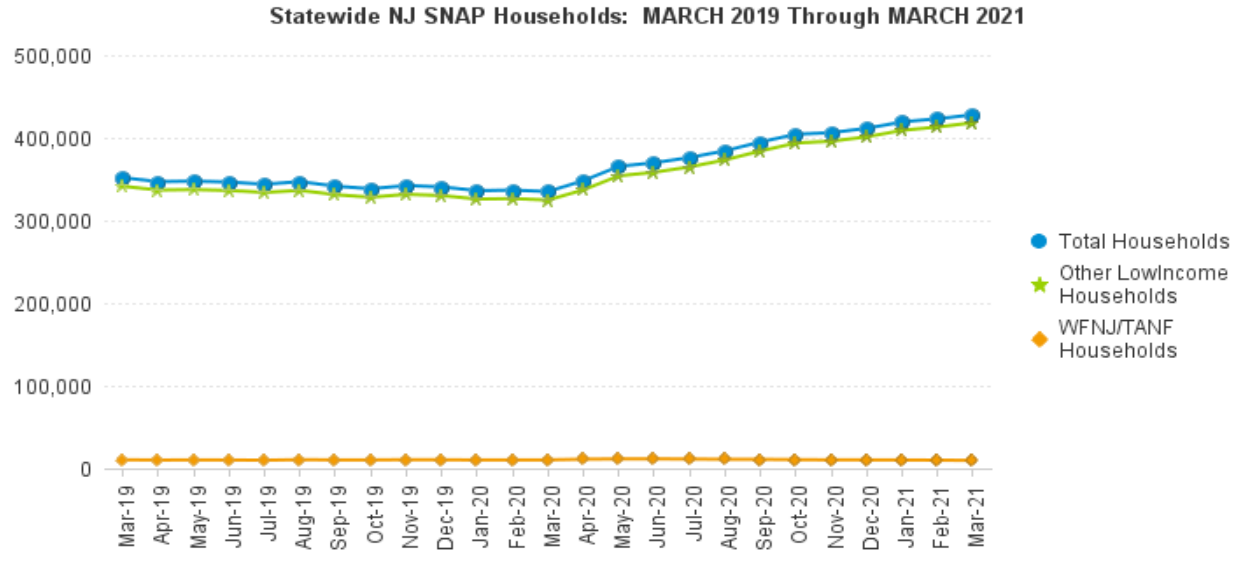
		HOUSEHOLDS				PERSONS				Age 60+	People with a disability
		WFNJ/ TANF	Other low income	Total	% CHNG (1 YR)	Adults	Children	TOTAL	% CHNG (1 YR)		
2019	MAR	10,469	341,314	351,783	-7.3%	372,223	325,898	698,121	-7.7%	123,658	205,933
	APR	10,136	336,819	346,955	-7.0%	367,367	319,361	686,728	-7.6%	122,716	204,624
	MAY	10,284	337,321	347,605	-6.4%	368,192	319,432	687,624	-7.2%	122,594	203,974
	JUN	10,149	336,301	346,450	-7.2%	367,279	317,566	684,845	-8.1%	122,060	203,512
	JUL	9,962	333,891	343,853	-6.4%	365,264	314,222	679,486	-7.2%	121,238	202,824
	AUG	10,570	336,384	346,954	-5.5%	368,890	317,373	686,263	-6.2%	121,200	203,620
	SEP	10,319	331,162	341,481	-7.0%	363,290	310,676	673,966	-7.8%	120,200	202,119
	OCT	10,242	328,140	338,382	-6.8%	360,298	305,917	666,215	-7.7%	119,254	200,853
	NOV	10,580	331,660	342,240	-5.1%	364,880	310,523	675,403	-5.8%	119,560	202,867
	DEC	10,445	330,157	340,602	-4.9%	362,992	308,279	671,271	-5.8%	119,046	205,081
	Average	10,313	334,715	345,028		366,125	315,561	681,686		121,550	203,671
	2020	JAN	10,201	325,866	336,067	-6.3%	358,028	301,901	659,929	-7.4%	117,898
FEB		10,245	326,468	336,713	0.4%	358,670	302,524	661,194	0.5%	117,775	201,863
MAR		10,328	324,689	335,017	-4.8%	357,989	299,375	657,364	-5.8%	117,369	201,521
APR		11,112	337,037	348,149	0.3%	373,744	309,095	682,839	-0.6%	118,173	204,375
MAY		11,513	353,998	365,511	5.2%	394,281	323,636	717,917	4.4%	119,744	208,152
JUN		11,522	358,302	369,824	6.7%	398,959	326,357	725,316	5.9%	120,137	209,224
JUL		11,336	364,797	376,133	9.4%	405,652	329,166	734,818	8.1%	120,881	211,115
AUG		11,044	373,293	384,337	10.8%	414,644	333,705	748,349	9.0%	118,173	204,375
SEP		10,928	384,063	394,991	15.7%	426,710	342,621	769,331	14.1%	122,341	214,255
OCT		10,605	393,716	404,321	19.5%	437,538	350,440	787,978	18.3%	123,068	216,012
NOV		10,335	395,876	406,211	18.7%	440,136	350,631	790,767	17.1%	123,104	216,208
DEC		10,308	401,212	411,520	20.8%	446,083	354,408	800,491	19.3%	123,498	221,131
Average	10,790	361,610	372,400		401,036	326,988	728,024		120,180	209,182	
2021	JAN	10,214	409,050	419,264	24.8%	454,910	360,490	815,400	23.6%	123,751	221,129
	FEB	9,980	413,080	423,060	25.6%	459,801	362,760	822,561	24.4%	123,888	221,585
	MAR	9,632	418,259	427,891	27.7%	465,302	366,223	831,525	26.5%	124,614	222,961
Average To Date	9,942	413,463	423,405		460,004	363,158	823,162		124,183	221,892	

This Table is based on those Households & Persons that received SNAP issuances (benefits) during the month

Data is derived from NJ MMIS Shared Data Warehouse.
 Effective July 2013 this data query source was converted to the SDW.

* Age 60+ and People with a disability columns are independent subsets of total persons. An individual might appear in both columns

TABLE 6:
NJ SNAP
(FOOD STAMPS) **TRENDS FOR PARTICIPATING HOUSEHOLDS & PERSONS**
MARCH 2019 THROUGH MARCH 2021 (STATEWIDE)



Data is derived from NJ MMIS Shared Data Warehouse Issuance files.

Effective July 2013 this data query source was converted to the SDW

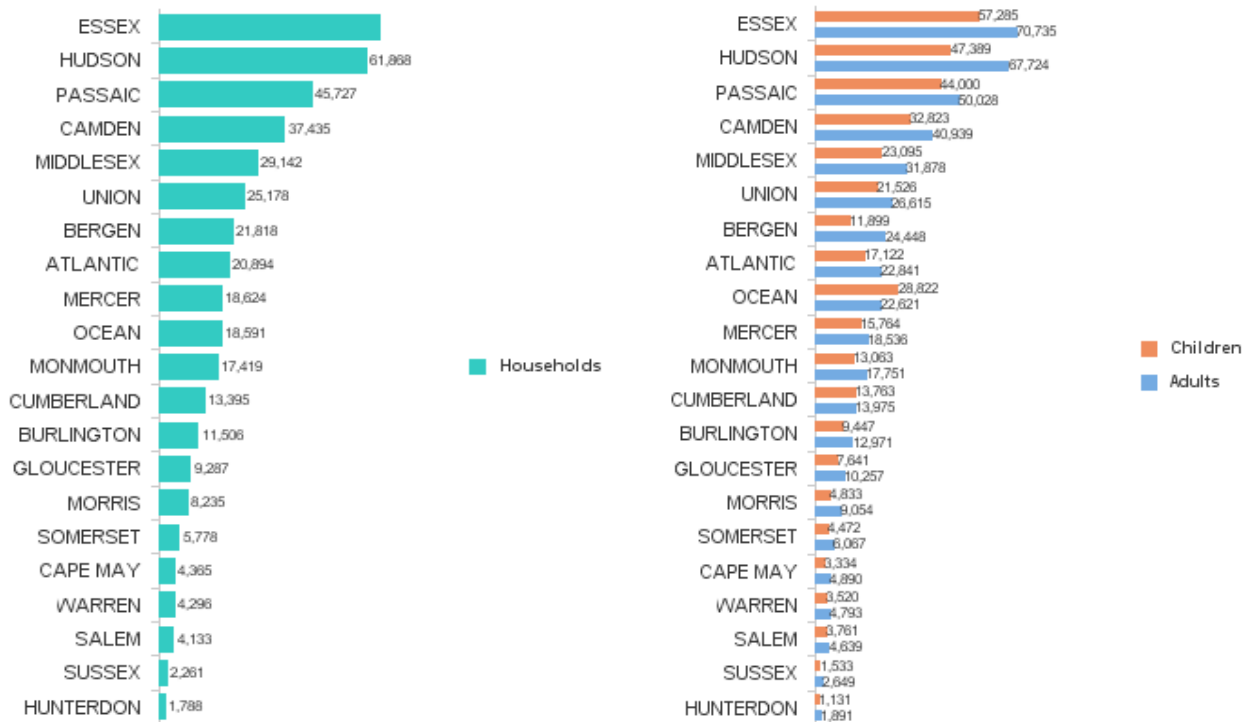
TABLE 7 :
NJ SNAP
NUMBER OF PARTICIPATING HOUSEHOLDS, PERSONS, ADULTS
AND CHILDREN BY COUNTY FOR MARCH 2021

County	HOUSEHOLDS				PERSONS			Age 60+	People with a disability	
	WFNJ/TANF	Other low income	TOTAL	% Chng (1 Yr)	Adults	Children	TOTAL			% Chng (1 Yr)
ATLANTIC	595	20,299	20,894	32.7%	22,841	17,122	39,963	30.2%	4,997	10,642
BERGEN	256	21,562	21,818	20.3%	24,448	11,899	36,347	24.9%	12,034	15,420
BURLINGTON	306	11,200	11,506	22.1%	12,971	9,447	22,418	22.9%	2,823	6,820
CAMDEN	1,217	36,218	37,435	28.1%	40,939	32,823	73,762	25.6%	7,883	19,318
CAPE MAY	79	4,286	4,365	21.8%	4,890	3,334	8,224	23.2%	997	2,319
CUMBERLAND	274	13,121	13,395	22.6%	13,975	13,763	27,738	21.1%	2,751	7,154
ESSEX	1,725	64,426	66,151	34.7%	70,735	57,285	128,020	31.7%	15,042	29,842
GLOUCESTER	211	9,076	9,287	14.1% *	10,257	7,641	17,898	11.8% *	2,191	5,939
HUDSON	1,366	60,502	61,868	48.8% Δ	67,724	47,389	115,113	44.9% Δ	18,771	28,622
HUNTERDON	44	1,744	1,788	15.3%	1,891	1,131	3,022	23.0%	555	1,040
MERCER	587	18,037	18,624	32.4%	18,536	15,764	34,300	31.7%	4,261	10,434
MIDDLESEX	518	28,624	29,142	22.4%	31,878	23,095	54,973	23.5%	12,115	17,023
MONMOUTH	166	17,253	17,419	21.9%	17,751	13,063	30,814	21.5%	5,482	9,846
MORRIS	81	8,154	8,235	18.1%	9,054	4,833	13,887	22.4%	4,049	5,257
OCEAN	310	18,281	18,591	19.0%	22,621	28,822	51,443	20.1%	5,132	10,271
PASSAIC	1,062	44,665	45,727	11.8% *	50,028	44,000	94,028	11.1% *	13,466	20,940
SALEM	104	4,029	4,133	14.5% *	4,639	3,761	8,400	13.7% *	839	2,340
SOMERSET	169	5,609	5,778	25.7%	6,067	4,472	10,539	28.6%	2,081	3,407
SUSSEX	30	2,231	2,261	15.5%	2,649	1,533	4,182	17.7%	716	1,607
UNION	404	24,774	25,178	35.5% Δ	26,615	21,526	48,141	33.2% Δ	7,430	12,292
WARREN	128	4,168	4,296	35.7% Δ	4,793	3,520	8,313	38.7% Δ	999	2,428
NJ TOTAL	9,632	418,259	427,891	27.7%	465,302	366,223	831,525	26.5%	124,614	222,961

Δ=higher caseload % change

*=lower caseload % change

Total NJ SNAP Recipients
MARCH 2021 by County



Data is derived from NJ MMIS Shared Data Warehouse.

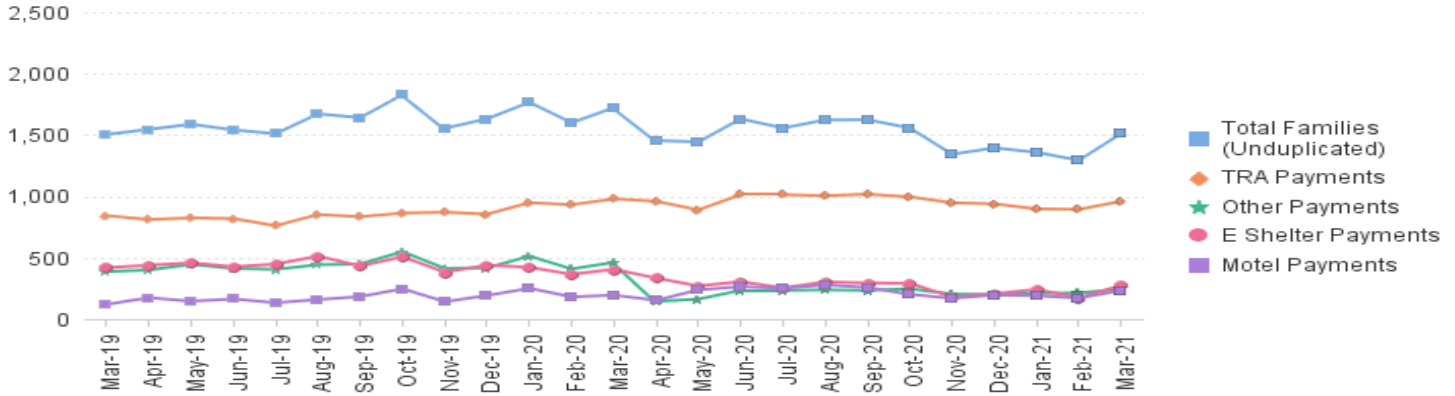
Effective July 2013 this data query source was converted to the SDW.

* Age 60+ and People with a disability columns are independent subsets of total persons. An individual might appear in both columns

TABLE 8 : EMERGENCY ASSISTANCE TOTAL NUMBER OF ELIGIBLE FAMILIES RECEIVING EMERGENCY ASSISTANCE PAYMENTS MARCH 2019 THROUGH MARCH 2021 - STATEWIDE (STATEWIDE)

		Total WFNJ/EA Families (Undupl)		Temp Rent Asst. Payments (Undupl)		Motel Housing Payments (Undupl)		Shelter/Transitional Housing Payments (Undupl)		Other WFNJ/EA Payments (Undupl)	
			% CHNG (1 YR)		% CHNG (1 YR)		% CHNG (1 YR)		% CHNG (1 YR)		% CHNG (1 YR)
2019	MAR	1,505	-15.7%	843	-12.9%	120	-24.1%	419	-17.8%	387	-15.3%
	APR	1,546	-13.9%	811	-16.6%	174	14.5%	439	-11.5%	400	-9.7%
	MAY	1,588	-9.4%	825	-10.2%	146	0.0%	458	-7.1%	446	1.1%
	JUN	1,541	-8.1%	819	-7.7%	164	36.7%	427	-9.7%	413	-0.5%
	JUL	1,511	-9.3%	761	-11.6%	133	-28.1%	448	-0.7%	405	-9.4%
	AUG	1,673	3.1%	852	-0.6%	159	14.4%	513	16.3%	443	0.0%
	SEP	1,641	6.8%	834	4.4%	183	-2.7%	433	20.3%	449	7.2%
	OCT	1,830	12.8%	864	6.1%	247	30.0%	508	17.6%	549	16.8%
	NOV	1,555	-3.7%	871	2.2%	142	-11.3%	382	-16.2%	413	-1.0%
	DEC	1,632	0.7%	855	6.2%	192	-14.3%	440	-0.9%	417	-1.9%
	2019 Average		1,578		827		164		427		438
	2020	JAN	1,767	15.7%	949	13.8%	251	59.9%	422	16.9%	513
FEB		1,600	15.1%	932	23.6%	181	20.7%	365	24.6%	409	-4.7%
MAR		1,723	14.5%	980	16.3%	195	62.5%	406	-3.1%	462	19.4%
APR		1,455	-5.9%	960	18.4%	153	-12.1%	334	-23.9%	144	-64.0%
MAY		1,444	-9.1%	890	7.9%	238	63.0%	270	-41.0%	163	-63.5%
JUN		1,632	5.9%	1,014	23.8%	265	61.6%	305	-28.6%	234	-43.3%
JUL		1,557	3.0%	1,014	33.2%	251	88.7%	254	-43.3%	234	-42.2%
AUG		1,623	-3.0%	1,005	18.0%	279	75.5%	303	-40.9%	238	-46.3%
SEP		1,624	-1.0%	1,018	22.1%	258	41.0%	294	-32.1%	234	-47.9%
OCT		1,558	-14.9%	996	15.3%	201	-18.6%	292	-42.5%	247	-55.0%
NOV		1,343	-13.6%	948	8.8%	170	19.7%	180	-52.9%	204	-50.6%
DEC		1,395	-14.5%	939	9.8%	196	2.1%	206	-53.2%	201	-51.8%
2020 Average		1,560		970		220		303		274	
2021	JAN	1,359	-23.1%	898	-5.4%	190	-24.3%	242	-42.7%	210	-59.1%
	FEB	1,294	-19.1%	894	-4.1%	172	-5.0%	174	-52.3%	213	-47.9%
	MAR	1,513	-12.2%	960	-2.0%	232	19.0%	275	-32.3%	244	-47.2%
2021 Average to date		1,389		917		198		230		222	

NJ STATEWIDE Families Receiving Emergency Assistance MARCH 2019 THROUGH MARCH 2021



WFNJ/EA data is derived from NJ MMIS Shared Data Warehouse. Effective July 2013 this data query source was converted to the SDW.

* Effective Feb '11 Transitional Housing Payments were removed from 'Other EA Payments' and added to 'Shelter Payments'.

TABLE 9 :
EMERGENCY ASSISTANCE (BY COUNTY) **TOTAL NUMBER OF ELIGIBLE FAMILIES RECEIVING EMERGENCY ASSISTANCE PAYMENTS BY COUNTY (UNDUPLICATED CASES) FOR MARCH 2021**

County	Total WFNJ/EA Families (Undupl)	% CHNG From MAR 20	Temp Rent Asst. Payments (Undupl)	Motel Housing Payments (Undupl)	Shelter/Transitional Housing Payments (Undupl)	Other WFNJ/EA Payments (Undupl)	SSI Receipts Receiving EA **
ATLANTIC	69	-37.3%	59	6	1	9	50
BERGEN	42	-40.8%	31	1	1	11	23
BURLINGTON	67	-32.3%	7	5	57	2	54
CAMDEN	70	-9.1%	16	30	21	8	49
CAPE MAY	20	53.8% Δ	8	10	0	4	10
CUMBERLAND	1	-75.0% *	0	0	1	0	0
ESSEX	119	-48.0%	44	0	73	9	5
GLOUCESTER	11	-68.6% *	6	1	3	2	5
HUDSON	196	-4.9%	157	19	15	39	95
HUNTERDON	7	-41.7%	7	0	0	1	14
MERCER	107	9.2%	67	22	12	26	62
MIDDLESEX	170	39.3%	101	53	7	37	37
MONMOUTH	20	100.0% Δ	0	0	19	2	34
MORRIS	17	-29.2%	12	5	0	1	12
OCEAN	114	16.3%	93	19	2	37	34
PASSAIC	258	-7.2%	224	9	19	23	18
SALEM	2	100.0% Δ	1	0	0	1	0
SOMERSET	77	18.5%	61	6	10	14	69
SUSSEX	1	-80.0% *	0	0	1	0	3
UNION	125	-12.6%	55	40	31	16	128
WARREN	20	-13.0%	11	6	2	2	7
NJ Total	1,513	-12.2%	960	232	275	244	709

Δ=higher caseload % change

*=lower caseload % change

** SSI-EA includes pay codes 22 and 24, data is derived from NJ Division of Family Development FAMIS Report #FM430-03A

WFNJ/EA data is derived from NJ MMIS Shared Data Warehouse.

Effective July 2013 this data query source was converted to the SDW.

Number WFNJ Families Receiving EA by County MARCH 2021

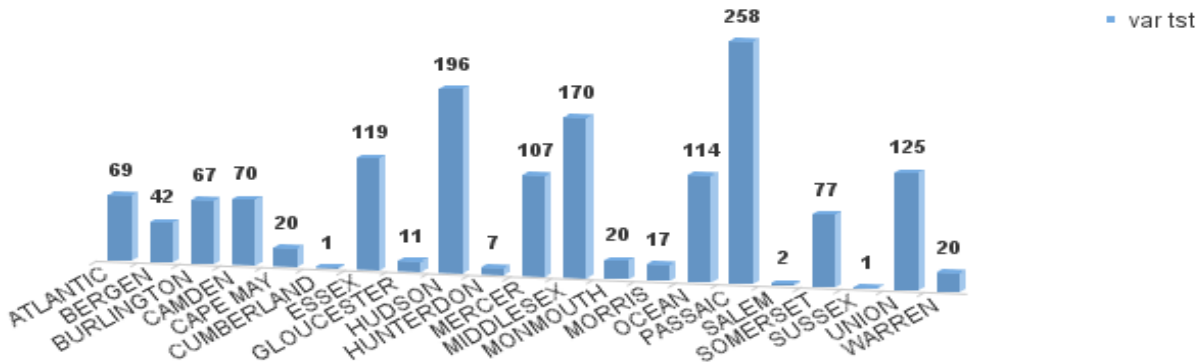


TABLE 10: GENERAL ASSISTANCE PROGRAM
NUMBER OF EMPLOYABLE AND UNEMPLOYABLE RECIPIENTS AND EMERGENCY ASSISTANCE PAYMENTS - STATEWIDE
MARCH 2019 THROUGH MARCH 2021

PROGRAM	Total Cases						Emergency Assistance Cases			
	Employable	% Chg (1 Yr)	Unemployable	% Chng (1 Yr)	Total	% Chng (1 Yr)	Temporary Rental Assistance	Other GA-EA	Total	% Chng (1 Yr)
2019										
MAR	4,215	-19.2%	6,273	-13.5%	10,488	-15.9%	904	1,077	1,981	-3.4%
APR	4,225	-19.0%	6,250	-12.9%	10,475	-15.5%	921	1,244	2,165	-2.3%
MAY	4,157	-17.9%	6,211	-12.9%	10,368	-15.0%	922	1,923	2,845	31.8%
JUN	4,047	-17.3%	6,147	-12.8%	10,194	-14.7%	920	1,166	2,086	3.5%
JUL	4,050	-15.1%	6,077	-13.0%	10,127	-13.8%	912	1,082	1,994	-1.1%
AUG	4,348	-12.4%	6,261	-13.4%	10,609	-13.0%	885	1,210	2,095	4.5%
SEP	4,228	-5.5%	6,193	-9.4%	10,421	-7.9%	884	1,275	2,159	10.3%
OCT	3,980	-11.1%	6,017	-11.8%	9,997	-11.5%	890	1,319	2,209	11.1%
NOV	3,900	-9.6%	5,988	-9.9%	9,888	-9.8%	878	1,198	2,076	8.1%
DEC	3,918	-4.7%	6,008	-8.3%	9,925	-6.9%	900	1,139	2,039	8.5%
2019 AVERAGE	4,124		6,182		10,306		898	1,223	2,121	
2020										
JAN	4,109	-2.5%	5,919	-8.3%	10,028	-6.0%	910	1,216	2,126	11.7%
FEB	4,206	0.1%	5,928	-6.0%	10,134	-3.6%	875	1,132	2,007	5.7%
MAR	4,868	15.5%	5,990	-4.5%	10,858	3.5%	919	1,077	1,996	0.8%
APR	5,587	32.2%	5,862	-6.2%	11,449	9.3%	913	855	1,768	-18.3%
MAY	6,936	66.9%	5,783	-6.9%	12,719	22.7%	929	909	1,838	-35.4%
JUN	7,585	87.4%	5,645	-8.2%	13,230	29.8%	916	1,255	2,171	4.1%
JUL	7,994	97.4%	5,520	-9.2%	13,514	33.4%	905	1,256	2,161	8.4%
AUG	8,119	86.7%	5,261	-16.0%	13,380	26.1%	875	1,188	2,063	-1.5%
SEP	8,176	93.4%	5,127	-17.2%	13,303	27.7%	849	1,333	2,182	1.1%
OCT	8,156	104.9%	4,988	-17.1%	13,144	31.5%	855	1,107	1,962	-11.2%
NOV	8,228	111.0%	4,822	-19.5%	13,050	32.0%	835	884	1,719	-17.2%
DEC	8,540	118.0%	4,691	-21.9%	13,231	33.3%	833	1,111	1,944	-4.7%
2020 AVERAGE	6,875		5,461		12,337		885	1,110	1,995	
2021										
JAN	8,978	118.5%	4,553	-23.1%	13,531	34.9%	848	1,240	2,088	-1.8%
FEB	9,089	116.1%	4,407	-25.7%	13,496	33.2%	809	991	1,800	-10.3%
MAR	9,630	97.8%	4,421	-26.2%	14,051	29.4%	819	1,405	2,224	11.4%
2021 AVERAGE TO DATE	9,232		4,460		13,693		825	1,212	2,037	

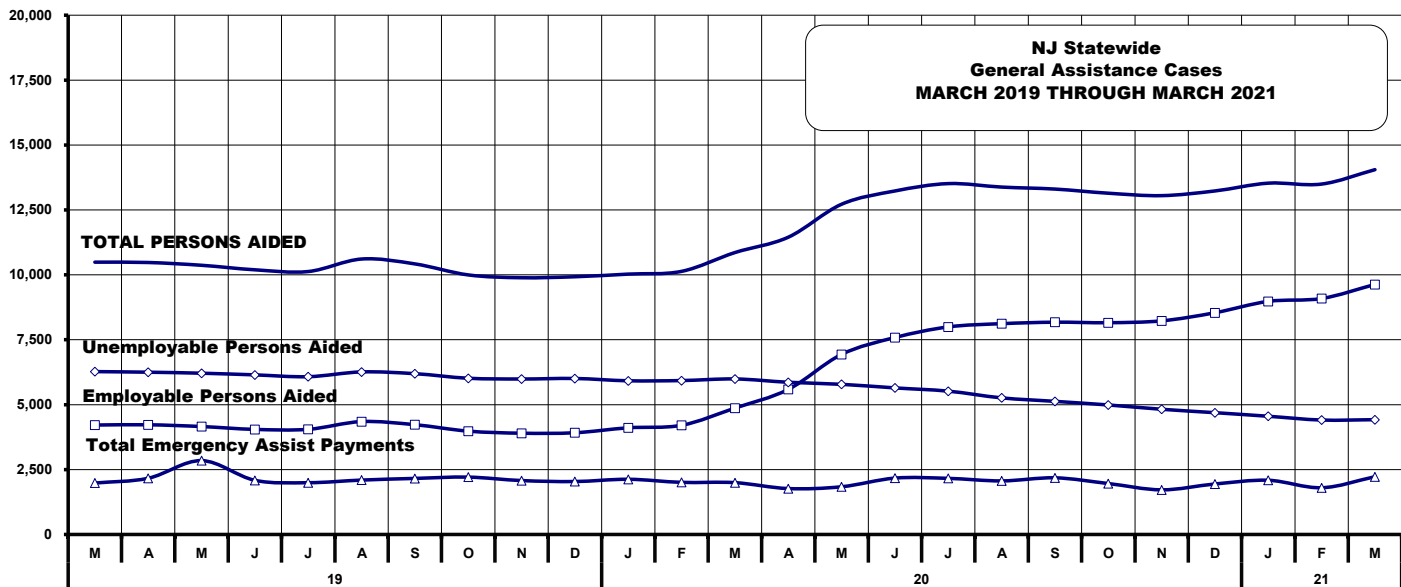


TABLE 11: EMPLOYABLE AND UNEMPLOYABLE CASES AND EMERGENCY ASSISTANCE CASES RECEIVING PAYMENTS BY COUNTY MARCH 2021

PROGRAM	Total Cases						Emergency Assistance Cases				
	Employable	% Chng (1 Yr)	Unemployable	% Chng (1 Yr)	Total	% Chng (1 Yr)	Temporary Rental Assistance	Other GA-EA	Total	% Chng (1 Yr)	
ATLANTIC	878	96.0%	218	-19.6%	1,096	52.4%	Δ	74	43	117	-13.3%
BERGEN	343	53.8%	214	-37.2%	557	-1.2%		85	41	126	8.6%
BURLINGTON	378	67.3%	228	-35.0%	606	5.0%		19	119	138	10.4%
CAMDEN	1,244	132.5%	525	-22.3%	1,769	46.1%		45	151	196	70.4%
CAPE MAY	125	13.6%	55	-21.4%	180	0.0%		23	41	64	88.2% Δ
CUMBERLAND	335	70.1%	110	-45.5%	445	11.5%		0	5	5	-70.6% *
ESSEX	1,009	21.3%	388	-33.2%	1,397	-1.1%		30	91	121	-39.5%
GLOUCESTER	175	0.0%	149	-32.6%	324	-18.2%	*	5	32	37	-54.3% *
HUDSON	1,953	345.9%	560	-10.0%	2,513	137.1%	Δ	81	167	248	188.4% Δ
HUNTERDON	70	0.0%	59	-30.6%	129	-16.8%	*	13	16	29	-27.5%
MERCER	392	149.7%	304	-23.2%	696	25.9%		51	49	100	17.6%
MIDDLESEX	531	181.0%	295	-23.6%	826	43.7%		84	139	223	36.0%
MONMOUTH	254	111.7%	172	-17.3%	426	29.9%		0	94	94	95.8% Δ
MORRIS	137	31.7%	144	-19.6%	281	-0.7%		50	24	74	-22.1%
OCEAN	342	40.2%	240	-18.6%	582	8.0%		76	92	168	2.4%
PASSAIC	441	167.3%	358	-29.8%	799	18.4%		51	31	82	-24.8%
SALEM	147	234.1%	57	-30.5%	204	61.9%	Δ	0	2	2	-50.0% *
SOMERSET	146	35.2%	62	-34.0%	208	3.0%		46	35	81	-12.0%
SUSSEX	66	-14.3%	35	-23.9%	101	-17.9%	*	1	19	20	5.3%
UNION	505	73.5%	163	-37.5%	668	21.0%		62	176	238	18.4%
WARREN	159	38.3%	85	-24.8%	244	7.0%		23	38	61	-7.6%
NJ TOTAL	9,630	97.8%	4,421	-26.2%	14,051	29.4%		819	1,405	2,224	11.4%

Δ = ↑ Caseload %

* = ↓ Caseload %

Source: NJ Division of Family Development, GA Fiscal Unit

**TABLE 12:
OFFICE OF
CHILD SUPPORT
SERVICES**

**OFFICE OF CHILD SUPPORT SERVICES
QUARTERLY PERFORMANCE REPORT
STATE SUMMARY
TITLE IV-D SOURCE COLLECTION REPORT**

Comparison of Quarter-2 (FFY 20 vs. FFY 21)

COLLECTION SOURCE	TOTAL 1/1/2020 - 3/31/2020	% OF TOTAL COLLECTIONS	TOTAL 1/1/2021 - 3/31/2021	% OF TOTAL COLLECTIONS	DOLLAR CHANGE	% CHANGE
FEDERAL TAX	\$18,713,574	6.07%	\$11,587,000	3.94%	\$ (7,126,574)	-38.08%
STATE TAX	\$277,654	0.09%	\$433,038	0.15%	\$ 155,384	55.96%
UIB	\$9,053,362	2.94%	\$34,833,880	11.86%	\$ 25,780,518	284.76%
INC WITHHOLD	\$206,751,521	67.05%	\$183,805,582	62.57%	\$ (22,945,939)	-11.10%
FROM OTHER STATES	\$11,896,305	3.86%	\$12,170,952	4.14%	\$ 274,647	2.31%
ADMIN ENFORCEMENT	\$3,707,465	1.20%	\$1,746,080	0.01	\$ (1,961,386)	-52.90%
OTHER	\$57,949,892	18.79%	\$49,160,906	16.74%	\$ (8,788,986)	-15.17%
TOTAL COLLECTIONS*	\$308,349,773	100%	\$293,737,438	100%	\$ (14,612,336)	-4.74%
DISBURSED COLLECTIONS**	\$269,789,988		\$260,626,114		\$ (9,163,874)	-3.40%

* Includes collections on both current support and arrears.

** Includes collections on both current support and arrears; also includes money sent to other states.

SOURCE: NJKIDS (Based on Federal Quarterly Report of Collections - OCSE-34A except Disbursed Collections)

Disbursed Collections obtained from Federal Data Report - OCSE-157, which is reported annually to Congress and used in the calculation of incentive dollars earned by each state.

TABLE 13

OFFICE OF CHILD SUPPORT SERVICES

OFFICE OF CHILD SUPPORT SERVICES

State Summary

TITLE IV-D PATERNITY ESTABLISHMENT REPORT

Comparison of March (FFY 20 vs. FFY 21)

County	March 2020			March 2021			Increase or Decrease (-) from FFY 2020 to FFY 2021
	Total Children Born Out of Wedlock*	Number of Paternities Established	Percent of Paternities Established	Total Children Born Out of Wedlock*	Number of Paternities Established	Percent of Paternities Established	
Atlantic	6,358	6,302	99.1%	5,856	5,811	99.2%	0.1%
Bergen	3,240	3,177	98.1%	2,938	2,894	98.5%	0.4%
Burlington	5,018	4,908	97.8%	4,518	4,410	97.6%	-0.2%
Camden	15,860	15,336	96.7%	14,637	14,235	97.3%	0.6%
Cape May	1,270	1,254	98.7%	1,146	1,126	98.3%	-0.5%
Cumberland	6,647	6,589	99.1%	6,170	6,104	98.9%	-0.2%
Essex	25,614	24,244	94.7%	22,660	21,577	95.2%	0.6%
Gloucester	4,450	4,449	100.0%	4,024	3,973	98.7%	-1.2%
Hudson	10,215	9,760	95.5%	9,192	8,872	96.5%	1.0%
Hunterdon	274	271	98.9%	227	227	100.0%	1.1%
Mercer	7,200	7,017	97.5%	6,396	6,212	97.1%	-0.3%
Middlesex	6,529	6,334	97.0%	5,857	5,713	97.5%	0.5%
Monmouth	5,244	5,186	98.9%	4,581	4,442	97.0%	-1.9%
Morris	1,301	1,292	99.3%	1,147	1,138	99.2%	-0.1%
Ocean	4,883	4,754	97.4%	4,473	4,360	97.5%	0.1%
Passaic	10,667	10,157	95.2%	9,275	8,949	96.5%	1.3%
Salem	2,731	2,631	96.3%	2,508	2,420	96.5%	0.2%
Somerset	1,452	1,398	96.3%	1,272	1,233	96.9%	0.7%
Sussex	546	537	98.4%	464	459	98.9%	0.6%
Union	10,294	9,821	95.4%	9,402	8,996	95.7%	0.3%
Warren	942	943	100.1%	834	834	100.0%	-0.1%
NJ TOTALS	130,735	126,360	96.7%	117,577	113,985	96.9%	0.3%

SOURCE: NJKIDS (Based on Federal Performance Measures - OCSE-157)

* Information on Out of Wedlock Births obtained from NJ Bureau of Vital Statistics

**TABLE 14:
OFFICE OF
CHILD SUPPORT
SERVICES**

**OFFICE OF CHILD SUPPORT SERVICES
STATE SUMMARY
TITLE IV-D REPORT OF CASES WITH ORDERS
Comparison of March (FFY 20 vs. FFY 21)**

County	MARCH 2020			MARCH 2021			Increase or Decrease (-) from FFY 2020 to FFY 2021
	Total Cases	Cases with Orders	% of Cases with Orders	Total Cases	Cases with Orders	% of Cases with Orders	
Atlantic	11,687	10,618	90.9%	10,741	9,938	92.5%	1.7%
Bergen	11,710	11,328	96.7%	10,862	10,629	97.9%	1.1%
Burlington	13,001	12,016	92.4%	11,803	11,171	94.6%	2.2%
Camden	28,083	26,070	92.8%	26,196	24,815	94.7%	1.9%
Cape May	3,043	2,784	91.5%	2,763	2,583	93.5%	2.0%
Cumberland	11,801	11,233	95.2%	10,966	10,575	96.4%	1.2%
Essex	42,006	35,060	83.5%	37,063	32,488	87.7%	4.2%
Gloucester	10,269	9,858	96.0%	9,454	9,156	96.8%	0.9%
Hudson	20,219	17,652	87.3%	18,271	16,426	89.9%	2.6%
Hunterdon	1,423	1,335	93.8%	1,296	1,220	94.1%	0.3%
Mercer	13,591	12,176	89.6%	12,159	11,204	92.1%	2.6%
Middlesex	17,144	16,089	93.8%	15,691	14,841	94.6%	0.7%
Monmouth	13,566	12,907	95.1%	12,219	11,719	95.9%	0.8%
Morris	5,735	5,589	97.5%	5,271	5,154	97.8%	0.3%
Ocean	14,480	13,821	95.4%	13,282	12,843	96.7%	1.2%
Passaic	20,702	16,747	80.9%	17,708	15,555	87.8%	6.9%
Salem	4,222	4,024	95.3%	3,848	3,698	96.1%	0.8%
Somerset	4,582	4,316	94.2%	4,132	3,928	95.1%	0.9%
Sussex	2,599	2,533	97.5%	2,364	2,322	98.2%	0.8%
Union	17,956	16,951	94.4%	16,588	15,880	95.7%	1.3%
Warren	2,977	2,772	93.1%	2,652	2,549	96.1%	3.0%
NJ TOTALS	270,796	245,879	90.8%	245,329	228,694	93.2%	2.4%

SOURCE: NJKiDS (Based on Federal Performance Measures - OCSE-157)

**TABLE 15:
OFFICE OF
CHILD SUPPORT
SERVICES**

**OFFICE OF CHILD SUPPORT SERVICES
STATE SUMMARY
TITLE IV-D COLLECTIONS ON CURRENT SUPPORT**

Comparison of March (FFY 20 vs. FFY 21)

County	MARCH 2020			MARCH 2021			Increase or Decrease (-) from FFY 2020 to FFY 2021
	Total Current Support Due	Total Current Support Distributed	Total Collection Rate	Total Current Support Due	Total Current Support Distributed	Total Collection Rate	
Atlantic	\$3,691,990	\$2,469,851	66.9%	\$3,671,219	\$2,583,105	70.4%	3.5%
Bergen	\$8,425,866	\$6,453,079	76.6%	\$8,092,618	\$6,319,774	78.1%	1.5%
Burlington	\$5,729,117	\$3,938,671	68.7%	\$5,438,212	\$3,995,057	73.5%	4.7%
Camden	\$7,807,141	\$4,769,768	61.1%	\$7,730,668	\$5,000,601	64.7%	3.6%
Cape May	\$1,057,685	\$736,866	69.7%	\$1,024,483	\$737,335	72.0%	2.3%
Cumberland	\$3,010,688	\$1,818,431	60.4%	\$2,969,416	\$1,878,168	63.3%	2.9%
Essex	\$10,605,624	\$6,372,820	60.1%	\$10,440,477	\$6,655,628	63.7%	3.7%
Gloucester	\$4,098,470	\$2,782,413	67.9%	\$4,044,162	\$2,871,703	71.0%	3.1%
Hudson	\$7,139,846	\$4,806,173	67.3%	\$7,131,960	\$5,034,783	70.6%	3.3%
Hunterdon	\$1,226,043	\$996,191	81.3%	\$1,146,158	\$948,840	82.8%	1.5%
Mercer	\$4,082,903	\$2,569,539	62.9%	\$3,918,203	\$2,644,546	67.5%	4.6%
Middlesex	\$7,676,611	\$5,346,514	69.6%	\$7,410,166	\$5,405,749	73.0%	3.3%
Monmouth	\$7,251,614	\$5,327,582	73.5%	\$6,872,314	\$5,223,321	76.0%	2.5%
Morris	\$4,411,031	\$3,315,354	75.2%	\$4,209,471	\$3,177,979	75.5%	0.3%
Ocean	\$6,471,891	\$4,725,837	73.0%	\$6,308,653	\$4,742,056	75.2%	2.1%
Passaic	\$6,408,661	\$4,161,183	64.9%	\$6,356,192	\$4,340,011	68.3%	3.3%
Salem	\$1,094,964	\$687,764	62.8%	\$1,047,589	\$677,633	64.7%	1.9%
Somerset	\$3,011,174	\$2,428,841	80.7%	\$2,900,185	\$2,453,204	84.6%	3.9%
Sussex	\$1,750,677	\$1,394,906	79.7%	\$1,726,197	\$1,370,240	79.4%	-0.3%
Union	\$6,786,950	\$4,706,030	69.3%	\$6,708,943	\$4,870,529	72.6%	3.3%
Warren	\$1,304,043	\$958,044	73.5%	\$1,232,193	\$920,024	74.7%	1.2%
NJ TOTALS	\$103,042,989	\$70,765,854	68.7%	\$100,379,479	\$71,850,284	71.6%	2.9%

SOURCE: NJKiDS (Based on Federal Performance Measures - OCSE-157)

**TABLE 16:
OFFICE OF
CHILD SUPPORT
SERVICES**

**OFFICE OF CHILD SUPPORT SERVICES
STATE SUMMARY
TITLE IV-D CASES ARREARS COLLECTION REPORT**

Comparison of March (FFY 20 vs. FFY 21)

County	MARCH 2020			MARCH 2021			Increase or Decrease (-) from FFY 2020 to FFY 2021
	Total Cases with Arrears	Total Amount Collected	Average Arrears Collection per Case	Total Cases with Arrears	Total Amount Collected	Average Arrears Collection per Case	
Atlantic	7,200	\$1,279,641	\$177.73	6,682	\$1,245,877	\$186.45	\$8.72
Bergen	7,460	\$1,453,972	\$194.90	6,943	\$1,662,351	\$239.43	\$44.53
Burlington	8,080	\$1,464,248	\$181.22	7,473	\$1,537,015	\$205.68	\$24.46
Camden	16,461	\$2,735,628	\$166.19	15,779	\$2,630,437	\$166.70	\$0.52
Cape May	1,968	\$358,726	\$182.28	1,796	\$287,402	\$160.02	-\$22.26
Cumberland	7,398	\$1,137,330	\$153.73	6,882	\$1,230,910	\$178.86	\$25.12
Essex	22,504	\$3,933,737	\$174.80	20,607	\$4,023,634	\$195.26	\$20.45
Gloucester	6,821	\$1,289,579	\$189.06	6,322	\$1,271,882	\$201.18	\$12.12
Hudson	12,291	\$2,064,050	\$167.93	11,145	\$2,041,272	\$183.16	\$15.22
Hunterdon	817	\$147,264	\$180.25	758	\$172,004	\$226.92	\$46.67
Mercer	8,390	\$1,507,189	\$179.64	7,679	\$1,534,408	\$199.82	\$20.18
Middlesex	10,770	\$2,014,444	\$187.04	9,889	\$1,909,570	\$193.10	\$6.06
Monmouth	8,637	\$1,484,885	\$171.92	7,757	\$1,666,523	\$214.84	\$42.92
Morris	3,796	\$799,655	\$210.66	3,488	\$756,429	\$216.87	\$6.21
Ocean	9,061	\$1,595,518	\$176.09	8,287	\$1,752,214	\$211.44	\$35.35
Passaic	11,431	\$2,159,685	\$188.93	10,711	\$2,240,148	\$209.14	\$20.21
Salem	2,572	\$325,736	\$126.65	2,321	\$395,096	\$170.23	\$43.58
Somerset	2,978	\$557,405	\$187.17	2,596	\$716,742	\$276.09	\$88.92
Sussex	1,712	\$362,733	\$211.88	1,556	\$317,504	\$204.05	-\$7.83
Union	11,371	\$2,132,886	\$187.57	10,510	\$2,181,432	\$207.56	\$19.99
Warren	1,762	\$300,431	\$170.51	1,631	\$342,451	\$209.96	\$39.46
NJ TOTALS	163,480	\$29,104,742	\$178.03	150,812	\$29,915,301	\$198.36	\$20.33

SOURCE: OCSE-157 Child Support Enforcement Annual Data Report

Table 17
WFNJ**WORK FIRST NEW JERSEY STATISTICAL SUMMARY****MARCH 2021**

COUNTY	EMPLOYMENT DIRECTED ACTIVITIES			EMPLOYED OPEN (WFNJ RECIPIENT)	SUPPORT SERVICES ON ACTIVE CASE		CLOSED FOR EMPLOYMENT THIS MONTH	POST ASSISTANCE CHILD CARE
	CWEP	ALL OTHER TRAINING	JOB SEARCH		CHILD CARE	TRAINING REL. EXPENSES		
ATLANTIC	0	17	0	20	3	28	0	14
BERGEN	1	2	0	3	13	0	1	8
BURLINGTON	0	5	0	3	5	2	0	18
CAMDEN	31	133	0	19	27	0	6	18
CAPE MAY	0	1	0	3	1	1	0	5
CUMBERLAND	0	30	0	4	1	1	0	2
ESSEX	23	142	1	34	26	31	3	58
GLOUCESTER	0	10	0	5	1	1	2	10
HUDSON	7	66	0	24	32	1	9	25
HUNTERDON	0	0	0	1	1	0	0	0
MERCER	31	49	8	26	28	17	6	31
MIDDLESEX	0	24	5	16	5	0	1	35
MONMOUTH	0	15	0	9	16	0	0	19
MORRIS	0	6	0	2	3	0	0	4
OCEAN	1	15	1	9	9	2	0	15
PASSAIC	0	40	0	18	25	4	4	6
SALEM	0	4	0	2	2	0	0	0
SOMERSET	0	3	1	8	12	1	0	12
SUSSEX	0	2	0	1	1	0	0	1
UNION	0	33	0	6	9	0	1	7
WARREN	0	13	0	4	2	0	1	2
STATE	94	610	16	217	222	89	34	290

**DIVISION OF FAMILY DEVELOPMENT CURRENT PROGRAM STATISTICS
MARCH 2021**

ACRONYMS

EMERGENCY ASSISTANCE (EA) - Payments to those eligible for WFNJ/TANF or WFNJ/GA, authorized during the 30 consecutive days immediately following the emergency (defined as a substantial loss of shelter, food, clothing, or household furnishings by fire, flood or other similar disaster) or if eligible individual or family is in an imminent or actual state of homelessness.

NJ SNAP - Formerly the Food Stamp Program, now known as NJ SNAP (NJ Supplemental Nutrition Assistance Program) authorized by Congress as a nutritional supplement program to provide low income households with more food of greater variety and better nutrition. Program eligibility is based on household income, resources, and expenses for medical, shelter, and dependent care. CWA staff refers certain recipients to the New Jersey Department of Labor for participation in the Food Stamp Employment

FAMIS: Family Assistance Management Information System

GAAS: General Assistance Automated System

NJKiDS: New Jersey Kids Deserve Support (Child Support Information Management System)

NJ MMIS SHARED DATA WAREHOUSE: The Shared Data Warehouse (SDW) is the repository for New Jersey's DFD and Medicaid data. Since 2003, OptumInsight has administered the SDW and provided access to the data through a reporting tool known as Business Objects.

OMEGA: Online Management of Economic Goal Achievement

SSI-EA: Supplemental Security Income-Emergency Assistance

WFNJ: Work First New Jersey - Fully implemented July 1, 1997, this is New Jersey's welfare reform program which responds to the requirements of the Federal Personal Responsibility and Work Opportunity Reconciliation Act (**PRWORA**) of 1996. PRWORA established Temporary Assistance for Needy Families (**TANF**) as the replacement for AFDC cash assistance. WFNJ includes two segments, **WFNJ/TANF** for families with children, and **WFNJ/GA** (General Assistance) for single adults and couples without dependent children. WFNJ emphasizes achieving self-sufficiency and limits lifetime

**DIVISION OF FAMILY DEVELOPMENT CURRENT PROGRAM STATISTICS
MARCH 2021**

EXPLANATORY NOTES

The Department of Human Services Division of Family Development provides basic income and an opportunity to achieve self-sufficiency for individuals and families served by the Division's programs. The Division provides leadership, direction and supervision to those public agencies responsible for administering those programs and plans for and develops policies to promote self-sufficiency.

WFNJ STATISTICAL SUMMARY (TABLE 17)

Employment Directed Activities (EDA) - From Activities Summary Report (OMEGA report # RM064). Unduplicated count of persons participating in Community Work Experience Program (CWEP), All Other Training, or Job Search.

Number of Persons Employed This Month, Still Receiving TANF - Individuals with open "empl" activity on OMEGA. Ad hoc report.

Participants Receiving Child Care Services - From Issuance Disbursement Summary (OMEGA report # RM703). Total number of active participants who show receipt of Child Care.

Number of Persons Closed on FAMIS Due to Employment - From FAMIS report #5549-RM-2

Post TANF and Receiving Child Care - Persons no longer in receipt of TANF but still receiving child care. From Share Data Warehouse Child Care case count based on Child Care payments (SDW report WR00022WZ_CC).