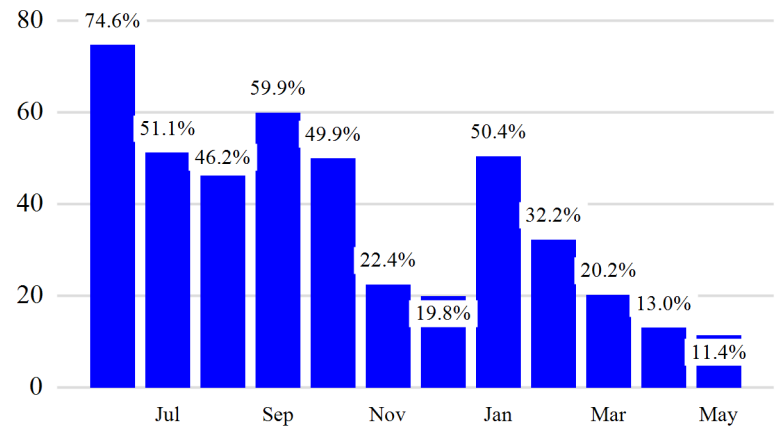


## Revenue Passengers

	<u>Curr Month</u>	<u>% Change</u>
	12,955,846	11.4% ▲
Domestic	8,693,405	6.3%
International	4,262,441	23.5%
Non-Revenue	339,791	11.9%
<u>Load Factors</u>		
	<u>Curr Month</u>	
Domestic	85.3%	84.6% Avg Load Factor
International	83.4%	

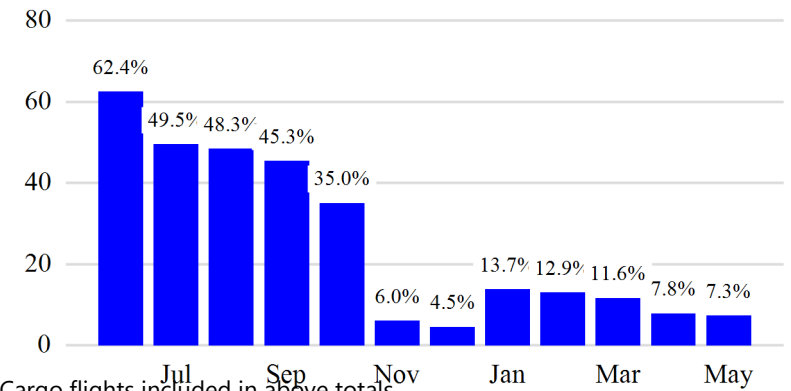
Year over Year % Change in Revenue Passengers - 12 Months



## Total Flights

	<u>Curr Month</u>	<u>% Change</u>
	118,320	8.7% ▲
<b>Excl GA</b>	109,880	7.3% ▲
Domestic	83,291	4.7%
International	26,589	16.4%
Gen Aviation	8,440	32.4%
Cargo Flights*	3,348	-2.1%

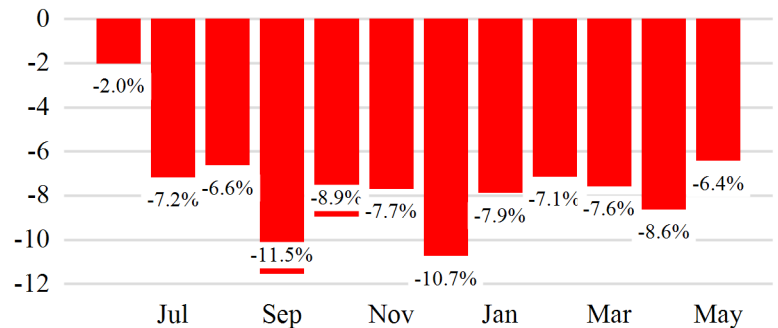
Year over Year % Change in Total Flights (Excl GA) - 12 Months



## Cargo (Short Tons)

	<u>Curr Month</u>	<u>% Change</u>
	186,016	-6.4% ▼
Domestic	81,438	-0.5%
International	104,578	-10.5%
Mail	11,534	-14.0%

Year over Year % Change in Cargo - 12 Months



### Top 5 Declines in Revenue Passengers by Airline

Airline	Pax Decline	% Decline
AMERICAN	(70,797)	-4.0%
QATAR AIRWAYS	(17,067)	-36.0%
TURKISH AIR	(5,410)	-8.0%
FINNAIR	(4,328)	-23.0%
WESTJET	(4,158)	-21.0%

### Top 5 Increases in Revenue Passengers by Airline

Airline	Pax Increase	% Increase
DELTA	533,009	21.0%
UNITED	242,723	8.0%
JETBLUE AIRWAYS	71,148	4.0%
AIR CANADA	68,751	64.0%
BRITISH AIRWAYS	53,052	52.0%

## Airport Summary Statistics

### JFK Summary

	Current Month	YoY %
Total Revenue Pax	5,510,044	13.0
Total Flights Including GA	42,266	10.0
Total Cargo (Short Tons)	126,080	-6.1

### EWR Summary

	Current Month	YoY %
Total Revenue Pax	4,433,648	9.0
Total Flights Including GA	38,638	1.0
Total Cargo (Short Tons)	57,304	-7.8

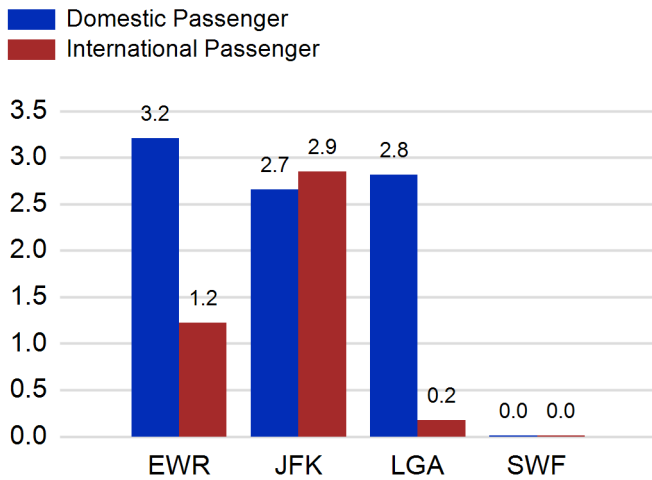
### LGA Summary

	Current Month	YoY %
Total Revenue Pax	2,992,798	11.0
Total Flights Including GA	32,793	8.0
Total Cargo (Short Tons)	605	1.1

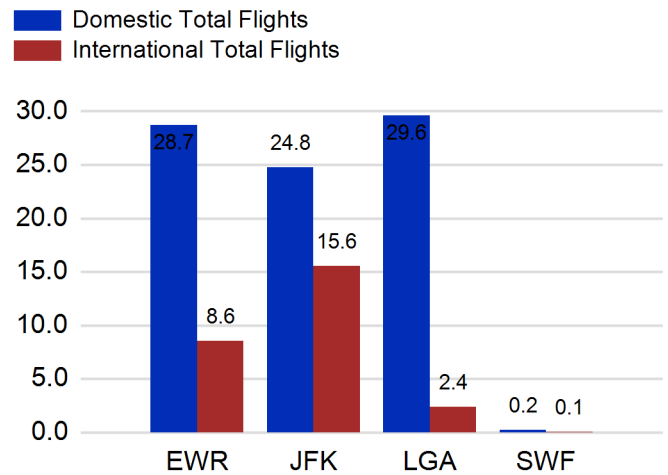
### SWF Summary

	Current Month	YoY %
Total Revenue Pax	19,356	-5.0
Total Flights Including GA	4,623	112.0
Total Cargo (Short Tons)	2,027	15.4

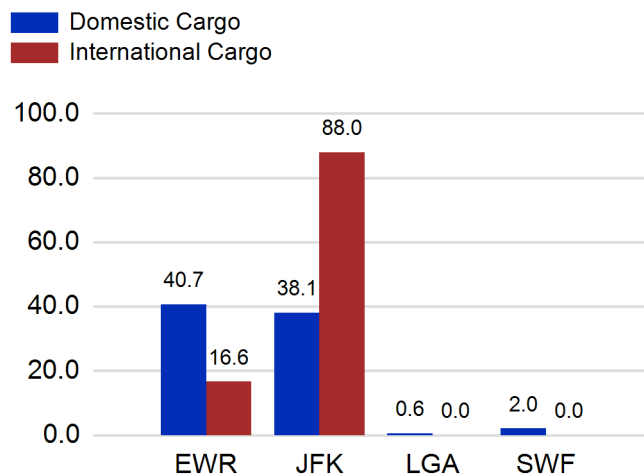
### Total Passengers by Airport (Millions)



### Total Flights by Airport (Thousands)



### Total Cargo by Airport (Thousands of Short Tons)



### 12 Months Ending Passenger & Freight Statistics

#### Top 20 Airlines Ranking by Passengers & Freight: 12 Months Ending May 2023

Airline Name	Domestic	International	Total Pax	% of Tot	Airline Name	Short Tons	% of Tot
United	26,321,647	7,650,765	33,972,412	24.50%	FEDERAL EXPRESS	384,156	17.11%
DELTA	25,562,028	5,802,093	31,364,121	22.61%	UNITED PARCEL	199,577	8.89%
JETBLUE AIRWAYS	16,470,280	6,263,948	22,734,228	16.39%	United	184,637	8.22%
AMERICAN	14,361,525	3,632,656	17,994,181	12.97%	DELTA	96,941	4.32%
SPIRIT AIRLINES	4,416,621	0	4,416,621	3.18%	AMERICAN	90,958	4.05%
SOUTHWEST AIRLINES	3,083,558	0	3,083,558	2.22%	KALITTA AIR LLC	80,579	3.59%
ALASKA AIRLINES	2,428,170	0	2,428,170	1.75%	AIR TRANSPORT INT'L.(BAX Inc.)	63,397	2.82%
AIR CANADA	0	1,495,304	1,495,304	1.08%	ABX AIR INC	62,316	2.77%
BRITISH AIRWAYS	0	1,466,392	1,466,392	1.06%	ATLAS AIR	61,786	2.75%
AIR FRANCE	313	1,189,989	1,190,302	0.86%	KOREAN	52,121	2.32%
EMIRATES AIRLINES	0	1,074,733	1,074,733	0.77%	CARGOLUX AIRLINES	49,489	2.20%
VIRGIN ATLANTIC	0	902,754	902,754	0.65%	BRITISH AIRWAYS	47,488	2.11%
LUFTHANSA CARGO	0	821,451	821,451	0.59%	CHINA AIRLINES (CAL)	44,815	2.00%
TURKISH AIR	0	734,722	734,722	0.53%	CATHAY PACIFIC	44,434	1.98%
AER LINGUS	0	725,832	725,832	0.52%	VIRGIN ATLANTIC	36,375	1.62%
Avianca Costa Rica	0	702,248	702,248	0.51%	TURKISH AIR	34,511	1.54%
EL AL	0	570,378	570,378	0.41%	LUFTHANSA CARGO	33,925	1.51%
LAN AIRLINES	0	522,390	522,390	0.38%	EVA	32,652	1.45%
IBERIA	0	508,098	508,098	0.37%	AIR FRANCE	31,149	1.39%
SWISS INT'L AIR LINES LTD	0	482,299	482,299	0.35%	ASIANA	28,483	1.27%

#### Passengers & Freight by Market - 12 Months Ending

Market	Passengers	Freight (Short Tons)
TRANSATLANTIC	24,732,913	864,405
CANADA	3,711,404	4,885
CARIBBEAN + BERMUDA	8,006,363	12,967
CENTRAL AND SOUTH AMERICA	4,039,486	60,131
DOMESTIC	91,344,635	948,671
MEXICO	2,423,293	13,588
TRANSPACIFIC	2,029,147	332,845
PUERTO RICO	2,400,669	8,309

## Additional Data

### Airline Schedules (ADI): Non-Stop Destinations

	Region	Flights (Daily)	Cities
Domestic	Domestic	2553.4	107
	Puerto Rico	38.9	3
	<b>Total</b>	<b>2,592.3</b>	<b>110.00</b>
International	Canada	192.5	8
	Caribbean & Bermuda	145.5	23
	Central & South America	63.5	14
	Mexico	41.2	6
	Transatlantic	362.1	63
	Transpacific	31.6	10
	<b>Total</b>	<b>836.4</b>	<b>124.00</b>
	<b>Total</b>	<b>3,428.7</b>	<b>234.00</b>

### Airline Schedules (ADI): Carriers & Aircraft Type

	Aircraft Type	Flights (Daily)	Carriers
Domestic	Commuter	981.0	4
	Narrow Body	1558.3	10
	Wide Body	53.0	4
<b>Total</b>	<b>Total</b>	<b>2,592.3</b>	<b>18.00</b>
International	Commuter	166.3	5
	Narrow Body	298.1	22
	Wide Body	372.0	58
	<b>Total</b>	<b>836.4</b>	<b>85.00</b>
<b>Total</b>	<b>Total</b>	<b>3,428.7</b>	<b>103.00</b>

### Passenger Demographics (ACI ASQ Surveys - 2021)

Connect		Trip Type		Gender	
Local Origin/Destination	78.6%	Business	14.0%	M	49.6%
Connecting	21.4%	Leisure	86.0%	F	50.4%
Transport Mode		Annual Flights		Residency	
Bus/Shuttle	4.7%	1-2	61.5%	United States	81.0%
Other	18.7%	3-5	24.9%	Other	19.0%
Private/Company Car	37.5%	6-10	9.0%		
Rail/Subway	7.3%	11-20	2.8%		
Rental Car	4.6%	21+	1.8%		
Taxi/Limo	27.2%				

### Ground Transportation

	Curr Month	% Change		Curr Month	% Change
<i>Paid Parked Cars</i>	342,263	-19.7	<i>Total Air Train Passengers</i>	2,626,524	8.0
<i>GTC Bookings</i>	0		<i>Paid Howard Beach Passengers</i>	147,413	-6.0
<i>Airport Coach Passengers</i>	34,697	14.6	<i>Paid Jamaica Passengers</i>	507,088	-20.5
<i>Taxis Dispatched</i>	386,060	-0.1	<i>Paid EWR Passengers</i>	239,148	16.9
			<i>On-Airport (Unpaid) Passengers</i>	1,732,875	20.9

### Airlines for American Carriers (USA)

	Curr Month	% Change
<i>Freight:revenue ton miles (000)</i>	0	

### Regional Airports: Other

	Curr Month	% Change
<i>TEB flight movements</i>	16,687	0.5
<i>ISP Total passengers</i>	108,574	-8.2
<i>HPN Total passengers</i>	193,250	34.2