

March 2023 Traffic Report

AVIATION DEPARTMENT (Data As Of 4/27/2023 4:23:04 PM)

REGION



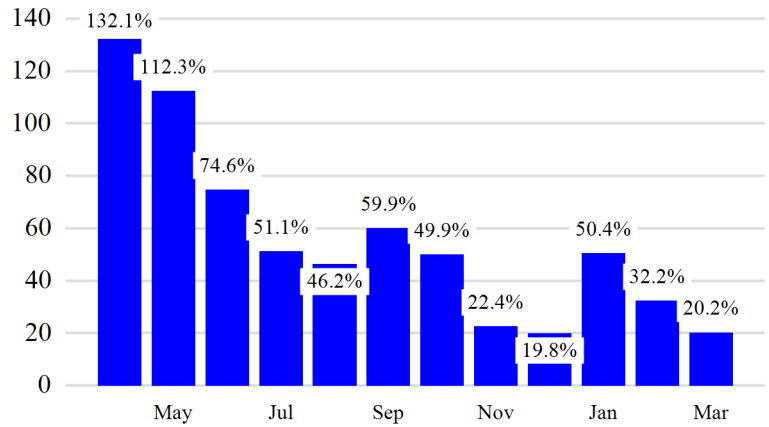
Revenue Passengers

	Curr Month	% Change
	12,135,084	20.2% ▲
Domestic	8,454,346	12.7%
International	3,680,738	41.7%
Non-Revenue	338,240	19.3%

Load Factors	Curr Month
Domestic	80.6%
International	80.1%

Avg Load Factor: 80.5%

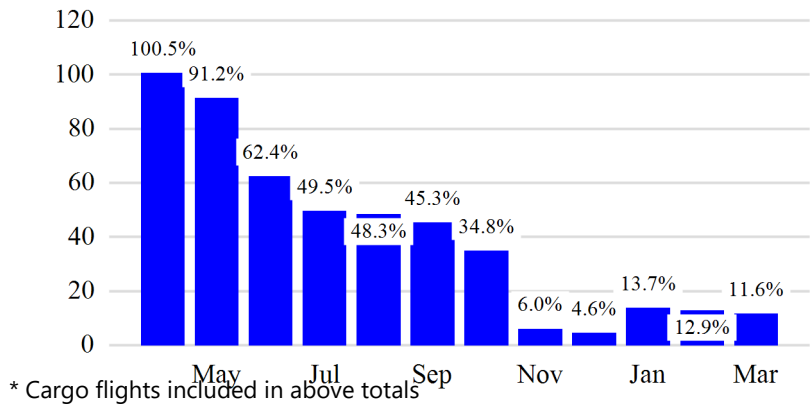
Year over Year % Change in Revenue Passengers - 12 Months



Total Flights

	Curr Month	% Change
	112,119	10.1% ▲
Excl GA	108,945	11.6% ▲
Domestic	85,138	7.2%
International	23,807	30.8%
Gen Aviation	3,174	-24.3%
Cargo Flights*	3,483	-7.4%

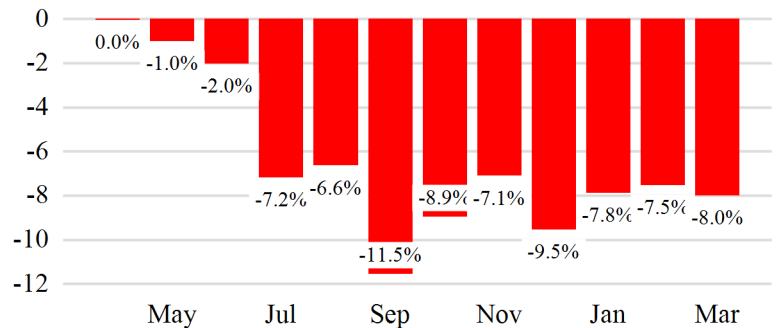
Year over Year % Change in Total Flights (Excl GA) - 12 Months



Cargo (Short Tons)

	Curr Month	% Change
	193,437	-8.0% ▼
Domestic	82,181	-7.7%
International	111,256	-8.1%
Mail	10,519	-14.2%

Year over Year % Change in Cargo - 12 Months



Top 5 Declines in Revenue Passengers by Airline

Airline	Pax Decline	% Decline
QATAR AIRWAYS	(9,433)	-23.0%
COPA AIRLINES	(6,321)	-19.0%
AMERICAN	(5,846)	0.0%
Avianca El Salvador	(254)	-1.0%
CAPE AIR	(124)	-20.0%

Top 5 Increases in Revenue Passengers by Airline

Airline	Pax Increase	% Increase
UNITED	506,549	20.0%
DELTA	411,878	17.0%
JETBLUE AIRWAYS	350,651	20.0%
AIR CANADA	74,513	124.0%
SPIRIT AIRLINES	73,153	23.0%

Airport Summary Statistics

JFK Summary

	Current Month	YoY %
Total Revenue Pax	5,157,954	22.0
Total Flights Including GA	41,243	11.0
Total Cargo (Short Tons)	128,872	-5.8

EWR Summary

	Current Month	YoY %
Total Revenue Pax	4,158,270	19.0
Total Flights Including GA	37,883	14.0
Total Cargo (Short Tons)	61,938	-12.1

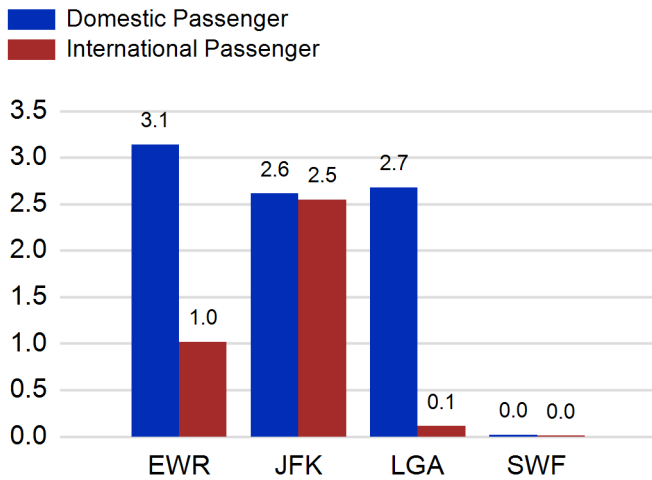
LGA Summary

	Current Month	YoY %
Total Revenue Pax	2,791,134	17.0
Total Flights Including GA	32,640	9.0
Total Cargo (Short Tons)	547	-5.3

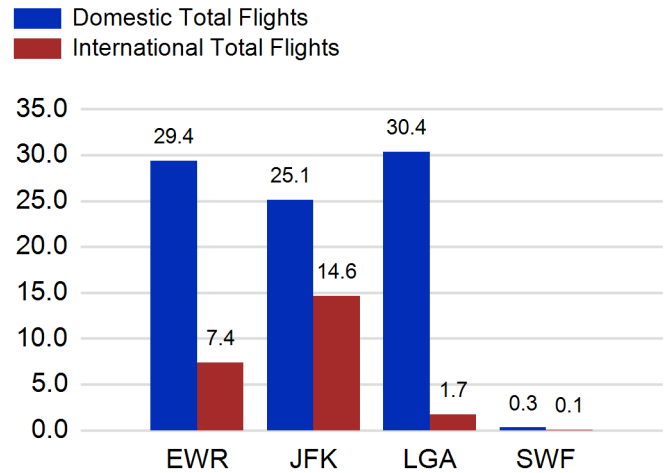
SWF Summary

	Current Month	YoY %
Total Revenue Pax	27,726	24.0
Total Flights Including GA	353	-82.0
Total Cargo (Short Tons)	2,080	-12.6

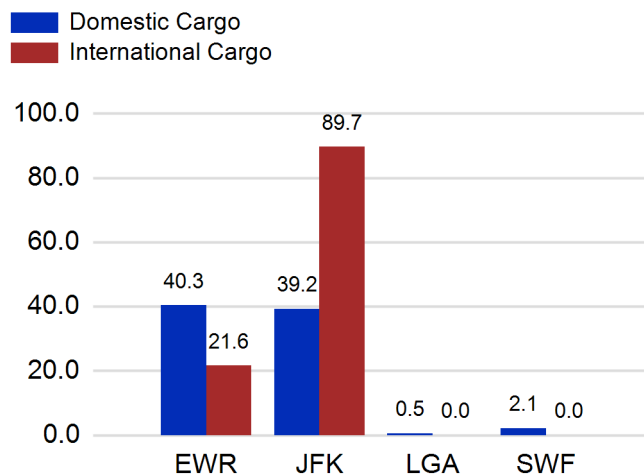
Total Passengers by Airport (Millions)



Total Flights by Airport (Thousands)



Total Cargo by Airport (Thousands of Short Tons)



12 Months Ending Passenger & Freight Statistics

Top 20 Airlines Ranking by Passengers & Freight: 12 Months Ending Mar 2023

Airline Name	Domestic	International	Total Pax	% of Tot	Airline Name	Short Tons	% of Tot
United	25,869,457	7,455,436	33,324,893	24.51%	FEDERAL EXPRESS	391,796	17.20%
DELTA	25,346,102	5,133,423	30,479,525	22.42%	UNITED PARCEL	202,024	8.87%
JETBLUE AIRWAYS	16,372,253	6,149,265	22,521,518	16.56%	UNITED	187,668	8.24%
AMERICAN	14,602,303	3,528,612	18,130,915	13.34%	DELTA	96,530	4.24%
SPIRIT AIRLINES	4,328,654	0	4,328,654	3.18%	AMERICAN	95,834	4.21%
SOUTHWEST AIRLINES	3,050,993	0	3,050,993	2.24%	KALITTA AIR LLC	82,964	3.64%
ALASKA AIRLINES	2,429,646	0	2,429,646	1.79%	ABX AIR INC	66,384	2.91%
BRITISH AIRWAYS	0	1,366,102	1,366,102	1.00%	ATLAS AIR	64,855	2.85%
Air Canada	0	1,351,553	1,351,553	0.99%	AIR TRANSPORT INT'L.(BAX Inc.)	57,160	2.51%
AIR FRANCE	313	1,176,190	1,176,503	0.87%	KOREAN	52,766	2.32%
EMIRATES AIRLINES	0	1,049,131	1,049,131	0.77%	CARGOLUX AIRLINES	50,236	2.21%
VIRGIN ATLANTIC	0	870,560	870,560	0.64%	BRITISH AIRWAYS	45,521	2.00%
LUFTHANSA	0	822,637	822,637	0.61%	CHINA AIRLINES (CAL)	44,399	1.95%
TURKISH AIR	0	744,062	744,062	0.55%	TURKISH AIR	39,065	1.71%
AER LINGUS	0	706,248	706,248	0.52%	VIRGIN ATLANTIC	37,189	1.63%
Avianca Costa Rica	0	688,512	688,512	0.51%	CATHAY PACIFIC	36,802	1.62%
EL AL	0	567,195	567,195	0.42%	LUFTHANSA CARGO	34,766	1.53%
IBERIA	0	499,074	499,074	0.37%	EVA	33,533	1.47%
FRONTIER AIRLINES	483,406	0	483,406	0.36%	AIR FRANCE	32,360	1.42%
SINGAPORE AIRLINES	0	459,865	459,865	0.34%	ASIANA	28,933	1.27%

Passengers & Freight by Market - 12 Months Ending

Market	Passengers	Freight (Short Tons)
TRANSATLANTIC	23,822,489	898,129
CANADA	3,010,159	3,731
CARIBBEAN + BERMUDA	7,872,323	13,566
CENTRAL AND SOUTH AMERICA	4,053,813	60,753
DOMESTIC	90,690,372	958,864
MEXICO	2,384,592	14,105
TRANSPACIFIC	1,730,469	320,473
PUERTO RICO	2,397,837	8,292

Additional Data

Airline Schedules (ADI): Non-Stop Destinations

	Region	Flights (Daily)	Cities
Domestic	Domestic	2626.6	111
	Puerto Rico	37.3	3
	Total	2,663.9	114.00
International	Canada	177.3	8
	Caribbean & Bermuda	149.6	25
	Central & South America	67.3	17
	Mexico	48.9	6
	Trans-Atlantic	296.6	55
	Trans-Pacific	28.1	9
	Total	767.7	120.00
Total	3,431.6	234.00	

Airline Schedules (ADI): Carriers & Aircraft Type

	Aircraft Type	Flights (Daily)	Carriers
Domestic	Commuter	992.6	4
	Narrow Body	1608.3	10
	Unknown	1.5	1
	Wide Body	61.5	4
	Total	2,663.9	19.00
International	Commuter	166.0	5
	Narrow Body	287.8	22
	Unknown	1.1	1
	Wide Body	312.7	55
	Total	767.7	83.00
Total	Total	3,431.6	102.00

Passenger Demographics (ACI ASQ Surveys - 2021)

Connect		Trip Type		Gender	
Local Origin/Destination	78.6%	Business	14.0%	M	49.6%
Connecting	21.4%	Leisure	86.0%	F	50.4%
Transport Mode		Annual Flights		Residency	
Bus/Shuttle	4.7%	1-2	61.5%	United States	81.0%
Other	18.7%	3-5	24.9%	Other	19.0%
Private/Company Car	37.5%	6-10	9.0%		
Rail/Subway	7.3%	11-20	2.8%		
Rental Car	4.6%	21+	1.8%		
Taxi/Limo	27.2%				

Ground Transportation

	Curr Month	% Change		Curr Month	% Change
<i>Paid Parked Cars</i>	323,636	-12.2	<i>Total Air Train Passengers</i>	2,918,831	48.7
<i>GTC Bookings</i>	0		<i>Paid Howard Beach Passengers</i>	120,723	32.7
<i>Airport Coach Passengers*</i>	27,013	21.0	<i>Paid Jamaica Passengers</i>	482,598	28.5
<i>Taxis Dispatched</i>	357,767	3.7	<i>Paid EWR Passengers</i>	216,755	35.8
			<i>On-Airport (Unpaid) Passengers</i>	2,098,755	57.0

*SWF data not available at the time of publication

Airlines for American Carriers (USA)

	Curr Month	% Change
<i>Freight:revenue ton miles (000)</i>	0	

Regional Airports: Other

	Curr Month	% Change
<i>TEB flight movements</i>	13,557	-5.0
<i>ISP Total passengers</i>	101,407	-25.8
<i>HPN Total passengers</i>	205,662	58.3