

Regional Focus: Central Jersey

Data and analysis for the Edison and Trenton-Ewing labor areas

Central Region Payrolls Reach Five-Year High

The five-county Central Region (Mercer, Middlesex, Monmouth, Ocean and Somerset counties) posted a net employment increase of 22,700 jobs or 1.9 percent over the year from March 2012 to March 2013 bringing area jobholding up to a level of 1,248,400. The region added jobs at a faster pace than the gain of 1.1 percent (+44,200 jobs) experienced statewide. The movement in total private sector employment (2.2%) was also faster in the region than at the statewide level (1.1%). The over-the-year gain in total employment was the region's second consecutive March-to-March increase; also, employment reached its highest level since 2008.

With a gain of 8,500 jobs or 4.0 percent, professional and business services led the region in job creation over the year. In comparison, firms in educational and health services posted the leading employment gain of 10,800 or 1.7 percent statewide. However, with a gain of 4.3 percent information was the fastest-growing sector regionally. Statewide, other services (+2.5%) recorded the steepest job gain from the same month a year ago.

Professional and Business Services is Edison's Job Growth Leader

In the Edison Labor Area (Monmouth, Middlesex, Ocean & Somerset counties), total nonfarm employment increased by 18,800 jobs or 1.9 percent during the March 2012-March 2013 period. Professional and business services led area job growth with an increase of 7,900 jobs or 4.5 percent. Employment services accounted for 3,200 of these new jobs, rising from a level of 33,200 jobs in 2012 to 36,400 jobs in 2013 (+9.6%). Employment levels were also up in trade, transportation and utilities (+4,800 jobs or +2.2%), educational and health services (+2,500 or 1.6%), leisure and hospitality (+1,400 or +1.7%), other services (+1,400 or +3.2%), and financial activities (+1,200 or +2.2%).

The payroll gain in educational and health services was due to an increase of 1,700 jobs in ambulatory health care services while hospitals increased by 300 jobs from the same month a year ago.

Despite an overall contraction of 200 jobs or 0.6 percent in the construction sector, the specialty trade contractors industry component added 700 jobs since March 2012, an increase of 3.4 percent. This gain is most likely the result of the significant number of workers involved in the repairs and construction necessary in the aftermath of Hurricane Sandy, especially in the



Focus on Central Jersey is a quarterly publication of the New Jersey Department of Labor Division of Labor Market and Demographic Research. For questions regarding the material in this publication contact Vin Samuel at (609)777-2189 or email vin.samuel@dol.state.nj.us

To subscribe to this publication email njsdc@dol.state.nj.us with "regional focus" in the subject line.

**Change in Nonfarm Employment
March 2012 - March 2013
(not seasonally adjusted)**

	Region		State	
	Net	%	Net	%
Total Nonfarm Employment	22,700	1.9	44,200	1.1
Private Sector	22,200	2.2	34,900	1.1
Construction	-100	0.3	500	-0.4
Manufacturing	300	0.4	2,100	0.9
Trade, Trans. & Utilities	4,700	1.9	7,500	0.9
Information	1,300	4.3	-4,200	-5.3
Financial Activities	1,200	1.7	1,200	0.5
Prof. & Business Svcs.	8,500	4.0	9,700	1.6
Ed. & Health Svcs.	3,500	1.7	10,800	1.7
Leisure & Hospitality	1,200	1.3	4,300	1.3
Other Services	1,600	3.0	400	2.5
Government	500	0.2	9,300	1.5

Source: NJLWD, Current Employment Statistics

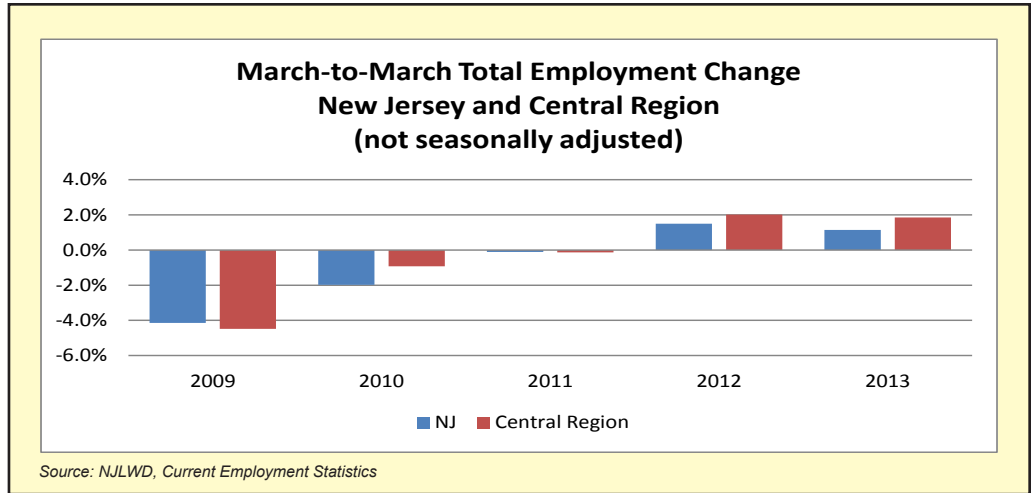


labor area's shore communities which were among some of the most severely impacted areas in the state. The specialty trade contractors industry is comprised of companies that are primarily involved in activities such as pouring concrete, masonry, plumbing, painting, electrical work, roofing, etc.

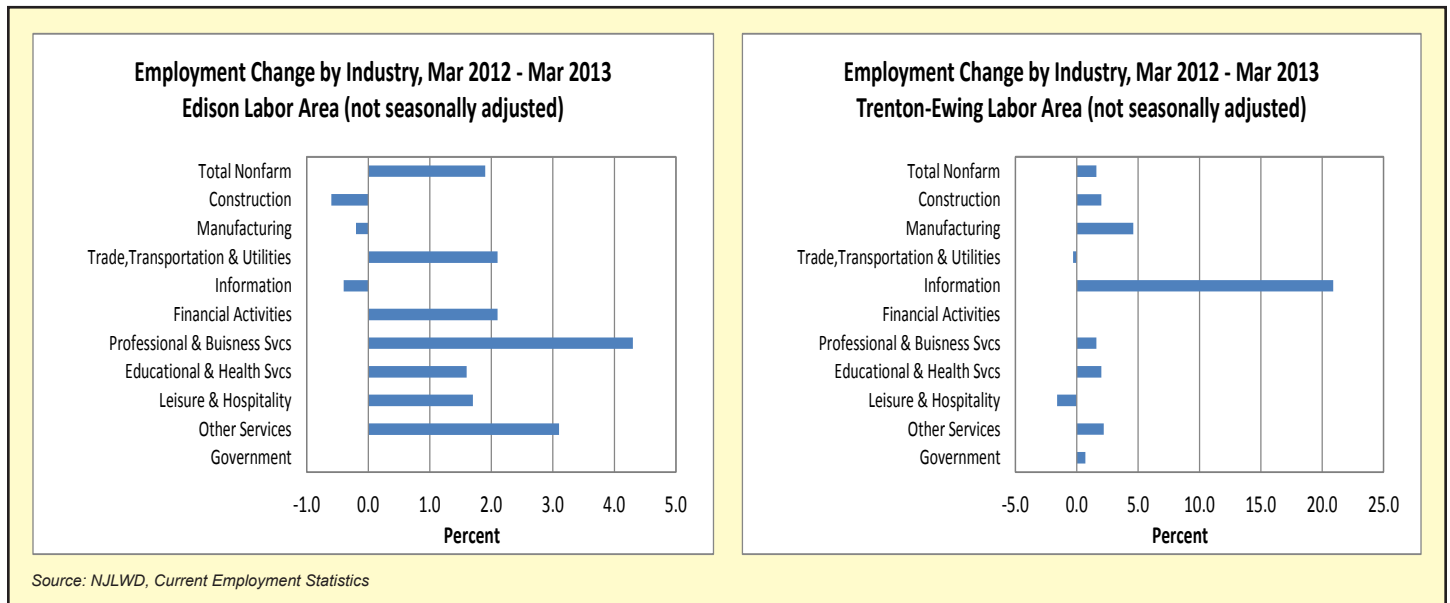
Over the year ending March 2013, employment in the Trenton-Ewing Labor Area rose by 3,900 jobs or 1.6 percent. The greatest contributor to this net increase was the information sector, which posted a gain of 1,400 jobs or 26.4 percent over the year. Educational and health services (+1,000) had the second highest employment gain in the Trenton-Ewing Labor Area over the period. Not surprisingly, the largest contribution to the gain in this sector was found in educational services (+700 jobs or 3.4%). Although the health care and social assistance industry was up by 300 jobs or 1.1 percent, the hospitals component shed 300 jobs or -3.0 percent over the year. The fall 2012 move of University Medical Center of Princeton hospital from Mercer County to Middlesex County (Plainsboro) affected the area's hospital industry sector employment. Also, Capital Health has reduced staff at its hospital in Hopewell (Mercer County).

Total Nonfarm Employment (unadjusted December data, employment in thousands)						
	2008	2009	2010	2011	2012	2013
New Jersey	4,041.4	3,874.0	3,797.4	3,793.3	3,850.2	3,894.4
Central Region	1,271.3	1,214.3	1,203.1	1,201.5	1,225.7	1,248.4
Edison Labor Area (Middlesex, Monmouth, Ocean, Somerset counties)	1,029.9	976.7	965.8	962.9	983.4	1,002.2
Trenton-Ewing Labor Area (Mercer County)	241.4	237.6	237.3	238.6	242.3	246.2

Source: NJLWD, Current Employment Statistics

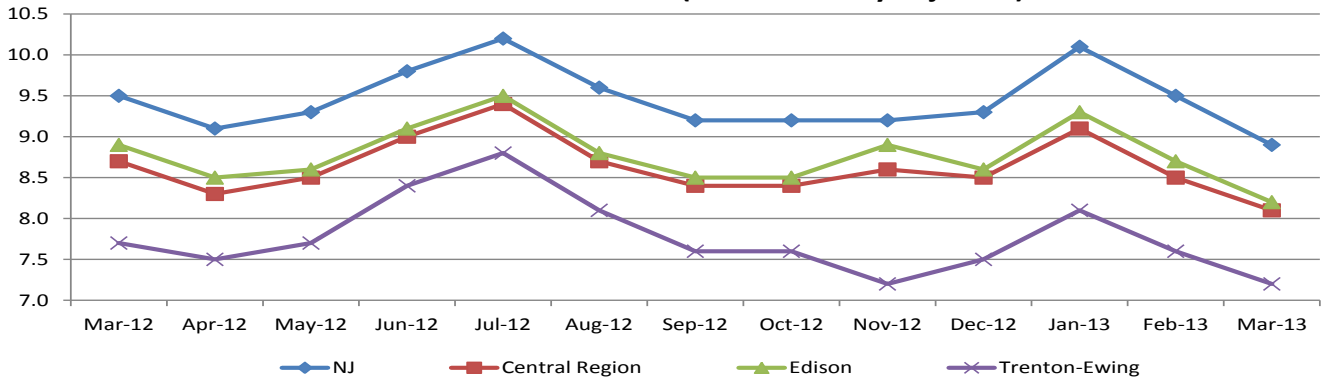


educational services (+700 jobs or 3.4%). Although the health care and social assistance industry was up by 300 jobs or 1.1 percent, the hospitals component shed 300 jobs or -3.0 percent over the year. The fall 2012 move of University Medical Center of Princeton hospital from Mercer County to Middlesex County (Plainsboro) affected the area's hospital industry sector employment. Also, Capital Health has reduced staff at its hospital in Hopewell (Mercer County).



More detailed data from the Current Employment Statistics (CES) program can be found at: http://lwd.dol.state.nj.us/labor/lpa/employ/ces/ces_index.html

**Unemployment Rates, New Jersey and Central Region
 March 2012 - March 2013 (not seasonally adjusted)**



Source: NJLWD, Local Area Unemployment Statistics (LAUS)

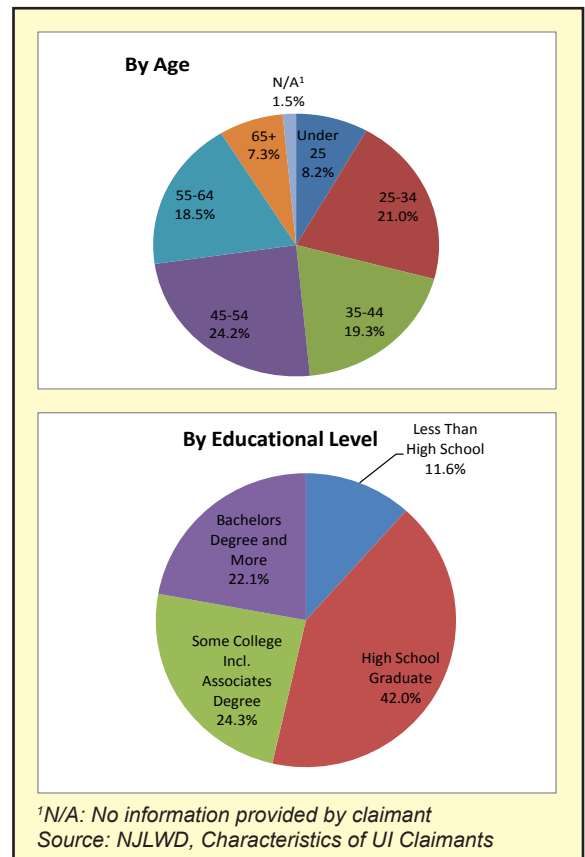
- From March 2012 to March 2013 the not seasonally adjusted unemployment rate in New Jersey declined from 9.5 percent to 8.9 percent. At 8.1 percent in March 2013, the unemployment rate for the Central Region was lower than the statewide rate. The region's unemployment rate followed the state trend declining from 8.7 percent in March 2012.
- During March 2013, the unemployment rate in the Trenton-Ewing Labor Area (7.2%) continued to be lower than the rate for the Edison Labor Area (8.2%). The Edison Labor Area's unemployment rate continues to be affected negatively by Monmouth and Ocean counties whose unemployment rates remain elevated since the national recession ended in June 2009.

More detailed data from the Local Area Unemployment Statistics (LAUS) program can be found at:
http://lwd.dol.state.nj.us/labor/lpa/employ/uirate/lfest_index.html

**CHARACTERISTICS OF NEW JERSEY'S
 INSURED UNEMPLOYED
 CENTRAL REGION, FIRST QUARTER 2013**

CLAIMANTS BY OCCUPATIONAL GROUP		
	Number	Percent
Management	9,665	10.0
Business and Financial	3,281	3.4
Professional and Related	11,859	12.2
Services	16,129	16.7
Sales and Related	7,934	8.2
Office and Administrative Support	15,128	15.6
Farming, Fishing and Forestry	243	0.3
Construction and Extraction	8,879	9.2
Installation, Maintenance and Repair	3,855	4.0
Production	8,086	8.4
Transportation and Material Moving	11,062	11.4
Military	550	0.6

- During the first quarter of 2013, residents previously employed in the services occupational group (health care support, protective service, food services, etc) continue to represent the largest group of unemployment benefit claimants (16,129) in the Central Region. Claimants previously employed in office and administrative support occupations accounted for the second largest number of claims (15,128) and represented 15.6 percent of total unemployment benefit claimants in the region during the first quarter of 2013.



Regional Employment Developments

During the first quarter of 2013, there were a number of notable economic developments reported throughout the Central Region. The following is a listing by industry.

Manufacturing

Church & Dwight's re-commitment to the State of New Jersey was finalized in May as the company opened its new worldwide headquarters in Ewing Township (Mercer County). The company is moving 500 employees into the recently completed Princeton South Corporate Center to accommodate its need for additional office space. The corporate center was already home to several companies and a hotel helping to boost the local economy. Church & Dwight, which has approximately 1,000 employees in the state, also reached a 20-year deal with the Trenton Thunder, the Double-A affiliate of the New York Yankees, for their ballpark naming rights.

Dr. Reddy Laboratories plans to relocate its North American headquarters to the Plainsboro area by the end of summer 2013. The company expects to establish a research and development center and employ more than 300 workers at the Middlesex County site. Novo Nordisk, a Danish pharmaceutical company that is currently housed in offices along Route 1 in Plainsboro is in the process of transferring its operations to a newly refurbished building that was owned and utilized by Merrill Lynch before its move to the Hopewell campus in Mercer County.

Retail

In March 2013, a BJ's Wholesale Club opened along Route 1 South in North Brunswick (Middle-

sex County). The warehouse membership club is located across from a former Johnson & Johnson property which is being redeveloped as a mixed-use center.

Transportation and Warehousing

Last quarter it was reported that Amazon.com will open a large warehouse in Robbinsville, Mercer County in early 2014. It is now reported that the company is also planning to open an additional warehouse in the Avenel section of Woodbridge (Middlesex County). The two-building complex in Avenel was left open due to the closing of C&S Wholesale Grocers two years ago.

In Bridgewater, (Somerset County) Ashland, a transportation, construction, chemical and petroleum company is expected to move to a site along Route 206 that was formerly occupied by Sanofi Aventis. This move may bring up to 300 jobs to Somerset County.

Health Care

In Monmouth County, a former AT&T/Lucent complex is slated to be transformed into a Sloan Kettering Cancer research and treatment facility. It is anticipated that when the center becomes operational it will bring roughly 280 jobs to the area.

Construction

At shore communities in Middlesex, Monmouth and Ocean counties construction activities are underway repairing damages from Hurricane Sandy. Work includes projects such as repairing homes and businesses, rebuilding boardwalks and attractions, and restoring infrastructure.

Central Region Counties, 2010-2020 Projected Annual Job Openings			
	Annual Average Job Openings		
	Total	Growth	Replacements
New Jersey	132,940	35,070	97,870
Mercer	8,500	2,530	5,970
Middlesex	13,760	3,910	9,850
Monmouth	9,340	2,650	6,680
Ocean	6,160	2,040	4,120
Somerset	6,430	2,020	4,410

- The recently released 2010-2020 industry and occupational employment projections for the State of New Jersey were developed by the New Jersey Department of Labor and Workforce Development, Division of Labor Market and Demographic Research, as part of the Division's economic and demographic projections series. The projections are neither predictions nor forecasts. For more detailed projections data, click [here: http://lwd.dol.state.nj.us/labor/lpa/employ/indoccpj/indoccpj_index.html](http://lwd.dol.state.nj.us/labor/lpa/employ/indoccpj/indoccpj_index.html).
- Occupational projections estimate a breakdown of annual average job openings due to two factors: actual growth and replacement demand. Openings due to growth are new job opportunities representing growth in the employment base of an occupation. Open-

ings due to replacement demand are an estimate of employment opportunities to replace a worker in the current workforce. This does not increase the employment base, but still represents an employment opportunity. The need to replace a worker can occur from a variety of reasons, including promotion, termination, and retirement.