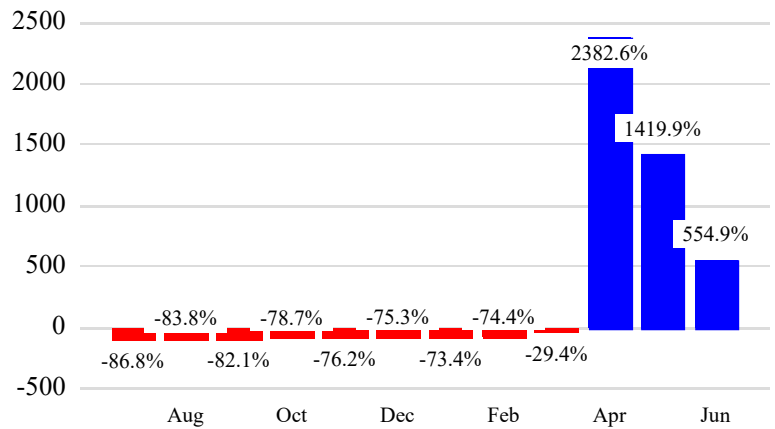


Revenue Passengers

	Curr Month	% Change
	6,703,620	554.9%
Domestic	4,987,564	474.7%
International	1,716,056	1002.1%
Non-Revenue	190,275	178.4%

Load Factors	Curr Month	
Domestic	82.6%	 76.0% Avg Load Factor
International	61.7%	

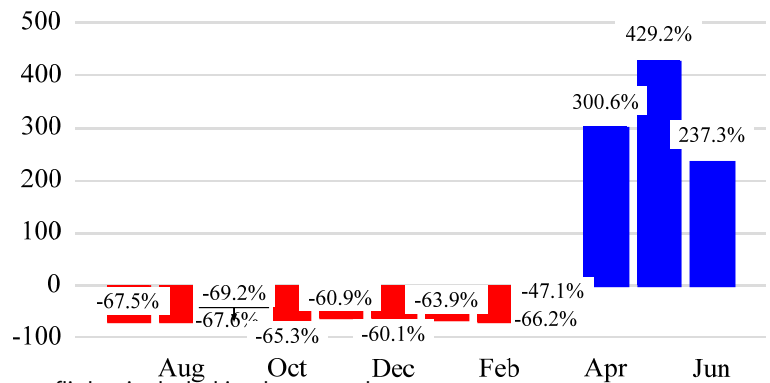
Year over Year % Change in Revenue Passengers - 12 Months



Total Flights

	Curr Month	% Change	
	63,387	215.7%	▲
Excl GA	60,427	237.3%	▲
Domestic	45,877	217.1%	
International	14,550	322.0%	
Gen Aviation	2,960	36.8%	
Cargo Flights*	3,186	-18.7%	

Year over Year % Change in Total Flights (Excl GA) - 12 Months

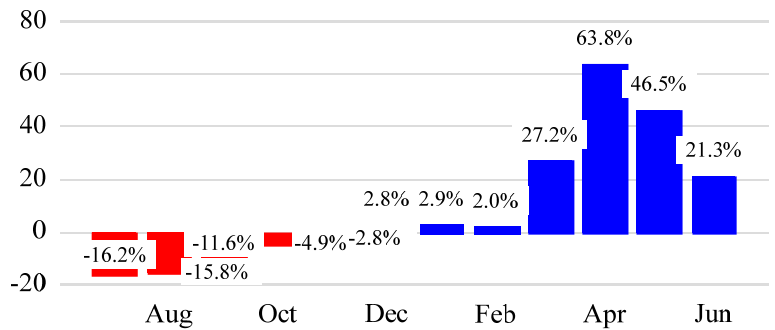


* Cargo flights included in above totals

Cargo (Short Tons)

	Curr Month	% Change	
	183,720	21.3%	▲
Domestic	90,063	24.3%	
International	93,657	18.6%	
Mail	19,353	104.7%	

Year over Year % Change in Cargo - 12 Months



Top 5 Declines in Revenue Passengers by Airline

Airline	Pax Decline	% Decline
AIR INDIA	(1,896)	-21.0%
ASIANA	(840)	-19.0%
CAPE AIR	(99)	-26.0%

Top 5 Increases in Revenue Passengers by Airline

Airline	Pax Increase	% Increase
DELTA	1,494,855	979.0%
JETBLUE AIRWAYS	1,311,705	732.0%
UNITED	1,303,955	607.0%
AMERICAN	664,104	308.0%
SPIRIT AIRLINES	184,755	386.0%

Airport Summary Statistics

JFK Summary

	Current Month	YoY %
Total Revenue Pax	2,963,848	699.0
Total Flights Including GA	26,499	256.0
Total Cargo (Short Tons)	127,918	26.5

EWR Summary

	Current Month	YoY %
Total Revenue Pax	2,537,909	571.0
Total Flights Including GA	23,026	242.0
Total Cargo (Short Tons)	69,915	28.8

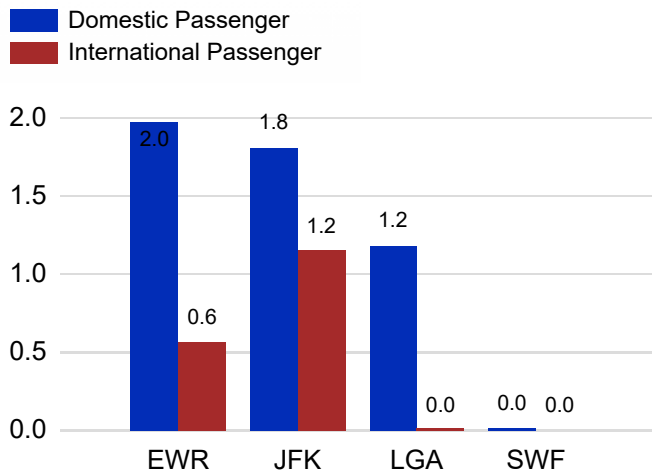
LGA Summary

	Current Month	YoY %
Total Revenue Pax	1,187,689	342.0
Total Flights Including GA	11,495	176.0
Total Cargo (Short Tons)	704	30.2

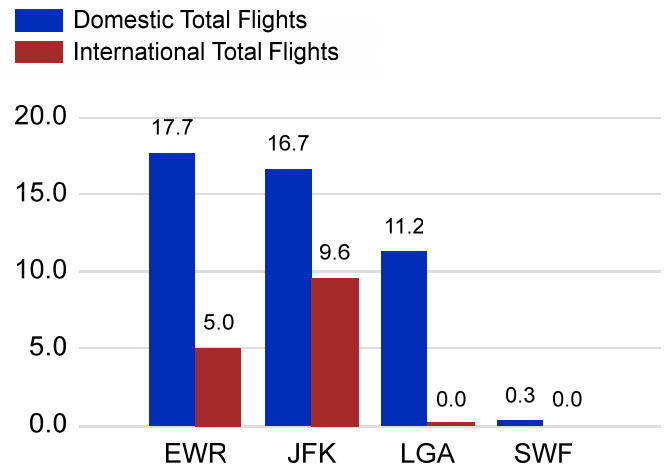
SWF Summary

	Current Month	YoY %
Total Revenue Pax	14,174	113.0
Total Flights Including GA	2,367	53.0
Total Cargo (Short Tons)	4,537	-7.6

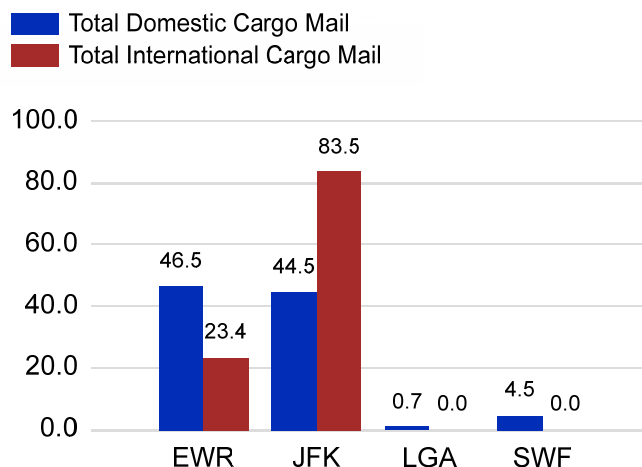
Total Passengers by Airport (Millions)



Total Flights by Airport (Thousands)



Total Cargo by Airport (Thousands of Short Tons)



12 Months Ending Passenger & Freight Statistics

Top 20 Airlines Ranking by Passengers & Freight: 12 Months Ending Jun 2021

Airline Name	Domestic	International	Total Pax	% of Tot	Airline Name	Short Tons	% of Tot
UNITED	8,247,315	2,266,137	10,513,452	26.33%	FEDERAL EXPRESS	451,170	21.58%
DELTA	7,172,877	1,299,953	8,472,830	21.22%	UNITED PARCEL	217,688	10.41%
JETBLUE AIRWAYS	5,830,826	2,579,901	8,410,727	21.06%	United	185,620	8.88%
AMERICAN	4,612,935	323,671	4,936,606	12.36%	AIR TRANSPORT INT'L.(BAX Inc.)	85,662	4.10%
SPIRIT AIRLINES	2,063,894	0	2,063,894	5.17%	ATLAS AIR	83,639	4.00%
SOUTHWEST AIRLINES	856,192		856,192	2.14%	KALITTA AIR LLC	70,222	3.36%
FRONTIER AIRLINES	567,770	8,579	576,349	1.44%	DELTA	65,748	3.14%
ALASKA AIRLINES	400,493		400,493	1.00%	KOREAN	57,463	2.75%
COPA AIRLINES		338,119	338,119	0.85%	CATHAY PACIFIC	55,537	2.66%
TURKISH AIR		272,962	272,962	0.68%	CARGOLUX AIRLINES	52,942	2.53%
QATAR AIRWAYS		181,147	181,147	0.45%	CHINA AIRLINES (CAL)	50,766	2.43%
AVIANCA		179,968	179,968	0.45%	AMERICAN	42,564	2.04%
EMIRATES AIRLINES		176,319	176,319	0.44%	QATAR AIRWAYS	35,496	1.70%
AIR INDIA		174,229	174,229	0.44%	CHALLENGE AIRLINES (formerly ACE BELGIUM)	35,346	1.69%
AIR CANADA		148,472	148,472	0.37%	ABX AIR INC	35,049	1.68%
ALLEGiant AIR	122,985		122,985	0.31%	LUFTHANSA CARGO	34,224	1.64%
EGYPT AIR		119,301	119,301	0.30%	AIR CHINA INTERNATIONAL	33,773	1.62%
AIR FRANCE		111,976	111,976	0.28%	VIRGIN ATLANTIC	33,018	1.58%
LUFTHANSA CARGO		104,849	104,849	0.26%	TURKISH AIR	26,027	1.24%
AEROMEXICO		104,316	104,316	0.26%	BRITISH AIRWAYS	24,473	1.17%

Passengers & Freight by Market - 12 Months Ending

Market	Passengers	Freight (Short Tons)
TRANSATLANTIC	3,457,729	685,339
CANADA	155,482	1,567
CARIBBEAN + BERMUDA	3,749,191	12,182
CENTRAL AND SOUTH AMERICA	1,290,974	22,165
DOMESTIC	28,534,952	993,359
MEXICO	1,097,349	8,474
TRANSPACIFIC	230,385	360,072
PUERTO RICO	1,412,384	7,977

Additional Data

Airline Schedules (ADI): Non-Stop Destinations

	Region	Flights (Daily)	Cities
Domestic	Domestic	1477.6	91
	Puerto Rico	43.6	2
	Total	1,521.2	93.00
International	Canada	15.2	2
	Caribbean & Bermuda	167.8	18
	Central & South America	60.8	17
	Mexico	38.6	5
	Trans-Atlantic	141.6	42
	Trans-Pacific	13.6	8
	Total	437.6	92.00
	Total	1,958.8	185.00

Airline Schedules (ADI): Carriers & Aircraft Type

	Aircraft Type	Flights (Daily)	Carriers
Domestic	Commuter	612.7	4
	General Aviation	3.5	1
	Narrow Body	840.3	10
	Wide Body	64.7	5
Total	Total	1,521.2	20.00
International	Commuter	14.4	3
	Narrow Body	261.2	17
	Wide Body	162.0	48
	Total	437.6	68.00
Total	Total	1,958.8	88.00

Passenger Demographics (ACI ASQ Surveys - 2019)

Connect		Trip Type		Gender	
Local Origin/Destination	83.7%	Business	21.9%	F	47.6%
Connecting	16.3%	Leisure	78.1%	M	52.4%
Transport Mode		Annual Flights		Residency	
Bus/Shuttle	9.7%	1-2	49.7%	United States	22.9%
Other	11.3%	3-5	29.8%	Other	77.1%
Private/Company Car	42.0%	6-10	12.6%		
Rail/Subway	6.8%	11-20	4.7%		
Rental Car	10.1%	21+	3.2%		
Taxi/Limo	20.1%				

Ground Transportation

	Curr Month	% Change		Curr Month	% Change
<i>Paid Parked Cars</i>	320,756	300.6	<i>Total Air Train Passengers</i>	1,467,703	352.4
<i>GTC Bookings</i>	0		<i>Paid Howard Beach Passengers</i>	64,291	379.1
<i>Airport Coach Passengers</i>	0	-100.0	<i>Paid Jamaica Passengers</i>	242,311	460.5
<i>Taxis Dispatched</i>	211,952	701.1	<i>Paid EWR Passengers</i>	117,719	779.3
			<i>On-Airport (Unpaid) Passengers</i>	1,043,382	310.2

Airlines for American Carriers (USA)

	Curr Month	% Change
<i>Freight:revenue ton miles (000)</i>	0	-100.0

Regional Airports: Other

	Curr Month	% Change
<i>TEB flight movements</i>	10,040	104.1
<i>ISP Total passengers</i>	98,157	303.4
<i>HPN Total passengers</i>	90,164	