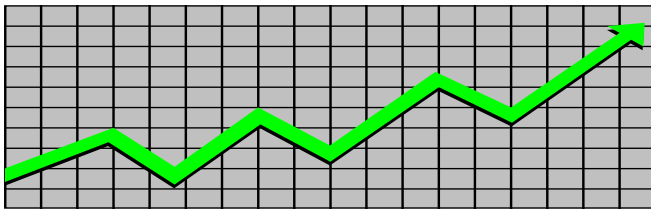


State of New Jersey
Department of Human Services
Division of Family Development

CURRENT PROGRAM STATISTICS



August 2023
Natasha Johnson, Assistant Commissioner

TABLE OF CONTENTS

HIGHLIGHTS:

WFNJ/TANF	ii
NJ SNAP	ii
EMERGENCY ASSISTANCE	ii
GENERAL ASSISTANCE	iii
GA Emergency Assistance.....	iii
GA Program.....	iii
CHILD SUPPORT SERVICES	iii
WORK FIRST NEW JERSEY (WFNJ)	iii
STATISTICS- BY STATE & COUNTY	1
Table 1: WFNJ/TANF Families & Persons (NJ Statewide) August 2021 to 2023.....	1
Table 2: WFNJ/TANF Families (by County)- August 2023.....	2
Table 2B: WFNJ/TANF Persons, Adults, & Children (by County)- August 2023.....	3
Table 3: TANF Work Participation Rates Over 12 Month Period (by County)- August 2023.....	4
Table 4: TANF Work Participation Rates Over 12 Month Period (NJ Statewide)- August 2023.....	5
Table 5: NJ SNAP Households/Persons (NJ Statewide) August 2021 to 2023.....	6
Table 6: NJ SNAP Recipient Trends (NJ Statewide) August 2021 to 2023.....	7
Table 7: NJ SNAP Households/Persons (by County)- August 2023.....	8
Table 8: Emergency Assistance Program (NJ Statewide) August 2021 to 2023.....	9
Table 9: Emergency Assistance Program (by County)- August 2023.....	10
Table 10: General Assistance Program (NJ Statewide) August 2021 to 2023.....	11
Table 11: General Assistance Program (by County)- August 2023.....	12
Table 12: Child Support Services Distributions (NJ Statewide) FFY 2023.....	13
Table 13: Child Support Services Paternities Established- August 2023.....	14
Table 14: Child Support Services Cases With Orders- August 2023.....	15
Table 15: Child Support Services Collections On Current Support- August 2023.....	16
Table 16: Child Support Services Cases With Payments On Arrears- August 2023.....	17
Table 17: WFNJ Statistical Summary- August 2023.....	18
ACRONYMS	19
EXPLANATORY NOTES	20
WFNJ Statistical Summary (Table 17).....	20

DIVISION OF FAMILY DEVELOPMENT CURRENT PROGRAM STATISTICS AUGUST 2023

Each month the Division of Family Development publishes its program statistics for: WFNJ/TANF, NJ SNAP, Emergency Assistance, General Assistance, and Child Support Services. When possible, information is provided separately for children and adults. Many tables also provide trend data with information broken down by county for readers to consider. This report is compiled and prepared by The Bureau of Research & Reporting.

WFNJ/TANF

- As of the end of August, the TANF caseload had increased by 280 cases, from 11,024 in August 2022 to 11,304 in August 2023; an increase of 2.5%.
- The counties with caseloads that increased the most since August 2022 were Essex (29%), Bergen (21.8%), and Morris (19.8%).
- The counties with caseloads that decreased the most since August 2022 were Passaic (-20.1%), Warren (-16.3%), and Hunterdon (-16.2%).
- Of the WFNJ/TANF cases, 2,445 or 21.6% were child-only in August 2023.
- The counties with the most child-only cases were Camden (419), Hudson (343), and Essex (258).
- Hudson (5,201), Essex (4,725), and Camden (4,064) counties had the greatest number of persons receiving TANF in August 2023.

NJ SNAP (Formerly FOOD STAMPS)

- In August 2023, there were 410,272 households receiving NJ SNAP benefits. The number of NJ SNAP households decreased by 24,080 or -5.5%, since August 2022.
- There were 788,828 persons receiving NJ SNAP benefits as of August 2023; a decrease of 87,767 or -10% since August 2022.
- The counties having the highest SNAP caseload increase since August 2022 were Morris (2.2%) and Hunterdon (1.1%).
- The counties having the highest SNAP caseload decrease since August 2022 were Atlantic (-12.1%), Essex (-10.6%), and Gloucester (-7.5%).

EMERGENCY ASSISTANCE

- There were 1,374 TANF families receiving Emergency Assistance (EA) in August 2023; a decrease of 135 or -8.9% since August 2022.
- In August 2023, EA payments were made for 594 SSI recipients.

DIVISION OF FAMILY DEVELOPMENT CURRENT PROGRAM STATISTICS AUGUST 2023

- There were 1,870 GA cases with Emergency Assistance payments in August 2023; a decrease of 217 or -10.4% since August 2022.
- The counties that showed the highest percent increase in Emergency Assistance payments were Gloucester (1200%), Cumberland (75%), and Atlantic (39.3%).
- The counties that showed the highest percent decrease in Emergency Assistance payments were Sussex (-60%), Camden (-51.6%), and Warren (-41.9%).

GENERAL ASSISTANCE

- The total numbers of cases receiving GA has decreased from 13,127 to 11,657 since August 2022; a decrease of -11.2%.
- There were 7,840 Employable GA and 3,817 Unemployable GA cases in August 2023.
- The counties that showed a percent increase for GA cases were Somerset (18.5%), Cumberland (14.1%), and Union (10.4%) since August 2022.
- The counties that showed the highest percent decrease for GA cases since August 2022 were Sussex (-35.9%), Hunterdon (-32%), and Salem (-28%).
- In August 2023, GA cases showed a 8.69% increase since July 2023.

CHILD SUPPORT SERVICES (QUARTERLY REPORT)

- The total collection for the Child Support Services Program was about \$272 million from April 2023 to June 2023; a decrease of -2.62% over the same period from FFY 2022.
- Total distributions decreased -3.1% from June 2022.

WORK FIRST NEW JERSEY (WFNJ)

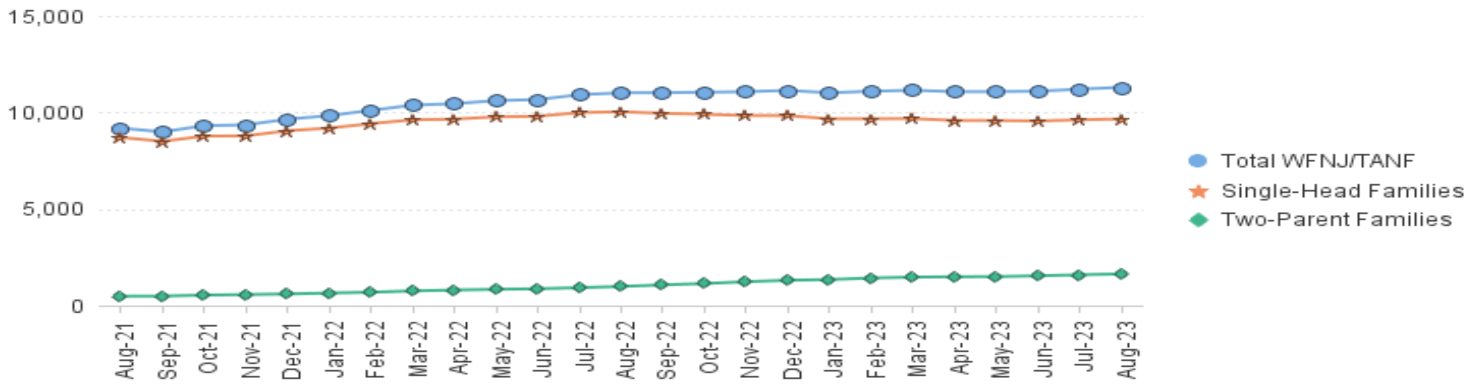
- During the report month of August 2023, there were 539 families in which at least one member was employed and an additional 141 families whose WFNJ assistance cases were closed due to employment - related earnings.
- The three counties with the greatest number of employed active WFNJ recipients were: Essex (124), Hudson (102), and Mercer (52).
- There were 244 former TANF cases receiving post-TANF support in the form of child care assistance.

TABLE 1: WFNJ/TANF PROGRAM

STATEWIDE NUMBER OF APPLICATIONS AND TERMINATIONS DURING AUGUST 2023
 NUMBER OF ELIGIBLE FAMILIES & PERSONS RECEIVING WFNJ/TANF FOR AUGUST 2023

		AUGUST 2021 THROUGH AUGUST 2023										
		Cases Added	Cases Closed	Child-Only Cases ‡	Total Single-Head Families	2-Parent Families	Total WFNJ/TANF Families	%CHNG (1 Yr.)	Total Persons	%CHNG (1 Yr.)	Adults	Children
2021	AUG	415	544	3,029	8,709	482	9,191	-22.4%	23,445	-23.0%	6,644	16,801
	SEP	388	588	2,945	8,507	489	8,996	-22.0%	23,009	-22.1%	6,540	16,469
	OCT	833	564	2,921	8,779	538	9,317	-16.7%	23,888	-16.6%	6,934	16,954
	NOV	656	614	2,816	8,791	568	9,359	-13.6%	24,282	-12.5%	7,111	17,171
	DEC	702	432	2,824	9,054	601	9,655	-9.6%	25,177	-8.0%	7,432	17,745
2021	Average	458	563	3,101	9,151	532	9,683		24,807		7,114	17,693
2022	JAN	667	484	2,796	9,193	645	9,838	-6.4%	25,789	-4.3%	7,687	18,102
	FEB	655	414	2,794	9,424	689	10,113	-2.5%	26,638	0.4%	8,008	18,630
	MAR	715	512	2,804	9,623	756	10,379	0.8%	27,433	4.2%	8,331	19,102
	APR	644	622	2,743	9,656	802	10,458	5.5%	27,749	9.8%	8,517	19,232
	MAY	632	475	2,723	9,777	838	10,615	8.7%	28,183	13.4%	8,730	19,453
	JUN	622	599	2,718	9,802	869	10,671	12.4%	28,287	17.1%	8,822	19,465
	JUL	679	518	2,715	9,998	925	10,923	17.2%	29,043	22.1%	9,133	19,910
	AUG	713	609	2,687	10,037	987	11,024	19.9%	29,453	25.6%	9,324	20,129
	SEP	755	808	2,651	9,959	1,070	11,029	22.6%	29,486	28.1%	9,448	20,038
	OCT	753	821	2,626	9,910	1,139	11,049	18.6%	29,606	23.9%	9,562	20,044
	NOV	801	822	2,573	9,843	1,234	11,077	18.4%	29,858	23.0%	9,738	20,120
	DEC	747	792	2,578	9,837	1,308	11,145	15.4%	30,064	19.4%	9,875	20,189
2022	Average	699	623	2,701	9,755	939	10,693		28,466		8,931	19,535
2023	JAN	669	792	2,560	9,674	1,346	11,020	12.0%	29,683	15.1%	9,806	19,877
	FEB	760	717	2,531	9,676	1,426	11,102	9.8%	30,019	12.7%	9,997	20,022
	MAR	822	864	2,565	9,683	1,470	11,153	7.5%	30,069	9.6%	10,058	20,011
	APR	739	858	2,548	9,587	1,490	11,077	5.9%	29,826	7.5%	10,019	19,807
	MAY	825	813	2,523	9,586	1,498	11,084	4.4%	29,863	6.0%	10,059	19,804
	JUN	827	855	2,500	9,562	1,540	11,102	4.0%	29,926	5.8%	10,142	19,784
	JUL	823	764	2,487	9,624	1,590	11,214	2.7%	30,222	4.1%	10,317	19,905
	AUG	887	841	2,445	9,666	1,638	11,304	2.5%	30,533	3.7%	10,497	20,036
2023	Average To Date	794	813	2,520	9,632	1,500	11,132		30,018		10,112	19,906

NJ STATEWIDE
 Eligible Families Receiving WFNJ/TANF
 AUGUST 2021 THROUGH AUGUST 2023



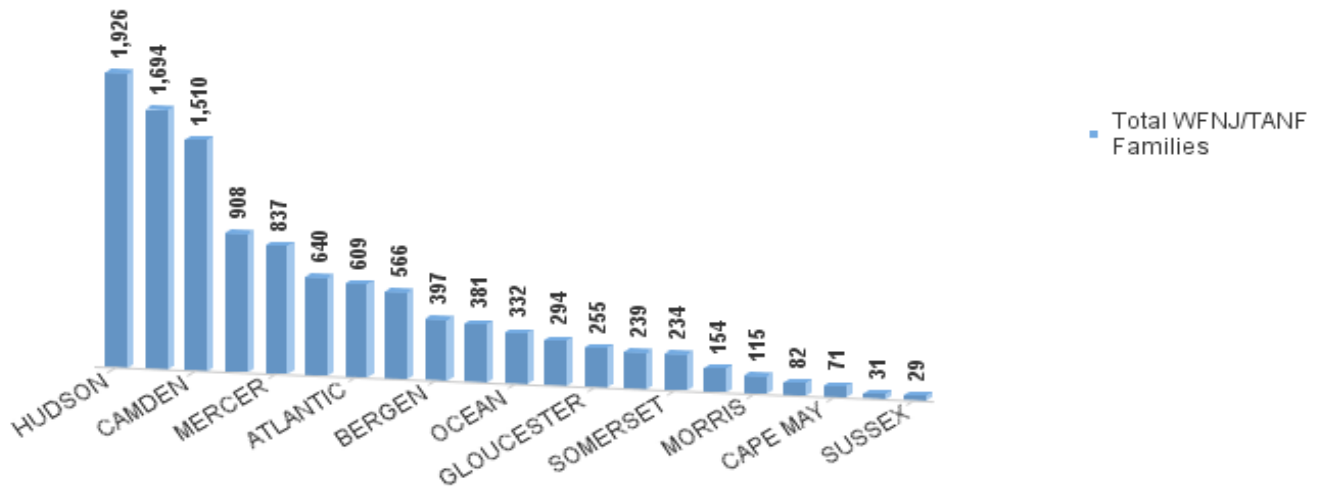
Data is derived from NJ MMIS Shared Data Warehouse Issuance files.
 Effective July 2013 this data query source was converted to the SDW

‡ Child-only cases are defined as families in which no eligible adult receives TANF program benefits, yet the family continues to be headed by at least one of the biological parents, or grandparents, or other appropriate adult.

TABLE 2:
WFNJ/TANF PROGRAM **NUMBER OF APPLICATIONS AND TERMINATIONS BY COUNTY DURING AUGUST 2023**
NUMBER OF ELIGIBLE FAMILIES RECEIVING WFNJ/TANF FOR AUGUST 2023

County	Cases		Child-Only	1-Adult	Total Single-Head	Total 2-Parent	Total WFNJ/TANF	%CHNG (3 Mon)	%CHNG (1 Yr.)
	Added	Closed **	Cases ‡	Cases	Families	Families	Families		
ATLANTIC	37	33	172	388	560	49	609	1.2%	-14.1%
BERGEN	39	36	63	265	328	69	397	-4.8%	21.8% Δ
BURLINGTON	26	56	94	256	350	31	381	0.3%	3.0%
CAMDEN	110	130	419	935	1,354	156	1,510	-0.4%	-4.8%
CAPE MAY	4	3	26	39	65	6	71	-11.3%	-10.1%
CUMBERLAND	15	29	94	159	253	41	294	-6.1%	5.8%
ESSEX	108	64	258	952	1,210	484	1,694	6.6%	29.0% Δ
GLOUCESTER	24	24	80	160	240	15	255	-3.8%	-5.2%
HUDSON	192	114	343	1,329	1,672	254	1,926	7.2%	10.6%
HUNTERDON	2	0	4	23	27	4	31	-20.5%	-16.2% *
MERCER	62	82	168	542	710	127	837	2.8%	5.0%
MIDDLESEX	43	44	154	367	521	45	566	0.9%	-4.4%
MONMOUTH	31	21	58	162	220	19	239	3.0%	3.5%
MORRIS	11	6	19	78	97	18	115	8.5%	19.8% Δ
OCEAN	28	26	66	230	296	36	332	0.6%	-3.2%
PASSAIC	42	59	221	617	838	70	908	-4.6%	-20.1% *
SALEM	16	17	41	93	134	20	154	-3.1%	-7.8%
SOMERSET	20	16	42	176	218	16	234	8.8%	14.1%
SUSSEX	3	6	9	16	25	4	29	-3.3%	7.4%
UNION	72	62	97	374	471	169	640	3.9%	2.6%
WARREN	2	13	17	60	77	5	82	-8.9%	-16.3% *
NJ Total	887	841	2,445	7,221	9,666	1,638	11,304	1.8%	2.5%

Total WFNJ/TANF Families
AUGUST 2023
By County



Data is derived from NJ MMIS Shared Data Warehouse Issuance files.
 Effective July 2013 this data query source was converted to the SDW

‡ Child-only cases are defined as families in which no eligible adult receives TANF program benefits, yet the family continues to be headed by at least one of the biological parents, or grandparents, or other appropriate adult

** 'Cases closed' include cases that received a benefit in the prior month, but did not receive any TANF benefit for the report month.

Δ=higher caseload % change

*=lower caseload % change

TABLE 2B :
WFNJ/TANF
PROGRAM

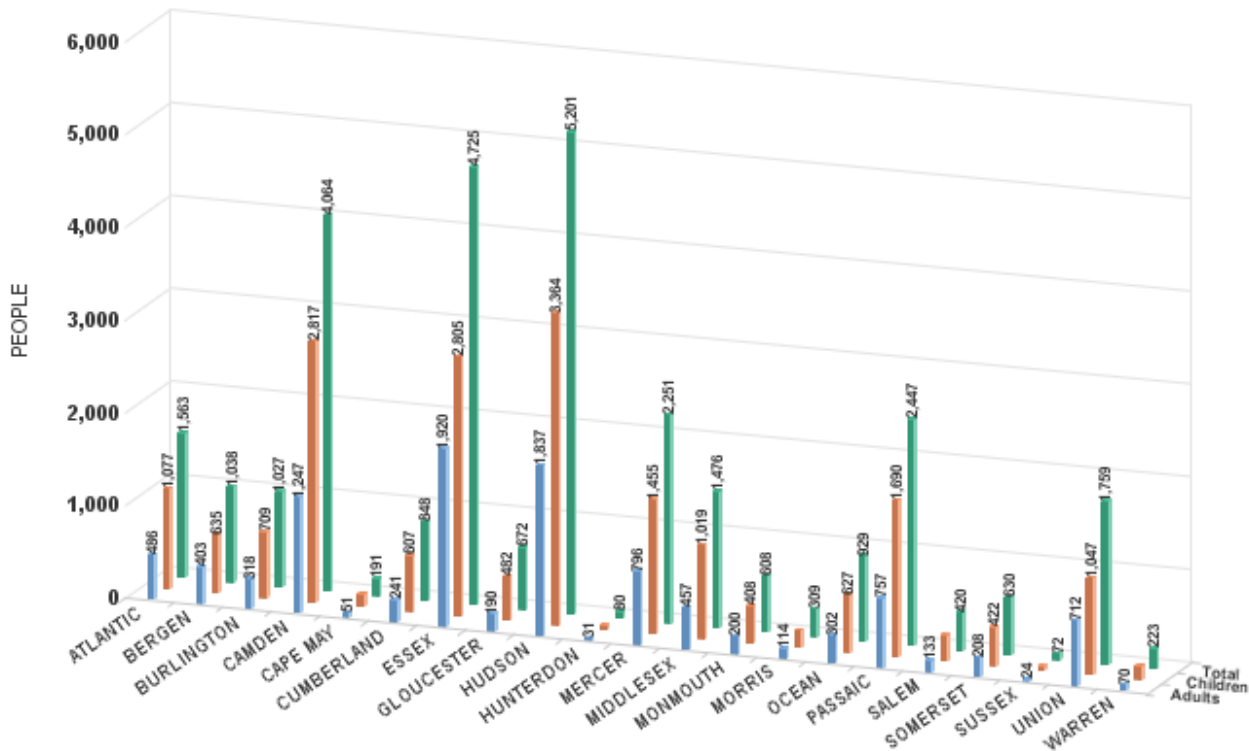
NUMBER OF PARTICIPATING PERSONS, ADULTS, AND CHILDREN
BY COUNTY FOR AUGUST 2023

PERSONS

County	Adults	Children	Child/Adult Ratio	Total Persons	% Chng (1 Yr)	Persons Per Case
ATLANTIC	486	1,077	2.22	1,563	-14.4% *	2.57
BERGEN	403	635	1.58	1,038	18.8% Δ	2.61
BURLINGTON	318	709	2.23	1,027	7.0%	2.70
CAMDEN	1,247	2,817	2.26	4,064	-1.4%	2.69
CAPE MAY	51	140	2.75	191	-6.8%	2.69
CUMBERLAND	241	607	2.52	848	7.1%	2.88
ESSEX	1,920	2,805	1.46	4,725	34.0% Δ	2.79
GLOUCESTER	190	482	2.54	672	-9.1%	2.64
HUDSON	1,837	3,364	1.83	5,201	10.4%	2.70
HUNTERDON	31	49	1.58	80	-27.9% *	2.58
MERCER	796	1,455	1.83	2,251	10.2%	2.69
MIDDLESEX	457	1,019	2.23	1,476	-1.7%	2.61
MONMOUTH	200	408	2.04	608	3.2%	2.54
MORRIS	114	195	1.71	309	23.6% Δ	2.69
OCEAN	302	627	2.08	929	-3.0%	2.80
PASSAIC	757	1,690	2.23	2,447	-23.0% *	2.69
SALEM	133	287	2.16	420	-10.1%	2.73
SOMERSET	208	422	2.03	630	12.9%	2.69
SUSSEX	24	48	2.00	72	4.3%	2.48
UNION	712	1,047	1.47	1,759	1.6%	2.75
WARREN	70	153	2.19	223	-9.0%	2.72
NJ Total	10,497	20,036	1.91	30,533	3.7%	2.70

Δ=higher caseload % change

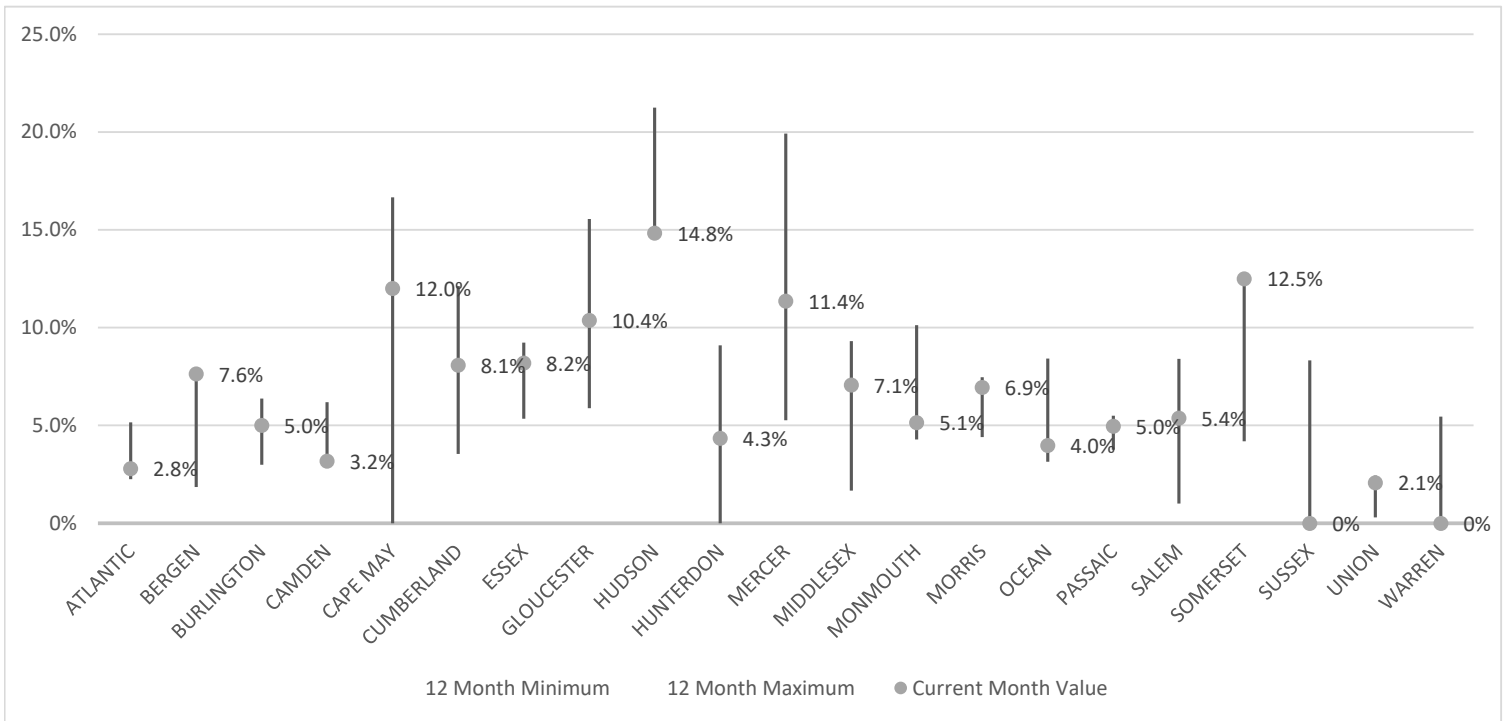
*=lower caseload % change



Data is derived from NJ MMIS Shared Data Warehouse Issuance files.
Effective July 2013 this data query source was converted to the SDW

TABLE 3 :

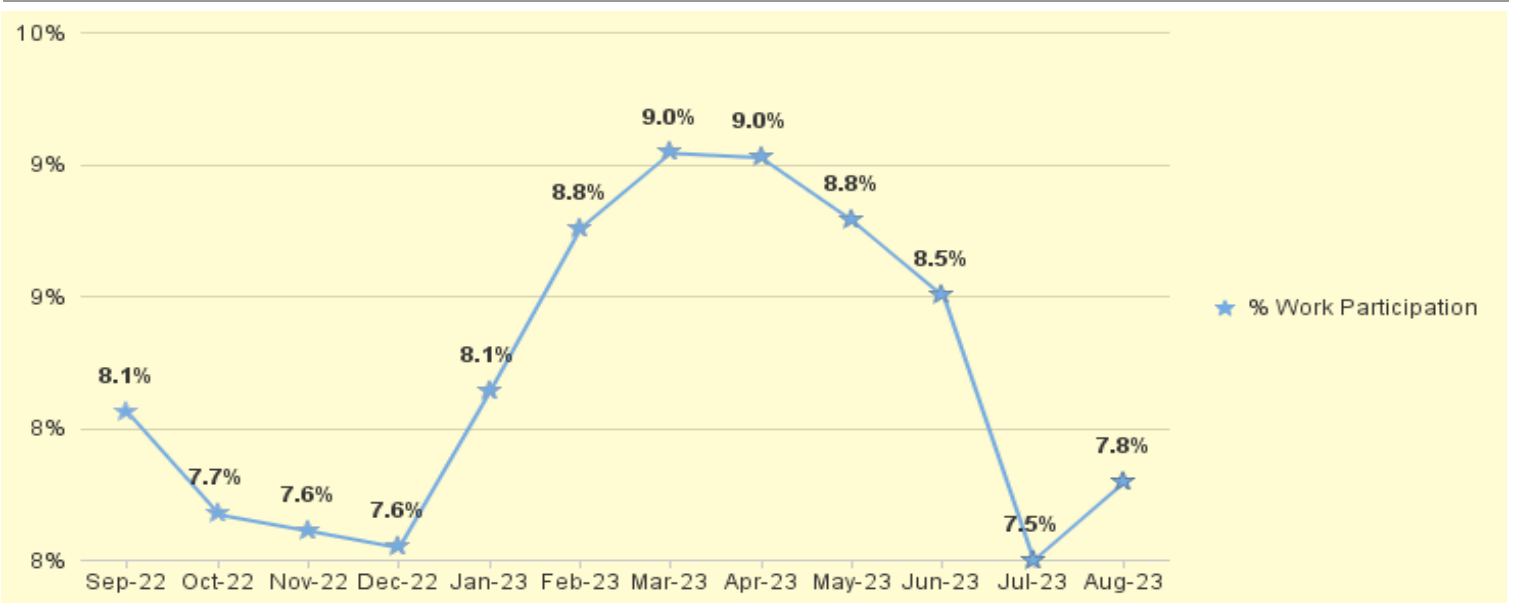
Work Participation Rates Achieved Over 12 Month Period
Ending with AUGUST 2023



Data is derived from NJ MMIS Shared Data Warehouse Issuance files.
Effective July 2013 this data query source was converted to the SDW

TABLE 4 :

WFNJ/TANF Work Participation Rates
for 12-Month Period Ending with AUGUST 2023 Statewide



* The Work Participation rate measures the number of countable Temporary Assistance for Needs Families (TANF) participants based on federal formula. The reported rate is considered to be preliminary until officially calculated by the federal government soon after the close of each federal fiscal year.

TABLE 5 :
NJ SNAP
(FOOD STAMPS)

NUMBER OF PARTICIPATING HOUSEHOLDS, PERSONS, ADULTS
AND CHILDREN FOR AUGUST 2023 (STATEWIDE)
AUGUST 2021 THROUGH AUGUST 2023

		HOUSEHOLDS				PERSONS				Age 60+	People with a disability
		WFNJ/ TANF	Other low income	Total	% CHNG (1 YR)	Adults	Children	TOTAL	% CHNG (1 YR)		
2021	AUG	9,070	442,333	451,403	17.4%	490,577	383,106	873,683	16.7%	127,091	228,513
	SEP	9,561	447,902	457,463	15.8%	497,122	390,345	887,467	15.4%	127,550	229,863
	OCT	9,822	452,139	461,961	14.3%	502,415	388,925	891,340	13.1%	128,700	231,751
	NOV	9,967	455,343	465,310	14.5%	506,476	391,904	898,380	13.6%	129,292	233,050
	DEC	10,138	458,239	468,377	13.8%	510,116	392,757	902,873	12.8%	129,744	238,680
2021	Average	9,677	435,576	445,253		484,197	379,344	863,541		126,517	227,663
2022	JAN	10,418	457,935	468,353	11.7%	509,801	392,651	902,452	10.7%	157,425	236,238
	FEB	10,486	451,733	462,219	9.3%	503,693	385,199	888,892	8.1%	156,540	232,864
	MAR	10,588	455,766	466,354	9.0%	508,290	388,977	897,267	7.9%	158,331	234,617
	APR	10,706	439,659	450,365	4.1%	491,276	375,105	866,381	3.1%	156,504	231,071
	MAY	10,669	423,672	434,341	-0.9%	474,542	360,324	834,866	-1.8%	154,816	227,400
	JUN	10,650	412,366	423,016	-6.1%	462,757	351,378	814,135	-7.9%	154,107	225,452
	JUL	10,910	400,990	411,900	-7.8%	451,428	343,730	795,158	-8.1%	152,494	222,166
	AUG	12,919	421,433	434,352	-3.8%	475,405	401,190	876,595	0.3%	151,643	224,286
	SEP	11,543	391,350	402,893	-11.9%	440,973	348,303	789,276	-11.1%	150,801	220,166
	OCT	11,175	384,016	395,191	-14.5%	433,352	329,837	763,189	-14.4%	152,434	220,723
	NOV	10,978	386,385	397,363	-14.6%	436,125	332,459	768,584	-14.4%	153,574	221,980
	DEC	11,094	393,042	404,136	-13.7%	443,837	340,993	784,830	-13.1%	155,061	227,586
2022	Average	11,011	418,196	429,207		469,290	362,512	831,802		154,511	227,191
2023	JAN	11,120	388,312	399,432	-14.7%	438,140	336,442	774,582	-14.2%	153,633	223,462
	FEB	10,806	388,213	399,019	-13.7%	437,832	336,772	774,604	-12.9%	154,374	223,539
	MAR	12,027	407,914	419,941	-10.0%	460,274	373,470	833,744	-7.1%	156,031	227,136
	APR	11,987	408,628	420,615	-6.6%	460,514	370,535	831,049	-4.1%	156,584	227,434
	MAY	11,026	397,178	408,204	-6.0%	446,453	341,774	788,227	-5.6%	157,317	225,010
	JUN	11,193	399,666	410,859	-2.9%	449,079	343,009	792,088	-2.7%	157,999	225,250
	JUL	11,874	408,109	419,983	2.0%	458,990	363,129	822,119	3.4%	158,680	226,431
	AUG	11,445	398,827	410,272	-5.5%	448,110	340,718	788,828	-10.0%	158,893	224,313
2023	Average To Date	11,435	399,606	411,041		449,924	350,731	800,655		156,689	225,322

This Table is based on those Households & Persons that received SNAP issuances (benefits) during the month

Data is derived from NJ MMIS Shared Data Warehouse.

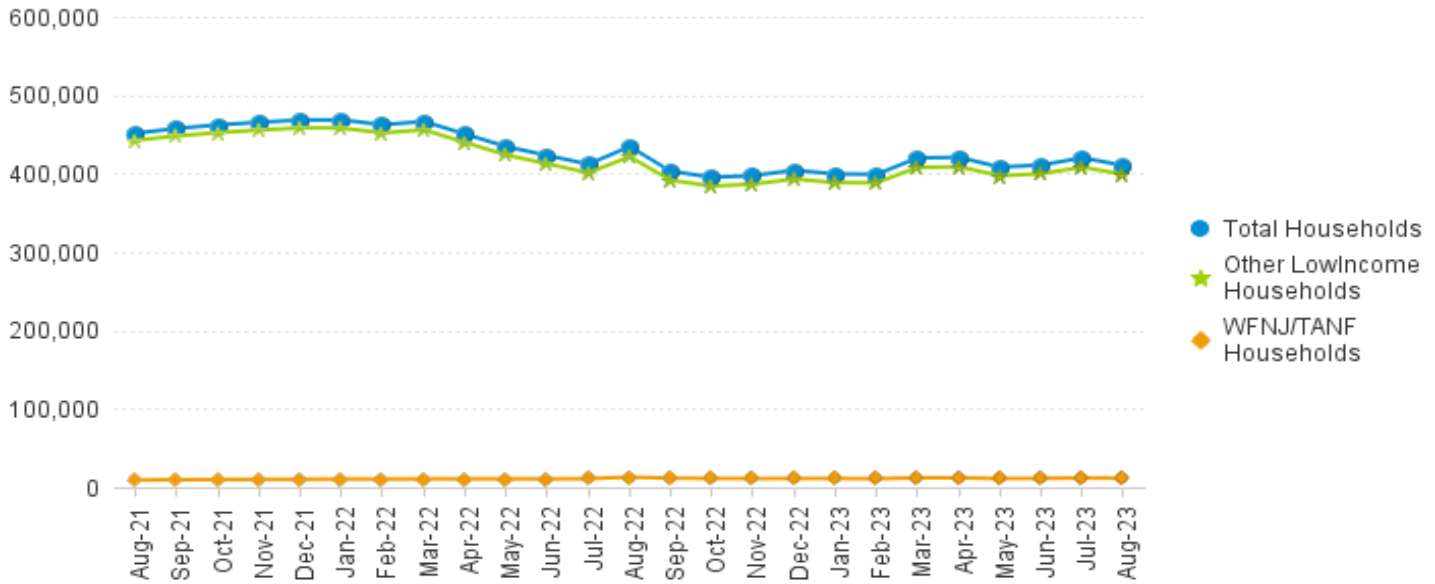
Effective July 2013 this data query source was converted to the SDW.

* Age 60+ and People with a disability columns are independent subsets of total persons. An individual might appear in both columns

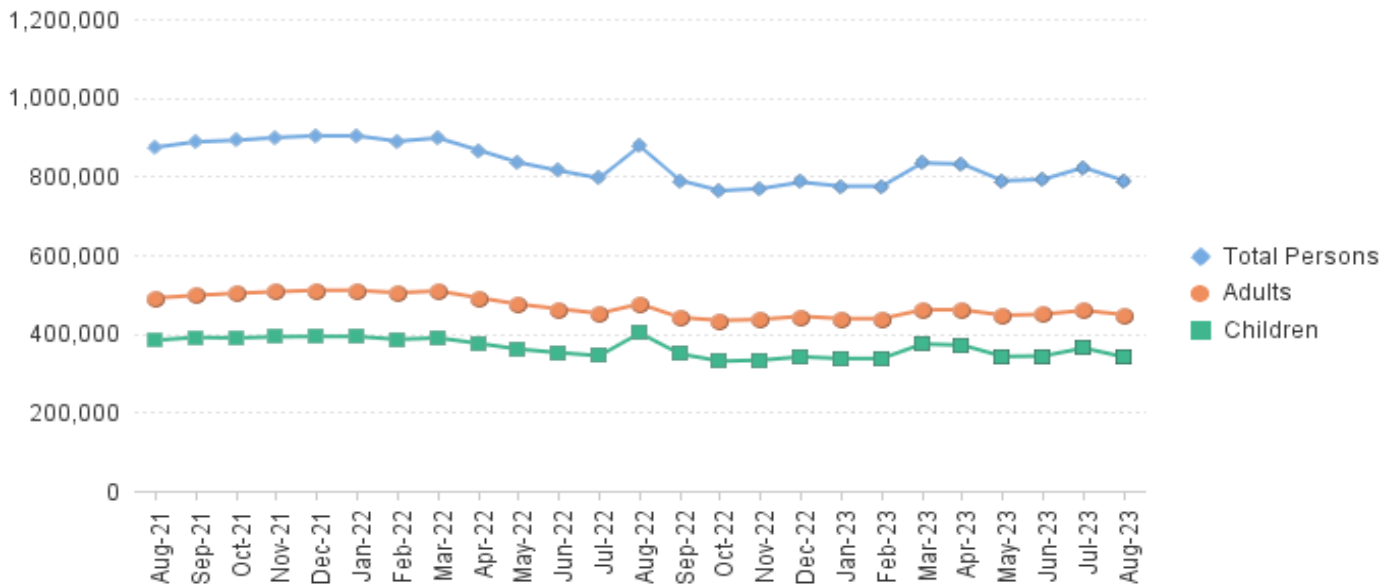
**TABLE 6:
NJ SNAP (FOOD STAMPS)**

**TRENDS FOR PARTICIPATING HOUSEHOLDS & PERSONS
AUGUST 2021 THROUGH AUGUST 2023 (STATEWIDE)**

Statewide NJ SNAP Households: AUGUST 2021 Through AUGUST 2023



Statewide NJ SNAP Persons: AUGUST 2021 Through AUGUST 2023



Data is derived from NJ MMIS Shared Data Warehouse Issuance files.
Effective July 2013 this data query source was converted to the SDW

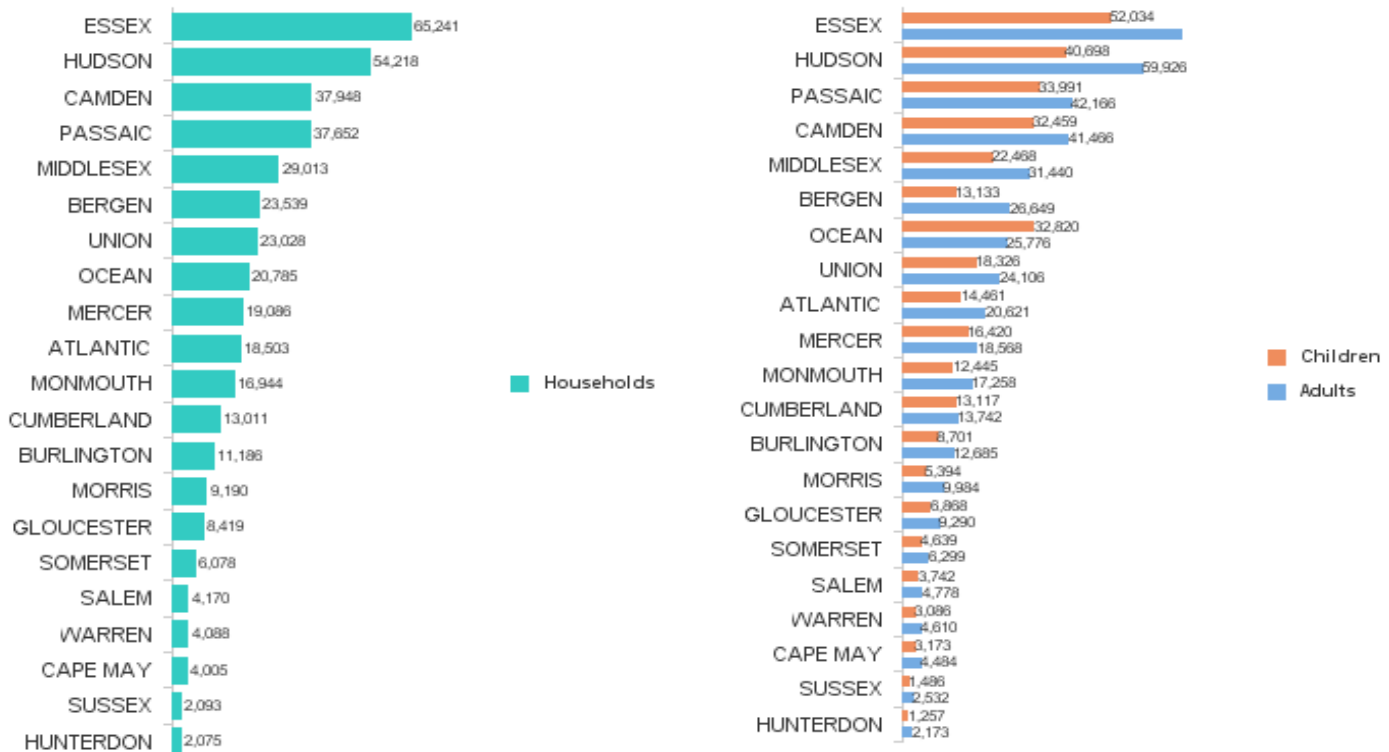
**TABLE 7 :
NJ SNAP
NUMBER OF PARTICIPATING HOUSEHOLDS, PERSONS, ADULTS
AND CHILDREN BY COUNTY FOR AUGUST 2023**

County	HOUSEHOLDS				PERSONS				Age 60+	People with a disability
	WFNJ/ TANF	Other low income	TOTAL	% Chng (1 Yr)	Adults	Children	TOTAL	% Chng (1 Yr)		
ATLANTIC	605	17,898	18,503	-12.1% *	20,621	14,461	35,082	-15.9% *	6,764	10,236
BERGEN	386	23,153	23,539	-0.4% Δ	26,649	13,133	39,782	-4.1% Δ	14,596	16,559
BURLINGTON	427	10,759	11,186	-5.2%	12,685	8,701	21,386	-12.9%	3,845	6,646
CAMDEN	1,405	36,543	37,948	-4.7%	41,466	32,459	73,925	-7.6%	11,189	19,424
CAPE MAY	67	3,938	4,005	-4.3%	4,484	3,173	7,657	-7.9%	1,340	2,240
CUMBERLAND	280	12,731	13,011	-3.9%	13,742	13,117	26,859	-7.9%	3,645	7,020
ESSEX	1,966	63,275	65,241	-10.6% *	69,557	52,034	121,591	-14.0% *	20,606	30,538
GLOUCESTER	240	8,179	8,419	-7.5% *	9,290	6,868	16,158	-12.3%	3,058	5,917
HUDSON	1,815	52,403	54,218	-3.0%	59,926	40,698	100,624	-7.3%	23,008	28,667
HUNTERDON	40	2,035	2,075	1.1% Δ	2,173	1,257	3,430	-1.8% Δ	822	1,210
MERCER	838	18,248	19,086	-4.7%	18,568	16,420	34,988	-8.1%	5,783	10,404
MIDDLESEX	613	28,400	29,013	-6.1%	31,440	22,468	53,908	-10.0%	14,338	17,887
MONMOUTH	270	16,674	16,944	-1.7%	17,258	12,445	29,703	-6.3%	7,048	9,974
MORRIS	135	9,055	9,190	2.2% Δ	9,984	5,394	15,378	-1.2% Δ	5,045	5,627
OCEAN	344	20,441	20,785	-1.5%	25,776	32,820	58,596	-7.3%	7,204	10,931
PASSAIC	886	36,766	37,652	-7.3%	42,166	33,991	76,157	-12.9%	15,689	19,304
SALEM	159	4,011	4,170	-2.4%	4,778	3,742	8,520	-8.3%	1,231	2,393
SOMERSET	231	5,847	6,078	-0.8%	6,299	4,639	10,938	-6.7%	2,686	3,679
SUSSEX	35	2,058	2,093	-5.7%	2,532	1,486	4,018	-10.1%	938	1,536
UNION	617	22,411	23,028	-6.9%	24,106	18,326	42,432	-15.0% *	8,621	11,593
WARREN	86	4,002	4,088	-0.7%	4,610	3,086	7,696	-7.1%	1,437	2,528
NJ TOTAL	11,445	398,827	410,272	-5.5%	448,110	340,718	788,828	-10.0%	158,893	224,313

Δ=higher caseload % change

*=lower caseload % change

**Total NJ SNAP Recipients
AUGUST 2023 by County**



Data is derived from NJ MMIS Shared Data Warehouse.

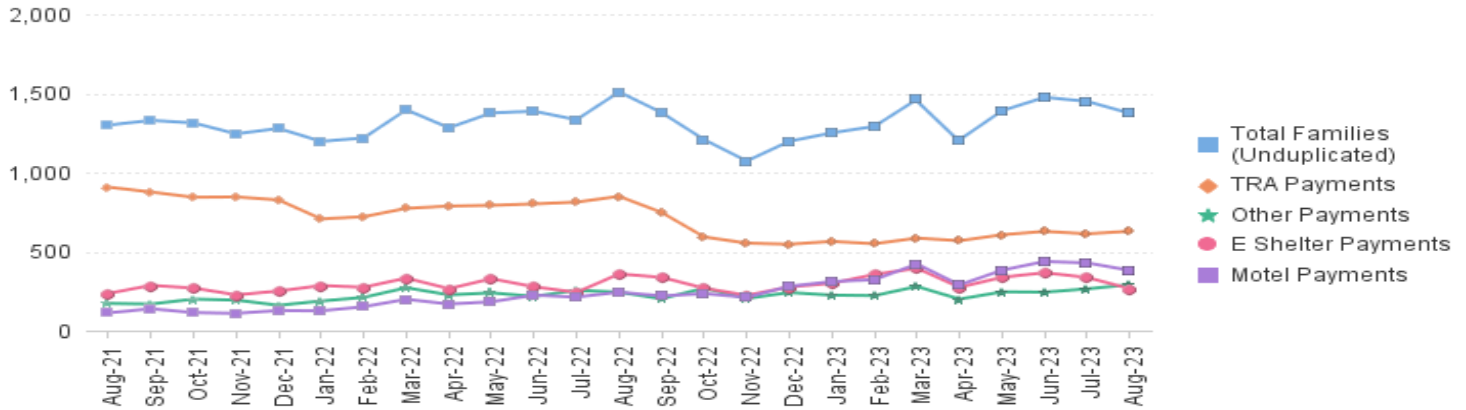
Effective July 2013 this data query source was converted to the SDW.

* Age 60+ and People with a disability columns are independent subsets of total persons. An individual might appear in both columns

TABLE 8 : EMERGENCY ASSISTANCE TOTAL NUMBER OF ELIGIBLE FAMILIES RECEIVING EMERGENCY ASSISTANCE PAYMENTS AUGUST 2021 THROUGH AUGUST 2023 - STATEWIDE (STATEWIDE)

		Total WFNJ/EA Families (Undupl)	% CHNG (1 YR)	Temp Rent Asst. Payments (Undupl)	% CHNG (1 YR)	Motel Housing Payments (Undupl)	% CHNG (1 YR)	Shelter/Transitional Housing Payments (Undupl)	% CHNG (1 YR)	Other WFNJ/EA Payments (Undupl)	% CHNG (1 YR)
2021	AUG	1,299	-20.0%	907	-9.8%	112	-59.9%	235	-22.4%	172	-27.7%
	SEP	1,329	-18.2%	876	-13.9%	138	-46.5%	286	-2.7%	168	-28.2%
	OCT	1,313	-15.7%	843	-15.4%	114	-43.3%	269	-7.9%	199	-19.4%
	NOV	1,244	-7.4%	845	-10.9%	109	-35.9%	226	25.6%	193	-5.4%
	DEC	1,278	-8.4%	826	-12.0%	127	-35.2%	250	21.4%	160	-20.4%
2021	Average	1,343		897		153		243		196	
2022	JAN	1,196	-12.0%	706	-21.4%	125	-34.2%	285	17.8%	187	-11.0%
	FEB	1,218	-5.9%	720	-19.5%	151	-12.2%	274	57.5%	210	-1.4%
	MAR	1,396	-7.7%	773	-19.5%	198	-14.7%	332	20.7%	271	11.1%
	APR	1,282	-9.4%	787	-16.0%	168	18.3%	265	-6.4%	226	6.6%
	MAY	1,376	1.5%	792	-15.8%	182	7.1%	328	56.9%	239	27.8%
	JUN	1,387	-0.4%	801	-15.1%	224	34.1%	277	13.5%	216	7.5%
	JUL	1,333	0.4%	812	-9.0%	212	30.9%	242	6.1%	255	34.9%
	AUG	1,509	16.2%	849	-6.4%	243	117.0%	358	52.3%	243	41.3%
	SEP	1,378	3.7%	747	-14.7%	219	58.7%	337	17.8%	201	19.6%
	OCT	1,207	-8.1%	592	-29.8%	234	105.3%	268	-0.4%	269	35.2%
	NOV	1,072	-13.8%	553	-34.6%	210	92.7%	223	-1.3%	203	5.2%
	DEC	1,197	-6.3%	546	-33.9%	280	120.5%	276	10.4%	241	50.6%
2022	Average	1,296		723		204		289		230	
2023	JAN	1,250	4.5%	564	-20.1%	310	148.0%	299	4.9%	224	19.8%
	FEB	1,291	6.0%	549	-23.8%	322	113.2%	355	29.6%	221	5.2%
	MAR	1,462	4.7%	585	-24.3%	421	112.6%	394	18.7%	279	3.0%
	APR	1,206	-5.9%	568	-27.8%	289	72.0%	274	3.4%	199	-11.9%
	MAY	1,390	1.0%	606	-23.5%	382	109.9%	337	2.7%	245	2.5%
	JUN	1,475	6.3%	627	-21.7%	437	95.1%	366	32.1%	243	12.5%
	JUL	1,449	8.7%	612	-24.6%	428	101.9%	336	38.8%	264	3.5%
	AUG	1,374	-8.9%	628	-26.0%	381	56.8%	265	-26.0%	290	19.3%
2023	Average To Date	1,362		592		371		328		246	

NJ STATEWIDE Families Receiving Emergency Assistance AUGUST 2021 THROUGH AUGUST 2023



WFNJ/EA data is derived from NJ MMIS Shared Data Warehouse. Effective July 2013 this data query source was converted to the SDW.

* Effective Feb '11 Transitional Housing Payments were removed from 'Other EA Payments' and added to 'Shelter Payments'.

TABLE 9 :
EMERGENCY ASSISTANCE (BY COUNTY) **TOTAL NUMBER OF ELIGIBLE FAMILIES RECEIVING EMERGENCY ASSISTANCE PAYMENTS BY COUNTY (UNDUPLICATED CASES) FOR AUGUST 2023**

County	TOTAL WFNJ/EA Families (Undupl)	% CHNG From AUG 22	Temp Rent Asst. Payments (Undupl)	Motel Housing Payments (Undupl)	Shelter/Transitional Housing Payments (Undupl)	Other WFNJ/EA Payments (Undupl)	SSI Receipts Receiving EA **
ATLANTIC	41	28.1%	22	6	1	17	52
BERGEN	33	-26.7%	16	3	12	5	34
BURLINGTON	153	35.4% Δ	21	83	61	9	78
CAMDEN	28	-36.4% *	11	14	1	3	9
CAPE MAY	20	53.8% Δ	6	14	0	0	9
CUMBERLAND	5	0%	0	0	5	0	2
ESSEX	91	-33.6%	31	0	48	23	16
GLOUCESTER	22	22.2%	0	4	10	13	9
HUDSON	283	10.5%	203	51	26	46	73
HUNTERDON	7	-36.4% *	0	1	0	6	3
MERCER	175	4.8%	86	56	1	50	83
MIDDLESEX	92	-21.4%	33	33	11	28	50
MONMOUTH	42	10.5%	0	16	32	4	25
MORRIS	18	125.0% Δ	5	11	0	5	18
OCEAN	39	-45.1% *	21	16	0	8	18
PASSAIC	142	-34.3%	106	4	22	25	31
SALEM	5	25.0%	0	0	3	3	2
SOMERSET	65	-3.0%	38	23	0	22	50
SUSSEX	3	-25.0%	0	1	2	0	2
UNION	97	-29.7%	25	38	29	17	24
WARREN	13	30.0%	4	7	1	6	6
NJ Total	1,374	-8.9%	628	381	265	290	594

Δ=higher caseload % change

*=lower caseload % change

** SSI-EA includes pay codes 22 and 24, data is derived from NJ Division of Family Development FAMIS Report #FM430-03A

WFNJ/EA data is derived from NJ MMIS Shared Data Warehouse.

Effective July 2013 this data query source was converted to the SDW.

Number WFNJ Families Receiving EA by County AUGUST 2023

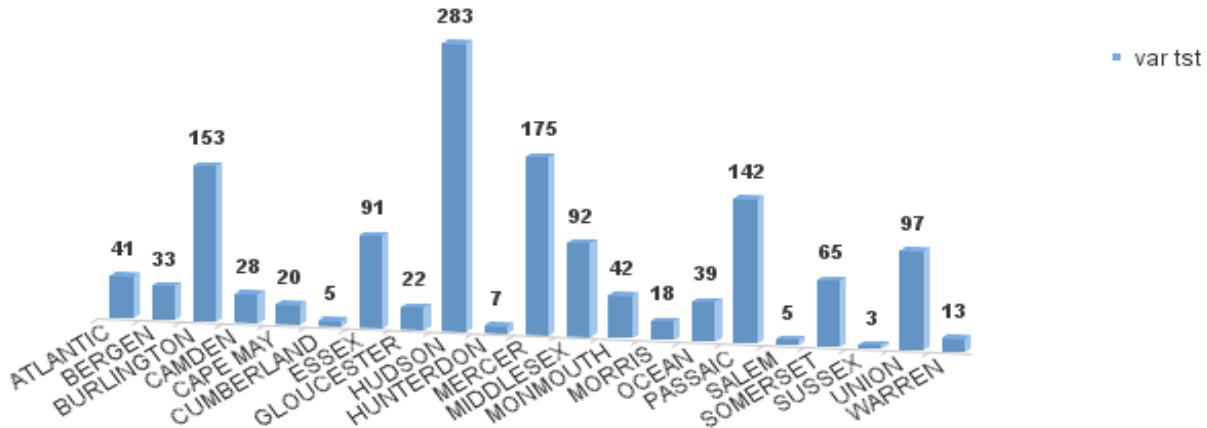


TABLE 10: GENERAL ASSISTANCE PROGRAM
NUMBER OF EMPLOYABLE AND UNEMPLOYABLE RECIPIENTS AND EMERGENCY ASSISTANCE PAYMENTS - STATEWIDE
AUGUST 2021 THROUGH AUGUST 2023

PROGRAM	Total Cases						Emergency Assistance Cases			
	Employable	% Chng (1 Yr)	Unemployable	% Chng (1 Yr)	Total	% Chng (1 Yr)	Temporary Rental Assistance	Other GA-EA	Total	% Chng (1 Yr)
2021 AUG	9,120	12.3%	3,982	-24.3%	13,102	-2.1%	753	1,091	1,844	-10.6%
SEP	9,045	10.6%	3,914	-23.7%	12,959	-2.6%	787	1,114	1,901	-12.9%
OCT	9,309	14.1%	3,875	-22.3%	13,184	0.3%	757	1,061	1,818	-7.3%
NOV	9,668	17.5%	3,853	-20.1%	13,521	3.6%	711	1,011	1,722	0.2%
DEC	10,040	17.6%	3,855	-17.8%	13,895	5.0%	742	1,071	1,813	-6.7%
2021 AVERAGE	9,342		4,148		13,499		792	1,076	1,868	
2022 JAN	10,239	14.0%	3,801	-16.5%	14,040	3.8%	677	947	1,624	-22.2%
FEB	10,687	17.6%	3,812	-13.5%	14,499	7.4%	727	1,126	1,853	2.9%
MAR	11,462	19.0%	3,870	-12.5%	15,332	9.1%	719	1,399	2,118	-4.8%
APR	11,810	24.3%	3,823	-10.8%	15,633	13.4%	742	1,196	1,938	-4.8%
MAY	12,039	25.0%	3,805	-13.9%	15,844	12.8%	750	1,152	1,902	45.2%
JUN	12,306	36.6%	3,858	-6.6%	16,164	22.0%	782	1,250	2,032	6.8%
JUL	12,451	37.0%	3,862	-5.3%	16,313	23.9%	758	1,196	1,954	0.0%
AUG	9,785	7.3%	3,342	-16.1%	13,127	0.2%	691	1,396	2,087	13.2%
SEP	8,370	-7.5%	3,225	-17.6%	11,595	-10.5%	635	1,261	1,896	-0.3%
OCT	7,829	-15.9%	3,291	-15.1%	11,120	-15.7%	574	1,184	1,758	-3.3%
NOV	7,313	-24.4%	3,326	-13.7%	10,639	-21.3%	602	1,040	1,642	-4.6%
DEC	6,950	-30.8%	3,413	-11.5%	10,363	-25.4%	599	1,157	1,756	-3.1%
2022 AVERAGE	10,103		3,619		13,722		688	1,192	1,880	
2023 JAN	6,760	-34.0%	3,447	-9.3%	10,207	-27.3%	590	1,112	1,702	4.8%
FEB	6,563	-38.6%	3,408	-10.6%	9,971	-31.2%	570	1,170	1,740	-6.1%
MAR	6,607	-42.4%	3,555	-8.1%	10,162	-33.7%	586	1,251	1,837	-10.8%
APR	6,569	-44.4%	3,573	-6.5%	10,142	-35.1%	623	1,158	1,781	-8.1%
MAY	6,567	-45.5%	3,686	-3.1%	10,253	-35.3%	634	1,267	1,901	-0.1%
JUN	6,629	-46.1%	3,782	-2.0%	10,411	-35.6%	633	1,155	1,788	-12.0%
JUL	6,971	-44.0%	3,754	-2.8%	10,725	-34.3%	605	1,097	1,702	-12.9%
AUG	7,840	-19.9%	3,817	14.2%	11,657	-11.2%	602	1,268	1,870	-10.4%
2023 AVERAGE TO DATE	6,813		3,628		10,441		605	1,185	1,790	

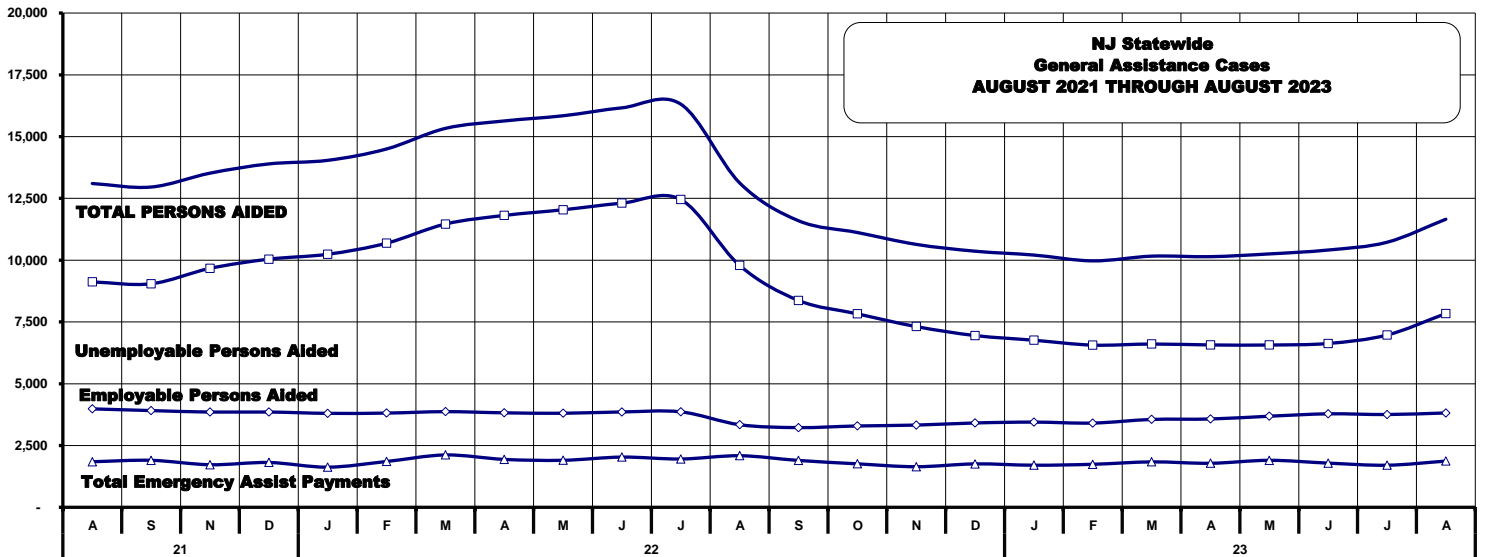


TABLE 11: EMPLOYABLE AND UNEMPLOYABLE CASES AND EMERGENCY ASSISTANCE CASES RECEIVING PAYMENTS BY COUNTY AUGUST 2023

PROGRAM	Total Cases						Emergency Assistance Cases				
	Employable	% Chng (1 Yr)	Unemployable	% Chng (1 Yr)	Total	% Chng (1 Yr)	Temporary Rental Assistance	Other GA-EA	Total	% Chng (1 Yr)	
ATLANTIC	831	-25.9%	160	-0.6%	991	-22.7%	111	59	170	39.3%	Δ
BERGEN	276	-23.1%	250	27.6%	526	-5.2%	64	26	90	-8.2%	
BURLINGTON	314	-19.1%	178	36.9%	492	-5.0%	8	85	93	-19.1%	
CAMDEN	1,222	-26.3%	459	4.8%	1,681	-19.8%	28	47	75	-51.6%	*
CAPE MAY	108	-5.3%	37	-15.9%	145	-8.2%	7	39	46	-2.1%	
CUMBERLAND	260	-1.1%	168	50.0%	428	14.1%	0	7	7	75.0%	Δ
ESSEX	868	-2.8%	252	25.4%	1,120	2.4%	14	180	194	-22.7%	
GLOUCESTER	138	-28.9%	125	17.9%	263	-12.3%	1	25	26	1200.0%	Δ
HUDSON	931	-16.6%	310	4.7%	1,241	-12.1%	102	22	124	-25.3%	
HUNTERDON	85	-40.1%	55	-14.1%	140	-32.0%	10	18	28	-33.3%	*
MERCER	418	-15.4%	248	5.1%	666	-8.8%	39	51	90	4.7%	
MIDDLESEX	257	-46.6%	344	2.1%	601	-26.5%	54	105	159	-15.9%	
MONMOUTH	219	-20.9%	214	20.9%	433	-4.6%	2	86	88	-22.8%	
MORRIS	182	-15.7%	164	6.5%	346	-6.5%	28	63	91	5.8%	
OCEAN	280	-32.0%	227	11.8%	507	-17.6%	23	54	77	-10.5%	
PASSAIC	352	-22.8%	168	5.0%	520	-15.6%	18	27	45	-18.2%	
SALEM	73	-50.0%	61	52.5%	134	-28.0%	1	4	5	-28.6%	*
SOMERSET	231	10.0%	76	55.1%	307	18.5%	44	89	133	26.7%	Δ
SUSSEX	16	-69.2%	34	30.8%	50	-35.9%	1	3	4	-60.0%	*
UNION	703	3.1%	222	42.3%	925	10.4%	38	262	300	-1.3%	Δ
WARREN	76	-31.5%	65	16.1%	141	-15.6%	9	16	25	-41.9%	*
NJ TOTAL	7,840	-19.9%	3,817	14.2%	11,657	-11.2%	602	1,268	1,870	-10.4%	

Δ= ↑ Caseload %

* = ↓ Caseload %

**TABLE 12:
OFFICE OF
CHILD SUPPORT
SERVICES**

**OFFICE OF CHILD SUPPORT SERVICES
QUARTERLY PERFORMANCE REPORT
STATE SUMMARY
TITLE IV-D SOURCE COLLECTION REPORT
Comparison of Quarter-3 (FFY 2022 vs. FFY 2023)**

COLLECTION SOURCE	TOTAL 4/1/2022 - 6/30/2022	% OF TOTAL COLLECTIONS	TOTAL 4/1/2023 - 6/30/2023	% OF TOTAL COLLECTIONS	DOLLAR CHANGE	% CHANGE
FEDERAL TAX	\$17,731,625	6.35%	\$12,318,445	4.53%	\$ (5,413,180)	-30.53%
STATE TAX	\$2,668,025	0.96%	\$2,183,230	0.80%	\$ (484,795)	-18.17%
UIB	\$5,421,741	1.94%	\$6,401,604	2.35%	\$ 979,863	18.07%
INC WITHHOLD	\$185,627,039	66.46%	\$183,958,372	67.63%	\$ (1,668,667)	-0.90%
FROM OTHER STATES	\$10,523,803	3.77%	\$10,404,749	3.83%	\$ (119,054)	-1.13%
ADMIN ENFORCEMENT	\$4,052,911	1.45%	\$4,394,993	0.02%	\$ 342,082	8.44%
OTHER	\$53,297,540	19.08%	\$52,343,617	19.24%	\$ (953,923)	-1.79%
TOTAL COLLECTIONS*	\$279,322,684	100%	\$272,005,010	100%	\$ (7,317,674)	-2.62%
DISBURSED COLLECTIONS**	\$242,148,920		\$234,716,119		\$ (7,432,801)	-3.07%

* Includes collections on both current support and arrears.

** Includes collections on both current support and arrears; also includes money sent to other states.

SOURCE: NJKiDS (Based on Federal Quarterly Report of Collections - OCSE-34A except Disbursed Collections)

Disbursed Collections obtained from Federal Data Report - OCSE-157, which is reported annually to Congress and used in the calculation of incentive dollars earned by each state.

**TABLE 13:
OFFICE OF
CHILD SUPPORT
SERVICES**

**OFFICE OF CHILD SUPPORT SERVICES
STATE SUMMARY
TITLE IV-D PATERNITY ESTABLISHMENT REPORT**

Comparison of August (FFY 2022 vs. FFY 2023)

County	AUGUST 2022			AUGUST 2023			Increase or Decrease (-) from FFY 2022 to FFY 2023
	Total Children Born Out of Wedlock*	Number of Paternities Established	Percent of Paternities Established	Total Children Born Out of Wedlock*	Number of Paternities Established	Percent of Paternities Established	
Atlantic	5,168	5,169	100.0%	4,726	4,723	99.9%	-0.1%
Bergen	2,578	2,561	99.3%	2,428	2,387	98.3%	-1.0%
Burlington	3,982	3,899	97.9%	3,575	3,519	98.4%	0.5%
Camden	13,012	12,783	98.2%	12,024	11,771	97.9%	-0.3%
Cape May	970	965	99.5%	862	868	100.7%	1.2%
Cumberland	5,664	5,606	99.0%	5,232	5,180	99.0%	0.0%
Essex	19,823	19,010	95.9%	18,262	17,468	95.7%	-0.2%
Gloucester	3,506	3,479	99.2%	3,196	3,174	99.3%	0.1%
Hudson	8,034	7,794	97.0%	7,365	7,162	97.2%	0.2%
Hunterdon	188	189	100.5%	151	154	102.0%	1.5%
Mercer	5,476	5,322	97.2%	4,903	4,786	97.6%	0.4%
Middlesex	5,215	5,111	98.0%	4,734	4,660	98.4%	0.4%
Monmouth	3,833	3,742	97.6%	3,383	3,336	98.6%	1.0%
Morris	977	987	101.0%	849	847	99.8%	-1.3%
Ocean	3,992	3,936	98.6%	3,689	3,615	98.0%	-0.6%
Passaic	8,037	7,823	97.3%	7,241	7,116	98.3%	0.9%
Salem	2,366	2,274	96.1%	2,283	2,206	96.6%	0.5%
Somerset	1,089	1,073	98.5%	967	957	99.0%	0.4%
Sussex	417	422	101.2%	385	390	101.3%	0.1%
Union	8,849	8,470	95.7%	8,314	8,007	96.3%	0.6%
Warren	618	621	100.5%	546	553	101.3%	0.8%
NJ TOTALS	103,794	101,236	97.5%	95,115	92,879	97.6%	0.1%

SOURCE: NJKIDS (Based on Federal Performance Measures - OCSE-157)

* Information on Out of Wedlock Births obtained from NJ Bureau of Vital Statistics

**TABLE 14:
OFFICE OF
CHILD SUPPORT
SERVICES**

**OFFICE OF CHILD SUPPORT SERVICES
STATE SUMMARY
TITLE IV-D REPORT OF CASES WITH ORDERS
Comparison of August (FFY 2022 vs. FFY 2023)**

County	AUGUST 2022			AUGUST 2023			Increase or Decrease (-) from FFY 2022 to FFY 2023
	Total Cases	Cases with Orders	% of Cases with Orders	Total Cases	Cases with Orders	% of Cases with Orders	
Atlantic	9,947	9,187	92.4%	9,484	8,682	91.5%	-0.8%
Bergen	10,171	9,898	97.3%	9,757	9,455	96.9%	-0.4%
Burlington	11,231	10,415	92.7%	10,865	9,869	90.8%	-1.9%
Camden	24,499	23,057	94.1%	23,631	22,026	93.2%	-0.9%
Cape May	2,538	2,427	95.6%	2,379	2,266	95.3%	-0.4%
Cumberland	10,382	9,855	94.9%	10,028	9,458	94.3%	-0.6%
Essex	34,149	29,740	87.1%	32,843	28,559	87.0%	-0.1%
Gloucester	8,892	8,443	95.0%	8,338	7,977	95.7%	0.7%
Hudson	17,107	15,258	89.2%	16,512	14,683	88.9%	-0.3%
Hunterdon	1,184	1,107	93.5%	1,076	1,010	93.9%	0.4%
Mercer	11,355	10,156	89.4%	10,774	9,644	89.5%	0.1%
Middlesex	14,929	13,841	92.7%	14,443	13,251	91.7%	-1.0%
Monmouth	10,981	10,342	94.2%	10,215	9,578	93.8%	-0.4%
Morris	4,913	4,754	96.8%	4,641	4,497	96.9%	0.1%
Ocean	12,373	11,871	95.9%	11,767	11,277	95.8%	-0.1%
Passaic	16,153	14,235	88.1%	15,573	13,746	88.3%	0.1%
Salem	3,605	3,395	94.2%	3,467	3,273	94.4%	0.2%
Somerset	3,851	3,562	92.5%	3,744	3,346	89.4%	-3.1%
Sussex	2,287	2,231	97.6%	2,190	2,148	98.1%	0.5%
Union	15,840	15,030	94.9%	15,235	14,337	94.1%	-0.8%
Warren	2,223	2,124	95.5%	2,121	2,007	94.6%	-0.9%
NJ TOTALS	228,610	210,928	92.3%	219,083	201,089	91.8%	-0.5%

SOURCE: NJKIDS (Based on Federal Performance Measures - OCSE-157)

**TABLE 15:
OFFICE OF
CHILD SUPPORT
SERVICES**

**OFFICE OF CHILD SUPPORT SERVICES
STATE SUMMARY
TITLE IV-D COLLECTIONS ON CURRENT SUPPORT**
Comparison of August (FFY 2022 vs. FFY 2023)

County	AUGUST 2022			AUGUST 2023			Increase or Decrease (-) from FFY 2022 to FFY 2023
	Total Current Support Due	Total Current Support Distributed	Total Collection Rate	Total Current Support Due	Total Current Support Distributed	Total Collection Rate	
Atlantic	\$3,468,668	\$2,189,783	63.1%	\$3,460,350	\$2,195,496	63.4%	0.3%
Bergen	\$7,489,777	\$5,597,048	74.7%	\$7,210,826	\$5,364,870	74.4%	-0.3%
Burlington	\$5,056,940	\$3,411,880	67.5%	\$5,045,059	\$3,444,413	68.3%	0.8%
Camden	\$7,230,182	\$4,248,514	58.8%	\$7,311,206	\$4,253,170	58.2%	-0.6%
Cape May	\$977,449	\$660,563	67.6%	\$949,989	\$657,955	69.3%	1.7%
Cumberland	\$2,795,595	\$1,623,258	58.1%	\$2,882,646	\$1,656,608	57.5%	-0.6%
Essex	\$9,670,052	\$5,647,313	58.4%	\$9,777,119	\$5,645,244	57.7%	-0.7%
Gloucester	\$3,706,999	\$2,444,367	65.9%	\$3,673,651	\$2,408,907	65.6%	-0.4%
Hudson	\$6,678,870	\$4,349,530	65.1%	\$6,824,804	\$4,353,457	63.8%	-1.3%
Hunterdon	\$1,017,661	\$854,034	83.9%	\$926,047	\$783,073	84.6%	0.6%
Mercer	\$3,660,245	\$2,308,848	63.1%	\$3,763,683	\$2,379,562	63.2%	0.1%
Middlesex	\$6,766,091	\$4,566,252	67.5%	\$6,915,440	\$4,722,602	68.3%	0.8%
Monmouth	\$6,127,954	\$4,476,116	73.0%	\$5,778,029	\$4,172,281	72.2%	-0.8%
Morris	\$3,863,696	\$2,861,488	74.1%	\$3,754,145	\$2,780,841	74.1%	0.0%
Ocean	\$5,809,790	\$4,121,496	70.9%	\$5,776,752	\$4,057,515	70.2%	-0.7%
Passaic	\$5,800,897	\$3,649,315	62.9%	\$5,904,776	\$3,666,815	62.1%	-0.8%
Salem	\$1,006,423	\$600,284	59.6%	\$1,022,105	\$596,991	58.4%	-1.2%
Somerset	\$2,528,376	\$2,032,804	80.4%	\$2,397,500	\$1,928,124	80.4%	0.0%
Sussex	\$1,567,796	\$1,175,816	75.0%	\$1,511,402	\$1,146,634	75.9%	0.9%
Union	\$6,427,274	\$4,335,435	67.5%	\$6,583,946	\$4,300,077	65.3%	-2.1%
Warren	\$1,104,575	\$819,078	74.2%	\$1,095,523	\$825,282	75.3%	1.2%
NJ TOTALS	\$92,755,308	\$61,973,222	66.8%	\$92,564,997	\$61,339,917	66.3%	-0.5%

SOURCE: NJKIDS (Based on Federal Performance Measures - OCSE-157)

**TABLE 16:
OFFICE OF
CHILD SUPPORT
SERVICES**

**OFFICE OF CHILD SUPPORT SERVICES
STATE SUMMARY
TITLE IV-D CASES ARREARS COLLECTION REPORT**

Comparison of August (FFY 2022 vs. FFY 2023)

County	AUGUST 2022			AUGUST 2023			Increase or Decrease (-) from FFY 2022 to FFY 2023
	Total Cases with Arrears	Total Amount Collected	Average Arrears Collection per Case	Total Cases with Arrears	Total Amount Collected	Average Arrears Collection per Case	
Atlantic	6,128	\$680,090	\$110.98	5,965	\$604,673	\$101.37	-\$9.61
Bergen	6,475	\$1,015,223	\$156.79	6,259	\$1,380,868	\$220.62	\$63.83
Burlington	6,813	\$978,803	\$143.67	6,684	\$846,471	\$126.64	-\$17.03
Camden	14,001	\$1,712,894	\$122.34	13,790	\$1,547,794	\$112.24	-\$10.10
Cape May	1,649	\$193,137	\$117.12	1,560	\$196,150	\$125.74	\$8.61
Cumberland	6,081	\$654,284	\$107.59	6,066	\$764,686	\$126.06	\$18.47
Essex	18,316	\$2,449,726	\$133.75	17,805	\$2,337,725	\$131.30	-\$2.45
Gloucester	5,556	\$653,154	\$117.56	5,365	\$701,377	\$130.73	\$13.17
Hudson	10,375	\$1,214,573	\$117.07	10,168	\$1,168,042	\$114.87	-\$2.19
Hunterdon	685	\$126,374	\$184.49	647	\$221,491	\$342.34	\$157.85
Mercer	6,770	\$837,090	\$123.65	6,807	\$1,120,895	\$164.67	\$41.02
Middlesex	8,996	\$1,196,049	\$132.95	9,029	\$1,518,081	\$168.13	\$35.18
Monmouth	6,678	\$1,012,673	\$151.64	6,334	\$1,128,453	\$178.16	\$26.51
Morris	3,156	\$578,054	\$183.16	3,095	\$530,075	\$171.27	-\$11.89
Ocean	7,410	\$950,291	\$128.24	7,229	\$1,100,234	\$152.20	\$23.95
Passaic	9,489	\$1,325,560	\$139.69	9,442	\$1,078,163	\$114.19	-\$25.51
Salem	2,064	\$211,641	\$102.54	2,018	\$208,487	\$103.31	\$0.77
Somerset	2,324	\$510,613	\$219.71	2,243	\$385,709	\$171.96	-\$47.75
Sussex	1,440	\$200,324	\$139.11	1,395	\$226,344	\$162.25	\$23.14
Union	9,693	\$1,390,426	\$143.45	9,483	\$1,245,377	\$131.33	-\$12.12
Warren	1,392	\$181,183	\$130.16	1,359	\$214,220	\$157.63	\$27.47
NJ TOTALS	135,491	\$18,072,162	\$133.38	132,743	\$18,525,315	\$139.56	\$6.18

SOURCE: OCSE-157 Child Support Enforcement Annual Data Report

Table 17**WORK FIRST NEW JERSEY STATISTICAL SUMMARY****WFNJ****AUGUST 2023**

COUNTY	EMPLOYMENT DIRECTED ACTIVITIES			EMPLOYED OPEN (WFNJ RECIPIENT)	SUPPORT SERVICES ON ACTIVE CASE		CLOSED FOR EMPLOYMENT THIS MONTH	POST ASSISTANCE CHILD CARE
	CWEP	ALL OTHER TRAINING	JOB SEARCH		CHILD CARE	TRAINING REL. EXPENSES		
ATLANTIC	1	56	9	26	11	38	1	19
BERGEN	46	4	62	15	55	12	11	4
BURLINGTON	117	9	111	20	32	10	3	9
CAMDEN	14	158	7	51	72	1	17	1
CAPE MAY	0	10	2	3	3	1	0	5
CUMBERLAND	4	25	22	18	15	37	3	5
ESSEX	70	159	10	124	97	192	12	60
GLOUCESTER	1	8	1	25	13	3	4	8
HUDSON	0	329	85	102	206	117	21	21
HUNTERDON	0	0	0	0	1	0	0	2
MERCER	75	151	4	52	104	68	14	52
MIDDLESEX	0	38	54	31	51	4	8	5
MONMOUTH	0	9	6	21	19	7	4	30
MORRIS	0	2	0	3	1	0	1	1
OCEAN	0	124	0	3	11	12	4	12
PASSAIC	20	71	0	16	33	19	17	6
SALEM	2	8	6	7	8	5	5	0
SOMERSET	24	15	12	6	32	24	3	0
SUSSEX	0	0	0	2	0	0	2	1
UNION	34	35	1	13	25	0	7	0
WARREN	0	6	0	1	2	0	4	3
STATE TOTAL	408	1,217	392	539	791	550	141	244

Data is derived from NJ Division of Family Development's FAMIS Reports RM064-01 & RM703-51, AdHoc Reports 5549 & 5598 and SDW Report WR00022WZ_CC

**DIVISION OF FAMILY DEVELOPMENT CURRENT PROGRAM STATISTICS
AUGUST 2023**

ACRONYMS

EMERGENCY ASSISTANCE (EA) - Payments to those eligible for WFNJ/TANF or WFNJ/GA, authorized during the 30 consecutive days immediately following the emergency (defined as a substantial loss of shelter, food, clothing, or household furnishings by fire, flood or other similar disaster) or if eligible individual or family is in an imminent or actual state of homelessness.

NJ SNAP - Formerly the Food Stamp Program, now known as NJ SNAP (NJ Supplemental Nutrition Assistance Program) authorized by Congress as a nutritional supplement program to provide low income households with more food of greater variety and better nutrition. Program eligibility is based on household income, resources, and expenses for medical, shelter, and dependent care. CWA staff refers certain recipients to the New Jersey Department of Labor for participation in the Food Stamp Employment and Training Program.

FAMIS: Family Assistance Management Information System

GAAS: General Assistance Automated System

NJKiDS: New Jersey Kids Deserve Support (Child Support Information Management System)

NJ MMIS SHARED DATA WAREHOUSE: The Shared Data Warehouse (SDW) is the repository for New Jersey's DFD and Medicaid data. Since 2003, OptumInsight has administered the SDW and provided access to the data through a reporting tool known as Business Objects.

OMEGA: Online Management of Economic Goal Achievement

SSI-EA: Supplemental Security Income-Emergency Assistance

WFNJ: Work First New Jersey - Fully implemented July 1, 1997, this is New Jersey's welfare reform program which responds to the requirements of the Federal Personal Responsibility and Work Opportunity Reconciliation Act (**PRWORA**) of 1996. PRWORA established Temporary Assistance for Needy Families (**TANF**) as the replacement for AFDC cash assistance. WFNJ includes two segments, **WFNJ/TANF** for families with children, and **WFNJ/GA** (General Assistance) for single adults and couples without dependent children. WFNJ emphasizes achieving self-sufficiency and limits lifetime receipt of financial assistance to a total of five years.

**DIVISION OF FAMILY DEVELOPMENT CURRENT PROGRAM STATISTICS
AUGUST 2023**

EXPLANATORY NOTES

The Department of Human Services Division of Family Development provides basic income and an opportunity to achieve self-sufficiency for individuals and families served by the Division's programs. The Division provides leadership, direction and supervision to those public agencies responsible for administering those programs and plans for and develops policies to promote self-sufficiency.

WFNJ STATISTICAL SUMMARY (TABLE 17)

Employment Directed Activities (EDA) - From Activities Summary Report (OMEGA report # RM064). Unduplicated count of persons participating in Community Work Experience Program (CWEP), All Other Training, or Job Search.

Number of Persons Employed This Month, Still Receiving TANF - Individuals with open "empl" activity on OMEGA. Ad hoc report.

Participants Receiving Child Care Services - From Issuance Disbursement Summary (OMEGA report # RM703). Total number of active participants who show receipt of Child Care.

Number of Persons Closed on FAMIS Due to Employment - From FAMIS report #5549-RM-2

Post TANF and Receiving Child Care - Persons no longer in receipt of TANF but still receiving child care. From Share Data Warehouse Child Care case count based on Child Care payments (SDW report WR00022WZ_CC).