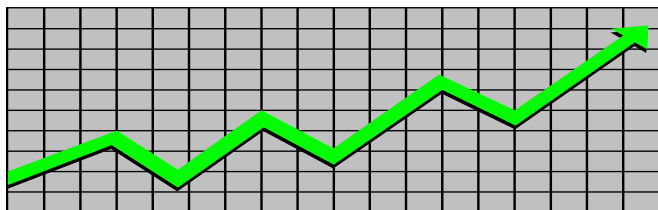


**State of New Jersey**  
**Department of Human Services**  
**Division of Family Development**

---

# **CURRENT PROGRAM STATISTICS**



---

**November 2022**  
**Natasha Johnson, Assistant Commissioner**

## **TABLE OF CONTENTS**

### **HIGHLIGHTS:**

|   |            |
|---|------------|
| <b>WFNJ/TANF</b> .....  | <b>ii</b>  |
| <b>NJ SNAP</b> .....  | <b>ii</b>  |
| <b>EMERGENCY ASSISTANCE</b> .....   | <b>ii</b>  |
| <b>GENERAL ASSISTANCE</b> .....   | <b>iii</b> |
| GA Emergency Assistance.....  | iii        |
| GA Program.....   | iii        |
| <b>CHILD SUPPORT SERVICES</b> .....   | <b>iii</b> |
| <b>WORK FIRST NEW JERSEY (WFNJ)</b> .....   | <b>iii</b> |
| <b>STATISTICS- BY STATE &amp; COUNTY</b> .....  | <b>1</b>   |
| Table 1: WFNJ/TANF Families & Persons (NJ Statewide) November 2020 to 2022.....             | 1          |
| Table 2: WFNJ/TANF Families (by County)- November 2022.....                                 | 2          |
| Table 2B: WFNJ/TANF Persons, Adults, & Children (by County)- November 2022.....             | 3          |
| Table 3: TANF Work Participation Rates Over 12 Month Period (by County)- November 2022..... | 4          |
| Table 4: TANF Work Participation Rates Over 12 Month Period (NJ Statewide)- November 2022.. | 5          |
| Table 5: NJ SNAP Households/Persons (NJ Statewide) November 2020 to 2022.....               | 6          |
| Table 6: NJ SNAP Recipient Trends (NJ Statewide) November 2020 to 2022.....                 | 7          |
| Table 7: NJ SNAP Households/Persons (by County)- November 2022.....                         | 8          |
| Table 8: Emergency Assistance Program (NJ Statewide) November 2020 to 2022.....             | 9          |
| Table 9: Emergency Assistance Program (by County)- November 2022.....                       | 10         |
| Table 10: General Assistance Program (NJ Statewide) November 2020 to 2022.....              | 11         |
| Table 11: General Assistance Program (by County)- November 2022.....                        | 12         |
| Table 12: Child Support Services Distributions (NJ Statewide) FFY 2022.....                 | 13         |
| Table 13: Child Support Services Paternities Established- November 2022.....                | 14         |
| Table 14: Child Support Services Cases With Orders- November 2022.....                      | 15         |
| Table 15: Child Support Services Collections On Current Support- November 2022.....         | 16         |
| Table 16: Child Support Services Cases With Payments On Arrears- November 2022.....         | 17         |
| Table 17: WFNJ Statistical Summary- November 2022.....                                      | 18         |
| <b>ACRONYMS</b> .....   | <b>19</b>  |
| <b>EXPLANATORY NOTES</b> .....  | <b>20</b>  |
| WFNJ Statistical Summary (Table 17).....  | 20         |

## DIVISION OF FAMILY DEVELOPMENT CURRENT PROGRAM STATISTICS NOVEMBER 2022

---

Each month the Division of Family Development publishes its program statistics for: WFNJ/TANF, NJ SNAP, Emergency Assistance, General Assistance, and Child Support Services. When possible, information is provided separately for children and adults. Many tables also provide trend data with information broken down by county for readers to consider. This report is compiled and prepared by The Bureau of Research & Reporting.

---

### **WFNJ/TANF**

- As of the end of November, the TANF caseload had increased by 1,718 cases, from 9,359 in November 2021 to 11,077 in November 2022; an increase of 18.4%.
- The counties with caseloads that increased the most since November 2021 were Sussex (72.2%), Bergen (58.1%), and Union (39.1%).
- The counties with caseloads that decreased the most since November 2021 was Warren (-8%).
- Of the WFNJ/TANF cases, 2,573 or 23.2% were child-only in November 2022.
- The counties with the most child-only cases were Camden (459), Hudson (290), and Passaic (270).
- Hudson (4,618), Camden (4,064), and Essex (3,859) counties had the greatest number of persons receiving TANF in November 2022.

### **NJ SNAP (Formerly FOOD STAMPS)**

- In November 2022, there were 397,363 households receiving NJ SNAP benefits. The number of NJ SNAP households decreased by 67,947 or -14.6%, since November 2021.
- There were 768,584 persons receiving NJ SNAP benefits as of November 2022; a decrease of 129,796 or -14.4% since November 2021.
- The counties having the highest SNAP caseload increase since November 2021 was Hunterdon (4%).
- The counties having the highest SNAP caseload decrease since November 2021 were Union (-27.6%), Hudson (-25.7%), and Passaic (-25%).

### **EMERGENCY ASSISTANCE**

- There were 1,072 TANF families receiving Emergency Assistance (EA) in November 2022; a decrease of 172 or -13.8% since November 2021.
- In November 2022, EA payments were made for 523 SSI recipients.

## **DIVISION OF FAMILY DEVELOPMENT CURRENT PROGRAM STATISTICS NOVEMBER 2022**

- There were 1,642 GA cases with Emergency Assistance payments in November 2022; a decrease of 80 or -4.6% since November 2021.
- The counties that showed the highest percent increase in Emergency Assistance payments were Cumberland (450%), Cape May (120%), and Gloucester (114.3%).
- The counties that showed the highest percent decrease in Emergency Assistance payments were Sussex (-85.7%), Passaic (-59.1%), and Hudson (-34.7%).

### **GENERAL ASSISTANCE**

- The total numbers of cases receiving GA has decreased from 13,521 to 10,639 since November 2021; a decrease of -21.3%.
- There were 7,313 Employable GA and 3,326 Unemployable GA cases in November 2022.
- The counties that showed a percent increase for GA cases were Cape May (37.4%), Gloucester (17.8%), and Somerset (15.6%) since November 2021.
- The counties that showed the highest percent decrease for GA cases since November 2021 were Hudson (-54%), Passaic (-45.6%), and Sussex (-40.8%).
- In November 2022, GA cases showed a -4.33% decrease since October 2022.

### **CHILD SUPPORT SERVICES (QUARTERLY REPORT)**

- The total collection for the Child Support Services Program was about \$265 million from July 2022 to September 2022; a decrease of -10.12% over the same period from FFY 2021.
- Total distributions decreased -11.1% from September 2021.

### **WORK FIRST NEW JERSEY (WFNJ)**

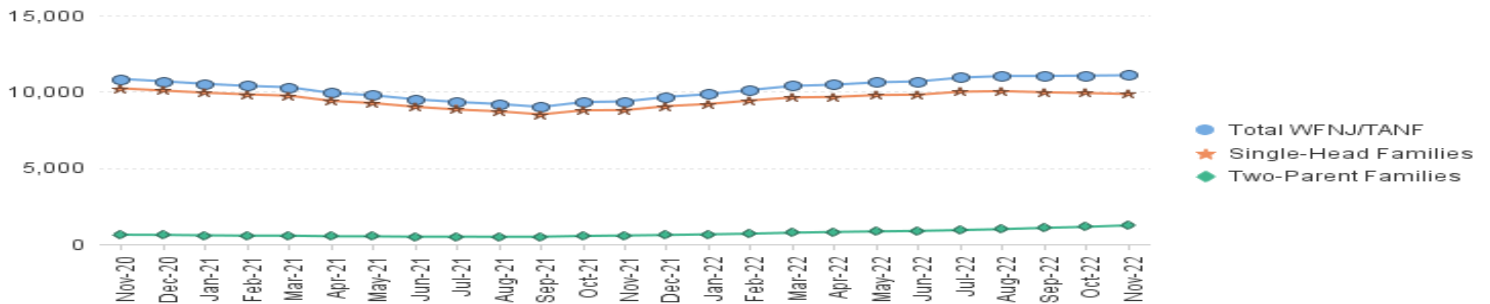
- During the report month of November 2022, there were 553 families in which at least one member was employed and an additional 126 families whose WFNJ assistance cases were closed due to employment - related earnings.
- The three counties with the greatest number of employed active WFNJ recipients were: Hudson (110), Essex (87), and Camden (64).
- There were 206 former TANF cases receiving post-TANF support in the form of child care assistance.

**TABLE 1:**  
**WFNJ/ TANF**  
**PROGRAM**  
**STATEWIDE NUMBER OF APPLICATIONS AND TERMINATIONS DURING NOVEMBER 2022**  
**NUMBER OF ELIGIBLE FAMILIES & PERSONS RECEIVING WFNJ/TANF FOR NOVEMBER 2022**

**NOVEMBER 2020 THROUGH NOVEMBER 2022**

|      |                        | Cases Added | Cases Closed | Child-Only Cases ‡ | Total Single-Head Families | 2-Parent Families | Total WFNJ/TANF Families | %CHNG (1 Yr.) | Total Persons | %CHNG (1 Yr.) | Adults       | Children      |
|------|------------------------|-------------|--------------|--------------------|----------------------------|-------------------|--------------------------|---------------|---------------|---------------|--------------|---------------|
| 2020 | NOV                    | 419         | 767          | 3,470              | 10,218                     | 617               | 10,835                   | -1.1%         | 27,738        | 0.3%          | 7,982        | 19,756        |
|      | DEC                    | 434         | 595          | 3,410              | 10,071                     | 607               | 10,678                   | -2.5%         | 27,371        | -1.4%         | 7,875        | 19,496        |
| 2020 | <b>Average</b>         | <b>682</b>  | <b>724</b>   | <b>3,614</b>       | <b>10,607</b>              | <b>698</b>        | <b>11,306</b>            |               | <b>28,973</b> |               | <b>8,390</b> | <b>20,583</b> |
| 2021 | JAN                    | 400         | 585          | 3,379              | 9,932                      | 580               | 10,512                   | -1.7%         | 26,960        | -0.6%         | 7,713        | 19,247        |
|      | FEB                    | 378         | 504          | 3,347              | 9,818                      | 559               | 10,377                   | -4.1%         | 26,520        | -3.6%         | 7,589        | 18,931        |
|      | MAR                    | 397         | 481          | 3,311              | 9,735                      | 557               | 10,292                   | -3.9%         | 26,335        | -3.2%         | 7,538        | 18,797        |
|      | APR                    | 298         | 704          | 3,224              | 9,395                      | 518               | 9,913                    | -11.8%        | 25,276        | -12.1%        | 7,207        | 18,069        |
|      | MAY                    | 264         | 510          | 3,209              | 9,250                      | 513               | 9,763                    | -18.0%        | 24,858        | -19.1%        | 7,067        | 17,791        |
|      | JUN                    | 373         | 636          | 3,141              | 9,008                      | 489               | 9,497                    | -21.8%        | 24,146        | -23.0%        | 6,845        | 17,301        |
|      | JUL                    | 391         | 590          | 3,068              | 8,829                      | 493               | 9,322                    | -23.0%        | 23,785        | -23.8%        | 6,747        | 17,038        |
|      | AUG                    | 415         | 544          | 3,029              | 8,709                      | 482               | 9,191                    | -22.4%        | 23,445        | -23.0%        | 6,644        | 16,801        |
|      | SEP                    | 388         | 588          | 2,945              | 8,507                      | 489               | 8,996                    | -22.0%        | 23,009        | -22.1%        | 6,540        | 16,469        |
|      | OCT                    | 833         | 564          | 2,921              | 8,779                      | 538               | 9,317                    | -16.7%        | 23,888        | -16.6%        | 6,934        | 16,954        |
|      | NOV                    | 656         | 614          | 2,816              | 8,791                      | 568               | 9,359                    | -13.6%        | 24,282        | -12.5%        | 7,111        | 17,171        |
|      | DEC                    | 702         | 432          | 2,824              | 9,054                      | 601               | 9,655                    | -9.6%         | 25,177        | -8.0%         | 7,432        | 17,745        |
| 2021 | <b>Average</b>         | <b>458</b>  | <b>563</b>   | <b>3,101</b>       | <b>9,151</b>               | <b>532</b>        | <b>9,683</b>             |               | <b>24,807</b> |               | <b>7,114</b> | <b>17,693</b> |
| 2022 | JAN                    | 667         | 484          | 2,796              | 9,193                      | 645               | 9,838                    | -6.4%         | 25,789        | -4.3%         | 7,687        | 18,102        |
|      | FEB                    | 655         | 414          | 2,794              | 9,424                      | 689               | 10,113                   | -2.5%         | 26,638        | 0.4%          | 8,008        | 18,630        |
|      | MAR                    | 715         | 512          | 2,804              | 9,623                      | 756               | 10,379                   | 0.8%          | 27,433        | 4.2%          | 8,331        | 19,102        |
|      | APR                    | 644         | 622          | 2,743              | 9,656                      | 802               | 10,458                   | 5.5%          | 27,749        | 9.8%          | 8,517        | 19,232        |
|      | MAY                    | 632         | 475          | 2,723              | 9,777                      | 838               | 10,615                   | 8.7%          | 28,183        | 13.4%         | 8,730        | 19,453        |
|      | JUN                    | 622         | 599          | 2,718              | 9,802                      | 869               | 10,671                   | 12.4%         | 28,287        | 17.1%         | 8,822        | 19,465        |
|      | JUL                    | 679         | 518          | 2,715              | 9,998                      | 925               | 10,923                   | 17.2%         | 29,043        | 22.1%         | 9,133        | 19,910        |
|      | AUG                    | 713         | 609          | 2,687              | 10,037                     | 987               | 11,024                   | 19.9%         | 29,453        | 25.6%         | 9,324        | 20,129        |
|      | SEP                    | 755         | 808          | 2,651              | 9,959                      | 1,070             | 11,029                   | 22.6%         | 29,486        | 28.1%         | 9,448        | 20,038        |
|      | OCT                    | 753         | 821          | 2,626              | 9,910                      | 1,139             | 11,049                   | 18.6%         | 29,606        | 23.9%         | 9,562        | 20,044        |
|      | NOV                    | 801         | 822          | 2,573              | 9,843                      | 1,234             | 11,077                   | 18.4%         | 29,858        | 23.0%         | 9,738        | 20,120        |
| 2022 | <b>Average To Date</b> | <b>694</b>  | <b>608</b>   | <b>2,712</b>       | <b>9,747</b>               | <b>905</b>        | <b>10,652</b>            |               | <b>28,320</b> |               | <b>8,845</b> | <b>19,475</b> |

**NJ STATEWIDE**  
**Eligible Families Receiving WFNJ/TANF**  
**NOVEMBER 2020 THROUGH NOVEMBER 2022**



Data is derived from NJ MMIS Shared Data Warehouse Issuance files.  
 Effective July 2013 this data query source was converted to the SDW

‡ Child-only cases are defined as families in which no eligible adult receives TANF program benefits, yet the family continues to be headed by at least one of the biological parents, or grandparents, or other appropriate adult.



TABLE 2B :

WFNJ/TANF PROGRAM

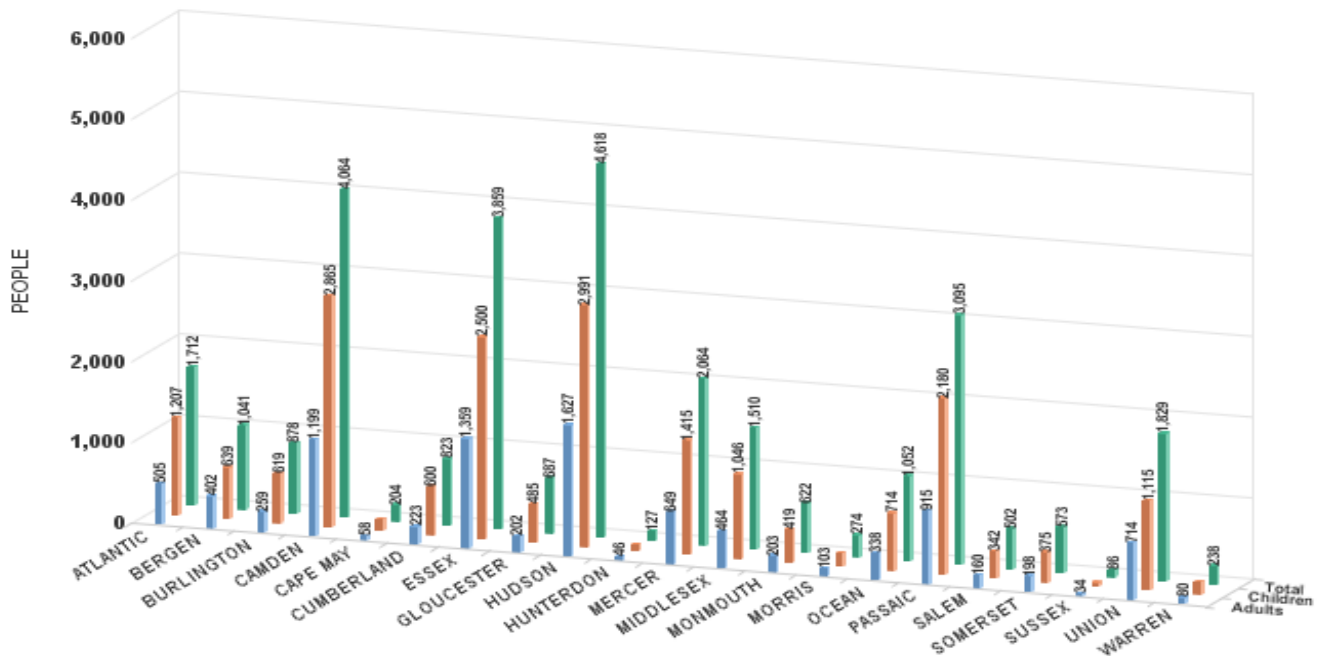
NUMBER OF PARTICIPATING PERSONS, ADULTS, AND CHILDREN BY COUNTY FOR NOVEMBER 2022

PERSONS

| County          | Adults       | Children      | Child/Adult Ratio | Total Persons | % Chng (1 Yr) | Persons Per Case |
|-----------------|--------------|---------------|-------------------|---------------|---------------|------------------|
| ATLANTIC        | 505          | 1,207         | 2.39              | 1,712         | 10.5%         | 2.59             |
| BERGEN          | 402          | 639           | 1.59              | 1,041         | 72.9% Δ       | 2.68             |
| BURLINGTON      | 259          | 619           | 2.39              | 878           | 11.6%         | 2.63             |
| CAMDEN          | 1,199        | 2,865         | 2.39              | 4,064         | 18.9%         | 2.63             |
| CAPE MAY        | 58           | 146           | 2.52              | 204           | 9.1%          | 2.79             |
| CUMBERLAND      | 223          | 600           | 2.69              | 823           | 7.6% *        | 2.90             |
| ESSEX           | 1,359        | 2,500         | 1.84              | 3,859         | 29.4%         | 2.75             |
| GLOUCESTER      | 202          | 485           | 2.40              | 687           | 14.9%         | 2.66             |
| HUDSON          | 1,627        | 2,991         | 1.84              | 4,618         | 26.3%         | 2.71             |
| HUNTERDON       | 46           | 81            | 1.76              | 127           | 4.1% *        | 2.89             |
| MERCER          | 649          | 1,415         | 2.18              | 2,064         | 28.8%         | 2.60             |
| MIDDLESEX       | 464          | 1,046         | 2.25              | 1,510         | 7.7%          | 2.60             |
| MONMOUTH        | 203          | 419           | 2.06              | 622           | 49.5% Δ       | 2.60             |
| MORRIS          | 103          | 171           | 1.66              | 274           | 27.4%         | 2.66             |
| OCEAN           | 338          | 714           | 2.11              | 1,052         | 28.4%         | 2.87             |
| PASSAIC         | 915          | 2,180         | 2.38              | 3,095         | 11.8%         | 2.77             |
| SALEM           | 160          | 342           | 2.14              | 502           | 47.2%         | 2.84             |
| SOMERSET        | 198          | 375           | 1.89              | 573           | 19.6%         | 2.62             |
| SUSSEX          | 34           | 52            | 1.53              | 86            | 75.5% Δ       | 2.77             |
| UNION           | 714          | 1,115         | 1.56              | 1,829         | 43.9%         | 2.75             |
| WARREN          | 80           | 158           | 1.98              | 238           | -5.6% *       | 2.59             |
| <b>NJ Total</b> | <b>9,738</b> | <b>20,120</b> | <b>2.07</b>       | <b>29,858</b> | <b>23.0%</b>  | <b>2.70</b>      |

Δ=higher caseload % change

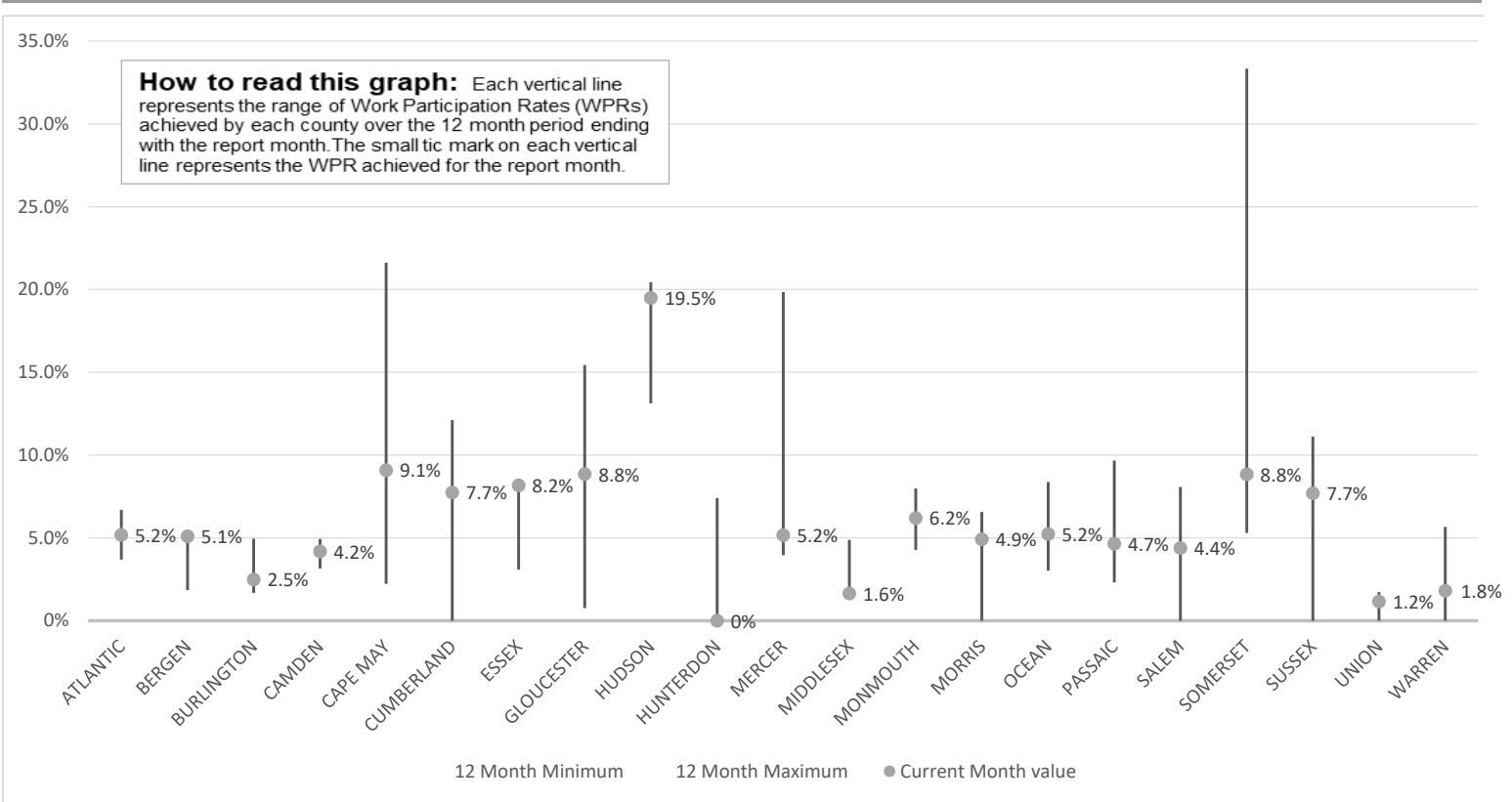
\*=lower caseload % change



Data is derived from NJ MMIS Shared Data Warehouse Issuance files. Effective July 2013 this data query source was converted to the SDW

TABLE 3 :

Work Participation Rates Achieved Over 12 Month Period  
Ending with NOVEMBER 2022

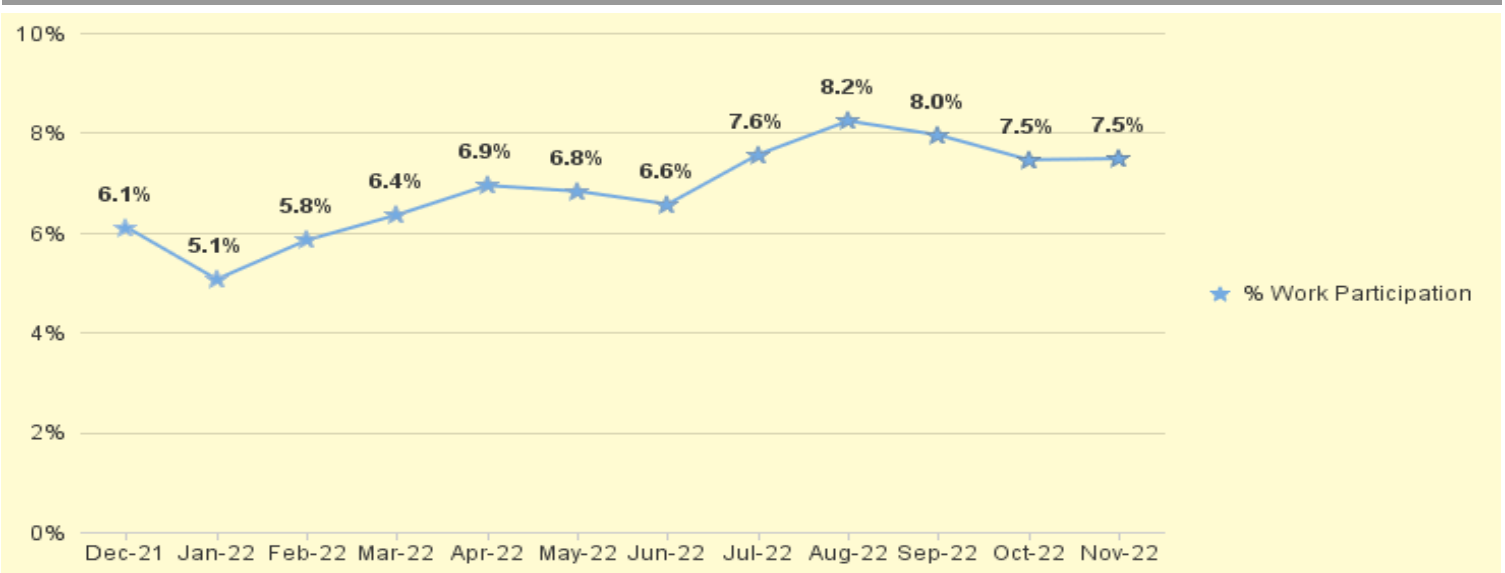


Data is derived from NJ MMIS Shared Data Warehouse Issuance files.  
Effective July 2013 this data query source was converted to the SDW



TABLE 4 :

WFNJ/TANF Work Participation Rates  
for 12-Month Period Ending with NOVEMBER 2022 Statewide



\* The Work Participation rate measures the number of countable Temporary Assistance for Needs Families (TANF) participants based on federal formula. The reported rate is considered to be preliminary until officially calculated by the federal government soon after the close of each federal fiscal year.

**TABLE 5 :**  
**NJ SNAP**  
**(FOOD STAMPS)**  
**NUMBER OF PARTICIPATING HOUSEHOLDS, PERSONS, ADULTS**  
**AND CHILDREN FOR NOVEMBER 2022 (STATEWIDE)**

**NOVEMBER 2020 THROUGH NOVEMBER 2022**

|             |                        | HOUSEHOLDS    |                     |                |                  | PERSONS        |                |                |                  |                |                             |
|-------------|------------------------|---------------|---------------------|----------------|------------------|----------------|----------------|----------------|------------------|----------------|-----------------------------|
|             |                        | WFNJ/<br>TANF | Other low<br>income | Total          | % CHNG<br>(1 YR) | Adults         | Children       | TOTAL          | % CHNG<br>(1 YR) | Age 60+        | People with<br>a disability |
| <b>2020</b> | NOV                    | 10,335        | 395,876             | <b>406,211</b> | 18.7%            | 440,136        | 350,631        | <b>790,767</b> | 17.1%            | 123,104        | 216,208                     |
|             | DEC                    | 10,308        | 401,212             | <b>411,520</b> | 20.8%            | 446,083        | 354,408        | <b>800,491</b> | 19.3%            | 123,498        | 221,131                     |
| <b>2020</b> | <b>Average</b>         | <b>10,790</b> | <b>361,610</b>      | <b>372,400</b> |                  | <b>401,036</b> | <b>326,988</b> | <b>728,024</b> |                  | <b>120,180</b> | <b>209,182</b>              |
| <b>2021</b> | JAN                    | 10,214        | 409,050             | <b>419,264</b> | 24.8%            | 454,910        | 360,490        | <b>815,400</b> | 23.6%            | 123,751        | 221,129                     |
|             | FEB                    | 9,980         | 413,080             | <b>423,060</b> | 25.6%            | 459,801        | 362,760        | <b>822,561</b> | 24.4%            | 123,888        | 221,585                     |
|             | MAR                    | 9,632         | 418,259             | <b>427,891</b> | 27.7%            | 465,302        | 366,223        | <b>831,525</b> | 26.5%            | 124,614        | 222,961                     |
|             | APR                    | 9,474         | 423,186             | <b>432,660</b> | 24.3%            | 470,412        | 369,625        | <b>840,037</b> | 23.0%            | 125,182        | 224,256                     |
|             | MAY                    | 9,371         | 428,961             | <b>438,332</b> | 19.9%            | 476,827        | 373,151        | <b>849,978</b> | 18.4%            | 125,750        | 225,339                     |
|             | JUN                    | 9,833         | 440,525             | <b>450,358</b> | 21.8%            | 490,430        | 393,310        | <b>883,740</b> | 21.8%            | 126,085        | 227,479                     |
|             | JUL                    | 9,067         | 437,889             | <b>446,956</b> | 18.8%            | 485,975        | 379,528        | <b>865,503</b> | 17.8%            | 126,552        | 227,352                     |
|             | AUG                    | 9,070         | 442,333             | <b>451,403</b> | 17.4%            | 490,577        | 383,106        | <b>873,683</b> | 16.7%            | 127,091        | 228,513                     |
|             | SEP                    | 9,561         | 447,902             | <b>457,463</b> | 15.8%            | 497,122        | 390,345        | <b>887,467</b> | 15.4%            | 127,550        | 229,863                     |
|             | OCT                    | 9,822         | 452,139             | <b>461,961</b> | 14.3%            | 502,415        | 388,925        | <b>891,340</b> | 13.1%            | 128,700        | 231,751                     |
|             | NOV                    | 9,967         | 455,343             | <b>465,310</b> | 14.5%            | 506,476        | 391,904        | <b>898,380</b> | 13.6%            | 129,292        | 233,050                     |
|             | DEC                    | 10,138        | 458,239             | <b>468,377</b> | 13.8%            | 510,116        | 392,757        | <b>902,873</b> | 12.8%            | 129,744        | 238,680                     |
| <b>2021</b> | <b>Average</b>         | <b>9,677</b>  | <b>435,576</b>      | <b>445,253</b> |                  | <b>484,197</b> | <b>379,344</b> | <b>863,541</b> |                  | <b>126,517</b> | <b>227,663</b>              |
| <b>2022</b> | JAN                    | 10,418        | 457,935             | <b>468,353</b> | 11.7%            | 509,801        | 392,651        | <b>902,452</b> | 10.7%            | 157,425        | 236,238                     |
|             | FEB                    | 10,486        | 451,733             | <b>462,219</b> | 9.3%             | 503,693        | 385,199        | <b>888,892</b> | 8.1%             | 156,540        | 232,864                     |
|             | MAR                    | 10,588        | 455,766             | <b>466,354</b> | 9.0%             | 508,290        | 388,977        | <b>897,267</b> | 7.9%             | 158,331        | 234,617                     |
|             | APR                    | 10,706        | 439,659             | <b>450,365</b> | 4.1%             | 491,276        | 375,105        | <b>866,381</b> | 3.1%             | 156,504        | 231,071                     |
|             | MAY                    | 10,669        | 423,672             | <b>434,341</b> | -0.9%            | 474,542        | 360,324        | <b>834,866</b> | -1.8%            | 154,816        | 227,400                     |
|             | JUN                    | 10,650        | 412,366             | <b>423,016</b> | -6.1%            | 462,757        | 351,378        | <b>814,135</b> | -7.9%            | 154,107        | 225,452                     |
|             | JUL                    | 10,910        | 400,990             | <b>411,900</b> | -7.8%            | 451,428        | 343,730        | <b>795,158</b> | -8.1%            | 152,494        | 222,166                     |
|             | AUG                    | 12,919        | 421,433             | <b>434,352</b> | -3.8%            | 475,405        | 401,190        | <b>876,595</b> | 0.3%             | 151,643        | 224,286                     |
|             | SEP                    | 11,543        | 391,350             | <b>402,893</b> | -11.9%           | 440,973        | 348,303        | <b>789,276</b> | -11.1%           | 150,801        | 220,166                     |
|             | OCT                    | 11,175        | 384,016             | <b>395,191</b> | -14.5%           | 433,352        | 329,837        | <b>763,189</b> | -14.4%           | 152,434        | 220,723                     |
|             | NOV                    | 10,978        | 386,385             | <b>397,363</b> | -14.6%           | 436,125        | 332,459        | <b>768,584</b> | -14.4%           | 153,574        | 221,980                     |
| <b>2022</b> | <b>Average To Date</b> | <b>11,004</b> | <b>420,482</b>      | <b>431,486</b> |                  | <b>471,604</b> | <b>364,468</b> | <b>836,072</b> |                  | <b>154,456</b> | <b>227,151</b>              |

This Table is based on those Households & Persons that received SNAP issuances (benefits) during the month

Data is derived from NJ MMIS Shared Data Warehouse.

Effective July 2013 this data query source was converted to the SDW.

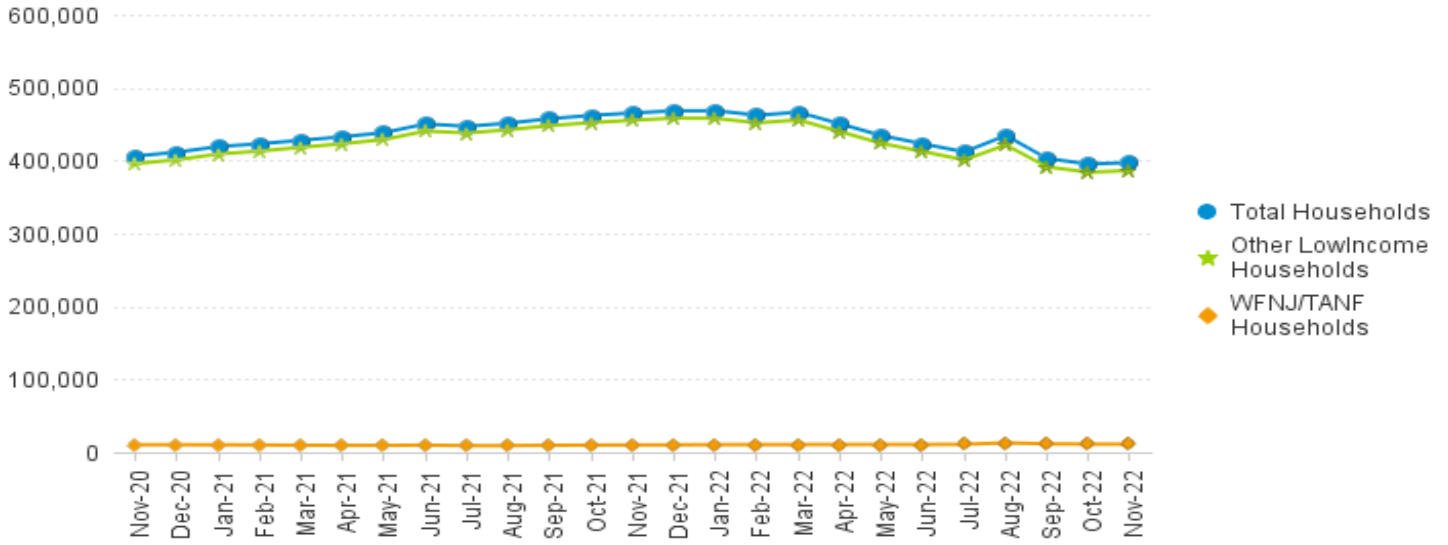
\* Age 60+ and People with a disability columns are independent subsets of total persons. An individual might appear in both columns

TABLE 6:

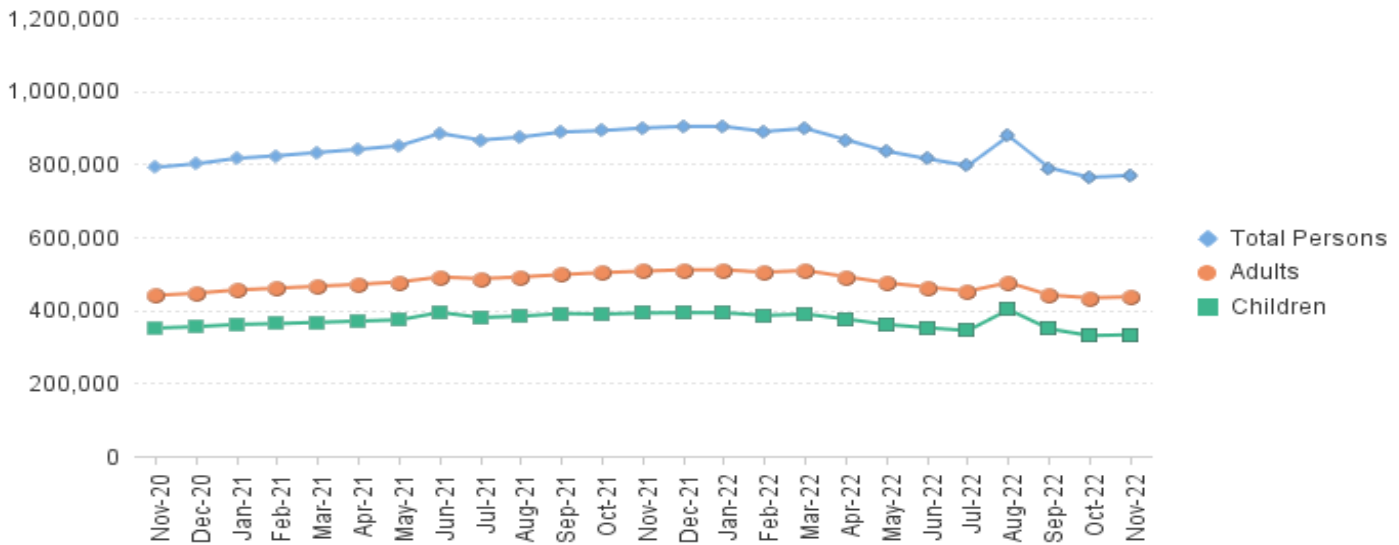
NJ SNAP  
(FOOD STAMPS)

TRENDS FOR PARTICIPATING HOUSEHOLDS & PERSONS  
NOVEMBER 2020 THROUGH NOVEMBER 2022 (STATEWIDE)

Statewide NJ SNAP Households: NOVEMBER 2020 Through NOVEMBER 2022



Statewide NJ SNAP Persons: NOVEMBER 2020 Through NOVEMBER 2022



Data is derived from NJ MMIS Shared Data Warehouse Issuance files.

Effective July 2013 this data query source was converted to the SDW

TABLE 7 :  
NJ SNAP

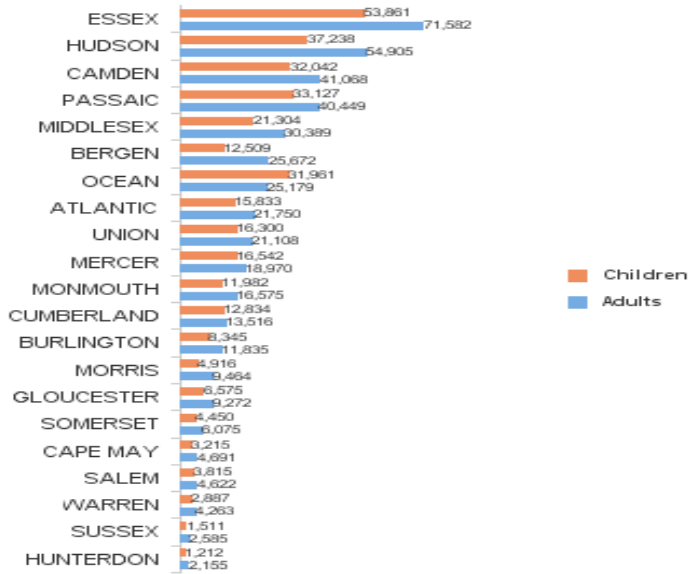
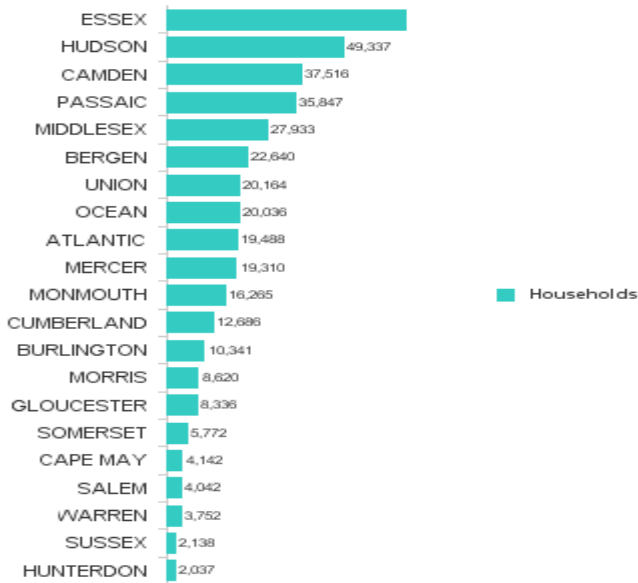
NUMBER OF PARTICIPATING HOUSEHOLDS, PERSONS, ADULTS  
AND CHILDREN BY COUNTY FOR NOVEMBER 2022

| County          | HOUSEHOLDS    |                     |                |                  | PERSONS        |                |                |                  | Age 60+        | People with a disability |
|-----------------|---------------|---------------------|----------------|------------------|----------------|----------------|----------------|------------------|----------------|--------------------------|
|                 | WFNJ/<br>TANF | Other<br>low income | TOTAL          | % Chng<br>(1 Yr) | Adults         | Children       | TOTAL          | % Chng<br>(1 Yr) |                |                          |
| ATLANTIC        | 623           | 18,865              | 19,488         | -14.4%           | 21,750         | 15,833         | 37,583         | -13.2%           | 6,869          | 10,673                   |
| BERGEN          | 386           | 22,254              | 22,640         | -4.3%            | 25,672         | 12,509         | 38,181         | -3.7%            | 14,064         | 16,042                   |
| BURLINGTON      | 443           | 9,898               | 10,341         | -17.2%           | 11,835         | 8,345          | 20,180         | -17.7%           | 3,661          | 6,474                    |
| CAMDEN          | 1,413         | 36,103              | 37,516         | -6.9%            | 41,068         | 32,042         | 73,110         | -6.8%            | 10,935         | 19,641                   |
| CAPE MAY        | 85            | 4,057               | 4,142          | -4.6%            | 4,691          | 3,215          | 7,906          | -3.3%            | 1,361          | 2,315                    |
| CUMBERLAND      | 292           | 12,394              | 12,686         | -8.9%            | 13,516         | 12,834         | 26,350         | -8.1%            | 3,619          | 7,095                    |
| ESSEX           | 1,709         | 65,252              | 66,961         | -14.7%           | 71,582         | 53,861         | 125,443        | -15.5%           | 20,575         | 31,338                   |
| GLOUCESTER      | 236           | 8,100               | 8,336          | -13.6%           | 9,272          | 6,575          | 15,847         | -14.2%           | 3,037          | 5,932                    |
| HUDSON          | 1,602         | 47,735              | 49,337         | -25.7% *         | 54,905         | 37,238         | 92,143         | -24.3% *         | 21,664         | 27,598                   |
| HUNTERDON       | 57            | 1,980               | 2,037          | 4.0% Δ           | 2,155          | 1,212          | 3,367          | 2.0% Δ           | 781            | 1,163                    |
| MERCER          | 819           | 18,491              | 19,310         | -2.9%            | 18,970         | 16,542         | 35,512         | -3.0%            | 5,717          | 10,586                   |
| MIDDLESEX       | 590           | 27,343              | 27,933         | -9.5%            | 30,389         | 21,304         | 51,693         | -10.5%           | 13,909         | 17,565                   |
| MONMOUTH        | 226           | 16,039              | 16,265         | -12.2%           | 16,575         | 11,982         | 28,557         | -12.7%           | 6,871          | 9,874                    |
| MORRIS          | 120           | 8,500               | 8,620          | -4.3%            | 9,464          | 4,916          | 14,380         | -5.0%            | 4,869          | 5,494                    |
| OCEAN           | 358           | 19,678              | 20,036         | -2.1% Δ          | 25,179         | 31,961         | 57,140         | -1.3% Δ          | 6,814          | 10,726                   |
| PASSAIC         | 981           | 34,866              | 35,847         | -25.0% *         | 40,449         | 33,127         | 73,576         | -25.2% *         | 14,620         | 18,378                   |
| SALEM           | 176           | 3,866               | 4,042          | -2.4% Δ          | 4,622          | 3,815          | 8,437          | -0.2% Δ          | 1,186          | 2,341                    |
| SOMERSET        | 210           | 5,562               | 5,772          | -8.7%            | 6,075          | 4,450          | 10,525         | -8.4%            | 2,516          | 3,531                    |
| SUSSEX          | 38            | 2,100               | 2,138          | -4.3%            | 2,585          | 1,511          | 4,096          | -1.9%            | 933            | 1,569                    |
| UNION           | 516           | 19,648              | 20,164         | -27.6% *         | 21,108         | 16,300         | 37,408         | -29.4% *         | 8,226          | 11,228                   |
| WARREN          | 98            | 3,654               | 3,752          | -11.3%           | 4,263          | 2,887          | 7,150          | -12.0%           | 1,347          | 2,417                    |
| <b>NJ TOTAL</b> | <b>10,978</b> | <b>386,385</b>      | <b>397,363</b> | <b>-14.6%</b>    | <b>436,125</b> | <b>332,459</b> | <b>768,584</b> | <b>-14.4%</b>    | <b>153,574</b> | <b>221,980</b>           |

Δ=higher caseload % change

\*=lower caseload % change

Total NJ SNAP Recipients  
NOVEMBER 2022 by County



Data is derived from NJ MMIS Shared Data Warehouse.

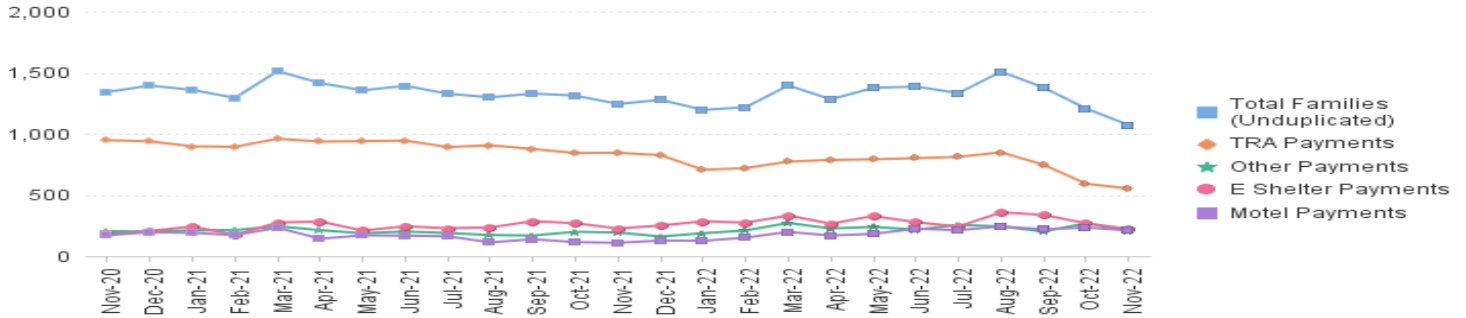
Effective July 2013 this data query source was converted to the SDW.

\* Age 60+ and People with a disability columns are independent subsets of total persons. An individual might appear in both columns

**TABLE 8 : EMERGENCY ASSISTANCE (STATEWIDE) TOTAL NUMBER OF ELIGIBLE FAMILIES RECEIVING EMERGENCY ASSISTANCE PAYMENTS NOVEMBER 2020 THROUGH NOVEMBER 2022 - STATEWIDE**

|      |                        | Total WFNJ/EA Families (Undupl) |               | Temp Rent Asst. Payments (Undupl) |               | Motel Housing Payments (Undupl) |               | Shelter/Transitional Housing Payments (Undupl) |               | Other WFNJ/EA Payments (Undupl) |               |
|------|------------------------|---------------------------------|---------------|-----------------------------------|---------------|---------------------------------|---------------|--|---------------|---------------------------------|---------------|
|      |                        |                                 | % CHNG (1 YR) |                                   | % CHNG (1 YR) |                                 | % CHNG (1 YR) |  | % CHNG (1 YR) |                                 | % CHNG (1 YR) |
| 2020 | NOV                    | 1,343                           | -13.6%        | 948                               | 8.8%          | 170                             | 19.7%         | 180  | -52.9%        | 204                             | -50.6%        |
|      | DEC                    | 1,395                           | -14.5%        | 939                               | 9.8%          | 196                             | 2.1%          | 206  | -53.2%        | 201                             | -51.8%        |
| 2020 | <b>Average</b>         | <b>1,560</b>                    |               | <b>970</b>                        |               | <b>220</b>                      |               | <b>303</b>                                     |               | <b>274</b>                      |               |
| 2021 | JAN                    | 1,359                           | -23.1%        | 898                               | -5.4%         | 190                             | -24.3%        | 242  | -42.7%        | 210                             | -59.1%        |
|      | FEB                    | 1,294                           | -19.1%        | 894                               | -4.1%         | 172                             | -5.0%         | 174  | -52.3%        | 213                             | -47.9%        |
|      | MAR                    | 1,513                           | -12.2%        | 960                               | -2.0%         | 232                             | 19.0%         | 275  | -32.3%        | 244                             | -47.2%        |
|      | APR                    | 1,415                           | -2.7%         | 937                               | -2.4%         | 142                             | -7.2%         | 283  | -15.3%        | 212                             | 47.2%         |
|      | MAY                    | 1,356                           | -6.1%         | 941                               | 5.7%          | 170                             | -28.6%        | 209  | -22.6%        | 187                             | 14.7%         |
|      | JUN                    | 1,393                           | -14.6%        | 944                               | -6.9%         | 167                             | -37.0%        | 244  | -20.0%        | 201                             | -14.1%        |
|      | JUL                    | 1,328                           | -14.7%        | 892                               | -12.0%        | 162                             | -35.5%        | 228  | -10.2%        | 189                             | -19.2%        |
|      | AUG                    | 1,299                           | -20.0%        | 907                               | -9.8%         | 112                             | -59.9%        | 235  | -22.4%        | 172                             | -27.7%        |
|      | SEP                    | 1,329                           | -18.2%        | 876                               | -13.9%        | 138                             | -46.5%        | 286  | -2.7%         | 168                             | -28.2%        |
|      | OCT                    | 1,313                           | -15.7%        | 843                               | -15.4%        | 114                             | -43.3%        | 269  | -7.9%         | 199                             | -19.4%        |
|      | NOV                    | 1,244                           | -7.4%         | 845                               | -10.9%        | 109                             | -35.9%        | 226  | 25.6%         | 193                             | -5.4%         |
|      | DEC                    | 1,278                           | -8.4%         | 826                               | -12.0%        | 127                             | -35.2%        | 250  | 21.4%         | 160                             | -20.4%        |
| 2021 | <b>Average</b>         | <b>1,343</b>                    |               | <b>897</b>                        |               | <b>153</b>                      |               | <b>243</b>                                     |               | <b>196</b>                      |               |
| 2022 | JAN                    | 1,196                           | -12.0%        | 706                               | -21.4%        | 125                             | -34.2%        | 285  | 17.8%         | 187                             | -11.0%        |
|      | FEB                    | 1,218                           | -5.9%         | 720                               | -19.5%        | 151                             | -12.2%        | 274  | 57.5%         | 210                             | -1.4%         |
|      | MAR                    | 1,396                           | -7.7%         | 773                               | -19.5%        | 198                             | -14.7%        | 332  | 20.7%         | 271                             | 11.1%         |
|      | APR                    | 1,282                           | -9.4%         | 787                               | -16.0%        | 168                             | 18.3%         | 265  | -6.4%         | 226                             | 6.6%          |
|      | MAY                    | 1,376                           | 1.5%          | 792                               | -15.8%        | 182                             | 7.1%          | 328  | 56.9%         | 239                             | 27.8%         |
|      | JUN                    | 1,387                           | -0.4%         | 801                               | -15.1%        | 224                             | 34.1%         | 277  | 13.5%         | 216                             | 7.5%          |
|      | JUL                    | 1,333                           | 0.4%          | 812                               | -9.0%         | 212                             | 30.9%         | 242  | 6.1%          | 255                             | 34.9%         |
|      | AUG                    | 1,509                           | 16.2%         | 849                               | -6.4%         | 243                             | 117.0%        | 358  | 52.3%         | 243                             | 41.3%         |
|      | SEP                    | 1,378                           | 3.7%          | 747                               | -14.7%        | 219                             | 58.7%         | 337  | 17.8%         | 201                             | 19.6%         |
|      | OCT                    | 1,207                           | -8.1%         | 592                               | -29.8%        | 234                             | 105.3%        | 268  | -0.4%         | 269                             | 35.2%         |
|      | NOV                    | 1,072                           | -13.8%        | 553                               | -34.6%        | 210                             | 92.7%         | 223  | -1.3%         | 203                             | 5.2%          |
| 2022 | <b>Average To Date</b> | <b>1,305</b>                    |               | <b>739</b>                        |               | <b>197</b>                      |               | <b>290</b>                                     |               | <b>229</b>                      |               |

**NJ STATEWIDE Families Receiving Emergency Assistance NOVEMBER 2020 THROUGH NOVEMBER 2022**



WFNJ/EA data is derived from NJ MMIS Shared Data Warehouse. Effective July 2013 this data query source was converted to the SDW.

\* Effective Feb '11 Transitional Housing Payments were removed from 'Other EA Payments' and added to 'Shelter Payments'.

**TABLE 9 :**  
**EMERGENCY ASSISTANCE (BY COUNTY)**  
**TOTAL NUMBER OF ELIGIBLE FAMILIES RECEIVING EMERGENCY ASSISTANCE PAYMENTS BY COUNTY (UNDUPLICATED CASES) FOR NOVEMBER 2022**

| County          | TOTAL WFNJ/EA Families (Undupl) | % CHNG From NOV 21 |   | Temp Rent Asst. Payments (Undupl) | Motel Housing Payments (Undupl) | Shelter/Transitional Housing Payments (Undupl) | Other WFNJ/EA Payments (Undupl) | SSI Receipts Receiving EA ** |
|-----------------|---------------------------------|--------------------|---|-----------------------------------|---------------------------------|--|---------------------------------|------------------------------|
| ATLANTIC        | 17                              | -62.2%             | * | 12                                | 2                               | 0  | 4                               | 43                           |
| BERGEN          | 31                              | -31.1%             |   | 24                                | 0                               | 3  | 4                               | 44                           |
| BURLINGTON      | 96                              | 433.3%             | Δ | 6                                 | 54                              | 40   | 2                               | 61                           |
| CAMDEN          | 23                              | -17.9%             |   | 6                                 | 6                               | 5  | 8                               | 18                           |
| CAPE MAY        | 16                              | 6.7%               |   | 5                                 | 12                              | 0  | 1                               | 10                           |
| CUMBERLAND      | 0                               | 0%                 |   | 0                                 | 0                               | 0  | 0                               | 0                            |
| ESSEX           | 89                              | -39.9%             |   | 24                                | 1                               | 52   | 15                              | 8                            |
| GLOUCESTER      | 12                              | 71.4%              | Δ | 2                                 | 0                               | 6  | 5                               | 5                            |
| HUDSON          | 217                             | 8.5%               |   | 164                               | 11                              | 40   | 39                              | 64                           |
| HUNTERDON       | 7                               | -12.5%             |   | 5                                 | 0                               | 0  | 4                               | 2                            |
| MERCER          | 113                             | 14.1%              |   | 62                                | 33                              | 7  | 21                              | 81                           |
| MIDDLESEX       | 82                              | -36.9%             |   | 44                                | 16                              | 1  | 34                              | 47                           |
| MONMOUTH        | 34                              | 36.0%              |   | 1                                 | 8                               | 27   | 3                               | 16                           |
| MORRIS          | 19                              | 111.1%             | Δ | 5                                 | 13                              | 0  | 2                               | 19                           |
| OCEAN           | 50                              | -38.3%             |   | 24                                | 24                              | 0  | 12                              | 20                           |
| PASSAIC         | 130                             | -43.5%             | * | 88                                | 5                               | 21   | 23                              | 9                            |
| SALEM           | 3                               | 50.0%              |   | 1                                 | 0                               | 1  | 1                               | 2                            |
| SOMERSET        | 64                              | -11.1%             |   | 43                                | 8                               | 8  | 17                              | 50                           |
| SUSSEX          | 2                               | 0%                 |   | 0                                 | 1                               | 0  | 1                               | 3                            |
| UNION           | 62                              | -11.4%             |   | 35                                | 12                              | 11   | 6                               | 20                           |
| WARREN          | 5                               | -54.5%             | * | 2                                 | 4                               | 1  | 1                               | 1                            |
| <b>NJ Total</b> | <b>1,072</b>                    | <b>-13.8%</b>      |   | <b>553</b>                        | <b>210</b>                      | <b>223</b>                                     | <b>203</b>                      | <b>523</b>                   |

Δ=higher caseload % change

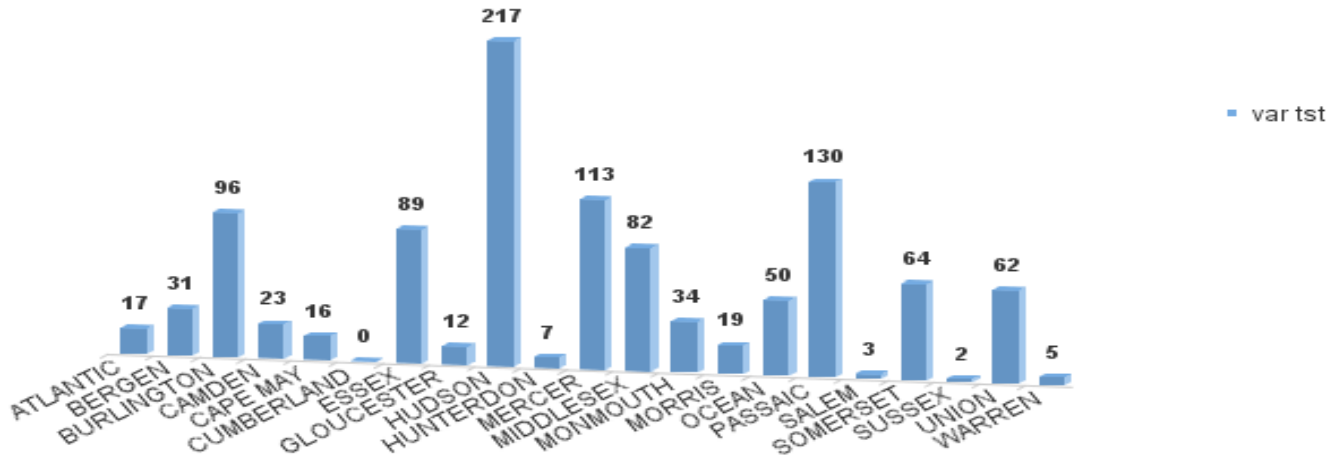
\*=lower caseload % change

\*\* SSI-EA includes pay codes 22 and 24, data is derived from NJ Division of Family Development FAMIS Report #FM430-03A

WFNJ/EA data is derived from NJ MMIS Shared Data Warehouse.

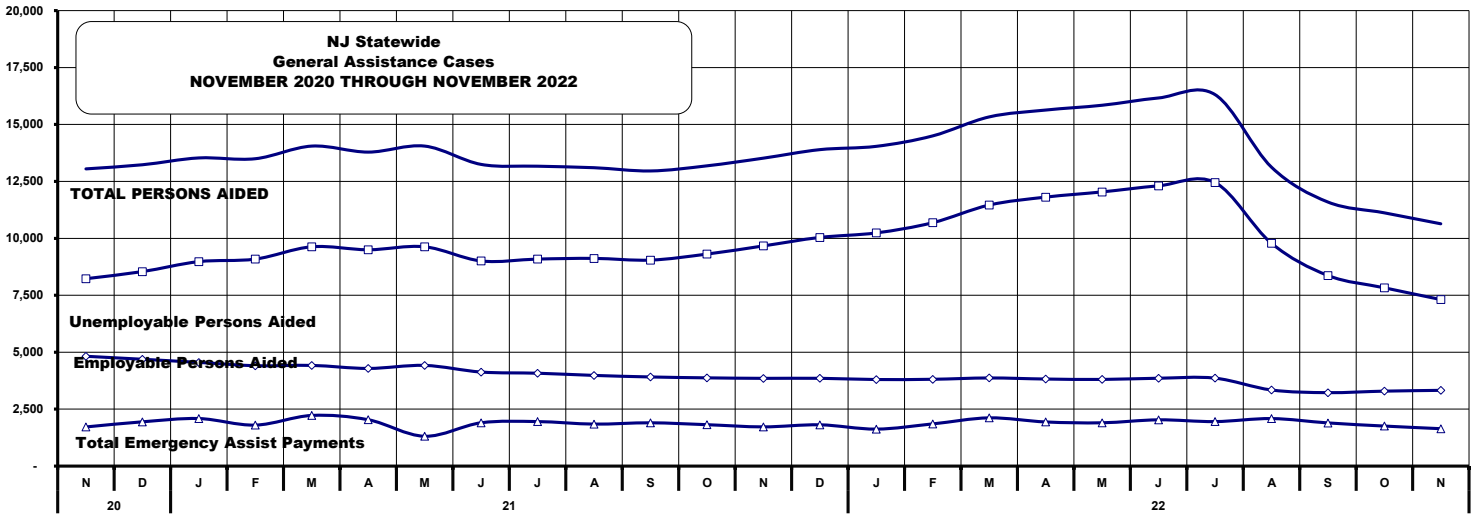
Effective July 2013 this data query source was converted to the SDW.

**Number WFNJ Families Receiving EA by County NOVEMBER 2022**



**TABLE 10:  
GENERAL ASSISTANCE PROGRAM  
NUMBER OF EMPLOYABLE AND UNEMPLOYABLE RECIPIENTS AND EMERGENCY ASSISTANCE PAYMENTS - STATEWIDE  
NOVEMBER 2020 THROUGH NOVEMBER 2022**

|                             | Total Cases   |               |              |               | Emergency Assistance Cases |               |                             |              |              |               |
|-----------------------------|---------------|---------------|--------------|---------------|----------------------------|---------------|-----------------------------|--------------|--------------|---------------|
|                             | Employable    | % Chng (1 Yr) | Unemployable | % Chng (1 Yr) | Total                      | % Chng (1 Yr) | Temporary Rental Assistance | Other GA-EA  | Total        | % Chng (1 Yr) |
| 2020 NOV                    | 8,228         | 111.0%        | 4,822        | -19.5%        | 13,050                     | 32.0%         | 835                         | 884          | 1,719        | -17.2%        |
| 2020 DEC                    | 8,540         | 118.0%        | 4,691        | -21.9%        | 13,231                     | 33.3%         | 833                         | 1,111        | 1,944        | -4.7%         |
| <b>2020 AVERAGE</b>         | <b>6,875</b>  |               | <b>5,461</b> |               | <b>12,337</b>              |               | <b>885</b>                  | <b>1,110</b> | <b>1,995</b> |               |
| 2021 JAN                    | 8,978         | 118.5%        | 4,553        | -23.1%        | 13,531                     | 34.9%         | 848                         | 1,240        | 2,088        | -1.8%         |
| FEB                         | 9,089         | 116.1%        | 4,407        | -25.7%        | 13,496                     | 33.2%         | 809                         | 991          | 1,800        | -10.3%        |
| MAR                         | 9,630         | 97.8%         | 4,421        | -26.2%        | 14,051                     | 29.4%         | 819                         | 1,405        | 2,224        | 11.4%         |
| APR                         | 9,499         | 70.0%         | 4,288        | -26.9%        | 13,787                     | 20.4%         | 832                         | 1,204        | 2,036        | 15.2%         |
| MAY                         | 9,630         | 38.8%         | 4,421        | -23.6%        | 14,051                     | 10.5%         | 819                         | 491          | 1,310        | -28.7%        |
| JUN                         | 9,007         | 18.7%         | 4,130        | -32.8%        | 13,247                     | 0.1%          | 794                         | 1,108        | 1,902        | -12.4%        |
| JUL                         | 9,090         | 13.7%         | 4,078        | -26.1%        | 13,168                     | -2.6%         | 833                         | 1,121        | 1,954        | -9.6%         |
| AUG                         | 9,120         | 12.3%         | 3,982        | -24.3%        | 13,102                     | -2.1%         | 753                         | 1,091        | 1,844        | -10.6%        |
| SEP                         | 9,045         | 10.6%         | 3,914        | -23.7%        | 12,959                     | -2.6%         | 787                         | 1,114        | 1,901        | -12.9%        |
| OCT                         | 9,309         | 14.1%         | 3,875        | -22.3%        | 13,184                     | 0.3%          | 757                         | 1,061        | 1,818        | -7.3%         |
| NOV                         | 9,668         | 17.5%         | 3,853        | -20.1%        | 13,521                     | 3.6%          | 711                         | 1,011        | 1,722        | 0.2%          |
| 2021 DEC                    | 10,040        | 17.6%         | 3,855        | -17.8%        | 13,895                     | 5.0%          | 742                         | 1,071        | 1,813        | -6.7%         |
| <b>2021 AVERAGE</b>         | <b>9,342</b>  |               | <b>4,148</b> |               | <b>13,499</b>              |               | <b>792</b>                  | <b>1,076</b> | <b>1,868</b> |               |
| 2022 JAN                    | 10,239        | 14.0%         | 3,801        | -16.5%        | 14,040                     | 3.8%          | 677                         | 947          | 1,624        | -22.2%        |
| FEB                         | 10,687        | 17.6%         | 3,812        | -13.5%        | 14,499                     | 7.4%          | 727                         | 1,126        | 1,853        | 2.9%          |
| MAR                         | 11,462        | 19.0%         | 3,870        | -12.5%        | 15,332                     | 9.1%          | 719                         | 1,399        | 2,118        | -4.8%         |
| APR                         | 11,810        | 24.3%         | 3,823        | -10.8%        | 15,633                     | 13.4%         | 742                         | 1,196        | 1,938        | -4.8%         |
| MAY                         | 12,039        | 25.0%         | 3,805        | -13.9%        | 15,844                     | 12.8%         | 750                         | 1,152        | 1,902        | 45.2%         |
| JUN                         | 12,306        | 36.6%         | 3,858        | -6.6%         | 16,164                     | 22.0%         | 782                         | 1,250        | 2,032        | 6.8%          |
| JUL                         | 12,451        | 37.0%         | 3,862        | -5.3%         | 16,313                     | 23.9%         | 758                         | 1,196        | 1,954        | 0.0%          |
| AUG                         | 9,785         | 7.3%          | 3,342        | -16.1%        | 13,127                     | 0.2%          | 691                         | 1,396        | 2,087        | 13.2%         |
| SEP                         | 8,370         | -7.5%         | 3,225        | -17.6%        | 11,595                     | -10.5%        | 635                         | 1,261        | 1,896        | -0.3%         |
| OCT                         | 7,829         | -15.9%        | 3,291        | -15.1%        | 11,120                     | -15.7%        | 574                         | 1,184        | 1,758        | -3.3%         |
| NOV                         | 7,313         | -24.4%        | 3,326        | -13.7%        | 10,639                     | -21.3%        | 602                         | 1,040        | 1,642        | -4.6%         |
| <b>2022 AVERAGE TO DATE</b> | <b>10,390</b> |               | <b>3,638</b> |               | <b>14,028</b>              |               | <b>696</b>                  | <b>1,195</b> | <b>1,891</b> |               |



**TABLE 11:  
GENERAL  
ASSISTANCE  
PROGRAM**

**EMPLOYABLE AND UNEMPLOYABLE CASES  
AND EMERGENCY ASSISTANCE CASES RECEIVING PAYMENTS BY COUNTY  
NOVEMBER 2022**

|                   | Total Cases |                  |              |                  |               | Emergency Assistance Cases |                                   |                |              |                  |        |
|-------------------|-------------|------------------|--------------|------------------|---------------|----------------------------|-----------------------------------|----------------|--------------|------------------|--------|
|                   | Employable  | % Chng<br>(1 Yr) | Unemployable | % Chng<br>(1 Yr) | Total         | % Chng<br>(1 Yr)           | Temporary<br>Rental<br>Assistance | Other<br>GA-EA | Total        | % Chng<br>(1 Yr) |        |
| <b>ATLANTIC</b>   | 824         | -5.9%            | 155          | -17.1%           | <b>979</b>    | -7.9%                      | 53                                | 23             | <b>76</b>    | -19.1%           |        |
| <b>BERGEN</b>     | 283         | -11.3%           | 245          | 41.6%            | <b>528</b>    | 7.3%                       | 74                                | 22             | <b>96</b>    | 4.3%             |        |
| <b>BURLINGTON</b> | 297         | -15.6%           | 119          | -42.5%           | <b>416</b>    | -25.6%                     | 10                                | 84             | <b>94</b>    | -13.8%           |        |
| <b>CAMDEN</b>     | 1,125       | -23.7%           | 405          | -12.1%           | <b>1,530</b>  | -21.0%                     | 32                                | 67             | <b>99</b>    | 2.1%             |        |
| <b>CAPE MAY</b>   | 126         | 51.8%            | 43           | 7.5%             | <b>169</b>    | 37.4%                      | Δ                                 | 12             | 43           | <b>55</b>        | 120.0% |
| <b>CUMBERLAND</b> | 224         | -15.8%           | 133          | 54.7%            | <b>357</b>    | 1.4%                       | 0                                 | 11             | <b>11</b>    | 450.0%           |        |
| <b>ESSEX</b>      | 720         | -29.0%           | 207          | -29.8%           | <b>927</b>    | -29.2%                     | 8                                 | 157            | <b>165</b>   | -21.8%           |        |
| <b>GLOUCESTER</b> | 187         | 28.1%            | 118          | 4.4%             | <b>305</b>    | 17.8%                      | Δ                                 | 0              | 15           | <b>15</b>        | 114.3% |
| <b>HUDSON</b>     | 844         | -55.7%           | 257          | -47.2%           | <b>1,101</b>  | -54.0%                     | *                                 | 89             | 26           | <b>115</b>       | -34.7% |
| <b>HUNTERDON</b>  | 112         | -1.8%            | 65           | 62.5%            | <b>177</b>    | 14.9%                      | 11                                | 20             | <b>31</b>    | -13.9%           |        |
| <b>MERCER</b>     | 399         | -3.4%            | 236          | -10.6%           | <b>635</b>    | -6.2%                      | 48                                | 38             | <b>86</b>    | 10.3%            |        |
| <b>MIDDLESEX</b>  | 275         | -43.1%           | 296          | -8.1%            | <b>571</b>    | -29.1%                     | 66                                | 75             | <b>141</b>   | -16.1%           |        |
| <b>MONMOUTH</b>   | 176         | -21.8%           | 176          | 7.3%             | <b>352</b>    | -9.5%                      | 1                                 | 51             | <b>52</b>    | -33.3%           |        |
| <b>MORRIS</b>     | 185         | 33.1%            | 152          | -2.6%            | <b>337</b>    | 14.2%                      | 46                                | 48             | <b>94</b>    | 40.3%            |        |
| <b>OCEAN</b>      | 291         | -12.1%           | 203          | -6.0%            | <b>494</b>    | -9.7%                      | 30                                | 52             | <b>82</b>    | -27.4%           |        |
| <b>PASSAIC</b>    | 291         | -42.6%           | 156          | -50.5%           | <b>447</b>    | -45.6%                     | *                                 | 25             | 2            | <b>27</b>        | -59.1% |
| <b>SALEM</b>      | 77          | -39.4%           | 49           | 58.1%            | <b>126</b>    | -20.3%                     | 0                                 | 3              | <b>3</b>     | 50.0%            |        |
| <b>SOMERSET</b>   | 187         | 17.6%            | 58           | 9.4%             | <b>245</b>    | 15.6%                      | Δ                                 | 35             | 39           | <b>74</b>        | 100.0% |
| <b>SUSSEX</b>     | 24          | -51.0%           | 18           | -18.2%           | <b>42</b>     | -40.8%                     | *                                 | 0              | 2            | <b>2</b>         | -85.7% |
| <b>UNION</b>      | 586         | 3.7%             | 171          | 18.8%            | <b>757</b>    | 6.8%                       | 52                                | 236            | <b>288</b>   | 41.2%            |        |
| <b>WARREN</b>     | 80          | -32.8%           | 64           | -16.9%           | <b>144</b>    | -26.5%                     | 10                                | 26             | <b>36</b>    | -21.7%           |        |
| <b>NJ TOTAL</b>   | 7,313       | -24.4%           | 3,326        | -13.7%           | <b>10,639</b> | -21.3%                     | 602                               | 1,040          | <b>1,642</b> | -4.6%            |        |

Δ= ↑ Caseload %

\* = ↓ Caseload %



**TABLE 12:  
OFFICE OF  
CHILD SUPPORT  
SERVICES**

**OFFICE OF CHILD SUPPORT SERVICES  
QUARTERLY PERFORMANCE REPORT  
STATE SUMMARY  
TITLE IV-D SOURCE COLLECTION REPORT  
Comparison of Quarter-4 (FFY 2021 vs. FFY 2022)**

| COLLECTION SOURCE              | TOTAL<br>7/1/2021 -<br>9/30/2021 | % OF TOTAL<br>COLLECTIONS | TOTAL<br>7/1/2022 -<br>9/30/2022 | % OF TOTAL<br>COLLECTIONS | DOLLAR CHANGE          | % CHANGE       |
|--------------------------------|----------------------------------|---------------------------|----------------------------------|---------------------------|------------------------|----------------|
| FEDERAL TAX                    | \$13,351,212                     | 4.52%                     | \$5,398,777                      | 2.04%                     | \$ (7,952,435)         | -59.56%        |
| STATE TAX                      | \$3,589,417                      | 1.22%                     | \$2,387,266                      | 0.90%                     | \$ (1,202,151)         | -33.49%        |
| UIB                            | \$26,526,653                     | 8.99%                     | \$4,507,218                      | 1.70%                     | \$ (22,019,435)        | -83.01%        |
| INC WITHHOLD                   | \$182,792,079                    | 61.94%                    | \$182,713,102                    | 68.89%                    | \$ (78,977)            | -0.04%         |
| FROM OTHER STATES              | \$11,450,421                     | 3.88%                     | \$10,397,202                     | 3.92%                     | \$ (1,053,219)         | -9.20%         |
| ADMIN ENFORCEMENT              | \$6,297,192                      | 2.13%                     | \$4,636,386                      | 0.02%                     | \$ (1,660,805)         | -26.37%        |
| OTHER                          | \$51,080,910                     | 17.31%                    | \$55,190,514                     | 20.81%                    | \$ 4,109,604           | 8.05%          |
| <b>TOTAL COLLECTIONS*</b>      | <b>\$295,087,884</b>             | <b>100%</b>               | <b>\$265,230,465</b>             | <b>100%</b>               | <b>\$ (29,857,418)</b> | <b>-10.12%</b> |
| <b>DISBURSED COLLECTIONS**</b> | <b>\$257,920,003</b>             |                           | <b>\$229,364,911</b>             |                           | <b>\$ (28,555,092)</b> | <b>-11.07%</b> |

\* Includes collections on both current support and arrears.

\*\* Includes collections on both current support and arrears; also includes money sent to other states.

SOURCE: NJKiDS (Based on Federal Quarterly Report of Collections - OCSE-34A except Disbursed Collections)

Disbursed Collections obtained from Federal Data Report - OCSE-157, which is reported annually to Congress and used in the calculation of incentive dollars earned by each state.

**TABLE 13:  
OFFICE OF  
CHILD SUPPORT  
SERVICES**

**OFFICE OF CHILD SUPPORT SERVICES  
STATE SUMMARY  
TITLE IV-D PATERNITY ESTABLISHMENT REPORT**

Comparison of November (FFY 2021 vs. FFY 2022)

| County           | NOVEMBER 2021                       |                                   |                                    | NOVEMBER 2022                       |                                   |                                    | Increase or Decrease (-) from FFY 2021 to FFY 2022 |
|------------------|-------------------------------------|-----------------------------------|------------------------------------|-------------------------------------|-----------------------------------|------------------------------------|--|
|                  | Total Children Born Out of Wedlock* | Number of Paternities Established | Percent of Paternities Established | Total Children Born Out of Wedlock* | Number of Paternities Established | Percent of Paternities Established |  |
| Atlantic         | 5,509                               | 5,503                             | 99.9%                              | 5,045                               | 5,013                             | 99.4%                              | -0.5%  |
| Bergen           | 2,739                               | 2,679                             | 97.8%                              | 2,537                               | 2,485                             | 98.0%                              | 0.1%   |
| Burlington       | 4,261                               | 4,156                             | 97.5%                              | 3,852                               | 3,767                             | 97.8%                              | 0.3%   |
| Camden           | 13,914                              | 13,600                            | 97.7%                              | 12,758                              | 12,500                            | 98.0%                              | 0.2%   |
| Cape May         | 1,064                               | 1,049                             | 98.6%                              | 921                                 | 921                               | 100.0%                             | 1.4%   |
| Cumberland       | 5,914                               | 5,857                             | 99.0%                              | 5,574                               | 5,519                             | 99.0%                              | 0.0%   |
| Essex            | 21,296                              | 20,336                            | 95.5%                              | 19,401                              | 18,473                            | 95.2%                              | -0.3%  |
| Gloucester       | 3,788                               | 3,736                             | 98.6%                              | 3,401                               | 3,387                             | 99.6%                              | 1.0%   |
| Hudson           | 8,464                               | 8,228                             | 97.2%                              | 7,865                               | 7,593                             | 96.5%                              | -0.7%  |
| Hunterdon        | 202                                 | 200                               | 99.0%                              | 178                                 | 179                               | 100.6%                             | 1.6%   |
| Mercer           | 5,894                               | 5,722                             | 97.1%                              | 5,356                               | 5,194                             | 97.0%                              | -0.1%  |
| Middlesex        | 5,536                               | 5,395                             | 97.5%                              | 5,093                               | 4,960                             | 97.4%                              | -0.1%  |
| Monmouth         | 4,198                               | 4,089                             | 97.4%                              | 3,740                               | 3,640                             | 97.3%                              | -0.1%  |
| Morris           | 1,063                               | 1,050                             | 98.8%                              | 936                                 | 932                               | 99.6%                              | 0.8%   |
| Ocean            | 4,212                               | 4,127                             | 98.0%                              | 3,911                               | 3,838                             | 98.1%                              | 0.2%   |
| Passaic          | 8,677                               | 8,415                             | 97.0%                              | 7,850                               | 7,646                             | 97.4%                              | 0.4%   |
| Salem            | 2,430                               | 2,335                             | 96.1%                              | 2,352                               | 2,270                             | 96.5%                              | 0.4%   |
| Somerset         | 1,191                               | 1,157                             | 97.1%                              | 1,041                               | 1,021                             | 98.1%                              | 0.9%   |
| Sussex           | 420                                 | 424                               | 101.0%                             | 408                                 | 411                               | 100.7%                             | -0.2%  |
| Union            | 9,129                               | 8,709                             | 95.4%                              | 8,750                               | 8,316                             | 95.0%                              | -0.4%  |
| Warren           | 716                                 | 721                               | 100.7%                             | 603                                 | 602                               | 99.8%                              | -0.9%  |
| <b>NJ TOTALS</b> | <b>110,617</b>                      | <b>107,488</b>                    | <b>97.2%</b>                       | <b>101,572</b>                      | <b>98,667</b>                     | <b>97.1%</b>                       | <b>0.0%</b>  |

SOURCE: NJKiDS (Based on Federal Performance Measures - OCSE-157)

\* Information on Out of Wedlock Births obtained from NJ Bureau of Vital Statistics

**TABLE 14:  
OFFICE OF  
CHILD SUPPORT  
SERVICES**

**OFFICE OF CHILD SUPPORT SERVICES  
STATE SUMMARY  
TITLE IV-D REPORT OF CASES WITH ORDERS  
Comparison of November (FFY 2021 vs. FFY 2022)**

| County           | NOVEMBER 2021  |                   |                        | NOVEMBER 2022  |                   |                        | Increase or Decrease (-) from FFY 2021 to FFY 2022 |
|------------------|----------------|-------------------|------------------------|----------------|-------------------|------------------------|--|
|                  | Total Cases    | Cases with Orders | % of Cases with Orders | Total Cases    | Cases with Orders | % of Cases with Orders |  |
| Atlantic         | 10,330         | 9,563             | 92.6%                  | 9,775          | 9,067             | 92.8%                  | 0.2%   |
| Bergen           | 10,419         | 10,148            | 97.4%                  | 10,057         | 9,761             | 97.1%                  | -0.3%  |
| Burlington       | 11,362         | 10,767            | 94.8%                  | 11,076         | 10,209            | 92.2%                  | -2.6%  |
| Camden           | 25,349         | 24,153            | 95.3%                  | 24,227         | 22,748            | 93.9%                  | -1.4%  |
| Cape May         | 2,621          | 2,499             | 95.3%                  | 2,469          | 2,350             | 95.2%                  | -0.2%  |
| Cumberland       | 10,665         | 10,244            | 96.1%                  | 10,334         | 9,740             | 94.3%                  | -1.8%  |
| Essex            | 35,338         | 31,080            | 88.0%                  | 33,910         | 29,419            | 86.8%                  | -1.2%  |
| Gloucester       | 9,133          | 8,777             | 96.1%                  | 8,721          | 8,316             | 95.4%                  | -0.7%  |
| Hudson           | 17,345         | 15,723            | 90.6%                  | 16,925         | 15,118            | 89.3%                  | -1.3%  |
| Hunterdon        | 1,233          | 1,160             | 94.1%                  | 1,153          | 1,077             | 93.4%                  | -0.7%  |
| Mercer           | 11,507         | 10,532            | 91.5%                  | 11,259         | 10,032            | 89.1%                  | -2.4%  |
| Middlesex        | 15,075         | 14,208            | 94.2%                  | 14,788         | 13,675            | 92.5%                  | -1.8%  |
| Monmouth         | 11,448         | 10,940            | 95.6%                  | 10,812         | 10,149            | 93.9%                  | -1.7%  |
| Morris           | 5,089          | 4,925             | 96.8%                  | 4,814          | 4,671             | 97.0%                  | 0.3%   |
| Ocean            | 12,695         | 12,259            | 96.6%                  | 12,189         | 11,694            | 95.9%                  | -0.6%  |
| Passaic          | 16,725         | 14,859            | 88.8%                  | 15,975         | 14,018            | 87.7%                  | -1.1%  |
| Salem            | 3,692          | 3,540             | 95.9%                  | 3,566          | 3,360             | 94.2%                  | -1.7%  |
| Somerset         | 3,978          | 3,744             | 94.1%                  | 3,753          | 3,464             | 92.3%                  | -1.8%  |
| Sussex           | 2,250          | 2,219             | 98.6%                  | 2,212          | 2,153             | 97.3%                  | -1.3%  |
| Union            | 16,225         | 15,419            | 95.0%                  | 15,695         | 14,812            | 94.4%                  | -0.7%  |
| Warren           | 2,392          | 2,282             | 95.4%                  | 2,196          | 2,082             | 94.8%                  | -0.6%  |
| <b>NJ TOTALS</b> | <b>234,871</b> | <b>219,041</b>    | <b>93.3%</b>           | <b>225,906</b> | <b>207,915</b>    | <b>92.0%</b>           | <b>-1.2%</b>                                       |

SOURCE: NJKiDS (Based on Federal Performance Measures - OCSE-157)

**TABLE 15:  
OFFICE OF  
CHILD SUPPORT  
SERVICES**

**OFFICE OF CHILD SUPPORT SERVICES  
STATE SUMMARY  
TITLE IV-D COLLECTIONS ON CURRENT SUPPORT**

Comparison of November (FFY 2021 vs. FFY 2022)

| County           | NOVEMBER 2021             |                                   |                       | NOVEMBER 2022             |                                   |                       | Increase or Decrease (-) from FFY 2021 to FFY 2022 |
|------------------|---------------------------|-----------------------------------|-----------------------|---------------------------|-----------------------------------|-----------------------|--|
|                  | Total Current Support Due | Total Current Support Distributed | Total Collection Rate | Total Current Support Due | Total Current Support Distributed | Total Collection Rate |  |
| Atlantic         | \$3,440,836               | \$2,152,827                       | 62.6%                 | \$3,353,717               | \$2,088,788                       | 62.3%                 | -0.3%  |
| Bergen           | \$7,468,189               | \$5,577,659                       | 74.7%                 | \$7,171,266               | \$5,339,948                       | 74.5%                 | -0.2%  |
| Burlington       | \$5,077,048               | \$3,458,575                       | 68.1%                 | \$4,838,877               | \$3,269,251                       | 67.6%                 | -0.6%  |
| Camden           | \$7,295,098               | \$4,240,602                       | 58.1%                 | \$6,939,571               | \$4,021,586                       | 58.0%                 | -0.2%  |
| Cape May         | \$973,080                 | \$642,248                         | 66.0%                 | \$899,079                 | \$596,037                         | 66.3%                 | 0.3%   |
| Cumberland       | \$2,794,206               | \$1,594,903                       | 57.1%                 | \$2,695,501               | \$1,564,655                       | 58.0%                 | 1.0%   |
| Essex            | \$9,626,545               | \$5,571,466                       | 57.9%                 | \$9,287,011               | \$5,410,040                       | 58.3%                 | 0.4%   |
| Gloucester       | \$3,752,310               | \$2,516,708                       | 67.1%                 | \$3,540,855               | \$2,313,383                       | 65.3%                 | -1.7%  |
| Hudson           | \$6,670,974               | \$4,394,943                       | 65.9%                 | \$6,458,851               | \$4,172,201                       | 64.6%                 | -1.3%  |
| Hunterdon        | \$1,077,408               | \$881,063                         | 81.8%                 | \$963,155                 | \$815,441                         | 84.7%                 | 2.9%   |
| Mercer           | \$3,617,678               | \$2,268,933                       | 62.7%                 | \$3,518,604               | \$2,221,520                       | 63.1%                 | 0.4%   |
| Middlesex        | \$6,825,028               | \$4,615,842                       | 67.6%                 | \$6,457,280               | \$4,378,719                       | 67.8%                 | 0.2%   |
| Monmouth         | \$6,248,557               | \$4,540,717                       | 72.7%                 | \$5,821,329               | \$4,158,565                       | 71.4%                 | -1.2%  |
| Morris           | \$3,912,589               | \$2,863,067                       | 73.2%                 | \$3,718,247               | \$2,722,447                       | 73.2%                 | 0.0%   |
| Ocean            | \$5,861,452               | \$4,136,203                       | 70.6%                 | \$5,610,888               | \$3,940,529                       | 70.2%                 | -0.3%  |
| Passaic          | \$5,894,868               | \$3,649,885                       | 61.9%                 | \$5,562,994               | \$3,469,992                       | 62.4%                 | 0.5%   |
| Salem            | \$986,814                 | \$581,444                         | 58.9%                 | \$987,375                 | \$581,333                         | 58.9%                 | 0.0%   |
| Somerset         | \$2,611,599               | \$2,098,175                       | 80.3%                 | \$2,347,109               | \$1,942,559                       | 82.8%                 | 2.4%   |
| Sussex           | \$1,590,456               | \$1,213,430                       | 76.3%                 | \$1,506,223               | \$1,129,644                       | 75.0%                 | -1.3%  |
| Union            | \$6,265,910               | \$4,249,038                       | 67.8%                 | \$6,172,861               | \$4,090,611                       | 66.3%                 | -1.5%  |
| Warren           | \$1,110,013               | \$807,064                         | 72.7%                 | \$1,060,854               | \$770,071                         | 72.6%                 | -0.1%  |
| <b>NJ TOTALS</b> | <b>\$93,100,659</b>       | <b>\$62,054,791</b>               | <b>66.7%</b>          | <b>\$88,911,647</b>       | <b>\$58,997,321</b>               | <b>66.4%</b>          | <b>-0.3%</b>                                       |

SOURCE: NJKiDS (Based on Federal Performance Measures - OCSE-157)

**TABLE 16:  
OFFICE OF  
CHILD SUPPORT  
SERVICES**

**OFFICE OF CHILD SUPPORT SERVICES  
STATE SUMMARY  
TITLE IV-D CASES ARREARS COLLECTION REPORT**

Comparison of November (FFY 2021 vs. FFY 2022)

| County           | NOVEMBER 2021            |                        |                                     | NOVEMBER 2022            |                        |                                     | Increase or Decrease (-) from FFY 2021 to FFY 2022 |
|------------------|--------------------------|------------------------|-------------------------------------|--------------------------|------------------------|-------------------------------------|--|
|                  | Total Cases with Arrears | Total Amount Collected | Average Arrears Collection per Case | Total Cases with Arrears | Total Amount Collected | Average Arrears Collection per Case |  |
| Atlantic         | 6,434                    | \$659,582              | \$102.52                            | 6,048                    | \$665,733              | \$110.07                            | \$7.56   |
| Bergen           | 6,595                    | \$1,063,047            | \$161.19                            | 6,419                    | \$1,069,627            | \$166.63                            | \$5.44   |
| Burlington       | 7,170                    | \$940,760              | \$131.21                            | 6,724                    | \$947,615              | \$140.93                            | \$9.72   |
| Camden           | 14,807                   | \$1,448,433            | \$97.82                             | 13,755                   | \$1,462,286            | \$106.31                            | \$8.49   |
| Cape May         | 1,676                    | \$203,408              | \$121.37                            | 1,567                    | \$205,096              | \$130.88                            | \$9.52   |
| Cumberland       | 6,519                    | \$645,409              | \$99.00                             | 5,983                    | \$651,491              | \$108.89                            | \$9.89   |
| Essex            | 19,405                   | \$2,209,724            | \$113.87                            | 18,025                   | \$2,227,863            | \$123.60                            | \$9.72   |
| Gloucester       | 5,815                    | \$645,641              | \$111.03                            | 5,431                    | \$651,183              | \$119.90                            | \$8.87   |
| Hudson           | 10,689                   | \$1,161,854            | \$108.70                            | 10,254                   | \$1,172,217            | \$114.32                            | \$5.62   |
| Hunterdon        | 741                      | \$172,381              | \$232.63                            | 665                      | \$173,279              | \$260.57                            | \$27.94  |
| Mercer           | 7,126                    | \$871,208              | \$122.26                            | 6,718                    | \$878,048              | \$130.70                            | \$8.44   |
| Middlesex        | 9,408                    | \$1,104,778            | \$117.43                            | 8,947                    | \$1,113,842            | \$124.49                            | \$7.06   |
| Monmouth         | 7,125                    | \$1,203,472            | \$168.91                            | 6,520                    | \$1,210,161            | \$185.61                            | \$16.70  |
| Morris           | 3,335                    | \$600,873              | \$180.17                            | 3,102                    | \$604,155              | \$194.76                            | \$14.59  |
| Ocean            | 7,762                    | \$998,624              | \$128.66                            | 7,258                    | \$1,006,011            | \$138.61                            | \$9.95   |
| Passaic          | 10,018                   | \$1,141,688            | \$113.96                            | 9,361                    | \$1,151,163            | \$122.97                            | \$9.01   |
| Salem            | 2,192                    | \$202,991              | \$92.61                             | 2,065                    | \$205,149              | \$99.35                             | \$6.74   |
| Somerset         | 2,454                    | \$396,650              | \$161.63                            | 2,304                    | \$399,116              | \$173.23                            | \$11.59  |
| Sussex           | 1,458                    | \$263,456              | \$180.70                            | 1,409                    | \$265,046              | \$188.11                            | \$7.41   |
| Union            | 10,003                   | \$1,457,665            | \$145.72                            | 9,588                    | \$1,467,399            | \$153.05                            | \$7.32   |
| Warren           | 1,520                    | \$188,058              | \$123.72                            | 1,389                    | \$189,571              | \$136.48                            | \$12.76  |
| <b>NJ TOTALS</b> | <b>142,252</b>           | <b>\$17,579,702</b>    | <b>\$123.58</b>                     | <b>133,532</b>           | <b>\$17,716,049</b>    | <b>\$132.67</b>                     | <b>\$9.09</b>                                      |

SOURCE: OCSE-157 Child Support Enforcement Annual Data Report

Table 17

## WORK FIRST NEW JERSEY STATISTICAL SUMMARY

| COUNTY             | EMPLOYMENT DIRECTED ACTIVITIES |                    |            | November 2022                  |                                 |                        | CLOSED FOR EMPLOYMENT THIS MONTH | POST ASSISTANCE CHILD CARE |
|--------------------|--------------------------------|--------------------|------------|--------------------------------|---------------------------------|------------------------|----------------------------------|----------------------------|
|                    | CWEP                           | ALL OTHER TRAINING | JOB SEARCH | EMPLOYED OPEN (WFNJ RECIPIENT) | SUPPORT SERVICES ON ACTIVE CASE |                        |                                  |                            |
|                    |                                |                    |            |                                | CHILD CARE                      | TRAINING REL. EXPENSES |                                  |                            |
| ATLANTIC           | 19                             | 45                 | 13         | 45                             | 32                              | 65                     | 6                                | 15                         |
| BERGEN             | 19                             | 6                  | 67         | 13                             | 35                              | 1                      | 5                                | 1                          |
| BURLINGTON         | 95                             | 19                 | 60         | 19                             | 30                              | 10                     | 2                                | 7                          |
| CAMDEN             | 45                             | 106                | 6          | 64                             | 67                              | 2                      | 7                                | 10                         |
| CAPE MAY           | 0                              | 16                 | 2          | 5                              | 1                               | 5                      | 3                                | 3                          |
| CUMBERLAND         | 0                              | 16                 | 22         | 13                             | 15                              | 33                     | 7                                | 2                          |
| ESSEX              | 41                             | 187                | 1          | 87                             | 63                              | 83                     | 17                               | 51                         |
| GLOUCESTER         | 22                             | 8                  | 1          | 25                             | 16                              | 6                      | 9                                | 3                          |
| HUDSON             | 1                              | 350                | 32         | 110                            | 199                             | 114                    | 29                               | 12                         |
| HUNTERDON          | 0                              | 0                  | 0          | 0                              | 3                               | 0                      | 1                                | 2                          |
| MERCER             | 0                              | 94                 | 0          | 49                             | 98                              | 8                      | 11                               | 49                         |
| MIDDLESEX          | 0                              | 40                 | 79         | 23                             | 22                              | 0                      | 5                                | 6                          |
| MONMOUTH           | 3                              | 14                 | 8          | 21                             | 20                              | 3                      | 1                                | 16                         |
| MORRIS             | 0                              | 3                  | 1          | 0                              | 1                               | 0                      | 2                                | 0                          |
| OCEAN              | 1                              | 128                | 0          | 9                              | 18                              | 12                     | 2                                | 12                         |
| PASSAIC            | 16                             | 56                 | 0          | 23                             | 31                              | 5                      | 12                               | 9                          |
| SALEM              | 0                              | 11                 | 8          | 6                              | 8                               | 4                      | 2                                | 0                          |
| SOMERSET           | 8                              | 7                  | 13         | 23                             | 12                              | 21                     | 3                                | 3                          |
| SUSSEX             | 0                              | 0                  | 0          | 2                              | 1                               | 0                      | 1                                | 0                          |
| UNION              | 56                             | 64                 | 0          | 10                             | 16                              | 2                      | 1                                | 1                          |
| WARREN             | 0                              | 8                  | 0          | 6                              | 2                               | 0                      | 0                                | 4                          |
| <b>STATE TOTAL</b> | <b>326</b>                     | <b>1,178</b>       | <b>313</b> | <b>553</b>                     | <b>690</b>                      | <b>374</b>             | <b>126</b>                       | <b>206</b>                 |

Data is derived from NJ Division of Family Development's FAMIS Reports RM064-01 &amp; RM703-51, AdHoc Reports 5549 &amp; 5598 and SDW Report WR00022WZ\_CC

**DIVISION OF FAMILY DEVELOPMENT CURRENT PROGRAM STATISTICS  
NOVEMBER 2022**

## **ACRONYMS**

**EMERGENCY ASSISTANCE (EA)** - Payments to those eligible for WFNJ/TANF or WFNJ/GA, authorized during the 30 consecutive days immediately following the emergency (defined as a substantial loss of shelter, food, clothing, or household furnishings by fire, flood or other similar disaster) or if eligible individual or family is in an imminent or actual state of homelessness.

**NJ SNAP** - Formerly the Food Stamp Program, now known as NJ SNAP (NJ Supplemental Nutrition Assistance Program) authorized by Congress as a nutritional supplement program to provide low income households with more food of greater variety and better nutrition. Program eligibility is based on household income, resources, and expenses for medical, shelter, and dependent care. CWA staff refers certain recipients to the New Jersey Department of Labor for participation in the Food Stamp Employment and Training Program.

**FAMIS:** Family Assistance Management Information System

**GAAS:** General Assistance Automated System

**NJKiDS:** New Jersey Kids Deserve Support (Child Support Information Management System)

**NJ MMIS SHARED DATA WAREHOUSE:** The Shared Data Warehouse (SDW) is the repository for New Jersey's DFD and Medicaid data. Since 2003, OptumInsight has administered the SDW and provided access to the data through a reporting tool known as Business Objects.

**OMEGA:** Online Management of Economic Goal Achievement

**SSI-EA:** Supplemental Security Income-Emergency Assistance

**WFNJ:** Work First New Jersey - Fully implemented July 1, 1997, this is New Jersey's welfare reform program which responds to the requirements of the Federal Personal Responsibility and Work Opportunity Reconciliation Act (**PRWORA**) of 1996. PRWORA established Temporary Assistance for Needy Families (**TANF**) as the replacement for AFDC cash assistance. WFNJ includes two segments, **WFNJ/TANF** for families with children, and **WFNJ/GA** (General Assistance) for single adults and couples without dependent children. WFNJ emphasizes achieving self-sufficiency and limits lifetime receipt of financial assistance to a total of five years.

**DIVISION OF FAMILY DEVELOPMENT CURRENT PROGRAM STATISTICS  
NOVEMBER 2022**

## **EXPLANATORY NOTES**

The Department of Human Services Division of Family Development provides basic income and an opportunity to achieve self-sufficiency for individuals and families served by the Division's programs. The Division provides leadership, direction and supervision to those public agencies responsible for administering those programs and plans for and develops policies to promote self-sufficiency.

### **WFNJ STATISTICAL SUMMARY (TABLE 17)**

**Employment Directed Activities (EDA)** - From Activities Summary Report (OMEGA report # RM064). Unduplicated count of persons participating in Community Work Experience Program (CWEP), All Other Training, or Job Search.

**Number of Persons Employed This Month, Still Receiving TANF** - Individuals with open "empl" activity on OMEGA. Ad hoc report.

**Participants Receiving Child Care Services** - From Issuance Disbursement Summary (OMEGA report # RM703). Total number of active participants who show receipt of Child Care.

**Number of Persons Closed on FAMIS Due to Employment** - From FAMIS report #5549-RM-2

**Post TANF and Receiving Child Care** - Persons no longer in receipt of TANF but still receiving child care. From Share Data Warehouse Child Care case count based on Child Care payments (SDW report WR00022WZ\_CC ).