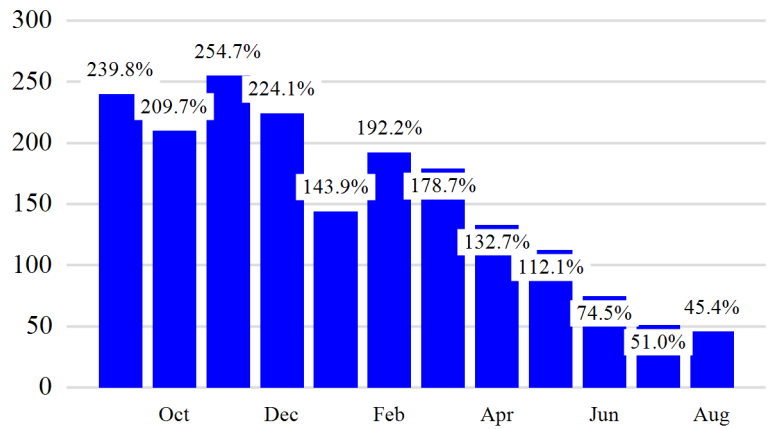


Revenue Passengers

	Curr Month	% Change
	12,061,135	45.4% ▲
Domestic	7,799,960	36.0%
International	4,261,175	66.7%
Non-Revenue	331,298	62.5%

Load Factors	Curr Month	Avg Load Factor
Domestic	79.9%	81.9%
International	86.0%	

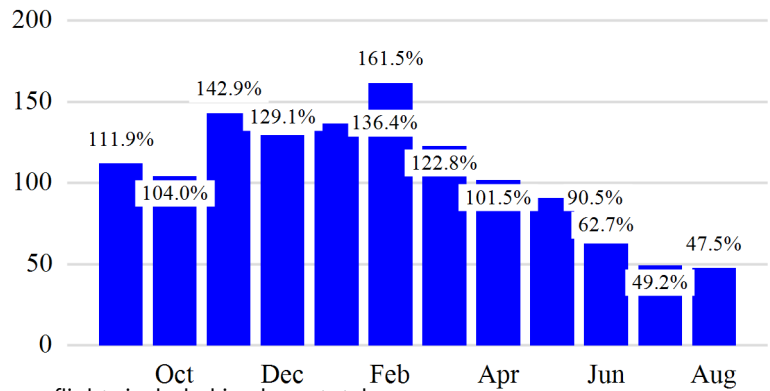
Year over Year % Change in Revenue Passengers - 12 Months



Total Flights

	Curr Month	% Change
	104,620	48.7% ▲
Excl GA	100,242	47.5% ▲
Domestic	76,069	50.3%
International	24,173	39.2%
Gen Aviation	4,378	83.8%
Cargo Flights*	3,265	-22.2%

Year over Year % Change in Total Flights (Excl GA) - 12 Months

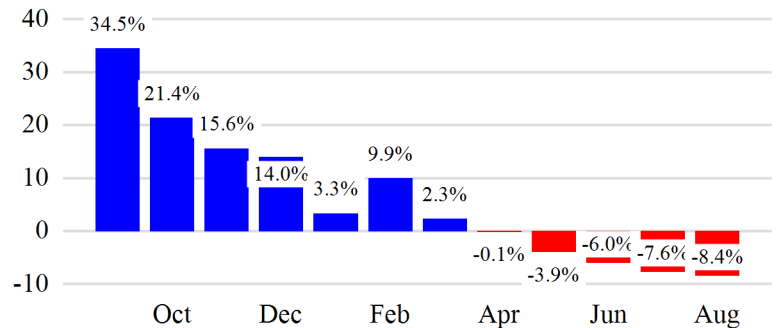


* Cargo flights included in above totals

Cargo (Short Tons)

	Curr Month	% Change
	189,486	-8.4% ▼
Domestic	80,558	-7.3%
International	108,928	-9.2%
Mail	11,469	-2.1%

Year over Year % Change in Cargo - 12 Months



Top 5 Declines in Revenue Passengers by Airline

Airline	Pax Decline	% Decline
FRONTIER AIRLINES	(71,296)	-63.0%
Avianca El Salvador	(9,591)	-36.0%
ETHIOPIAN AIRLINES	(7,817)	-60.0%
COPA AIRLINES	(6,783)	-20.0%
EASTERN	(6,650)	-93.0%

Top 5 Increases in Revenue Passengers by Airline

Airline	Pax Increase	% Increase
United	758,479	38.0%
AMERICAN	665,221	71.0%
DELTA	590,989	29.0%
JETBLUE AIRWAYS	381,750	23.0%
SOUTHWEST AIRLINES	149,092	113.0%

Airport Summary Statistics

JFK Summary

	Current Month	YoY %
Total Revenue Pax	5,436,712	48.0
Total Flights Including GA	39,064	35.0
Total Cargo (Short Tons)	127,647	-9.2

EWR Summary

	Current Month	YoY %
Total Revenue Pax	3,959,664	27.0
Total Flights Including GA	33,218	27.0
Total Cargo (Short Tons)	59,315	-6.6

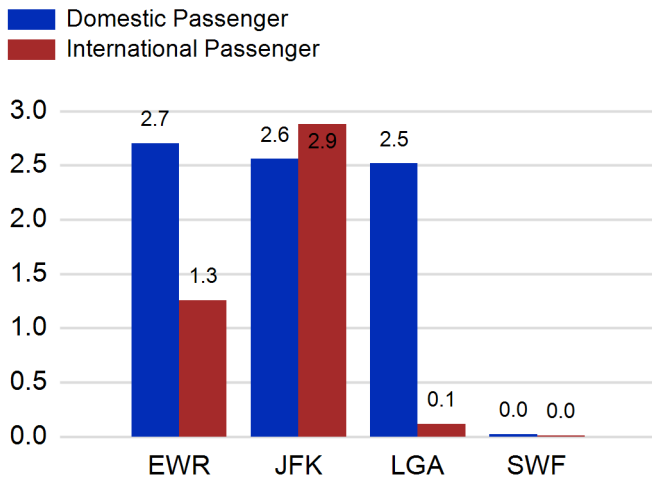
LGA Summary

	Current Month	YoY %
Total Revenue Pax	2,631,451	74.0
Total Flights Including GA	28,958	109.0
Total Cargo (Short Tons)	517	-2.8

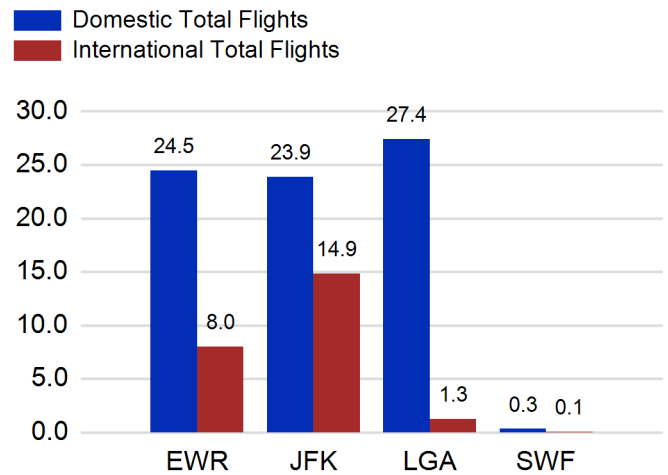
SWF Summary

	Current Month	YoY %
Total Revenue Pax	33,308	90.0
Total Flights Including GA	3,380	99.0
Total Cargo (Short Tons)	2,006	-13.0

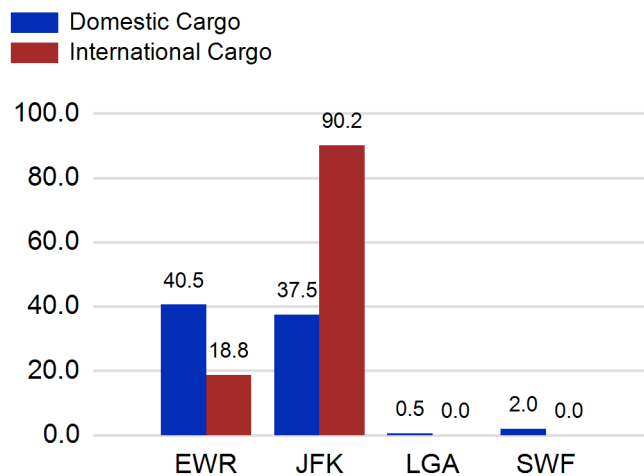
Total Passengers by Airport (Millions)



Total Flights by Airport (Thousands)



Total Cargo by Airport (Thousands of Short Tons)



12 Months Ending Passenger & Freight Statistics

Top 20 Airlines Ranking by Passengers & Freight: 12 Months Ending Aug 2022

Airline Name	Domestic	International	Total Pax	% of Tot	Airline Name	Short Tons	% of Tot
UNITED	22,535,314	6,628,426	29,163,740	25.13%	FEDERAL EXPRESS	427,258	18.02%
DELTA	22,245,201	4,065,813	26,311,014	22.67%	UNITED PARCEL	211,539	8.92%
JETBLUE AIRWAYS	14,225,559	5,363,573	19,589,132	16.88%	United	211,482	8.92%
AMERICAN	13,570,992	2,619,136	16,190,128	13.95%	DELTA	101,264	4.27%
SPIRIT AIRLINES	3,684,797	0	3,684,797	3.17%	AMERICAN	93,865	3.96%
SOUTHWEST AIRLINES	2,607,346	0	2,607,346	2.25%	KALITTA AIR LLC	86,180	3.63%
ALASKA AIRLINES	2,023,990	0	2,023,990	1.74%	ATLAS AIR	66,200	2.79%
AIR CANADA	0	950,542	950,542	0.82%	CARGOLUX AIRLINES	62,048	2.62%
BRITISH AIRWAYS	0	904,260	904,260	0.78%	KOREAN	59,640	2.52%
EMIRATES AIRLINES	0	862,470	862,470	0.74%	AIR TRANSPORT INT'L.(BAX Inc.)	58,481	2.47%
AIR FRANCE	0	819,954	819,954	0.71%	ABX AIR INC	58,241	2.46%
FRONTIER AIRLINES	709,171	27,835	737,006	0.63%	CHINA AIRLINES (CAL)	50,026	2.11%
TURKISH AIR	0	674,686	674,686	0.58%	TURKISH AIR	45,229	1.91%
LUFTHANSA CARGO	0	647,670	647,670	0.56%	BRITISH AIRWAYS	39,933	1.68%
VIRGIN ATLANTIC	0	639,606	639,606	0.55%	CATHAY PACIFIC	35,074	1.48%
Avianca Cargo	0	621,379	621,379	0.54%	LUFTHANSA CARGO	34,162	1.44%
AER LINGUS	0	467,955	467,955	0.40%	VIRGIN ATLANTIC	33,575	1.42%
QATAR AIRWAYS	0	437,619	437,619	0.38%	EVA	32,743	1.38%
EL AL	0	425,705	425,705	0.37%	SAUDI ARABIAN AIRLINES	29,689	1.25%
TAM BRAZILIAN AIRLINES	0	411,942	411,942	0.35%	EUROPEAN AIR TRANSPORT	27,632	1.17%

Passengers & Freight by Market - 12 Months Ending

Market	Passengers	Freight (Short Tons)
TRANSATLANTIC	18,160,258	932,131
CANADA	1,835,128	1,781
CARIBBEAN + BERMUDA	7,270,394	15,328
CENTRAL AND SOUTH AMERICA	3,764,332	47,038
DOMESTIC	79,800,566	1,015,861
MEXICO	2,133,878	10,065
TRANSPACIFIC	774,929	340,095
PUERTO RICO	2,324,522	8,790

Additional Data

Airline Schedules (ADI): Non-Stop Destinations

	Region	Flights (Daily)	Cities
Domestic	Domestic	2468.3	114
	Puerto Rico	34.3	3
	Total	2,502.6	117.00
International	Canada	139.6	7
	Caribbean & Bermuda	155.2	23
	Central & South America	72.2	17
	Mexico	43.5	5
	Trans-Atlantic	347.3	63
	Trans-Pacific	24.0	8
	Total	781.8	123.00
Total	3,284.4	240.00	

Airline Schedules (ADI): Carriers & Aircraft Type

	Aircraft Type	Flights (Daily)	Carriers
Domestic	Commuter	980.4	4
	General Aviation	2.0	1
	Narrow Body	1450.0	10
	Wide Body	70.2	4
Total	Total	2,502.6	19.00
International	Commuter	110.9	5
	Narrow Body	321.3	23
	Wide Body	349.6	53
	Total	781.8	81.00
Total	Total	3,284.4	100.00

Passenger Demographics (ACI ASQ Surveys - 2021)

Connect		Trip Type		Gender	
Local Origin/Destination	78.6%	Business	14.0%	M	49.6%
Connecting	21.4%	Leisure	86.0%	F	50.4%
Transport Mode		Annual Flights		Residency	
Bus/Shuttle	4.7%	1-2	61.5%	United States	81.0%
Other	18.7%	3-5	24.9%	Other	19.0%
Private/Company Car	37.5%	6-10	9.0%		
Rail/Subway	7.3%	11-20	2.8%		
Rental Car	4.6%	21+	1.8%		
Taxi/Limo	27.2%				

Ground Transportation

	Curr Month	% Change		Curr Month	% Change
<i>Paid Parked Cars</i>	440,448	7.7	<i>Total Air Train Passengers</i>	2,617,010	52.4
<i>GTC Bookings</i>	0		<i>Paid Howard Beach Passengers</i>	153,900	97.8
<i>Airport Coach Passengers</i>	33,911	112.7	<i>Paid Jamaica Passengers</i>	474,959	64.8
<i>Taxis Dispatched</i>	371,162	33.9	<i>Paid EWR Passengers</i>	202,137	46.7
			<i>On-Airport (Unpaid) Passengers</i>	1,786,014	47.2

Airlines for American Carriers (USA)

	Curr Month	% Change
<i>Freight:revenue ton miles (000)</i>	0	

Regional Airports: Other

	Curr Month	% Change
<i>TEB flight movements</i>	8,613	-10.1
<i>ISP Total passengers</i>	104,994	-12.5
<i>HPN Total passengers</i>	172,938	86.6