

The New Jersey Department of Education (NJDOE) is pleased to present these annual reports of School Performance. These reports are designed to inform parents, educators and communities about how well a school is performing and preparing its students for college and careers.

In particular, the School Performance Reports seek to:

- **Focus** attention on metrics that are indicative of college and career readiness.
- **Benchmark** a school's performance against other peer schools that are educating similar students, against statewide outcomes, and against state targets to illuminate and build upon a school's strengths and identify areas for improvement.
- **Improve** educational outcomes for students by providing both longitudinal and growth data so that progress can be measured as part of an individual school's efforts to engage in continuous improvement.

While the New Jersey School Performance Reports seek to bring more information to educators and stakeholders about the performance of schools, they do not seek to distill the performance of schools into a single metric, a single score, or a simplified conclusion. Instead, the intention is that educators and stakeholders will engage in deep, lengthy conversations about the full range of the data presented. As educators know well, measuring school performance is both an art and a science. While the School Performance Report brings attention to important student outcomes, NJDOE does not collect data about other essential elements of a school, such as the provision of opportunities to participate and excel in extracurricular activities; the development of non-cognitive skills like time management and perseverance; the pervasiveness of a positive school culture or climate; or the attainment of other employability and technical skills, as many of these data are beyond both the capacity and resources of schools to measure and collect well.

To learn more about New Jersey's school accountability system, please visit: <http://www.nj.gov/education/educators/>.

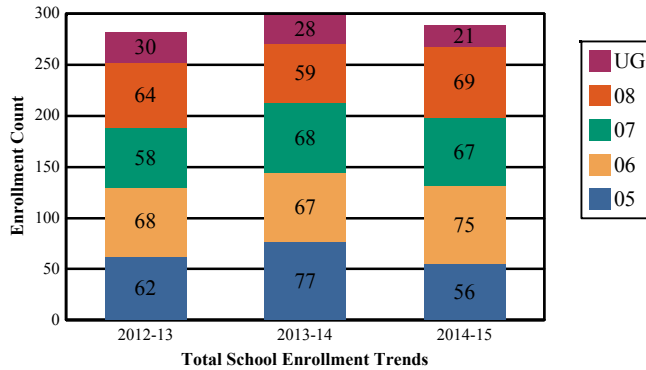
DEMOGRAPHIC INFORMATION

MONMOUTH
OCEANPORT BORO

GRADE SPAN 05-08

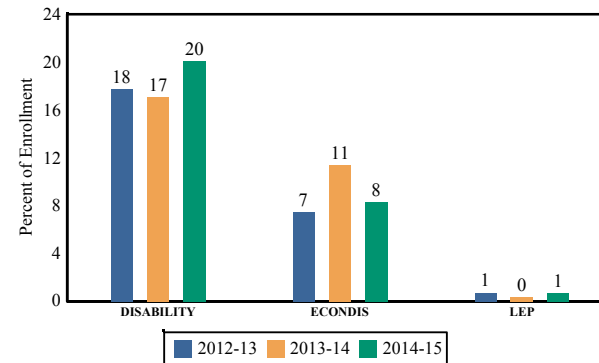
Enrollment by Grade

This graph presents the count of students who were 'on roll' by grade in October of each school year.



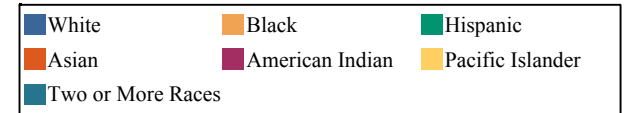
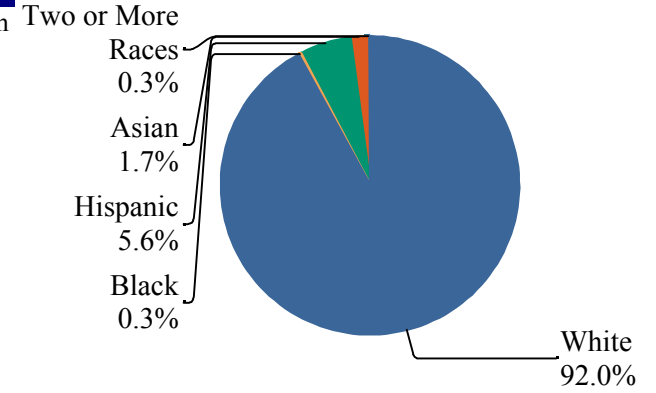
Enrollment Trends by Program Participation

This graph presents the percentages of students by program participation who were 'on roll' in October of each school year.



Enrollment by Ethnic/Racial Subgroup

This graph presents the percentages of enrollment for each subgroup defined by the No Child Left Behind Act of 2001.

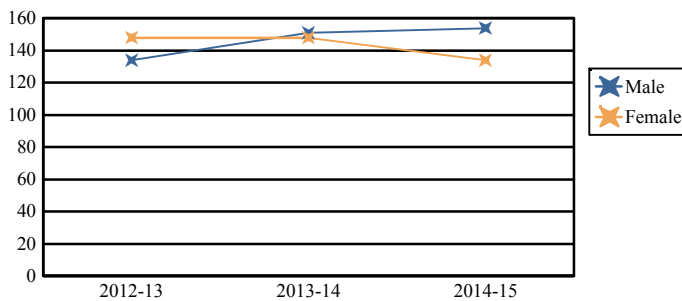


Note: "UG" represents the count of students who are 'on roll' in this school but who are educated in ungraded classrooms, meaning that the classrooms may contain students from multiple grade levels.

Total School Enrollment	
2012-13	282
2013-14	299
2014-15	288

Enrollment by Gender

This graph presents the count of students by gender who were 'on roll' in October of each school year.



Current Year Enrollment by Program Participation

2014-15	Count of Students	% of Enrollment
Students with Disability	58	20%
Economically Disadvantaged Students	24	8.3%
English Language Learners	2	0.7%

Language Diversity

This table presents the percentage of students who primarily speak each language in their home.

2014-15	Percent
English	96.9%
Chinese	1.8%
Spanish	1.4%

	Male	Female
2012-13	134	148
2013-14	151	148
2014-15	154	134

ACADEMIC ACHIEVEMENT

MONMOUTH
OCEANPORT BORO

GRADE SPAN 05-08

MAPLE PLACE MIDDLE SCHOOL
MAPLE PLACE 2 MAPLE PLACE
OCEANPORT, NJ 07757-1600

The Academic Achievement section measures the content knowledge that students have in English Language Arts/Literacy (ELA/L) and Math as demonstrated in the 2014-2015 *Partnership for Assessment of Readiness for College and Careers* (PARCC) assessments. The below chart consist of three columns. The first column - Schoolwide Performance - includes the percentage of students in ELA/L and Math who met or exceeded grade level expectations. The middle column - Peer School Percentile - indicates how the school's outcomes compared to its peers. The last column - Statewide Percentile - indicates how the school's outcomes compared to schools across the state.

Academic Achievement Indicators	Schoolwide Performance	Peer Percentile	State Percentile
English Language Arts/Literacy Met or Exceeded Expectation	53%	10	59
Math Met or Exceeded Expectation	37%		

ESEA Waiver - English Language Arts/Literacy

This table presents, for each subgroup in the school, the total number of valid test scores, the percentage of students who met or exceeded expectations, the assessment participation goal, and the participation rate. The participation goal is established as 95% by the United States Department of Education.

Subgroups	Valid Scores	% Meeting Standards	Participation Goal	Participation Rate	Met Participation?
Schoolwide	200	53%	95%	72.4%	NO
White	183	53.6%	95%	71.9%	NO
African American	-	-	--	--	--
Hispanic	-	-	--	--	--
American Indian	-	-	--	--	--
Asian	-	-	--	--	--
Two or More Races	-	-	--	--	--
Students with Disability	36	27.8%	95%	63.3%	NO
English Language Learners	-	-	--	--	--
Economically Disadvantaged Students	-	-	--	--	--

YES* = Met Participation Rate (Participation Averaging applied)

Data is presented for subgroups when the count is high enough under ESEA Waiver suppression rules.

ACADEMIC ACHIEVEMENT

MONMOUTH
OCEANPORT BORO

GRADE SPAN 05-08

MAPLE PLACE MIDDLE SCHOOL
MAPLE PLACE 2 MAPLE PLACE
OCEANPORT, NJ 07757-1600

ESEA Waiver - Math

This table presents, for each subgroup in the school, the total number of valid test scores, the percentage of students who met or exceeded expectations, the assessment participation goal, and the participation rate. The participation goal is established as 95% by the United States Department of Education.

Subgroups	Valid Scores	% Meeting Standards	Participation Goal	Participation Rate	Met Participation?
Schoolwide	200	36.5%	95%	72.4%	NO
White	183	38.8%	95%	71.9%	NO
African American	-	-	--	--	--
Hispanic	-	-	--	--	--
American Indian	-	-	--	--	--
Asian	-	-	--	--	--
Two or More Races	-	-	--	--	--
Students with Disability	36	16.7%	95%	64.4%	NO
English Learner Students	-	-	--	--	--
Economically Disadvantaged Students	-	-	--	--	--

YES* = Met Participation Rate (Participation Averaging applied)

Data is presented for subgroups when the count is high enough under ESEA Waiver suppression rules.

ACADEMIC ACHIEVEMENT

MONMOUTH
OCEANPORT BORO

GRADE SPAN 05-08

MAPLE PLACE MIDDLE SCHOOL
MAPLE PLACE 2 MAPLE PLACE
OCEANPORT, NJ 07757-1600

PARCC Performance Level

The PARCC assesses how well students have learned grade-level material in English Language Arts/Literacy (ELA/L) and Math. The tests include questions that measure students' fundamental skills and knowledge, and require them to think critically, solve problems and support or explain their answers.

The PARCC reports students' overall scale scores that range from 650 to 850. To determine whether students have met academic expectations for their grade level/course in ELA/L and Math, students' overall scale scores are categorized into five Performance Levels. Students performing at levels 4 and 5 (met or exceeded expectations) have demonstrated readiness for the next grade level/course, and are on track for college and careers.

Five Performance Levels				
Level 1: Did Not Yet Meet Expectations <i>(Min. 650)</i>	Level 2: Partially Met Expectations	Level 3: Approached Expectations	Level 4: Met Expectations	Level 5: Exceeded Expectations <i>(Max. 850)</i>

ACADEMIC ACHIEVEMENT

MONMOUTH
OCEANPORT BORO

GRADE SPAN 05-08

MAPLE PLACE MIDDLE SCHOOL
MAPLE PLACE 2 MAPLE PLACE
OCEANPORT, NJ 07757-1600

PARCC ELA Performance Distribution - Grade - 05

This table presents the grade level outcomes, as measured by PARCC, in all five performance levels for all subgroups. PARCC consists of five performance levels: Level 1 - Did not yet meet grade-level expectations, Level 2 -Partially met expectations, Level 3 - Approached expectations, Level 4 - Met expectations, and Level 5 - Exceeded expectations.

Subgroup	Valid Scores	Mean Scale Score	State Mean Scale Score	% Level_1	% Level_2	% Level_3	% Level_4	% Level_5	% Met/ Exceeded Expectation	State % Met/Exceeded Expectation
Schoolwide	37	744	751	11%	22%	27%	32%	8%	41%	53%
White	34	744	757	12%	21%	26%	32%	9%	41%	62%
African American	-	-	734	-	-	-	-	-	-	31%
Hispanic	-	-	737	-	-	-	-	-	-	35%
American Indian	-	-	746	-	-	-	-	-	-	45%
Asian	-	-	771	-	-	-	-	-	-	77%
Two or More Races	-	-	758	-	-	-	-	-	-	61%
Students with Disability	-	-	723	-	-	-	-	-	-	21%
English Language Learners	-	-	717	-	-	-	-	-	-	15%
Economically Disadvantaged Students	-	-	734	-	-	-	-	-	-	31%

ACADEMIC ACHIEVEMENT

**MONMOUTH
OCEANPORT BORO**

GRADE SPAN 05-08

**MAPLE PLACE MIDDLE SCHOOL
MAPLE PLACE 2 MAPLE PLACE
OCEANPORT, NJ 07757-1600**

PARCC ELA Performance Distribution - Grade - 06

This table presents the grade level outcomes, as measured by PARCC, in all five performance levels for all subgroups. PARCC consists of five performance levels: Level 1 - Did not yet meet grade-level expectations, Level 2 -Partially met expectations, Level 3 - Approached expectations, Level 4 - Met expectations, and Level 5 - Exceeded expectations.

Subgroup	Valid Scores	Mean Scale Score	State Mean Scale Score	% Level_1	% Level_2	% Level_3	% Level_4	% Level_5	% Met/ Exceeded Expectation	State % Met/Exceeded Expectation
Schoolwide	65	755	749	2%	6%	34%	54%	5%	58%	50%
White	62	756	755	0%	6%	35%	53%	5%	58%	59%
African American	-	-	732	-	-	-	-	-	-	29%
Hispanic	-	-	736	-	-	-	-	-	-	34%
American Indian	-	-	743	-	-	-	-	-	-	39%
Asian	-	-	770	-	-	-	-	-	-	77%
Two or More Races	-	-	753	-	-	-	-	-	-	57%
Students with Disability	13	731	718	8%	23%	46%	15%	8%	23%	17%
English Language Learners	-	-	711	-	-	-	-	-	-	11%
Economically Disadvantaged Students	-	-	733	-	-	-	-	-	-	30%

ACADEMIC ACHIEVEMENT

MONMOUTH
OCEANPORT BORO

GRADE SPAN 05-08

MAPLE PLACE MIDDLE SCHOOL
MAPLE PLACE 2 MAPLE PLACE
OCEANPORT, NJ 07757-1600

PARCC ELA Performance Distribution - Grade - 07

This table presents the grade level outcomes, as measured by PARCC, in all five performance levels for all subgroups. PARCC consists of five performance levels: Level 1 - Did not yet meet grade-level expectations, Level 2 -Partially met expectations, Level 3 - Approached expectations, Level 4 - Met expectations, and Level 5 - Exceeded expectations.

Subgroup	Valid Scores	Mean Scale Score	State Mean Scale Score	% Level_1	% Level_2	% Level_3	% Level_4	% Level_5	% Met/ Exceeded Expectation	State % Met/Exceeded Expectation
Schoolwide	50	752	750	6%	14%	24%	40%	16%	56%	53%
White	42	753	757	5%	12%	26%	38%	19%	57%	61%
African American	-	-	730	-	-	-	-	-	-	31%
Hispanic	-	-	736	-	-	-	-	-	-	36%
American Indian	-	-	746	-	-	-	-	-	-	49%
Asian	-	-	777	-	-	-	-	-	-	80%
Two or More Races	-	-	756	-	-	-	-	-	-	58%
Students with Disability	-	-	713	-	-	-	-	-	-	18%
English Language Learners	-	-	703	-	-	-	-	-	-	11%
Economically Disadvantaged Students	-	-	733	-	-	-	-	-	-	33%

ACADEMIC ACHIEVEMENT

MONMOUTH
OCEANPORT BORO

GRADE SPAN 05-08

MAPLE PLACE MIDDLE SCHOOL
MAPLE PLACE 2 MAPLE PLACE
OCEANPORT, NJ 07757-1600

PARCC ELA Performance Distribution - Grade - 08

This table presents the grade level outcomes, as measured by PARCC, in all five performance levels for all subgroups. PARCC consists of five performance levels: Level 1 - Did not yet meet grade-level expectations, Level 2 -Partially met expectations, Level 3 - Approached expectations, Level 4 - Met expectations, and Level 5 - Exceeded expectations.

Subgroup	Valid Scores	Mean Scale Score	State Mean Scale Score	% Level_1	% Level_2	% Level_3	% Level_4	% Level_5	% Met/ Exceeded Expectation	State % Met/Exceeded Expectation
Schoolwide	48	756	750	8%	17%	23%	33%	19%	52%	53%
White	45	757	757	9%	13%	24%	33%	20%	53%	61%
African American	-	-	730	-	-	-	-	-	-	31%
Hispanic	-	-	735	-	-	-	-	-	-	37%
American Indian	-	-	741	-	-	-	-	-	-	49%
Asian	-	-	778	-	-	-	-	-	-	80%
Two or More Races	-	-	753	-	-	-	-	-	-	55%
Students with Disability	-	-	713	-	-	-	-	-	-	16%
English Language Learners	-	-	701	-	-	-	-	-	-	9%
Economically Disadvantaged Students	-	-	732	-	-	-	-	-	-	34%

ACADEMIC ACHIEVEMENT

MONMOUTH
OCEANPORT BORO

GRADE SPAN 05-08

MAPLE PLACE MIDDLE SCHOOL
MAPLE PLACE 2 MAPLE PLACE
OCEANPORT, NJ 07757-1600

PARCC MATH - Performance Distribution - Grade - 05

This table presents the grade level outcomes, as measured by PARCC, in all five performance levels for all subgroups. PARCC consists of five performance levels: Level 1 - Did not yet meet grade-level expectations, Level 2 -Partially met expectations, Level 3 - Approached expectations, Level 4 - Met expectations, and Level 5 - Exceeded expectations.

Subgroup	Valid Scores	Mean Scale Score	State Mean Scale Score	% Level_1	% Level_2	% Level_3	% Level_4	% Level_5	% Met/ Exceeded Expectation	State % Met/Exceeded Expectation
Schoolwide	37	742	744	3%	22%	32%	43%	0%	43%	42%
White	34	743	749	3%	24%	26%	47%	0%	47%	49%
African American	-	-	728	-	-	-	-	-	-	21%
Hispanic	-	-	733	-	-	-	-	-	-	26%
American Indian	-	-	745	-	-	-	-	-	-	46%
Asian	-	-	768	-	-	-	-	-	-	74%
Two or More Races	-	-	749	-	-	-	-	-	-	50%
Students with Disability	-	-	724	-	-	-	-	-	-	19%
English Language Learners	-	-	724	-	-	-	-	-	-	17%
Economically Disadvantaged Students	-	-	731	-	-	-	-	-	-	23%

ACADEMIC ACHIEVEMENT

MONMOUTH
OCEANPORT BORO

GRADE SPAN 05-08

MAPLE PLACE MIDDLE SCHOOL
MAPLE PLACE 2 MAPLE PLACE
OCEANPORT, NJ 07757-1600

PARCC MATH - Performance Distribution - Grade - 06

This table presents the grade level outcomes, as measured by PARCC, in all five performance levels for all subgroups. PARCC consists of five performance levels: Level 1 - Did not yet meet grade-level expectations, Level 2 -Partially met expectations, Level 3 - Approached expectations, Level 4 - Met expectations, and Level 5 - Exceeded expectations.

Subgroup	Valid Scores	Mean Scale Score	State Mean Scale Score	% Level_1	% Level_2	% Level_3	% Level_4	% Level_5	% Met/ Exceeded Expectation	State % Met/Exceeded Expectation
Schoolwide	65	743	743	3%	20%	34%	40%	3%	43%	42%
White	62	744	749	2%	21%	32%	42%	3%	45%	50%
African American	-	-	726	-	-	-	-	-	-	19%
Hispanic	-	-	731	-	-	-	-	-	-	25%
American Indian	-	-	740	-	-	-	-	-	-	35%
Asian	-	-	768	-	-	-	-	-	-	75%
Two or More Races	-	-	745	-	-	-	-	-	-	44%
Students with Disability	13	722	718	15%	31%	31%	23%	0%	23%	15%
English Language Learners	-	-	718	-	-	-	-	-	-	14%
Economically Disadvantaged Students	-	-	729	-	-	-	-	-	-	23%

ACADEMIC ACHIEVEMENT

MONMOUTH
OCEANPORT BORO

GRADE SPAN 05-08

MAPLE PLACE MIDDLE SCHOOL
MAPLE PLACE 2 MAPLE PLACE
OCEANPORT, NJ 07757-1600

PARCC MATH - Performance Distribution - Grade - 07

This table presents the grade level outcomes, as measured by PARCC, in all five performance levels for all subgroups. PARCC consists of five performance levels: Level 1 - Did not yet meet grade-level expectations, Level 2 -Partially met expectations, Level 3 - Approached expectations, Level 4 - Met expectations, and Level 5 - Exceeded expectations.

Subgroup	Valid Scores	Mean Scale Score	State Mean Scale Score	% Level_1	% Level_2	% Level_3	% Level_4	% Level_5	% Met/ Exceeded Expectation	State % Met/Exceeded Expectation
Schoolwide	50	743	740	2%	16%	44%	38%	0%	38%	38%
White	42	743	745	2%	14%	43%	40%	0%	40%	46%
African American	-	-	725	-	-	-	-	-	-	17%
Hispanic	-	-	730	-	-	-	-	-	-	23%
American Indian	-	-	734	-	-	-	-	-	-	32%
Asian	-	-	760	-	-	-	-	-	-	68%
Two or More Races	-	-	742	-	-	-	-	-	-	43%
Students with Disability	-	-	715	-	-	-	-	-	-	11%
English Language Learners	-	-	717	-	-	-	-	-	-	11%
Economically Disadvantaged Students	-	-	728	-	-	-	-	-	-	21%

ACADEMIC ACHIEVEMENT

MONMOUTH
OCEANPORT BORO

GRADE SPAN 05-08

MAPLE PLACE MIDDLE SCHOOL
MAPLE PLACE 2 MAPLE PLACE
OCEANPORT, NJ 07757-1600

PARCC MATH - Performance Distribution - Grade - 08

This table presents the grade level outcomes, as measured by PARCC, in all five performance levels for all subgroups. PARCC consists of five performance levels: Level 1 - Did not yet meet grade-level expectations, Level 2 -Partially met expectations, Level 3 - Approached expectations, Level 4 - Met expectations, and Level 5 - Exceeded expectations.

Subgroup	Valid Scores	Mean Scale Score	State Mean Scale Score	% Level_1	% Level_2	% Level_3	% Level_4	% Level_5	% Met/ Exceeded Expectation	State % Met/Exceeded Expectation
Schoolwide	-	-	726	-	-	-	-	-	-	24%
White	-	-	732	-	-	-	-	-	-	29%
African American	-	-	715	-	-	-	-	-	-	14%
Hispanic	-	-	721	-	-	-	-	-	-	19%
American Indian	-	-	722	-	-	-	-	-	-	15%
Asian	-	-	744	-	-	-	-	-	-	46%
Two or More Races	-	-	724	-	-	-	-	-	-	24%
Students with Disability	-	-	705	-	-	-	-	-	-	9%
English Language Learners	-	-	706	-	-	-	-	-	-	10%
Economically Disadvantaged Students	-	-	719	-	-	-	-	-	-	17%

ACADEMIC ACHIEVEMENT

MONMOUTH
OCEANPORT BORO

GRADE SPAN 05-08

MAPLE PLACE MIDDLE SCHOOL
MAPLE PLACE 2 MAPLE PLACE
OCEANPORT, NJ 07757-1600

PARCC ALGEBRA I - Performance Distribution

This table presents the grade level outcomes, as measured by PARCC, in all five performance levels for all subgroups. PARCC consists of five performance levels: Level 1 - Did not yet meet grade-level expectations, Level 2 -Partially met expectations, Level 3 - Approached expectations, Level 4 - Met expectations, and Level 5 - Exceeded expectations.

Subgroup	Valid Scores	Mean Scale Score	State Mean Scale Score	% Level_1	% Level_2	% Level_3	% Level_4	% Level_5	% Met/ Exceeded Expectation	State % Met/Exceeded Expectation
Schoolwide	39	741	740	3%	5%	67%	26%	0%	26%	40%
White	38	741	746	3%	5%	66%	26%	0%	26%	47%
African American	-	-	722	-	-	-	-	-	-	20%
Hispanic	-	-	725	-	-	-	-	-	-	21%
American Indian	-	-	733	-	-	-	-	-	-	35%
Asian	-	-	769	-	-	-	-	-	-	73%
Two or More Races	-	-	734	-	-	-	-	-	-	35%
Students with Disability	-	-	710	-	-	-	-	-	-	8%
English Language Learners	-	-	710	-	-	-	-	-	-	7%
Economically Disadvantaged Students	-	-	725	-	-	-	-	-	-	21%

ACADEMIC ACHIEVEMENT

MONMOUTH
OCEANPORT BORO

GRADE SPAN 05-08

MAPLE PLACE MIDDLE SCHOOL
MAPLE PLACE 2 MAPLE PLACE
OCEANPORT, NJ 07757-1600

2015 National Assessment Educational Progress (NAEP)

The National Assessment of Educational Progress (NAEP) is the largest national assessment of what our nation’s students know and can do. NAEP assesses fourth-, eighth-, and twelfth-grade students in subjects such as reading, mathematics, science, and writing. The reporting of NAEP scores on state report cards is a federal mandate. The results of NAEP are also published as the Nation’s Report Card, and are available for the nation, states, and, in some cases, urban districts. The NAEP scores on the report card include grades four and eight 2015 reading and math scores for New Jersey which are the last scores published.

For subgroup outcomes, visit:

- Reading Grade 4 <http://www.nj.gov/education/pr/1415/naep/naep4read.html>
- Reading Grade 8 <http://www.nj.gov/education/pr/1415/naep/naep8read.html>
- Math Grade 4 <http://www.nj.gov/education/pr/1415/naep/naep4math.html>
- Math Grade 8 <http://www.nj.gov/education/pr/1415/naep/naep8math.html>

For more information, visit <http://nces.ed.gov/nationsreportcard/>

Proficiency Percentages

Subject	Grade	State/Nation	Below Basic	Basic	Proficient	Advanced
Reading	Grade 4	State (NJ)	25	33	31	12
	Grade 4	Nation	31	33	27	9
	Grade 8	State (NJ)	20	39	35	6
	Grade 8	Nation	24	42	31	4
Math	Grade 4	State (NJ)	14	39	38	9
	Grade 4	Nation	18	42	33	7
	Grade 8	State (NJ)	21	32	30	16
	Grade 8	Nation	29	38	25	8

ACADEMIC ACHIEVEMENT

MONMOUTH
OCEANPORT BORO

GRADE SPAN 05-08

MAPLE PLACE MIDDLE SCHOOL
MAPLE PLACE 2 MAPLE PLACE
OCEANPORT, NJ 07757-1600

NJASK Results - Science Grade Level - 08

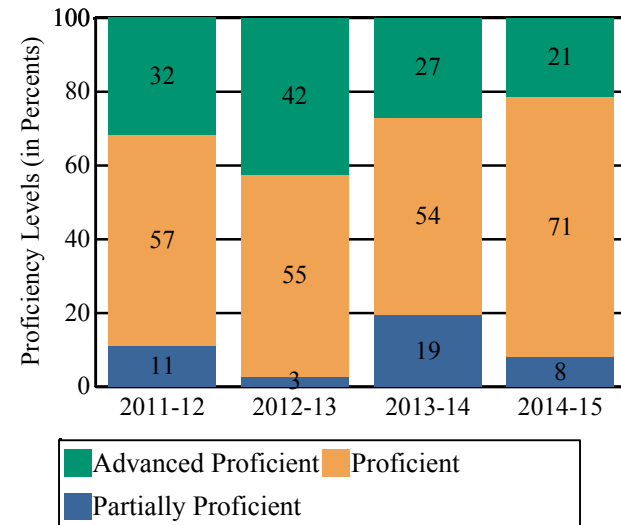
This table presents the grade level proficiency results, as measured by NJASK, in Advanced Proficient, Proficient, and Partially Proficient categories for all appropriate subgroups.

Subgroups	Advanced Proficient	Proficient	Partially Proficient
Schoolwide	21%	71%	8%
White	20%	72%	7%
African American	-	-	-
Hispanic	-	-	-
American Indian	-	-	-
Asian	-	-	-
Two or More Races	-	-	-
Students with Disability	-	-	-
English Language Learners	-	-	-
Economically Disadvantaged Students	-	-	-

Data is presented for subgroups when the count is high enough under ESEA Waiver suppression rules.

NJASK Proficiency Trends - Science - Grade Level - 08

This graph presents the grade level outcomes in the categories of Advanced Proficient, Proficient, and Partially Proficient over the last four years.



COLLEGE AND CAREER READINESS

MONMOUTH
OCEANPORT BORO

GRADE SPAN 05-08

MAPLE PLACE MIDDLE SCHOOL
MAPLE PLACE 2 MAPLE PLACE
OCEANPORT, NJ 07757-1600

Students in both elementary and middle schools begin to demonstrate college readiness behaviors long before they even enter high school. Among the behaviors that research has shown to be indicative of successfully graduating high school is regularly attending school. For all elementary and middle schools, this includes the percentage of students that are chronically absent each year, defined as missing more than 10% of possible school days. Also presented is the percentage of students participating in Visual and Performing Arts coursework and Algebra I course outcomes.

Algebra I Course Enrollment

This table presents the count of students in this school who were reported in the Algebra I course code in NJSMART and the count of students who took the Algebra I test of PARCC.

Algebra I Enrollment Count	Algebra I PARCC Test Count
75	40

Algebra I Test Taking

This table presents the percentage of students, as reported in NJSMART, who earned a C or higher in their Algebra I course and the percentage of students who met or exceeded expectation on the Algebra I test of PARCC.

Algebra I Percent C or Better	Algebra I PARCC Percent Met or Exceeded Expectation
-	27.5%

- Data Suppressed to protect the confidentiality of students

COLLEGE AND CAREER READINESS

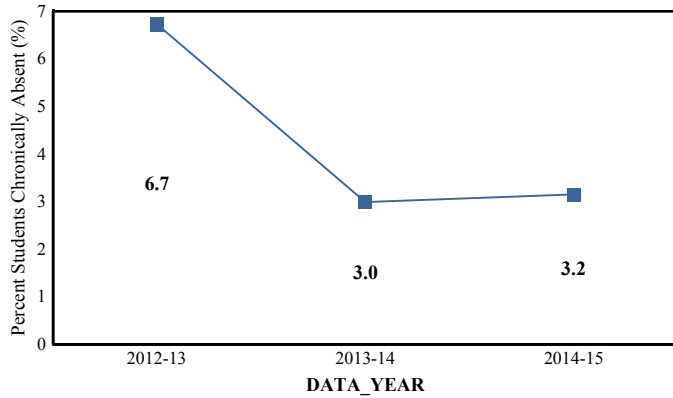
MONMOUTH
OCEANPORT BORO

MAPLE PLACE MIDDLE SCHOOL
MAPLE PLACE 2 MAPLE PLACE
OCEANPORT, NJ 07757-1600

GRADE SPAN 05-08

Chronic Absenteeism Trend

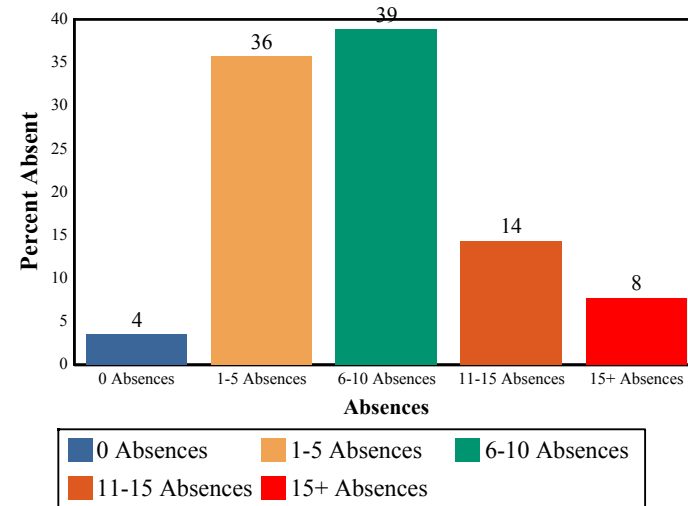
This graph presents the percentage of the enrolled students who were chronically absent for the past three years.



Chronic Absenteeism for 2014-15	3.15%
--	--------------

Absenteeism

The chart below presents the percentage of students who were absent in each category of absence: 0 absences, 1- 5 absences, 6 - 10 absences, 11 - 15 absences, and more than 15 absences. An absence is defined as being 'not present' and includes the days missed regardless of whether they were determined to be excused or unexcused by the school.



Visual and Performing Arts

The chart below contains the percentage of students who were enrolled in at least one Dance, Drama/Theater, Music or Visual Arts class in this school. The last row shows the percentage of students who were enrolled in any Visual and Performing Arts classes in the school.

Percent of Students Enrolled	School	State
Dance	N/R	1.6%
Drama/Theater	N/R	3.9%
Music	N/R	66.0%
Visual Arts	92.9%	71.1%
Total: All Visual and Performing Arts	92.9%	89.8%

N/R - Data Not Reported

STUDENT GROWTH

MONMOUTH

OCEANPORT BORO

GRADE SPAN 05-08

MAPLE PLACE MIDDLE SCHOOL

MAPLE PLACE 2 MAPLE PLACE

OCEANPORT, NJ 07757-1600

This section of the performance report presents data about student growth, utilizing the Student Growth Percentile Methodology (SGP). SGP creates a measure of how students progressed in grades 4 through 8 in Language Arts Literacy and in grades 4 through 7 in Math when compared to other students with a similar test score history. A short video explaining the methodology can be found here: <http://www.state.nj.us/education/njsmart/performance/>

The below chart consist of five columns with measures. The first column - Schoolwide Performance - presents the schoolwide median growth score in either English Language Arts/Literacy or Mathematics for all students in the school. The second column - Peer Percentile - indicates how the school's growth performance compares to its group of peer schools. The third column - Statewide Percentile - indicates how a school compares to schools across the state. The last column - Met Target? - indicates whether the school's performance met or exceeded the statewide target, which was set to 35.

The fourth row presents the averages of the peer school percentiles, the averages of statewide percentiles, the percentage of statewide targets met.

Student Growth Indicators	Schoolwide Performance	Peer Percentile	Statewide Percentile	Statewide Target	Met Target?
Student Growth on Language Arts	35	13	13	35	YES
Student Growth on Math	33	7	9	35	NO
		10	11		50%

Student Growth

This table presents for all students with growth scores the interaction between their performance on PARCC and their growth scores. For example, in the top left cell the percentage of students who are both in Level 1 - Did not yet meet expectations AND also demonstrating low growth is displayed.

Language Arts

(Expectations)	GROWTH		
	Low	Typical	High
Did Not Yet Meet	5%	0%	0%
Partially Met	12%	0%	1%
Approached	19%	6%	2%
Met	12%	14%	17%
Exceeded	1%	1%	8%

Math

(Expectations)	GROWTH		
	Low	Typical	High
Did Not Yet Meet	5%	0%	0%
Partially Met	14%	6%	1%
Approached	19%	13%	5%
Met	15%	13%	8%
Exceeded	0%	1%	0%

Low Growth is defined as an Student Growth Percentile score less than 35.
Typical Growth is defined as an Student Growth Percentile score between 35 and 65.
High Growth is defined as a Student Growth Percentile score higher than 65.

WITHIN SCHOOL ACHIEVEMENT GAP

**MONMOUTH
OCEANPORT BORO**

GRADE SPAN 05-08

**MAPLE PLACE MIDDLE SCHOOL
MAPLE PLACE 2 MAPLE PLACE
OCEANPORT, NJ 07757-1600**

This section of the performance report presents data about the achievement gap that exists within a school - as measured by the difference between the students' scale scores at the 25th and 75th percentile in the school, the Interquartile Range (IQR). Taken together with an understanding of the overall and average achievement levels in the school, the IQR furthers an understanding of the range of student outcomes that exist in a school. A school gap smaller than the state gap indicates that the school's range of student outcomes is narrower than the state's while a school gap larger than the state gap indicates that the school's range of student outcomes is broader than the state's.

Grade Level - 05

PARCC Language Arts 25th %ile vs 75th%ile

This table presents the scale scores associated with students at the bottom (0th percentile), the 25th percentile, the 50th percentile, the 75th percentile and the top (99th percentile) of school's distribution.

Percentile	School Scale Score	State Scale Score
99th	825	850
75th	767	773
50th	736	751
25th	721	728
0th	684	650

	Scale Score Gap - School	Scale Score Gap - State
25th vs 75th Gap	46	45

Grade Level - 05

PARCC MATH 25th %ile vs 75th%ile

This table presents the scale scores associated with students at the bottom (0th percentile), the 25th percentile, the 50th percentile, the 75th percentile and the top (99th percentile) of school's distribution.

Percentile	School Scale Score	State Scale Score
99th	785	850
75th	754	763
50th	745	743
25th	727	723
0th	697	650

	Scale Score Gap - School	Scale Score Gap - State
25th vs 75th Gap	27	40

WITHIN SCHOOL ACHIEVEMENT GAP

MONMOUTH
OCEANPORT BORO

GRADE SPAN 05-08

MAPLE PLACE MIDDLE SCHOOL
MAPLE PLACE 2 MAPLE PLACE
OCEANPORT, NJ 07757-1600

Grade Level - 06

PARCC Language Arts 25th %ile vs 75th%ile

This table presents the scale scores associated with students at the bottom (0th percentile), the 25th percentile, the 50th percentile, the 75th percentile and the top (99th percentile) of school's distribution.

Percentile	School Scale Score	State Scale Score
99th	800	850
75th	771	770
50th	759	749
25th	737	726
0th	698	650

	Scale Score Gap - School	Scale Score Gap - State
25th vs 75th Gap	34	44

Grade Level - 07

PARCC Language Arts 25th %ile vs 75th%ile

This table presents the scale scores associated with students at the bottom (0th percentile), the 25th percentile, the 50th percentile, the 75th percentile and the top (99th percentile) of school's distribution.

Percentile	School Scale Score	State Scale Score
99th	810	850
75th	767	776
50th	756	751
25th	730	724
0th	682	650

	Scale Score Gap - School	Scale Score Gap - State
25th vs 75th Gap	37	52

Grade Level - 06

PARCC MATH 25th %ile vs 75th%ile

This table presents the scale scores associated with students at the bottom (0th percentile), the 25th percentile, the 50th percentile, the 75th percentile and the top (99th percentile) of school's distribution.

Percentile	School Scale Score	State Scale Score
99th	790	850
75th	758	763
50th	741	742
25th	724	721
0th	693	650

	Scale Score Gap - School	Scale Score Gap - State
25th vs 75th Gap	34	42

Grade Level - 07

PARCC MATH 25th %ile vs 75th%ile

This table presents the scale scores associated with students at the bottom (0th percentile), the 25th percentile, the 50th percentile, the 75th percentile and the top (99th percentile) of school's distribution.

Percentile	School Scale Score	State Scale Score
99th	778	850
75th	761	759
50th	740	740
25th	729	720
0th	698	650

	Scale Score Gap - School	Scale Score Gap - State
25th vs 75th Gap	32	39

WITHIN SCHOOL ACHIEVEMENT GAP

MONMOUTH
OCEANPORT BORO

MAPLE PLACE MIDDLE SCHOOL
MAPLE PLACE 2 MAPLE PLACE
OCEANPORT, NJ 07757-1600

GRADE SPAN 05-08

Grade Level - 08

PARCC Language Arts 25th %ile vs 75th%ile

This table presents the scale scores associated with students at the bottom (0th percentile), the 25th percentile, the 50th percentile, the 75th percentile and the top (99th percentile) of school's distribution.

Percentile	School Scale Score	State Scale Score
99th	828	850
75th	788	777
50th	754	751
25th	726	723
0th	663	650

	Scale Score Gap - School	Scale Score Gap - State
25th vs 75th Gap	62	54

Grade Level - 08

PARCC MATH 25th %ile vs 75th%ile

This table presents the scale scores associated with students at the bottom (0th percentile), the 25th percentile, the 50th percentile, the 75th percentile and the top (99th percentile) of school's distribution.

Percentile	School Scale Score	State Scale Score
99th	N/A	850
75th	N/A	748
50th	N/A	726
25th	N/A	704
0th	N/A	650

	Scale Score Gap - School	Scale Score Gap - State
25th vs 75th Gap	N/A	44

Length of School Day

This table presents the amount of time a school is in session for a typical student on a normal school day.

	School
2014-15	7 Hrs. 40 Mins.

Student Suspension Rate

This table presents the percentage of students who were suspended one or more times during the school year.

	School
2014-15	0.0%

Instructional Time

This table presents the amount of time that a typical student is engaged in instructional activities under the supervision of a certified teacher.

2014-15	School
Full Time	6 Hrs. 46 Mins.
Shared Time	0 Hrs. 0 Mins.

Student Expulsions

This table presents the number of students who were expelled from the school and district during the school year.

	School
2014-15	0

Student to Staff Ratio

This table presents the count of students per faculty member or administrator in the school. All staff are counted in full-time equivalents.

2014-15	School
Faculty	10
Administrators	288

This table presents the list of peer schools in alphabetical order by county name that was created specifically for this school (highlighted in yellow). Peer schools are drawn from across the state and represent schools that have similar grade configurations and that are educating students of similar demographic characteristics, as measured by enrollment in Free/Reduced Lunch Programs, Limited English Proficiency or Special Education Programs.

<u>COUNTY NAME</u>	<u>DISTRICT NAME</u>	<u>SCHOOL NAME</u>	<u>CDS CODE</u>	<u>GRADES PAN</u>	<u>ECONOMICALLY DISADVANTAGED</u>	<u>ENGLISH LANGUAGE LEARNERS</u>	<u>SPECIAL EDUCATION</u>
BERGEN	CLOSTER BORO	TENAKILL MIDDLE SCHOOL	03-0930-060	05-08	0%	4.6%	12%
BERGEN	OAKLAND BORO	VALLEY MIDDLE SCHOOL	03-3760-080	06-08	6.5%	0.5%	13.4%
BERGEN	OLD TAPPAN BORO	CHARLES DEWOLF MIDDLE SCHOOL	03-3850-030	05-08	0.5%	2.1%	7.8%
BERGEN	RUTHERFORD BORO	UNION SCHOOL	03-4600-100	04-08	4.6%	0.6%	9.1%
BURLINGTON	MEDFORD TWP	MEDFORD MEMORIAL MIDDLE SCHOOL	05-3080-055	07-08	6.9%	0.6%	13.4%
BURLINGTON	RIVERTON	RIVERTON SCHOOL	05-4460-050	KG-08	9%	0%	16.2%
CHARTERS	UNITY CS	UNITY CHARTER SCHOOL	80-8050-990	KG-08	8.4%	0%	18.8%
ESSEX	CALDWELL-WEST CALDWELL	GROVER CLEVELAND MIDDLE SCHOOL	13-0660-060	06-08	7.4%	0.2%	17.7%
HUNTERDON	DELAWARE TWP	DELAWARE TOWNSHIP SCHOOL	19-1040-040	PK-08	9%	1.1%	19.3%
HUNTERDON	FRANKLIN TWP	FRANKLIN TOWNSHIP SCHOOL	19-1600-050	PK-08	4.3%	0.7%	11.3%
HUNTERDON	KINGWOOD TWP	KINGWOOD TOWNSHIP SCHOOL	19-2450-050	PK-08	8.9%	0%	16.3%
HUNTERDON	READINGTON TWP	READINGTON MIDDLE SCHOOL	19-4350-050	06-08	6.7%	1%	17.2%
MERCER	W WINDSOR-PLAINS BORO REG	COMMUNITY MIDDLE SCHOOL	21-5715-140	06-08	5.9%	0.2%	9.7%
MONMOUTH	BRIELLE BORO	BRIELLE ELEMENTARY SCHOOL	25-0560-020	PK-08	4.3%	0.5%	11.9%
MONMOUTH	COLTS NECK TWP	CEDAR DRIVE MIDDLE SCHOOL	25-0945-030	06-08	5.7%	3%	16.8%
MONMOUTH	MARLBORO TWP	MARLBORO MIDDLE SCHOOL	25-3030-050	06-08	4.3%	1.5%	14.2%
MONMOUTH	MILLSTONE TWP	MILLSTONE TOWNSHIP MIDDLE SCHOOL	25-3200-040	06-08	8%	0%	17.4%
MONMOUTH	OCEANPORT BORO	MAPLE PLACE MIDDLE SCHOOL	25-3830-030	05-08	8.3%	0.7%	18.8%
MORRIS	MADISON BORO	MADISON JUNIOR SCHOOL	27-2870-100	06-08	7.3%	0.5%	16.2%
MORRIS	PEQUANNOCK TWP	PEQUANNOCK VALLEY SCHOOL	27-4080-080	06-08	6.8%	0.4%	15.7%
MORRIS	RANDOLPH TWP	RANDOLPH MIDDLE SCHOOL	27-4330-075	06-08	8%	1.4%	18.5%
PASSAIC	WAYNE TWP	SCHUYLER-COLFAX MIDDLE SCHOOL	31-5570-145	06-08	7%	0.2%	17.1%
SOMERSET	MONTGOMERY TWP	MONTGOMERY UPPER MIDDLE SCHOOL	35-3320-070	07-08	4.3%	0.7%	12%

SCHOOL PEER GROUP

MONMOUTH

OCEANPORT BORO

GRADE SPAN 05-08

MAPLE PLACE MIDDLE SCHOOL

MAPLE PLACE 2 MAPLE PLACE

OCEANPORT, NJ 07757-1600

SUSSEX	ANDOVER REG	LONG POND SCHOOL	37-0090-040	05-08	8.9%	0.4%	20.4%
SUSSEX	BYRAM TWP	BYRAM INTERMEDIATE SCHOOL	37-0640-030	05-08	8.8%	0.2%	18.6%
SUSSEX	GREEN TWP	GREEN HILLS SCHOOL	37-1800-060	KG-08	5.7%	0%	10.2%
UNION	CLARK TWP	CARL H. KUMPF SCHOOL	39-0850-035	06-08	6.3%	1%	13.8%
UNION	NEW PROVIDENCE BORO	NEW PROVIDENCE MIDDLE SCHOOL	39-3560-080	07-08	5.3%	0.3%	10%
UNION	SCOTCH PLAINS-FANWOOD REG	PARK MIDDLE SCHOOL	39-4670-060	05-08	8.2%	0.8%	16.6%
WARREN	ALLAMUCHY TWP	ALLAMUCHY TOWNSHIP SCHOOL	41-0030-010	02-08	9.4%	0.6%	19.9%
WARREN	GREENWICH TWP	STEWARTSVILLE MIDDLE SCHOOL	41-1840-070	06-08	6.4%	0%	14.8%



State of New Jersey

2014-15

25-3830-050

OVERVIEW

MONMOUTH
OCEANPORT BORO

GRADE SPAN PK-04

WOLF HILL ELEMENTARY SCHOOL
29 WOLF HILL AVENUE
OCEANPORT, NJ 07757-1000

The New Jersey Department of Education (NJDOE) is pleased to present these annual reports of School Performance. These reports are designed to inform parents, educators and communities about how well a school is performing and preparing its students for college and careers.

In particular, the School Performance Reports seek to:

- **Focus** attention on metrics that are indicative of college and career readiness.
- **Benchmark** a school's performance against other peer schools that are educating similar students, against statewide outcomes, and against state targets to illuminate and build upon a school's strengths and identify areas for improvement.
- **Improve** educational outcomes for students by providing both longitudinal and growth data so that progress can be measured as part of an individual school's efforts to engage in continuous improvement.

While the New Jersey School Performance Reports seek to bring more information to educators and stakeholders about the performance of schools, they do not seek to distill the performance of schools into a single metric, a single score, or a simplified conclusion. Instead, the intention is that educators and stakeholders will engage in deep, lengthy conversations about the full range of the data presented. As educators know well, measuring school performance is both an art and a science. While the School Performance Report brings attention to important student outcomes, NJDOE does not collect data about other essential elements of a school, such as the provision of opportunities to participate and excel in extracurricular activities; the development of non-cognitive skills like time management and perseverance; the pervasiveness of a positive school culture or climate; or the attainment of other employability and technical skills, as many of these data are beyond both the capacity and resources of schools to measure and collect well.

To learn more about New Jersey's school accountability system, please visit: <http://www.nj.gov/education/educators/>.

DEMOGRAPHIC INFORMATION

MONMOUTH
OCEANPORT BORO

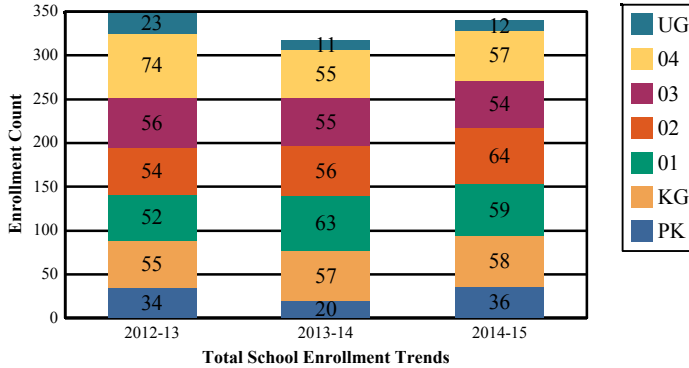
GRADE SPAN PK-04

25-3830-050

WOLF HILL ELEMENTARY SCHOOL
29 WOLF HILL AVENUE
OCEANPORT, NJ 07757-1000

Enrollment by Grade

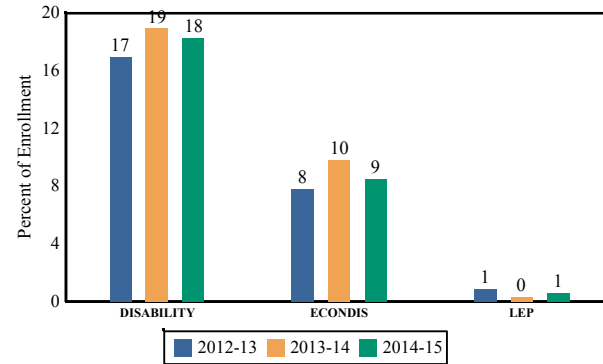
This graph presents the count of students who were 'on roll' by grade in October of each school year.



Note: "UG" represents the count of students who are 'on roll' in this school but who are educated in ungraded classrooms, meaning that the classrooms may contain students from multiple grade levels.

Enrollment Trends by Program Participation

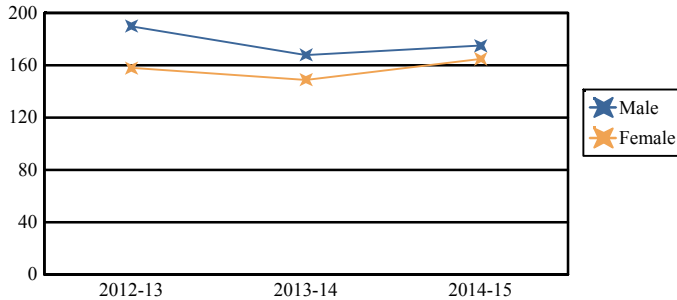
This graph presents the percentages of students by program participation who were 'on roll' in October of each school year.



Total School Enrollment	
2012-13	348
2013-14	317
2014-15	340

Enrollment by Gender

This graph presents the count of students by gender who were 'on roll' in October of each school year.



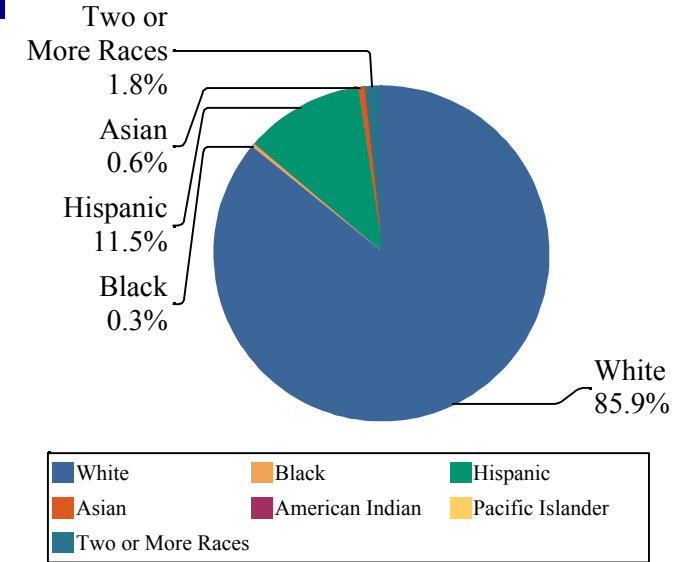
	Male	Female
2012-13	190	158
2013-14	168	149
2014-15	175	165

Current Year Enrollment by Program Participation

2014-15	Count of Students	% of Enrollment
Students with Disability	62	18%
Economically Disadvantaged Students	29	8.5%
English Language Learners	2	0.6%

Enrollment by Ethnic/Racial Subgroup

This graph presents the percentages of enrollment for each subgroup defined by the No Child Left Behind Act of 2001.



Language Diversity

This table presents the percentage of students who primarily speak each language in their home.

2014-15	Percent
English	95.5%
Spanish	3.3%
Chinese	0.9%
Hindi	0.3%

ACADEMIC ACHIEVEMENT

**MONMOUTH
OCEANPORT BORO**

GRADE SPAN PK-04

**WOLF HILL ELEMENTARY SCHOOL
29 WOLF HILL AVENUE
OCEANPORT, NJ 07757-1000**

The Academic Achievement section measures the content knowledge that students have in English Language Arts/Literacy (ELA/L) and Math as demonstrated in the 2014-2015 *Partnership for Assessment of Readiness for College and Careers (PARCC)* assessments. The below chart consist of three columns. The first column - Schoolwide Performance - includes the percentage of students in ELA/L and Math who met or exceeded grade level expectations. The middle column - Peer School Percentile - indicates how the school's outcomes compared to its peers. The last column - Statewide Percentile - indicates how the school's outcomes compared to schools across the state.

Academic Achievement Indicators	Schoolwide Performance	Peer Percentile	State Percentile
English Language Arts/Literacy Met or Exceeded Expectation	57%	17	57
Math Met or Exceeded Expectation	43%		

ESEA Waiver - English Language Arts/Literacy

This table presents, for each subgroup in the school, the total number of valid test scores, the percentage of students who met or exceeded expectations, the assessment participation goal, and the participation rate. The participation goal is established as 95% by the United States Department of Education.

Subgroups	Valid Scores	% Meeting Standards	Participation Goal	Participation Rate	Met Participation?
Schoolwide	100	57%	95%	92%	YES*
White	90	57.8%	95%	92%	YES*
African American	-	-	--	--	--
Hispanic	-	-	--	--	--
American Indian	-	-	--	--	--
Asian	-	-	--	--	--
Two or More Races	-	-	--	--	--
Students with Disability	-	-	--	--	--
English Language Learners	-	-	--	--	--
Economically Disadvantaged Students	-	-	--	--	--

YES* = Met Participation Rate (Participation Averaging applied)

Data is presented for subgroups when the count is high enough under ESEA Waiver suppression rules.

ACADEMIC ACHIEVEMENT

MONMOUTH
OCEANPORT BORO

GRADE SPAN PK-04

WOLF HILL ELEMENTARY SCHOOL
29 WOLF HILL AVENUE
OCEANPORT, NJ 07757-1000

ESEA Waiver - Math

This table presents, for each subgroup in the school, the total number of valid test scores, the percentage of students who met or exceeded expectations, the assessment participation goal, and the participation rate. The participation goal is established as 95% by the United States Department of Education.

Subgroups	Valid Scores	% Meeting Standards	Participation Goal	Participation Rate	Met Participation?
Schoolwide	101	42.6%	95%	92.9%	YES*
White	91	46.2%	95%	93%	YES*
African American	-	-	--	--	--
Hispanic	-	-	--	--	--
American Indian	-	-	--	--	--
Asian	-	-	--	--	--
Two or More Races	-	-	--	--	--
Students with Disability	-	-	--	--	--
English Learner Students	-	-	--	--	--
Economically Disadvantaged Students	-	-	--	--	--

YES* = Met Participation Rate (Participation Averaging applied)

Data is presented for subgroups when the count is high enough under ESEA Waiver suppression rules.

PARCC Performance Level

The PARCC assesses how well students have learned grade-level material in English Language Arts/Literacy (ELA/L) and Math. The tests include questions that measure students' fundamental skills and knowledge, and require them to think critically, solve problems and support or explain their answers.

The PARCC reports students' overall scale scores that range from 650 to 850. To determine whether students have met academic expectations for their grade level/course in ELA/L and Math, students' overall scale scores are categorized into five Performance Levels. Students performing at levels 4 and 5 (met or exceeded expectations) have demonstrated readiness for the next grade level/course, and are on track for college and careers.

Five Performance Levels				
Level 1: Did Not Yet Meet Expectations <i>(Min. 650)</i>	Level 2: Partially Met Expectations	Level 3: Approached Expectations	Level 4: Met Expectations	Level 5: Exceeded Expectations <i>(Max. 850)</i>

PARCC ELA Performance Distribution - Grade - 03

This table presents the grade level outcomes, as measured by PARCC, in all five performance levels for all subgroups. PARCC consists of five performance levels: Level 1 - Did not yet meet grade-level expectations, Level 2 -Partially met expectations, Level 3 - Approached expectations, Level 4 - Met expectations, and Level 5 - Exceeded expectations.

Subgroup	Valid Scores	Mean Scale Score	State Mean Scale Score	% Level_1	% Level_2	% Level_3	% Level_4	% Level_5	% Met/ Exceeded Expectation	State % Met/Exceeded Expectation
Schoolwide	50	754	744	4%	18%	28%	44%	6%	50%	44%
White	47	755	753	4%	15%	30%	45%	6%	51%	55%
African American	-	-	725	-	-	-	-	-	-	26%
Hispanic	-	-	727	-	-	-	-	-	-	26%
American Indian	-	-	738	-	-	-	-	-	-	40%
Asian	-	-	769	-	-	-	-	-	-	70%
Two or More Races	-	-	751	-	-	-	-	-	-	53%
Students with Disability	13	730	718	15%	31%	38%	15%	0%	15%	24%
English Language Learners	-	-	709	-	-	-	-	-	-	11%
Economically Disadvantaged Students	-	-	724	-	-	-	-	-	-	24%

ACADEMIC ACHIEVEMENT

**MONMOUTH
OCEANPORT BORO**

**WOLF HILL ELEMENTARY SCHOOL
29 WOLF HILL AVENUE
OCEANPORT, NJ 07757-1000**

GRADE SPAN PK-04

PARCC ELA Performance Distribution - Grade - 04

This table presents the grade level outcomes, as measured by PARCC, in all five performance levels for all subgroups. PARCC consists of five performance levels: Level 1 - Did not yet meet grade-level expectations, Level 2 -Partially met expectations, Level 3 - Approached expectations, Level 4 - Met expectations, and Level 5 - Exceeded expectations.

Subgroup	Valid Scores	Mean Scale Score	State Mean Scale Score	% Level_1	% Level_2	% Level_3	% Level_4	% Level_5	% Met/Exceeded Expectation	State % Met/Exceeded Expectation
Schoolwide	50	759	751	4%	6%	26%	50%	14%	64%	52%
White	43	761	758	2%	7%	26%	49%	16%	65%	63%
African American	-	-	733	-	-	-	-	-	-	30%
Hispanic	-	-	737	-	-	-	-	-	-	35%
American Indian	-	-	746	-	-	-	-	-	-	52%
Asian	-	-	773	-	-	-	-	-	-	78%
Two or More Races	-	-	760	-	-	-	-	-	-	62%
Students with Disability	-	-	725	-	-	-	-	-	-	25%
English Language Learners	-	-	717	-	-	-	-	-	-	15%
Economically Disadvantaged Students	-	-	734	-	-	-	-	-	-	31%

ACADEMIC ACHIEVEMENT

MONMOUTH
OCEANPORT BORO

GRADE SPAN PK-04

WOLF HILL ELEMENTARY SCHOOL
29 WOLF HILL AVENUE
OCEANPORT, NJ 07757-1000

PARCC MATH - Performance Distribution - Grade - 03

This table presents the grade level outcomes, as measured by PARCC, in all five performance levels for all subgroups. PARCC consists of five performance levels: Level 1 - Did not yet meet grade-level expectations, Level 2 - Partially met expectations, Level 3 - Approached expectations, Level 4 - Met expectations, and Level 5 - Exceeded expectations.

Subgroup	Valid Scores	Mean Scale Score	State Mean Scale Score	% Level_1	% Level_2	% Level_3	% Level_4	% Level_5	% Met/Exceeded Expectation	State % Met/Exceeded Expectation
Schoolwide	51	746	746	2%	18%	37%	39%	4%	43%	46%
White	48	748	752	0%	17%	38%	42%	4%	46%	56%
African American	-	-	728	-	-	-	-	-	-	25%
Hispanic	-	-	733	-	-	-	-	-	-	28%
American Indian	-	-	742	-	-	-	-	-	-	41%
Asian	-	-	772	-	-	-	-	-	-	77%
Two or More Races	-	-	751	-	-	-	-	-	-	54%
Students with Disability	-	-	727	-	-	-	-	-	-	27%
English Language Learners	-	-	724	-	-	-	-	-	-	17%
Economically Disadvantaged Students	-	-	730	-	-	-	-	-	-	26%

ACADEMIC ACHIEVEMENT

**MONMOUTH
OCEANPORT BORO**

GRADE SPAN PK-04

**WOLF HILL ELEMENTARY SCHOOL
29 WOLF HILL AVENUE
OCEANPORT, NJ 07757-1000**

PARCC MATH - Performance Distribution - Grade - 04

This table presents the grade level outcomes, as measured by PARCC, in all five performance levels for all subgroups. PARCC consists of five performance levels: Level 1 - Did not yet meet grade-level expectations, Level 2 -Partially met expectations, Level 3 - Approached expectations, Level 4 - Met expectations, and Level 5 - Exceeded expectations.

Subgroup	Valid Scores	Mean Scale Score	State Mean Scale Score	% Level_1	% Level_2	% Level_3	% Level_4	% Level_5	% Met/ Exceeded Expectation	State % Met/Exceeded Expectation
Schoolwide	50	751	744	0%	14%	44%	36%	6%	42%	42%
White	43	752	749	0%	16%	37%	40%	7%	47%	50%
African American	-	-	727	-	-	-	-	-	-	20%
Hispanic	-	-	732	-	-	-	-	-	-	26%
American Indian	-	-	740	-	-	-	-	-	-	40%
Asian	-	-	769	-	-	-	-	-	-	75%
Two or More Races	-	-	750	-	-	-	-	-	-	52%
Students with Disability	-	-	724	-	-	-	-	-	-	21%
English Language Learners	-	-	722	-	-	-	-	-	-	15%
Economically Disadvantaged Students	-	-	730	-	-	-	-	-	-	23%

2015 National Assessment Educational Progress (NAEP)

The National Assessment of Educational Progress (NAEP) is the largest national assessment of what our nation's students know and can do. NAEP assesses fourth-, eighth-, and twelfth-grade students in subjects such as reading, mathematics, science, and writing. The reporting of NAEP scores on state report cards is a federal mandate. The results of NAEP are also published as the Nation's Report Card, and are available for the nation, states, and, in some cases, urban districts. The NAEP scores on the report card include grades four and eight 2015 reading and math scores for New Jersey which are the last scores published.

For subgroup outcomes, visit:

- Reading Grade 4 <http://www.nj.gov/education/pr/1415/naep/naep4read.html>
- Reading Grade 8 <http://www.nj.gov/education/pr/1415/naep/naep8read.html>
- Math Grade 4 <http://www.nj.gov/education/pr/1415/naep/naep4math.html>
- Math Grade 8 <http://www.nj.gov/education/pr/1415/naep/naep8math.html>

For more information, visit <http://nces.ed.gov/nationsreportcard/>

Proficiency Percentages

Subject	Grade	State/Nation	Below Basic	Basic	Proficient	Advanced
Reading	Grade 4	State (NJ)	25	33	31	12
	Grade 4	Nation	31	33	27	9
	Grade 8	State (NJ)	20	39	35	6
	Grade 8	Nation	24	42	31	4
Math	Grade 4	State (NJ)	14	39	38	9
	Grade 4	Nation	18	42	33	7
	Grade 8	State (NJ)	21	32	30	16
	Grade 8	Nation	29	38	25	8

ACADEMIC ACHIEVEMENT

**MONMOUTH
OCEANPORT BORO**

GRADE SPAN PK-04

**WOLF HILL ELEMENTARY SCHOOL
29 WOLF HILL AVENUE
OCEANPORT, NJ 07757-1000**

NJASK Results - Science Grade Level - 04

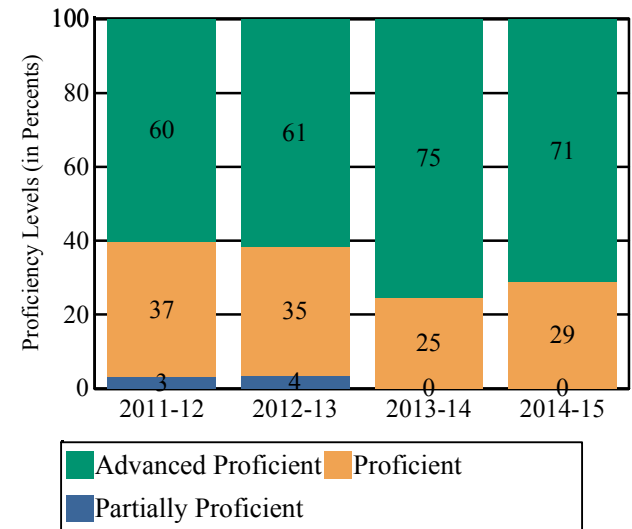
This table presents the grade level proficiency results, as measured by NJASK, in Advanced Proficient, Proficient, and Partially Proficient categories for all appropriate subgroups.

Subgroups	Advanced Proficient	Proficient	Partially Proficient
Schoolwide	71%	29%	0%
White	68%	32%	0%
African American	-	-	-
Hispanic	-	-	-
American Indian	-	-	-
Asian	-	-	-
Two or More Races	-	-	-
Students with Disability	-	-	-
English Language Learners	-	-	-
Economically Disadvantaged Students	-	-	-

Data is presented for subgroups when the count is high enough under ESEA Waiver suppression rules.

NJASK Proficiency Trends - Science - Grade Level - 04

This graph presents the grade level outcomes in the categories of Advanced Proficient, Proficient, and Partially Proficient over the last four years.



COLLEGE AND CAREER READINESS

MONMOUTH
OCEANPORT BORO

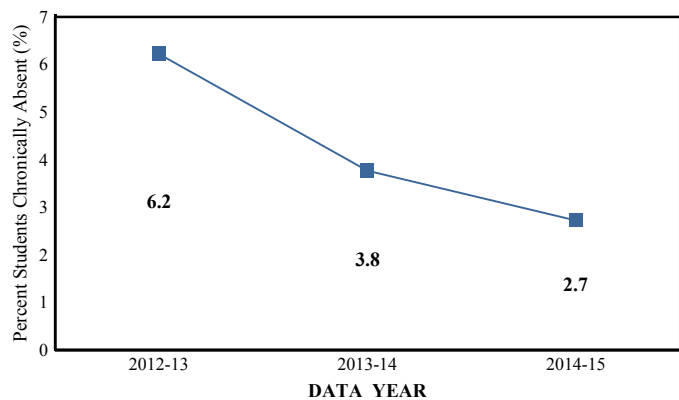
WOLF HILL ELEMENTARY SCHOOL
29 WOLF HILL AVENUE
OCEANPORT, NJ 07757-1000

GRADE SPAN PK-04

Students in both elementary and middle schools begin to demonstrate college readiness behaviors long before they even enter high school. Among the behaviors that research has shown to be indicative of successfully graduating high school is regularly attending school. For all elementary schools, this includes the percentage of students that are chronically absent each year, defined as missing more than 10% of possible school days.

Chronic Absenteeism Trend

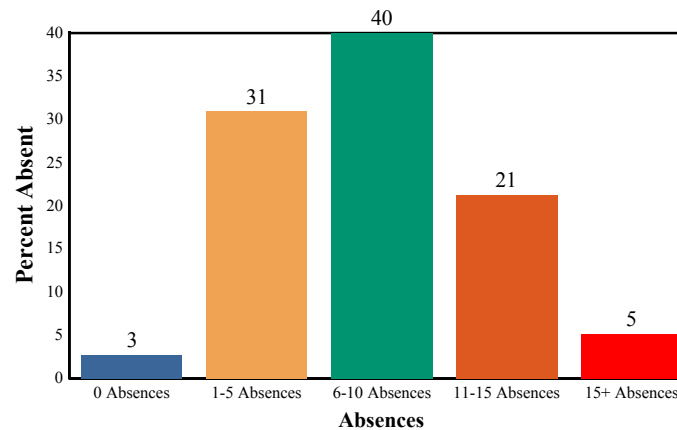
This graph presents the percentage of the enrolled students who were chronically absent for the past three years.



Chronic Absenteeism for 2014-15	2.73%
--	--------------

Absenteeism

The chart below presents the percentage of students who were absent in each category of absence: 0 absences, 1- 5 absences, 6 - 10 absences, 11 - 15 absences, and more than 15 absences. An absence is defined as being ‘not present’ and includes the days missed regardless of whether they were determined to be excused or unexcused by the school.



0 Absences	1-5 Absences	6-10 Absences
11-15 Absences	15+ Absences	

STUDENT GROWTH

MONMOUTH

OCEANPORT BORO

WOLF HILL ELEMENTARY SCHOOL

29 WOLF HILL AVENUE

OCEANPORT, NJ 07757-1000

GRADE SPAN PK-04

This section of the performance report presents data about student growth, utilizing the Student Growth Percentile Methodology (SGP). SGP creates a measure of how students progressed in grades 4 through 8 in Language Arts Literacy and in grades 4 through 7 in Math when compared to other students with a similar test score history. A short video explaining the methodology can be found here: <http://www.state.nj.us/education/njsmart/performance/>

The below chart consist of five columns with measures. The first column - Schoolwide Performance - presents the schoolwide median growth score in either English Language Arts/Literacy or Mathematics for all students in the school. The second column - Peer Percentile - indicates how the school's growth performance compares to its group of peer schools. The third column - Statewide Percentile - indicates how a school compares to schools across the state. The last column - Met Target? - indicates whether the school's performance met or exceeded the statewide target, which was set to 35.

The fourth row presents the averages of the peer school percentiles, the averages of statewide percentiles, the percentage of statewide targets met.

Student Growth Indicators	Schoolwide Performance	Peer Percentile	Statewide Percentile	Statewide Target	Met Target?
Student Growth on Language Arts	47	31	36	35	YES
Student Growth on Math	60	66	75	35	YES
		49	56		100%

Student Growth

This table presents for all students with growth scores the interaction between their performance on PARCC and their growth scores. For example, in the top left cell the percentage of students who are both in Level 1 - Did not yet meet expectations AND also demonstrating low growth is displayed.

Language Arts

(Expectations)	GROWTH		
	Low	Typical	High
Did Not Yet Meet	2%	0%	0%
Partially Met	6%	0%	2%
Approached	18%	8%	0%
Met	8%	16%	27%
Exceeded	2%	6%	6%

Math

(Expectations)	GROWTH		
	Low	Typical	High
Did Not Yet Meet	2%	0%	0%
Partially Met	4%	6%	2%
Approached	10%	15%	19%
Met	10%	12%	15%
Exceeded	0%	0%	6%

Low Growth is defined as an **Student Growth Percentile** score less than 35.

Typical Growth is defined as an **Student Growth Percentile** score between 35 and 65.

High Growth is defined as a **Student Growth Percentile** score higher than 65.

WITHIN SCHOOL ACHIEVEMENT GAP

**MONMOUTH
OCEANPORT BORO**

GRADE SPAN PK-04

**WOLF HILL ELEMENTARY SCHOOL
29 WOLF HILL AVENUE
OCEANPORT, NJ 07757-1000**

This section of the performance report presents data about the achievement gap that exists within a school - as measured by the difference between the students' scale scores at the 25th and 75th percentile in the school, the Interquartile Range (IQR). Taken together with an understanding of the overall and average achievement levels in the school, the IQR furthers an understanding of the range of student outcomes that exist in a school. A school gap smaller than the state gap indicates that the school's range of student outcomes is narrower than the state's while a school gap larger than the state gap indicates that the school's range of student outcomes is broader than the state's.

Grade Level - 03

PARCC Language Arts 25th %ile vs 75th%ile

This table presents the scale scores associated with students at the bottom (0th percentile), the 25th percentile, the 50th percentile, the 75th percentile and the top (99th percentile) of school's distribution.

Percentile	School Scale Score	State Scale Score
99th	823	850
75th	776	770
50th	753	743
25th	727	715
0th	686	650

	Scale Score Gap - School	Scale Score Gap - State
25th vs 75th Gap	49	55

Grade Level - 03

PARCC MATH 25th %ile vs 75th%ile

This table presents the scale scores associated with students at the bottom (0th percentile), the 25th percentile, the 50th percentile, the 75th percentile and the top (99th percentile) of school's distribution.

Percentile	School Scale Score	State Scale Score
99th	791	850
75th	763	767
50th	747	745
25th	731	722
0th	697	650

	Scale Score Gap - School	Scale Score Gap - State
25th vs 75th Gap	32	45

WITHIN SCHOOL ACHIEVEMENT GAP

MONMOUTH

OCEANPORT BORO

GRADE SPAN PK-04

Grade Level - 04

PARCC Language Arts 25th %ile vs 75th%ile

This table presents the scale scores associated with students at the bottom (0th percentile), the 25th percentile, the 50th percentile, the 75th percentile and the top (99th percentile) of school's distribution.

Percentile	School Scale Score	State Scale Score
99th	813	850
75th	777	773
50th	759	750
25th	741	728
0th	692	650

	Scale Score Gap - School	Scale Score Gap - State
25th vs 75th Gap	36	45

Grade Level - 04

PARCC MATH 25th %ile vs 75th%ile

This table presents the scale scores associated with students at the bottom (0th percentile), the 25th percentile, the 50th percentile, the 75th percentile and the top (99th percentile) of school's distribution.

Percentile	School Scale Score	State Scale Score
99th	810	850
75th	766	764
50th	746	742
25th	733	721
0th	696	650

	Scale Score Gap - School	Scale Score Gap - State
25th vs 75th Gap	33	43

SCHOOL CLIMATE

MONMOUTH

OCEANPORT BORO

GRADE SPAN PK-04

Length of School Day

This table presents the amount of time a school is in session for a typical student on a normal school day.

	School
2014-15	6 Hrs. 30 Mins.

Student Suspension Rate

This table presents the percentage of students who were suspended one or more times during the school year.

	School
2014-15	0.0%

Instructional Time

This table presents the amount of time that a typical student is engaged in instructional activities under the supervision of a certified teacher.

2014-15	School
Full Time	5 Hrs. 45 Mins.
Shared Time	0 Hrs. 0 Mins.

Student Expulsions

This table presents the number of students who were expelled from the school and district during the school year.

	School
2014-15	0

Student to Staff Ratio

This table presents the count of students per faculty member or administrator in the school. All staff are counted in full-time equivalents.

2014-15	School
Faculty	13
Administrators	170

SCHOOL PEER GROUP

MONMOUTH

OCEANPORT BORO

GRADE SPAN PK-04

WOLF HILL ELEMENTARY SCHOOL

29 WOLF HILL AVENUE

OCEANPORT, NJ 07757-1000

This table presents the list of peer schools in alphabetical order by county name that was created specifically for this school (highlighted in yellow). Peer schools are drawn from across the state and represent schools that have similar grade configurations and that are educating students of similar demographic characteristics, as measured by enrollment in Free/Reduced Lunch Programs, Limited English Proficiency or Special Education Programs.

<u>COUNTY NAME</u>	<u>DISTRICT NAME</u>	<u>SCHOOL NAME</u>	<u>CDS CODE</u>	<u>GRADES PAN</u>	<u>ECONOMICALLY DISADVANTAGED</u>	<u>ENGLISH LANGUAGE LEARNERS</u>	<u>SPECIAL EDUCATION</u>
BERGEN	HILLSDALE BORO	ANN BLANCHE SMITH	03-2180-010	KG-04	9.1%	2.3%	14.7%
BERGEN	RUTHERFORD BORO	WASHINGTON SCHOOL	03-4600-110	01-03	9.3%	1.8%	8.6%
BERGEN	WESTWOOD REGIONAL	BROOKSIDE ELEMENTARY SCHOOL	03-5755-070	KG-05	10%	3.9%	9.7%
BURLINGTON	MEDFORD TWP	CHAIRVILLE ELEMENTARY SCHOOL	05-3080-030	KG-05	8.6%	0.5%	16.8%
BURLINGTON	MEDFORD TWP	MILTON H. ALLEN ELEMENTARY SCHOOL	05-3080-060	KG-05	8.9%	0%	16.4%
BURLINGTON	MOORESTOWN TWP	GEORGE C. BAKER ELEMENTARY SCHOOL	05-3360-060	PK-03	8.6%	0%	12.4%
BURLINGTON	MOORESTOWN TWP	SOUTH VALLEY ELEMENTARY SCHOOL	05-3360-120	PK-03	8.6%	0%	9.1%
CAMDEN	CHERRY HILL TWP	A. RUSSELL KNIGHT ELEMENTARY SCHOOL	07-0800-058	KG-05	8.5%	0.6%	14.5%
CAMDEN	CHERRY HILL TWP	RICHARD STOCKTON ELEMENTARY SCHOOL	07-0800-113	KG-05	9.1%	1%	19.6%
CAMDEN	CHERRY HILL TWP	WOODCREST ELEMENTARY SCHOOL	07-0800-130	KG-05	8.5%	0.3%	16.5%
CAMDEN	VOORHEES TWP	SIGNAL HILL SCHOOL	07-5400-095	PK-05	8.1%	0.9%	18.5%
ESSEX	BLOOMFIELD TWP	BROOKDALE ELEMENTARY	13-0410-060	PK-06	7.9%	0%	12%
ESSEX	BLOOMFIELD TWP	OAK VIEW ELEMENTARY	13-0410-140	PK-06	8.9%	1.1%	13.4%
ESSEX	MONTCLAIR TOWN	WATCHUNG ELEMENTARY SCHOOL	13-3310-170	KG-05	8.4%	0%	10.9%
ESSEX	NUTLEY TOWN	LINCOLN SCHOOL	13-3750-070	PK-06	9.7%	2.5%	25.6%
HUNTERDON	READINGTON TWP	THREE BRIDGES SCHOOL	19-4350-060	PK-03	8.4%	1.2%	12%
HUNTERDON	READINGTON TWP	WHITEHOUSE SCHOOL	19-4350-070	KG-03	8.8%	0.6%	14.9%
MIDDLESEX	EDISON TWP	WOODBROOK ELEMENTARY SCHOOL	23-1290-160	KG-05	7.5%	0.1%	3.7%
MIDDLESEX	OLD BRIDGE TWP	WALTER M. SCHIRRA ELEMENTARY SCHOOL	23-3845-165	KG-05	8.4%	0%	13.8%
MONMOUTH	HOWELL TWP	ADELPHIA ELEMENTARY SCHOOL	25-2290-003	KG-05	8%	0%	15.7%
MONMOUTH	MANALAPAN-ENGLISHTOWN REG	CLARK MILLS SCHOOL	25-2920-050	KG-05	7.5%	0.2%	12.4%

SCHOOL PEER GROUP

MONMOUTH

OCEANPORT BORO

WOLF HILL ELEMENTARY SCHOOL
29 WOLF HILL AVENUE
OCEANPORT, NJ 07757-1000

GRADE SPAN PK-04

MONMOUTH	MIDDLETOWN TWP	MIDDLETOWN VILLAGE ELEMENTARY SCHOOL	25-3160-130	KG-05	8.2%	1.2%	19.4%
MONMOUTH	OCEANPORT BORO	WOLF HILL ELEMENTARY SCHOOL	25-3830-050	PK-04	8.5%	0.6%	16.1%
MONMOUTH	UPPER FREEHOLD REGIONAL	NEWELL ELEMENTARY SCHOOL	25-5310-060	PK-04	9%	2.1%	18.8%
MONMOUTH	WALL TWP	CENTRAL ELEMENTARY SCHOOL	25-5420-070	KG-05	8.5%	0%	15.4%
MORRIS	ROXBURY TWP	JEFFERSON ELEMENTARY SCHOOL DISTRICT	27-4560-065	KG-04	9.3%	2.1%	10.5%
PASSAIC	RINGWOOD BORO	ELEANOR G. HEWITT	31-4400-050	04-05	9%	0.4%	24.2%
SOMERSET	BRIDGEWATER-RARITAN REG	BRADLEY GARDENS ELEMENTARY SCHOOL	35-0555-040	KG-04	7.9%	0%	11%
SOMERSET	HILLSBOROUGH TWP	AUTEN ROAD INTERMEDIATE SCHOOL	35-2170-034	05-06	7.9%	0.4%	17.2%
UNION	SCOTCH PLAINS-FANWOOD REG	SCHOOL ONE	39-4670-070	PK-04	9.6%	2.5%	14.3%
WARREN	GREENWICH TWP	GREENWICH SCHOOL	41-1840-040	PK-05	8.2%	0.2%	11.6%