

NJ Transit reports: Rail service in and out of Penn Station New York is subject to up to 60-minute delays due to an Amtrak track condition in the one of the Hudson River Tunnels. NJ TRANSIT rail tickets and passes are being cross honored by NJ TRANSIT bus and private carriers and PATH at Newark Hoboken and 33rd Street. Midtown Direct service is being diverted to Hoboken.

NJ Transit reports: Rail service in and out of Penn Station New York is subject to up to 60-minute delays due to an Amtrak track condition in the one of the Hudson River Tunnels. NJ TRANSIT rail tickets and passes are being cross honored by NJ TRANSIT bus and private carriers and PATH at Newark Hoboken and 33rd Street. Midtown Direct service is being diverted to Hoboken.

- Home
About
Traffic
Traffic Map
Cameras
Mega Projects
Travel Links
FAQs
511NJ Partners
RSS
Twitter

New Jersey Truck Parking Locations information can be found here

Manage Layout

Popular Travel Routes

Driving times for...

Table with 2 columns: Route Name and Time. Includes Toll Roads, NJ Turnpike Southbound, and various interchanges like GW Bridge to Interchange 18W.

Camera - NJ 38 at Airport Circle



View More

STILL IMAGES

Arterial Travel Routes

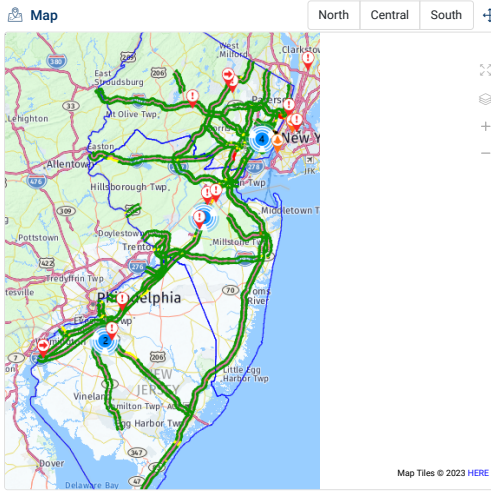
Driving times for...

Table with 2 columns: Roadway and County. Lists routes like US Route, US 22, and various eastbound/westbound paths.

Current Incidents

- List of traffic incidents with details: time, location, and description (e.g., 'Crash on US 46 westbound West of CR 513/West Main St').

View More



NJ Transit



Port Authority of NY&NJ

Table with 3 columns: EWR, LGA, JFK.

Current Parking Lot Status*

Table with 3 columns: Lot Name, Last Updated, Percent Occupied. Lists parking lots like Short-Term Parking A, B, C, P4, P6.

View Detailed EWR Information | Reserve a parking space

*Handicapped and reserved spaces are available for those with valid permits. Parking information is subject to change at any time.

My Transit*

- Buttons for Rail, Bus, Light Rail. List of transit regions: Northeast Corridor, North Jersey Coast, Raritan Valley, Morris & Essex, Main/Bergen/Port Jervis, Montclair-Boonton, Pascack Valley, Atlantic City.

*NJ TRANSIT updates Travel Alerts 6 AM - 10 PM on weekdays and 10 AM - 7 PM on weekends.

Mega Projects

Project cards for I-295/I-76/Route 42 Direct Connection and I-295 Direct Connection with details on routes and times.

View More

Safety Message



"New Jersey Traffic" on Voice Assistants

