

974.905

044.4

C-1

DEPARTMENT OF HUMAN SERVICES

INTER-OFFICE COMMUNICATION

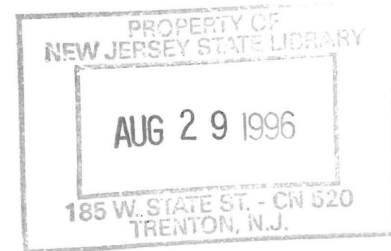
DATE August 19, 1996

TO William Waldman
Commissioner

FROM Karen Highsmith
Acting Director

SIGNED

SUBJECT CURRENT PROGRAM STATISTICS



Attached please find CURRENT PROGRAM STATISTICS, including the FDP Statistical Summary for June 1996, with additional data on GA Emergency Assistance. Also included are explanatory notes for the various data elements.

Should you have any questions, please feel free to call me.

KH:kas:c

Attachments

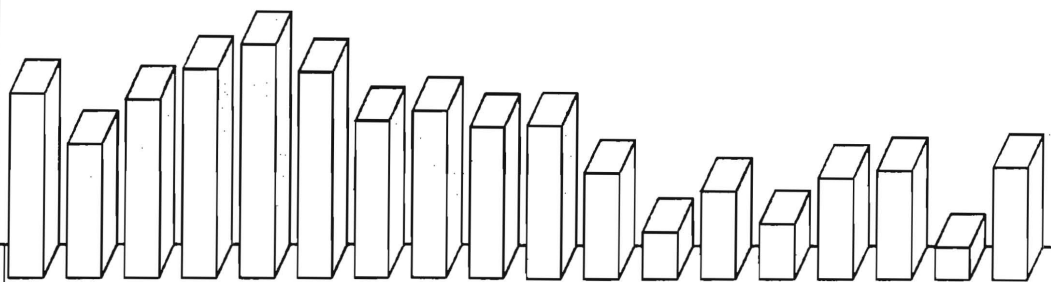
c Guhl
Grant
Tencza

*State of New Jersey
Department of Human Services
Division of Family Development*

CURRENT PROGRAM STATISTICS

June 1996

Karen Highsmith, Acting Director



State of New Jersey
 Department of Human Services
 Division of Family Development

CURRENT PROGRAM STATISTICS
 June 1996

TABLE OF CONTENTS

	Page
Highlights of Current Program Statistics	1-3
 Statistics by County, June 1996	
Table 1 AFDC	4
Graph 1 Current AFDC Families.....	5
Table 2 Food Stamp Program.....	6
Graph 2 Current Food Stamp Households/Persons	7
Table 3 AFDC/SSI Emergency Assistance Program	8
Graph 3 Current AFDC Families Receiving Emergency Assistance	9
Table 4 Family Development Program.....	10
 State Summary, 1994 - 1996	
Table 5 AFDC, June 1994 - June 1996	12
Graph 4 Families Receiving AFDC, 6/94 - 6/96	12
Table 6 Food Stamp Program, June 1994 - June 1996.....	13
Graph 5 Food Stamp Households, 6/94 - 6/96	14
Graph 6 Food Stamp Recipients, 6/94 - 6/96.....	15
Table 7 AFDC Emergency Assistance Program, June 1994 - June 1996	16
Graph 7 AFDC Families Receiving Emergency Assistance, 6/94 - 6/96	17
Table 8 JOBS/FDP Participation Rates, by County and Statewide, June 1994 - June 1996	18
Graph 8 JOBS/FDP Participation Rates, 6/94 - 6/96	18-19
Table 9 General Assistance, and GA Emergency Assistance, February 1994 - February 1996	20
Graph 9 General Assistance Recipients, 2/94 - 2/96	21
Table 10 Child Support and Paternity, Fiscal Years 1994-1996	22
Explanatory Notes.....	23-24
 Supplement	
Table 11 General Assistance Recipients and EA Payments by County and Municipality, February 1996	25
Table 12 Child Support and Paternity Cases Remaining Open, Quarter Ending June 1996	26

Highlights of Current Program Statistics

AFDC (Tables 1 and 5, Graphs 1 and 4)

113,200 eligible families in New Jersey were receiving AFDC as of the end of June 1996:

- 102,000 single head of household families (Regular AFDC, C segment).
- Among two-parent families, 3000 Unemployed Parent families (F Segment) and 3100 State AFDC families (N Segment).
- 5100 Medicaid Only families.
- The largest numbers of families by county: Essex with 28,700, Hudson with 18,000, and Camden County with 13,000. (52.7 percent of all AFDC families)
- Other counties ranged from under 200 families in Hunterdon to 7,300 in Passaic County.

There were about 700 fewer eligible families in June 1996 than in May 1996, with a total decline of more than 11,000 over the past two years since the June 1994 level of 124,600.

- There were also about 700 fewer eligible C segment families in June 1996 than in May 1996 and almost 10,000 less than the June 1994 level of 111,800.
- F segment families declined from about 4400 in June 1994 to about 3200 by October 1995, with a further decline to 3,000 by June 1996.
- State AFDC (N segment) was about 3500 in June 1994 and slowly declined to about 3100 by June 1996.
- Medicaid Only families remained at or below 5000 in 1994, but averaged nearly 5200 for 1995. For the first six months of 1996 they have averaged over 5000.

FOOD STAMP PROGRAM (Tables 2 and 6, Graphs 2, 5, and 6)

At the end of May 1996, about 220,000 households were participating in the Food Stamp Program:

- 107,000 AFDC households with 335,000 persons.
- 113,000 Other Low Income households with 172,000 persons.
- 48 percent were in Essex (55,000), Hudson (30,000) and Camden (21,000) Counties.
- Food Stamp households included about 507,000 persons, almost 243,500 adults and 263,500 children.
- In June, the number of adults exceeded the number of children in Food Stamp households in eight counties (Atlantic, Bergen, Hunterdon, Monmouth, Morris, Somerset, Sussex, and Warren).

There were 222,000 Food Stamp households in New Jersey in June 1994. The number has remained around the 220,000 to 223,000 range since then, except for a peak in March 1995 of almost 225,000.

- The number of Other Low Income households continues to rise and has exceeded the number of AFDC(FS) households since November 1995, with a difference of 6000 in June 1996. Other Low Income households receiving Food Stamps averaged 106,000 for all of 1994, and were up to more than 113,000 for the first six months of 1996. AFDC(FS) households averaged nearly 115,000 for 1994, and only 109,000 for the first six months of 1996.
- Total Recipients were almost 530,000 in June 1994 and again in March 1995. Trending downward, with some fluctuations, the June 1996 level of 507,000 was the lowest in two years.
- The number of Recipient Adults averaged about 246,000 for 1994, 1995 and the first six months of 1996. There were peaks of 250,000 in March 1995 and nearly 248,000 in March 1996.
- The average number of Recipient Children was 279,000 for all of 1994, 273,000 in 1995, and less than 267,000 for the first six months of 1996.

EMERGENCY ASSISTANCE (Tables 3, 7 and 9, Graphs 3, 7 and 9)

In June 1996 4,791 eligible AFDC families and 384 SSI recipients received Emergency Assistance (EA) payments in New Jersey. For AFDC families this included:

- 1,772 families with Temporary Rental Assistance (TRA)
- 266 motel placements and 341 emergency shelter placements
- All other AFDC-EA accounted for 2,412 families, including back rent, back utilities, security deposits, furnishings, clothing and food allowance, or transitional housing.
- 1,303 AFDC families in Essex County received EA, with 714 in Middlesex, 562 in Passaic, and 394 in Bergen. All other counties had between 7 and 288, with nine counties under 100.

The average number of AFDC families receiving EA payments was 7300 in 1994. The average dropped to 5800 in 1995, and 4900 for the first six months of 1996.

- The number of AFDC families provided TRA each month has declined steadily from an average of 3200 in 1994 to 1800 for the first six months of 1996.
- Emergency Shelter has been provided to an average of under 400 AFDC families for 1994, 1995 and the first six months of 1996.
- Motel Housing declined from an average of about 470 in 1994, to 400 in 1995, and to about 300 for the first six months of 1996.
- An average of 3300 families received Other EA in 1994 and 2800 in 1995. The number dropped to less than 2100 in February 1996 but averaged almost 2500 for the first half of 1996.

For GA recipients, more than 7200 received EA in February 1996, including 4600 with TRA. For 1994 there were an average of 7800 GA EA recipients and for 1995 about 7400.

JOBS/FDP PARTICIPATION RATES (Table 8, Graph 8)

The Statewide JOBS/FDP participation rate of 26.9 percent in June 1996 was the first decline since February, with a 1.7 percent drop from the record level of May. Nevertheless, this is more than three points above June 1995 and over eight points above two years ago when the rate was only 18.3 percent. A clear upward shift continues to be evident.

- Since June 1994, most counties have shown upward movement in participation rates. With some fluctuations, Burlington, Cape May, Essex, Gloucester, Hudson, Middlesex, Monmouth, Ocean, Passaic and Union showed clear upward movement. Bergen, Camden, and Mercer have had little or no increase overall. Cumberland has maintained high participation rates. Atlantic, Salem, Somerset, Sussex, and Warren also exhibited high rates, but have had wide fluctuations. Hunterdon jumped to higher levels during 1995. Morris increased markedly in 1995 and 1996, and reached 100 percent in June.
- For June 1996 County rates were distributed as follows:
 - 12 to 20 percent -- Camden and Essex
 - 20 to 30 percent -- Bergen, Cape May, Gloucester, Hudson, Ocean and Union
 - 30 to 40 percent -- Burlington, Mercer, Middlesex, Monmouth, Passaic and Salem
 - 40 to 60 percent -- Atlantic, Hunterdon, Warren and Sussex
 - over 60 percent -- Cumberland, Morris, and Somerset
- From May to June 1996, participation rates increased in only three counties, Essex, Hunterdon, and Morris.

GENERAL ASSISTANCE (Table 9, Graph 9)

For the period February 1994 through February 1996 (the latest available information), the number of GA recipients peaked at 38,100 in March 1994. The level held around 35,000 from September 1994 through April 1995, and has been below 34,000 each month thereafter.

- The number of employable recipients peaked in March 1994 at 26,400, then declined to a low of 21,000 in July 1995, with spikes at about 24,000 in January and March 1995. For the following six months the level steadily increased to over 23,000 by January 1996, then declined by about 600 in February.
- Over the two year period Unemployable GA recipients remained within a relatively narrow range then began to decline noticeably. The level remained between 11,000 and 12,300 from October 1993 through July 1995. From July 1995 through January 1996 Unemployable GA recipients declined to about 10,000, but increased by almost 900 in February.

CHILD SUPPORT AND PATERNITY COLLECTIONS (Table 10)

Total collections of the Child Support and Paternity Program declined by 2.2 percent, from \$574 million in SFY 1995 to \$561 million in SFY 1996.

- AFDC/Foster Care collections remained nearly unchanged at over \$95 million, with an increase of only \$200 thousand or 0.2 percent. Non-AFDC collections dropped from \$479 million to \$466 million, a decline of 2.7 percent.
- Total Federal tax and UIB collections each increased by \$6 million, which was more than offset by a decline of \$27 million (15 percent) in the Other/Own Behalf category.

New Jersey Department of Human Services
Division of Family Development

TABLE 1

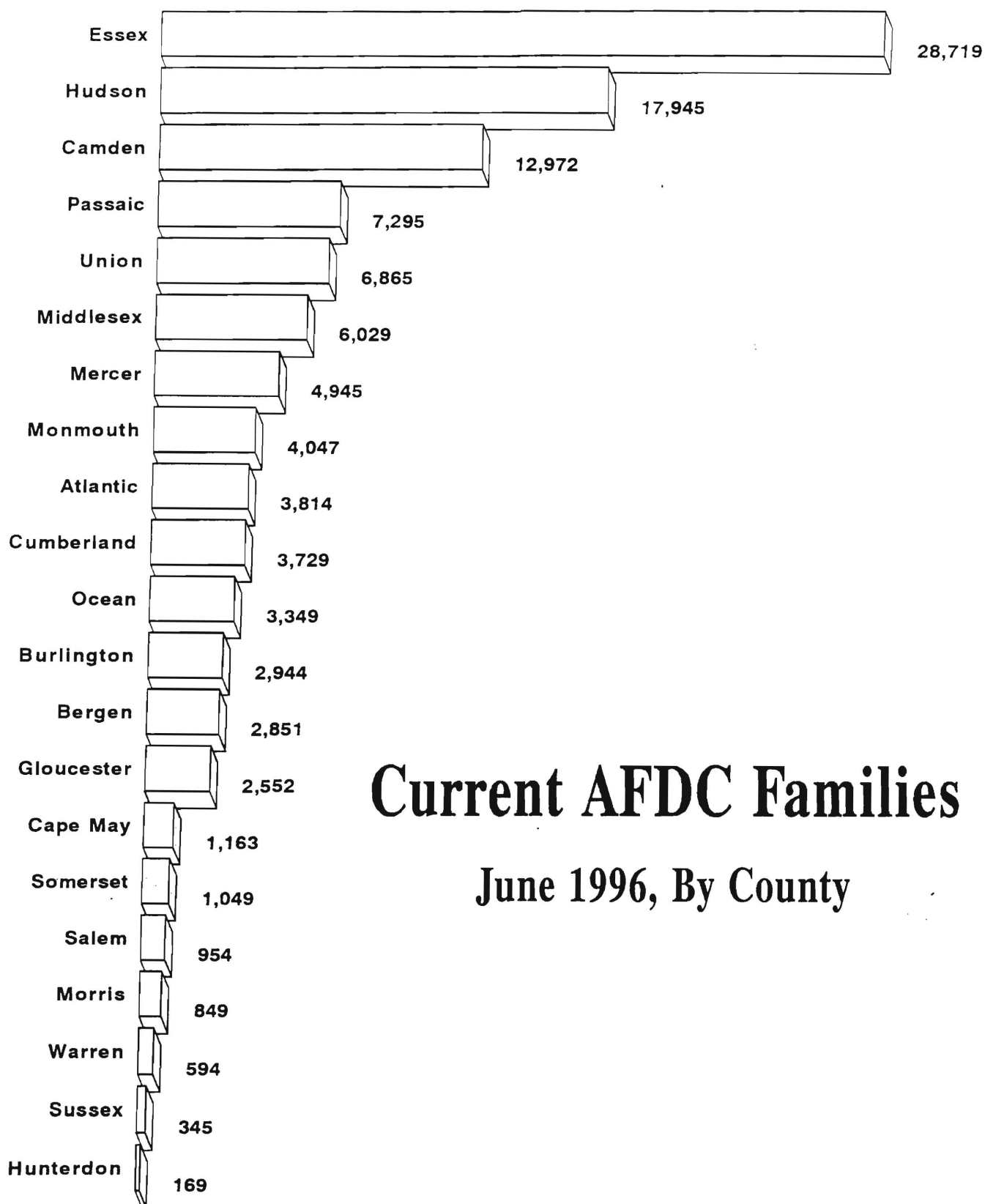
AFDC Program

**NUMBER OF APPLICATIONS AND TERMINATIONS DURING REPORT MONTH, AND
NUMBER OF ELIGIBLE FAMILIES RECEIVING AFDC AT END OF REPORT MONTH**

June 1996

County	Applications Approved	Terminations	Regular AFDC (C Segment)	Unemployed Parents (F)	State AFDC (N)	Medicaid Only	TOTAL AFDC
Atlantic	273	325	3,487	119	71	137	3,814
Bergen	117	150	2,529	127	113	82	2,851
Burlington	240	271	2,554	83	82	225	2,944
Camden	669	687	11,358	515	379	720	12,972
Cape May	71	119	945	62	83	73	1,163
Cumberland	205	298	3,123	182	208	216	3,729
Essex	944	1,005	27,315	421	223	760	28,719
Gloucester	152	201	2,200	124	71	157	2,552
Hudson	525	639	16,104	330	628	883	17,945
Hunterdon	22	14	139	4	7	19	169
Mercer	371	443	4,426	87	100	332	4,945
Middlesex	386	376	5,040	231	267	491	6,029
Monmouth	207	248	3,753	73	165	56	4,047
Morris	48	76	768	27	23	31	849
Ocean	187	240	2,834	141	147	227	3,349
Passaic	314	358	6,695	273	260	67	7,295
Salem	80	87	845	17	30	62	954
Somerset	112	124	848	43	34	124	1,049
Sussex	30	40	283	9	3	50	345
Union	328	372	6,199	103	194	369	6,865
Warren	38	48	502	28	29	35	594
NJ TOTAL	5,319	6,121	101,947	2,999	3,117	5,116	113,179

Data Sources: Data is derived from NJ Division of Family Development's FAMIS report # FF-012.

GRAPH 1

New Jersey Department of Human Services
Division of Family Development

TABLE 2

FOOD STAMP Program

**NUMBER OF ATP'S ISSUED TO HOUSEHOLDS, PERSONS, ADULTS
AND CHILDREN AT THE END OF THE REPORT MONTH**

June 1996

County	HOUSEHOLDS			PERSONS				
	AFDC	Other low income	TOTAL	TOTAL	AFDC	Other low income	Adults	Children
Atlantic	3,498	4,871	8,369	18,051	11,318	6,733	9,027	9,024
Bergen	2,615	5,699	8,314	16,515	7,811	8,704	9,696	6,819
Burlington	2,649	2,845	5,494	12,599	8,005	4,594	6,187	6,412
Camden	12,378	8,895	21,273	53,105	40,277	12,828	23,916	29,189
Cape May	1,107	1,176	2,283	5,763	3,722	2,041	2,747	3,016
Cumberland	3,628	2,751	6,379	16,451	12,051	4,400	7,543	8,908
Essex	28,053	27,080	55,133	125,691	86,718	38,973	59,148	66,543
Gloucester	2,276	1,844	4,120	10,062	7,054	3,008	4,755	5,307
Hudson	16,965	13,048	30,013	72,046	51,717	20,329	32,784	39,262
Hunterdon	133	350	483	959	388	571	549	410
Mercer	4,508	4,497	9,005	19,620	13,793	5,827	9,358	10,262
Middlesex	5,517	6,040	11,557	25,744	16,501	9,243	12,807	12,937
Monmouth	3,867	6,321	10,188	21,959	12,285	9,674	11,380	10,579
Morris	740	1,809	2,549	5,050	2,178	2,872	2,969	2,081
Ocean	3,318	4,537	7,855	19,729	10,885	8,844	9,298	10,431
Passaic	6,978	9,838	16,816	38,987	22,912	16,075	18,854	20,133
Salem	859	754	1,613	3,957	2,771	1,186	1,818	2,139
Somerset	982	1,915	2,897	5,665	2,861	2,804	3,128	2,537
Sussex	309	639	948	2,100	908	1,192	1,133	967
Union	5,933	6,963	12,896	29,254	18,860	10,394	14,432	14,822
Warren	562	1,016	1,578	3,619	1,747	1,872	1,893	1,726
NJ TOTAL	106,875	112,888	219,763	506,926	334,762	172,164	243,422	263,504

ATP - Authorization to Participate, may include some duplication

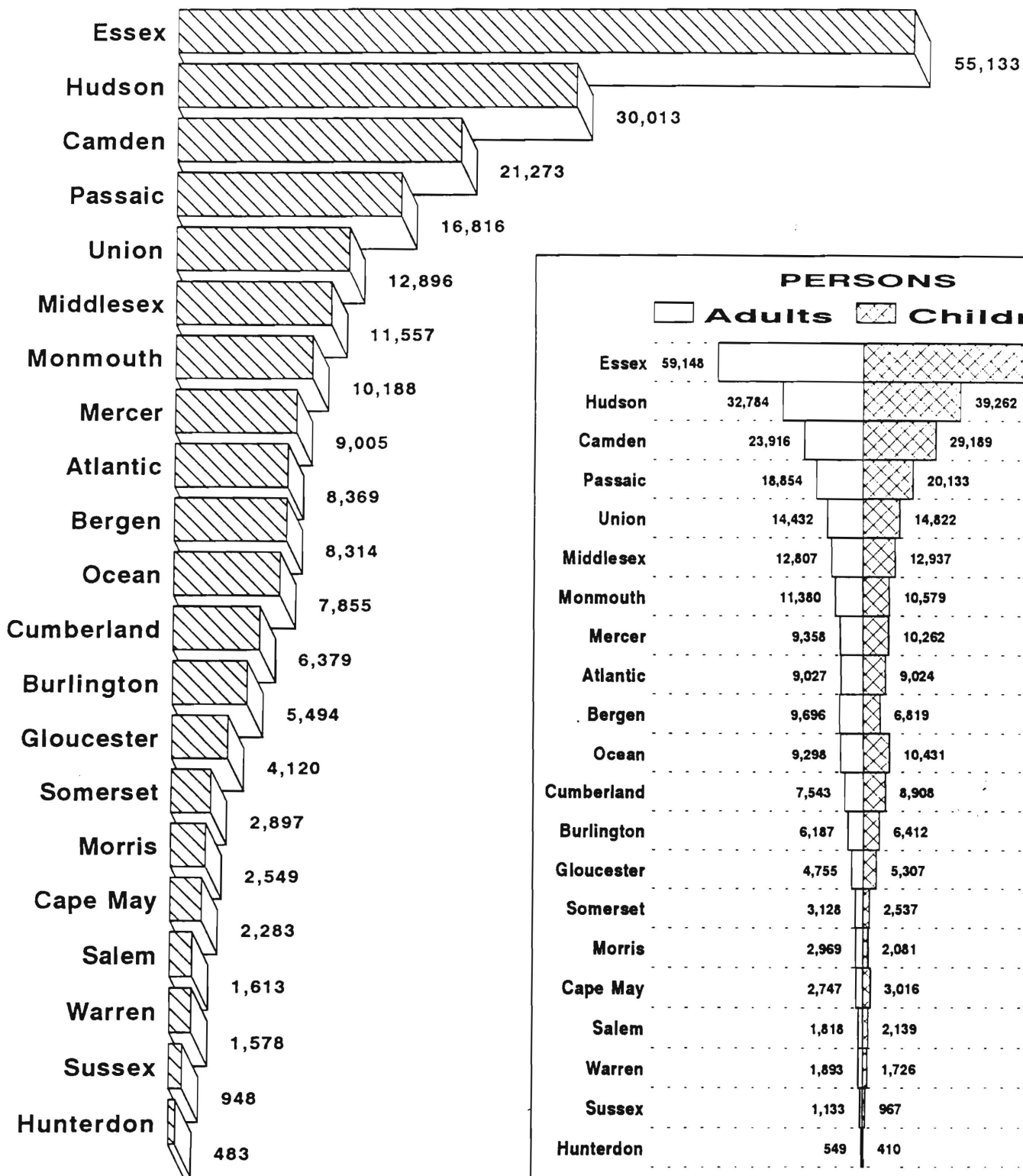
Data Sources: Data is derived from NJ Division of Family Development's FAMIS report # FB-160.

GRAPH 2

Food Stamp Households

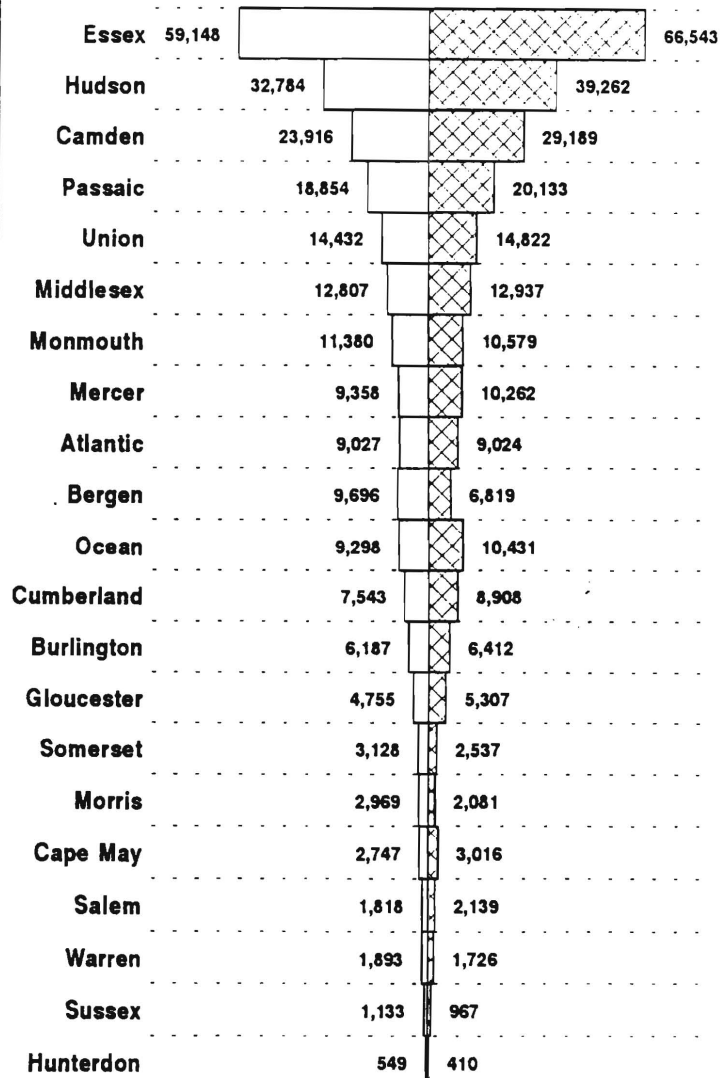
June 1996, By County

HOUSEHOLDS



PERSONS

Adults Children



New Jersey Department of Human Services
Division of Family Development

TABLE 3

AFDC/SSI EMERGENCY ASSISTANCE RECIPIENTS

NUMBER OF ELIGIBLE FAMILIES RECEIVING EMERGENCY ASSISTANCE PAYMENTS
(UNDUPLICATED CASES)

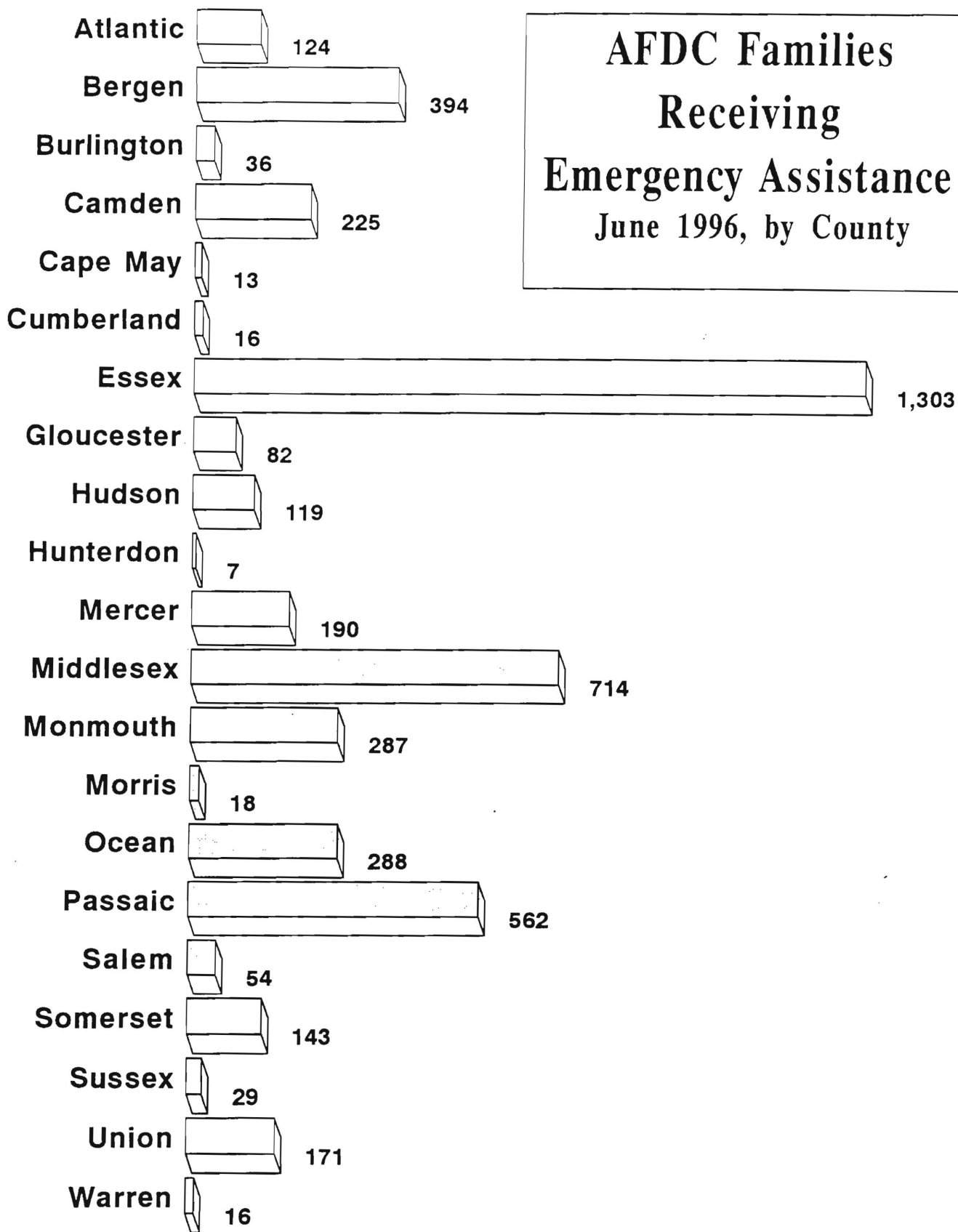
June 1996

County	AFDC Families Receiving Emergency Assistance					SSI Recipients Receiving EA
	TOTAL AFDC -EA	Temporary Rental Assist	Motel Housing	Emergency Shelter	Other AFDC-EA	
ATLANTIC	124	39	4	18	63	36
BERGEN	394	236	27	30	101	20
BURLINGTON	36	3	0	27	6	8
CAMDEN	225	73	0	8	144	15
CAPE MAY	13	6	0	0	7	4
CUMBERLAND	16	1	1	9	5	3
ESSEX	1,303	592	33	64	614	55
GLOUCESTER	82	33	0	28	21	4
HUDSON	119	15	5	21	78	3
HUNTERDON	7	2	1	2	2	1
MERCER	190	87	18	7	78	19
MIDDLESEX	714	374	26	29	285	37
MONMOUTH	287	128	38	4	117	10
MORRIS	18	1	1	11	5	10
OCEAN	288	120	64	4	100	48
PASSAIC	562	8	7	18	529	53
SALEM	54	12	14	3	25	6
SOMERSET	143	15	7	29	92	13
SUSSEX	29	1	6	8	14	17
UNION	171	26	4	17	124	19
WARREN	16	0	10	4	2	3
NJ TOTAL	4,791	1,772	266	341	2,412	384

Data Sources: Derived from NJ Division of Family Development FAMIS Reports #FM 457 and #FM 430-03a.

GRAPH 3

**AFDC Families
Receiving
Emergency Assistance
June 1996, by County**



NEW JERSEY DEPARTMENT OF HUMAN SERVICES
DIVISION OF FAMILY DEVELOPMENT

TABLE 4
FAMILY DEVELOPMENT PROGRAM
STATISTICAL SUMMARY

COUNTY	SNAPSHOT OF ACTIVITY AS OF JUNE 1996				ACTIVITY FOR MONTH OF JUNE 1996						
	TOTAL NONEXMT JOBS/FDP RECI- PIENTS	EMPLOYMENT DIRECTED ACTIVITIES(1)			PARTIC IN EDAs & RECEIVE SUPPORT SERVICES		PARTIC W/ 1st C M INTV	# EMPL THIS MONTH & STILL REC AFDC	# CLSD ON FAMIS RE: EARNINGS (2)	POST AFDC & REC CHILD CARE	
		TRAIN- ING	EDUCA- TION	JOB SEARCH	TRES	CHILD CARE					
ATLANTIC	1,369	318	103	128	267	243	163	83	139	170	
BERGEN	1,773	210	133	38	215	121	52	10	39	74	
BURLINGTON	1,461	288	82	79	331	175	81	46	70	186	
CAMDEN	8,768	668	275	99	606	456	1,622	37	167	243	
CAPE MAY	553	73	6	31	45	21	44	45	62	5	
CUMBERLAND	1,472	328	238	44	549	256	188	90	103	113	
ESSEX	17,492	1,557	787	370	2,066	1,562	390	94	217	158	
GLOUCESTER	1,084	320	60	56	421	107	82	7	31	66	
HUDSON	11,333	1,087	1,029	166	1,644	926	229	63	195	254	
HUNTERDON	83	12	14	6	9	9	7	3	8	3	
MERCER	2,994	321	253	44	276	242	52	33	87	121	
MIDDLESEX	3,358	391	263	207	400	185	192	99	101	145	
MONMOUTH	2,511	361	233	149	442	306	125	62	77	167	
MORRIS	403	199	33	71	70	81	55	29	19	51	
OCEAN	1,828	250	94	85	110	66	148	57	94	123	
PASSAIC	3,930	924	350	78	967	298	221	38	97	131	
SALEM	372	56	70	9	73	76	13	9	20	42	
SOMERSET	531	70	61	20	59	71	17	22	18	40	
SUSSEX	184	52	40	29	24	48	14	13	23	38	
UNION	3,807	483	281	156	551	287	44	15	84	108	
WARREN	389	74	46	42	31	20	9	10	20	11	
STATE	65,695	8,042	4,451	1,907	9,156	5,556	3,748	865	1,671	2,249	

(1) - The number of participants receiving support services may occasionally exceed the number actively participating in EDAs. This can result from extended assessment or evaluation activities, or the issuance of bridge payments.

(2) - FAMIS file date 6/21/96

New Jersey Department of Human Services
Division of Family Development

TABLE 5

AFDC Program State Summary

NUMBER OF APPLICATIONS AND TERMINATIONS DURING REPORT MONTH,
AND NUMBER OF ELIGIBLE FAMILIES RECEIVING AFDC AT END OF REPORT MONTH

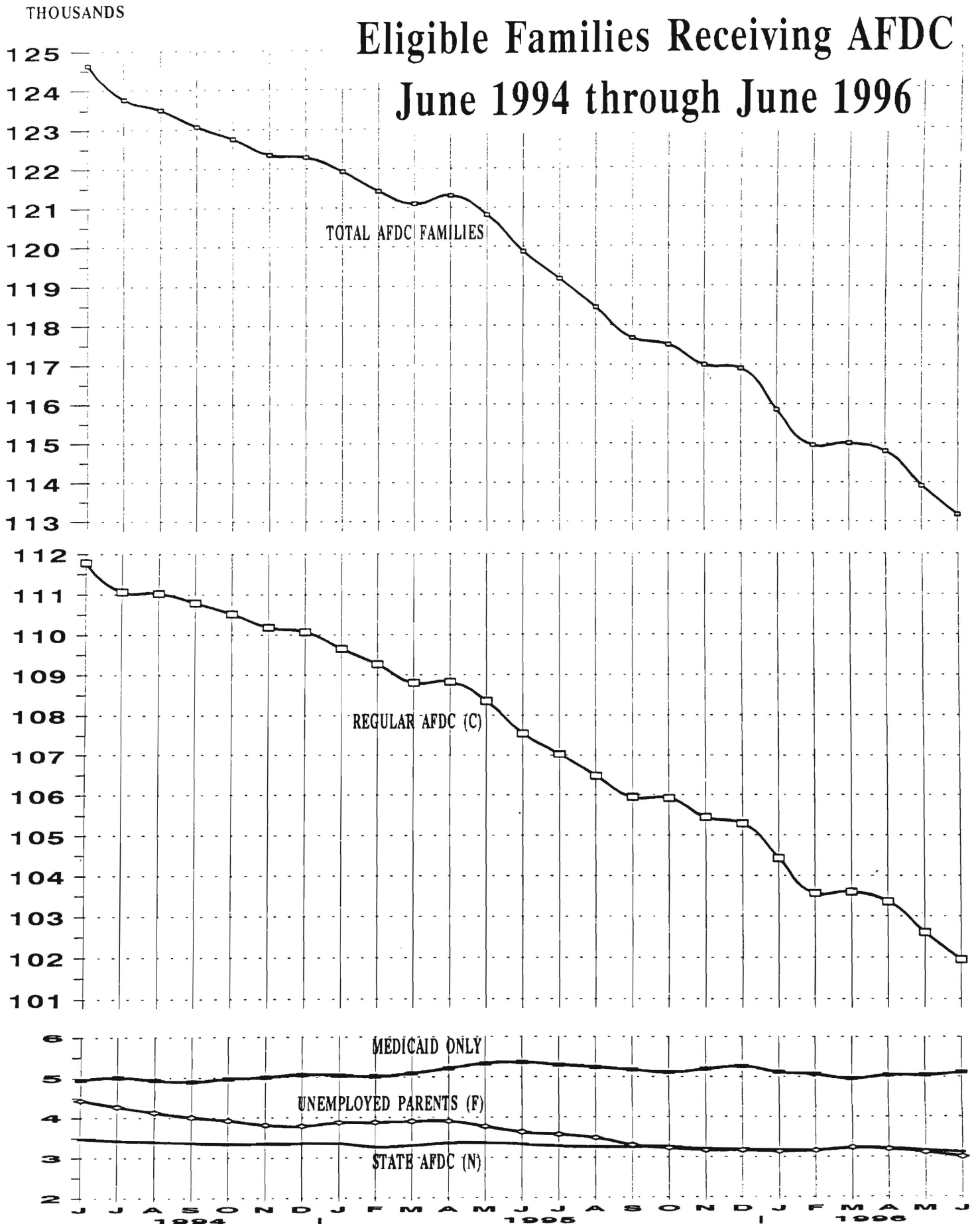
June 1994 through June 1996

	Applications Approved	Termin- ations	Regular AFDC (C Segment)	Unemployed Parents (F)	State AFDC (N)	Medicaid Only	TOTAL AFDC
1994 Jun	5,758	5,742	111,787	4,423	3,477	4,953	124,640
Jul	5,117	5,898	111,064	4,266	3,428	5,007	123,765
Aug	6,435	6,827	111,025	4,128	3,401	4,940	123,494
Sep	6,266	6,754	110,790	4,007	3,369	4,900	123,066
Oct	6,592	6,950	110,517	3,927	3,340	4,966	122,750
Nov	6,344	6,796	110,181	3,814	3,350	5,002	122,347
Dec	5,682	5,890	110,070	3,789	3,360	5,065	122,284
AVERAGE (12 MONTHS)	6,014	6,150	110,901	4,195	3,351	4,928	123,375
1995 Jan	5,583	5,944	109,645	3,875	3,358	5,045	121,923
Feb	5,964	6,515	109,261	3,878	3,270	5,016	121,425
Mar	5,810	6,221	108,800	3,903	3,305	5,088	121,096
Apr	7,096	7,086	108,822	3,907	3,365	5,209	121,303
May	5,288	5,784	108,343	3,773	3,369	5,328	120,813
Jun	5,558	6,458	107,541	3,639	3,336	5,358	119,874
Jul	5,977	6,781	107,028	3,574	3,286	5,293	119,181
Aug	5,547	6,294	106,475	3,489	3,260	5,239	118,463
Sep	5,922	6,647	105,943	3,303	3,260	5,175	117,681
Oct	7,062	7,359	105,917	3,224	3,257	5,110	117,508
Nov	6,083	6,660	105,445	3,164	3,199	5,189	116,997
Dec	5,582	5,775	105,287	3,165	3,189	5,258	116,899
AVERAGE	5,956	6,460	107,376	3,575	3,288	5,192	119,430
1996 Jan	5,332	6,236	104,430	3,139	3,173	5,113	115,855
Feb	5,217	6,283	103,561	3,161	3,170	5,060	114,952
Mar	6,317	6,302	103,598	3,230	3,217	4,956	115,001
Apr	6,896	7,241	103,352	3,192	3,211	5,040	114,795
May	5,335	6,152	102,600	3,112	3,163	5,038	113,913
Jun	5,319	6,121	101,947	2,999	3,117	5,116	113,179
AVERAGE	5,736	6,389	103,248	3,139	3,175	5,054	114,616

Data Sources: Data is derived from NJ Division of Family Development's FAMIS report # FF-012.

GRAPH 4

Eligible Families Receiving AFDC June 1994 through June 1996



New Jersey Department of Human Services
Division of Family Development

TABLE 6

FOOD STAMP Program State Summary

**NUMBER OF ATP'S ISSUED TO HOUSEHOLDS, PERSONS,
ADULTS AND CHILDREN AT THE END OF THE REPORT MONTH**

June 1994 through June 1996

	HOUSEHOLDS			TOTAL	PERSONS			
	AFDC	Other low income	TOTAL		TOTAL	AFDC	Other low income	Adults
1994 Jun	115,737	106,683	222,420	529,514	364,394	165,120	248,099	281,415
Jul	115,172	105,717	220,889	526,075	362,520	163,555	246,142	279,933
Aug	114,809	106,115	220,924	524,659	361,106	163,553	246,052	278,607
Sep	114,177	105,972	220,149	521,945	358,849	163,096	244,835	277,110
Oct	114,039	106,903	220,942	522,406	358,010	164,396	245,676	276,730
Nov	114,251	107,577	221,828	524,090	358,582	165,508	246,659	277,431
Dec	114,232	107,467	221,699	523,825	358,446	165,379	246,517	277,308
AVERAGE (12 MONTHS)	114,789	105,924	220,714	525,325	361,323	164,003	246,043	279,282
1995 Jan	113,691	107,493	221,184	522,125	356,763	165,362	245,837	276,288
Feb	113,830	108,421	222,251	524,344	357,419	166,925	247,107	277,237
Mar	114,339	110,279	224,618	529,456	359,404	170,052	249,994	279,462
Apr	113,588	108,991	222,579	524,102	356,717	167,385	247,367	276,735
May	113,125	109,171	222,296	522,173	355,099	167,074	246,949	275,224
Jun	112,827	109,198	222,025	521,084	354,211	166,873	246,557	274,527
Jul	111,635	107,978	219,613	515,478	350,378	165,100	243,727	271,751
Aug	111,415	109,603	221,018	516,618	349,372	167,246	245,110	271,508
Sep	110,760	109,154	219,914	513,517	347,126	166,391	243,723	269,794
Oct	110,697	110,268	220,965	514,598	346,519	168,079	244,911	269,687
Nov	110,630	110,763	221,393	514,823	346,034	168,789	245,455	269,368
Dec	109,992	110,155	220,147	511,727	343,955	167,772	243,965	267,762
AVERAGE	112,211	109,290	221,500	519,170	351,916	167,254	245,892	273,279
1996 Jan	109,554	111,166	220,720	512,165	342,778	169,387	244,801	267,364
Feb	109,649	112,813	222,462	515,181	343,314	171,867	246,961	268,220
Mar	109,364	113,895	223,259	515,676	342,361	173,315	247,695	267,981
Apr	108,787	114,163	222,950	514,375	340,597	173,778	247,380	266,995
May	108,205	114,458	222,663	513,213	338,891	174,322	246,918	266,295
Jun	106,875	112,888	219,763	506,926	334,762	172,164	243,422	263,504
AVERAGE	108,739	113,231	221,970	512,923	340,451	172,472	246,196	266,727

ATP - Authorization to Participate

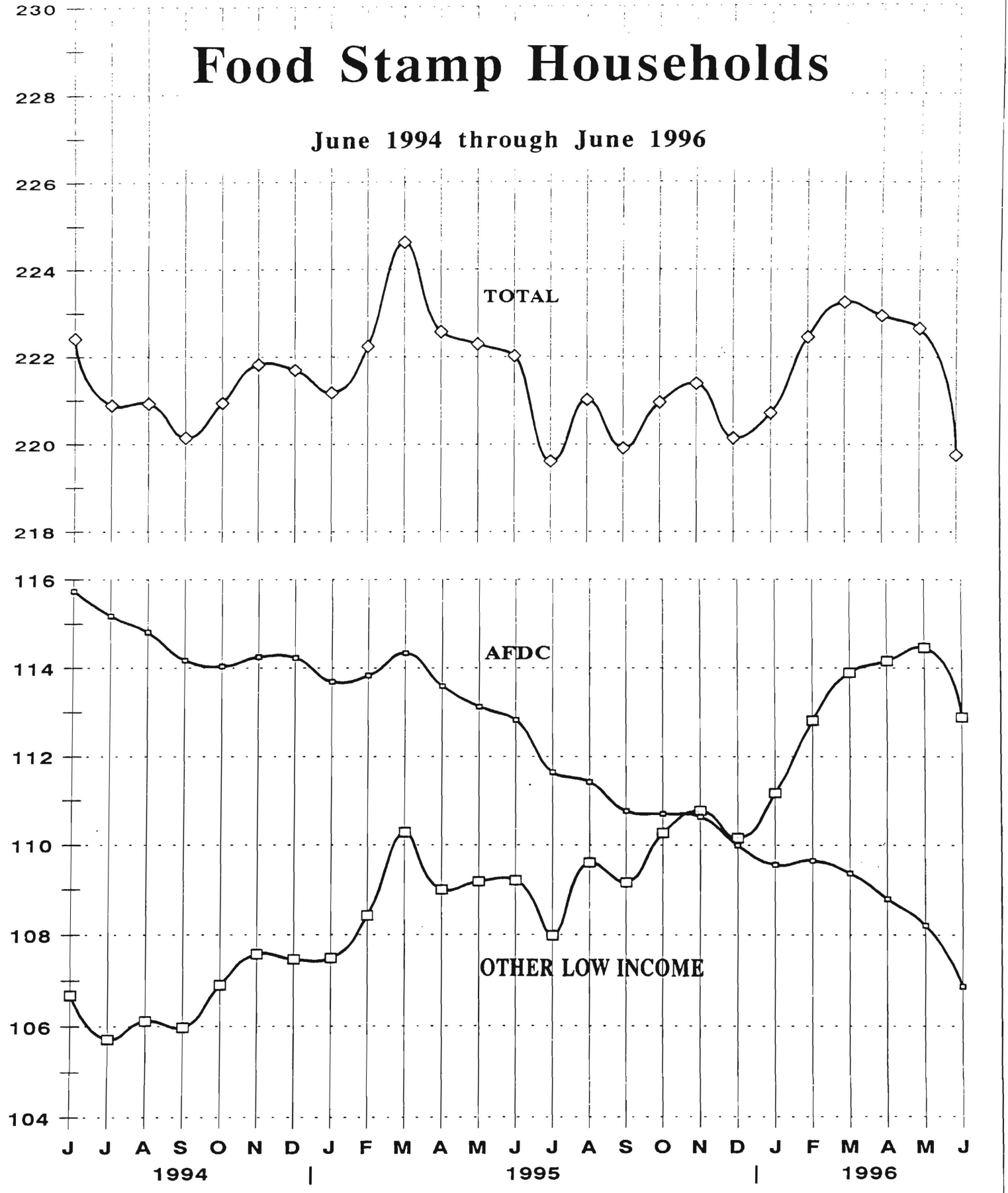
Data Sources: Data is derived from NJ Division of Family Development's FAMIS report # FB-160.

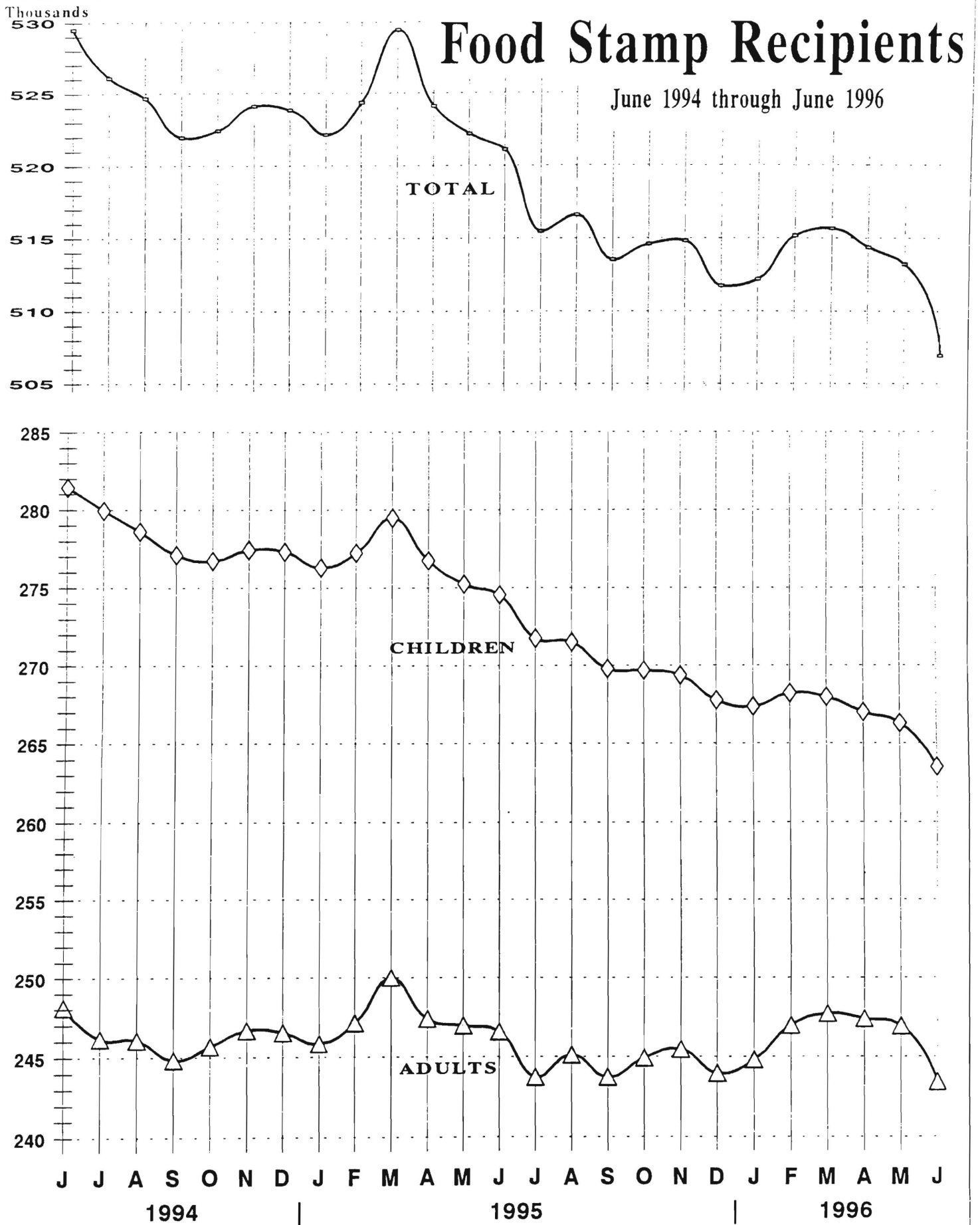
GRAPH 5

Thousands

Food Stamp Households

June 1994 through June 1996





New Jersey Department of Human Services
Division of Family Development

TABLE 7

EMERGENCY ASSISTANCE Program for AFDC Recipients
State Summary

NUMBER OF ELIGIBLE FAMILIES RECEIVING EMERGENCY ASSISTANCE PAYMENTS
(UNDUPLICATED CASES)
JUNE 1994 through JUNE 1996

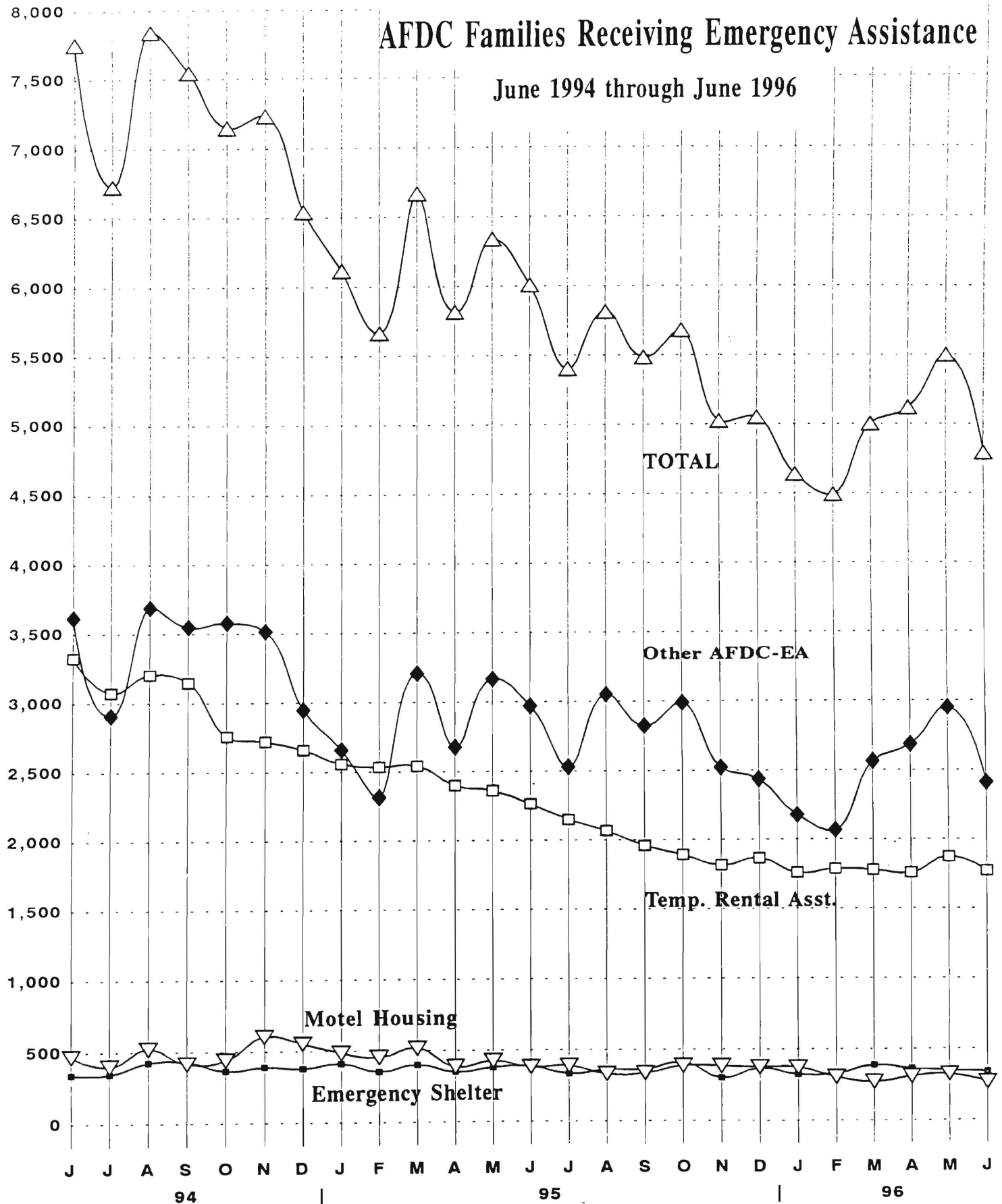
	Total families receiving EA	Temporary rental assist.	Motel Housing	Emergency Shelter	Other AFDC-EA
1994 JUN	7,755	3,326	469	343	3,617
JUL	6,727	3,075	400	344	2,908
AUG	7,840	3,204	520	426	3,690
SEP	7,545	3,147	418	430	3,550
OCT	7,147	2,759	442	366	3,580
NOV	7,231	2,720	604	391	3,516
DEC	6,540	2,658	554	379	2,949
Average (12 mos.)	7,326	3,218	468	379	3,260
1995 JAN	6,115	2,557	487	413	2,658
FEB	5,664	2,535	456	354	2,319
MAR	6,668	2,542	516	402	3,208
APR	5,815	2,402	387	351	2,675
MAY	6,338	2,364	427	381	3,166
JUN	6,007	2,268	382	387	2,970
JUL	5,402	2,149	389	334	2,530
AUG	5,813	2,068	331	362	3,052
SEP	5,482	1,958	336	364	2,824
OCT	5,678	1,891	388	410	2,989
NOV	5,024	1,816	384	302	2,522
DEC	5,048	1,864	377	369	2,438
Average	5,755	2,201	405	369	2,779
1996 JAN	4,639	1,761	374	325	2,179
FEB	4,490	1,788	305	330	2,067
MAR	5,001	1,779	270	388	2,564
APR	5,118	1,760	309	364	2,685
MAY	5,498	1,873	323	350	2,952
JUN	4,791	1,772	266	341	2,412
Average	4,923	1,789	308	350	2,477

Data Sources: Derived from NJ Division of Family Development FAMIS Report #FM457 and #FM430-03a.

GRAPH 7

AFDC Families Receiving Emergency Assistance

June 1994 through June 1996

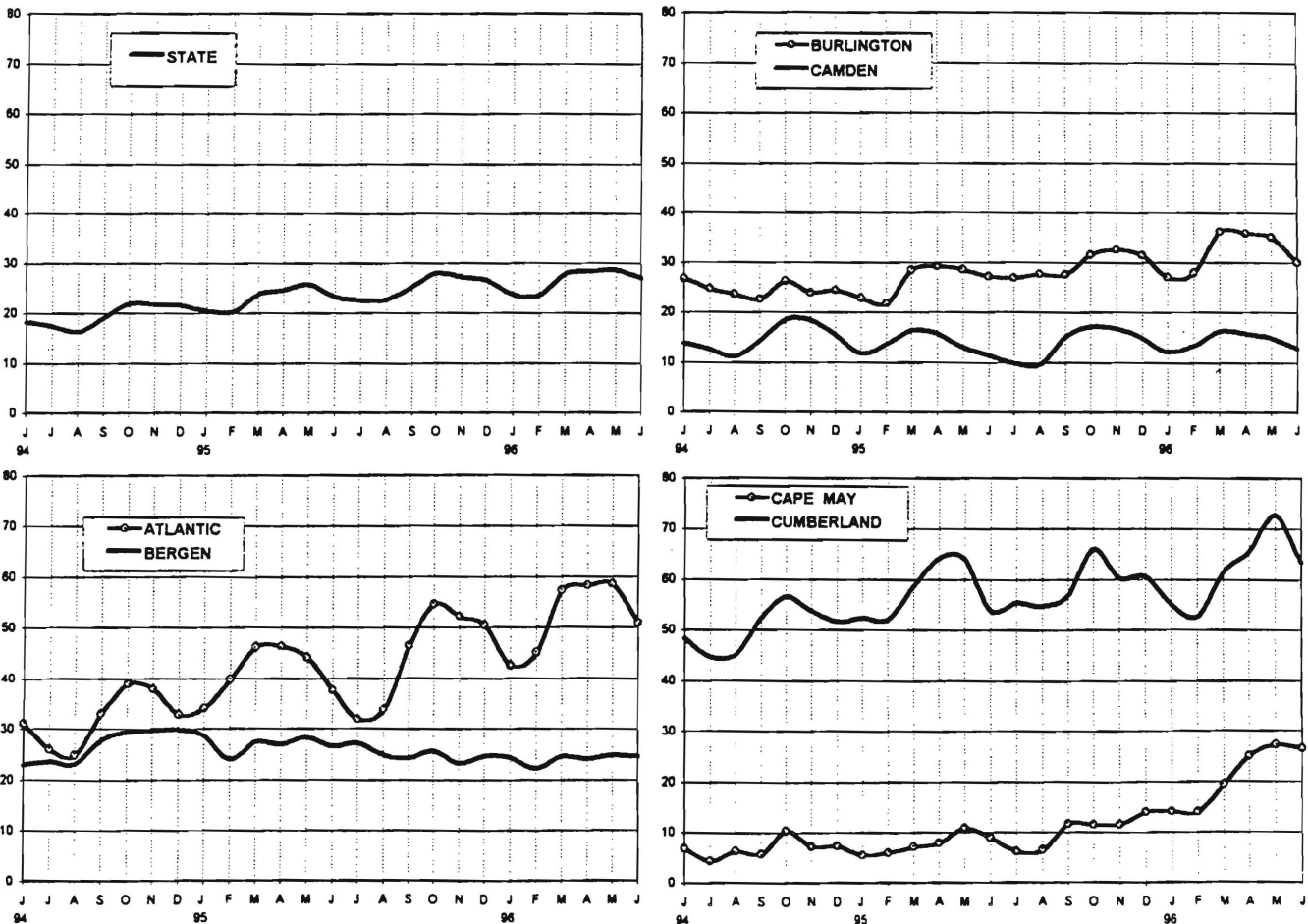


New Jersey Department of Human Services
Division of Family Development

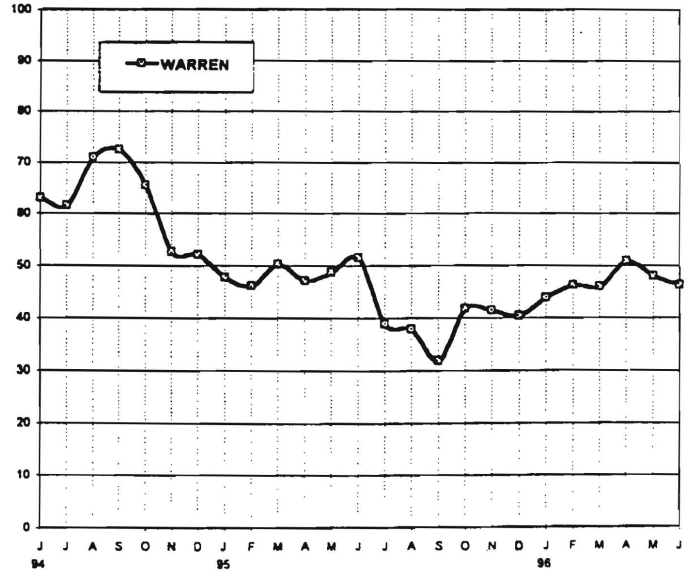
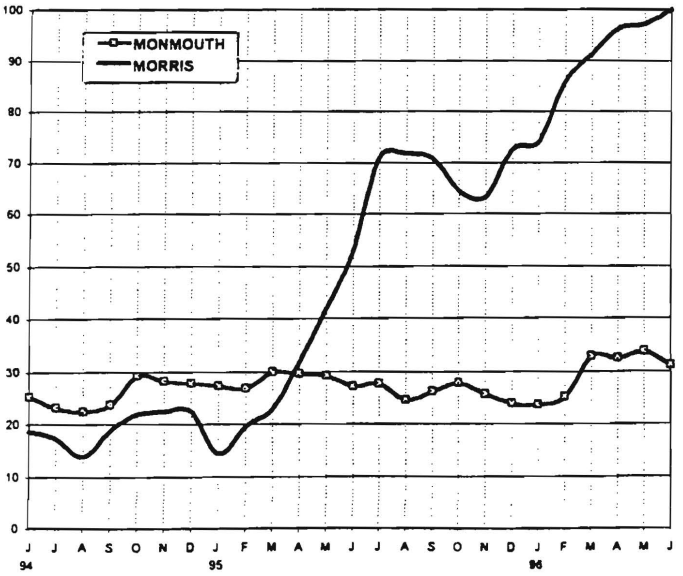
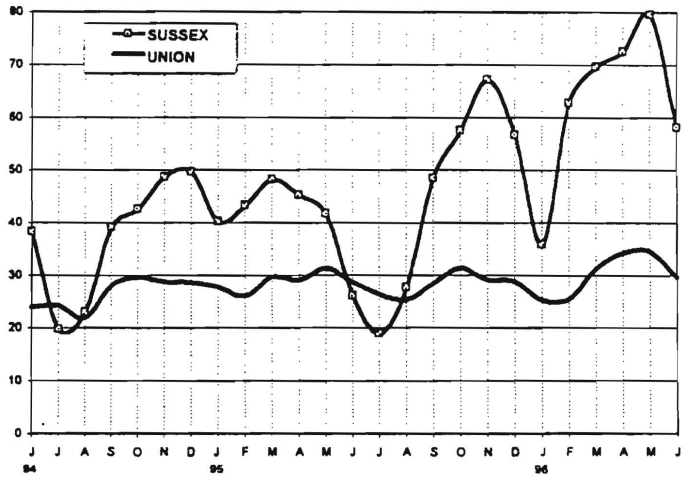
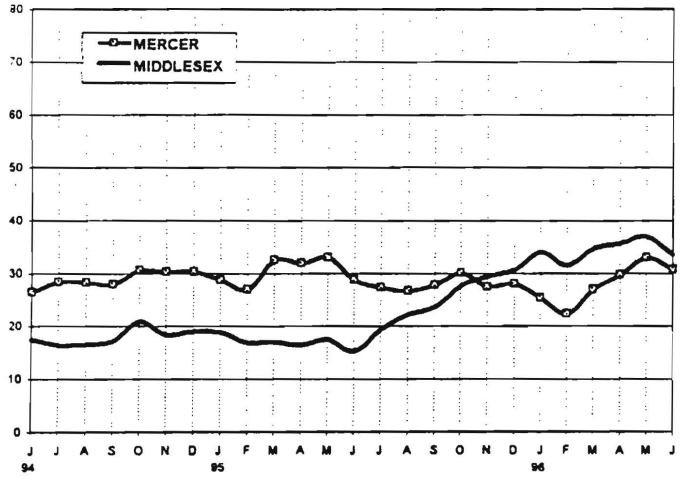
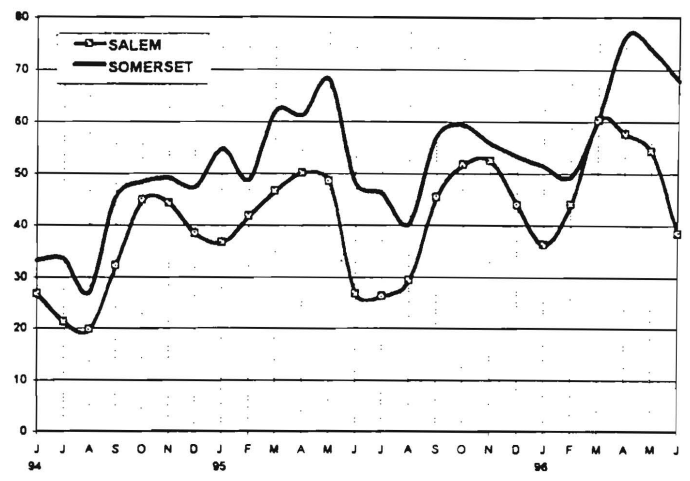
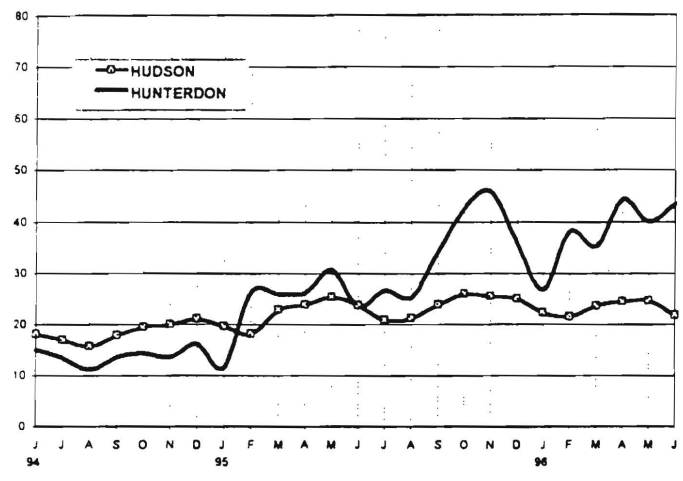
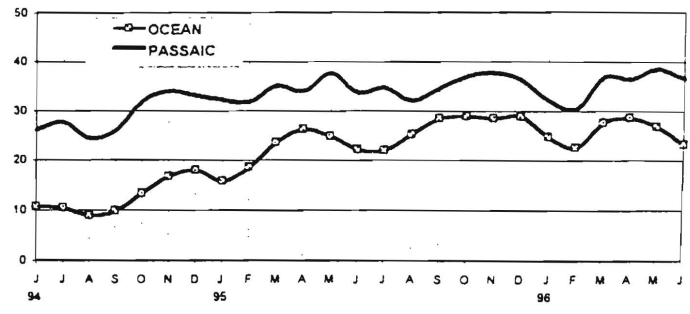
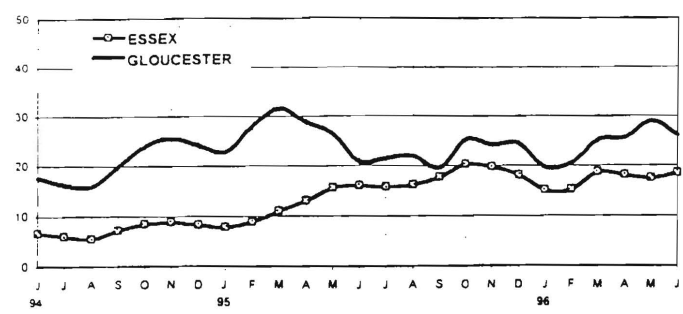
TABLE 8
JOBS/FDP PARTICIPATION RATES BY MONTH
(PERCENT)

	STATE	ATLANTIC	BERGEN	BURLINGTON	CAMDEN	CAPE MAY	CUMBERLAND	ESSEX	GLOUCESTER	HUDSON	HUNTERDON	MERCER	MIDDLESEX	MONMOUTH	MORRIS	OCEAN	PASSAIC	SALEM	SOMERSET	SUSSEX	UNION	WARREN
JUN	18.3	31.0	22.9	26.8	13.8	6.9	48.3	6.7	17.6	18.1	15.0	26.4	17.4	25.2	18.6	10.8	26.1	26.7	33.2	38.3	23.9	63.0
JUL	17.3	26.0	23.5	24.7	12.6	4.4	44.7	6.0	16.2	17.0	13.3	28.4	16.3	23.2	17.3	10.6	27.7	21.2	33.4	19.7	24.2	61.5
AUG	16.3	24.8	23.0	23.7	11.1	6.3	45.1	5.5	15.8	15.7	11.1	28.3	16.5	22.3	13.7	9.0	24.3	19.8	26.9	23.0	21.8	71.0
SEP	19.1	33.0	27.6	22.7	14.3	5.8	52.5	7.2	20.0	17.9	13.4	27.9	17.1	23.7	18.7	9.9	25.9	32.2	45.4	39.2	27.9	72.5
OCT	21.8	39.0	29.3	26.2	18.5	10.4	56.4	8.5	24.0	19.5	14.2	30.5	20.8	29.2	21.7	13.4	31.9	44.8	48.3	42.6	29.5	65.4
NOV	21.8	38.0	29.7	23.9	18.3	7.3	53.7	8.8	25.5	20.0	13.5	30.4	18.2	28.2	22.2	16.7	33.9	44.2	49.1	48.7	28.7	52.6
DEC	21.5	32.8	29.7	24.4	15.5	7.5	51.5	8.3	24.2	21.1	16.1	30.4	18.8	27.8	22.4	18.1	33.0	38.3	47.4	49.6	28.6	52.2
95 JAN	20.4	34.2	28.6	22.9	11.7	5.5	52.2	7.8	22.8	19.6	11.5	28.7	18.8	27.3	14.4	15.8	32.1	36.7	54.7	40.2	27.7	47.7
FEB	20.3	39.8	23.9	21.8	13.6	6.0	52.1	8.8	28.1	18.1	26.2	27.0	16.8	26.8	19.5	18.6	31.7	41.7	48.7	43.3	26.0	46.1
MAR	23.8	46.1	27.3	28.5	16.3	7.2	58.6	11.0	31.6	22.9	25.8	32.5	16.9	29.9	22.9	23.6	35.1	46.6	62.0	48.2	29.6	50.3
APR	24.5	46.3	26.9	29.2	15.7	7.9	64.1	13.0	28.7	23.8	26.1	31.9	16.3	29.6	31.9	26.4	33.9	50.0	61.3	45.3	28.9	47.2
MAY	25.7	44.0	28.3	28.6	12.9	10.9	64.0	15.7	26.4	25.4	30.6	33.1	17.4	29.1	42.0	25.0	37.7	48.4	68.0	41.7	31.4	48.7
JUN	23.3	37.7	26.5	27.1	11.3	9.0	53.8	16.0	20.7	23.8	23.5	28.7	15.1	27.2	52.9	22.3	33.6	26.7	48.1	26.1	28.6	51.5
JUL	22.5	31.9	27.0	26.9	9.8	6.3	55.3	15.8	21.5	20.8	26.6	27.3	19.2	27.7	71.0	22.1	34.7	26.3	46.1	19.0	26.3	38.9
AUG	22.6	33.9	24.8	27.7	9.5	6.5	54.6	16.2	22.0	21.2	25.2	26.7	22.0	24.5	71.7	25.4	32.0	29.4	40.3	27.7	25.2	37.8
SEP	25.2	46.4	24.2	27.6	15.1	11.7	56.9	17.7	19.5	23.8	34.3	27.8	23.6	26.2	70.7	28.6	34.5	45.3	57.3	48.4	28.4	32.0
OCT	27.9	54.6	25.5	31.5	17.1	11.4	65.9	20.2	25.3	26.0	42.7	30.1	27.5	27.8	64.4	28.9	37.0	51.7	59.3	57.5	31.4	41.7
NOV	27.2	52.2	23.1	32.5	16.8	11.5	60.2	19.7	24.1	25.4	45.8	27.4	29.3	25.6	63.3	28.6	37.6	52.4	55.8	67.2	29.0	41.3
DEC	26.4	50.3	24.5	31.5	14.8	13.9	60.6	18.1	24.4	25.0	35.9	28.0	30.6	23.9	72.6	28.9	36.2	43.9	53.2	56.7	28.8	40.3
96 JAN	23.7	42.5	24.3	27.1	12.0	14.1	55.1	15.2	19.7	22.2	26.7	25.3	34.0	23.6	74.1	24.8	32.1	36.3	51.3	35.8	25.2	43.8
FEB	23.5	44.9	22.2	27.9	13.3	13.9	52.6	15.3	20.5	21.5	38.0	22.3	31.5	25.1	85.9	22.6	30.4	43.9	49.4	62.9	25.5	46.3
MAR	27.8	57.3	24.5	36.2	16.2	19.4	61.5	18.7	25.1	23.5	35.2	26.9	34.6	32.8	91.4	27.6	36.8	60.2	60.6	69.6	31.3	45.9
APR	28.3	58.3	24.0	35.9	15.7	25.1	65.6	18.1	25.7	24.4	44.3	29.7	35.5	32.5	96.2	28.6	36.4	57.6	76.4	72.6	34.2	50.9
MAY	28.6	58.6	24.9	35.1	14.8	27.2	72.7	17.4	29.0	24.6	40.0	33.0	38.9	33.7	97.1	26.9	38.5	54.3	73.7	79.7	34.6	48.0
JUN	26.9	50.9	24.6	30.0	12.7	26.4	63.4	18.5	26.0	21.8	43.4	30.7	33.4	31.1	100.0	23.3	36.5	38.4	67.8	58.2	29.7	46.3

GRAPH 8
JOBS/FDP PARTICIPATION RATES (%)



GRAPH 8 (CONTINUED) JOBS/FDP PARTICIPATION RATES (%)



New Jersey Department of Human Services
Division of Family Development

TABLE 9
GENERAL ASSISTANCE Program
State Summary

**NUMBER OF EMPLOYABLE AND UNEMPLOYABLE RECIPIENTS
AND EMERGENCY ASSISTANCE PAYMENTS
DURING REPORT MONTH
February 1994 through February 1996**

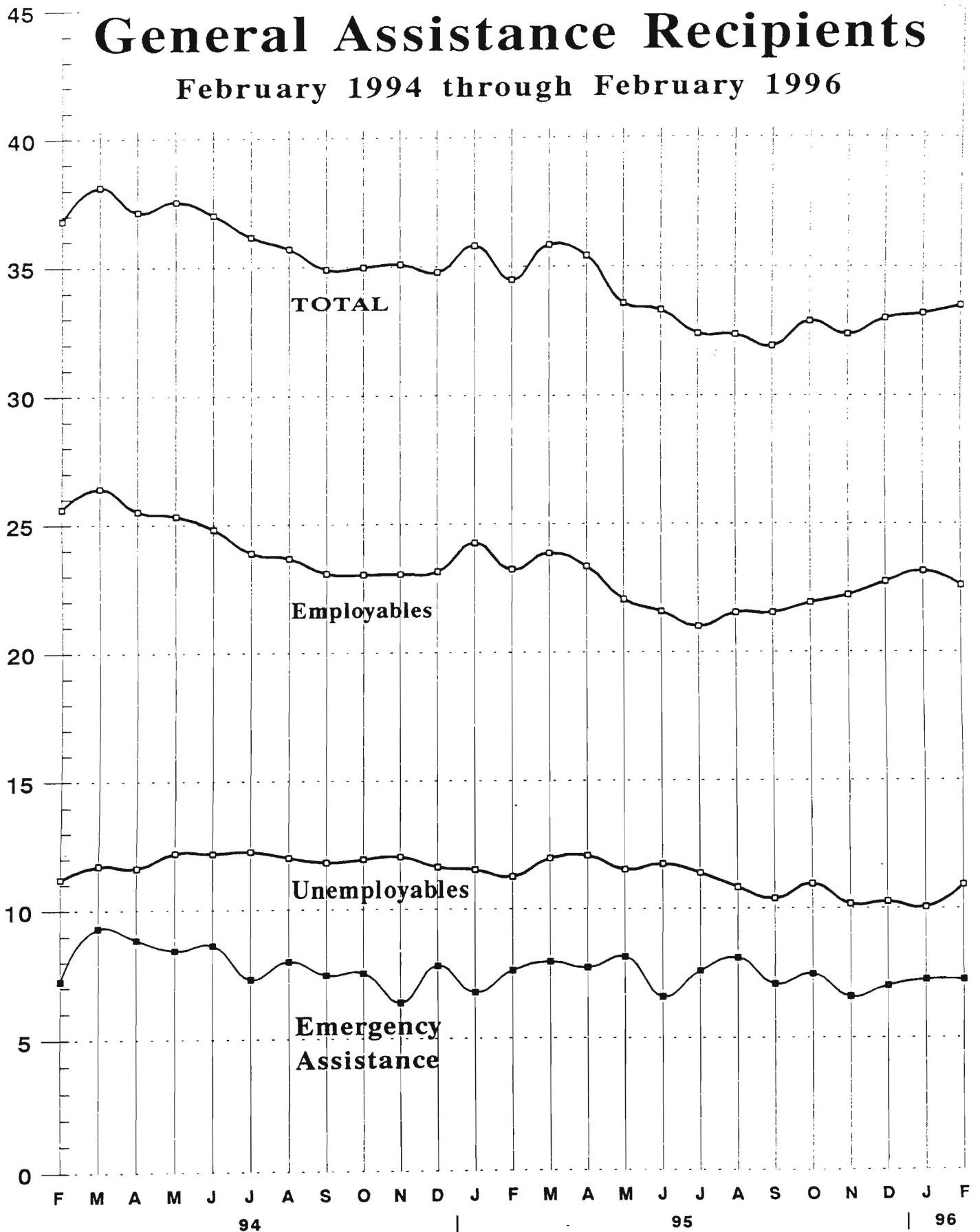
	<u>All Persons Aided</u>			<u>Emergency Assistance Payments</u>		
	<u>Employable</u>	<u>Unemployable</u>	<u>Total</u>	<u>Temporary Rental Assist</u>	<u>Other GA-EA</u>	<u>Total</u>
1994 Feb	25,600	11,202	36,802	4,697	2,537	7,234
Mar	26,397	11,719	38,116	4,951	4,348	9,299
Apr	25,512	11,629	37,141	5,219	3,628	8,847
May	25,327	12,212	37,539	4,828	3,604	8,432
Jun	24,814	12,190	37,004	4,587	4,035	8,622
Jul	23,884	12,261	36,145	4,603	2,685	7,288
Aug	23,671	12,018	35,689	4,489	3,488	7,977
Sep	23,075	11,825	34,900	4,424	3,015	7,439
Oct	23,031	11,950	34,981	4,472	3,032	7,504
Nov	23,046	12,045	35,091	4,607	1,762	6,369
Dec	23,142	11,642	34,784	4,657	3,137	7,794
AVERAGE (12 mos.)	24,374	11,813	36,187	4,651	3,181	7,832
1995 Jan	24,262	11,537	35,799	4,408	2,343	6,751
Feb	23,219	11,264	34,483	4,851	2,748	7,599
Mar	23,855	11,976	35,831	5,036	2,909	7,945
Apr	23,337	12,082	35,419	4,833	2,887	7,720
May	22,046	11,527	33,573	4,995	3,135	8,130
Jun	21,575	11,738	33,313	4,423	2,146	6,569
Jul	21,000	11,391	32,391	4,048	3,526	7,574
Aug	21,526	10,829	32,355	4,174	3,909	8,083
Sep	21,525	10,389	31,914	4,110	2,945	7,055
Oct	21,913	10,959	32,872	3,939	3,497	7,436
Nov	22,206	10,171	32,377	4,141	2,422	6,563
Dec	22,732	10,268	33,000	4,086	2,902	6,988
AVERAGE	22,433	11,178	33,611	4,420	2,947	7,368
1996 Jan	23,140	10,054	33,194	4,421	2,803	7,224
Feb	22,584	10,927	33,511	4,567	2,651	7,218
AVERAGE	22,862	10,491	33,353	4,494	2,727	7,221

Data Sources: NJ Division of Family Development, GA Fiscal Unit

Thousands

General Assistance Recipients

February 1994 through February 1996



New Jersey Department of Human Services
Division of Family Development

TABLE 10

CHILD SUPPORT AND PATERNITY COLLECTIONS

State Summary

\$1000's

COLLECTION SOURCE	State Fiscal Years			Percent Change	
	1994	1995	1996	1994-1995	1995-1996
AFDC & FOSTER CARE					
Federal Tax	\$15,255	\$15,664	\$19,081	2.7%	21.8%
State Tax	1,970	1,762	1,766	-10.6%	0.2%
Unempl. Ins. Ben.	4,975	3,867	5,327	-22.3%	37.8%
Income Withholding	43,219	45,262	42,742	4.7%	-5.6%
Other/Own Behalf	18,138	18,431	15,718	1.6%	-14.7%
From Other States	3,621	3,429	3,345	-5.3%	-2.5%
For Other States	5,269	6,873	7,524	30.5%	9.5%
TOTAL COLLECTION	\$92,447	\$95,289	95,502	3.1%	0.2%
NON-AFDC					
Federal Tax	\$6,547	\$6,822	\$9,237	4.2%	35.4%
State Tax	2,210	2,044	2,220	-7.5%	8.6%
Unempl. Ins. Ben.	15,110	13,338	18,050	-11.7%	35.3%
Income Withholding	214,405	251,694	254,997	17.4%	1.3%
Other/Own Behalf	144,715	156,899	132,531	8.4%	-15.5%
From Other States	19,969	20,835	20,559	4.3%	-1.3%
For Other States	20,015	27,338	28,262	36.6%	3.4%
TOTAL COLLECTION	\$422,970	\$478,969	465,854	13.2%	-2.7%
TOTAL					
Federal Tax	\$21,802	\$22,486	\$28,317	3.1%	25.9%
State Tax	4,179	3,806	3,986	-8.9%	4.7%
Unempl. Ins. Ben.	20,085	17,205	23,377	-14.3%	35.9%
Income Withholding	257,624	296,957	297,739	15.3%	0.3%
Other/Own Behalf	162,853	175,329	148,249	7.7%	-15.4%
From Other States	23,590	24,264	23,904	2.9%	-1.5%
For Other States	25,284	34,211	35,785	35.3%	4.6%
TOTAL COLLECTION	\$515,417	\$574,258	561,356	11.4%	-2.2%

Collection Source: Reflects Collections Recorded by County Probation Departments

Explanatory Notes

The Department of Human Services Division of Family Development provides basic income and an opportunity to achieve self-sufficiency for individuals and families served by the Division's programs. The Division provides leadership, direction and supervision to those public agencies responsible for administering those programs and plans for and develops policies to promote self-sufficiency.

AID TO FAMILIES WITH DEPENDENT CHILDREN (AFDC) - Financial assistance for dependent children and their natural or adoptive parents, or certain other relatives recognized as taking the place of a parent.

Regular AFDC (C Segment) - assistance when only one parent is in the home due to death or absence, or both parents are in the home but at least one is incapacitated.

Unemployed Parents (F Segment) - assistance when both parents are in the home, neither is incapacitated and the primary wage earner meets the federally defined criteria for unemployment.

State AFDC (N Segment) - assistance when both parents are in the home, neither is incapacitated, and the primary wage earner does not meet the federal definition of unemployment.

Medicaid Only - families no longer receiving AFDC financial assistance but remaining eligible for Medicaid under applicable provisions which extend coverage beyond period of AFDC assistance.

FOOD STAMP PROGRAM (FS) - Authorized by Congress as a nutritional supplement program to provide low income households with more food of greater variety and better nutrition. Program eligibility is based on household income, resources, and expenses for medical, shelter, and dependent care. CWA staff refer certain recipients to the New Jersey Department of Labor for participation in the Food Stamp Employment and Training Program.

EMERGENCY ASSISTANCE (EA) - Payments to those eligible for AFDC, Supplemental Security Income or General Assistance, authorized during the 30 consecutive days immediately following the emergency (defined as a substantial loss of shelter, food, clothing, or household furnishings by fire, flood or other similar disaster) or if the eligible individual or family is in an imminent or actual state of homelessness.

JOBS/FDP

JOB OPPORTUNITY AND BASIC SKILLS PROGRAM (JOBS) - Federally mandated work/training program for recipients of AFDC established by the Family Support Act of 1988 under Part F of Title IV of the Social Security Act.

FAMILY DEVELOPMENT PROGRAM (FDP) - Reform legislation enacted by the State Legislature in January 1992 to: build, strengthen, and support the family unit; encourage family formation; reduce the long-term aspects of welfare dependency; look to the needs of the family unit as a whole; emphasize education and training for all family members; maximize use of educational, training and employment resources; and develop genuine private sector job opportunities.

SNAPSHOT OF ACTIVITY AT POINT IN TIME - Status of activities as of the end of the month:

Total Non-Exempt JOBS/FDP Recipients - Calculation of the number of mandatory IV-F individuals (FAMIS report # FB304).

Employment Directed Activities (EDA) - From Activities Summary Report (OMEGA report # RM064). Unduplicated count of persons participating in **Training, Education, or Job Search**.

Participants in EDA, Receiving Support Services - From Issuance Disbursement Summary (OMEGA report # RM703). Total number of active participants who show receipt of **Training Related Expenses** or **Child Care**.

Participation Rate (JOBS/FDP) - Federally mandated calculation method, dividing the number of participants whose combined and averaged weekly hours of participation in qualifying activities equals or exceeds 20 hours per week by the total number of non-exempt IV-F recipients. As of the end of the month.

ACTIVITY FOR THE MONTH - Number of participants with the indicated activity during the month:

Participants with First Case Management Interview - From Activities Summary Report (OMEGA report # RM064).

Number of Persons Employed This Month, Still Receiving AFDC - From Activities Summary Report (OMEGA report # RM064).

Number of Persons Closed on FAMIS Due to Earnings - From FAMIS report # FM463.

Post AFDC and Receiving Child Care - Persons no longer in receipt of AFDC, but still receiving child care. From Issuance Disbursement Summary (OMEGA report # RM703).

Division of Family Development

TABLE 11
GENERAL ASSISTANCE PROGRAM
 EMPLOYABLE AND UNEMPLOYABLE RECIPIENTS
 AND EMERGENCY ASSISTANCE PAYMENTS,
 COUNTIES AND 21 LARGEST MUNICIPALITIES
 February 1996

County/ Municipality	Total Persons Aided			Emergency Assistance Payments		
	Employable	Unemployable	Total	Temporary Rental Assist.	Other GA-EA	Total
ATLANTIC	1,245	499	1,744	81	41	122
BERGEN	565	438	1,003	242	73	315
BURLINGTON	556	374	930	185	146	331
CAMDEN	1,886	1,017	2,903	375	216	591
CAPE MAY	166	71	237	25	17	42
CUMBERLAND	419	216	635	6	17	23
ESSEX	7,466	2,612	10,078	795	1,137	1,932
GLOUCESTER	137	170	307	24	5	29
HUDSON	1,146	1,155	2,301	207	34	241
HUNTERDON	52	57	109	24	24	48
MERCER	1,874	817	2,691	327	282	609
MIDDLESEX	549	503	1,052	116	29	145
MONMOUTH	813	720	1,533	362	89	451
MORRIS	151	204	355	42	33	75
OCEAN	754	385	1,139	428	186	614
PASSAIC	2,530	604	3,134	430	176	606
SALEM	135	66	201	22	21	43
SOMERSET	92	92	184	39	10	49
SUSSEX	38	28	66	27	4	31
UNION	1,940	841	2,781	780	109	889
WARREN	70	58	128	30	2	32
TOTAL NJ	22,584	10,927	33,511	4,567	2,651	7,218

Atlantic City	1,003	310	1,313	69	33	102
Mount Holly Twp	163	78	241	53	78	131
Camden City	1,496	647	2,143	247	143	390
Vineland City	231	134	365	4	14	18
East Orange City	579	453	1,032	277	58	335
Irvington Town	280	72	352	33	4	37
Montclair Town	184	87	271	43	17	60
Newark City	5,878	1,785	7,663	420	977	1,397
Orange City	424	62	486	0	70	70
Bayonne City	123	53	176	7	0	7
Hoboken City	138	118	256	28	1	29
Jersey City	669	483	1,152	100	18	118
Trenton City	1,732	712	2,444	308	249	557
Perth Amboy City	134	113	247	16	3	19
Asbury Park City	218	107	325	95	0	95
Long Branch City	216	110	326	79	36	115
Lakewood Twp	322	118	440	221	35	256
Passaic City	759	227	986	228	47	275
Paterson City	1,627	256	1,883	133	107	240
Elizabeth City	1,259	472	1,731	608	44	652
Plainfield City	280	123	403	36	0	36
Total	17,715	6,520	24,235	3,005	1,934	4,939

Source: NJ Division of Family Development, GA Fiscal Unit

New Jersey Department of Human Services
Division of Family Development

TABLE 12
CHILD SUPPORT AND PATERNITY

NUMBER OF CASES REMAINING OPEN, QUARTER ENDING JUNE 1996

	CASES WITH ORDERS			OTHER CASES (1)		TOTAL AFDC AND FOSTER CARE	TOTAL NON- AFDC	TOTAL ALL CASES
	AFDC AND FOSTER CARE	AFDC AND FOSTER CARE ARREARS (2)	NON- AFDC	AFDC AND FOSTER CARE	NON- AFDC			
Atlantic	2,665	4,097	9,864	3,734	4,682	10,496	14,546	25,042
Bergen	1,579	1,745	8,437	1,558	1,252	4,882	9,689	14,571
Burlington	1,986	2,758	10,081	2,240	2,603	6,984	12,684	19,668
Camden	9,635	9,730	21,740	9,738	7,459	29,103	29,199	58,302
Cape May	772	955	2,991	625	558	2,352	3,549	5,901
Cumberland	3,879	4,449	10,161	737	501	9,065	10,662	19,727
Essex	16,604	15,859	36,420	25,543	16,411	58,006	52,831	110,837
Gloucester	1,801	2,118	6,119	1,292	1,279	5,211	7,398	12,609
Hudson	7,987	7,334	19,073	12,015	8,351	27,336	27,424	54,760
Hunterdon	151	254	1,628	119	112	524	1,740	2,264
Mercer	4,381	5,101	12,319	4,175	3,725	13,657	16,044	29,701
Middlesex	3,197	4,419	14,385	4,018	3,439	11,634	17,824	29,458
Monmouth	3,580	4,555	12,688	2,403	2,513	10,538	15,201	25,739
Morris	448	448	3,574	771	764	1,667	4,338	6,005
Ocean	1,939	2,759	9,280	2,342	2,833	7,040	12,113	19,153
Passaic	5,420	5,527	15,430	6,109	5,336	17,056	20,766	37,822
Salem	1,068	1,380	3,294	384	341	2,832	3,635	6,467
Somerset	524	577	3,119	691	870	1,792	3,989	5,781
Sussex	310	523	2,234	264	251	1,097	2,485	3,582
Union	3,744	4,126	12,301	5,188	3,921	13,058	16,222	29,280
Warren	611	944	2,820	194	186	1,749	3,006	4,755
NJ TOTAL	72,281	79,658	217,958	84,140	67,387	236,079	285,345	521,424

Data Sources: Automated Child Support Enforcement System Report # CS199-3

- (1) - Needing location, paternity or other services to establish an obligation
(2) - Cases with arrears *only*