

November 2022 Traffic Report

AVIATION DEPARTMENT (Data As Of 12/27/2022 8:52:39 PM)

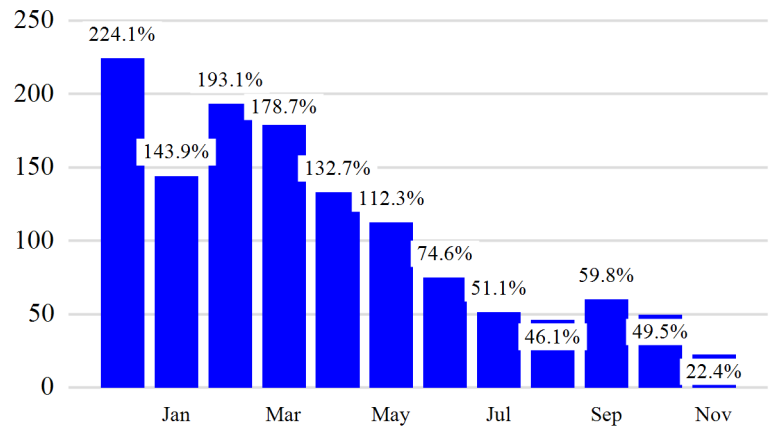
REGION



Revenue Passengers

| | Curr Month | % Change |
|---------------------|------------|--------------------------|
| | 11,141,573 | 22.4% ▲ |
| Domestic | 7,890,060 | 13.8% |
| International | 3,251,513 | 49.6% |
| Non-Revenue | 301,287 | 19.6% |
| Load Factors | | |
| | Curr Month | |
| Domestic | 82.2% | 80.9% Avg Load Factor |
| International | 78.0% | |

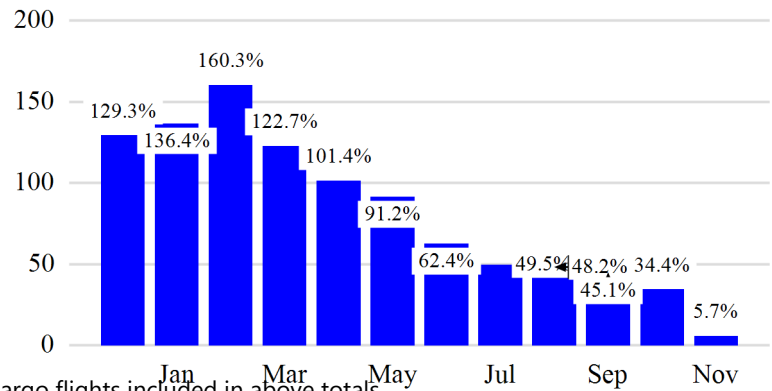
Year over Year % Change in Revenue Passengers - 12 Months



Total Flights

| | Curr Month | % Change |
|----------------|------------|----------|
| | 102,192 | 5.9% ▲ |
| Excl GA | 99,295 | 5.7% ▲ |
| Domestic | 78,188 | 2.7% |
| International | 21,107 | 18.8% |
| Gen Aviation | 2,897 | 9.7% |
| Cargo Flights* | 3,369 | -16.7% |

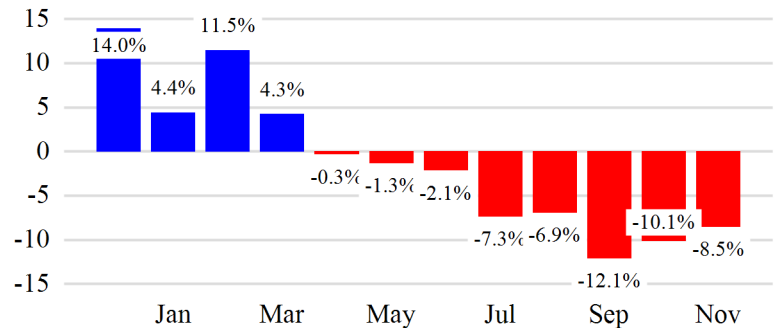
Year over Year % Change in Total Flights (Excl GA) - 12 Months



Cargo (Short Tons)

| | Curr Month | % Change |
|---------------|------------|----------|
| | 189,994 | -8.5% ▼ |
| Domestic | 84,575 | -7.7% |
| International | 105,419 | -9.1% |
| Mail | 11,472 | -6.0% |

Year over Year % Change in Cargo - 12 Months



Top 5 Declines in Revenue Passengers by Airline

| Airline | Pax Decline | % Decline |
|---------------------|-------------|-----------|
| FRONTIER AIRLINES | (66,475) | -65.0% |
| EASTERN | (4,374) | -97.0% |
| COPA AIRLINES | (4,036) | -13.0% |
| SUN COUNTRY | (1,958) | -21.0% |
| Avianca El Salvador | (1,618) | -11.0% |

Top 5 Increases in Revenue Passengers by Airline

| Airline | Pax Increase | % Increase |
|-----------------|--------------|------------|
| DELTA | 535,959 | 27.0% |
| JETBLUE AIRWAYS | 382,240 | 25.0% |
| UNITED | 223,628 | 9.0% |
| SPIRIT AIRLINES | 106,954 | 38.0% |
| AMERICAN | 98,041 | 7.0% |

Airport Summary Statistics

JFK Summary

| | Current Month | YoY % |
|----------------------------|---------------|-------|
| Total Revenue Pax | 4,699,547 | 34.0 |
| Total Flights Including GA | 36,769 | 13.0 |
| Total Cargo (Short Tons) | 123,554 | -6.2 |

EWR Summary

| | Current Month | YoY % |
|----------------------------|---------------|-------|
| Total Revenue Pax | 3,769,507 | 11.0 |
| Total Flights Including GA | 33,302 | -2.0 |
| Total Cargo (Short Tons) | 63,746 | -13.3 |

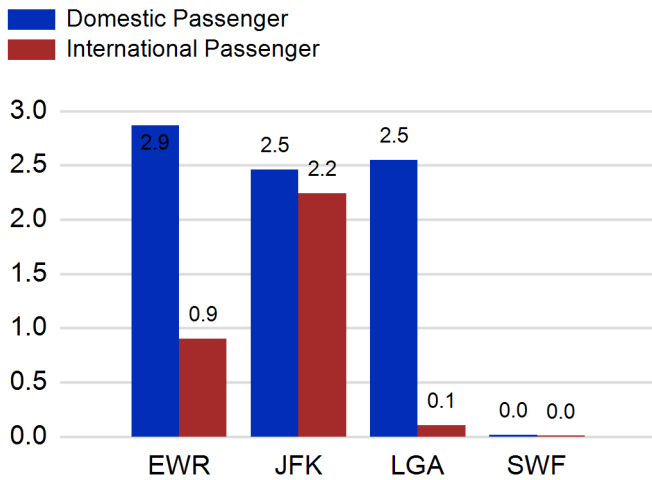
LGA Summary

| | Current Month | YoY % |
|----------------------------|---------------|-------|
| Total Revenue Pax | 2,649,973 | 19.0 |
| Total Flights Including GA | 30,080 | 6.0 |
| Total Cargo (Short Tons) | 590 | 10.8 |

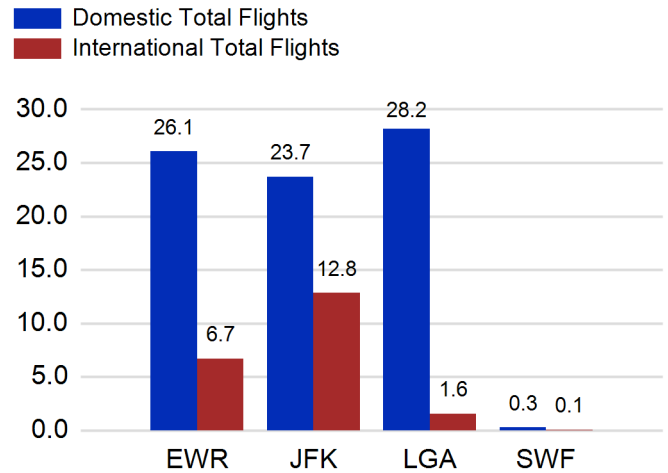
SWF Summary

| | Current Month | YoY % |
|----------------------------|---------------|-------|
| Total Revenue Pax | 22,546 | 23.0 |
| Total Flights Including GA | 2,041 | 17.0 |
| Total Cargo (Short Tons) | 2,104 | 16.1 |

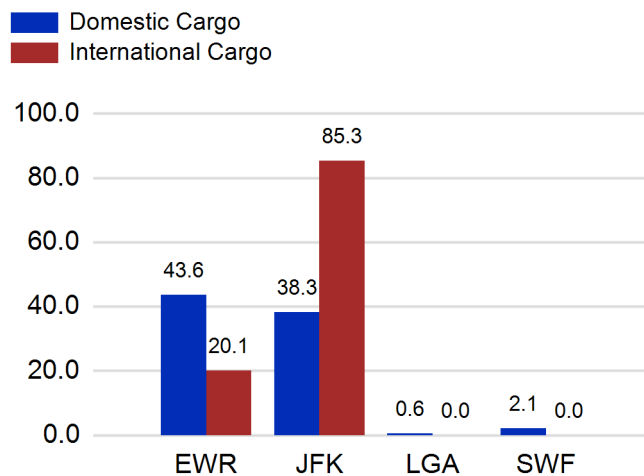
Total Passengers by Airport (Millions)



Total Flights by Airport (Thousands)



Total Cargo by Airport (Thousands of Short Tons)



12 Months Ending Passenger & Freight Statistics

Top 20 Airlines Ranking by Passengers & Freight: 12 Months Ending Nov 2022

| Airline Name | Domestic | International | Total Pax | % of Tot | Airline Name | Short Tons | % of Tot |
|------------------------|------------|---------------|------------|----------|--------------------------------|------------|----------|
| United | 23,955,563 | 7,027,540 | 30,983,103 | 24.54% | FEDERAL EXPRESS | 410,574 | 17.59% |
| DELTA | 23,749,270 | 4,606,757 | 28,356,027 | 22.46% | UNITED PARCEL | 210,205 | 9.01% |
| JETBLUE AIRWAYS | 15,341,849 | 5,650,302 | 20,992,151 | 16.63% | United | 198,830 | 8.52% |
| AMERICAN | 14,386,789 | 3,146,598 | 17,533,387 | 13.89% | DELTA | 99,827 | 4.28% |
| SPIRIT AIRLINES | 3,986,246 | 0 | 3,986,246 | 3.16% | AMERICAN | 98,429 | 4.22% |
| SOUTHWEST AIRLINES | 2,879,726 | 0 | 2,879,726 | 2.28% | KALITTA AIR LLC | 85,660 | 3.67% |
| ALASKA AIRLINES | 2,307,479 | 0 | 2,307,479 | 1.83% | ABX AIR INC | 68,575 | 2.94% |
| BRITISH AIRWAYS | 0 | 1,164,312 | 1,164,312 | 0.92% | ATLAS AIR | 64,724 | 2.77% |
| AIR CANADA | 0 | 1,116,527 | 1,116,527 | 0.88% | CARGOLUX AIRLINES | 58,573 | 2.51% |
| AIR FRANCE | 0 | 1,025,339 | 1,025,339 | 0.81% | KOREAN | 56,547 | 2.42% |
| EMIRATES AIRLINES | 0 | 971,303 | 971,303 | 0.77% | AIR TRANSPORT INT'L.(BAX Inc.) | 51,219 | 2.19% |
| VIRGIN ATLANTIC | 0 | 786,818 | 786,818 | 0.62% | CHINA AIRLINES (CAL) | 46,936 | 2.01% |
| LUFTHANSA | 0 | 768,373 | 768,373 | 0.61% | BRITISH AIRWAYS | 43,049 | 1.84% |
| TURKISH AIR | 0 | 721,172 | 721,172 | 0.57% | TURKISH AIR | 42,932 | 1.84% |
| Avianca Cargo | 0 | 650,704 | 650,704 | 0.52% | EVA | 37,474 | 1.61% |
| AER LINGUS | 0 | 604,040 | 604,040 | 0.48% | VIRGIN ATLANTIC | 36,834 | 1.58% |
| FRONTIER AIRLINES | 586,129 | 13,371 | 599,500 | 0.47% | LUFTHANSA CARGO | 33,345 | 1.43% |
| EL AL | 0 | 487,263 | 487,263 | 0.39% | AIR FRANCE | 31,676 | 1.36% |
| TAM BRAZILIAN AIRLINES | 0 | 476,719 | 476,719 | 0.38% | CATHAY PACIFIC | 27,872 | 1.19% |
| QATAR AIRWAYS | 0 | 453,629 | 453,629 | 0.36% | EUROPEAN AIR TRANSPORT | 27,444 | 1.18% |

Passengers & Freight by Market - 12 Months Ending

| Market | Passengers | Freight (Short Tons) |
|---------------------------|------------|----------------------|
| TRANSATLANTIC | 21,481,710 | 918,354 |
| CANADA | 2,327,043 | 264 |
| CARIBBEAN + BERMUDA | 7,492,575 | 13,759 |
| CENTRAL AND SOUTH AMERICA | 3,903,853 | 63,373 |
| DOMESTIC | 85,479,987 | 992,253 |
| MEXICO | 2,195,553 | 13,485 |
| TRANSPACIFIC | 1,091,491 | 324,155 |
| PUERTO RICO | 2,272,606 | 8,615 |

Additional Data

Airline Schedules (ADI): Non-Stop Destinations

| | Region | Flights (Daily) | Cities |
|---------------|-------------------------|-----------------|---------------|
| Domestic | Domestic | 2477.5 | 107 |
| | Puerto Rico | 36.2 | 3 |
| | Total | 2,513.7 | 110.00 |
| International | Canada | 153.0 | 7 |
| | Caribbean & Bermuda | 131.5 | 25 |
| | Central & South America | 62.5 | 18 |
| | Mexico | 45.6 | 6 |
| | Trans-Atlantic | 286.1 | 51 |
| | Trans-Pacific | 25.0 | 10 |
| | Total | 703.7 | 117.00 |
| Total | 3,217.4 | 227.00 | |

Airline Schedules (ADI): Carriers & Aircraft Type

| | Aircraft Type | Flights (Daily) | Carriers |
|---------------|------------------|-----------------|----------------|
| Domestic | Commuter | 924.1 | 4 |
| | General Aviation | 2.0 | 1 |
| | Narrow Body | 1530.3 | 10 |
| | Unknown | 2.0 | 1 |
| International | Wide Body | 55.3 | 4 |
| | Total | 2,513.7 | 20.00 |
| | Commuter | 136.5 | 5 |
| | Narrow Body | 266.6 | 23 |
| | Wide Body | 300.5 | 55 |
| | Total | 703.7 | 83.00 |
| | Total | Total | 3,217.4 |

Passenger Demographics (ACI ASQ Surveys - 2021)

| Connect | | Trip Type | | Gender | |
|--------------------------|-------|----------------|-------|---------------|-------|
| Local Origin/Destination | 78.6% | Business | 14.0% | M | 49.6% |
| Connecting | 21.4% | Leisure | 86.0% | F | 50.4% |
| Transport Mode | | Annual Flights | | Residency | |
| Bus/Shuttle | 4.7% | 1-2 | 61.5% | United States | 81.0% |
| Other | 18.7% | 3-5 | 24.9% | Other | 19.0% |
| Private/Company Car | 37.5% | 6-10 | 9.0% | | |
| Rail/Subway | 7.3% | 11-20 | 2.8% | | |
| Rental Car | 4.6% | 21+ | 1.8% | | |
| Taxi/Limo | 27.2% | | | | |

Ground Transportation

| | Curr Month | % Change | | Curr Month | % Change |
|---------------------------------|------------|----------|---------------------------------------|------------|----------|
| <i>Paid Parked Cars</i> | 336,856 | -6.4 | <i>Total Air Train Passengers</i> | 2,252,469 | 21.3 |
| <i>GTC Bookings</i> | 0 | | <i>Paid Howard Beach Passengers</i> | 139,200 | 43.0 |
| <i>Airport Coach Passengers</i> | 33,747 | 58.3 | <i>Paid Jamaica Passengers</i> | 453,028 | 42.4 |
| <i>Taxis Dispatched</i> | 378,072 | 22.9 | <i>Paid EWR Passengers</i> | 218,355 | 18.5 |
| | | | <i>On-Airport (Unpaid) Passengers</i> | 1,441,886 | 14.7 |

Airlines for American Carriers (USA)

| | Curr Month | % Change |
|--|------------|----------|
| <i>Freight:revenue ton miles (000)</i> | 0 | |

Regional Airports: Other

| | Curr Month | % Change |
|-----------------------------|------------|----------|
| <i>TEB flight movements</i> | 13,812 | -7.5 |
| <i>ISP Total passengers</i> | 0 | -100.0 |
| <i>HPN Total passengers</i> | 165,893 | 45.7 |