

December 2008



New Jersey

# ECONOMIC INDICATORS

**Jon S. Corzine**  
Governor

NEW JERSEY DEPARTMENT OF

**LWD**

LABOR AND WORKFORCE DEVELOPMENT  
[nj.gov/labor](http://nj.gov/labor)

**David J. Socolow**  
Commissioner

## **IMPORTANT NOTICE**

**The New Jersey Department of Labor and Workforce Development will discontinue distributing paper copies of Economic Indicators through the mail beginning with the January 2009 issue. This publication will continue to be available as an on-line only publication on the Department's Web site, [www.nj.gov/labor](http://www.nj.gov/labor). This change will help reduce printing, mailing and distribution costs to the Department while providing data to users in a more timely manner.**

**To help make the transition to electronic publishing easier for our customers, an automatic e-mail update service is now available. Customers who sign up for this service will be e-mailed a PDF version of Economic Indicators shortly after the publication is posted online. To sign up for this service, please e-mail our publications unit at [NJSDC@dol.state.nj.us](mailto:NJSDC@dol.state.nj.us). Please place the letters "EI" in the subject line of the e-mail.**

**The monthly edition of Economic Indicators will be available via RSS feed on the Department's Web site, [www.nj.gov/labor](http://www.nj.gov/labor). RSS or Really Simple Syndication offers Web site visitors the opportunity to select specific information they want delivered to their desktops. For more information please visit our site and click on the RSS feed icon.**

# NEW JERSEY ECONOMIC INDICATORS

No. 509 Based on data through December 26, 2008

## The Economy

New Jersey's Economy by the Numbers .....	1
The Economic Situation .....	2
Comparison of Economic Trends in New Jersey and the US .....	6

## Labor Area Focus

Regional Analysts' Corner .....	9
Nonfarm Payroll Employment in New Jersey Labor Areas .....	10
Civilian Labor Force Data for New Jersey Labor Areas .....	11

## Statistical Section

Indicator Series, 1 to 30, Historical Tables and Charts .....	S-2 — S-21
Indicator Series, 1 to 30, Annual Averages .....	S-22
Nonfarm Payroll Employment in New Jersey (seasonally adjusted) .....	S-23
Nonfarm Payroll Employment in New Jersey (not seasonally adjusted) .....	S-24
Hours and Earnings of Production/Nonsupervisory Workers .....	S-28
Comparative US and NJ Civilian Labor Force Trends .....	S-29
Characteristics of New Jersey's Insured Unemployed .....	S-30
Sources and Notes .....	S-31

*New Jersey Economic Indicators* (ISSN 1064-5942) is published monthly except February (due to annual revisions). The report is prepared with the cooperation of other state and federal agencies, and it is distributed without charge by the New Jersey Department of Labor and Workforce Development, Division of Labor Market and Demographic Research. For copies or information, please contact JoAnne Caramelo at the New Jersey Department of Labor and Workforce Development, PO Box 057, Trenton, NJ 08625-0057, phone: (609) 292-2582 or e-mail: joanne.caramelo@dol.state.nj.us.

**RESTRICTIONS:** Mc-Graw Hill monthly construction contract data (Series 19-21) are published by special contract. RE-PRINTING AND ELECTRONIC DISSEMINATION OF THESE DATA ARE PROHIBITED BY LAW. All other material may be reprinted without permission; however, it would be appreciated if appropriate credit were given.

**ON THE INTERNET:** Current and recent back issues are available via the *Labor Planning and Analysis* Web site ([www.nj.gov/labor/lra](http://www.nj.gov/labor/lra))

## Comparative Economic Indicators: New Jersey and United States

New Jersey Data (Seasonally adjusted)			Latest Data	Data Series	Page Number	Year-to-Date % change from year ago (Unadjusted)	
Latest Month	Month Ago	Year Ago				NJ	US
\$442,150	\$440,552	\$428,439	3rd Quarter 08	Personal Income (millions)*	----	3.6	4.3
36,649	43,819	51,365	Oct	New Vehicle Registrations***	S-18	-9.2	-14.2
1,174	1,464	2,283	Oct	Dwelling Units Authorized**	S-16	-21.6	-34.8
4,048.2	4,054.4	4,076.0	Nov	Nonfarm Payroll Employment (000)	S-6	-0.2	-0.1
296.1	297.7	309.9	Nov	Manufacturing (000)	S-8	-3.1	-2.8
2,938.6	2,942.1	2,945.3	Nov	Private Service-providing (000)	----	0.3	0.4
275.1	273.9	188.1	Nov	Total Unemployment (000)	S-2	26.4	21.8
6.1	6.0	4.2	Nov	Total Unemployment Rate (%)	S-4	----	----
160.9	149.7	113.5	Nov	Insured Unemployment Volume (000)	S-20	14.7	26.6
4.1	3.8	2.9	Nov	Insured Unemployment Rate (%)	S-20	----	----
41.3	41.0	41.8	Nov	Average Factory Workweek (hours)**	S-28	1.6	-0.8
\$18.10	\$17.96	\$17.45	Nov	Average Factory Hourly Earnings**	S-28	4.0	2.7
\$747.53	\$736.36	\$729.41	Nov	Average Factory Weekly Earnings**	S-28	5.6	1.9

*Notes: See pages S-35 to S-38 for notes on indicators' series. (Nonbuilding construction contracts are not published; private service-providing data are found in 13-month tables on page S-23.)*

*1 Monthly revisions to unadjusted data published by special contract with McGraw-Hill Construction. Reprinting and electronic dissemination are prohibited by law.*

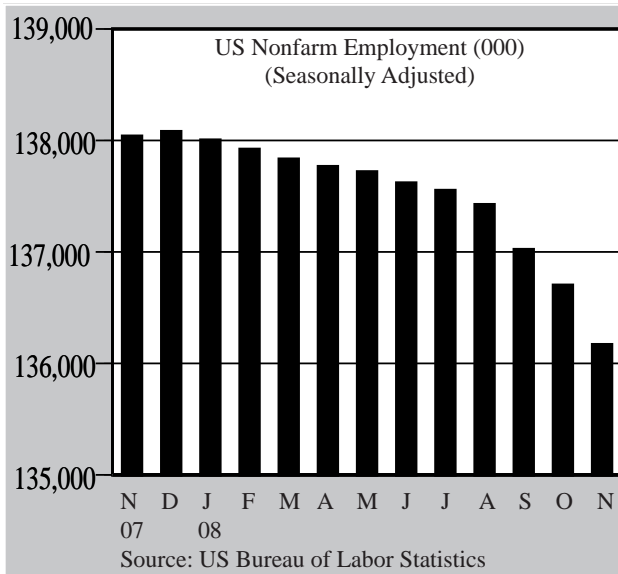
*\* Latest Month - 3rd Qtr. 2008; Month Ago - 2nd Qtr. 2008; Year Ago - 3rd Qtr. 2007 (annualized data)*

*\*\* Not seasonally adjusted.*

*\*\*\* Includes only total new cars and new light trucks/vans (weight class 0-10,000 lbs.) registered in NJ.*

## Economic Situation: The Nation

On December 1, the National Bureau of Economic Research (NBER) announced that the U.S. economy officially entered a recession in December of 2007. The announcement ended widespread speculation about the state of the economy and confirmed what many analysts have suspected for some time.



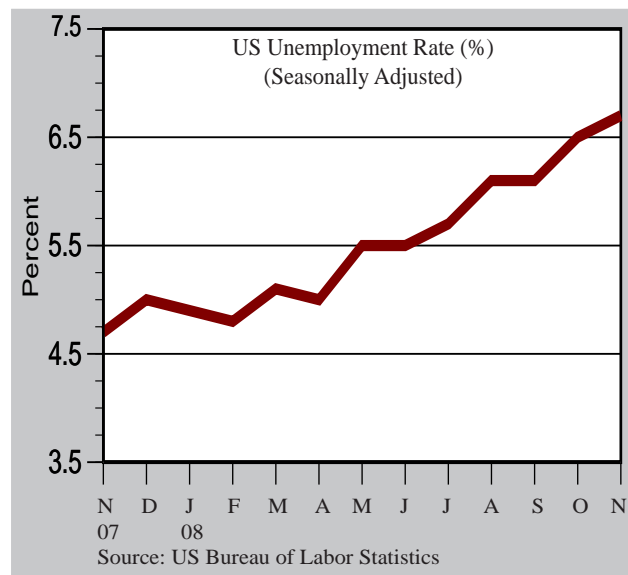
The NBER announcement came at a time of rising unemployment, declining consumer spending, and deep concerns about the solvency of the nation's financial system. Still, real GDP growth was positive in the first two quarters of this year before declining by 0.5 percent in the third quarter. The economy has suffered employment declines every month since last December, the peak of the last expansion and the starting point of the current downturn. The November loss of 533,000 jobs was particularly disturbing to many experts. In response to the overall weakness in the economy and the absence of any inflationary pressure, the Federal Reserve Board cut the federal funds rate to a record low target range of 0 to 0.25 percent.

Somewhat surprisingly, the Conference Board's Consumer Confidence Survey rebounded from an all time low reading of 38.8 in October to 44.9 in November. Falling gas prices may explain some of the rebound. The present situation index for November was little changed but there was a noticeable improvement in the expectations index. It is noteworthy that the cutoff date for the November index was November 18. The BLS jobs report for November was released on December 5.

Nonfarm employment has declined each month since December 2007. Year-to-date job losses through November 2008 total 1.9 million. Approximately two-thirds of these job losses have occurred in the last three months when employment losses have averaged 419,000. Losses peaked in November with the loss of 533,000 jobs, the largest monthly decline since December of 1974.

November employment losses were across the board. Only educational and health services, with 52,000 new jobs, had significant employment gains. Professional and business services lost 136,000 jobs while retail trade, construction, manufacturing, and leisure and hospitality lost at least 76,000 jobs each. Employment in automobile dealerships was down 24,200 in November and is off 115,500 from November of 2007.

The national unemployment rate increased to 6.7 percent in November, up from 6.5 percent in October and 4.7 in November of last year. The labor force participation rate declined from 66.1 in October to 65.8 percent



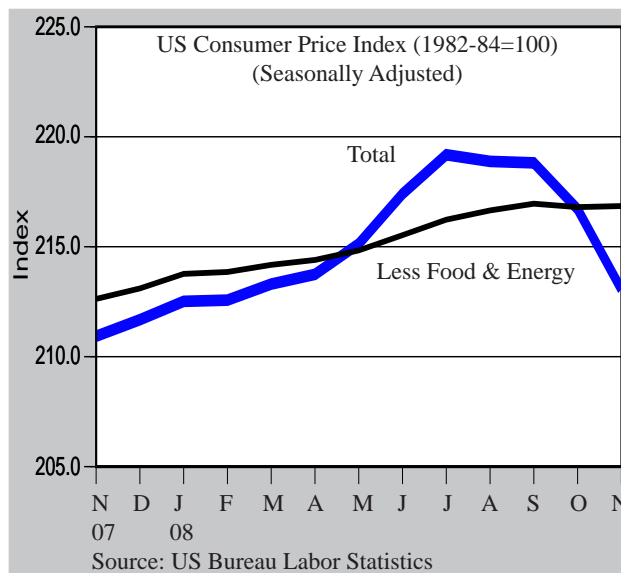
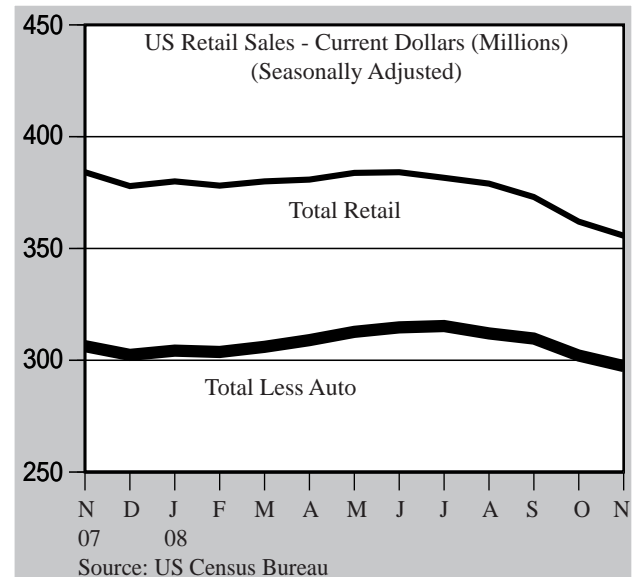
## Economic Situation: The Nation

in November. The number of people working part-time for economic reasons continued to rise, increasing sharply from 6.7 million in October to 7.3 million in November (for all industries). New claims for unemployment insurance have continued at very high levels.

Consistent with the other major indicators, retail and food service sales in November were down 1.8 percent from October and 7.4 percent from November a year ago. Though not surprising, the data are disappointing for those holding hope for a good holiday shopping season. Motor vehicle and parts sales declined by 2.8 percent from October and by 25.2 percent from a year ago. Gasoline sales, reflecting much lower gas prices, were down 14.7 percent. Sporting goods, hobby, and book stores and electronic products each had healthy growth of at least 2.5 percent. Through November, total retail sales have declined for five consecutive months and now stand at the lowest level since February 2006.

The near-term outlook for retail sales is not good. In current dollars, personal consumption expenditures in November were down 0.6 percent following declines of 0.4 and 1.0 percent in September and October. Third quarter real GDP declined by 0.5 percent, in part due to a large decline (-3.8%) in personal consumption expenditures. This decline was the first since the fourth quarter of 1991 and the largest since the second quarter of 1980.

With energy prices declining since July and weak aggregate demand, both the Producer and Consumer Price Indexes (CPI) had sharp declines in November. The 1.7 percent decline in the November CPI was a record decline for one month, and the fourth straight month without an increase. Prices have been declining at an annualized rate of 10.2 percent over the last three months. Through the first 11 months of this year, the annualized overall rate of inflation was 0.7 percent while the core rate was 1.9 percent.



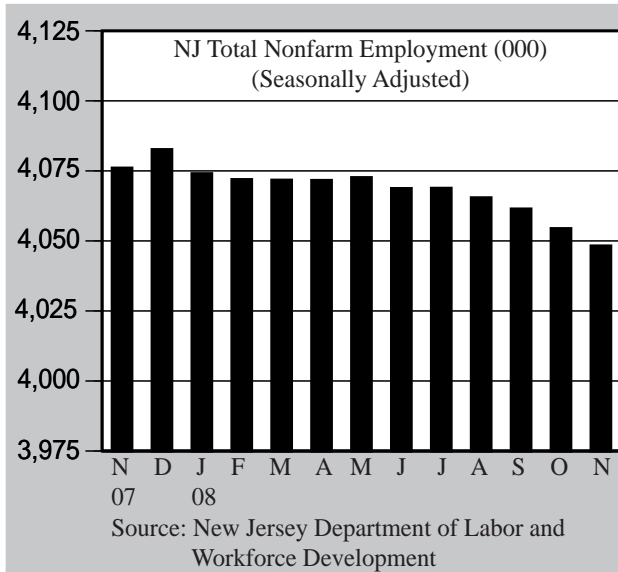
Deflation may be a bigger economic threat than inflation. Falling oil prices, a surplus of unsold houses, weak consumer demand, and economic weaknesses abroad suggest that there will be downward pressure on prices for the near term.

The Census Bureau's report on new residential construction in November was grim. Building permits were down 15.6 percent from October and 48.1 percent from November 2007. Housing starts were equally bleak, down 18.9 percent from the prior month and 47.0 percent from last November. These data, though not surprising, suggest that the housing industry has simply come to a halt.



## Economic Situation: The State

The same economic distress evident in the nation is impacting New Jersey. State employment is declining while the unemployment rate is rising. Problems in the residential real estate market, financial services, and automotive industries continue. As a high income state, New Jersey residents are more vulnerable to declines and volatilities in the financial markets than those in other states.



New Jersey lost 6,200 jobs in November. The revised estimate for October showed a loss of 7,000 jobs. Both New Jersey and the nation had moderate employment growth through the end of last year. However, employment growth in both the nation and state has trended downward this year, with employment losses increasing in recent months.

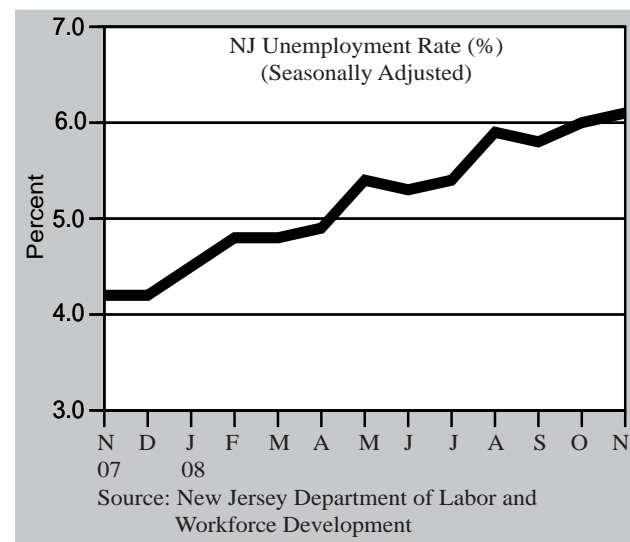
In November, the private sector lost 5,700 jobs while public sector employment was down 500. Employment losses were widespread. Professional and business services lost the most jobs (-1,900) followed by manufacturing (-1,600). Financial activities lost 900 jobs. Only educational and health services and leisure and hospitality managed

modest employment gains. Since last year, employment is up by 8,500 in educational and health services and 3,000 in professional and business services. Over the year, employment was down 13,800 in manufacturing and 8,300 in financial activities which was impacted earlier in the year by problems with subprime mortgages and more recently by the crisis in the financial system.

In November, New Jersey's unemployment rate inched up to 6.1 percent from 6.0 percent in October. Like the nation, New Jersey's unemployment rate has risen sharply since last November when the state unemployment rate was 4.2 percent. New Jersey's unemployment rate is still beneath the national rate of 6.7 percent; however, the rate is now at its highest level since August of 1996.

In November, the state's labor force participation rate declined by 0.5 percent to 66.4 percent from 66.9 percent in October. The decline could be a sign that the difficult conditions in the labor market are causing some residents to give up the search for a job or not to begin the search.

The total value of construction contracts in New Jersey declined sharply in November, with declines in all three components. The year-to-date total value of contracts is down 11.8 percent, compared to a national decline of 15.5 percent. Residential contracts are down 31.4 percent year-to-date while non-residential construction is up 14.6 percent.



## Economic Situation: The State

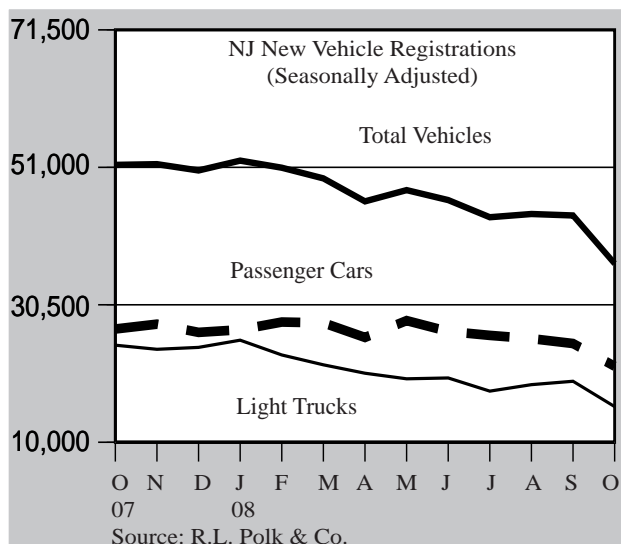
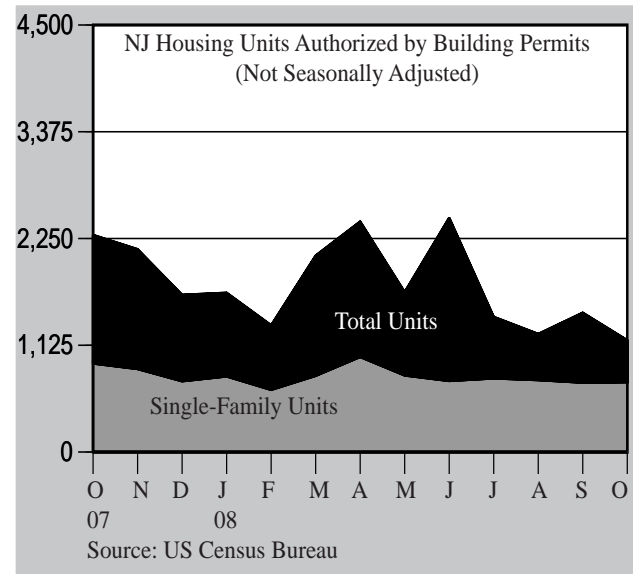
Closely watched as an indicator of future activity in construction, building permits suggest there are still serious problems in the construction industry that need to be worked out before a recovery can begin. Residential building permits in October declined to 1,174, the lowest total this year and the lowest number in the last several years.

Through October, building permits are down by 21.6 from a year ago. Nationwide, building permits are down by 34.8 percent. The same problems — mortgage foreclosures, a large inventory of unsold homes, job losses, etc. — that are hampering the industry nationally are at work in New Jersey.

The level of mortgage foreclosure activity in New Jersey is still relatively high. Based on data from RealtyTrac Inc., the number of mortgage foreclosures in November was down 34.1 percent from October but up 31.9 percent from last November. New Jersey ranks 15th nationally in the number of foreclosures with one foreclosure for every 622 households. The national average was one for every 488 households.

New Jersey total personal income increased by 0.4 percent between the second and third quarter. Nationally, there was no change. The state increase was the eighth largest in the country. However, year-to-date total personal income is up 4.3 percent nationally but up only 3.6 percent in the state.

New vehicle registrations in New Jersey were down 9.2 percent through October. Nationally, registrations were down 14.2 percent. New passenger car registrations in the state were down 2.4 percent while light truck/van registrations were down 16.8 percent. With declining gas prices, the relative performance of light truck/van registrations will likely pick up. However, until the many issues impacting the American automobile industry are resolved, new vehicle registrations will likely remain low.

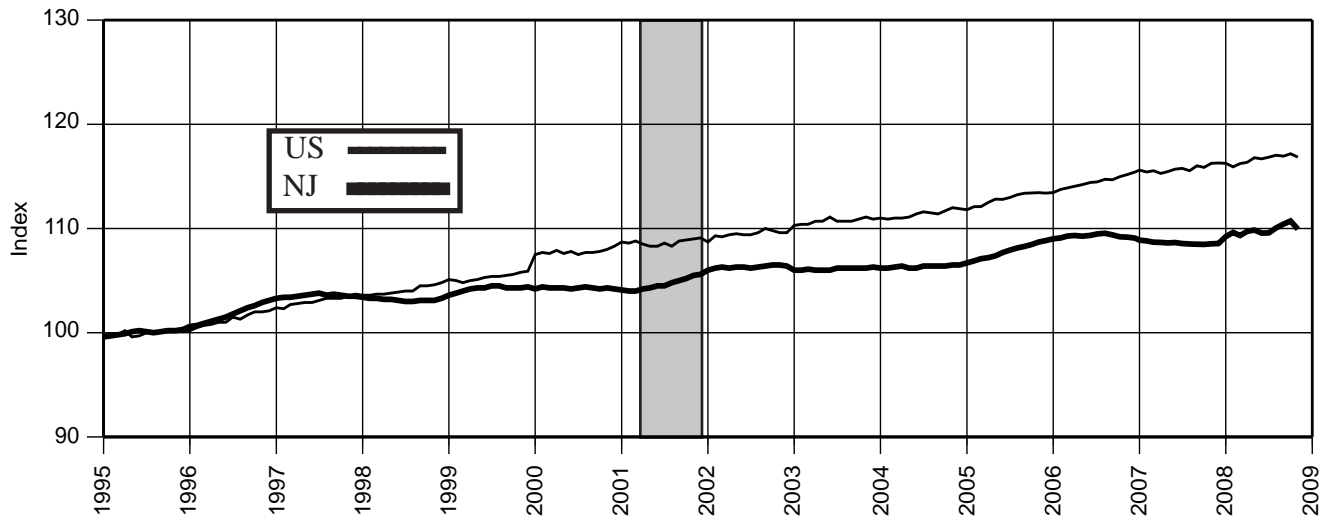


The same declines in price levels seen at the national level are also evident in the area data. For the New York/Northern New Jersey area, prices declined by 1.6 percent from October to November. The November decline was the third consecutive decline in the Consumer Price Index. From November of 2007 to November of this year, prices were up a modest 2.2 percent.

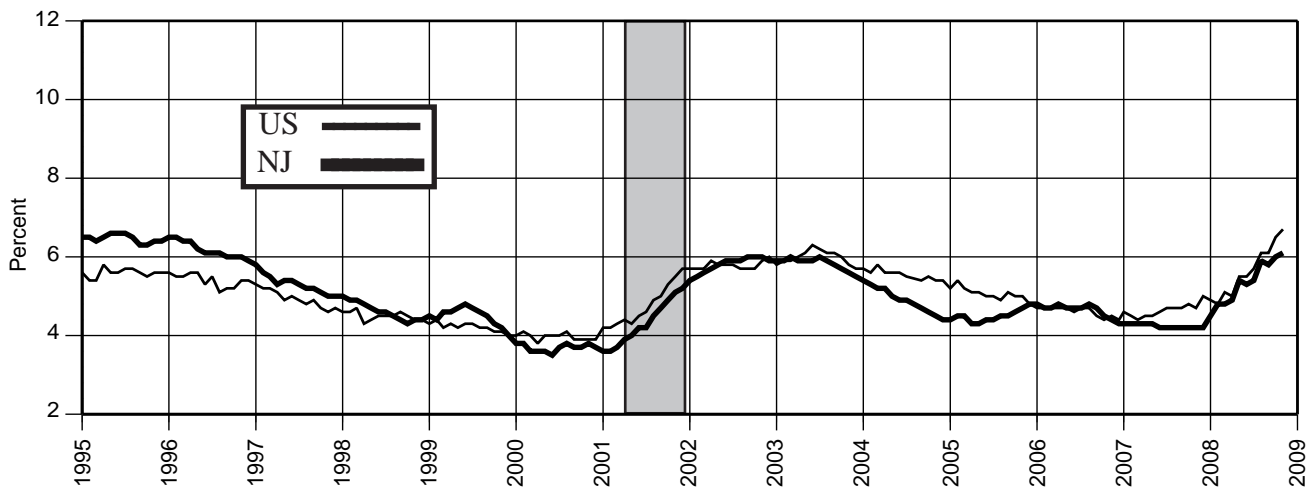
For the Philadelphia-Wilmington-Atlantic City area, prices declined by 1.4 percent from August to October, the latest period for which data are available.



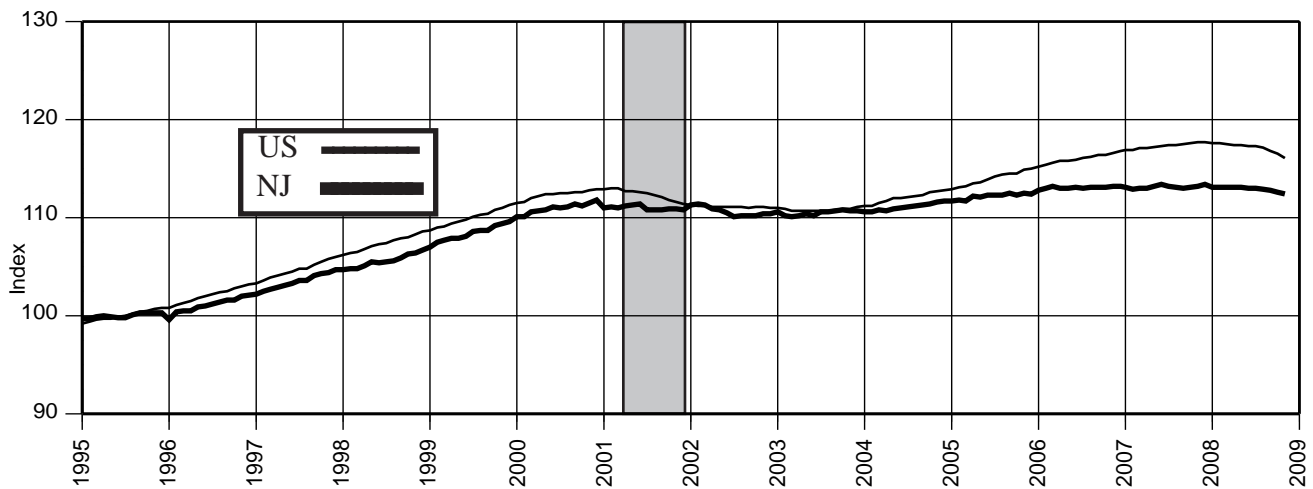
### Civilian Labor Force (1995=100)



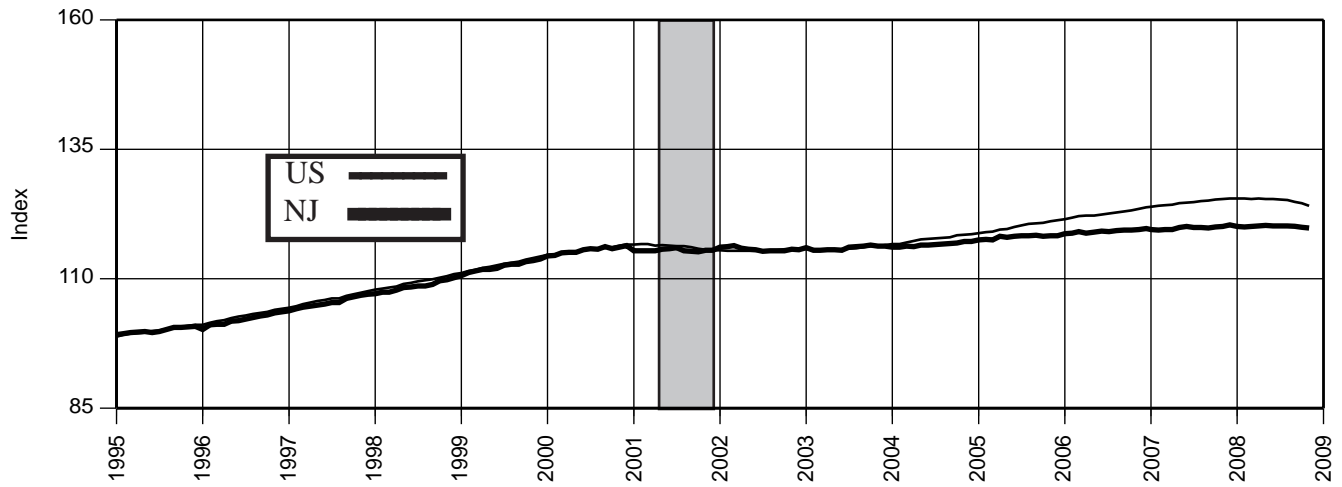
### Unemployment Rate (%)



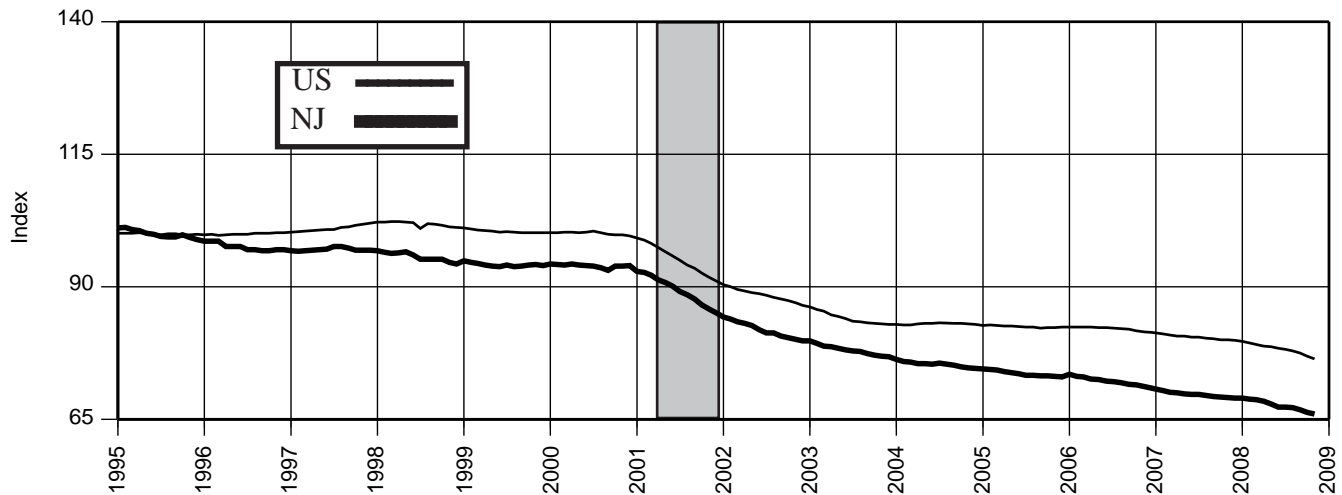
### Nonfarm Payroll Employment (1995=100)



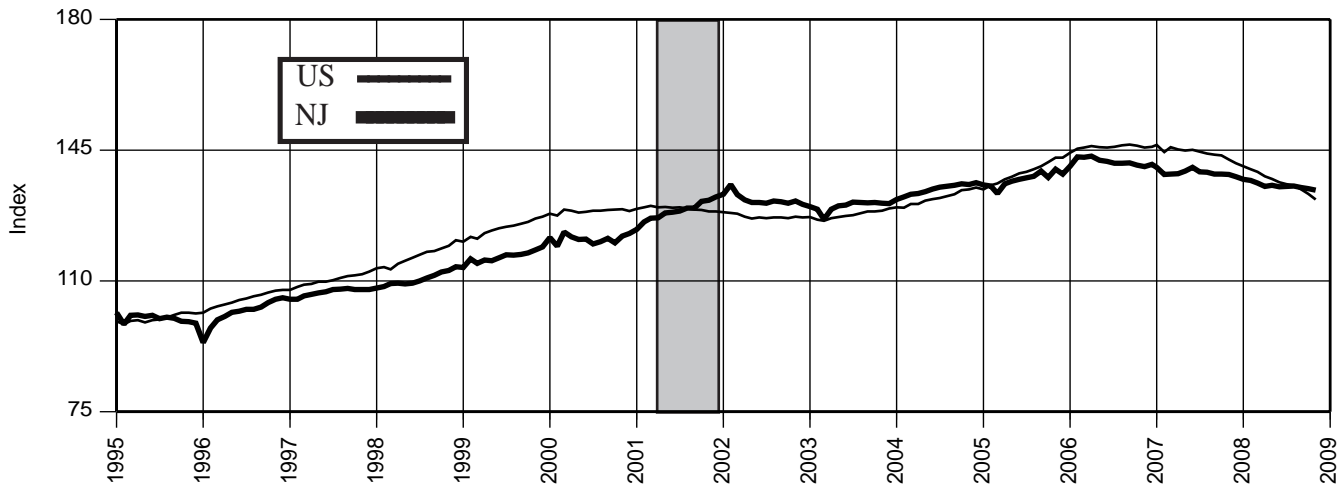
**Private Service Providing Employment (1995=100)**



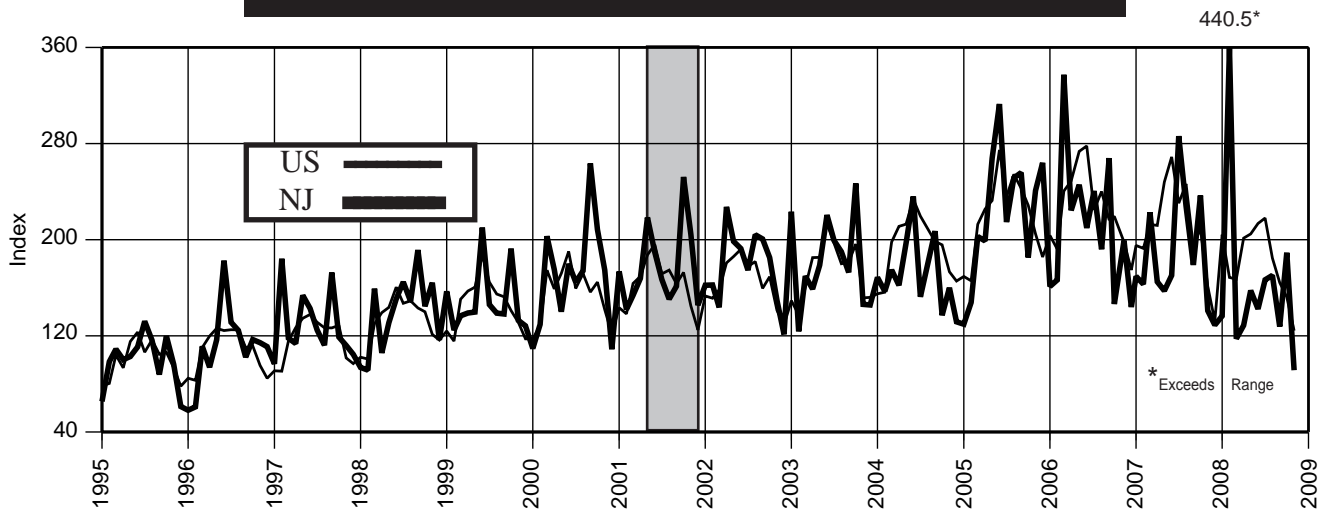
**Manufacturing Employment (1995=100)**



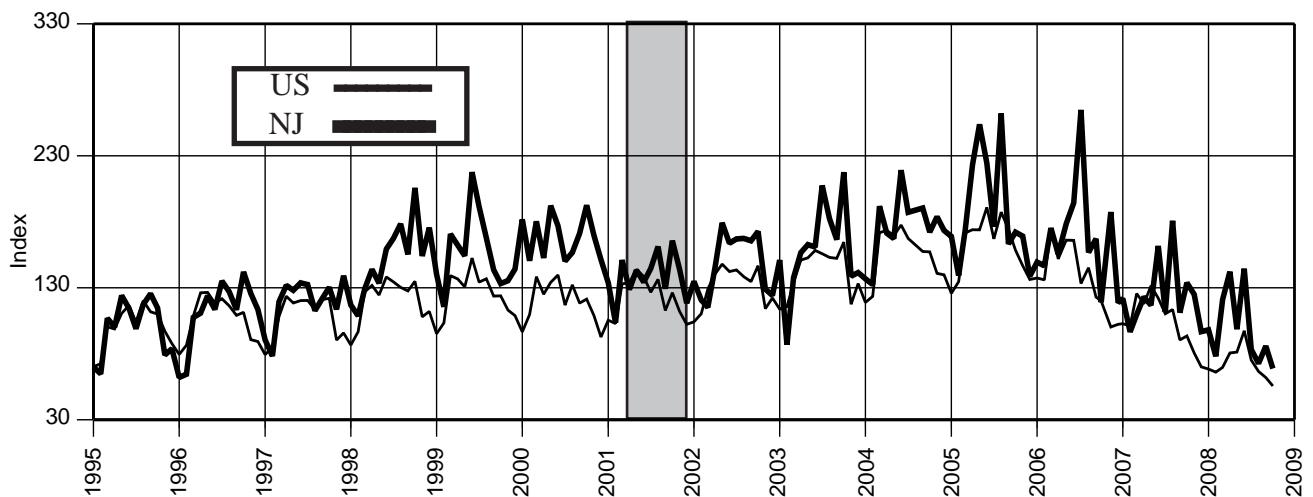
**Construction Employment (1995=100)**



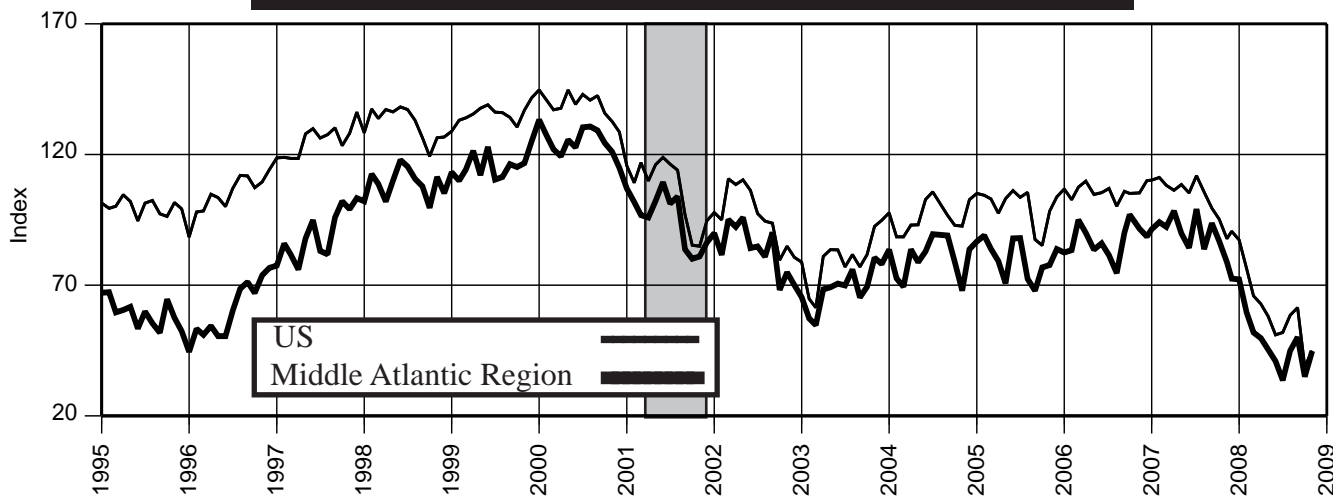
**Total Construction Contracts Awarded (1995=100)-Unadj.**



**Dwelling Units Authorized (1995=100)-Unadj.**



**Consumer Confidence Index (1995=100) - Unadj.**



### Northern Region

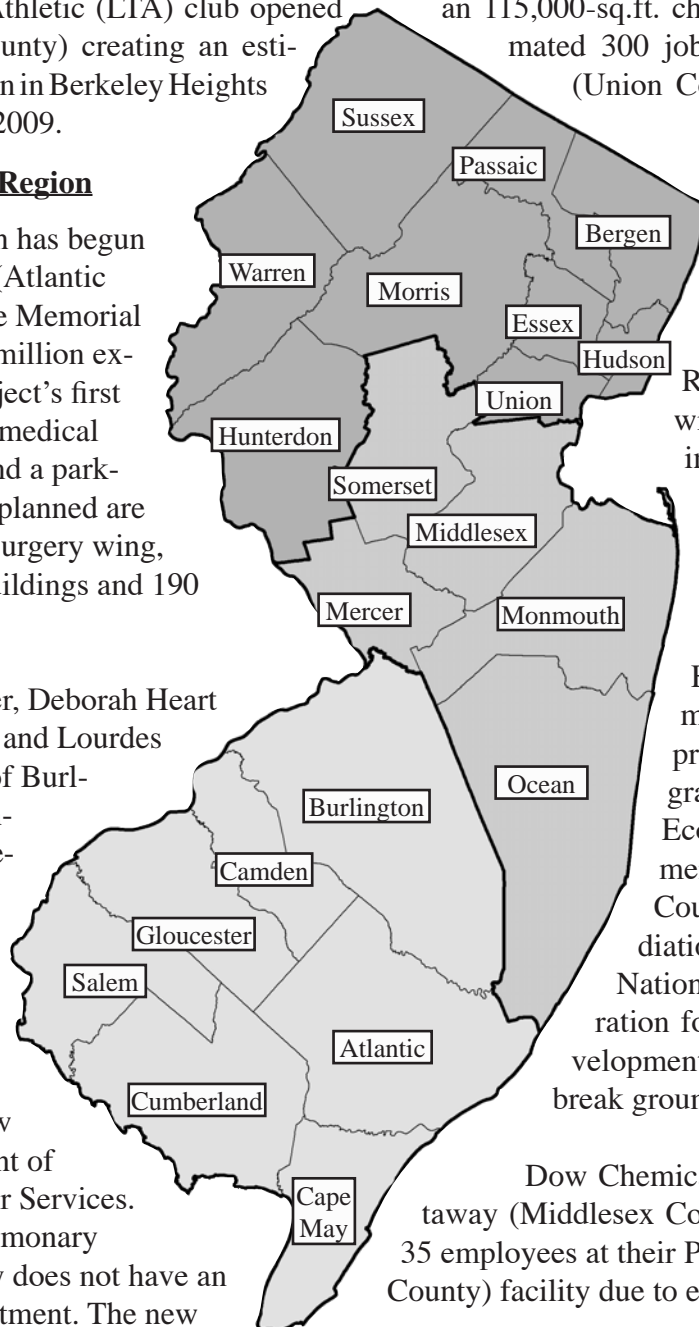
Eastman Companies is repositioning a 55,000-sq.ft. office building in Florham Park (Morris County) formerly occupied by an insurance company into a healthcare office complex. Plans focus on attracting medical examining offices, laboratories and out-patient surgery services.

Life Time Athletic (LTA) club opened an 115,000-sq.ft. child center in Florham Park (Morris County) creating an estimated 300 jobs. A second location under construction in Berkeley Heights (Union County) is expected to open in January 2009.

### Southern Region

Construction has begun in Somers Point (Atlantic County) on Shore Memorial Hospital's \$120-million expansion. The project's first phase includes a medical office building and a parking garage. Also planned are a 130,000-sq.ft. surgery wing, medical office buildings and 190 town homes.

In November, Deborah Heart and Lung Center and Lourdes Medical Center of Burlington County announced an agreement to establish an emergency room at Deborah Heart and Lung Center, pending approval of the New Jersey Department of Health and Senior Services. The specialty pulmonary hospital currently does not have an emergency department. The new facility, slated to open in January 2010, will be operated and staffed by Lourdes, and will initially employ about 30 workers.



Warren Acres Detention Center, a juvenile facility in Mansfield (Warren County), is closing in December 2008. Roughly 28 employees will be affected. Current inmates will be transferred to a facility in Morris County.

### Central Region

New Jersey's Economic Development Authority approved a \$3.7 million grant to the Sayreville Economic Redevelopment Agency (Middlesex County) towards remediation costs at the former National Lead site in preparation for a \$1.6 billion redevelopment project scheduled to break ground in January.

Dow Chemical Company in Piscataway (Middlesex County) plans to lay off 35 employees at their Piscataway (Middlesex County) facility due to economic conditions.

Gannett Newspaper has laid off an estimated 200 workers at the company's New Jersey papers, including 12 employees at the Home News Tribune in New Brunswick (Middlesex County) and 58 employees at the Asbury Park Press in Neptune (Monmouth County).

**Labor Area Focus (cont.)****Labor Area Nonfarm Payroll Employment**

(not seasonally adjusted)

	2007		2008										
	Nov	Dec	Jan	Feb	Mar	Apr	May	Jun	Jul	Aug	Sep	Oct	Nov
<b>Atlantic City Labor Area (Atlantic County)</b>													
<b>Total Nonfarm</b>	149.2	149.6	145.8	145.7	146.8	147.8	150.1	152.7	154.5	153.9	151.9	148.9	147.7
<b>Total Private Sector</b>	126.3	126.7	123.6	123.2	124.1	125.1	127.2	130.3	132.4	131.7	129.2	125.9	124.7
<b>Government</b>	22.9	22.9	22.2	22.5	22.7	22.7	22.9	22.4	22.1	22.2	22.7	23.0	23.0
<b>Bergen-Passaic Labor Area (Bergen &amp; Passaic counties)</b>													
<b>Total Nonfarm</b>	669.6	672.2	650.8	650.8	654.0	658.7	662.3	666.1	657.1	654.1	660.5	663.2	668.3
<b>Total Private Sector</b>	586.5	589.0	569.8	568.3	571.1	575.2	579.3	582.6	578.0	577.6	580.1	580.0	584.1
<b>Government</b>	83.1	83.2	81.0	82.5	82.9	83.5	83.0	83.5	79.1	76.5	80.4	83.2	84.2
<b>Camden Labor Area (Burlington, Camden &amp; Gloucester counties)</b>													
<b>Total Nonfarm</b>	548.2	550.1	535.9	535.6	540.1	543.0	545.7	550.0	541.2	538.9	540.5	543.9	547.3
<b>Total Private Sector</b>	457.7	459.8	447.0	444.9	448.8	451.6	455.3	459.3	457.1	455.7	452.7	452.0	454.7
<b>Government</b>	90.5	90.3	88.9	90.7	91.3	91.4	90.4	90.7	84.1	83.2	87.8	91.9	92.6
<b>Edison Labor Area (Middlesex, Monmouth, Ocean &amp; Somerset counties)</b>													
<b>Total Nonfarm</b>	1,049.0	1,049.0	1,015.7	1,014.4	1,025.0	1,034.8	1,045.2	1,060.6	1,052.4	1,047.9	1,040.5	1,040.9	1,044.7
<b>Total Private Sector</b>	895.6	896.2	865.7	861.2	870.0	880.6	891.4	907.1	908.1	906.3	894.4	888.3	891.0
<b>Government</b>	153.4	152.8	150.0	153.2	155.0	154.2	153.8	153.5	144.3	141.6	146.1	152.6	153.7
<b>Jersey City Labor Area (Hudson County)</b>													
<b>Total Nonfarm</b>	251.2	252.3	246.6	247.0	248.0	247.3	248.4	248.4	244.3	243.6	248.6	249.7	251.1
<b>Total Private Sector</b>	209.5	210.2	205.0	204.8	205.7	205.7	206.5	207.1	204.7	205.3	208.4	207.9	209.1
<b>Government</b>	41.7	42.1	41.6	42.2	42.3	41.6	41.9	41.3	39.6	38.3	40.2	41.8	42.0
<b>Newark Labor Area (Essex, Hunterdon, Morris, Sussex &amp; Union counties)</b>													
<b>Total Nonfarm</b>	1,043.9	1,048.9	1,023.3	1,021.1	1,025.6	1,032.4	1,039.6	1,047.4	1,036.7	1,031.0	1,033.5	1,038.8	1,042.8
<b>Total Private Sector</b>	876.2	880.4	857.5	853.8	858.3	864.1	871.6	879.2	873.6	870.8	869.8	871.4	874.1
<b>Government</b>	167.7	168.5	165.8	167.3	167.3	168.3	168.0	168.2	163.1	160.2	163.7	167.4	168.7
<b>Ocean City Labor Area (Cape May County)</b>													
<b>Total Nonfarm</b>	39.0	38.5	34.9	34.8	35.5	38.2	43.5	52.6	57.3	56.4	48.8	41.2	38.3
<b>Total Private Sector</b>	29.6	29.1	25.6	25.5	26.2	28.9	33.7	42.0	47.3	46.5	38.7	31.7	29.4
<b>Government</b>	9.4	9.4	9.3	9.3	9.3	9.3	9.8	10.6	10.0	9.9	10.1	9.5	9.4
<b>Salem Labor Area (Salem County)</b>													
<b>Total Nonfarm</b>	23.5	23.4	23.4	23.4	23.4	23.9	24.3	24.3	23.7	23.7	24.0	23.9	24.0
<b>Total Private Sector</b>	18.6	18.5	18.5	18.5	18.5	19.0	19.3	19.3	19.3	19.2	19.3	19.1	19.1
<b>Government</b>	4.9	4.9	4.9	4.9	4.9	4.9	5.0	5.0	4.4	4.5	4.7	4.8	4.9
<b>Trenton-Ewing Labor Area (Mercer County)</b>													
<b>Total Nonfarm</b>	240.2	240.9	237.5	237.1	238.4	239.4	239.0	239.8	237.4	236.1	236.8	237.8	238.2
<b>Total Private Sector</b>	172.7	173.3	169.7	169.1	170.2	171.3	172.1	172.7	171.9	171.0	170.8	170.7	171.0
<b>Government</b>	67.5	67.6	67.8	68.0	68.2	68.1	66.9	67.1	65.5	65.1	66.0	67.1	67.2
<b>Vineland-Millville-Bridgeton Labor Area (Cumberland County)</b>													
<b>Total Nonfarm</b>	62.5	62.4	60.9	60.9	61.1	61.3	61.9	61.8	59.6	59.4	60.8	61.5	61.5
<b>Total Private Sector</b>	47.3	47.2	46.0	45.7	45.8	46.1	46.6	46.8	46.6	46.4	46.2	46.1	46.0
<b>Government</b>	15.2	15.2	14.9	15.2	15.3	15.2	15.3	15.0	13.0	13.0	14.6	15.4	15.5
<b>Warren Labor Area (Warren County)</b>													
<b>Total Nonfarm</b>	39.2	39.1	38.1	37.9	37.9	38.0	38.6	38.7	38.3	38.9	37.2	38.5	39.0
<b>Total Private Sector</b>	32.4	32.4	31.6	31.3	31.3	31.4	31.8	31.9	31.9	32.6	30.6	31.8	32.3
<b>Government</b>	6.8	6.7	6.5	6.6	6.6	6.6	6.8	6.8	6.4	6.3	6.6	6.7	6.7

**Labor Area Focus (cont.)****Labor Area Civilian Labor Force**

(seasonally adjusted)

	2007		2008										
	Nov	Dec	Jan	Feb	Mar	Apr	May	Jun	Jul	Aug	Sep	Oct	Nov
<b><u>Atlantic City Labor Area (Atlantic County)</u></b>													
Labor Force	135.1	135.6	136.5	137.8	136.7	136.4	136.9	135.9	136.6	138.1	137.4	138.5	137.9
Employment	127.4	127.7	128.5	129.7	128.4	127.9	127.7	127.1	127.7	127.8	127.1	127.1	125.4
Unemployment Volume	7.7	7.9	8.0	8.1	8.3	8.5	9.2	8.8	8.9	10.3	10.3	11.4	11.7
Unemployment Rate (%)	5.7	5.8	5.9	5.9	6.1	6.2	6.7	6.5	6.5	7.5	7.5	8.2	8.5
<b><u>Bergen-Passaic Labor Area (Bergen &amp; Passaic Counties)</u></b>													
Labor Force	713.6	713.1	715.6	718.5	716.4	720.1	721.8	719.7	720.8	724.5	724.4	725.5	719.7
Employment	684.5	682.2	683.1	684.1	682.1	685.5	684.1	683.1	684.0	683.6	684.5	683.3	677.8
Unemployment Volume	29.1	30.9	32.5	34.4	34.3	34.6	37.7	36.6	36.8	40.9	39.9	42.2	41.9
Unemployment Rate (%)	4.1	4.3	4.5	4.8	4.8	4.8	5.2	5.1	5.1	5.6	5.5	5.8	5.8
<b><u>Camden Labor Area (Burlington, Camden &amp; Gloucester Counties)</u></b>													
Labor Force	660.3	659.8	663.7	666.4	664.9	665.2	667.7	666.3	667.1	670.5	669.8	672.1	667.2
Employment	632.1	630.2	632.9	633.9	632.2	633.2	631.9	631.3	631.6	631.1	631.3	630.8	626.2
Unemployment Volume	28.2	29.6	30.8	32.5	32.7	32.0	35.8	35.0	35.5	39.4	38.5	41.3	41.0
Unemployment Rate (%)	4.3	4.5	4.6	4.9	4.9	4.8	5.4	5.3	5.3	5.9	5.7	6.1	6.1
<b><u>Edison Labor Area (Middlesex, Monmouth, Somerset &amp; Ocean Counties)</u></b>													
Labor Force	1,194.5	1,192.1	1,196.8	1,201.5	1,199.2	1,204.1	1,206.4	1,204.2	1,205.5	1,209.9	1,211.2	1,213.1	1,203.6
Employment	1,149.2	1,144.1	1,146.8	1,147.2	1,144.8	1,149.4	1,146.3	1,145.2	1,146.0	1,144.2	1,146.5	1,145.5	1,136.8
Unemployment Volume	45.3	48.0	50.0	54.3	54.4	54.7	60.1	59.0	59.5	65.7	64.7	67.6	66.8
Unemployment Rate (%)	3.8	4.0	4.2	4.5	4.5	4.5	5.0	4.9	4.9	5.4	5.3	5.6	5.6
<b><u>Jersey City Labor Area (Hudson County)</u></b>													
Labor Force	290.7	290.0	292.1	293.2	292.7	293.6	295.2	294.2	294.6	296.5	296.4	297.6	294.9
Employment	276.3	275.0	276.5	276.6	275.8	277.1	276.4	275.9	276.3	275.8	276.4	276.0	273.7
Unemployment Volume	14.4	15.0	15.6	16.6	16.9	16.5	18.8	18.3	18.3	20.7	20.0	21.6	21.2
Unemployment Rate (%)	5.0	5.2	5.3	5.7	5.8	5.6	6.4	6.2	6.2	7.0	6.7	7.3	7.2
<b><u>Newark-Union Labor Area (Essex, Hunterdon, Morris, Sussex &amp; Union Counties)</u></b>													
Labor Force	1,061.8	1,061.2	1,067.0	1,069.6	1,067.0	1,071.2	1,075.3	1,073.1	1,074.1	1,079.3	1,079.6	1,081.9	1,071.9
Employment	1,017.2	1,014.2	1,018.2	1,017.6	1,014.5	1,018.8	1,017.3	1,016.5	1,017.0	1,016.4	1,018.4	1,016.9	1,008.2
Unemployment Volume	44.6	47.0	48.8	52.0	52.5	52.4	58.0	56.6	57.1	62.9	61.2	65.0	63.7
Unemployment Rate (%)	4.2	4.4	4.6	4.9	4.9	4.9	5.4	5.3	5.3	5.8	5.7	6.0	5.9
<b><u>Ocean City Labor Area (Cape May County)</u></b>													
Labor Force	56.7	56.9	56.9	57.4	57.2	57.1	57.8	58.8	57.9	58.7	58.4	58.9	58.0
Employment	53.1	53.1	53.0	53.5	53.0	52.8	53.3	54.3	53.5	53.5	53.4	53.1	52.6
Unemployment Volume	3.6	3.8	3.9	3.9	4.2	4.3	4.5	4.5	4.4	5.2	5.0	5.8	5.4
Unemployment Rate (%)	6.3	6.7	6.9	6.8	7.3	7.5	7.8	7.7	7.6	8.9	8.6	9.8	9.3
<b><u>Salem Labor Area (Salem County)</u></b>													
Labor Force	31.9	32.1	31.9	31.9	31.8	32.2	32.4	32.3	32.4	32.8	32.6	33.0	32.3
Employment	30.3	30.4	30.3	30.4	30.2	30.3	30.3	30.4	30.4	30.5	30.4	30.3	29.9
Unemployment Volume	1.6	1.7	1.6	1.5	1.6	1.9	2.1	1.9	2.0	2.3	2.2	2.7	2.4
Unemployment Rate (%)	5.0	5.3	5.0	4.7	5.0	5.9	6.5	5.9	6.2	7.0	6.7	8.2	7.4
<b><u>Trenton-Ewing Labor Area (Mercer County)</u></b>													
Labor Force	196.6	196.5	198.6	198.9	198.5	199.0	198.7	198.1	198.7	199.2	199.3	198.9	197.0
Employment	189.1	188.6	190.5	190.1	189.7	190.0	188.7	188.5	188.9	188.5	189.2	188.3	186.5
Unemployment Volume	7.5	7.9	8.1	8.8	8.8	9.0	10.0	9.6	9.8	10.7	10.1	10.6	10.5
Unemployment Rate (%)	3.8	4.0	4.1	4.4	4.4	4.5	5.0	4.8	4.9	5.4	5.1	5.3	5.3
<b><u>Vineland-Millville-Bridgeton Labor Area (Cumberland County)</u></b>													
Labor Force	68.3	68.4	68.6	69.6	68.7	68.8	69.2	69.2	69.4	69.8	70.0	70.5	69.9
Employment	64.0	64.0	63.8	64.7	63.9	63.7	63.8	64.0	64.1	63.7	63.9	63.7	63.3
Unemployment Volume	4.3	4.4	4.8	4.9	4.8	5.1	5.4	5.2	5.3	6.1	6.1	6.8	6.6
Unemployment Rate (%)	6.3	6.4	7.0	7.0	7.0	7.4	7.8	7.5	7.6	8.7	8.7	9.6	9.4



# NEW JERSEY ECONOMIC INDICATORS

## NEW JERSEY ECONOMIC INDICATORS

NEW  
ECO

### Statistical Section and Notes

ORS

INDICATORS

## NEW JERSEY ECONOMIC INDICATORS

## NEW JERSEY ECONOMIC INDICATORS

## NEW JERSEY ECONOMIC INDICATORS

## NEW JERSEY ECONOMIC INDICATORS

## NEW JERSEY ECONOMIC INDICATORS

### 1. Civilian Labor Force (000)

Date	2005		2006		2007		2008	
	Unadj.	Adj.	Unadj.	Adj.	Unadj.	Adj.	Unadj.	Adj.
Jan	4,352.9	4,387.4	4,447.4	4,482.4	4,459.2	4,477.1	4,463.8	4,491.2
Feb	4,378.2	4,397.1	4,467.6	4,485.7	4,456.1	4,474.0	4,486.3	4,507.7
Mar	4,387.8	4,402.5	4,475.0	4,493.0	4,461.4	4,469.0	4,481.4	4,495.3
Apr	4,385.1	4,407.5	4,470.9	4,495.4	4,439.0	4,468.1	4,483.2	4,511.9
May	4,401.2	4,415.0	4,478.8	4,492.8	4,445.1	4,466.1	4,502.7	4,516.8
Jun	4,466.0	4,428.2	4,537.0	4,495.7	4,505.7	4,467.6	4,552.7	4,505.0
Jul	4,499.5	4,437.6	4,563.8	4,501.7	4,526.4	4,463.7	4,582.2	4,505.6
Aug	4,475.4	4,446.0	4,531.6	4,504.3	4,475.2	4,462.0	4,563.1	4,525.5
Sep	4,430.9	4,452.3	4,466.2	4,497.8	4,441.6	4,461.0	4,512.0	4,540.2
Oct	4,458.9	4,459.7	4,484.1	4,490.3	4,447.1	4,460.3	4,539.6R	4,552.7
Nov	4,471.0	4,469.8	4,495.0	4,489.0	4,472.2	4,462.6	4,513.9	4,520.7
Dec	4,472.0	4,475.5	4,496.0	4,485.2	4,466.3	4,463.8		

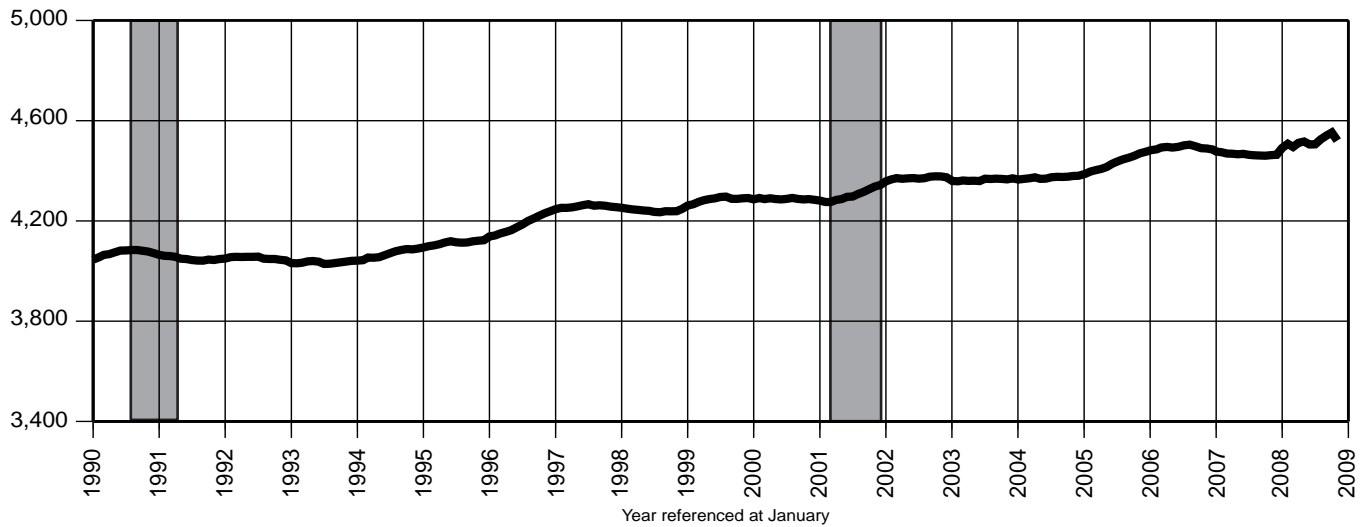
### 2. Resident Employment (000)

Date	2005		2006		2007		2008	
	Unadj.	Adj.	Unadj.	Adj.	Unadj.	Adj.	Unadj.	Adj.
Jan	4,142.6	4,194.5	4,221.0	4,267.8	4,244.3	4,285.3	4,235.8	4,287.1
Feb	4,157.4	4,200.0	4,233.2	4,273.3	4,248.6	4,281.4	4,248.2	4,291.3
Mar	4,178.2	4,206.3	4,253.2	4,281.7	4,265.8	4,275.5	4,250.6	4,278.2
Apr	4,206.0	4,218.1	4,259.5	4,280.6	4,259.3	4,275.0	4,269.8	4,288.6
May	4,221.1	4,225.2	4,269.5	4,280.7	4,265.4	4,275.8	4,267.2	4,273.9
Jun	4,271.6	4,234.6	4,320.4	4,283.9	4,314.4	4,278.4	4,311.7	4,267.4
Jul	4,282.5	4,240.7	4,320.7	4,288.0	4,310.0	4,274.3	4,314.2	4,260.1
Aug	4,285.0	4,244.9	4,320.0	4,290.1	4,292.8	4,274.2	4,301.0	4,258.1
Sep	4,236.9	4,251.6	4,267.7	4,287.7	4,261.0	4,273.8	4,260.1	4,276.1
Oct	4,273.8	4,256.8	4,307.3	4,289.3	4,277.2	4,274.8	4,283.6R	4,278.7R
Nov	4,266.8	4,260.0	4,310.8	4,289.7	4,297.1	4,274.6	4,253.4	4,245.6
Dec	4,272.4	4,261.5	4,319.9	4,290.5	4,282.8	4,275.8		

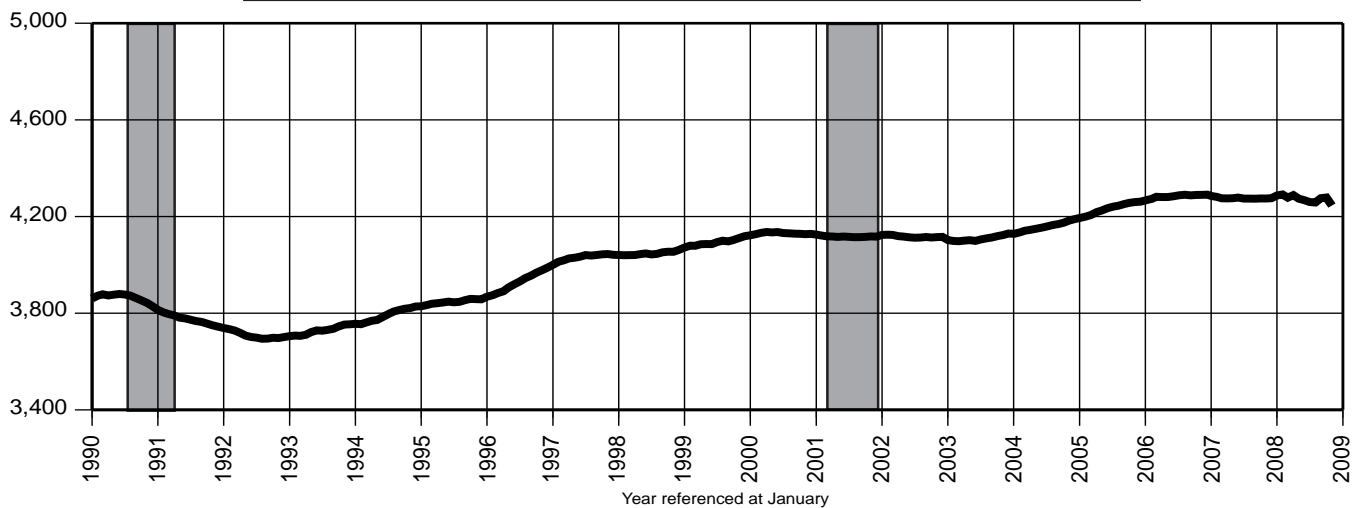
### 3. Unemployment (000)

Date	2005		2006		2007		2008	
	Unadj.	Adj.	Unadj.	Adj.	Unadj.	Adj.	Unadj.	Adj.
Jan	210.3	192.9	226.4	214.6	214.9	191.8	228.1	204.1
Feb	220.9	197.1	234.4	212.4	207.4	192.6	238.2	216.3
Mar	209.6	196.2	221.7	211.3	195.6	193.6	230.8	217.1
Apr	179.1	189.4	211.4	214.8	179.7	193.1	213.4	223.3
May	180.1	189.8	209.2	212.2	179.7	190.3	235.5	242.9
Jun	194.3	193.6	216.6	211.8	191.3	189.3	241.0	237.6
Jul	217.0	197.0	243.1	213.7	216.4	189.4	268.0	245.5
Aug	190.4	201.1	211.6	214.1	182.5	187.7	262.1	267.4
Sep	194.1	200.6	198.4	210.1	180.6	187.2	251.9	264.1
Oct	185.1	203.0	176.7	200.9	169.9	185.5	256.0R	273.9R
Nov	204.2	209.8	184.2	199.3	175.1	188.1	260.4	275.1
Dec	199.6	214.0	176.1	194.8	183.5	188.0		

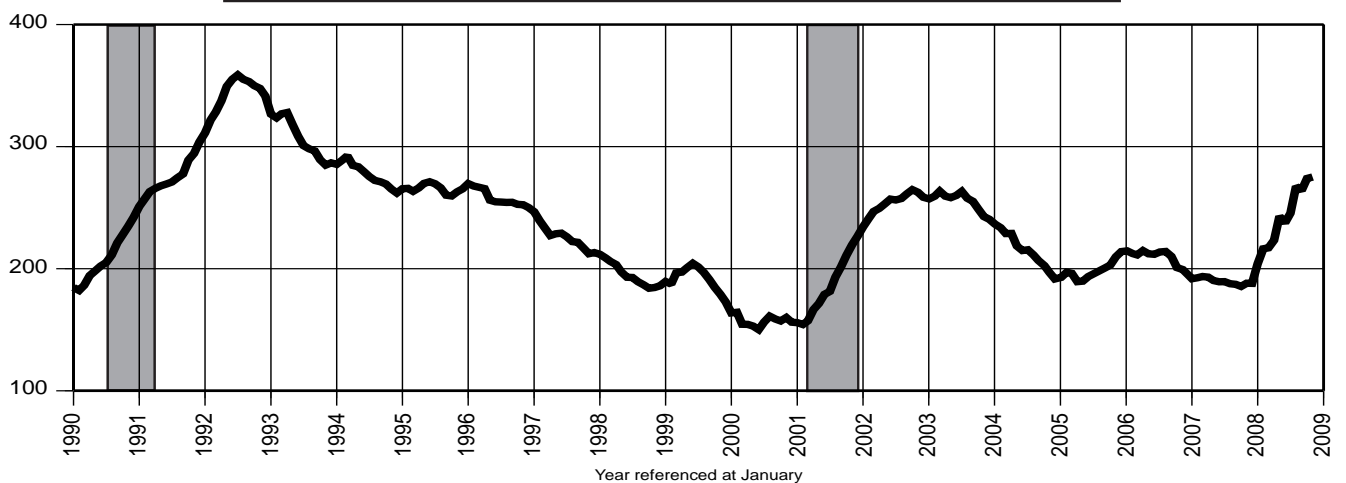
### 1. Civilian Labor Force (000)



### 2. Resident Employment (000)



### 3. Unemployment (000)



## Indicator Series 4-6 Resident Labor Force

### 4. Labor Force Participation Rate (%)

Date	2005		2006		2007		2008	
	Unadj.	Adj.	Unadj.	Adj.	Unadj.	Adj.	Unadj.	Adj.
Jan	65.3	65.8	66.4	66.9	66.2	66.5	65.9	66.3
Feb	65.7	66.0	66.6	66.9	66.1	66.4	66.2	66.5
Mar	65.8	66.0	66.7	67.0	66.2	66.3	66.1	66.3
Apr	65.8	66.1	66.7	67.0	65.9	66.3	66.1	66.5
May	66.0	66.2	66.8	67.0	65.9	66.2	66.3	66.5
Jun	66.9	66.3	67.6	67.0	66.8	66.2	67.0	66.3
Jul	67.4	66.4	68.0	67.1	67.1	66.1	67.4	66.3
Aug	67.0	66.5	67.5	67.1	66.3	66.1	67.1	66.6
Sep	66.3	66.6	66.5	66.9	65.7	66.0	66.3	66.7
Oct	66.6	66.6	66.7	66.8	65.7	65.9	66.7	66.9
Nov	66.8	66.8	66.8	66.7	66.1	65.9	66.3	66.4
Dec	66.8	66.8	66.8	66.6	66.0	65.9		

### 5. Employment /Population Ratio (%)

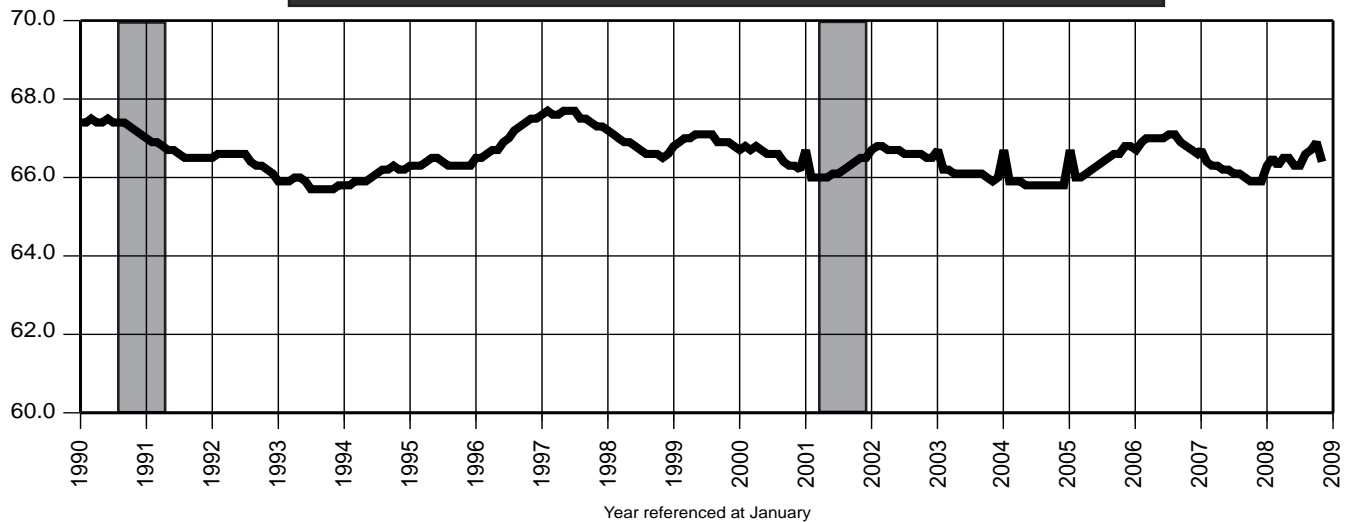
Date	2005		2006		2007		2008	
	Unadj.	Adj.	Unadj.	Adj.	Unadj.	Adj.	Unadj.	Adj.
Jan	62.2	63.0	63.0	63.7	63.0	63.6	62.5	63.3
Feb	62.4	63.0	63.1	63.7	63.1	63.6	62.7	63.3
Mar	62.7	63.1	63.4	63.9	63.3	63.5	62.7	63.1
Apr	63.1	63.3	63.5	63.8	63.2	63.4	62.9	63.2
May	63.3	63.3	63.6	63.8	63.3	63.4	62.9	63.0
Jun	64.0	63.4	64.4	63.8	64.0	63.4	63.5	62.8
Jul	64.1	63.5	64.4	63.9	63.9	63.3	63.5	62.7
Aug	64.1	63.5	64.3	63.9	63.6	63.3	63.3	62.6
Sep	63.4	63.6	63.5	63.8	63.0	63.2	62.6	62.8
Oct	63.9	63.6	64.1	63.8	63.2	63.2	62.9	62.8
Nov	63.7	63.6	64.1	63.8	63.5	63.2	62.4	62.3
Dec	63.8	63.6	64.2	63.7	63.2	63.1		

### 6. Unemployment Rate (%)

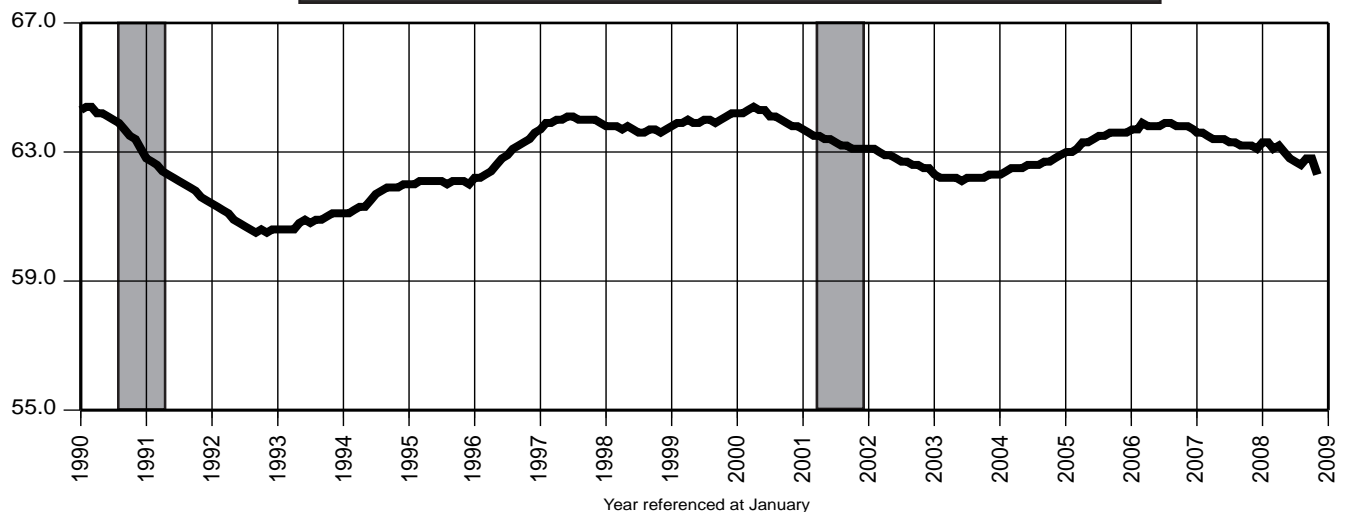
Date	2005		2006		2007		2008	
	Unadj.	Adj.	Unadj.	Adj.	Unadj.	Adj.	Unadj.	Adj.
Jan	4.8	4.4	5.1	4.8	4.8	4.3	5.1	4.5
Feb	5.0	4.5	5.2	4.7	4.7	4.3	5.3	4.8
Mar	4.8	4.5	5.0	4.7	4.4	4.3	5.1	4.8
Apr	4.1	4.3	4.7	4.8	4.0	4.3	4.8	4.9
May	4.1	4.3	4.7	4.7	4.0	4.3	5.2	5.4
Jun	4.4	4.4	4.8	4.7	4.2	4.2	5.3	5.3
Jul	4.8	4.4	5.3	4.7	4.8	4.2	5.8	5.4
Aug	4.3	4.5	4.7	4.8	4.1	4.2	5.7	5.9
Sep	4.4	4.5	4.4	4.7	4.1	4.2	5.6	5.8
Oct	4.2	4.6	3.9	4.5	3.8	4.2	5.6	6.0
Nov	4.6	4.7	4.1	4.4	3.9	4.2	5.8	6.1
Dec	4.5	4.8	3.9	4.3	4.1	4.2		

## Indicator Series 4-6 Resident Labor Force

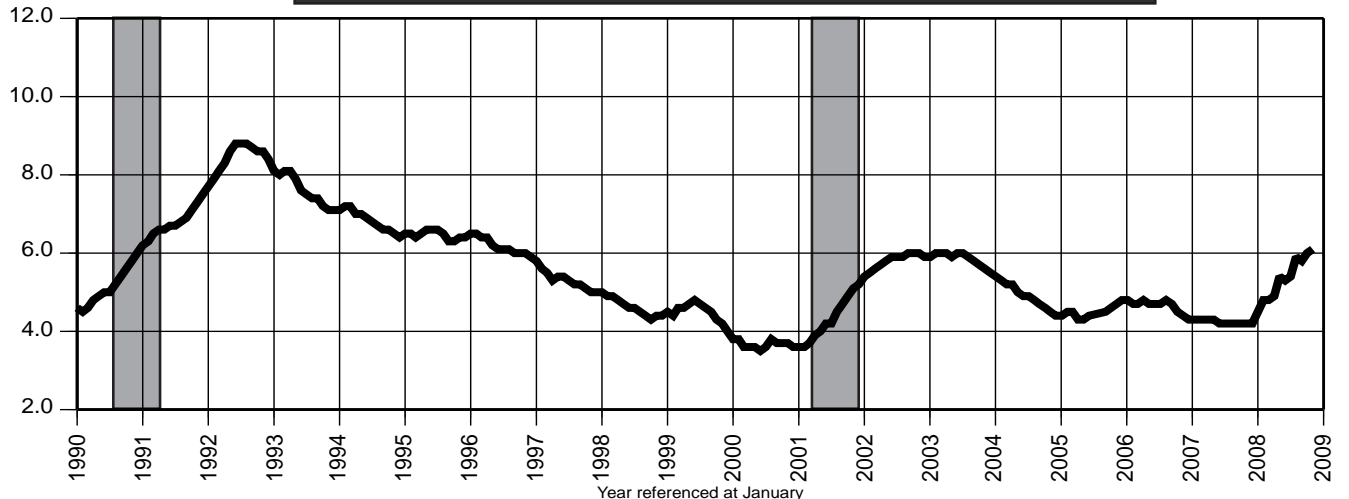
### 4. Labor Force Participation Rate (%)



### 5. Employment /Population Ratio (%)



### 6. Unemployment Rate (%)



You're viewing an archived copy from the New Jersey State Library.

## Indicator Series 7-9 Establishment Employment

### 7. Nonfarm Payroll Employment (000)

Date	2005		2006		2007		2008	
	Unadj.	Adj.	Unadj.	Adj.	Unadj.	Adj.	Unadj.	Adj.
Jan	3,946.0	4,023.8	3,984.6	4,063.2	3,993.6	4,071.9	4,008.0	4,074.0
Feb	3,951.3	4,026.5	3,992.5	4,068.8	3,989.4	4,066.3	4,003.2	4,071.9
Mar	3,975.3	4,021.2	4,028.4	4,075.0	4,020.6	4,067.2	4,028.2	4,071.7
Apr	4,024.8	4,040.6	4,050.8	4,067.2	4,050.1	4,067.3	4,058.7	4,071.6
May	4,057.6	4,036.3	4,090.9	4,068.1	4,100.6	4,077.0	4,091.2	4,072.6
Jun	4,111.9	4,042.8	4,143.4	4,071.6	4,157.0	4,083.2	4,131.7	4,068.7
Jul	4,066.0	4,043.5	4,091.5	4,068.2	4,098.7	4,074.8	4,089.0	4,068.8
Aug	4,048.7	4,044.1	4,076.5	4,071.7	4,079.4	4,073.4	4,064.9	4,065.4
Sep	4,054.4	4,049.1	4,075.3	4,071.1	4,073.3	4,070.1	4,060.2	4,061.4
Oct	4,059.1	4,044.0	4,088.1	4,073.9	4,093.7	4,073.8	4,074.4 R	4,054.4 R
Nov	4,082.2	4,049.3	4,107.4	4,075.0	4,108.5	4,076.0	4,080.5	4,048.2
Dec	4,091.9	4,048.0	4,122.3	4,077.9	4,121.2	4,082.6		

### 8. Private Sector Payroll Employment (000)

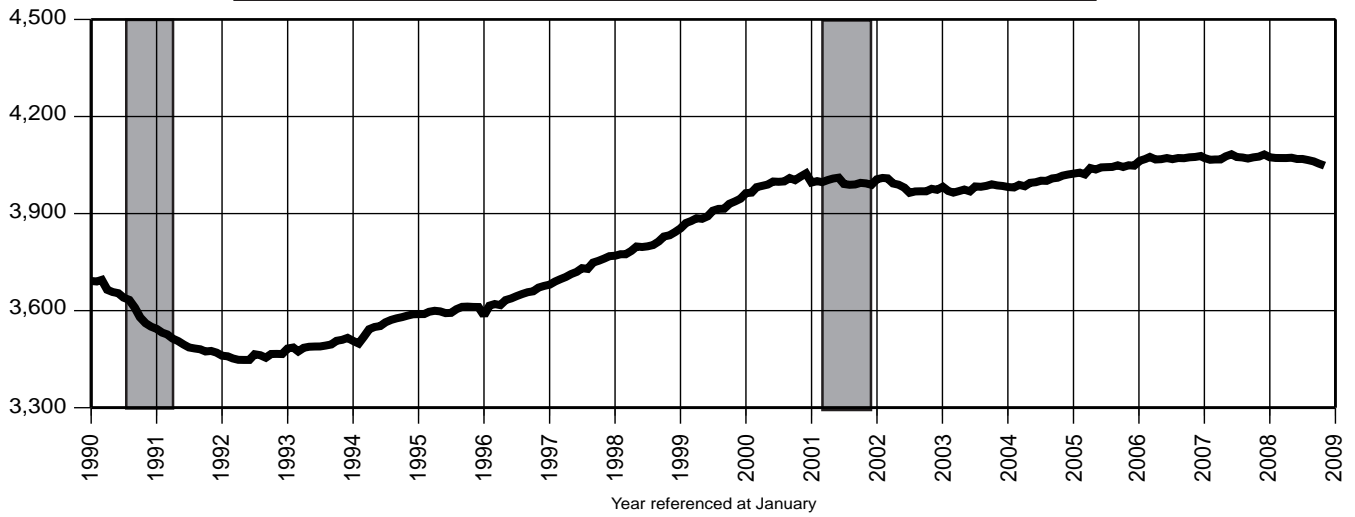
Date	2005		2006		2007		2008	
	Unadj.	Adj.	Unadj.	Adj.	Unadj.	Adj.	Unadj.	Adj.
Jan	3,309.8	3,384.9	3,340.7	3,415.9	3,348.4	3,423.1	3,360.2	3,425.5
Feb	3,302.7	3,386.7	3,336.1	3,421.1	3,332.8	3,418.2	3,345.3	3,423.0
Mar	3,325.3	3,382.4	3,370.0	3,427.8	3,360.8	3,418.9	3,368.8	3,422.9
Apr	3,373.0	3,400.1	3,392.0	3,419.5	3,390.9	3,419.1	3,398.6	3,423.0
May	3,409.0	3,395.7	3,435.5	3,421.1	3,442.8	3,427.7	3,433.5	3,423.6
Jun	3,461.0	3,401.4	3,486.1	3,424.3	3,496.7	3,433.3	3,473.3	3,419.4
Jul	3,450.0	3,402.5	3,469.4	3,421.3	3,476.2	3,427.6	3,465.0	3,419.9
Aug	3,443.0	3,402.6	3,465.5	3,424.9	3,468.0	3,426.4	3,455.4	3,418.8
Sep	3,426.1	3,405.9	3,445.1	3,425.5	3,442.6	3,423.5	3,431.2	3,414.9
Oct	3,409.3	3,400.7	3,433.0	3,425.2	3,438.9	3,426.6	3,420.1 R	3,407.7 R
Nov	3,425.5	3,404.6	3,447.6	3,427.0	3,447.9	3,427.6	3,422.1	3,402.0
Dec	3,435.4	3,402.9	3,462.8	3,430.1	3,460.9	3,433.8		

### 9. Construction Payroll Employment (000)

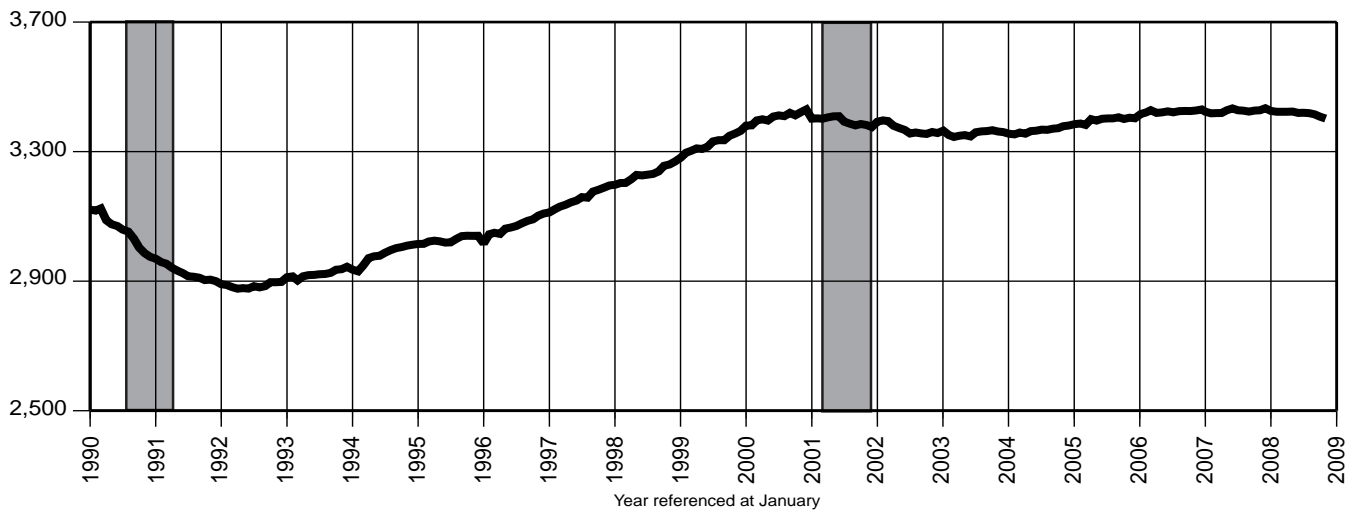
Date	2005		2006		2007		2008	
	Unadj.	Adj.	Unadj.	Adj.	Unadj.	Adj.	Unadj.	Adj.
Jan	155.4	167.4	161.5	173.6	161.2	173.2	158.9	169.3
Feb	151.4	167.0	161.2	176.7	155.4	170.8	154.5	168.9
Mar	154.7	164.5	166.5	176.5	160.7	171.0	157.5	168.0
Apr	166.0	167.8	175.4	176.9	169.7	171.1	164.5	166.9
May	171.6	168.6	178.8	175.5	175.5	172.0	169.5	167.3
Jun	174.8	169.2	181.0	175.2	179.2	173.2	172.2	166.8
Jul	176.6	169.8	181.1	174.5	178.2	171.7	173.5	166.9
Aug	178.0	170.2	182.3	174.5	179.3	171.6	174.5	167.0
Sep	178.5	171.9	181.2	174.7	177.4	171.0	172.7	166.5
Oct	174.7	169.9	178.4	173.9	175.9	171.0	171.1 R	166.2 R
Nov	176.0	172.6	176.8	173.5	174.4	170.8	169.3	165.7
Dec	172.0	171.0	175.3	174.2	171.4	170.1		



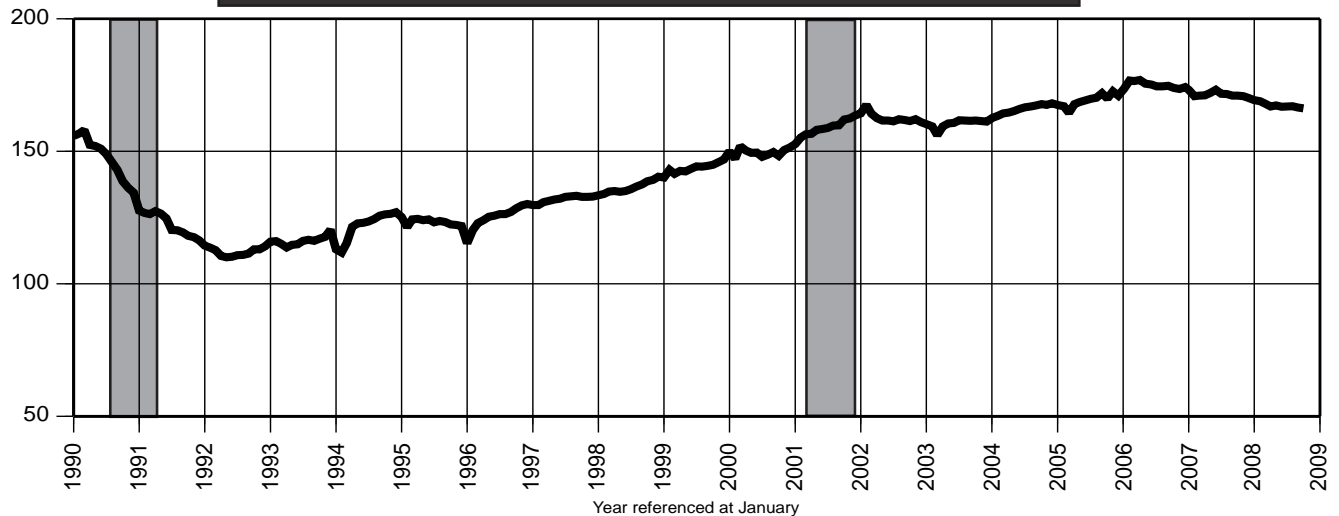
**7. Nonfarm Payroll Employment (000)**



**8. Private Sector Payroll Employment (000)**



**9. Construction Payroll Employment (000)**



# Indicator Series 10-12 Establishment Employment

## 10. Total Manufacturing Payroll Employment (000)

Date	2005		2006		2007		2008	
	Unadj.	Adj.	Unadj.	Adj.	Unadj.	Adj.	Unadj.	Adj.
Jan	330.8	334.5	326.4	329.7	314.5	317.3	307.0	309.7
Feb	331.2	333.7	325.9	328.2	313.5	315.8	306.4	308.7
Mar	332.2	333.2	326.6	327.6	313.5	314.6	307.0	308.3
Apr	330.7	331.9	324.8	326.0	312.8	314.0	305.9	306.9
May	331.3	331.0	325.5	325.4	313.2	313.2	304.3	304.6
Jun	332.9	330.2	326.7	324.2	315.0	312.7	304.2	301.9
Jul	329.0	329.0	323.9	323.6	313.0	312.7	302.3	302.1
Aug	329.6	329.0	323.3	322.6	312.6	311.8	301.8	301.6
Sep	329.9	328.3	322.7	321.4	312.3	311.1	301.0	299.9
Oct	329.2	328.7	321.3	320.7	311.4	310.6	298.5 R	297.7 R
Nov	328.8	328.0	320.5	319.7	311.4	309.9	297.5	296.1
Dec	328.9	327.5	319.4	318.1	311.0	309.7		

## 11. Trade, Transportation & Utilities Payroll Employment (000)

Date	2005		2006		2007		2008	
	Unadj.	Adj.	Unadj.	Adj.	Unadj.	Adj.	Unadj.	Adj.
Jan	870.8	875.7	871.2	876.2	871.2	876.1	870.3	877.3
Feb	862.3	877.8	859.3	875.3	857.7	874.0	858.6	874.2
Mar	864.9	877.6	863.8	877.0	860.6	873.8	861.9	874.7
Apr	868.4	880.0	863.3	875.3	861.6	873.9	863.2	873.3
May	875.7	878.1	872.8	875.0	874.5	876.6	871.4	873.8
Jun	885.6	878.6	881.7	874.3	886.2	878.5	879.6	873.0
Jul	876.7	879.2	872.8	874.8	875.9	877.7	871.4	872.9
Aug	873.6	878.5	870.3	875.1	872.6	877.2	868.4	872.9
Sep	875.4	878.0	871.9	874.6	873.6	876.3	871.0	872.8
Oct	877.1	874.6	878.8	876.5	879.5	875.2	874.3 R	870.1 R
Nov	890.8	873.9	895.6	878.6	894.1	877.2	886.6	869.9
Dec	906.2	875.2	910.5	879.2	908.2	879.9		

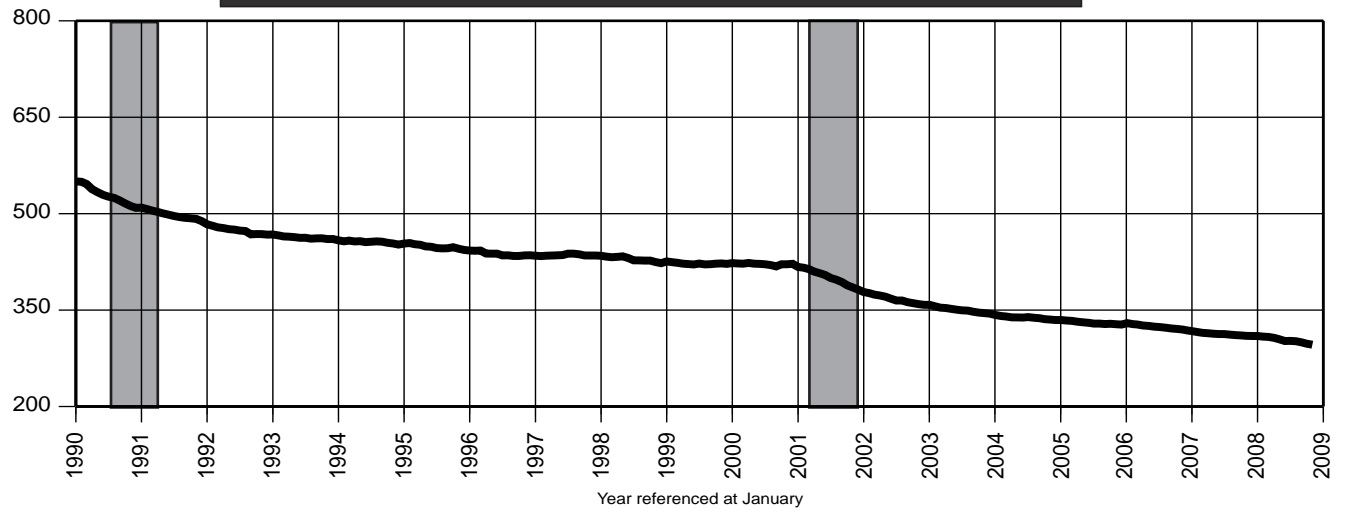
## 12. Information Payroll Employment (000)

Date	2005		2006		2007		2008	
	Unadj.	Adj.	Unadj.	Adj.	Unadj.	Adj.	Unadj.	Adj.
Jan	96.7	97.0	97.4	97.8	96.3	96.7	98.3	98.7
Feb	96.4	96.7	98.1	98.4	97.1	97.4	97.2	97.8
Mar	97.0	96.7	98.2	97.9	97.5	97.2	97.6	97.6
Apr	96.2	96.7	97.0	97.6	97.1	97.7	97.9	98.5
May	96.6	96.8	97.4	97.6	97.4	97.6	98.3	98.5
Jun	97.8	97.3	98.3	97.7	98.1	97.5	99.0	98.6
Jul	97.4	97.2	97.7	97.5	98.1	97.9	98.7	98.7
Aug	97.2	96.8	98.1	97.7	99.2	98.7	99.4	99.2
Sep	96.7	97.2	97.9	98.3	97.7	98.0	98.3	98.6
Oct	96.9	97.3	96.4	96.9	98.0	98.1	98.3	98.4
Nov	97.8	97.5	96.2	95.9	98.6	98.0	98.1	97.5
Dec	98.3	97.7	96.5	95.9	99.1	98.3		

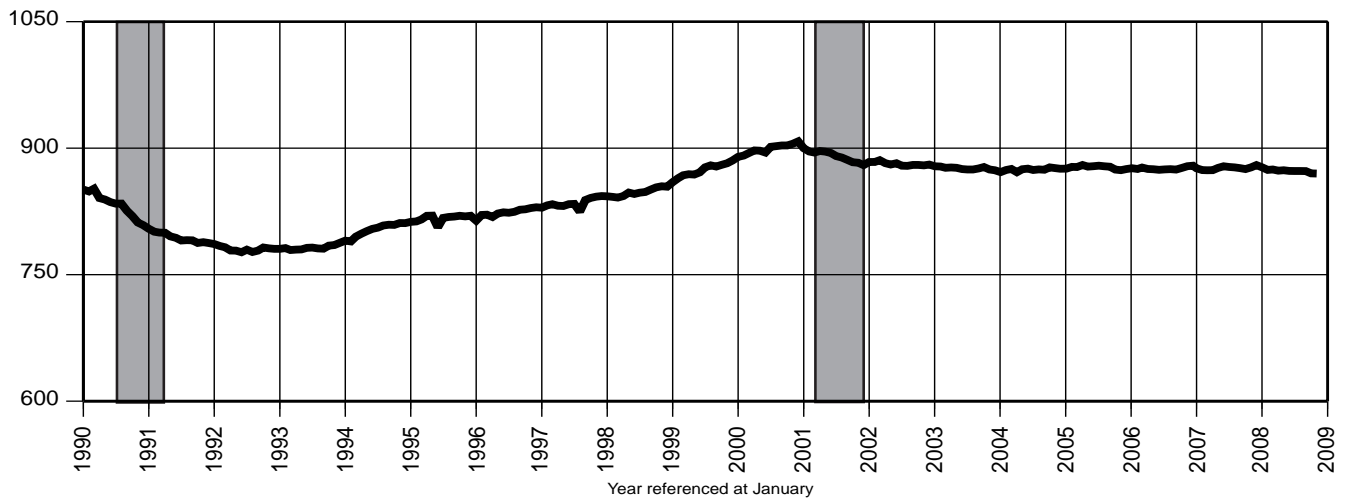
You're viewing an archived copy from the New Jersey State Library.

## Indicator Series 10-12 Establishment Employment

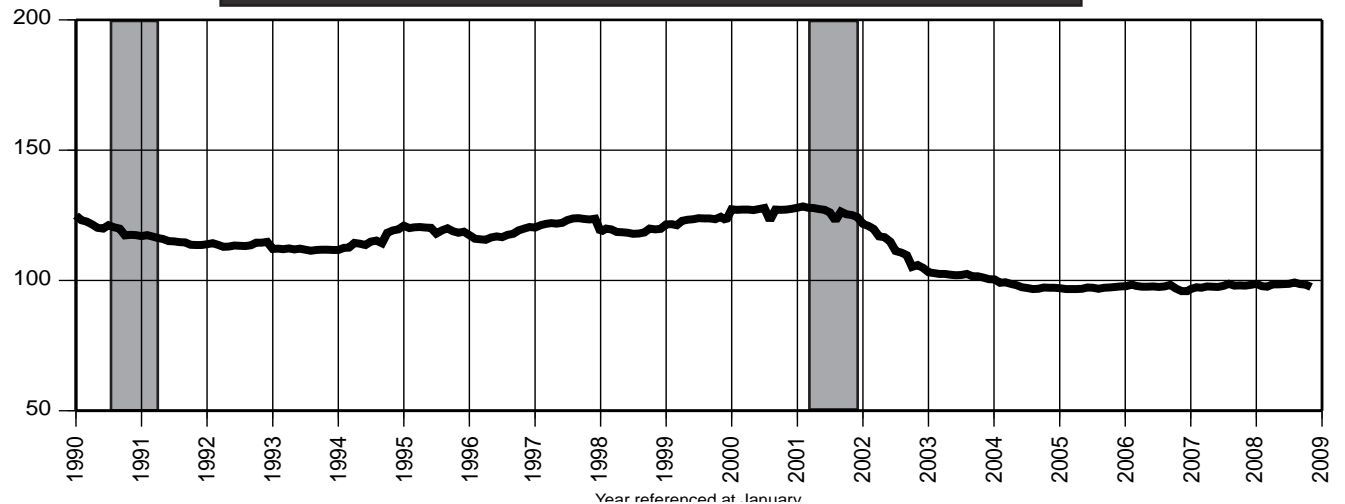
10. Total Manufacturing Payroll Employment (000)



11. Trade, Transportation & Utilities Payroll Employment (000)



12. Information Payroll Employment (000)



### 13. Financial Activities Payroll Employment (000)

Date	2005		2006		2007		2008	
	Unadj.	Adj.	Unadj.	Adj.	Unadj.	Adj.	Unadj.	Adj.
Jan	275.8	278.5	276.8	279.6	274.9	277.7	267.9	269.3
Feb	275.1	278.5	276.5	280.0	274.3	277.7	267.4	269.2
Mar	275.9	278.7	277.4	280.2	274.3	277.0	267.7	269.4
Apr	277.5	279.0	278.4	280.0	274.8	276.4	267.4	268.5
May	278.7	279.0	279.7	279.9	276.0	276.2	267.7	267.8
Jun	281.8	279.4	282.0	279.5	278.7	276.2	269.8	267.8
Jul	284.0	280.1	283.7	279.6	279.0	274.9	268.8	266.3
Aug	284.4	280.7	283.1	279.4	277.9	274.1	268.4	266.2
Sep	281.7	281.3	279.3	278.9	273.7	273.3	264.1	264.4
Oct	279.6	279.8	278.6	278.9	271.4	271.8	263.1R	263.5R
Nov	280.8	280.7	278.4	278.3	270.6	270.9	262.2	262.6
Dec	281.0	280.7	278.6	278.1	270.5	270.2		

### 14. Professional & Business Services Payroll Employment (000)

Date	2005		2006		2007		2008	
	Unadj.	Adj.	Unadj.	Adj.	Unadj.	Adj.	Unadj.	Adj.
Jan	570.0	589.1	577.5	597.1	584.4	604.3	593.0	609.0
Feb	571.5	589.1	582.6	600.8	585.3	603.5	593.5	609.5
Mar	577.0	587.1	591.5	602.2	594.0	604.7	600.5	608.9
Apr	593.0	594.8	597.0	598.7	604.8	606.6	610.7	611.7
May	594.2	592.9	602.4	600.9	610.6	609.0	614.7	613.3
Jun	604.3	595.1	611.9	602.1	620.1	609.9	620.6	612.7
Jul	600.3	593.2	609.8	602.6	617.2	609.9	623.5	616.4
Aug	601.6	592.5	613.7	604.4	620.2	610.8	624.5	615.7
Sep	599.8	593.9	610.5	604.6	615.8	610.1	622.3	615.9
Oct	600.7	594.9	611.3	605.2	615.3	610.9	620.6 R	616.0 R
Nov	600.3	594.2	612.4	606.2	615.3	611.1	618.4	614.1
Dec	597.4	592.5	611.6	606.7	614.5	612.8		

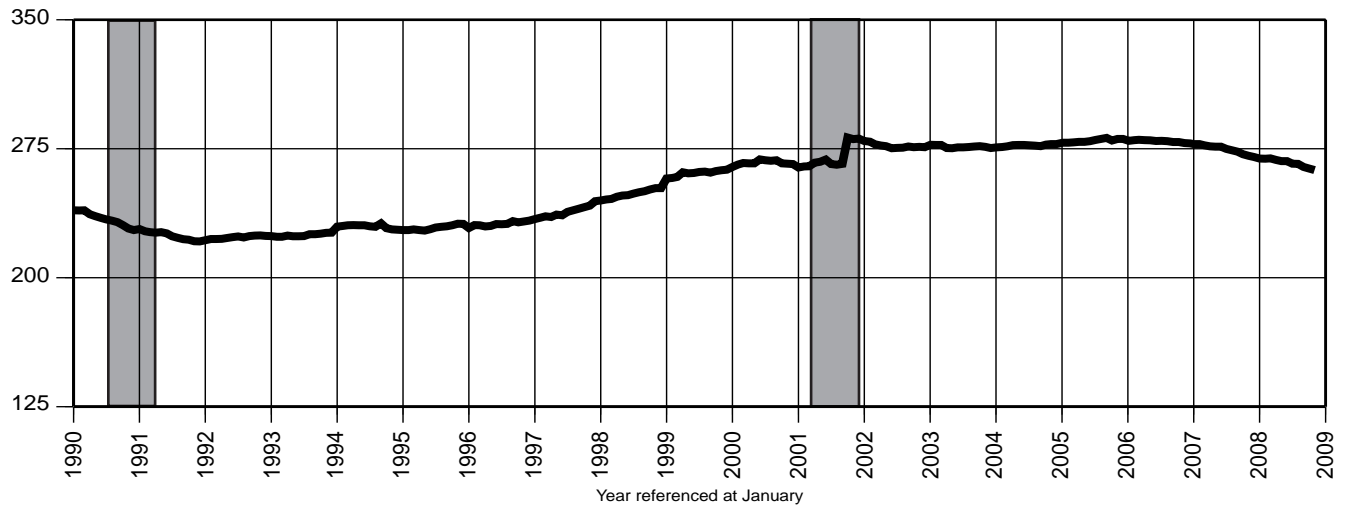
### 15. Education & Health Services Payroll Employment (000)

Date	2005		2006		2007		2008	
	Unadj.	Adj.	Unadj.	Adj.	Unadj.	Adj.	Unadj.	Adj.
Jan	549.3	553.3	560.8	564.7	571.6	575.3	584.3	586.5
Feb	552.9	553.9	563.2	564.2	575.6	576.6	587.4	587.9
Mar	555.3	553.9	567.1	565.3	580.1	578.2	590.4	588.4
Apr	556.9	556.0	566.2	565.5	577.3	576.7	591.6	590.0
May	561.3	557.0	571.3	566.8	583.5	578.9	594.5	590.9
Jun	561.0	557.8	571.5	568.4	581.6	578.5	593.6	591.2
Jul	555.3	559.4	563.9	568.3	574.5	579.1	586.3	590.3
Aug	551.2	559.2	562.2	570.5	570.4	578.8	582.7	590.9
Sep	557.1	560.4	567.8	571.3	577.3	580.8	587.8	591.8
Oct	565.0	563.0	573.2	571.1	585.4	583.8	594.5R	592.9R
Nov	567.6	563.7	576.4	572.5	588.3	584.7	596.9	593.2
Dec	568.1	563.4	579.7	574.8	589.8	585.9		

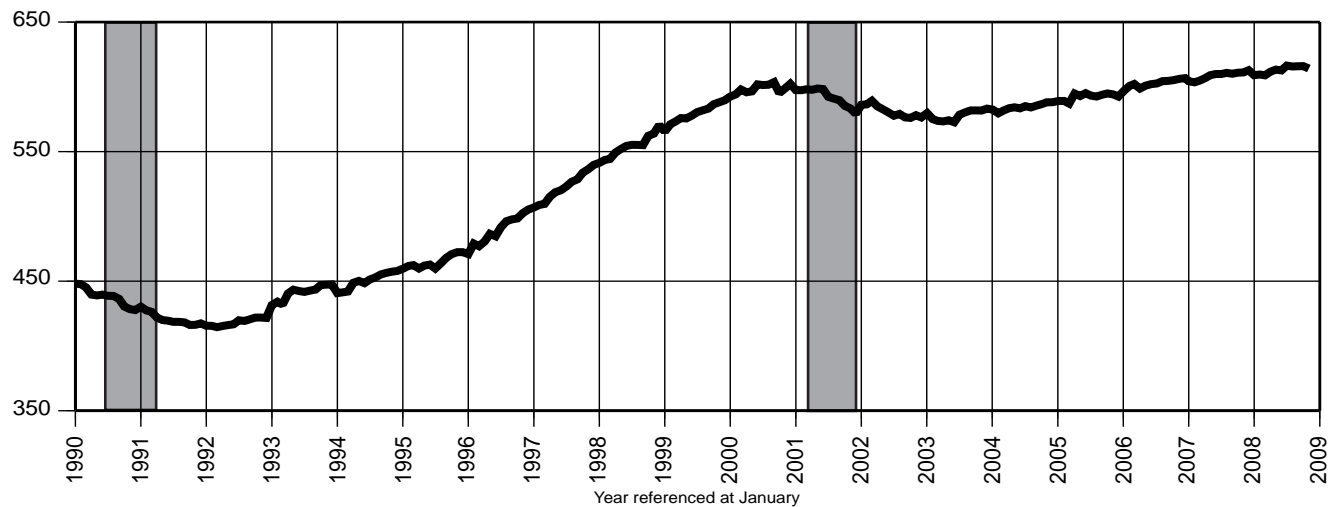
You're viewing an archived copy from the New Jersey State Library.

## Indicator Series 13-15 Establishment Employment

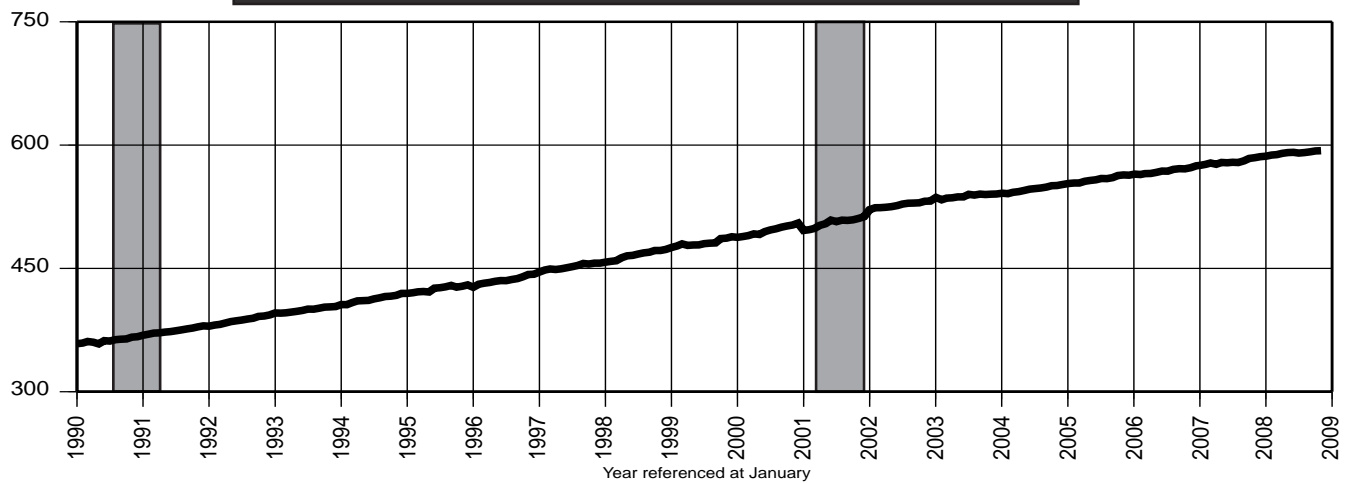
13. Financial Activities Payroll Employment (000)



14. Professional & Business Services Payroll Employment (000)



15. Education & Health Services Payroll Employment (000)



16. Leisure & Hospitality Payroll Employment (000)

Date	2005		2006		2007		2008	
	Unadj.	Adj.	Unadj.	Adj.	Unadj.	Adj.	Unadj.	Adj.
Jan	305.1	331.1	310.7	336.4	313.2	339.1	316.4	339.3
Feb	305.3	331.2	310.8	336.7	312.8	339.0	316.0	340.1
Mar	311.3	332.1	319.0	339.5	318.2	338.8	321.2	341.0
Apr	324.2	334.0	327.5	337.5	327.8	338.2	330.4	340.1
May	338.8	332.9	343.7	337.7	345.4	339.2	344.8	340.0
Jun	359.8	334.0	366.5	339.8	367.7	340.3	363.8	339.8
Jul	367.5	334.5	371.6	338.7	371.4	338.0	369.5	338.5
Aug	364.9	335.1	368.9	339.0	368.3	337.7	365.9	337.8
Sep	348.2	335.0	353.0	339.7	350.3	337.0	347.8	337.9
Oct	327.7	333.1	333.5	339.4	337.3	339.7	333.6R	336.0R
Nov	324.5	334.0	329.5	339.3	330.6	339.6	327.2	336.1
Dec	323.9	334.7	328.4	339.6	330.6	340.8		

17. Consumer Price Index - (CPI-U) (1982 = 100)

Date	US	2006		US	2007		US	2008	
		NY	PA		NY	PA		NY	PA
Jan	198.3	215.9	*	202.416	221.767	*	211.080	229.869	*
Feb	198.7	216.4	209.0	203.499	223.066	213.152	211.693	231.020	220.935
Mar	199.8	218.2	*	205.352	224.551	*	213.528	233.122	*
Apr	201.5	220.2	211.6	206.686	225.780	215.270	214.823	233.822	223.622
May	202.5	221.6	*	207.949	227.146	*	216.632	236.151	*
Jun	202.9	222.6	213.9	208.352	228.258	217.255	218.815	238.580	228.408
Jul	203.5	223.1	*	208.299	228.628	*	219.964	240.273	*
Aug	203.9	224.1	216.4	207.917	228.326	218.692	219.086	240.550	228.337
Sep	202.9	222.9	*	208.490	228.308	*	218.783	240.089	*
Oct	201.8	221.7	211.6	208.936	228.552	218.929	216.573	238.403	225.113
Nov	201.5	220.9	*	210.177	229.504	*	212.425	234.498	*
Dec	201.8	221.3	211.6	210.036	229.395	219.025			

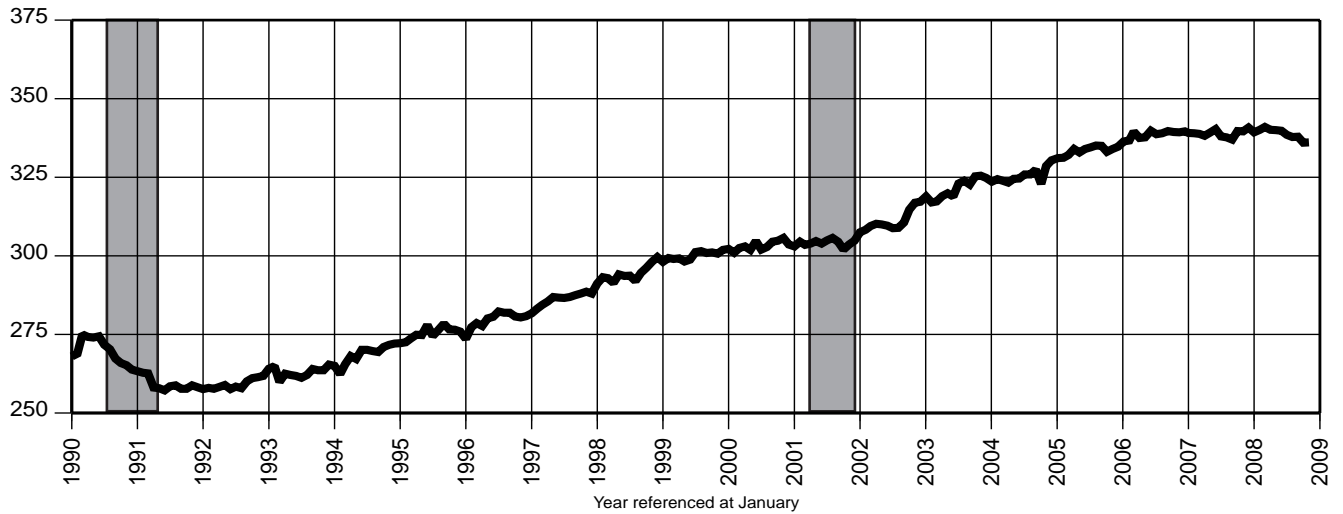
18. Consumer Confidence Index, Middle Atlantic Region

Date	2005		(Seasonally unadjusted) 2006		2007		2008	
Jan	86.7		82.5		91.4		72.2	
Feb	89.0		83.4		94.1		59.6	
Mar	83.9		95.0		92.3		51.9	
Apr	79.2		90.0		98.4		49.7	
May	70.7		83.6		89.8		45.4	
Jun	87.9		86.0		84.3		40.9	
Jul	88.0		81.4		99.1		33.6	
Aug	72.4		74.6		83.8		44.9	
Sep	67.9		90.0		93.7		50.1	
Oct	76.8		97.0		86.8		35.0	R
Nov	77.7		91.6		78.8		44.8	
Dec	83.8		88.6		72.5			

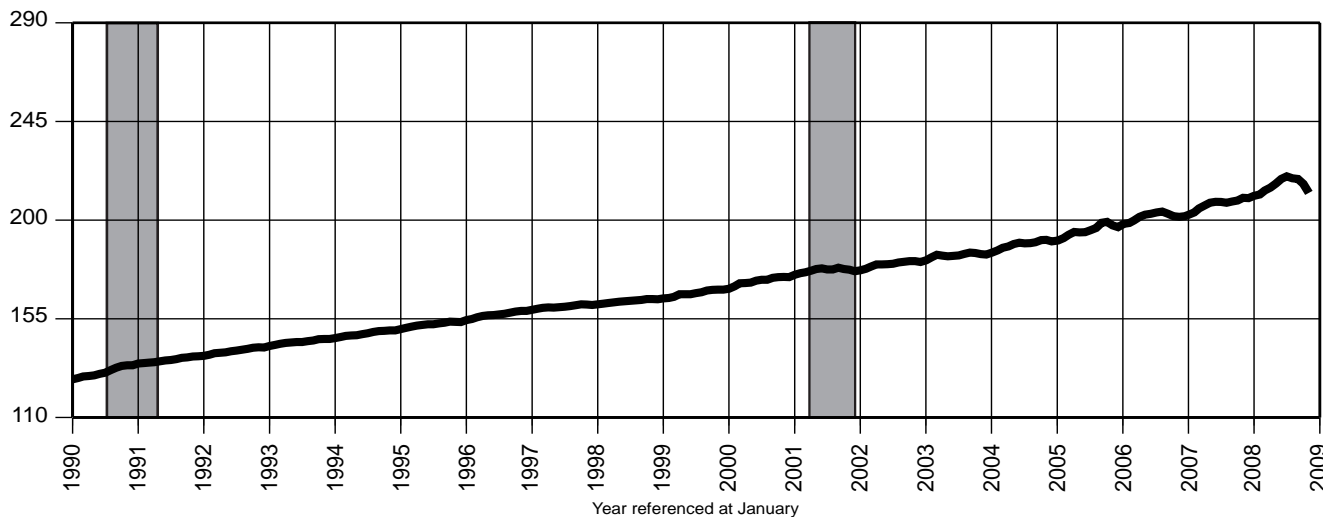


# Indicator Series 16-18 Leisure & Hospitality, CPI and Confidence Index

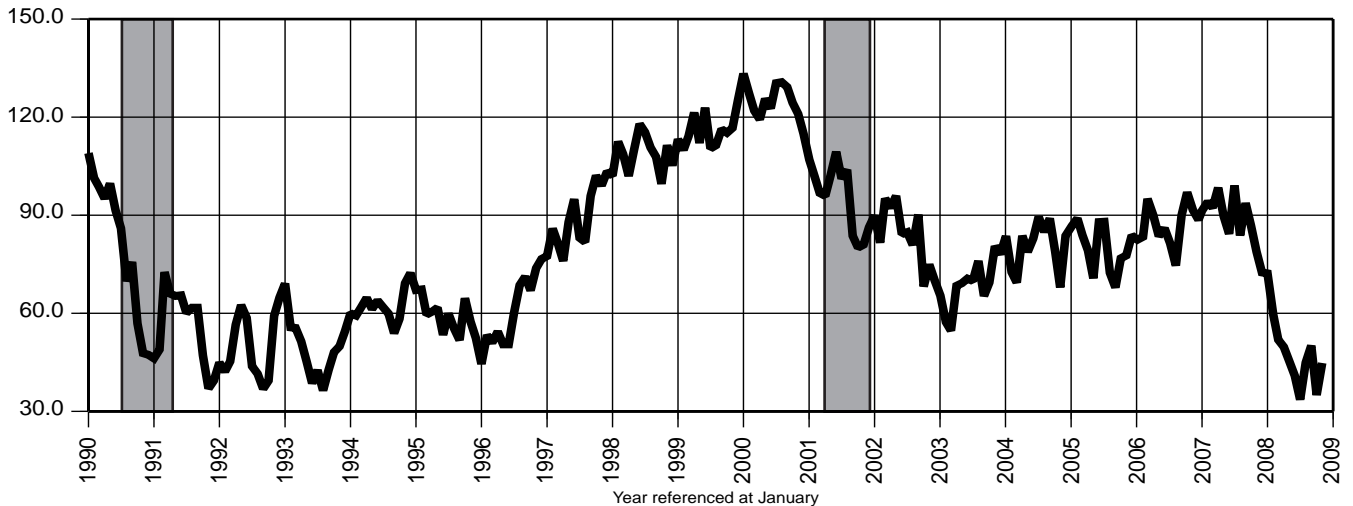
## 16. Leisure & Hospitality Payroll Employment (000)



## 17. Consumer Price Index - (CPI-U) (1982 = 100)



## 18. Consumer Confidence Index, Middle Atlantic Region



RESTRICTIONS: McGraw-Hill monthly construction contract data (series: 19-21) are published by special contract.

REPRINTING AND ELECTRONIC DISSEMINATION OF  
THESE DATA ARE PROHIBITED BY LAW.

RESTRICTIONS: McGraw-Hill monthly construction contract data (series: 19-21) are published by special contract.

REPRINTING AND ELECTRONIC DISSEMINATION OF THESE DATA ARE PROHIBITED BY LAW.

You're viewing an archived copy from the New Jersey State Library

## Indicator Series 22-24 Private Residential Building Permits

### 22. Total Private Dwelling Units Authorized by Building Permits

(Seasonality not statistically significant)

Date	2005	2006	2007	2008	
	Unadj.	Unadj.	Unadj.	Unadj.	
Jan	2,881	2,548	2,077	1,674	R
Feb	2,376	2,502	1,648	1,332	
Mar	2,964	2,989	1,871	2,066	R
Apr	3,805	2,654	2,100	2,425	R
May	4,329	3,044	1,992	1,682	R
Jun	3,830	3,314	2,759	2,465	
Jul	3,006	4,516	1,905	1,420	R
Aug	4,471	2,675	3,084	1,240	R
Sep	2,784	2,850	1,896	1,464	R
Oct	2,936	2,030	2,283	1,174	
Nov	2,884	3,196	2,133		
Dec	2,367	2,024	1,652		

### 23. Private Single-Family Dwelling Units Authorized by Building Permits

Date	2005		2006		2007		2008	
	Unadj.	Adj.	Unadj.	Adj.	Unadj.	Adj.	Unadj.	Adj.
Jan	1,458	1,765	1,592	1,839	1,084	1,216	801 R	883 R
Feb	1,611	2,029	1,301	1,641	953	1,200	659	790
Mar	2,104	1,965	1,766	1,644	1,137	1,104	807 R	820 R
Apr	1,952	2,038	1,457	1,562	1,109	1,137	1,006 R	1,001 R
May	1,963	1,859	1,674	1,539	1,264	1,140	811 R	754 R
Jun	1,934	1,616	1,635	1,356	1,328	1,158	753	650
Jul	1,966	1,895	1,626	1,577	1,183	1,104	780 R	699 R
Aug	2,159	1,890	1,536	1,321	1,552	1,324	762 R	701 R
Sep	1,888	1,839	1,184	1,223	901	966	735 R	745 R
Oct	1,907	1,848	1,254	1,185	937	873	740	678
Nov	1,727	1,829	1,073	1,121	879	917		
Dec	1,607	1,833	1,032	1,221	750	891		

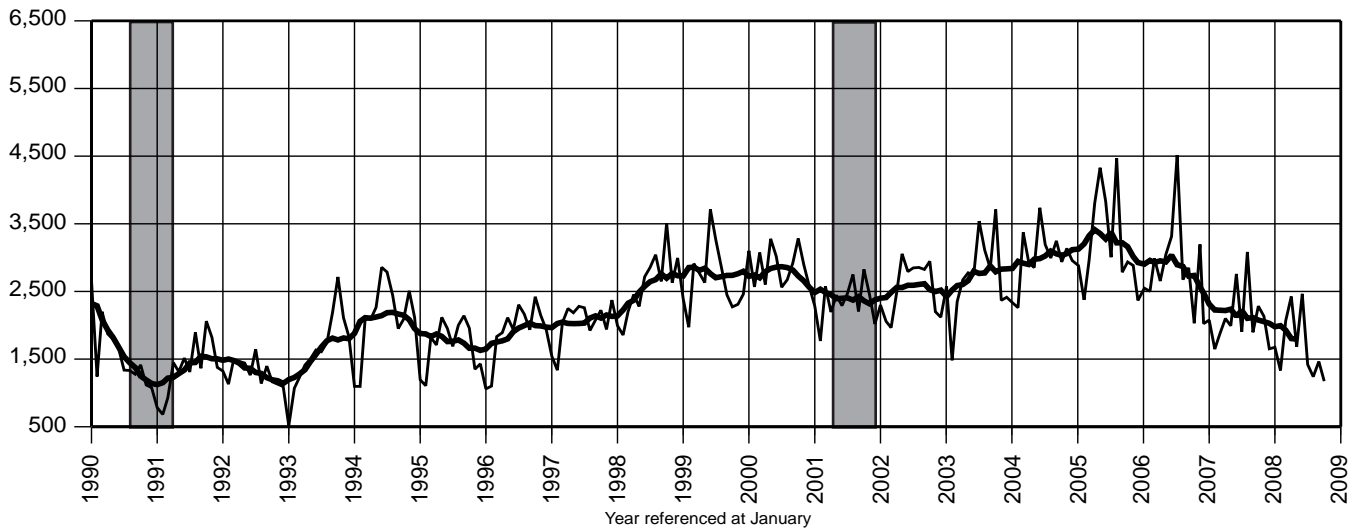
### 24. Private Multi-Dwelling Units Authorized by Building Permits

(Seasonality not statistically significant)

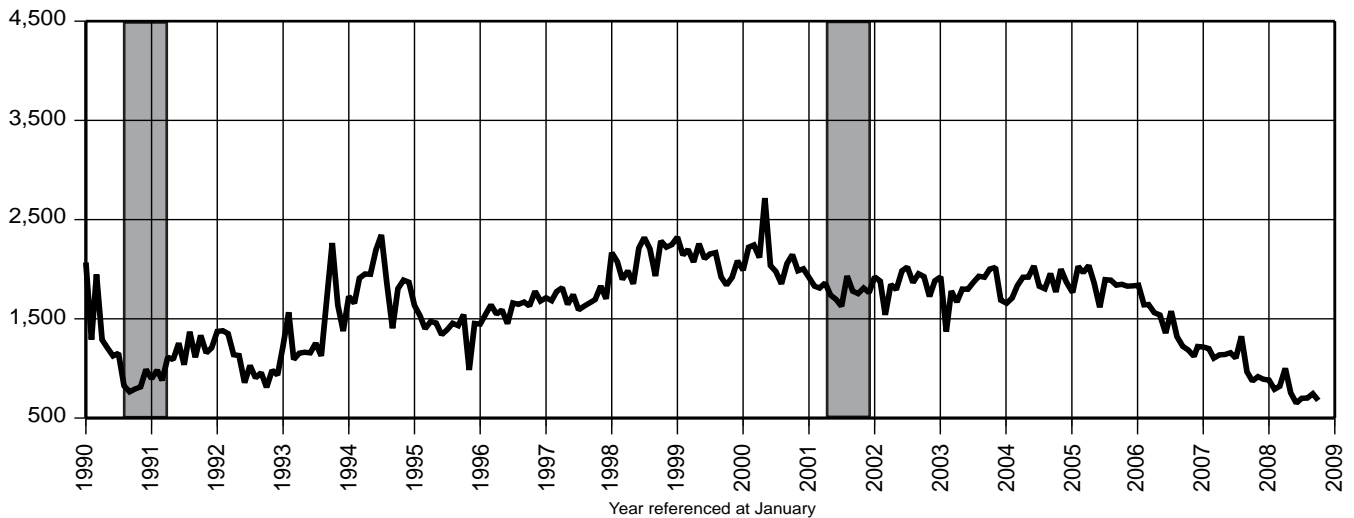
Date	2005	2006	2007	2008
	Unadj.	Unadj.	Unadj.	Unadj.
Jan	1,108	471	759	750
Feb	544	924	379	571
Mar	462	694	514	1,164
Apr	1,379	876	767	1,192
May	1,940	950	527	779
Jun	1,369	1,195	1,137	1,607
Jul	642	2,250	509	547
Aug	1,931	814	1,184	438
Sep	529	1,306	821	656 R
Oct	589	371	1,013	347
Nov	763	1,844	1,055	
Dec	450	719	655	

**22. Total Private Dwelling Units Authorized by Building Permits**

(With 12 month moving average)

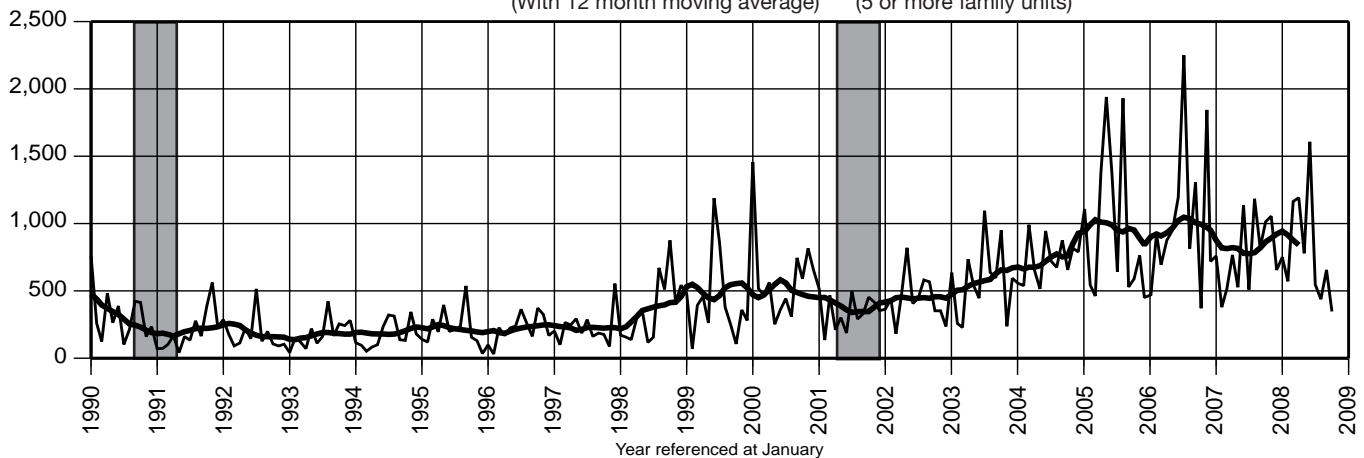


**23. Private Single-Family Dwelling Units Authorized by Building Permits**



**24. Private Multi-Dwelling Units Authorized by Building Permits**

(With 12 month moving average) (5 or more family units)



**25. Total New Vehicle Registrations \***

Date	<b>2005</b>		<b>2006</b>		<b>2007</b>		<b>2008</b>	
	Unadj.	Adj.	Unadj.	Adj.	Unadj.	Adj.	Unadj.	Adj.
Jan	44,021	53,436	41,772	50,882	41,273	50,172	42,865	51,998
Feb	44,480	51,077	45,584	52,398	43,966	50,351	44,480	50,941
Mar	48,982	44,755	56,014	51,447	53,249	49,078	53,411R	49,350R
Apr	61,458	57,824	51,459	47,938	54,747	51,107	49,335R	45,923R
May	55,821	48,680	59,073	51,451	60,346	52,677	54,719R	47,600R
Jun	61,951	55,671	55,134	49,488	53,686	48,140	51,460	46,115
Jul	63,318	58,696	55,377	50,886	55,701	50,871	47,876R	43,557R
Aug	57,416	52,589	56,929	51,812	56,233	51,123	48,474R	44,039R
Sep	47,272	48,389	45,923	47,783	48,643	51,069	41,547 R	43,819R
Oct	43,308	47,278	46,191	50,366	47,304	51,365	33,729	36,649
Nov	45,419	51,032	43,940	49,427	45,579	51,470		
Dec	48,023	51,689	48,275	51,748	47,243	50,532		

**26. New Passenger Car Registrations**

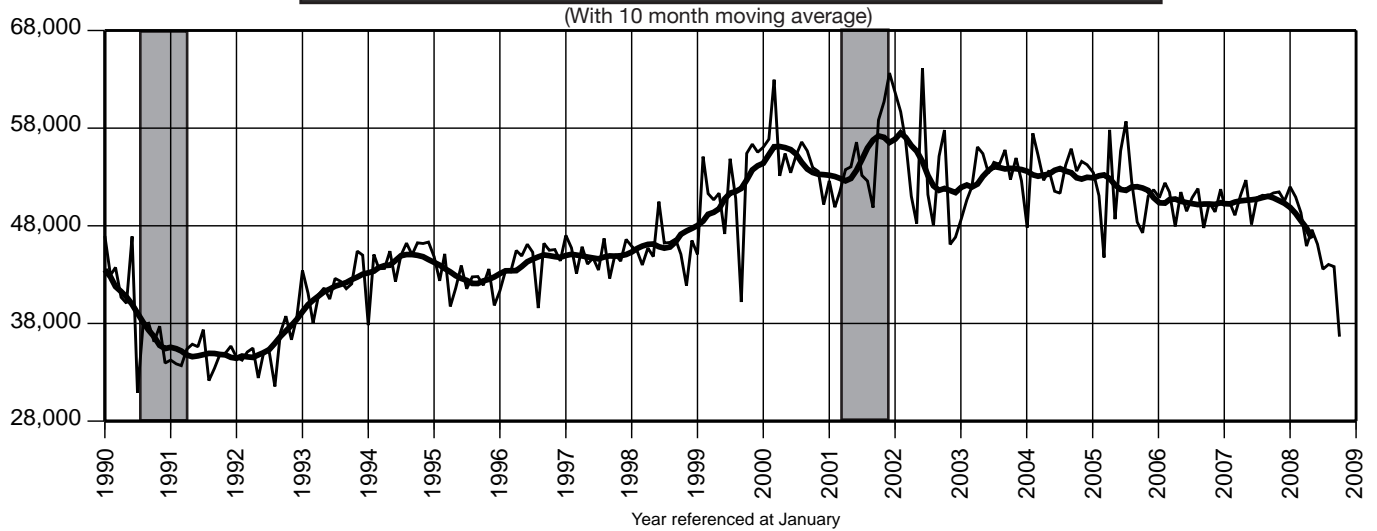
Date	<b>2005</b>		<b>2006</b>		<b>2007</b>		<b>2008</b>	
	Unadj.	Adj.	Unadj.	Adj.	Unadj.	Adj.	Unadj.	Adj.
Jan	21,826	26,568	21,401	26,194	21,644	26,595	21,753	26,776
Feb	21,283	25,365	22,890	27,321	22,089	26,295	23,507	27,925
Mar	24,946	22,457	29,499	26,714	28,814	26,196	30,455R	27,804R
Apr	31,814	29,046	29,158	26,423	29,977	27,117	28,417R	25,629R
May	28,982	24,713	32,664	27,750	33,583	28,493	33,232	28,139
Jun	30,421	26,333	29,891	26,058	29,219	25,523	30,262	26,529
Jul	29,165	26,936	29,260	26,784	29,372	26,769	28,525	25,935
Aug	29,540	26,874	29,876	27,094	29,281	26,562	28,044R	25,451R
Sep	25,622	26,572	23,999	25,252	25,142	26,644	23,304R	24,724R
Oct	23,160	25,813	23,406	26,114	24,202	26,891	19,232	21,332
Nov	23,722	26,975	22,517	25,545	24,277	27,610		
Dec	23,902	26,950	24,301	27,217	23,635	26,386		

**27. New Light Truck/Van Registrations**

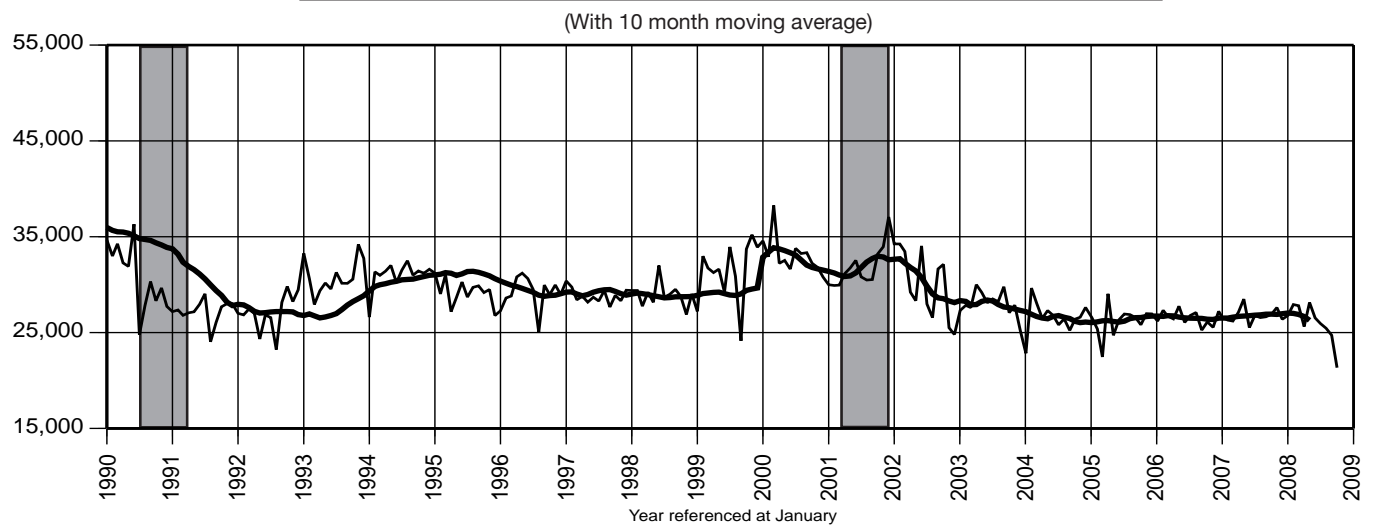
Date	<b>2005</b>		<b>2006</b>		<b>2007</b>		<b>2008</b>	
	Unadj.	Adj.	Unadj.	Adj.	Unadj.	Adj.	Unadj.	Adj.
Jan	22,195	26,869	20,371	24,688	19,629	23,578	21,112	25,221
Feb	23,197	25,712	22,694	25,077	21,877	24,056	20,973	23,017
Mar	24,036	22,297	26,515	24,733	24,435	22,882	22,956	21,546
Apr	29,644	28,778	22,301	21,515	24,770	23,990	20,918R	20,294R
May	26,839	23,967	26,409	23,700	26,763	24,184	21,487R	19,461R
Jun	31,530	29,339	25,243	23,430	24,467	22,617	21,198	19,586
Jul	34,153	31,760	26,117	24,103	26,329	24,102	19,351R	17,622R
Aug	27,876	25,715	27,053	24,718	26,952	24,561	20,430R	18,588R
Sep	21,650	21,817	21,924	22,530	23,501	24,424	18,243R	19,095R
Oct	20,148	21,465	22,785	24,252	23,102	24,474	14,497	15,314
Nov	21,697	24,057	21,423	23,882	21,302	23,860		
Dec	24,121	24,738	23,974	24,531	23,608	24,146		



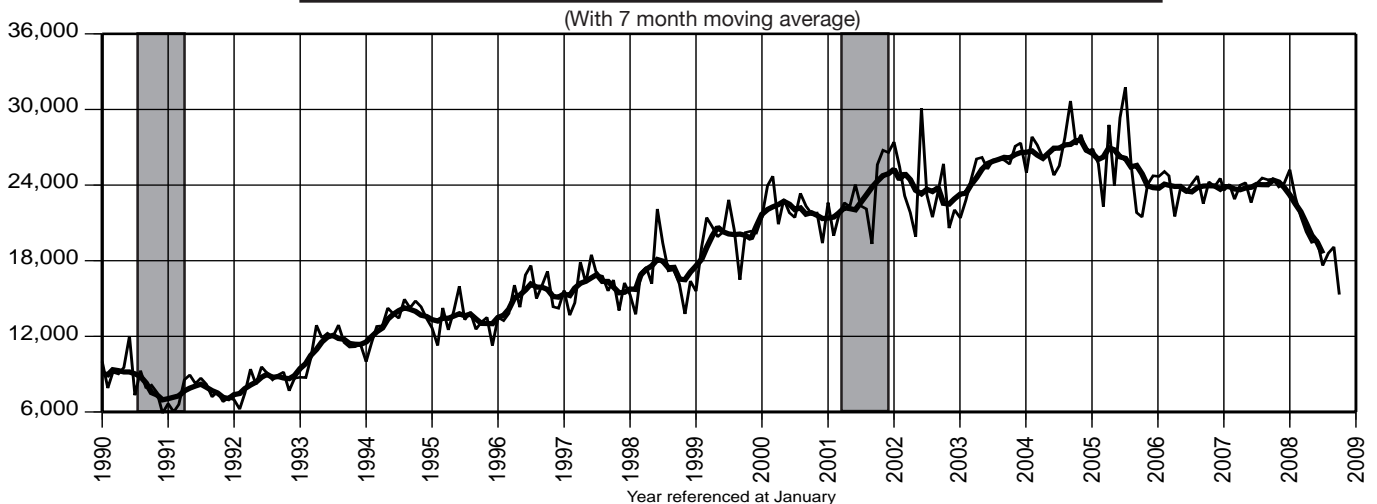
### 25. Total New Vehicle Registrations\*



### 26. New Passenger Car Registrations



### 27. New Light Truck/Van Registrations



\*Includes only new passenger car and light truck/van registrations

**28. Weeks Claimed & Insured Unemployment Rate**

Date	2005		2006		2007		2008	
	WA	IUR	WA	IUR	WA	IUR	WA	IUR
Jan	116.2	3.1	108.5	2.8	109.5	2.8	116.2	3.0
Feb	117.0	3.1	105.8	2.8	111.3	2.9	114.4	2.9
Mar	117.0	3.1	105.2	2.7	112.0	2.9	117.3	3.0
Apr	113.0	3.0	104.9	2.7	112.6	2.9	119.2	3.1
May	113.3	3.0	105.7	2.7	112.2	2.9	124.8	3.2
Jun	112.6	3.0	105.1	2.7	110.0	2.8	124.9	3.2
Jul	112.3	2.9	111.1	2.9	112.5	2.9	126.5	3.2
Aug	111.6	2.9	109.9	2.8	111.6	2.9	129.8	3.3
Sep	110.0	2.9	110.1	2.9	111.5	2.9	139.0	3.6
Oct	110.4	2.9	108.7	2.8	112.6	2.9	149.7	3.8
Nov	108.6	2.8	110.1	2.8	113.5	2.9	160.9	4.1
Dec	109.1	2.9	109.4	2.8	114.7	2.9		

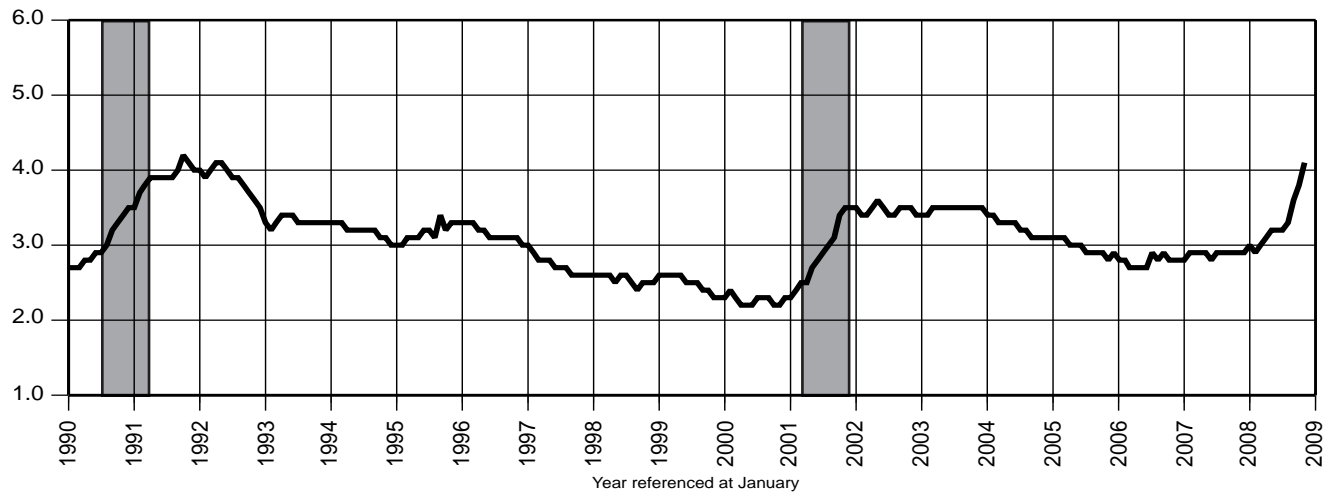
**29. Initial Claims-Weekly Average**

Date	2005		2006		2007		2008	
	Unadj.	Adj.	Unadj.	Adj.	Unadj.	Adj.	Unadj.	Adj.
Jan	14,797	10,886	13,034	9,519	13,850	10,244	13,768	10,214
Feb	10,123	10,290	9,451	9,664	10,515	10,784	10,184	10,138
Mar	9,390	11,315	7,927	9,743	8,609	10,516	10,260	12,564
Apr	9,334	9,156	10,564	10,332	11,080	10,639	10,163	9,891
May	8,020	10,253	7,638	9,975	8,087	10,627	8,653	11,387
Jun	12,260	10,325	12,675	10,464	12,320	10,272	13,684	11,228
Jul	9,826	10,214	10,521	10,746	10,299	10,403	10,839	11,081
Aug	8,231	10,029	8,617	10,483	8,600	10,557	9,691	11,920
Sep	7,885	10,035	7,736	10,056	8,138	10,643	10,258	13,072
Oct	9,212	10,960	8,535	10,045	9,136	10,850	11,748	14,118
Nov	9,881	9,864	10,883	10,720	11,304	10,932	16,083	15,746
Dec	14,921	10,507	13,813	9,889	14,785	10,474		

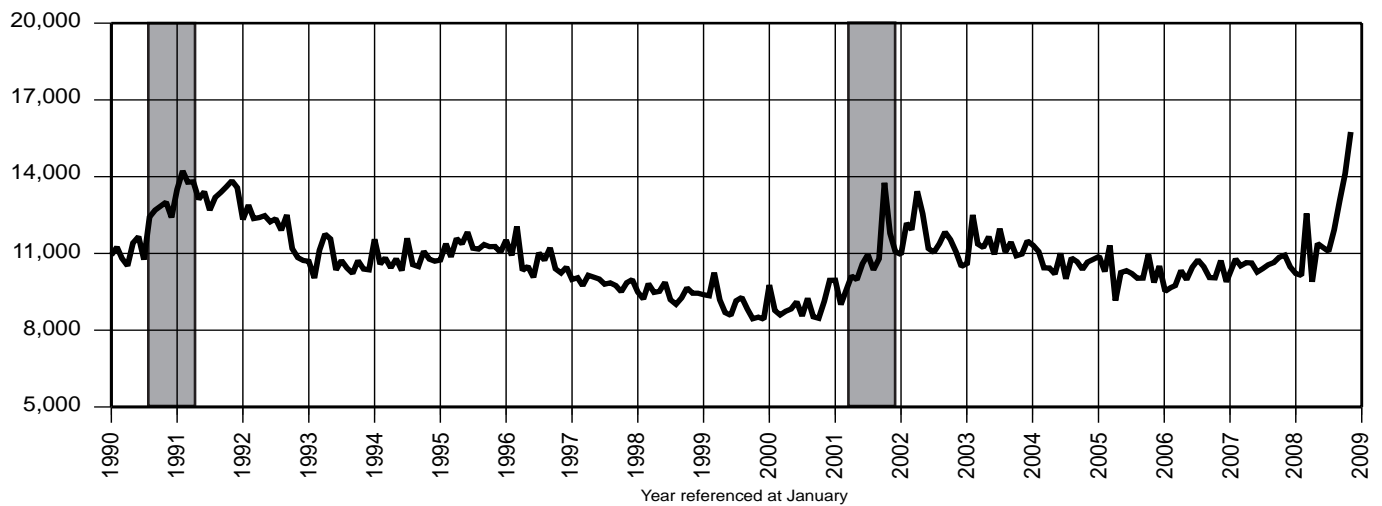
**30. Unemployment Insurance Exhaustions**

Date	2005	2006	2007	2008
	Unadj.	Unadj.	Unadj.	Unadj.
Jan	13,490	13,638	13,845	12,987
Feb	11,462	10,404	10,443	10,694
Mar	13,935	11,647	11,335	13,131
Apr	12,398	11,352	12,919	13,650
May	13,358	12,753	12,807	11,961
Jun	11,448	10,096	10,064	12,531
Jul	12,686	12,361	13,085	14,466
Aug	13,102	10,841	10,486	12,481
Sep	9,837	9,439	10,014	14,953
Oct	11,763	11,752	12,248	13,695
Nov	11,598	9,862	9,909	13,103
Dec	11,072	10,409	11,961	

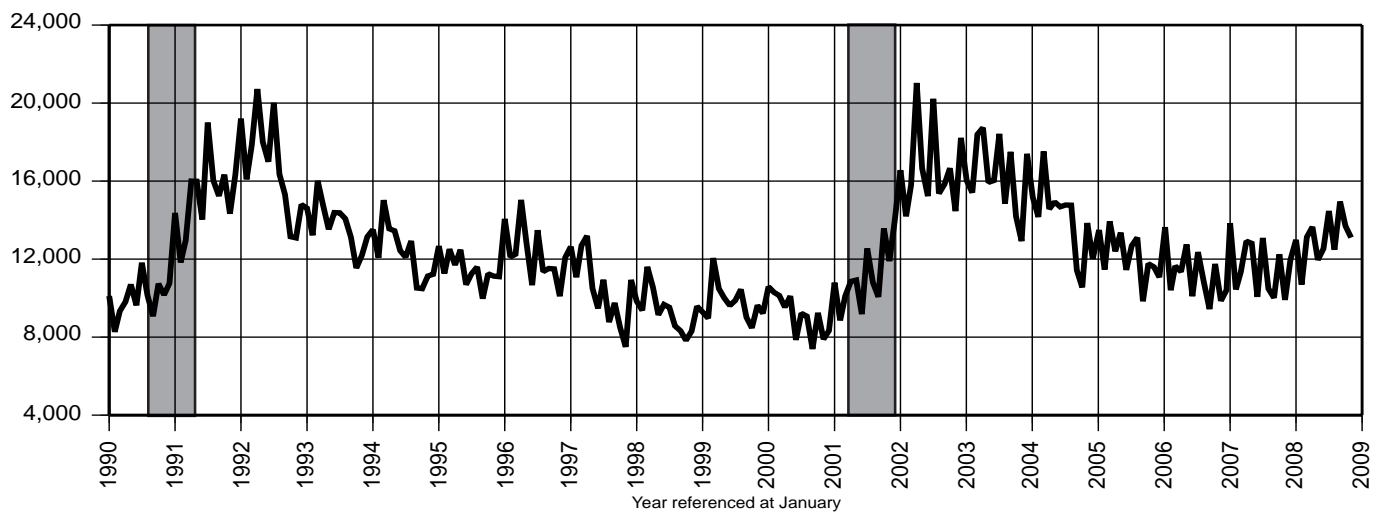
### 28. Insured Unemployment Rate



### 29. Initial Claims-Weekly Average



### 30. Unemployment Insurance Exhaustions



**Indicator Series 1 to 30****Annual Averages 1997 - 2007 (000)**

Indicator Series	1997	1998	1999	2000	2001	2002	2003	2004	2005	2006	2007
1 Civilian Labor Force (000)	4,257.4	4,242.4	4,284.6	4,287.8	4,302.3	4,370.8	4,363.9	4,373.0	4,431.6	4,492.8	4,466.3
2 Resident Employment (000)	4,031.0	4,047.1	4,092.7	4,130.3	4,117.5	4,117.3	4,108.4	4,157.5	4,232.9	4,283.6	4,276.6
3 Resident Unemployment (000)	226.4	195.3	191.8	157.5	184.8	253.5	255.5	215.5	198.7	209.2	189.7
4 Labor Force Particip. Rate (%)	67.6	66.8	67.0	66.6	66.2	66.7	66.1	65.8	66.4	66.9	66.2
5 Employment/Pop. Rate (%)	64.0	63.7	64.0	64.1	66.3	62.6	62.2	62.6	63.4	63.8	63.4
6 Unemployment Rate (%)	5.3	4.6	4.5	3.7	4.3	5.8	5.9	4.9	4.5	4.7	4.2
7 Nonfarm Payroll Emp. (000)	3,724.5	3,801.3	3,901.1	3,994.5	3,997.2	3,983.9	3,978.8	3,999.1	4,039.1	4,071.0	4,073.8
8 Priv. Sec. Nonfarm Emp. (000)	3,154.3	3,229.6	3,323.5	3,405.7	3,394.6	3,370.4	3,356.9	3,365.7	3,397.5	3,423.7	3,425.6
9 Construction Emp. (000)	131.8	136.1	143.6	149.6	158.8	162.6	160.5	165.9	169.1	175.0	171.5
10 Manufacturing Emp. (000)	435.4	429.4	422.5	421.6	401.2	367.5	350.4	338.2	330.4	323.9	312.9
11 Trade, Transportation and Utilities Emp. (000)	834.6	847.6	873.7	899.0	890.7	881.4	876.2	874.7	877.3	876.0	876.3
12 Information Emp. (000)	122.5	118.9	123.0	126.9	126.4	113.2	102.0	98.0	97.1	97.4	97.9
13 Financial Activities Emp. (000)	238.2	248.7	260.8	266.9	269.8	276.7	276.2	276.9	279.7	279.4	274.7
14 Professional and Business Services Emp. (000)	522.4	554.0	579.1	598.5	592.5	581.1	578.2	584.5	592.5	602.7	608.1
15 Education and Health Services Emp. (000)	451.8	466.1	480.9	495.8	505.4	527.1	538.0	546.4	558.4	568.6	579.6
16 Leisure & Hospitality Emp. (000)	286.2	294.2	300.0	303.3	304.2	311.0	321.4	325.5	333.4	338.6	339.5
17 CPI-U for the US ('82-'84=100)	160.5	163.0	166.6	172.2	177.1	179.9	184.0	188.9	195.3	201.6	207.3
18 Mid-Atl. Consumer Conf. Index	89.1	108.6	108.6	125.1	95.8	84.0	68.7	80.4	80.3	87.0	88.8
19 Total Const. Contracts (\$Mil.)	697.6	746.0	800.6	911.7	954.2	952.2	984.0	932.4	1,199.1	1,137.7	1,008.9
20 Resid. Const. Contracts (\$Mil.)	218.8	284.1	309.4	319.9	323.8	327.2	369.8	412.0	498.8	462.1	336.9
21 Nonres. Const. Contracts (\$Mil.)	301.5	352.5	382.5	439.5	418.1	409.9	425.4	361.6	478.5	420.5	390.9
22 Total Dwelling Units (No.) - F	2,335	2,612	2,665	2,880	2,356	2,538	2,715	2,995	3,219	2,862	2,117
23 Single-Fam. Dwell. Units (No.) - F	1,956	2,122	2,094	2,103	1,793	1,864	1,820	1,870	1,856	1,428	1,090
24 Multi-Fam. Dwell. Units (No.) - F	276	374	424	515	347	435	580	728	976	1,035	777
25 Tot. New Vehicle Regis. (No.)	44,797	45,884	50,990	55,301	54,624	53,865	53,584	53,510	51,784	50,473	50,664
26 New Passenger Car Regis. (No.)	28,748	29,047	31,201	33,120	31,667	30,183	28,149	26,631	26,199	26,572	26,770
27 New Lt. Truck/Van Regis. (No.)	16,049	16,837	19,790	22,182	22,957	23,683	25,435	26,879	25,591	23,901	23,895
28 Wks. Claimed Wkly. Avg. (000)	95.3	90.2	90.8	84.3	108.4	132.4	130.9	122.6	112.9	107.9	112.0
Insured Unemp. Rate (%)	2.8	2.6	2.5	2.3	2.9	3.5	3.5	3.2	3.0	2.8	2.9
29 Initial Claims Wkly. Avg. (No.)	9,911	9,454	9,003	9,056	10,637	11,595	11,331	10,730	10,323	10,116	10,560
30 Exhaustions (No.)	104,197	9,360	9,757	9,138	11,136	16,686	16,317	14,034	12,179	11,213	11,593

Notes: See page S-32 for data sources. Data shown using latest available benchmarks. For Dwelling Unit data, "F" = Final. Monthly revisions to Series 19-21 are published by special contract with McGraw-Hill Construction; reprinting is prohibited by law.

## Employment Data

### New Jersey Nonfarm Payroll Employment (000)

(seasonally adjusted)

	2007		2008										
NAICS Industry	Nov	Dec	Jan	Feb	Mar	Apr	May	Jun	Jul	Aug	Sep	Oct	Nov
Total Nonfarm (1)*	4,076.0	4,082.6	4,074.0	4,071.9	4,071.7	4,071.6	4,072.6	4,068.7	4,068.8	4,065.4	4,061.4	4,054.4	4,048.2
Total Private Sector*	3,427.6	3,433.8	3,425.5	3,423.0	3,422.9	3,423.0	3,423.6	3,419.4	3,419.9	3,418.8	3,414.9	3,407.7	3,402.0
Goods Producing*	482.3	481.4	480.6	479.1	477.9	475.5	473.6	470.4	470.7	470.3	468.1	465.6	463.4
Natural Resources and Mining**	1.6	1.6	1.6	1.5	1.6	1.7	1.7	1.7	1.7	1.7	1.7	1.7	1.6
Construction	170.8	170.1	169.3	168.9	168.0	166.9	167.3	166.8	166.9	167.0	166.5	166.2	165.7
Manufacturing*	309.9	309.7	309.7	308.7	308.3	306.9	304.6	301.9	302.1	301.6	299.9	297.7	296.1
Durable Goods	137.2	137.3	137.7	136.6	136.4	135.5	134.4	132.8	132.6	132.8	131.6	130.5	129.6
Non-Durable Goods	172.7	172.4	172.0	172.1	171.9	171.4	170.2	169.1	169.5	168.8	168.3	167.2	166.5
Service-Providing*	3,593.7	3,601.2	3,593.4	3,592.8	3,593.8	3,596.1	3,599.0	3,598.3	3,598.1	3,595.1	3,593.3	3,588.8	3,584.8
Private Service-Providing*	2,945.3	2,952.4	2,944.9	2,943.9	2,945.0	2,947.5	2,950.0	2,949.0	2,949.2	2,948.5	2,946.8	2,942.1	2,938.6
Trade, Transportation, & Utilities*	877.2	879.9	877.3	874.2	874.7	873.3	873.8	873.0	872.9	872.9	872.8	870.1	869.9
Wholesale Trade	232.9	232.9	232.1	231.3	231.1	230.4	230.9	231.4	231.7	231.1	230.5	230.1	230.8
Retail Trade	467.8	467.8	466.5	464.9	465.7	464.6	465.0	464.5	463.8	464.1	464.0	462.7	461.5
Trans., Warehousing, and Utilities	176.5	179.2	178.7	178.0	177.9	178.3	177.9	177.1	177.4	177.7	179.3	177.3	177.6
Information	98.0	98.3	98.7	97.8	97.6	98.5	98.5	98.6	98.7	99.2	98.6	98.4	97.5
Financial Activities*	270.9	270.2	269.3	269.2	269.4	268.5	267.8	267.8	266.3	266.2	264.4	263.5	262.6
Finance and Insurance	212.5	211.9	211.8	211.7	211.7	211.1	210.2	209.9	209.1	208.6	207.1	206.1	205.0
Real Estate/Rental & Leasing	58.4	58.3	57.5	57.5	57.7	57.4	57.6	57.9	57.2	57.6	57.3	57.4	57.6
Prof. and Business Services*	611.1	612.8	609.0	609.5	608.9	611.7	613.3	612.7	616.4	615.7	615.9	616.0	614.1
Prof., Sci., & Tech. Services	286.7	288.2	288.4	288.9	288.7	289.3	289.8	289.7	290.9	289.5	288.9	290.6	289.4
Mgmt. of Companies & Enterprises	66.7	66.6	66.1	66.1	66.3	65.8	65.8	65.9	66.0	66.3	66.4	67.0	66.5
Adm/Support, Waste Mgt/ Remed. Svs.	257.7	258.0	254.5	254.5	253.9	256.6	257.7	257.1	259.5	259.9	260.6	258.4	258.2
Educational and Health Services*	584.7	585.9	586.5	587.9	588.4	590.0	590.9	591.2	590.3	590.9	591.8	592.9	593.2
Educational Services	90.0	90.1	90.5	90.2	90.0	90.6	89.8	90.0	90.0	89.6	89.5	90.3	90.1
Health Care and Social Assistance	494.7	495.8	496.0	497.7	498.4	499.4	501.1	501.2	500.3	501.3	502.3	502.6	503.1
Leisure and Hospitality*	339.6	340.8	339.3	340.1	341.0	340.1	340.0	339.8	338.5	337.8	337.9	336.0	336.1
Arts, Entertainment, & Recreation	51.8	52.3	51.8	51.6	51.7	51.6	51.6	51.2	51.5	51.4	50.5	49.9	49.8
Accommodation and Food Svs.	287.8	288.5	287.5	288.5	289.3	288.5	288.4	288.6	287.0	286.4	287.4	286.1	286.3
Other Services (2)	163.8	164.5	164.8	165.2	165.0	165.4	165.7	165.9	166.1	165.8	165.4	165.2	165.2
Total Government*	648.4	648.8	648.5	648.9	648.8	648.6	649.0	649.3	648.9	646.6	646.5	646.7	646.2
Federal Government	60.6	60.3	60.1	60.0	60.1	60.1	60.2	59.8	60.0	59.5	59.2	59.9	59.5
State Government (3)	152.9	153.3	153.6	153.8	153.4	153.5	153.6	153.8	153.5	151.8	152.2	151.8	151.0
Local Government	434.9	435.2	434.8	435.1	435.3	435.0	435.2	435.7	435.4	435.3	435.1	435.0	435.7

## Notes:

1. Nonfarm payroll employment includes civilians on nonfarm establishment payrolls who worked or received pay for any part of the pay period including the 12th of the month. It excludes proprietors, self-employed, unpaid family members and domestics in private households. All data are revised to March 2007 benchmarks. Individual series may not add to sector or supersector totals because not all sector/supersector components are published.
2. "Other Services" include: Repair and maintenance; Personal and laundry services; Religious, grantmaking, civic, professional and similar organizations.
3. The total number of state employees reported under this heading is determined on the basis of a definition developed by the US Bureau of Labor Statistics which is standardized throughout the nation. The definition includes both full- and part-time workers in the executive departments, the legislature, and the judiciary, as well as all employees of authorities, commissions, the state universities and colleges, and other agencies not included on the central payroll.

\* Seasonally adjusted total has been indirectly computed from the sum of the underlying industries.

\*\* The industry is not seasonally adjusted because seasonality is not statistically significant.

## Employment Data

### New Jersey Nonfarm Payroll Employment (000)

(not seasonally adjusted)

NAICS Industry	2007		2008										
	Nov	Dec	Jan	Feb	Mar	Apr	May	Jun	Jul	Aug	Sep	Oct	Nov
<b>Total Nonfarm (1)</b>	4,108.5	4,121.2	4,008.0	4,003.2	4,028.2	4,058.7	4,091.2	4,131.7	4,089.0	4,064.9	4,060.2	4,074.4	4,080.5
<b>Total Private Sector</b>	3,447.9	3,460.9	3,360.2	3,345.3	3,368.8	3,398.6	3,433.5	3,473.3	3,465.0	3,455.4	3,431.2	3,420.1	3,422.1
<b>Goods Producing</b>	487.4	484.0	467.5	462.4	466.1	472.1	475.5	478.1	477.5	478.0	475.4	471.3	468.4
<b>Natural Resources and Mining</b>	1.6	1.6	1.6	1.5	1.6	1.7	1.7	1.7	1.7	1.7	1.7	1.7	1.6
<b>Construction</b>	174.4	171.4	158.9	154.5	157.5	164.5	169.5	172.2	173.5	174.5	172.7	171.1	169.3
Construction of Buildings	41.6	41.4	39.7	39.0	39.9	40.4	41.0	41.8	42.3	42.4	42.1	42.0	41.5
Residential Building Construction	28.4	28.0	26.8	26.3	26.7	26.2	26.1	26.9	27.2	27.3	27.2	26.9	26.5
Heavy and Civil Engineering	18.4	17.4	15.0	14.2	14.6	16.4	17.2	17.5	17.8	17.8	17.7	17.4	16.8
Specialty Trade Contractors	114.4	112.6	104.2	101.3	103.0	107.7	111.3	112.9	113.4	114.3	112.9	111.7	111.0
Building Equipment Contractors	55.4	54.9	53.2	53.1	52.6	53.2	54.0	54.8	55.0	55.3	55.2	54.4	54.1
<b>Manufacturing</b>	311.4	311.0	307.0	306.4	307.0	305.9	304.3	304.2	302.3	301.8	301.0	298.5	297.5
Durable Goods	137.4	137.7	136.5	135.9	136.2	135.4	134.5	134.1	132.9	132.6	131.7	130.5	129.7
Fabricated Metal Product	27.2	27.2	26.7	26.5	26.7	26.6	26.8	27.0	26.7	26.7	26.8	26.7	26.7
Machinery Manufacturing	16.4	16.6	16.4	16.3	16.4	16.3	16.3	16.3	16.5	16.5	16.4	16.0	15.8
Computer and Electronic Products	29.9	29.9	30.2	30.2	30.3	30.3	30.3	30.7	30.5	30.6	30.4	30.6	30.5
Navig., Meas, Electromedical & Control Inst.	15.3	15.2	15.2	15.2	15.2	15.2	15.1	15.2	15.1	15.1	15.0	15.0	15.0
Transportation Equip. Mfg.	6.3	6.4	6.5	6.5	6.4	6.4	6.2	6.0	5.9	5.9	5.8	5.8	5.5
Miscellaneous Mfg.	19.6	19.4	19.2	19.5	19.6	19.6	19.5	19.5	19.5	19.4	19.5	19.5	19.8
Non-Durable Goods	174.0	173.3	170.5	170.5	170.8	170.5	169.8	170.1	169.4	169.2	169.3	168.0	167.8
Food Manufacturing	29.8	29.7	29.1	29.2	29.3	29.0	28.8	28.7	29.0	29.2	29.4	29.7	30.1
Paper Manufacturing	13.9	13.8	13.7	13.8	13.8	13.7	13.5	13.5	13.3	13.1	13.1	12.9	12.7
Printing and Related Support	22.6	22.4	21.5	21.2	21.1	21.2	21.1	21.1	20.9	20.6	20.5	20.5	20.4
Chemical Manufacturing	71.1	71.2	71.0	71.1	71.2	70.9	70.5	71.0	71.3	70.8	70.4	70.0	69.7
Basic Chemical Manufacturing	8.4	8.4	8.5	8.6	8.6	8.6	8.6	8.7	8.7	8.7	8.6	8.6	8.5
Pharmaceutical and Medicine	42.5	42.6	42.3	42.3	42.6	42.3	42.1	42.6	42.7	42.2	41.7	41.5	41.4
Plastics and Rubber Products	17.6	17.5	17.5	17.5	17.5	17.6	17.5	17.4	16.9	16.8	16.7	16.5	16.3
<b>Service-Providing</b>	3,621.1	3,637.2	3,540.5	3,540.8	3,562.1	3,586.6	3,615.7	3,653.6	3,611.5	3,586.9	3,584.8	3,603.1	3,612.1
<b>Private Service-Providing</b>	2,960.5	2,976.9	2,892.7	2,882.9	2,902.7	2,926.5	2,958.0	2,995.2	2,987.5	2,977.4	2,955.8	2,948.8	2,953.7
<b>Trade, Transportation, &amp; Utilities</b>	894.1	908.2	870.3	858.6	861.9	863.2	871.4	879.6	871.4	868.4	871.0	874.3	886.6
Wholesale Trade	232.6	233.2	230.4	229.9	230.0	230.4	231.4	232.8	232.7	231.9	231.0	230.2	230.5
Merchant Wholesalers, Durable Goods	116.3	116.6	114.9	114.6	114.8	114.6	114.6	115.1	114.9	114.4	114.1	113.7	113.9
Professional & Comm. Equip., & Supplies	31.5	31.5	31.5	31.5	31.7	31.7	31.6	31.5	31.6	31.6	31.5	31.5	31.5
Grocery and Related Product - Nondurable Goods	29.3	29.2	29.1	29.0	29.0	29.3	29.5	29.9	29.9	29.8	29.9	29.8	29.8
Wholesale Electronic Markets, Agents and Brokers	32.6	32.6	32.3	32.3	32.4	32.6	33.0	33.1	33.2	33.3	33.0	32.8	33.1

See notes on page S-23. Shaded rows on pp. 24-27 indicate employment at the NAICS supersector level.

## Employment Data

### New Jersey Nonfarm Payroll Employment (000)

(not seasonally adjusted)

NAICS Industry	2007		2008										
	Nov	Dec	Jan	Feb	Mar	Apr	May	Jun	Jul	Aug	Sep	Oct	Nov
Retail Trade	481.5	491.8	463.1	451.9	454.4	455.5	461.2	467.7	466.2	465.1	460.1	463.3	475.0
Motor Vehicle and Parts Dealers	47.2	46.9	46.3	46.2	46.3	46.4	46.5	46.5	46.3	46.2	46.5	46.1	45.5
Automobile Dealers	34.2	34.1	33.8	33.8	33.9	34.1	34.1	34.3	34.2	34.2	34.4	34.0	33.7
Furniture and Home Furnishings Stores	20.1	20.2	19.1	18.6	18.5	18.3	18.4	18.5	18.1	18.2	18.3	18.6	19.6
Electronics and Appliance Stores	17.4	17.6	16.4	16.2	16.2	16.0	15.8	15.5	15.4	15.4	15.3	15.7	16.6
Building Mat. & Garden Equip. & Supp. Dlr.	35.1	34.8	32.9	32.8	33.7	35.6	37.0	37.1	36.2	35.7	34.8	34.7	34.3
Food and Beverage Stores	108.8	109.5	107.7	107.5	107.7	107.6	109.6	111.7	112.0	111.3	109.2	108.8	109.3
Health and Personal Care Stores	39.1	39.8	39.2	38.6	38.5	38.0	38.3	38.7	38.4	38.1	37.6	37.7	37.6
Clothing and Clothing Accessories Stores	63.6	67.1	60.1	56.6	56.9	57.3	58.3	59.7	60.0	60.4	59.2	59.4	62.6
Sporting Goods, Hobby, Book, & Music Stores	25.2	26.2	22.9	21.8	21.7	21.9	22.1	22.3	22.0	21.9	21.9	22.3	23.8
General Merchandise Stores	71.7	75.1	66.6	62.8	63.2	63.0	63.3	64.9	64.5	64.9	64.3	66.0	71.1
Department Stores	57.4	60.7	53.6	50.5	51.0	50.8	50.8	52.2	51.7	52.2	52.0	53.3	57.0
Transportation, Warehousing, and Utilities	180.0	183.2	176.8	176.8	177.5	177.3	178.8	179.1	172.5	171.4	179.9	180.8	181.1
Utilities	13.4	13.4	13.5	13.5	13.5	13.6	13.8	14.1	14.0	13.9	13.7	13.7	13.7
Elec.Pwr Gen., Transmission & Distribution	7.5	7.5	7.6	7.7	7.7	7.7	7.9	8.0	8.0	8.0	7.9	8.0	8.0
Natural Gas Distribution	3.7	3.7	3.7	3.7	3.7	3.7	3.7	3.8	3.7	3.7	3.7	3.7	3.7
Transportation and Warehousing	166.6	169.8	163.3	163.3	164.0	163.7	165.0	165.0	158.5	157.5	166.2	167.1	167.4
Air Transportation	18.1	18.1	18.2	18.2	18.2	18.2	18.5	18.6	18.6	18.6	18.5	18.6	18.6
Truck Transportation	39.7	39.7	38.8	38.6	38.9	38.9	39.1	39.0	39.0	39.0	39.1	38.8	38.9
General Freight Trucking	30.0	30.0	29.2	29.3	29.4	29.5	29.5	29.1	29.0	29.0	29.2	29.2	29.2
Transit and Ground Passenger Transportation	30.3	30.7	29.6	29.6	29.7	29.8	30.3	30.1	23.0	21.3	29.6	30.3	30.2
Support Activities for Transportation	22.3	22.1	21.6	21.6	21.6	21.7	21.7	21.9	21.9	21.9	21.8	21.8	21.7
Couriers and Messengers	24.1	26.4	23.6	23.6	23.9	23.6	23.6	23.7	23.6	23.4	23.4	23.1	23.0
Warehousing and Storage	28.0	28.1	27.7	27.7	27.9	27.3	27.8	27.9	27.7	27.9	27.8	28.0	28.1
<b>Information</b>	<b>98.6</b>	<b>99.1</b>	<b>98.3</b>	<b>97.2</b>	<b>97.6</b>	<b>97.9</b>	<b>98.3</b>	<b>99.0</b>	<b>98.7</b>	<b>99.4</b>	<b>98.3</b>	<b>98.3</b>	<b>98.1</b>
Publishing Industries (except Internet)	29.0	29.0	28.5	28.4	28.4	28.4	28.4	28.5	28.4	28.3	28.0	27.8	27.9
Telecommunications	41.5	41.8	41.6	40.9	41.3	41.4	41.8	41.8	41.5	41.9	41.6	42.0	41.9
Wired Telecommunications Carriers	32.4	32.6	32.6	32.0	32.1	32.4	32.8	32.8	32.5	32.7	32.7	33.1	32.9
Internet Serv. Prvdrs., Web Srch. Portals & D.P.S.	11.4	11.5	11.5	11.6	11.5	11.5	11.5	11.5	11.5	11.5	11.5	11.5	11.5
<b>Financial Activities</b>	<b>270.6</b>	<b>270.5</b>	<b>267.9</b>	<b>267.4</b>	<b>267.7</b>	<b>267.4</b>	<b>267.7</b>	<b>269.8</b>	<b>268.8</b>	<b>268.4</b>	<b>264.1</b>	<b>263.1</b>	<b>262.2</b>
Finance and Insurance	212.5	212.3	211.5	211.1	211.1	210.6	210.0	210.8	210.1	209.4	206.4	205.8	205.0
Credit Intermediation & Related Activities	74.3	73.7	73.2	73.1	72.9	72.5	72.2	72.1	72.6	72.1	70.8	70.2	69.5
Depository Credit Intermediation	50.3	50.4	50.4	50.1	50.1	50.0	50.0	50.3	50.8	50.7	50.2	50.0	49.7
Nondepository Credit Interditiion	18.2	17.8	17.6	17.6	17.6	17.2	17.0	16.6	16.4	16.0	15.5	15.4	15.3

See notes on page S-23. Shaded rows on pp. 24-27 indicate employment at the NAICS supersector level.

# Employment Data

## New Jersey Nonfarm Payroll Employment (000)

(not seasonally adjusted)

NAICS Industry	2007		2008										
	Nov	Dec	Jan	Feb	Mar	Apr	May	Jun	Jul	Aug	Sep	Oct	Nov
Securities, Commodity Contracts & Other	53.8	53.8	53.9	54.2	54.4	54.3	53.8	54.3	53.9	53.9	52.5	52.2	52.2
Scrty & Comdty Contracts Intermed & Brkrage	41.3	41.2	41.3	41.4	41.4	41.4	40.9	41.2	40.3	40.3	39.2	38.8	38.7
Ins. Carriers & Rel Activities	82.9	83.2	82.4	82.1	82.3	82.2	82.1	82.5	82.4	82.3	81.6	81.6	81.4
Insurance Carriers	52.6	52.7	52.0	51.9	52.0	51.9	51.9	52.1	52.3	52.2	51.8	51.8	51.7
Agencies, Brkrages, & other Ins. Rel. Activities	30.3	30.5	30.4	30.2	30.3	30.3	30.2	30.4	30.1	30.1	29.8	29.8	29.7
Real Estate/Rental & Leasing	58.1	58.2	56.4	56.3	56.6	56.8	57.7	59.0	58.7	59.0	57.7	57.3	57.2
Real Estate	39.5	39.6	38.6	38.6	38.8	38.9	39.4	40.2	40.1	40.2	39.6	39.7	39.6
Rental and Leasing Svcs.	17.7	17.8	17.2	17.1	17.3	17.5	17.9	18.3	18.2	18.1	17.8	17.6	17.5
<b>Professional &amp; Business Svcs.</b>	<b>615.3</b>	<b>614.5</b>	<b>593.0</b>	<b>593.5</b>	<b>600.5</b>	<b>610.7</b>	<b>614.7</b>	<b>620.6</b>	<b>623.5</b>	<b>624.5</b>	<b>622.3</b>	<b>620.6</b>	<b>618.4</b>
Professional, Sci., & Tech. Svcs.	287.2	289.2	286.6	287.8	288.9	290.5	288.6	291.1	291.8	290.4	287.5	289.9	289.9
Legal Services	42.3	42.4	42.1	41.9	42.0	42.1	42.3	43.0	42.9	42.8	42.3	42.3	42.2
Accounting/Tax Prep/Bookkeep/ Payroll Services	33.0	34.8	36.1	37.2	37.0	36.6	33.4	33.4	33.4	33.8	33.5	33.4	33.5
Architectural, Engineering & Related Services	43.8	43.8	43.0	42.9	43.0	43.6	43.9	44.7	45.4	45.1	44.1	44.5	44.3
Computer Systems Design & Related Services	62.1	63.1	62.1	62.3	62.4	62.9	62.8	62.9	62.9	62.3	62.2	62.2	62.5
Management, Sci & Tech Consulting Services	34.3	34.4	33.4	33.3	33.4	33.5	33.6	34.0	34.5	34.8	35.0	35.1	35.3
Scientific Research & Development Services	29.3	29.2	29.0	28.8	28.8	28.7	28.8	29.0	29.0	28.9	28.2	28.3	28.2
Advertising and Related Services	16.8	16.9	16.5	16.6	16.8	16.7	16.6	16.5	16.4	16.3	16.2	16.3	16.3
Management of Companies and Enterprises	66.9	66.9	65.9	65.8	66.1	65.5	65.7	66.2	66.2	66.4	66.6	66.8	66.7
Adm/Support Waste Mgt/ Remediation Services	261.2	258.4	240.5	239.9	245.5	254.7	260.4	263.3	265.5	267.7	268.2	263.9	261.8
Employment Services	99.3	99.2	90.9	90.8	93.9	92.9	94.4	95.0	97.2	99.8	101.9	98.4	96.9
Business Support Services	16.7	16.9	16.7	16.8	16.8	16.9	17.0	16.9	16.6	16.6	16.6	16.5	16.7
Investigation & Security Svcs.	27.5	27.5	27.3	27.4	27.5	27.6	28.0	28.0	28.0	28.0	28.1	28.1	28.0
Svcs. to Buildings & Dwellings	67.2	60.3	52.5	52.2	55.4	65.3	68.9	71.2	71.7	70.8	69.1	67.7	66.0
<b>Educational &amp; Health Services</b>	<b>588.3</b>	<b>589.8</b>	<b>584.3</b>	<b>587.4</b>	<b>590.4</b>	<b>591.6</b>	<b>594.5</b>	<b>593.6</b>	<b>586.3</b>	<b>582.7</b>	<b>587.8</b>	<b>594.5</b>	<b>596.9</b>
Educational Services	92.7	92.4	88.8	91.0	92.0	92.4	92.7	90.0	85.9	83.0	87.6	92.1	92.8
Elementary and Secondary Schools	38.1	38.0	37.8	38.1	38.0	38.1	38.2	38.2	35.1	33.8	37.2	37.9	38.3
Colleges, Universities, and Professional Schools	29.1	28.9	27.1	29.1	29.4	29.7	29.3	27.3	26.1	25.9	28.1	29.8	30.0
Health Care and Social Assistance	495.6	497.4	495.5	496.4	498.4	499.2	501.8	503.6	500.4	499.7	500.2	502.4	504.1
Ambulatory Health Care Svcs.	180.4	182.1	181.0	181.3	182.0	182.2	183.5	184.5	183.7	183.4	183.3	184.5	184.9
Offices of Physicians	68.6	68.8	68.2	68.1	68.3	68.4	68.9	69.4	69.3	69.3	69.0	69.3	69.6
Offices of Dentists	27.0	27.4	27.3	27.3	27.3	27.2	27.4	27.5	27.3	27.4	27.3	27.0	26.9
Home Health Care Services	29.7	30.2	29.8	30.1	30.2	30.2	30.4	30.6	30.4	30.5	30.8	30.9	30.8

See notes on page S-23. Shaded rows on pp. 24-27 indicate employment at the NAICS supersector level.



# Employment Data

## New Jersey Nonfarm Payroll Employment (000) (not seasonally adjusted)

NAICS Industry	2007		2008										
	Nov	Dec	Jan	Feb	Mar	Apr	May	Jun	Jul	Aug	Sep	Oct	Nov
Hospitals	156.0	155.5	155.2	155.3	155.7	155.8	156.2	156.5	156.3	156.9	156.5	156.5	156.8
Nursing and Residential Care Facilities	83.7	83.9	83.5	83.7	84.0	84.2	84.5	84.7	84.3	84.4	84.3	84.5	85.0
Nursing Care Facilities	47.0	47.1	46.4	46.5	46.8	46.9	47.1	47.2	47.3	47.4	47.4	47.5	47.8
Community Care Facilities for the Elderly	18.4	18.4	18.5	18.4	18.5	18.4	18.4	18.5	18.6	18.5	18.4	18.3	18.5
Social Assistance	75.5	75.9	75.8	76.1	76.7	77.0	77.6	77.9	76.1	75.0	76.1	76.9	77.4
Child Day Care Services	37.5	37.6	37.3	37.6	37.9	38.0	38.3	38.2	36.2	35.2	37.3	37.9	38.2
<b>Leisure and Hospitality</b>	<b>330.6</b>	<b>330.6</b>	<b>316.4</b>	<b>316.0</b>	<b>321.2</b>	<b>330.4</b>	<b>344.8</b>	<b>363.8</b>	<b>369.5</b>	<b>365.9</b>	<b>347.8</b>	<b>333.6</b>	<b>327.2</b>
Arts, Entertainment, and Recreation	47.1	46.5	41.7	41.6	43.5	48.8	53.1	60.9	66.5	64.9	53.2	48.8	45.3
Amusement, Gambling & Recreation Industries	37.2	36.7	33.2	33.2	34.9	39.3	43.1	50.1	55.4	53.6	42.8	38.3	35.3
Accommodation and Food Services	283.5	284.1	274.7	274.4	277.7	281.6	291.7	302.9	303.0	301.0	294.6	284.8	281.9
Accommodation	65.1	64.2	62.3	62.0	62.3	62.9	64.8	68.0	72.2	71.8	67.8	64.6	63.0
Casino Hotels	38.1	38.1	37.9	37.8	38.0	37.7	38.3	39.7	41.4	41.2	40.5	39.1	38.4
Food Services and Drinking Places	218.4	219.9	212.4	212.4	215.4	218.7	226.9	234.9	230.8	229.2	226.8	220.2	218.9
Full-Service Restaurants	95.6	96.3	93.2	93.3	94.2	95.6	99.3	103.3	104.1	103.6	99.1	95.5	94.7
Limited-Service Eating Places	84.7	85.2	82.7	82.3	84.0	86.4	89.2	91.9	92.7	92.0	88.7	86.2	85.8
Special Food Services	29.1	29.3	27.7	28.0	28.3	27.7	29.0	29.4	23.6	23.2	29.1	29.2	29.1
Drinking Places (Alcoholic Beverages)	9.0	9.1	8.8	8.8	8.9	9.0	9.4	10.3	10.4	10.4	9.9	9.3	9.3
<b>Other Services</b>	<b>163.0</b>	<b>164.2</b>	<b>162.5</b>	<b>162.8</b>	<b>163.4</b>	<b>165.3</b>	<b>166.6</b>	<b>168.8</b>	<b>169.3</b>	<b>168.1</b>	<b>164.5</b>	<b>164.4</b>	<b>164.3</b>
Repair and Maintenance	37.4	37.7	37.5	37.7	37.7	37.5	37.7	37.7	37.8	37.6	37.6	37.1	37.2
Automotive Repair and Maintenance	26.9	27.1	26.8	26.9	26.9	26.8	26.9	26.9	27.0	26.7	26.6	26.3	26.4
Personal and Laundry Services	49.4	49.8	48.7	48.9	49.3	50.2	51.0	51.2	51.4	51.4	51.1	50.7	50.6
Personal Care Services	29.1	29.4	29.1	29.4	29.5	29.6	30.2	30.2	30.2	30.3	30.2	30.1	30.0
Religious, Grantmaking, Civic, Professional & Similar Orgs.	76.2	76.7	76.3	76.2	76.4	77.6	77.9	79.9	80.1	79.1	75.8	76.6	76.5
<b>Government</b>	<b>660.6</b>	<b>660.3</b>	<b>647.8</b>	<b>657.9</b>	<b>659.4</b>	<b>660.1</b>	<b>657.7</b>	<b>658.4</b>	<b>624.0</b>	<b>609.5</b>	<b>629.0</b>	<b>654.3</b>	<b>658.4</b>
Federal Government	60.5	60.8	59.8	59.5	59.5	59.8	60.0	60.1	60.6	60.1	59.4	59.8	59.4
Other Federal Government	17.8	17.6	17.3	17.3	17.3	17.5	17.8	17.9	18.1	18.1	17.8	17.8	17.9
Department of Defense	13.7	13.7	13.7	13.6	13.6	13.5	13.5	13.8	13.8	13.8	13.5	13.7	13.7
U.S. Postal Service	29.0	29.5	28.8	28.6	28.6	28.8	28.7	28.4	28.7	28.2	28.1	28.3	27.8
State Government	156.4	155.8	150.9	156.4	156.5	156.9	154.0	150.2	148.7	146.2	150.5	154.6	154.5
State Government Education	52.2	51.7	46.7	51.9	52.2	52.8	49.8	45.5	44.8	44.0	48.8	52.5	52.1
State Government Hospitals	12.2	12.2	12.3	12.2	12.2	12.1	12.0	11.9	11.9	11.9	11.9	12.1	12.2
Other State Government	92.0	91.9	91.9	92.3	92.1	92.0	92.2	92.8	92.0	90.3	89.8	90.0	90.2
Exec./Leg./Judicial *	79.1	79.2	79.4	79.5	79.6	79.3	79.3	79.4	78.9	77.4	77.1	77.1	76.9
Local Government	443.7	443.7	437.1	442.0	443.4	443.4	443.7	448.1	414.7	403.2	419.1	439.9	444.5
Local Government Education	276.0	275.5	270.8	276.1	277.1	276.5	275.2	274.2	230.2	220.9	247.2	273.6	277.8
Other Local Government	167.7	168.2	166.3	165.9	166.3	166.9	168.5	173.9	184.5	182.3	171.9	166.3	166.7

See notes on page S-23. Shaded rows on pp. 24-27 indicate employment at the NAICS supersector level.

## Hours and Earnings Data

### Production/Non-supervisory Workers in New Jersey

NAICS Industry	2007		2008										
	Nov	Dec	Jan	Feb	Mar	Apr	May	Jun	Jul	Aug	Sep	Oct	Nov
<b>Average Weekly Hours of Production / Non-supervisory Workers<sup>1</sup></b>													
<b>Manufacturing</b> (production)	41.8	42.2	41.7	41.7	41.7	42.2	42.2	42.5	41.8	41.5	41.5	41.0	41.3
Durable Goods	41.5	42.1	41.7	41.9	42.1	42.4	42.6	42.9	42.5	42.2	41.8	41.2	41.7
Nondurable Goods	42.1	42.2	41.7	41.6	41.4	42.0	41.8	42.2	41.2	41.0	41.3	40.8	41.0
<b>Information<sup>4</sup></b>	34.2	34.7	34.4	34.6	35.1	34.6	34.5	35.2	34.5	34.3	34.7	34.5	34.5
<b>Average Hourly Gross Dollar Earnings<sup>2</sup></b>													
<b>Manufacturing</b> (production)	17.45	17.64	17.76	17.85	17.77	17.74	17.76	17.79	17.84	17.88	17.94	17.96	18.10
Durable Goods	19.62	19.72	19.68	19.94	19.80	19.75	19.69	19.74	19.68	19.88	19.93	20.15	20.23
Nondurable Goods	15.69	15.91	16.14	16.07	16.02	15.99	16.10	16.10	16.24	16.18	16.29	16.17	16.31
<b>Information<sup>4</sup></b>	32.49	32.33	32.27	32.32	32.48	32.57	32.67	32.75	31.53	31.52	31.38	30.97	31.19
<b>Average Weekly Gross Dollar Earnings<sup>3</sup></b>													
<b>Manufacturing</b> (production)	729.41	744.41	740.59	744.35	741.01	748.63	749.47	756.08	745.71	742.02	744.51	736.6	747.53
Durable Goods	814.23	830.21	820.66	835.49	833.58	837.40	838.79	846.85	836.40	838.94	833.07	830.18	843.59
Nondurable Goods	660.55	671.40	673.04	668.51	663.23	671.58	672.98	679.42	669.09	663.38	672.78	659.74	668.71
<b>Information<sup>4</sup></b>	1,111.16	1,121.85	1,110.09	1,118.27	1,140.05	1,126.92	1,127.12	1,152.80	1,087.79	1,081.14	1,088.89	1,068.47	1,076.06

\* Eight manufacturing production series were deleted because these series failed to meet the criteria established by the Bureau of Labor Statistics and will no longer be published.

- (1) Average hours worked or paid are affected by labor turnover, changes in overtime hours and part-time employment.
- (2) Hourly earnings include paid holidays, vacation and sick leave. They are affected by changes in workforce composition and in wage rates.
- (3) Weekly earnings are affected by premium pay, shift differentials, piecework and incentive payments, length of workweek and other factors.
- (4) Non-supervisory workers. The Information Supersector includes the Publishing Industries, Telecommunications, and Internet Service Providers, Web Search Portal, and Data Processing Service Sectors.

# Comparative Trends

## US and New Jersey Civilian Labor Force Trends 1982-2008 (000)

DATE	Labor Force		Employment		Unemployment Volume		Unemployment Rate (%)	
	US	NJ	US	NJ	US	NJ	US	NJ
Annual Averages 1982-2007								
1982	110,204	3,629.2	99,526	3,314.5	10,678	314.7	9.7	8.7
1983	111,550	3,688.8	100,834	3,392.6	10,717	296.2	9.6	8.0
1984	113,544	3,795.1	105,005	3,560.9	8,539	234.2	7.5	6.2
1985	115,461	3,839.5	107,150	3,624.4	8,312	215.1	7.2	5.6
1986	117,834	3,903.5	109,597	3,706.5	8,237	197.0	7.0	5.0
1987	119,865	3,959.8	112,440	3,798.5	7,425	161.3	6.2	4.1
1988	121,669	3,973.5	114,968	3,821.8	6,701	151.6	5.5	3.8
1989	123,869	4,000.0	117,342	3,835.3	6,528	164.7	5.3	4.1
1990	125,840	4,072.5	118,793	3,865.0	7,047	207.5	5.6	5.1
1991	126,346	4,050.4	117,718	3,776.6	8,628	273.7	6.8	6.8
1992	128,105	4,051.9	118,492	3,709.5	9,613	342.4	7.5	8.4
1993	129,200	4,034.6	120,259	3,727.3	8,940	307.3	6.9	7.6
1994	131,056	4,067.5	123,060	3,790.0	7,996	277.5	6.1	6.8
1995	132,304	4,111.8	124,900	3,846.3	7,404	265.5	5.6	6.5
1996	133,943	4,184.1	126,708	3,925.8	7,236	258.3	5.4	6.2
1997	136,297	4,257.4	129,558	4,031.0	6,739	226.4	4.9	5.3
1998	137,673	4,242.4	131,463	4,047.1	6,210	195.3	4.5	4.6
1999	139,368	4,284.6	133,488	4,092.7	5,880	191.8	4.2	4.5
2000	142,583	4,287.8	136,891	4,130.3	5,692	157.5	4.0	3.7
2001	143,734	4,302.3	136,933	4,117.5	6,801	184.8	4.7	4.3
2002	144,863	4,370.8	136,485	4,117.3	8,378	253.5	5.8	5.8
2003	146,510	4,363.9	137,736	4,108.4	8,774	255.5	6.0	5.9
2004	147,401	4,373.0	139,252	4,157.5	8,149	215.5	5.5	4.9
2005	149,320	4,431.6	141,730	4,232.8	7,591	198.7	5.1	4.5
2006	151,428	4,492.8	144,427	4,283.6	7,001	209.2	4.6	4.7
2007	153,124	4,466.3	146,047	4,276.6	7,078	189.7	4.6	4.2

### Monthly Data 2007-2008 (Seasonally Adjusted) \*

2007								
Jan	152,958	4,477.1	145,915	4,285.3	7,043	191.8	4.6	4.3
Feb	152,725	4,474.0	145,888	4,281.4	6,837	192.6	4.5	4.3
Mar	152,884	4,469.0	146,145	4,275.5	6,738	193.6	4.4	4.3
Apr	152,542	4,468.1	145,713	4,275.0	6,829	193.1	4.5	4.3
May	152,776	4,466.1	145,913	4,275.8	6,863	190.3	4.5	4.3
Jun	153,085	4,467.6	146,087	4,278.4	6,997	189.3	4.6	4.2
Jul	153,182	4,463.7	146,045	4,274.3	7,137	189.4	4.7	4.2
Aug	152,886	4,462.0	145,753	4,274.2	7,133	187.7	4.7	4.2
Sep	153,506	4,461.0	146,260	4,273.8	7,246	187.2	4.7	4.2
Oct	153,306	4,460.3	146,016	4,274.8	7,291	185.5	4.8	4.2
Nov	153,828	4,462.6	146,647	4,274.6	7,181	188.1	4.7	4.2
Dec	153,866	4,463.8	146,211	4,275.8	7,655	188.0	5.0	4.2

2008								
Jan	153,824	4,491.2	146,248	4,287.1	7,576	204.1	4.9	4.5
Feb	153,374	4,507.7	145,993	4,291.3	7,381	216.3	4.8	4.8
Mar	153,784	4,495.3	145,969	4,278.2	7,815	217.1	5.1	4.8
Apr	153,957	4,511.9	146,331	4,288.6	7,626	223.3	5.0	4.9
May	154,534	4,516.8	146,046	4,273.9	8,487	242.9	5.5	5.4
Jun	154,390	4,505.0	145,891	4,267.4	8,499	237.6	5.5	5.3
Jul	154,603	4,505.6	145,819	4,260.1	8,784	245.5	5.7	5.4
Aug	154,853	4,525.5	145,477	4,258.1	9,376	267.4	6.1	5.9
Sep	154,732	4,540.2	145,255	4,276.1	9,477	264.1	6.1	5.8
Oct	155,038	4,552.7	144,958	4,278.7R	10,080	273.9R	6.5	6.0
Nov	154,616	4,520.7	144,285	4,245.6	10,331	275.1	6.7	6.1
Dec								

\* New Jersey monthly data are based on a different estimating procedure. Monthly data have been revised to incorporate updated seasonal adjustment factors which reflect the 2007 experience.

## Unemployment Insurance Program

### Characteristics of New Jersey's Unemployed (000)

	November 2008	October 2008	November 2007	Percent Change From Month Ago	Year Ago
<b>Total Insured Unemployed *</b>	139.6	122.2	102.1	14.2	36.8
<b>Total Insured Unemployed</b>	156.3	145.3	114.4	7.6	36.6
<b>By Gender</b>					
Male	90.1	83.6	63.6	7.7	41.6
Female	64.1	60.5	49.8	5.9	28.6
<b>By Race</b>					
White	94.7	89.7	68.1	5.5	39.1
Black	29.3	28.0	23.6	4.5	23.9
Asian	4.9	4.4	2.9	10.9	70.0
Other	1.5	1.5	1.2	4.1	30.8
Chose not To Answer	21.2	18.3	15.4	15.7	37.2
<b>By Ethnicity</b>					
Hispanic	29.7	27.3	21.8	8.9	36.5
Not Hispanic	108.7	101.7	81.9	6.9	32.6
Chose not to Answer	11.2	9.9	8.5	13.2	32.0
<b>By Age of Claimant</b>					
Under 25	14.4	13.2	10.5	9.0	37.0
25 through 34 years	35.3	32.7	25.9	8.1	36.2
35 through 44 years	35.6	32.7	27.7	9.1	27.8
45 through 54 years	37.0	35.1	26.7	5.3	38.5
55 through 64 years	22.9	22.0	16.1	4.0	41.9
65 years and over	8.7	8.5	6.3	2.8	38.1
<b>By Duration of Unemployment</b>					
1 to 2 weeks	25.9	23.2	18.0	11.6	44.0
3 to 4 weeks	19.3	18.8	14.3	2.8	35.3
5 to 14 weeks	61.7	57.3	46.8	7.8	31.9
15 weeks and over	42.5	40.9	32.5	3.9	30.7
<b>By Industry</b>					
Goods Producing	31.7	30.0	23.3	5.6	36.1
Construction	18.3	17.9	13.9	2.5	31.9
Manufacturing	12.7	11.4	8.8	11.1	44.9
Service Providing	118.6	109.7	88.0	8.1	34.8
Trade, Transportation, Utilities	33.1	30.5	24.5	8.5	35.0
Wholesale Trade	8.2	7.5	6.3	10.2	31.3
Retail Trade	17.2	15.8	12.6	8.5	36.6
Transportation & Warehousing	7.5	7.1	5.6	6.9	35.8
Financial Activities	9.4	8.8	7.5	7.0	25.7
Professional & Business Services	25.5	23.2	19.3	9.8	31.9
Educational and Health Services	14.1	13.4	11.7	5.2	19.7
Leisure and Hospitality	13.0	12.9	10.7	1.0	21.8
Other Services	3.3	3.2	2.6	5.9	29.0
Government	2.1	2.3	1.8	-5.4	20.7

Notes: Totals may not add due to seasonal adjustment, rounding and differences in the availability of data.

\* Not seasonally adjusted

## Statistical Section Notes

---

### Adjustment of Data

**Seasonal Adjustment.** All tables/charts, unless otherwise specified, contain data that are seasonally adjusted using the **X-12 ARIMA** (Auto-Regressive Integrated Moving Average) method of seasonal adjustment developed by Statistics Canada.

The **X-12** procedure was used in a “two-step” process. One set of factors was generated for benchmarked estimates, based on absolute or universe counts of employment determined through Unemployment Insurance records. These factors were used to seasonally adjust historical, universe-based data through September 2007. A second set of factors was generated using the record of sample-based estimates, and applied to reprojected sample-based estimates for the last quarter of 2007 and sample-based estimates developed month by month in 2008.

### Annual Revision and Internet Access

**Annual revisions** of the data series in *Economic Indicators* normally incorporate:

- (1) the latest benchmark — 2007 for the Resident Labor Force Indicators (Series 1-6) and 2007 for Establishment Employment Indicators (Series 7-16).
- (2) new seasonal adjustment factors, which usually affect at least five years of seasonally adjusted data, or the period from January 2003 forward.

**Internet Access:** Available on the Labor Planning & Analysis (LPA) Web site, <http://www.nj.gov/labor/lra>, are:

- (1) the current month's *Economic Indicators* issue. **NOTE:** McGraw Hill's monthly construction contract data (Series 19-21) ARE PROHIBITED BY LAW FROM ELECTRONIC DISTRIBUTION and, therefore, are not available via the LPA Web site.
- (2) historical series when available, January 1976 to December 2007. This includes the latest annual revisions to unadjusted nonfarm data (January 2006 to December 2007) and seasonal adjustment revisions (January 2003 to December 2007). Because revisions can affect various multi-year periods of original and seasonally adjusted data, it would be incorrect to generate a historic time series for *Economic Indicators* data by tying together series from old issues. For example, seasonally adjusted data from January 2004 to December 2008 are subject to change during the next annual revision cycle.

### General Notes

**Annual Averages.** On p. S-22 are the annual averages of the of the data series for recent years to be used as a benchmark for evaluating current monthly data.

**Charts.** Unless otherwise noted, all graphs were developed with seasonally adjusted data.

**Moving Averages.** Series where the monthly data vary erratically have been plotted with moving averages (thick line) and nonaveraged data (thin line) superimposed.

**Scales.** The scale of each series is determined by the volume and trend of the data series. Caution should be exercised in making comparisons among charts of different scales.

**Shaded Columns.** Shaded areas indicate periods of general national contraction as identified by the National Bureau of Economic Research (NBER). The July 1990-March 1991 and the March 2001-November 2001 national recessions are shown in the graphs for Series 1-30.

**Tables.** Revised data are indicated by an “R” after the entry.

## Statistical Section Notes (cont.)

### Data Sources for Economic Time Series 1-30

No.	Title	Data Source
1	Civilian Labor Force	NJ Department of Labor and Workforce Development, Division of Labor Market and Demographic Research
2	Resident Employment	
3	Unemployment	
4	Labor Force Participation Rate	
5	Employment/Population Ratio	
6	Unemployment Rate	
7	Nonfarm Payroll Employment	
8	Private Sector Nonfarm Payroll Employment	
9	Construction Payroll Employment	
10	Manufacturing Payroll Employment	
11	Trade, Transportation and Utilities Payroll Employment	
12	Information Payroll Employment	
13	Financial Activities Payroll Employment	
14	Professional and Business Services Payroll Employment	
15	Education and Health Services Payroll Employment	
16	Leisure and Hospitality Payroll Employment	
17	CPI for All Urban Consumers (CPI-U)	US Bureau of Labor Statistics
18	Consumer Confidence Index for Middle Atlantic Region	The Conference Board
19	Total Construction Contracts Awarded	McGraw-Hill Construction
20	Residential Construction Contracts Awarded	
21	Nonresidential Construction Contracts Awarded	
22	Total Private Dwelling Units Auth. by Bldg. Permits	US Bureau of the Census, Manufacturing and Construction Division
23	Priv. Single-Fam. Dwelling Units Auth. by Bldg. Permits	
24	Priv. Multi-Fam. Dwelling Units Auth. by Bldg. Permits	
25	Total New Vehicle Registrations	R.L. Polk and Company
26	New Passenger Car Registrations	
27	New Light Truck/Van Registrations	
28	Weeks Claimed and Insured Unemployment Rate	NJ Department of Labor and Workforce Development, Division of Program Planning, Analysis and Evaluation
29	Initial Claims - Weekly Averages	
30	Unemployment Insurance Exhaustions	

### Data Sources for Economic Time Series 1-30

- 1-6 **Resident Labor Force Indicators** are produced using a modeling procedure based on regression techniques, that allows for the construction of error ranges. This procedure includes data variables from the NJ Department of labor & Workforce Development's monthly Current Employment Statistics (CES) survey, unemployment insurance claims data and responses from the US Bureau of labor Statistics' Current Population Survey (CPS) of 1,500 households in New Jersey. A new method was introduced effective with January 2005 estimates. Data are available monthly back to 1976.

Beginning with 1990, data incorporate 2000 census-based population controls as well as improved estimates of immigration, emigration, births and deaths for the state and are not directly comparable to earlier figures.

The **Labor Force Participation Rate** and the **Employment/Population Ratio** (Series 4 and 5) are expressed as percentages of the civilian noninstitutional population aged 16 years and over.

- 7-16 The **Establishment Employment Indicators** are generated from the monthly CES survey of employers on the number of persons who worked or received pay for any part of the pay period including the 12th of the month.

Data reflect March 2007 benchmarks.

## Statistical Section Notes (cont.)

---

Seasonally adjusted data for Series 7-16 have been revised back to January 2003.

Not seasonally adjusted data have been revised back to 2006.

**Private Sector Nonfarm Payroll Employment** (Series 8) is computed by subtracting government employment from total nonfarm employment.

Standard errors have been computed to estimate the variance of total private sector employment and for all supersector series statewide, as well as for total private sector employment for Metropolitan Statistical Areas. More detailed information is available at [www.nj.gov/labor/lra](http://www.nj.gov/labor/lra) under "New Jersey's Economy". Please see the technical note on sample variance.

- 17 The **Consumer Price Index for All Urban Consumers (CPI-U)** is a measure of the average change over time in the prices paid by all urban consumers (excluding military personnel and persons in institutions) for a fixed market basket of consumer goods and services. The month-to-month change in the CPI is a measure of inflation. Beginning with January 2007, monthly data is reported out to three decimal points.

The **CPI-U** represents approximately 87% of the total population. The **US CPI-U** is the US City Average. The **US CPI-U** and **Metro Area CPI-U** (see definitions below) are not seasonally adjusted.

The CPI does not measure the relative cost of living between areas. There is no "New Jersey CPI". The division of New Jersey's 21 counties between two metropolitan areas for which CPIs are calculated is defined below.

Internet: US Bureau of Labor Statistics Web site may be accessed at <http://www.bls.gov/data/top20.htm> for all regional and national CPI data.

Metro Area definitions:

**"NY"** designates the *New York-Northern New Jersey - Long Island, NY-NJ-CT-PA area*. In New Jersey this includes Bergen, Essex, Hudson, Hunterdon, Mercer, Middlesex, Monmouth, Morris, Ocean, Passaic, Somerset, Sussex, Union and Warren counties. In New York, it includes New York City (5 counties), Dutchess, Nassau, Orange, Putnam, Rockland, Suffolk and Westchester counties. In Connecticut, it includes Fairfield and New Haven counties, plus parts of Litchfield and Middlesex counties. In Pennsylvania, it includes Pike County. Data are published monthly.

**"PA"** designates the *Philadelphia-Wilmington-Atlantic City, PA-NJ-DE-MD area*. In New Jersey this includes Atlantic, Burlington, Camden, Cape may, Cumberland, Gloucester, and Salem Counties. In Pennsylvania, it includes Bucks, Chester, Delaware, Montgomery and Philadelphia counties. In Delaware, it includes New Castle County, and in Maryland, Cecil County. Data are published bi-monthly.

- 18 **Consumer Confidence Index (CCI), Middle Atlantic Region (US 1985=100)** is based on a representative, random sample of 750 (15%) of a total of 5,000 US households surveyed monthly by NFO Research for the Conference Board. The index represents consumers' perceptions of the present general economy, their own financial conditions as well as their short-term (six months) outlook. Economists use the CCI as a leading indicator for consumer spending. The middle Atlantic Region consists of New Jersey, New York and Pennsylvania. Regional data are not seasonally adjusted.

- 19-21 **Construction Contracts** monthly data for current and prior year are subject to revision. Construction contracts unadjusted data revisions are published by special contract with The McGraw-Hill Construction. **PROHIBITED BY LAW ARE (1) REPRINTING AND (2) ELECTRONIC DISSEMINATION OF THE MONTHLY DATA.**



## Statistical Section Notes (cont.)

---

**Total Construction Contracts Awarded** (Series 19) is the sum of not seasonally adjusted residential, nonresidential, and nonbuilding construction contract awards. The nonbuilding series is not published in the *New Jersey Economic Indicators*; however, current month, prior-month, year-ago nonbuilding data as well as cumulative over-the-year change may be found in the **New Jersey's Economy by the Numbers** table. (These data are not included on the Internet version of the table.)

Beginning October 1993, dormitories and hotels were no longer categorized as residential (Series 20); they were included in nonresidential construction contract awards (Series 21).

- 22-24 The **Residential Building Permits Indicators** are compiled by the US Bureau of the Census, Manufacturing and Construction Division as of the thirteenth workday of the following month. Data are collected for all permit-issuing places in the state through a monthly survey of local construction officials. If data are not received for a particular place for that month, the data are imputed. The Census Bureau conducts an annual follow-up to obtain as much data as possible for places for which the data were imputed during the year; these data are then considered to be **FINAL MONTHLY FIGURES**. (Final statewide totals used to produce the annual averages on p. S-22 also include "undistributed" units.) Data beginning January 1998 contain revisions allocated back to prior months and are directly comparable to over-the-year changes shown on the **New Jersey's Economy by the Numbers** table.

**Total Private Dwelling Units Authorized by Building Permits** (Series 22) data are the sum of single-family, two-family, three-or-four-family, and five-or-more-family dwelling units. Public housing units are not included in the series and represent a tiny fraction of the total.

**Private Multi-Family (5+ units) Authorized by Building Permits** (Series 24) include all multi-family structures with five or more units, except those in public housing. Data do not exhibit a stable seasonal pattern and are, therefore, not appropriate for seasonal adjustment.

- 25-27 These series on **New Passenger Car & New Light Truck/Van Registrations** present data only on total new passenger cars and total light truck/vans (in the gross vehicle weight class 0-10,000 lbs.) registered in New Jersey, regardless of the state in which the sales occur. Included are both domestically produced and imported vehicles. Excluded are all federal government registrations. Monthly data for current and prior-year are subject to revision.

Because of unemployment insurance (UI) coverage and other law changes affecting eligibility for benefits, data on unemployment insurance claims (Series 28-30) may not be directly comparable between years.

- 28 **Weeks Claimed (Weekly Average)** is computed by dividing the total number of weeks claimed (intra-state and interstate agent under the Regular State UI Program only) in the month by the number of weeks in the month.

The **Insured Unemployment Rate (IUR)** is the seasonally adjusted weekly average of weeks claimed (intrastate and interstate agent claims under the Regular State UI Program only), which is a proxy for a count of claimants, as a percent of employment covered by unemployment insurance.

- 29 The **Initial Claims Weekly Average** represents intrastate and interstate agent claims under the Regular State UI program only.

- 30 **Unemployment Insurance Exhaustions** are for the Regular State UI Program only.