

August 2009



New Jersey



ECONOMIC INDICATORS

Jon S. Corzine
Governor

NEW JERSEY DEPARTMENT OF
LWD
LABOR AND WORKFORCE DEVELOPMENT
nj.gov/labor

David J. Socolow
Commissioner

NEW JERSEY ECONOMIC INDICATORS

No. 516 Based on data through August 27, 2009

This Month's Feature Article

2009 Mid-Season Resort Survey	1
-------------------------------------	---

The Economy

New Jersey's Economy by the Numbers	5
The Economic Situation	6
Comparison of Economic Trends in New Jersey and the US	10

Articles and Briefs

2008 State and County Housing Unit Estimates	13
--	----

Labor Area Focus

Regional Analysts' Corner	14
Nonfarm Payroll Employment in New Jersey Labor Areas	15
Civilian Labor Force Data for New Jersey Labor Areas	16

Statistical Section

Indicator Series, 1 to 27, Historical Tables and Charts	S-2 — S-19
Indicator Series, 1 to 27, Annual Averages	S-20
Nonfarm Payroll Employment in New Jersey (seasonally adjusted)	S-21
Nonfarm Payroll Employment in New Jersey (not seasonally adjusted)	S-22
Hours and Earnings of Production/Nonsupervisory Workers	S-26
Comparative US and NJ Civilian Labor Force Trends	S-27
Characteristics of New Jersey's Insured Unemployed	S-28
Sources and Notes	S-29

New Jersey Economic Indicators (ISSN 1064-5942) is published monthly except February (due to annual revisions). The report is prepared with the cooperation of other state and federal agencies by the New Jersey Department of Labor and Workforce Development, Division of Labor Market and Demographic Research. For information, please contact JoAnne Caramelo at the New Jersey Department of Labor and Workforce Development, PO Box 057, Trenton, NJ 08625-0057, phone: (609) 292-2582 or e-mail: joanne.caramelo@dol.state.nj.us.

RESTRICTIONS: All material may be reprinted without permission; however, it would be appreciated if appropriate credit were given.

ON THE INTERNET: Current and recent back issues are available via the *Labor Planning and Analysis* Web site (**lwd.dol.state.nj.us/labor/lpa**)

August Feature Article

2009 Mid-Season Resort Survey

*by Chester Sherman and Michael Dugan, Division of
Labor Market & Demographic Research*

As it did a year ago, the poor economy tops the list of reasons for this summer's lackluster tourist season, according to an informal mid-season survey conducted by the New Jersey Department of Labor and Workforce Development. The ongoing recession, depressed real estate values, tight credit, high unemployment and low consumer confidence were factors that adversely impacted shore tourism for the second straight year. A rain-plagued June and below average weather conditions since then are another reason tourist activity is down along New Jersey's shore resorts through July.

Opinions vary as to whether or not the state's coastal resorts are benefiting from the "staycation" phenomena: a trend some travel experts say is keeping those with financial or employment concerns from traveling to more distant vacation destinations. Since the Jersey Shore is "closer to home" to literally tens of millions within the Mid-Atlantic Region, the state's coastal resort communities may be weathering this atypical summer season somewhat better than more distant vacation destinations. On average, New Jersey, Pennsylvania and New York residents account for 70 to 80 percent of the shore's customer base during the summer months. Although the state's coastal resort communities may be benefiting from their proximity, many shore vacationers are waiting until the last minute to book reservations, watching their wallets more so than ever, and looking to negotiate over prices and fees like never before.

Survey Findings

- Last minute vacation planners appeared to have a reasonable inventory of rental units in most price ranges available at mid-season again this year, particularly in areas that recently experienced the greatest amount of new housing development, and in the Wildwoods where the construction of new condominiums (supply) was particularly brisk earlier in the new millennium. As recently as the late-1990s, it would have been difficult to secure a rental property at the last minute in many resort communities. Some of this mid-season availability is no doubt a reflection of supply having grown faster than demand, particularly during the recent run-up in shore real estate values. In any case, the pace of residential development has slowed significantly along the coast over the past three years.

Rental agents say many clients have cut back on the location and/or amenities they previously had to have — foregoing pricier rentals for less expensive properties a few doors or blocks away from the beach. Others have not been shy about negotiating for a lower rate. In addition, some property owners have abandoned their minimum one-week rental requirement and allowed vacationers to book just a four or five night stay.

- In general, operators of more transient lodgings (hotels, motels and bed & breakfast inns) indicate their business is off through July. Give last minute, budget-conscious vacation planners a rainy forecast and the likely result is shorter stays, less than full occupancy on weekends and slower mid-week periods. It should be noted that the demolition and/or conversion of hotels/motels (more than 120 in the Wildwoods alone) and bed & breakfast inns into condominiums over the past several years is a concern to some officials — particularly in southern Cape May County. In general, new condominiums are more expensive than motel rooms and

tend to rent by the week. Some believe the development of higher priced, amenity-laden condominiums where more affordable motels once stood is hurting restaurants and other resort businesses. However, the reduced supply of motel-style lodgings in these areas may be helping increase occupancy rates for those that remain.

- Rainy weather hurt campgrounds during June, but operators generally were pleased with business in July and advanced reservations for August. Many cited another strong influx of Canadian campers this year but indicated that sales at camp stores are down compared to a year ago. The conversion of some campgrounds into full-season only operations has been of some benefit to those that accommodate the shorter stay camper.

- Over the past several years, there has been a surge in all types of Canadian vacationers (not just campers) largely due to much improved currency exchange rates. Although recent currency exchange rates between the US and Canadian dollars has been less favorable (fluctuating between 7 and 16 cents in 2009 vs. 3-to-5 cents a year ago), it is a big improvement over the 40+-cent difference of just a few years ago. Although Canadian tourists frequent nearly all of the state's coastal resort areas, the greatest concentration tends to vacation in southern Cape May County.

- One of the areas hit hard by the recessionary economy and less than ideal weather conditions this summer are water sports-related businesses; in particular, marinas and recreational boating. Both new and used boat sales, which have been softening over the past several years, weakened further in 2009 and marina operators had more empty boat slips at mid-season. This decline occurred despite a significant drop in fuel costs from a year ago. Fishing conditions have been very good up and down the coast due to a strong run of striped bass, and more recently an increase in the number of legal size summer flounder, but charter boat captains indicate that rainy weather hurt early season business and say fisherman are booking fewer trips so far this year. Although whale and dolphin watching cruises remain popular, some operators reported a dip in ridership that may be only partially due to weather.

- Reports from the coastal region's amusement parks, piers and boardwalk merchants generally reflect the poor state of the economy. Amusement piers and parks that have successfully augmented their business in recent years by accommodating corporate family outings and other large groups, have seen this type of business shrink this summer as companies look to cut costs. Similar to a year ago, those surveyed in this category reported that tourist spending is down and more customers are using promotional items like coupons (e.g. free soda with the purchase of a slice of pizza). The number of businesses using coupons and other incentives to stimulate sales appears to have increased significantly this year.

- Beach tag sales, which in many locales were running behind their levels of a year ago through the end of June, were approaching their year ago levels as July drew to a close due to improved weather conditions. Overall, the pattern of recent years — increasing preseason sale of discount-priced, seasonal beach passes — continued this year.

- In a continuation of recent trends, receipts at the shore's eating and drinking establishments are reported to be down so far this year. Moderately priced, family establishments appear to be faring best overall, but restaurants across many price thresholds appear to be adapting their menus to the new reality – adding value-priced entrees, daily specials and other enticements. Many report that even weekend business is off from levels a year ago. However, business remains brisk at take-out establishments and supermarkets.

- One of the two horse-race tracks in Monmouth County, Monmouth Park in Oceanport, is on par in attendance compared with the same time last year. Their on-track handle is even with last year and total handle has also been pretty steady. They have noticed a slight decrease in attendance on weekdays with a slight increase on weekends, compared with last year. The other race track, Freehold Raceway, does not offer live horse racing during the summer.

- Although their advertising and sponsorship numbers are down for the first time, attendance at the Lakewood Blue Claws professional minor league baseball park is up compared to the same time last year thanks to the “Kids Eat Free” promotion. At a time when Major League Baseball tickets and food prices have soared, fans have discovered an affordable, family entertainment value at the Jersey Shore. While the Blue Claws have stimulated fan attendance in several different ways during their nine-year existence, none has worked better than giving every child a free hot dog, bag of chips, and a 12 oz. soda.

- A setback for Belmar (Monmouth County) merchants was the decision to move the Association of Volleyball Professional’s (AVP) tournament to Ocean City, Maryland this year. Belmar hosted the mid-to-late-June tournament for 16 of the past 18 summers (Seaside Heights in Ocean County hosted in 2006 and 2007). Providers of lodgings, meals and entertainment in these areas previously reported that the four-day tournament stimulated business by attracting over twenty thousand spectators.

- Atlantic City’s eleven gaming venues won a total of \$383 million from gamblers during July 2009, a decrease of 12.7 percent from July 2008. Increased competition from new slot parlors in the Philadelphia area and New York has pinched gaming revenues in Atlantic City.

Conclusion

Resort business owners and local tourism officials say shore tourism has struggled with the effects of a recessionary economy this summer, and weather-related losses during June will be difficult if not impossible to recoup. While the numbers of visitors through July is considered to be down from levels a year ago, many of those surveyed believe it is the average tourist’s spending habits that are having the greatest impact on business this year. Overall, resort business owners and tourism officials are counting on last minute vacation planners to spur a late-season surge in tourist activity.

New Jersey's Economy by the Numbers: August 27, 2009

Comparative Economic Indicators: New Jersey and United States

New Jersey Data (Seasonally adjusted)			Latest Data	Data Series	Page Number	Year-to-Date % change from year ago (Unadjusted)	
Latest Month	Month Ago	Year Ago				NJ	US
\$440,318	\$442,450	\$441,236	1 st Quarter 09	Personal Income (millions)*	----	-0.2	0.8
34,074	31,199	45,945	Jun	New Vehicle Registrations***	S-16	-28.4	-34.5
900	1,033	2,385	Jun	Dwelling Units Authorized**	S-14	-46.8	-49.1
3,936.1	3,930.2	4,058.3	Jul	Nonfarm Payroll Employment (000)	S-6	-3.1	-3.6
3,292.8	3,279.8	3,406.5	Jul	Private Sector Employment (000)	S-6	-3.7	-4.4
144.3	140.9	164.4	Jul	Construction Employment (000)	S-6	-12.6	-13.0
2775.9	272.8	300.0	Jul	Manufacturing Employment (000)	S-8	-9.4	-10.6
256.0	256.6	268.8	Jul	Financial Activities Employment (000)	S-10	-5.3	-4.5
422.2	419.6	245.2	Jul	Total Unemployment (000)	S-2	72.1	69.4
9.3	9.2	5.5	Jul	Total Unemployment Rate (%)	S-4	----	----
206.4	225.5	128.5	Jul	Insured Unemployment Volume (000)	S-18	69.7	97.2
5.3	5.8	3.3	Jul	Insured Unemployment Rate (%)	S-18	----	----
41.4	41.4	41.6	Jul	Average Factory Workweek (hours)**	S-26	-1.9	-3.8
18.38	18.53	17.88	Jul	Average Factory Hourly Earnings**	S-26	3.7	2.6
760.93	767.4	747.38	Jul	Average Factory Weekly Earnings**	S-26	1.8	-1.3

Notes: See pages S-29 to S-32 for notes on indicators' series. (Private service-providing data are found in 13-month tables on page S-21.)

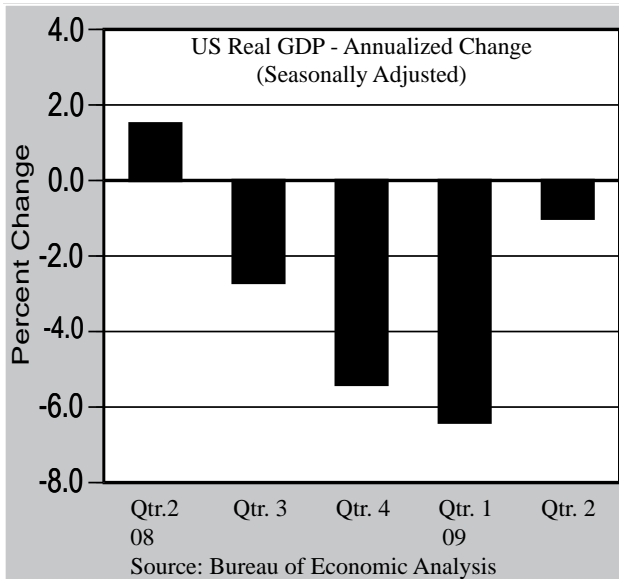
* Latest Month - 1st Qtr. 2009; Month Ago - 4th Qtr. 2008; Year Ago - 1st Qtr. 2008 (annualized data)

** Not seasonally adjusted.

*** Includes only total new cars and new light trucks/vans (weight class 0-10,000 lbs.) registered in NJ.

Economic Situation: The Nation

Recent economic news and reports have created a number of positive expectations. The rate of decline in employment and output is slowing while the stock market has been on an impressive run. There also have been positive trends in residential real estate. The Federal Reserve Board recently described the economy as “leveling out”. Interest rates are expected to remain low going forward.

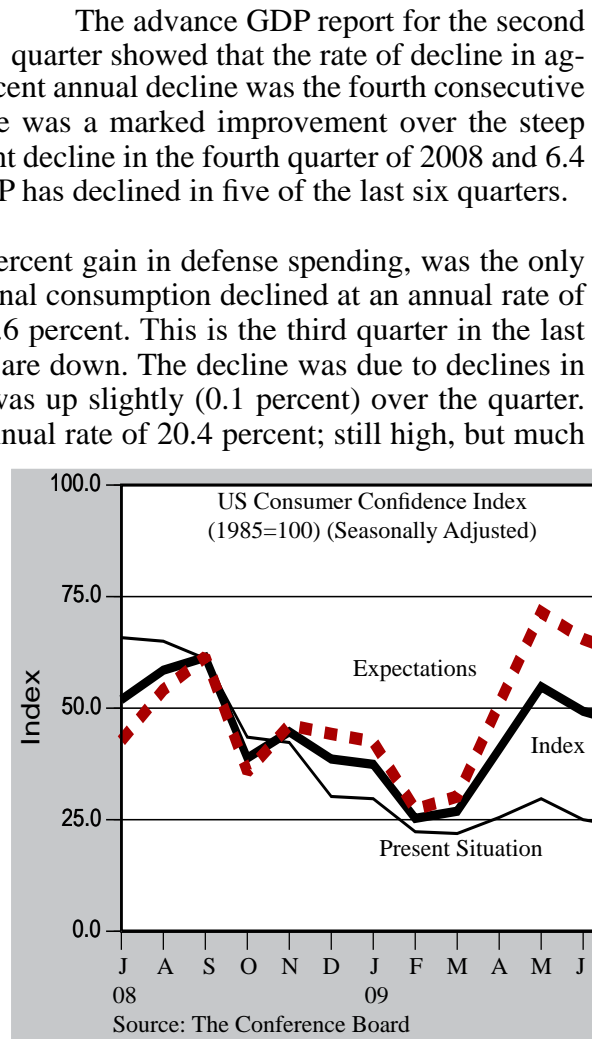


Still, there are a significant number of troubling economic trends that will have to be reversed for a sustainable recovery to take place. Unemployment is expected to rise through the end of the year, raising the possibility of more mortgage foreclosures and setbacks in residential real estate. In fact, mortgage foreclosures were up again in July. Consumer confidence is weak as a result of continued employment declines and negative growth in personal income. In July, over-the-month retail sales were effectively unchanged. Nonfarm payroll employment is still declining albeit at a slower rate.

The advance GDP report for the second quarter showed that the rate of decline in aggregate output slowed dramatically. The 1.0 percent annual decline was the fourth consecutive quarterly decline. However, the modest decline was a marked improvement over the steep declines of the previous two quarters (5.4 percent decline in the fourth quarter of 2008 and 6.4 percent decline in the first quarter of 2009). GDP has declined in five of the last six quarters.

Government expenditures, led by a 13.3 percent gain in defense spending, was the only component of GDP with positive growth. Personal consumption declined at an annual rate of 1.2 percent, following first quarter growth of 0.6 percent. This is the third quarter in the last four where personal consumption expenditures are down. The decline was due to declines in expenditures on goods. Spending on services was up slightly (0.1 percent) over the quarter. Business investment spending declined at an annual rate of 20.4 percent; still high, but much lower than the 50.5 percent decline seen in the first quarter. Continued weaknesses in residential investment and inventory liquidation contributed to the decline.

Consumer confidence, measured by both the Conference Board and the Reuters/Michigan survey, continued to decline in July, after gains in April and May. In addition, consumer confidence unexpectedly declined in August, according to results from the Reuters/University of Michigan Survey. The August reading was 63.2, down from 66.0 in July. Weak consumer confidence, caused by a weak labor market, declining personal income, and a high level of mortgage foreclosures, is an obstacle to sustainable economic recovery.

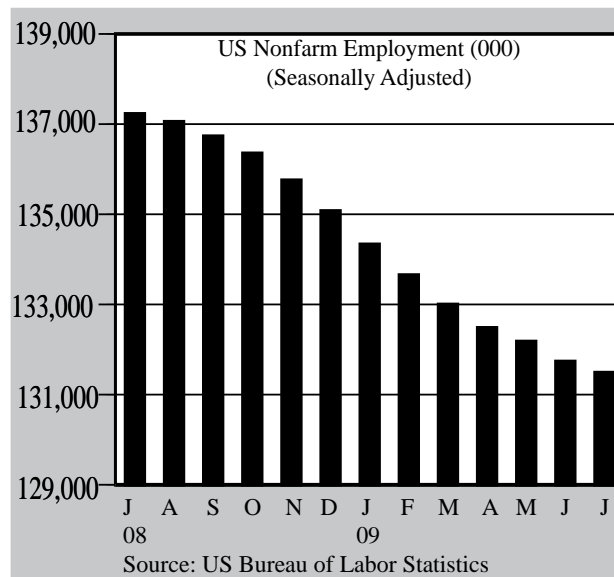


Economic Situation: The Nation

July retail sales were disappointing. July sales for retail and food services were down by 0.1 percent from June and 8.3 percent from last July. Motor vehicle and parts sales were up by 2.4 percent. Building material and gasoline sales were each down more than 2.0 percent. Real personal income has declined in each of the first six months of this year.

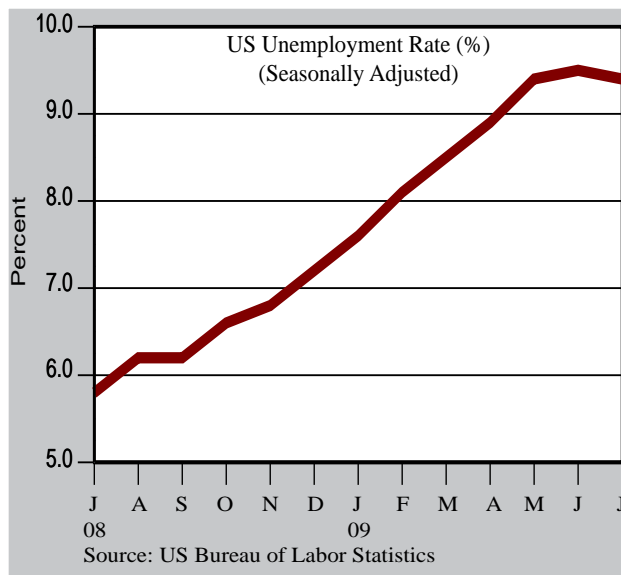
The Bureau of Labor Statistics (BLS) reported that prices, reflecting the overall weakness in the economy in July, were essentially unchanged. However, over the year, prices were down 2.1 percent, the largest over-the-year decline in 59 years. The decline was led by a sharp decline in energy prices.

The jobs report for July was well received. Nonfarm payroll employment declined by 247,000, the smallest decline since August of last year when 175,000 jobs were lost. Over the last three months, employment losses have averaged 331,000 a month, down sharply from the average of 645,000 jobs lost each month from last November through this April. Still, the economy is experiencing job losses and not the job expansion necessary to support sustained economic growth. Most analysts do not expect to see a recovery in the job market before next year. Year to date, nonfarm payroll employment is down 3.6 percent.



Employment losses continued to be widespread. The largest employment losses occurred in construction (-76,000) and manufacturing (-52,000). Despite overall losses some sectors did experience payroll gains. Modest growth occurred in education and health services (+17,000), leisure and hospitality (+9,000), other services (+2,000), and government (+7,000).

July's national unemployment rate, 9.4 percent, was effectively unchanged from the June rate of 9.5 percent. Declining labor force participation may somewhat explain the slight July decline. In July, the labor force participation rate declined to 65.5 percent, down from 65.7



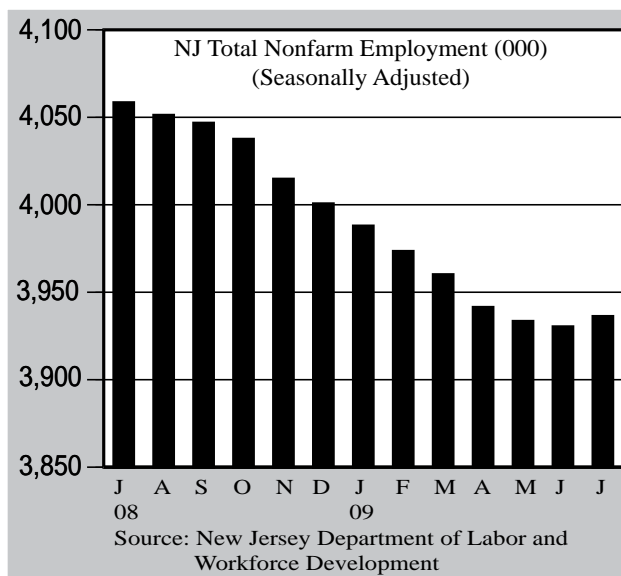
percent in June. The labor force declined by 422,000 residents. The unemployment rate for males (9.8% in July) continued to significantly exceed the female rate (7.5%).

The National Association of Realtors report on existing home sales for July was extremely positive. For the month, sales were up 7.2 percent and 5.0 percent over July a year ago. For the first time in five years, existing home sales have increased for four months in a row. July's monthly increase is the largest in 23 years. The inventory of unsold homes, 9.4 months, is still high but down from the double digit levels of late last year.

Economic Situation: The State

The New Jersey economy, like the national economy, is finding recovery slow and difficult to sustain. In July, there were positive developments in payroll employment and the unemployment rate remained lower than the national rate. However, the state saw a sharp increase in mortgage foreclosures not for economic reasons but due to administrative lags in

processing and recording. The bottom line is that mortgage foreclosures have been occurring at a faster rate than was recognized.



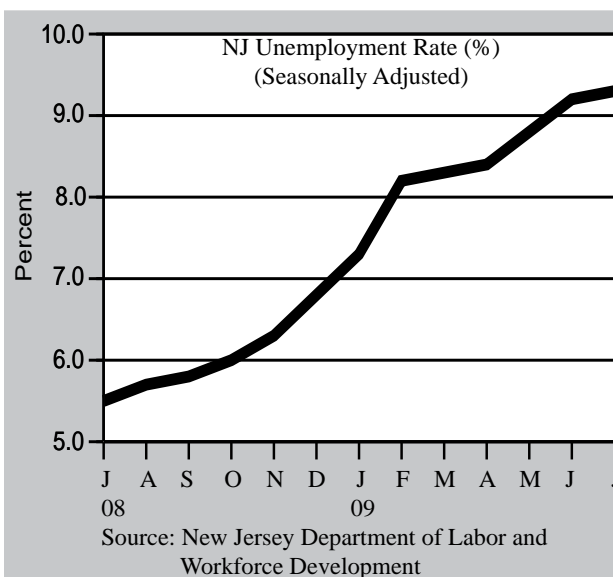
In July, nonfarm payroll employment increased by 5,900 jobs, the first monthly employment gain since January of 2008. For the month, private sector job gains of 13,000 more than offset the loss of 7,100 jobs in the public sector. Leisure and hospitality added the most jobs, 6,200, with growth in both arts, entertainment, and recreation and accommodation and food services. Construction and manufacturing rebounded from several months of large job losses with the addition of 3,400 and 3,100 jobs, respectively. Professional and business services rebounded with the addition of 3,200 jobs.

Trade, transportation, and utilities lost 4,500 jobs, with most of the loss (-2,600) occurring in wholesale trade. Education and health services suffered a modest employment loss of 500 jobs. Since July of last year, the sector has added 6,100 jobs. With a gain of 3,900 since last July, other services was the only other sector to add jobs over the year.

In July, New Jersey's unemployment rate increased to 9.3 percent, up slightly from 9.2 percent in June. The New Jersey rate is just below the national rate of 9.4 percent. The state's labor force participation rate increased to 67.1 percent in July, up from 66.9 percent in June. As a result, the labor force increased by 12,600 while the number of employed residents increased by 10,000. The number of unemployed was up by 2,600.

The US unemployment rate increased from 5.8 percent in July 2008 to 9.4 percent this July, an increase of 3.6 percentage points. Over the same period, New Jersey's unemployment rate rose from 5.5 percent to 9.3 percent, an increase of 3.8 percentage points.

The unemployment rate increased in all states from July of last year illustrating that no state has been immune to the current downturn. Michigan, impacted by weakness and uncertainty in automobile manufacturing, had the nation's highest unemployment rate at 15.0 percent. Rhode Island had the second highest rate at 12.7 percent. However, fifteen states, plus the District of Columbia, had a double digit unemployment rate in July.



Economic Situation: The State

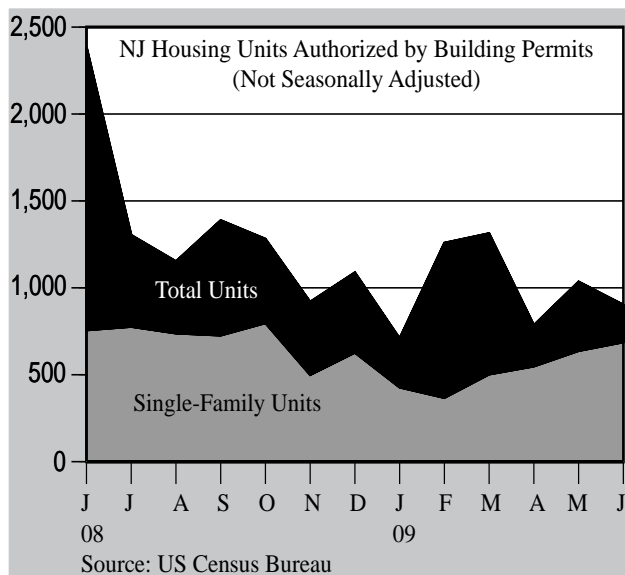
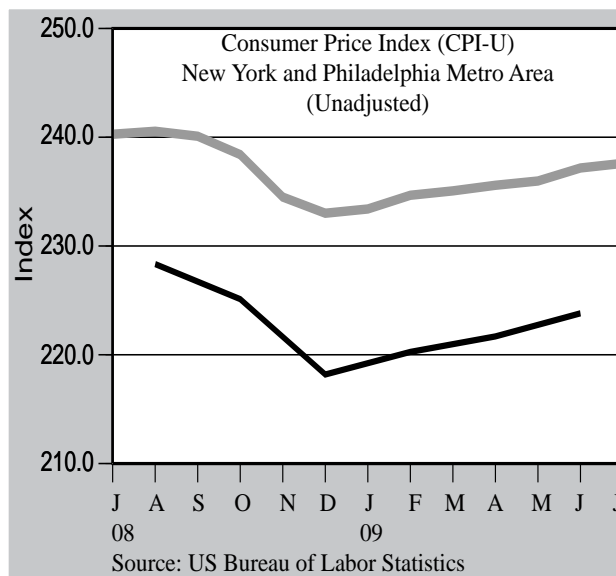
All four of the states most impacted by the subprime mortgage meltdown – California, Florida, Michigan, and Nevada – had double digit unemployment in July of 2009. The unemployment rates in New Jersey’s neighboring states of Delaware, New York and Pennsylvania were 8.2 percent, 8.6 percent, and 8.5 percent, respectively

Weak aggregate demand has resulted in declining prices in New Jersey and the region. Like the nation, consumer prices declined over the year in both the southern New Jersey/Philadelphia region and northern New Jersey/New York regions. The Philadelphia region, where prices over the year were down by 2.0 percent, had the larger decline. Prices were down 0.6 percent in the northern region. Nationally, prices were down by 1.4 percent.

In July, New Jersey mortgage foreclosure activity increased by 49.3 percent from June and by 39.9 percent over the year. Nationally, there was one foreclosure for every 355 households while New Jersey had one for every 541 households. The increase in foreclosure activity was the result of the elimination of a large backlog of foreclosure activity. As a result, foreclosure activity in earlier months was understated while July levels are overstated.

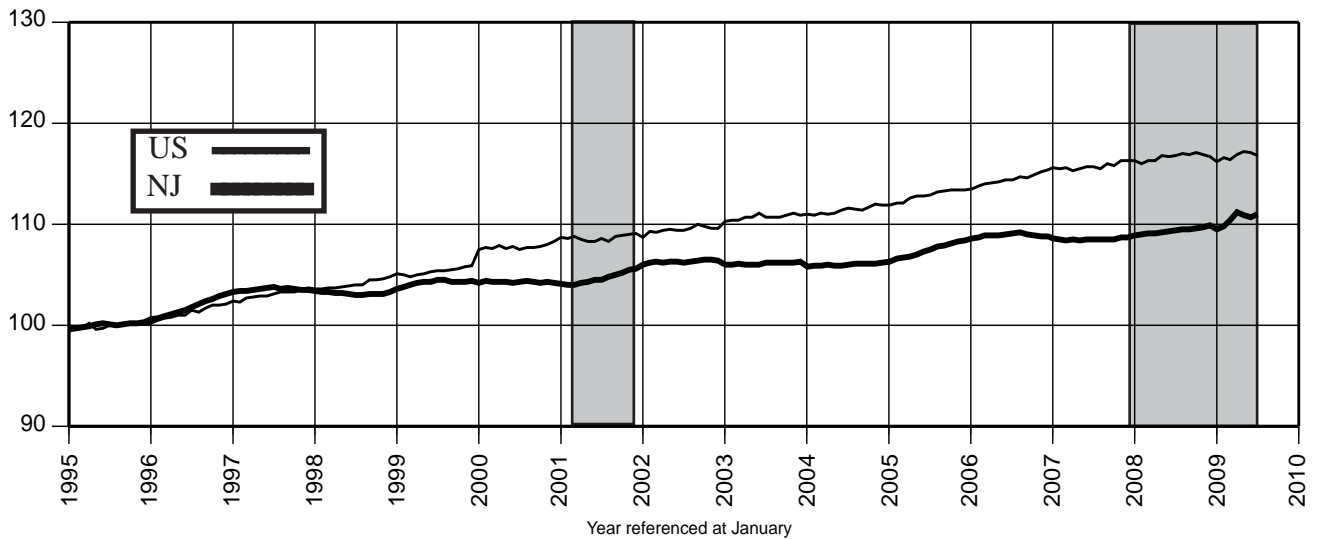
The level of mortgage foreclosures continues to be a serious problem both nationally and in New Jersey. A high level of foreclosures creates a surplus of available housing, deflates housing prices, and reduces the need for new housing construction.

In June, New Jersey’s total of 900 building permits was down from 1,033 in May. Year-to-date, building permits are down 47 percent from last June. In June, single family building permits were up in New Jersey but a large decline in multi-family housing resulted in an overall decline. In the Northeast, building permits were down by 5.2 percent over the month and by 45.0 percent from a year ago. Both the Northeast and South experienced declines in permit activity in July. The West and Midwest experienced gains.

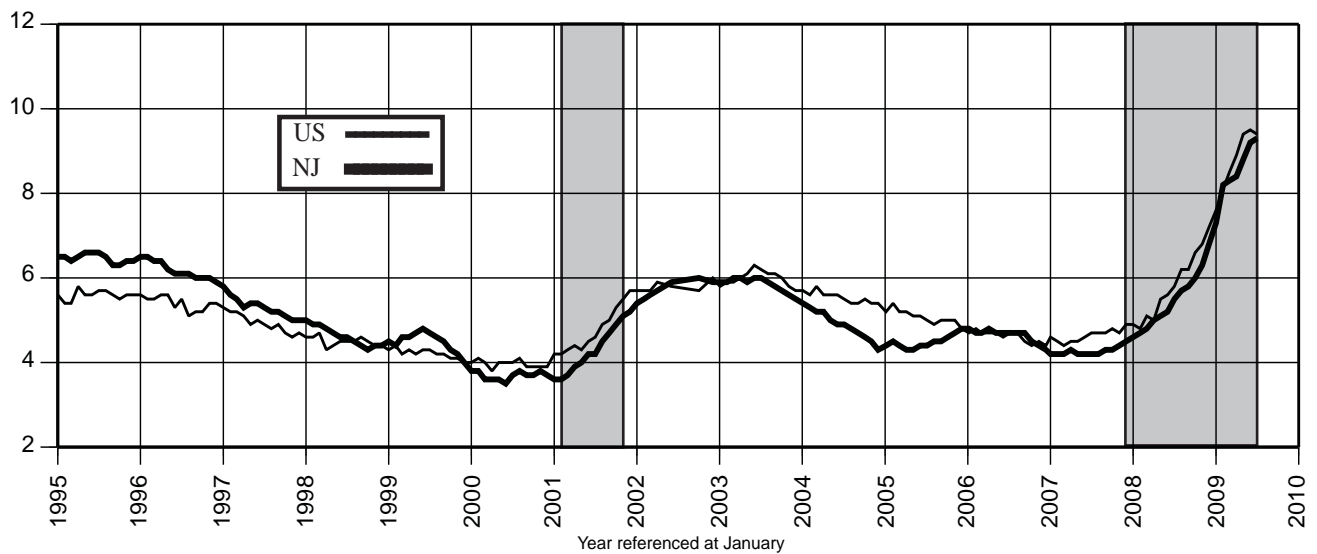


Like the nation, there is a sharp rebound in existing home sales in the Northeast. For July, existing home sales were up 13.4 percent in the region, almost double the national increase. Sales were up 3.3 percent over July of last year. For the region, the July seasonally adjusted, annualized rate of 930,000 units, is up sharply from 690,000 in March. If this trend continues, then there will also be a rebound in building permits and other residential construction indicators.

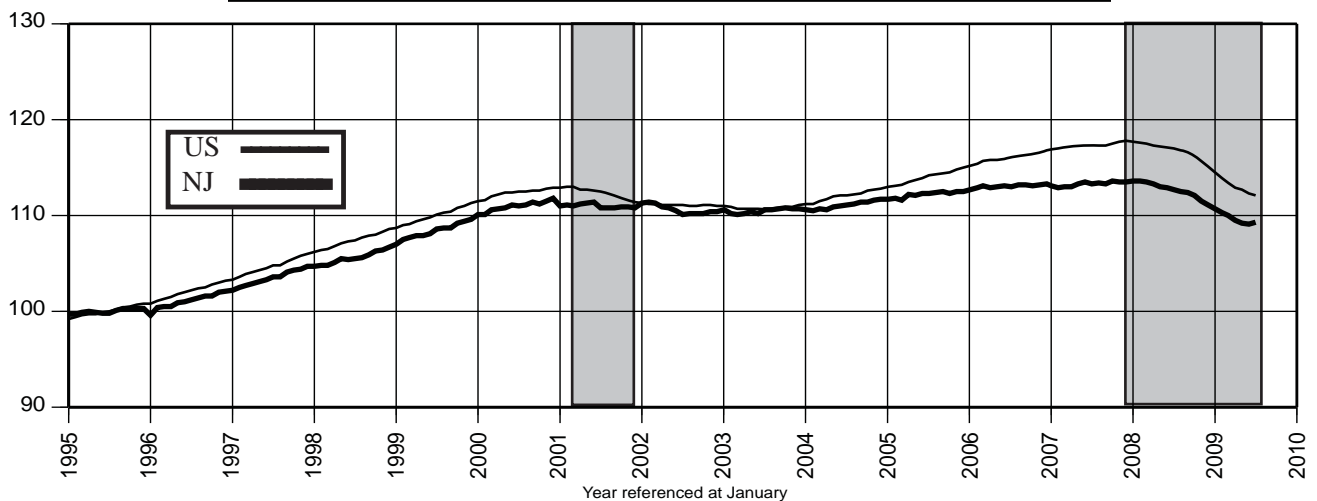
Civilian Labor Force (1995=100)



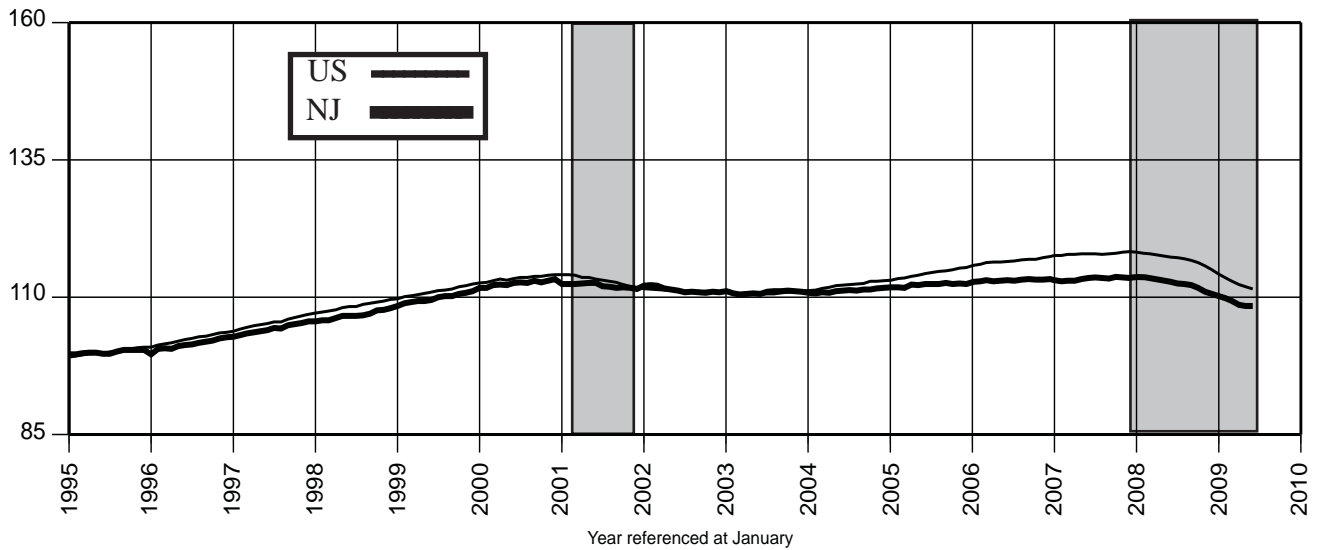
Unemployment Rate (%)



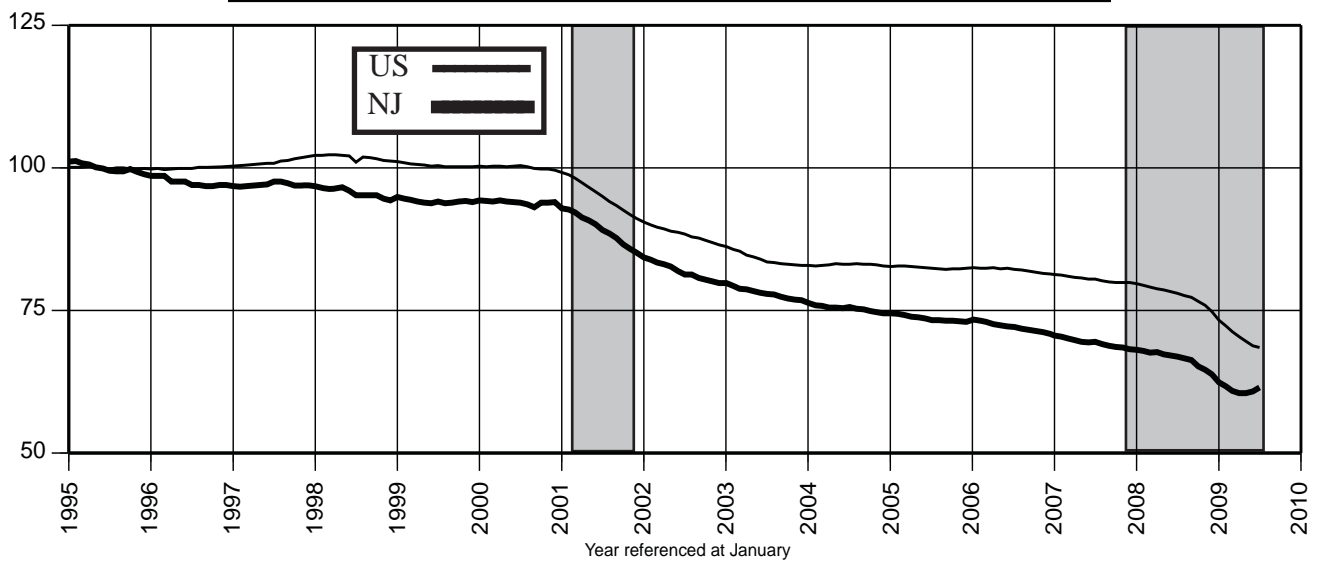
Nonfarm Payroll Employment (1995=100)



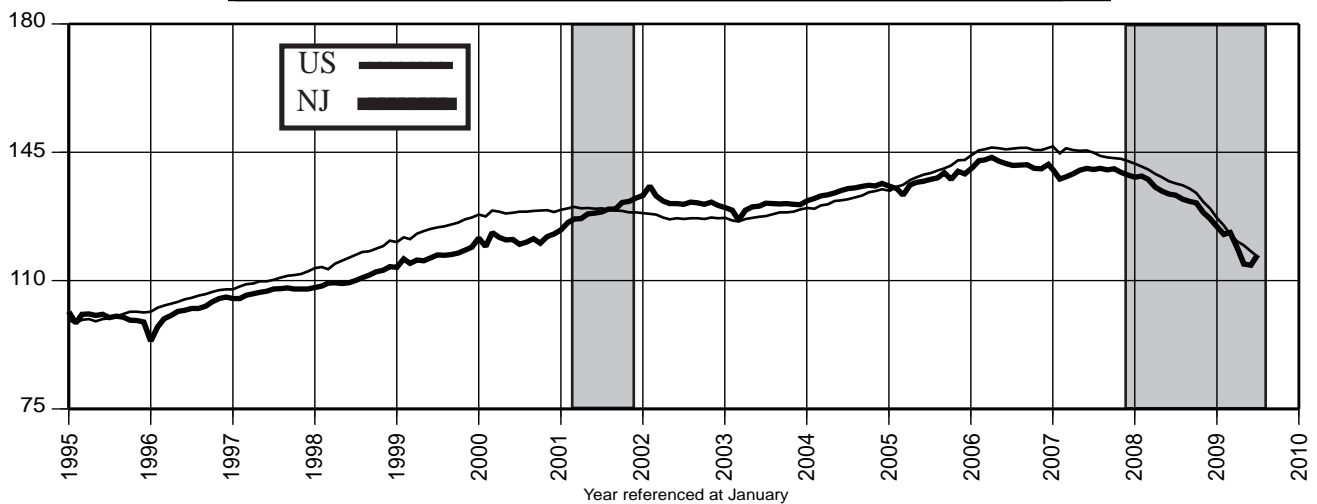
Private Sector Employment (1995=100)



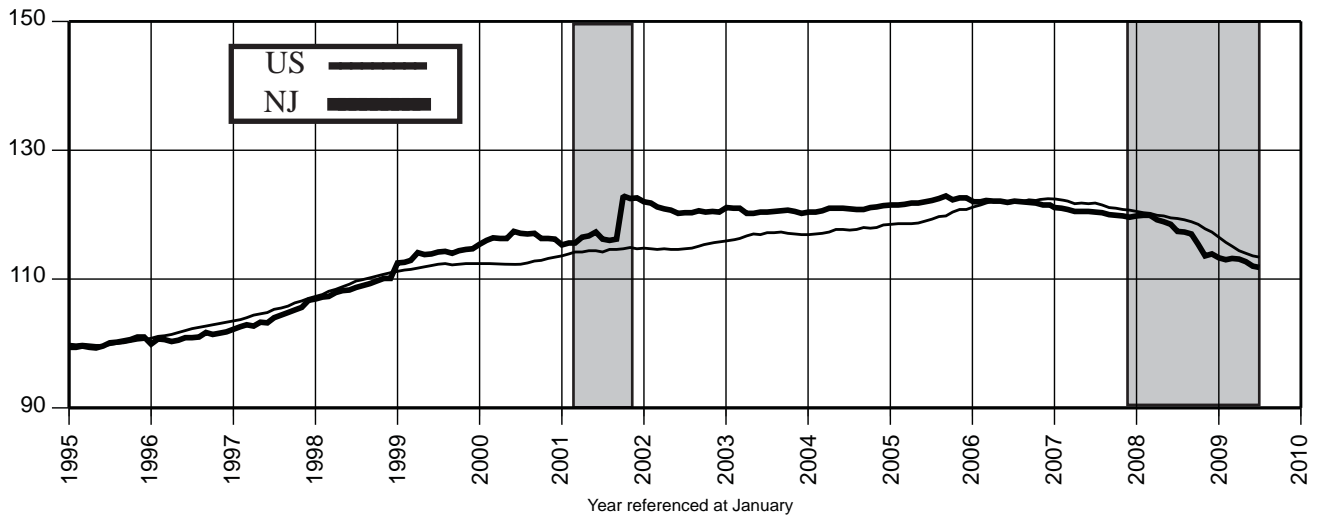
Manufacturing Employment (1995=100)



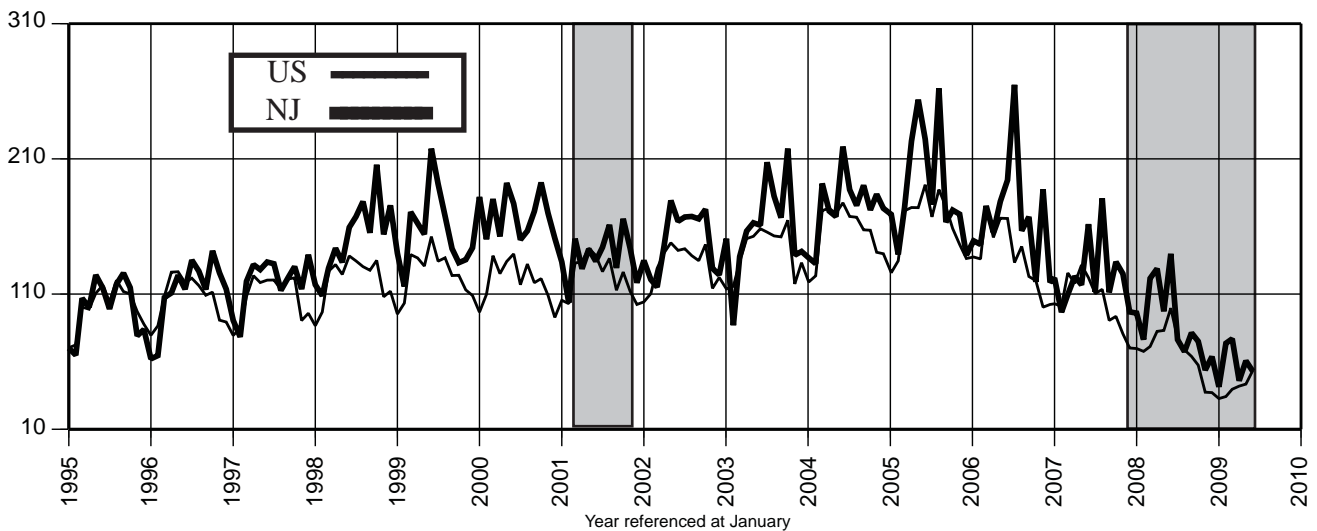
Construction Employment (1995=100)



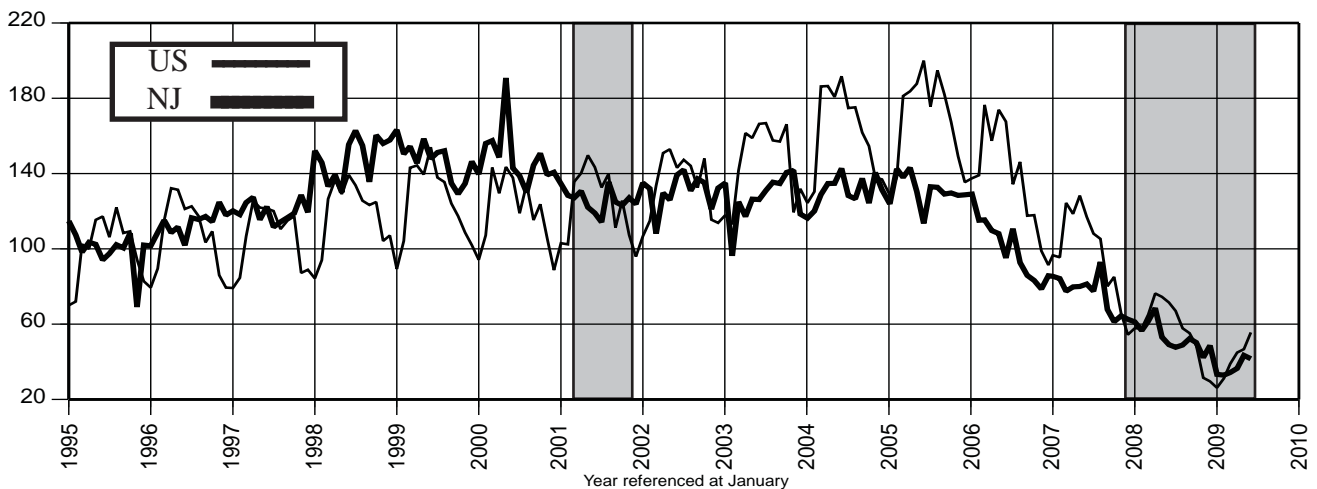
Financial Activities Employment (1995=100)



Total Dwelling Units Authorized (1995=100)-Unadj.



Single Family Dwelling Units Authorized (1995=100)-Unadj.



Economic Brief

2008 State and County Housing Unit Estimates

The US Census Bureau released its 2000-2008 state and county housing unit estimates on August 6, 2009. According to the estimates, New Jersey had the nation's eleventh largest number of housing units — 3,517,293, as of 2008. Its net gain of 207,014 housing units since the 2000 Census ranked 22nd among the nation's 50 states. New Jersey's 6.3 percent increase between 2000 and 2008 was faster than most northeastern states. Total housing units grew by 4.7 percent and 3.9 percent in Pennsylvania and New York, respectively; and by 11.4 percent in the nation as a whole over the past eight years.

New Jersey's 2007-2008 annual increase of 17,479 units was the lowest so far in this decade, reflecting the state's recent economic downturn. The state's annual growth of housing units peaked at the 2005-2006 period, with a gain of 29,576 units. Nationally, the 1.14 million unit increase in 2007-2008 was also lower than any other single-year increase in this decade.

Ocean County added more housing units (26,097) than any other county in New Jersey between 2000 and 2008. The numeric growth of housing units (14,000 units or more) in Hudson, Monmouth, Middlesex and Burlington counties was also substantial. Together, these five counties accounted for 42.3 percent of the state's total housing unit increase. Salem County added the least number of housing units (1,443) during the recent eight years period.

Cape May (12.9%) and Gloucester (12.4%) were the fastest growing counties in terms of the rate of housing unit increase. Passaic County's 1.3 percent growth rate since 2000 was the state's slowest.

The Census Bureau estimates housing unit change since the last census based on building permits, mobile home shipments, and estimates of housing unit loss.

The 2000-2008 housing unit estimates for the nation's 50 states and New Jersey's 21 counties are posted on the New Jersey Labor Market Information web site: http://lwd.dol.state.nj.us/labor/lpa/dmograph/est/est_index.html. For information about housing unit estimates for New Jersey, contact the New Jersey Department of Labor and Workforce Development, Division of Labor Market and Demographic Research, P. O. Box 388, Trenton, New Jersey 08625-0388, telephone 609-292-0076, e-mail Sen-Yuan.Wu@dol.state.nj.us.

Northern Region

Bausch & Lomb is locating its new Global Pharmaceutical division headquarters in Madison (Morris County) creating 70 positions.

Recreational Equipment Incorporated, a national retail cooperative specializing in outdoor equipment, plans to open its second New Jersey location in East Hanover (Morris County) in late September 2009. The company anticipates hiring 40 to 60 workers.

Sonic opened its second drive-in restaurant in North Jersey in Totowa (Passaic County) with 100 employees.

Ashley Furniture Homestore opened a location in Paramus (Bergen County), creating 40 new jobs.

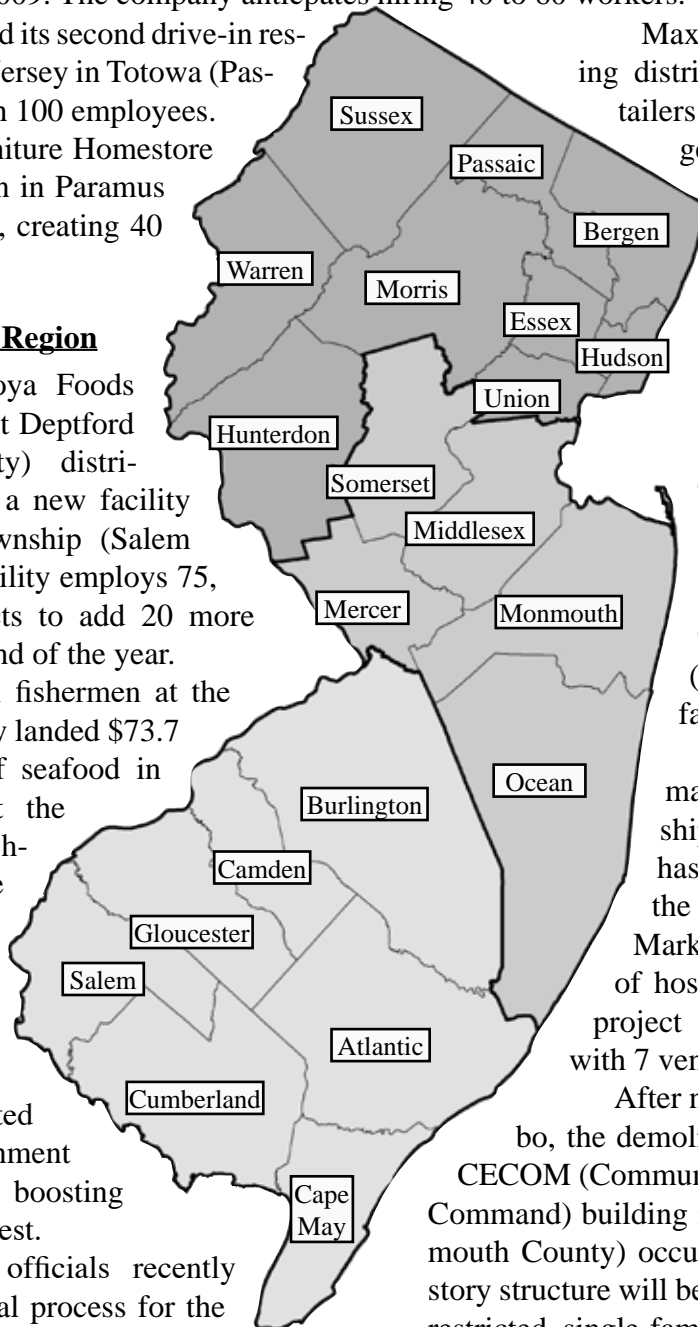
Max Rave, LLC, a clothing distribution center for retailers located in North Bergen (Hudson County) reduced its workforce by 36 jobs due to consolidation of operations in Verona, California.

Southern Region

In July, Goya Foods relocated its West Deptford (Camden County) distribution center to a new facility in Oldmans Township (Salem County). The facility employs 75, and Goya expects to add 20 more workers by the end of the year.

Commercial fishermen at the Port of Cape May landed \$73.7 million worth of seafood in 2008 making it the fourth-largest fishing port in the nation. Scallops accounted for more than 75 percent of the total catch and fishermen credited federal government regulations with boosting the shellfish harvest.

Mt. Holly officials recently began the renewal process for the township's Urban Enterprise Zone (UEZ). This designation must be renewed every 16 years. Qualified businesses located in UEZs receive tax incentives. The program is administered by the NJ Economic Development Authority.



Central Region

Wal-Mart plans to open its fourth New Jersey superstore offering a full-service grocery along Route 9 in Lacey Township (Ocean county) in the fall creating 450 jobs.

A former supermarket in Ewing Township (Mercer County) has been converted to the Ewing Indoor Flea Market with the potential of hosting 48 vendors. The project opened in July 2009 with 7 vendors.

After nearly 15 years in limbo, the demolition of the old Army CECOM (Communications - Electronics Command) building in Tinton Falls (Monmouth County) occurred in July. The six-story structure will be replaced by 151 age-restricted, single-family homes.

In Trenton (Mercer County), the site of a former Magic Marker factory which was vacant for several decades is being developed with 42 affordable homes. The project is funded by federal and state grants.

Labor Area Focus (cont.)

Labor Area Nonfarm Payroll Employment

(not seasonally adjusted)

	2008						2009						
	Jul	Aug	Sep	Oct	Nov	Dec	Jan	Feb	Mar	Apr	May	Jun	Jul
Atlantic City Labor Area (Atlantic County)													
Total Nonfarm	152.1	150.6	149.8	147.5	146.4	144.7	141.9	139.7	140.3	139.6	141.1	143.9	146.2
Total Private Sector	130.5	129.0	127.6	125.0	123.8	122.8	119.8	117.5	118.0	118.1	119.7	122.6	125.4
Government	21.6	21.6	22.2	22.5	22.6	21.9	22.1	22.2	22.3	21.5	21.4	21.3	20.8
Bergen-Passaic Labor Area (Bergen & Passaic counties)													
Total Nonfarm	655.7	651.2	655.8	660.2	659.7	656.5	639.5	633.5	635.6	639.1	640.9	649.2	640.8
Total Private Sector	577.5	575.6	575.3	574.6	572.8	569.5	556.4	548.2	550.0	552.9	557.3	564.1	562.2
Government	78.2	75.6	80.5	85.6	86.9	87.0	83.1	85.3	85.6	86.2	83.6	85.1	78.6
Camden Labor Area (Burlington, Camden & Gloucester counties)													
Total Nonfarm	533.5	530.9	532.8	537.4	534.5	530.0	515.6	511.5	514.7	517.2	523.8	522.8	508.0
Total Private Sector	452.4	450.7	447.5	447.1	443.8	439.3	426.0	422.0	424.5	427.1	434.3	431.8	427.2
Government	81.1	80.2	85.3	90.3	90.7	90.7	89.6	89.5	90.2	90.1	89.5	91.0	80.8
Edison Labor Area (Middlesex, Monmouth, Ocean & Somerset counties)													
Total Nonfarm	1,047.1	1,040.9	1,029.2	1,034.6	1,030.2	1,020.6	979.4	979.7	985.1	990.8	1,002.1	1,025.8	1,034.8
Total Private Sector	904.6	901.0	885.4	884.0	878.6	869.8	832.1	830.1	834.7	840.3	850.6	875.2	894.6
Government	142.5	139.9	143.8	150.6	151.6	150.8	147.3	149.6	150.4	150.5	151.5	150.6	140.2
Jersey City Labor Area (Hudson County)													
Total Nonfarm	242.9	241.6	246.2	247.9	247.0	246.9	242.2	241.3	242.0	241.7	241.2	242.2	237.1
Total Private Sector	203.8	203.8	206.0	204.9	203.6	203.1	200.0	198.1	198.9	198.8	199.4	200.7	198.2
Government	39.1	37.8	40.2	43.0	43.4	43.8	42.2	43.2	43.1	42.9	41.8	41.7	38.9
Newark Labor Area (Essex, Hunterdon, Morris, Sussex & Union counties)													
Total Nonfarm	1,032.9	1,027.4	1,026.5	1,033.8	1,034.1	1,032.3	1,006.2	1,007.6	1,006.1	1,014.6	1,021.5	1,030.6	1,019.4
Total Private Sector	871.1	868.0	863.5	866.3	866.9	865.2	841.4	840.4	839.7	846.0	853.7	862.2	858.5
Government	161.8	159.4	163.0	167.5	167.2	167.1	164.8	167.2	166.4	168.6	167.8	168.4	160.9
Ocean City Labor Area (Cape May County)													
Total Nonfarm	56.0	55.2	48.4	39.9	38.4	37.8	33.0	32.9	33.5	36.5	42.2	49.1	51.6
Total Private Sector	46.8	45.9	38.3	30.7	29.4	28.9	23.8	23.7	24.3	27.2	32.4	39.0	42.4
Government	9.2	9.3	10.1	9.2	9.0	8.9	9.2	9.2	9.2	9.3	9.8	10.1	9.2
Salem Labor Area (Salem County)													
Total Nonfarm	21.7	21.7	22.6	23.0	22.4	22.5	22.1	22.2	22.4	22.8	22.9	22.9	23.5
Total Private Sector	18.2	18.2	17.9	18.1	17.5	17.6	17.3	17.4	17.5	17.9	18.0	18.0	18.7
Government	3.5	3.5	4.7	4.9	4.9	4.9	4.8	4.8	4.9	4.9	4.9	4.9	4.8
Trenton-Ewing Labor Area (Mercer County)													
Total Nonfarm	241.0	238.6	238.8	240.6	240.1	240.0	235.1	235.5	236.3	237.9	238.4	239.9	236.2
Total Private Sector	175.5	174.5	174.2	175.5	174.9	174.8	170.1	170.5	170.8	172.4	173.9	175.3	173.0
Government	65.5	64.1	64.6	65.1	65.2	65.2	65.0	65.0	65.5	65.5	64.5	64.6	63.2
Vineland-Millville-Bridgeton Labor Area (Cumberland County)													
Total Nonfarm	60.0	60.0	61.7	62.5	62.2	62.2	60.8	60.7	61.0	61.3	61.4	61.7	59.1
Total Private Sector	46.9	46.9	47.1	47.1	46.7	46.7	45.5	45.1	45.3	45.4	45.7	46.1	45.8
Government	13.1	13.1	14.6	15.4	15.5	15.5	15.3	15.6	15.7	15.9	15.7	15.6	13.3
Warren Labor Area (Warren County)													
Total Nonfarm	37.2	36.9	38.7	38.4	39.1	38.6	37.4	37.6	37.9	38.2	38.6	37.9	37.4
Total Private Sector	32.6	32.4	32.4	33.3	34.0	33.3	31.5	31.4	31.7	31.9	32.2	31.8	31.3
Government	3.8	3.7	5.5	5.6	5.6	5.8	5.9	6.2	6.2	6.3	6.4	6.1	6.1

Estimates for the Ocean City, Salem and Warren Labor Areas are independently estimated by the New Jersey Department of Labor and Workforce Development.

Labor Area Focus (cont.)**Labor Area Civilian Labor Force**

(seasonally adjusted)

	2008						2009						
	Jul	Aug	Sep	Oct	Nov	Dec	Jan	Feb	Mar	Apr	May	Jun	Jul
Atlantic City Labor Area (Atlantic County)													
Labor Force	134.9	135.3	135.6	136.1	136.6	136.6	136.6	135.8	137.0	137.3	137.0	136.4	136.5
Employment	125.9	125.3	125.3	124.9	124.7	124.0	124.2	121.8	122.3	121.7	120.7	119.4	120.6
Unemployment Volume	9.0	10.0	10.2	11.1	11.9	12.6	12.4	14.0	14.7	15.6	16.3	17.0	15.9
Unemployment Rate (%)	6.7	7.4	7.6	8.2	8.7	9.2	9.1	10.3	10.7	11.4	11.9	12.5	11.6
Bergen-Passaic Labor Area (Bergen & Passaic Counties)													
Labor Force	718.2	719.0	718.2	718.1	715.6	718.1	721.3	722.7	728.2	733.6	731.3	731.6	732.3
Employment	681.2	679.8	678.6	676.5	673.0	669.6	670.3	664.4	668.6	672.8	667.9	664.4	666.2
Unemployment Volume	37.0	39.3	39.6	41.6	42.6	48.6	51.0	58.3	559.6	60.8	63.4	67.2	66.1
Unemployment Rate (%)	5.2	5.5	5.5	5.8	6.0	6.8	7.1	8.1	8.2	8.3	8.7	9.2	9.0
Camden Labor Area (Burlington, Camden & Gloucester Counties)													
Labor Force	660.0	661.8	662.3	663.8	661.0	662.0	659.2	657.6	663.8	668.9	672.3	663.9	656.1
Employment	624.5	623.3	622.7	621.1	616.8	613.4	611.4	604.2	607.7	610.2	611.0	601.2	596.9
Unemployment Volume	35.5	38.6	39.5	42.8	44.2	48.7	47.8	53.4	56.1	58.7	61.3	62.7	59.2
Unemployment Rate (%)	5.4	5.8	6.0	6.4	6.7	7.3	7.3	8.1	8.5	8.8	9.1	9.4	9.0
Edison Labor Area (Middlesex, Monmouth, Somerset & Ocean Counties)													
Labor Force	1,200.8	1,201.2	1,199.1	1,200.0	1,195.3	1,202.1	1,192.7	1,198.9	1,204.8	1,210.4	1,209.5	1,212.7	1,228.8
Employment	1,141.3	1,137.9	1,134.9	1,133.6	1,127.0	1,122.3	1,109.3	1,104.5	1,108.9	1,113.2	1,108.7	1,107.1	1,124.4
Unemployment Volume	59.5	63.3	64.2	66.4	68.2	79.8	83.4	94.4	95.9	97.2	100.8	105.6	104.4
Unemployment Rate (%)	5.0	5.3	5.4	5.5	5.7	6.6	7.0	7.9	8.0	8.0	8.3	8.7	8.5
Jersey City Labor Area (Hudson County)													
Labor Force	294.9	295.7	295.4	295.9	295.3	296.3	296.3	297.3	299.9	302.9	302.0	301.3	301.2
Employment	276.5	275.8	275.3	274.3	273.1	271.4	272.3	269.6	271.3	273.1	271.1	269.6	270.3
Unemployment Volume	18.4	19.9	20.2	21.5	22.2	24.9	24.0	27.7	28.6	29.8	30.9	31.7	30.9
Unemployment Rate (%)	6.3	6.7	6.8	7.3	7.5	8.4	8.1	9.3	9.5	9.8	10.2	10.5	10.3
Newark-Union Labor Area (Essex, Hunterdon, Morris, Sussex & Union Counties)													
Labor Force	1,070.4	1,072.2	1,070.7	1,071.2	1,069.2	1,073.3	1,073.0	1,078.5	1,083.0	1,092.3	1,092.1	1,091.4	1,095.2
Employment	1,013.7	1,012.0	1,009.4	1,006.4	1,002.6	999.5	996.7	992.5	995.6	1,004.3	999.7	993.8	997.7
Unemployment Volume	56.7	60.3	61.3	64.9	66.7	73.8	76.3	86.0	87.4	88.0	92.4	97.6	97.5
Unemployment Rate (%)	5.3	5.6	5.7	6.1	6.2	6.9	7.1	8.0	8.1	8.1	8.5	8.9	8.9
Ocean City Labor Area (Cape May County)													
Labor Force	56.8	57.4	58.1	58.9	59.5	59.8	56.8	56.8	57.0	56.5	57.7	55.6	54.3
Employment	52.4	52.5	53.0	53.4	54.0	54.2	51.5	51.0	51.1	50.4	51.4	48.6	47.6
Unemployment Volume	4.4	4.9	5.1	5.5	5.5	5.6	5.3	5.8	5.9	6.1	6.3	7.0	6.7
Unemployment Rate (%)	7.8	8.5	8.7	9.3	9.2	9.3	9.3	10.2	10.4	10.8	10.9	12.6	12.3
Salem Labor Area (Salem County)													
Labor Force	31.7	31.8	31.6	31.8	31.5	31.6	31.8	31.8	31.9	32.0	32.4	31.8	31.5
Employment	29.7	29.6	29.6	29.4	29.1	29.1	29.1	28.8	28.7	28.9	28.7	28.2	28.2
Unemployment Volume	2.0	2.2	2.0	2.4	2.4	2.6	2.7	3.0	3.2	3.1	3.7	3.6	3.3
Unemployment Rate (%)	6.4	6.8	6.4	7.5	7.7	8.1	8.5	9.4	10.0	9.7	11.4	11.3	10.5
Trenton-Ewing Labor Area (Mercer County)													
Labor Force	200.2	199.8	199.9	199.8	199.5	201.3	199.8	200.6	202.3	203.8	202.7	201.7	201.7
Employment	190.5	189.6	189.6	189.0	188.5	188.4	187.3	186.4	187.6	188.6	187.0	186.0	186.7
Unemployment Volume	9.7	10.2	10.3	10.8	11.0	13.0	12.5	14.2	14.7	15.2	15.7	15.7	15.0
Unemployment Rate (%)	4.8	5.1	5.2	5.4	5.5	6.5	6.3	7.1	7.3	7.5	7.7	7.8	7.4
Vineland-Millville-Bridgeton Labor Area (Cumberland County)													
Labor Force	69.1	69.3	70.0	70.2	70.1	70.3	69.7	70.1	70.3	71.2	71.3	71.0	70.5
Employment	63.7	63.4	63.9	63.5	63.3	63.1	62.8	62.4	62.5	62.8	62.5	61.8	61.8
Unemployment Volume	5.4	5.9	6.1	6.7	6.8	7.2	6.9	7.74	7.8	8.4	8.8	9.2	8.7
Unemployment Rate (%)	7.8	8.5	8.7	9.5	9.7	10.2	9.9	11.0	11.1	11.8	12.3	13.0	12.3

NEW JERSEY
ECONOMIC INDICATORS

NEW JERSEY
ECONOMIC INDICATORS

NEW
ECO

**Statistical Section
and
Notes**

INDICATORS

INDICATORS

NEW JERSEY
ECONOMIC INDICATORS

NEW JERSEY
ECONOMIC INDICATORS

NEW JERSEY
ECONOMIC INDICATORS

NEW JERSEY
ECONOMIC INDICATORS

NEW JERSEY
ECONOMIC INDICATORS

1. Civilian Labor Force (000)

Date	2006		2007		2008		2009	
	Unadj.	Adj.	Unadj.	Adj.	Unadj.	Adj.	Unadj.	Adj.
Jan	4,430.6	4,465.6	4,444.3	4,464.4	4,466.3	4,478.7	4,476.1	4,503.0
Feb	4,453.5	4,469.0	4,445.0	4,462.6	4,467.1	4,483.9	4,494.3	4,514.6
Mar	4,459.3	4,476.4	4,449.8	4,458.7	4,479.7	4,485.5	4,528.0	4,540.6
Apr	4,455.4	4,479.3	4,430.2	4,459.6	4,470.3	4,487.7	4,545.5	4,572.4
May	4,463.0	4,477.2	4,436.2	4,457.6	4,481.9	4,491.3	4,547.3	4,560.4
Jun	4,520.9	4,480.5	4,498.0	4,460.6	4,536.8	4,492.6	4,598.1R	4,550.5R
Jul	4,547.7	4,485.9	4,524.0	4,459.4	4,562.9	4,497.8	4,640.1	4,563.1
Aug	4,516.3	4,489.1	4,475.5	4,460.3	4,527.7	4,502.1		
Sep	4,451.3	4,483.6	4,441.4	4,461.2	4,473.5	4,502.5		
Oct	4,470.3	4,476.0	4,450.1	4,463.1	4,495.1	4,507.4		
Nov	4,479.8	4,475.3	4,476.5	4,467.9	4,493.9	4,510.4		
Dec	4,481.8	4,472.1	4,476.0	4,471.5	4,505.6	4,520.8		

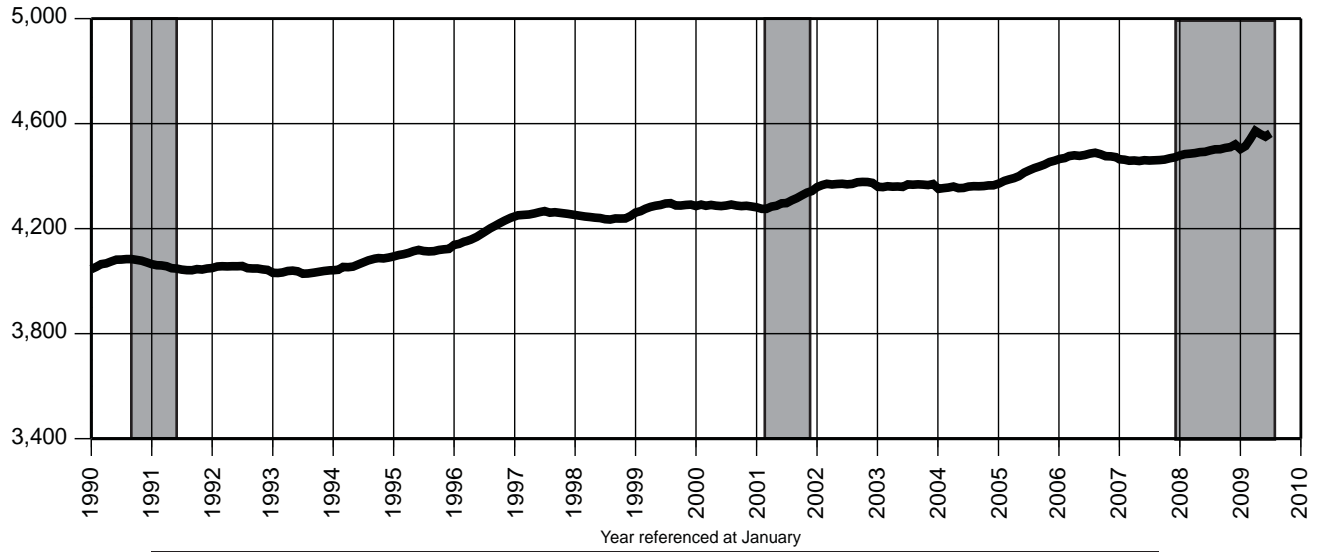
2. Resident Employment (000)

Date	2006		2007		2008		2009	
	Unadj.	Adj.	Unadj.	Adj.	Unadj.	Adj.	Unadj.	Adj.
Jan	4,205.4	4,252.3	4,231.9	4,277.0	4,234.9	4,272.3	4,121.1	4,172.5
Feb	4,219.3	4,257.5	4,238.9	4,274.1	4,238.7	4,272.1	4,100.7	4,144.6
Mar	4,238.2	4,265.9	4,255.7	4,269.4	4,253.2	4,268.9	4,137.2	4,163.8
Apr	4,244.5	4,265.0	4,251.4	4,269.6	4,268.4	4,265.5	4,170.6	4,188.0
May	4,254.6	4,265.5	4,258.5	4,271.4	4,258.9	4,261.2	4,154.1	4,160.3
Jun	4,305.6	4,269.1	4,308.2	4,274.2	4,302.0	4,256.9	4,174.9R	4,130.9R
Jul	4,306.6	4,273.6	4,307.6	4,270.1	4,296.2	4,252.6	4,195.3	4,140.9
Aug	4,306.9	4,276.2	4,292.4	4,270.8	4,275.0	4,247.3		
Sep	4,254.5	4,274.6	4,258.8	4,269.7	4,224.1	4,241.9		
Oct	4,294.7	4,276.5	4,276.0	4,270.8	4,240.5	4,235.6		
Nov	4,297.8	4,278.4	4,296.5	4,270.9	4,223.4	4,224.9		
Dec	4,307.6	4,281.1	4,283.7	4,271.7	4,199.0	4,215.1		

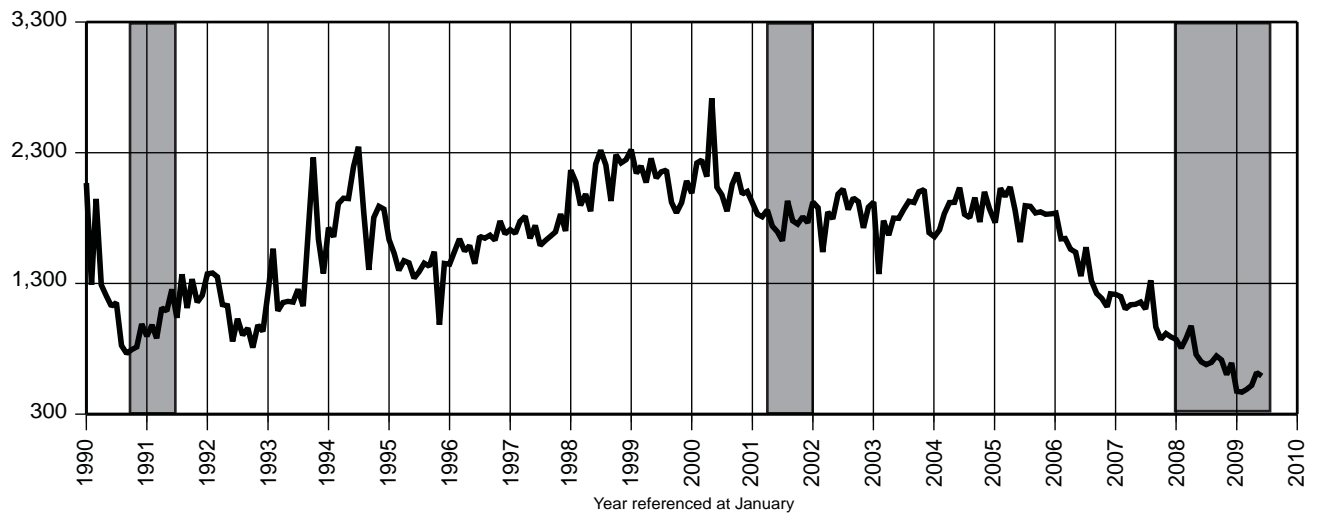
3. Unemployment (000)

Date	2006		2007		2008		2009	
	Unadj.	Adj.	Unadj.	Adj.	Unadj.	Adj.	Unadj.	Adj.
Jan	225.2	213.3	212.4	187.4	231.4	206.4	355.0	330.5
Feb	234.2	211.5	206.0	188.5	228.4	211.8	393.6	370.0
Mar	221.1	210.4	194.1	189.3	226.5	216.6	390.8	376.8
Apr	210.9	214.3	178.8	189.9	201.9	222.2	374.9	383.6
May	208.4	211.6	177.8	186.2	223.0	230.1	393.2	400.0
Jun	215.3	211.4	189.7	186.5	234.8	235.7	423.2R	419.6R
Jul	241.1	212.3	216.4	189.3	266.7	245.2	444.8	422.2
Aug	209.4	212.8	183.1	189.5	252.6	254.8		
Sep	196.8	209.0	182.6	191.5	249.4	260.6		
Oct	175.6	199.5	174.1	192.2	254.5	271.8		
Nov	182.0	197.0	180.0	197.0	270.5	285.5		
Dec	174.2	191.0	192.2	199.8	306.6	305.7		

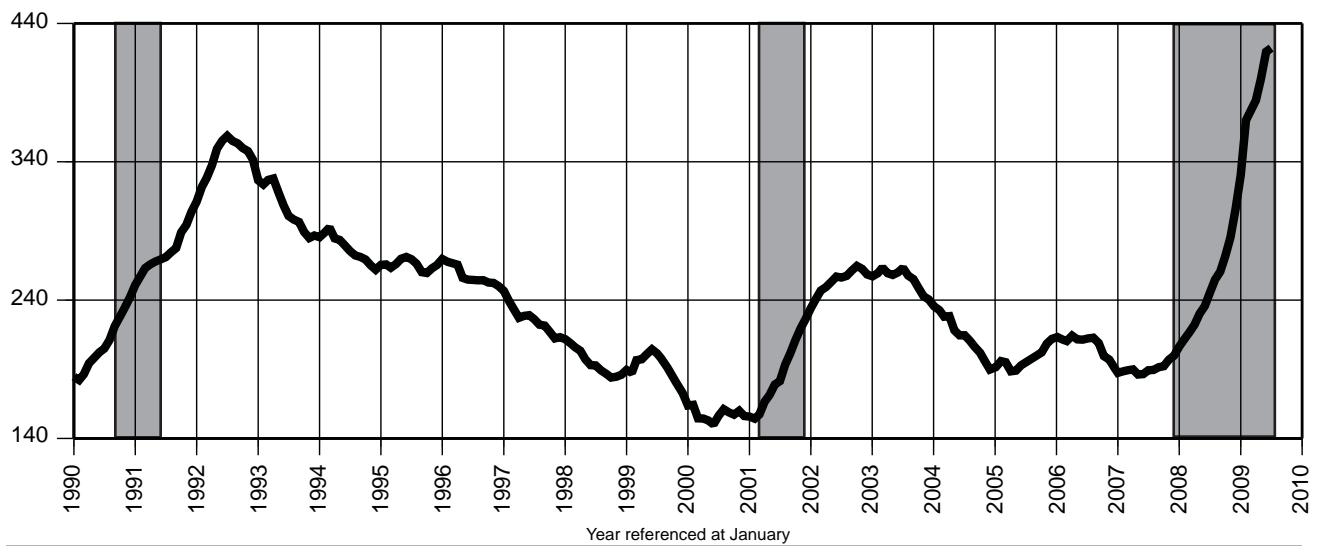
1. Civilian Labor Force (000)



2. Resident Employment (000)



3. Unemployment (000)



4. Labor Force Participation Rate (%)

Date	2006		2007		2008		2009	
	Unadj.	Adj.	Unadj.	Adj.	Unadj.	Adj.	Unadj.	Adj.
Jan	66.3	66.9	66.3	66.6	66.3	66.5	66.0	66.4
Feb	66.7	66.9	66.3	66.5	66.3	66.5	66.2	66.5
Mar	66.7	67.0	66.3	66.5	66.4	66.5	66.7	66.9
Apr	66.7	67.0	66.0	66.4	66.3	66.5	66.9	67.3
May	66.8	67.0	66.1	66.4	66.4	66.6	66.9	67.1
Jun	67.6	67.0	67.0	66.4	67.2	66.5	67.6	66.9
Jul	68.0	67.1	67.3	66.4	67.6	66.6	68.2	67.1
Aug	67.5	67.1	66.6	66.3	67.0	66.6		
Sep	66.5	67.0	66.0	66.3	66.1	66.6		
Oct	66.7	66.8	66.1	66.3	66.4	66.6		
Nov	66.9	66.8	66.5	66.4	66.3	66.6		
Dec	66.9	66.7	66.4	66.4	66.5	66.7		

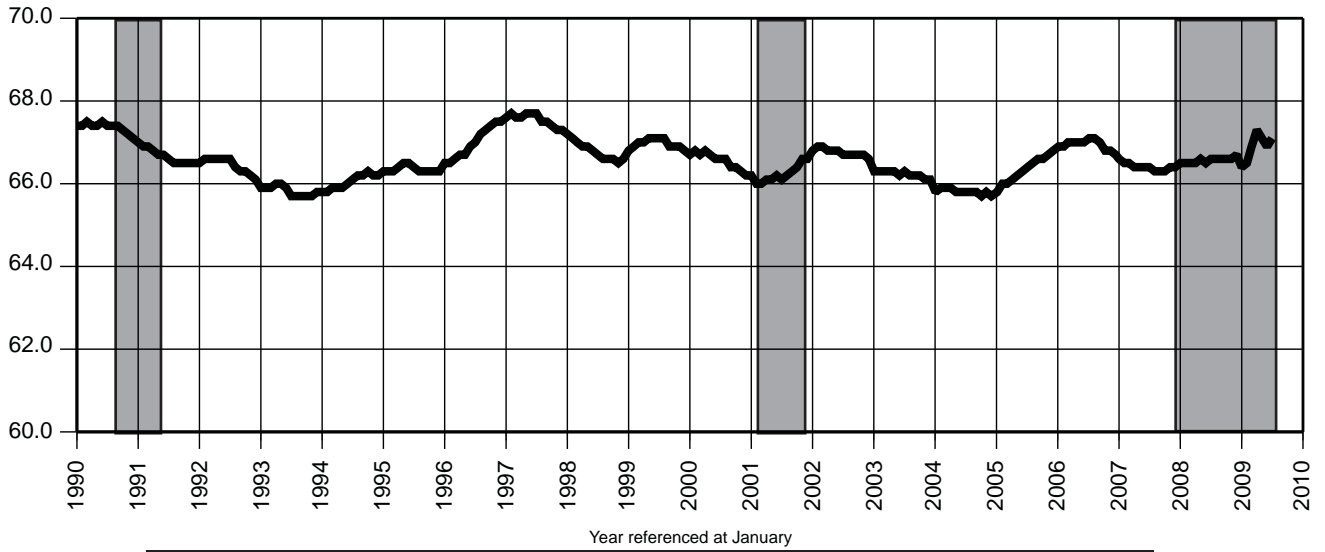
5. Employment / Population Ratio (%)

Date	2006		2007		2008		2009	
	Unadj.	Adj.	Unadj.	Adj.	Unadj.	Adj.	Unadj.	Adj.
Jan	63.0	63.7	63.1	63.8	62.8	63.4	60.8	61.5
Feb	63.2	63.7	63.2	63.7	62.9	63.4	60.4	61.1
Mar	63.4	63.8	63.4	63.6	63.1	63.3	60.9	61.3
Apr	63.5	63.8	63.3	63.6	63.3	63.2	61.4	61.7
May	63.7	63.8	63.4	63.6	63.1	63.1	61.1	61.2
Jun	64.4	63.9	64.1	63.6	63.7	63.1	61.4	60.8
Jul	64.4	63.9	64.1	63.6	63.6	63.0	61.7	60.9
Aug	64.4	63.9	63.9	63.5	63.2	62.8		
Sep	63.5	63.8	63.3	63.5	62.4	62.7		
Oct	64.1	63.8	63.5	63.5	62.6	62.6		
Nov	64.1	63.8	63.8	63.4	62.3	62.4		
Dec	64.3	63.9	63.6	63.4	61.9	62.2		

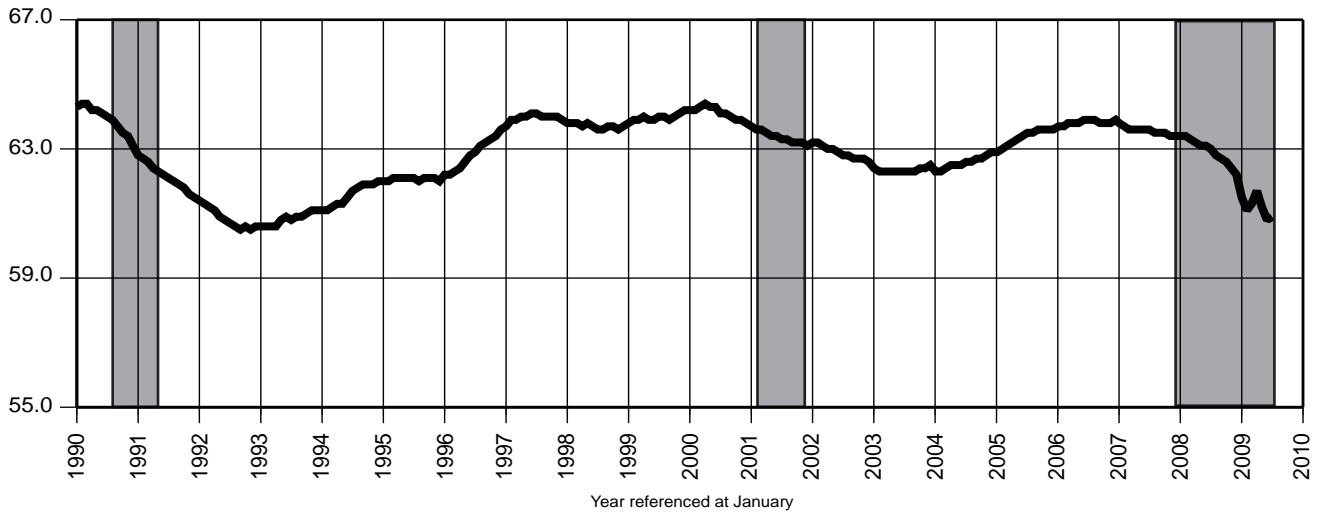
6. Unemployment Rate (%)

Date	2006		2007		2008		2009	
	Unadj.	Adj.	Unadj.	Adj.	Unadj.	Adj.	Unadj.	Adj.
Jan	5.1	4.8	4.8	4.2	5.2	4.6	7.9	7.3
Feb	5.3	4.7	4.6	4.2	5.1	4.7	8.8	8.2
Mar	5.0	4.7	4.4	4.2	5.1	4.8	8.6	8.3
Apr	4.7	4.8	4.0	4.3	4.5	5.0	8.2	8.4
May	4.7	4.7	4.0	4.2	5.0	5.1	8.6	8.8
Jun	4.8	4.7	4.2	4.2	5.2	5.2	9.2	9.2
Jul	5.3	4.7	4.8	4.2	5.8	5.5	9.6	9.3
Aug	4.6	4.7	4.1	4.2	5.6	5.7		
Sep	4.4	4.7	4.1	4.3	5.6	5.8		
Oct	3.9	4.5	3.9	4.3	5.7	6.0		
Nov	4.1	4.4	4.0	4.4	6.0	6.3		
Dec	3.9	4.3	4.3	4.5	6.8	6.8		

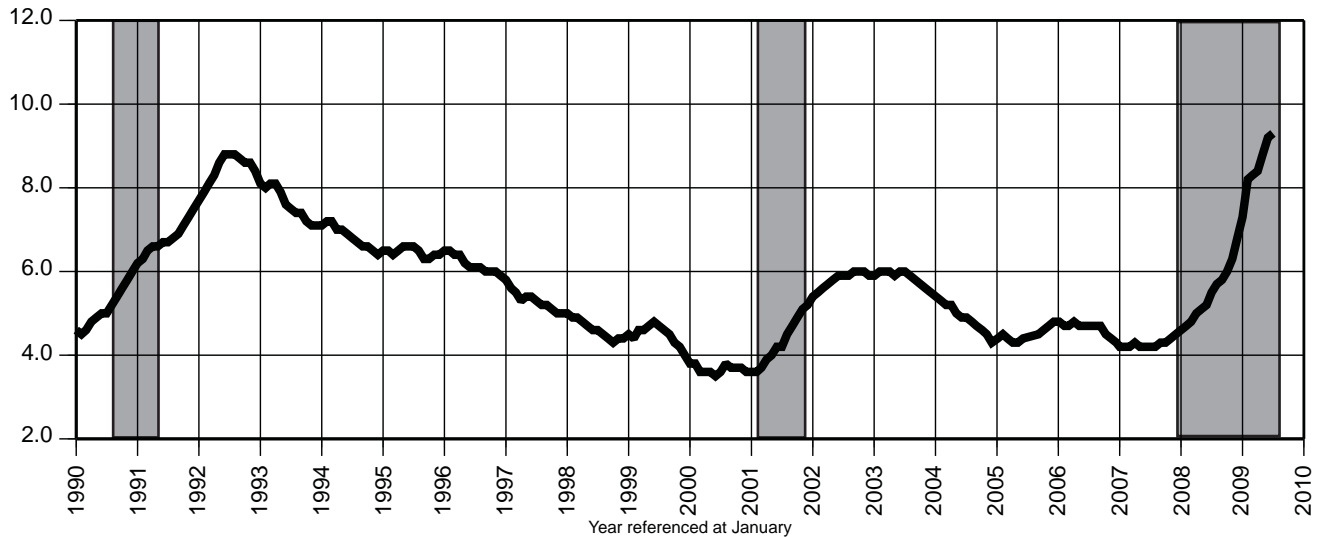
4. Labor Force Participation Rate (%)



5. Employment / Population Ratio (%)



6. Unemployment Rate (%)



7. Nonfarm Payroll Employment (000)

Date	2006		2007		2008		2009	
	Unadj.	Adj.	Unadj.	Adj.	Unadj.	Adj.	Unadj.	Adj.
Jan	3,984.6	4,059.9	3,997.0	4,071.6	4,016.3	4,091.0	3,916.5	3,987.8
Feb	3,992.5	4,065.8	3,993.2	4,065.7	4,017.0	4,089.8	3,899.0	3,973.3
Mar	4,028.4	4,072.5	4,024.6	4,068.2	4,042.7	4,086.4	3,913.1	3,960.0
Apr	4,050.8	4,065.6	4,053.9	4,068.6	4,064.9	4,080.1	3,925.6	3,941.3
May	4,090.9	4,068.7	4,103.9	4,081.0	4,093.8	4,070.2	3,952.0	3,933.3
Jun	4,143.4	4,072.5	4,159.6	4,086.5	4,140.3	4,066.2	3,992.9R	3,930.2R
Jul	4,091.5	4,069.2	4,101.8	4,078.8	4,081.3	4,058.3	3,961.0	3,936.1
Aug	4,076.5	4,074.8	4,086.0	4,084.5	4,052.3	4,051.1		
Sep	4,075.3	4,075.1	4,076.5	4,078.9	4,042.9	4,046.6		
Oct	4,088.1	4,074.2	4,103.4	4,090.5	4,059.4	4,037.4		
Nov	4,107.4	4,075.3	4,118.8	4,087.4	4,052.3	4,014.6		
Dec	4,122.3	4,079.6	4,128.4	4,086.2	4,036.2	4,000.5		

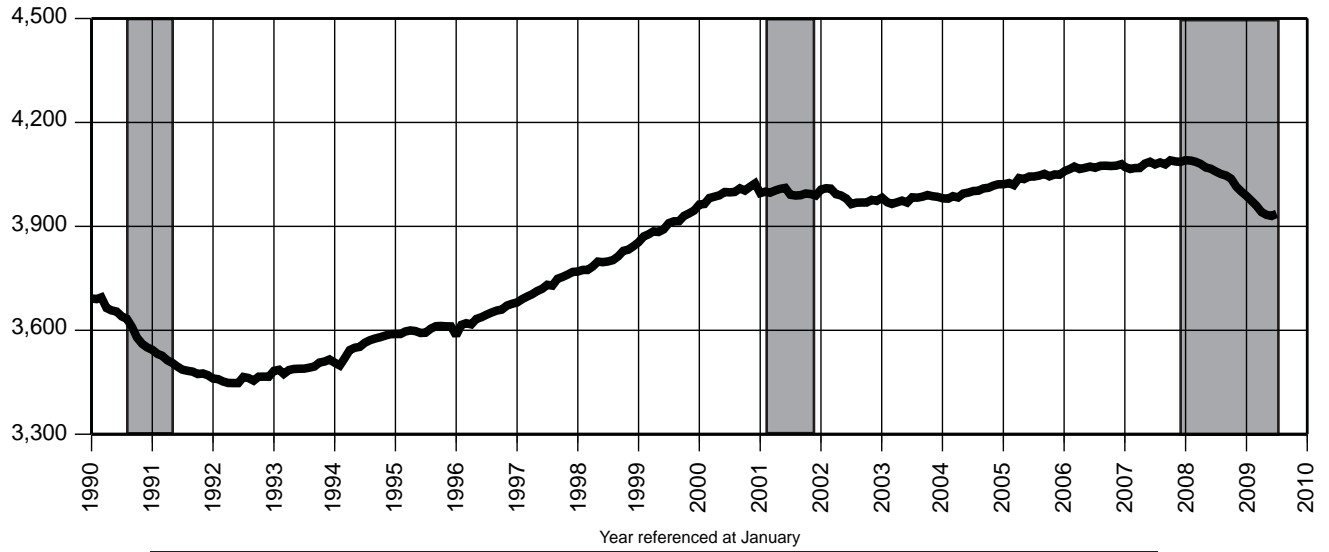
8. Private Sector Payroll Employment (000)

Date	2006		2007		2008		2009	
	Unadj.	Adj.	Unadj.	Adj.	Unadj.	Adj.	Unadj.	Adj.
Jan	3,340.7	3,413.6	3,351.8	3,424.0	3,368.9	3,441.2	3,265.8	3,335.8
Feb	3,336.1	3,418.2	3,336.6	3,418.0	3,358.3	3,440.0	3,239.6	3,322.8
Mar	3,370.0	3,425.4	3,364.8	3,419.7	3,381.6	3,436.7	3,251.4	3,309.1
Apr	3,392.0	3,418.0	3,394.6	3,420.4	3,404.2	3,430.4	3,261.9	3,289.2
May	3,435.5	3,421.5	3,446.0	3,431.5	3,434.8	3,419.8	3,291.5	3,282.0
Jun	3,486.1	3,425.3	3,499.1	3,436.7	3,478.1	3,414.9	3,332.5R	3,279.8R
Jul	3,469.4	3,422.3	3,485.3	3,437.7	3,453.8	3,406.5	3,342.5	3,292.8
Aug	3,465.5	3,426.7	3,476.3	3,437.5	3,440.1	3,401.4		
Sep	3,445.1	3,429.3	3,446.7	3,432.9	3,409.3	3,396.5		
Oct	3,433.0	3,425.7	3,447.8	3,441.4	3,396.9	3,382.9		
Nov	3,447.6	3,427.4	3,457.9	3,438.4	3,387.2	3,361.5		
Dec	3,462.8	3,431.5	3,467.6	3,436.8	3,372.3	3,348.1		

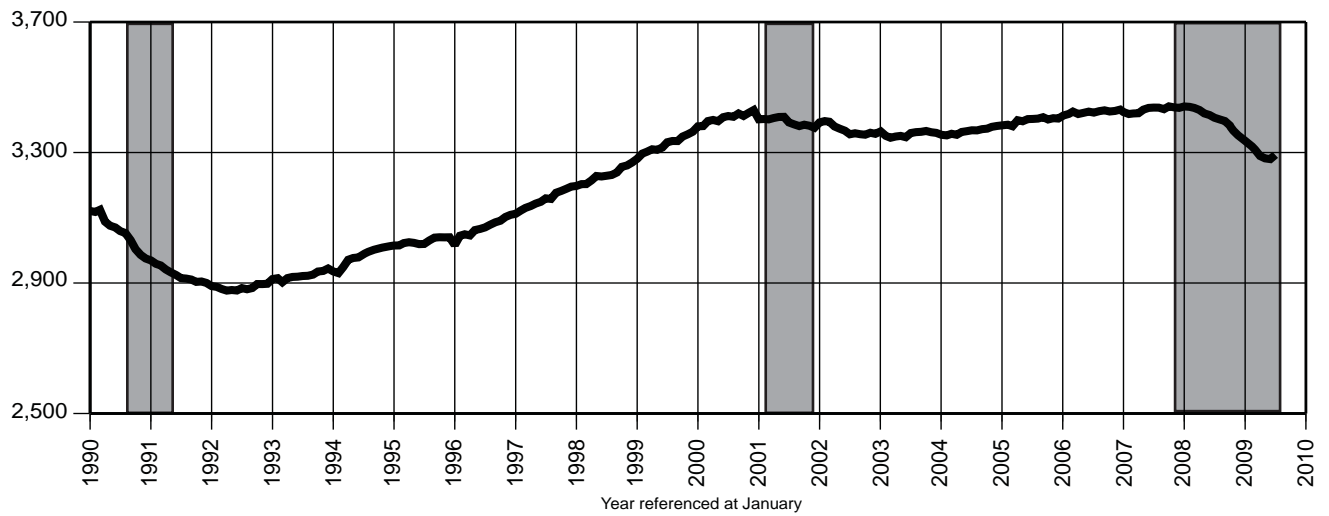
9. Construction Payroll Employment (000)

Date	2006		2007		2008		2009	
	Unadj.	Adj.	Unadj.	Adj.	Unadj.	Adj.	Unadj.	Adj.
Jan	161.5	173.6	161.2	173.1	158.7	170.5	143.5	153.8
Feb	161.2	176.0	155.4	169.9	156.7	170.9	136.9	151.2
Mar	166.5	176.3	160.7	170.6	160.1	169.8	141.2	151.9
Apr	175.4	177.1	169.9	171.6	165.3	167.2	144.0	146.8
May	178.8	175.9	175.7	172.8	168.6	165.8	143.3	141.3
Jun	180.9	175.0	179.5	173.5	170.7	164.8	146.1R	140.9R
Jul	181.0	174.4	179.6	173.1	171.0	164.4	150.9	144.3
Aug	182.2	174.5	181.0	173.4	170.6	163.1		
Sep	181.1	174.7	179.1	173.0	168.3	162.3		
Oct	178.3	173.5	178.1	173.3	167.1	161.8		
Nov	176.7	173.3	175.5	172.1	162.2	158.7		
Dec	175.2	174.8	171.5	171.2	157.8	156.6		

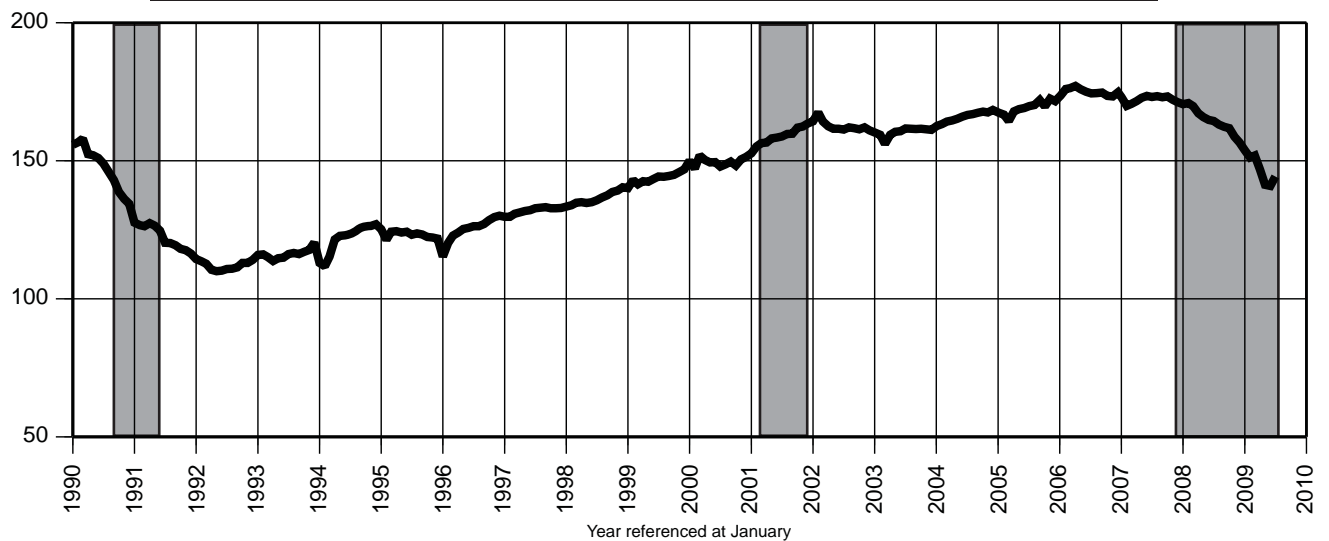
7. Nonfarm Payroll Employment (000)



8. Private Sector Payroll Employment (000)



9. Construction Payroll Employment (000)



You're viewing an archived copy from the New Jersey State Library.
Indicator Series 10-12 Establishment Employment

10. Total Manufacturing Payroll Employment (000)

Date	2006		2007		2008		2009	
	Unadj.	Adj.	Unadj.	Adj.	Unadj.	Adj.	Unadj.	Adj.
Jan	326.4	329.3	314.5	317.0	303.4	305.7	277.6	280.1
Feb	325.9	328.3	313.5	315.8	302.1	304.5	274.7	276.9
Mar	326.6	327.4	313.5	314.4	302.6	303.5	272.3	273.2
Apr	324.7	325.8	312.3	313.3	302.9	303.8	270.7	271.4
May	325.3	325.1	312.2	312.0	302.2	301.9	271.1	271.4
Jun	326.5	324.1	313.5	311.3	303.5	301.3	274.6R	272.8R
Jul	323.7	323.6	312.1	311.8	300.3	300.0	276.0	275.9
Aug	323.1	322.3	310.9	310.1	299.7	298.8		
Sep	322.5	321.4	309.5	308.6	298.5	297.6		
Oct	321.1	320.6	308.6	308.0	293.4	292.5		
Nov	320.3	319.5	308.0	307.2	291.3	290.1		
Dec	319.1	318.1	306.9	306.2	287.2	286.2		

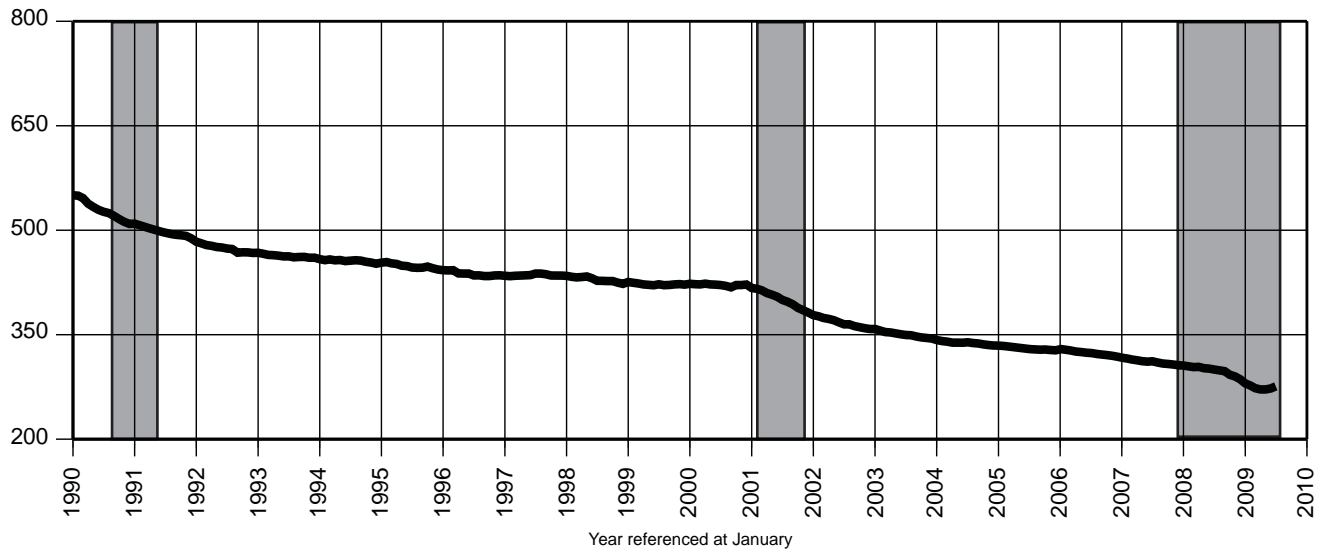
11. Trade, Transportation & Utilities Payroll Employment (000)

Date	2006		2007		2008		2009	
	Unadj.	Adj.	Unadj.	Adj.	Unadj.	Adj.	Unadj.	Adj.
Jan	870.9	875.4	870.2	874.5	870.5	874.5	843.9	851.3
Feb	858.6	874.3	856.7	872.7	856.8	872.8	836.3	853.5
Mar	863.1	875.8	859.5	872.0	859.5	872.1	837.8	851.7
Apr	862.4	874.0	860.2	872.0	857.9	869.8	835.6	847.7
May	871.8	874.1	873.0	875.3	865.6	867.9	840.8	843.9
Jun	880.5	873.5	884.4	877.3	874.0	866.8	849.1R	843.7R
Jul	871.5	873.9	873.8	876.1	863.2	865.4	838.0	839.2
Aug	868.9	874.2	869.8	875.1	859.4	864.7		
Sep	870.8	874.3	870.7	874.7	859.2	863.3		
Oct	877.4	875.6	875.5	874.0	858.4	855.2		
Nov	894.0	876.3	892.4	874.7	870.4	848.6		
Dec	908.8	876.9	907.2	875.0	872.6	844.0		

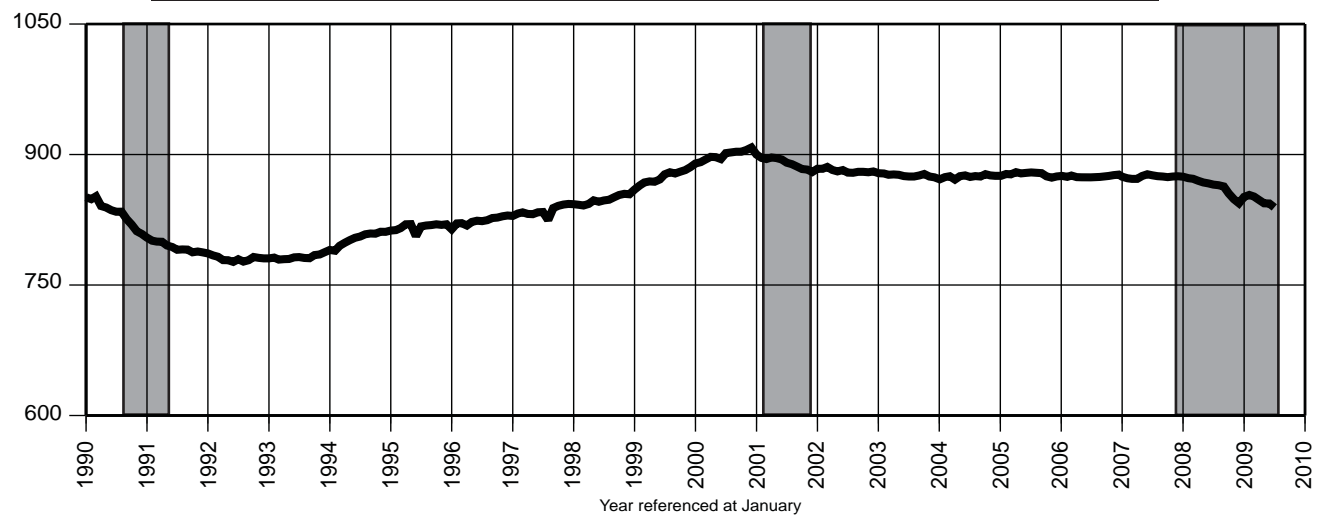
12. Information Payroll Employment (000)

Date	2006		2007		2008		2009	
	Unadj.	Adj.	Unadj.	Adj.	Unadj.	Adj.	Unadj.	Adj.
Jan	97.4	97.9	96.3	96.8	93.7	94.2	90.0	90.4
Feb	98.1	98.2	97.1	97.1	94.2	94.1	89.0	89.8
Mar	98.2	97.8	97.5	97.1	94.2	93.8	88.8	88.9
Apr	97.0	97.5	96.7	97.1	93.1	93.5	89.6	90.1
May	97.4	97.6	96.5	96.7	92.7	92.9	88.6	88.8
Jun	98.3	97.7	96.7	96.0	93.4	92.7	88.1R	87.7R
Jul	97.6	97.4	96.5	96.3	92.1	92.0	88.7	88.6
Aug	98.0	97.7	97.2	96.9	92.1	91.8		
Sep	97.8	98.3	95.4	95.8	91.2	91.5		
Oct	96.3	96.9	94.0	94.6	90.8	90.7		
Nov	96.1	96.0	94.3	94.3	90.7	90.2		
Dec	96.4	95.8	93.9	93.4	90.7	90.1		

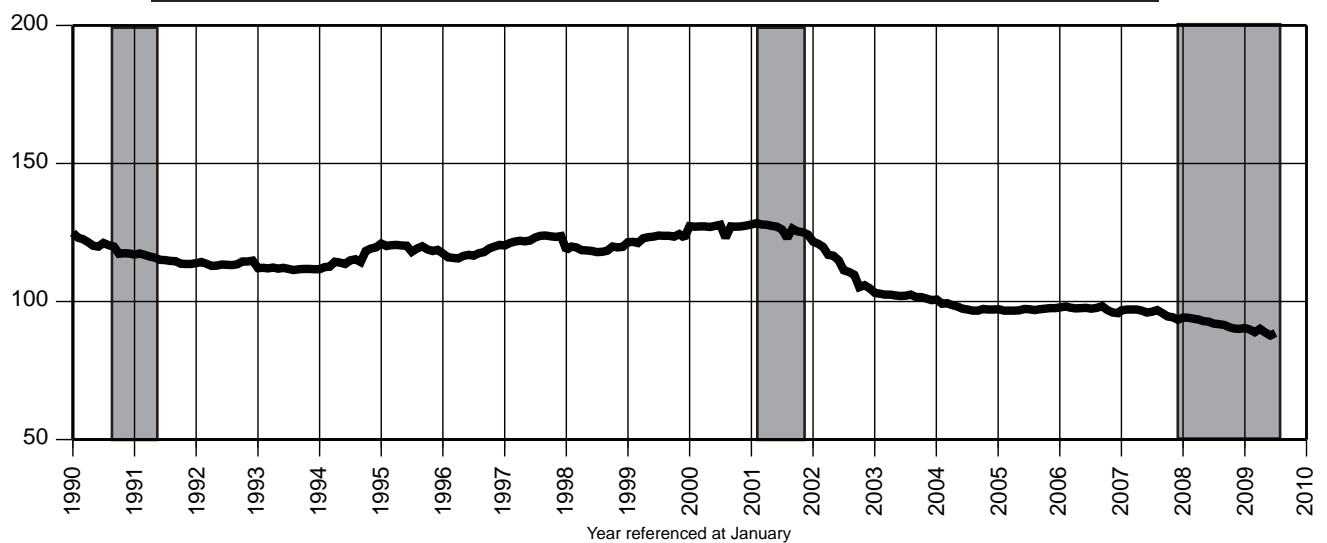
10. Total Manufacturing Payroll Employment (000)



11. Trade, Transportation & Utilities Payroll Employment (000)



12. Information Payroll Employment (000)



You're viewing an archived copy from the New Jersey State Library.
Indicator Series 13-15 Establishment Employment

13. Financial Activities Payroll Employment (000)

Date	2006		2007		2008		2009	
	Unadj.	Adj.	Unadj.	Adj.	Unadj.	Adj.	Unadj.	Adj.
Jan	276.8	279.4	274.9	277.5	272.0	274.5	257.9	259.6
Feb	276.5	279.5	274.3	277.2	271.9	274.6	256.6	258.8
Mar	277.3	279.9	274.3	276.7	272.3	274.6	257.5	259.2
Apr	278.3	279.7	274.8	276.1	271.8	273.1	257.7	259.0
May	279.6	279.7	276.1	276.1	272.5	272.3	258.1	258.2
Jun	281.9	279.3	278.7	276.0	274.2	271.4	259.1R	256.6R
Jul	283.6	279.6	279.9	275.9	272.8	268.8	258.7	256.0
Aug	283.0	279.4	279.0	275.5	272.1	268.7		
Sep	279.1	279.2	274.7	274.9	267.7	268.0		
Oct	278.4	279.0	274.0	274.7	264.0	264.4		
Nov	278.1	278.3	274.0	274.4	259.7	260.1		
Dec	278.3	278.3	273.9	273.9	260.8	260.8		

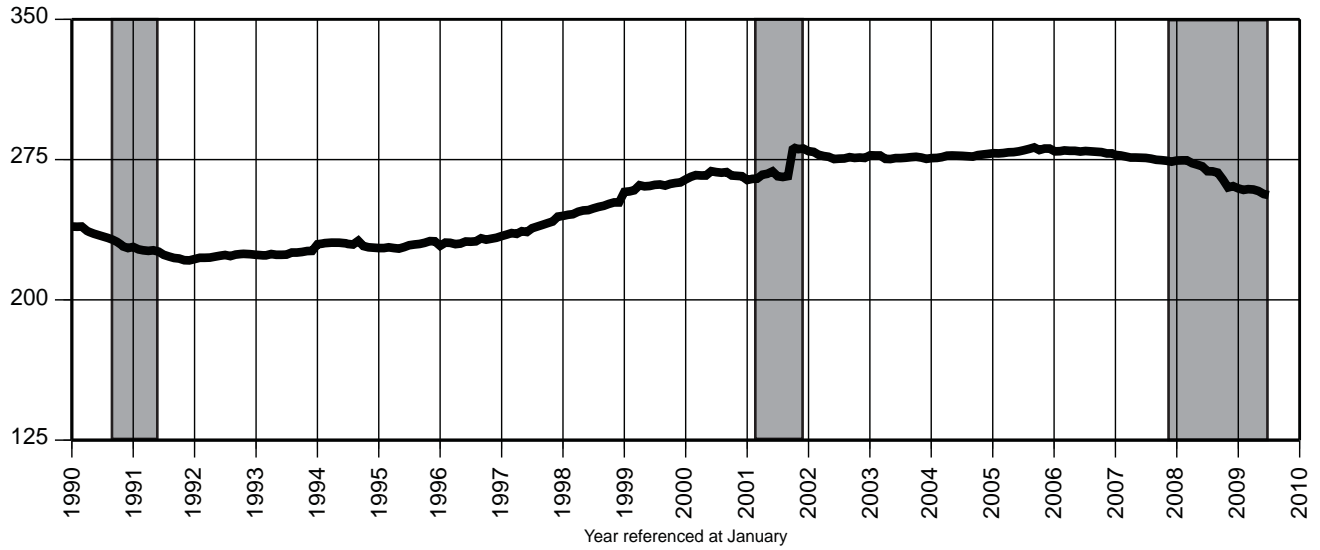
14. Professional & Business Services Payroll Employment (000)

Date	2006		2007		2008		2009	
	Unadj.	Adj.	Unadj.	Adj.	Unadj.	Adj.	Unadj.	Adj.
Jan	577.8	596.7	588.8	607.8	605.5	624.7	574.1	591.5
Feb	583.3	600.9	590.1	607.3	606.8	624.2	566.6	584.4
Mar	592.3	602.5	599.1	609.2	612.7	622.9	570.4	581.1
Apr	598.2	599.8	610.3	612.1	618.7	620.7	575.6	577.8
May	603.9	602.8	616.5	615.5	619.4	618.6	579.3	578.3
Jun	613.7	604.8	626.5	617.3	625.5	616.4	585.1R	578.3R
Jul	611.9	604.2	628.0	620.0	624.7	616.8	590.4	581.5
Aug	616.0	606.8	630.7	621.1	624.9	615.3		
Sep	613.1	607.6	626.3	621.2	618.4	613.7		
Oct	614.2	608.6	627.6	622.2	613.4	606.3		
Nov	615.6	609.6	628.9	622.8	609.2	603.7		
Dec	615.1	610.7	626.9	622.4	599.9	599.3		

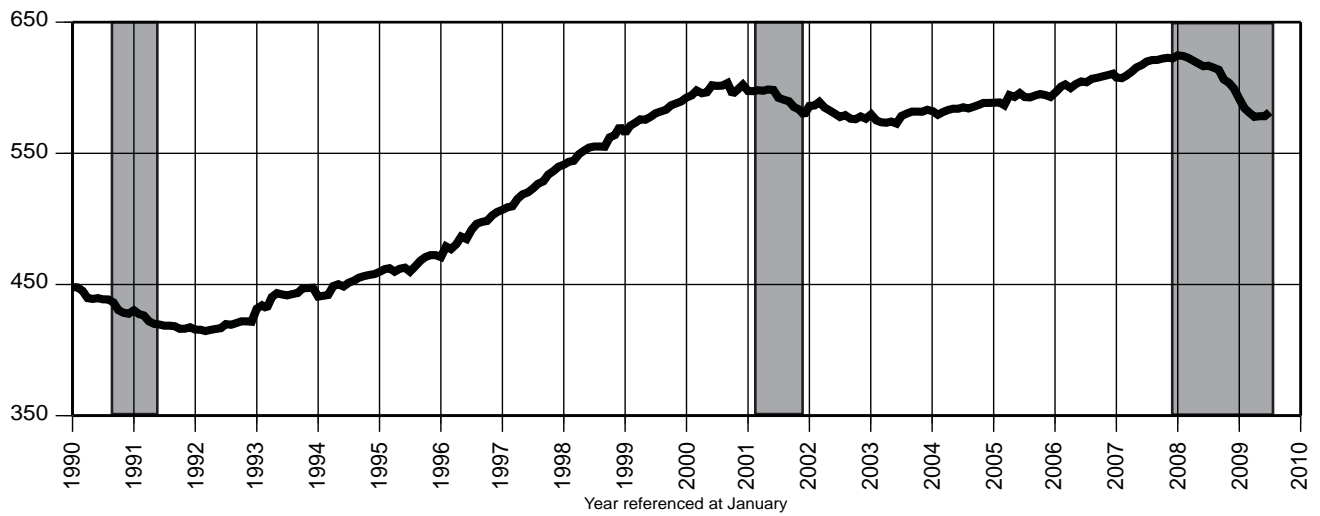
15. Educational & Health Services Payroll Employment (000)

Date	2006		2007		2008		2009	
	Unadj.	Adj.	Unadj.	Adj.	Unadj.	Adj.	Unadj.	Adj.
Jan	560.8	564.4	571.6	575.0	583.7	586.9	595.3	597.9
Feb	563.2	563.9	575.6	576.0	587.7	587.9	598.6	599.1
Mar	567.1	565.2	580.1	577.9	590.5	588.2	600.5	598.3
Apr	566.1	565.2	577.4	576.5	590.9	589.9	601.3	599.2
May	571.1	566.8	583.8	579.5	592.7	588.3	601.7	597.7
Jun	571.3	567.9	582.0	578.5	593.7	590.2	599.4R	596.7R
Jul	563.7	568.1	575.1	579.8	585.2	590.1	591.9	596.2
Aug	562.0	570.5	571.4	580.2	582.1	591.0		
Sep	567.3	571.2	577.2	581.3	587.6	591.8		
Oct	572.7	570.6	586.7	584.7	601.5	599.8		
Nov	575.9	572.5	586.1	582.8	603.6	599.9		
Dec	579.1	574.4	589.6	584.8	604.4	600.3		

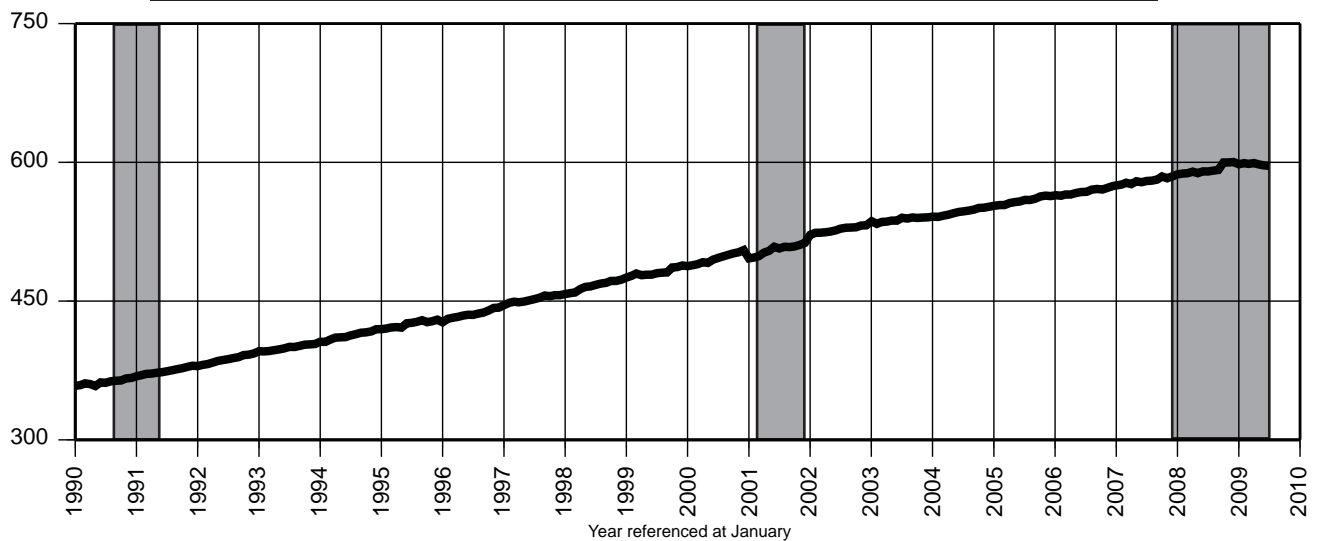
13. Financial Activities Payroll Employment (000)



14. Professional & Business Services Payroll Employment (000)



15. Educational & Health Services Payroll Employment (000)



Indicator Series 16-18 Leisure & Hospitality, CPI and Confidence Index

16. Leisure & Hospitality Payroll Employment (000)

Date	2006		2007		2008		2009	
	Unadj.	Adj.	Unadj.	Adj.	Unadj.	Adj.	Unadj.	Adj.
Jan	310.7	336.3	313.2	338.9	317.3	343.8	321.5	346.0
Feb	310.8	336.4	312.8	338.6	317.9	344.5	318.1	343.4
Mar	319.0	339.0	318.2	338.1	325.0	345.2	320.2	340.1
Apr	327.5	337.0	328.0	337.3	336.5	345.8	323.2	332.8
May	343.7	337.3	345.6	338.8	352.4	345.2	341.6	336.6
Jun	366.5	340.0	367.9	340.7	371.8	343.9	358.0R	333.6R
Jul	371.5	339.2	371.9	339.3	374.1	341.6	372.5	339.8
Aug	368.7	339.4	369.2	339.7	369.8	340.2		
Sep	352.7	340.4	349.7	337.7	352.3	340.5		
Oct	333.2	338.6	337.9	343.6	340.9	344.3		
Nov	329.2	339.0	333.4	343.7	337.0	346.0		
Dec	328.1	339.1	332.1	343.6	335.1	345.7		

17. Consumer Price Index - (CPI-U) (1982-84 = 100)

Date	2007			2008			2009		
	US	NY	PA	US	NY	PA	US	NY	PA
Jan	202.416	221.767	*	211.080	229.869	*	211.143	233.402	*
Feb	203.499	223.066	213.152	211.693	231.020	220.935	212.193	234.663	220.262
Mar	205.352	224.551	*	213.528	233.122	*	212.709	235.067	*
Apr	206.686	225.780	215.270	214.823	233.822	223.622	213.240	235.582	221.686
May	207.949	227.146	*	216.632	236.151	*	213.856	235.975	*
Jun	208.352	228.258	217.255	218.815	238.580	228.408	215.693	237.172	223.810
Jul	208.299	228.628	*	219.964	240.273	*	215.351	237.600	*
Aug	207.917	228.326	218.692	219.086	240.550	228.337			
Sep	208.490	228.308	*	218.783	240.089	*			
Oct	208.936	228.552	218.929	216.573	238.403	225.113			
Nov	210.177	229.504	*	212.425	234.498	*			
Dec	210.036	229.395	219.025	210.228	233.012	218.186			

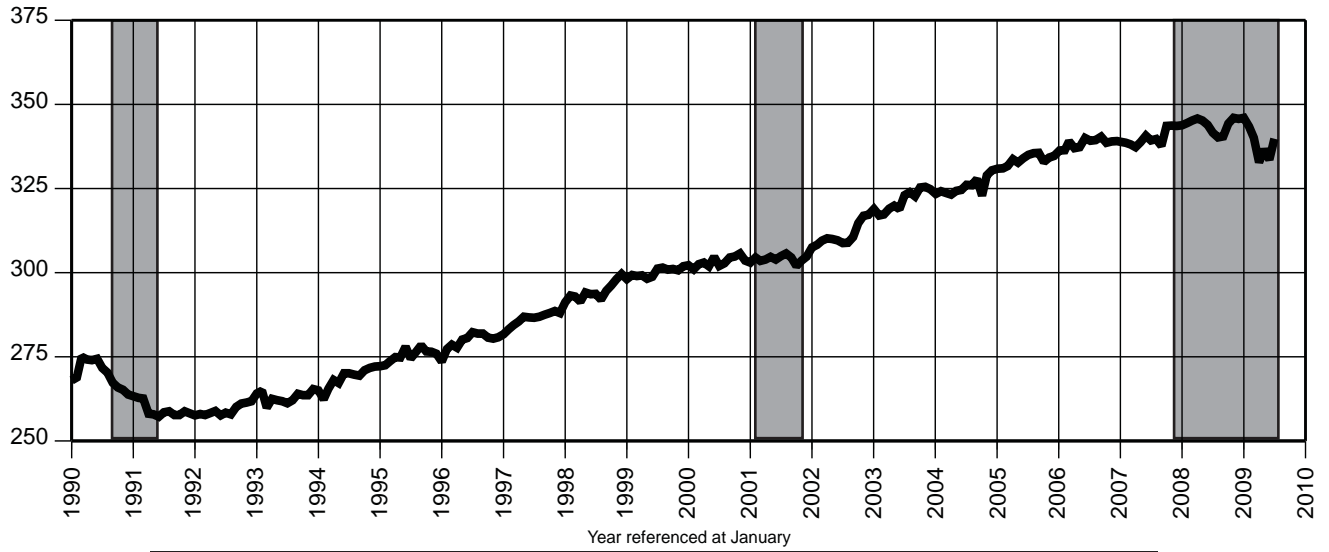
18. Consumer Confidence Index, US

(Seasonally unadjusted)

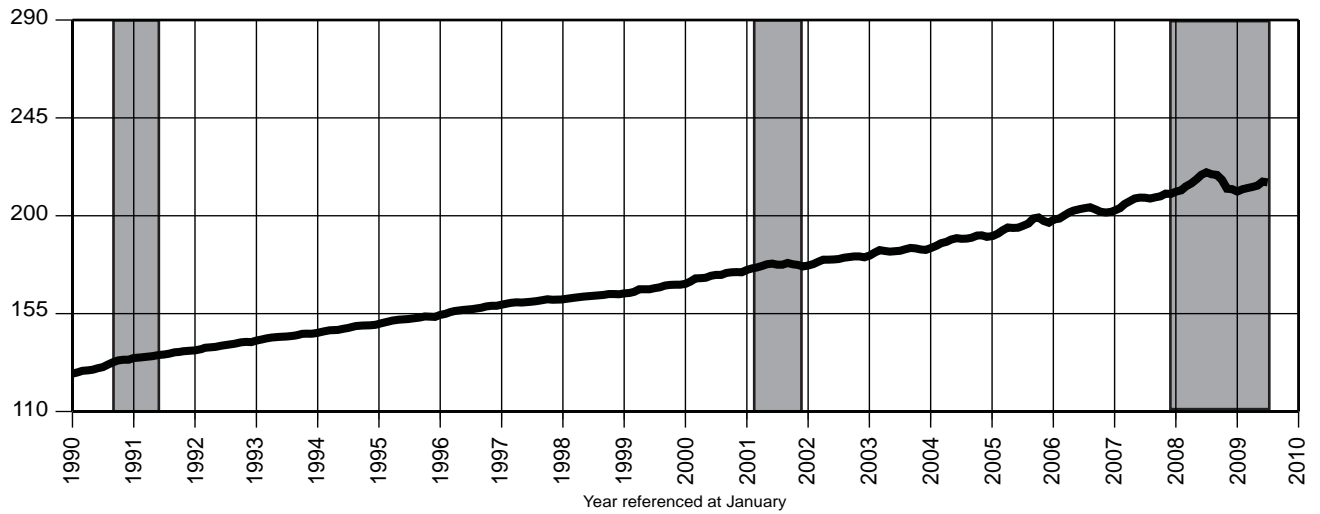
Date	2006	2007	2008	2009
Jan	106.8	110.2	87.3	37.4
Feb	102.7	111.2	76.4	25.3
Mar	107.5	108.2	65.9	26.9
Apr	109.8	106.3	62.8	40.8
May	104.7	108.5	58.1	54.8
Jun	105.4	105.3	51.0	49.3
Jul	107.0	111.9	51.9	46.6
Aug	100.2	105.6	58.5	
Sep	105.9	99.5	61.4	
Oct	105.1	95.2	38.8	
Nov	105.3	87.8	44.7	
Dec	110.0	90.6	38.6	

Indicator Series 16-18 Leisure & Hospitality, CPI and Confidence Index

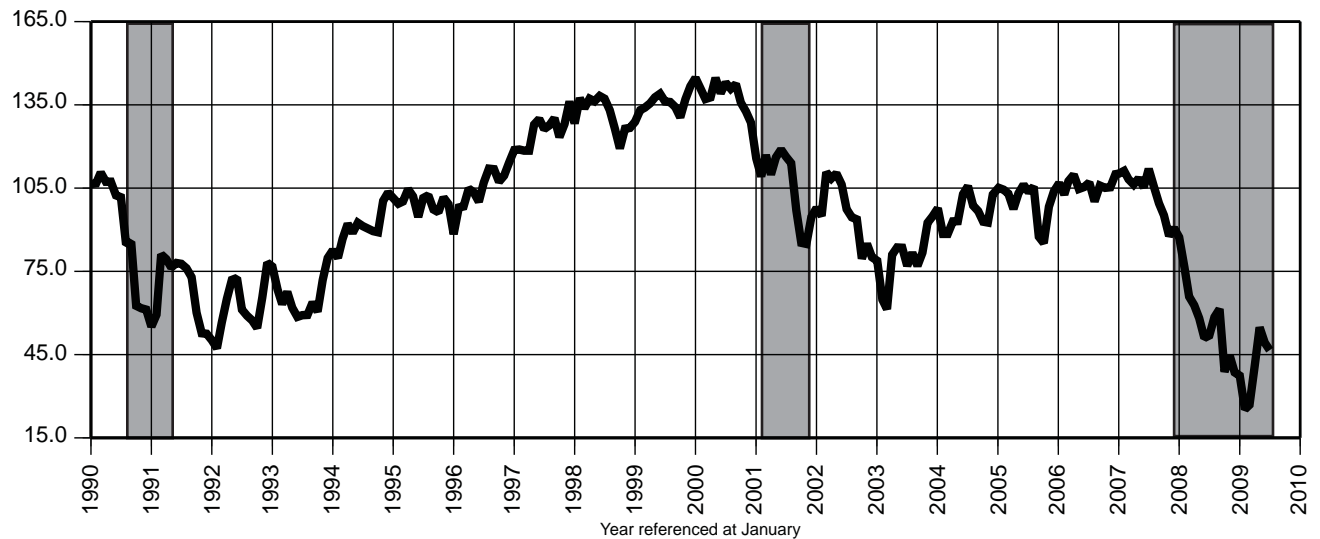
16. Leisure & Hospitality Payroll Employment (000)



17. Consumer Price Index - (CPI-U) (1982-84 = 100)



18. Consumer Confidence Index, US



Indicator Series 19-21 Private Residential Building Permits

19. Total Private Dwelling Units Authorized by Building Permits

Date	2006		2007		2008		2009	
	Unadj.	Adj.	Unadj.	Adj.	Unadj.	Adj.	Unadj.	Adj.
Jan	2,548	3,006	2,077	2,248	1,635	1,812	707	817
Feb	2,502	3,272	1,648	2,184	1,301	1,654	1,256R	1,668R
Mar	2,989	2,946	1,871	1,902	2,074	2,167	1,311R	1,357R
Apr	2,654	2,597	2,100	1,983	2,197	1,907	783R	691R
May	3,044	2,838	1,992	1,928	1,658	1,660	1,033R	1,096R
Jun	3,314	2,635	2,759	2,117	2,385	1,949	900	682
Jul	4,516	4,616	1,905	1,984	1,301	1,272		
Aug	2,675	2,466	3,084	2,919	1,150	1,205		
Sep	2,850	2,762	1,896	1,940	1,386	1,286		
Oct	2,030	1,945	2,283	1,983	1,279	1,161		
Nov	3,196	3,132	2,133	2,145	917	985		
Dec	2,024	2,492	1,652	2,000	1,086	1,135		

20. Private Single-Family Dwelling Units Authorized by Building Permits

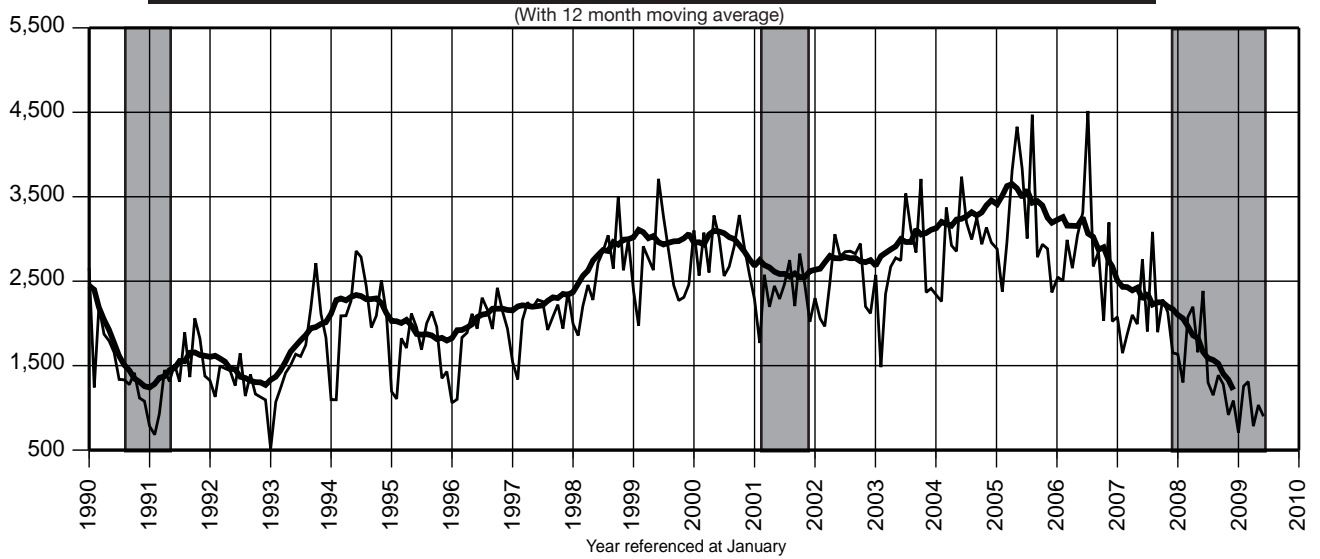
Date	2006		2007		2008		2009	
	Unadj.	Adj.	Unadj.	Adj.	Unadj.	Adj.	Unadj.	Adj.
Jan	1,592	1,839	1,084	1,216	830	872	430	475
Feb	1,301	1,641	953	1,200	668	806	370	468
Mar	1,766	1,644	1,137	1,104	855	878	505R	489R
Apr	1,457	1,562	1,109	1,137	1,057	976	551R	520R
May	1,674	1,539	1,264	1,140	825	756	640R	618R
Jun	1,635	1,356	1,328	1,158	759	700	690	592
Jul	1,626	1,577	1,183	1,104	779	679		
Aug	1,536	1,321	1,552	1,324	741	696		
Sep	1,184	1,223	901	966	729	745		
Oct	1,254	1,185	937	873	800	715		
Nov	1,073	1,121	879	917	502	602		
Dec	1,032	1,221	750	891	630	692		

21. Private Multi-Dwelling Units Authorized by Building Permits

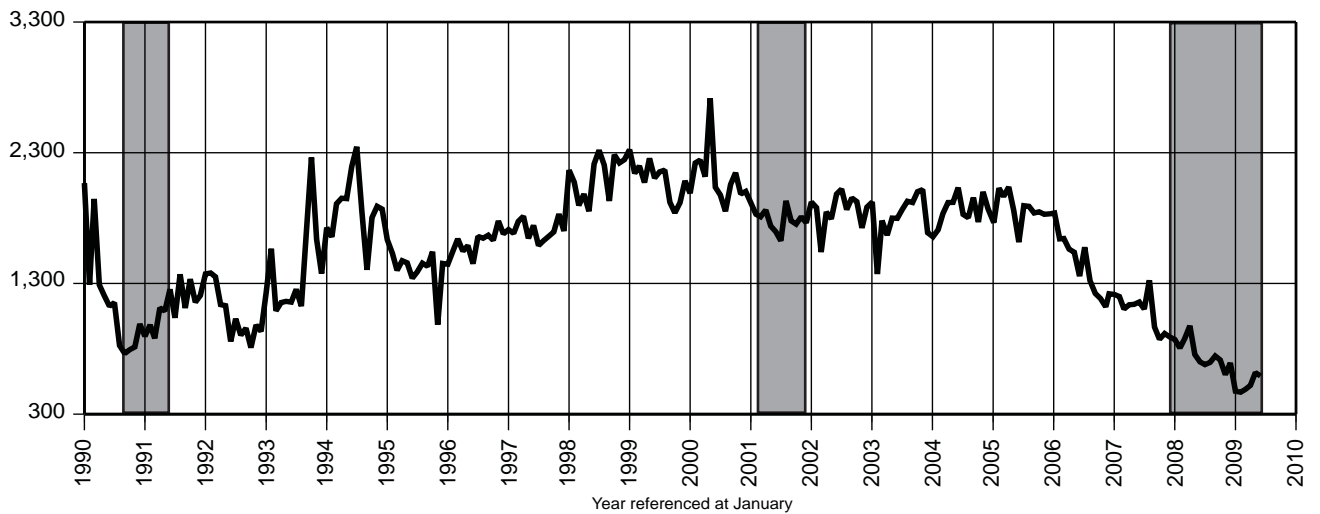
(Seasonality not statistically significant)

Date	2006	2007	2008	2009
	Unadj.	Unadj.	Unadj.	Unadj.
Jan	471	759	730	229
Feb	924	379	531	863R
Mar	694	514	1,124	746
Apr	876	767	987	172
May	950	527	739	341R
Jun	1,195	1,137	1,523	163
Jul	2,250	509	427	
Aug	814	1,184	363	
Sep	1,306	821	589	
Oct	371	1,013	406	
Nov	1,844	1,055	373	
Dec	719	655	327	

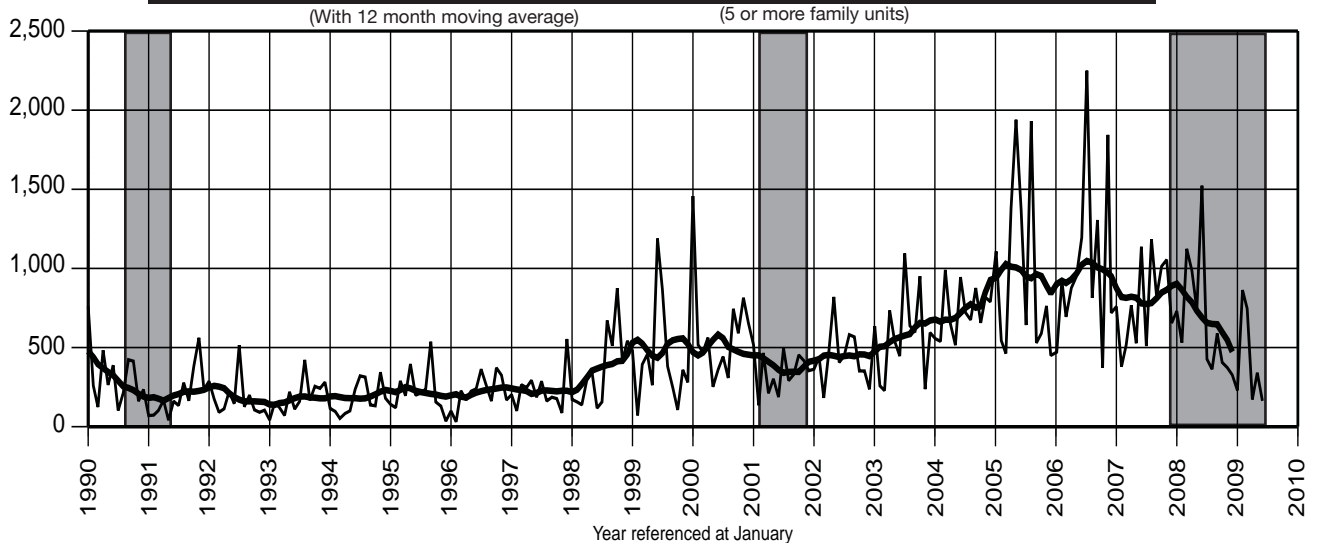
19. Total Private Dwelling Units Authorized by Building Permits



20. Private Single-Family Dwelling Units Authorized by Building Permits



21. Private Multi-Dwelling Units Authorized by Building Permits



22. Total New Vehicle Registrations*

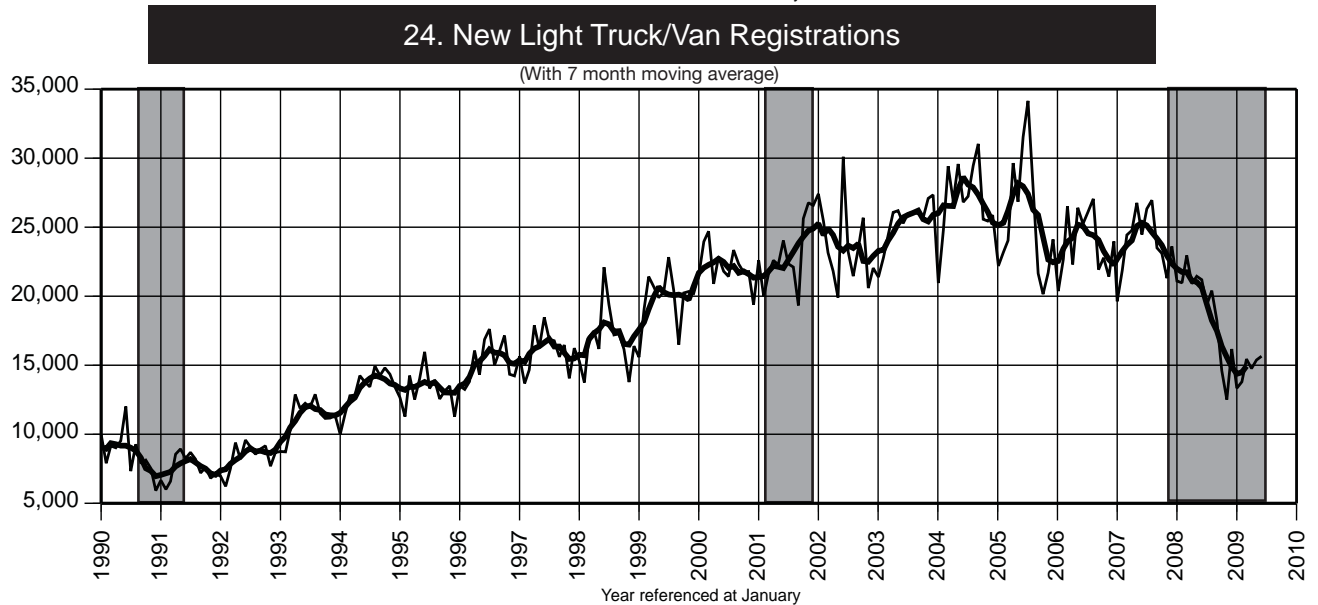
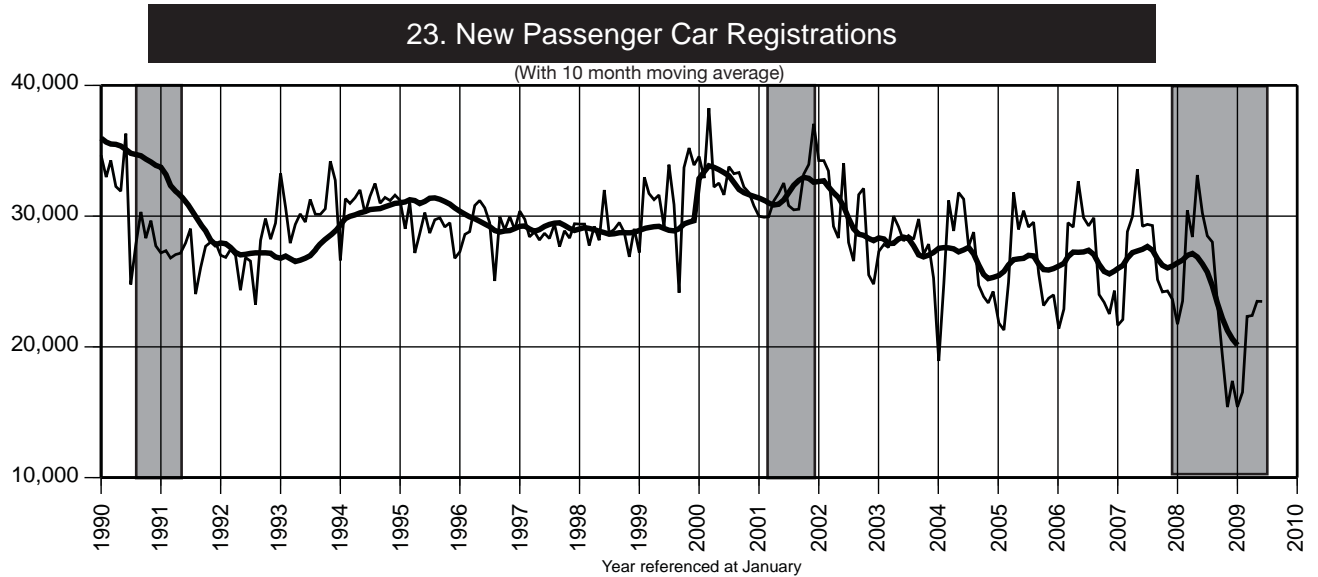
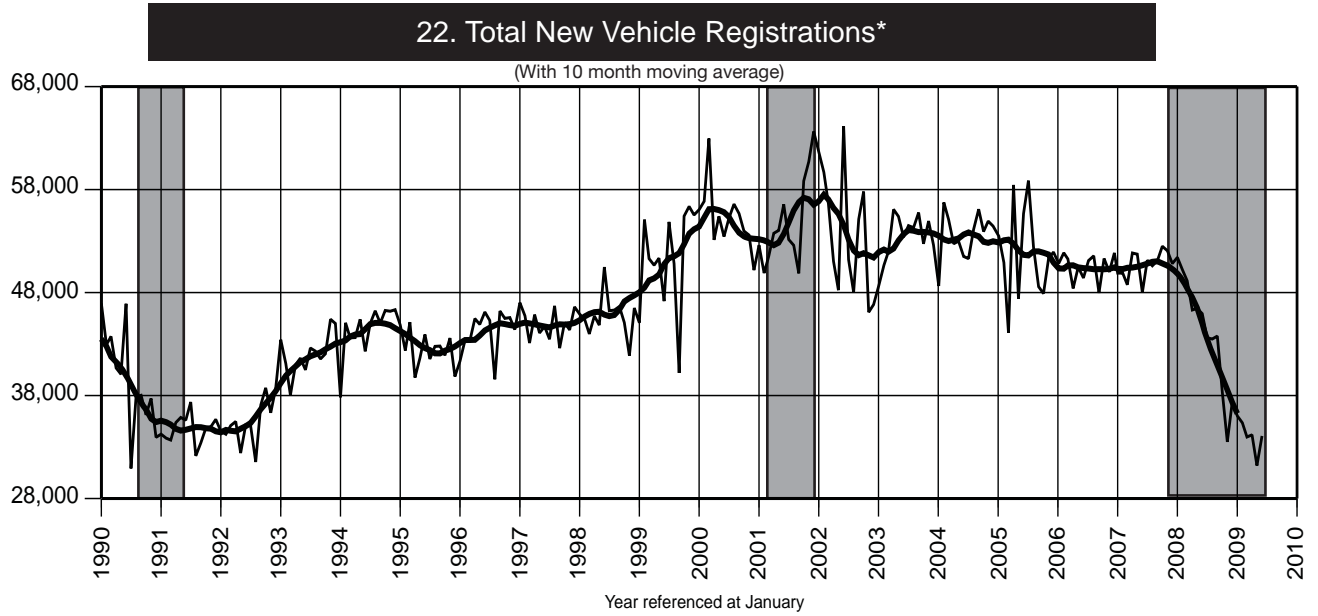
Date	2006		2007		2008		2009	
	Unadj.	Adj.	Unadj.	Adj.	Unadj.	Adj.	Unadj.	Adj.
Jan	41,772	50,824	41,273	49,890	42,834	51,414	28,743	36,026
Feb	45,584	51,857	43,966	49,893	44,478	50,203	30,335R	35,347R
Mar	56,014	51,259	53,249	48,760	53,401	49,138	37,778R	33,977R
Apr	51,459	48,400	54,747	51,838	49,305	46,311	37,159R	34,179R
May	59,073	50,472	60,346	51,725	54,589	46,462	38,863R	31,199R
Jun	55,134	49,423	53,686	48,002	51,425	45,945	39,127	34,074
Jul	55,377	51,101	55,701	51,134	47,829	43,601		
Aug	56,929	51,563	56,233	50,600	48,422	43,490		
Sep	45,923	47,968	48,643	51,104	41,536	43,769		
Oct	46,191	51,306	47,303	52,493	33,948	38,400		
Nov	43,940	50,007	45,582	52,060	27,905	33,500		
Dec	48,275	51,848	47,245	50,815	33,572	37,350		

23. New Passenger Car Registrations

Date	2006		2007		2008		2009	
	Unadj.	Adj.	Unadj.	Adj.	Unadj.	Adj.	Unadj.	Adj.
Jan	21,401	26,499	21,644	26,864	21,735	26,971	15,408	20,661
Feb	22,890	27,010	22,089	26,174	23,505	27,573	16,535R	20,529R
Mar	29,499	26,569	28,814	25,904	30,446	27,578	22,332R	19,445R
Apr	29,158	26,559	29,977	27,404	28,401	25,685	22,397R	19,616R
May	32,664	26,768	33,583	27,476	33,144	26,908	23,488R	17,148R
Jun	29,891	25,923	29,219	25,283	30,234	26,278	23,475	19,493
Jul	29,260	26,741	29,372	26,655	28,493	25,677		
Aug	29,876	27,049	29,281	26,368	28,017	25,150		
Sep	23,999	25,370	25,142	26,636	23,293	24,717		
Oct	23,406	26,614	24,202	27,439	19,335	22,559		
Nov	22,517	26,091	24,277	28,060	15,395	19,326		
Dec	24,301	27,699	23,636	27,150	17,398	21,172		

24. New Light Truck/Van Registrations

Date	2006		2007		2008		2009	
	Unadj.	Adj.	Unadj.	Adj.	Unadj.	Adj.	Unadj.	Adj.
Jan	20,371	24,325	19,629	23,026	21,099	24,442	13,335	15,366
Feb	22,694	24,847	21,877	23,720	20,973	22,631	13,800R	14,818R
Mar	26,515	24,690	24,435	22,857	22,955	21,560	15,446	14,532
Apr	22,301	21,841	24,770	24,434	20,904	20,626	14,762R	14,563R
May	26,409	23,704	26,763	24,249	21,445	19,553	15,375R	14,051R
Jun	25,243	23,500	24,467	22,719	21,191	19,668	15,652	14,581
Jul	26,117	24,361	26,329	24,479	19,336	17,924		
Aug	27,053	24,514	26,952	24,232	20,405	18,341		
Sep	21,924	22,597	23,501	24,469	18,243	19,049		
Oct	22,785	24,692	23,101	25,054	14,613	15,841		
Nov	21,423	23,915	21,305	24,000	12,510	14,174		
Dec	23,974	24,149	23,609	23,664	16,174	16,178		



*Includes only new passenger car and light truck/van registrations

Indicator Series 25-27 Unemployment Insurance Claimants

25. Weeks Claimed & Insured Unemployment Rate

Date	2006		2007		2008		2009	
	WA	IUR	WA	IUR	WA	IUR	WA	IUR
Jan	107.9	2.8	108.5	2.8	114.4	2.9	172.7	4.4
Feb	105.7	2.8	111.1	2.9	114.2	2.9	184.3	4.7
Mar	105.0	2.7	111.6	2.9	117.0	3.0	201.0	5.1
Apr	104.7	2.7	112.5	2.9	119.2	3.1	220.6	5.7
May	105.4	2.7	111.8	2.9	124.0	3.2	230.9	5.9
Jun	105.9	2.8	111.2	2.9	126.4	3.2	225.5	5.8
Jul	111.8	2.9	113.6	2.9	128.5	3.3	206.4	5.3
Aug	110.6	2.9	113.0	2.9	132.1	3.4		
Sep	110.7	2.9	112.8	2.9	141.2	3.6		
Oct	108.9	2.8	112.8	2.9	150.0	3.8		
Nov	109.6	2.8	112.5	2.9	158.9	4.1		
Dec	108.5	2.8	113.0	2.9	165.6	4.2		

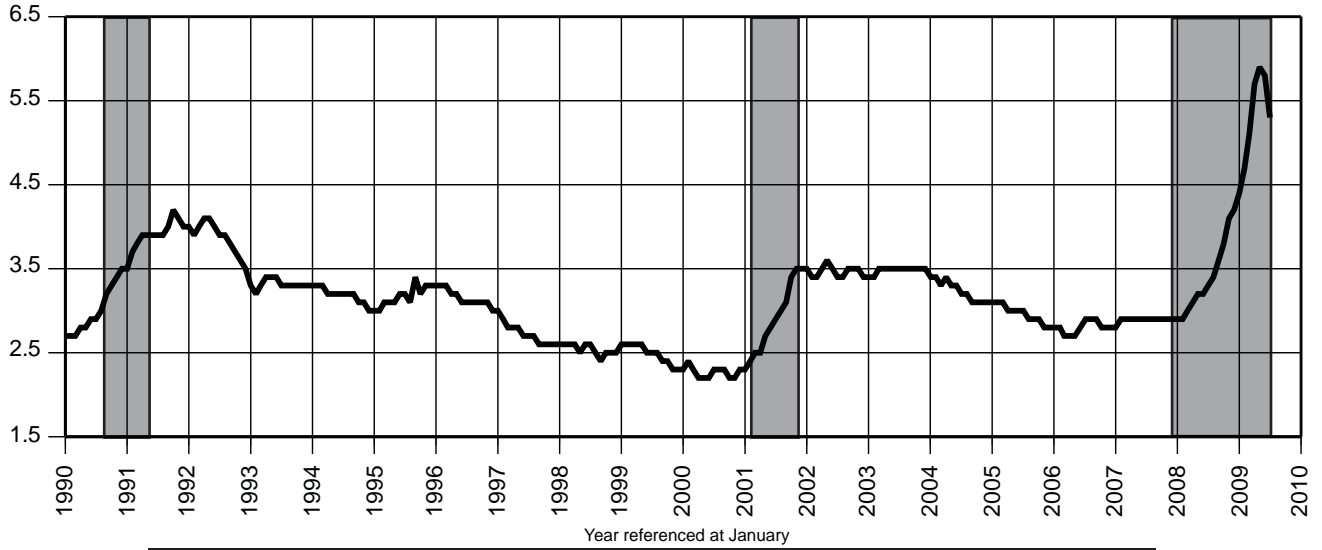
26. Initial Claims-Weekly Average

Date	2006		2007		2008		2009	
	Unadj.	Adj.	Unadj.	Adj.	Unadj.	Adj.	Unadj.	Adj.
Jan	13,034	10,111	13,850	10,859	13,768	10,606	20,137	14,634
Feb	9,451	9,749	10,515	10,923	10,184	10,004	17,193	17,917
Mar	7,927	9,357	8,609	10,073	10,260	12,631	13,895	17,723
Apr	10,564	10,202	11,080	10,822	10,163	10,088	14,848	14,086
May	7,638	10,387	8,087	10,746	8,653	10,793	12,197	15,503
Jun	12,675	10,165	12,320	9,911	13,684	11,511	16,656	14,325
Jul	10,521	10,881	10,299	11,042	10,839	11,331	13,673	13,614
Aug	8,617	10,682	8,600	10,150	9,691	11,507		
Sep	7,736	9,626	8,138	10,428	10,258	13,694		
Oct	8,535	10,348	9,136	11,027	11,748	13,201		
Nov	10,883	10,466	11,304	10,430	16,083	15,264		
Dec	13,813	9,540	14,785	10,609	17,301	12,952		

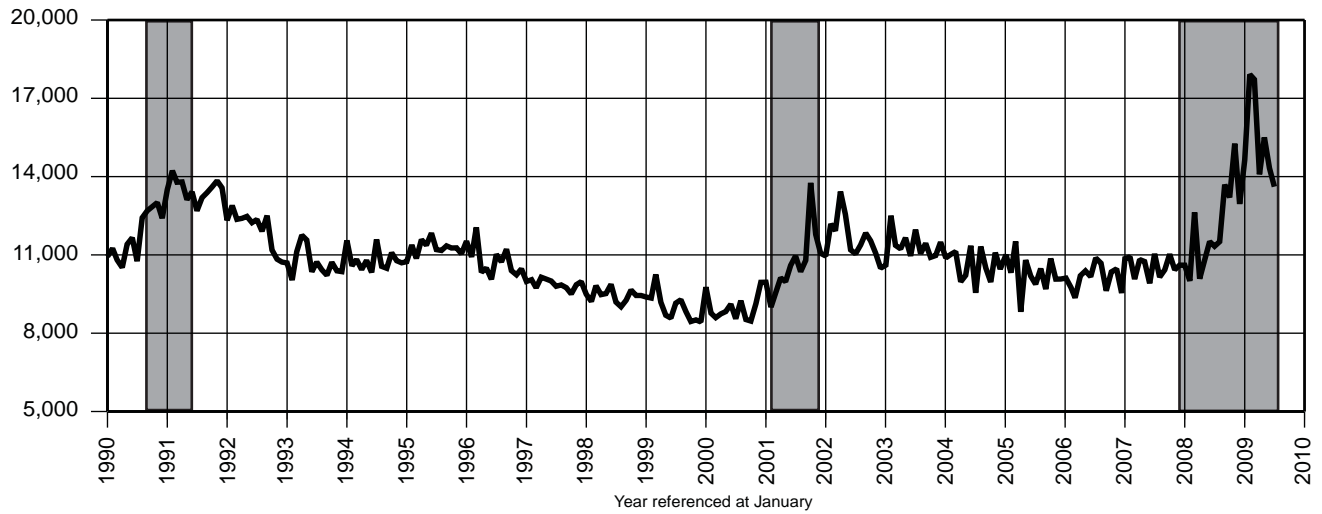
27. Unemployment Insurance Exhaustions

Date	2006	2007	2008	2009
	Unadj.	Unadj.	Unadj.	Unadj.
Jan	13,638	13,845	12,987	16,512
Feb	10,404	10,443	10,694	16,379
Mar	11,647	11,335	13,131	21,982
Apr	11,352	12,919	13,650	21,928
May	12,753	12,807	11,961	23,347
Jun	10,096	10,064	12,531	27,659
Jul	12,361	13,085	14,466	29,284
Aug	10,841	10,486	12,481	
Sep	9,439	10,014	14,953	
Oct	11,752	12,248	13,695	
Nov	9,862	9,909	13,103	
Dec	10,409	11,961	18,460	

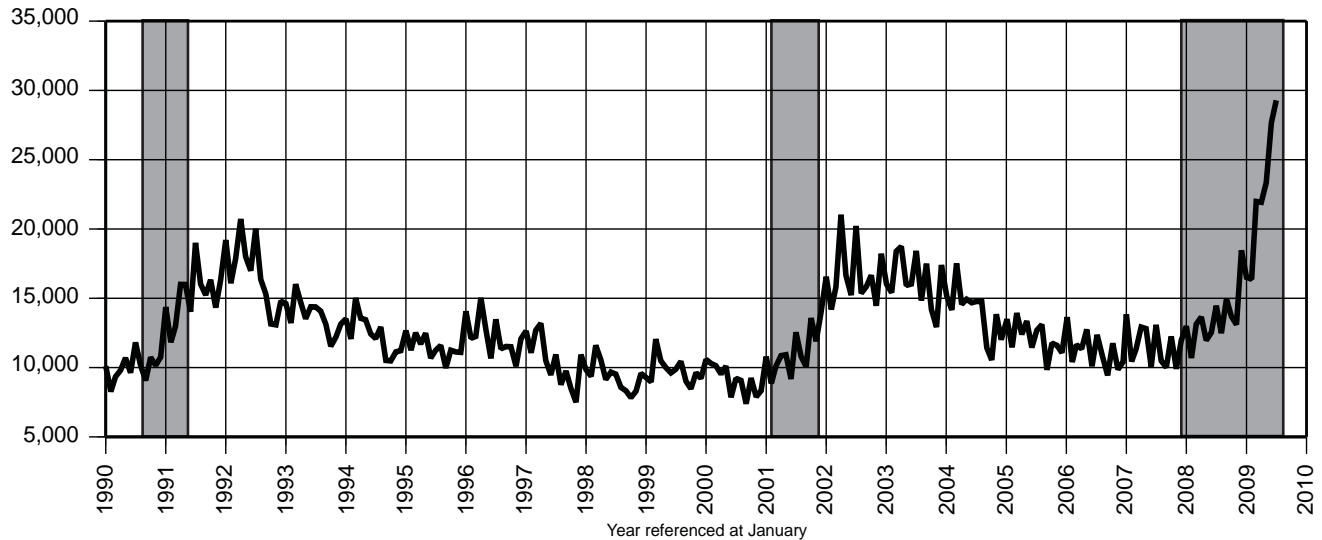
25. Insured Unemployment Rate



26. Initial Claims-Weekly Average



27. Unemployment Insurance Exhaustions



Indicator Series 1 to 27

Annual Averages 1998-2008											
Indicator Series	1998	1999	2000	2001	2002	2003	2004	2005	2006	2007	2008
1 Civilian Labor Force (000)	4,242.4	4,284.6	4,287.8	4,302.3	4,370.8	4,363.9	4,358.9	4,416.1	4,477.5	4,462.3	4,496.7
2 Resident Employment (000)	4,047.1	4,092.7	4,130.3	4,117.5	4,117.3	4,108.4	4,144.2	4,218.5	4,269.6	4,271.7	4,251.2
3 Resident Unemployment (000)	195.3	191.8	157.5	184.8	253.5	255.5	214.7	197.6	207.9	190.6	245.5
4 Labor Force Particip. Rate (%)	66.8	67.0	66.6	66.2	66.7	66.1	65.8	66.3	66.9	66.4	66.2
5 Employment/Pop. Rate (%)	63.7	64.0	64.1	66.3	62.6	62.2	62.6	63.4	63.8	63.6	62.9
6 Unemployment Rate (%)	4.6	4.5	3.7	4.3	5.8	5.9	4.9	4.5	4.6	4.3	5.5
7 Nonfarm Payroll Emp. (000)	3,801.3	3,901.1	3,994.5	3,997.2	3,983.9	3,978.8	3,999.1	4,039.1	4,071.0	4,078.9	4,058.3
8 Priv. Sec. Nonfarm Emp. (000)	3,229.6	3,323.5	3,405.7	3,394.6	3,370.4	3,356.9	3,365.7	3,397.5	3,423.7	3,431.2	3,407.1
9 Construction Emp. (000)	136.1	143.6	149.6	158.8	162.6	160.5	165.9	169.1	174.9	172.3	164.8
10 Manufacturing Emp. (000)	429.4	422.5	421.6	401.2	367.5	350.4	338.2	330.4	323.8	311.3	298.9
11 Trade, Transportation and Utilities Emp. (000)	847.6	873.7	899.0	890.7	881.4	876.2	874.7	877.3	874.9	874.5	864.0
12 Information Emp. (000)	118.9	123.0	126.9	126.4	113.2	102.0	98.0	97.1	97.4	96.0	92.4
13 Financial Activities Emp. (000)	248.7	260.8	266.9	269.8	276.7	276.2	276.9	279.7	279.2	275.7	269.3
14 Professional and Business Services Emp. (000)	554.0	579.1	598.5	592.5	581.1	578.2	584.5	592.5	604.6	616.6	614.9
15 Education and Health Services Emp. (000)	466.1	480.9	495.8	505.4	527.1	538.0	546.4	558.4	568.4	579.7	592.0
16 Leisure & Hospitality Emp. (000)	294.2	300.0	303.3	304.2	311.0	321.4	325.5	333.4	338.5	340.0	344.2
17 CPI-U for the US ('82-'84=100)	163.0	166.6	172.2	177.1	179.9	184.0	188.9	195.3	201.6	207.3	215.3
18 US Consumer Confidence Index	131.7	135.3	139.0	106.6	96.6	79.8	96.1	100.3	105.9	103.4	58.0
19 Total Dwelling Units (No.) - F	2,612	2,665	2,880	2,356	2,538	2,715	2,995	3,219	2,862	2,117	1,531
20 Single-Fam. Dwell. Units (No.) - F	2,122	2,094	2,103	1,793	1,864	1,820	1,870	1,856	1,428	1,090	765
21 Multi-Fam. Dwell. Units (No.) - F	374	424	515	347	435	580	728	976	1,035	777	677
22 Tot. New Vehicle Regis. (No.)	45,884	50,990	55,301	54,624	53,865	53,584	53,510	51,784	50,473	50,664	44,103
23 New Passenger Car Regis. (No.)	29,047	31,201	33,120	31,667	30,183	28,149	26,631	26,199	26,572	26,770	24,950
24 New Lt. Truck/Van Regis. (No.)	16,837	19,790	22,182	22,957	23,683	25,435	26,879	25,591	23,901	23,895	19,154
25 Wks. Claimed Wkly. Avg. (000)	90.2	90.8	84.3	108.4	132.4	130.9	122.6	112.9	107.9	112.0	131.6
26 Insured Unemp. Rate (%)	2.6	2.5	2.3	2.9	3.5	3.5	3.2	3.0	2.8	2.9	3.4
Initial Claims Wkly. Avg. (No.)	9,454	9,003	9,056	10,637	11,595	11,331	10,730	10,323	10,116	10,560	11,886
27 Exhaustions (No.)	9,360	9,757	9,138	11,136	16,686	16,317	14,034	12,179	11,213	11,593	13,509

Notes: See page S-32 for data sources. Data shown using latest available benchmarks. For Dwelling Unit data, "F"=Final.

Employment Data**New Jersey Nonfarm Payroll Employment (000)**

(seasonally adjusted)

NAICS Industry	2008						2009						
	Jul	Aug	Sep	Oct	Nov	Dec	Jan	Feb	Mar	Apr	May	Jun	Jul
Total Nonfarm (1)*	4,058.3	4,051.1	4,046.6	4,037.4	4,014.6	4,000.5	3,987.8	3,973.3	3,960.0	3,941.3	3,933.3	3,930.2	3,936.1
Total Private Sector*	3,406.5	3,401.4	3,396.5	3,382.9	3,361.5	3,348.1	3,335.8	3,322.8	3,309.1	3,289.2	3,282.0	3,279.8	3,292.8
Goods Producing*	466.1	463.6	461.6	456.0	450.5	444.5	435.4	429.6	426.7	419.8	414.4	415.4	421.9
Natural Resources and Mining**	1.7	1.7	1.7	1.7	1.7	1.7	1.5	1.5	1.6	1.6	1.7	1.7	1.7
Construction	164.4	163.1	162.3	161.8	158.7	156.6	153.8	151.2	151.9	146.8	141.3	140.9	144.3
Manufacturing*	300.0	298.8	297.6	292.5	290.1	286.2	280.1	276.9	273.2	271.4	271.4	272.8	275.9
Durable Goods	135.5	135.0	134.2	132.8	130.9	128.9	125.9	122.6	120.6	120.2	120.1	120.4	122.5
Non-Durable Goods	164.5	163.8	163.4	159.7	159.2	157.3	154.2	154.3	152.6	151.2	151.3	152.4	153.4
Service-Providing*	3,592.2	3,587.5	3,585.0	3,581.4	3,564.1	3,556.0	3,552.4	3,543.7	3,533.2	3,521.5	3,518.9	3,514.8	3,514.2
Private Service-Providing*	2,940.4	2,937.8	2,934.9	2,926.9	2,911.0	2,903.6	2,900.4	2,893.2	2,882.4	2,869.4	2,867.6	2,864.4	2,870.9
Trade, Transportation, & Utilities*	865.4	864.7	863.3	855.2	848.6	844.0	851.3	853.5	851.7	847.7	843.9	843.7	839.2
Wholesale Trade	231.4	230.9	230.7	229.9	230.2	230.4	231.4	228.4	228.0	227.2	226.4	225.2	222.6
Retail Trade	459.5	459.1	459.0	453.9	447.4	443.7	449.3	455.3	455.9	454.9	452.9	452.6	452.6
Trans., Warehousing, and Utilities	174.5	174.7	173.6	171.4	171.0	169.9	170.6	169.8	167.8	165.6	164.6	165.9	164.0
Information	92.0	91.8	91.5	90.7	90.2	90.1	90.4	89.8	88.9	90.1	88.8	87.7	88.6
Financial Activities*	268.8	268.7	268.0	264.4	260.1	260.8	259.6	258.8	259.2	259.0	258.2	256.6	256.0
Finance and Insurance	209.3	209.1	208.3	203.0	199.2	200.4	203.4	204.2	204.6	204.7	203.2	202.2	198.7
Real Estate/Rental & Leasing	59.5	59.6	59.7	61.4	60.9	60.4	56.2	54.6	54.6	54.3	55.0	54.4	57.3
Prof. and Business Services*	616.8	615.3	613.7	606.3	603.7	599.3	591.5	584.4	581.1	577.8	578.3	578.3	581.5
Prof., Sci., & Tech. Services	290.5	290.5	290.4	291.8	290.0	288.4	281.5	280.2	280.0	275.2	273.1	274.2	274.0
Mgmt. of Companies & Enterprises	75.3	75.1	75.1	74.3	73.9	73.7	75.5	75.1	74.6	75.0	74.9	74.8	75.3
Adm/Support, Waste Mgt/ Remed. Svs.	251.0	249.7	248.2	240.2	239.8	237.2	234.5	229.1	226.5	227.6	230.3	229.3	232.2
Educational and Health Services*	590.1	591.0	591.8	599.8	599.9	600.3	597.9	599.1	598.3	599.2	597.7	596.7	596.2
Educational Services	90.3	90.2	90.7	94.8	93.7	94.8	94.2	96.3	95.8	94.3	92.6	91.6	91.3
Health Care and Social Assistance	499.8	500.8	501.1	505.0	506.2	505.5	503.7	502.8	502.5	504.9	505.1	505.1	504.9
Leisure and Hospitality*	341.6	340.2	340.5	344.3	346.0	345.7	346.0	343.4	340.1	332.8	336.6	333.6	339.8
Arts, Entertainment, & Recreation	53.7	53.8	53.1	54.3	55.5	56.0	56.4	56.6	55.4	51.0	52.1	51.2	56.5
Accommodation and Food Svs.	287.9	286.4	287.4	290.0	290.5	289.7	289.6	286.8	284.7	281.8	284.5	282.4	283.3
Other Services (2)	165.7	166.1	166.1	166.2	162.5	163.4	163.7	164.2	163.1	162.8	164.1	167.8	169.6
Total Government*	651.8	649.7	650.1	654.5	653.1	652.4	652.0	650.5	650.9	652.1	651.3	650.4	643.3
Federal Government	59.9	59.8	59.6	59.8	58.8	58.7	59.3	58.9	58.8	60.7	60.7	59.0	58.7
State Government (3)	153.6	152.1	152.5	151.2	150.1	148.3	148.9	147.2	147.5	146.7	146.0	146.9	147.8
Local Government	438.3	437.8	438.0	443.5	444.2	445.4	443.8	444.4	444.6	444.7	444.6	444.5	436.8

Notes:

1. Nonfarm payroll employment includes civilians on nonfarm establishment payrolls who worked or received pay for any part of the pay period including the 12th of the month. It excludes proprietors, self-employed, unpaid family members and domestics in private households. All data are revised to March 2008 benchmarks. Individual series may not add to sector or supersector totals because not all sector/supersector components are published.
2. "Other Services" include: Repair and maintenance; Personal and laundry services; Religious, grantmaking, civic, professional and similar organizations.
3. The total number of state employees reported under this heading is determined on the basis of a definition developed by the US Bureau of Labor Statistics which is standardized throughout the nation. The definition includes both full- and part-time workers in the executive departments, the legislature, and the judiciary, as well as all employees of authorities, commissions, the state universities and colleges, and other agencies not included on the central payroll.

* Seasonally adjusted total has been indirectly computed from the sum of the underlying industries.

** The industry is not seasonally adjusted because seasonality is not statistically significant.

Employment Data

New Jersey Nonfarm Payroll Employment (000)

(not seasonally adjusted)

NAICS Industry	2008					2009							
	Jul	Aug	Sep	Oct	Nov	Dec	Jan	Feb	Mar	Apr	May	Jun	Jul
Total Nonfarm (1)	4,081.3	4,052.3	4,042.9	4,059.4	4,052.3	4,036.2	3,916.5	3,899.0	3,913.1	3,925.6	3,952.0	3,992.9	3,961.0
Total Private Sector	3,453.8	3,440.1	3,409.3	3,396.9	3,387.2	3,372.3	3,265.8	3,239.6	3,251.4	3,261.9	3,291.5	3,332.5	3,342.5
Goods Producing	473.0	472.0	468.5	462.2	455.2	446.7	422.6	413.1	415.1	416.3	416.1	422.4	428.6
Natural Resources and Mining	1.7	1.7	1.7	1.7	1.7	1.7	1.5	1.5	1.6	1.6	1.7	1.7	1.7
Construction	171.0	170.6	168.3	167.1	162.2	157.8	143.5	136.9	141.2	144.0	143.3	146.1	150.9
Construction of Buildings	39.1	38.8	38.0	37.3	37.0	37.8	35.6	34.3	33.8	33.0	32.2	34.1	33.9
Residential Building Construction	25.8	25.6	25.2	25.2	24.8	24.7	24.4	23.4	23.0	22.4	22.3	23.6	24.0
Heavy and Civil Engineering	19.7	19.6	19.5	19.9	19.5	18.1	15.1	15.2	16.1	17.4	18.2	18.5	19.4
Specialty Trade Contractors	112.2	112.2	110.8	109.9	105.7	101.9	92.8	87.4	91.3	93.6	92.9	93.5	97.6
Building Equipment Contractors	54.8	55.0	54.5	54.6	54.7	54.2	50.6	48.6	48.7	46.9	46.8	47.7	49.0
Manufacturing	300.3	299.7	298.5	293.4	291.3	287.2	277.6	274.7	272.3	270.7	271.1	274.6	276.0
Durable Goods	135.9	135.2	134.5	132.9	130.9	129.2	124.9	121.9	120.5	120.2	120.2	121.4	122.6
Fabricated Metal Product	26.4	26.3	25.9	25.8	25.8	25.7	25.2	25.1	25.1	25.1	25.2	25.4	25.1
Machinery Manufacturing	16.6	16.5	16.5	16.4	16.3	16.4	16.3	16.2	16.2	16.0	16.0	16.1	16.1
Computer and Electronic Products	30.8	30.7	30.6	30.6	30.6	30.4	30.1	30.0	30.0	30.0	30.0	30.3	30.3
Navig., Meas, Electromedical & Control Inst.	15.8	15.7	15.6	15.6	15.7	15.6	15.6	15.6	15.6	15.5	15.6	15.6	15.6
Transportation Equip. Mfg.	5.8	5.7	5.7	5.7	5.7	5.7	5.6	5.6	5.3	5.3	5.3	5.3	5.1
Miscellaneous Mfg.	20.5	20.3	20.3	20.3	20.2	20.0	19.2	19.2	19.5	19.5	19.6	19.7	19.7
Non-Durable Goods	164.4	164.5	164.0	160.5	160.4	158.0	152.7	152.8	151.8	150.5	150.9	153.2	153.4
Food Manufacturing	29.8	29.9	29.8	30.0	31.0	31.1	30.8	30.9	30.9	30.6	30.6	31.0	31.4
Paper Manufacturing	13.3	13.3	13.5	13.4	13.4	13.3	13.3	13.2	13.2	13.1	13.0	13.1	12.8
Printing and Related Support	21.1	21.1	21.0	20.8	20.8	20.7	20.4	20.2	20.2	20.1	20.0	19.9	19.6
Chemical Manufacturing	65.6	65.2	65.2	65.0	64.8	64.6	63.6	64.2	63.8	63.3	63.2	63.6	63.1
Basic Chemical Manufacturing	8.5	8.5	8.5	8.5	8.5	8.5	8.6	8.5	8.5	8.5	8.5	8.6	8.4
Pharmaceutical and Medicine	38.4	37.7	37.6	37.7	37.7	37.6	37.3	37.1	37.2	37.1	37.3	37.5	37.5
Plastics and Rubber Products	16.5	16.5	16.4	16.3	16.3	16.1	15.8	15.7	15.6	15.6	15.6	15.6	15.3
Service-Providing	3,608.3	3,580.3	3,574.4	3,597.2	3,597.1	3,589.5	3,493.9	3,485.9	3,498.0	3,509.3	3,535.9	3,570.5	3,532.4
Private Service-Providing	2,980.8	2,968.1	2,940.8	2,934.7	2,932.0	2,925.6	2,843.2	2,826.5	2,836.3	2,845.6	2,875.4	2,910.1	2,913.9
Trade, Transportation, & Utilities	863.2	859.4	859.2	858.4	870.4	872.6	843.9	836.3	837.8	835.6	840.8	849.1	838.0
Wholesale Trade	232.7	231.7	230.7	228.6	234.9	232.8	229.2	226.1	225.9	225.9	226.1	226.1	223.6
Merchant Wholesalers, Durable Goods	116.7	116.4	115.7	113.7	117.4	116.5	113.3	111.7	111.4	110.6	110.7	110.1	108.0
Professional & Comm. Equip., & Supplies	32.2	32.2	32.1	32.1	32.8	32.9	32.7	32.7	32.6	32.7	32.6	32.5	32.5
Grocery and Related Product - Nondurable Goods	29.2	29.0	28.9	28.9	28.9	28.8	28.5	28.5	28.5	28.5	28.8	29.0	28.9
Wholesale Electronic Markets, Agents and Brokers	31.4	31.2	31.1	30.9	32.6	33.1	33.6	32.8	32.8	33.0	33.1	33.2	33.3

See notes on page S-23. Shaded rows on pp. 24-27 indicate employment at the NAICS supersector level.

Employment Data**New Jersey Nonfarm Payroll Employment (000)**

(not seasonally adjusted)

NAICS Industry	2008						2009						
	Jul	Aug	Sep	Oct	Nov	Dec	Jan	Feb	Mar	Apr	May	Jun	Jul
Retail Trade	461.6	459.5	453.6	454.6	460.8	466.7	446.0	442.0	444.7	445.0	449.3	455.5	454.8
Motor Vehicle and Parts Dealers	46.6	46.5	45.9	45.6	45.2	45.0	44.7	45.2	45.4	45.7	45.7	45.9	46.0
Automobile Dealers	33.7	33.6	33.3	33.1	32.8	32.5	32.2	32.3	32.3	32.3	32.1	32.2	32.2
Furniture and Home Furnishings Stores	17.9	17.8	17.6	17.9	19.0	19.6	18.1	17.5	17.4	17.1	17.0	16.7	16.5
Electronics and Appliance Stores	16.7	16.8	16.8	17.2	18.2	18.7	17.9	18.0	17.9	17.8	17.7	17.7	17.9
Building Mat. & Garden Equip. & Supp. Dlr.	34.9	34.0	33.5	33.5	33.1	32.6	31.5	31.7	31.7	32.9	34.1	34.0	33.3
Food and Beverage Stores	112.2	111.8	109.4	106.8	107.2	109.4	105.3	105.9	106.7	107.8	110.0	111.4	110.7
Health and Personal Care Stores	38.3	38.2	37.9	38.0	38.3	38.2	37.4	37.3	36.7	36.8	36.7	37.1	37.0
Clothing and Clothing Accessories Stores	60.1	60.0	58.2	60.7	66.0	67.9	60.8	58.6	58.4	59.5	60.5	61.8	60.4
Sporting Goods, Hobby, Book, & Music Stores	19.6	19.8	19.9	20.1	21.3	22.3	19.9	18.9	19.0	18.9	18.6	18.9	18.9
General Merchandise Stores	65.8	65.8	66.0	66.5	70.3	71.6	66.0	63.3	65.0	63.9	64.5	65.2	65.1
Department Stores	51.8	51.8	52.3	52.8	56.4	57.2	52.5	50.5	52.1	51.1	51.4	51.9	51.4
Transportation, Warehousing, and Utilities	168.9	168.2	174.9	175.2	174.7	173.1	168.7	168.2	167.2	164.7	165.4	167.5	159.6
Utilities	12.2	12.2	12.0	12.0	12.0	12.1	12.3	12.2	12.5	12.5	12.6	12.9	12.9
Elec.Pwr Gen., Transmission & Distribution	6.0	6.0	5.9	6.0	6.0	6.0	6.0	6.0	6.1	6.1	6.1	6.2	6.4
Natural Gas Distribution	3.9	3.9	3.8	3.8	3.8	3.8	3.9	3.9	4.0	4.0	4.0	4.1	4.1
Transportation and Warehousing	156.7	156.0	162.9	163.2	162.7	161.0	156.4	156.0	154.7	152.2	152.8	154.6	146.7
Air Transportation	18.5	18.4	18.3	18.1	18.2	18.3	18.3	18.3	18.5	18.5	18.6	18.6	18.6
Truck Transportation	36.6	36.7	36.6	35.7	35.6	34.7	32.5	33.2	33.1	33.6	33.5	33.9	32.7
General Freight Trucking	27.4	27.5	27.6	27.4	26.9	26.7	25.8	26.0	25.9	26.1	26.1	26.0	25.9
Transit and Ground Passenger Transportation	24.0	22.5	30.3	31.2	30.8	30.7	30.4	30.7	30.9	29.8	30.6	30.8	24.0
Support Activities for Transportation	22.0	22.0	21.8	21.9	21.8	21.9	21.6	21.6	21.7	21.4	21.3	21.5	21.5
Couriers and Messengers	22.9	23.5	23.3	22.9	23.9	26.8	22.5	22.6	22.6	22.3	22.4	22.5	22.7
Warehousing and Storage	27.7	27.9	27.8	28.0	28.2	28.2	28.1	28.0	28.0	27.7	27.7	27.7	27.8
Information	92.1	92.1	91.2	90.8	90.7	90.7	90.0	89.0	88.8	89.6	88.6	88.1	88.7
Publishing Industries (except Internet)	26.8	26.8	26.6	26.5	26.6	26.7	26.1	26.0	25.8	25.8	25.3	25.3	25.2
Telecommunications	40.4	40.4	40.2	40.2	40.3	40.3	40.3	40.3	40.2	39.8	39.7	39.8	39.4
Wired Telecommunications Carriers	31.9	31.9	31.7	31.8	32.0	32.0	32.1	32.3	32.5	32.2	32.3	32.4	32.2
Internet Serv. Prvdrs., Web Srch. Portals & D.P.S.	9.2	9.1	9.0	8.9	8.9	8.9	8.7	8.7	8.7	8.6	8.5	8.5	8.5
Financial Activities	272.8	272.1	267.7	264.0	259.7	260.8	257.9	256.6	257.5	257.7	258.1	259.1	258.7
Finance and Insurance	211.5	210.7	207.3	202.5	198.9	200.6	203.0	203.6	204.2	204.3	203.0	203.3	200.0
Credit Intermediation & Related Activities	73.0	72.6	71.6	70.3	67.9	68.1	67.6	68.0	68.1	68.0	67.6	68.4	68.1
Depository Credit Intermediation	51.0	51.2	50.6	50.4	50.6	50.8	50.8	50.9	51.2	51.1	51.0	51.4	51.1
Nondepository Credit Interditiion	16.4	16.0	15.5	15.2	14.9	14.4	13.6	13.3	13.0	13.0	13.0	12.9	13.1

See notes on page S-23. Shaded rows on pp. 24-27 indicate employment at the NAICS supersector level.

Employment Data

New Jersey Nonfarm Payroll Employment (000)

(not seasonally adjusted)

NAICS Industry	2008						2009						
	Jul	Aug	Sep	Oct	Nov	Dec	Jan	Feb	Mar	Apr	May	Jun	Jul
Securities, Commodity Contracts & Other	55.0	54.7	53.1	52.7	52.5	52.8	52.7	50.8	50.7	50.8	50.4	50.5	50.5
Scrty & Comdty Contracts Intermed & Brkrage	41.9	41.6	40.1	39.6	39.4	39.8	40.0	40.0	40.0	40.5	40.3	40.7	40.7
Ins. Carriers & Rel Activities	82.2	81.9	81.3	81.1	80.7	80.7	83.0	83.0	83.1	82.4	82.2	81.7	80.7
Insurance Carriers	51.4	51.1	50.7	50.5	50.5	50.5	49.9	49.9	50.3	50.0	49.7	49.3	49.1
Agencies, Brkrages, & other Ins. Rel. Activities	30.8	30.8	30.6	30.6	30.2	30.2	33.1	33.1	32.8	32.4	32.5	32.4	31.6
Real Estate/Rental & Leasing	61.3	61.4	60.4	61.5	60.8	60.2	54.9	53.0	53.3	53.4	55.1	55.8	58.7
Real Estate	41.9	41.9	41.1	42.7	42.1	41.8	37.1	35.9	36.6	36.6	37.6	37.9	40.3
Rental and Leasing Svcs.	18.4	18.5	18.3	18.2	18.2	18.1	17.3	17.2	17.1	17.4	17.5	17.9	17.7
Professional & Business Svcs.	624.7	624.9	618.4	613.4	609.2	599.9	574.1	566.6	570.4	575.6	579.3	585.1	590.4
Professional, Sci., & Tech. Svcs.	291.9	291.1	287.7	291.7	290.3	289.1	279.2	278.8	279.7	276.2	272.1	275.7	275.9
Legal Services	41.6	41.1	40.6	40.1	39.7	39.3	38.4	39.0	39.2	39.1	38.8	39.7	39.3
Accounting/Tax Prep/Bookkeep/ Payroll Services	35.8	36.0	35.3	35.4	35.8	35.0	34.3	35.5	34.8	35.4	32.5	32.5	32.8
Architectural, Engineering & Related Services	41.7	41.4	40.7	41.8	41.4	40.4	38.2	37.9	37.2	38.3	38.7	40.1	39.7
Computer Systems Design & Related Services	63.8	64.0	63.4	64.4	62.7	63.6	58.8	58.5	58.1	55.9	55.4	56.1	56.1
Management, Sci & Tech Con- sulting Services	36.6	36.9	36.1	36.1	36.7	37.1	38.1	37.4	39.4	36.7	36.8	37.3	37.7
Scientific Research & Develop ment Services	31.8	31.4	31.2	31.1	31.0	31.1	30.9	30.8	31.0	30.9	31.1	31.4	31.5
Advertising and Related Services	16.5	16.4	16.4	16.5	16.6	16.7	16.2	16.3	16.4	16.5	16.4	16.4	16.3
Management of Companies and Enterprises	75.6	75.4	74.8	74.2	74.1	74.3	75.1	74.7	74.5	74.6	74.4	75.1	75.4
Adm/Support Waste Mgt/ Reme- diation Services	257.2	258.4	255.9	247.5	244.8	236.5	219.8	213.1	216.2	224.8	232.5	234.3	239.1
Employment Services	90.0	91.7	91.7	88.3	88.0	84.0	73.1	69.0	70.1	70.0	74.2	71.9	75.2
Business Support Services	17.3	17.1	17.3	17.1	17.5	17.9	17.4	17.6	17.8	17.8	17.7	17.9	17.6
Investigation & Security Svcs.	28.2	28.3	28.1	28.1	28.2	28.2	28.1	28.0	28.0	28.0	28.1	28.2	28.0
Svcs. to Buildings & Dwellings	72.0	71.3	69.4	65.9	62.7	56.0	52.6	48.6	51.7	58.2	62.2	65.7	67.4
Educational & Health Services	585.2	582.1	587.6	601.5	603.6	604.4	595.3	598.6	600.5	601.3	601.7	599.4	591.9
Educational Services	85.6	83.1	88.4	96.8	96.4	97.4	92.6	97.1	97.9	96.5	95.4	91.6	87.0
Elementary and Secondary Schools	33.0	31.9	35.6	36.6	36.9	36.5	36.2	36.6	36.8	36.6	37.0	36.6	32.6
Colleges, Universities, and Professional Schools	26.5	26.2	29.0	32.1	31.6	31.9	27.5	31.0	31.8	32.0	31.4	28.5	27.7
Health Care and Social As- sistance	499.6	499.0	499.2	504.7	507.2	507.0	502.7	501.5	502.6	504.8	506.3	507.8	504.9
Ambulatory Health Care Svcs.	183.0	183.1	183.2	185.2	186.1	186.3	183.4	184.7	185.6	186.7	188.2	190.0	190.5
Offices of Physicians	69.0	69.1	68.9	69.2	69.4	69.1	68.7	69.1	70.5	70.9	71.1	71.1	71.3
Offices of Dentists	27.9	27.9	27.9	27.7	28.0	28.0	27.4	27.7	27.6	27.8	27.9	27.4	27.7
Home Health Care Services	30.4	30.5	30.8	30.9	30.9	31.3	30.1	29.9	30.3	30.3	30.7	31.0	31.0

See notes on page S-23. Shaded rows on pp. 24-27 indicate employment at the NAICS supersector level.

Employment Data**New Jersey Nonfarm Payroll Employment (000)**

(not seasonally adjusted)

NAICS Industry	2008						2009						
	Jul	Aug	Sep	Oct	Nov	Dec	Jan	Feb	Mar	Apr	May	Jun	Jul
Hospitals	156.8	156.6	156.3	156.6	156.6	155.8	155.0	153.7	152.9	153.5	152.9	153.8	155.2
Nursing and Residential Care Facilities	84.4	84.7	84.2	84.8	85.1	84.7	83.6	83.3	83.8	84.4	84.6	84.5	84.5
Nursing Care Facilities	48.7	48.8	48.5	48.6	48.8	48.8	48.7	48.6	48.8	49.0	49.1	49.1	49.4
Community Care Facilities for the Elderly	18.3	18.4	18.3	18.3	18.4	18.5	18.5	18.6	18.7	18.4	18.6	18.7	18.8
Social Assistance	75.4	74.6	75.5	78.1	79.4	80.2	80.7	79.8	80.3	80.2	80.6	79.5	74.7
Child Day Care Services	35.1	34.6	36.7	37.6	37.7	38.0	37.8	37.9	38.2	38.2	38.5	38.2	35.4
Leisure and Hospitality	374.1	369.8	352.3	340.9	337.0	335.1	321.5	318.1	320.2	323.2	341.6	358.0	372.5
Arts, Entertainment, and Recreation	70.5	69.2	56.8	52.8	50.8	50.0	45.4	45.5	46.6	48.2	53.6	60.7	73.2
Amusement, Gambling & Recreation Industries	58.1	57.2	45.3	41.3	39.7	39.3	36.1	36.2	37.2	38.3	43.7	49.7	63.5
Accommodation and Food Services	303.6	300.6	295.5	288.1	286.2	285.1	276.1	272.6	273.6	275.0	288.0	297.3	299.3
Accommodation	72.5	71.7	68.1	65.6	63.3	63.0	61.5	60.7	60.1	59.9	61.5	62.7	67.2
Casino Hotels	40.2	39.5	39.2	37.9	37.2	36.2	35.4	34.7	34.5	34.0	34.5	35.0	36.9
Food Services and Drinking Places	231.1	228.9	227.4	222.5	222.9	222.1	214.6	211.9	213.5	215.1	226.5	234.6	232.1
Full-Service Restaurants	108.4	107.8	102.2	98.8	96.7	97.6	95.3	93.3	93.9	95.5	101.6	108.3	113.2
Limited-Service Eating Places	92.6	91.8	87.3	86.1	86.3	84.6	83.2	82.1	83.1	82.8	86.2	87.5	86.0
Special Food Services	20.0	19.2	28.5	28.8	31.1	31.0	27.6	28.0	28.0	28.2	29.7	29.2	23.2
Drinking Places (Alcoholic Beverages)	10.1	10.1	9.4	8.8	8.8	8.9	8.5	8.5	8.5	8.6	9.0	9.6	9.7
Other Services	168.7	167.7	164.4	165.7	161.4	162.1	160.5	161.3	161.1	162.6	165.3	171.3	173.7
Repair and Maintenance	36.2	36.0	35.9	34.7	34.7	34.4	34.6	34.3	34.4	34.2	34.1	33.8	33.7
Automotive Repair and Maintenance	26.0	25.9	25.8	24.9	24.9	23.8	24.1	23.4	23.4	23.3	23.6	23.3	23.2
Personal and Laundry Services	50.8	50.6	50.7	51.4	48.5	49.5	49.9	49.2	49.2	50.5	51.9	54.4	55.1
Personal Care Services	30.2	30.1	30.4	30.2	30.2	30.4	30.1	29.9	30.2	30.6	30.9	31.2	30.7
Religious, Grantmaking, Civic, Professional & Similar Orgs.	81.7	81.1	77.8	79.6	78.2	78.2	76.0	77.8	77.5	77.9	79.3	83.1	84.9
Government	627.5	612.2	633.6	662.5	665.1	663.9	650.7	659.4	661.7	663.7	660.5	660.4	618.5
Federal Government	60.5	60.3	59.6	59.8	58.6	59.1	58.9	58.2	58.2	60.5	60.7	59.3	59.5
Other Federal Government	18.1	18.1	17.8	17.7	17.7	17.8	17.6	17.6	17.7	19.6	20.6	18.8	18.6
Department of Defense	14.1	14.3	14.0	14.2	13.4	13.5	13.6	13.6	13.6	13.7	13.7	14.2	14.2
U.S. Postal Service	28.3	27.9	27.8	27.9	27.5	27.8	27.7	27.0	26.9	27.2	26.4	26.3	26.7
State Government	148.8	146.2	150.5	154.3	153.2	150.4	145.9	149.8	150.4	150.1	146.6	143.8	143.4
State Government Education	44.8	44.0	48.8	52.5	52.2	50.4	45.0	49.1	49.3	49.5	45.7	43.0	43.0
State Government Hospitals	12.0	11.9	11.9	12.1	12.1	12.2	12.2	12.2	12.2	12.2	12.2	12.2	12.2
Other State Government	92.0	90.3	89.8	89.7	88.9	87.8	88.7	88.5	88.9	88.4	88.7	88.6	88.2
Exec./Leg./Judicial *	78.9	77.4	77.1	77.1	76.9	76.8	76.8	76.9	76.9	76.6	76.3	76.5	76.0
Local Government	418.2	405.7	423.5	448.4	453.3	454.4	445.9	451.4	453.1	453.1	453.2	457.3	415.6
Local Government Education	230.2	220.9	250.1	277.1	282.7	283.9	276.8	282.5	285.2	285.2	283.6	283.2	230.3
Other Local Government	188.0	184.8	173.4	171.3	170.6	170.5	169.1	168.9	167.9	167.9	169.6	174.1	185.3

See notes on page S-23. Shaded rows on pp. 24-27 indicate employment at the NAICS supersector level.

Hours and Earnings Data

Production/Non-supervisory Workers in New Jersey

NAICS Industry	2008					2009							
	Jul	Aug	Sep	Oct	Nov	Dec	Jan	Feb	Mar	Apr	May	Jun	Jul
Average Weekly Hours of Production / Non-supervisory Workers¹													
Manufacturing (production)	41.8	41.6	41.5	40.8	41.1	41.5	41.2	41.2	41.3	40.6	41.2	41.4	41.4
Durable Goods	42.5	42.2	41.8	40.9	41.5	40.9	40.8	41.0	41.0	40.6	40.6	41.2	40.9
Nondurable Goods	41.2	41.0	41.3	40.7	40.8	42.1	41.6	41.4	41.5	40.7	41.7	41.5	41.9
Information⁴	34.5	34.3	34.7	34.6	34.8	34.9	34.4	34.7	34.3	34.4	34.8	34.3	35.0
Average Hourly Gross Dollar Earnings²													
Manufacturing (production)	17.88	17.93	17.99	17.73	17.89	18.37	18.39	18.45	18.52	18.60	18.51	18.53	18.38
Durable Goods	19.68	19.88	19.93	20.17	20.25	21.10	21.10	21.23	21.33	21.32	21.30	21.17	21.10
Nondurable Goods	16.24	16.18	16.29	15.60	15.81	16.10	16.10	16.14	16.12	16.24	16.18	16.29	16.09
Information⁴	31.53	31.52	31.18	30.06	29.86	29.13	28.86	28.60	29.16	28.27	27.97	27.72	27.16
Average Weekly Gross Dollar Earnings³													
Manufacturing (production)	747.38	745.89	746.59	723.38	735.28	762.36	757.67	760.14	764.88	755.16	762.61	767.14	760.93
Durable Goods	836.40	838.94	833.07	824.95	840.38	862.99	860.88	870.43	874.53	865.59	864.78	872.20	862.99
Nondurable Goods	669.09	663.38	672.78	634.92	645.05	677.81	669.76	668.20	668.98	660.97	674.71	676.04	674.17
Information⁴	1,087.79	1,081.14	1,081.95	1,040.08	1,039.13	1,016.64	992.78	992.42	1,000.19	972.49	973.36	950.80	950.60

* Eight manufacturing production series were deleted because these series failed to meet the criteria established by the Bureau of Labor Statistics and will no longer be published.

- (1) Average hours worked or paid are affected by labor turnover, changes in overtime hours and part-time employment.
- (2) Hourly earnings include paid holidays, vacation and sick leave. They are affected by changes in workforce composition and in wage rates.
- (3) Weekly earnings are affected by premium pay, shift differentials, piecework and incentive payments, length of workweek and other factors.
- (4) Non-supervisory workers. The Information Supersector includes the Publishing Industries, Telecommunications, and Internet Service Providers, Web Search Portal, and Data Processing Service Sectors.

Comparative Trends

US and New Jersey Civilian Labor Force Trends 1983-2009 (000)

Date	Labor Force		Employment		Unemployment Volume		Unemployment Rate (%)	
	US	NJ	US	NJ	US	NJ	US	NJ
Annual Averages: 1983-2008								
1983	111,550	3,673.0	100,834	3,385.0	10,717	288.0	9.6	7.8
1984	113,544	3,825.0	105,005	3,589.0	8,539	236.0	7.5	6.2
1985	115,461	3,839.0	107,150	3,621.0	8,312	217.0	7.2	5.7
1986	117,834	3,908.0	109,597	3,712.0	8,237	197.0	7.0	5.0
1987	119,865	3,966.0	112,440	3,806.0	7,425	160.0	6.2	4.0
1988	121,669	3,975.0	114,968	3,824.0	6,701	151.0	5.5	3.8
1989	123,869	3,989.0	117,342	3,826.0	6,528	163.0	5.3	4.1
1990	125,840	4,072.5	118,793	3,865.0	7,047	207.5	5.6	5.1
1991	126,346	4,050.4	117,718	3,776.6	8,628	273.7	6.8	6.8
1992	128,105	4,051.9	118,492	3,709.5	9,613	342.4	7.5	8.4
1993	129,200	4,034.6	120,259	3,727.3	8,940	307.3	6.9	7.6
1994	131,056	4,067.5	123,060	3,790.0	7,996	277.5	6.1	6.8
1995	132,304	4,111.8	124,900	3,846.3	7,404	265.5	5.6	6.5
1996	133,943	4,184.1	126,708	3,925.8	7,236	258.3	5.4	6.2
1997	136,297	4,257.4	129,558	4,031.0	6,739	226.4	4.9	5.3
1998	137,673	4,242.4	131,463	4,047.1	6,210	195.3	4.5	4.6
1999	139,368	4,284.6	133,488	4,092.7	5,880	191.8	4.2	4.5
2000	142,583	4,287.8	136,891	4,130.3	5,692	157.5	4.0	3.7
2001	143,734	4,302.3	136,933	4,117.5	6,801	184.8	4.7	4.3
2002	144,863	4,370.8	136,485	4,117.3	8,378	253.5	5.8	5.8
2003	146,510	4,363.9	137,736	4,108.4	8,774	255.5	6.0	5.9
2004	147,401	4,358.9	139,252	4,144.2	8,149	214.7	5.5	4.9
2005	149,320	4,416.1	141,730	4,218.5	7,591	197.6	5.1	4.5
2006	151,428	4,477.5	144,427	4,269.6	7,001	207.9	4.6	4.6
2007	153,124	4,462.3	146,047	4,271.7	7,078	190.6	4.6	4.3
2008	154,287	4,496.7	145,362	4,251.2	8,924	245.5	5.8	5.5
2008 Monthly Data: 2008-2009 (Seasonally Adjusted)*								
Jan	153,873	4,478.7	146,317	4,272.3	7,555	206.4	4.9	4.6
Feb	153,498	4,483.9	146,075	4,272.1	7,423	211.8	4.8	4.7
Mar	153,843	4,485.5	146,023	4,268.9	7,820	216.6	5.1	4.8
Apr	153,932	4,487.7	146,257	4,265.5	7,675	222.2	5.0	5.0
May	154,510	4,491.3	145,974	4,261.2	8,536	230.1	5.5	5.1
Jun	154,400	4,492.6	145,738	4,256.9	8,662	235.7	5.6	5.2
Jul	154,506	4,497.8	145,596	4,252.6	8,910	245.2	5.8	5.5
Aug	154,823	4,502.1	145,273	4,247.3	9,550	254.8	6.2	5.7
Sep	154,621	4,502.5	145,029	4,241.9	9,592	260.6	6.2	5.8
Oct	154,878	4,507.4	144,657	4,235.6	10,221	271.8	6.6	6.0
Nov	154,620	4,510.4	144,144	4,224.9	10,476	285.5	6.8	6.3
Dec	154,447	4,520.8	143,338	4,215.1	11,108	305.7	7.2	6.8
2009								
Jan	153,716	4,503.0	142,099	4,172.5	11,616	330.5	7.6	7.3
Feb	154,214	4,514.6	141,748	4,144.6	12,467	370.0	8.1	8.2
Mar	154,048	4,540.6	140,887	4,163.8	13,161	376.8	8.5	8.3
Apr	154,731	4,572.4	141,007	4,188.0	13,724	384.4	8.9	8.4
May	155,081	4,560.4	140,570	4,160.3	14,511	400.0	9.4	8.8
Jun	154,926	4,550.5	140,196	4,130.9	14,729	419.6	9.5	9.2
Jul	154,504	4,563.1	140,041	4,140.9	14,462	422.2	9.4	9.3
Aug								
Sep								
Oct								
Nov								
Dec								

* New Jersey monthly data are based on a different estimating procedure. Monthly data have been revised to incorporate updated seasonal adjustment factors which reflect the 2008 experience.

Characteristics of New Jersey's Unemployed (000)

			Percent Change From		
	July 2009	June 2009	July 2008	Month Ago	Year Ago
Total Insured Unemployed *	207.3	194.6	130.6	6.5	58.8
Total Insured Unemployed	195.7	221.2	123.1	-11.5	59.0
By Gender					
Male	122.9	131.7	71.5	-6.7	71.8
Female	86.8	87.3	55.1	-0.5	57.7
By Race					
White	121.5	138.2	74.8	-12.1	62.4
Black	36.0	36.5	25.7	-1.4	39.9
Asian	7.8	8.7	3.8	-10.4	107.0
Other	2.0	2.3	1.3	-9.9	62.6
Chose not To Answer	31.0	30.2	18.6	2.7	66.7
By Ethnicity					
Hispanic	39.0	40.8	24.1	-4.6	61.5
Not Hispanic	139.8	144.1	90.1	-3.0	55.0
Chose not to Answer	23.1	21.8	10.9	6.2	112.5
By Age of Claimant					
Under 25	19.9	20.7	11.4	-3.7	74.4
25 through 34 years	46.0	49.5	28.6	-7.2	60.8
35 through 44 years	44.7	46.5	29.1	-3.8	53.3
45 through 54 years	47.5	53.2	29.9	-10.7	59.1
55 through 64 years	30.5	34.9	18.7	-12.5	62.9
65 years and over	10.7	13.5	7.3	-20.6	46.8
By Duration of Unemployment					
1 to 2 weeks	22.4	27.9	20.8	-19.5	8.1
3 to 4 weeks	23.6	20.4	15.5	15.9	51.8
5 to 14 weeks	84.1	88.4	52.5	-4.8	60.2
15 weeks and over	79.4	79.7	37.2	-0.4	113.7
By Industry					
Goods Producing	43.3	46.7	25.4	-7.3	70.3
Construction	22.0	23.9	14.3	-7.8	53.5
Manufacturing	20.3	21.7	10.4	-6.8	95.1
Service Providing	155.2	162.5	98.0	-4.5	58.4
Trade, Transportation, Utilities	46.3	48.1	27.4	-3.9	69.1
Wholesale Trade	12.2	12.9	6.5	-5.8	87.3
Retail Trade	23.8	24.8	13.9	-3.9	70.6
Transportation & Warehousing	10.1	10.3	6.8	-1.3	49.3
Financial Activities	11.9	12.4	7.6	-3.7	58.0
Professional & Business Services	37.1	37.8	21.0	-2.0	76.4
Educational and Health Services	18.8	18.2	12.0	3.2	56.2
Leisure and Hospitality	15.8	17.8	11.4	-11.1	38.1
Other Services	4.8	4.8	2.9	-0.9	65.1
Government	2.3	3.2	2.0	-30.0	14.4

Notes: Totals may not add due to seasonal adjustment, rounding and differences in the availability of data.
 * Not seasonally adjusted

Statistical Section Notes

Adjustment of Data

Seasonal Adjustment. All tables/charts, unless otherwise specified, contain data that are seasonally adjusted using the **X-12 ARIMA** (Auto-Regressive Integrated Moving Average) method of seasonal adjustment developed by Statistics Canada.

The **X-12** procedure was used in a “two-step” process. One set of factors was generated for benchmarked estimates, based on absolute or universe counts of employment determined through Unemployment Insurance records. These factors were used to seasonally adjust historical, universe-based data through September 2007. A second set of factors was generated using the record of sample-based estimates, and applied to reprojected sample-based estimates for the last quarter of 2007 and sample-based estimates developed month by month in 2008.

Annual Revision and Internet Access

Annual revisions of the data series in *Economic Indicators* normally incorporate:

- (1) the latest benchmark — 2008 for the Resident Labor Force Indicators (Series 1-6) and 2008 for Establishment Employment Indicators (Series 7-16).
- (2) new seasonal adjustment factors, which usually affect at least five years of seasonally adjusted data, or the period from January 2004 forward.

Internet Access: Available on the Labor Planning & Analysis (LPA) Web site, <http://lwd.dol.state.nj.us/labor/lpa>, are:

- (1) the current month's *Economic Indicators* issue.
- (2) historical series when available, January 1976 to December 2008. This includes the latest annual revisions to unadjusted nonfarm data (January 2006 to December 2008) and seasonal adjustment revisions (January 2004 to December 2008). Because revisions can affect various multi-year periods of original and seasonally adjusted data, it would be incorrect to generate a historic time series for *Economic Indicators* data by tying together series from old issues. For example, seasonally adjusted data from January 2005 to December 2009 are subject to change during the next annual revision cycle.

General Notes

Annual Averages. On p. S-20 are the annual averages of the of the data series for recent years to be used as a benchmark for evaluating current monthly data.

Charts. Unless otherwise noted, all graphs were developed with seasonally adjusted data.

Moving Averages. Series where the monthly data vary erratically have been plotted with moving averages (thick line) and nonaveraged data (thin line) superimposed.

Scales. The scale of each series is determined by the volume and trend of the data series. Caution should be exercised in making comparisons among charts of different scales.

Shaded Columns. Shaded areas indicate periods of general national contraction as identified by the National Bureau of Economic Research (NBER). The July 1990-March 1991 and the March 2001-November 2001 national recessions are shown in the graphs for Series 1-27.

Tables. Revised data are indicated by an “R” after the entry.

Statistical Section Notes (cont.)

Data Sources for Economic Time Series 1-27

No.	Title	Data Source
1	Civilian Labor Force	NJ Department of Labor and Workforce Development, Division of Labor Market and Demographic Research
2	Resident Employment	
3	Unemployment	
4	Labor Force Participation Rate	
5	Employment/Population Ratio	
6	Unemployment Rate	
7	Nonfarm Payroll Employment	
8	Private Sector Nonfarm Payroll Employment	
9	Construction Payroll Employment	
10	Manufacturing Payroll Employment	
11	Trade, Transportation and Utilities Payroll Employment	
12	Information Payroll Employment	
13	Financial Activities Payroll Employment	
14	Professional and Business Services Payroll Employment	
15	Education and Health Services Payroll Employment	
16	Leisure and Hospitality Payroll Employment	
17	CPI for All Urban Consumers (CPI-U)	US Bureau of Labor Statistics
18	Consumer Confidence Index for the United States	The Conference Board
19	Total Private Dwelling Units Auth. by Bldg. Permits	US Bureau of the Census, Manufacturing and Construction Division
20	Priv. Single-Fam. Dwelling Units Auth. by Bldg. Permits	
21	Priv. Multi-Fam. Dwelling Units Auth. by Bldg. Permits	
22	Total New Vehicle Registrations	R.L. Polk and Company
23	New Passenger Car Registrations	
24	New Light Truck/Van Registrations	
25	Weeks Claimed and Insured Unemployment Rate	NJ Department of Labor and Workforce Development, Division of Program Planning, Analysis and Evaluation
26	Initial Claims - Weekly Averages	
27	Unemployment Insurance Exhaustions	

Data Sources for Economic Time Series 1-27

1-6 **Resident Labor Force Indicators** are produced using a modeling procedure based on regression techniques, that allows for the construction of error ranges. This procedure includes data variables from the NJ Department of Labor & Workforce Development's monthly Current Employment Statistics (CES) survey, unemployment insurance claims data and responses from the US Bureau of Labor Statistics' Current Population Survey (CPS) of 1,500 households in New Jersey. A new method was introduced effective with January 2005 estimates. Data are available monthly back to 1976.

Beginning with 1990, data incorporate 2000 census-based population controls as well as improved estimates of immigration, emigration, births and deaths for the state and are not directly comparable to earlier figures.

The **Labor Force Participation Rate** and the **Employment/Population Ratio** (Series 4 and 5) are expressed as percentages of the civilian noninstitutional population aged 16 years and over.

7-16 The **Establishment Employment Indicators** are generated from the monthly CES survey of employers on the number of persons who worked or received pay for any part of the pay period including the 12th of the month.

Data reflect March 2008 benchmarks.

Statistical Section Notes (cont.)

Seasonally adjusted data for Series 7-16 have been revised back to January 2004.
Not seasonally adjusted data have been revised back to 2006.

Private Sector Nonfarm Payroll Employment (Series 8) is computed by subtracting government employment from total nonfarm employment.

Standard errors have been computed to estimate the variance of total private sector employment and for all supersector series statewide, as well as for total private sector employment for Metropolitan Statistical Areas. More detailed information is available at lwd.dol.state.nj.us/labor/lpa under "Employment & Wages". Please see the technical note on sample variance.

- 17 The **Consumer Price Index for All Urban Consumers (CPI-U)** is a measure of the average change over time in the prices paid by all urban consumers (excluding military personnel and persons in institutions) for a fixed market basket of consumer goods and services. The month-to-month change in the CPI is a measure of inflation. Beginning with January 2007, monthly data is reported out to three decimal points.

The **CPI-U** represents approximately 87% of the total population. The **US CPI-U** is the US City Average. The **US CPI-U** and **Metro Area CPI-U** (see definitions below) are not seasonally adjusted.

The CPI does not measure the relative cost of living between areas. There is no "New Jersey CPI". The division of New Jersey's 21 counties between two metropolitan areas for which CPIs are calculated is defined below.

Internet: US Bureau of Labor Statistics Web site may be accessed at <http://www.bls.gov/data/top20.htm> for all regional and national CPI data.

Metro Area definitions:

"NY" designates the *New York-Northern New Jersey - Long Island, NY-NJ-CT-PA area*. In New Jersey this includes Bergen, Essex, Hudson, Hunterdon, Mercer, Middlesex, Monmouth, Morris, Ocean, Passaic, Somerset, Sussex, Union and Warren counties. In New York, it includes New York City (5 counties), Dutchess, Nassau, Orange, Putnam, Rockland, Suffolk and Westchester counties. In Connecticut, it includes Fairfield and New Haven counties, plus parts of Litchfield and Middlesex counties. In Pennsylvania, it includes Pike County. Data are published monthly.

"PA" designates the *Philadelphia-Wilmington-Atlantic City, PA-NJ-DE-MD area*. In New Jersey this includes Atlantic, Burlington, Camden, Cape may, Cumberland, Gloucester, and Salem Counties. In Pennsylvania, it includes Bucks, Chester, Delaware, Montgomery and Philadelphia counties. In Delaware, it includes New Castle County, and in Maryland, Cecil County. Data are published bi-monthly.

- 18 **Consumer Confidence Index (CCI), (US 1985=100)** is based on a representative, random sample of 5,000 US households surveyed monthly by TNS for the Conference Board. The index represents consumers' perceptions of the present general economy, their own financial conditions as well as their short-term (six months) outlook. Economists use the CCI as a leading indicator for consumer spending.

Statistical Section Notes (cont.)

19-21 The **Residential Building Permits Indicators** are compiled by the US Bureau of the Census, Manufacturing and Construction Division as of the thirteenth workday of the following month. Data are collected for all permit-issuing places in the state through a monthly survey of local construction officials. If data are not received for a particular place for that month, the data are imputed. The Census Bureau conducts an annual follow-up to obtain as much data as possible for places for which the data were imputed during the year; these data are then considered to be **FINAL MONTHLY FIGURES**. (Final statewide totals used to produce the annual averages on p. S-20 also include “undistributed” units.) Data beginning January 1998 contain revisions allocated back to prior months and are directly comparable to over-the-year changes shown on the **New Jersey’s Economy by the Numbers** table.

Total Private Dwelling Units Authorized by Building Permits (Series 19) data are the sum of single-family, two-family, three-or-four-family, and five-or-more-family dwelling units. Public housing units are not included in the series and represent a tiny fraction of the total.

Private Multi-Family (5+ units) Authorized by Building Permits (Series 21) include all multi-family structures with five or more units, except those in public housing. Data do not exhibit a stable seasonal pattern and are, therefore, not appropriate for seasonal adjustment.

22-24 These series on **New Passenger Car & New Light Truck/Van Registrations** present data only on total new passenger cars and total light truck/vans (in the gross vehicle weight class 0-10,000 lbs.) registered in New Jersey, regardless of the state in which the sales occur. Included are both domestically produced and imported vehicles. Excluded are all federal government registrations. Monthly data for current and prior-year are subject to revision.

Because of unemployment insurance (UI) coverage and other law changes affecting eligibility for benefits, data on unemployment insurance claims (Series 25-27) may not be directly comparable between years.

25 **Weeks Claimed (Weekly Average)** is computed by dividing the total number of weeks claimed (intra-state and interstate agent under the Regular State UI Program only) in the month by the number of weeks in the month.

The **Insured Unemployment Rate (IUR)** is the seasonally adjusted weekly average of weeks claimed (intrastate and interstate agent claims under the Regular State UI Program only), which is a proxy for a count of claimants, as a percent of employment covered by unemployment insurance.

26 The **Initial Claims Weekly Average** represents intrastate and interstate agent claims under the Regular State UI program only.

27 **Unemployment Insurance Exhaustions** are for the Regular State UI Program only.