

June 2023 Traffic Report

AVIATION DEPARTMENT (Data As Of 7/26/2023 8:44:26 AM)

REGION



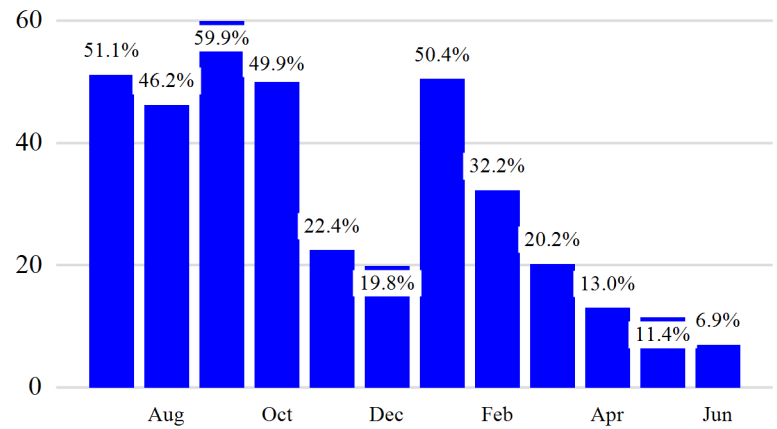
Revenue Passengers

	Curr Month	% Change
	12,530,897	6.9% ▲
Domestic	7,995,724	2.1%
International	4,535,173	16.7%
Non-Revenue	319,049	9.3%

Load Factors	Curr Month
Domestic	83.3%
International	85.0%

83.9% Avg Load Factor

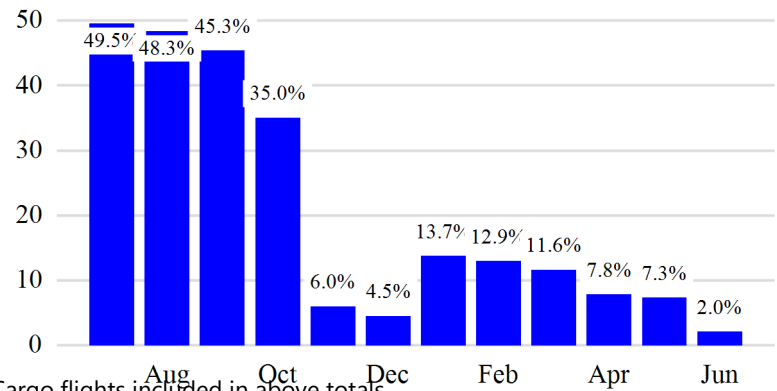
Year over Year % Change in Revenue Passengers - 12 Months



Total Flights

	Curr Month	% Change
	107,223	3.6% ▲
Excl GA	99,737	2.0% ▲
Domestic	72,931	-1.8%
International	26,806	14.0%
Gen Aviation	7,486	31.1%
Cargo Flights*	3,231	-6.7%

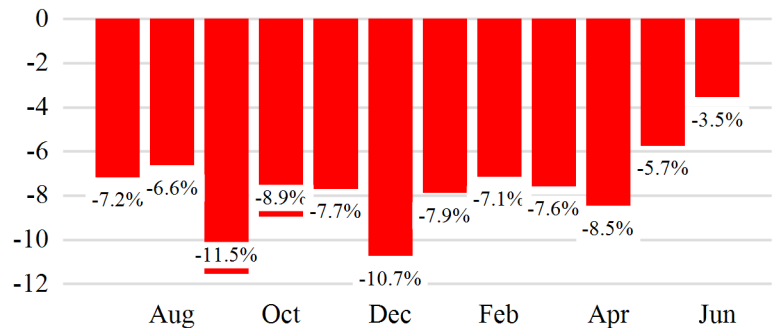
Year over Year % Change in Total Flights (Excl GA) - 12 Months



Cargo (Short Tons)

	Curr Month	% Change
	187,399	-3.5% ▼
Domestic	82,565	-2.5%
International	104,834	-4.3%
Mail	11,114	-9.2%

Year over Year % Change in Cargo - 12 Months



Top 5 Declines in Revenue Passengers by Airline

Airline	Pax Decline	% Decline
AMERICAN	(79,169)	-5.0%
JETBLUE AIRWAYS	(14,531)	-1.0%
FINNAIR	(12,129)	-48.0%
QATAR AIRWAYS	(11,373)	-29.0%
ALASKA AIRLINES	(10,703)	-5.0%

Top 5 Increases in Revenue Passengers by Airline

Airline	Pax Increase	% Increase
DELTA	291,103	11.0%
United	166,412	6.0%
AIR CANADA	57,025	54.0%
NORSE ATLANTIC	35,004	1016.0%
CATHAY PACIFIC	33,624	426.0%

Airport Summary Statistics

JFK Summary

	Current Month	YoY %
Total Revenue Pax	5,559,868	8.0
Total Flights Including GA	40,315	5.0
Total Cargo (Short Tons)	128,323	-0.6

EWR Summary

	Current Month	YoY %
Total Revenue Pax	4,175,778	7.0
Total Flights Including GA	34,280	0.0
Total Cargo (Short Tons)	56,476	-9.9

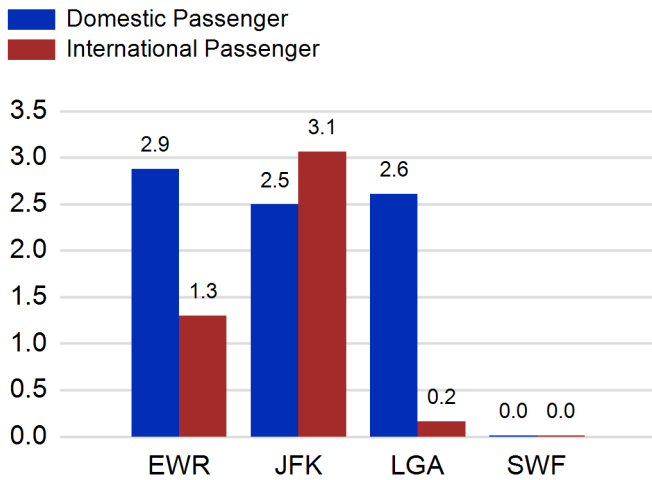
LGA Summary

	Current Month	YoY %
Total Revenue Pax	2,773,537	4.0
Total Flights Including GA	28,681	0.0
Total Cargo (Short Tons)	500	-13.8

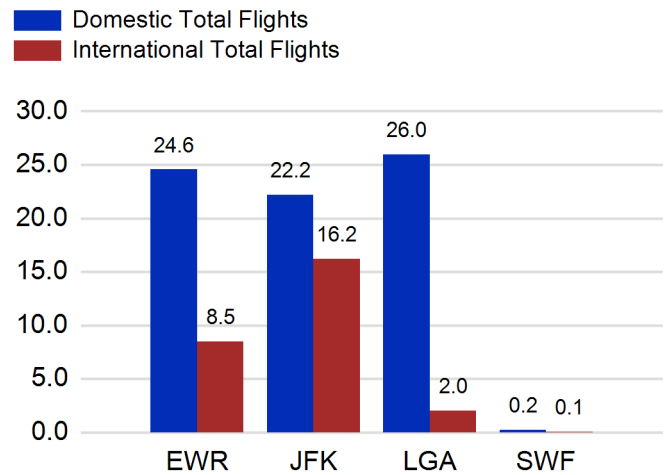
SWF Summary

	Current Month	YoY %
Total Revenue Pax	21,714	-35.0
Total Flights Including GA	3,947	61.0
Total Cargo (Short Tons)	2,100	9.6

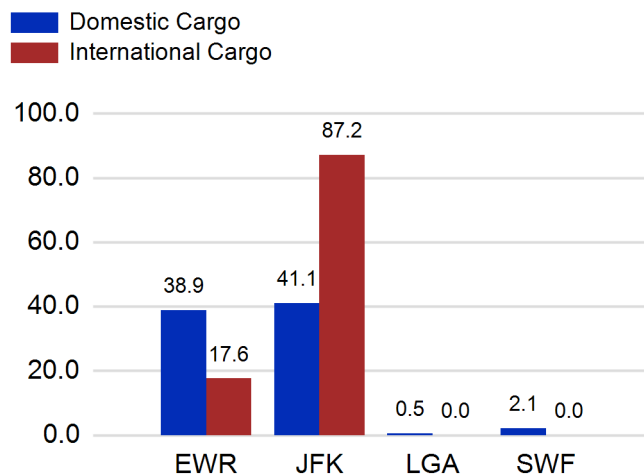
Total Passengers by Airport (Millions)



Total Flights by Airport (Thousands)



Total Cargo by Airport (Thousands of Short Tons)



12 Months Ending Passenger & Freight Statistics

Top 20 Airlines Ranking by Passengers & Freight: 12 Months Ending Jun 2023

Airline Name	Domestic	International	Total Pax	% of Tot	Airline Name	Short Tons	% of Tot
United	26,433,793	7,705,031	34,138,824	24.47%	FEDERAL EXPRESS	379,466	16.94%
DELTA	25,759,152	5,896,072	31,655,224	22.69%	UNITED PARCEL	197,840	8.83%
JETBLUE AIRWAYS	16,414,031	6,305,666	22,719,697	16.29%	UNITED	183,242	8.18%
AMERICAN	14,288,780	3,626,232	17,915,012	12.84%	DELTA	97,595	4.36%
SPIRIT AIRLINES	4,429,795	0	4,429,795	3.18%	AMERICAN	88,827	3.96%
SOUTHWEST AIRLINES	3,096,141	0	3,096,141	2.22%	KALITTA AIR LLC	82,775	3.69%
ALASKA AIRLINES	2,417,467	0	2,417,467	1.73%	AIR TRANSPORT INT'L.(BAX Inc.)	66,285	2.96%
Air Canada	0	1,552,329	1,552,329	1.11%	ATLAS AIR	63,001	2.81%
BRITISH AIRWAYS	0	1,498,026	1,498,026	1.07%	ABX AIR INC	60,604	2.70%
AIR FRANCE	313	1,197,519	1,197,832	0.86%	KOREAN	51,206	2.29%
EMIRATES AIRLINES	0	1,076,601	1,076,601	0.77%	CARGOLUX AIRLINES	49,609	2.21%
VIRGIN ATLANTIC	0	920,720	920,720	0.66%	BRITISH AIRWAYS	48,519	2.17%
LUFTHANSA CARGO	0	815,685	815,685	0.58%	CHINA AIRLINES (CAL)	45,290	2.02%
TURKISH AIR	0	730,924	730,924	0.52%	CATHAY PACIFIC	44,880	2.00%
AER LINGUS	0	730,890	730,890	0.52%	VIRGIN ATLANTIC	36,292	1.62%
Avianca Costa Rica	0	725,038	725,038	0.52%	LUFTHANSA CARGO	33,268	1.48%
EL AL	0	575,102	575,102	0.41%	TURKISH AIR	32,366	1.44%
LAN AIRLINES	0	531,246	531,246	0.38%	EVA	31,781	1.42%
IBERIA	0	513,665	513,665	0.37%	AIR FRANCE	31,072	1.39%
SWISS INT'L AIR LINES LTD	0	496,436	496,436	0.36%	ASIANA	28,293	1.26%

Passengers & Freight by Market - 12 Months Ending

Market	Passengers	Freight (Short Tons)
TRANSATLANTIC	25,057,527	855,915
CANADA	3,801,916	5,722
CARIBBEAN + BERMUDA	8,044,017	12,471
CENTRAL AND SOUTH AMERICA	4,065,924	58,861
DOMESTIC	91,519,990	947,093
MEXICO	2,424,753	13,356
TRANSPACIFIC	2,178,181	338,976
PUERTO RICO	2,410,222	8,236

Additional Data

Airline Schedules (ADI): Non-Stop Destinations

	Region	Flights (Daily)	Cities
Domestic	Domestic	2449.0	112
	Puerto Rico	40.6	3
	Total	2,489.6	115.00
International	Canada	191.1	8
	Caribbean & Bermuda	161.8	23
	Central & South America	72.7	18
	Mexico	43.5	6
	Transatlantic	394.4	66
	Transpacific	34.5	11
	Total	898.0	132.00
Total	3,387.7	247.00	

Airline Schedules (ADI): Carriers & Aircraft Type

	Aircraft Type	Flights (Daily)	Carriers
Domestic	Commuter	920.9	4
	Narrow Body	1508.3	10
	Wide Body	60.4	4
	Total	2,489.6	18.00
International	Commuter	164.8	5
	Narrow Body	334.0	22
	Wide Body	399.2	59
	Total	898.0	86.00
Total	Total	3,387.7	104.00

Passenger Demographics (ACI ASQ Surveys - 2021)

Connect		Trip Type		Gender	
Local Origin/Destination	78.6%	Business	14.0%	M	49.6%
Connecting	21.4%	Leisure	86.0%	F	50.4%
Transport Mode		Annual Flights		Residency	
Bus/Shuttle	4.7%	1-2	61.5%	United States	81.0%
Other	18.7%	3-5	24.9%	Other	19.0%
Private/Company Car	37.5%	6-10	9.0%		
Rail/Subway	7.3%	11-20	2.8%		
Rental Car	4.6%	21+	1.8%		
Taxi/Limo	27.2%				

Ground Transportation

	Curr Month	% Change		Curr Month	% Change
<i>Paid Parked Cars</i>	380,044	-14.6	<i>Total Air Train Passengers</i>	2,800,944	8.3
<i>GTC Bookings</i>	0		<i>Paid Howard Beach Passengers</i>	147,413	18.6
<i>Airport Coach Passengers</i>	29,065	-0.3	<i>Paid Jamaica Passengers</i>	507,088	6.5
<i>Taxis Dispatched</i>	379,020	0.9	<i>Paid EWR Passengers</i>	242,828	27.7
			<i>On-Airport (Unpaid) Passengers</i>	1,903,615	6.0

Airlines for American Carriers (USA)

	Curr Month	% Change
<i>Freight:revenue ton miles (000)</i>	0	

Regional Airports: Other

	Curr Month	% Change
<i>TEB flight movements</i>	15,151	0.3
<i>ISP Total passengers*</i>	0	-100.0
<i>HPN Total passengers</i>	192,057	22.8