



State of New Jersey

03-3730-050

NATHAN HALE

441 TAPPAN ROAD

NORTHVALE, NJ 07647

OVERVIEW

BERGEN

NORTHVALE BORO

GRADE SPAN 04-08

This school's academic performance is **high when compared** to schools across the state. Additionally, its academic performance **significantly lags in comparison** to its peers. This school's college and career readiness is **high when compared** to schools across the state. Additionally, its college and career readiness is **about average when compared** to its peers. This school's student growth performance is **very high when compared** to schools across the state. Additionally, its student growth performance is **high when compared** to its peers.

Performance Areas	Peer Rank (Percentile)	Statewide Rank (Percentile)	Percent of Targets Met
Academic Achievement	5	67	100%
College and Career Readiness	50	72	50%
Student Growth	69	90	100%

Improvement Status

N/A

Rationale

N/A

Very High Performance is defined as being equal to or above the 80.0th percentile.

High Performance is defined as being between the 60.0th and 79.9th percentiles.

Average Performance is defined as being between the 40.0th and 59.9th percentiles.

Lagging Performance is defined as being between the 20.0th and 39.9th percentiles.

Significantly Lagging Performance is defined as being equal to or below the 19.9th percentile.

Peer Schools are schools that have similar grade levels and students with similar demographic characteristics, such as the percentage of students qualifying for Free/Reduced Lunch, Limited English Proficiency programs or Special Education programs.

Academic Achievement

This school outperforms 67% of schools statewide as noted by its statewide percentile ranking and 5% of schools educating students with similar demographic characteristics as noted in its peer school percentile ranking in the performance area of Academic Achievement. Additionally, this school is meeting 100% of its performance targets in the area of Academic Achievement.



Academic Achievement measures the content knowledge students have in language arts literacy and math. For elementary and middle schools, this includes measures of the school's proficiency rate on both the Language Arts Literacy and Math sections of the New Jersey Assessment of Skills and Knowledge (NJ ASK). A proficiency rate is calculated by summing the count of students who scored either proficient or advanced proficient on the assessment and dividing by the count of valid test scores.

College and Career Readiness

This school outperforms 72% of schools statewide as noted by its statewide percentile ranking and 50% of schools educating students with similar demographic characteristics as noted in its peer school percentile ranking in the performance area of College and Career Readiness. Additionally, this school is meeting 50% of its performance targets in the area of College and Career Readiness.



College and Career readiness measures the degree to which students are demonstrating behaviors that are indicative of future attendance and/or success in college and careers. For all elementary and middle schools, this includes a measurement of how many students are chronically absent. For schools with middle school grades, it also includes a measurement of how many students take Algebra I in either seventh or eighth grade.

Student Growth

This school outperforms 90% of schools statewide as noted by its statewide percentile ranking and 69% of schools educating students with similar demographic characteristics as noted in its peer school percentile ranking in the performance area of Student Growth. Additionally, this school is meeting 100% percentage of its performance targets in the area of Student Growth.



Student Growth measures the performance of students from one year to the next on the New Jersey Assessment of Skills and Knowledge (NJ ASK) in Language Arts Literacy and Math when compared to students with a similar history of performance on NJ-ASK.



DEMOGRAPHIC INFORMATION

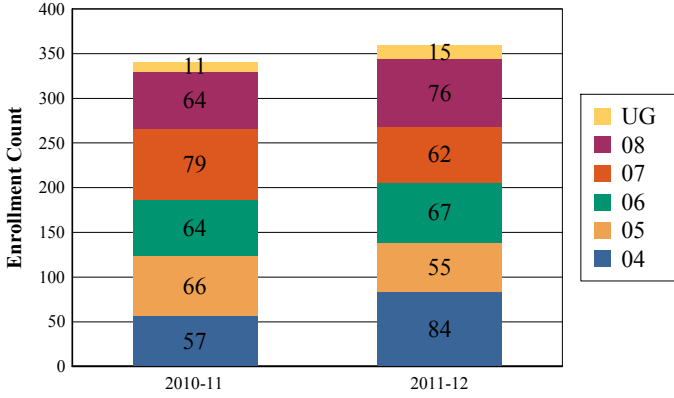
BERGEN

NORTHVALE BORO

GRADE SPAN 04-08

Enrollment by Grade

This graph presents the count of students who were 'on roll' by grade in October of each school year.

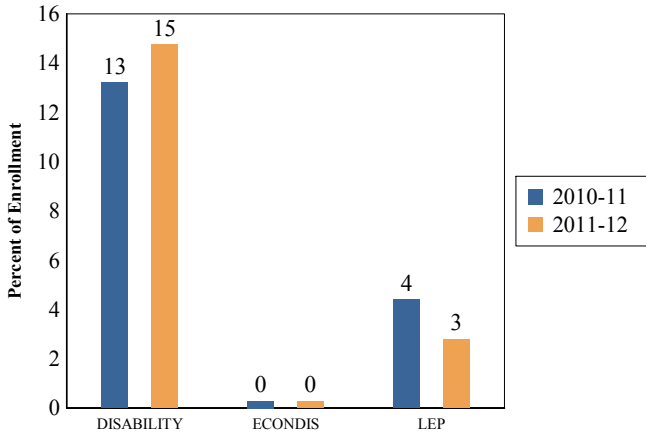


Total School Enrollment Trends

Note: "UG" represents the count of students who are 'on roll' in this school but who are educated in ungraded classrooms, meaning that the classrooms may contain students from multiple grade levels.

Total School Enrollment	
2010-11	341
2011-12	359

Enrollment Trends by Program Participation



Current Year Enrollment by Program Participation

2011-2012	Count of Students	% of Enrollment
Students with Disability	53	15%
Economically Disadvantaged Students	1	0.3%
Limited English Proficient Students	10	2.8%

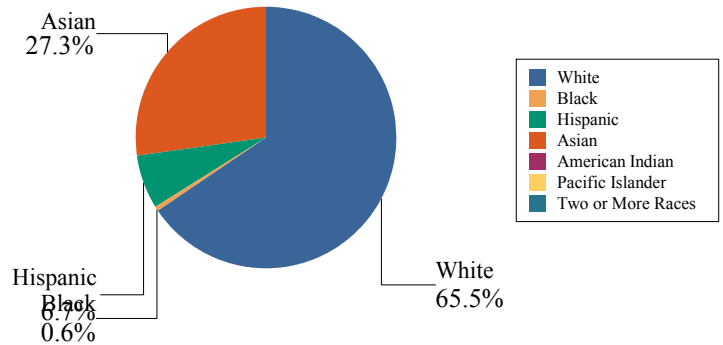
Language Diversity

This table presents the percentage of students who primarily speak each language in their home.

2011-12	Percent
English	59.8%
Korean	19.8%
Portuguese	6.5%
Tagalog	2.6%
Armenian	2.0%
Gujarati	1.7%
Other	7.7%

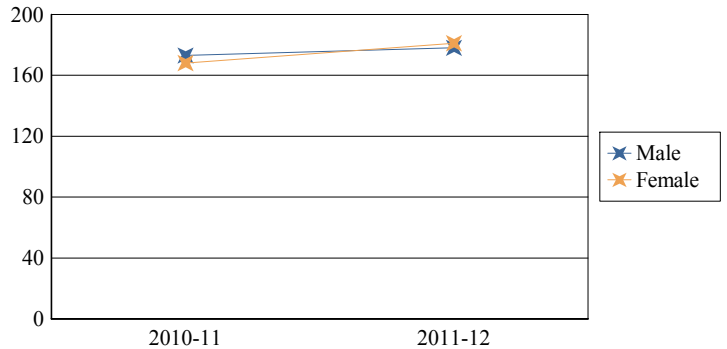
Enrollment by Ethnic/Racial Subgroup

This graph presents the percentages of enrollment for each subgroup defined by the No Child Left Behind Act of 2001



Enrollment by Gender

This graph presents the count of students by gender who were 'on roll' in October of each school year.



	Male	Female
2010-11	173	168
2011-12	178	181



State of New Jersey

03-3730-050

NATHAN HALE

441 TAPPAN ROAD

NORTHVALE, NJ 07647

ACADEMIC ACHIEVEMENT

BERGEN

NORTHVALE BORO

GRADE SPAN 04-08

Academic Achievement measures the content knowledge students have in language arts literacy and math. In elementary and middle school, this includes the outcomes of the New Jersey Assessment of Skills and Knowledge (NJASK). The first column - Schoolwide Performance - in the table below includes measures of the total schoolwide proficiency rate in both language arts literacy and math across multiple administrations of the assessment. The second column - Peer School Percentile Rank - indicates where the school's proficiency rate compares to its group of peer schools. For example, a school that has a peer school percentile rank of 65 has a proficiency rate that is higher than 65% of its peer schools. The third column - Statewide Percentile Rank - indicates where the school's proficiency rate compares to schools across the state. For example, a school that has a statewide percentile rank of 30 has a proficiency rate that is higher than 30% of all schools with HSPA scores statewide. The last column - Percent of Targets Met - presents the percentage of progress targets met as defined by the NJDOE's NCLB waiver.

The Summary row presents the averages of the peer school percentile ranks, the average of statewide percentile ranks and the percentage of statewide targets met.

Academic Achievement Indicators	Schoolwide Performance	Peer Rank (Percentile)	State Rank (Percentile)	Percent of Targets Met
NJASK Language Arts Proficiency and above	78%	7	70	100%
NJASK Math Proficiency and above	80%	3	64	100%
SUMMARY - Academic Achievement		5	67	100%

NCLB Progress Targets - Language Arts Literacy

This table presents the Progress Targets as uniquely calculated for each subgroup in each school under NJDOE's NCLB waiver. The methodology - as defined by the United States Department of Education - is calculated so that each subgroup will halve the gap between their 2011 proficiency rate and 100% proficiency by 2017.

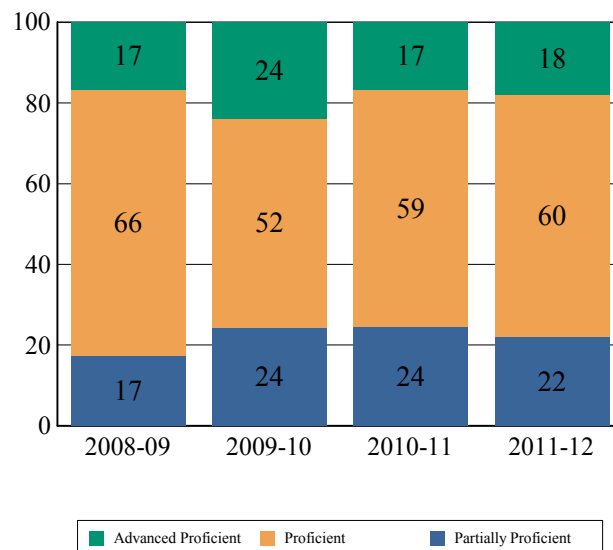
Subgroups	Total Valid Scores	Pass Rate	Target	Met Target?
Schoolwide	337	78	77.7	YES
White	228	78.1	75	YES
Black	-	-	-	--
Hispanic	-	-	-	--
American Indian	-	-	-	--
Asian	85	84.7	88.2	YES*
Two or More Races	-	-	-	--
Students with Disability	48	20.9	21.5	YES*
Limited English Proficient Students	-	-	-	--
Economically Disadvantaged Students	-	-	-	--

YES* = Met Progress Target(Confidence Interval Applied)

Data is presented for subgroups when the count is high enough under NCLB suppression rules.

Proficiency Trends - Language Arts Literacy

This graph presents the percentage of students who scored in the Advanced Proficient, Proficient and Partially Proficient categories of the statewide Language Arts Literacy assessment over the prior four years.





ACADEMIC ACHIEVEMENT

BERGEN

NORTHVALE BORO

GRADE SPAN 04-08

03-3730-050
NATHAN HALE
441 TAPPAN ROAD
NORTHVALE, NJ 07647

NCLB Progress Targets - Math

This table presents the Progress Targets as uniquely calculated for each subgroup in each school under NJDOE's NCLB waiver. The methodology - as defined by the United States Department of Education - is calculated so that each subgroup will halve the gap between their 2011 proficiency rate and 100% proficiency by 2017.

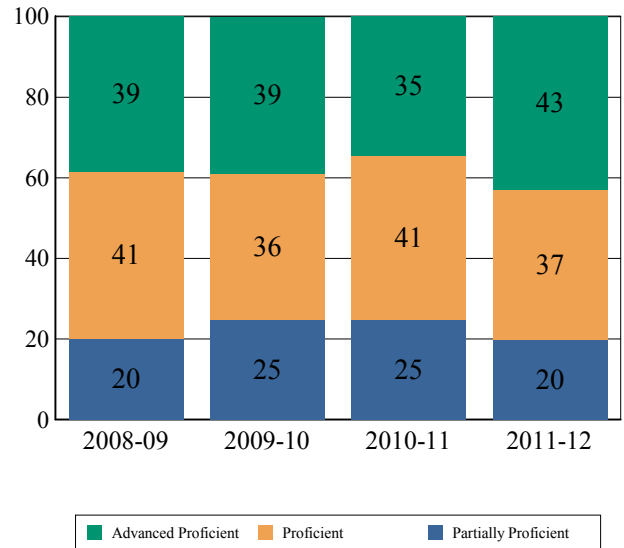
Subgroups	Total Valid Scores	Pass Rate	Target	Met Target?
Schoolwide	337	80.1	77.4	YES
White	228	75.4	73.3	YES
Black	-	-		--
Hispanic	-	-		--
American Indian	-	-		--
Asian	85	96.5	90	YES
Two or More Races	-	-		--
Students with Disability	48	16.7	21.5	YES*
Limited English Proficient Students	-	-		--
Economically Disadvantaged Students	-	-		--

YES* = Met Progress Target(Confidence Interval Applied)

Data is presented for subgroups when the count is high enough under NCLB suppression rules.

Proficiency Trends - Math

This graph presents the percentage of students who scored in the Advanced Proficient, Proficient and Partially Proficient categories of the statewide Math assessment over the prior four years.





State of New Jersey

03-3730-050

NATHAN HALE

441 TAPPAN ROAD

NORTHVALE, NJ 07647

ACADEMIC ACHIEVEMENT

BERGEN

NORTHVALE BORO

GRADE SPAN 04-08

NJASK Results - Language Arts Literacy Grade Level - 04

This table presents the grade level proficiency results, as measured by NJASK, in Advanced Proficient, Proficient, and Partially Proficient categories for all appropriate subgroups.

Subgroups	Advanced Proficient	Proficient	Partially Proficient
Schoolwide	6%	68%	25%
White	6%	69%	25%
Black	N/A	N/A	N/A
Hispanic	-	-	-
American Indian	N/A	N/A	N/A
Asian	8%	67%	25%
Two or More Races	N/A	N/A	N/A
Students w/ Disability	-	-	-
Limited English Proficient Students	-	-	-
Economically Disadvantaged Students	N/A	N/A	N/A

Data is presented for subgroups when the count is high enough under NCLB suppression rules.

NJASK Results - Language Arts Literacy Grade Level - 05

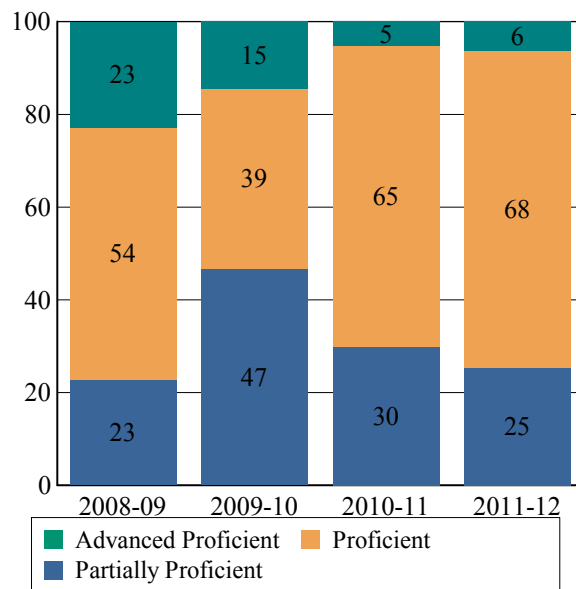
This table presents the grade level proficiency results, as measured by NJASK, in Advanced Proficient, Proficient, and Partially Proficient categories for all appropriate subgroups.

Subgroups	Advanced Proficient	Proficient	Partially Proficient
Schoolwide	18%	56%	25%
White	9%	66%	25%
Black	N/A	N/A	N/A
Hispanic	-	-	-
American Indian	N/A	N/A	N/A
Asian	35%	47%	18%
Two or More Races	N/A	N/A	N/A
Students w/ Disability	-	-	-
Limited English Proficient Students	N/A	N/A	N/A
Economically Disadvantaged Students	N/A	N/A	N/A

Data is presented for subgroups when the count is high enough under NCLB suppression rules.

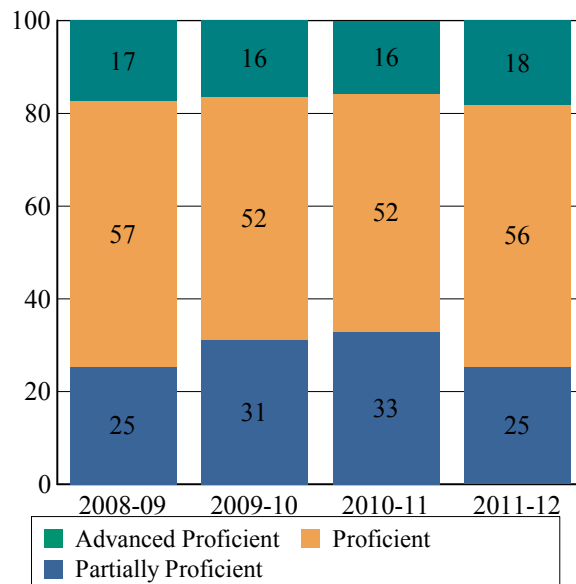
NJASK Proficiency Trends - Language Arts Literacy - Grade Level - 04

This graph presents the grade level outcomes in the categories of Advanced Proficient, Proficient, and Partially Proficient over the last four years.



NJASK Proficiency Trends - Language Arts Literacy - Grade Level - 05

This graph presents the grade level outcomes in the categories of Advanced Proficient, Proficient, and Partially Proficient over the last four years.





ACADEMIC ACHIEVEMENT

BERGEN

NORTHVALE BORO

GRADE SPAN 04-08

03-3730-050

NATHAN HALE

441 TAPPAN ROAD

NORTHVALE, NJ 07647

NJASK Results - Language Arts Literacy Grade Level - 06

This table presents the grade level proficiency results, as measured by NJASK, in Advanced Proficient, Proficient, and Partially Proficient categories for all appropriate subgroups.

Subgroups	Advanced Proficient	Proficient	Partially Proficient
Schoolwide	14%	59%	27%
White	12%	62%	26%
Black	-	-	-
Hispanic	-	-	-
American Indian	N/A	N/A	N/A
Asian	25%	63%	13%
Two or More Races	N/A	N/A	N/A
Students w/ Disability	0%	27%	73%
Limited English Proficient Students	-	-	-
Economically Disadvantaged Students	N/A	N/A	N/A

Data is presented for subgroups when the count is high enough under NCLB suppression rules.

NJASK Results - Language Arts Literacy Grade Level - 07

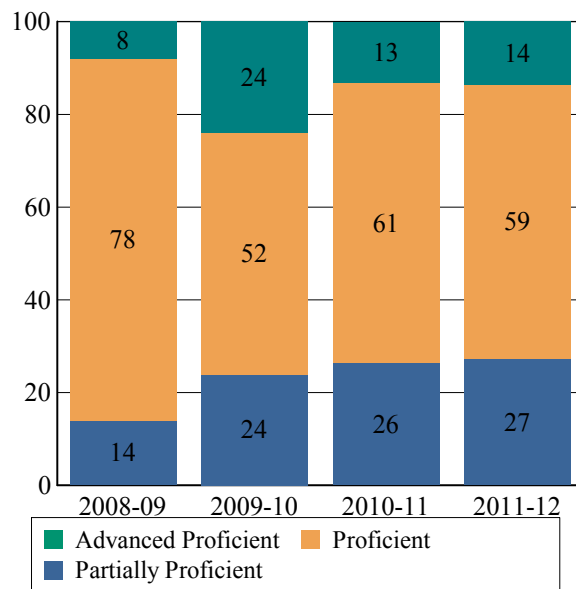
This table presents the grade level proficiency results, as measured by NJASK, in Advanced Proficient, Proficient, and Partially Proficient categories for all appropriate subgroups.

Subgroups	Advanced Proficient	Proficient	Partially Proficient
Schoolwide	20%	57%	23%
White	15%	61%	24%
Black	-	-	-
Hispanic	-	-	-
American Indian	N/A	N/A	N/A
Asian	45%	36%	18%
Two or More Races	N/A	N/A	N/A
Students w/ Disability	-	-	-
Limited English Proficient Students	-	-	-
Economically Disadvantaged Students	-	-	-

Data is presented for subgroups when the count is high enough under NCLB suppression rules.

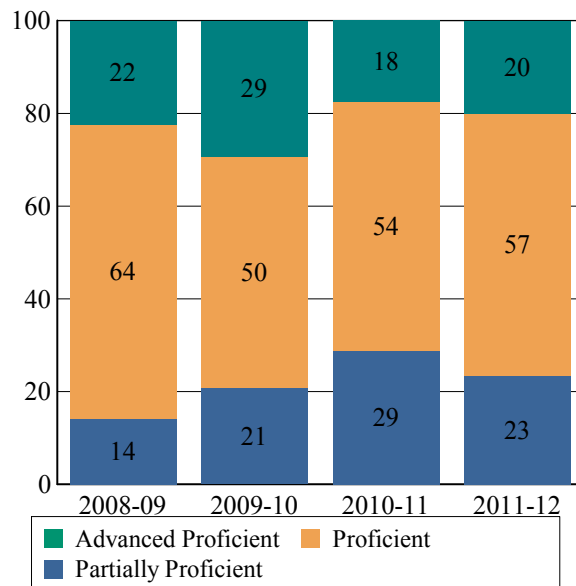
NJASK Proficiency Trends - Language Arts Literacy - Grade Level - 06

This graph presents the grade level outcomes in the categories of Advanced Proficient, Proficient, and Partially Proficient over the last four years.



NJASK Proficiency Trends - Language Arts Literacy - Grade Level - 07

This graph presents the grade level outcomes in the categories of Advanced Proficient, Proficient, and Partially Proficient over the last four years.





State of New Jersey

03-3730-050

NATHAN HALE

441 TAPPAN ROAD

NORTHVALE, NJ 07647

ACADEMIC ACHIEVEMENT

BERGEN

NORTHVALE BORO

GRADE SPAN 04-08

NJASK Results - Language Arts Literacy Grade Level - 08

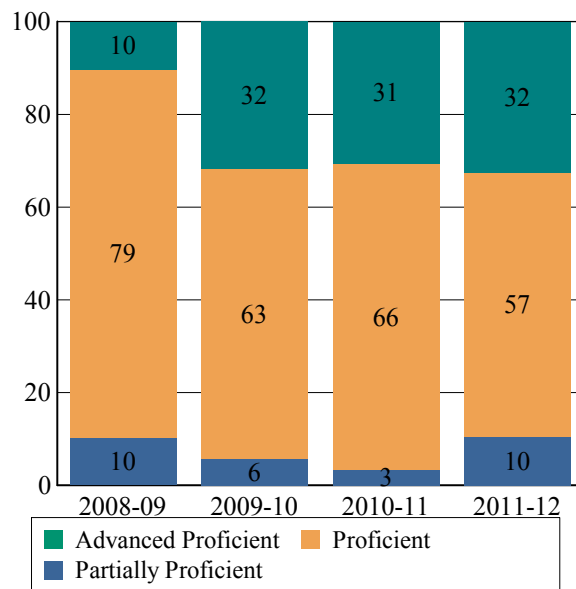
This table presents the grade level proficiency results, as measured by NJASK, in Advanced Proficient, Proficient, and Partially Proficient categories for all appropriate subgroups.

Subgroups	Advanced Proficient	Proficient	Partially Proficient
Schoolwide	32%	57%	10%
White	28%	60%	12%
Black	N/A	N/A	N/A
Hispanic	-	-	-
American Indian	N/A	N/A	N/A
Asian	47%	53%	0%
Two or More Races	N/A	N/A	N/A
Students w/ Disability	9%	27%	64%
Limited English Proficient Students	-	-	-
Economically Disadvantaged Students	N/A	N/A	N/A

Data is presented for subgroups when the count is high enough under NCLB suppression rules.

NJASK Proficiency Trends - Language Arts Literacy - Grade Level - 08

This graph presents the grade level outcomes in the categories of Advanced Proficient, Proficient, and Partially Proficient over the last four years.



2011 National Assessment Educational Progress (NAEP)

The National Assessment of Educational Progress (NAEP) is the largest national assessment of what our nation's students know and can do. NAEP assesses fourth-, eighth-, and twelfth-grade students in subjects such as reading, mathematics, science, and writing. The reporting of NAEP scores on state report cards is a federal mandate. The results of NAEP are also published as the Nation's Report Card, and are available for the nation, states, and, in some cases, urban districts. The NAEP scores on the report card include grades four and eight 2011 reading and math scores for New Jersey which are the last scores published. For subgroup outcomes, visit :

<http://www.nj.gov/education/pr/2013/naep/naep4read.html>

For more information, visit <http://nces.ed.gov/nationsreportcard/>

Proficiency Percentages

Grade 4 Reading	State/Nation	Below Basic	Basic	Proficient	Advanced
All Students	State (NJ)	21.9	34.2	32.5	11.4
All Students	Nation	33.8	33.8	24.9	7.5

2011 National Assessment Educational Progress (NAEP)

The National Assessment of Educational Progress (NAEP) is the largest national assessment of what our nation's students know and can do. NAEP assesses fourth-, eighth-, and twelfth-grade students in subjects such as reading, mathematics, science, and writing. The reporting of NAEP scores on state report cards is a federal mandate. The results of NAEP are also published as the Nation's Report Card, and are available for the nation, states, and, in some cases, urban districts. The NAEP scores on the report card include grades four and eight 2011 reading and math scores for New Jersey which are the last scores published. For subgroup outcomes, visit :

<http://www.nj.gov/education/pr/2013/naep/naep8read.html>

For more information, visit <http://nces.ed.gov/nationsreportcard/>

Proficiency Percentages

Grade 8 Reading	State/Nation	Below Basic	Basic	Proficient	Advanced
All Students	State (NJ)	15.8	39.5	38.6	6.2
All Students	Nation	25.3	43.0	28.6	3.0



ACADEMIC ACHIEVEMENT

BERGEN

NORTHVALE BORO

GRADE SPAN 04-08

03-3730-050
NATHAN HALE
441 TAPPAN ROAD
NORTHVALE, NJ 07647

NJASK Results - Math Grade Level - 04

This table presents the grade level proficiency results, as measured by NJASK, in Advanced Proficient, Proficient, and Partially Proficient categories for all appropriate subgroups.

Subgroups	Advanced Proficient	Proficient	Partially Proficient
Schoolwide	41%	47%	13%
White	35%	49%	16%
Black	N/A	N/A	N/A
Hispanic	-	-	-
American Indian	N/A	N/A	N/A
Asian	50%	42%	8%
Two or More Races	N/A	N/A	N/A
Students w/ Disability	-	-	-
Limited English Proficient Students	-	-	-
Economically Disadvantaged Students	N/A	N/A	N/A

Data is presented for subgroups when the count is high enough under NCLB suppression rules.

NJASK Results - Math Grade Level - 05

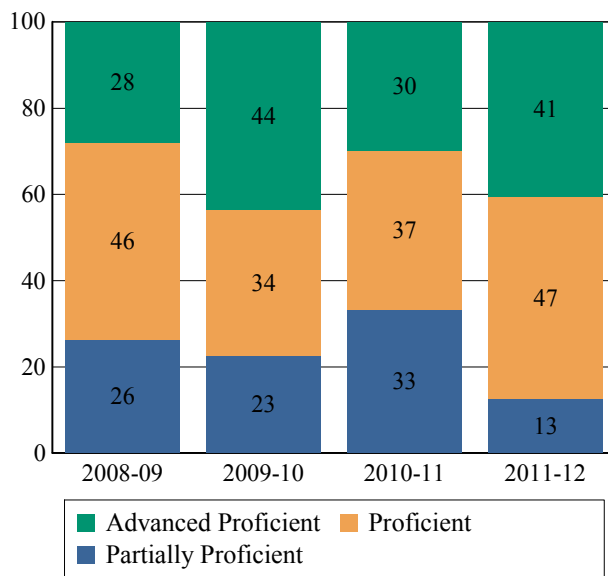
This table presents the grade level proficiency results, as measured by NJASK, in Advanced Proficient, Proficient, and Partially Proficient categories for all appropriate subgroups.

Subgroups	Advanced Proficient	Proficient	Partially Proficient
Schoolwide	33%	45%	22%
White	28%	47%	25%
Black	N/A	N/A	N/A
Hispanic	-	-	-
American Indian	N/A	N/A	N/A
Asian	53%	41%	6%
Two or More Races	N/A	N/A	N/A
Students w/ Disability	-	-	-
Limited English Proficient Students	N/A	N/A	N/A
Economically Disadvantaged Students	N/A	N/A	N/A

Data is presented for subgroups when the count is high enough under NCLB suppression rules.

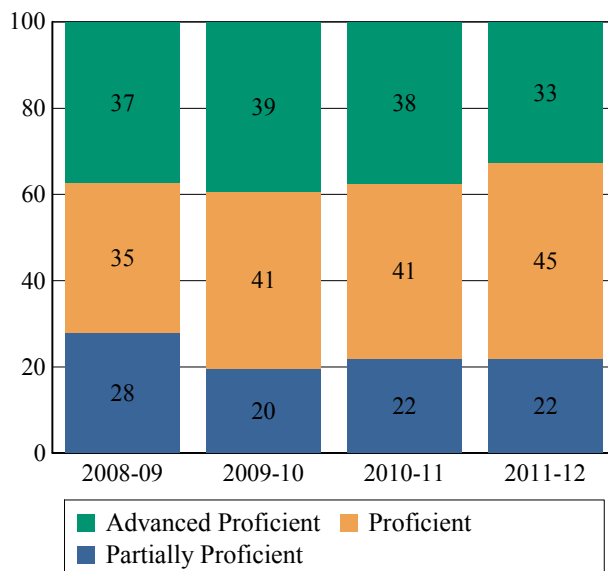
NJASK Proficiency Trends - Math - Grade Level - 04

This graph presents the grade level outcomes in the categories of Advanced Proficient, Proficient, and Partially Proficient over the last four years.



NJASK Proficiency Trends - Math - Grade Level - 05

This graph presents the grade level outcomes in the categories of Advanced Proficient, Proficient, and Partially Proficient over the last four years.





ACADEMIC ACHIEVEMENT

BERGEN

NORTHVALE BORO

GRADE SPAN 04-08

03-3730-050

NATHAN HALE

441 TAPPAN ROAD

NORTHVALE, NJ 07647

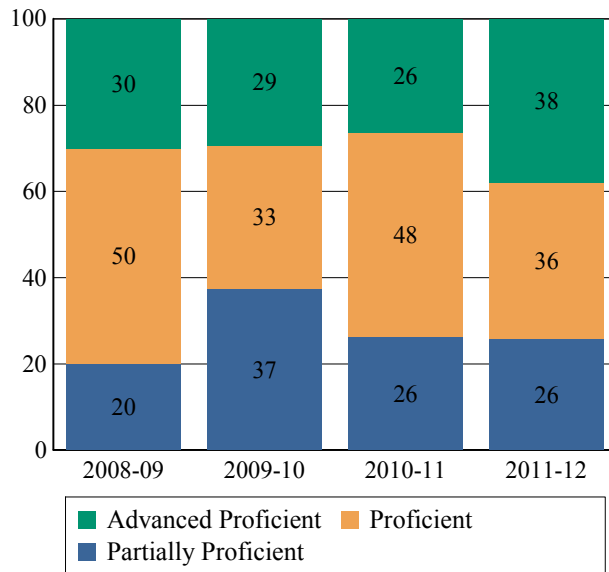
NJASK Results - Math Grade Level - 06

NJASK Proficiency Trends - Math - Grade Level - 06

This table presents the grade level proficiency results, as measured by NJASK, in Advanced Proficient, Proficient, and Partially Proficient categories for all appropriate subgroups.

This graph presents the grade level outcomes in the categories of Advanced Proficient, Proficient, and Partially Proficient over the last four years.

Subgroups	Advanced Proficient	Proficient	Partially Proficient
Schoolwide	38%	36%	26%
White	38%	31%	31%
Black	-	-	-
Hispanic	-	-	-
American Indian	N/A	N/A	N/A
Asian	56%	44%	0%
Two or More Races	N/A	N/A	N/A
Students w/ Disability	-	-	-
Limited English Proficient Students	-	-	-
Economically Disadvantaged Students	N/A	N/A	N/A



Data is presented for subgroups when the count is high enough under NCLB suppression rules.

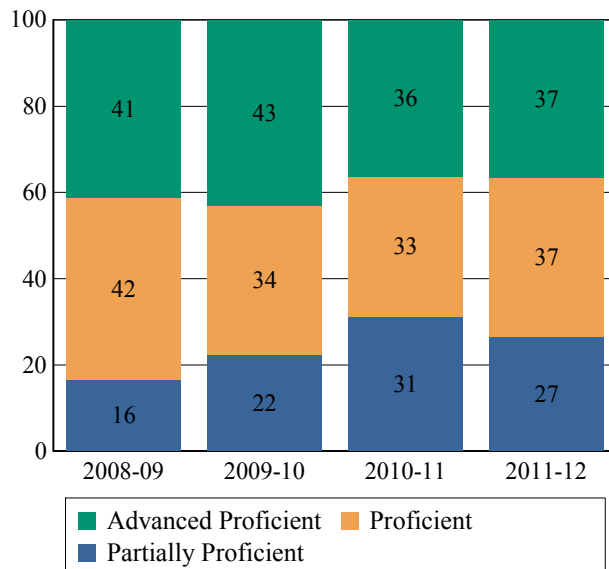
NJASK Proficiency Trends - Math - Grade Level - 07

NJASK Results - Math Grade Level - 07

This table presents the grade level proficiency results, as measured by NJASK, in Advanced Proficient, Proficient, and Partially Proficient categories for all appropriate subgroups.

This graph presents the grade level outcomes in the categories of Advanced Proficient, Proficient, and Partially Proficient over the last four years.

Subgroups	Advanced Proficient	Proficient	Partially Proficient
Schoolwide	37%	37%	27%
White	33%	33%	35%
Black	-	-	-
Hispanic	-	-	-
American Indian	N/A	N/A	N/A
Asian	64%	36%	0%
Two or More Races	N/A	N/A	N/A
Students w/ Disability	-	-	-
Limited English Proficient Students	-	-	-
Economically Disadvantaged Students	-	-	-



Data is presented for subgroups when the count is high enough under NCLB suppression rules.



State of New Jersey

03-3730-050

NATHAN HALE

441 TAPPAN ROAD

NORTHVALE, NJ 07647

ACADEMIC ACHIEVEMENT

BERGEN

NORTHVALE BORO

GRADE SPAN 04-08

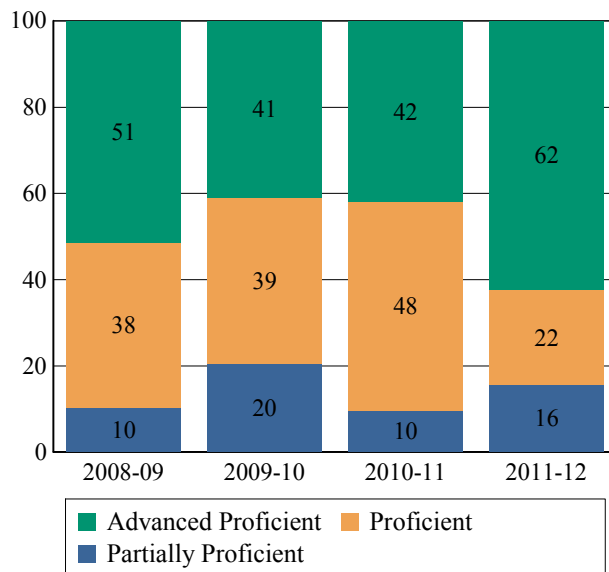
NJASK Results - Math Grade Level - 08

NJASK Proficiency Trends - Math - Grade Level - 08

This table presents the grade level proficiency results, as measured by NJASK, in Advanced Proficient, Proficient, and Partially Proficient categories for all appropriate subgroups.

Subgroups	Advanced Proficient	Proficient	Partially Proficient
Schoolwide	62%	22%	16%
White	54%	26%	19%
Black	N/A	N/A	N/A
Hispanic	-	-	-
American Indian	N/A	N/A	N/A
Asian	88%	12%	0%
Two or More Races	N/A	N/A	N/A
Students w/ Disability	-	-	-
Limited English Proficient Students	-	-	-
Economically Disadvantaged Students	N/A	N/A	N/A

This graph presents the grade level outcomes in the categories of Advanced Proficient, Proficient, and Partially Proficient over the last four years.



Data is presented for subgroups when the count is high enough under NCLB suppression rules.

2011 National Assessment Educational Progress (NAEP)

The National Assessment of Educational Progress (NAEP) is the largest national assessment of what our nation's students know and can do. NAEP assesses fourth-, eighth-, and twelfth-grade students in subjects such as reading, mathematics, science, and writing. The reporting of NAEP scores on state report cards is a federal mandate. The results of NAEP are also published as the Nation's Report Card, and are available for the nation, states, and, in some cases, urban districts. The NAEP scores on the report card include grades four and eight 2011 reading and math scores for New Jersey which are the last scores published. For subgroup outcomes, visit :

<http://www.nj.gov/education/pr/2013/naep/naep4math.html>

For more information, visit <http://nces.ed.gov/nationsreportcard/>

Proficiency Percentages

Grade 4 Math	State/Nation	Below Basic	Basic	Proficient	Advanced
All Students	State (NJ)	11.0	38.3	40.9	9.8
All Students	Nation	18.1	42.3	33.2	6.5

2011 National Assessment Educational Progress (NAEP)

The National Assessment of Educational Progress (NAEP) is the largest national assessment of what our nation's students know and can do. NAEP assesses fourth-, eighth-, and twelfth-grade students in subjects such as reading, mathematics, science, and writing. The reporting of NAEP scores on state report cards is a federal mandate. The results of NAEP are also published as the Nation's Report Card, and are available for the nation, states, and, in some cases, urban districts. The NAEP scores on the report card include grades four and eight 2011 reading and math scores for New Jersey which are the last scores published. For subgroup outcomes, visit :

<http://www.nj.gov/education/pr/2013/naep/naep8math.html>

For more information, visit <http://nces.ed.gov/nationsreportcard/>

Proficiency Percentages

Grade 8 Math	State/Nation	Below Basic	Basic	Proficient	Advanced
All Students	State (NJ)	17.8	35.3	33.2	13.6
All Students	Nation	27.7	38.8	25.7	7.8



State of New Jersey

03-3730-050

NATHAN HALE

441 TAPPAN ROAD

NORTHVALE, NJ 07647

ACADEMIC ACHIEVEMENT

BERGEN

NORTHVALE BORO

GRADE SPAN 04-08

NJASK Results - Science Grade Level - 04

This table presents the grade level proficiency results, as measured by NJASK, in Advanced Proficient, Proficient, and Partially Proficient categories for all appropriate subgroups.

Subgroups	Advanced Proficient	Proficient	Partially Proficient
Schoolwide	57%	38%	5%
White	59%	39%	2%
Black	N/A	N/A	N/A
Hispanic	-	-	-
American Indian	N/A	N/A	N/A
Asian	58%	33%	8%
Two or More Races	N/A	N/A	N/A
Students w/ Disability	-	-	-
Limited English Proficient Students	-	-	-
Economically Disadvantaged Students	N/A	N/A	N/A

Data is presented for subgroups when the count is high enough under NCLB suppression rules.

NJASK Results - Science Grade Level - 08

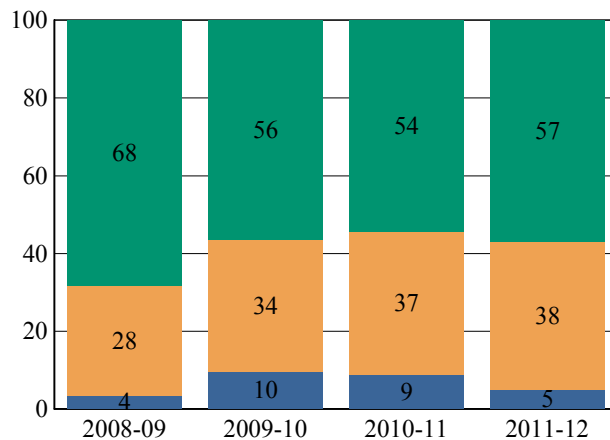
This table presents the grade level proficiency results, as measured by NJASK, in Advanced Proficient, Proficient, and Partially Proficient categories for all appropriate subgroups.

Subgroups	Advanced Proficient	Proficient	Partially Proficient
Schoolwide	62%	26%	12%
White	56%	30%	14%
Black	N/A	N/A	N/A
Hispanic	-	-	-
American Indian	N/A	N/A	N/A
Asian	82%	18%	0%
Two or More Races	N/A	N/A	N/A
Students w/ Disability	0%	27%	73%
Limited English Proficient Students	-	-	-
Economically Disadvantaged Students	N/A	N/A	N/A

Data is presented for subgroups when the count is high enough under NCLB suppression rules.

NJASK Proficiency Trends - Science - Grade Level - 04

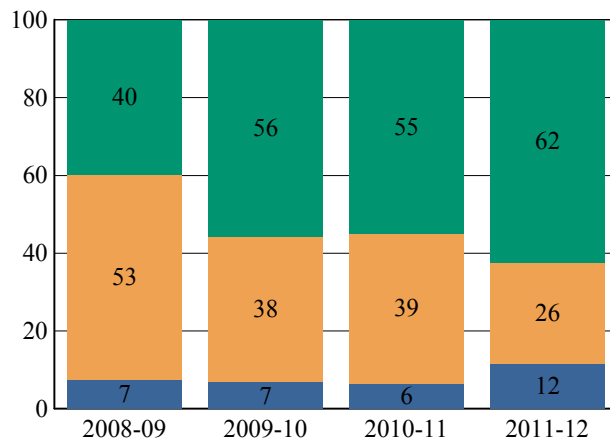
This graph presents the grade level outcomes in the categories of Advanced Proficient, Proficient, and Partially Proficient over the last four years.



Advanced Proficient Proficient Partially Proficient

NJASK Proficiency Trends - Science - Grade Level - 08

This graph presents the grade level outcomes in the categories of Advanced Proficient, Proficient, and Partially Proficient over the last four years.



Advanced Proficient Proficient Partially Proficient



State of New Jersey

03-3730-050

NATHAN HALE

441 TAPPAN ROAD

NORTHVALE, NJ 07647

COLLEGE AND CAREER READINESS

BERGEN

NORTHVALE BORO

GRADE SPAN 04-08

Students in both elementary and middle schools begin to demonstrate college readiness behaviors long before they even enter high school. Among the behaviors that research has shown to be indicative of success and college and career readiness are regularly attending school and challenging themselves with rigorous course work. First, the table presents the percentage of students, as measured against the school's enrollment in seventh and eighth grade, who were reported via NJSMART as being enrolled in Algebra I. The table also presents the percentage of students who were chronically absent during the prior school year. A chronically absent student is a student who was not present for any reason for more than 10% of the total days possible for that individual student.

The first column - Schoolwide Performance - represents the outcomes for these particular indicators in this school. The second column - Peer School Percentile Rank - indicates how the school's performance compares to its group of peer schools. For example, a school whose peer school rank is 65 in Algebra I Enrollment has a higher Algebra I Enrollment than 65% of its peer group. The third column - Statewide Percentile Rank - indicates how the school's performance compares to schools across the state. The fourth column - Statewide Target - provides the statewide targets for each of these indicators. The last column - Met Target? - indicates whether the School Performance met or exceeded the statewide target.

The Summary row presents the averages of the peer school percentile ranks, the average of statewide percentile ranks and the percentage of statewide targets met.

College and Career Readiness Indicators	School Performance	Peer Rank (Percentile)	Statewide Rank (Percentile)	Statewide Target	Met Target?
Students taking Algebra (%)	19%	29	53	20%	NO
Chronic Absenteeism (%)	3%	70	91	6%	YES
Summary		50	72		50%

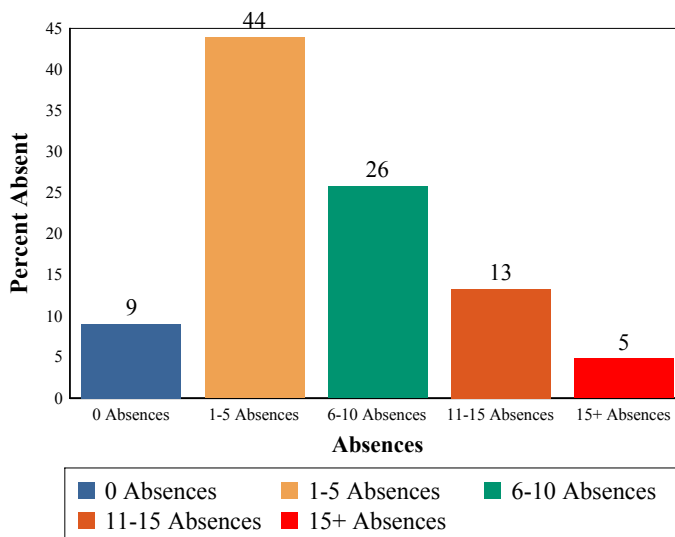
Algebra I

This table presents the percentage of seventh and eighth graders who were reported in the Algebra I course code in NJSMART and the percentage of those students who earned a C or higher in the course.

2011-12	School
Students taking Algebra I	19%
Algebra grade (C or better)	100%

Absenteeism

The chart below presents the percentage of students who were absent in each category of absence: 0 absences, 1- 5 absences, 6- 10 absences, 11 - 15 absences, and more than 15 absences. An absence is defined as being 'not present' and includes the days missed regardless of whether they were determined to be excused or unexcused by the school.





State of New Jersey

03-3730-050

NATHAN HALE

441 TAPPAN ROAD

NORTHVALE, NJ 07647

STUDENT GROWTH

BERGEN

NORTHVALE BORO

GRADE SPAN 04-08

This section of the performance report presents data about student growth, utilizing the Student Growth Percentile Methodology (SGP). SGP creates a measure of how students progressed in grades 4 through 8 in NJ ASK Language Arts Literacy and Math when compared to other students with a similar NJ ASK test score history. A short video explaining the methodology can be found here: <http://www.state.nj.us/education/njsmart/performance/>

The first column - Schoolwide Performance - presents the schoolwide median growth score in either Language Arts Literacy or Math for all students in the school. The second column - Peer Rank - indicates how the school's growth performance compares to its group of peer schools. The third column - Statewide Rank - indicates how a school compares to schools across the state. The last column - Met Target? - indicates whether the school's performance met or exceeded the target.

The summary row presents the averages of the peer school percentile ranks, the averages of statewide percentile ranks, the percentage of statewide targets met.

Student Growth Indicators	Schoolwide Performance	Peer Rank (Percentile)	Statewide Rank (Percentile)	Statewide Target	Met Target?
Student Growth on Language Arts	61	72	93	35	YES
Student Growth on Math	60	66	86	35	YES
		69	90		100%

Student Growth

This table presents for all students with growth scores the interaction between their proficiency level on NJASK and their growth scores. For example, in the top left cell the percentage of students who are both partially proficient AND also demonstrating low growth is displayed.

Language Arts

Math

	GROWTH		
	Low	Typical	High
Partially Proficient	9%	7%	4%
Proficient	11%	22%	29%
Advanced Proficient	1%	6%	11%

	GROWTH		
	Low	Typical	High
Partially Proficient	8%	5%	5%
Proficient	14%	12%	14%
Advanced Proficient	7%	10%	26%

Low Growth is defined as an **Student Growth Percentile** score less than 35.

Typical Growth is defined as an **Student Growth Percentile** score between 35 and 65.

High Growth is defined as a **Student Growth Percentile** score higher than 65.



State of New Jersey

03-3730-050

NATHAN HALE

441 TAPPAN ROAD

NORTHVALE, NJ 07647

WITHIN SCHOOL ACHIEVEMENT GAP

BERGEN

GRADE SPAN 04-08

NORTHVALE BORO

This section of the performance report presents data about the achievement gap that exists within a school - as measured by the difference between the students' scale scores at the 25th and 75th percentile in the school, the so-called Interquartile Range (IQR). Taken together with an understanding of the overall and average achievement levels in the school, the IQR furthers an understanding of the range of student outcomes that exist in a school. A school gap smaller than the state gap indicates that the school's range of student outcomes is narrower than the state's while a school gap larger than the state gap indicates that the school's range of student outcomes is larger than the state's.

Grade Level - 04

NJ ASK Language Arts 25th %ile vs 75th%ile

This table presents the scale scores associated with students at the bottom (0th percentile), the 25th percentile, the 50th percentile, the 75th percentile and the top (99th percentile) of school's distribution

Percentile	Scale Score
99th	261
75th	230
50th	209
25th	200
0th	170

	Scale Score Gap - School	Scale Score Gap - State
25th vs 75th Gap	30	31

Grade Level - 04

NJ ASK Math 25th %ile vs 75th%ile

This table presents the scale scores associated with students at the bottom (0th percentile), the 25th percentile, the 50th percentile, the 75th percentile and the top (99th percentile) of school's distribution

Percentile	Scale Score
99th	300
75th	258
50th	241
25th	208
0th	167

	Scale Score Gap - School	Scale Score Gap - State
25th vs 75th Gap	50	56

Grade Level - 05

NJ ASK Language Arts 25th %ile vs 75th%ile

This table presents the scale scores associated with students at the bottom (0th percentile), the 25th percentile, the 50th percentile, the 75th percentile and the top (99th percentile) of school's distribution

Percentile	Scale Score
99th	261
75th	235
50th	218
25th	200
0th	158

	Scale Score Gap - School	Scale Score Gap - State
25th vs 75th Gap	35	38

Grade Level - 05

NJ ASK Math 25th %ile vs 75th%ile

This table presents the scale scores associated with students at the bottom (0th percentile), the 25th percentile, the 50th percentile, the 75th percentile and the top (99th percentile) of school's distribution

Percentile	Scale Score
99th	300
75th	254
50th	242
25th	207
0th	151

	Scale Score Gap - School	Scale Score Gap - State
25th vs 75th Gap	47	56



WITHIN SCHOOL ACHIEVEMENT GAP

BERGEN

NORTHVALE BORO

GRADE SPAN 04-08

Grade Level - 06

NJ ASK Language Arts 25th %ile vs 75th%ile

This table presents the scale scores associated with students at the bottom (0th percentile), the 25th percentile, the 50th percentile, the 75th percentile and the top (99th percentile) of school's distribution

Percentile	Scale Score
99th	276
75th	235
50th	220
25th	197
0th	140

	Scale Score Gap - School	Scale Score Gap - State
--	-----------------------------	----------------------------

25th vs 75th Gap	38	34
------------------	----	----

Grade Level - 07

NJ ASK Language Arts 25th %ile vs 75th%ile

This table presents the scale scores associated with students at the bottom (0th percentile), the 25th percentile, the 50th percentile, the 75th percentile and the top (99th percentile) of school's distribution

Percentile	Scale Score
99th	283
75th	238
50th	223
25th	203
0th	109

	Scale Score Gap - School	Scale Score Gap - State
--	-----------------------------	----------------------------

25th vs 75th Gap	34	44
------------------	----	----

Grade Level - 06

NJ ASK Math 25th %ile vs 75th%ile

This table presents the scale scores associated with students at the bottom (0th percentile), the 25th percentile, the 50th percentile, the 75th percentile and the top (99th percentile) of school's distribution

Percentile	Scale Score
99th	300
75th	258
50th	233
25th	205
0th	144

	Scale Score Gap - School	Scale Score Gap - State
--	-----------------------------	----------------------------

25th vs 75th Gap	53	57
------------------	----	----

Grade Level - 07

NJ ASK Math 25th %ile vs 75th%ile

This table presents the scale scores associated with students at the bottom (0th percentile), the 25th percentile, the 50th percentile, the 75th percentile and the top (99th percentile) of school's distribution

Percentile	Scale Score
99th	300
75th	262
50th	221
25th	196
0th	121

	Scale Score Gap - School	Scale Score Gap - State
--	-----------------------------	----------------------------

25th vs 75th Gap	66	61
------------------	----	----



03-3730-050

NATHAN HALE

441 TAPPAN ROAD

NORTHVALE, NJ 07647

WITHIN SCHOOL ACHIEVEMENT GAP

BERGEN

NORTHVALE BORO

GRADE SPAN 04-08

Grade Level - 08

NJ ASK Language Arts 25th %ile vs 75th%ile

This table presents the scale scores associated with students at the bottom (0th percentile), the 25th percentile, the 50th percentile, the 75th percentile and the top (99th percentile) of school's distribution

Percentile	Scale Score
99th	279
75th	252
50th	235
25th	222
0th	154

	Scale Score Gap - School	Scale Score Gap - State
25th vs 75th Gap	30	33

Grade Level - 08

NJ ASK Math 25th %ile vs 75th%ile

This table presents the scale scores associated with students at the bottom (0th percentile), the 25th percentile, the 50th percentile, the 75th percentile and the top (99th percentile) of school's distribution

Percentile	Scale Score
99th	300
75th	279
50th	257
25th	228
0th	122

	Scale Score Gap - School	Scale Score Gap - State
25th vs 75th Gap	51	64



SCHOOL CLIMATE

BERGEN

NORTHVALE BORO

GRADE SPAN 04-08

Length of School Day

This table presents the amount of time a school is in session for a typical student on a normal school day.

	School
2011-12	6 Hrs 30 Mins

Student Suspension Rate

This table presents the percentage of students who were suspended one or more times during the school year.

	School
2011-12	5.0%

Instructional Time

This table presents the amount of time that a typical student is engaged in instructional activities under the supervision of a certified teacher.

2011-12	School
Full Time	5 Hrs 40 Mins.
Shared Time	0 Hrs. 0 Mins.

Student Expulsions

This table presents the number of students who were expelled from the school and district during the school year.

	School
2011-12	0

Student to Staff Ratio

This table presents the count of students per faculty member or administrator in the school. All staff are counted in full-time equivalents.

2011-12	School
Faculty	16.4
Administrators	

SCHOOL PEER GROUP**NATHAN HALE****03-3730-050**

This table presents the list of peer schools in alphabetical order by county name that was created specifically for this school (highlighted in yellow). Peer schools are drawn from across the state and represent schools that have similar grade configurations and that are educating students of similar demographic characteristics, as measured by enrollment in Free/Reduced Lunch Programs, Limited English Proficiency or Special Education Programs.

<u>COUNTY NAME</u>	<u>DISTRICT NAME</u>	<u>SCHOOL NAME</u>	<u>CDS CODE</u>	<u>GRADE SPAN</u>	<u>FRPL</u>	<u>LEP</u>	<u>SpED</u>
BERGEN	ALLENSDALE BORO	BROOKSIDE	03-0040-010	04-08	1.7%	1.3%	9.3%
BERGEN	HILLSDALE BORO	GEORGE G WHITE	03-2180-020	05-08	5.4%	0.0%	17.2%
BERGEN	NORTHVALE BORO	NATHAN HALE	03-3730-050	04-08	0.3%	2.8%	13.6%
BERGEN	NORWOOD BORO	NORWOOD	03-3740-020	KG-08	0.0%	3.3%	13.4%
BERGEN	OLD TAPPAN BORO	CHARLES DEWOLF	03-3850-030	05-08	0.0%	2.3%	8.2%
BERGEN	RAMSEY BORO	ERIC S SMITH	03-4310-055	06-08	4.0%	0.1%	13.6%
BERGEN	RIDGEWOOD VILLAGE	BENJAMIN FRANKLIN MIDDLE	03-4390-060	06-09	1.0%	2.1%	15.9%
BERGEN	RUTHERFORD BORO	PIERREPONT	03-4600-080	04-08	3.7%	0.6%	10.8%
BERGEN	RUTHERFORD BORO	UNION	03-4600-100	04-08	2.6%	1.2%	10.9%
BURLINGTON	MEDFORD TWP	MEDFORD TWP MEMORIAL	05-3080-055	07-08	5.6%	0.3%	17.2%
CAPE MAY	AVALON BORO	AVALON ELEM	09-0170-010	05-08	3.1%	0.0%	12.1%
ESSEX	CALDWELL-WEST CALDWELL	GROVER CLEVELAND MIDDLE	13-0660-060	06-08	4.1%	0.2%	14.6%
ESSEX	MILLBURN TWP	MILLBURN MIDDLE SCHOOL	13-3190-060	06-08	2.0%	1.5%	12.7%
HUNTERDON	CLINTON TWP	CLINTON TWP MIDDLE SCH	19-0920-050	07-08	4.6%	0.0%	18.8%
MERCER	HOPEWELL VALLEY REGIONAL	TIMBERLANE MIDDLE SCH	21-2280-075	06-08	2.8%	0.2%	11.7%
MERCER	ROBBINSVILLE TWP	POND ROAD MIDDLE SCHOOL	21-5510-040	04-08	3.2%	0.3%	10.8%
MONMOUTH	BRIELLE BORO	BRIELLE ELEMENTARY	25-0560-020	PK-08	4.2%	0.0%	11.5%
MONMOUTH	MILLSTONE TWP	MILLSTONE TWP MIDDLE SCH	25-3200-040	06-08	5.9%	0.0%	19.4%
MORRIS	DENVILLE TWP	VALLEYVIEW MIDDLE	27-1090-080	06-08	4.3%	0.9%	15.7%
MORRIS	HARDING TOWNSHIP	HARDING TWP	27-2010-050	PK-08	3.6%	0.0%	9.9%
MORRIS	MORRIS PLAINS BORO	BOROUGH	27-3380-020	03-08	1.4%	0.7%	9.7%
MORRIS	SCH DIST OF THE CHATHAMS	CHATHAM MIDDLE	27-0785-030	06-08	2.3%	0.9%	13.4%
OCEAN	POINT PLEASANT BEACH BORO	G HAROLD ANTRIM ELEM	29-4220-060	PK-08	4.4%	0.2%	11.5%
SOMERSET	MONTGOMERY TWP	MONTGOMERY LOWER MID SCH	35-3320-045	05-08	2.5%	0.7%	12.7%
SOMERSET	MONTGOMERY TWP	MONTGOMERY UPPER MID SCH	35-3320-070	07-08	3.9%	0.5%	11.2%
SUSSEX	SPARTA TWP	SPARTA MIDDLE SCHOOL	37-4960-057	06-08	4.0%	0.1%	14.0%
UNION	MOUNTAINSIDE BORO	DEERFIELD ELEMENTARY	39-3470-030	03-08	2.9%	0.2%	11.8%
UNION	NEW PROVIDENCE BORO	NEW PROVIDENCE MIDDLE SCH	39-3560-080	07-08	1.6%	0.5%	9.7%
UNION	SCOTCH PLAINS-FANWOOD REG	TERRILL MIDDLE	39-4670-065	05-08	4.3%	0.0%	11.0%
UNION	WESTFIELD TOWN	THOMAS EDISON INTER	39-5730-070	06-08	3.4%	0.7%	14.8%