



NEW JERSEY SCHOOLS
DEVELOPMENT AUTHORITY

BIANNUAL REPORT



FOR THE REPORTING PERIOD OF OCTOBER 1, 2022 - MARCH 31, 2023

New Jersey Schools Development Authority (SDA)

The New Jersey Schools Development Authority (SDA or the Authority) fully funds and manages the new construction, modernization and renovation of school facilities projects in 31 school districts known as SDA Districts. The Authority also makes grants available to Regular Operating Districts (RODs) throughout New Jersey for facilities projects approved by the New Jersey Department of Education (DOE).

SDA MISSION

Our mission is to deliver high-quality educational facilities that best meet the needs of the students of the State of New Jersey. While providing efficiently designed facilities that enhance the academic environment, we promote fiscal responsibility in the management of taxpayers' resources.

SDA EXECUTIVE STAFF



Manuel M. Da Silva
Chief Executive Officer



Donald R. Guarriello
*Vice President and Chief
Financial Officer*



Jane F. Kelly
*Vice President – Corporate
Governance and
Legal Affairs*

SDA BOARD MEMBERS

Public Members



Robert Nixon, Chairman
*Director of Government Affairs,
NJ State Policeman's Benevolent Assn.*



John Capo
*Director, Bricklayers and Allied
Craftworkers
Administrative District Council of NJ,
Locals 4 and 5*



Daniel Gumble
*Business Representative, I.B.E.W. Local
164*



Lester Lewis-Powder
Executive Director, Let's Celebrate, Inc.



Michael Maloney
*Business Manager/ Financial Secretary
Plumbers & Pipefitters Local Union No. 9
President, Mercer County Central Labor
Council*



Mario Vargas
*Broker/Owner
Senior Health Navigators, LLC.*

Ex-Officio Members



Angelica Allen-McMillan, Ph.D.
*Acting Commissioner, New Jersey
Department of Education*



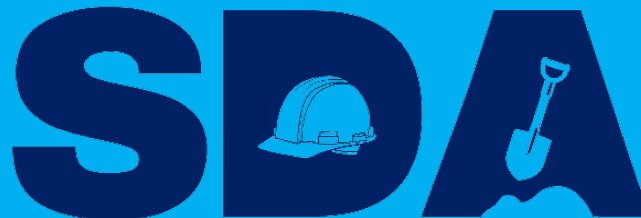
Tim Sullivan
*Chief Executive Officer, New Jersey
Economic Development Authority*



Lt. Governor Sheila Oliver
*Commissioner, New Jersey Department of
Community Affairs*



Elizabeth Maher Muoio
*State Treasurer, New Jersey Department of
the Treasury*



NEW JERSEY
SCHOOLS DEVELOPMENT AUTHORITY

TABLE OF CONTENTS

SDA EXECUTIVE STAFF	2
SDA BOARD MEMBERS	3
MESSAGE FROM THE BOARD CHAIRMAN & THE CHIEF EXECUTIVE OFFICER	5
SCHOOL CONSTRUCTION THROUGHOUT THE STATE	7
Capital Projects	7
<i>Charles and Anna Booker School to Open to Students This Fall</i>	7
<i>Construction Activities Ongoing Statewide</i>	8
Emergent Program	12
Capital Maintenance and Emergent Grant Funding	14
ROD Grant Program	15
<i>New ROD Grant Funding Approved</i>	15
<i>Previous ROD Grant Allocations</i>	16
School Facilities Projects Approved by DOE	17
<i>SDA Projects Recognized by Industry Professionals</i>	19
BENEFITTING NEW JERSEY BUSINESSES	20
Training Small Businesses to do Business with SDA	20
Small Business Goals	21
Upcoming Contract Opportunities	22
Minority/Female Workforce Hours	23
SDA FINANCES	25
RECOMMENDATIONS FOR CHANGE	26
Municipal Site Planning	26
Design-Build Construction Procurement Act Modifications	26

MESSAGE FROM THE BOARD CHAIRMAN & THE CHIEF EXECUTIVE OFFICER



Robert Nixon, Board Chairman

We are pleased to present the Biannual Report of the New Jersey Schools Development Authority (SDA) for the period October 1, 2022, through March 31, 2023. This report is submitted under the provisions of P.L. 2007, c. 137 and summarizes the progress and accomplishments of New Jersey’s school construction program during the six-month reporting period.



Manuel Da Silva, CEO

The SDA’s efforts to facilitate the availability of school facilities that best meet the needs of New Jersey’s students continue to advance. In 2023, the SDA will open the new Charles and Anna Booker Elementary School in Plainfield and complete the final phases of work at the Millville Senior High School and Keansburg Port Monmouth Road School. In addition, work continues on the largest project ever undertaken by the SDA, the new 576,000 square-foot Perth Amboy High School, and earthwork has begun at the site for the construction of a new grade seven to nine school in Union City.

SDA’s projects, similar to like projects in both the public and private sectors, have experienced challenges as a result of supply chain issues stemming from the pandemic. In the face of these added obstacles, the Authority worked with our construction partners to minimize project impacts whenever possible.

Governor Murphy and the Legislature demonstrated their commitment to the school construction program with the allocation of funding to SDA from the Debt and Defeasance Fund. This infusion of funding into the program will enable the SDA to continue to address additional capital facility needs that exist throughout the State. SDA has initiated design activities on five of the 19 capital projects approved for advancement in SDA Districts in 2022. Two of those projects will begin demolition activities later this summer. In addition, SDA recently employed an alternative delivery method to address one of the identified project needs through the acquisition of a vacant, non-operational

charter school building. Scope development and scope finalization activities are ongoing for the remaining 13 projects.

Solicitations for the Authority's Regular Operating District (ROD) Grant program opened in January 2023, enabling ROD districts to submit applications for approval of proposed school facility projects to receive State funding equal to a minimum of 40 percent of their project(s) eligible costs. Following review and the final determination of eligible costs and grant amounts by the New Jersey Department of Education (DOE), SDA expects to issue grant offers in the third and fourth quarters of 2023. This important grant funding will leverage millions in construction funds in counties statewide. The \$350 million of new grant funding made available through the Debt and Defeasance Fund, when combined with approximately \$100 million of uncommitted funds remaining from previous funding allocations, will enable the SDA to offer nearly a half a billion dollars in grants to New Jersey's RODs and vocational school districts later this year.

Also this year, the SDA continued our efforts to proactively engage the contracting community, our stakeholders, and the communities we serve. SDA once again offered its annual Contractor Training Program this reporting period. Twenty (20) firms successfully completed this year's program resulting in a new group of small business enterprises better positioned to grow their businesses and to do work with the school construction program. SDA also continues to have productive and mutually beneficial collaborations with school districts and groups including, among others, the New Jersey School Boards Association, Healthy Schools Now, the Alliance for Action, and Great Schools New Jersey, to share information and updates on the work of the Authority.

Over the life of New Jersey's school construction program, the SDA has remained steadfast in its focus on constructing new schools to reduce overcrowding and ensuring that New Jersey's students have safe and educationally adequate school facilities. SDA's Board of Directors, management, and staff are committed to working with the Administration, the Legislature, and our stakeholders to advance the essential work of the SDA's school construction program.

SCHOOL CONSTRUCTION THROUGHOUT THE STATE

Capital Projects

Charles and Anna Booker School to Open to Students This Fall



The new Charles and Anna Booker School will open to Plainfield students and staff in the fall of 2023. The SDA anticipates a ribbon cutting ceremony for the new school this summer. The Plainfield Board of Education named the new school facility in honor of longtime civil rights activists Charles and Anna Booker.

The Bookers were born and raised in the City of Plainfield where they have been involved in the community organizing and advocating their entire lives. Among many things, Mrs. Booker was a teacher in Plainfield when the Plainfield Public School District began hiring African American teachers, and went on to serve the District for 20 years before retiring. In 1965, the Bookers filed and were successful in a lawsuit, *Booker v. Board of Education of City of Plainfield*, with the aim of ending segregation in Plainfield schools.

The three-story, approximately 120,000 square-foot Booker School is designed to educate a maximum of approximately 840 students in Kindergarten to fifth grade. The school includes 41 classrooms as well as an art room, a vocal/music room, an instrumental lesson room, a technology lab, a science demo room, a computer lab, a gymnasium, a cafeteria, a media center, a playground, and a basketball court.



At the end of the reporting period, work completed on the facility included finish work on the interior and exterior, landscaping, and inspections. Also during the reporting period, the facility's building management system was being brought online, and furniture installation commenced.

The \$59.4 million Booker School facility is the third Capital Project built by the SDA in Plainfield. To date, the SDA has invested more than \$147 million in completed projects in Plainfield.

This new state-of-the-art facility will serve as a part of the Bookers' legacy for generations to come.

Construction Activities Ongoing Statewide

In addition to the new Charles and Anna Booker School discussed above, the reporting period was highlighted by a substantial amount of activity on the SDA's Capital Portfolio projects, including five projects in construction as of March 31, 2023. These five projects (including several that will open this fall) will provide more than 6,150 new seats once completed and represent a state investment of \$610 million.

The **Keansburg Port Monmouth Road School** project includes an approximately 27,500 square-foot addition that opened to students in September 2022. SDA continued work throughout the reporting period on the final phase of work – 19,000 square feet of renovations to the existing facility that included eight pre-kindergarten classrooms, a gross motor skills area, and two new playgrounds. At the end of March 2023, punch list items and inspections of the renovated spaces were ongoing. Students will have full use of the facility when they return for the start of school in September 2023.

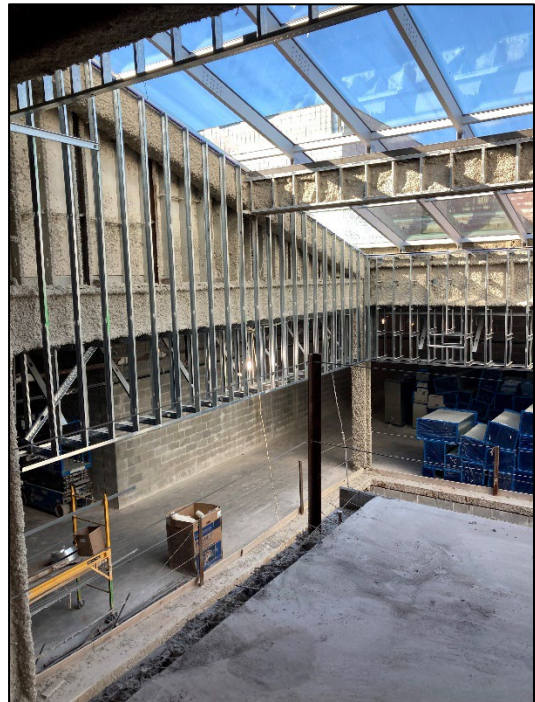




The **Millville Senior High School** project is a multi-phase, multi-year project. Several phases of the project have been completed and are in use by students, including several additions. During the reporting period, SDA was finishing the final portion of Phase IV work on the approximately 27,000 square-foot new auditorium. This new auditorium seats 1,149 students and includes an orchestra pit. Interior finishes and

inspections were ongoing at the end of the reporting period. A temporary certificate of occupancy for this was received in May 2023.

The largest project ever undertaken by the SDA continued to advance at a rapid pace throughout the reporting period. As you pass by the new 576,000 square-foot **Perth Amboy High School**, you can see the impressive structure that will serve 3,300 ninth to twelfth graders once complete. Ongoing work during the reporting period included interior wall framing, exterior masonry, window and skylight installation, the use of temporary heat, drywall work, and placement of HVAC rooftop equipment, as well as the advancement of mechanical, electrical and plumbing work. In addition to general classrooms and science labs, the school will provide specialized educational spaces such as an automotive lab, culinary arts lab, black box studio, dance studio, ROTC classroom, world languages classroom, and a life skills lab.



Initial site work began during the reporting period for the new **Grade 7 through 9 School in Union City**. The new school is designed to educate a maximum of 930 students which encompasses six stories and is comprised of approximately 130,000 square-feet. The

project will also include a play area, a service yard, and a pedestrian walkway between 36th Street and 37th Street in the city. By the end of the reporting period, the contractor had mobilized onto the site and site work had commenced.

In addition to the projects in construction highlighted here, during the reporting period, the SDA also advanced a construction procurement for the **Orange Cleveland Street Elementary School** project. The project includes an 11,600 square-foot addition to the 100+ year-old existing facility which was built in the 1890s. The addition will include 15 classrooms and a multi-purpose room with a stage.

This project also comprises 38,775 square-feet of renovations/alterations to the existing facility, work which was preceded by substantial asbestos abatement activities. The renovations include converting the basement areas to provide a main office, a media center, an art room, a music room, a science room, and a computer instructional area. Due to unforeseen circumstances that impeded the contractor’s ability to perform, the SDA moved forward with a termination for convenience in 2022. As a result, the SDA was required to rebid the construction contract in order to complete the project. A construction contract was awarded in May 2023 after this reporting period concluded.

SDA Projects in Construction as of March 31, 2023				
District	Project Name	Project Type	Total Estimated Project Cost	Max Student Capacity
Keansburg	Port Monmouth Road	Addition/Renovation	\$28.4 M	318
Millville	Millville Senior H.S.	Addition/Renovation	\$145.0 M	2,384
Perth Amboy	High School	New School	\$283.8 M	3,295
Plainfield	Charles and Anna Booker School	New School	\$59.4 M	830
Union City	Grade 7 to 9 School	New School	\$93.7 M	936
5 capital school facilities projects in construction			\$610.3M	7,763

Advancement of New Capital Portfolio Projects

The Governor's and Legislature's approval of nearly \$2 billion in funding last year has enabled the Authority to take significant steps towards advancement of 19 capital projects in 14 SDA Districts. The construction of these schools will provide more than 11,700 new seats in districts that are experiencing capacity deficiencies or extreme facility conditions deficiencies.

SDA has begun design activities on five of the 19 projects approved for advancement and, in November 2022, Preliminary Project Charters were approved by the Authority's Board of Directors for projects in Bridgeton, Elizabeth, and Garfield. The SDA also has begun design activities on projects in Trenton and Paterson, and expects to begin demolition activities at the sites of two projects (Elizabeth and Garfield) later this year. In addition, SDA recently employed an alternative delivery method to address one of the projects approved for Newark. SDA's recent acquisition of a vacant, non-operational charter school building earlier this year will enable the district to welcome over 300 students to this facility in Fall 2023.

Scope development and scope finalization activities are ongoing for the remaining 13 recently approved new capital projects. The preliminary planning assumptions utilized to develop initial scopes for these projects as represented in SDA's Strategic Plan are under review with each district and with the Department of Education. The SDA planning team is meeting with districts and DOE to ensure that the projects that are advanced are the most responsive and appropriate to fulfill district needs. These projects are all anticipated to advance into construction within the next five to seven years.

For further clarification of the advancement process, the chart provided below details the steps to advance a new school through completion employing a design-build approach, which is the SDA's most often utilized project delivery approach. Project schedules are based upon a standard schedule template, which are then modified based on particular project scope considerations. The standard design-build schedule, with an outside design bridging consultant, allows for the following durations:

Sample Design-Build with Outside Bridging Design Consultant Schedule

Project Completion Phase	Typical Duration	Details
Program-Concept Phase	4 to 6 Months	Varies depending upon complexity of Project and responsiveness of district. Can include site surveys, site environmental investigations, submitting EO215 to NJ Department of Environmental Protection, Development and approval of program and conceptual design.
Early Site Package (ESP)	12-18 Months	Goal is to overlap this phase with Program Concept and Bridging Design Consultant phases. This can include Hazmat/site investigation, site work design, ESP construction procurement, and ESP work.
Outside Bridging Design Consultant Assignment	2 Months	Offer and acceptance of task order assignment under SDA's existing Bridging Design Consultant Services contract.
Schematic Design Phase/Bridging Design Phase	12-16 Months	Includes programming interviews, developing schematic drawings, drafting schematic design documents, design review and approval, materials and systems review/selection, draft performance specifications, building elevation options, interior color and finishes selection, draft/finalize bridging documents
Design-Build Procurement Phase	7-8 Months	Based on current Design-Build Procurement Regulations excluding Office of the State Comptroller approvals, which are concurrent with Bridging Design Phase
Design-Build Phase (final design and construction services)	30 -36 Months	Standard duration for typical projects. (More for larger and more complex projects)
Total Typical Duration	48-60 Months	

Emergent Program

SDA's Emergent Project Program provides the funding for important repair projects at schools throughout the state so that students can learn in facilities that are free from building deficiencies. Through this Program, SDA remediates facilities conditions deemed to have the potential for health and safety concerns as determined by the DOE. Emergent projects address such conditions as water infiltration issues and include the repair or replacement of roofs, windows, exterior masonry, heating and cooling systems, plumbing, electrical, mechanical, and security systems.

During the reporting period, the SDA completed two emergent projects that addressed structural repairs at the Malcolm X. Shabazz High School and basement water infiltration repairs at Roberto Clemente Elementary School in Newark. These two projects represented more than \$3.5 million in emergent repairs.

SDA is currently managing 13 emergent projects that represent a greater than \$44 million state investment to improve existing buildings in the 31 SDA Districts. At the close of the reporting period, the status of active SDA-managed emergent projects is as follows:

- 1 project in construction,
- 4 projects in design,
- 6 projects in Procurement (General Construction Task Order (GCTO) with Design), and
- 2 projects in scope development.

SDA-Managed Emergent Projects			
District	School Name	Project Scope	Status
Burlington	Samuel Smith E.S.	Window Repair/Replacement Partial Roof Replacement	GCTO w/ Design Procurement
Camden City	Veterans Memorial School	Exterior Masonry, Windows, Roofing & Site Work	Design
East Orange	Fresh Start Academy	Water Infiltration, Roof, Masonry	Scope Development
Irvington	Grove Street School	Boiler Replacement & HVAC Repairs	GCTO w/ Design – Design Phase
Newark	Branch Brook E.S.	Water infiltration – Exterior Masonry	Scope Development
Newark	Cleveland E.S.	Boiler Room Vault Repairs	GCTO w/Design – Design Phase
Newark	Salome Urena	Water Infiltration – Exterior masonry	GCTO w/ Design Procurement
Newark	Technology HS	Structural Vault Repairs/Façade Repairs	GCTO w/ Design – Design Phase
Newark	University HS	Partial Roof Replacement	GCTO w/ Design Procurement
Paterson	PS 5 E.S.	Exterior Masonry & Roofing	Construction
Trenton	Franklin E.S.	Exterior Masonry and Boiler Stack Repair	GCTO w/ Design Procurement
Union City	Emerson M.S.	Roof Replacement and Stucco Repairs	GCTO w/ Design Procurement
Union City	Union Hill M.S.	Roof Replacement, Stucco Repairs, and Chimney Repairs	GCTO w/ Design Procurement

SDA is also providing funding for two additional emergent projects delegated for management by local school districts which represent \$6 million in total costs. When delegating projects, SDA executes a grant agreement with a local school district. The district is then responsible for procuring and managing consultants and contractors, with SDA maintaining oversight throughout the process.

District-Managed Emergent Projects			
District	School Name	Project Scope	Status
Newark	Hawthorne School	Exterior Masonry Water Infiltration	Construction
Newark	Malcolm X Shabazz H.S.	Courtyard Drainage Water Infiltration	Construction

SDA also performs site visits at school facilities where funding for potential emergent projects has been requested. The SDA will only advance additional emergent projects after an emergent determination has been made by the DOE, and funding is available to undertake additional projects.

Capital Maintenance and Emergent Grant Funding

The New Jersey State FY 2023 budget once again included a direct appropriation of \$75 million to the SDA to provide funding for projects related to emergent and capital maintenance needs. This funding allows both ROD and SDA Districts throughout the state to invest in infrastructure projects that will make New Jersey’s school facilities healthier and provide safer environments for students. The SDA’s funding can offset a district’s costs incurred in addressing those building conditions.

The amount of funds allocated to each district was determined by the DOE’s formula. The formula utilized in connection with the FY 2022 funding was employed this year as well, but the allocation was adjusted based upon updated enrollment data. The complete list of all districts and their allocations is available [here](#).

In order for school districts to receive their allocated funding, they must submit to SDA a duly-executed certification and listing of an eligible emergent and/or capital maintenance project(s). At the end of the reporting period, the SDA had disbursed \$91.1 million to SDA Districts and \$36.2 million to RODs of the FY 2022 and FY 2023 Grants. SDA will continue to disburse the remaining \$22.7 million in grant funding as districts submit the required certifications.

SDA has analyzed a sampling of the projects funded in FY 2022 and FY 2023 to date, and determined that the majority of the available funding has been used to address HVAC, building envelope, life safety, and security needs.

ROD Grant Program

New ROD Grant Funding Approved

SDA's grant funding for school facility projects in RODs has had an enormous impact in more than 520 school districts across New Jersey's 21 counties since the program's inception.

With previous SDA funding for these projects nearly exhausted, in June 2022, Governor Murphy signed Senate Bill No. 2944 into law as P.L.2022, c.18. This legislation allocated \$350 million in ROD grant funding for high-priority capital projects in school districts throughout the state.

In November 2022, the SDA and DOE issued an initial joint broadcast announcing the upcoming grant program so that school districts would have ample time to prepare and plan their proposed projects in advance of the application cycle beginning in January 2023. The application cycle opened on January 30, 2023, and closed on May 1, 2023. The DOE has 90 days to review applications and make project determinations.

For a school facilities project to be considered for grant funding, the proposed scope of work must be 100 percent eligible for state support and be included in one of the priorities detailed in the broadcast. Once a school facilities project is determined by the DOE to have 100 percent eligible scope, it will be categorized into one of the listed project areas for determination of sub-ranking priority. Priority will be given to school facilities

projects that address critical operational building needs, including health and safety issues and program mandates. The priority level categories are as follows:

- Essential building systems upgrades
- Building skin
- Building code issues
- ADA upgrades
- Hazardous material abatement
- Security and communications systems
- Technology infrastructure upgrades.
- Site drainage (to remediate an existing problem)
- Elementary school playgrounds (upgrade or replacement of existing playgrounds)
- Renovated or new early childhood classrooms
- Special population needs (for program expansion or educational adequacy.)
- Existing site upgrades, excluding athletic fields and tracks
- Renovation and/or new construction of capacity-generating classrooms to address overcrowding or substandard conditions.

Following review and a determination by the DOE, transmittals are forwarded to the SDA to offer and execute grants for approved projects throughout the state. School districts will receive at least 40 percent of eligible project costs for approved projects.

"This grant funding will allow hundreds of Regular Operating Districts throughout the state to make critical school infrastructure upgrades, further supporting quality learning environments that will positively impact student learning. Through our continued partnership with the DOE, SDA will support the advancement of school construction projects that improve and extend the lifecycle of the state's school facilities."

-Manuel Da Silva, SDA CEO

Previous ROD Grant Allocations

Of the \$3.65 billion in previously authorized funding for the ROD grant program (for both RODs and Vocational School Districts), \$3.4 billion has been expended to date. Of

that funding, \$100 million remains uncommitted and, therefore, that funding will be added to the \$350 million in new funding authorized in FY2022 to allow for the approval of additional grants.

During the reporting period, SDA disbursed 18 payments totaling over \$2.3 million, which included the close-out of 10 projects impacting four school districts.

Previously executed ROD grants continue to benefit school districts, as demonstrated by the SDA’s active portfolio of 185 grant projects in 48 school districts throughout the state. At the end of the reporting period, these active projects represented more than \$68 million in state share, generating a total investment of more than \$142 million in project costs. With this significant investment, the state continues to support educational needs while contributing to a strong economy.

School Facilities Projects Approved by DOE

From October 1, 2022 through March 31, 2023, the DOE issued approvals for 73 school facilities projects in RODs. None of these projects exceeded the Facilities Efficiency Standards (FES).

School Facilities Projects Approved by DOE				
October 1, 2022 – March 31, 2023				
	Total School Facilities Projects Approved	Required Educational Adequacy/ FES Review	Projects Requiring Educational Adequacy/RES Review & Exceeding the FES*	% of Projects Requiring Educational Adequacy/FES Review and Exceeding the FES
All Districts	73	28	0	0
SDA Districts	0	0	0	0
RODs	73	28	0	0

Note: The information included in the table above was provided by the DOE, Office of School Facilities.

The DOE approved 26 “Other Capital” projects for SDA Districts. These are outside the SDA Managed funding process and not reflected in the table above. The DOE approved 295 “Other Capital” projects for RODs. These projects are not reflected in the table above. An “Other Capital” project is a project that is either not eligible for or not seeking State funding support.

Metropolitan Statistical Comparison

In an effort to ensure that SDA’s construction costs are reasonable when compared to school construction costs in geographic areas with comparable building and economic conditions, the Authority’s 2007 enabling legislation requires that twice per year SDA management provide the Legislature a comparison of SDA’s capital project costs with those of projects constructed in the New York City and Philadelphia Metropolitan Statistical Comparison areas (MSA).

The SDA did not advertise any Capital Projects during this reporting period and therefore does not have any SDA/MSA comparative data to provide at this time. However, significant in this regard is that SDA’s cost per square foot for an elementary school project during recent reporting periods ranged from \$300 to \$325 and a middle school project was \$483 per square foot. Conversely, during this reporting period, the cost per square foot for a school in the New York City MSA was \$940 for an elementary school, \$913 for a middle school, and \$306 for a high school. The Philadelphia MSA reported a cost of \$350 per square foot for an elementary school, \$535 per square foot for a middle school, and \$495 cost per square foot for a high school.

The data for the New York MSA is inclusive of New York City and its surrounding suburban counties including those located north and east of the city. The data also includes reported costs for facilities in counties in central and northern New Jersey.

Also of note, the New York City School Construction Authority reported a construction bid price for school capacity projects of \$905 per square foot for FY 2022, which is up from \$710 in 2021.

SDA Projects Recognized by Industry Professionals



SDA was recently honored for its work on the Camden High School and Perth Amboy High School projects. The Camden High School project was selected by the United States Green Building Council – New Jersey (USGBC-NJ) as LEED Project of the Year in the ‘Schools’ category. The project was nominated for this award

by the members the USGBC New Jersey Market Leadership Advisory Board. SDA accepted the award at a ceremony held in December 2022.

The new Perth Amboy High School project was one of 20 infrastructure projects honored at the New Jersey Alliance for Action’s Leading Capital Construction Projects Awards program in February 2023. According to the New Jersey Alliance for Action, the “New Jersey’s Leading Capital Construction Projects” awards program was created to highlight innovative, pioneering, and landmark construction initiatives that greatly impact the state’s economy and to honor the businesses and organizations that work together as partners to ensure the project’s success.



BENEFITTING NEW JERSEY BUSINESSES

Training Small Businesses to do Business with SDA



In December 2022, SDA transitioned back to a pre-pandemic in-person format for its annual Contractor Training Program for small, minority, women, veteran, and disabled veteran-owned business enterprises.

Returning for its twelfth year, the program was held December 5th and 6th at the SDA's offices in Trenton. In an effort to more efficiently utilize the time of both SDA staff and participants and to make it easier for participating firms to attend, the SDA modified this year's program by condensing the previous eight-weekly sessions into two full-day sessions. With creative coordination and planning, SDA was able to employ this abbreviated schedule without sacrificing program content.

The Contractor Training Program consists of instructional classes that are largely taught by SDA employees with subject matter expertise. It provides participants with valuable instruction on construction business basics and management practices, and provides participants with insight on how to do business with the SDA and other state agencies.

Once again, the SDA was pleased to welcome instructors this year from the New Jersey Department of Treasury's Division of Property Management and Construction, the New Jersey Department of Labor's Division of Wage and Hour Compliance, and the New Jersey Economic Development Authority. Program graduates were also given an opportunity to participate in a networking session following the graduation with large firms such as Epic Management, Gilbane Building Company, Hall Construction and

Terminal Construction. Each of these firms had previously obtained general contracting and design-build contracts for the State's school construction program.

This year's 20 graduate firms represented all aspects of the construction industry and add to the growing number of firms who have received this specialized training regarding how to do business with the State of New Jersey.

To date, the SDA has trained more than 240 firms through its in-house Contractor Training Program. The Program has provided these minority, women, veteran and disabled veteran-owned business enterprise firms with the specific knowledge and opportunities they need to obtain school construction work and grow their businesses. At the same time, the Training Program enables SDA to expand its network of small businesses who contribute to the success of our projects.

The SDA intends to continue annual offerings of this training program in 2023.

Small Business Goals

The SDA is committed to ensuring that at least 25% of the total dollar value of all publicly advertised contracts we award during a fiscal year go to small business enterprises. The SDA requires consultants and prime contractors to make good-faith efforts to identify and hire available small business enterprise sub-consultants and sub-contractors and to award at least 25% of the total contract value to them.

Specific contract activity during this reporting period included one SDA-awarded contract totaling \$2,282,336, with 2.23 percent of the total dollar value awarded *so far* to Small Business Enterprises.

"Beyond the technical knowledge that we gained, we had the pleasure of meeting everyone at the SDA, and feel firsthand how much each one of you is caring and passionate about working for the public schools and taking care of the future of our children."

-Contractor Training Program Graduate Musab Sasa

The SDA also compiles information on the number of school construction contracts awarded by the Authority to women, minority, veteran and veteran-owned contractors. This information includes the total value of these contracts and the percentage that they represent of all SDA school facilities projects that have entered into construction during the reporting period. With only one construction manager contract awarded this reporting period, there were no awards to women-owned, minority-owned, veteran, or disabled-veteran-owned businesses during the reporting period.

As this reporting period only included one contract award, this is not representative of SDA’s overall SBE numbers which routinely surpass 25% of the total contract value at the completion of the contract.

Upcoming Contract Opportunities

As the SDA advances work associated with recently approved capital and emergent projects, there will be several contract opportunities for the construction community. Below is the current list of opportunities for the second half of 2023 and the beginning of 2024. It is important to note that the advancement of these projects is dependent on a number of variables, and therefore this information is subject to change.

Construction/Design-Build

District	School	Contract Type	Project Type	CCE Range ¹	Projected Advertisement	County
Garfield	New Elementary School (Wilson #5 Replacement)	General Construction	Building Demolition & Site Preparation	< \$5M	Q3 2023	Bergen
Elizabeth	New Elementary School (Battin Replacement)	General Construction	Building Demolition & Site Preparation	< \$5M	Q2/Q3 2023	Union
Garfield	New Elementary School (Wilson #5 Replacement)	Design-Build	New School	\$55M to \$65M	Q3/Q4 2023	Bergen
Bridgeton	Bridgeton High School	Design-Build	Addition & Renovation	\$35M to \$45M	Q4 2023	Cumberland
Elizabeth	New Elementary School (Battin Replacement)	Design-Build	New School	\$65M to \$75M	Q1 2024	Union
Paterson	New STEAM High School	Design-Build	New School	\$95M to \$115M	Q2 2024	Passaic
Trenton	New Elementary School (Dunn MS Site)	Design-Build	New School	\$55M to \$65M	Q2 2024	Mercer

1. CCE Range is for order of magnitude informational purposes, actual advertised CCE range may differ.

Construction Management Services

District	School	Contract Type	Project Type	Project Size CCE Range	Projected Advertisement	County
Garfield	New Elementary School (Wilson #5 Replacement)	Construction Manager	New School	\$55M to \$65M	Q4 2023	Bergen
Elizabeth	New Elementary School (Battin Replacement)	Construction Manager	New School	\$65M to \$75M	Q1 2024	Union
Bridgeton	Bridgeton High School	Construction Manager	Addition & Renovation	\$35M to \$45M	Q1 2024	Cumberland
Paterson	New STEAM High School	Construction Manager	New School	\$95M to \$115M	Q2 2024	Passaic
Trenton	New Elementary School (Dunn MS Site)	Construction Manager	New School	\$55M to \$65M	Q3 2024	Mercer

Minority/Female Workforce Hours

Through payroll certification, SDA tracks the number of work hours by trade, broken down by minority and female workers. The chart below demonstrates the number of work hours on active construction sites and the percentage breakdown by women and minorities. These numbers represent the work hours of 2,885 employees, inclusive of 824 minority employees and 55 female employees.

Number of Minority/Female Work-Hours by Trade (October 1, 2022-March 31, 2023)

Trade	Total Work-Hours	Minority Work-Hours	Minority Work-Hours Percentage	Female Work-Hours	Female Work-Hours Percentage
Bricklayer/Mason	39,169	20,921	53.41%	2	0.01%
Carpenter	27,976	2,337	8.35%	936	3.35%
Caulking & Waterproofing	2,982	2,494	83.64%	0	0
Communications Systems	48	0	0	0	0
Concrete/Cement Finisher	27	9	33.33%	0	0
Dry Wall - All	1,514	759	50.13%	0	0
Electrician	46,986	9,586	20.40%	1,167	2.48%
Elevator Constructor	345	89	25.8%	0	0
Flooring/Tile Installation	1,901	193	10.15%	121	6.37%
Glazier	10,348	96	0.93%	0	0
HVACR	23,727	917	3.86%	1,917	8.08%
Insulation - All	6,291	2,129	33.84%	0	0
Iron Worker	4,140	1,220	29.47%	47	1.14%
Laborer	44,296	28,100	63.44%	0	0

Trade	Total Work-Hours	Minority Work-Hours	Minority Work-Hours Percentage	Female Work-Hours	Female Work-Hours Percentage
Millwright	32	32	100%	0	0
On-site Supervision	84	0	0	0	0
Operating Engineer	2,740	196	7.15%	0	0
Painter	3,944	784	23.33%	80	2.03%
Pipefitter	40	0	0%	0	0
Plumber	14,029	3,245	23.13%	0	0
Roofer	10,005	1,904	19.03%	0	0
Sheet Metal Worker	18,460	1,633	8.85%	808	4.38%
Sprinkler Fitter	5,140	1,397	27.18%	0	0
Truck Driver	28	0	0	0	0
TOTALS	259,498	77,313	29.79%	5,078	1.96%

SDA FINANCES

Since the inception of the State Construction Program, the New Jersey State Legislature has authorized a total of \$14.75 billion in funding for SDA projects (\$10.75 billion for SDA Districts, and \$4.0 billion for RODs and vocational schools). Since the program's inception through the end of the reporting period (March 31, 2023), the amount of bonds issued and appropriations received, to fund the program are approximately \$11.85 billion, and \$350 million, respectively. There were no bond issuances or appropriations received during the reporting period.

As of March 31, 2023, SDA had approximately \$293 million in cash on hand, having disbursed over \$174 million during the reporting period. The Authority's most recent annual financial statements, audited by Ernst & Young LLP, can be found on the SDA's website at: <https://www.njsda.gov/Public/AnnualAndOtherReports>.

RECOMMENDATIONS FOR CHANGE

Municipal Site Planning

As the SDA seeks to address the capacity and facility issues identified in the Statewide Strategic Plan, one persistent challenge remains the availability of appropriate land for the construction of new school facilities.

The Capital Plan projects approved in April and September of 2022 can efficiently advance due to the availability of SDA land appropriate to serve as school construction project sites. If the SDA were to receive additional funding for the program, the acquisition of land would be required to advance more projects since, at the present time, with just a few exceptions, readily available land suitable to serve as school facility project sites is lacking in the SDA districts.

Given this reality, the SDA recommends that lawmakers consider the advancement of legislation that would require local municipalities to effectively consider potential school sites in their master planning efforts. A requirement that municipalities recommend appropriate sites on which schools could be constructed in the future where student populations are expected to increase would greatly assist the SDA in its efforts to deliver much-needed schools in a timely manner if funding for this purpose is made available.

Design-Build Construction Procurement Act Modifications

The SDA recommends revising the Design-Build Construction Procurement Act (Act) to allow the SDA to streamline the process and advance design-build projects more efficiently. Now that the SDA has experienced the design-build procurement process under the new Act's stipulations, there are several recommendations we would make that would allow the SDA to shorten the length of time from bid to award, while still maintaining the integrity of the process.

SDA respectfully requests that the legislation's mandatory shortlisting procedure be amended to become optional. This would allow SDA to eliminate the process step of a

qualifications-based review to arrive at a shortlist. SDA has a robust prequalification process and, prior to the Act, had developed an efficient and effective procurement process that combined evaluation of bidder qualifications and technical proposals in one single phase. It is our experience that the number of firms indicating interest in bidding rarely exceeds the shortlist maximum and therefore the shortlisting process is not needed.

SDA also recommends revisions to the law's provision that allows a bidder to withdraw a bid any time prior to acceptance. Allowing bidders to withdraw proposals until the time of "acceptance" (as defined in the Act) means that bidders can withdraw bids without consequence, for any reason or no reason, well after the commencement of review and scoring of technical proposals, and well after the opening of price proposals, and even past the time of recommendation of award by the agency. This is inconsistent with existing state procurement law. Further, setting the deadline for withdrawal at a time after the submission of proposals would negate the value and purpose of requiring a bid bond.

Finally, the Act defines the parameters of the technical review selection committee very narrowly. For instance, the Act does not allow the School District in which a project will be constructed to serve as a voting member of the committee. SDA recommends amendments to the Act which would allow the selection committee to be comprised of those representatives deemed necessary to the process. The modification should allow the participation of a representative of an SDA school district, as required by SDA's authorizing statute. This would allow for the unique perspective of the School District, a prime stakeholder in the project, to be included in the selection process.