

September 2023 Traffic Report

AVIATION DEPARTMENT (Data As Of 11/1/2023 3:08:02 PM)

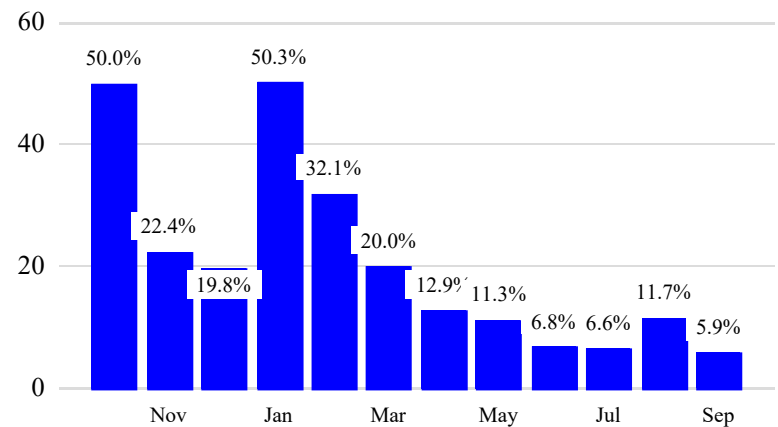
REGION



Revenue Passengers

	Curr Month	% Change
	11,849,565	5.9% ▲
Domestic	7,545,010	0.5%
International	4,304,555	17.0%
Non-Revenue	303,612	4.2%
Load Factors		
	Curr Month	
Domestic	79.9%	80.5% Avg Load Factor
International	81.6%	

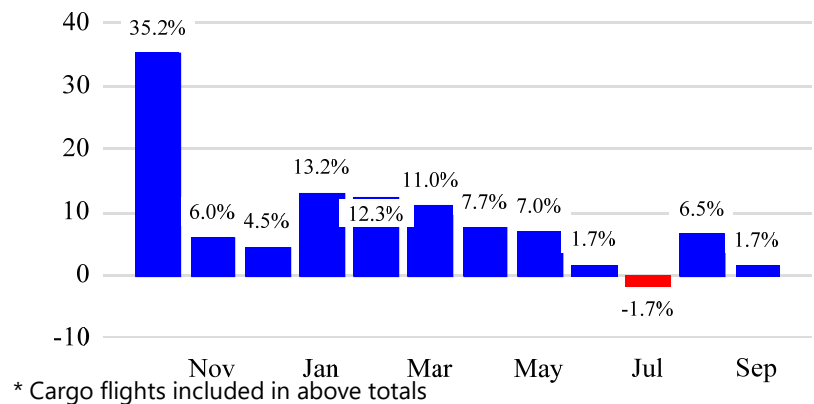
Year over Year % Change in Revenue Passengers - 12 Months



Total Flights

	Curr Month	% Change
	104,738	0.9% ▲
Excl GA	99,186	1.7% ▲
Domestic	72,742	-3.7%
International	26,444	19.9%
Gen Aviation	5,552	-11.1%
Cargo Flights*	3,237	-1.3%

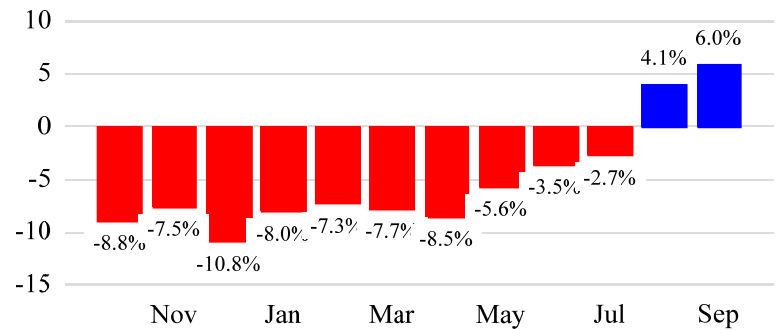
Year over Year % Change in Total Flights (Excl GA) - 12 Months



Cargo (Short Tons)

	Curr Month	% Change
	199,923	6.0% ▲
Domestic	83,994	3.2%
International	115,929	8.1%
Mail	7,195	-37.1%

Year over Year % Change in Cargo - 12 Months



Top 5 Declines in Revenue Passengers by Airline

Airline	Pax Decline	% Decline
JETBLUE AIRWAYS	(189,294)	-11.0%
AMERICAN	(168,380)	-11.0%
PORTER AIRLINES	(8,619)	-21.0%
SINGAPORE AIRLINES	(8,378)	-21.0%
SOUTHWEST AIRLINES	(7,212)	-3.0%

Top 5 Increases in Revenue Passengers by Airline

Airline	Pax Increase	% Increase
UNITED	400,121	16.0%
DELTA	198,705	8.0%
AIR CANADA	39,986	32.0%
BRITISH AIRWAYS	35,476	30.0%
Avianca	27,765	115.0%

September 2023 Traffic Report

AVIATION DEPARTMENT (Data As Of 11/1/2023 3:08:02 PM)

REGION



Airport Summary Statistics

JFK Summary

	Current Month	YoY %
Total Revenue Pax	5,209,784	4.0
Total Flights Including GA	39,458	1.0
Total Cargo (Short Tons)	139,883	11.5

EWR Summary

	Current Month	YoY %
Total Revenue Pax	4,026,639	11.0
Total Flights Including GA	34,577	9.0
Total Cargo (Short Tons)	57,575	-4.7

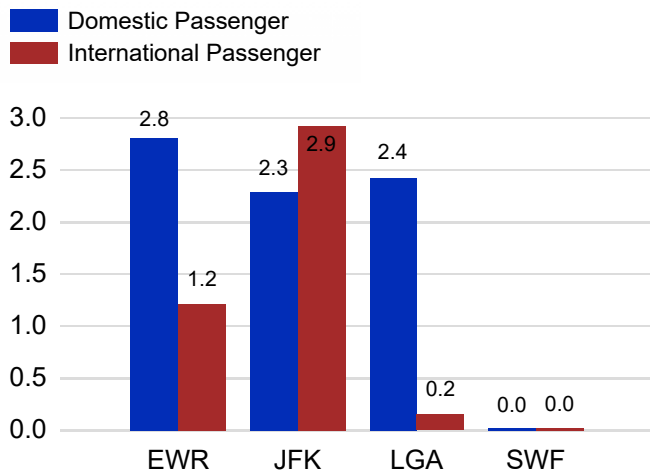
LGA Summary

	Current Month	YoY %
Total Revenue Pax	2,594,309	0.0
Total Flights Including GA	28,629	-7.0
Total Cargo (Short Tons)	489	-9.8

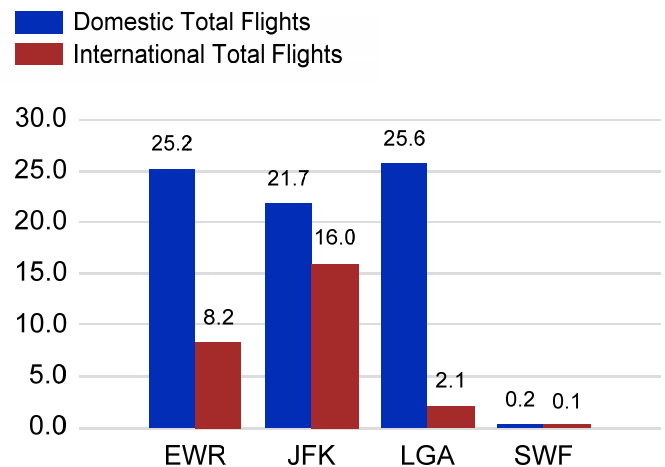
SWF Summary

	Current Month	YoY %
Total Revenue Pax	18,833	-19.0
Total Flights Including GA	2,074	-21.0
Total Cargo (Short Tons)	1,976	-9.9

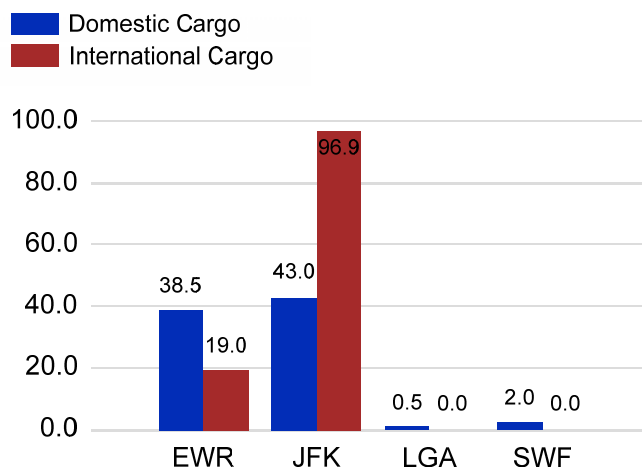
Total Passengers by Airport (Millions)



Total Flights by Airport (Thousands)



Total Cargo by Airport (Thousands of Short Tons)



12 Months Ending Passenger & Freight Statistics

Top 20 Airlines Ranking by Passengers & Freight: 12 Months Ending Sep 2023

Airline Name	Domestic	International	Total Pax	% of Tot	Airline Name	Short Tons	% of Tot
UNITED	27,278,553	7,984,630	35,263,183	24.76%	FEDERAL EXPRESS	372,616	16.49%
DELTA	26,476,123	6,135,875	32,611,998	22.90%	UNITED PARCEL	195,231	8.64%
JETBLUE AIRWAYS	15,894,503	6,545,925	22,440,428	15.76%	UNITED	179,047	7.92%
AMERICAN	13,961,287	3,634,967	17,596,254	12.36%	DELTA	99,794	4.42%
SPIRIT AIRLINES	4,526,037	0	4,526,037	3.18%	KALITTA AIR LLC	94,597	4.19%
SOUTHWEST AIRLINES	3,123,714	0	3,123,714	2.19%	AMERICAN	85,455	3.78%
ALASKA AIRLINES	2,435,509	0	2,435,509	1.71%	AIR TRANSPORT INT'L.(BAX Inc.)	74,157	3.28%
AIR CANADA	0	1,712,190	1,712,190	1.20%	ATLAS AIR	67,215	2.97%
BRITISH AIRWAYS	0	1,609,091	1,609,091	1.13%	ABX AIR INC	52,848	2.34%
AIR FRANCE	313	1,200,453	1,200,766	0.84%	BRITISH AIRWAYS	52,299	2.31%
EMIRATES AIRLINES	0	1,089,068	1,089,068	0.76%	KOREAN	49,699	2.20%
VIRGIN ATLANTIC	0	1,000,756	1,000,756	0.70%	CARGOLUX AIRLINES	48,559	2.15%
Avianca Costa Rica	0	851,577	851,577	0.60%	CHINA AIRLINES (CAL)	46,188	2.04%
LUFTHANSA	0	846,388	846,388	0.59%	CATHAY PACIFIC	45,622	2.02%
AER LINGUS	0	743,351	743,351	0.52%	VIRGIN ATLANTIC	35,948	1.59%
TURKISH AIR	0	739,738	739,738	0.52%	LUFTHANSA CARGO	32,425	1.43%
EL AL	76	575,966	576,042	0.40%	ASIANA	31,306	1.39%
LAN AIRLINES	0	547,457	547,457	0.38%	AIR CHINA (CARGO)	30,046	1.33%
IBERIA	0	544,834	544,834	0.38%	AIR FRANCE	29,599	1.31%
SAS	0	536,772	536,772	0.38%	EVA	29,365	1.30%

Passengers & Freight by Market - 12 Months Ending

Market	Passengers	Freight (Short Tons)
TRANSATLANTIC	26,037,846	837,696
CANADA	4,099,491	8,104
CARIBBEAN + BERMUDA	8,316,654	11,801
CENTRAL AND SOUTH AMERICA	4,237,438	60,145
DOMESTIC	92,280,833	953,853
MEXICO	2,426,923	12,053
TRANSPACIFIC	2,528,388	368,368
PUERTO RICO	2,493,508	8,205

September 2023 Traffic Report

AVIATION DEPARTMENT (Data As Of 11/1/2023 3:08:02 PM)

REGION



Additional Data

Airline Schedules (ADI): Non-Stop Destinations

	Region	Flights (Daily)	Cities
Domestic	Domestic	2417.9	112
	Puerto Rico	29.8	3
	Total	2,447.6	115.00
International	Canada	192.7	8
	Caribbean & Bermuda	140.8	22
	Central & South America	69.2	15
	Mexico	37.0	6
	Transatlantic	397.2	66
	Transpacific	36.3	11
	Total	873.2	128.00
Total		3,320.8	243.00

Airline Schedules (ADI): Carriers & Aircraft Type

	Aircraft Type	Flights (Daily)	Carriers
Domestic	Commuter	912.3	4
	Narrow Body	1480.0	10
	Wide Body	55.3	4
	Total	2,447.6	18.00
International	Commuter	161.7	5
	Narrow Body	308.6	22
	Wide Body	402.9	58
	Total	873.2	85.00
Total	Total	3,320.8	103.00

Passenger Demographics (ACI ASQ Surveys - 2021)

Connect		Trip Type		Gender	
Local Origin/Destination	78.6%	Business	14.0%	M	49.6%
Connecting	21.4%	Leisure	86.0%	F	50.4%
Transport Mode		Annual Flights		Residency	
Bus/Shuttle	4.7%	1-2	61.5%	United States	81.0%
Other	18.7%	3-5	24.9%	Other	19.0%
Private/Company Car	37.5%	6-10	9.0%		
Rail/Subway	7.3%	11-20	2.8%		
Rental Car	4.6%	21+	1.8%		
Taxi/Limo	27.2%				

Ground Transportation

	Curr Month	% Change		Curr Month	% Change
<i>Paid Parked Cars</i>	322,780	-11.5	<i>Total Air Train Passengers</i>	2,554,295	7.2
<i>GTC Bookings</i>	0		<i>Paid Howard Beach Passengers</i>	126,225	-8.0
<i>Airport Coach Passengers</i>	33,532	1.0	<i>Paid Jamaica Passengers</i>	468,704	-8.3
<i>Taxis Dispatched</i>	354,842	-6.3	<i>Paid EWR Passengers</i>	217,986	1.6
			<i>On-Airport (Unpaid) Passengers</i>	1,741,380	14.6

Airlines for American Carriers (USA)

	Curr Month	% Change
<i>Freight:revenue ton miles (000)</i>	0	

Regional Airports: Other

	Curr Month	% Change
<i>TEB flight movements</i>	15,494	-7.6
<i>ISP Total passengers</i>	88,935	19.7
<i>HPN Total passengers</i>	157,894	5.3