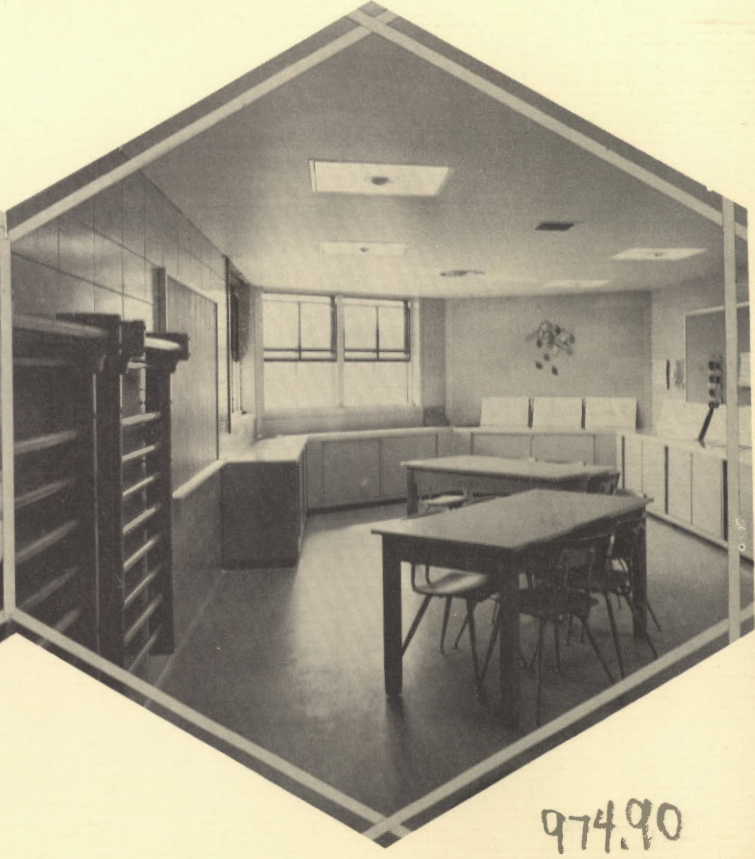
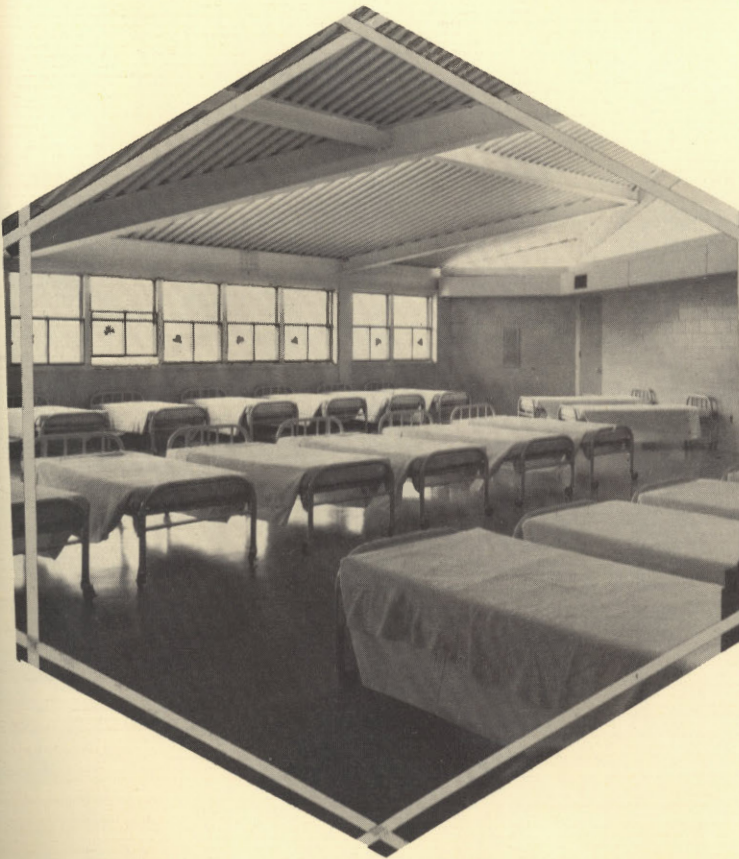
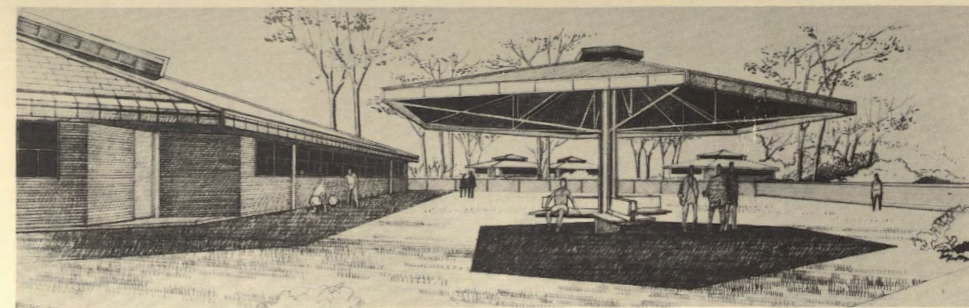
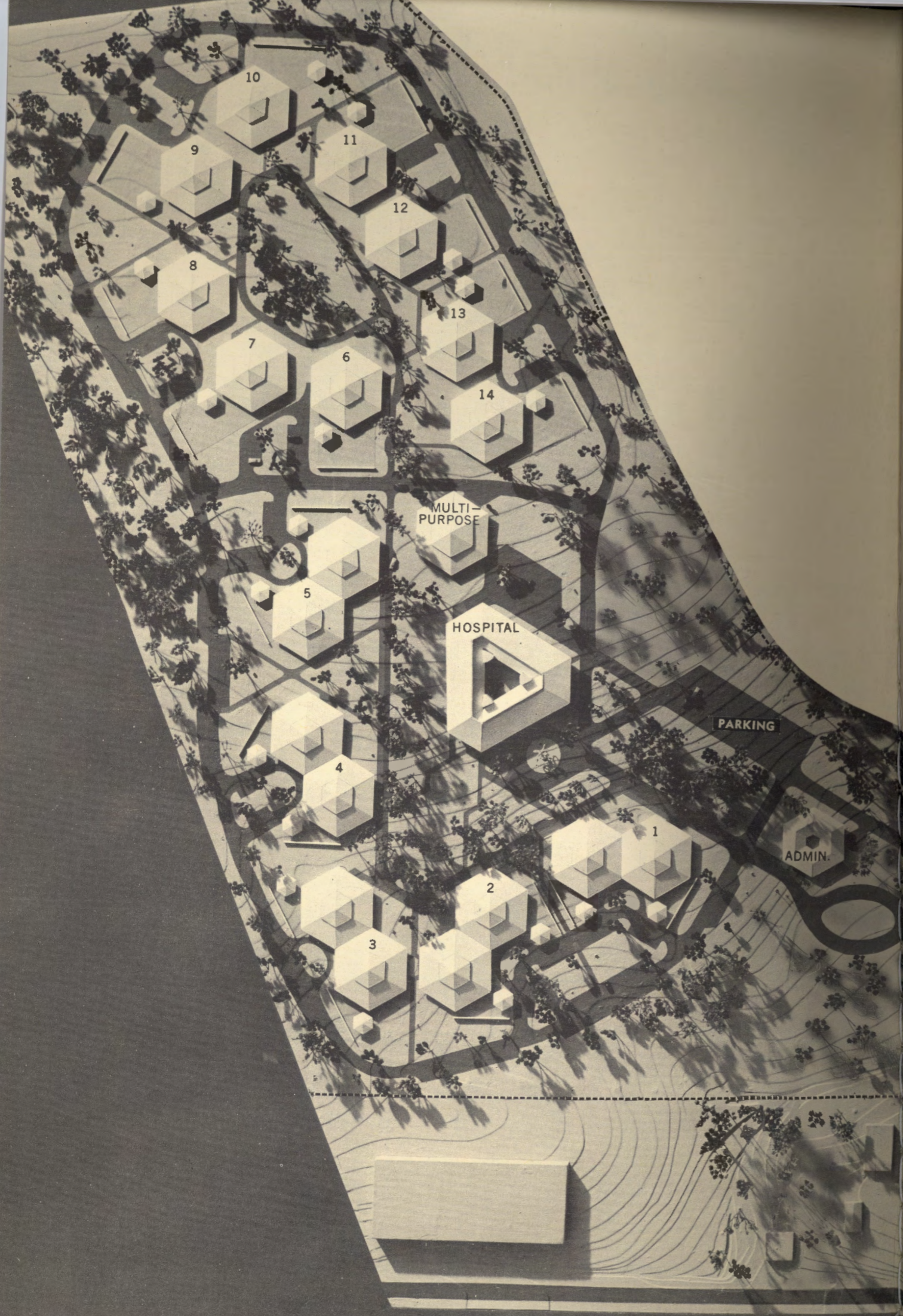


WOODBIDGE STATE SCHOOL

3



974.90
I 52
1965b
copy 1



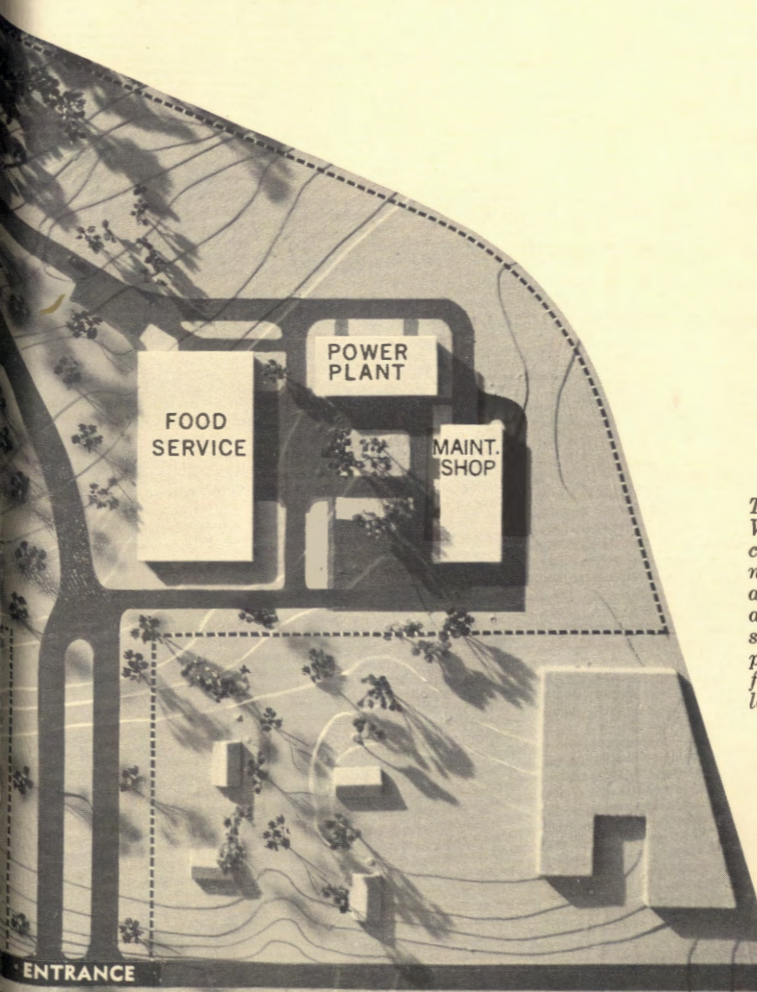
Each unit has its own individual play area.

THE WOODBRIDGE STATE SCHOOL is New Jersey's newest institution for severely retarded boys and girls who will require a lifetime of care and training scaled to their limited degree of intelligence and ability.

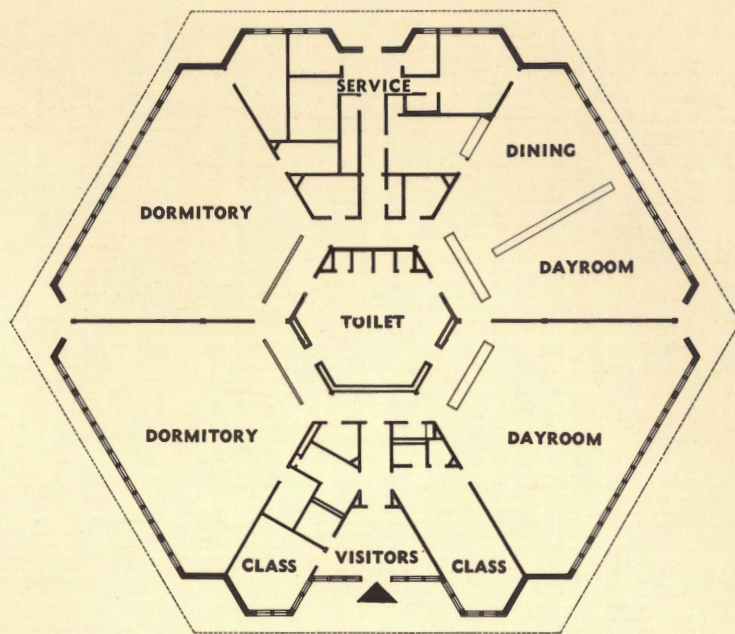
It was designed to create a home-like environment where each child will receive close attention. The goal of the architect, therefore, was to create a place of residence that would not only provide for basic, daily living needs, but also approximate the closeness, warmth and reassurance of family.

To achieve this feeling, Woodbridge was conceived as a closely-knit residential community. Institutional atmosphere was avoided by the creation of cottages, identical to each other in appearance and providing services for both ambulatory and bedfast residents. There are nineteen of these housing 1,000 residents.

The location of the school in metropolitan New Jersey makes it easily accessible to parents who formerly had to travel long distances to visit their children.

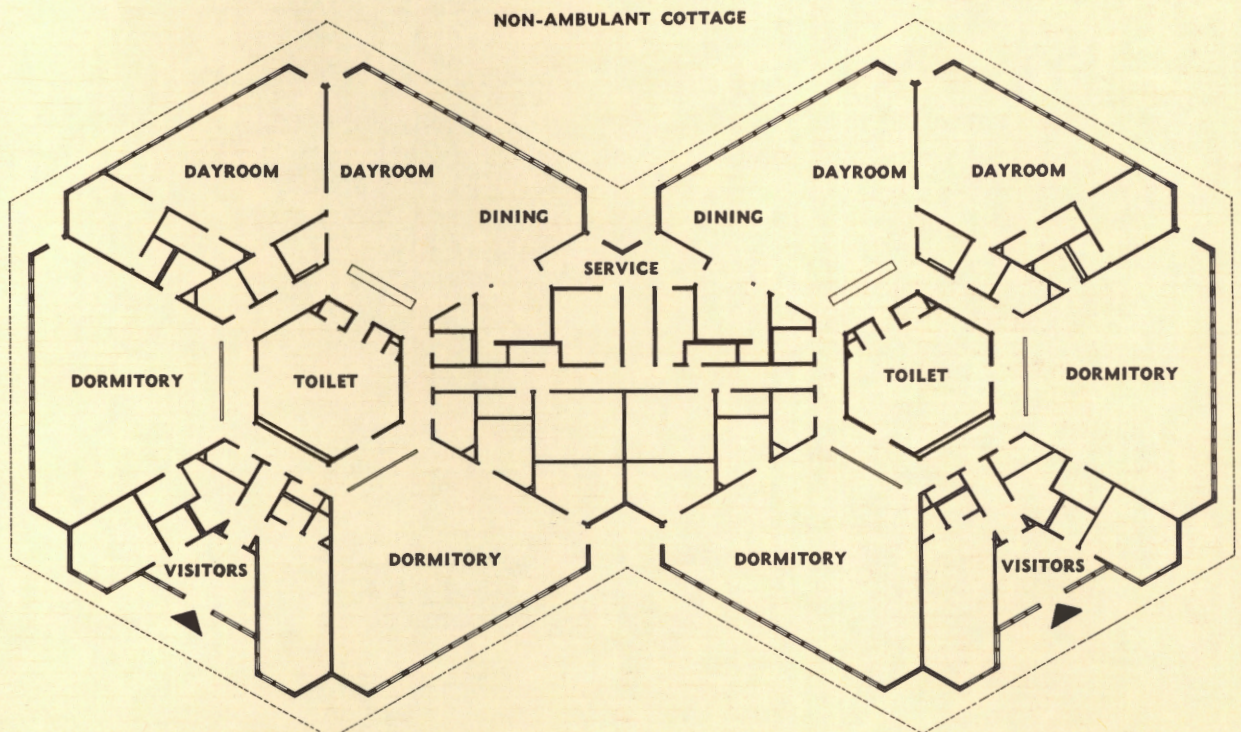


The dominant hexagonal design of the Woodbridge cottages is reflected on the cover by the single and double figures denoting buildings for ambulant and non-ambulant residents. Top: exterior view of a typical cottage; bottom: dormitory for sleeping, left, and classroom, right. On this page, buildings numbered 1 through 5 are for non-ambulant, 6 through 14, for ambulant residents.



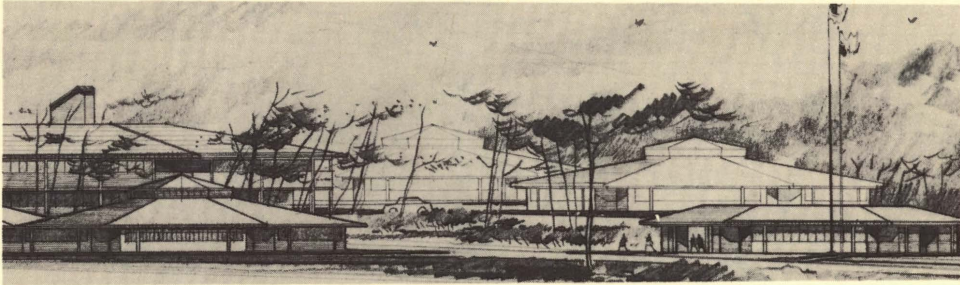
AMBULANT COTTAGE

The life of each resident revolves around his cottage. Division of residents into small cottage-families of fifty persons each makes it possible to group them by sex and age level and also on the basis of their physical and emotional needs. The hexagonal cottage plan permits efficient space allotment into six triangular segments, each opening into the central core which contains washroom and toilet facilities. The variety of dayrooms, schoolrooms, dining and dormitory rooms permits division of residents into groups as small as ten for therapy, training classes and other activities. Staff and service facilities are closely grouped within the plan for most effective supervision of every area. Cottages for non-ambulatory residents are linked in pairs for still more concentrated care by staff. Both cottage types have a visitors lounge near the entrance for use by parents.



NON-AMBULANT COTTAGE

dedicated to the training, care
and protection of the eternal child



The hexagonal plan of buildings at Woodbridge gives a human scale to the individual structures and an interestingly varied character to the campus landscape. Pyramidal roofs, which conceal the mechanical systems of each cottage, enhance the residential atmosphere and unify the separate elements of the village. Other campus elements are:

ADMINISTRATION BUILDING. Set at the head of the entrance drive, this is the school's reception and admissions center. Its offices ring an open court.

ACTIVITY BUILDING. Designed to serve as chapel, school and recreation center for the residents.

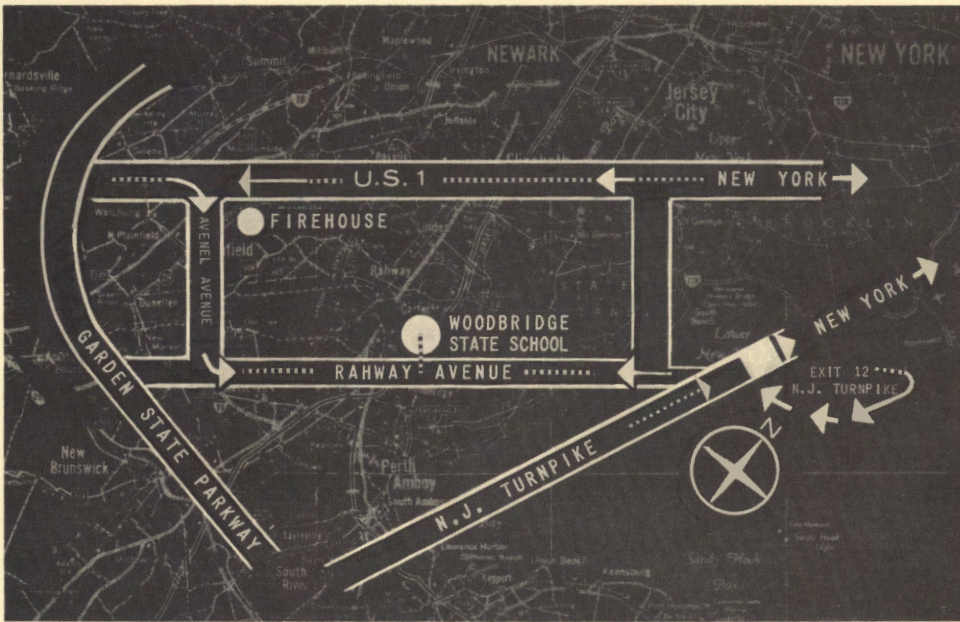
CLINIC-HOSPITAL. Purposefully different in plan, the 100-bed facility is a two-story, triangular structure with a central open courtyard. It serves as diagnostic center and research laboratory and is equipped for all routine medical services which residents may require, except major surgery.

FOOD SERVICE. A separate building is equipped to prepare more than 1,000 meals three times daily. These are transported in electrically heated carts to pantries in each cottage and the hospital for direct service to residents.

SERVICE BUILDING. This houses maintenance and security equipment.

POWER PLANT. All buildings at Woodbridge have been designed for maximum safety and durability, with low maintenance and cleanliness assured through use of terrazzo flooring and glazed structural tile walls throughout. They are of fireproof steel and concrete construction, with brick outer walls enclosing an insulating cavity for the greatest weather protection. Tinted glass windows give clear views of the outdoors while eliminating sun glare.





Travel Directions

From U. S. 1 going north, turn right at Avenel Firehouse (going south, turn left) on Avenel Street, continuing to Rahway Avenue. Turn left on Rahway Avenue and proceed about one-half mile to entrance on left.

Also Exit 12 on N. J. Turnpike. Roosevelt Avenue to Rahway Avenue. Follow to entrance on right.

Admission

Questions about admission should be directed to the Division of Mental Retardation, 135 West Hanover Street, Trenton, New Jersey 08625.

WOODBRIDGE STATE SCHOOL
STATE OF NEW JERSEY
DEPARTMENT OF INSTITUTIONS AND AGENCIES

Woodbridge, New Jersey

Dedicated May 8, 1965

RICHARD J. HUGHES, GOVERNOR

President, State Board of Control	LLOYD B. WESCOTT
Commissioner, State Department of Institutions and Agencies	LLOYD W. McCORKLE
Director, Division of Mental Retardation	MAURICE G. KOTT
Superintendent, Woodbridge State School	HARRY VON BULOW

Associated Architects	VINCENT G. KLING AND ASSOCIATES DIEHL AND STEIN
-----------------------	--

Structural Engineers	SEVERUD ASSOCIATES
----------------------	--------------------

Mechanical-Electrical Engineers	VOGELBACH AND BAUMANN
---------------------------------	-----------------------

Food Service Consultant	MAX STITZER
-------------------------	-------------

General Contractor	FRANK BRISCOE COMPANY
--------------------	-----------------------