
**New Jersey Pinelands Commission
Long-Term Economic Monitoring Program**

Pinelands Population Reference Guide



James J. Florio, Chairman

John C. Stokes, Executive Director

August 2004

**NEW JERSEY PINELANDS LONG-TERM ECONOMIC
MONITORING PROGRAM
*PINELANDS POPULATION REFERENCE GUIDE***

August 2004

THE NJ PINELANDS COMMISSION

The Honorable James J. Florio, Chair

Alan W. Avery, Jr., Vice Chair

Candace Ashmun

William J. Brown

Dr. Guy Campbell Jr.

Leslie M. Ficaglia

Hon. Robert Hagaman

Stephen V. Lee III

Edward Lloyd

Robert W. McIntosh Jr.

Patrick G. Slavin

Norman F. Tomasello

Betty Wilson

Francis A. Witt

Edward A. Wuillermin, Jr.

John C. Stokes, Executive Director

Larry L. Liggett, Land Use and Technology Program Director

Frank Donnelly, Economic Planner

Pinelands Commission
P.O. Box 7
New Lisbon, NJ 08064
(609) 894-7300
<http://www.nj.gov/pinelands>

Acknowledgments

The Pinelands Population Reference Guide is a component of the Pinelands Commission Long-Term Economic Monitoring Program. The guide was prepared by Pinelands Commission Economist Frank Donnelly.

The guide will be available for free from the Pinelands Commission's web site at <http://www.state.nj.us/pinelands>.

The guide is also available from the Pinelands Commission free of charge on CD-ROM. Requests can be mailed to:

The Pinelands Commission
P.O. Box 7
New Lisbon, NJ 08064

Requests can also be made via phone at (609) 894-7300 or email at economist@njpines.state.nj.us

In addition, the Pinelands Population Reference Guide is available for review at the following libraries on CD-ROM:

Alexander Library, Rutgers University, New Brunswick
The New Jersey State Library, Trenton
The Stockton State College Library, Pomona
The Burlington County College Library, Pemberton

For more information, please contact the Pinelands Commission at (609) 894-7300.

NJ Pinelands Commission Long-Term Economic Monitoring Program Population Reference Guide

Table of Contents

Introduction / Geographic Scale	1
Population Summary – Population Change in South Jersey 1970 - 2000	2
Section 1 – Population at Regional and County Level	8
Section 2 – Population at Municipal Level.....	11
Section 3 – Population at Census Tract Level	17
Section 4 – Population at Census Block Group Level	26
Section 5 – Population at Census Block Level.....	29
Section 6 – Population Density.....	38
Section 7 – Households and Housing Units.....	41
Section 8 – Acreage.....	50
Section 9 – Population Estimates.....	54
Section 10 – Maps	57

List of Tables and Figures

Table 1.1 – Population Change for New Jersey and Southern New Jersey	9
Table 1.2 – Population Change for Southern New Jersey Counties	9
Table 1.3 – County Share of South Jersey’s Total Population	10
Table 1.4 – County Share of South Jersey’s Net Population Growth.....	10
Table 2.1 – Population Change for Pinelands Municipalities	12
Table 2.2 – 2000 Group Quarters Population for Pinelands Municipalities	13
Table 2.3 – Group Quarters Component of Pinelands Municipal Population Change	14
Table 2.4 – Corrected Census 2000 Population and Group Quarters Population for Pinelands Municipalities	15
Table 2.5 – Population Change for Pinelands and Non-Pinelands Aggregates.....	16
Table 3.1 – Population Change for Pinelands Municipal Census Tract Aggregates Inside and Outside the Pinelands Boundary.....	18
Table 3.2 – Population Change for Pinelands Municipal Census Tracts Inside the Pinelands Boundary.....	19
Table 3.3 – Group Quarters Component of Pinelands Municipal Census Tracts Inside the Pinelands Boundary	22
Table 3.4 – Pinelands (Census Tract) Share of County Population.....	24
Table 3.5 – Pinelands (Census Tract) Share of County Net Population Growth	24
Table 3.6 – County Share of Pinelands (Census Tract) Total Population.....	24
Table 3.7 – Population Change for Pinelands Portion (Census Tract) of Southern NJ Counties	25
Table 4.1 – Pinelands Census Block Group Population	27
Table 4.2 – 2000 Population for Pinelands Municipalities Inside and Outside the Pinelands Boundary (Census Block Group).....	28
Table 5.1 –Population Change for Pinelands Census Block Aggregates Inside and Outside the Pinelands Boundary	30
Table 5.2 – Pinelands (Census Block) Share of Population Change for Southern New Jersey Counties	30
Table 5.3 – Pinelands (Census Block) Share of Population and Net Population Growth for Southern New Jersey Counties.....	30
Table 5.4 – 2000 Population (Census Block) for Pinelands Municipalities Inside/Outside the Pinelands Boundary.....	31

Table 5.5 – 1990-2000 Population Change (Census Block) for Pinelands Municipalities Inside/Outside the Pinelands Boundary	32
Table 5.6 – Population and Housing for Pinelands RGAs, Towns, and Villages	33
Table 6.1 – Population Density for Southern New Jersey Counties	39
Table 6.2 – Population Density for Pinelands Municipalities	40
Table 7.1 – Households for Southern New Jersey Counties	42
Table 7.2 – Housing Units for Southern New Jersey Counties.....	42
Table 7.3 – Persons Per Household for Southern New Jersey Counties.....	43
Table 7.4 – Households for Pinelands Municipalities	44
Table 7.5 - Housing Units for Pinelands Municipalities	45
Table 7.6 – 2000 Housing Units for Pinelands Municipalities Inside and Outside the Pinelands Boundary (Census Block Group).....	46
Table 7.7 – Households and Housing Units for Pinelands Municipalities Inside and Outside the Pinelands Boundary (Census Blocks) 2000	47
Table 7.8 – Year Structure Built as of 2000 (Census Block Group) by Region.....	48
Table 7.9 – Year Structure Built as of 2000 (Census Block Group) by County.....	48
Table 7.10 – Year Structure Built as of 2000 by Pinelands Municipal Census Block Groups Inside and Outside the Pinelands Boundary	48
Table 7.11 – Year Structure Built as of 2000 by Pinelands Municipality	49
Table 8.1 – Acreage by County for Pinelands and Non-Pinelands	51
Table 8.2 – Acreage and Management Area Acreage for Pinelands Municipalities	52
Table 9.1 – Population Estimates 2000 - 2002	55
Table 9.2 – County Level Population Estimates 2000 - 2002	55
Table 9.3 – Population Estimates 2000 – 2002 by Pinelands Municipality	56
Figure 10.1 – 2000 Population for Southern New Jersey Counties.....	58
Figure 10.2 – Municipalities of South Jersey	59
Figure 10.3 – Municipal Population Change for Southern New Jersey 1990 – 2000	60
Figure 10.4 – South Jersey Population Change 1980-1990 and 1990-2000 by Census Tract.....	61
Figure 10.5 – Pinelands Population Change (With Split Towns) 1980-1990 and 1990-2000 by Census Tract.....	62

Figure 10.6 – Pinelands Municipal Census Tracts Inside the Pinelands Boundary	63
Figure 10.7 – Pinelands Population Change 1980-1990 and 1990-2000 by Census Tract Inside Boundary	64
Figure 10.8 - Pinelands Municipalities and Management Areas	65
Figure 10.9 – Pinelands RGAs, Towns, and Villages	66

Introduction

This reference guide consolidates population data from the 1970 to 2000 Census for Southern New Jersey (also referred to as South Jersey) and the Pinelands into one document. The Pinelands component of Southern New Jersey's population was calculated at the regional, county, municipal, tract, block group, block, and Pinelands management area levels. The primary purpose of this document is to serve as a reference source and not as an analysis of population change in and of itself.

A brief description of Southern New Jersey regional and county population trends is followed by a county by county summary. Reference tables and maps are included after the summary and are arranged in geographic order from smallest scale (South Jersey) to largest scale (Pinelands Growth Areas). Following the population tables are reference tables for population density, households, housing units, land area, and population estimates.

Geographic Scale

South Jersey: an aggregate of the eight southernmost counties of New Jersey: Atlantic, Burlington, Camden, Cape May, Cumberland, Gloucester, Ocean and Salem. All of these counties except Salem are partially located in the state-designated Pinelands area.

Pinelands Municipalities: an aggregate of all municipalities that have at least ten percent of their land within the state designated Pinelands area. Municipalities with less than ten percent of their land in the Pinelands in the eight county South Jersey region comprise the Non-Pinelands aggregate. There are 47 municipalities in the Pinelands and 155 outside the Pinelands. This aggregate is typically used in the Long-Term Economic Monitoring Program's Annual reports. Tables in this reference guide that display population data at the municipal level also include municipalities that have between one and ten percent of their land in the Pinelands (an additional five municipalities, for a total of 52).

Pinelands Census Tracts: all census tracts that have their geographic center within the state-designated Pinelands boundary. In a few instances, certain tracts that did not have their center within the boundary were added to the aggregate. Census tracts are better than municipalities for measuring the true population of the Pinelands area, as several municipalities are split by the boundary and thus may include a large number of residents that live outside the Pinelands boundary. While the use of census tracts with geographic centers in the Pinelands yields more accuracy, they are not completely accurate. Areas of municipalities or entire municipalities are excluded (i.e. Buena, Little Egg Harbor, Ocean Twp) while some areas outside the Pinelands are included (i.e. in Estell Manor, Lacey, Medford, Maurice River). Tracts were normalized to 2000 census tract boundaries to account for changes in boundaries over time. Data from the 1970 Census for Ocean and Cape May counties is not available at the tract level as these counties were not divided into census tracts at that time.

Pinelands Census Block Groups: all census block groups with their geographic center within the state-designated Pinelands boundary. In a few instances, certain tracts that did not have their center within the boundary were added to the aggregate. Census block groups are smaller than tracts and thus are better than tracts for measuring the

true population of the Pinelands area. Block groups are larger than blocks and thus are not as accurate as the blocks. Block group level data is advantageous because it is the smallest level of census geography that has the highest level of information available, from the short and long form. The disadvantage of block group level data is the limitation of data to the 2000 Census (pre 2000 information exists but was not available for publication in this document).

Pinelands Census Blocks: all census blocks with their geographic center within the state-designated Pinelands boundary. Census blocks are smaller and more accurate than census tracts and block groups for measuring the true population of the Pinelands area. For instance, several tracts are large enough that they include population living outside the boundary while other tracts exclude residents inside the boundary. A comparison between the 2000 Census block and tract analysis reveals a difference of approximately 23,000 residents with blocks being the lower, more accurate count. A disadvantage of census blocks is that the data is available for 1990 and 2000 only. Blocks were normalized to 2000 census block boundaries to account for changes in boundaries since 1990.

Pinelands Growth Areas: the population of the Pinelands area is concentrated in areas designated to absorb growth. Growth areas were designated in 1980 based on past and prevailing trends at the time, and upon the presence or lack of sewer services. Regional Growth Areas, Pinelands Towns, and Pinelands Villages are the three management areas that are predominantly sewered and designated to absorb growth.

Management area boundaries usually do not correspond with census divisions or other political boundaries. Census blocks were overlaid on management areas and the population of census blocks that had their center in each selected growth area were counted as being part of that growth area. In some cases, manual selection was used for better approximation. The goal was to estimate the population of each growth area strictly defined by its boundary, not to estimate clusters of population (i.e. the growth area surrounded by a "hinterland" of residents in surrounding areas). The results are meant to be illustrative. A rough estimate of accuracy was calculated by subtracting the total area of the census blocks counted within each management area from the actual area of the management area. The approximation of population for regional growth and town areas can be considered fairly accurate, while the approximations for the villages should be viewed with caution. Typically, portions of management areas that were excluded from the population count were located at the edge of the management area where the population is smaller (relative to the center of the management area). Since villages are smaller in area and population, the effects of excluding blocks partially located within the management area were greater.

Population Change in South Jersey 1970 – 2000

The State of New Jersey has a population of 8.4 million according to the 2000 Census. The population has grown at an increasing rate for the past three decades, from three percent in the 1970s, to five percent in the 1980s, to nine percent in the 1990s. Southern New Jersey's share of the state's total population grew from 22% in 1970, to 25% in 1980, to 27% in 1990. Southern New Jersey's share of the state's population remained at 27% in 2000. Southern New Jersey's share of the state's net population growth has declined since 1970. South Jersey was responsible for 100% of the state's net growth between 1970 and 1980 due to population declines in North Jersey. South

Jersey's share of net population growth fell to 63% for the 1980s and to 26% for the 1990s, as population growth in the north accelerated. The population of South Jersey was 2.3 million in 2000.

Population growth varied by county, but most counties followed the general trend of higher growth rates in the 1980s compared to the 1990s. Camden, Ocean, and Burlington were the most populous counties in 2000, while Ocean, Atlantic, and Gloucester experienced the highest growth rates between 1990 and 2000. Ocean County's share of South Jersey's population has increased significantly from 13% in 1970 to 23% in 2000 while Camden's share has steadily declined from 29% to 23% during the same period. The majority of net population change during 1990s occurred in Ocean County (43%), with Atlantic and Burlington in second place with 16% of South Jersey's net change apiece. Salem County was the only county in the region that experienced a net population loss between 1990 and 2000.

Population Change in the Pinelands 1970 - 2000

The Pinelands comprises slightly more than half the land area of the Southern New Jersey region but contains just over a quarter of Southern New Jersey's population. There were 616,000 people in Pinelands municipalities compared to 1.6 million in the Non-Pinelands municipalities in 2000. Population growth in the Pinelands municipalities has decreased from 59% in the 1970s to 30% in the 1980s, to 12% in the 1990s. Population change in the Non-Pinelands was much lower, nine percent during the 1970s and seven percent during the 1980s and the 1990s.

Many of the residents of Pinelands municipalities actually live outside the Pinelands boundary. Using census tract data, it was calculated that 299,000 residents of Pinelands municipal census tracts lived inside the Pinelands boundary in 2000, while the remaining 317,000 lived outside (outside the boundary but inside a Pinelands municipality). The inside tract population represented the majority of the Pineland's total municipal population in 1980 and 1990 (56% and 51% respectively) but this changed in 2000 when the inside percentage fell to 49%. The 1980s were a decade of higher growth for both inside and outside tracts than the 1990s. The outside population outpaced growth inside in both decades (growth during the 1990s was 6.5% for inside tracts and 17.9% for outside tracts).

Census block data provides a more precise measure of Pinelands population. Using census block data, it was calculated that 277,000 people lived inside the Pinelands boundary in 2000, while 412,000 lived in census blocks in Pinelands municipalities that were outside of the boundary.¹ The population inside the Pinelands boundary grew by 5.5% during the 1990s, compared to 14% in blocks outside of the boundary but inside Pinelands municipalities.

Over sixty percent of the 277,000 residents who live inside the Pinelands boundary live in designated growth areas. Approximately 125,000 (45%) live in Regional Growth Areas, 31,000 (11%) live in towns, and 14,000 (5%) live in villages. The

¹ Fifty-two municipalities rather than 47 are included in this calculation due to a higher degree of precision, since the census blocks are small enough that areas within the five municipalities that have between one and ten percent of their land in the Pinelands can be counted.

population of Regional Growth Areas (RGAs) increased by 12% during the 1990s, while towns grew by 4%. The population of the villages remained relatively unchanged.

On a county basis 33% of all Pinelands residents lived in Burlington County, 28% lived in Atlantic, and 18% lived in Ocean in 2000. Ratios for the remaining counties ranged from two to nine percent. The county share of net growth in Pinelands population is highly concentrated. Ocean (49%) and Atlantic (48%) counties absorbed the overwhelming majority of net population increase between 1990 and 2000, adding approximately 11,500 new residents each in the Pinelands. Cape May and Cumberland had small population increases while Camden and Gloucester had small decreases. The Pinelands population in Burlington County fell by five percent because of military base reductions. A description of the patterns of Pinelands population change for each county follows.

Atlantic County

Municipalities in the eastern portion of the county, particularly Brigantine, Egg Harbor Township, Galloway, and Hamilton, experienced the highest growth rates in Atlantic County in the 1990s. These municipalities are part of the outer ring of the Atlantic City metro area and have been influenced by growth in the casino industry there.

The Pinelands share (Census Tract) of Atlantic County's population has increased steadily from 25% in 1970 to 34% in 2000. The Pinelands share (census tract) of the county's net growth fell from 44% in the 1980s to 41% for the 1990s. Census tracts in Hamilton and Egg Harbor Township experienced some of the highest growth rates in South Jersey during the 1980s and 1990s. The population of the RGAs in these two townships plus Galloway township grew from 24,000 in 1990 to 32,000 in 2000. Pinelands tracts in the western part of the county experienced either slow growth or population loss.

Burlington County

Older, suburban municipalities in the western part of the county, closest to Philadelphia, experienced population loss during the 1990s. Municipalities in the eastern and southernmost portion of the county, in the heart of the Pinelands, have also experienced decline. A band of municipalities in-between these two areas have experienced rapid growth, as they have evolved as second ring suburbs of Philadelphia.

The Pinelands share (census tract) of Burlington County's population dropped to 23% in 2000, from 26% in 1980 and 1990. Census tracts in the Pinelands preservation areas all lost population, but the largest losses occurred in the military base townships of Pemberton, Wrightstown, and New Hanover. Much of the population loss in Burlington County can be attributed to changes in the military population and in the group quarters population (the group quarters count includes military personnel living in barracks, but does not account for personnel living in single family housing or off base housing). Woodland and Washington were also affected by changes in institutional group quarters population. Growth in the Pinelands in Burlington County did occur in tracts in Medford and Evesham in the 1980s and 1990s, but more growth occurred in tracts in these municipalities that were outside rather than inside the Pinelands. The population in the Burlington County RGAs dipped from 46,000 to 45,000 between 1990 and 2000, with most of the losses occurring in Pemberton Township.

Camden County

Many older, smaller, first ring suburban communities continued to lose population during the 1990s while larger municipalities in the second ring suburbs further from Camden and Philadelphia continued to grow.

The Pinelands share (census tract) of Camden County's population remained relatively unchanged from 1990 to 2000 at approximately 5.5%. Waterford and Chesilhurst both lost population, while Winslow had significant increases in two tracts inside the boundary. These changes were offset by declines in two other tracts also located within the boundary, but one of these tracts was affected by a change in the institutional group quarters population. The overall population change for the Camden RGAs during the 1990s was a modest increase of a few hundred residents, to a total of 16,000. The population of the Winslow RGA increased by 650 residents while the Waterford RGA experienced a decrease of 330 residents.

Cape May County

Most of the municipalities in Cape May experienced small to moderate growth during the 1980s and 1990s, with the exception of a few shore communities that had small losses. The Pinelands share (census tract) of Cape May County's population has remained relatively steady between 1980 and 2000 at approximately 7.5%. Population growth during the 1990s in the Pinelands municipalities of Dennis and Upper was greater outside the Pinelands than inside. Woodbine's population was relatively unchanged between 1990 and 2000.

Cumberland County

Population change within Cumberland County was uneven between 1990 and 2000 and the range of population change was large among the different municipalities. The Pinelands share (census tract) of county population remained relatively unchanged between 1990 and 2000 at five percent. Less than one percent of Vineland's population lives in the small area of the city that is within the Pinelands. The majority of the Pinelands population in Cumberland County is in Maurice River Township. Its population change is largely influenced by fluctuations in the institutional growth quarters population, as a large state correctional facility is located there. Of the 6,900 residents in the township, over 3,300 were prison inmates in 2000. The prison is located in the Pinelands and the increase in the prison population between 1990 and 2000 accounts for all of the population change in the township. The change in the census tract population for the township between 1990 and 2000 is skewed by the loss of population in two small tracts coupled with a large increase in the third, largest tract which comprises the majority of the township's land. It is uncertain whether these population changes were the result of error in the assignment of population to blocks or from the actual relocation of prison facilities.

Gloucester County

The older population centers of the county clustered closest to Philadelphia and Camden experienced population losses during the 1990s, while the second ring suburbs experienced some of the fastest growth in South Jersey. Woolwich Township was the fastest growing municipality in South Jersey, growing by 108% between 1990 and 2000.

The Pinelands municipalities at the eastern edge of the county experienced modest growth of 7 to 8%.

The Pinelands share of county population rose from 5.5% in 1970 to 8% in 1990, but fell to 7% in 2000. Growth in Monroe and Franklin largely occurred in census tracts outside the Pinelands. The population within Franklin's Pinelands census tract grew by 100 residents, while Pinelands tracts in Monroe lost population. The Monroe RGA lost 400 residents between 1990 and 2000, dropping to 10,800 residents.

Ocean County

All of the large municipalities of Ocean County with the exception of Eagleswood experienced moderate to rapid growth between 1990 and 2000, continuing a trend that has persisted since 1970. Stafford had one of the highest growth rates in South Jersey during the 1990s. Some of the smaller boroughs and resort towns experienced small population losses.

The Pinelands share (census tract) of county population held steady at 10% in 1980 and 1990 but grew to 11% in 2000. The Pinelands share (census tract) of the county's net population growth rose from 10% in the 1980s to 15% during the 1990s. Tracts in Stafford and Berkeley experienced the highest growth rates of Pinelands tracts in the county, while tracts affiliated with military installations in Plumsted experienced some losses. Some Pinelands municipalities experienced more growth in tracts inside the Pinelands (Manchester, Stafford), while other municipalities experienced more growth in tracts outside of the Pinelands (Barnegat, Jackson, Lacey, Plumsted). Ocean RGA's experienced rapid growth during the 1990s, growing from 12,000 residents in 1990 to 20,000 in 2000, an increase of 66%. The majority of this growth occurred in Barnegat and Stafford, while the remaining RGA's had little growth or experienced small losses. The Pinelands Town of Whiting also experienced significant growth, from 7,400 residents in 1990 to 9,000 in 2000.

Salem County

Population growth in Salem County during the 1990s was limited to municipalities in the northern part of the county, adjacent to Gloucester County. The majority of Salem's municipalities lost population, with the greatest losses concentrated in the most urbanized areas in the western part of the county, closest to Wilmington, Delaware. Salem County is completely outside of the Pinelands.

Population Density, Households, and Housing Units

The aggregate population density of the Pinelands municipalities was 304.4 persons per square mile in 2000, compared to 1,045.8 persons per square mile in the Non-Pinelands area. Trends in the increase of households and housing units are influenced by changes in population, but are also affected by changes in household size. Household sizes have been decreasing for all New Jersey counties since the 1970s. The average household size for the eight counties fell from 3.10 persons per household in 1970 to 2.60 in 2000. The number of persons per household in 2000 ranged from 2.36 in Cape May to 2.75 in Gloucester. Housing units in Southern New Jersey tend to be newer when compared to New Jersey as a whole. Within South Jersey, the Pinelands

has a greater percentage of recently constructed units (past thirty years) compared to the Non-Pinelands.

Population Estimates

Population estimates are created in non-census years to calculate population during those years. Estimates are calculated using birth and death rates and a factor for migration. Estimates are typically released each year for the preceding year (i.e. 2002 estimates were released in 2003). Estimates are often revised when a new estimate is released (i.e. estimates for 2001 and 2002 will be revised once a 2003 estimate is released). Once the next census is taken (2010), estimates for the previous decade will be re-adjusted to reflect the new census. Estimates are created by the NJ Department of Labor in consultation with the US Census Bureau.

The population of New Jersey grew by 2.1% between 2000 and 2002, adding almost 176,000 residents. New Jersey's growth was driven by natural increase and international migration. Although internal migration to the state was negative (more US residents moved out than in), the South Jersey region had a positive internal migration (more US residents moved in than out).

The Pinelands municipalities grew more quickly than the Non-Pinelands municipalities and the state, adding 28,400 residents for an increase of 4.6%. Sixteen percent of New Jersey's total population increase between 2000 and 2002 occurred in the Pinelands. Components of population growth (natural increase and migration) cannot be calculated for the Pinelands and Non-Pinelands as this information is not available below the county level.

Section 1 – Population at Regional and County Level

Table 1.1 Population Change for New Jersey and Southern New Jersey

	1970 Population	Change 1970 – 1980	Percent Change 70-80	1980 Population	Change 1980 – 1990	Percent Change 80-90	1990 Population	Change 1990 – 2000	Percent Change 90-00	2000 Population
New Jersey	7,171,112	193,046	2.7%	7,364,158	366,030	5.0%	7,730,188	684,162	8.9%	8,414,350
South Jersey	1,576,891	277,183	17.6%	1,854,074	229,864	12.4%	2,083,938	179,578	8.6%	2,263,516
SJ Share Population	22.0%			25.2%			27.0%			26.9%
SJ Share Net Growth		+ 100%			62.9%			26.2%		

Table 1.2 Population Change for Southern New Jersey Counties

	1970 Population	Change 1970 – 1980	Percent Change 70-80	1980 Population	Change 1980 – 1990	Percent Change 80-90	1990 Population	Change 1990 – 2000	Percent Change 90-00	2000 Population
Atlantic	175,043	19,076	10.9%	194,119	30,208	15.6%	224,327	28,225	12.6%	252,552
Burlington	323,132	39,410	12.2%	362,542	32,524	9.0%	395,066	28,328	7.2%	423,394
Camden	456,291	15,359	3.4%	471,650	31,174	6.6%	502,824	6,108	1.2%	508,932
Cape May	59,554	22,712	38.1%	82,266	12,823	15.6%	95,089	7,237	7.6%	102,326
Cumberland	121,374	11,492	9.5%	132,866	5,187	3.9%	138,053	8,385	6.1%	146,438
Gloucester	172,681	27,236	15.8%	199,917	30,165	15.1%	230,082	24,591	10.7%	254,673
Ocean	208,470	137,568	66.0%	346,038	87,165	25.2%	433,203	77,713	17.9%	510,916
Salem	60,346	4,330	7.2%	64,676	618	1.0%	65,294	-1,009	-1.5%	64,285

Table 1.3 County Share of South Jersey's Total Population

	1970	1980	1990	2000
Atlantic	11.1%	10.5%	10.8%	11.2%
Burlington	20.5%	19.6%	19.0%	18.7%
Camden	28.9%	25.4%	24.1%	22.5%
Cape May	3.8%	4.4%	4.6%	4.5%
Cumberland	7.7%	7.2%	6.6%	6.5%
Gloucester	11.0%	10.8%	11.0%	11.3%
Ocean	13.2%	18.7%	20.8%	22.6%
Salem	3.8%	3.5%	3.1%	2.8%

Table 1.4 County Share of South Jersey's Net Population Growth

	1970 – 1980	1980 – 1990	1990 – 2000
Atlantic	6.9%	13.1%	15.7%
Burlington	14.2%	14.1%	15.8%
Camden	5.5%	13.6%	3.4%
Cape May	8.2%	5.6%	4.0%
Cumberland	4.1%	2.3%	4.7%
Gloucester	9.8%	13.1%	13.7%
Ocean	49.5%	37.9%	43.3%
Salem	1.6%	0.3%	0.0%

Section 2 – Population at Municipal Level

Table 2.1 Population Change for Pinelands Municipalities

Municipality	County	2000	1990	1980	1970	Change 1990-00	Change 1980-90	Change 1970-80
Buena Boro	Atlantic	3,873	4,441	3,642	3,283	-13%	22%	11%
Buena Vista Twp.	Atlantic	7,436	7,655	6,959	4,239	-3%	10%	64%
Egg Harbor City	Atlantic	4,545	4,583	4,618	4,304	-1%	-1%	7%
Egg Harbor Twp.	Atlantic	30,726	24,544	19,381	9,882	25%	27%	96%
Estell Manor City	Atlantic	1,585	1,404	848	539	13%	66%	57%
Folsom Boro	Atlantic	1,972	2,181	1,892	1,767	-10%	15%	7%
Galloway Twp.	Atlantic	31,209	23,330	12,176	8,276	34%	92%	47%
Hamilton Twp.	Atlantic	20,499	16,012	9,499	6,445	28%	69%	47%
Hammonton town	Atlantic	12,604	12,208	12,298	11,464	3%	-1%	7%
Mullica Twp.	Atlantic	5,912	5,896	5,243	3,391	0%	12%	55%
Port Republic City	Atlantic	1,037	992	837	586	5%	19%	43%
Weymouth Twp.	Atlantic	2,257	1,957	1,260	998	15%	55%	26%
Bass River Twp.	Burlington	1,510	1,580	1,344	815	-4%	18%	65%
Evesham Twp.	Burlington	42,275	35,309	21,508	13,477	20%	64%	60%
Medford Lakes Boro	Burlington	4,173	4,462	4,958	4,792	-6%	-10%	3%
Medford Twp.	Burlington	22,253	20,526	17,622	8,292	8%	16%	113%
New Hanover Twp.	Burlington	9,744	9,546	14,258	27,410	2%	-33%	-48%
Pemberton Twp.	Burlington	28,691	31,342	29,720	19,754	-8%	5%	50%
Shamong Twp.	Burlington	6,462	5,765	4,537	1,318	12%	27%	244%
Southampton Twp.	Burlington	10,388	10,202	8,808	4,982	2%	16%	77%
Tabernacle Twp.	Burlington	7,170	7,360	6,236	2,103	-3%	18%	197%
Washington Twp.	Burlington	621	805	808	673	-23%	0%	20%
Woodland Twp.	Burlington	1,170	2,063	2,285	2,032	-43%	-10%	12%
Wrightstown Boro	Burlington	748	3,843	3,031	2,719	-81%	27%	11%
Berlin Twp.	Camden	5,290	5,466	5,348	5,692	-3%	2%	-6%
Chesilhurst Boro	Camden	1,520	1,526	1,590	801	0%	-4%	99%
Waterford Twp.	Camden	10,494	10,940	8,126	4,073	-4%	35%	100%
Winslow Twp.	Camden	34,611	30,087	20,034	11,202	15%	50%	79%
Dennis Twp.	Cape May	6,492	5,574	3,989	2,635	16%	40%	51%
Upper Twp.	Cape May	12,115	10,681	6,713	3,413	13%	59%	97%
Woodbine Boro	Cape May	2,716	2,678	2,809	2,625	1%	-5%	7%
Maurice River Twp.	Cumberland	6,928	6,648	4,577	3,743	4%	45%	22%
Franklin Twp.	Gloucester	15,466	14,482	12,396	8,990	7%	17%	38%
Monroe Twp.	Gloucester	28,967	26,703	21,639	14,071	8%	23%	54%
Barnegat Twp.	Ocean	15,270	12,235	8,702	1,539	25%	41%	465%
Beachwood Boro	Ocean	10,375	9,324	7,687	4,390	11%	21%	75%
Berkeley Twp.	Ocean	39,991	37,319	23,151	7,918	7%	61%	192%
Eagleswood Twp.	Ocean	1,441	1,476	1,009	823	-2%	46%	23%
Jackson Twp.	Ocean	42,816	33,233	25,644	18,276	29%	30%	40%
Lacey Twp.	Ocean	25,346	22,141	14,161	4,616	14%	56%	207%
Lakehurst Boro	Ocean	2,522	3,078	2,908	2,641	-18%	6%	10%
Little Egg Harbor Twp.	Ocean	15,945	13,333	8,483	2,972	20%	57%	185%
Manchester Twp.	Ocean	38,928	35,976	27,987	7,550	8%	29%	271%
Ocean Twp.	Ocean	6,450	5,416	3,731	2,222	19%	45%	68%
Plumsted Twp.	Ocean	7,275	6,005	4,674	4,113	21%	28%	14%
South Toms River Boro	Ocean	3,634	3,869	3,954	3,981	-6%	-2%	-1%
Stafford Twp.	Ocean	22,532	13,325	10,385	3,684	69%	28%	182%
"Outside" Municipalities								
Corbin City	Atlantic	468	412	254	258	14%	62%	-2%
North Hanover Twp.	Burlington	7,347	9,994	9,050	9,858	-26%	10%	-8%
Springfield Twp.	Burlington	3,227	3,028	2,691	2,244	7%	13%	20%
Berlin Boro	Camden	6,149	5,672	5,786	4,997	8%	-2%	16%
Vineland City	Cumberland	56,271	54,780	53,753	47,399	3%	2%	13%

Table 2.2 2000 Group Quarters Population for Pinelands Municipalities

Municipality	County	Population	Group Quarters	GQ %	Institution	Inst %	Non Institution	Non Inst %	% GQ in Pinelands
Buena	Atlantic	3,873	33	0.9%	0	0.0%	33	0.9%	88%
Buena Vista	Atlantic	7,436	94	1.3%	0	0.0%	94	1.3%	64%
Egg Harbor City	Atlantic	4,545	70	1.5%	35	0.8%	35	0.8%	100%
Egg Harbor Twp	Atlantic	30,619	49	0.2%	0	0.0%	49	0.2%	83%
Estell Manor	Atlantic	1,592	33	2.1%	33	2.1%	0	0.0%	100%
Folsom	Atlantic	1,972	7	0.4%	0	0.0%	7	0.4%	100%
Galloway	Atlantic	31,159	2,080	6.7%	0	0.0%	2,080	6.7%	98%
Hamilton	Atlantic	20,499	1,041	5.1%	1,028	5.0%	13	0.1%	99%
Hammonton	Atlantic	12,604	348	2.8%	205	1.6%	143	1.1%	100%
Mullica	Atlantic	5,912	47	0.8%	0	0.0%	47	0.8%	100%
Port Republic	Atlantic	1,032	6	0.6%	0	0.0%	6	0.6%	0%
Weymouth	Atlantic	2,250	0	0.0%	0	0.0%	0	0.0%	100%
Bass River	Burlington	1,552	0	0.0%	0	0.0%	0	0.0%	0%
Evesham	Burlington	42,428	185	0.4%	100	0.2%	85	0.2%	5%
Medford	Burlington	22,253	255	1.1%	201	0.9%	54	0.2%	86%
Medford Lakes	Burlington	4,173	0	0.0%	0	0.0%	0	0.0%	0%
New Hanover	Burlington	9,834	6,124	62.3%	4,846	49.3%	1,278	13.0%	100%
Pemberton	Burlington	28,650	516	1.8%	378	1.3%	138	0.5%	100%
Shamong	Burlington	6,462	2	0.0%	0	0.0%	2	0.0%	100%
Southampton	Burlington	10,333	61	0.6%	61	0.6%	0	0.0%	100%
Tabernacle	Burlington	7,170	72	1.0%	67	0.9%	5	0.1%	100%
Washington	Burlington	579	179	30.9%	109	18.8%	70	12.1%	100%
Woodland	Burlington	1,160	0	0.0%	0	0.0%	0	0.0%	100%
Wrightstown	Burlington	747	8	1.1%	0	0.0%	8	1.1%	0%
Berlin Township	Camden	5,290	19	0.4%	0	0.0%	19	0.4%	0%
Chesilhurst	Camden	1,520	138	9.1%	88	5.8%	50	3.3%	100%
Waterford	Camden	10,485	207	2.0%	0	0.0%	207	2.0%	100%
Winslow	Camden	34,659	1,112	3.2%	1,061	3.1%	51	0.1%	99%
Dennis	Cape May	6,503	208	3.2%	155	2.4%	53	0.8%	25%
Upper	Cape May	12,115	8	0.1%	0	0.0%	8	0.1%	0%
Woodbine	Cape May	2,716	568	20.9%	568	20.9%	0	0.0%	100%
Maurice River	Cumberland	6,928	3,360	48.5%	3,360	48.5%	0	0.0%	100%
Franklin	Gloucester	15,466	90	0.6%	0	0.0%	90	0.6%	39%
Monroe	Gloucester	28,967	212	0.7%	155	0.5%	57	0.2%	19%
Barneгат	Ocean	15,285	127	0.8%	125	0.8%	2	0.0%	0%
Beachwood	Ocean	10,316	6	0.1%	0	0.0%	6	0.1%	0%
Berkeley	Ocean	39,988	591	1.5%	223	0.6%	368	0.9%	0%
Eagleswood	Ocean	1,441	0	0.0%	0	0.0%	0	0.0%	0%
Jackson	Ocean	42,810	374	0.9%	360	0.8%	14	0.0%	0%
Lacey	Ocean	25,346	39	0.2%	26	0.1%	13	0.1%	0%
Lakehurst	Ocean	2,522	0	0.0%	0	0.0%	0	0.0%	0%
Little Egg Harbor	Ocean	16,019	166	1.0%	166	1.0%	0	0.0%	0%
Manchester	Ocean	38,960	728	1.9%	546	1.4%	182	0.5%	100%
Ocean	Ocean	6,450	54	0.8%	0	0.0%	54	0.8%	0%
Plumsted	Ocean	7,275	8	0.1%	0	0.0%	8	0.1%	75%
So. Toms River	Ocean	3,608	0	0.0%	0	0.0%	0	0.0%	0%
Stafford	Ocean	22,517	293	1.3%	223	1.0%	70	0.3%	77%
"Outside" Munis									
Corbin City	Atlantic	468	0	0.0%	0	0.0%	0	0.0%	0%
North Hanover	Burlington	7,325	0	0.0%	0	0.0%	0	0.0%	0%
Springfield	Burlington	3,227	7	0.2%	0	0.0%	7	0.2%	0%
Berlin Borough	Camden	6,149	72	1.2%	18	0.3%	54	0.9%	0%
Vineland	Cumberland	56,271	2,393	4.3%	1,031	1.8%	1,362	2.4%	0%

Table 2.3 Group Quarters Component of Pinelands Municipal Population Change

Municipality	County	2000 Population	Pop Change 1990 – 2000	Institutional Change	Non- Institutional Change	Non-Group Quarters Change	Difference
Buena	Atlantic	3,873	-568	0	16	-584	16
Buena Vista	Atlantic	7,436	-219	0	85	-304	85
Egg Harbor City	Atlantic	4,545	-38	-20	15	-33	-5
Egg Harbor Twp	Atlantic	30,619	6,182	0	27	6,155	-27
Estell Manor	Atlantic	1,592	181	-10	0	191	10
Folsom	Atlantic	1,972	-209	0	7	-216	7
Galloway	Atlantic	31,159	7,879	-40	193	7,726	-153
Hamilton	Atlantic	20,499	4,487	406	-37	4,118	-369
Hammonton	Atlantic	12,604	396	-103	113	386	-10
Mullica	Atlantic	5,912	16	-60	47	29	13
Port Republic	Atlantic	1,032	45	0	6	39	-6
Weymouth	Atlantic	2,250	300	0	0	300	0
Bass River	Burlington	1,552	-70	0	0	-70	0
Evesham	Burlington	42,428	6,966	-23	78	6,911	-55
Medford	Burlington	22,253	1,727	-93	54	1,766	39
Medford Lakes	Burlington	4,173	-289	0	0	-289	0
New Hanover	Burlington	9,834	198	4,225	-5,035	1,008	810
Pemberton Twp	Burlington	28,650	-2,651	6	103	-2,760	109
Shamong	Burlington	6,462	697	-70	2	765	68
Southampton	Burlington	10,333	186	61	-5	130	-56
Tabernacle	Burlington	7,170	-190	67	5	-262	72
Washington	Burlington	579	-184	86	70	-340	156
Woodland	Burlington	1,160	-893	-826	0	-67	-826
Wrightstown	Burlington	747	-3,095	0	-91	-3,004	-91
Berlin	Camden	5,290	-176	0	6	-182	6
Chesilhurst	Camden	1,520	-6	88	-22	-72	66
Waterford	Camden	10,485	-446	-152	186	-480	34
Winslow	Camden	34,659	4,524	-66	-14	4,604	80
Dennis	Cape May	6,503	918	-45	53	910	-8
Upper	Cape May	12,115	1,434	0	8	1,426	-8
Woodbine	Cape May	2,716	38	-134	0	172	134
Maurice River	Cumberland	6,928	280	358	0	-78	-358
Franklin	Gloucester	15,466	984	0	-34	1,018	34
Monroe	Gloucester	28,967	2,264	-21	10	2,275	11
Barnegat	Ocean	15,285	3,035	2	2	3,031	-4
Beachwood	Ocean	10,316	1,051	0	6	1,045	-6
Berkeley	Ocean	39,988	2,672	-296	361	2,607	-65
Eagleswood	Ocean	1,441	-35	0	0	-35	0
Jackson	Ocean	42,810	9,583	63	-15	9,535	-48
Lacey	Ocean	25,346	3,205	-121	13	3,313	108
Lakehurst	Ocean	2,522	-556	0	0	-556	0
Little Egg Harbor	Ocean	16,019	2,612	45	0	2,567	-45
Manchester	Ocean	38,960	2,952	180	-249	3,021	69
Ocean	Ocean	6,450	1,034	0	3	1,031	-3
Plumsted	Ocean	7,275	1,270	0	8	1,262	-8
South Toms River	Ocean	3,608	-235	0	0	-235	0
Stafford	Ocean	22,517	9,207	118	70	9,019	-188
"Outside" Munis							
Corbin City	Atlantic	468	56	0	0	56	0
North Hanover	Burlington	7,325	-2,647	0	-25	-2,622	-25
Springfield	Burlington	3,227	199	-40	-17	256	57
Berlin Boro	Camden	6,149	477	18	54	405	-72
Vineland	Cumberland	56,271	1,491	-939	1,050	1,380	-111

Table 2.4 Corrected Census 2000 Population and Group Quarters Population for Pinelands Municipalities

County	Municipality	Total Population	Group Quarters Population	Corrected Population	Group Quarters Correction	Population Adjustment	Group Quarters Adjustment
Burlington	Pemberton Twp	28,691	509	28,569	38	-122	-471
Burlington	Woodland	1,170	0	1,292	12	+122	+12
Cumberland	Maurice River	6,928	3,361	7,374	3,807	+446	+446
Cumberland	Vineland	56,271	2,402	55,825	1,956	-446	-446

- Corrected counts are the result of the Count Question Resolution (CQR) Program.
- Counts do not change the official 2000 Census numbers nor do they affect the redistricting numbers used to apportion the U.S. House of Representatives.
- Corrected counts are provided in the table below for informational purposes. These corrected numbers are not used anywhere else in this document. Official census numbers are used in all maps, tables, and calculations.

Table 2.5 Population Change for Pinelands and Non-Pinelands Aggregates

	1970 Population	Change 1970 – 1980	Percent Change 70-80	1980 Population	Change 1980 – 1990	Percent Change 80-90	1990 Population	Change 1990 – 2000	Percent Change 90-00	2000 Population
Pinelands Municipalities	265,511	157,954	59.5%	423,465	126,056	29.8%	549,521	66,463	12.1%	615,984
Non- Pinelands Municipalities	1,311,390	119,219	9.1%	1,430,609	103,808	7.3%	1,534,417	113,115	7.4%	1,647,532
Pinelands Share SJ Population	16.8%			22.8%			26.4%			27.2%
Pinelands Share SJ Net Growth		57.0%			54.8%			37.0%		

Section 3 – Population at Census Tract Level

Table 3.1 Population Change for Pinelands Municipal Census Tract Aggregates Inside and Outside the Pinelands Boundary

	1980 Population	Change 1980 – 1990	Percent Change 80-90	1990 Population	Change 1990 – 2000	Percent Change 90-00	2000 Population
Pinelands Tracts Inside	236,169	44,365	18.8%	280,534	18,202	6.5%	298,736
Pinelands Tracts Outside	187,296	81,691	43.6%	268,987	48,261	17.9%	317,248
Inside Tracts Share Pines Population	55.8%			51.1%			48.5%
Inside Tracts Share Pines Net Growth		35.2%			27.4%		

Table 3.2 Population Change for Pinelands Municipal Census Tracts Inside Pinelands Boundary (See maps on pages 54-55)

County	Municipality	Census Tract	1970 Pop	Pop Change 70-80	Pop % Change 70-80	1980 Pop	Pop Change 80-90	Pop % Change 80-90	1990 Pop	Pop Change 90-00	Pop % Change 90-00	2000 Pop
Atlantic	Buena Vista	112.02	4,533	2,426	53.5%	6,959	696	10.0%	7,655	-219	-2.9%	7,436
Atlantic	Corbin City, Estell Manor, Weymouth	116	1,878	484	25.8%	2,362	1,411	59.7%	3,773	537	14.2%	4,310
Atlantic	Egg Harbor City	106	4,304	314	7.3%	4,618	-35	-0.80%	4,583	-38	-0.8%	4,545
Atlantic	Egg Harbor Twp	117.01	2,657	1,252	47.1%	3,909	617	15.8%	4,526	1,824	40.3%	6,350
Atlantic	Egg Harbor Twp	117.02	1,861	876	47.1%	2,737	433	15.8%	3,170	281	8.9%	3,451
Atlantic	Egg Harbor Twp	118.02	1,516	2,127	140.3%	3,643	1,177	32.3%	4,820	2,383	49.4%	7,203
Atlantic	Folsom	112.01	1,292	600	46.4%	1,892	289	15.3%	2,181	-209	-9.6%	1,972
Atlantic	Galloway	104.01	2,008	1,657	82.5%	3,665	514	14.0%	4,179	475	11.4%	4,654
Atlantic	Galloway	104.02	982	109	11.1%	1,091	802	73.5%	1,893	137	7.2%	2,030
Atlantic	Galloway	104.03	1,299	809	62.3%	2,108	361	17.1%	2,469	1,505	61.0%	3,974
Atlantic	Hamilton	114.01	1,245	670	53.8%	1,915	2,386	124.6%	4,301	241	5.6%	4,542
Atlantic	Hamilton	114.02	2,037	1,099	54.0%	3,136	3,714	118.4%	6,850	3,050	44.5%	9,900
Atlantic	Hamilton	115	3,163	1,285	40.6%	4,448	413	9.3%	4,861	1,196	24.6%	6,057
Atlantic	Hammonton	108	2,001	472	23.6%	2,473	49	2.0%	2,522	92	3.7%	2,614
Atlantic	Hammonton	109	4,863	-28	-0.6%	4,835	127	2.6%	4,962	-17	-0.3%	4,945
Atlantic	Hammonton	110	1,954	439	22.5%	2,393	-189	-7.9%	2,204	25	1.1%	2,229
Atlantic	Hammonton	111	2,646	-49	-1.9%	2,597	-77	-3.0%	2,520	296	11.8%	2,816
Atlantic	Mullica	107	3,391	1,852	54.6%	5,243	653	12.5%	5,896	16	0.3%	5,912
Burlington	Bass River	7034	919	403	43.6%	1,322	254	19.2%	1,576	-66	-4.2%	1,510
Burlington	Evesham	7040.09	901	590	65.5%	1,491	873	58.6%	2,364	1,521	64.3%	3,885
Burlington	Evesham	7040.11	932	-22	-2.4%	910	1,525	167.6%	2,435	314	12.9%	2,749
Burlington	Evesham	7040.12	2,244	-55	-2.5%	2,189	3,672	167.8%	5,861	332	5.7%	6,193
Burlington	Medford	7038.01	2,225	2,636	118.5%	4,861	699	14.4%	5,560	899	16.2%	6,459
Burlington	Medford	7038.03	2,255	3,076	136.4%	5,331	270	5.1%	5,601	-500	-8.9%	5,101
Burlington	Medford	7038.04	2,508	1,875	74.8%	4,383	1,773	40.5%	6,156	691	11.2%	6,847

County	Municipality	Census Tract	1970 Pop	Pop Change 70-80	Pop % Change 70-80	1980 Pop	Pop Change 80-90	Pop % Change 80-90	1990 Pop	Pop Change 90-00	Pop % Change 90-00	2000 Pop
Burlington	Medford Lakes	7039	4,792	231	4.8%	5,023	-594	-11.8%	4,429	-256	-5.8%	4,173
Burlington	New Hanover	7021.04*	12,936	-2,766	-21.4%	10,170	-3,318	-32.6%	6,852	-1,496	-21.8%	5,356
Burlington	New Hanover	7021.08	2,436	-991	-40.7%	1,445	-144	-10.0%	1,301	-1,301	-100.0%	0
Burlington	New Hanover	7021.11	3,858	-1,341	-34.8%	2,517	-483	-19.2%	2,034	1,719	84.5%	3,753
Burlington	North Hanover	7021.01	10,154	-4,882	-48.1%	5,272	321	6.1%	5,593	-2,503	-44.8%	3,090
Burlington	Pemberton Twp	7021.09	5,928	-2,844	-48.0%	3,084	123	4.0%	3,207	-1,096	-34.2%	2,111
Burlington	Pemberton Twp	7021.10	0	0	0	0	0	0	0	0	0	0
Burlington	Pemberton Twp	7022.03	2,322	1,854	79.8%	4,176	-122	-2.9%	4,054	-483	-11.9%	3,571
Burlington	Pemberton Twp	7022.05	4,531	2,579	56.9%	7,110	733	10.3%	7,843	220	2.8%	8,063
Burlington	Pemberton Twp	7022.06	1,180	712	60.3%	1,892	139	7.4%	2,031	-151	-7.4%	1,880
Burlington	Pemberton Twp	7022.07	2,090	2,012	96.3%	4,102	7	0.2%	4,109	-321	-7.8%	3,788
Burlington	Pemberton Twp	7022.08	3,928	3,295	83.9%	7,223	533	7.4%	7,756	-563	-7.3%	7,193
Burlington	Shamong	7037	1,151	3,386	294.2%	4,537	1,228	27.1%	5,765	697	12.1%	6,462
Burlington	Southampton	7032.01	1,868	1,462	78.3%	3,330	494	14.8%	3,824	-76	-2.0%	3,748
Burlington	Southampton	7032.03	1,970	1,572	79.8%	3,542	449	12.7%	3,991	26	0.7%	4,017
Burlington	Springfield	7021.06	0	135	100.0%	135	-14	-10.4%	121	-121	-100.0%	0
Burlington	Tabernacle	7036	2,042	4,194	205.4%	6,236	1,124	18.0%	7,360	-190	-2.6%	7,170
Burlington	Washington	7035*	713	117	16.4%	830	-21	-2.5%	809	-188	-23.2%	621
Burlington	Woodland	7033*	2,093	192	9.2%	2,285	-222	-9.7%	2,063	-893	-43.3%	1,170
Burlington	Wrightstown	7021.07	0	1,469	100.0%	1,469	-146	-9.9%	1,323	-1,322	-99.9%	1
Camden	Chesilhurst	6090	734	856	116.6%	1,590	-64	-4.0%	1,526	-6	-0.4%	1,520
Camden	Waterford	6089.01	2,639	1,434	54.3%	4,073	1,611	39.6%	5,684	-153	-2.7%	5,531
Camden	Waterford	6089.03	941	2,212	235.1%	3,153	580	18.4%	3,733	-141	-3.8%	3,592
Camden	Waterford	6089.04	370	530	143.2%	900	623	69.2%	1,523	-152	-10.0%	1,371
Camden	Winslow	6091.02*	1,908	-476	-245.0%	1,432	99	6.9%	1,531	-1,028	-67.2%	503
Camden	Winslow	6091.03	2,367	1,022	43.2%	3,389	813	24.0%	4,202	598	14.2%	4,800
Camden	Winslow	6091.04	2,740	1,341	48.9%	4,081	979	24.0%	5,060	-689	-13.6%	4,371
Camden	Winslow	6092.05	1,111	1,758	158.2%	2,869	2,104	73.3%	4,973	1,063	21.4%	6,036

County	Municipality	Census Tract	1970 Pop	Pop Change 70-80	Pop % Change 70-80	1980 Pop	Pop Change 80-90	Pop % Change 80-90	1990 Pop	Pop Change 90-00	Pop % Change 90-00	2000 Pop
Cape May	Dennis	206	NA			1,687	396	23.5%	2,083	52	2.5%	2,135
Cape May	Upper	204	NA			1,693	870	51.4%	2,563	253	9.9%	2,816
Cape May	Woodbine	205	NA			2,809	-172	-6.1%	2,637	79	3.0%	2,716
Cumberland	Maurice River	101.01*	2,959	-132	-4.5%	2,827	1,279	45.2%	4,106	2,822	68.7%	6,928
Cumberland	Maurice River	101.02*	0	791	100.0%	791	358	45.3%	1,149	-1,149	-100.0%	0
Cumberland	Maurice River	101.03*	784	175	22.3%	959	434	45.3%	1,393	-1,393	-100.0%	0
Gloucester	Franklin	5017.02	1,571	595	37.9%	2,166	351	16.2%	2,517	147	5.8%	2,664
Gloucester	Monroe	5016.04	3,316	1,620	48.9%	4,936	684	13.9%	5,620	279	5.0%	5,899
Gloucester	Monroe	5016.05	1,702	986	57.9%	2,688	832	31.0%	3,520	-84	-2.4%	3,436
Gloucester	Monroe	5016.06	2,970	1,721	58.0%	4,691	1,453	31.0%	6,144	-666	-10.8%	5,478
Ocean	Barnegat	7340.01	NA			1,913	763	39.9%	2,676	550	20.6%	3,226
Ocean	Berkeley	7312.04	NA			1,285	1,286	100.1%	2,571	1,471	57.2%	4,042
Ocean	Jackson	7174	NA			3,603	362	10.1%	3,965	597	15.1%	4,562
Ocean	Jackson, Manchester, Plumsted	7190*	NA			848	-190	-22.4%	658	-212	-32.2%	446
Ocean	Lacey	7320.01	NA			2,827	1,713	60.6%	4,540	404	8.9%	4,944
Ocean	Lakehurst	7210	NA			2,908	170	5.9%	3,078	-556	-18.1%	2,522
Ocean	Manchester	7200	NA			4,310	925	21.5%	5,235	812	15.5%	6,047
Ocean	Manchester	7201.01	NA			4,493	335	7.5%	4,828	427	8.8%	5,255
Ocean	Manchester	7201.03	NA			3,549	264	7.4%	3,813	290	7.6%	4,103
Ocean	Manchester	7202.01	NA			3,965	2,123	53.5%	6,088	464	7.6%	6,552
Ocean	Stafford	7350	NA			4,845	890	18.4%	5,735	7,655	133.5%	13,390
TOTAL						236,169	44,365	18.8%	280,534	18,202	6.5%	298,736

* Affected by changes in institutional group quarters population.

Table 3.3 Group Quarters Component of Pinelands Municipal Census Tracts with Large Group Quarters Population

- Pop = Total Population. 1970 – 2000. Only years where group quarters population is a significant component are shown.
- GQ = Group Quarters Population. In 1970 and 1980 this number is one component of group quarters used to measure military barracks and dormitories. GQ in 1990 and 2000 is the total population for all group quarters. Dormitories were broken down in 1990 and 2000 while military barracks were folded into the group quarters aggregate.
- Cor = Correctional Facility. 1990 and 2000 (classified as part of Other in 1970 and 1980)
- Dorm = College Dormitory. 1990 and 2000 (classified as part of Group Quarters in 1970 and 1980)
- Men = Mental Institution. 1970 - 2000
- Oth = Other Group Quarters 1970 and 1980. In 1970 and 1980 correctional facilities population and other miscellaneous groups were designated as "other". This category was dropped in 1990 and 2000, correctional facilities were broken out into their own category and miscellaneous groups were folded into the group quarters aggregate.

County	Municipality	Tract	Pop90	GQ90	Dorm90	Pop00	GQ00	Dorm00					
County Atlantic	Municipality Galloway	Tract 104.02	1,893	1,851	1,834	2,030	1,985	1,985					
County Atlantic	Municipality Hamilton	Tract 114.02	Pop80 3,136	Oth80 95	Pop90 6,850	GQ90 587	Cor90 587	Pop00 9,900	GQ00 995	Cor00 955			
County Burlington	Municipality New Hanover	Tract 7021.04	Pop70 12,936	GQ70 7,551	Pop80 10,170	GQ80 8,958	Pop90 6,852	GQ90 5,658	Cor90 614	Pop00 5,356	GQ00 4,886	Cor00 4,836	
County Burlington	Municipality New Hanover	Tract 7021.11	Pop70 3,858	GQ70 2,252	Pop80 2,517	GQ80 1,354	Pop90 2,034	GQ90 1,099	Pop00 3,753	GQ00 1,214			
County Burlington	Municipality North Hanover	Tract 7021.01	Pop70 10,154	GQ70 5,927	Pop80 5,272	GQ80 0	Pop90 5,593	GQ90 25	Pop00 3,090	GQ00 0			
County Burlington	Municipality Pemberton	Tract 7021.08	Pop70 2,436	GQ70 1,422	Pop80 1,445	GQ80 0							
County Burlington	Municipality Pemberton	Tract 7021.09	Pop70 5,928	GQ70 3,460	Pop80 3,084	GQ80 0							
County Burlington	Municipality Washington	Tract 7035	Pop80 830	GQ80 13	Pop90 809	GQ90 23	Cor90 23	Pop00 621	GQ00 180	Cor00 136			
County Burlington	Municipality Woodland	Tract 7033	Pop70 2,093	Oth70 1,148	Pop80 2,285	Oth80 1,114	Pop90 2,063	GQ90 826	Cor90 77	Pop00 1,170	GQ00 0		
County Cape May	Municipality Woodbine	Tract 205	Pop80 2,809	Oth80 934	Pop90 2,637	GQ90 702	Pop00 2,716	GQ00 571					

County Camden	Municipality Winslow	Tract 6091.02	Pop70 1,908	GQ70 71	Men70 1,375	Pop80 1,432	Men80 904	Pop90 1,531	GQ90 1,157	Pop00 503	GQ00 411	Cor00 353	
County Cumberland	Municipality Maurice River	Tract 101.01	Pop70 2,959	GQ70 11	Oth70 196	Pop80 2,827	Oth80 590	Pop90 4,106	GQ90 1,854	Cor90 1,854	Pop00 6,928	GQ00 3,361	Cor00 3,361
County Cumberland	Municipality Maurice River	Tract 101.02	Pop80 791	Other80 165	Pop90 1,149	GQ90 519	Cor90 519	Pop00 0					
County Cumberland	Municipality Maurice River	Tract 101.03	Pop70 784	Oth70 52	Pop80 959	Oth80 200	Pop90 1,393	GQ90 629	Cor90 629	Pop00 0			
County Ocean	Municipality Jackson/ Manchester/ Plumsted	Tract 7190	Pop80 848	GQ80 565	Pop90 658	GQ90 399	Pop00 446	GQ00 181					

Table 3.4 Pinelands (Census Tract) Share of County Population

	1970	1980	1990	2000
Atlantic	24.9%	30.9%	32.7%	33.6%
Burlington	23.5%	26.2%	26.3%	23.4%
Camden	2.7%	4.6%	5.6%	5.4%
Cape May	NA	7.5%	7.7%	7.5%
Cumberland	3.1%	3.4%	4.8%	4.7%
Gloucester	5.5%	7.2%	7.7%	6.9%
Ocean	NA	10.0%	10.0%	10.8%
Salem	0.0%	0.0%	0.0%	0.0%

Table 3.5 Pinelands (Census Tract) Share of County Net Population Growth

	1970 – 1980	1980 – 1990	1990 – 2000
Atlantic	85.9%	44.2%	41.0%
Burlington	47.9%	28.1%	0.0%
Camden	60.6%	21.6%	0.0%
Cape May	NA	8.5%	5.3%
Cumberland	7.3%	39.9%	3.3%
Gloucester	18.1%	11.0%	0.0%
Ocean	NA	9.9%	15.3%
Salem	0.0%	0.0%	0.0%

Table 3.6 County Share of Pinelands (Census Tract) Population

	1980	1990	2000
Atlantic	25.4%	26.1%	28.4%
Burlington	40.2%	37.1%	33.1%
Camden	9.1%	10.1%	9.3%
Cape May	2.6%	2.6%	2.6%
Cumberland	1.9%	2.4%	2.3%
Gloucester	6.1%	6.3%	5.9%
Ocean	14.6%	15.4%	18.4%

Table 3.7 Population Change for Pinelands Portion (Based on Census Tracts) of Southern New Jersey Counties

	1970 Population	Change 1970 – 1980	Percent Change 70-80	1980 Population	Change 1980 – 1990	Percent Change 80-90	1990 Population	Change 1990 – 2000	Percent Change 90-00	2000 Population
Atlantic	43,630	16,394	37.6%	60,024	13,341	22.2%	73,365	11,575	15.8%	84,940
Burlington	75,976	18,889	24.9%	94,865	9,153	9.6%	104,018	-5,107	-4.9%	98,911
Camden	12,180	9,307	76.4%	21,487	6,745	31.4%	28,232	-508	-1.8%	27,724
Cape May	NA	NA	NA	6,189	1,094	17.7%	7,283	384	5.3%	7,667
Cumberland	3,743	834	22.3%	4,577	2,071	45.2%	6,648	280	4.2%	6,928
Gloucester	9,559	4,922	51.5%	14,481	3,320	22.9%	17,801	-324	-1.8%	17,477
Ocean	NA	NA	NA	34,546	8,641	25.0%	43,187	11,902	27.6%	55,089
Pines Total	NA	NA	NA	236,169	44,365	18.8%	280,534	18,202	6.5%	298,736

Section 4 – Population at Census Block Group Level

Table 4.1 Pinelands Census Block Group Population

	Population Inside Pinelands Boundary 2000	Share of Total County Population	Share of Total Pinelands Population
Atlantic	81,477	32.3%	28.7%
Burlington	98,778	23.3%	34.8%
Camden	27,724	5.4%	9.8%
Cape May	7,667	7.5%	2.7%
Cumberland	5,338	3.6%	1.9%
Gloucester	17,477	6.9%	6.2%
Ocean	45,140	8.8%	15.9%
Salem	0	0.0%	0.0%
<hr/>			
Total Inside Pinelands Boundary	283,601		
Total Outside Boundary within Pinelands Municipality	405,003		
Total Non-Pinelands Municipalities	1,574,912		

Table 4.2 2000 Population for Pinelands Municipalities Inside and Outside the Pinelands Boundary (Census Block Group)

County	Municipality	Total Pop Inside 2000	% Population Inside	% Population Outside	Total Pop Outside 2000
Atlantic	Buena	865	22%	78%	3,008
Atlantic	Buena Vista	6,248	84%	16%	1,188
Atlantic	Egg Harbor City	4,545	100%	0%	0
Atlantic	Egg Harbor Twp	16,209	54%	46%	13,841
Atlantic	Estell/Weymouth/Corbin	3,177	74%	26%	1,133
Atlantic	Folsom	1,972	100%	0%	0
Atlantic	Galloway	10,658	41%	59%	15,465
Atlantic	Galloway/PortRep	0	0%	100%	6,123
Atlantic	Hamilton	19,287	94%	6%	1,212
Atlantic	Hammonton	12,604	100%	0%	0
Atlantic	Mullica	5,912	100%	0%	0
Burlington	Bass River	1,510	100%	0%	0
Burlington	Evesham	12,827	30%	70%	29,448
Burlington	Medford	18,919	85%	15%	3,334
Burlington	Medford Lakes	4,173	100%	0%	0
Burlington	New Hanover	9,109	93%	7%	635
Burlington	Pemberton Twp	27,243	95%	5%	1,448
Burlington	Shamong	6,462	100%	0%	0
Burlington	Southampton	6,445	62%	38%	3,943
Burlington	Tabernacle	7,170	100%	0%	0
Burlington	Washington	621	100%	0%	0
Burlington	Woodland	1,170	100%	0%	0
Burlington	Wrightstown	39	5%	95%	709
Camden	Berlin Boro	0	0%	100%	6,149
Camden	Chesilhurst	1,520	100%	0%	0
Camden	Waterford	10,494	100%	0%	0
Camden	Winslow	15,710	45%	55%	18,901
Cape May	Dennis	2,135	33%	67%	4,357
Cape May	Upper	2,816	23%	77%	9,299
Cape May	Woodbine	2,716	100%	0%	0
Cumberland	Maurice River	5,152	74%	26%	1,776
Gloucester	Franklin	2,664	17%	83%	12,802
Gloucester	Monroe	14,813	51%	49%	14,154
Ocean	Barneгат	3,226	21%	79%	12,044
Ocean	Beachwood	1,331	13%	87%	9,044
Ocean	Berkeley	2,391	6%	94%	37,434
Ocean	Eagleswood	0	0%	100%	1,441
Ocean	Jackson	5,627	13%	87%	37,183
Ocean	Jackson/Manchester	446	100%	0%	0
Ocean	Lacey	521	2%	98%	24,825
Ocean	Lakehurst	2,522	100%	0%	0
Ocean	Little Egg Harbor	989	6%	94%	14,956
Ocean	Manchester	10,995	29%	71%	27,493
Ocean	Ocean	825	13%	87%	5,625
Ocean	Plumsted	0	0%	100%	7,275
Ocean	South Toms River	2,877	79%	21%	757
Ocean	Stafford	13,390	59%	41%	9,142
"Outside" Municipalities					
Burlington	North Hanover	3,090	42%	58%	4,257
Burlington	Springfield	0	0%	100%	3,227
Camden	Berlin Twp	0	0%	100%	5,290
Cumberland	Vineland	186	0%	100%	56,085

Section 5 – Population at Census Block Level

Table 5.1 Population Change for Pinelands Census Block Aggregates Inside and Outside the Pinelands Boundary

	1990 Population	Change 1990 – 2000	Percent Change 90-00	2000 Population
Pinelands Blocks Inside	262,507	14,382	5.5%	276,889
Pinelands Blocks Outside	361,009	51,548	14.3%	412,557
Inside Blocks Share Pines Population	42.1%			40.2%
Inside Blocks Share Pines Net Growth		21.8%		

Table 5.2 Pinelands (Census Block) Share of Population Change for Southern New Jersey Counties

	1990 Population	Change 1990 – 2000	Percent Change 90-00	2000 Population
Atlantic	70,364	11,064	15.7%	81,428
Burlington	105,243	-6,979	-6.6%	98,264
Camden	28,369	-212	-0.7%	28,157
Cape May	5,347	167	3.1%	5,514
Cumberland	4,558	447	9.8%	5,005
Gloucester	17,653	-583	-3.3%	17,070
Ocean	30,973	10,478	33.8%	41,451

Table 5.3 Pinelands (Census Block) Share of County Population and Net Population Growth

	1990 Population	2000 Population	Net Growth 1990 - 2000
Atlantic	31.4%	32.2%	39.2%
Burlington	26.6%	23.2%	0.0%
Camden	5.6%	5.5%	0.0%
Cape May	5.6%	5.4%	2.3%
Cumberland	3.3%	3.4%	5.3%
Gloucester	7.7%	6.7%	0.0%
Ocean	7.1%	8.1%	13.5%

Table 5.4 2000 Population for Pinelands Municipalities Inside and Outside the Pinelands Boundary (Census Block)

Municipality	County	Blocks Inside	Blocks Outside	% Area in Pinelands	Total Population Inside 2000	% Population Inside	% Population Outside	Total Population Outside 2000
Buena	Atlantic	38	80	47%	865	22%	78%	3,008
Buena Vista	Atlantic	291	34	90%	6,248	84%	16%	1,188
Egg Harbor City	Atlantic	852	0	100%	4,545	100%	0%	0
Egg Harbor Twp	Atlantic	616	394	38%	16,209	53%	47%	14,517
Estell Manor	Atlantic	164	29	72%	1,502	95%	5%	72
Folsom	Atlantic	157	0	100%	1,972	100%	0%	0
Galloway	Atlantic	626	245	38%	10,658	34%	66%	20,551
Hamilton	Atlantic	1,084	50	97%	19,136	93%	7%	1,363
Hammonton	Atlantic	490	0	100%	12,604	100%	0%	0
Mullica	Atlantic	591	0	100%	5,912	100%	0%	0
Port Republic	Atlantic	10	45	35%	102	10%	90%	935
Weymouth	Atlantic	119	29	82%	1,668	74%	26%	600
Bass River	Burlington	255	20	87%	1,234	82%	18%	276
Evesham	Burlington	177	401	55%	11,553	27%	73%	30,722
Medford Lakes	Burlington	187	0	100%	4,173	100%	0%	0
Medford Twp	Burlington	453	57	75%	18,239	82%	18%	4,014
New Hanover	Burlington	31	20	91%	9,109	93%	7%	635
Pemberton Twp	Burlington	948	26	90%	28,127	98%	2%	564
Shamong	Burlington	183	0	100%	6,462	100%	0%	0
Southampton	Burlington	246	98	73%	7,193	69%	31%	3,195
Tabernacle	Burlington	241	0	100%	7,170	100%	0%	0
Washington	Burlington	396	0	100%	621	100%	0%	0
Woodland	Burlington	456	0	100%	1,170	100%	0%	0
Wrightstown	Burlington	14	13	73%	123	16%	84%	625
Berlin Boro	Camden	11	160	10%	141	2%	98%	6,008
Chesilhurst	Camden	77	0	100%	1,520	100%	0%	0
Waterford	Camden	345	0	100%	10,494	100%	0%	0
Winslow	Camden	346	230	81%	15,599	45%	55%	19,012
Dennis	Cape May	84	104	38%	1,623	25%	75%	4,869
Upper	Cape May	76	336	33%	1,175	10%	90%	10,940
Woodbine	Cape May	124	0	95%	2,716	100%	0%	0
Maurice River	Cumberland	261	132	69%	4,819	70%	30%	2,109
Franklin	Gloucester	42	263	36%	2,664	17%	83%	12,802
Monroe	Gloucester	266	201	69%	14,406	50%	50%	14,561
Barnegat	Ocean	228	197	56%	3,226	21%	79%	12,044
Beachwood	Ocean	27	361	28%	4	0%	100%	10,371
Berkeley	Ocean	53	863	30%	2,467	6%	94%	37,524
Eagleswood	Ocean	35	69	20%	0	0%	100%	1,441
Jackson	Ocean	231	613	47%	4,106	10%	90%	38,710
Lacey	Ocean	325	829	67%	521	2%	98%	24,825
Lakehurst	Ocean	68	9	87%	2,393	95%	5%	129
Little Egg Harbor	Ocean	90	354	23%	107	1%	99%	15,838
Manchester	Ocean	742	692	72%	12,185	31%	69%	26,743
Ocean	Ocean	78	199	41%	145	2%	98%	6,305
Plumsted	Ocean	21	144	53%	412	6%	94%	6,863
South Toms River	Ocean	37	33	48%	2,495	69%	31%	1,139
Stafford	Ocean	278	324	39%	13,390	59%	41%	9,142
"Outside" Munis								
Corbin City	Atlantic	2	31	1%	7	1%	99%	461
North Hanover	Burlington	5	110	4%	3,090	42%	58%	4,257
Springfield	Burlington	5	121	2%	0	0%	100%	3,227
Berlin Twp	Camden	21	125	16%	403	8%	92%	4,887
Vineland	Cumberland	14	770	7%	186	0%	100%	56,085

Table 5.5 1990-2000 Population Change for Pinelands Municipalities Inside and Outside the Pinelands Boundary (Census Block)

Municipality	County	% Area in Pinelands	Total Population Inside 1990	Change in Pop In Pines 1990-2000	Percent Change 1990-2000	Total Population Outside 1990	Change in Pop Out Pines 1990-2000	Percent Change 1990-2000
Buena	Atlantic	47%	1,077	-212	-20%	3,364	-356	-11%
Buena Vista	Atlantic	90%	6,512	-264	-4%	1,143	45	4%
Egg Harbor City	Atlantic	100%	4,583	-38	-1%			
Egg Harbor Twp	Atlantic	38%	11,687	4,522	39%	12,905	1,612	12%
Estell Manor	Atlantic	72%	1,268	234	18%	123	-51	-41%
Folsom	Atlantic	100%	2,181	-209	-10%			
Galloway	Atlantic	38%	8,497	2,161	25%	14,824	5,727	39%
Hamilton	Atlantic	97%	14,988	4,148	28%	1,024	339	33%
Hammonton	Atlantic	100%	12,208	396	3%			
Mullica	Atlantic	100%	5,896	16	0%			
Port Republic	Atlantic	35%	124	-22	-18%	877	58	7%
Weymouth	Atlantic	82%	1,340	328	24%	630	-30	-5%
Bass River	Burlington	87%	1,269	-35	-3%	311	-35	-11%
Evesham	Burlington	55%	10,121	1,432	14%	25,188	5,534	22%
Medford Lakes	Burlington	100%	4,462	-289	-6%			
Medford Twp	Burlington	75%	18,206	33	0%	2,320	1,694	73%
New Hanover	Burlington	91%	8,962	147	2%	584	51	9%
Pemberton Twp	Burlington	90%	30,740	-2,613	-9%	602	-38	-6%
Shamong	Burlington	100%	5,765	697	12%			
Southampton	Burlington	73%	6,792	401	6%	3,410	-215	-6%
Tabernacle	Burlington	100%	7,360	-190	-3%			
Washington	Burlington	100%	805	-184	-23%			
Woodland	Burlington	100%	2,063	-893	-43%			
Wrightstown	Burlington	73%	3,082	-2,959	-96%	761	-136	-18%
Berlin Twp	Camden	16%	344	59	17%	5,122	-235	-5%
Chesilhurst	Camden	100%	1,526	-6	0%			
Waterford	Camden	100%	10,940	-446	-4%			
Winslow	Camden	81%	15,426	173	1%	14,661	4,351	30%
Dennis	Cape May	38%	1,536	87	6%	4,038	831	21%
Upper	Cape May	33%	1,133	42	4%	9,548	1,392	15%
Woodbine	Cape May	95%	2,678	38	1%			
Maurice River	Cumberland	69%	4,392	427	10%	2,256	-147	-7%
Franklin	Gloucester	36%	2,531	133	5%	11,951	851	7%
Monroe	Gloucester	69%	15,122	-716	-5%	11,581	2,980	26%
Barnegat	Ocean	56%	2,701	525	19%	9,552	2,492	26%
Beachwood	Ocean	28%	65	-61	-94%	9,259	1,112	12%
Berkeley	Ocean	30%	865	1,602	185%	36,424	1,100	3%
Eagleswood	Ocean	20%	0	0	0%	1,476	-35	-2%
Jackson	Ocean	47%	4,124	-18	0%	29,108	9,602	33%
Lacey	Ocean	67%	563	-42	-7%	21,578	3,247	15%
Lakehurst	Ocean	87%	2,939	-546	-19%	139	-10	-7%
Little Egg Harbor	Ocean	23%	172	-65	-38%	13,158	2,680	20%
Manchester	Ocean	72%	10,589	1,596	15%	25,387	1,356	5%
Ocean	Ocean	41%	91	54	59%	5,325	980	18%
Plumsted	Ocean	53%	436	-24	-6%	5,569	1,294	23%
South Toms River	Ocean	48%	2,689	-194	-7%	1,210	-71	-6%
Stafford	Ocean	39%	5,739	7,651	133%	7,568	1,574	21%
"Outside" Munis								
Corbin City	Atlantic	1%	3	4	133%	409	52	13%
North Hanover	Burlington	4%	5,493	-2,403	-44%	4,560	-303	-7%
Springfield	Burlington	2%	123	-123	-100%	2,911	316	11%
Berlin Boro	Camden	10%	133	8	6%	5,539	469	8%
Vineland	Cumberland	7%	166	20	12%	54,614	1,471	3%

Table 5.6 Population and Housing for Pinelands RGA, Town, and Village Management Areas (Census Blocks)**

County	Municipality	Mngmnt Area	Place Name	Blocks	Pop 2000	Pop 1990	Pop Change	Percent Change	Househlds 2000	Housing Units 2000	Block Area (acres)	Mngmnt Area (acres)	Acres Difference	% Dif
Atlantic	Egg Harbor Twp	RGA	EHT (Cardiff) RGA	569	15,319	10,885	4,434	40.7%	5,417	5,752	13,208	13,242	-34	0%
Atlantic	Galloway	RGA	Galloway (East) RGA	223	4,667	3,917	750	19.1%	1,117	1,169	1,801	2,049	-248	12%
Atlantic	Galloway	RGA	Galloway (West) RGA	20	119	58	61	105.2%	56	68	1,139	1,323	-184	14%
Atlantic	Hamilton	RGA	Hamilton (Mays Landing) RGA	277	12,390	9,458	2,932	31.0%	4,442	4,727	8,606	9,106	-500	5%
Atlantic	Buena	Town	Buena-Landisville*	25	656	796	-140	-17.6%	215	231	455	501	-46	9%
Atlantic	Buena Vista	Town	Buena-Landisville*	2	133	115	18	15.7%	54	55	355	291	64	22%
Atlantic	Egg Harbor City	Town	Egg Harbor City*	425	4,432	4,515	-83	-1.8%	1,618	1,728	2,109	2,146	-37	2%
Atlantic	Galloway	Town	Egg Harbor City*	231	1,186	1,023	163	15.9%	523	553	2,196	2,340	-144	6%
Atlantic	Hammonton	Town	Hammonton*	290	10,562	10,346	216	2.1%	3,956	4,141	6,641	6,976	-334	5%
Atlantic	Mullica	Town	Hammonton*	8	99	59	40	67.8%	40	42	221	263	-42	16%
Atlantic	Buena Vista	Village	Collings Lakes	45	1,487	1,773	-286	-16.1%	491	518	288	365	-78	21%
Atlantic	Buena Vista	Village	Milmay*	14	49	39	10	25.6%	17	18	148	257	-109	43%
Atlantic	Buena Vista	Village	Newtonville	15	351	266	85	32.0%	87	100	263	415	-151	37%
Atlantic	Buena Vista	Village	Richland	20	371	426	-55	-12.9%	107	112	421	702	-281	40%
Atlantic	Estell Manor	Village	Estell Manor	7	567	528	39	7.4%	198	201	1,254	1,762	-508	29%
Atlantic	Folsom	Village	Folsom	10	253	418	-165	-39.5%	88	90	429	629	-200	32%
Atlantic	Galloway	Village	Cologne-Germania	19	508	450	58	12.9%	186	198	548	519	29	6%
Atlantic	Galloway	Village	Pomona	20	643	586	57	9.7%	225	236	211	394	-183	46%
Atlantic	Hamilton	Village	Mizpah	45	326	338	-12	-3.6%	112	120	514	653	-139	21%
Atlantic	Mullica	Village	Elwood	90	1,338	1,294	44	3.4%	413	438	1,455	1,662	-207	12%

County	Municipality	Mngmnt Area	Place Name	Blocks	Pop 2000	Pop 1990	Pop Change	Percent Change	Househlds 2000	Housing Units 2000	Block Area (acres)	Mngmnt Area (acres)	Acres Difference	% Dif
Atlantic	Mullica	Village	Nesco	9	333	270	63	23.3%	118	120	671	953	-282	30%
Atlantic	Mullica	Village	Sweetwater	31	546	511	35	6.8%	216	249	585	1,050	-465	44%
Atlantic	Mullica	Village	Weekstown	4	72	100	-28	-28.0%	27	27	221	370	-149	40%
Atlantic	Port Republic	Village	Port Republic	6	48	80	-32	-40.0%	19	19	131	287	-155	54%
Atlantic	Weymouth	Village	Belcoville	1	5	9	-4	-44.4%	2	3	46	42	4	9%
Atlantic	Weymouth	Village	Dorothy	32	812	732	80	10.9%	258	269	1,790	1,945	-156	8%
Burlington	Evesham	RGA	Evesham (Pine Grove) RGA	59	1,106	759	347	45.7%	326	331	932	670	262	39%
Burlington	Medford	RGA	Medford (Fairview - Taunton Lake) RGA	335	14,501	15,083	-582	-3.9%	4,994	5,085	8,112	8,467	-356	4%
Burlington	Medford Lakes	RGA	Medford Lakes RGA	174	3,815	4,201	-386	-9.2%	1,409	1,437	638	716	-78	11%
Burlington	Pemberton	RGA	Pemberton (Browns Mills) RGA	542	15,686	16,191	-505	-3.1%	5,572	5,974	4,501	5,355	-854	16%
Burlington	Pemberton	RGA	Pemberton (Pmbtn Heights) RGA +	61	3,925	4,411	-486	-11.0%	1,381	1,431	1,824	1,446	378	26%
Burlington	Shamong	RGA	Shamong RGA	39	2,248	2,213	35	1.6%	712	716	1,409	1,446	-37	3%
Burlington	Southampton	RGA	Southampton RGA	7	387	130	257	197.7%	127	130	1,040	889	151	17%
Burlington	Tabernacle	RGA	Tabernacle (Meadford Frm) RGA	65	3,463	3,537	-74	-2.1%	1,177	1,198	2,440	2,736	-297	11%
Burlington	Bass River	Village	New Gretna	18	563	503	60	11.9%	211	241	1,266	1,601	-336	21%
Burlington	Pemberton	Village	New Lisbon	10	56	115	-59	-51.3%	23	23	113	99	14	14%
Burlington	Shamong	Village	Indian Mills +	7	227	195	32	16.4%	79	79	265	376	-111	30%
Burlington	Southampton	Village	Vincentown!				0	#DIV/0!			0	20	-20	100%
Burlington	Tabernacle	Village	Tabernacle	4	109	88	21	23.9%	41	43	133	228	-95	42%
Burlington	Washington	Village	Green Bank	12	22	79	-57	-72.2%	11	13	294	404	-110	27%
Burlington	Washington	Village	Jenkins	2	16	2	14	700.0%	7	7	7	90	-84	93%

County	Municipality	Mngmnt Area	Place Name	Blocks	Pop 2000	Pop 1990	Pop Change	Percent Change	Househlds 2000	Housing Units 2000	Block Area (acres)	Mngmnt Area (acres)	Acres Difference	% Dif
Burlington	Washington	Village	Lower Bank	7	95	108	-13	-12.0%	37	38	454	728	-274	38%
Burlington	Woodland	Village	Chatsworth	22	165	182	-17	-9.3%	61	62	726	716	10	1%
Camden	Berlin Borough	RGA	Berlin Boro RGA	9	101	86	15	17.4%	42	45	194	230	-36	16%
Camden	Berlin Twp	RGA	Berlin Twp RGA	17	293	268	25	9.3%	100	104	127	163	-37	22%
Camden	Chesilhurst	RGA	Chesihurst RGA	77	1,518	1,535	-17	-1.1%	492	534	1,099	1,097	2	0%
Camden	Waterford	RGA	Waterford (Atco) RGA	162	5,982	6,312	-330	-5.2%	2,077	2,179	2,646	2,692	-45	2%
Camden	Winslow	RGA	Winslow (Florence) RGA	126	8,185	7,538	647	8.6%	2,792	2,955	6,998	6,518	480	7%
Camden	Waterford	Village	Waterford Works*	6	213	183	30	16.4%	70	72	387	209	178	85%
Camden	Winslow	Village	Blue Anchor	24	342	359	-17	-4.7%	114	118	570	657	-87	13%
Camden	Winslow	Village	Elm	4	68	93	-25	-26.9%	26	28	201	363	-162	45%
Camden	Winslow	Village	Tansboro +	5	395	406	-11	-2.7%	138	149	318	240	79	33%
Camden	Winslow	Village	Waterford Works*	18	279	328	-49	-14.9%	115	120	152	287	-135	47%
Camden	Winslow	Village	Winslow +	7	184	153	31	20.3%	66	71	244	308	-64	21%
Cape May	Woodbine	Town	Woodbine	116	2,701	2,637	64	2.4%	767	1,074	4,342	4,008	334	8%
Cape May	Dennis	Village	Belleplain +	9	197	218	-21	-9.6%	64	67	300	725	-424	59%
Cape May	Dennis	Village	Dennisville +	5	170	162	8	4.9%	62	65	322	375	-52	14%
Cape May	Dennis	Village	Eldora +	15	130	130	0	0.0%	50	55	1,674	279	1395	500%
Cape May	Dennis	Village	North Dennis	3	48	76	-28	-36.8%	18	18	126	191	-65	34%
Cape May	Upper	Village	Petersburg	2	94	78	16	20.5%	33	36	114	330	-216	66%
Cape May	Upper	Village	Tuckahoe	10	186	197	-11	-5.6%	76	78	160	236	-76	32%
Cumberland	Maurice River	Village	Milmay*	17	106	92	14	15.2%	40	42	624	755	-131	17%

County	Municipality	Mngmnt Area	Place Name	Blocks	Pop 2000	Pop 1990	Pop Change	Percent Change	Househlds 2000	Housing Units 2000	Block Area (acres)	Mngmnt Area (acres)	Acres Difference	% Dif
Cumberland	Maurice River	Village	Cumberland	4	80	69	11	15.9%	30	31	204	531	-328	62%
Cumberland	Maurice River	Village	Delmont	1	61	65	-4	-6.2%	22	24	403	287	116	40%
Cumberland	Maurice River	Village	Dorchester - Leesburg!				0				0	210	-210	100%
Cumberland	Maurice River	Village	Port Elizabeth	20	366	379	-13	-3.4%	146	158	876	881	-4	0%
Gloucester	Monroe	RGA	Monroe (Williamstown) RGA	176	10,813	11,204	-391	-3.5%	3,791	4,075	4,936	5,885	-949	16%
Ocean	Barnegat	RGA	Barnegat RGA	109	2,265	1,627	638	39.2%	912	969	2,637	3,046	-409	13%
Ocean	Beachwood	RGA	Beachwood RGA	28	4	65	-61	-93.8%	2	2	492	490	2	0%
Ocean	Berkeley	RGA	Berkeley RGA	1	21	5	16	320.0%	12	13	320	194	126	65%
Ocean	Jackson	RGA	Jackson (Whitesville) RGA	26	827	732	95	13.0%	313	327	2,723	2,683	41	2%
Ocean	Manchester	RGA	Manchester (Ridgeway) RGA	52	1,488	1,515	-27	-1.8%	959	1,067	1,861	1,835	27	1%
Ocean	South Toms River	RGA	South Toms River RGA	46	2,573	2,779	-206	-7.4%	779	811	391	367	25	7%
Ocean	Stafford	RGA	Stafford (Ocean Acres) RGA	257	13,023	5,449	7,574	139.0%	4,637	4,912	2,829	3,248	-419	13%
Ocean	Lakehurst	Town	Lakehurst	66	2,393	2,939	-546	-18.6%	803	889	469	524	-56	11%
Ocean	Manchester	Town	Whiting	284	9,040	7,406	1,634	22.1%	5,106	5,655	4,269	4,402	-133	3%
Ocean	Barnegat	Village	Brookville*	2	0	5	-5	-100.0%	0	1	53	64	-11	17%
Ocean	Jackson	Village	Cassville +	6	656	539	117	21.7%	221	232	1,224	781	444	57%
Ocean	Jackson	Village	Legler +	17	1,064	1,130	-66	-5.8%	472	503	1,583	1,239	344	28%
Ocean	Jackson	Village	Vanhiseville	3	168	181	-13	-7.2%	54	57	487	492	-6	1%
Ocean	Lacey	Village	Bamber Lake	29	215	223	-8	-3.6%	79	83	203	390	-187	48%
Ocean	Little Egg Harbor	Village	Warren Grove*	2	23	28	-5	-17.9%	6	7	30	126	-96	77%
Ocean	Manchester	Village	Beckerville +	5	40	186	-146	-78.5%	14	24	67	160	-93	58%

County	Municipality	Mngmnt Area	Place Name	Blocks	Pop 2000	Pop 1990	Pop Change	Percent Change	Househlds 2000	Housing Units 2000	Block Area (acres)	Mngmnt Area (acres)	Acres Difference	% Dif
Ocean	Ocean	Village	Brookville*	6	37	14	23	164.3%	14	16	224	273	-49	18%
Ocean	Stafford	Village	Warren Grove*	4	62	42	20	47.6%	23	24	94	212	-118	56%

** Census blocks were overlaid on management areas using ArcGIS and the population of census blocks that had their center in each selected growth area were counted as being part of that growth area. In some cases, manual selection was used to create a better approximation. A rough estimate of accuracy was calculated by subtracting the total area of the census blocks counted from the actual area of the management area. See the definitions in the population summary for more information. Results are illustrative and should be interpreted with caution (particularly data for villages).

*Management Area spans two municipalities. Data for management area was divided into two parts and calculated by municipality.

+ Manual selection of blocks was used for better approximation

! Management Area data could not be computed because area was too small to match with surrounding blocks.

Section 6 – Population Density

Table 6.1 Population Density for South Jersey Counties

	Land Area (sq miles)	1970	1980	1990	2000
Atlantic	561.07	312.0	346.0	399.8	450.1
Burlington	804.57	401.6	450.6	491.0	526.2
Camden	222.30	2,052.6	2,121.7	2,261.9	2,289.4
Cape May	255.19	233.4	322.4	372.6	401.0
Cumberland	489.30	248.1	271.5	282.1	299.3
Gloucester	324.72	531.8	615.7	708.6	784.3
Ocean	636.28	327.6	543.8	680.8	803.0
Salem	337.88	178.6	191.4	193.2	190.3
South Jersey	3,631.31	434.2	510.6	573.9	623.3

Table 6.2 Population Density for Pinelands Municipalities

Municipality	County	Land Area (sq miles)	2000	1990	1980	1970
Buena borough	Atlantic	7.60	509.1	584.3	479.2	432.0
Buena Vista township	Atlantic	41.42	179.8	184.8	168.0	102.3
Egg Harbor City	Atlantic	11.10	409.2	412.9	416.0	387.7
Egg Harbor township	Atlantic	67.27	456.2	364.9	288.1	146.9
Estell Manor city	Atlantic	53.56	29.6	26.2	15.8	10.1
Folsom borough	Atlantic	8.27	238.5	263.7	228.8	213.7
Galloway township	Atlantic	90.36	344.9	258.2	134.7	91.6
Hamilton township	Atlantic	111.26	184.2	143.9	85.4	57.9
Hammonton town	Atlantic	41.25	305.5	296.0	298.1	277.9
Mullica township	Atlantic	56.57	104.5	104.2	92.7	59.9
Port Republic city	Atlantic	7.73	136.0	128.3	108.3	75.8
Weymouth township	Atlantic	12.2	185.0	160.4	103.3	81.8
Bass River township	Burlington	75.86	19.9	20.8	17.7	10.7
Evesham township	Burlington	29.53	1,431.1	1,195.7	728.3	456.4
Medford Lakes borough	Burlington	1.21	3,463.1	3,687.6	4,097.5	3,960.3
Medford township	Burlington	39.31	566.0	522.2	448.3	210.9
New Hanover township	Burlington	22.28	437.3	428.5	639.9	1,230.3
Pemberton township	Burlington	61.74	465.2	507.6	481.4	320.0
Shamong township	Burlington	44.81	144.2	128.7	101.2	29.4
Southampton township	Burlington	44.09	235.9	231.4	199.8	113.0
Tabernacle township	Burlington	49.45	145.0	148.8	126.1	42.5
Washington township	Burlington	100.12	6.2	8.0	8.1	6.7
Woodland township	Burlington	95.92	12.2	21.5	23.8	21.2
Wrightstown borough	Burlington	1.75	425.1	2,196.0	1,732.0	1,553.7
Berlin township	Camden	3.25	1,628.9	1,681.8	1,645.5	1,751.4
Chesilhurst borough	Camden	1.72	885.8	887.2	924.4	465.7
Waterford township	Camden	36.18	290.0	302.4	224.6	112.6
Winslow township	Camden	57.68	599.9	521.6	347.3	194.2
Dennis township	Cape May	61.34	105.8	90.9	65.0	43.0
Upper township	Cape May	63.16	191.8	169.1	106.3	54.0
Woodbine borough	Cape May	8.00	339.6	334.8	351.1	328.1
Maurice River township	Cumberland	93.39	74.2	71.2	49.0	40.1
Franklin township	Gloucester	55.99	276.1	258.8	221.6	160.7
Monroe township	Gloucester	46.54	622.3	573.8	465.0	302.3
Barneгат township	Ocean	33.62	440.4	363.9	258.8	45.8
Beachwood borough	Ocean	2.76	3,757.3	3,378.3	2,785.1	1,590.6
Berkeley township	Ocean	42.89	932.3	870.1	539.8	184.6
Eagleswood township	Ocean	16.37	88.0	90.2	61.2	49.9
Jackson township	Ocean	100.03	427.9	332.2	256.4	182.7
Lacey township	Ocean	83.99	301.7	263.6	168.6	55.0
Lakehurst borough	Ocean	0.92	2,733.9	3,345.7	3,160.9	2,870.7
Little Egg Harbor township	Ocean	49.10	324.7	271.5	172.8	60.5
Manchester township	Ocean	82.59	471.3	435.6	338.9	91.4
Ocean township	Ocean	20.80	310.1	260.4	179.4	106.8
Plumsted township	Ocean	40.02	181.8	150.0	116.8	102.8
South Toms River borough	Ocean	1.15	3,131.9	3,364.3	3,438.3	3,461.7
Stafford township	Ocean	47.57	484.3	280.1	218.3	77.4
"Outside" Municipalities						
Corbin City	Atlantic	7.89	59.3	52.2	32.2	32.7
North Hanover township	Burlington	17.14	423.7	583.1	528.0	575.1
Springfield township	Burlington	30.04	107.4	100.8	89.6	74.7
Berlin borough	Camden	3.58	1,718.6	1,584.4	1,616.2	1,395.8
Vineland city	Cumberland	68.67	819.2	797.7	782.8	690.2

Section 7 – Households and Housing Units

Table 7.1 Households for Southern New Jersey Counties

	1970 Household	Change 1970 – 1980	Percent Change 70-80	1980 Household	Change 1980 – 1990	Percent Change 80-90	1990 Household	Change 1990 – 2000	Percent Change 90-00	2000 Household
Atlantic	60,716	11,090	18.3%	71,806	13,317	18.5%	85,123	9,901	11.6%	95,024
Burlington	84,788	30,102	35.5%	114,890	21,664	18.9%	136,554	17,817	13.0%	154,371
Camden	138,408	24,100	17.4%	162,508	16,250	10.0%	178,758	6,986	3.9%	185,744
Cape May	21,177	11,170	52.7%	32,347	5,509	17.0%	37,856	4,292	11.3%	42,148
Cumberland	37,086	7,201	19.4%	44,287	2,831	6.4%	47,118	2,025	4.3%	49,143
Gloucester	49,693	15,436	31.1%	65,129	13,716	21.1%	78,845	11,872	15.1%	90,717
Ocean	68,362	59,942	87.7%	128,304	39,843	31.1%	168,147	32,255	19.2%	200,402
Salem	NA	NA	NA	22,330	1,464	6.6%	23,794	501	2.1%	24,295

Table 7.2 Housing Units for Southern New Jersey Counties

	1970 Units	Change 1970 – 1980	Percent Change 70-80	1980 Units	Change 1980 – 1990	Percent Change 80-90	1990 Units	Change 1990 – 2000	Percent Change 90-00	2000 Units
Atlantic	73,848	15,494	21.0%	89,342	17,535	19.6%	106,877	7,213	6.7%	114,090
Burlington	88,175	33,056	37.5%	121,231	22,005	18.2%	143,236	18,075	12.6%	161,311
Camden	143,266	30,387	21.2%	173,653	16,492	9.5%	190,145	9,534	5.0%	199,679
Cape May	53,152	18,955	35.7%	72,107	13,430	18.6%	85,537	5,510	6.4%	91,047
Cumberland	40,005	7,340	18.3%	47,345	2,949	6.2%	50,294	2,569	5.1%	52,863
Gloucester	51,708	17,405	33.7%	69,113	13,346	19.3%	82,459	12,595	15.3%	95,054
Ocean	110,311	63,221	57.3%	173,532	46,331	26.7%	219,863	28,848	13.1%	248,711
Salem	19,598	4,567	23.3%	24,165	1,184	4.9%	25,349	809	3.2%	26,158

Table 7.3 Persons Per Household for Southern New Jersey Counties

	1970 PPH	1980 PPH	1990 PPH	2000 PPH	Change 1970 - 2000
Atlantic	2.82	2.66	2.57	2.59	- 8.2%
Burlington	3.41	3.01	2.79	2.65	- 22.3%
Camden	3.23	2.88	2.76	2.68	- 17.0%
Cape May	2.67	2.47	2.44	2.36	- 11.6%
Cumberland	3.15	2.91	2.79	2.73	- 13.3%
Gloucester	3.39	3.03	2.87	2.75	- 18.9%
Ocean	2.99	2.67	2.54	2.51	- 16.1%
Salem	3.17	2.86	2.68	2.59	- 18.3%

Table 7.4 Households for Pinelands Municipalities

Municipality	County	2000	1990	1980	Change 1990-2000	Change 1980-1990	Change 1980-2000
Buena	Atlantic	1,454	1,599	1,267	-9%	26%	15%
Buena Vista	Atlantic	2,648	2,614	2,085	1%	25%	27%
Egg Harbor City	Atlantic	1,658	1,680	1,695	-1%	-1%	-2%
Egg Harbor Twp	Atlantic	11,199	9,077	6,809	23%	33%	64%
Estell Manor	Atlantic	528	448	270	18%	66%	96%
Folsom	Atlantic	671	681	566	-1%	20%	19%
Galloway	Atlantic	10,772	7,944	3,915	36%	103%	175%
Hamilton	Atlantic	7,148	5,666	3,321	26%	71%	115%
Hammonton	Atlantic	4,619	4,411	4,099	5%	8%	13%
Mullica	Atlantic	2,044	1,903	1,626	7%	17%	26%
Port Republic	Atlantic	365	349	298	5%	17%	22%
Weymouth	Atlantic	851	704	418	21%	68%	104%
Bass River	Burlington	548	562	489	-2%	15%	12%
Evesham	Burlington	15,712	12,600	6,748	25%	87%	133%
Medford	Burlington	7,946	6,905	5,514	15%	25%	44%
Medford Lakes	Burlington	1,527	1,513	1,483	1%	2%	3%
New Hanover	Burlington	1,162	732	1,107	59%	-34%	5%
Pemberton Twp	Burlington	10,050	9,977	8,979	1%	11%	12%
Shamong	Burlington	2,132	1,801	1,343	18%	34%	59%
Southampton	Burlington	4,574	4,306	3,518	6%	22%	30%
Tabernacle	Burlington	2,346	2,258	1,808	4%	25%	30%
Washington	Burlington	160	284	271	-44%	5%	-41%
Woodland	Burlington	425	418	377	2%	11%	13%
Wrightstown	Burlington	312	1,220	986	-74%	24%	-68%
Berlin Twp	Camden	1,893	1,772	1,646	7%	8%	15%
Chesilhurst	Camden	493	463	467	6%	-1%	6%
Waterford	Camden	3,542	3,432	2,462	3%	39%	44%
Winslow	Camden	11,661	9,755	6,029	20%	62%	93%
Dennis	Cape May	2,159	1,797	1,268	20%	42%	70%
Upper	Cape May	4,266	3,731	2,361	14%	58%	81%
Woodbine	Cape May	773	664	613	16%	8%	26%
Maurice River	Cumberland	1,332	1,231	1,202	8%	2%	11%
Franklin	Gloucester	5,225	4,652	3,856	12%	21%	36%
Monroe	Gloucester	10,521	9,141	7,039	15%	30%	49%
Barnegat	Ocean	5,493	4,180	2,820	31%	48%	95%
Beachwood	Ocean	3,475	3,031	2,477	15%	22%	40%
Berkeley	Ocean	19,828	17,624	9,614	13%	83%	106%
Eagleswood	Ocean	546	524	362	4%	45%	51%
Jackson	Ocean	14,176	11,103	7,756	28%	43%	83%
Lacey	Ocean	9,336	8,048	5,107	16%	58%	83%
Lakehurst	Ocean	870	1,016	893	-14%	14%	-3%
Little Egg Harbor	Ocean	6,179	4,891	3,145	26%	56%	96%
Manchester	Ocean	20,688	18,635	13,863	11%	34%	49%
Ocean	Ocean	2,446	2,094	1,492	17%	40%	64%
Plumsted	Ocean	2,510	2,109	1,564	19%	35%	60%
South Toms River	Ocean	1,073	1,055	1,042	2%	1%	3%
Stafford	Ocean	8,535	5,113	3,789	67%	35%	125%
"Outside" Munis							
Corbin City	Atlantic	172	159	109	8%	46%	58%
North Hanover	Burlington	2,498	3,224	2,784	-23%	16%	-10%
Springfield	Burlington	1,098	1,026	844	7%	22%	30%
Berlin Boro	Camden	2,205	1,961	1,847	12%	6%	19%
Vineland	Cumberland	19,930	18,877	17,393	6%	9%	15%

Table 7.5 Housing Units for Pinelands Municipalities

Municipality	County	2000	1990	1980	Change 1990-2000	Change 1980-1990	Change 1980-2000
Buena	Atlantic	1,553	1,761	1,321	-12%	33%	18%
Buena Vista	Atlantic	2,827	2,727	2,226	4%	23%	27%
Egg Harbor City	Atlantic	1,770	1,750	1,807	1%	-3%	-2%
Egg Harbor Twp	Atlantic	12,067	10,018	7,727	20%	30%	56%
Estell Manor	Atlantic	546	455	313	20%	45%	74%
Folsom	Atlantic	702	710	607	-1%	17%	16%
Galloway	Atlantic	11,406	8,869	4,260	29%	108%	168%
Hamilton	Atlantic	7,567	6,343	3,706	19%	71%	104%
Hammonton	Atlantic	4,843	4,608	4,299	5%	7%	13%
Mullica	Atlantic	2,176	2,081	1,803	5%	15%	21%
Port Republic	Atlantic	389	372	343	5%	8%	13%
Weymouth	Atlantic	909	759	465	20%	63%	95%
Bass River	Burlington	602	615	639	-2%	-4%	-6%
Evesham	Burlington	16,324	13,268	7,075	23%	88%	131%
Medford	Burlington	8,147	7,116	5,743	14%	24%	42%
Medford Lakes	Burlington	1,555	1,567	1,521	-1%	3%	2%
New Hanover	Burlington	1,381	856	1,180	61%	-27%	17%
Pemberton Twp	Burlington	10,778	10,525	9,891	2%	6%	9%
Shamong	Burlington	2,175	1,841	1,430	18%	29%	52%
Southampton	Burlington	4,751	4,551	3,711	4%	23%	28%
Tabernacle	Burlington	2,385	2,311	1,898	3%	22%	26%
Washington	Burlington	171	328	353	-48%	-7%	-52%
Woodland	Burlington	448	435	464	3%	-6%	-3%
Wrightstown	Burlington	339	1,339	1,084	-75%	24%	-69%
Berlin Township	Camden	2,009	1,838	1,737	9%	6%	16%
Chesilhurst	Camden	535	501	498	7%	1%	7%
Waterford	Camden	3,671	3,564	2,582	3%	38%	42%
Winslow	Camden	12,413	10,493	6,505	18%	61%	91%
Dennis	Cape May	2,327	1,960	1,434	19%	37%	62%
Upper	Cape May	5,472	5,285	3,131	4%	69%	75%
Woodbine	Cape May	1,080	945	712	14%	33%	52%
Maurice River	Cumberland	1,461	1,412	1,365	3%	3%	7%
Franklin	Gloucester	5,461	4,878	4,088	12%	19%	34%
Monroe	Gloucester	11,069	9,622	7,619	15%	26%	45%
Barneгат	Ocean	6,066	4,902	3,409	24%	44%	78%
Beachwood	Ocean	3,623	3,244	2,678	12%	21%	35%
Berkeley	Ocean	22,288	19,873	11,698	12%	70%	91%
Eagleswood	Ocean	693	696	468	0%	49%	48%
Jackson	Ocean	14,640	11,833	8,156	24%	45%	79%
Lacey	Ocean	10,580	9,513	6,513	11%	46%	62%
Lakehurst	Ocean	961	1,087	1,050	-12%	4%	-8%
Little Egg Harbor	Ocean	7,931	7,194	4,958	10%	45%	60%
Manchester	Ocean	22,681	20,790	14,612	9%	42%	55%
Ocean	Ocean	2,981	2,828	2,260	5%	25%	32%
Plumsted	Ocean	2,628	2,200	1,657	19%	33%	59%
South Toms River	Ocean	1,123	1,133	1,096	-1%	3%	2%
Stafford	Ocean	11,522	8,298	6,597	39%	26%	75%
"Outside" Munis							
Corbin City	Atlantic	204	187	143	9%	31%	43%
North Hanover	Burlington	2,670	3,302	2,952	-19%	12%	-10%
Springfield	Burlington	1,138	1,066	907	7%	18%	25%
Berlin Borough	Camden	2,275	2,015	1,899	13%	6%	20%
Vineland	Cumberland	20,958	19,548	18,120	7%	8%	16%

Table 7.6 2000 Housing Units for Pinelands Municipalities Inside and Outside the Pinelands Boundary (Census Block Group)

County	Municipality	Total Units Inside 2000	% Housing Units Inside	% Housing Units Outside	Total Units Outside 2000
Atlantic	Buena	307	20%	80%	1,246
Atlantic	Buena Vista	2,234	79%	21%	593
Atlantic	Egg Harbor City	1,770	100%	0%	0
Atlantic	Egg Harbor Twp	6,155	53%	47%	5,502
Atlantic	Estell/Weymouth/Corbin	1,195	72%	28%	464
Atlantic	Folsom	702	100%	0%	0
Atlantic	Galloway	3,167	35%	65%	5,789
Atlantic	Galloway/PortRep	0	0%	100%	2,812
Atlantic	Hamilton	7,153	95%	5%	414
Atlantic	Hammonton	4,843	100%	0%	0
Atlantic	Mullica	2,176	100%	0%	0
Burlington	Bass River	610	100%	0%	0
Burlington	Evesham	5,465	33%	67%	10,971
Burlington	Medford	6,465	79%	21%	1,682
Burlington	Medford Lakes	1,555	100%	0%	0
Burlington	New Hanover	1,195	86%	14%	202
Burlington	Pemberton Twp	10,338	96%	4%	424
Burlington	Shamong	2,175	100%	0%	0
Burlington	Southampton	3,123	67%	33%	1,563
Burlington	Tabernacle	2,385	100%	0%	0
Burlington	Washington	163	100%	0%	0
Burlington	Woodland	447	100%	0%	0
Burlington	Wrightstown	19	6%	94%	320
Camden	Berlin Twp	0	0%	100%	2,009
Camden	Chesilhurst	535	100%	0%	0
Camden	Waterford	3,655	100%	0%	0
Camden	Winslow	5,622	45%	55%	6,804
Cape May	Dennis	726	31%	69%	1,583
Cape May	Upper	975	18%	82%	4,497
Cape May	Woodbine	1,080	100%	0%	0
Cumberland	Maurice River	731	50%	50%	730
Gloucester	Franklin	909	17%	83%	4,552
Gloucester	Monroe	5,629	51%	49%	5,440
Ocean	Barneгат	1,634	27%	73%	4,405
Ocean	Beachwood	459	13%	87%	3,127
Ocean	Berkeley	1,396	6%	94%	20,794
Ocean	Eagleswood	0	0%	100%	693
Ocean	Jackson	2,187	15%	85%	12,451
Ocean	Jackson/Manchester	83	100%	0%	0
Ocean	Lacey	191	2%	98%	10,389
Ocean	Lakehurst	961	100%	0%	0
Ocean	Little Egg Harbor	374	5%	95%	7,563
Ocean	Manchester	6,698	30%	70%	15,896
Ocean	Ocean	286	10%	90%	2,695
Ocean	Plumsted	0	0%	100%	2,628
Ocean	South Toms River	894	79%	21%	235
Ocean	Stafford	4,963	43%	57%	6,586
<i>"Outside" Municipalities</i>					
Burlington	North Hanover	929	35%	65%	1,721
Burlington	Springfield	0	0%	100%	1,138
Camden	Berlin Boro	0	0%	100%	2,275
Cumberland	Vineland	64	0%	100%	20,894

Table 7.7 Households and Housing Units for Pinelands Municipalities Inside and Outside the Pinelands Boundary (Census Blocks) 2000

Municipality	County	Househd 2000 Inside	% Inside	% Outside	Househd Outside 2000	Housing Units 2000 Inside	% Inside	% Outside	Housing Units Outside 2000
Buena Boro	Atlantic	284	20%	80%	1,170	308	20%	80%	1,245
Buena Vista	Atlantic	2,106	80%	20%	542	2,246	79%	21%	581
Egg Harbor City	Atlantic	1,658	100%	0%	0	1,770	100%	0%	0
Egg Harbor Twp	Atlantic	5,798	52%	48%	5,401	6,169	51%	49%	5,898
Estell Manor City	Atlantic	501	96%	4%	22	517	96%	4%	24
Folsom	Atlantic	671	100%	0%	0	702	100%	0%	0
Galloway	Atlantic	3,042	28%	72%	7,730	3,194	28%	72%	8,212
Hamilton	Atlantic	6,665	93%	7%	483	7,054	93%	7%	513
Hammonton	Atlantic	4,619	100%	0%	0	4,843	100%	0%	0
Mullica	Atlantic	2,044	100%	0%	0	2,176	100%	0%	0
Port Republic	Atlantic	33	9%	91%	332	35	9%	91%	354
Weymouth	Atlantic	624	73%	27%	232	663	73%	27%	251
Bass River	Burlington	455	83%	17%	93	506	84%	16%	96
Evesham	Burlington	4,458	28%	72%	11,254	4,596	28%	72%	11,728
Medford Lakes	Burlington	1,527	100%	0%	0	1,555	100%	0%	0
Medford Twp	Burlington	6,205	78%	22%	1,741	6,324	78%	22%	1,823
New Hanover	Burlington	946	81%	19%	216	1,159	84%	16%	222
Pemberton Twp	Burlington	9,823	98%	2%	227	10,538	98%	2%	240
Shamong	Burlington	2,132	100%	0%	0	2,175	100%	0%	0
Southampton	Burlington	3,342	73%	27%	1,232	3,471	73%	27%	1,280
Tabernacle	Burlington	2,346	100%	0%	0	2,385	100%	0%	0
Washington	Burlington	160	100%	0%	0	171	100%	0%	0
Woodland	Burlington	425	100%	0%	0	448	100%	0%	0
Wrightstown	Burlington	59	19%	81%	253	63	19%	81%	276
Berlin Twp	Camden	138	7%	93%	1,755	142	7%	93%	1,867
Chesilhurst	Camden	493	100%	0%	0	535	100%	0%	0
Waterford	Camden	3,542	100%	0%	0	3,671	100%	0%	0
Winslow	Camden	5,199	45%	55%	6,462	5,546	45%	55%	6,867
Dennis	Cape May	525	24%	76%	1,634	552	24%	76%	1,775
Upper Twp	Cape May	395	9%	91%	3,871	414	8%	92%	5,058
Woodbine	Cape May	773	100%	0%	0	1,080	100%	0%	0
Maurice River	Cumberland	539	40%	60%	793	572	39%	61%	889
Franklin	Gloucester	868	17%	83%	4,357	898	16%	84%	4,563
Monroe	Gloucester	5,127	49%	51%	5,394	5,493	50%	50%	5,576
Barnegat	Ocean	1,517	28%	72%	3,976	1,661	27%	73%	4,405
Beachwood	Ocean	2	0%	100%	3,473	2	0%	100%	3,621
Berkeley	Ocean	1,394	7%	93%	18,434	1,422	6%	94%	20,866
Eagleswood	Ocean	0	0%	100%	546	0	0%	100%	693
Jackson	Ocean	1,573	11%	89%	12,603	1,670	11%	89%	12,970
Lacey	Ocean	178	2%	98%	9,158	188	2%	98%	10,392
Lakehurst	Ocean	803	92%	8%	67	889	93%	7%	72
Little Egg Harbor	Ocean	37	1%	99%	6,142	39	0%	100%	7,892
Manchester	Ocean	6,740	33%	67%	13,948	7,494	33%	67%	15,187
Ocean	Ocean	45	2%	98%	2,401	47	2%	98%	2,934
Plumsted	Ocean	148	6%	94%	2,362	154	6%	94%	2,474
South Toms River	Ocean	754	70%	30%	319	783	70%	30%	340
Stafford	Ocean	4,673	55%	45%	3,862	4,936	43%	57%	6,586
<i>"Outside" Munis</i>									
Corbin City	Atlantic	2	1%	99%	170	5	2%	98%	199
North Hanover	Burlington	873	35%	65%	1,625	949	36%	64%	1,721
Springfield	Burlington	0	0%	100%	1,098	0	0%	100%	1,138
Berlin Boro	Camden	57	3%	97%	2,148	64	3%	97%	2,211
Vineland	Cumberland	59	0%	100%	19,871	62	0%	100%	20,896

Table 7.8 Year Structure Built as of 2000 (Census Block Group) by Region*

	Total Units	1990s	1980s	1970s	1960s	1950s	1940s	Before 1940
New Jersey	3,310,275	346,126	409,978	462,740	526,732	565,847	332,806	666,046
South Jersey	988,913	133,063	160,688	193,775	163,267	139,648	67,728	130,744
Pinelands Municipalities	248,975	45,312	61,938	67,129	32,578	19,707	7,811	14,500
Non-Pinelands Munis	739,938	87,751	98,750	126,646	130,689	119,941	59,917	116,244
New Jersey		10.5%	12.4%	14.0%	15.9%	17.1%	10.1%	20.1%
South Jersey		13.5%	16.2%	19.6%	16.5%	14.1%	6.8%	13.2%
Pinelands Municipalities		18.2%	24.9%	27.0%	13.1%	7.9%	3.1%	5.8%
Non-Pinelands Munis		11.9%	13.3%	17.1%	17.7%	16.2%	8.1%	15.7%

Table 7.9 Year Structure Built as of 2000 (Census Block Group) by County*

	Total Units	1990s	1980s	1970s	1960s	1950s	1940s	Before 1940
Atlantic	114,090	13,861	21,418	20,112	18,678	15,153	8,046	16,822
Burlington	161,311	26,567	25,620	32,103	28,884	21,774	7,282	19,081
Camden	199,679	16,754	23,058	33,132	34,358	34,428	20,392	37,557
Cape May	91,047	12,635	16,855	15,791	12,669	12,849	7,206	13,042
Cumberland	52,863	5,199	5,251	9,118	8,524	8,455	4,899	11,417
Gloucester	95,054	16,657	15,211	16,998	13,431	13,728	5,636	13,393
Ocean	248,711	39,504	51,068	61,770	43,345	28,948	11,002	13,074
Salem	26,158	1,886	2,207	4,751	3,378	4,313	3,265	6,358
Atlantic		12.1%	18.8%	17.6%	16.4%	13.3%	7.1%	14.7%
Burlington		16.5%	15.9%	19.9%	17.9%	13.5%	4.5%	11.8%
Camden		8.4%	11.5%	16.6%	17.2%	17.2%	10.2%	18.8%
Cape May		13.9%	18.5%	17.3%	13.9%	14.1%	7.9%	14.3%
Cumberland		9.8%	9.9%	17.2%	16.1%	16.0%	9.3%	21.6%
Gloucester		17.5%	16.0%	17.9%	14.1%	14.4%	5.9%	14.1%
Ocean		15.9%	20.5%	24.8%	17.4%	11.6%	4.4%	5.3%
Salem		7.2%	8.4%	18.2%	12.9%	16.5%	12.5%	24.3%

Table 7.10 Year Structure Built by as of 2000 by Pinelands Municipal Census Block Groups Inside and Outside the Pinelands Boundary*

	Total Units	1990s	1980s	1970s	1960s	1950s	1940s	Before 1940
Pinelands Municipal Area Inside Boundary	104,623	18,673	20,018	28,900	13,682	10,297	4,365	8,688
Pinelands Municipal Area Outside Boundary	171,087	29,907	44,792	43,249	23,895	13,899	5,471	9,874
Pinelands Municipal Area Inside Boundary		17.8%	19.1%	27.6%	13.1%	9.8%	4.2%	8.3%
Pinelands Municipal Area Outside Boundary		17.5%	26.2%	25.3%	14.0%	8.1%	3.2%	5.8%

* Unlike all of the other data compiled in this document, data on Year Structure Built is not tabulated from a 100% count from the Census Short Form. It is from the Census Long Form and is derived from a 1 in 6 sample.

Table 7.11 Year Structure Built as of 2000 by Pinelands Municipality

County	Municipality	Total Units	1990s	1980s	1970s	1960s	1950s	1940s	Before 1940
Atlantic	Buena	1,553	10.1%	11.9%	10.4%	16.9%	20.8%	8.0%	21.9%
Atlantic	Buena Vista	2,827	9.7%	16.0%	20.5%	17.1%	20.1%	6.4%	10.3%
Atlantic	Egg Harbor City	1,770	2.4%	6.6%	9.7%	10.2%	21.0%	15.4%	34.7%
Atlantic	Egg Harbor Twp	12,046	23.0%	23.0%	28.2%	14.1%	5.8%	2.1%	3.8%
Atlantic	Estell Manor	554	18.2%	27.6%	22.4%	6.7%	9.6%	4.9%	10.6%
Atlantic	Folsom	702	6.4%	8.0%	39.2%	20.4%	12.1%	5.1%	8.8%
Atlantic	Galloway	11,388	28.6%	38.1%	12.7%	7.9%	5.7%	1.8%	5.2%
Atlantic	Hamilton	7,567	20.9%	30.5%	20.3%	10.0%	6.1%	3.6%	8.6%
Atlantic	Hammonton	4,843	8.7%	10.6%	12.8%	13.9%	14.5%	10.6%	28.9%
Atlantic	Mullica	2,176	15.9%	15.4%	20.4%	13.8%	14.5%	8.6%	11.4%
Atlantic	Port Republic	380	13.2%	12.9%	22.6%	7.1%	7.9%	10.8%	25.5%
Atlantic	Weymouth	901	24.4%	33.4%	12.8%	5.9%	5.9%	5.2%	12.4%
Burlington	Bass River	610	5.1%	11.6%	27.5%	14.4%	9.0%	8.9%	23.4%
Burlington	Evesham	16,436	25.0%	35.2%	21.3%	12.3%	4.4%	0.9%	1.1%
Burlington	Medford	8,147	15.4%	23.9%	34.4%	11.4%	7.1%	2.5%	5.3%
Burlington	Medford Lakes	1,555	4.7%	4.4%	11.4%	29.8%	32.7%	5.9%	11.2%
Burlington	New Hanover	1,397	6.9%	3.9%	17.4%	23.5%	35.9%	6.8%	5.6%
Burlington	Pemberton Twp	10,762	10.1%	10.8%	33.8%	20.8%	15.3%	5.0%	4.2%
Burlington	Shamong	2,175	14.8%	26.1%	40.9%	6.1%	6.3%	1.1%	4.7%
Burlington	Southampton	4,686	10.1%	20.1%	39.2%	11.3%	10.4%	2.2%	6.8%
Burlington	Tabernacle	2,385	12.1%	20.8%	42.0%	5.6%	10.0%	3.6%	5.9%
Burlington	Washington	163	2.5%	6.1%	17.8%	3.1%	31.3%	16.6%	22.7%
Burlington	Woodland	447	12.5%	15.7%	26.2%	17.4%	12.1%	6.0%	10.1%
Burlington	Wrightstown	339	2.1%	6.8%	21.8%	8.0%	29.2%	24.8%	7.4%
Camden	Berlin Twp	2,009	11.1%	12.4%	20.8%	23.3%	17.3%	5.1%	10.0%
Camden	Chesilhurst	535	4.5%	10.1%	40.4%	27.1%	5.4%	3.6%	9.0%
Camden	Waterford	3,655	14.6%	22.7%	29.9%	6.5%	8.3%	5.1%	12.9%
Camden	Winslow	12,426	23.0%	29.4%	27.1%	7.9%	3.8%	2.2%	6.7%
Cape May	Dennis	2,309	22.2%	25.4%	21.8%	6.3%	5.9%	3.0%	15.4%
Cape May	Upper	5,472	15.5%	36.4%	20.7%	11.6%	6.3%	2.0%	7.5%
Cape May	Woodbine	1,080	7.8%	14.3%	20.4%	21.4%	10.9%	7.0%	18.2%
Cumberland	Maurice River	1,461	10.6%	10.9%	11.4%	15.7%	11.5%	7.0%	32.9%
Gloucester	Franklin	5,461	15.1%	20.3%	22.4%	11.4%	13.2%	8.7%	8.9%
Gloucester	Monroe	11,069	21.4%	16.9%	26.9%	12.4%	11.4%	4.1%	7.0%
Ocean	Barneget	6,039	23.5%	29.4%	35.0%	4.5%	2.5%	0.9%	4.1%
Ocean	Beachwood	3,586	10.8%	17.5%	33.0%	13.7%	11.1%	3.7%	10.2%
Ocean	Berkeley	22,291	15.1%	37.5%	29.5%	8.2%	6.0%	1.6%	2.0%
Ocean	Eagleswood	693	7.8%	18.0%	18.6%	12.4%	11.7%	12.8%	18.6%
Ocean	Jackson	14,638	25.3%	24.1%	19.3%	20.5%	6.1%	2.6%	2.1%
Ocean	Lacey	10,580	14.4%	26.7%	32.4%	13.7%	7.8%	2.4%	2.5%
Ocean	Lakehurst	961	3.2%	8.9%	15.9%	15.9%	20.8%	18.8%	16.3%
Ocean	Little Egg Harbor	7,937	17.9%	25.9%	24.9%	24.4%	4.1%	0.3%	2.5%
Ocean	Manchester	22,677	14.7%	26.5%	43.1%	10.7%	2.7%	1.1%	1.2%
Ocean	Ocean	2,981	12.3%	15.4%	22.9%	25.8%	16.3%	3.7%	3.6%
Ocean	Plumsted	2,628	25.2%	13.3%	16.0%	11.5%	10.0%	9.6%	14.5%
Ocean	South Toms River	1,129	1.2%	4.3%	13.0%	49.5%	23.6%	4.3%	4.0%
Ocean	Stafford	11,549	30.6%	19.5%	25.7%	15.1%	5.0%	1.4%	2.6%
<i>"Outside" Municipalities</i>									
Atlantic	Corbin City	204	15.2%	18.6%	14.7%	8.8%	14.7%	6.9%	21.1%
Burlington	North Hanover	2,650	11.1%	18.6%	17.8%	20.7%	18.9%	5.2%	7.8%
Burlington	Springfield	1,138	19.5%	21.2%	11.7%	16.7%	13.5%	1.7%	15.7%
Camden	Berlin Borough	2,275	17.5%	5.4%	20.4%	17.4%	16.3%	5.5%	17.5%
Cumberland	Vineland	20,958	11.4%	10.1%	19.0%	18.7%	16.7%	8.4%	15.8%

Section 8 – Acreage

Table 8.1 Acreage by County for Pinelands and Non-Pinelands

County	Total Acreage	Acreage Inside the Pinelands	Acreage Outside the Pinelands	Proportion in the Pinelands	County Pinelands Acreage as a % of Total Pinelands Acreage
Atlantic	391,134	247,877	143,257	63.4%	26.4%
Burlington	524,166	334,187	189,979	63.8%	35.6%
Camden	145,593	54,915	90,678	37.7%	5.9%
Cape May	182,633	34,807	147,826	19.1%	3.7%
Cumberland	321,645	45,356	276,289	14.1%	4.8%
Gloucester	215,616	33,580	182,036	15.6%	3.6%
Ocean	485,569	187,490	298,079	38.6%	20.0%
Total	2,266,357	938,212	1,328,145	41.4%	100.0%

Table 8.2 Acreage and Management Area Acreage for Pinelands Municipalities *

COUNTY	MCD	Total Acreage	Outside Pinelands	Inside Pinelands	PA	FA	APA	SAPA	RDA	RGA	PT	PV	MFA
Atlantic	Buena	4,842	2,568	2,274			1,775				499		
Atlantic	Buena Vista	26,658	2,657	24,001		7,602	1,946		12,686		98	1,669	
Atlantic	Corbin City	5,727	5,660	67		67							
Atlantic	Egg Harbor City	7,627	0	7,627	2,893	2,634					2,100		
Atlantic	Egg Harbor Twp	48,444	30,296	18,148						14,276			3,872
Atlantic	Estell Manor	35,334	13,004	22,330		19,678	852					1,800	
Atlantic	Folsom	5,394	0	5,394		3,651	329		786			628	
Atlantic	Galloway	71,433	44,626	26,807	2,644	2,910	4,572		9,410	3,339	2,248	913	771
Atlantic	Hamilton	72,225	2,160	70,065		38,642	3,028		17,950	9,118		651	676
Atlantic	Hammonton	26,452	0	26,452	9,228	1,352	8,745				7,127		
Atlantic	Mullica	36,494	0	36,494	4,801	21,447	3,390		2,544		266	4,046	
Atlantic	Port Republic	5,500	3,590	1,910	1,615							295	
Atlantic	Weymouth	7,847	1,422	6,425		4,471						1,954	
Burlington	Bass River	50,197	6,582	43,615	41,499	168			305			1,643	
Burlington	Evesham	18,871	8,494	10,377		1,229			8,485	663			
Burlington	Medford	25,624	5,760	19,864	2,251	931	701	1,067	6,452	8,462			
Burlington	Medford Lakes	812	0	812					78	734			
Burlington	New Hanover	14,369	1,327	13,042									13,042
Burlington	North Hanover	10,948	10,476	472									472
Burlington	Pemberton Twp	40,220	3,625	36,595	8,122	5,703	8,717		2,529	7,086		99	4,339
Burlington	Shamong	28,796	0	28,796	19,438	267	4,309	463	2,445	1,565		309	
Burlington	Southampton	28,401	7,666	20,735		5,712	8,117		5,909	977		20	
Burlington	Springfield	18,842	18,562	280									280
Burlington	Tabernacle	31,818	0	31,818	16,440	879	3,575	4,807	3,341	2,551		225	
Burlington	Washington	66,007	0	66,007	56,578			8,203				1,226	
Burlington	Woodland	60,917	0	60,917	42,161			18,034				722	
Burlington	Wrightstown	1,256	336	920									920
Camden	Berlin Boro	2,321	2,096	225						225			

COUNTY	MCD	Total Acreage	Outside Pinelands	Inside Pinelands	PA	FA	APA	SAPA	RDA	RGA	PT	PV	MFA
Camden	Berlin Twp	2,105	1,768	337					275	62			
Camden	Chesilhurst	1,111	0	1,111						1,111			
Camden	Waterford	23,058	0	23,058	14,081	301	2,336		3,450	2,683		207	
Camden	Winslow	37,302	7,186	30,116	626	6,465	6,814		7,857	6,509		1,845	
Cape May	Dennis	40,978	25,433	15,545		13,091			886			1,568	
Cape May	Upper	43,784	29,553	14,231		11,804			1,861			566	
Cape May	Woodbine	5,123	242	4,881		627			157		4,097		
Cumberland	Maurice River	61,147	18,905	42,242		33,738			5,774			2,730	
Cumberland	Vineland	44,125	40,915	3,210		2,324	277		609				
Gloucester	Franklin	36,150	23,272	12,878			5,240		7,638				
Gloucester	Monroe	29,986	9,282	20,704		4,610	2,485		7,721	5,888			
Ocean	Barnegat	25,783	11,371	14,412	5,745	5,322				3,279		66	
Ocean	Beachwood	1,785	1,288	497						497			
Ocean	Berkeley	34,665	24,199	10,466	1,792	7,530			1,144				
Ocean	Dover	34,124	34,110	14							14		
Ocean	Eagleswood	12,079	9,609	2,470	1,068	1,402							
Ocean	Jackson	64,505	34,125	30,380	9,274	4,755			3,773	3,759		2,510	6,309
Ocean	Lacey	63,658	21,029	42,629	30,381	10,936			922			390	
Ocean	Lakehurst	634	82	552							529		23
Ocean	Little Egg Harbor	46,969	35,510	11,459	9,825	1,504						130	
Ocean	Manchester	53,701	14,952	38,749	17,966	9,440				1,826	4,426	160	4,931
Ocean	Ocean	20,259	12,019	8,240	28	4,779			3,161			272	
Ocean	Plumsted	25,363	11,896	13,467	259	673			639				11,896
Ocean	South Toms River	796	418	378						378			
Ocean	Stafford	34,966	21,247	13,719	733	9,675			87	3,016		208	

* PA = Preservation Area FA = Forest Area APA = Agricultural Production Area SAPA = Special Agricultural Production Area
 RDA = Rural Development Area RGA = Regional Growth Area PT = Pinelands Town PV = Pinelands Village
 MFA = Military or Federal Area

Figure 8.1 2000 Population for Southern New Jersey Counties

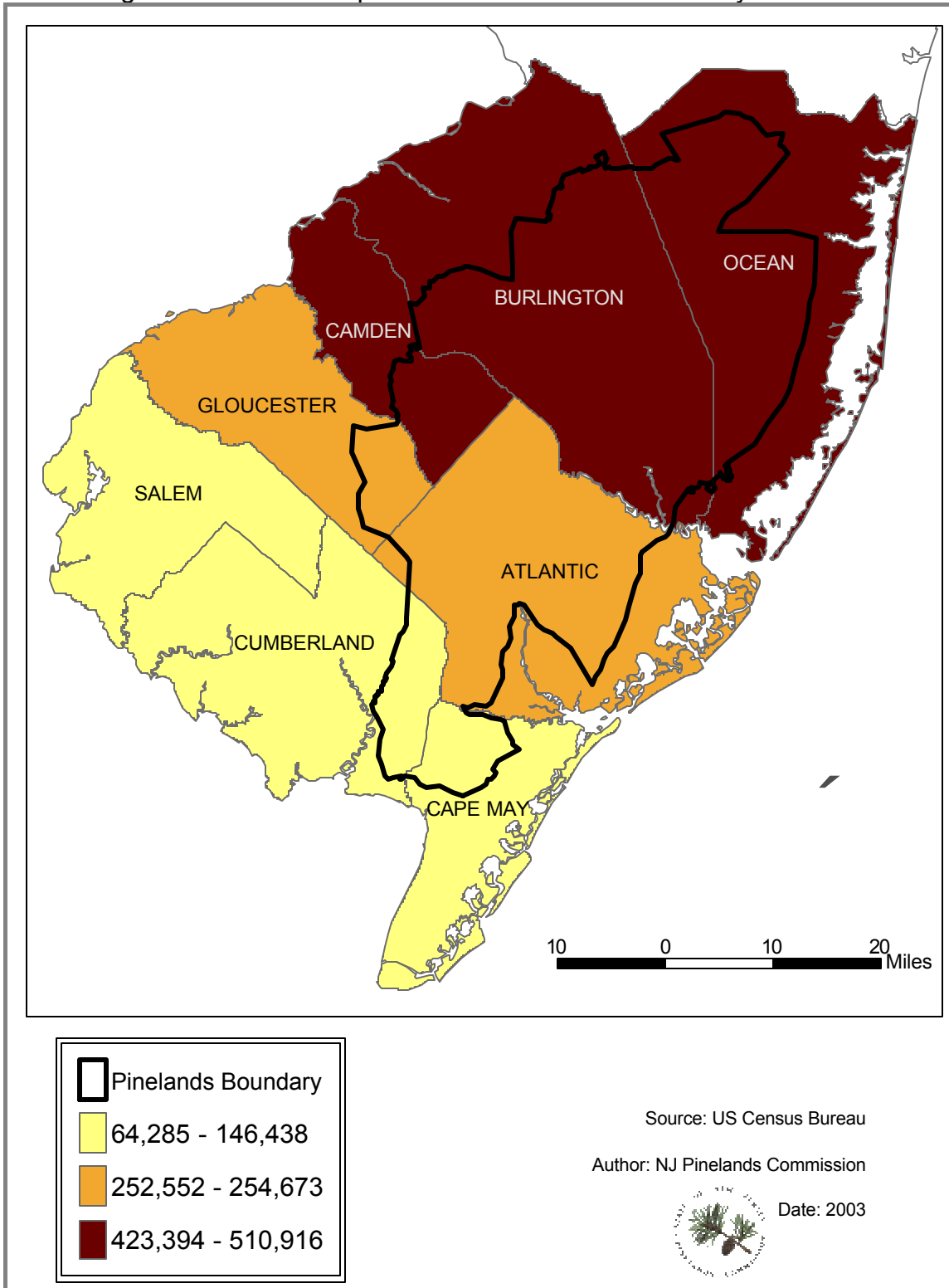


Figure 8.2 Municipalities of South Jersey

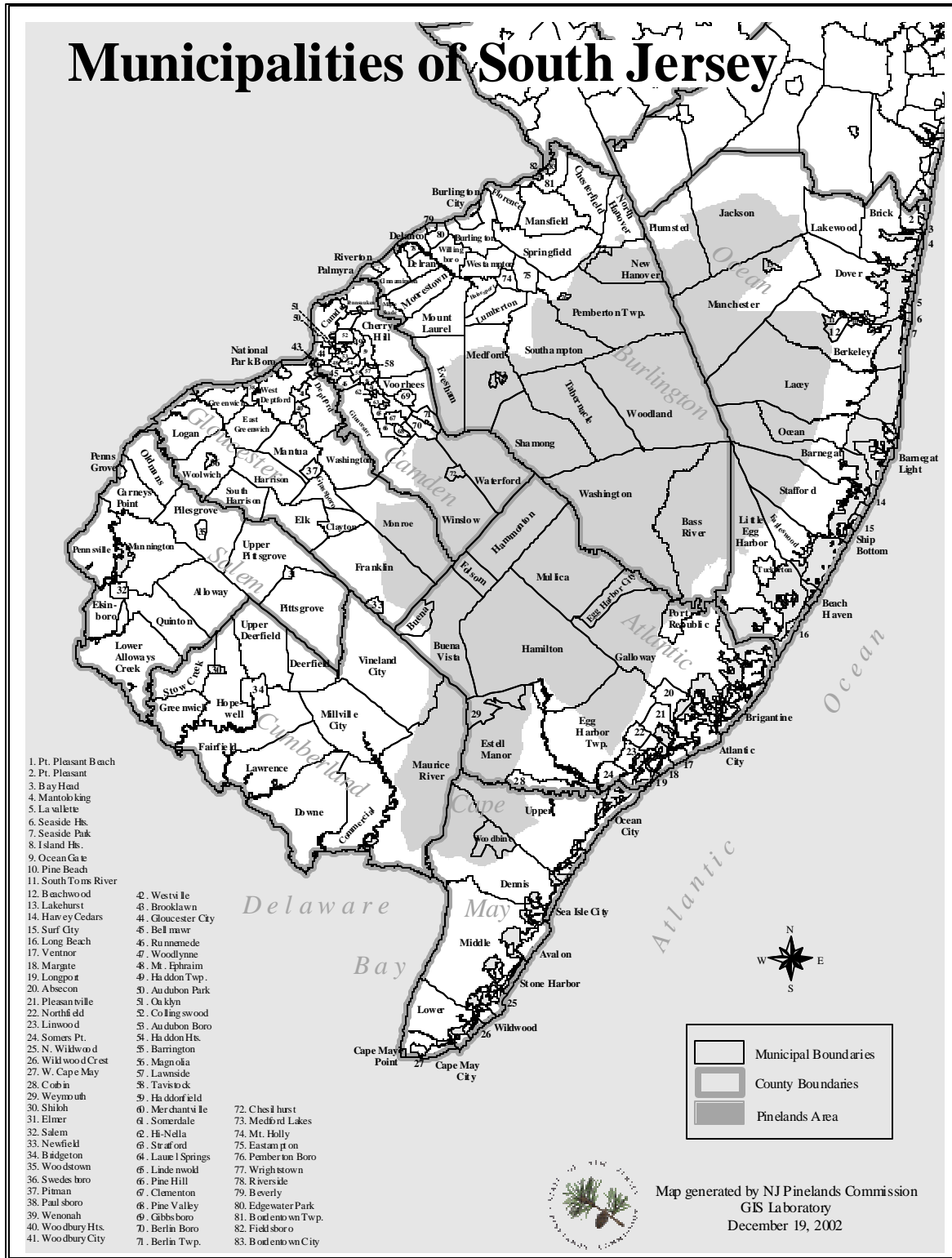


Figure 8.3 Municipal Population Change for Southern New Jersey 1990 - 2000

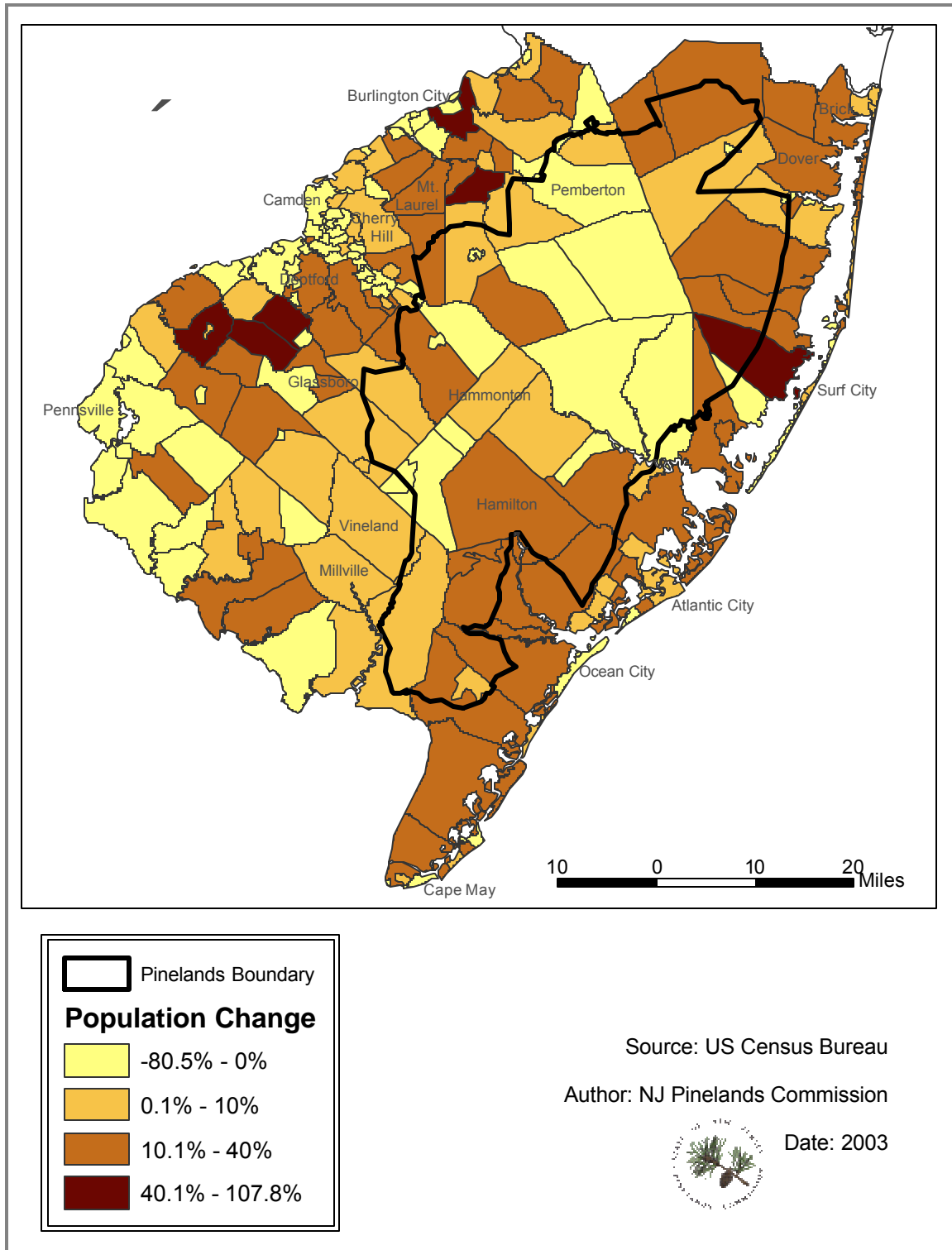


Figure 8.4 South Jersey Population Change 1980-1990 and 1990-2000 by Census Tract

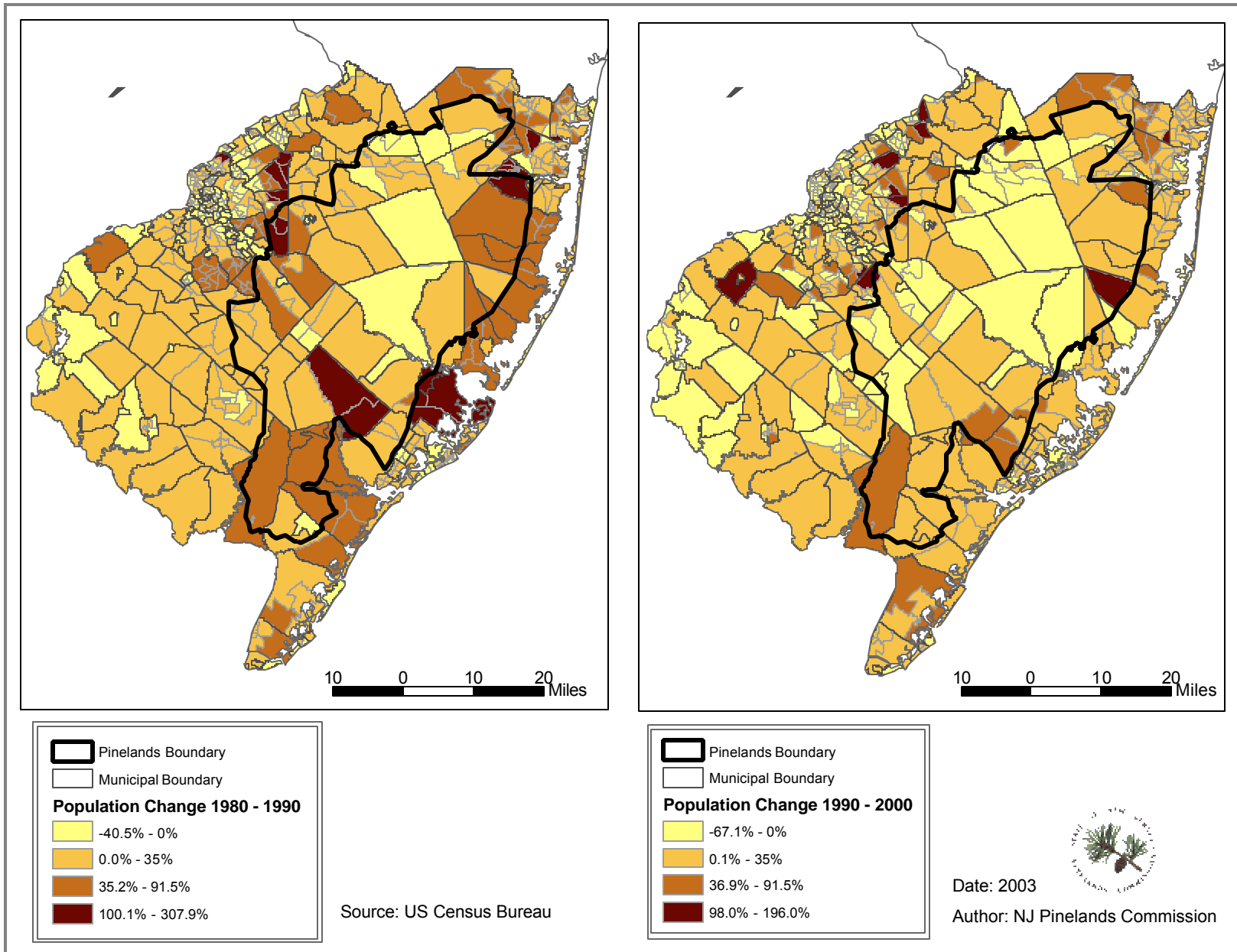


Figure 8.5 Pinelands Population Change (With Split Towns) 1980-1990 and 1990-2000 by Census Tract

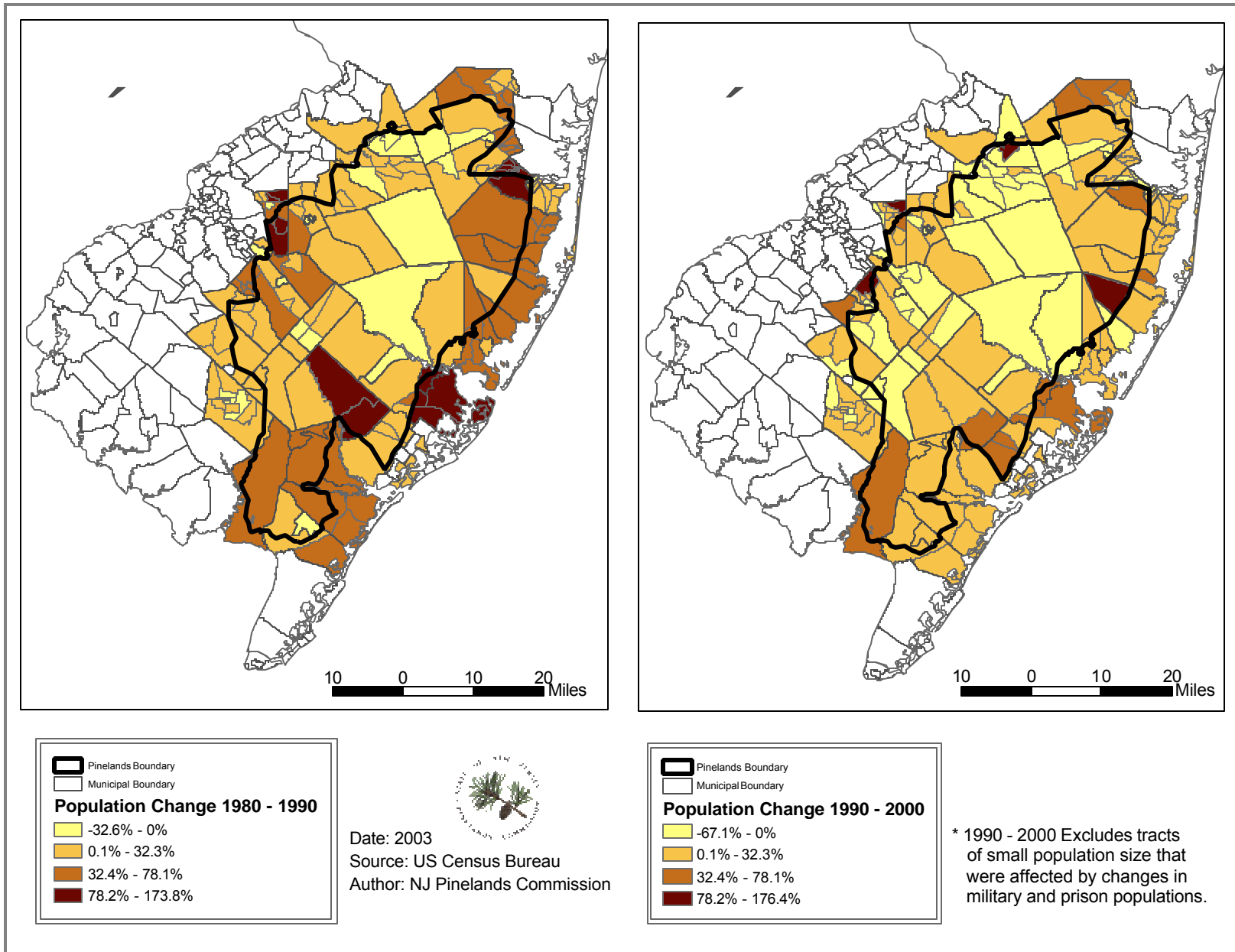


Figure 8.6 Pinelands Population Change 1980-1990 and 1990-2000 by Census Tract

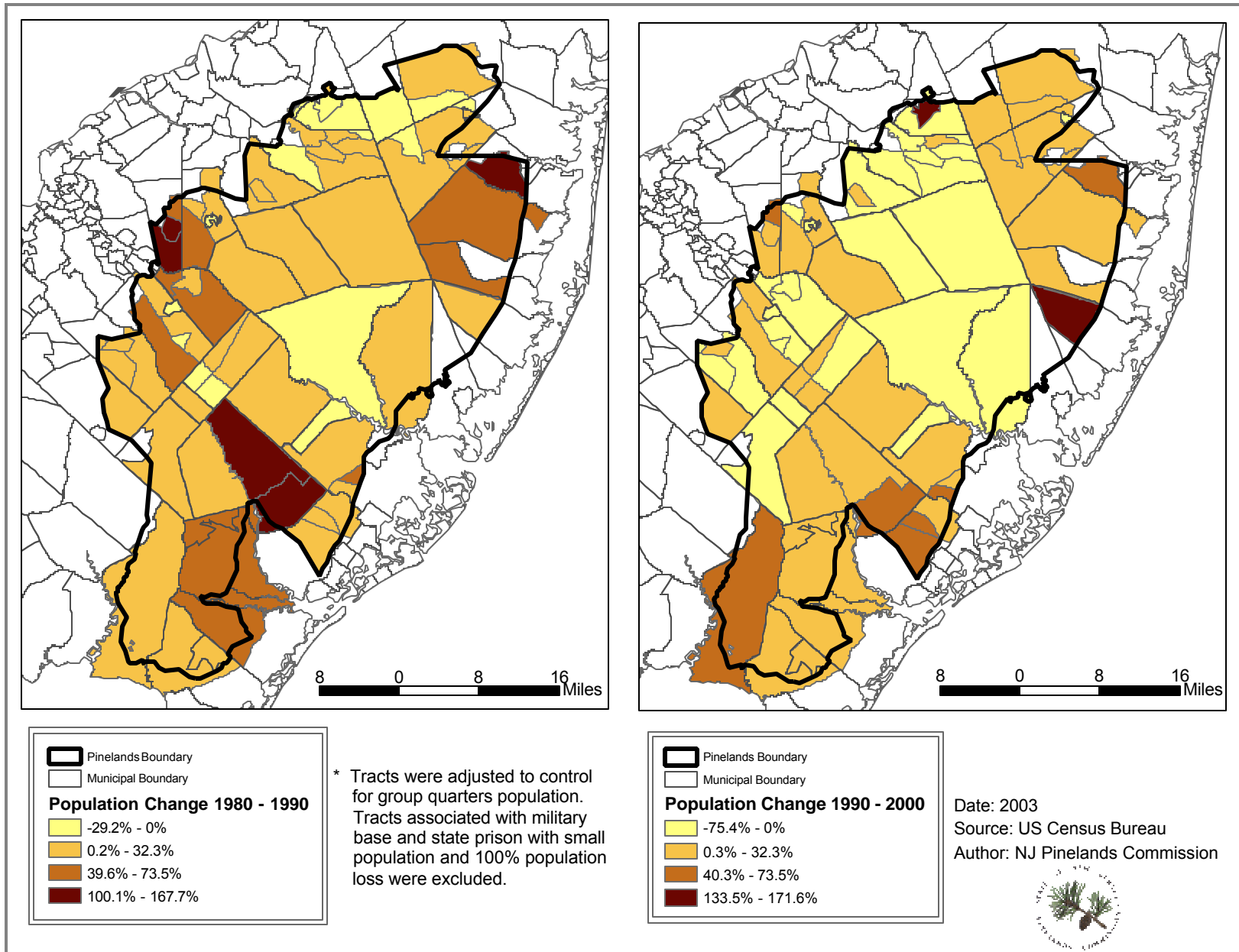


Figure 8.7 Pinelands Census Tracts

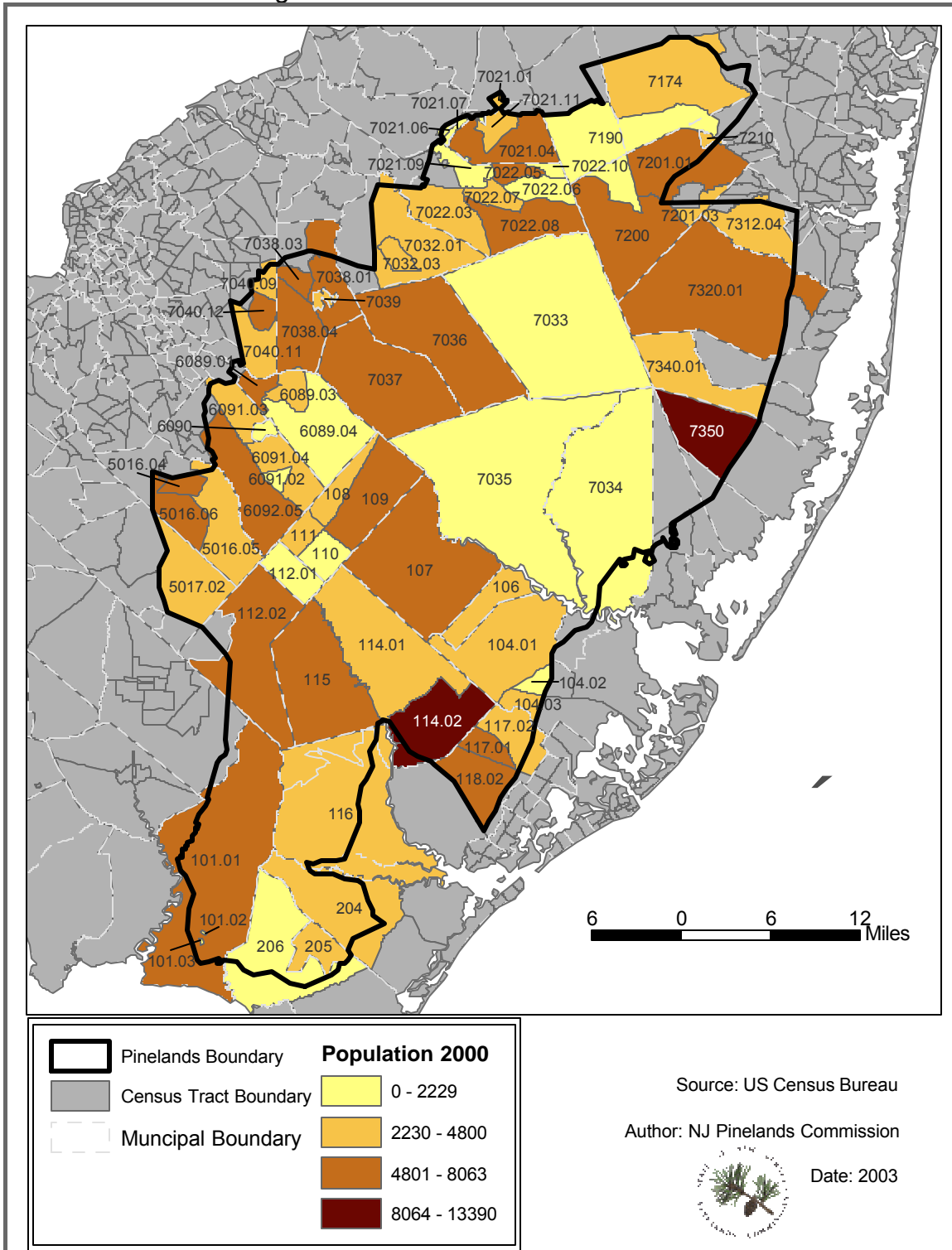


Figure 8.8 Pinelands Census Block Groups

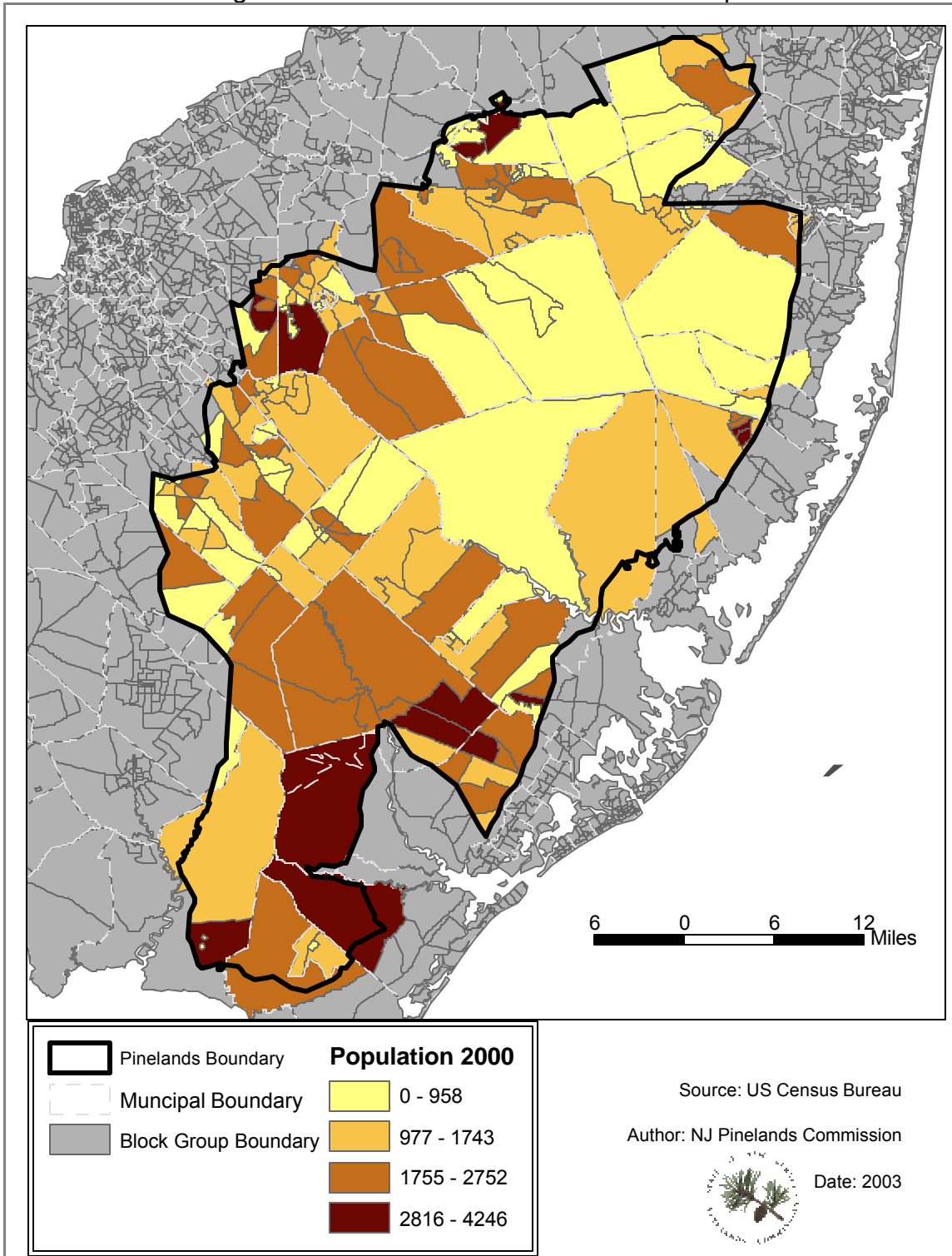


Figure 8.9 Pinelands Municipalities and Management Areas

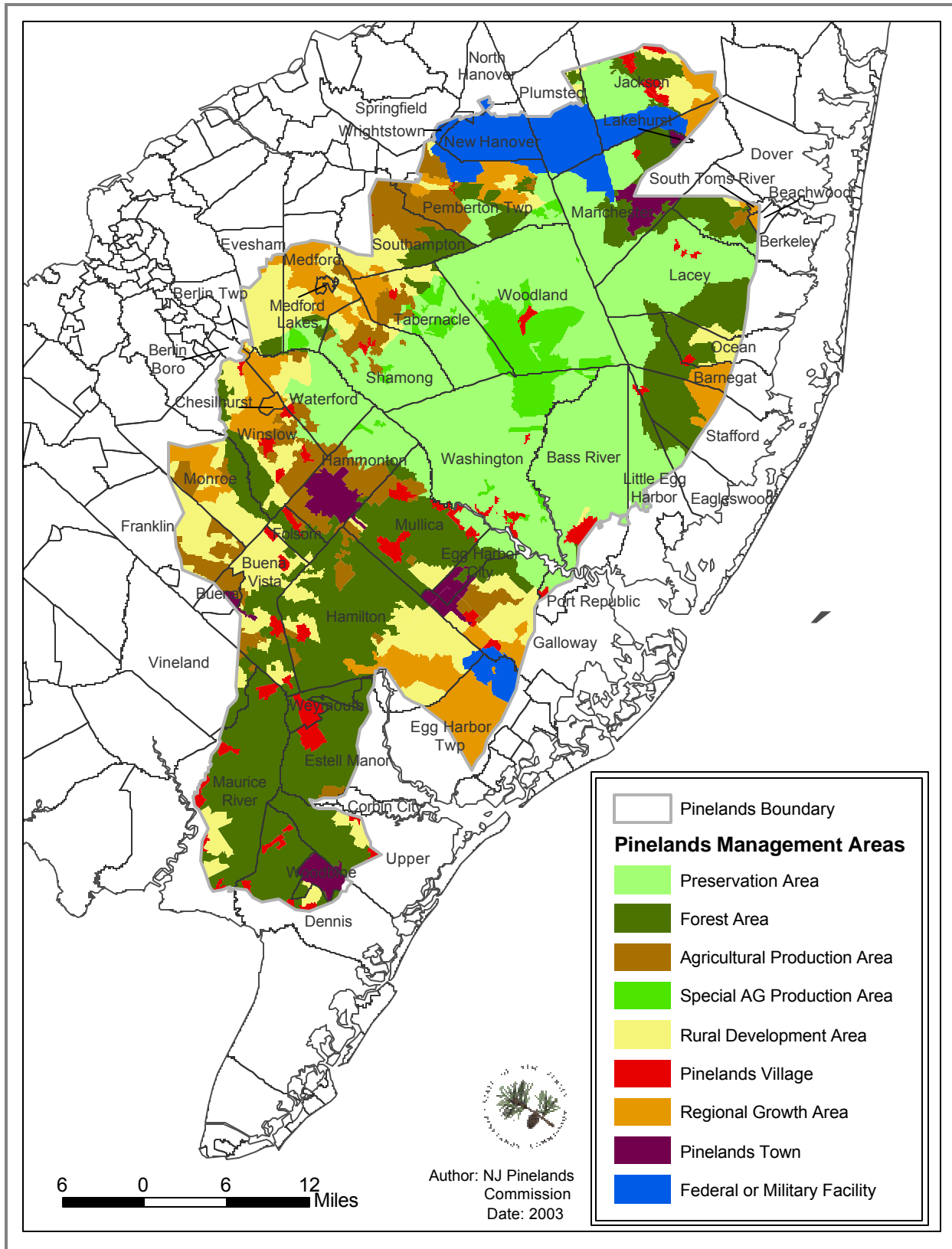


Figure 8.10 Pinelands RGAs, Towns, and Villages

