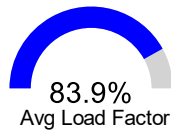


Revenue Passengers

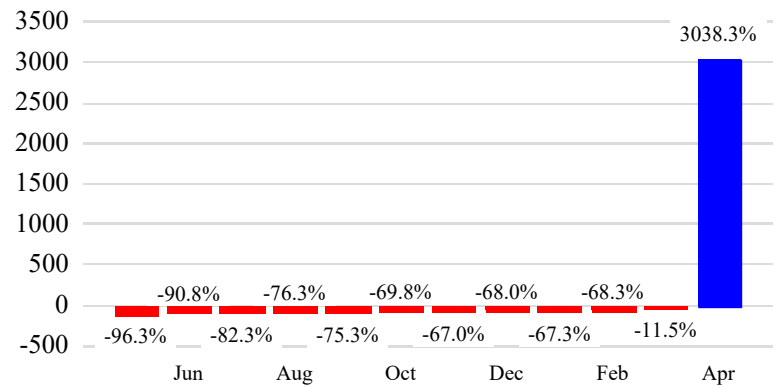
	<u>Curr Month</u>	<u>% Change</u>
	2,077,211	3038.3%
Domestic	1,714,836	3082.5%
International	362,375	2844.9%

Load Factors

	<u>Curr Month</u>
Domestic	92.7%
International	57.9%



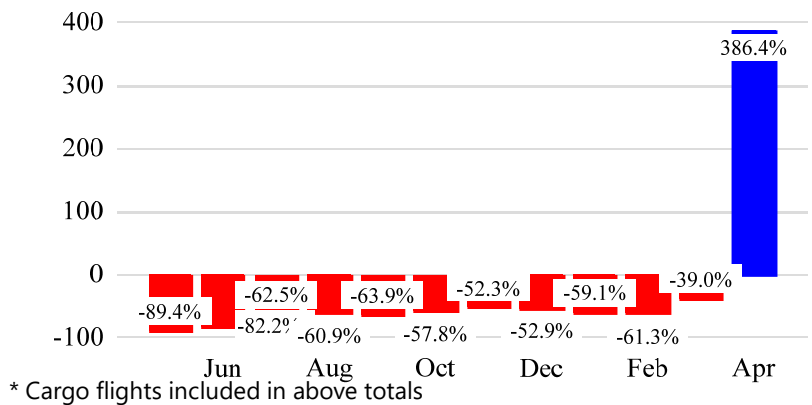
Year over Year % Change in Revenue Passengers - 12 Months



Total Flights

	<u>Curr Month</u>	<u>% Change</u>
	20,867	371.7%
Excl GA	20,642	386.4%
Domestic	17,165	358.1%
International	3,477	599.6%
Gen Aviation	225	25.0%
Cargo Flights*	1,619	-2.2%

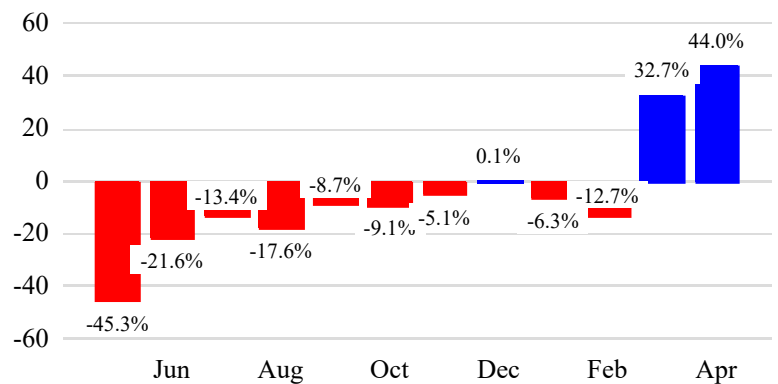
Year over Year % Change in Total Flights (Excl GA) - 12 Months



Cargo (Short Tons)

	<u>Curr Month</u>	<u>% Change</u>
	61,069	44.0% ▲
Domestic	41,734	23.9%
International	19,335	122.0%
Mail	4,291	137.7%

Year over Year % Change in Cargo - 12 Months



Top 5 Declines in Revenue Passengers by Airline

Airline	Pax Decline	% Decline
---------	-------------	-----------

Top 5 Increases in Revenue Passengers by Airline

Airline	Pax Increase	% Increase
UNITED	1,246,882	3357.6%
JETBLUE AIRWAYS	301,163	3316.0%
SPIRIT AIRLINES	124,568	0.0%
AMERICAN	122,214	1594.9%
DELTA	75,294	1326.3%

12 Months Ending Passenger & Freight Statistics

Top 20 Airlines Ranking by Passengers & Freight: 12 Months Ending Apr 2021

Airline Name	Domestic	International	Total Pax	% of Tot	Airline Name	Short Tons	% of Tot
UNITED	6,019,178	1,676,975	7,696,153	59.7%	FEDERAL EXPRESS	340,516	47.2%
JETBLUE AIRWAYS	1,438,848	305,020	1,743,868	13.5%	UNITED	168,488	23.4%
SPIRIT AIRLINES	1,041,416	2,236	1,043,652	8.1%	UNITED PARCEL	150,867	20.9%
AMERICAN	919,761	-	919,761	7.1%	KALITTA AIR LLC	20,035	2.8%
DELTA	582,832	60	582,892	4.5%	SWISS INT'L AIR LINES LTD	6,087	0.8%
FRONTIER AIRLINES	267,912	1,587	269,499	2.1%	AIR PORTUGAL(TAP)	5,838	0.8%
ALASKA AIRLINES	165,791	-	165,791	1.3%	SAS	5,768	0.8%
AIR INDIA	-	97,377	97,377	0.8%	LUFTHANSA	5,518	0.8%
AIR CANADA	-	83,994	83,994	0.7%	EMIRATES AIRLINES	2,653	0.4%
LUFTHANSA	-	58,302	58,302	0.5%	CARGOJET AIRWAYS	2,617	0.4%
AIR PORTUGAL(TAP)	-	51,726	51,726	0.4%	AMERIJET INTERNAT'L	2,562	0.4%
ALLEGIAN AIR	44,173	-	44,173	0.3%	AIR INDIA	2,023	0.3%
ETHIOPIAN AIRLINES	-	40,272	40,272	0.3%	AUSTRIAN AIRLINES	1,219	0.2%
AUSTRIAN AIRLINES	-	27,823	27,823	0.2%	ATLAS AIR	1,128	0.2%
SWISS INT'L AIR LINES LTD	-	27,234	27,234	0.2%	DELTA	1,087	0.2%
SAS	-	19,602	19,602	0.2%	ETHIOPIAN AIRLINES	821	0.1%
MN AIRLINES D/B/A SUN COUNTRY	11,241	-	11,241	0.1%	WIGGINS AIRWAYS	731	0.1%
EL AL	-	5,677	5,677	0.0%	AMERICAN	686	0.1%
ELITE AIRWAYS	5,140	-	5,140	0.0%	ALASKA AIRLINES	578	0.1%
TACA INTERNATIONAL	-	1,938	1,938	0.0%	MOUNTAIN AIR CARGO	448	0.1%

Passengers & Freight by Market - 12 Months Ending

Market	Passengers	Freight (Short Tons)
TRANSATLANTIC	902,706	165,198
CANADA	85,722	20
CARIBBEAN + BERMUDA	888,198	5,961
CENTRAL AND SOUTH AMERICA	210,764	6,144
DOMESTIC	10,042,365	522,333
MEXICO	296,321	767
TRANSPACIFIC	17,579	16,786
PUERTO RICO	454,324	3,477

Additional Data

Airline Schedules (ADI): Non-Stop Destinations

	Region	Flights (Daily)	Cities
Domestic	Domestic	427.9	58
	Puerto Rico	12.1	1
	Total	440.1	59
International	Canada	8.0	2
	Caribbean & Bermuda	39.4	10
	Central & South America	13.9	9
	Mexico	11.3	4
	Trans-Atlantic	29.9	16
	Trans-Pacific	1.4	1
	Total	103.8	42
	Total	543.9	101

Airline Schedules (ADI): Carriers & Aircraft Type

	Aircraft Type	Flights (Daily)	Carriers
Domestic	Commuter	144.4	4
	Narrow Body	284.5	8
	Wide Body	11.2	1
	Total	440.1	13
International	Commuter	6.9	2
	Narrow Body	63.6	4
	Wide Body	33.3	9
	Total	103.8	15
Total	Total	543.9	28

Passenger Demographics (ACI ASQ Surveys - 2019)

Connect

Local Origin/Destination	76.2%
Connecting	23.8%

Transport Mode

Bus/Shuttle	10.1%
Other	15.1%
Private/Company Car	36.4%
Rail/Subway	8.0%
Rental Car	6.9%
Taxi/Limo	23.5%

Gender

F	54.2%
M	45.8%

Trip Type

Business	26.2%
Leisure	73.8%

Annual Flights

1-2	34.5%
3-5	32.5%
6-10	18.0%
11-20	8.7%
21+	6.3%

Residency

United States	79.8%
Other	20.2%

Ground Transportation

	Curr Month	% Change
<i>Paid Parked Cars</i>	85,240	1,350.4
<i>GTC Bookings</i>	0	
<i>Airport Coach Passengers</i>	5,600	2,457.1
<i>Taxis Dispatched</i>	21,416	1,937.7

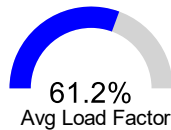
	Curr Month	% Change
<i>Total Air Train Passengers</i>	351,772	532.7
<i>Paid Passengers</i>	65,803	1,451.2
<i>On-Airport (Unpaid) Passengers</i>	285,969	456.8

Revenue Passengers

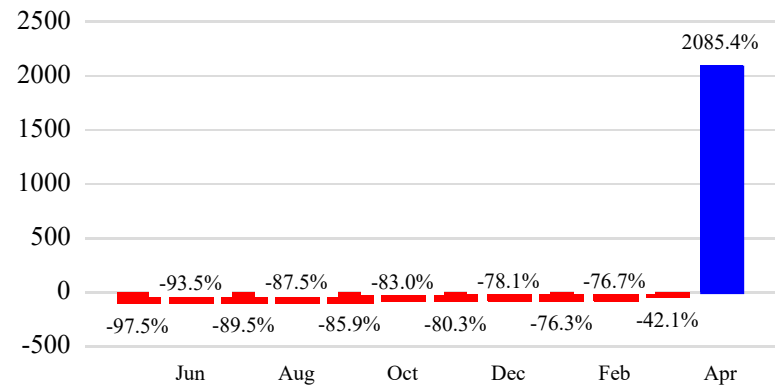
	<u>Curr Month</u>	<u>% Change</u>
	1,790,997	2085.4%
Domestic	1,121,056	2241.6%
International	669,941	1866.0%

Load Factors

	<u>Curr Month</u>
Domestic	71.4%
International	49.3%



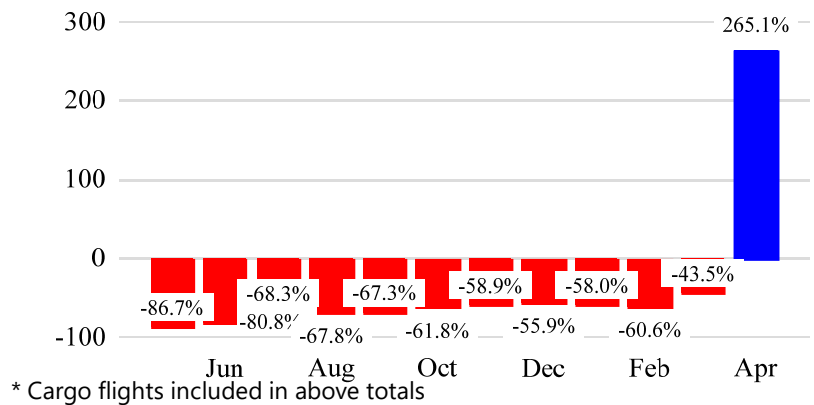
Year over Year % Change in Revenue Passengers - 12 Months



Total Flights

	<u>Curr Month</u>	<u>% Change</u>
	19,313	251.4% ▲
Excl GA	19,129	265.1% ▲
Domestic	11,824	237.5%
International	7,305	320.6%
Gen Aviation	184	-28.1%
Cargo Flights*	1,453	-7.7%

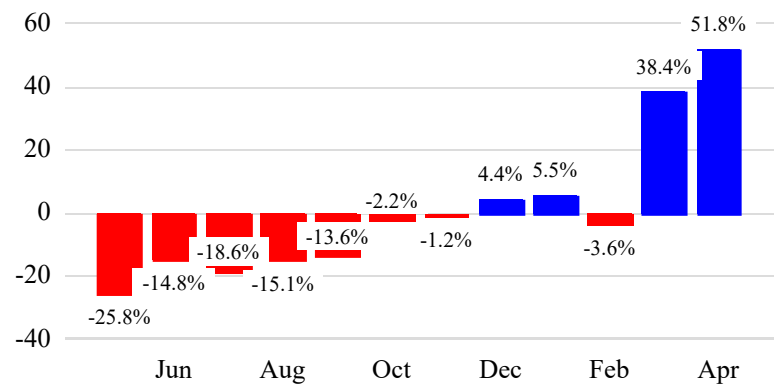
Year over Year % Change in Total Flights (Excl GA) - 12 Months



Cargo (Short Tons)

	<u>Curr Month</u>	<u>% Change</u>
	105,252	51.8% ▲
Domestic	34,599	38.0%
International	70,652	59.7%
Mail	11,614	357.6%

Year over Year % Change in Cargo - 12 Months



Top 5 Declines in Revenue Passengers by Airline

Airline	Pax Decline	% Decline
KOREAN	(1,935)	-40.3%
KUWAIT	(1,423)	-100.0%
SAUDI ARABIAN AIRLINES	(500)	-100.0%
ASIANA	(376)	-14.6%
LAN ECUADOR	(255)	-100.0%

Top 5 Increases in Revenue Passengers by Airline

Airline	Pax Increase	% Increase
JETBLUE AIRWAYS	646,310	2616.9%
DELTA	561,739	3027.3%
AMERICAN	237,807	3069.7%
TURKISH AIR	25,777	7407.2%
ALASKA AIRLINES	21,870	629.2%

12 Months Ending Passenger & Freight Statistics

Top 20 Airlines Ranking by Passengers & Freight: 12 Months Ending Apr 2021

Airline Name	Domestic	International	Total Pax	% of Tot	Airline Name	Short Tons	% of Tot
JETBLUE AIRWAYS	2,504,336	1,531,145	4,035,481	37.8%	FEDERAL EXPRESS	91,438	7.5%
DELTA	2,397,553	880,578	3,278,131	30.7%	AIR TRANSPORT INT'L.(BAX Inc.)	83,044	6.8%
AMERICAN	995,562	158,266	1,153,828	10.8%	ATLAS AIR	81,371	6.6%
TURKISH AIR	-	191,280	191,280	1.8%	CATHAY PACIFIC	59,512	4.9%
QATAR AIRWAYS	-	140,086	140,086	1.3%	UNITED PARCEL	57,921	4.7%
EMIRATES AIRLINES	-	132,693	132,693	1.2%	ABX AIR INC	52,180	4.3%
ALASKA AIRLINES	123,466	-	123,466	1.2%	KOREAN	51,998	4.2%
COPA AIRLINES	-	101,946	101,946	1.0%	CARGOLUX AIRLINES	51,672	4.2%
EGYPT AIR	-	95,973	95,973	0.9%	DELTA	49,300	4.0%
AIR FRANCE	-	93,090	93,090	0.9%	AIR CHINA INTERNATIONAL	41,534	3.4%
KLM	-	75,693	75,693	0.7%	KALITTA AIR LLC	40,871	3.3%
EASTERN	-	72,807	72,807	0.7%	CHINA AIRLINES (CAL)	38,390	3.1%
AEROFLOT	-	72,244	72,244	0.7%	VIRGIN ATLANTIC	35,005	2.9%
AVIANCA	-	72,039	72,039	0.7%	ACE BELGIUM FREIGHTERS	34,783	2.8%
AIR INDIA	-	71,800	71,800	0.7%	LUFTHANSA CARGO	34,025	2.8%
BRITISH AIRWAYS	-	64,046	64,046	0.6%	QATAR AIRWAYS	31,355	2.6%
AEROMEXICO	-	59,074	59,074	0.6%	AMERICAN	30,909	2.5%
TACA INTERNATIONAL	-	55,169	55,169	0.5%	TURKISH AIR	26,037	2.1%
LOT POLISH	-	52,155	52,155	0.5%	BRITISH AIRWAYS	23,098	1.9%
ROYAL AIR MAROC	-	48,944	48,944	0.5%	SAUDI ARABIAN AIRLINES	22,715	1.9%

Passengers & Freight by Market - 12 Months Ending

Market	Passengers	Freight (Short Tons)
TRANSATLANTIC	1,655,431	465,420
CANADA	3,560	1,125
CARIBBEAN + BERMUDA	1,776,288	4,426
CENTRAL AND SOUTH AMERICA	494,245	10,642
DOMESTIC	5,508,606	419,777
MEXICO	490,386	5,928
TRANSPACIFIC	195,482	315,714
PUERTO RICO	543,956	2,649

Additional Data

Airline Schedules (ADI): Non-Stop Destinations

	Region	Flights (Daily)	Cities
Domestic	Domestic	340.6	45
	Puerto Rico	18.0	2
	Total	358.6	47
International	Caribbean & Bermuda	80.9	17
	Central & South America	29.6	13
	Mexico	21.3	4
	Trans-Atlantic	62.9	26
	Trans-Pacific	10.3	9
	Total	205.0	69
	Total	563.6	116

Airline Schedules (ADI): Carriers & Aircraft Type

	Aircraft Type	Flights (Daily)	Carriers
Domestic	Commuter	102.3	3
	Narrow Body	230.8	4
	Wide Body	25.5	4
	Total	358.6	11
International	Narrow Body	123.9	10
	Wide Body	81.1	40
	Total	205.0	50
Total	Total	563.6	61

Passenger Demographics (ACI ASQ Surveys - 2019)

Connect

Local Origin/Destination	73.0%
Connecting	27.0%

Transport Mode

Bus/Shuttle	8.0%
Other	12.9%
Private/Company Car	30.8%
Rail/Subway	13.2%
Rental Car	3.8%
Taxi/Limo	31.4%

Gender

M	45.2%
F	54.8%

Trip Type

Business	14.1%
Leisure	85.9%

Annual Flights

1-2	41.7%
3-5	33.3%
6-10	15.9%
11-20	5.9%
21+	3.2%

Residency

United States	66.0%
Other	34.0%

Ground Transportation

	Curr Month	% Change
<i>Paid Parked Cars</i>	108,692	1,036.6
<i>GTC Bookings</i>	0	
<i>Airport Coach Passengers</i>	0	-100.0
<i>Taxis Dispatched</i>	61,498	3,465.1

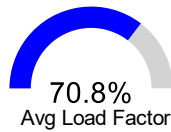
	Curr Month	% Change
<i>Total Air Train Passengers</i>	565,464	224.6
<i>Paid Howard Beach Passengers</i>	36,723	432.7
<i>Paid Jamaica Passengers</i>	122,529	554.4
<i>On-Airport (Unpaid) Passengers</i>	408,387	174.8

Revenue Passengers

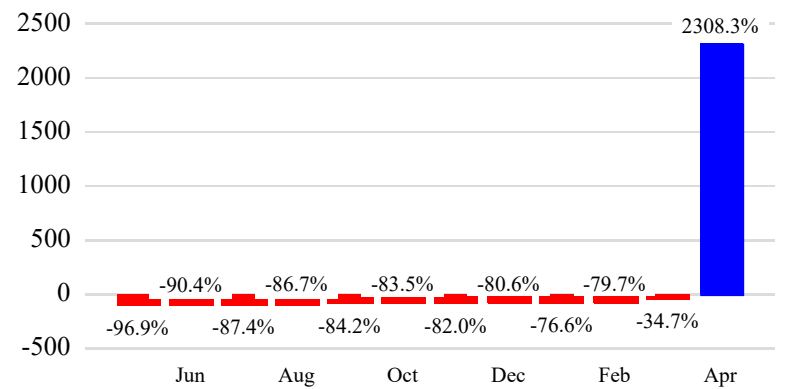
	<u>Curr Month</u>	<u>% Change</u>
	898,135	2308.3%
Domestic	898,135	2316.4%
International	0	-100.0%

Load Factors

	<u>Curr Month</u>
Domestic	70.9%
International	0.0%



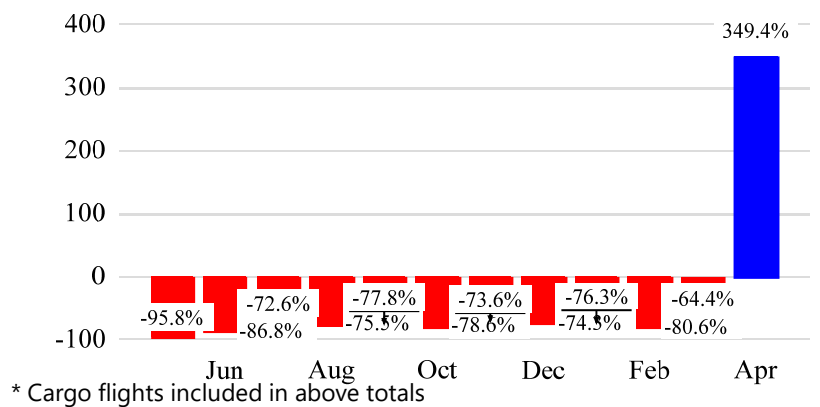
Year over Year % Change in Revenue Passengers - 12 Months



Total Flights

	<u>Curr Month</u>	<u>% Change</u>
	10,379	347.9%
Excl GA	10,153	349.4%
Domestic	10,153	354.7%
International	0	-100.0%
Gen Aviation	226	289.7%
Cargo Flights*	0	NaN

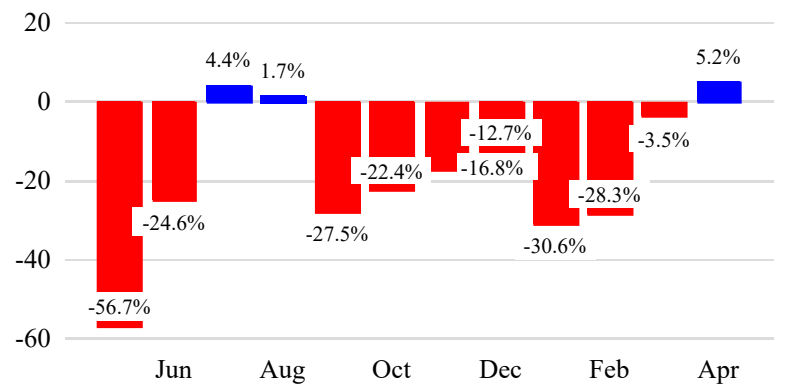
Year over Year % Change in Total Flights (Excl GA) - 12 Months



Cargo (Short Tons)

	<u>Curr Month</u>	<u>% Change</u>
	539	5.2% ▲
Domestic	539	5.2%
International	0	0.0%
Mail	233	37.9%

Year over Year % Change in Cargo - 12 Months



Top 5 Declines in Revenue Passengers by Airline

Airline	Pax Decline	% Decline
AIR CANADA	(125)	-100.0%

Top 5 Increases in Revenue Passengers by Airline

Airline	Pax Increase	% Increase
DELTA	314,417	2529.9%
AMERICAN	248,584	1711.0%
SOUTHWEST AIRLINES	115,673	1632.9%
SPIRIT AIRLINES	93,812	0.0%
JETBLUE AIRWAYS	33,676	3999.5%

12 Months Ending Passenger & Freight Statistics

Top 20 Airlines Ranking by Passengers & Freight: 12 Months Ending Apr 2021

Airline Name	Domestic	International	Total Pax	% of Tot	Airline Name	Short Tons	% of Tot
DELTA	1,881,420	3,217	1,884,637	34.8%	SOUTHWEST AIRLINES	3,562	64.9%
AMERICAN	1,455,989	281	1,456,270	26.9%	DELTA	1,083	19.7%
SOUTHWEST AIRLINES	661,810	-	661,810	12.2%	AMERICAN	819	14.9%
SPIRIT AIRLINES	590,129	-	590,129	10.9%	UNITED	25	0.5%
UNITED	481,835	-	481,835	8.9%			
JETBLUE AIRWAYS	154,342	-	154,342	2.8%			
FRONTIER AIRLINES	140,456	-	140,456	2.6%			
AIR CANADA	-	47,206	47,206	0.9%			
WESTJET	-	450	450	0.0%			

Passengers & Freight by Market - 12 Months Ending

Market	Passengers	Freight (Short Tons)
CANADA	50,873	0
CARIBBEAN + BERMUDA	281	0
CENTRAL AND SOUTH AMERICA	0	0
DOMESTIC	5,365,981	5,488

Additional Data

Airline Schedules (ADI): Non-Stop Destinations

	Region	Flights (Daily)	Cities
Domestic	Domestic	344.5	45
	Puerto Rico	0.1	1
	Total	344.6	46
International	Caribbean & Bermuda	0.3	1
	Total	0.3	1
Total		344.9	47

Airline Schedules (ADI): Carriers & Aircraft Type

	Aircraft Type	Flights (Daily)	Carriers
Domestic	Commuter	141.4	4
	Narrow Body	203.3	7
	Total	344.6	11
International	Narrow Body	0.3	1
Total	Total	0.3	1
Total	Total	344.9	12

Passenger Demographics (ACI ASQ Surveys - 2019)

Connect

Local Origin/Destination	86.0%
Connecting	14.0%

Transport Mode

Bus/Shuttle	10.1%
Other	14.3%
Private/Company Car	26.9%
Rail/Subway	1.9%
Rental Car	2.9%
Taxi/Limo	43.9%

Gender

M	43.1%
F	56.9%

Trip Type

Business	29.6%
Leisure	70.4%

Annual Flights

1-2	26.6%
3-5	32.8%
6-10	21.0%
11-20	11.3%
21+	8.4%

Residency

United States	87.6%
Other	12.4%

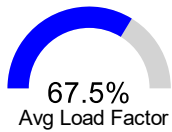
Ground Transportation

	<u>Curr Month</u>	<u>% Change</u>
<i>Paid Parked Cars</i>	23,053	79.6
<i>GTC Bookings</i>	0	
<i>Airport Coach Passengers</i>	0	-100.0
<i>Taxis Dispatched</i>	39,011	2,770.6

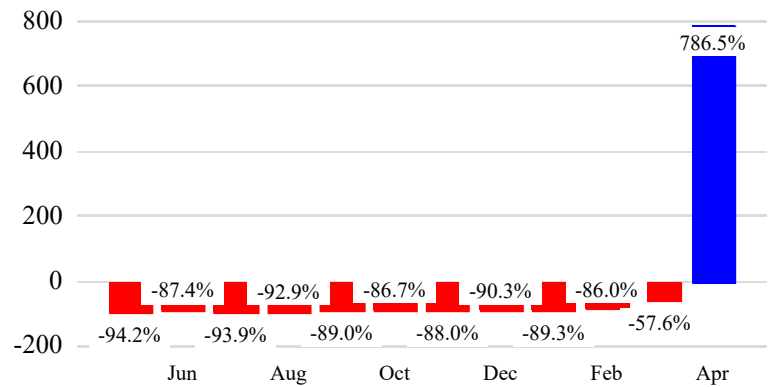
Revenue Passengers

	<u>Curr Month</u>	<u>% Change</u>
	7,145	786.5%
Domestic	7,145	786.5%
International	0	NaN

<u>Load Factors</u>	<u>Curr Month</u>	<u>Avg Load Factor</u>
Domestic	67.5%	67.5%
International	0.0%	67.5%



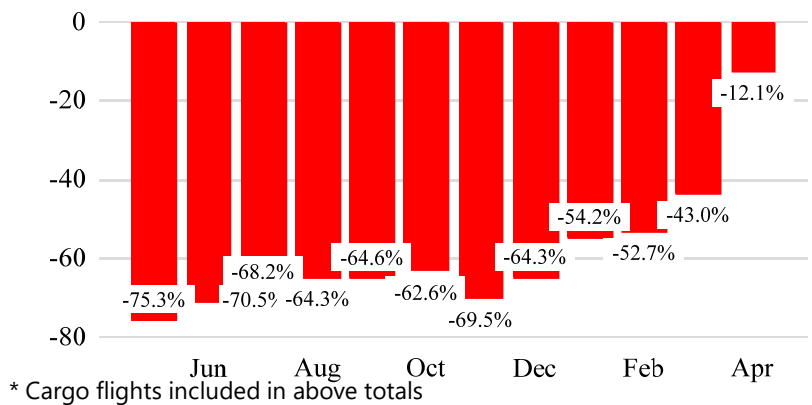
Year over Year % Change in Revenue Passengers - 12 Months



Total Flights

	<u>Curr Month</u>	<u>% Change</u>
	2,064	96.8% ▲
Excl GA	226	-12.1% ▼
Domestic	226	-12.1%
International	0	NaN
Gen Aviation	1,838	132.1%
Cargo Flights*	124	-6.8%

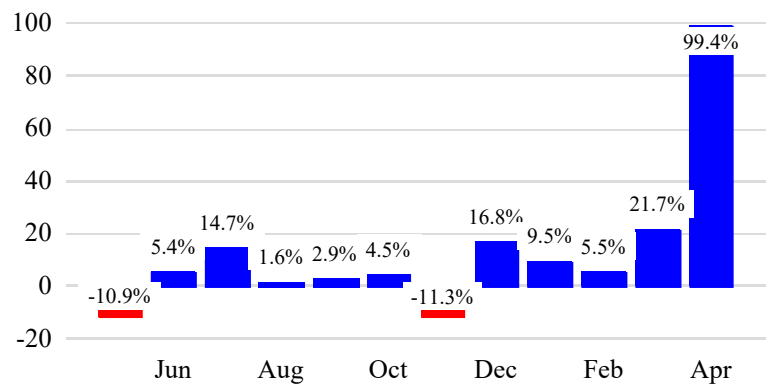
Year over Year % Change in Total Flights (Excl GA) - 12 Months



Cargo (Short Tons)

	<u>Curr Month</u>	<u>% Change</u>
	2,990	99.4% ▲
Domestic	2,990	99.4%
International	0	0.0%
Mail	1,591	-54.2%

Year over Year % Change in Cargo - 12 Months



Top 5 Declines in Revenue Passengers by Airline

Airline	Pax Decline	% Decline
JETBLUE AIRWAYS	(14)	-100.0%

Top 5 Increases in Revenue Passengers by Airline



Airline	Pax Increase	% Increase
ALLEGIAN AIR	5,702	1798.7%
AMERICAN	961	582.4%

12 Months Ending Passenger & Freight Statistics

Top 20 Airlines Ranking by Passengers & Freight: 12 Months Ending Apr 2021

Airline Name	Domestic	Total Pax	% of Tot	Airline Name	Short Tons	% of Tot
ALLEGiant AIR	45,852	45,852	88.0%	FEDERAL EXPRESS	15,466	58.8%
AMERICAN	6,078	6,078	11.7%	UNITED PARCEL	8,106	30.8%
DELTA	153	153	0.3%	KALITTA AIR LLC	2,238	8.5%
				ITINERANTS: USA	484	1.8%

Passengers & Freight by Market - 12 Months Ending

Market	Passengers	Freight (Short Tons)
TRANSATLANTIC	0	0
CANADA	0	0
CARIBBEAN + BERMUDA	0	0
CENTRAL AND SOUTH AMERICA	0	0
DOMESTIC	52,083 	26,294 

Additional Data

Airline Schedules (ADI): Non-Stop Destinations

	Region	Flights (Daily)	Cities
Domestic	Domestic	3.1	4
	Total	3.1	4
Total		3.1	4

Airline Schedules (ADI): Carriers & Aircraft Type

	Aircraft Type	Flights (Daily)	Carriers
Domestic	Commuter	1.5	1
	Narrow Body	1.6	1
	Total	3.1	2
Total	Total	3.1	2

Ground Transportation

	<u>Curr Month</u>	<u>% Change</u>
<i>Paid Parked Cars</i>	1,054	310.1
<i>GTC Bookings</i>	0	
<i>Airport Coach Passengers</i>	0	
<i>Taxis Dispatched</i>	0	