

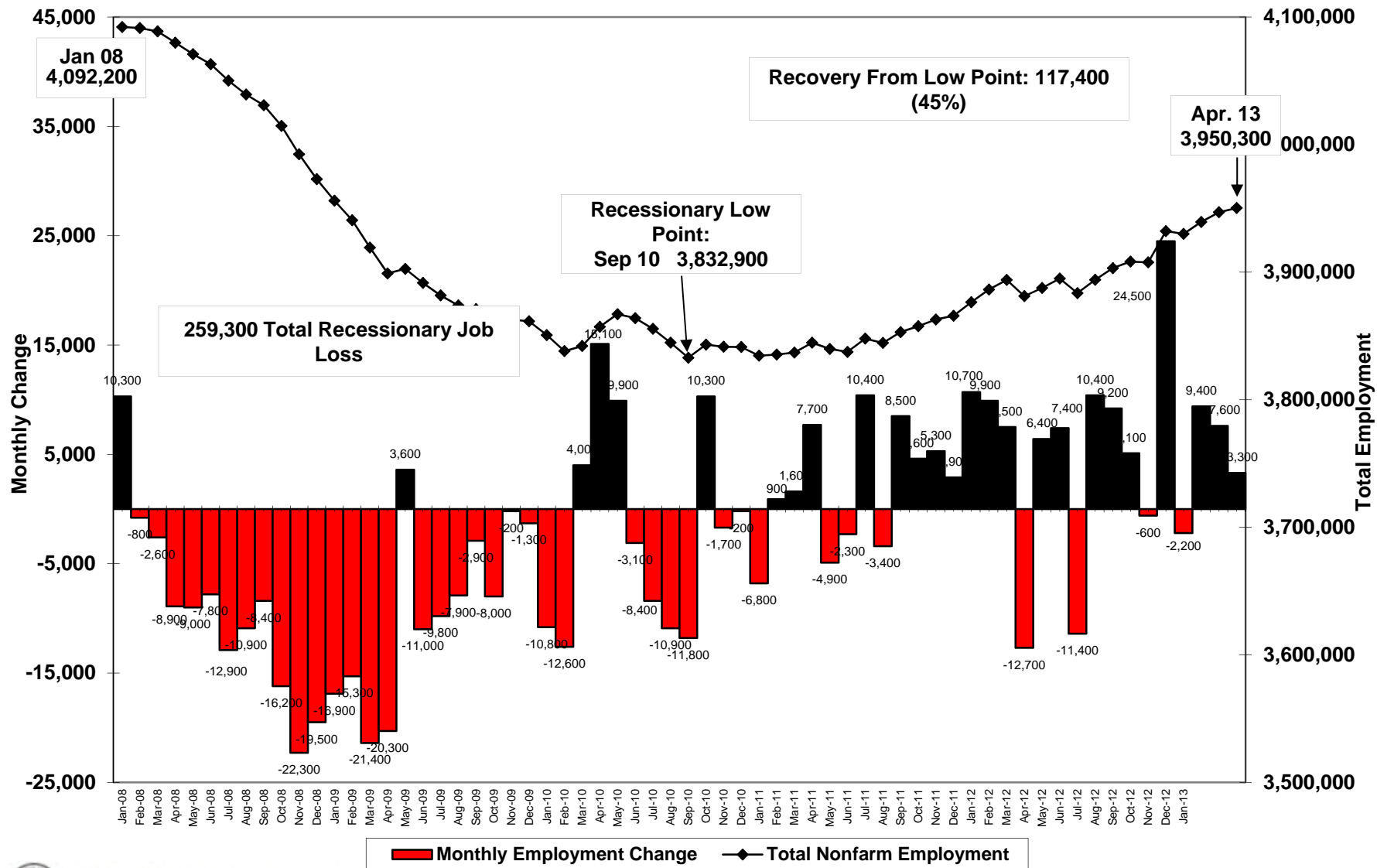
**New Jersey Department of Labor
and Workforce Development
Division of Labor Market &
Demographic Research**

**Labor Market Information Update
for April 2013**

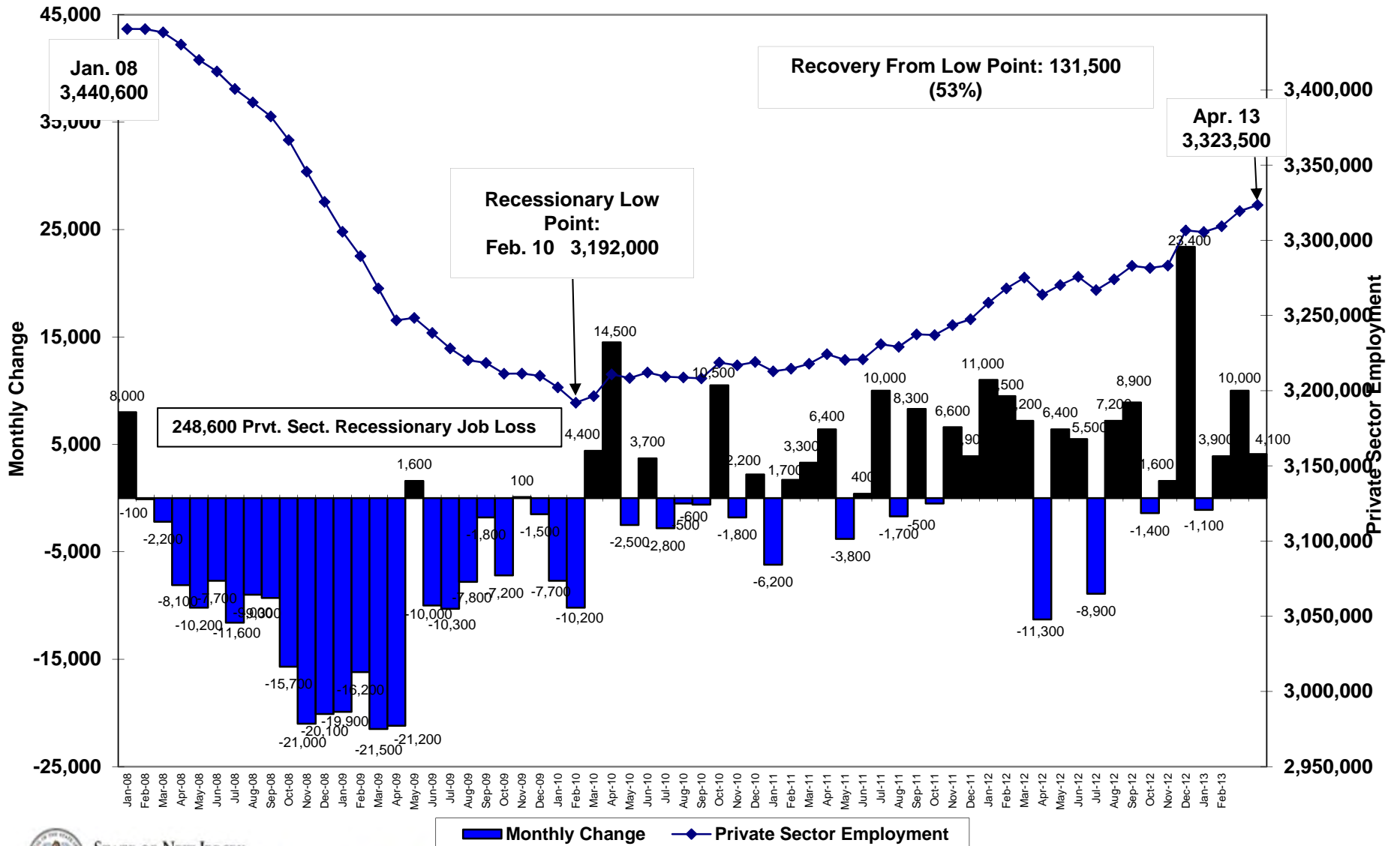
Prepared: May 2013



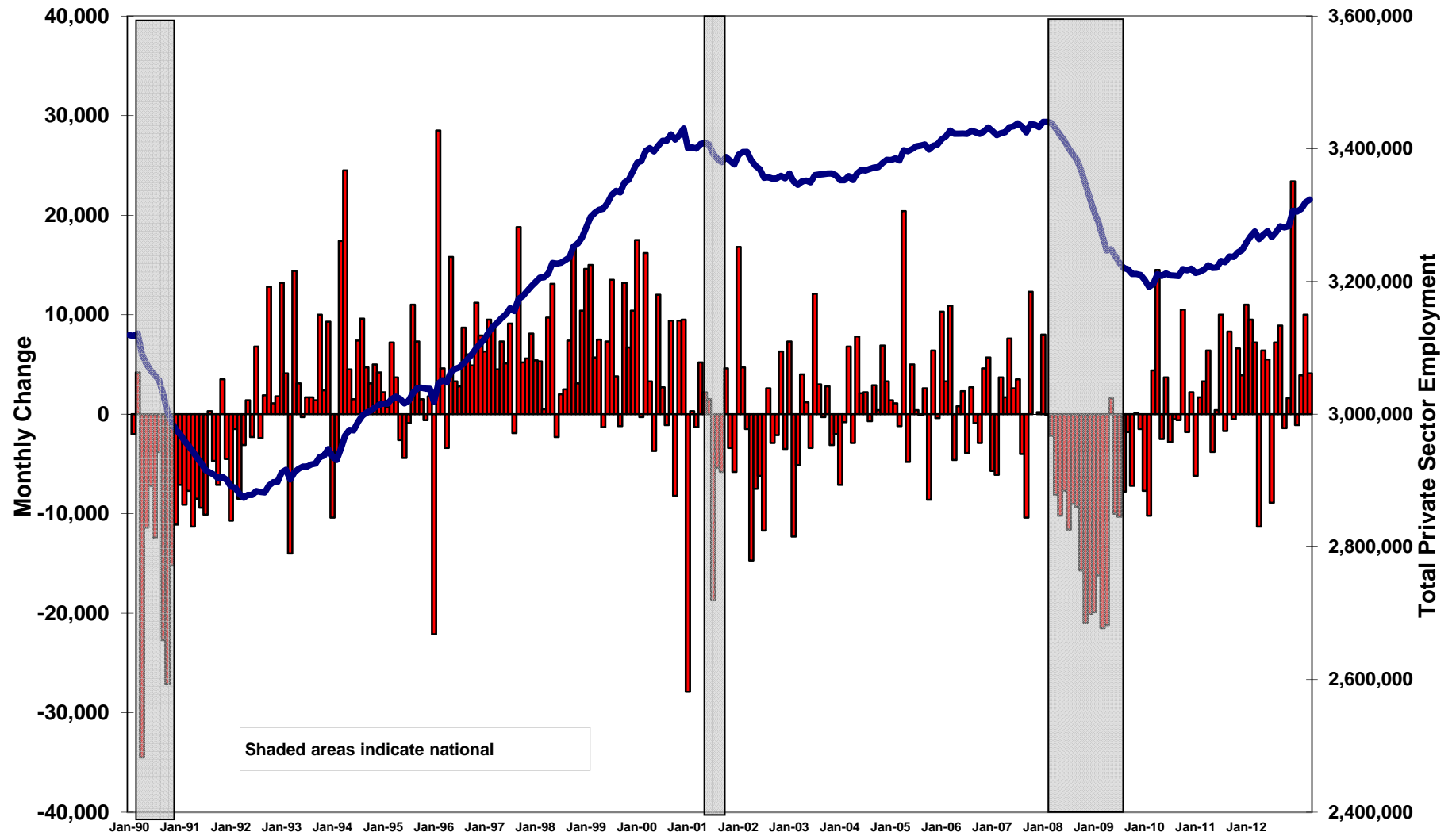
New Jersey Total Nonfarm Employment vs. Monthly Change January 2008 - April 2013



New Jersey Private Sector Employment vs. Monthly Change January 2008 - April 2013



New Jersey Private Sector Employment vs. Monthly Change January 1990 - April 2013

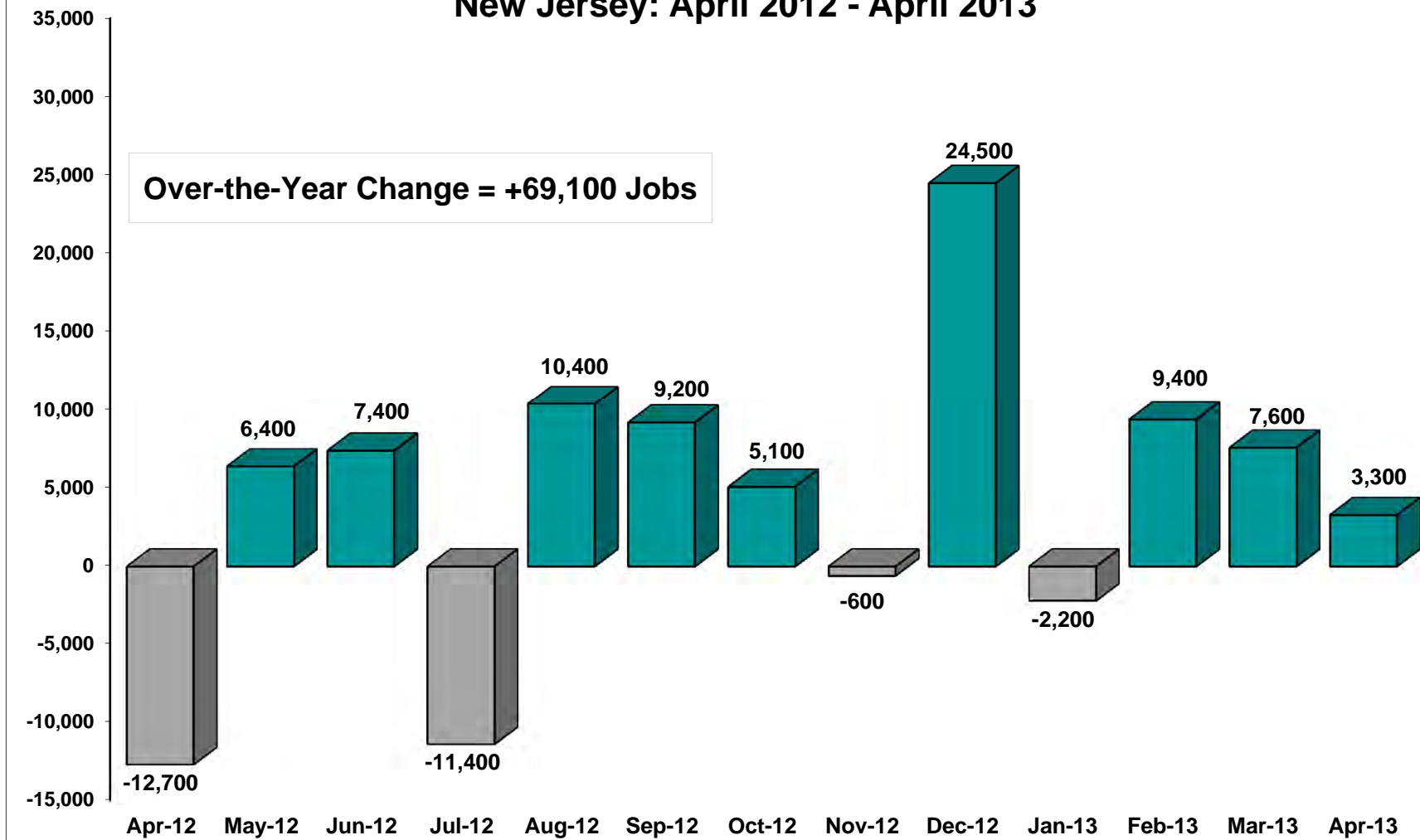


STATE OF NEW JERSEY

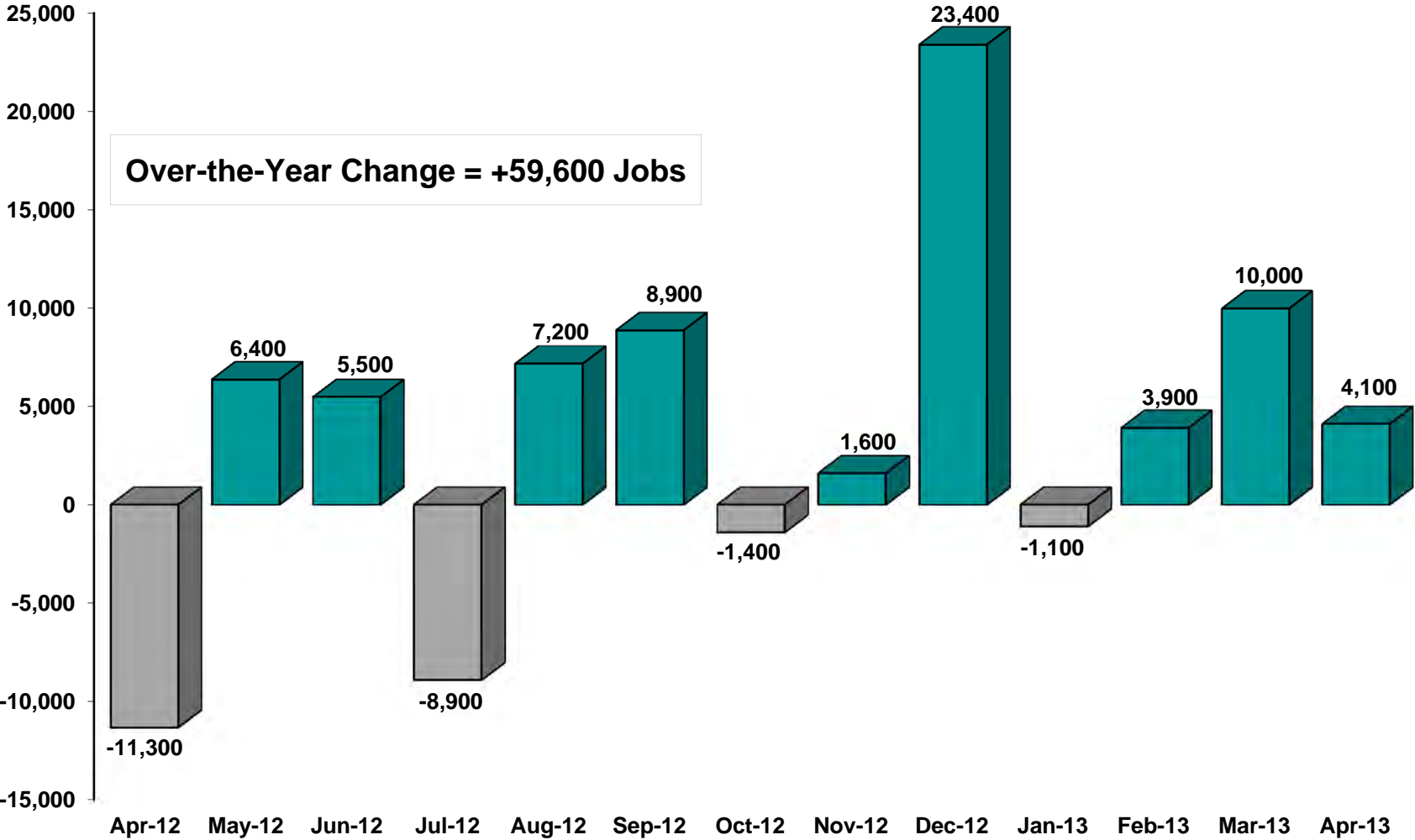
DEPARTMENT OF LABOR AND WORKFORCE DEVELOPMENT

█ Monthly Change
 — Private Sector Employment

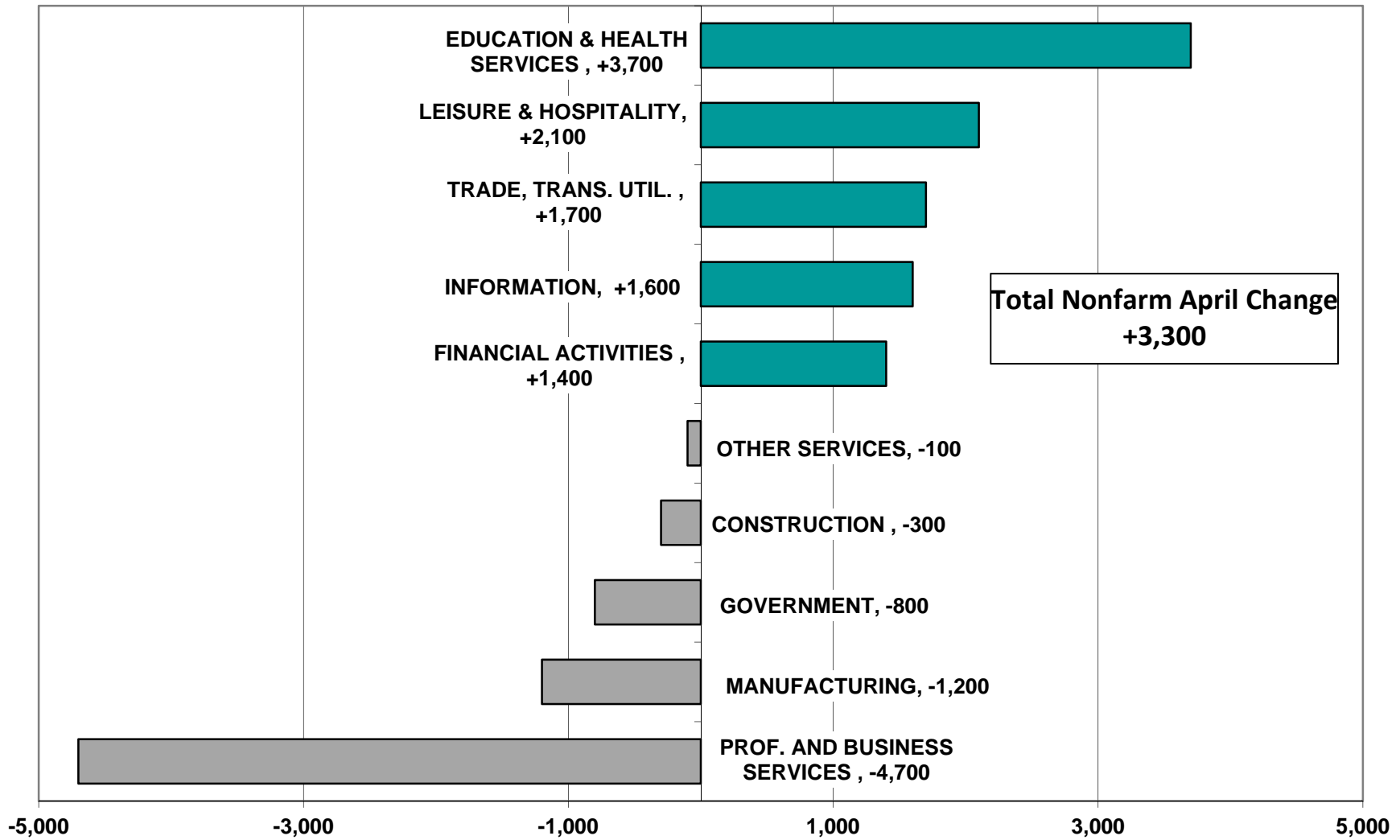
Monthly Total Employment Change New Jersey: April 2012 - April 2013



Monthly Private Sector Employment Change April 2012 - April 2013



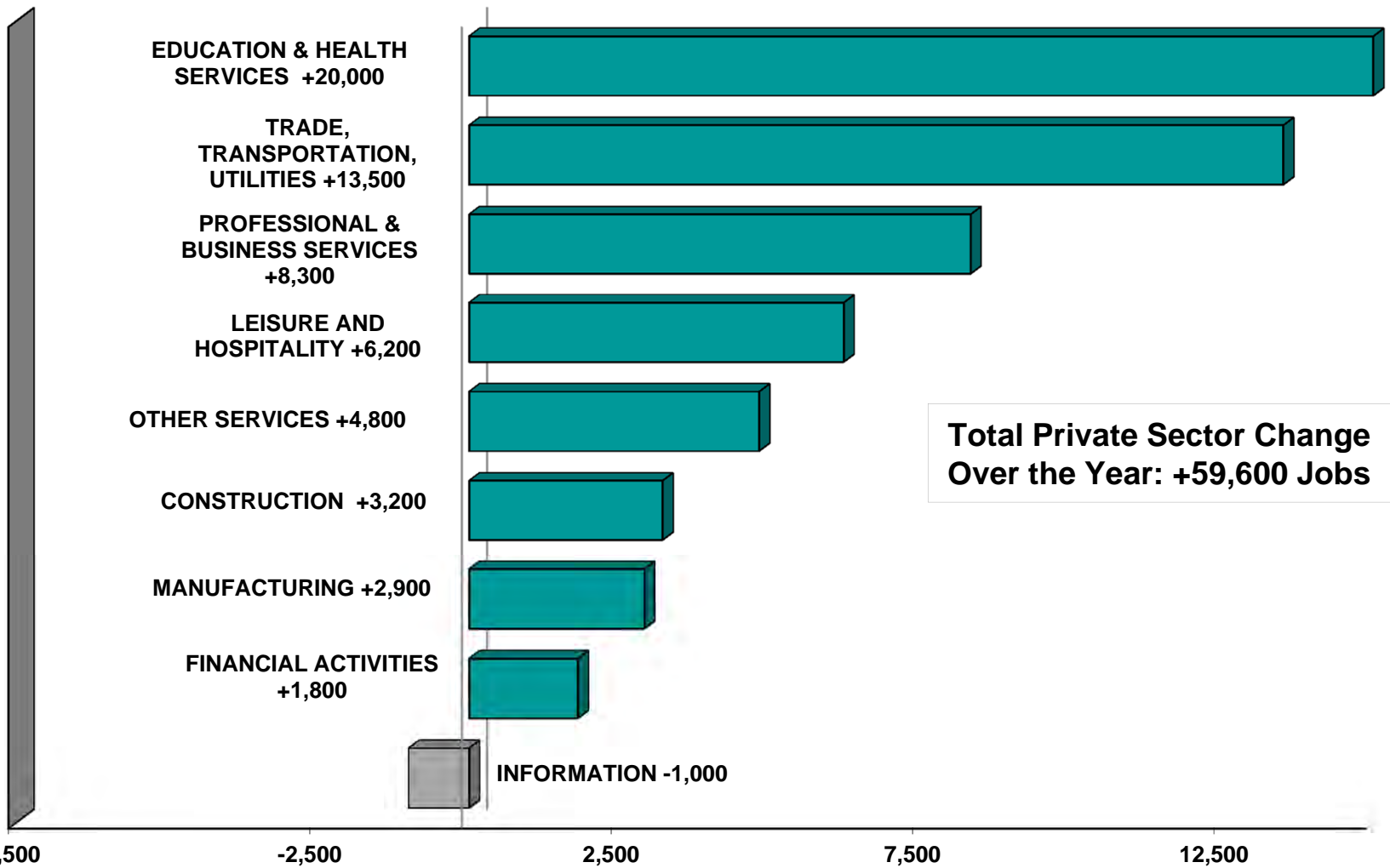
Monthly Employment Change: April 2013



STATE OF NEW JERSEY

DEPARTMENT OF LABOR AND WORKFORCE DEVELOPMENT

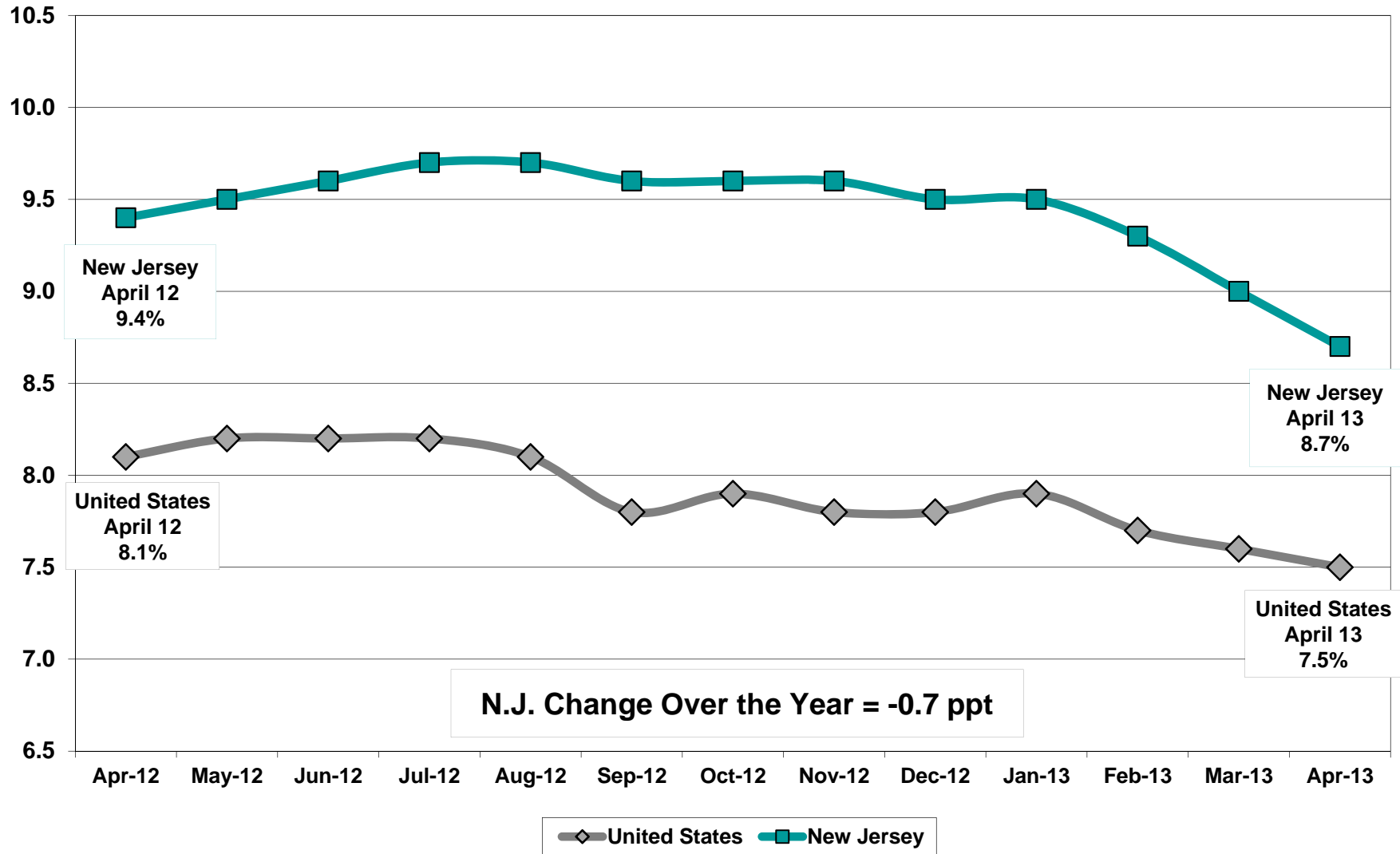
New Jersey Private Sector Employment Change by Industry April 2012 - April 2013



STATE OF NEW JERSEY

DEPARTMENT OF LABOR AND WORKFORCE DEVELOPMENT

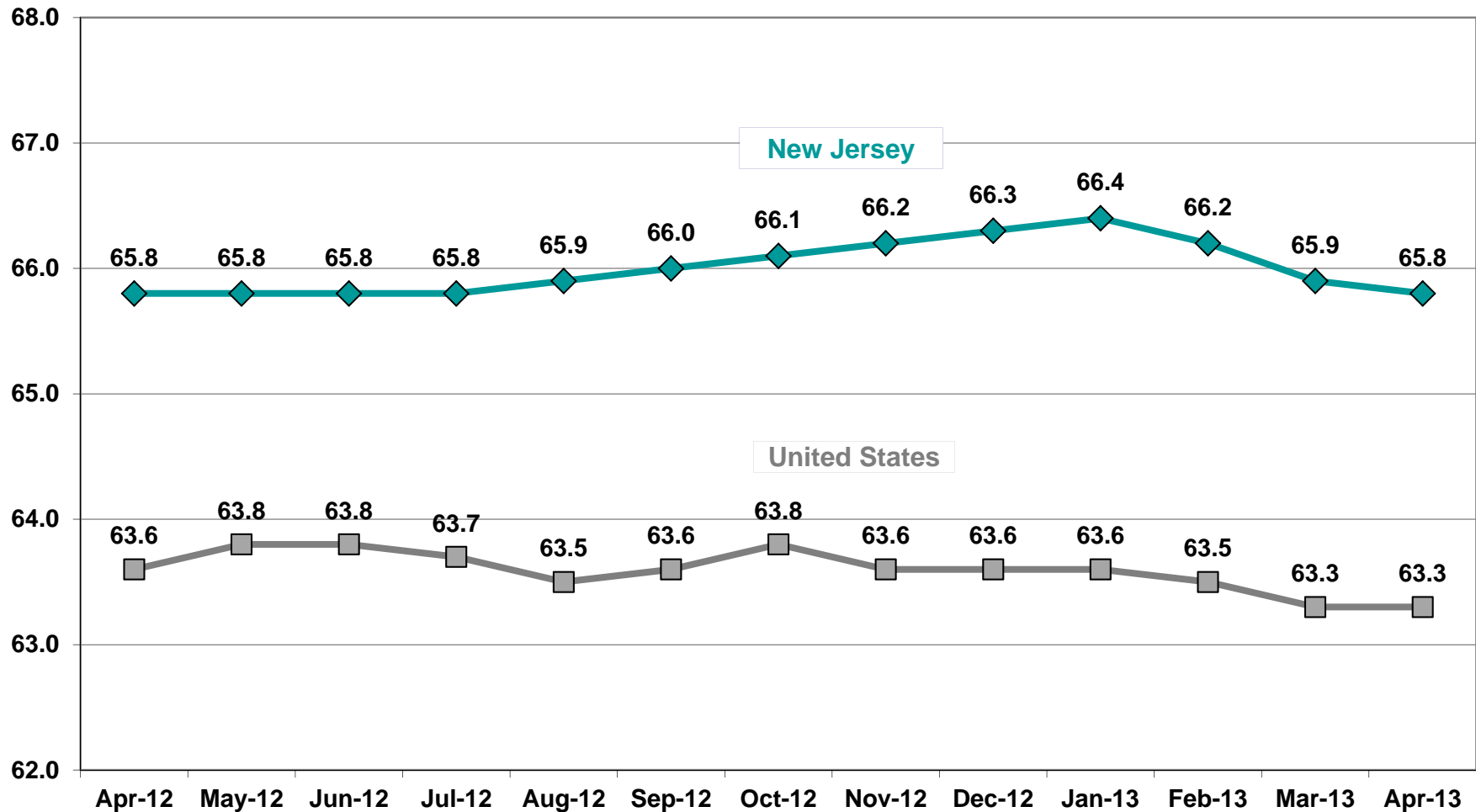
Unemployment Rates, New Jersey vs. United States: April 2012 - April 2013



STATE OF NEW JERSEY

DEPARTMENT OF LABOR AND WORKFORCE DEVELOPMENT

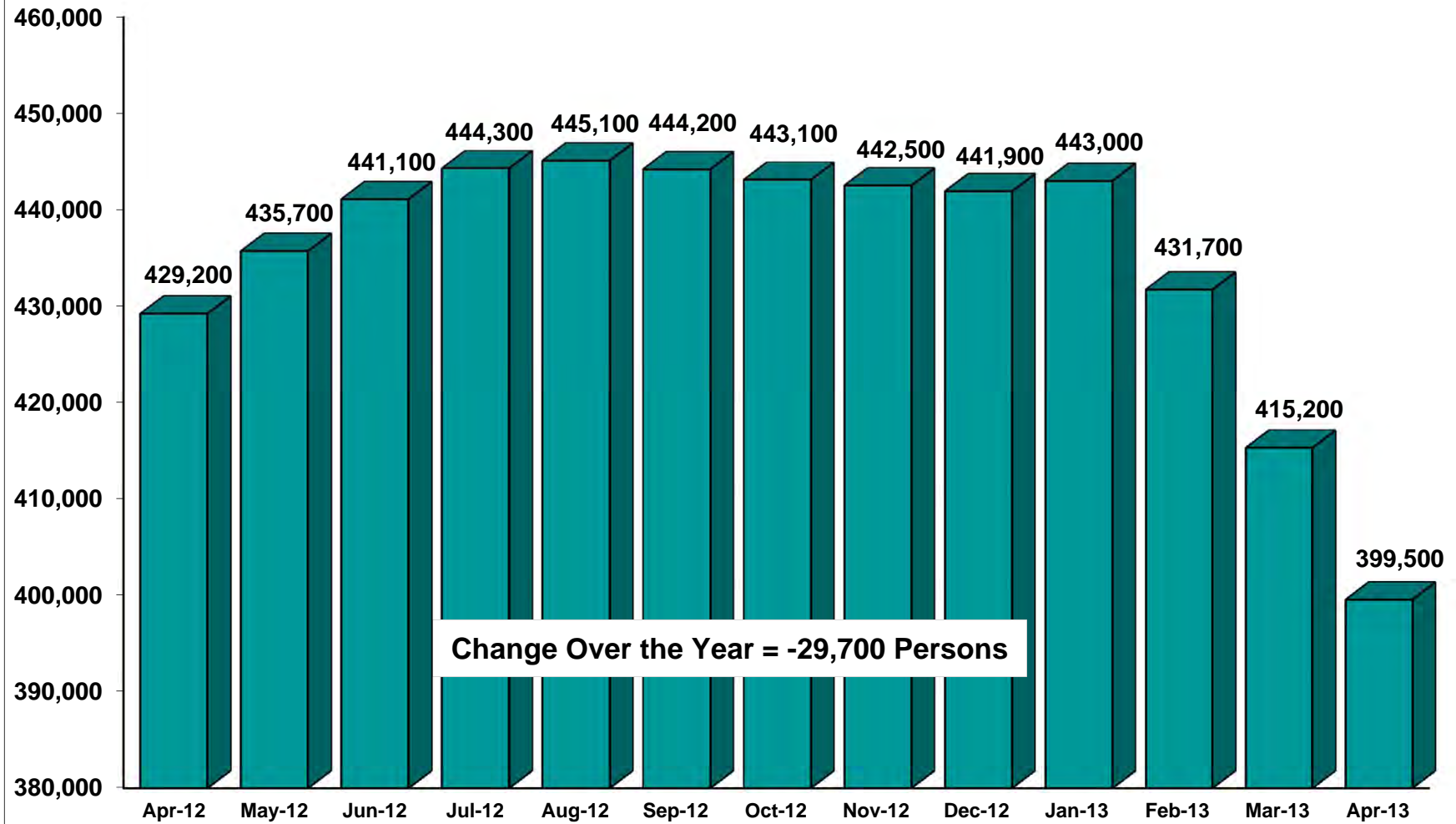
New Jersey vs. United States, Labor Force Participation Rate: April 2012 - April 2013



STATE OF NEW JERSEY

DEPARTMENT OF LABOR AND WORKFORCE DEVELOPMENT

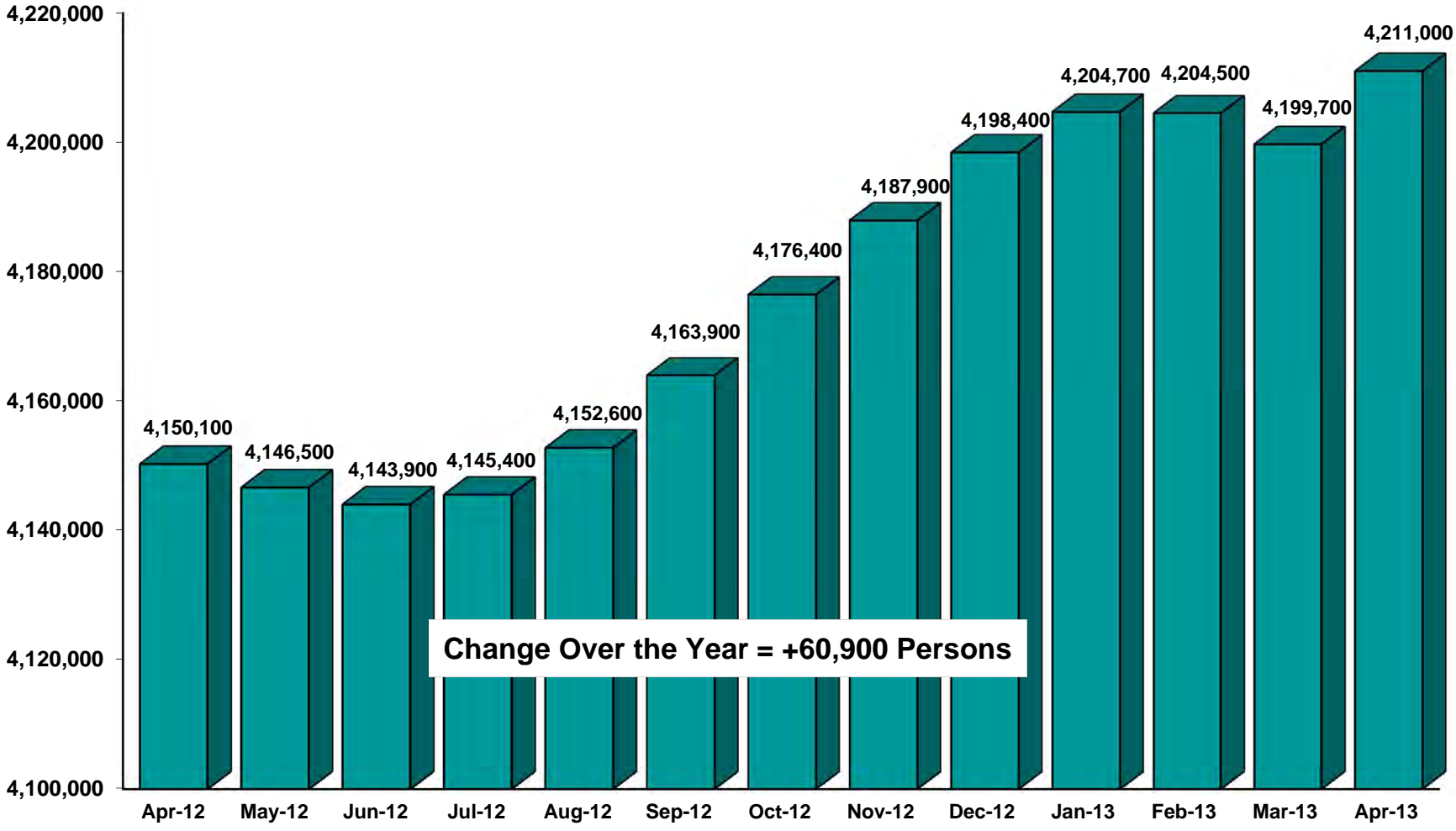
Unemployed New Jersey Residents April 2012 - April 2013



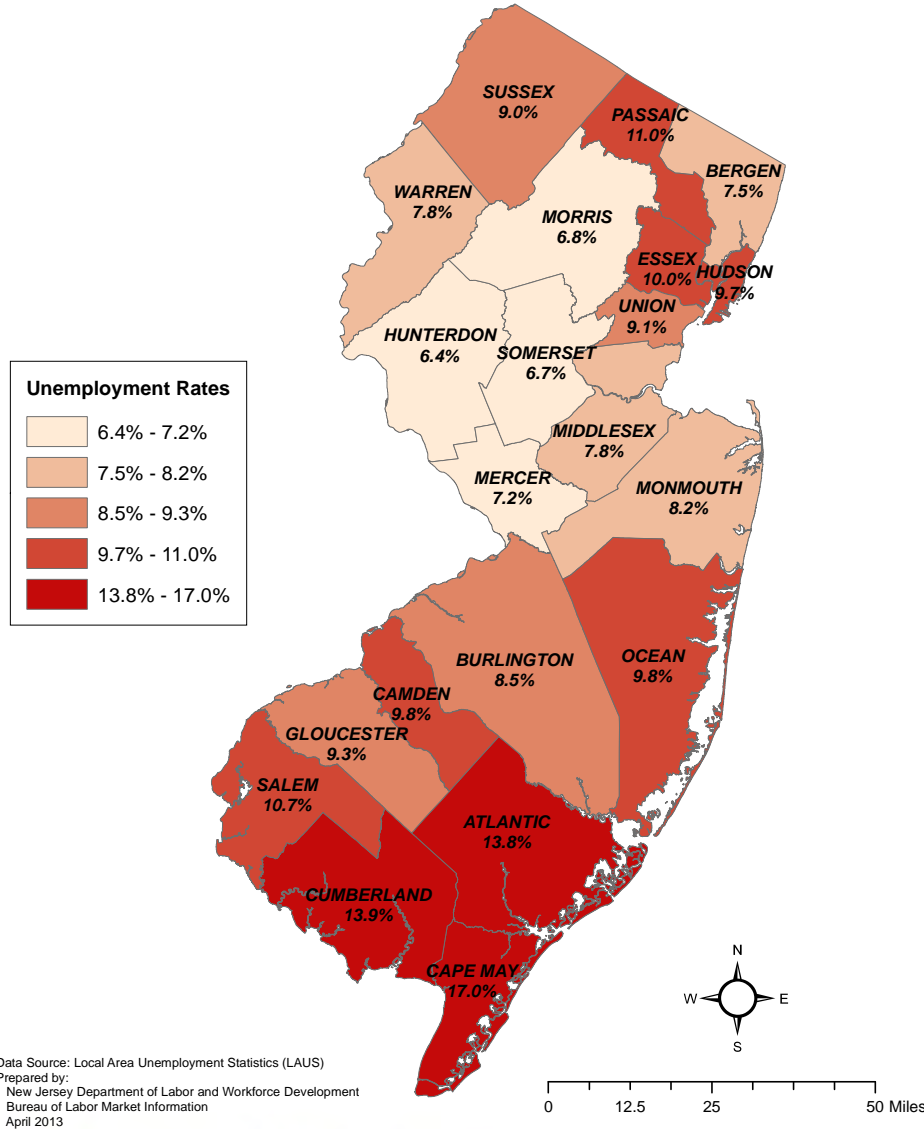
STATE OF NEW JERSEY

DEPARTMENT OF LABOR AND WORKFORCE DEVELOPMENT

Employed New Jersey Residents April 2012 - April 2013



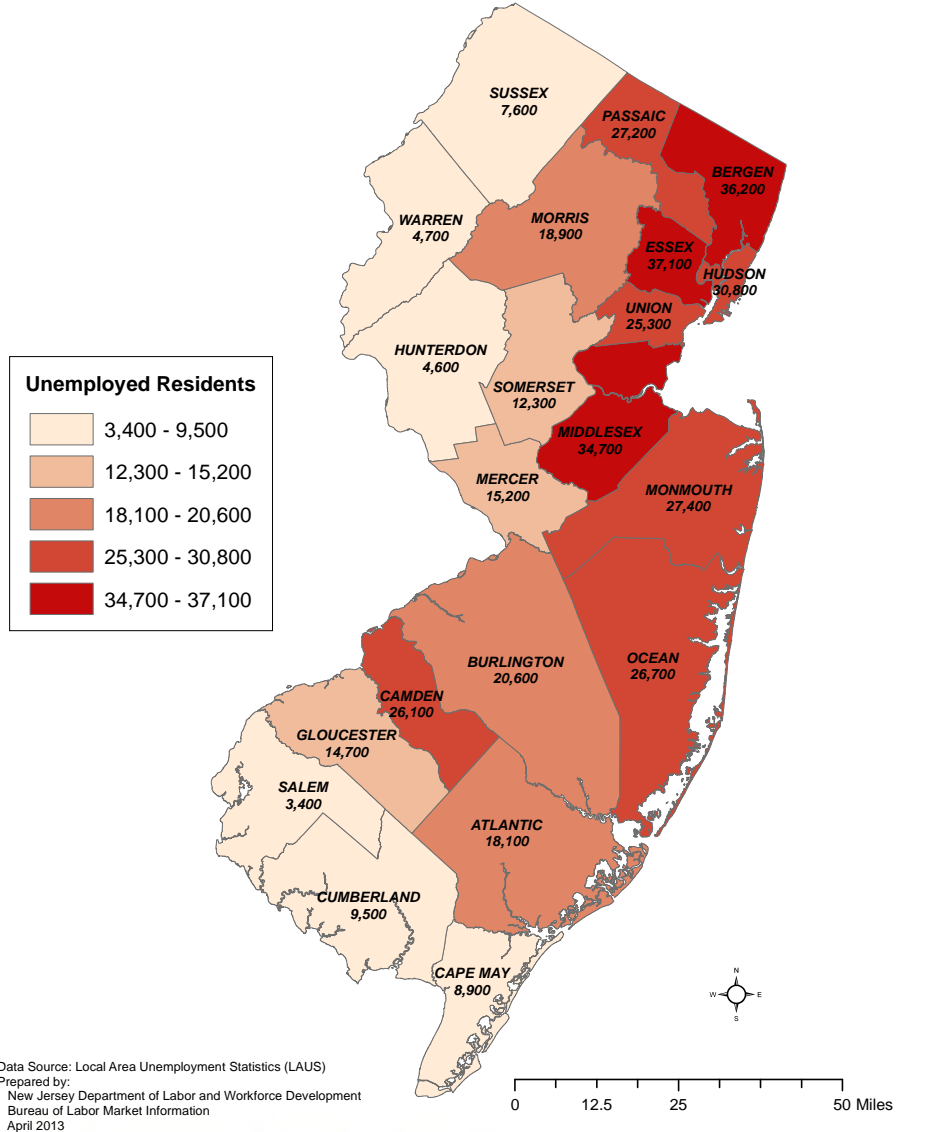
**New Jersey Counties
Unemployment Rates - March 2013**
(Preliminary, Not Seasonally Adjusted)



STATE OF NEW JERSEY

DEPARTMENT OF LABOR AND WORKFORCE DEVELOPMENT

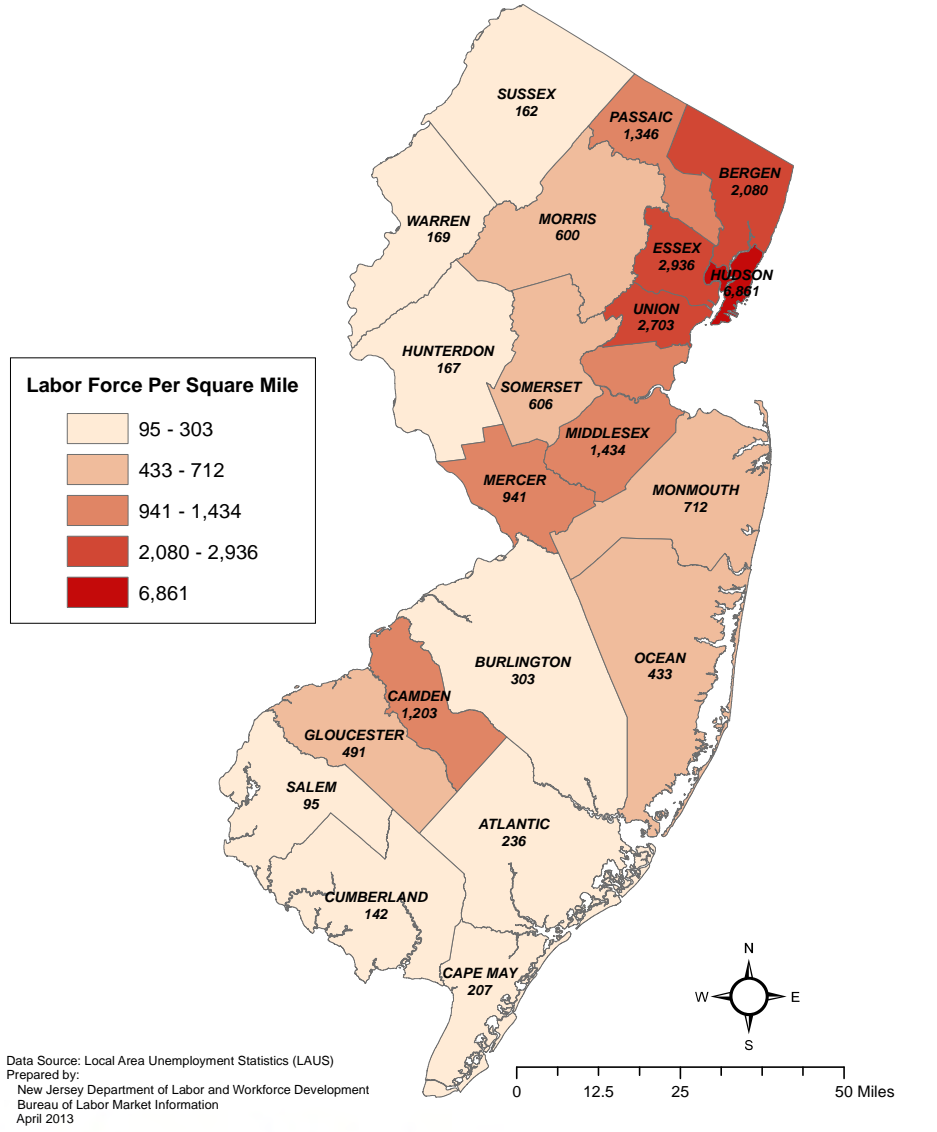
**New Jersey Counties
Unemployed Residents - March 2013
(Preliminary, Not Seasonally Adjusted)**



STATE OF NEW JERSEY

DEPARTMENT OF LABOR AND WORKFORCE DEVELOPMENT

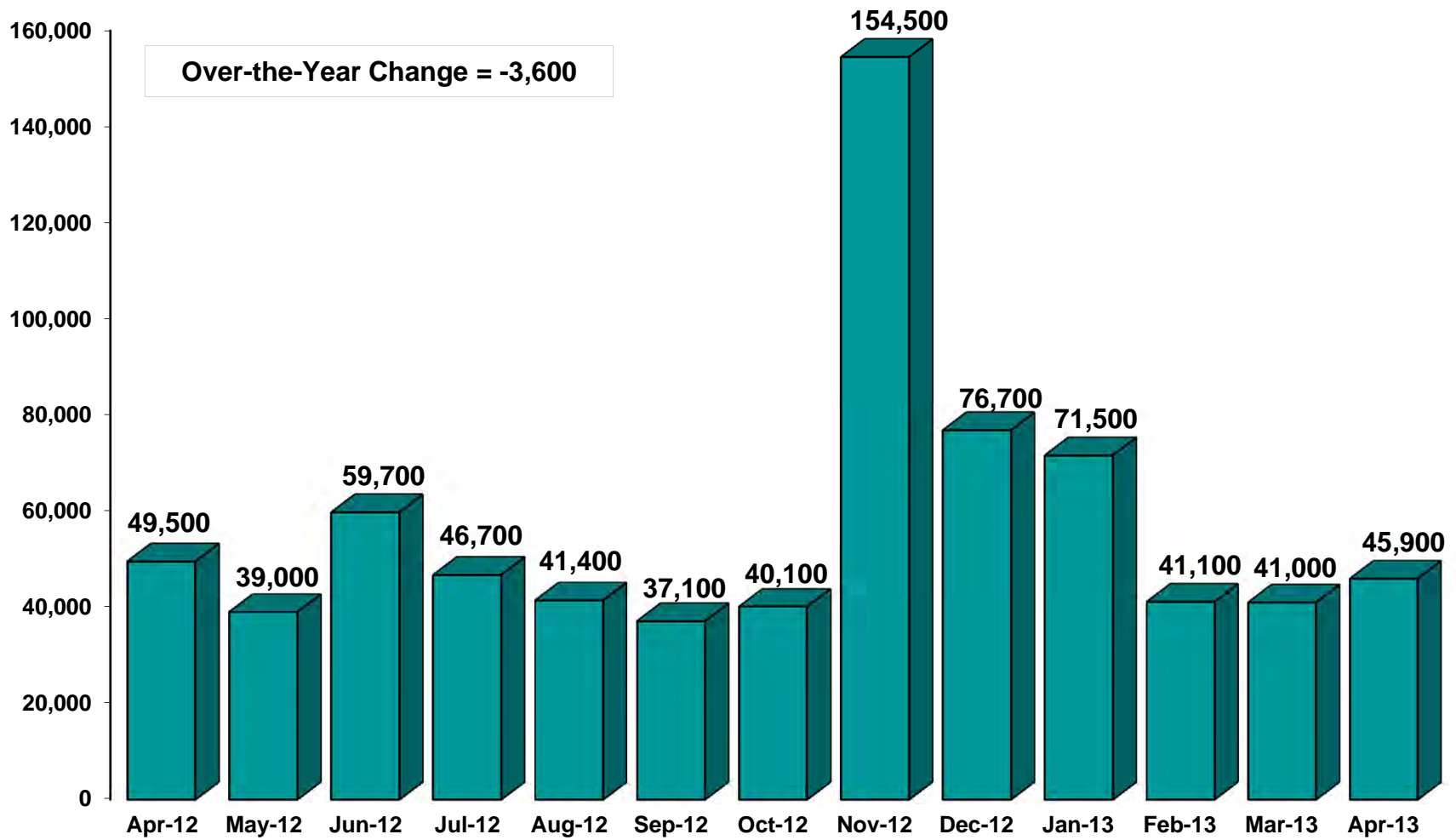
**New Jersey Counties
Labor Force Per Square Mile - March 2013
(Preliminary, Not Seasonally Adjusted)**



STATE OF NEW JERSEY

DEPARTMENT OF LABOR AND WORKFORCE DEVELOPMENT

New Jersey Monthly Initial Unemployment Claims April 2012 - April 2013



Real Time Jobs in Demand

Top 50 Occupational Listings – April 2013

SOC Code (ONET-6)	Occupation Title	Real Time Job Postings	Real Time Mean Salary	% Real Time Postings Requiring High School Diploma (Excluding NA)	Postings Requiring Some College/Associate's Degree (Excluding NA)	% Real Time Job Postings Requiring Bachelor's or Higher (Excluding NA)	% Real Time Job Postings with Unspecified Education	% 2011 National Employment Requiring High School Diploma or Less	% 2011 National Employment Requiring Some College or Associate's Degree	% 2011 National Employment Requiring a Bachelor's or Higher	2011 Mean Salary according to BLS	2011 Employment
15-1131	Computer Programmers	5,264	\$101,128	5%	0%	93%	61%	7%	25%	69%	\$82,270	14,710
15-1199	Computer Occupations, All Other	5,207	\$99,709	6%	3%	89%	47%	13%	42%	45%	NA	NA
41-2031	Retail Salespersons	3,286	\$63,022	77%	1%	20%	61%	38%	44%	19%	\$27,060	117,720
15-1121	Computer Systems Analysts	2,826	\$91,129	6%	2%	91%	42%	6%	24%	70%	\$88,770	20,980
41-1011	First-Line Supervisors/Managers of Retail Sales Workers	2,657	\$51,199	45%	4%	49%	42%	37%	39%	24%	\$47,510	31,140
15-1132	Software Developers, Applications	2,644	\$91,904	6%	3%	90%	41%	3%	15%	82%	\$97,610	27,540
13-2011	Accountants and Auditors	2,495	\$73,774	10%	1%	88%	36%	4%	19%	77%	\$81,250	34,380
29-1141	Registered Nurses	2,479	\$77,380	6%	14%	78%	45%	1%	44%	55%	\$76,460	78,180
41-4012	Sales Representatives, Wholesale and Manufacturing, Except Technical and Scientific Products	2,398	\$68,701	30%	4%	64%	41%	22%	33%	45%	\$75,310	42,160
11-1021	General and Operations Managers	2,286	\$101,685	8%	1%	89%	32%	19%	34%	47%	\$162,450	40,810
11-2021	Marketing Managers	2,062	\$91,296	1%	0%	98%	28%	10%	25%	65%	\$146,970	8,000
43-4051	Customer Service Representatives	1,900	\$35,053	68%	7%	24%	48%	35%	46%	19%	\$36,290	57,940
11-3031	Financial Managers	1,584	\$108,231	15%	0%	83%	26%	13%	30%	58%	\$141,830	21,610
11-2022	Sales Managers	1,568	\$92,954	23%	1%	74%	41%	10%	25%	65%	\$140,570	13,450
43-6011	Executive Secretaries and Administrative Assistants	1,397	\$71,138	17%	5%	77%	35%	33%	49%	19%	\$57,340	19,140
13-2051	Financial Analysts	1,383	\$73,563	6%	0%	92%	28%	3%	10%	86%	\$84,980	8,170
13-1111	Management Analysts	1,380	\$92,177	5%	0%	93%	37%	6%	18%	76%	\$92,930	13,710
23-1011	Lawyers	1,292	\$83,946	1%	0%	97%	51%	NA	NA	NA	\$129,650	20,100
43-6014	Secretaries, Except Legal, Medical, and Executive	1,221	\$39,614	62%	9%	27%	45%	33%	49%	19%	\$39,090	57,160
15-1141	Database Administrators	1,212	\$101,218	8%	1%	89%	56%	7%	27%	66%	\$86,920	3,940
11-3051	Industrial Production Managers	1,204	\$96,238	7%	3%	89%	29%	26%	31%	43%	\$118,660	4,970
53-3032	Truck Drivers, Heavy and Tractor-Trailer	1,149	\$61,193	91%	0%	8%	73%	67%	28%	5%	\$44,030	38,760
43-3071	Tellers	1,148	NA	98%	0%	0%	53%	34%	50%	16%	\$26,910	17,880
11-9199	Managers, All Other	1,118	\$103,089	11%	1%	87%	34%	19%	29%	52%	\$120,100	19,030
15-1134	Web Developers	1,067	\$91,510	2%	2%	94%	61%	8%	32%	61%	NA	NA



Real Time Jobs in Demand

Top 50 Occupational Listings – April 2013

SOC Code (ONET-6)	Occupation Title	Real Time Job Postings	Real Time Mean Salary	% Real Time Postings Requiring High School Diploma (Excluding NA)	Postings Requiring Some College/Associate's Degree (Excluding NA)	% Real Time Job Postings Requiring Bachelor's or Higher (Excluding NA)	% Real Time Job Postings with Unspecified Education	% 2011 National Employment Requiring High School Diploma or Less	% 2011 National Employment Requiring Some College or Associate's Degree	% 2011 National Employment Requiring a Bachelor's or Higher	2011 Mean Salary according to BLS	2011 Employment
41-1011	First-Line Supervisors/Managers of Retail Sales Workers	2,579	\$50,441	43%	5%	51%	44%	37%	39%	24%	\$47,510	31,140
15-1121	Computer Systems Analysts	2,482	\$91,342	5%	2%	91%	38%	6%	24%	70%	\$88,770	20,980
13-2011	Accountants and Auditors	2,462	\$73,673	12%	0%	86%	36%	4%	19%	77%	\$81,250	34,380
11-1021	General and Operations Managers	2,406	\$97,155	9%	1%	88%	33%	19%	34%	47%	\$162,450	40,810
15-1132	Software Developers, Applications	2,347	\$91,799	7%	3%	88%	39%	3%	15%	82%	\$97,610	27,540
29-1141	Registered Nurses	2,237	\$75,909	5%	12%	81%	45%	1%	44%	55%	\$76,460	78,180
41-4012	Sales Representatives, Wholesale and Manufacturing, Except Technical and Scientific Products	2,236	\$69,671	30%	4%	65%	39%	22%	33%	45%	\$75,310	42,160
11-2021	Marketing Managers	2,082	\$93,821	2%	0%	97%	28%	10%	25%	65%	\$146,970	8,000
43-4051	Customer Service Representatives	1,688	\$34,466	69%	8%	22%	44%	35%	46%	19%	\$36,290	57,940
11-3031	Financial Managers	1,636	\$106,649	16%	0%	83%	28%	13%	30%	58%	\$141,830	21,610
11-2022	Sales Managers	1,545	\$87,015	23%	1%	74%	42%	10%	25%	65%	\$140,570	13,450
13-2051	Financial Analysts	1,459	\$69,136	7%	0%	91%	26%	3%	10%	86%	\$84,980	8,170
43-6011	Executive Secretaries and Administrative Assistants	1,335	\$70,398	19%	4%	76%	36%	33%	49%	19%	\$57,340	19,140
13-1111	Management Analysts	1,254	\$83,025	7%	0%	91%	38%	6%	18%	76%	\$92,930	13,710
43-3071	Tellers	1,251	NA	98%	0%	1%	53%	34%	50%	16%	\$26,910	17,880
11-3051	Industrial Production Managers	1,235	\$99,518	8%	2%	88%	31%	26%	31%	43%	\$118,660	4,970
23-1011	Lawyers	1,235	\$86,739	1%	0%	98%	48%	NA	NA	NA	\$129,650	20,100
43-6014	Secretaries, Except Legal, Medical, and Executive	1,132	\$36,432	60%	10%	28%	46%	33%	49%	19%	\$39,090	57,160
15-1141	Database Administrators	1,068	\$103,382	8%	1%	90%	57%	7%	27%	66%	\$86,920	3,940
17-2141	Mechanical Engineers	1,039	\$83,899	14%	3%	82%	31%	4%	24%	71%	\$88,260	5,780
11-9199	Managers, All Other	1,022	\$96,020	13%	1%	85%	31%	19%	29%	52%	\$120,100	19,030
53-3032	Truck Drivers, Heavy and Tractor-Trailer	986	\$61,364	90%	0%	9%	74%	67%	28%	5%	\$44,030	38,760
15-1134	Web Developers	972	\$90,886	2%	0%	96%	59%	8%	32%	61%	NA	NA
11-9111	Medical and Health Services Managers	959	\$73,176	9%	2%	88%	37%	12%	30%	58%	\$110,100	7,840
13-1071	Employment, Recruitment, and Placement Specialists	951	\$63,838	14%	4%	81%	35%	14%	32%	54%	\$65,610	14,300



NJ Department of Labor & Workforce Development Offers
Empowering
Labor Market Information

- Population and Demographic Trends
 - [Census Data](#)
 - [Population and Household Estimates](#)
- Economic Data
 - [Labor Force Estimates](#)
 - [Unemployment Rates](#)
 - [Employment Data](#)
 - [Industry and Occupational Employment Projections](#)
 - [Population and Labor Force Projections](#)
 - [Occupational Wage Rates](#)
 - [Building Permits](#)



STATE OF NEW JERSEY

DEPARTMENT OF LABOR AND WORKFORCE DEVELOPMENT

NJLWD Resources

<http://jobs4jersey.com/>

**J4J OnRamp –
Matching Skills of Job Seekers to
Skills Sought by NJ Region
Employers**

Labor Market Information Links

<http://lwd.dol.state.nj.us/labor/>



STATE OF NEW JERSEY

DEPARTMENT OF LABOR AND WORKFORCE DEVELOPMENT