

December 2023 Traffic Report

REGION



AVIATION DEPARTMENT (Data As Of 1/30/2024 4:44:22 PM)

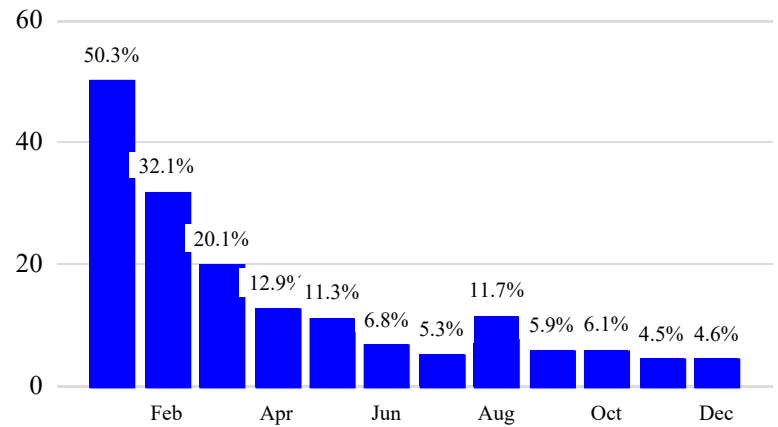
Revenue Passengers

	Curr Month	% Change
	11,901,344	4.6% ▲
Domestic	7,832,397	1.1%
International	4,068,947	11.9%
Non-Revenue	291,171	0.9%

Load Factors	Curr Month
Domestic	85.1%
International	80.0%

83.3%
Avg Load Factor

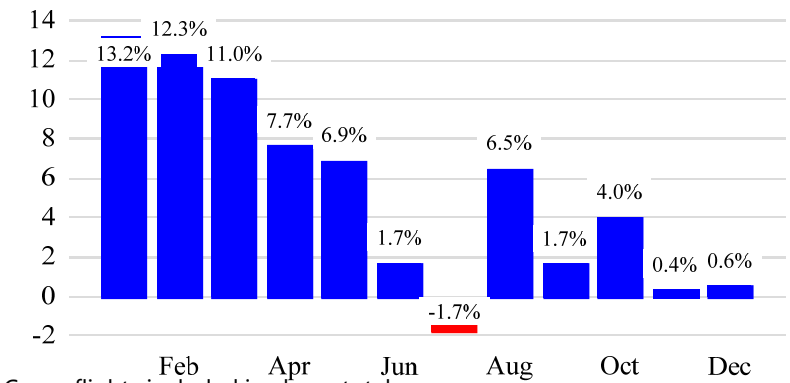
Year over Year % Change in Revenue Passengers - 12 Months



Total Flights

	Curr Month	% Change
	103,865	0.4% ▲
Excl GA	99,272	0.6% ▲
Domestic	72,332	-3.7%
International	26,940	14.0%
Gen Aviation	4,593	-2.3%
Cargo Flights*	3,777	-3.3%

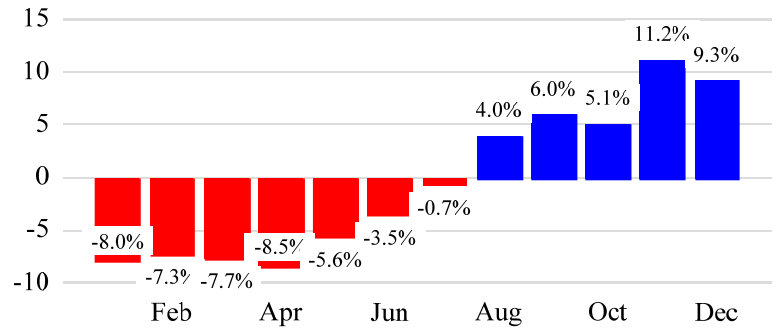
Year over Year % Change in Total Flights (Excl GA) - 12 Months



Cargo (Short Tons)

	Curr Month	% Change
	222,063	9.2% ▲
Domestic	98,715	7.3%
International	123,349	10.9%
Mail	7,832	-39.4%

Year over Year % Change in Cargo - 12 Months



Top 5 Declines in Revenue Passengers by Airline

Airline	Pax Decline	% Decline
JETBLUE AIRWAYS	(192,442)	-10.0%
AMERICAN	(88,066)	-6.0%
UNITED	(56,768)	-2.0%
SINGAPORE AIRLINES	(9,890)	-24.0%
WESTJET	(9,315)	-54.0%

Top 5 Increases in Revenue Passengers by Airline

Airline	Pax Increase	% Increase
DELTA	384,877	16.0%
SPIRIT AIRLINES	100,229	26.0%
SOUTHWEST AIRLINES	46,646	20.0%
AVIANCA	42,624	70.0%
AIR CANADA	33,598	30.0%

Airport Summary Statistics

JFK Summary

	Current Month	YoY %
Total Revenue Pax	5,194,823	6.0
Total Flights Including GA	40,188	5.0
Total Cargo (Short Tons)	152,928	15.4

EWR Summary

	Current Month	YoY %
Total Revenue Pax	4,010,086	1.0
Total Flights Including GA	34,447	0.0
Total Cargo (Short Tons)	64,490	-4.6

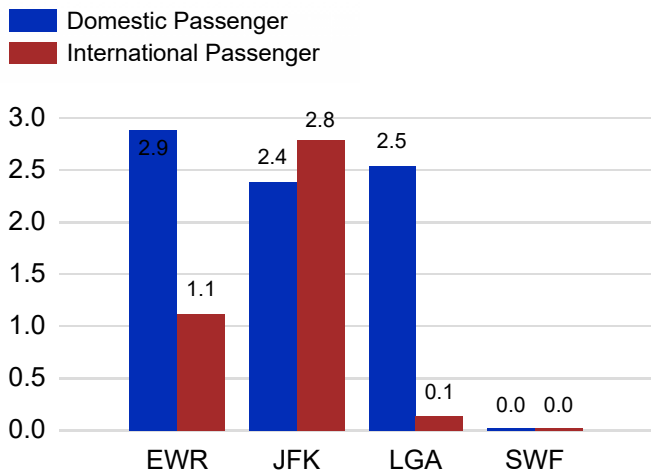
LGA Summary

	Current Month	YoY %
Total Revenue Pax	2,681,233	6.0
Total Flights Including GA	27,570	-3.0
Total Cargo (Short Tons)	431	-21.4

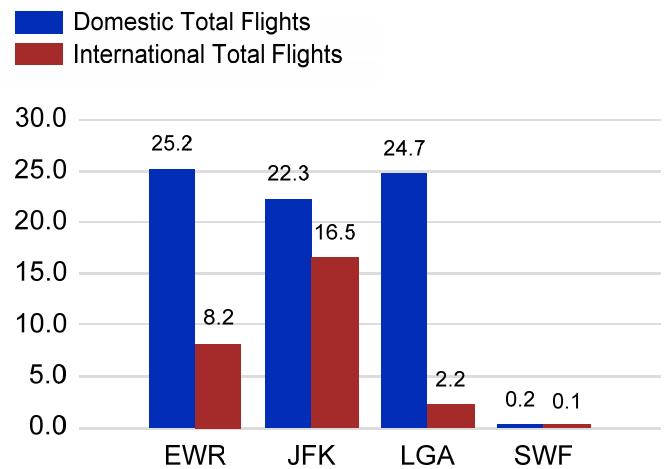
SWF Summary

	Current Month	YoY %
Total Revenue Pax	15,202	-33.0
Total Flights Including GA	1,660	-21.0
Total Cargo (Short Tons)	4,215	63.9

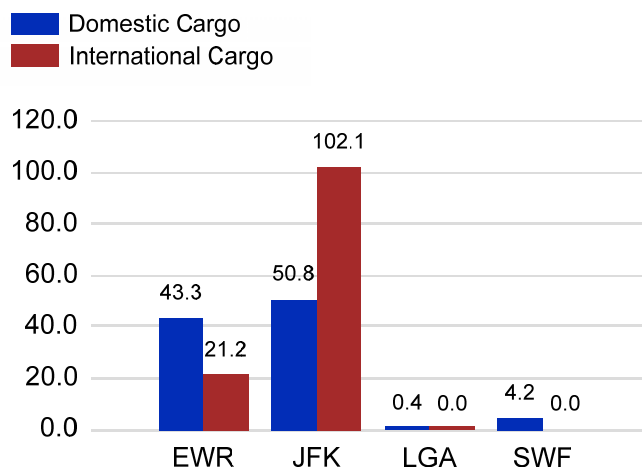
Total Passengers by Airport (Millions)



Total Flights by Airport (Thousands)



Total Cargo by Airport (Thousands of Short Tons)



12 Months Ending Passenger & Freight Statistics

Top 20 Airlines Ranking by Passengers & Freight: 12 Months Ending Dec 2023

Airline Name	Domestic	International	Total Pax	% of Tot	Airline Name	Short Tons	% of Tot
UNITED	27,344,520	8,232,188	35,576,708	24.71%	FEDERAL EXPRESS	369,982	15.99%
DELTA	27,335,789	6,130,246	33,466,035	23.24%	UNITED PARCEL	189,400	8.18%
JETBLUE AIRWAYS	15,239,534	6,663,476	21,903,010	15.21%	UNITED	182,884	7.90%
AMERICAN	13,743,495	3,593,267	17,336,762	12.04%	DELTA	109,837	4.75%
SPIRIT AIRLINES	4,743,679	0	4,743,679	3.29%	KALITTA AIR LLC	108,983	4.71%
SOUTHWEST AIRLINES	3,177,827	0	3,177,827	2.21%	AMERICAN	81,505	3.52%
ALASKA AIRLINES	2,431,704	0	2,431,704	1.69%	AIR TRANSPORT INT'L.(BAX Inc.)	79,238	3.42%
AIR CANADA	0	1,792,685	1,792,685	1.24%	ATLAS AIR	78,635	3.40%
BRITISH AIRWAYS	0	1,682,546	1,682,546	1.17%	LUFTHANSA	54,787	2.37%
AIR FRANCE	0	1,205,310	1,205,310	0.84%	BRITISH AIRWAYS	53,790	2.32%
EMIRATES AIRLINES	0	1,086,343	1,086,343	0.75%	KOREAN	49,449	2.14%
VIRGIN ATLANTIC	0	1,031,387	1,031,387	0.72%	CARGOLUX AIRLINES	47,248	2.04%
AVIANCA	0	960,579	960,579	0.67%	CATHAY PACIFIC	46,865	2.03%
LUFTHANSA	0	867,773	867,773	0.60%	CHINA AIRLINES	44,170	1.91%
AER LINGUS	0	758,821	758,821	0.53%	ABX AIR INC	39,111	1.69%
TURKISH AIRLINES	0	748,871	748,871	0.52%	VIRGIN ATLANTIC	36,927	1.60%
EL AL	254	620,038	620,292	0.43%	AIR CHINA	32,945	1.42%
SAS	0	572,082	572,082	0.40%	CHINA CARGO AIRLINES	32,428	1.40%
IBERIA	0	565,121	565,121	0.39%	ASIANA	31,046	1.34%
LATAM AIRLINES	0	557,295	557,295	0.39%	LATAM AIRLINES	30,204	1.31%

Passengers & Freight by Market - 12 Months Ending

Market	Passengers	Freight (Short Tons)
TRANSATLANTIC	26,383,425	852,441
CANADA	4,271,558	8,792
CARIBBEAN + BERMUDA	8,533,711	11,235
CENTRAL AND SOUTH AMERICA	4,454,466	59,585
DOMESTIC	92,623,969	973,322
MEXICO	2,434,590	12,897
TRANSPACIFIC	2,803,411	388,075
PUERTO RICO	2,498,658	7,912

Additional Data

Airline Schedules (ADI): Non-Stop Destinations

	Region	Flights (Daily)	Cities
Domestic	Domestic	2205.6	108
	Puerto Rico	37.1	3
	Total	2,242.7	111.00
International	Canada	169.3	8
	Caribbean & Bermuda	180.7	24
	Central & South America	90.1	20
	Mexico	51.2	6
	Transatlantic	313.2	53
	Transpacific	36.3	10
	Total	840.8	121.00
Total	3,083.5	232.00	

Airline Schedules (ADI): Carriers & Aircraft Type

	Aircraft Type	Flights (Daily)	Carriers
Domestic	Commuter	762.8	4
	Narrow Body	1430.6	10
	Wide Body	49.3	4
	Total	2,242.7	18.00
International	Commuter	161.6	5
	Narrow Body	342.0	21
	Wide Body	337.2	58
	Total	840.8	84.00
Total	Total	3,083.5	102.00

Passenger Demographics (ACI ASQ Surveys - 2021)

Connect		Trip Type		Gender	
Local Origin/Destination	78.6%	Business	14.0%	M	49.6%
Connecting	21.4%	Leisure	86.0%	F	50.4%
Transport Mode		Annual Flights		Residency	
Bus/Shuttle	4.7%	1-2	61.5%	United States	81.0%
Other	18.7%	3-5	24.9%	Other	19.0%
Private/Company Car	37.5%	6-10	9.0%		
Rail/Subway	7.3%	11-20	2.8%		
Rental Car	4.6%	21+	1.8%		
Taxi/Limo	27.2%				

Ground Transportation

	Curr Month	% Change		Curr Month	% Change
<i>Paid Parked Cars</i>	315,170	-11.3	<i>Total Air Train Passengers</i>	2,910,174	13.6
<i>GTC Bookings</i>	0		<i>Paid Howard Beach Passengers</i>	124,341	-20.0
<i>Airport Coach Passengers</i>	42,596	19.6	<i>Paid Jamaica Passengers</i>	590,895	25.2
<i>Taxis Dispatched</i>	300,952	-20.2	<i>Paid EWR Passengers</i>	245,828	-4.0
			<i>On-Airport (Unpaid) Passengers</i>	1,949,110	16.2

Airlines for American Carriers (USA)

	Curr Month	% Change
<i>Freight:revenue ton miles (000)</i>	0	

Regional Airports: Other

	Curr Month	% Change
<i>TEB flight movements</i>	15,222	3.0
<i>ISP Total passengers</i>	132,319	45.0
<i>HPN Total passengers</i>	186,501	9.5