

February 2022 Traffic Report

AVIATION DEPARTMENT (Data As Of 3/31/2022 11:28:10 AM)

REGION

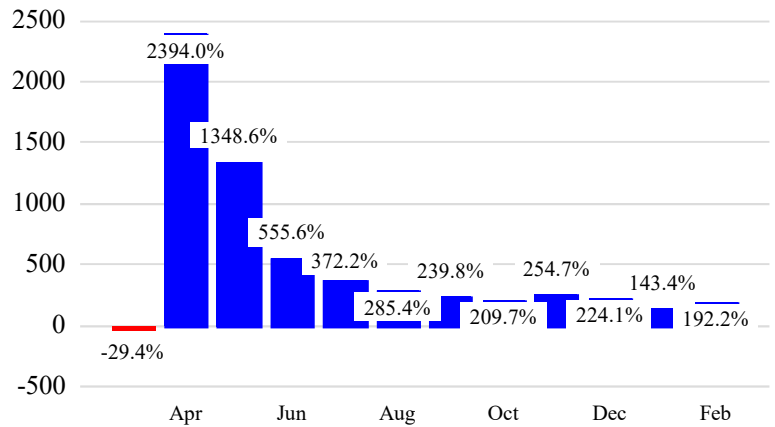


Revenue Passengers

	Curr Month	% Change
	7,225,409	192.2% ▲
Domestic	5,314,506	184.4%
International	1,910,903	216.4%
Non-Revenue	232,980	124.4%

Load Factors	Curr Month	Avg Load Factor
Domestic	60.4%	61.4%
International	64.1%	

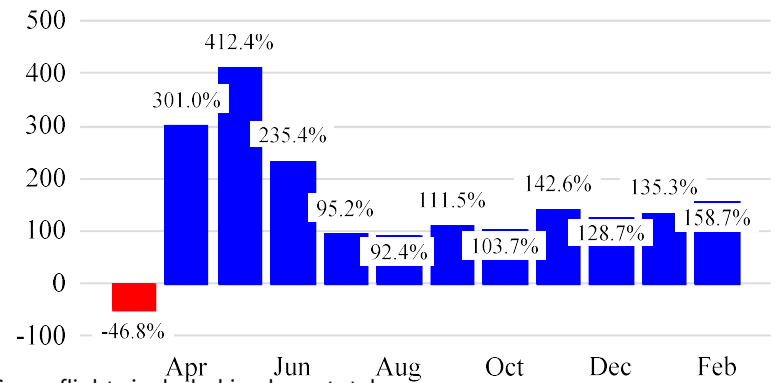
Year over Year % Change in Revenue Passengers - 12 Months



Total Flights

	Curr Month	% Change
	85,631	154.6% ▲
Excl GA	83,287	158.7% ▲
Domestic	68,476	190.9%
International	14,811	71.1%
Gen Aviation	2,344	62.7%
Cargo Flights*	2,170	-36.8%

Year over Year % Change in Total Flights (Excl GA) - 12 Months

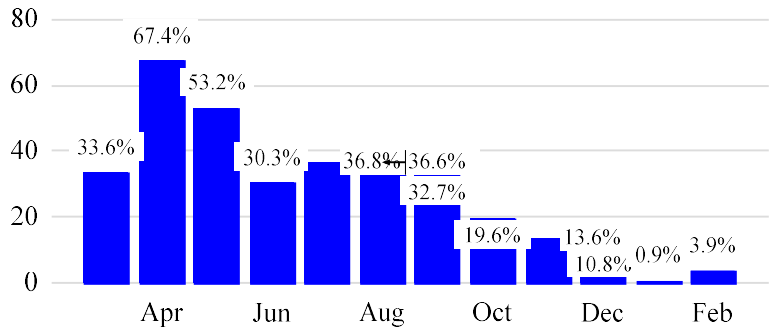


* Cargo flights included in above totals

Cargo (Short Tons)

	Curr Month	% Change
	161,284	3.8% ▲
Domestic	71,620	5.5%
International	89,663	2.5%
Mail	10,763	-1.7%

Year over Year % Change in Cargo - 12 Months



Top 5 Declines in Revenue Passengers by Airline

Airline	Pax Decline	% Decline
EASTERN	(4,192)	-92.0%
CHINA EASTERN	(810)	-40.0%
AIR SERBIA	(178)	-7.0%
ALIA ROYAL JORDAN.	(138)	-3.0%

Top 5 Increases in Revenue Passengers by Airline

Airline	Pax Increase	% Increase
UNITED	1,232,271	183.0%
DELTA	1,175,113	224.0%
JETBLUE AIRWAYS	731,849	124.0%
AMERICAN	666,622	242.0%
SPIRIT AIRLINES	141,806	118.0%

Airport Summary Statistics

JFK Summary

	Current Month	YoY %
Total Revenue Pax	3,086,044	216.0
Total Flights Including GA	31,022	135.0
Total Cargo (Short Tons)	102,921	1.7

EWR Summary

	Current Month	YoY %
Total Revenue Pax	2,586,753	142.0
Total Flights Including GA	27,057	99.0
Total Cargo (Short Tons)	56,576	8.6

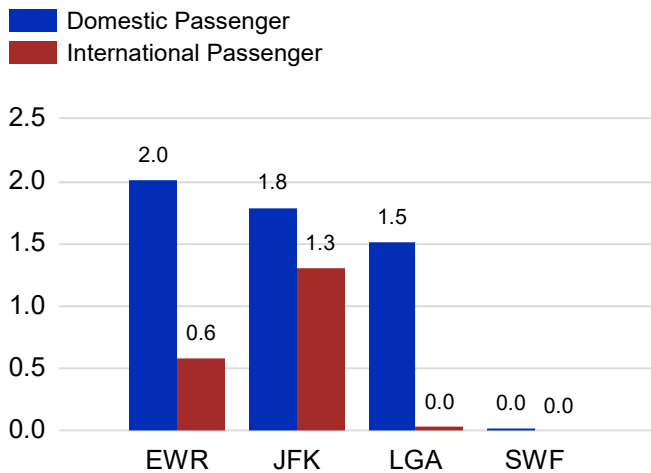
LGA Summary

	Current Month	YoY %
Total Revenue Pax	1,536,232	258.0
Total Flights Including GA	25,729	354.0
Total Cargo (Short Tons)	508	24.8

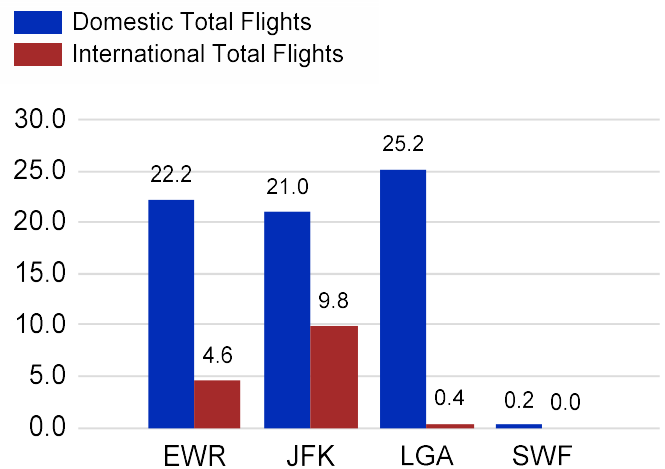
SWF Summary

	Current Month	YoY %
Total Revenue Pax	16,380	388.0
Total Flights Including GA	1,823	45.0
Total Cargo (Short Tons)	1,279	-19.3

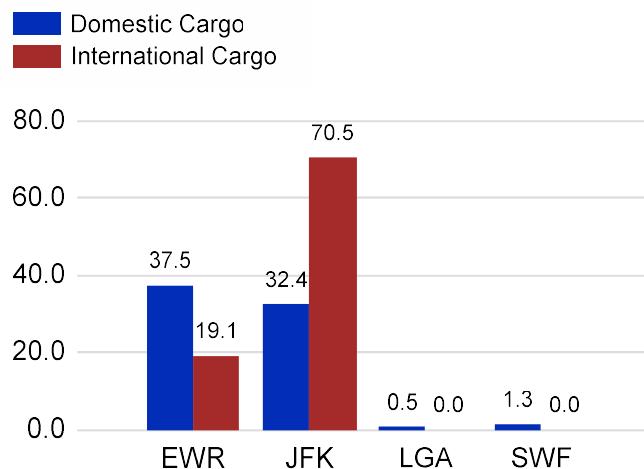
Total Passengers by Airport (Millions)



Total Flights by Airport (Thousands)



Total Cargo by Airport (Thousands of Short Tons)



12 Months Ending Passenger & Freight Statistics

Top 20 Airlines Ranking by Passengers & Freight: 12 Months Ending Feb 2022

Airline Name	Domestic	International	Total Pax	% of Tot	Airline Name	Short Tons	% of Tot
UNITED	16,614,175	4,778,058	21,392,233	25.36%	FEDERAL EXPRESS	443,566	18.67%
DELTA	16,831,688	2,780,180	19,611,868	23.25%	United	223,959	9.43%
JETBLUE AIRWAYS	11,614,228	4,574,835	16,189,063	19.20%	UNITED PARCEL	214,375	9.02%
AMERICAN	9,748,529	1,403,087	11,151,616	13.22%	DELTA	93,226	3.92%
SPIRIT AIRLINES	2,994,707	0	2,994,707	3.55%	ATLAS AIR	84,136	3.54%
SOUTHWEST AIRLINES	1,801,672		1,801,672	2.14%	KALITTA AIR LLC	83,724	3.52%
ALASKA AIRLINES	1,162,033		1,162,033	1.38%	AMERICAN	77,219	3.25%
FRONTIER AIRLINES	1,014,304	54,549	1,068,853	1.27%	AIR TRANSPORT INT'L.(BAX Inc.)	77,112	3.25%
EMIRATES AIRLINES		534,155	534,155	0.63%	CARGOLUX AIRLINES	64,525	2.72%
TURKISH AIR		527,028	527,028	0.62%	KOREAN	64,264	2.71%
AIR CANADA		473,786	473,786	0.56%	CHINA AIRLINES (CAL)	57,731	2.43%
Avianca		450,636	450,636	0.53%	CATHAY PACIFIC	51,618	2.17%
AIR FRANCE		346,332	346,332	0.41%	ABX AIR INC	50,857	2.14%
QATAR AIRWAYS		343,605	343,605	0.41%	LUFTHANSA CARGO	35,670	1.50%
COPA AIRLINES		342,287	342,287	0.41%	SAUDI ARABIAN AIRLINES	31,605	1.33%
BRITISH AIRWAYS		341,214	341,214	0.40%	TURKISH AIR	30,380	1.28%
LUFTHANSA CARGO		331,794	331,794	0.39%	BRITISH AIRWAYS	28,850	1.21%
AEROMEXICO		295,577	295,577	0.35%	VIRGIN ATLANTIC	27,650	1.16%
EL AL		278,759	278,759	0.33%	QATAR AIRWAYS	26,710	1.12%
ALLEGiant AIR	254,599		254,599	0.30%	AIR FRANCE	26,575	1.12%

Passengers & Freight by Market - 12 Months Ending

Market	Passengers	Freight (Short Tons)
TRANSATLANTIC	9,751,009	859,735
CANADA	670,499	1,629
CARIBBEAN + BERMUDA	6,438,515	14,415
CENTRAL AND SOUTH AMERICA	2,920,216	50,921
DOMESTIC	59,873,778	1,045,154
MEXICO	1,946,528	10,466
TRANSPACIFIC	374,825	383,523
PUERTO RICO	2,363,353	9,704

Additional Data

Airline Schedules (ADI): Non-Stop Destinations

	Region	Flights (Daily)	Cities
Domestic	Domestic	2447.8	102
	Puerto Rico	32.1	2
	Total	2,479.9	104.00
International	Canada	60.3	5
	Caribbean & Bermuda	147.0	24
	Central & South America	77.2	19
	Mexico	39.6	5
	Trans-Atlantic	182.8	47
	Trans-Pacific	14.2	7
	Total	521.1	107.00
Total		3,001.0	211.00

Airline Schedules (ADI): Carriers & Aircraft Type

	Aircraft Type	Flights (Daily)	Carriers
Domestic	Commuter	964.2	4
	General Aviation	2.0	1
	Narrow Body	1423.3	9
	Wide Body	90.4	4
Total	Total	2,479.9	18.00
International	Commuter	50.2	5
	Narrow Body	266.9	20
	Wide Body	204.1	51
	Total	521.1	76.00
Total	Total	3,001.0	94.00

Passenger Demographics (ACI ASQ Surveys - 2021)

Connect		Trip Type		Gender	
Local Origin/Destination	78.6%	Business	14.0%	M	49.6%
Connecting	21.4%	Leisure	86.0%	F	50.4%
Transport Mode		Annual Flights		Residency	
Bus/Shuttle	4.7%	1-2	61.5%	United States	81.0%
Other	18.7%	3-5	24.9%	Other	19.0%
Private/Company Car	37.5%	6-10	9.0%		
Rail/Subway	7.3%	11-20	2.8%		
Rental Car	4.6%	21+	1.8%		
Taxi/Limo	27.2%				

Ground Transportation

	Curr Month	% Change		Curr Month	% Change
<i>Paid Parked Cars</i>	289,685	101.7	<i>Total Air Train Passengers</i>	1,510,048	129.8
<i>GTC Bookings</i>	0		<i>Paid Howard Beach Passengers</i>	73,840	180.5
<i>Airport Coach Passengers</i>	14,124	628.0	<i>Paid Jamaica Passengers</i>	263,127	206.3
<i>Taxis Dispatched</i>	204,229	243.2	<i>Paid EWR Passengers</i>	108,114	192.7
			<i>On-Airport (Unpaid) Passengers</i>	1,064,967	109.7

Airlines for American Carriers (USA)

	Curr Month	% Change
<i>Freight:revenue ton miles (000)</i>	0	

Regional Airports: Other

	Curr Month	% Change
<i>TEB flight movements</i>	0	-100.0
<i>ISP Total passengers</i>	0	-100.0
<i>HPN Total passengers</i>	0	-100.0