

# **NEW JERSEY DEPARTMENT OF CORRECTIONS**

Gary M. Lanigan, Commissioner



## **OFFENDER CHARACTERISTICS REPORT**

**ON JANUARY 3, 2012**

Office of Policy and Planning  
January 2012

## INTRODUCTION

*This report has been developed to provide information regarding offender characteristics in each correctional complex, major institution and satellite housing-unit under the jurisdiction of the New Jersey Department of Corrections on January 3, 2012. The selected characteristics compiled in this report are Base Offense at Admission, Total Term at Admission, Ethnicity, Age, County of Commitment and Mandatory Minimum Term.*

*The Prison Complex includes, New Jersey State Prison, Central Reception and Assignment Facility, East Jersey State Prison, Bayside State Prison, Mid-State Correctional Facility, Southern State Correctional Facility, Northern State Prison, South Woods State Prison, Edna Mahan Correctional Facility for Women and the Adult Diagnostic and Treatment Center (ADTC), a facility for adult male sex offenders.*

*NOTE: In the data tables, separate subtotals are provided for ADTC and Edna Mahan Correctional Facility for Women due to the interest in these unique populations. The remainder of the Prison Complex is labeled "Male Offenders in Other Facilities".*

*The Youth Correctional Complex consists of Garden State Youth Correctional Facility, Albert C. Wagner Youth Correctional Facility and Mountainview Youth Correctional Facility.*

*"Halfway Houses, County Jails, St. Francis" include state-sentenced inmates housed in halfway houses, county jails, and Central Medical Unit (St. Francis Hospital).*

*"Not Coded" are records for offenders in the correctional system for whom admission characteristics data had not been entered into the computerized information system as of January 3, 2012.*

## HIGHLIGHTS

- *Fifty-four percent (54%) of all New Jersey Department of Corrections inmates were committed for crimes against persons which include Homicide, Sexual Assault, Aggravated/Simple Assault, Robbery, Kidnapping, Other Sex Offenses and Other Person Offenses.*
- *Twenty-two percent (22%) of all Department of Corrections inmates have been committed for narcotics law violations, including possession, sale and distribution. Eighty-three percent (83%) of all narcotics law violations are sale/distribution offenses.*
- *The median total term for Department of Corrections' inmates is 6 years.*
- *Thirty-five percent (35%) of all New Jersey Department of Corrections inmates were committed with total terms of 10 years or more. Of the total, five percent (5%) are serving Life Sentences with parole eligibility, and 61 offenders are serving Life Sentences without parole.*
- *Seventy-two percent (72%) of New Jersey Department of Corrections inmates housed in the State System have sentences that include mandatory minimum terms.*
- *Thirty-eight percent (38%) of all inmates in the New Jersey Department of Corrections are 30 years of age or younger. The median age for inmates in our adult facilities is 34.*
- *Sixty-one percent (61%) of New Jersey Department of Corrections' inmates are Black, while 22% are White and 16% are Hispanic.*
- *Of the 21 New Jersey counties, ten (Atlantic, Bergen, Camden, Essex, Hudson, Mercer, Middlesex, Monmouth, Passaic and Union) account for 79% of Total Department of Corrections inmates. Essex County is the highest contributor with 15%.*

## NOTES

### **DUE TO SOFTWARE AND ROUNDING:**

- **WORKSHEET ROW AND COLUMN TOTALS DO NOT ALWAYS EQUAL 100 PERCENT.**
- **PIE CHART PERCENTAGES DO NOT ALWAYS EQUAL 100%.**
- **PIE CHART PERCENTAGES MAY DIFFER SLIGHTLY FROM WORKSHEET PERCENTAGES.**
- **ACCOMPANYING NARRATIVES REFLECT PIE CHART PERCENTAGES.**

**TOTAL INMATES IN NEW JERSEY STATE CORRECTIONAL INSTITUTIONS AND SATELITE UNITS**

<b>TOTAL INMATES</b>		<b>23,810</b>
<b>PRISON COMPLEX</b>	<b>16,867</b>	<b>YOUTH COMPLEX</b>
<b>ADTC</b>	<b>713</b>	<b>GARDEN STATE TOTAL</b>
Bayside – Main	1,177	<b>MOUNTAINVIEW TOTAL</b>
Bayside – Farm	693	Wagner – Main
Bayside – Ancora	317	Wagner – Ad Seg
<b>BAYSIDE TOTAL</b>	<b>2,187</b>	Wagner – Minimum Units
CRAF – Jones Farm	278	<b>WAGNER TOTAL</b>
CRAF – Reception	639	<b>OTHER FACILITIES</b>
<b>CRAF TOTAL</b>	<b>917</b>	Central Medical Unit
East Jersey – Main	1,364	County Jail
East Jersey – Camp	113	Halfway Houses
<b>EAST JERSEY TOTAL</b>	<b>1,477</b>	
<b>EDNA MAHAN TOTAL</b>	<b>747</b>	
<b>MIDSTATE TOTAL</b>	<b>690</b>	
NJ State Prison – Ad Seg Female	27	
NJ State Prison – Main	1,922	
<b>NJ STATE PRISON TOTAL</b>	<b>1,949</b>	
Northern State – Main	1,918	
Northern State – Ad Seg Male	556	
<b>NORTHERN STATE TOTAL</b>	<b>2,474</b>	
<b>SOUTHERN STATE TOTAL</b>	<b>2,337</b>	
<b>SOUTH WOODS TOTAL</b>	<b>3,376</b>	

## TABLE OF CONTENTS

<b><u>REPORT NAME</u></b>	<b><u>PAGE</u></b>
<i>OFFENDERS IN NEW JERSEY CORRECTIONAL INSTITUTIONS BY BASE OFFENSE</i>	7
<i>Prison Complex Offenders</i>	8-11
<i>Youth Complex Offenders</i>	12
<i>Adult Offenders in Other Facilities</i>	13
<i>OFFENDERS IN NEW JERSEY CORRECTIONAL INSTITUTIONS BY TOTAL TERM AT ADMISSION</i>	14
<i>Prison Complex Offenders</i>	15-18
<i>Youth Complex Offenders</i>	19
<i>Adult Offenders in Other Facilities</i>	20
<i>OFFENDERS IN NEW JERSEY CORRECTIONAL INSTITUTIONS BY MANDATORY MINIMUM TERM</i>	21
<i>Prison Complex Offenders</i>	22-25
<i>Youth Complex Offenders</i>	26
<i>Adult Offenders in Other Facilities</i>	27
<i>OFFENDERS IN NEW JERSEY CORRECTIONAL INSTITUTIONS BY AGE</i>	28
<i>Prison Complex Offenders</i>	29-32
<i>Youth Complex Offenders</i>	33
<i>Adult Offenders in Other Facilities</i>	34
<i>OFFENDERS IN NEW JERSEY CORRECTIONAL INSTITUTIONS BY ETHNIC IDENTIFICATION</i>	35
<i>Prison Complex Offenders</i>	36-39
<i>Youth Complex Offenders</i>	40
<i>Adult Offenders in Other Facilities</i>	41
<i>OFFENDERS IN NEW JERSEY CORRECTIONAL INSTITUTIONS BY COUNTY OF COMMITMENT</i>	42
<i>Prison Complex Offenders</i>	43-46
<i>Youth Complex Offenders</i>	47
<i>Adult Offenders in Other Facilities</i>	48

***BASE OFFENSE***

**OFFENDERS IN NEW JERSEY CORRECTIONAL INSTITUTIONS  
ON JANUARY 3, 2012, BY BASE OFFENSE**

In these tabulations, the base offense is the most serious offense at the time of admission. These figures reflect base or controlling offenses at admission only, and do not include any offenses in addition to the base offense in the case of multiple sentences at admission. Additional sentences imposed following initial admission to the state correctional system are not included in these data.

- Violent offenses include homicide, sexual assault, aggravated and simple assault, robbery, kidnapping, other sex offenses and other person offenses (i.e. terroristic threats, coercion, larceny from a person, death by auto and negligent manslaughter).
- Property offenses include burglary, arson, theft, forgery, embezzlement, and receiving / possessing stolen property.
- Public policy offenses include racketeering, gambling, corruption, perjury, escape, bail jumping, juvenile and family related offenses, and conspiracy.
- Weapons offenses include weapon possession and operation.
- Drug violations include distribution, manufacture, possession, and use of drugs. Virtually all drug offenses are for sale and distribution rather than for mere possession.

**OFFENDERS IN CORRECTIONAL INSTITUTIONS BY BASE OFFENSE**

Base Offense	Total		Male Offenders in Other Facilities		Youth Complex		ADTC		Edna Mahan		*Halfway Houses, County Jails, St. Francis	
	#	%	#	%	#	%	#	%	#	%	#	%
TOTAL OFFENDERS	23,810	100%	15,407	100%	3,893	100%	713	100%	747	100%	3,050	100%
Violent Offenses	12,951	54%	9,208	60%	1,997	51%	701	98%	412	55%	633	21%
Property Offenses	2,461	10%	1,592	10%	342	9%	1	0%	113	15%	413	14%
Public Policy	969	4%	617	4%	150	4%	10	1%	62	8%	130	4%
Weapons	2,057	9%	987	6%	657	17%	0	0%	12	2%	401	13%
Drugs	5,224	22%	2,984	19%	747	19%	1	0%	143	19%	1,349	44%
Not Coded	148	1%	19	0%	0	0%	0	0%	5	1%	124	4%

- Inmates with violent offenses comprise 60% of Male Offenders in Other Facilities, 51% of the Youth Complex, 98% of ADTC, 55% of Edna Mahan, and 21% of Other Facilities.
- \* Halfway houses, county jails, and Central Medical Unit (Saint Francis Hospital).

### Prison Complex Offenders By Base Offense

Institution	Total	Violent Offenses	Homicide	Sexual Assault	Assault	Robbery	Kidnap	Other Sex	Other Person	Property	Public Policy	Weapons	Drugs	Not Coded
<b>Bayside Main</b>	1,177 100%	553 47%	112 10%	19 2%	153 13%	239 20%	5 0%	20 2%	5 0%	142 12%	62 5%	127 11%	293 25%	0 0%
<b>Bayside Farm</b>	693 100%	396 57%	107 15%	0 0%	107 15%	171 25%	3 0%	3 0%	5 1%	83 12%	28 4%	57 8%	129 19%	0 0%
<b>Bayside Ancora</b>	317 100%	37 12%	1 0%	0 0%	6 2%	26 8%	0 0%	0 0%	4 1%	68 21%	16 5%	41 13%	155 49%	0 0%
<b>Bayside Total</b>	2,187 100%	986 45%	220 10%	19 1%	266 12%	436 20%	8 0%	23 1%	14 1%	293 13%	106 5%	225 10%	577 26%	0 0%
<b>CRAF Jones Farm</b>	278 100%	4 1%	0 0%	0 0%	1 0%	1 0%	1 0%	0 0%	1 0%	108 39%	14 5%	1 0%	151 54%	0 0%
<b>CRAF Reception</b>	639 100%	194 30%	22 3%	14 2%	53 8%	63 10%	3 0%	28 4%	11 2%	133 21%	49 8%	50 8%	206 32%	7 1%
<b>CRAF Total</b>	917 100%	198 22%	22 2%	14 2%	54 6%	64 7%	4 0%	28 3%	12 1%	241 26%	63 7%	51 6%	357 39%	7 1%
<b>East Jersey Main</b>	1,364 100%	1,200 88%	639 47%	74 5%	62 5%	369 27%	50 4%	3 0%	3 0%	22 2%	16 1%	38 3%	88 6%	0 0%
<b>East Jersey Camp</b>	113 100%	48 42%	2 2%	0 0%	15 13%	30 27%	0 0%	1 1%	0 0%	22 19%	3 3%	5 4%	35 31%	0 0%
<b>East Jersey Total</b>	1,477 100%	1,248 84%	641 43%	74 5%	77 5%	399 27%	50 3%	4 0%	3 0%	44 3%	19 1%	43 3%	123 8%	0 0%

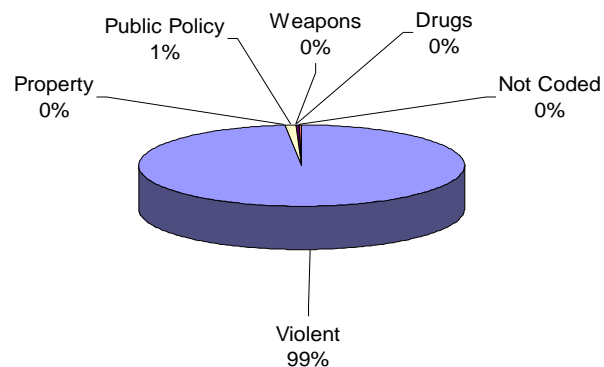
### Prison Complex Offenders By Base Offense

Institution	Total	Violent Offenses	Homicide	Sexual Assault	Assault	Robbery	Kidnap	Other Sex	Other Person	Property	Public Policy	Weapons	Drugs	Not Coded
Midstate	690 100%	396 57%	23 3%	118 17%	61 9%	66 10%	6 1%	112 16%	10 1%	99 14%	32 5%	40 6%	123 18%	0 0%
NJ State Prison Ad Seg Female	27 100%	14 52%	4 15%	0 0%	4 15%	6 22%	0 0%	0 0%	0 0%	5 19%	3 11%	1 4%	4 15%	0 0%
NJ State Prison Main	1,922 100%	1,716 89%	1,150 60%	86 4%	78 4%	316 16%	66 3%	8 0%	12 1%	37 2%	23 1%	46 2%	90 5%	10 1%
NJ State Prison Total	1,949 100%	1,730 89%	1,154 59%	86 4%	82 4%	322 17%	66 3%	8 0%	12 1%	42 2%	26 1%	47 2%	94 5%	10 1%
Northern Main	1,918 100%	1,261 66%	373 19%	117 6%	216 11%	488 25%	37 2%	27 1%	3 0%	146 8%	87 5%	108 6%	316 16%	0 0%
Northern Ad Seg Male	556 100%	309 56%	67 12%	19 3%	72 13%	139 25%	3 1%	6 1%	3 1%	57 10%	31 6%	46 8%	113 20%	0 0%
Northern Total	2,474 100%	1,570 63%	440 18%	136 5%	288 12%	627 25%	40 2%	33 1%	6 0%	203 8%	118 5%	154 6%	429 17%	0 0%
Southern	2,337 100%	789 34%	83 4%	34 1%	273 12%	347 15%	8 0%	35 1%	9 0%	377 16%	127 5%	229 10%	815 35%	0 0%
South Woods	3,376 100%	2,291 68%	652 19%	306 9%	360 11%	802 24%	53 2%	98 3%	20 1%	293 9%	126 4%	198 6%	466 14%	2 0%
<b>Subtotal Male Offenders in Other Facilities</b>	<b>15,407 100%</b>	<b>9,208 60%</b>	<b>3,235 21%</b>	<b>787 5%</b>	<b>1,461 9%</b>	<b>3,063 20%</b>	<b>235 2%</b>	<b>341 2%</b>	<b>86 1%</b>	<b>1,592 10%</b>	<b>617 4%</b>	<b>987 6%</b>	<b>2,984 19%</b>	<b>19 0%</b>

## Prison Complex Offenders By Base Offense

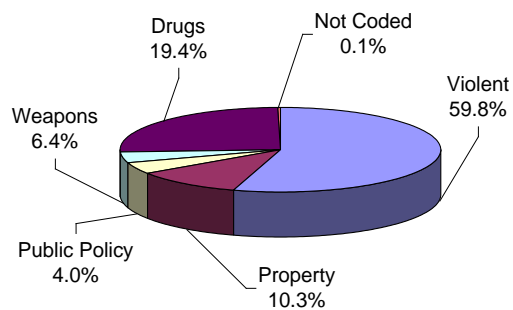
Institution	Total	Violent Offenses	Homicide	Sexual Assault	Assault	Robbery	Kidnap	Other Sex	Other Person	Property	Public Policy	Weapons	Drugs	Not Coded
ADTC	713 100%	701 98%	3 0%	587 82%	2 0%	5 1%	19 3%	72 10%	13 2%	1 0%	10 1%	0 0%	1 0%	0 0%
<b>Subtotal</b>	<b>16,120 100%</b>	<b>9,909 61%</b>	<b>3,238 20%</b>	<b>1,374 9%</b>	<b>1,463 9%</b>	<b>3,068 19%</b>	<b>254 2%</b>	<b>413 3%</b>	<b>99 1%</b>	<b>1,593 10%</b>	<b>627 4%</b>	<b>987 6%</b>	<b>2,985 19%</b>	<b>19 0%</b>
Mahan - Female Prison	747 100%	412 55%	187 25%	12 2%	77 10%	96 13%	7 1%	29 4%	4 1%	113 15%	62 8%	12 2%	143 19%	5 1%
<b>Total Prison Complex</b>	<b>16,867 100%</b>	<b>10,321 61%</b>	<b>3,425 20%</b>	<b>1,386 8%</b>	<b>1,540 9%</b>	<b>3,164 19%</b>	<b>261 2%</b>	<b>442 3%</b>	<b>103 1%</b>	<b>1,706 10%</b>	<b>689 4%</b>	<b>999 6%</b>	<b>3,128 19%</b>	<b>24 0%</b>

### ADTC



Virtually all offenders at ADTC were committed for violent offenses.

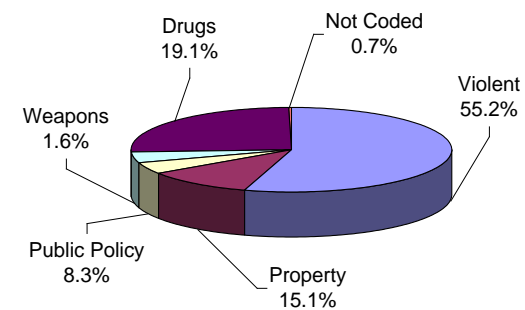
### MALE OFFENDERS IN OTHER FACILITIES



Sixty percent (60%) of Male Offenders in Other Facilities were convicted of a violent offense.

Nineteen percent (19%) of all Male Offenders in Other Facilities were convicted of drug offenses.

### FEMALE OFFENDERS



Violent offenses were the most frequent commitment-offenses at Edna Mahan (55.2%).

Nineteen percent (19%) of female inmates were committed for drug offenses.

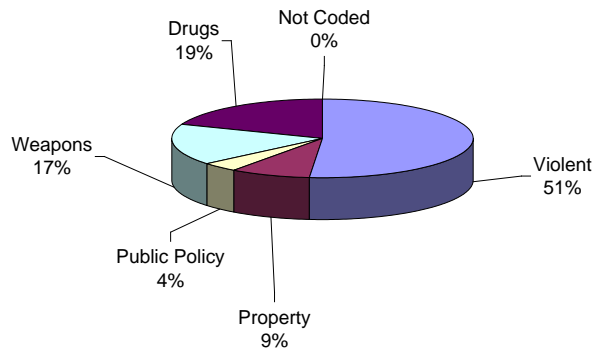
### Youth Complex Offenders By Base Offense

Institution	Total	Violent Offenses	Homicide	Sexual Assault	Assault	Robbery	Kidnap	Other Sex	Other Person	Property	Public Policy	Weapons	Drugs	Not Coded
<b>Garden State</b>	1,801 100%	1049 58%	162 9%	94 5%	229 13%	508 28%	13 1%	37 2%	6 0%	137 8%	66 4%	271 15%	278 15%	0 0%
<b>Mountainview</b>	1,054 100%	361 34%	22 2%	13 1%	92 9%	217 21%	2 0%	11 1%	4 0%	123 12%	48 5%	228 22%	294 28%	0 0%
<b>Wagner Main</b>	609 100%	367 60%	51 8%	9 1%	96 16%	195 32%	3 0%	7 1%	6 1%	45 7%	21 3%	82 13%	94 15%	0 0%
<b>Wagner Ad Seg</b>	290 100%	155 53%	13 4%	5 2%	41 14%	89 31%	1 0%	5 2%	1 0%	26 9%	8 3%	47 16%	54 19%	0 0%
<b>Wagner Minimum Units</b>	139 100%	65 47%	9 6%	0 0%	19 14%	34 24%	3 2%	0 0%	0 0%	11 8%	7 5%	29 21%	27 19%	0 0%
<b>Wagner Total</b>	1,038 100%	587 57%	73 7%	14 1%	156 15%	318 31%	7 1%	12 1%	7 1%	82 8%	36 3%	158 15%	175 17%	0 0%
<b>Total Youth Complex</b>	<b>3,893 100%</b>	<b>1,997 51%</b>	<b>257 7%</b>	<b>121 3%</b>	<b>477 12%</b>	<b>1,043 27%</b>	<b>22 1%</b>	<b>60 2%</b>	<b>17 0%</b>	<b>342 9%</b>	<b>150 4%</b>	<b>657 17%</b>	<b>747 19%</b>	<b>0 0%</b>

## Offenders In Halfway Houses, County Jails, and St. Francis By Base Offense

Institution	Total	Violent Offenses	Homicide	Sexual Assault	Assault	Robbery	Kidnap	Other Sex	Other Person	Property	Public Policy	Weapons	Drugs	Not Coded
Central Medical Unit	8	5	1	1	1	2	0	0	0	0	0	1	2	0
	100%	63%	13%	13%	13%	25%	0%	0%	0%	0%	0%	13%	25%	0%
County Jail	178	18	1	2	4	9	0	2	0	8	8	1	19	124
	100%	10%	1%	1%	2%	5%	0%	1%	0%	4%	4%	1%	11%	70%
Halfway House	2,864	610	77	0	172	332	4	19	6	405	122	399	1,328	0
	100%	21%	3%	0%	6%	12%	0%	1%	0%	14%	4%	14%	46%	0%
<b>Total Halfway Houses, County Jails, St. Francis</b>	<b>3,050</b>	<b>633</b>	<b>79</b>	<b>3</b>	<b>177</b>	<b>343</b>	<b>4</b>	<b>21</b>	<b>6</b>	<b>413</b>	<b>130</b>	<b>401</b>	<b>1,349</b>	<b>124</b>
	<b>100%</b>	<b>21%</b>	<b>3%</b>	<b>0%</b>	<b>6%</b>	<b>11%</b>	<b>0%</b>	<b>1%</b>	<b>0%</b>	<b>14%</b>	<b>4%</b>	<b>13%</b>	<b>44%</b>	<b>4%</b>

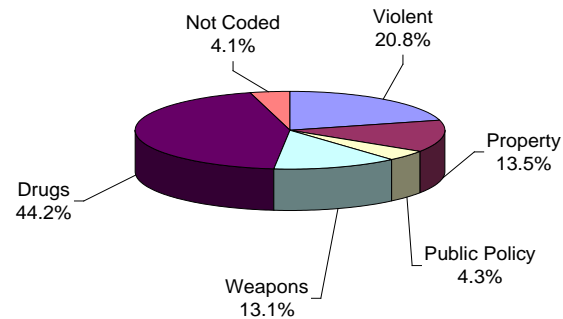
### YOUTH COMPLEX



Fifty-one percent (51%) of offenders housed in the youth complex were incarcerated for violent offenses.

Nineteen percent (19%) of offenders housed in the youth complex were incarcerated for drug offenses and 9% for property offenses.

### HALFWAY HOUSES, COUNTY JAILS, ST. FRANCIS



Offenders housed in county jails and halfway houses are less serious offenders than the Male Offenders in Other Facilities (i.e. 21% violent offenders vs. 59.8% Male Offenders in Other Facilities with violent offenses).

Forty-four percent (44%) of offenders housed in "Other Facilities" were committed for drug offenses.

***TOTAL MAXIMUM TERM AT ADMISSION***

**OFFENDERS IN NEW JERSEY CORRECTIONAL INSTITUTIONS  
ON JANUARY 3, 2012, BY TOTAL TERM AT ADMISSION**

Total term at admission is the total maximum term imposed for each offender at the time of commitment from the community or from parole. This includes the aggregate term for those admitted with multiple sentences. Additional sentences received following initial admission are not reflected or included in the data.

**OFFENDERS IN NEW JERSEY CORRECTIONAL INSTITUTIONS BY TOTAL TERM AT ADMISSION**

Total Term	Total		Male Offenders in Other Facilities		Youth Complex		ADTC		Edna Mahan		Halfway Houses, County Jails, St. Francis	
	#	%	#	%	#	%	#	%	#	%	#	%
TOTAL OFFENDERS	23,810	100%	15,407	100%	3,893	100%	713	100%	747	100%	3,050	100%
1-2 Years	863	4%	645	4%	125	3%	7	1%	31	4%	55	2%
3 Years	3,343	14%	1,834	12%	847	22%	36	5%	152	20%	474	16%
4 Years	2,307	10%	1,273	8%	483	12%	20	3%	84	11%	447	15%
5 Years	4,188	18%	2,217	14%	977	25%	63	9%	117	16%	814	27%
6 Years	1,297	5%	699	5%	281	7%	38	5%	33	4%	246	8%
7 Years	1,470	6%	823	5%	300	8%	81	11%	30	4%	236	8%
8-9 Years	1,499	6%	891	6%	263	7%	71	10%	36	5%	238	8%
10 Years	1,431	6%	919	6%	198	5%	107	15%	45	6%	162	5%
11-14 Years	1,401	6%	998	6%	162	4%	77	11%	35	5%	129	4%
15 Years	701	3%	538	3%	65	2%	47	7%	27	4%	24	1%
16-20 Years	1,253	5%	1,007	7%	92	2%	63	9%	47	6%	44	1%
21+ Years	2,321	10%	2,084	14%	35	1%	99	14%	67	9%	36	1%
Life With Parole	1,157	5%	1,131	7%	0	0%	3	0%	23	3%	0	0%
Life Without Parole	61	0%	61	0%	0	0%	0	0%	0	0%	0	0%
Not Coded	518	2%	287	2%	65	2%	1	0%	20	3%	145	5%

Among New Jersey Adult Correctional Offenders:

- The median term for adult offenders is 6 years.
- Forty-six percent (46%) are serving terms of 1-5 years.
- Seventeen percent (17%) are serving terms of 6-9 years.
- Thirty-five percent (35%) are serving terms of 10 years or more, which includes 1,157 offenders serving life and 61 serving life without parole sentences.
- Two percent (2%) were not coded.

### Prison Complex Offenders By Total Term At Admission

Institution	Total	1-2 Years	3 Years	4 Years	5 Years	6 Years	7 Years	8-9 Years	10 Years	11-14 Years	15 Years	16-20 Years	20+ Years	Life With Parole	Life Without Parole	Not Coded
<b>Bayside Main</b>	1,177 100%	46 4%	165 14%	125 11%	221 19%	82 7%	82 7%	103 9%	105 9%	81 7%	39 3%	52 4%	50 4%	12 1%	0 0%	14 1%
<b>Bayside Farm</b>	693 100%	27 4%	112 16%	88 13%	118 17%	27 4%	42 6%	42 6%	37 5%	61 9%	25 4%	51 7%	50 7%	0 0%	0 0%	13 2%
<b>Bayside Ancora</b>	317 100%	22 7%	79 25%	42 13%	70 22%	17 5%	15 5%	24 8%	14 4%	8 3%	4 1%	2 1%	3 1%	0 0%	0 0%	17 5%
<b>Bayside Total</b>	2,187 100%	95 4%	356 16%	255 12%	409 19%	126 6%	139 6%	169 8%	156 7%	150 7%	68 3%	105 5%	103 5%	12 1%	0 0%	44 2%
<b>CRAF Jones Farm</b>	278 100%	29 10%	116 42%	57 21%	35 13%	13 5%	7 3%	4 1%	3 1%	1 0%	0 0%	0 0%	0 0%	0 0%	0 0%	13 5%
<b>CRAF Reception</b>	639 100%	85 13%	150 23%	78 12%	118 18%	30 5%	26 4%	23 4%	20 3%	14 2%	7 1%	12 2%	8 1%	1 0%	0 0%	67 10%
<b>CRAF Total</b>	917 100%	114 12%	266 29%	135 15%	153 17%	43 5%	33 4%	27 3%	23 3%	15 2%	7 1%	12 1%	8 1%	1 0%	0 0%	80 9%
<b>East Jersey Main</b>	1,364 100%	7 1%	10 1%	10 1%	26 2%	6 0%	14 1%	43 3%	73 5%	136 10%	91 7%	243 18%	456 33%	249 18%	0 0%	0 0%
<b>East Jersey Camp</b>	113 100%	7 6%	19 17%	14 12%	19 17%	2 2%	5 4%	4 4%	5 4%	13 12%	11 10%	5 4%	7 6%	0 0%	0 0%	2 2%
<b>East Jersey Total</b>	1,477 100%	14 1%	29 2%	24 2%	45 3%	8 1%	19 1%	47 3%	78 5%	149 10%	102 7%	248 17%	463 31%	249 17%	0 0%	2 0%

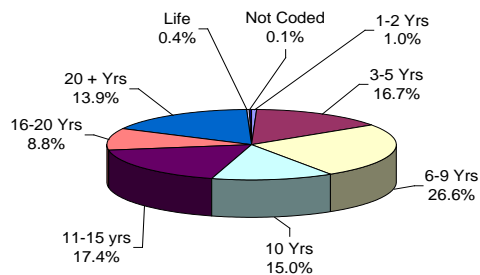
### Prison Complex Offenders By Total Term At Admission

Institution	Total	1-2 Years	3 Years	4 Years	5 Years	6 Years	7 Years	8-9 Years	10 Years	11-14 Years	15 Years	16-20 Years	20+ Years	Life With Parole	Life Without Parole	Not Coded
<b>Midstate</b>	690 100%	75 11%	143 21%	106 15%	165 24%	47 7%	57 8%	33 5%	18 3%	14 2%	5 1%	3 0%	9 1%	1 0%	0 0%	14 2%
<b>NJ State Prison Ad Seg Female</b>	27 100%	1 4%	6 22%	5 19%	4 15%	3 11%	2 7%	2 7%	0 0%	1 4%	1 4%	1 4%	1 4%	0 0%	0 0%	0 0%
<b>NJ State Prison Main</b>	1,922 100%	14 1%	57 3%	34 2%	78 4%	21 1%	25 1%	31 2%	36 2%	29 2%	33 2%	70 4%	810 42%	605 31%	61 3%	18 1%
<b>NJ State Prison Total</b>	1,949 100%	15 1%	63 3%	39 2%	82 4%	24 1%	27 1%	33 2%	36 2%	30 2%	34 2%	71 4%	811 42%	605 31%	61 3%	18 1%
<b>Northern Main</b>	1,918 100%	57 3%	176 9%	130 7%	263 14%	111 6%	95 5%	119 6%	170 9%	180 9%	92 5%	165 9%	243 13%	99 5%	0 0%	18 1%
<b>Northern Ad Seg Male</b>	556 100%	17 3%	79 14%	53 10%	87 16%	27 5%	53 10%	41 7%	35 6%	53 10%	25 4%	29 5%	40 7%	12 2%	0 0%	5 1%
<b>Northern Total</b>	2,474 100%	74 3%	255 10%	183 7%	350 14%	138 6%	148 6%	160 6%	205 8%	233 9%	117 5%	194 8%	283 11%	111 4%	0 0%	23 1%
<b>Southern</b>	2,337 100%	145 6%	425 18%	316 14%	547 23%	161 7%	165 7%	178 8%	144 6%	97 4%	23 1%	39 2%	19 1%	3 0%	0 0%	75 3%
<b>South Woods</b>	3,376 100%	113 3%	297 9%	215 6%	466 14%	152 5%	235 7%	244 7%	259 8%	310 9%	182 5%	335 10%	388 11%	149 4%	0 0%	31 1%
<b>Subtotal Male Offenders in Other Facilities</b>	<b>15,407 100%</b>	645 4%	1,834 12%	1,273 8%	2,217 14%	699 5%	823 5%	891 6%	919 6%	998 6%	538 3%	1,007 7%	2,084 14%	1,131 7%	61 0%	287 2%

## Prison Complex Offenders By Total Term At Admission

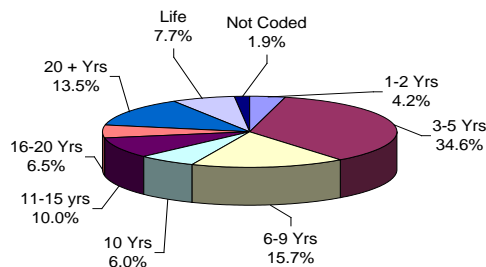
Institution	Total	1-2 Years	3 Years	4 Years	5 Years	6 Years	7 Years	8-9 Years	10 Years	11-14 Years	15 Years	16-20 Years	20+ Years	Life With Parole	Life Without Parole	Not Coded
ADTC	713 100%	7 1%	36 5%	20 3%	63 9%	38 5%	81 11%	71 10%	107 15%	77 11%	47 7%	63 9%	99 14%	3 0%	0 0%	1 0%
<b>SUBTOTAL</b>	<b>16,120</b> <b>100%</b>	<b>652</b> <b>4%</b>	<b>1,870</b> <b>12%</b>	<b>1,293</b> <b>8%</b>	<b>2,280</b> <b>14%</b>	<b>737</b> <b>5%</b>	<b>904</b> <b>6%</b>	<b>962</b> <b>6%</b>	<b>1,026</b> <b>6%</b>	<b>1,075</b> <b>7%</b>	<b>585</b> <b>4%</b>	<b>1,070</b> <b>7%</b>	<b>2,183</b> <b>14%</b>	<b>1,134</b> <b>7%</b>	<b>61</b> <b>0%</b>	<b>288</b> <b>2%</b>
Mahan - Female Prison	747 100%	31 4%	152 20%	84 11%	117 16%	33 4%	30 4%	36 5%	45 6%	35 5%	27 4%	47 6%	67 9%	23 3%	0 0%	20 3%
<b>Total Prison Complex</b>	<b>16,867</b> <b>100%</b>	<b>683</b> <b>4%</b>	<b>2,022</b> <b>12%</b>	<b>1,377</b> <b>8%</b>	<b>2,397</b> <b>14%</b>	<b>770</b> <b>5%</b>	<b>934</b> <b>6%</b>	<b>998</b> <b>6%</b>	<b>1,071</b> <b>6%</b>	<b>1,110</b> <b>7%</b>	<b>612</b> <b>4%</b>	<b>1,117</b> <b>7%</b>	<b>2,250</b> <b>13%</b>	<b>1,157</b> <b>7%</b>	<b>61</b> <b>0%</b>	<b>308</b> <b>2%</b>

### ADTC



The median term at ADTC is 10 years.

### MALE OFFENDERS IN OTHER FACILITIES

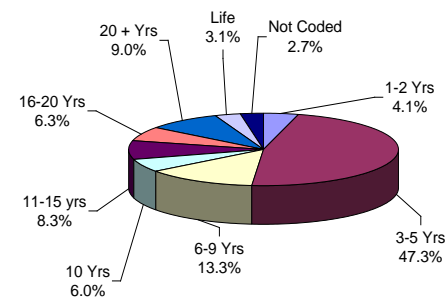


The median term for Male Offenders in Other Facilities is 7 years.

Twenty-eight percent (28%) of all Male Offenders in Other Facilities are serving sentences of 16 years or more.

Eighty percent (80%) of all offenders at New Jersey State Prison are serving sentences of 16

### FEMALE OFFENDERS



The median term at Edna Mahan is 5 years.

Fifty-one percent (51%) of the female offenders at Edna Mahan Correctional Facility for Women are serving sentences of 5 years or less.

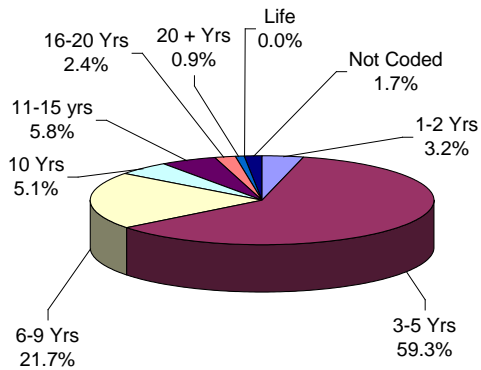
### Youth Complex Offenders By Total Term At Admission

Institution	Total	1-2 Years	3 Years	4 Years	5 Years	6 Years	7 Years	8-9 Years	10 Years	11-14 Years	15 Years	16-20 Years	20+ Years	Life With Parole	Life Without Parole	Not Coded
<b>Garden State</b>	1,801	64	302	203	444	121	152	154	109	95	40	68	30	0	0	19
	100%	4%	17%	11%	25%	7%	8%	9%	6%	5%	2%	4%	2%	0%	0%	1%
<b>Mountainview</b>	1,054	37	330	157	292	82	61	45	21	8	0	1	0	0	0	20
	100%	4%	31%	15%	28%	8%	6%	4%	2%	1%	0%	0%	0%	0%	0%	2%
<b>Wagner Main</b>	609	14	113	63	136	45	55	38	46	42	19	17	3	0	0	18
	100%	2%	19%	10%	22%	7%	9%	6%	8%	7%	3%	3%	0%	0%	0%	3%
<b>Wagner Ad Seg</b>	290	6	67	41	77	20	18	16	19	10	3	5	2	0	0	6
	100%	2%	23%	14%	27%	7%	6%	6%	7%	3%	1%	2%	1%	0%	0%	2%
<b>Wagner Minimum Units</b>	139	4	35	19	28	13	14	10	3	7	3	1	0	0	0	2
	100%	3%	25%	14%	20%	9%	10%	7%	2%	5%	2%	1%	0%	0%	0%	1%
<b>Wagner Total</b>	1,038	24	215	123	241	78	87	64	68	59	25	23	5	0	0	26
	100%	2%	21%	12%	23%	8%	8%	6%	7%	6%	2%	2%	0%	0%	0%	3%
<b>Total Youth Complex</b>	<b>3,893</b>	<b>125</b>	<b>847</b>	<b>483</b>	<b>977</b>	<b>281</b>	<b>300</b>	<b>263</b>	<b>198</b>	<b>162</b>	<b>65</b>	<b>92</b>	<b>35</b>	<b>0</b>	<b>0</b>	<b>65</b>
	<b>100%</b>	<b>3%</b>	<b>22%</b>	<b>12%</b>	<b>25%</b>	<b>7%</b>	<b>8%</b>	<b>7%</b>	<b>5%</b>	<b>4%</b>	<b>2%</b>	<b>2%</b>	<b>1%</b>	<b>0%</b>	<b>0%</b>	<b>2%</b>

## Offenders In Halfway Houses, County Jails, and St. Francis By Total Term At Admission

Institution	Total	1-2 Years	3 Years	4 Years	5 Years	6 Years	7 Years	8-9 Years	10 Years	11-14 Years	15 Years	16-20 Years	20+ Years	Life	Capital	Not Coded
Central Medical Unit	8 100%	0 0%	1 13%	0 0%	3 38%	0 0%	0 0%	1 13%	1 13%	1 13%	0 0%	0 0%	1 13%	0 0%	0 0%	0 0%
County Jail	178 100%	6 3%	16 9%	8 4%	2 1%	1 1%	3 2%	3 2%	0 0%	1 1%	0 0%	0 0%	0 0%	0 0%	0 0%	138 78%
Halfway House	2,864 100%	49 2%	457 16%	439 15%	809 28%	245 9%	233 8%	234 8%	161 6%	127 4%	24 1%	44 2%	35 1%	0 0%	0 0%	7 0%
<b>Total Halfway Houses, County Jails, St. Francis</b>	<b>3,050 100%</b>	<b>55 2%</b>	<b>474 16%</b>	<b>447 15%</b>	<b>814 27%</b>	<b>246 8%</b>	<b>236 8%</b>	<b>238 8%</b>	<b>162 5%</b>	<b>129 4%</b>	<b>24 1%</b>	<b>44 1%</b>	<b>36 1%</b>	<b>0 0%</b>	<b>0 0%</b>	<b>145 5%</b>

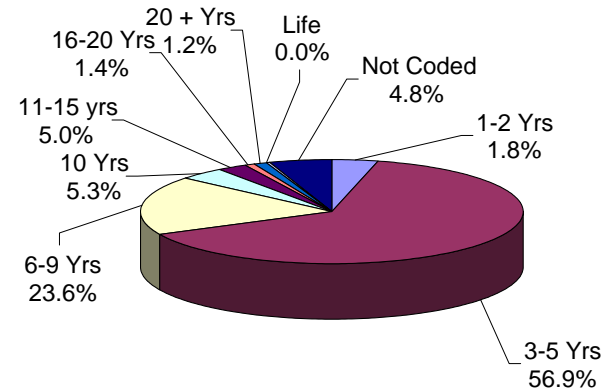
### YOUTH COMPLEX



The median youth complex term is 5 years.

No youth complex offenders are currently serving life sentences.

### HALFWAY HOUSES, COUNTY JAILS, ST. FRANCIS



The median term for offenders housed in Halfway Houses, County Jails, and St. Francis is 5 years.

Fifty-nine percent (59%) of offenders housed in Halfway Houses, County Jails, and St. Francis are serving terms of 5 years or less.

***MANDATORY MINIMUM TERM***

**OFFENDERS IN NEW JERSEY CORRECTIONAL INSTITUTIONS  
ON JANUARY 3, 2012, BY MANDATORY MINIMUM TERM**

In New Jersey, since 1979, the courts have utilized mandatory minimum sentences. This means that an offender must serve the entire minimum sentence before being eligible for parole consideration. Mandatory minimum terms are not reduced by earned credits (commutation, minimum security, or work).

**OFFENDERS IN CORRECTIONAL INSTITUTIONS BY MANDATORY MINIMUM TERM**

Mandatory Minimum Term	Total		Male Offenders in Other Facilities		Youth Complex		ADTC		Edna Mahan		Halfway Houses, County Jails, St. Francis	
	#	%	#	%	#	%	#	%	#	%	#	%
TOTAL OFFENDERS	17,225	100%	11,199	100%	2,856	100%	554	100%	446	100%	2,170	100%
<18 Months	890	5%	337	3%	333	12%	0	0%	22	5%	198	9%
18 Months	476	3%	260	2%	104	4%	0	0%	4	1%	108	5%
2 Years	906	5%	504	5%	130	5%	3	1%	16	4%	253	12%
3 Years	3,086	18%	1,549	14%	668	23%	13	2%	59	13%	797	37%
4 Years	1,019	6%	567	5%	185	6%	6	1%	20	4%	241	11%
5 Years	1,824	11%	1,039	9%	438	15%	48	9%	52	12%	247	11%
6-9 Years	3,358	19%	2,068	18%	705	25%	268	48%	90	20%	227	10%
10 Years	235	1%	176	2%	20	1%	23	4%	5	1%	11	1%
11-14 Years	1,617	9%	1232	11%	173	6%	100	18%	55	12%	57	3%
15 Years	308	2%	242	2%	18	1%	21	4%	11	2%	16	1%
16-19 Years	920	5%	779	7%	60	2%	34	6%	41	9%	6	0%
20-24 Years	479	3%	434	4%	13	0%	14	3%	15	3%	3	0%
25-29 Years	377	2%	354	3%	4	0%	14	3%	4	1%	1	0%
30 Years	851	5%	802	7%	4	0%	5	1%	35	8%	5	0%
30+ Years	879	5%	856	8%	1	0%	5	1%	17	4%	0	0%

- Seventy-two percent (72%) of all adult offenders have mandatory minimum terms (17,225 out of 23,810).
- The median mandatory minimum term is 5 years.
- Twenty-two percent (22%) of those with mandatory minimum terms have mandatory minimum terms of 15 years or more.

### Prison Complex Offenders By Mandatory Minimum Term

Institution	Total	< 18 Months	18 Months	2 Years	3 Years	4 Years	5 Years	6-9 Years	10 Years	11-14 Years	15 Years	16-19 Years	20-24 Years	25-29 Years	30 Years	30+ Years
<b>Bayside Main</b>	830 100%	26 3%	21 3%	51 6%	159 19%	63 8%	146 18%	212 26%	16 2%	67 8%	13 2%	26 3%	12 1%	6 1%	11 1%	1 0%
<b>Bayside Farm</b>	472 100%	26 6%	17 4%	30 6%	72 15%	31 7%	44 9%	100 21%	8 2%	75 16%	21 4%	27 6%	10 2%	0 0%	11 2%	0 0%
<b>Bayside Ancora</b>	180 100%	24 13%	18 10%	17 9%	58 32%	11 6%	28 16%	18 10%	1 1%	5 3%	0 0%	0 0%	0 0%	0 0%	0 0%	0 0%
<b>Bayside Total</b>	1,482 100%	76 5%	56 4%	98 7%	289 20%	105 7%	218 15%	330 22%	25 2%	147 10%	34 2%	53 4%	22 1%	6 0%	22 1%	1 0%
<b>CRAF Jones Farm</b>	70 100%	20 29%	9 13%	16 23%	21 30%	2 3%	2 3%	0 0%	0 0%	0 0%	0 0%	0 0%	0 0%	0 0%	0 0%	0 0%
<b>CRAF Reception</b>	265 100%	21 8%	16 6%	30 11%	87 33%	15 6%	31 12%	37 14%	4 2%	12 5%	1 0%	8 3%	2 1%	1 0%	0 0%	0 0%
<b>CRAF Total</b>	335 100%	41 12%	25 7%	46 14%	108 32%	17 5%	33 10%	37 11%	4 1%	12 4%	1 0%	8 2%	2 1%	1 0%	0 0%	0 0%
<b>East Jersey Main</b>	1,284 100%	2 0%	3 0%	5 0%	23 2%	14 1%	43 3%	147 11%	24 2%	246 19%	58 5%	222 17%	123 10%	76 6%	215 17%	83 6%
<b>East Jersey Camp</b>	75 100%	4 5%	5 7%	8 11%	6 8%	2 3%	11 15%	18 24%	2 3%	14 19%	2 3%	0 0%	3 4%	0 0%	0 0%	0 0%
<b>East Jersey Total</b>	1,359 100%	6 0%	8 1%	13 1%	29 2%	16 1%	54 4%	165 12%	26 2%	260 19%	60 4%	222 16%	126 9%	76 6%	215 16%	83 6%

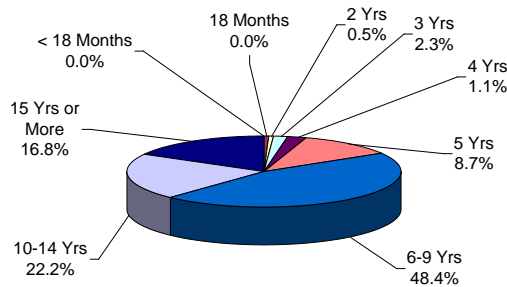
### Prison Complex Offenders By Mandatory Minimum Term

Institution	Total	< 18 Months	18 Months	2 Years	3 Years	4 Years	5 Years	6-9 Years	10 Years	11-14 Years	15 Years	16-19 Years	20-24 Years	25-29 Years	30 Years	30+ Years
Midstate	302 100%	16 5%	17 6%	25 8%	82 27%	31 10%	46 15%	63 21%	6 2%	9 3%	4 1%	1 0%	2 1%	0 0%	0 0%	0 0%
NJ State Prison Ad Seg Female	15 100%	0 0%	0 0%	0 0%	4 0%	0 0%	2 0%	5 0%	0 0%	2 0%	0 0%	1 0%	1 0%	0 0%	0 0%	0 0%
NJ State Prison Main	1,724 100%	18 1%	7 0%	17 1%	42 2%	15 1%	41 2%	93 5%	12 1%	68 4%	24 1%	79 5%	98 6%	174 10%	330 19%	706 41%
NJ State Prison Total	1,739 100%	18 1%	7 0%	17 1%	46 3%	15 1%	43 2%	98 6%	12 1%	70 4%	24 1%	80 5%	99 6%	174 10%	330 19%	706 41%
Northern Main	1,512 100%	44 3%	23 2%	58 4%	188 12%	65 4%	141 9%	357 24%	29 2%	228 15%	32 2%	135 9%	61 4%	36 2%	94 6%	21 1%
Northern Ad Seg Male	409 100%	15 4%	9 2%	24 6%	73 18%	31 8%	43 11%	93 23%	14 3%	51 12%	9 2%	18 4%	12 3%	5 1%	8 2%	4 1%
Northern Total	1,921 100%	59 3%	32 2%	82 4%	261 14%	96 5%	184 10%	450 23%	43 2%	279 15%	41 2%	153 8%	73 4%	41 2%	102 5%	25 1%
Southern	1,439 100%	78 5%	73 5%	147 10%	449 31%	145 10%	208 14%	247 17%	7 0%	62 4%	7 0%	9 1%	2 0%	2 0%	3 0%	0 0%
South Woods	2,622 100%	43 2%	42 2%	76 3%	285 11%	142 5%	253 10%	678 26%	53 2%	393 15%	71 3%	253 10%	108 4%	54 2%	130 5%	41 2%
<b>Subtotal Male Offenders in Other Facilities</b>	<b>11,199 100%</b>	<b>337 3%</b>	<b>260 2%</b>	<b>504 5%</b>	<b>1,549 14%</b>	<b>567 5%</b>	<b>1,039 9%</b>	<b>2,068 18%</b>	<b>176 2%</b>	<b>1,232 11%</b>	<b>242 2%</b>	<b>779 7%</b>	<b>434 4%</b>	<b>354 3%</b>	<b>802 7%</b>	<b>856 8%</b>

## Prison Complex Offenders By Mandatory Minimum Term

Institution	Total	< 18 Months	18 Months	2 Years	3 Years	4 Years	5 Years	6-9 Years	10 Years	11-14 Years	15 Years	16-19 Years	20-24 Years	25-29 Years	30 Years	30+ Years
ADTC	554 100%	0 0%	0 0%	3 1%	13 2%	6 1%	48 9%	268 48%	23 4%	100 18%	21 4%	34 6%	14 3%	14 3%	5 1%	5 1%
<b>Subtotal</b>	<b>11,753</b> <b>100%</b>	<b>337</b> <b>3%</b>	<b>260</b> <b>2%</b>	<b>507</b> <b>4%</b>	<b>1,562</b> <b>13%</b>	<b>573</b> <b>5%</b>	<b>1,087</b> <b>9%</b>	<b>2,336</b> <b>20%</b>	<b>199</b> <b>2%</b>	<b>1,332</b> <b>11%</b>	<b>263</b> <b>2%</b>	<b>813</b> <b>7%</b>	<b>448</b> <b>4%</b>	<b>368</b> <b>3%</b>	<b>807</b> <b>7%</b>	<b>861</b> <b>7%</b>
Mahan - Female Prison	446 100%	22 5%	4 1%	16 4%	59 13%	20 4%	52 12%	90 20%	5 1%	55 12%	11 2%	41 9%	15 3%	4 1%	35 8%	17 4%
<b>Total Prison Complex</b>	<b>12,199</b> <b>100%</b>	<b>359</b> <b>3%</b>	<b>264</b> <b>2%</b>	<b>523</b> <b>4%</b>	<b>1,621</b> <b>13%</b>	<b>593</b> <b>5%</b>	<b>1,139</b> <b>9%</b>	<b>2,426</b> <b>20%</b>	<b>204</b> <b>2%</b>	<b>1,387</b> <b>11%</b>	<b>274</b> <b>2%</b>	<b>854</b> <b>7%</b>	<b>463</b> <b>4%</b>	<b>372</b> <b>3%</b>	<b>842</b> <b>7%</b>	<b>878</b> <b>7%</b>

### ADTC

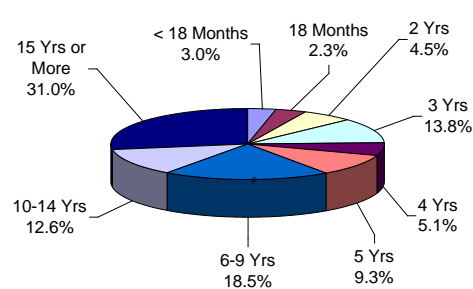


The median mandatory minimum term at ADTC is 8 years 4 months.

Seventy-eight percent (78%) of the ADTC population have mandatory minimum sentences (554 of 713).

Thirty-nine percent (39%) have mandatory minimum terms of 10 years or longer.

### MALE OFFENDERS IN OTHER FACILITIES

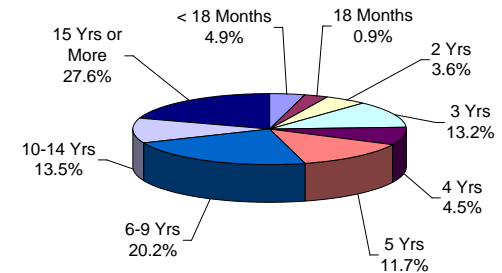


Of the 15,407 Male Offenders in Other Facilities, 73% (11,199) have mandatory minimum terms.

The median mandatory minimum term for Male Offenders in Other Facilities is 6.7 years (ADTC excluded).

Eighty-nine percent (89%) of New Jersey State Prison inmates have mandatory minimum terms and 82% percent of those have minimum terms of 15 years or more.

### FEMALE OFFENDERS



The median mandatory minimum term at Edna Mahan is 6.7 years.

At Edna Mahan, 59.7% of the females housed have minimum terms (446 of 747).

Thirty-nine percent (39%) of the females with mandatory minimum terms have terms of 5 years or less.

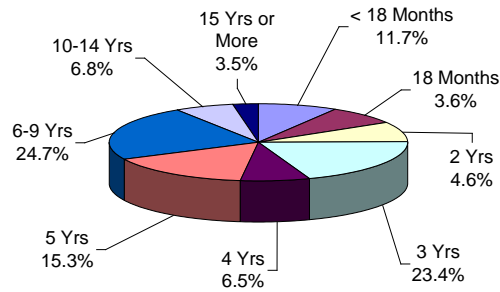
### Youth Complex Offenders By Mandatory Minimum Term

Institution	Total	< 18 Months	18 Months	2 Years	3 Years	4 Years	5 Years	6-9 Years	10 Years	11-14 Years	15 Years	16-19 Years	20-24 Years	25-29 Years	30 Years	30+ Years
Garden State	1,366 100%	104 8%	37 3%	59 4%	281 21%	93 7%	220 16%	374 27%	12 1%	106 8%	13 1%	48 4%	10 1%	4 0%	4 0%	1 0%
Mountainview	711 100%	156 22%	43 6%	43 6%	205 29%	51 7%	103 14%	107 15%	0 0%	2 0%	0 0%	1 0%	0 0%	0 0%	0 0%	0 0%
Wagner Main	465 100%	39 8%	12 3%	14 3%	97 21%	24 5%	67 14%	147 32%	4 1%	48 10%	3 1%	7 2%	3 1%	0 0%	0 0%	0 0%
Wagner Ad Seg	212 100%	20 9%	4 2%	7 3%	62 29%	12 6%	35 17%	55 26%	2 1%	10 5%	1 0%	4 2%	0 0%	0 0%	0 0%	0 0%
Wagner Minimum Units	102 100%	14 14%	8 8%	7 7%	23 23%	5 5%	13 13%	22 22%	2 2%	7 7%	1 1%	0 0%	0 0%	0 0%	0 0%	0 0%
Wagner Total	779 100%	73 9%	24 3%	28 4%	182 23%	41 5%	115 15%	224 29%	8 1%	65 8%	5 1%	11 1%	3 0%	0 0%	0 0%	0 0%
<b>Total Youth Complex</b>	<b>2,856 100%</b>	<b>333 12%</b>	<b>104 4%</b>	<b>130 5%</b>	<b>668 23%</b>	<b>185 6%</b>	<b>438 15%</b>	<b>705 25%</b>	<b>20 1%</b>	<b>173 6%</b>	<b>18 1%</b>	<b>60 2%</b>	<b>13 0%</b>	<b>4 0%</b>	<b>4 0%</b>	<b>1 0%</b>

## Offenders In Halfway Houses, County Jails, and St. Francis By Mandatory Minimum Term

Institution	Total	< 18 Months	18 Months	2 Years	3 Years	4 Years	5 Years	6-9 Years	10 Years	11-14 Years	15 Years	16-19 Years	20-24 Years	25-29 Years	30 Years	30+ Years
Central Medical Unit	8	1	0	1	2	0	1	2	0	0	0	0	0	0	1	0
	100%	13%	0%	13%	25%	0%	13%	25%	0%	0%	0%	0%	0%	0%	13%	0%
County Jail	12	4	0	1	2	2	1	1	0	1	0	0	0	0	0	0
	100%	33%	0%	8%	17%	17%	8%	8%	0%	8%	0%	0%	0%	0%	0%	0%
Halfway House	2,150	193	108	251	793	239	245	224	11	56	16	6	3	1	4	0
	100%	9%	5%	12%	37%	11%	11%	10%	1%	3%	1%	0%	0%	0%	0%	0%
<b>Total Halfway Houses, County Jails, St. Francis</b>	<b>2,170</b>	<b>198</b>	<b>108</b>	<b>253</b>	<b>797</b>	<b>241</b>	<b>247</b>	<b>227</b>	<b>11</b>	<b>57</b>	<b>16</b>	<b>6</b>	<b>3</b>	<b>1</b>	<b>5</b>	<b>0</b>
	100%	9%	5%	12%	37%	11%	11%	10%	1%	3%	1%	0%	0%	0%	0%	0%

### YOUTH COMPLEX

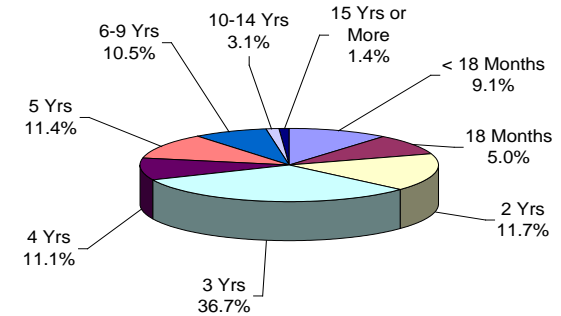


The median mandatory minimum term for youth complex offenders is 4 years.

Among youth complex offenders, 73% have mandatory minimum terms (2,856 of 3,893).

Of these, 65% have mandatory minimum terms of 5 years or less.

### HALFWAY HOUSES COUNTY JAILS, ST. FRANCIS



The median mandatory minimum term for inmates in Halfway Houses, County Jails, and St. Francis is 3 years.

Seventy-one percent (71%) of the offenders in Halfway Houses, County Jails, and St. Francis have mandatory minimum terms (2,170 of 3,050).

Of these, 85% have mandatory minimum terms of 5 years or less.

***AGE GROUP***

**OFFENDERS IN NEW JERSEY CORRECTIONAL INSTITUTIONS  
ON JANUARY 3, 2012, BY AGE**

The age of the offender is the chronological age as of January 3, 2012.

**OFFENDERS IN CORRECTIONAL INSTITUTIONS BY AGE**

Age	Total		Male Offenders in Other Facilities		Youth Complex		ADTC		Edna Mahan		Halfway Houses, County Jails, St. Francis	
	#	%	#	%	#	%	#	%	#	%	#	%
TOTAL OFFENDERS	23,810	100%	15,407	100%	3,893	100%	713	100%	747	100%	3,050	100%
< 17 Years	1	0%	0	0%	0	0%	0	0%	1	0%	0	0%
17 Years	6	0%	0	0%	6	0%	0	0%	0	0%	0	0%
18-20 Years	630	3%	44	0%	540	14%	7	1%	9	1%	30	1%
21-22 Years	1,443	6%	262	2%	1,014	26%	9	1%	29	4%	129	4%
23-24 Years	1,767	7%	505	3%	1,010	26%	25	4%	54	7%	173	6%
25-27 Years	2,684	11%	1,316	9%	969	25%	32	4%	77	10%	290	10%
28-30 Years	2,604	11%	1,814	12%	322	8%	32	4%	87	12%	349	11%
31-33 Years	2,614	11%	2,082	14%	27	1%	35	5%	74	10%	396	13%
34-36 Years	2,048	9%	1,614	10%	2	0%	50	7%	66	9%	316	10%
37-39 Years	1,877	8%	1,488	10%	0	0%	62	9%	66	9%	261	9%
40-44 Years	2,801	12%	2,187	14%	1	0%	93	13%	87	12%	433	14%
45-49 Years	2,303	10%	1,792	12%	1	0%	121	17%	89	12%	300	10%
50-54 Years	1,485	6%	1,182	8%	0	0%	79	11%	63	8%	161	5%
55-59 Years	734	3%	587	4%	1	0%	64	9%	23	3%	59	2%
60-64 Years	400	2%	315	2%	0	0%	53	7%	10	1%	22	1%
65+ Years	295	1%	219	1%	0	0%	51	7%	12	2%	13	0%
Not Coded	118	0%	0	0%	0	0%	0	0%	0	0%	118	4%

- The median age for adult inmates is 34 years.
- Three percent (3%) of all adult offenders are 20 years of age or younger.
- Thirty-five percent (35%) of all adult offenders are between the ages of 21-30.
- Twenty-eight percent (28%) of all adult offenders are 31 to 39 years of age.
- Thirty-four percent (34%) of all adult offenders are 40 years of age and older.

### Prison Complex Offenders By Age

Institution	Total	< 17 Years	17 Years	18-20 Years	21-22 Years	23-24 Years	25-27 Years	28-30 Years	31-33 Years	34-36 Years	37-39 Years	40-44 Years	45-49 Years	50-54 Years	55-59 Years	60-64 Years	65+ Years	Unspec
<b>Bayside</b>	1,177	0	0	1	22	38	127	164	206	139	121	148	100	65	23	16	7	0
<b>Main</b>	100%	0%	0%	0%	2%	3%	11%	14%	18%	12%	10%	13%	8%	6%	2%	1%	1%	0%
<b>Bayside</b>	693	0	0	2	12	22	47	56	77	82	75	123	103	61	19	13	1	0
<b>Farm</b>	100%	0%	0%	0%	2%	3%	7%	8%	11%	12%	11%	18%	15%	9%	3%	2%	0%	0%
<b>Bayside</b>	317	0	0	1	6	15	34	42	44	28	35	42	42	20	7	1	0	0
<b>Ancora</b>	100%	0%	0%	0%	2%	5%	11%	13%	14%	9%	11%	13%	13%	6%	2%	0%	0%	0%
<b>Bayside Total</b>	2,187	0	0	4	40	75	208	262	327	249	231	313	245	146	49	30	8	0
	100%	0%	0%	0%	2%	3%	10%	12%	15%	11%	11%	14%	11%	7%	2%	1%	0%	0%
<b>CRAF</b>	278	0	0	0	1	6	24	40	38	28	23	37	29	31	12	6	3	0
<b>Jones Farm</b>	100%	0%	0%	0%	0%	2%	9%	14%	14%	10%	8%	13%	10%	11%	4%	2%	1%	0%
<b>CRAF</b>	639	0	0	10	14	25	70	87	103	66	56	82	61	49	10	2	4	0
<b>Reception</b>	100%	0%	0%	2%	2%	4%	11%	14%	16%	10%	9%	13%	10%	8%	2%	0%	1%	0%
<b>CRAF Total</b>	917	0	0	10	15	31	94	127	141	94	79	119	90	80	22	8	7	0
	100%	0%	0%	1%	2%	3%	10%	14%	15%	10%	9%	13%	10%	9%	2%	1%	1%	0%
<b>East Jersey</b>	1,364	0	0	0	10	25	70	128	148	154	135	196	175	151	88	41	43	0
<b>Main</b>	100%	0%	0%	0%	1%	2%	5%	9%	11%	11%	10%	14%	13%	11%	6%	3%	3%	0%
<b>East Jersey</b>	113	0	0	0	0	0	5	12	26	13	10	16	15	12	2	2	0	0
<b>Camp</b>	100%	0%	0%	0%	0%	0%	4%	11%	23%	12%	9%	14%	13%	11%	2%	2%	0%	0%
<b>East Jersey</b>	1,477	0	0	0	10	25	75	140	174	167	145	212	190	163	90	43	43	0
<b>Total</b>	100%	0%	0%	0%	1%	2%	5%	9%	12%	11%	10%	14%	13%	11%	6%	3%	3%	0%

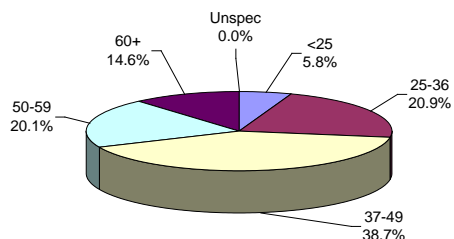
### Prison Complex Offenders By Age

Institution	Total	< 17 Years	17 Years	18-20 Years	21-22 Years	23-24 Years	25-27 Years	28-30 Years	31-33 Years	34-36 Years	37-39 Years	40-44 Years	45-49 Years	50-54 Years	55-59 Years	60-64 Years	65+ Years	Unspec
Midstate	690	0	0	0	3	12	48	62	86	70	62	131	99	67	29	12	9	0
	100%	0%	0%	0%	0%	2%	7%	9%	12%	10%	9%	19%	14%	10%	4%	2%	1%	0%
NJ State Prison Ad Seg Female	27	0	0	0	3	4	6	3	3	2	1	2	0	3	0	0	0	0
	100%	0%	0%	0%	11%	15%	22%	11%	11%	7%	4%	7%	0%	11%	0%	0%	0%	0%
NJ State Prison Main	1,922	0	0	3	50	77	155	170	184	189	194	289	245	159	91	62	54	0
	100%	0%	0%	0%	3%	4%	8%	9%	9%	10%	10%	15%	13%	8%	5%	3%	3%	0%
NJ State Prison Total	1,949	0	0	3	53	81	161	173	187	191	195	291	245	162	91	62	54	0
	100%	0%	0%	0%	3%	4%	8%	9%	10%	10%	10%	15%	13%	8%	5%	3%	3%	0%
Northern Main	1,918	0	0	14	35	58	167	209	296	195	184	279	210	135	76	37	23	0
	100%	0%	0%	1%	2%	3%	9%	11%	15%	10%	10%	15%	11%	7%	4%	2%	1%	0%
Northern Ad Seg Male	556	0	0	2	25	48	84	85	76	65	43	60	34	18	12	4	0	0
	100%	0%	0%	0%	4%	9%	15%	15%	14%	12%	8%	11%	6%	3%	2%	1%	0%	0%
Northern Total	2,474	0	0	16	60	106	251	294	372	260	227	339	244	153	88	41	23	0
	100%	0%	0%	1%	2%	4%	10%	12%	15%	11%	9%	14%	10%	6%	4%	2%	1%	0%
Southern	2,337	0	0	1	18	61	199	330	364	280	247	351	272	137	44	28	5	0
	100%	0%	0%	0%	1%	3%	9%	14%	16%	12%	11%	15%	12%	6%	2%	1%	0%	0%
South Woods	3,376	0	0	10	63	114	280	426	431	303	302	431	407	274	174	91	70	0
	100%	0%	0%	0%	2%	3%	8%	13%	13%	9%	9%	13%	12%	8%	5%	3%	2%	0%
<b>Subtotal Male Offenders in Other Facilities</b>	<b>15,407</b>	<b>0</b>	<b>0</b>	<b>44</b>	<b>262</b>	<b>505</b>	<b>1,316</b>	<b>1,814</b>	<b>2,082</b>	<b>1,614</b>	<b>1,488</b>	<b>2,187</b>	<b>1,792</b>	<b>1,182</b>	<b>587</b>	<b>315</b>	<b>219</b>	<b>0</b>
	<b>100%</b>	<b>0%</b>	<b>0%</b>	<b>0%</b>	<b>2%</b>	<b>3%</b>	<b>9%</b>	<b>12%</b>	<b>14%</b>	<b>10%</b>	<b>10%</b>	<b>14%</b>	<b>12%</b>	<b>8%</b>	<b>4%</b>	<b>2%</b>	<b>1%</b>	<b>0%</b>

## Prison Complex Offenders By Age

Institution	Total	< 17 Years	17 Years	18-20 Years	21-22 Years	23-24 Years	25-27 Years	28-30 Years	31-33 Years	34-36 Years	37-39 Years	40-44 Years	45-49 Years	50-54 Years	55-59 Years	60-64 Years	65+ Years	Unspec
ADTC	713 100%	0 0%	0 0%	7 1%	9 1%	25 4%	32 4%	32 4%	35 5%	50 7%	62 9%	93 13%	121 17%	79 11%	64 9%	53 7%	51 7%	0 0%
<b>Subtotal</b>	<b>16,120</b> <b>100%</b>	<b>0</b> <b>0%</b>	<b>0</b> <b>0%</b>	<b>51</b> <b>0%</b>	<b>271</b> <b>2%</b>	<b>530</b> <b>3%</b>	<b>1,348</b> <b>8%</b>	<b>1,846</b> <b>11%</b>	<b>2,117</b> <b>13%</b>	<b>1,664</b> <b>10%</b>	<b>1,550</b> <b>10%</b>	<b>2,280</b> <b>14%</b>	<b>1,913</b> <b>12%</b>	<b>1,261</b> <b>8%</b>	<b>651</b> <b>4%</b>	<b>368</b> <b>2%</b>	<b>270</b> <b>2%</b>	<b>0</b> <b>0%</b>
Mahan - Female Prison	747 100%	1 0%	0 0%	9 1%	29 4%	54 7%	77 10%	87 12%	74 10%	66 9%	66 9%	87 12%	89 12%	63 8%	23 3%	10 1%	12 2%	0 0%
<b>Total Prison Complex</b>	<b>16,867</b> <b>100%</b>	<b>1</b> <b>0%</b>	<b>0</b> <b>0%</b>	<b>60</b> <b>0%</b>	<b>300</b> <b>2%</b>	<b>584</b> <b>3%</b>	<b>1,425</b> <b>8%</b>	<b>1,933</b> <b>11%</b>	<b>2,191</b> <b>13%</b>	<b>1,730</b> <b>10%</b>	<b>1,616</b> <b>10%</b>	<b>2,367</b> <b>14%</b>	<b>2,002</b> <b>12%</b>	<b>1,324</b> <b>8%</b>	<b>674</b> <b>4%</b>	<b>378</b> <b>2%</b>	<b>282</b> <b>2%</b>	<b>0</b> <b>0%</b>

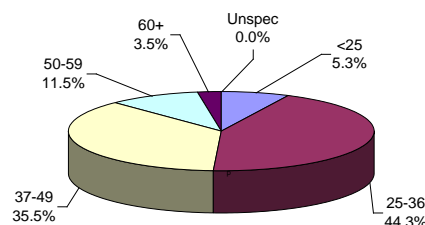
### ADTC



The median age at ADTC is 45 years.

Thirty-five percent (35%) of the ADTC offenders are 50 years of age or older. This may be compared with 15% of Male Offenders in Other Facilities and 14.4% of female (Edna Mahan) offenders.

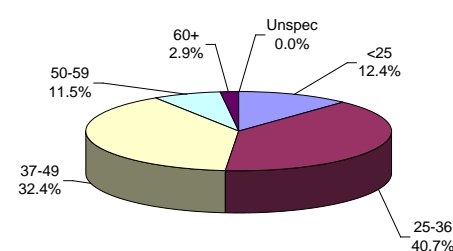
### MALE OFFENDERS IN OTHER FACILITIES



The median age for Male Offenders in Other Facilities is 37 years.

Forty-four percent (44%) of Male Offenders in Other Facilities are age 25 to 36 (ADTC excluded).

### FEMALE OFFENDERS



The median age for female inmates (Edna Mahan) is 36 years.

Forty-one percent (41%) of the women at Edna Mahan are age 25 to 36.

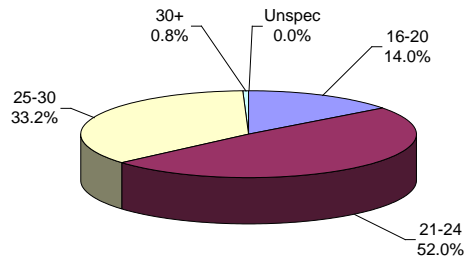
### Youth Complex Offenders By Age

Institution	Total	< 17 Years	17 Years	18-20 Years	21-22 Years	23-24 Years	25-27 Years	28-30 Years	31-33 Years	34-36 Years	37-39 Years	40-44 Years	45-49 Years	50-54 Years	55-59 Years	60-64 Years	65+ Years	Unspec
<b>Garden State</b>	1,801	0	3	226	434	457	486	176	15	2	0	0	1	0	1	0	0	0
	100%	0%	0%	13%	24%	25%	27%	10%	1%	0%	0%	0%	0%	0%	0%	0%	0%	0%
<b>Mountainview</b>	1,054	0	3	184	322	268	215	58	3	0	0	1	0	0	0	0	0	0
	100%	0%	0%	17%	31%	25%	20%	6%	0%	0%	0%	0%	0%	0%	0%	0%	0%	0%
<b>Wagner Main</b>	609	0	0	59	151	165	164	64	6	0	0	0	0	0	0	0	0	0
	100%	0%	0%	10%	25%	27%	27%	11%	1%	0%	0%	0%	0%	0%	0%	0%	0%	0%
<b>Wagner Ad Seg</b>	290	0	0	58	85	83	56	7	1	0	0	0	0	0	0	0	0	0
	100%	0%	0%	20%	29%	29%	19%	2%	0%	0%	0%	0%	0%	0%	0%	0%	0%	0%
<b>Wagner Minimum Units</b>	139	0	0	13	22	37	48	17	2	0	0	0	0	0	0	0	0	0
	100%	0%	0%	9%	16%	27%	35%	12%	1%	0%	0%	0%	0%	0%	0%	0%	0%	0%
<b>Wagner Total</b>	1,038	0	0	130	258	285	268	88	9	0	0	0	0	0	0	0	0	0
	100%	0%	0%	13%	25%	27%	26%	8%	1%	0%	0%	0%	0%	0%	0%	0%	0%	0%
<b>Total Youth Complex</b>	<b>3,893</b>	<b>0</b>	<b>6</b>	<b>540</b>	<b>1,014</b>	<b>1,010</b>	<b>969</b>	<b>322</b>	<b>27</b>	<b>2</b>	<b>0</b>	<b>1</b>	<b>1</b>	<b>0</b>	<b>1</b>	<b>0</b>	<b>0</b>	<b>0</b>
	<b>100%</b>	<b>0%</b>	<b>0%</b>	<b>14%</b>	<b>26%</b>	<b>26%</b>	<b>25%</b>	<b>8%</b>	<b>1%</b>	<b>0%</b>	<b>0%</b>	<b>0%</b>	<b>0%</b>	<b>0%</b>	<b>0%</b>	<b>0%</b>	<b>0%</b>	<b>0%</b>

## Offenders In Halfway Houses, County Jails, and St. Francis By Age

Institution	Total	< 17 Years	17 Years	18-20 Years	21-22 Years	23-24 Years	25-27 Years	28-30 Years	31-33 Years	34-36 Years	37-39 Years	40-44 Years	45-49 Years	50-54 Years	55-59 Years	60-64 Years	65+ Years	Unspec
Central Medical Unit	8	0	0	0	0	0	0	2	0	1	0	2	0	2	0	0	1	0
	100%	0%	0%	0%	0%	0%	0%	25%	0%	13%	0%	25%	0%	25%	0%	0%	13%	0%
County Jail	178	0	0	2	6	3	18	6	6	4	6	5	2	1	1	0	0	118
	100%	0%	0%	1%	3%	2%	10%	3%	3%	2%	3%	3%	1%	1%	1%	0%	0%	66%
Halfway House	2,864	0	0	28	123	170	272	341	390	311	255	426	298	158	58	22	12	0
	100%	0%	0%	1%	4%	6%	9%	12%	14%	11%	9%	15%	10%	6%	2%	1%	0%	0%
<b>Total Halfway Houses, County Jails, St. Francis</b>	<b>3,050</b>	<b>0</b>	<b>0</b>	<b>30</b>	<b>129</b>	<b>173</b>	<b>290</b>	<b>349</b>	<b>396</b>	<b>316</b>	<b>261</b>	<b>433</b>	<b>300</b>	<b>161</b>	<b>59</b>	<b>22</b>	<b>13</b>	<b>118</b>
	100%	0%	0%	1%	4%	6%	10%	11%	13%	10%	9%	14%	10%	5%	2%	1%	0%	4%

### YOUTH COMPLEX

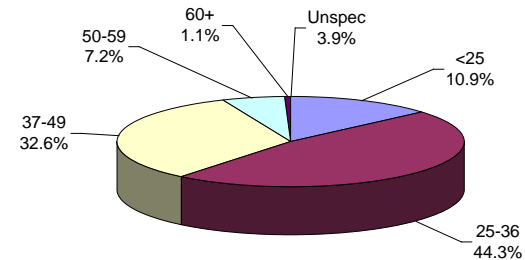


The median age for the youth complex is 23 years.

Eighty-five percent (85%) of all youth complex inmates are between the ages of 21 and 30.

Sixty-six percent (66%) are less than 25 years of age.

### HALFWAY HOUSES, COUNTY JAILS, ST. FRANCIS



The median age for offenders in Halfway Houses, County Jails, and St. Francis is 34 years.

The median age for offenders housed in county jails is 28 years; while offenders in halfway houses have a median age of 34 years.

***RACE/ETHNIC IDENTIFICATION***

**OFFENDERS IN NEW JERSEY CORRECTIONAL INSTITUTIONS  
ON JANUARY 3, 2012, BY RACE/ETHNIC IDENTIFICATION**

In these tabulations, a Hispanic is a person of Mexican, Puerto Rican, Cuban, South American or other Spanish culture or origin (Spain or Portugal) regardless of complexion.

**OFFENDERS IN CORRECTIONAL INSTITUTIONS BY RACE/ETHNIC IDENTIFICATION**

Ethnic Identification	Total		Male Offenders in Other Facilities		Youth Complex		ADTC		Edna Mahan		Halfway Houses, County Jails, St. Francis	
	#	%	#	%	#	%	#	%	#	%	#	%
TOTAL OFFENDERS	23,810	100%	15,407	100%	3,893	100%	713	100%	747	100%	3,050	100%
Black	14,469	61%	9,489	62%	2,516	65%	161	23%	356	48%	1,947	64%
White	5,300	22%	3,323	22%	768	20%	363	51%	280	37%	566	19%
Hispanic	3,785	16%	2,508	16%	589	15%	179	25%	101	14%	408	13%
Asian	131	1%	81	1%	20	1%	10	1%	10	1%	10	0%
American Indian	7	0%	6	0%	0	0%	0	0%	0	0%	1	0%
Other or Unspecified	118	0%	0	0%	0	0%	0	0%	0	0%	118	4%

- Sixty-one (61%) percent of all state correctional institution offenders were Black, 22% were White and 16% were Hispanic.

### Prison Complex Offenders By Race/Ethnic Identification

Institution	Total	Black	White	Hispanic	Asian	American Indian	Other or Unspecified
<b>Bayside Main</b>	1,177 100%	770 65%	229 19%	172 15%	4 0%	2 0%	0 0%
<b>Bayside Farm</b>	693 100%	421 61%	170 25%	96 14%	5 1%	1 0%	0 0%
<b>Bayside Ancora</b>	317 100%	222 70%	62 20%	33 10%	0 0%	0 0%	0 0%
<b>Bayside Total</b>	2,187 100%	1,413 65%	461 21%	301 14%	9 0%	3 0%	0 0%
<b>CRAF Jones Farm</b>	278 100%	118 42%	115 41%	45 16%	0 0%	0 0%	0 0%
<b>CRAF Reception</b>	639 100%	364 57%	169 26%	102 16%	4 1%	0 0%	0 0%
<b>CRAF Total</b>	917 100%	482 53%	284 31%	147 16%	4 0%	0 0%	0 0%
<b>East Jersey Main</b>	1,364 100%	895 66%	220 16%	247 18%	2 0%	0 0%	0 0%
<b>East Jersey Camp</b>	113 100%	68 60%	24 21%	20 18%	1 1%	0 0%	0 0%
<b>East Jersey Total</b>	1,477 100%	963 65%	244 17%	267 18%	3 0%	0 0%	0 0%

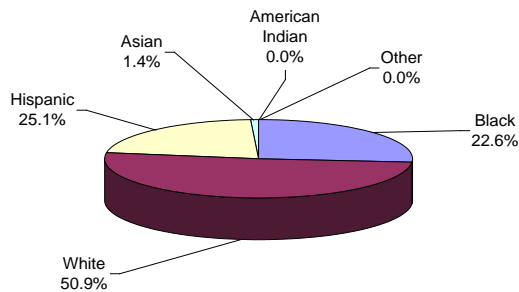
### Prison Complex Offenders By Race/Ethnic Identification

Institution	Total	Black	White	Hispanic	Asian	American Indian	Other or Unspecified
Midstate	690 100%	322 47%	237 34%	121 18%	10 1%	0 0%	0 0%
NJ State Prison Ad Seg Female	27 100%	21 1%	5 0%	1 0%	0 0%	0 0%	0 0%
NJ State Prison Main	1,922 100%	1,262 65%	360 18%	283 15%	16 1%	1 0%	0 0%
NJ State Prison Total	1,949 100%	1,283 66%	365 19%	284 15%	16 1%	1 0%	0 0%
Northern Main	1,918 100%	1,221 64%	292 15%	396 21%	9 0%	0 0%	0 0%
Northern Ad Seg Male	556 100%	391 70%	78 14%	87 16%	0 0%	0 0%	0 0%
Northern Total	2,474 100%	1,612 65%	370 15%	483 20%	9 0%	0 0%	0 0%
Southern	2,337 100%	1,467 63%	545 23%	315 13%	9 0%	1 0%	0 0%
South Woods	3,376 100%	1,947 58%	817 24%	590 17%	21 1%	1 0%	0 0%
<b>Subtotal Male Offenders in Other Facilities</b>	<b>15,407 100%</b>	<b>9,489 62%</b>	<b>3,323 22%</b>	<b>2,508 16%</b>	<b>81 1%</b>	<b>6 0%</b>	<b>0 0%</b>

## Prison Complex Offenders By Race/Ethnic Identification

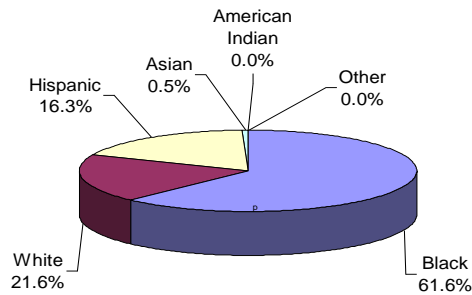
Institution	Total	Black	White	Hispanic	Asian	American Indian	Other or Unspecified
ADTC	713 100%	161 23%	363 51%	179 25%	10 1%	0 0%	0 0%
<b>Subtotal</b>	<b>16,120</b> <b>100%</b>	<b>9,650</b> <b>60%</b>	<b>3,686</b> <b>23%</b>	<b>2,687</b> <b>17%</b>	<b>91</b> <b>1%</b>	<b>6</b> <b>0%</b>	<b>0</b> <b>0%</b>
Mahan - Female Prison	747 100%	356 48%	280 37%	101 14%	10 1%	0 0%	0 0%
<b>Total Prison Complex</b>	<b>16,867</b> <b>100%</b>	<b>10,006</b> <b>59%</b>	<b>3,966</b> <b>24%</b>	<b>2,788</b> <b>17%</b>	<b>101</b> <b>1%</b>	<b>6</b> <b>0%</b>	<b>0</b> <b>0%</b>

### ADTC



White offenders comprised 51% of the offenders at ADTC.

### MALE OFFENDERS IN OTHER FACILITIES

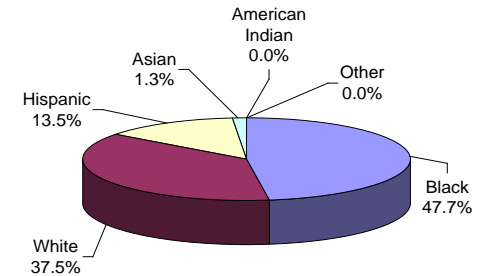


The largest proportion of Black male offenders in a major facility was at New Jersey State Prison (66%).

The largest proportion of White male offenders at a major facility was at Midstate Correctional Facility (34%), ADTC excluded.

The largest proportion of Hispanic male offenders at a major facility was at Northern (20%), (ADTC excluded).

### FEMALE OFFENDERS



Black offenders comprised 47.7% of the population at Edna Mahan. This may be compared with Black offenders comprising 61.6% of the Male Offenders in Other Facilities.

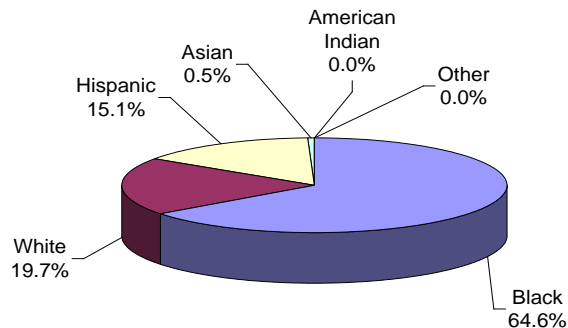
### Youth Complex Offenders By Race/Ethnic Identification

Institution	Total	Black	White	Hispanic	Asian	American Indian	Other or Unspecified
<b>Garden State</b>	1,801 100%	1,171 65%	347 19%	273 15%	10 1%	0 0%	0 0%
<b>Mountainview</b>	1,054 100%	639 61%	274 26%	134 13%	7 1%	0 0%	0 0%
<b>Wagner Main</b>	609 100%	412 68%	86 14%	109 18%	2 0%	0 0%	0 0%
<b>Wagner Ad Seg</b>	290 100%	194 67%	44 15%	52 18%	0 0%	0 0%	0 0%
<b>Wagner Minimum Units</b>	139 100%	100 72%	17 12%	21 15%	1 1%	0 0%	0 0%
<b>Wagner Total</b>	1,038 100%	706 68%	147 14%	182 18%	3 0%	0 0%	0 0%
<b>Total Youth Complex</b>	<b>3,893</b> <b>100%</b>	<b>2,516</b> <b>65%</b>	<b>768</b> <b>20%</b>	<b>589</b> <b>15%</b>	<b>20</b> <b>1%</b>	<b>0</b> <b>0%</b>	<b>0</b> <b>0%</b>

## Offenders In Halfway Houses, County Jails, and St. Francis By Race/Ethnic Identification

Institution	Total	Black	White	Hispanic	Asian	American Indian	Other or Unspecified
Central Medical Unit	8	6	1	1	0	0	0
	100%	75%	13%	13%	0%	0%	0%
County Jail	178	35	16	8	1	0	118
	100%	20%	9%	4%	1%	0%	66%
Halfway House	2,864	1,906	549	399	9	1	0
	100%	67%	19%	14%	0%	0%	0%
<b>Total Halfway Houses, County Jails, St. Francis</b>	<b>3,050</b>	<b>1,947</b>	<b>566</b>	<b>408</b>	<b>10</b>	<b>1</b>	<b>118</b>
	100%	64%	19%	13%	0%	0%	4%

### YOUTH COMPLEX

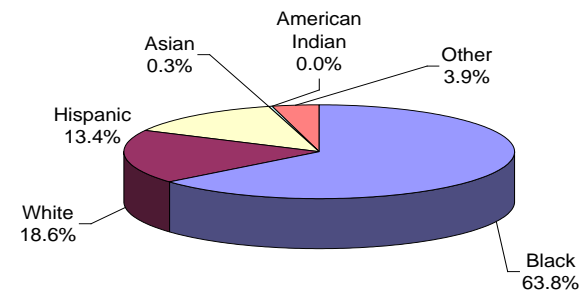


The largest proportion of Black offenders in the youth complex facilities was housed at Wagner (68%).

The largest proportion of White offenders in the youth complex facilities was housed at Mountainview (26%).

The largest proportion of Hispanic offenders in the youth complex facilities was housed at Wagner (18%).

### HALFWAY HOUSES, COUNTY JAILS, ST. FRANCIS



Race and ethnicity for inmates assigned to Halfway Houses, County Jails, and St. Francis was roughly equivalent to that for the total adult inmate population.

***COUNTY OF COMMITMENT***

**OFFENDERS IN NEW JERSEY CORRECTIONAL INSTITUTIONS  
ON JANUARY 3, 2012, BY COUNTY OF COMMITMENT**

**OFFENDERS IN NEW JERSEY CORRECTIONAL INSTITUTIONS BY COUNTY OF COMMITMENT**

County of Commitment	Total		Male Offenders in Other Facilities		Youth Complex		ADTC		Edna Mahan		Halfway Houses, County Jails, St. Francis	
	#	%	#	%	#	%	#	%	#	%	#	%
TOTAL OFFENDERS	23,810	100%	15,407	100%	3,893	100%	713	100%	747	100%	3,050	100%
Atlantic	1,803	8%	1,226	8%	239	6%	36	5%	56	7%	246	8%
Bergen	937	4%	613	4%	133	3%	49	7%	37	5%	105	3%
Burlington	793	3%	516	3%	137	4%	30	4%	33	4%	77	3%
Camden	2,708	11%	1,690	11%	491	13%	58	8%	80	11%	389	13%
Cape May	436	2%	285	2%	68	2%	16	2%	14	2%	53	2%
Cumberland	640	3%	453	3%	72	2%	24	3%	12	2%	79	3%
Essex	3,467	15%	2,449	16%	536	14%	50	7%	62	8%	370	12%
Gloucester	443	2%	283	2%	69	2%	18	3%	24	3%	49	2%
Hudson	2,055	9%	1,301	8%	368	9%	40	6%	55	7%	291	10%
Hunterdon	124	1%	76	0%	19	0%	6	1%	6	1%	17	1%
Mercer	1,281	5%	821	5%	227	6%	28	4%	48	6%	157	5%
Middlesex	1,503	6%	960	6%	261	7%	67	9%	62	8%	153	5%
Monmouth	1,259	5%	787	5%	220	6%	47	7%	58	8%	147	5%
Morris	400	2%	254	2%	59	2%	25	4%	16	2%	46	2%
Ocean	896	4%	570	4%	130	3%	53	7%	42	6%	101	3%
Passaic	1,878	8%	1,160	8%	341	9%	69	10%	41	5%	267	9%
Salem	249	1%	148	1%	48	1%	13	2%	5	1%	35	1%
Somerset	412	2%	252	2%	85	2%	10	1%	15	2%	50	2%
Sussex	147	1%	82	1%	25	1%	11	2%	12	2%	17	1%
Union	1,979	8%	1,283	8%	327	8%	42	6%	56	7%	271	9%
Warren	174	1%	102	1%	36	1%	17	2%	9	1%	10	0%
Not Coded	226	1%	96	1%	2	0%	4	1%	4	1%	120	4%

- Essex County has the highest percentage of commitments among Male Offenders in Other Facilities (16%); and the youth complex (14%).
- Camden County has the highest percentage of commitments at Edna Mahan (11%).
- Passaic County has the highest percentage of commitments at ADTC (10%).
- Camden County has the highest percentage of commitments (13%) at Other Facilities.
- Two counties, Essex and Camden, combine to comprise roughly a fourth of total DOC commitments.

### Prison Complex Offenders By County Of Commitment

Institution	Total	Atl	Ber	Burl	Cam	Cape May	Cum	Ess	Glou	Hud	Hunt	Mer	Mid	Mon	Mor	Oc	Pas	Sal	Som	Sus	Un	War	Not Coded
<b>Bayside Main</b>	1,177 100%	117 10%	33 3%	40 3%	146 12%	22 2%	36 3%	188 16%	27 2%	110 9%	7 1%	58 5%	53 5%	52 4%	21 2%	44 4%	73 6%	14 1%	17 1%	6 1%	105 9%	8 1%	0 0%
<b>Bayside Farm</b>	693 100%	75 11%	24 3%	27 4%	87 13%	13 2%	20 3%	99 14%	15 2%	61 9%	5 1%	24 3%	27 4%	33 5%	13 2%	24 3%	62 9%	9 1%	15 2%	3 0%	50 7%	5 1%	2 0%
<b>Bayside Ancora</b>	317 100%	37 12%	9 3%	10 3%	58 18%	5 2%	8 3%	37 12%	6 2%	29 9%	1 0%	8 3%	20 6%	12 4%	4 1%	7 2%	30 9%	5 2%	3 1%	0 0%	27 9%	1 0%	0 0%
<b>Bayside Total</b>	2,187 100%	229 10%	66 3%	77 4%	291 13%	40 2%	64 3%	324 15%	48 2%	200 9%	13 1%	90 4%	100 5%	97 4%	38 2%	75 3%	165 8%	28 1%	35 2%	9 0%	182 8%	14 1%	2 0%
<b>CRAF Jones Farm</b>	278 100%	18 6%	10 4%	6 2%	26 9%	8 3%	4 1%	19 7%	9 3%	25 9%	4 1%	10 4%	19 7%	19 7%	10 4%	23 8%	20 7%	4 1%	5 2%	1 0%	34 12%	4 1%	0 0%
<b>CRAF Reception</b>	639 100%	35 5%	34 5%	27 4%	67 10%	16 3%	20 3%	77 12%	11 2%	57 9%	2 0%	34 5%	55 9%	40 6%	12 2%	26 4%	45 7%	7 1%	4 1%	3 0%	61 10%	6 1%	0 0%
<b>CRAF Total</b>	917 100%	53 6%	44 5%	33 4%	93 10%	24 3%	24 3%	96 10%	20 2%	82 9%	6 1%	44 5%	74 8%	59 6%	22 2%	49 5%	65 7%	11 1%	9 1%	4 0%	95 10%	10 1%	0 0%
<b>East Jersey Main</b>	1,364 100%	66 5%	55 4%	44 3%	100 7%	8 1%	20 1%	323 24%	16 1%	112 8%	7 1%	72 5%	82 6%	87 6%	24 2%	33 2%	115 8%	1 0%	28 2%	8 1%	141 10%	6 0%	16 1%
<b>East Jersey Camp</b>	113 100%	4 4%	3 3%	0 0%	5 4%	1 1%	2 2%	20 18%	0 0%	14 12%	1 1%	6 5%	11 10%	11 10%	3 3%	7 6%	10 9%	0 0%	3 3%	0 0%	11 10%	1 1%	0 0%
<b>East Jersey Total</b>	1,477 100%	70 5%	58 4%	44 3%	105 7%	9 1%	22 1%	343 23%	16 1%	126 9%	8 1%	78 5%	93 6%	98 7%	27 2%	40 3%	125 8%	1 0%	31 2%	8 1%	152 10%	7 0%	16 1%

### Prison Complex Offenders By County Of Commitment

Institution	Total	Atl	Ber	Burl	Cam	Cape May	Cum	Ess	Glou	Hud	Hunt	Mer	Mid	Mon	Mor	Oc	Pas	Sal	Som	Sus	Un	War	Not Coded
Midstate	690 100%	38 6%	28 4%	32 5%	62 9%	17 2%	24 3%	68 10%	14 2%	47 7%	7 1%	54 8%	60 9%	47 7%	18 3%	32 5%	57 8%	5 1%	18 3%	3 0%	49 7%	10 1%	0 0%
NJ State Prison Ad Seg Female	27 100%	2 0%	0 0%	1 0%	4 0%	2 0%	2 0%	4 0%	0 0%	3 0%	0 0%	2 0%	2 0%	1 0%	0 0%	0 0%	0 0%	0 0%	2 0%	0 0%	2 0%	0 0%	0 0%
NJ State Prison Main	1,922 100%	127 7%	96 5%	69 4%	185 9%	23 1%	55 3%	378 19%	14 1%	127 7%	2 0%	137 7%	124 6%	94 5%	27 1%	83 4%	123 6%	9 0%	23 1%	10 1%	142 7%	7 0%	67 3%
NJ State Prison Total	1,949 100%	129 7%	96 5%	70 4%	189 10%	25 1%	57 3%	382 20%	14 1%	130 7%	2 0%	139 7%	126 6%	95 5%	27 1%	83 4%	123 6%	9 0%	25 1%	10 1%	144 7%	7 0%	67 3%
Northern Main	1,918 100%	75 4%	110 6%	27 1%	109 6%	14 1%	39 2%	418 22%	11 1%	222 12%	6 0%	86 4%	159 8%	88 5%	31 2%	55 3%	197 10%	5 0%	41 2%	10 1%	201 10%	10 1%	4 0%
Northern Ad Seg Male	556 100%	35 6%	16 3%	14 3%	59 11%	12 2%	18 3%	103 19%	4 1%	64 12%	4 1%	35 6%	31 6%	23 4%	7 1%	17 3%	44 8%	8 1%	8 1%	3 1%	45 8%	6 1%	0 0%
Northern Total	2,474 100%	110 4%	126 5%	41 2%	168 7%	26 1%	57 2%	521 21%	15 1%	286 12%	10 0%	121 5%	190 8%	111 4%	38 2%	72 3%	241 10%	13 1%	49 2%	13 1%	246 10%	16 1%	4 0%
Southern	2,337 100%	246 11%	79 3%	91 4%	319 14%	61 3%	79 3%	268 11%	66 3%	195 8%	14 1%	113 5%	137 6%	113 5%	34 1%	92 4%	169 7%	33 1%	22 1%	8 0%	180 8%	18 1%	0 0%
South Woods	3,376 100%	351 10%	116 3%	128 4%	463 14%	83 2%	126 4%	447 13%	90 3%	235 7%	16 0%	182 5%	180 5%	167 5%	50 1%	127 4%	215 6%	48 1%	63 2%	27 1%	235 7%	20 1%	7 0%
<b>Subtotal Male Offenders in Other Facilities</b>	<b>15,407 100%</b>	<b>1,226 8%</b>	<b>613 4%</b>	<b>516 3%</b>	<b>1,690 11%</b>	<b>285 2%</b>	<b>453 3%</b>	<b>2,449 16%</b>	<b>283 2%</b>	<b>1,301 8%</b>	<b>76 0%</b>	<b>821 5%</b>	<b>960 6%</b>	<b>787 5%</b>	<b>254 2%</b>	<b>570 4%</b>	<b>1,160 8%</b>	<b>148 1%</b>	<b>252 2%</b>	<b>82 1%</b>	<b>1,283 8%</b>	<b>102 1%</b>	<b>96 1%</b>

### Prison Complex Offenders By County Of Commitment

Institution	Total	Atl	Ber	Burl	Cam	Cape May	Cum	Ess	Glou	Hud	Hunt	Mer	Mid	Mon	Mor	Oc	Pas	Sal	Som	Sus	Un	War	Not Coded
ADTC	713 100%	36 5%	49 7%	30 4%	58 8%	16 2%	24 3%	50 7%	18 3%	40 6%	6 1%	28 4%	67 9%	47 7%	25 4%	53 7%	69 10%	13 2%	10 1%	11 2%	42 6%	17 2%	4 1%
<b>Subtotal</b>	<b>16,120 100%</b>	<b>1,262 8%</b>	<b>662 4%</b>	<b>546 3%</b>	<b>1,748 11%</b>	<b>301 2%</b>	<b>477 3%</b>	<b>2,499 16%</b>	<b>301 2%</b>	<b>1,341 8%</b>	<b>82 1%</b>	<b>849 5%</b>	<b>1,027 6%</b>	<b>834 5%</b>	<b>279 2%</b>	<b>623 4%</b>	<b>1,229 8%</b>	<b>161 1%</b>	<b>262 2%</b>	<b>93 1%</b>	<b>1,325 8%</b>	<b>119 1%</b>	<b>100 1%</b>
Mahan - Female Prison	747 100%	56 7%	37 5%	33 4%	80 11%	14 2%	12 2%	62 8%	24 3%	55 7%	6 1%	48 6%	62 8%	58 8%	16 2%	42 6%	41 5%	5 1%	15 2%	12 2%	56 7%	9 1%	4 1%
<b>Total Prison Complex</b>	<b>16,867 100%</b>	<b>1,318 8%</b>	<b>699 4%</b>	<b>579 3%</b>	<b>1,828 11%</b>	<b>315 2%</b>	<b>489 3%</b>	<b>2,561 15%</b>	<b>325 2%</b>	<b>1,396 8%</b>	<b>88 1%</b>	<b>897 5%</b>	<b>1089 6%</b>	<b>892 5%</b>	<b>295 2%</b>	<b>665 4%</b>	<b>1,270 8%</b>	<b>166 1%</b>	<b>277 2%</b>	<b>105 1%</b>	<b>1,381 8%</b>	<b>128 1%</b>	<b>104 1%</b>

### Youth Complex Offenders By County Of Commitment

Institution	Total	Atl	Ber	Burl	Cam	Cape May	Cum	Ess	Glou	Hud	Hunt	Mer	Mid	Mon	Mor	Oc	Pas	Sal	Som	Sus	Un	War	Not Coded
<b>Garden State</b>	1,801 100%	118 7%	46 3%	63 3%	254 14%	31 2%	38 2%	231 13%	34 2%	148 8%	8 0%	129 7%	118 7%	109 6%	21 1%	71 4%	146 8%	21 1%	45 2%	13 1%	139 8%	17 1%	1 0%
<b>Mountainview</b>	1,054 100%	52 5%	53 5%	34 3%	98 9%	22 2%	14 1%	147 14%	17 2%	117 11%	9 1%	24 2%	76 7%	56 5%	26 2%	20 2%	115 11%	12 1%	29 3%	11 1%	109 10%	13 1%	0 0%
<b>Wagner Main</b>	609 100%	42 7%	18 3%	21 3%	87 14%	5 1%	8 1%	91 15%	12 2%	53 9%	2 0%	48 8%	40 7%	36 6%	7 1%	22 4%	49 8%	11 2%	5 1%	1 0%	45 7%	5 1%	1 0%
<b>Wagner Ad Seg</b>	290 100%	16 6%	14 5%	10 3%	32 11%	8 3%	10 3%	47 16%	4 1%	37 13%	0 0%	16 6%	15 5%	15 5%	5 2%	12 4%	16 6%	3 1%	6 2%	0 0%	23 8%	1 0%	0 0%
<b>Wagner Minimum Units</b>	139 100%	11 8%	2 1%	9 6%	20 14%	2 1%	2 1%	20 14%	2 1%	13 9%	0 0%	10 7%	12 9%	4 3%	0 0%	5 4%	15 11%	1 1%	0 0%	0 0%	11 8%	0 0%	0 0%
<b>Wagner Total</b>	1,038 100%	69 7%	34 3%	40 4%	139 13%	15 1%	20 2%	158 15%	18 2%	103 10%	2 0%	74 7%	67 6%	55 5%	12 1%	39 4%	80 8%	15 1%	11 1%	1 0%	79 8%	6 1%	1 0%
<b>Total Youth Complex</b>	3,893 100%	239 6%	55 1%	44 1%	100 3%	8 0%	20 1%	323 8%	16 0%	112 3%	7 0%	72 2%	82 2%	87 2%	24 1%	33 1%	115 3%	1 0%	28 1%	8 0%	141 4%	6 0%	16 0%

### Offenders In Halfway Houses, County Jails, and St. Francis By County Of Commitment

Institution	Total	Atl	Ber	Burl	Cam	Cape May	Cum	Ess	Glou	Hud	Hunt	Mer	Mid	Mon	Mor	Oc	Pas	Sal	Som	Sus	Un	War	Not Coded
Central Medical Unit	8 100%	1 13%	0 0%	0 0%	0 0%	0 0%	2 25%	2 25%	0 0%	1 13%	0 0%	0 0%	0 0%	0 0%	0 0%	1 13%	0 0%	0 0%	0 0%	0 0%	1 13%	0 0%	0 0%
County Jail	178 100%	3 2%	1 1%	3 2%	5 3%	0 0%	2 1%	13 7%	0 0%	7 4%	1 1%	4 2%	5 3%	1 1%	1 1%	4 2%	4 2%	1 1%	1 1%	0 0%	4 2%	0 0%	118 66%
Halfway House	2,864 100%	242 8%	104 4%	74 3%	384 13%	53 2%	75 3%	355 12%	49 2%	283 10%	16 1%	153 5%	148 5%	146 5%	45 2%	96 3%	263 9%	34 1%	49 2%	17 1%	266 9%	10 0%	2 0%
<b>Total Halfway Houses, County Jails, St. Francis</b>	<b>3,050 100%</b>	<b>246 8%</b>	<b>105 3%</b>	<b>77 3%</b>	<b>389 13%</b>	<b>53 2%</b>	<b>79 3%</b>	<b>370 12%</b>	<b>49 2%</b>	<b>291 10%</b>	<b>17 1%</b>	<b>157 5%</b>	<b>153 5%</b>	<b>147 5%</b>	<b>46 2%</b>	<b>101 3%</b>	<b>267 9%</b>	<b>35 1%</b>	<b>50 2%</b>	<b>17 1%</b>	<b>271 9%</b>	<b>10 0%</b>	<b>120 4%</b>