

The New Jersey
**CONSTRUCTION
REPORTER**

AUGUST 2012 DATA

CHRIS CHRISTIE, Governor
STATE OF NEW JERSEY

RICHARD E. CONSTABLE III, Commissioner
DEPARTMENT OF COMMUNITY AFFAIRS

EDWARD M. SMITH, Director
DIVISION OF CODES AND STANDARDS

DISTRIBUTED BY THE

New Jersey Department of
COMMUNITY AFFAIRS
DIVISION OF CODES AND STANDARDS
101 South Broad Street,
PO Box 802
Trenton, NJ 08625-0802
www.nj.gov/dca/divisions/codes/reporter/



THE NEW JERSEY CONSTRUCTION REPORTER

TABLE OF CONTENTS

Contents	Description	Pages
INTRODUCTION		
Highlights	Analysis of data in this month's report	i-iii
Foreword	Background information	1
Exhibits A - C	Definition of terms used throughout the tables	2 - 4
RESIDENTIAL CONSTRUCTION		
Tables 1 - 6	Housing units authorized and certified, housing units demolished, monthly and year-to-date figures	5 - 14
OFFICE SPACE		
Tables 7 - 8	Square feet of office space authorized and certified, monthly and year-to-date figures	15 - 19
RETAIL SPACE		
Tables 9 - 10	Square feet of retail space authorized and certified, monthly and year-to-date figures	20 - 24
DOLLAR AMOUNTS		
Tables 11 - 13	Dollar amount of construction authorized by county and top municipalities, monthly and year to date; dollar amount of construction authorized by use group and permit type, New Jersey totals, monthly and year to date	25 - 30
MUNICIPAL SUMMARY DATA		
	Housing units authorized and certified, office and retail space authorized, and dollar amount of construction authorized by municipality, monthly totals	MSD-1 - MSD-12
ILLUSTRATIONS		
Map 1	Housing units authorized by municipality, year to date	9
Map 2	Office space authorized by municipality, year to date	18
Map 3	Retail space authorized by municipality, year to date	23
Map 4	Estimated cost of construction authorized by municipality, year to date	28

AUGUST 2012 HIGHLIGHTS

- The estimated cost of construction authorized by building permits was \$865.4 million in August.
- New houses and repair and expansion of existing dwellings accounted for \$439.2 million (50.7 percent). Office, retail, and other nonresidential work totaled \$426.3 million (49.3 percent).
- 1,081 new dwellings were authorized by permits; this was the third consecutive month that new housing exceeded 1,000 units.
- 563 of New Jersey's 566 municipalities reported.
- Two Middlesex communities, Edison and Sayreville, had the most work. Edison Township reported \$31.3 million of construction. A new, 567,000 square foot office/warehouse facility accounted for \$13.3 million.
- Sayreville had \$25.4 million of activity, much of which (\$21.2 million) was for a public school renovation.
- Hoboken in Hudson County had \$23.7 million of construction. Two new housing developments accounted for \$18.6 million. One will provide 59 apartments primarily for artists. The other will offer 81 condominium units along with retail space. Hoboken had 140 authorized dwelling units; no other municipality had more new housing that month.

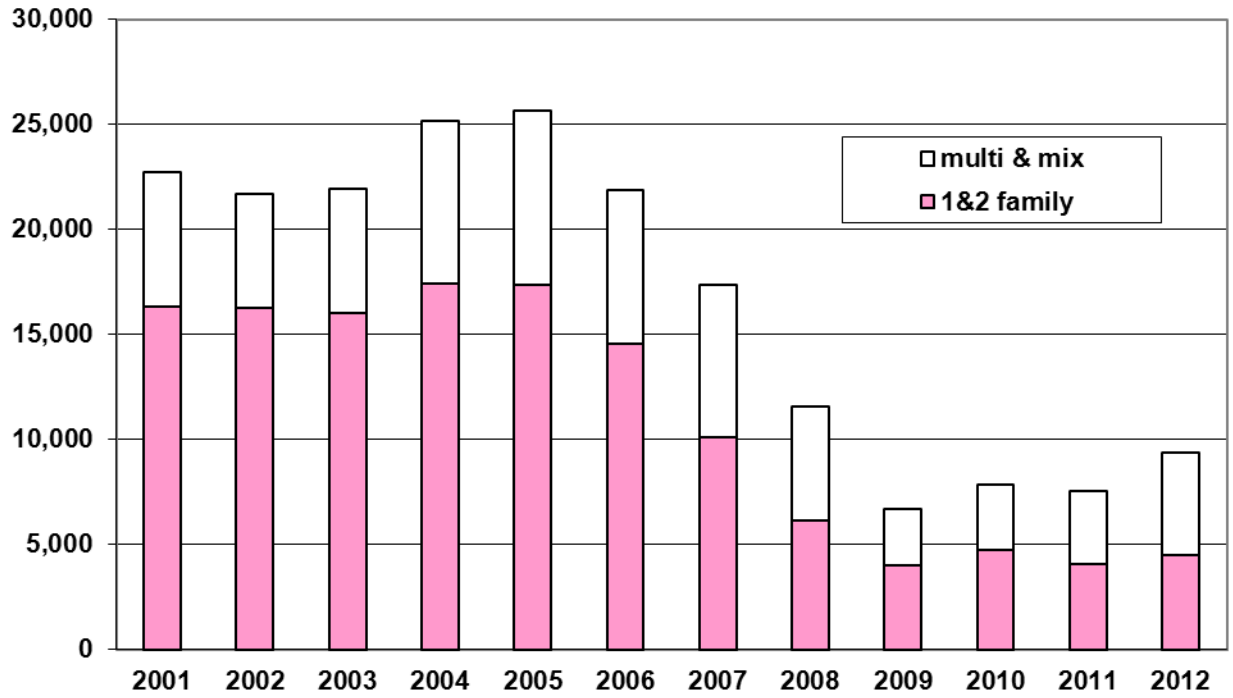
Year-to-Date

- New Jersey municipalities issued building permits for \$7.464 billion of construction between January and August 2012. This was \$124.7 million more than this time last year, an increase of 1.7 percent.
- There were 9,387 authorized housing units; this was 1,824 more than (24.1 percent) last year.
- Office and retail construction also are higher than this time last year by 43.3 percent and 33.1 percent, respectively.
- Jersey City in Hudson County and Newark in Essex County had the most work through August. Jersey City had \$186.4 million between January and August and 539 new dwellings, top in both categories.
- Newark had \$179.6 million of construction through August. Some of the bigger projects were a new office building for the electronics firm Panasonic, renovation of St. Michael's Medical Center, and university expansions at both the Rutgers-Newark and New Jersey Institute of Technology campuses.

Major Construction Indicators, New Jersey: Year-to-Date Trends				
Period	Estimated Cost of Construction	Authorized Housing Units	Authorized Office Space (square feet)	Authorized Retail Space (square feet)
Jan – August 2012	\$7,463,637,436	9,387	5,164,501	1,602,605
Jan – August 2011	\$7,338,959,063	7,563	3,604,894	1,203,938
Jan – August 2010	\$6,477,115,400	7,823	3,603,879	1,593,867
Jan – August 2009	\$6,433,888,059	6,667	2,409,405	1,573,697
Jan – August 2008	\$9,881,873,384	11,584	5,145,483	4,826,935
Jan – August 2007	\$10,024,136,462	17,371	6,137,178	2,942,040
Jan – August 2006	\$10,450,657,277	21,884	7,315,171	4,375,293
Jan – August 2005	\$9,875,901,592	25,615	7,349,034	4,920,026
Jan – August 2004	\$8,864,794,829	25,153	7,191,451	3,603,455
<i>Difference Between 2011 and 2012 year to date</i>				
2011 - 2012	\$124,678,373	1,824	1,559,607	398,667
Percent Change	1.7%	24.1%	43.3%	33.1%
<i>Difference Between 2010 and 2011 year to date</i>				
2010 - 2011	\$861,843,663	-260	1,015	-389,929
+Percent Change	13.3%	-3.3%	0.0%	-24.5%
<i>Difference Between 2009 and 2010 year to date</i>				
2009 - 2010	\$43,227,341	1,156	1,194,474	20,170
Percent Change	0.7%	17.3%	49.6%	1.3%
Source: N.J. Department of Community Affairs, 10/18/12				

- Most of the \$108.2 million authorized in Edison Township was for office, warehouse, and other nonresidential buildings. Other big commercial improvements were a new furniture warehouse and expansion of the JFK Medical Center.
- Over 90 percent of the work in Cliffside Park, Bergen County was for a 14-story, 300-unit housing development.
- State buildings is a category of permit activity by State agencies and instrumentalities. It includes permits issued to New Jersey public colleges and universities. It also includes work done on behalf of special-purpose agencies, like New Jersey Transit or the New Jersey Turnpike Authority. The dollar amount of work authorized for State buildings through August was \$240.4 million. Much of this was from new development and renovations by public colleges and universities. Major development is underway by Rutgers University in New Brunswick, New Jersey City University in Jersey City, Kean University in Union, and Rowan University Medical School in Camden.

Authorized Housing Units, Jan-Aug. 2001-12



THE NEW JERSEY CONSTRUCTION REPORTER contains statistics on construction activity in New Jersey. Information in the report comes from construction officials who administer the State Uniform Construction Code (UCC) (N.J.A.C. 5:23-1 et seq.) in New Jersey's 566 municipalities.

Each month, construction officials send to the New Jersey Department of Community Affairs (DCA) reports on the permits and certificates they issue. Permits authorize the start of construction and cover four types of activity: (1) New construction permits authorize the start of a new structure. (2) Permits for additions refer to work that will add space (volume and square feet) to an existing building. (3) Alterations also involve existing structures, but the work authorized will not add space. Typically, construction officials issue permits for alterations when the work is subject to one or more of the UCC's major subcodes (building, electrical, plumbing, fire protection). (4) Demolition permits authorize the removal of a building or some other structure. The *CONSTRUCTION REPORTER* identifies only those demolitions that will result in the loss of housing.

In addition to permits, the *CONSTRUCTION REPORTER* has information on the certificates issued by construction officials. While permits authorize the start of construction, certificates are issued for work completed and ready for occupancy. Each month, the *CONSTRUCTION REPORTER* will report on the number of housing units and the amount of office and retail space authorized for construction, along with the number of housing units and the amount of office and retail space completed.

Data Comparability

The *CONSTRUCTION REPORTER* contains information on authorized housing units that is tabulated two different ways. The DCA tabulates Tables 1 through 3 and Tables 8 through 13 based on the use of buildings, defined in "groups" by New Jersey's UCC. Exhibit B on page 3 summarizes these groups.

Tables 4, 5, and 6 show authorized housing units as defined and tabulated by the United States Census Bureau. The New Jersey Department of Labor and Workforce Development prepares these tables for publication in the *CONSTRUCTION REPORTER*. Exhibit C on page 4 describes the housing definitions used by the Census Bureau.

The DCA series and the Census Bureau series on authorized housing units differ two important ways. First, the DCA series includes housing units created as a result of permits issued to alter or make additions to existing structures. The Census Bureau counts only those housing units authorized from permits issued for new construction.

Second, the Census Bureau imputes data for localities that fail to submit monthly reports on time. An asterisk in the Census column of data appearing in the Municipal Summary Data table at the back of the *CONSTRUCTION REPORTER* indicates those towns with imputed data. The Census Bureau bases these imputations on historic trends. The DCA series shows information for only those towns that submitted monthly reports. If a municipality failed to submit a monthly report on time, "No report" appears in the appropriate columns in the Municipal Summary Data table.

Additional Terms

A number of other terms appear in the tables throughout the *CONSTRUCTION REPORTER*. Exhibit A on page 2 defines additional construction permit and certificate terms.

Exhibit A

Summary of Building Permit and Certificate Terms	
Addition	Permit type issued for construction work that adds space (volume and square feet) to an existing structure.
Alteration	Permit type involving one or more subcodes (building, electrical, fire protection, and plumbing). The work is authorized for an existing structure and does not add new space.
Certificate	A document issued by a construction official indicating completion of work for which a permit was issued.
Dollar Amount of Construction	Estimated cost of work, as reported by the permit applicant to the construction official.
Demolition	Permit type authorizing the demolition of an existing structure.
Housing Units Certified	A rental or for-sale unit completed and certified by the construction official for conforming to the standards in the New Jersey UCC.
Housing Units Authorized by Building Permits	A rental or for-sale dwelling unit authorized by a construction permit. See Exhibits B and C for explanations of the different definitions of housing structures. The Table 1 series and Tables 2 and 3 show housing units as classified by the residential use groups defined in Exhibit B. Tables 4, 5, and 6 identify authorized housing as defined by the U.S. Census Bureau. (See Exhibit C.)
Housing Unit Demolitions	Rental or for-sale housing to be demolished, as reported to the construction official by permit applicants.
New Construction	Permit type authorizing the start of a new structure.
Permit	A document issued by construction officials that authorizes the construction of a new structure or an addition, alteration, or demolition of an existing structure.
Square Feet	Estimated building area, as reported on permits for new construction and additions.
State Buildings	Buildings or structures constructed or owned by the State or any of its instrumentalities. Construction activity reported in this category includes State offices, colleges, hospitals, prisons, facilities operated by New Jersey Transit and the New Jersey Sports and Exposition Authority, and other State authorities.

Exhibit B

Building Groups	
Residential	Buildings where members of households live. Examples of residential groups include: one- and two-family houses (R-3 and R-5); apartments, dormitories, other multifamily houses (R-2); and mixed-use housing, where the house is a relatively smaller part of a building that has another use (e.g., an apartment over a store). Therapeutic residences (R-4) for 6 to 16 occupants are also included in this category. The Table 1 series and Tables 2 and 3 show authorized housing units by group definition.
----- The following groups refer to industrial, commercial, and other nonresidential structures. -----	
Assembly	Structures where people gather for civic, social, or religious purposes. Examples include: theaters and concert halls (group A-1); night clubs, dance halls, casino gaming areas, restaurants, taverns, and bars (A-2); churches, libraries, amusement arcades, community halls, gymnasiums, indoor swimming pools, art galleries, and museums (A-3); arenas, skating rinks, swimming pools, tennis courts (A-4); and grandstands, bleachers stadiums, and amusement park structures (A-5).
Business	Office buildings (group B) for business transactions of all kinds including banks, corporate offices, professional offices, government buildings, beauty shops, motor vehicle showrooms, and out-patient clinics.
Educational	Buildings for educational purposes through the 12th grade (group E).
High Hazard	Buildings used to manufacture, process, or store materials that constitute a high fire, explosion, or health hazard (group H).
Hotels, Motels, Guest Houses	Buildings for shelter and sleeping where the primary occupants use the facility on a temporary basis, staying less than 30 days (group R-1).
Industrial	Factory buildings where the occupants make, process, or assemble products that are not highly combustible, flammable, or explosive. Includes automotive, appliance, and furniture manufacturers; electric power plants; food processing plants; foundries; and water pumping, solid waste disposal, and incineration plants (group F).
Institutional	Buildings for people who suffer from physical limitations because of age or health; buildings for people detained for penal or correction purposes. Includes: supervised residential homes for six or more people (group I-1); medical and nursing-care facilities (I-2); jails, reformatories, and asylums (I-3); and day care for six or more occupants (I-4).
Mercantile	Buildings for display and sale purposes. Includes retail stores, automotive service stations, drug stores, shops, salesrooms, and markets (group M).
Storage	Buildings used to store goods that are not highly combustible or explosive. Includes warehouses, open parking garages, lumberyards, livestock shelters, and mausoleums (group S).
Signs, Fences, Miscellaneous	Accessory buildings and miscellaneous structures including fences over six feet in height, signs, private garages, sheds, agricultural buildings, carports, retaining walls, tanks, and swimming pools (group U).

Exhibit C

Residential Structures (U.S. Census Bureau Definitions)	
<p>Tables 4, 5, and 6 show authorized housing units based on the structure types defined below by the U.S. Census Bureau. The number of units shown in these tables refers to those authorized by building permits issued for new construction only.</p>	
<p>Single-Family Houses</p>	<p>Include all detached one-family houses and all attached one-family houses separated by a wall that extends from ground to roof with no common heating system or inter-structural public utilities. Include prefabricated, sectionalized, panelized, and modular homes that are manufactured partially off site, but are transported and assembled at the construction site.</p>
<p>Two-Family Buildings</p>	<p>Include all buildings with two housing units that may be above one another or side by side. If built side by side, the structures (1) do not have a wall that extends from ground to roof; or (2) share a heating system; or (3) have inter-structural public utilities, such as water supply and sewage disposal.</p>
<p>Three- and Four-Family Buildings</p>	<p>Include all buildings with three or four housing units. If built side by side, the structures (1) do not have a wall that extends from ground to roof; or (2) share a heating system; or (3) have inter-structural public utilities, such as water supply and sewage disposal.</p>
<p>Five-or-More-Family Buildings</p>	<p>Include all buildings with five or more housing units. If built side by side, the structures (1) do not have a wall that extends from ground to roof; or (2) share a heating system; or (3) have inter-structural public utilities, such as water supply and sewage disposal.</p>
<p>Private Housing Units</p>	<p>Housing owned by a private company or individual during the period of construction. This includes all housing built by nonprofit organizations and "turnkey" housing; for example, housing that will be sold to a local public housing authority when completed.</p>
<p>Public Housing Units</p>	<p>Housing owned by a governmental body during the period of construction.</p>

Table 1a HOUSE 10/18/12

Housing Units Authorized by Building Permits: New Jersey Counties, August 2012								
County	August				Year to Date			
	Total	1 & 2 Family	Multifamily	Mixed Use	Total	1 & 2 Family	Multifamily	Mixed Use
ATLANTIC	48	48	0	0	292	279	12	1
BERGEN	49	36	12	1	862	307	552	3
BURLINGTON	66	40	26	0	358	247	110	1
CAMDEN	6	6	0	0	466	85	381	0
CAPE MAY	41	40	0	1	290	280	8	2
CUMBERLAND	15	15	0	0	83	81	2	0
ESSEX	32	20	12	0	372	149	223	0
GLOUCESTER	67	67	0	0	299	299	0	0
HUDSON	152	6	146	0	1,692	60	1,632	0
HUNTERDON	4	4	0	0	58	32	25	1
MERCER	7	7	0	0	178	98	80	0
MIDDLESEX	168	68	100	0	715	465	249	1
MONMOUTH	142	81	60	1	662	453	203	6
MORRIS	39	35	4	0	428	231	191	6
OCEAN	94	56	38	0	1,012	828	184	0
PASSAIC	66	9	57	0	233	63	169	1
SALEM	12	12	0	0	43	43	0	0
SOMERSET	23	23	0	0	652	218	434	0
SUSSEX	21	3	18	0	67	49	18	0
UNION	28	28	0	0	583	191	392	0
WARREN	1	1	0	0	31	31	0	0
STATE BUILDINGS*	0	0	0	0	0	0	0	0
NEW JERSEY	1,081	605	473	3	9,376	4,489	4,865	22
NJ 2011 10/7/11	975	507	464	4	7,563	4,071	3,203	289

The definition of housing units in the Table 1 series and Table 2 do not match those in Tables 4, 5, and 6. See "Data Comparability" section on page 1, and Exhibits B and C on pages 3 and 4 for details.

*State buildings refer to structures owned or constructed by the State or any of its instrumentalities. See Exhibit A, Summary of Building Permit and Certificate Terms, on page 2.

Table 1b HSEMUN1 10/18/12

Housing Units Authorized by Building Permits: Top Municipalities, August 2012						
Rank	Municipality	County	Total	1 & 2 Family	Multifamily	Mixed Use
1	Hoboken City	Hudson	140	0	140	0
2	Howell Township	Monmouth	87	27	60	0
3	Woodbridge Township	Middlesex	64	4	60	0
4	Piscataway Township	Middlesex	54	14	40	0
5	Woolwich Township	Gloucester	44	44	0	0
6	Clifton City	Passaic	32	2	30	0
7	Lakewood Township	Ocean	29	15	14	0
8	Willingboro Township	Burlington	27	1	26	0
9	Passaic City	Passaic	27	0	27	0
10	Egg Harbor Township	Atlantic	26	26	0	0
11	Stafford Township	Ocean	25	1	24	0
12	Monroe Township	Middlesex	20	20	0	0
13	Hardyston Township	Sussex	18	0	18	0
14	North Caldwell Borough	Essex	13	1	12	0
15	Woodcliff Lake Borough	Bergen	12	0	12	0
16	Old Bridge Township	Middlesex	12	12	0	0
17	Vineland City	Cumberland	10	10	0	0
18	West Caldwell Township	Essex	10	10	0	0
19	Long Branch City	Monmouth	10	10	0	0
20	Manalapan Township	Monmouth	10	10	0	0
	TOP MUNICIPALITIES		530	207	323	0
	NEW JERSEY		1,081	605	473	3
	TOP AS % OF STATE		49.0%	34.2%	68.3%	0.0%

The definition of housing units in the Table 1 series and Table 2 do not match those in Tables 4, 5, and 6. See "Data Comparability" section on page 1, and Exhibits B and C on pages 3 and 4 for details.

Table 1c HSEMUN2 10/18/12

Housing Units Authorized by Building Permits: Top Municipalities, January through August 2012						
Rank	Municipality	County	Total	1 & 2 Family	Multifamily	Mixed Use
1	Jersey City	Hudson	539	22	517	0
2	Franklin Township	Somerset	463	97	366	0
3	Weehawken Township	Hudson	355	0	355	0
4	Cherry Hill Township	Camden	339	9	330	0
5	West New York Town	Hudson	321	2	319	0
6	Lakewood Township	Ocean	307	293	14	0
7	Cliffside Park Borough	Bergen	306	6	300	0
8	Hoboken City	Hudson	214	4	210	0
9	Fort Lee Borough	Bergen	212	18	194	0
10	Monroe Township	Middlesex	200	185	15	0
11	Howell Township	Monmouth	192	72	120	0
12	Rahway City	Union	173	2	171	0
13	Piscataway Township	Middlesex	152	88	64	0
14	Bayonne City	Hudson	151	9	142	0
15	Woodbridge Township	Middlesex	140	20	120	0
16	Verona Township	Essex	135	5	130	0
17	Hanover Township	Morris	116	23	93	0
18	Egg Harbor Township	Atlantic	104	104	0	0
19	Barnegat Township	Ocean	100	42	58	0
20	Cinnaminson Township	Burlington	98	38	60	0
	TOP MUNICIPALITIES		4,617	1,039	3,578	0
	NEW JERSEY		9,376	4,489	4,865	22
	TOP AS % OF STATE		49.2%	23.1%	73.5%	0.0%

The definition of housing units in the Table 1 series and Table 2 do not match those in Tables 4, 5, and 6. See "Data Comparability" section on page 1, and Exhibits B and C on pages 3 and 4 for details.

Table 1d NEWHSE 10/18/12

Housing Units Authorized by New Construction Building Permits: New Jersey Counties, August 2012								
County	August				Year to Date			
	Total	1 & 2 Family	Multifamily	Mixed Use	Total	1 & 2 Family	Multifamily	Mixed Use
ATLANTIC	46	46	0	0	287	274	12	1
BERGEN	48	36	12	0	856	303	552	1
BURLINGTON	66	40	26	0	353	243	110	0
CAMDEN	6	6	0	0	461	80	381	0
CAPE MAY	40	39	0	1	283	274	8	1
CUMBERLAND	14	14	0	0	74	73	1	0
ESSEX	32	20	12	0	370	147	223	0
GLOUCESTER	67	67	0	0	299	299	0	0
HUDSON	152	6	146	0	1,669	58	1,611	0
HUNTERDON	4	4	0	0	57	31	25	1
MERCER	7	7	0	0	178	98	80	0
MIDDLESEX	168	68	100	0	713	464	249	0
MONMOUTH	142	81	60	1	659	450	203	6
MORRIS	39	35	4	0	427	230	191	6
OCEAN	93	55	38	0	995	811	184	0
PASSAIC	66	9	57	0	232	62	169	1
SALEM	12	12	0	0	42	42	0	0
SOMERSET	23	23	0	0	651	217	434	0
SUSSEX	21	3	18	0	66	48	18	0
UNION	27	27	0	0	571	184	387	0
WARREN	1	1	0	0	31	31	0	0
STATE BUILDINGS*	0	0	0	0	0	0	0	0
NEW JERSEY	1,074	599	473	2	9,274	4,419	4,838	17
NJ 2011 10/7/11	962	500	458	4	7,388	4,010	3,095	283

The definition of housing units in the Table 1 series and Table 2 do not match those in Tables 4, 5, and 6. See "Data Comparability" section on page 1, and Exhibits B and C on pages 3 and 4 for details.

*State buildings refer to structures owned or constructed by the State or any of its instrumentalities. See Exhibit A, Summary of Building Permit and Certificate Terms, on page 2.

You are viewing an Archived Copy from the New Jersey State Library
Housing Units Authorized by Building Permits
January-August 2012

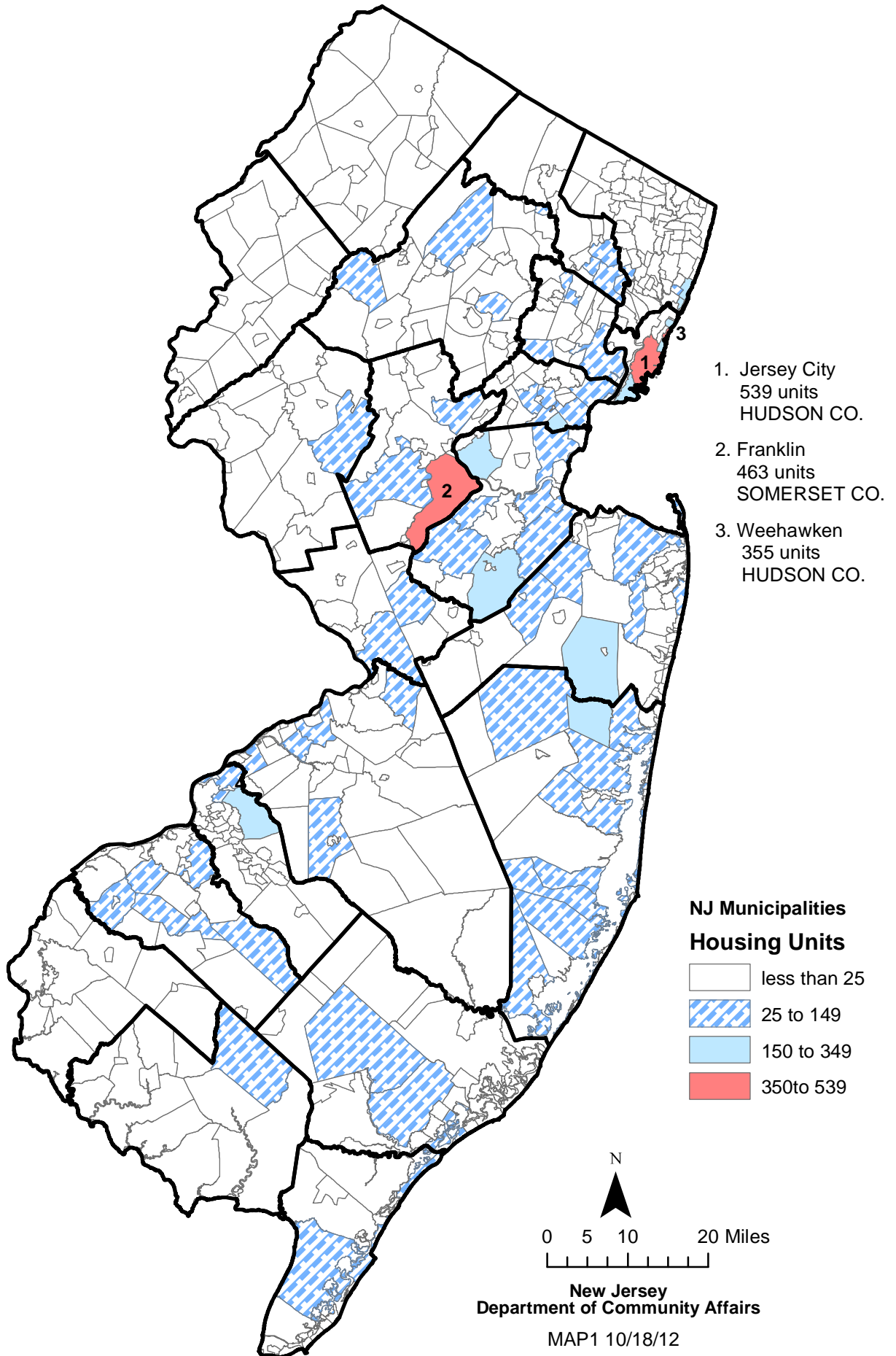


Table 2 CERTS 10/18/12

Housing Units Certified: New Jersey Counties, August 2012								
County	August				Year to Date			
	Total	1 & 2 Family	Multi- family	Mixed Use	Total	1 & 2 Family	Multi- family	Mixed Use
ATLANTIC	36	36	0	0	326	247	75	4
BERGEN	52	39	13	0	698	279	416	3
BURLINGTON	24	24	0	0	292	225	67	0
CAMDEN	54	15	39	0	269	115	154	0
CAPE MAY	49	49	0	0	373	349	23	1
CUMBERLAND	11	11	0	0	91	89	0	2
ESSEX	21	13	8	0	367	101	266	0
GLOUCESTER	50	46	0	4	372	344	24	4
HUDSON	334	4	330	0	862	35	827	0
HUNTERDON	8	8	0	0	83	45	38	0
MERCER	31	12	19	0	160	69	91	0
MIDDLESEX	121	65	56	0	727	410	316	1
MONMOUTH	120	70	50	0	525	387	136	2
MORRIS	39	36	3	0	288	171	117	0
OCEAN	125	89	36	0	1,031	780	249	2
PASSAIC	32	8	24	0	143	40	102	1
SALEM	9	8	0	1	44	42	0	2
SOMERSET	16	16	0	0	337	182	155	0
SUSSEX	4	4	0	0	47	47	0	0
UNION	25	21	4	0	426	129	296	1
WARREN	9	9	0	0	61	58	3	0
STATE BUILDINGS*	0	0	0	0	0	0	0	0
NEW JERSEY	1,170	583	582	5	7,522	4,144	3,355	23
NJ 2011 10/7/11	841	533	306	2	6,121	3,970	2,115	36

The definition of housing units in the Table 1 series and Table 2 do not match those in Tables 4, 5, and 6. See "Data Comparability" section on page 1, and Exhibits B and C on pages 3 and 4 for details.

*State buildings refer to structures owned or constructed by the State or any of its instrumentalities. See Exhibit A, Summary of Building Permit and Certificate Terms, on page 2.

Table 3 DEMOS 10/18/12

Housing Units Demolished: New Jersey Counties, August 2012								
County	August				Year to Date			
	Total	1 & 2 Family	Multifamily	Mixed Use	Total	1 & 2 Family	Multifamily	Mixed Use
ATLANTIC	14	14	0	0	99	96	0	3
BERGEN	22	21	0	1	193	183	4	6
BURLINGTON	4	4	0	0	70	67	1	2
CAMDEN	30	30	0	0	147	145	2	0
CAPE MAY	12	12	0	0	132	128	4	0
CUMBERLAND	3	3	0	0	27	27	0	0
ESSEX	8	8	0	0	76	64	11	1
GLOUCESTER	6	6	0	0	32	31	0	1
HUDSON	19	8	11	0	113	52	61	0
HUNTERDON	0	0	0	0	19	18	0	1
MERCER	6	5	1	0	64	58	6	0
MIDDLESEX	15	3	12	0	109	63	42	4
MONMOUTH	22	22	0	0	215	191	7	17
MORRIS	11	11	0	0	97	94	2	1
OCEAN	26	26	0	0	239	234	0	5
PASSAIC	7	7	0	0	89	55	27	7
SALEM	7	7	0	0	17	17	0	0
SOMERSET	6	6	0	0	40	40	0	0
SUSSEX	3	3	0	0	22	21	0	1
UNION	6	6	0	0	150	63	81	6
WARREN	1	1	0	0	11	11	0	0
STATE BUILDINGS*	0	0	0	0	0	0	0	0
NEW JERSEY	228	203	24	1	1,961	1,658	248	55
NJ 201110/7/11	268	231	23	14	1,845	1,587	214	44

*State buildings refer to structures owned or constructed by the State or any of its instrumentalities. See Exhibit A, Summary of Building Permit and Certificate Terms, on page 2.

Table 4

Residential Construction Authorized by Building Permits (Census Definitions) New Jersey, August 2012						
Type of Construction	July 2012	August 2012	Year to Date*			
			2011	2012	Change	
					Number	Percent
Total Private Units Authorized	1,888	1,332	8,566	11,364	2,798	32.7
Single Family	639	618	4,374	4,728	354	8.1
Two Family	98	40	270	386	116	43.0
Three or Four Family	27	108	123	219	96	78.0
Five or More Family	1,124	566	3,799	6,031	2,232	58.8
CENSUS1 7/20/01						

*Year-to-date totals include data received too late for monthly tabulation. The Census Bureau allocates revisions to prior months and therefore monthly year-to-date totals reflect these changes.

Authorized dwelling units in the Table 1 series and Table 2 do not match those in Tables 4, 5, and 6 due to definitional differences. See "Data Comparability" section on page 1, and Exhibits B and C on pages 3 and 4 for details.

Source: U.S. Census Bureau, Manufacturing and Construction Division
 Prepared by: N.J. Department of Labor and Workforce Development, September, 2012

Table 5

You Are Viewing an Archived Copy from the New Jersey State Library

Residential Construction Authorized by Building Permits (Census Definitions) New Jersey, 1991 to Present						
Year and Month	Number of Municipalities	Total	Single Family	Two Family	3 or 4 Family	5 or More Family
1991	567	14,856	12,869	402	101	1,484
1992	567	19,072	16,506	510	74	1,982
1993	567	25,188	21,340	758	129	2,961
1994	567	25,388	22,437	722	121	2,108
1995	567	21,521	18,341	670	158	2,352
1996	567	24,173	20,853	880	211	2,229
1997	566	28,018	23,472	916	324	3,306
1998	566	31,345	25,459	1,172	221	4,493
1999	566	31,976	25,129	1,468	290	5,089
2000	566	34,585	25,260	1,844	305	7,176
2001	566	28,267	21,503	1,827	779	4,158
2002	566	30,441	22,379	2,110	742	5,210
2003	566	32,984	22,163	2,870	912	7,039
2004	566	35,936	22,429	3,300	1,476	8,731
2005	566	38,588	22,264	3,212	1,437	11,675
2006	566	34,323	17,113	3,088	1,708	12,414
2007	566	25,389	13,066	1,692	1,311	9,320
2008	566	18,363	9,169	664	411	8,119
2009	566	12,421	7,211	400	206	4,604
2010	566	13,540	7,383	680	276	5,201
2011	566	13,079	6,509	438	178	5,954
2012						
January [†]	566	922	412	38	3	469
February	566	1,160	468	32	16	644
March [†]	566	1,259	588	42	15	614
April [†]	566	1,572	687	62	26	797
May [†]	566	1,183	648	34	12	489
June [†]	566	2,048	668	40	12	1,328
July [†]	566	1,888	639	98	27	1,124
August	566	1,332	618	40	108	566
<u>Year to Date*</u>						
August 2011	---	8,566	4,374	270	123	3,799
August 2012	---	11,364	4,728	386	219	6,031

[†]Revised – Monthly data are revised to reflect changes in the year-to-date total.

*Year-to-date totals include data received too late for monthly tabulation. The Census Bureau allocates revisions to prior months and therefore monthly year-to-date totals reflect these changes.

Authorized dwelling units in the Table 1 series and Table 2 do not match those in Tables 4, 5, and 6 due to definitional differences. See "Data Comparability" section on page 1, and Exhibits B and C on pages 3 and 4 for details.

Source: U.S. Census Bureau, Manufacturing and Construction Division

Prepared by: N.J. Department of Labor and Workforce Development, September, 2012

Table 6

Residential Construction Authorized by Building Permits (Census Definitions) New Jersey Counties, 2012						
County	August					Total Year to Date* 2012
	Total	Single Family	Two Family	3 or 4 Family	5 or More Family	
ATLANTIC	56	50	0	0	6	305
BERGEN	112	61	10	0	41	1,273
BURLINGTON	77	38	0	0	39	471
CAMDEN	42	14	0	0	28	696
CAPE MAY	40	34	6	0	0	273
CUMBERLAND	20	20	0	0	0	130
ESSEX	59	18	2	4	35	764
GLOUCESTER	93	43	2	3	45	383
HUDSON	106	3	8	0	95	1,588
HUNTERDON	11	6	0	0	5	125
MERCER	22	10	0	0	12	187
MIDDLESEX	113	61	0	0	52	809
MONMOUTH	154	78	0	0	76	729
MORRIS	57	42	0	0	15	605
OCEAN	84	58	2	0	24	801
PASSAIC	70	13	0	0	57	359
SALEM	8	6	2	0	0	44
SOMERSET	138	22	0	101	15	855
SUSSEX	16	11	0	0	5	144
UNION	43	19	8	0	16	739
WARREN	11	11	0	0	0	84
NEW JERSEY	1,332	618	40	108	566	11,364

CENSUS3 7/20/01

*Year-to-date totals include data received too late for monthly tabulation. See Table 5 for revised statewide data for prior months.

Authorized dwelling units in the Table 1 series and Table 2 do not match those in Tables 4, 5, and 6 due to definitional differences. See "Data Comparability" section on page 1, and Exhibits B and C on pages 3 and 4 for details.

Source: U.S. Census Bureau, Manufacturing and Construction Division
Prepared by: N.J. Department of Labor and Workforce Development, September, 2012

Table 7a OFFCSPC 10/18/12

Office Square Feet Authorized by Building Permits: New Jersey Counties, August 2012						
County	August			Year to Date		
	Total	New Construction	Additions	Total	New Construction	Additions
ATLANTIC	14,871	7,264	7,607	50,298	34,548	15,750
BERGEN	68	0	68	365,719	253,625	112,094
BURLINGTON	9,000	9,000	0	315,747	306,707	9,040
CAMDEN	26,772	7,912	18,860	142,186	102,091	40,095
CAPE MAY	20,375	20,375	0	36,598	33,024	3,574
CUMBERLAND	640	0	640	6,955	5,400	1,555
ESSEX	559	0	559	400,340	381,734	18,606
GLOUCESTER	2,128	2,040	88	23,262	11,503	11,759
HUDSON	0	0	0	122,404	122,404	0
HUNTERDON	1	0	1	37,194	14,433	22,761
MERCER	154,979	154,979	0	406,273	406,273	0
MIDDLESEX	674,836	658,248	16,588	1,439,867	1,304,520	135,347
MONMOUTH	3,726	2,905	821	81,251	61,793	19,458
MORRIS	6,992	5,496	1,496	527,777	252,854	274,923
OCEAN	50,360	39,860	10,500	333,537	282,305	51,232
PASSAIC	16,518	15,400	1,118	309,289	273,875	35,414
SALEM	0	0	0	5,520	4,800	720
SOMERSET	1,360	1,360	0	83,603	79,885	3,718
SUSSEX	1,359	1,359	0	16,491	15,915	576
UNION	2,400	0	2,400	300,364	38,897	261,467
WARREN	0	0	0	14,673	5,704	8,969
STATE BUILDINGS*	0	0	0	145,153	145,153	0
NEW JERSEY	986,944	926,198	60,746	5,164,501	4,137,443	1,027,058
NJ 2011 10//7/11	701,491	655,101	46,390	3,604,894	3,002,355	602,539

*State buildings refer to structures owned or constructed by the State or any of its instrumentalities. See Exhibit A, Summary of Building Permit and Certificate Terms, on page 2.

Table 7b OFFCMUN1 10/18/12

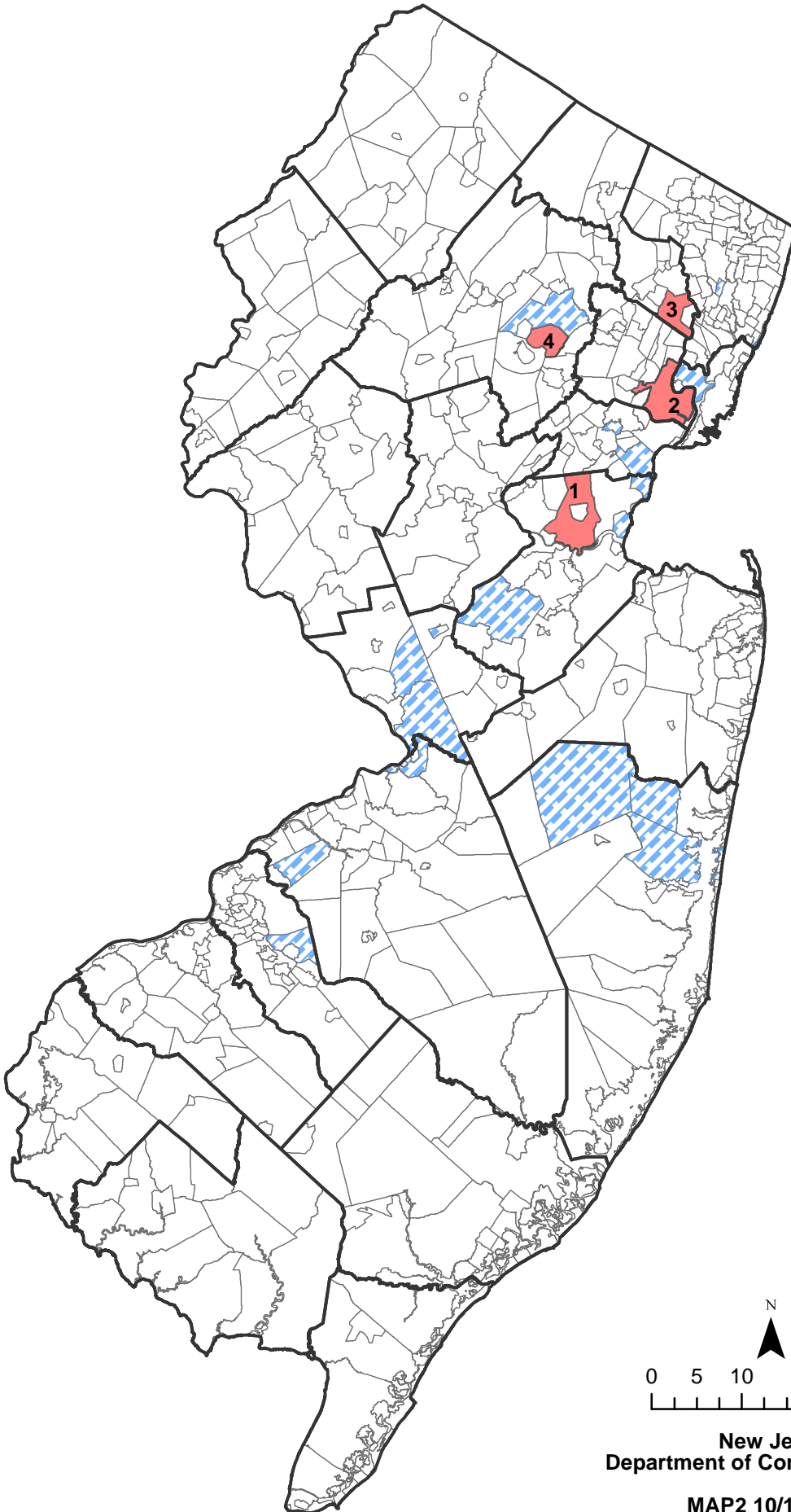
Office Square Feet Authorized by Building Permits: New Jersey Top Municipalities, August 2012					
Rank	Municipality	County	Total	New Construction	Additions
1	Edison Township	Middlesex	567,307	567,307	0
2	Lawrence Township	Mercer	154,979	154,979	0
3	Perth Amboy City	Middlesex	79,620	79,620	0
4	Lakewood Township	Ocean	23,059	23,059	0
5	Middle Township	Cape May	20,375	20,375	0
6	Berlin Township	Camden	18,700	0	18,700
7	Toms River Township	Ocean	16,801	16,801	0
8	Old Bridge Township	Middlesex	16,588	0	16,588
9	Woodland Park Borough	Passaic	15,400	15,400	0
10	Brick Township	Ocean	10,500	0	10,500
11	Mount Laurel Township	Burlington	9,000	9,000	0
12	Woodbridge Township	Middlesex	8,321	8,321	0
13	Haddonfield Borough	Camden	7,912	7,912	0
14	Hammonton Town	Atlantic	7,197	2,470	4,727
15	Hanover Township	Morris	5,496	5,496	0
16	Egg Harbor Township	Atlantic	4,794	4,794	0
17	South Brunswick Township	Middlesex	3,000	3,000	0
18	Galloway Township	Atlantic	2,880	0	2,880
19	Hazlet Township	Monmouth	2,800	2,800	0
20	Logan Township	Gloucester	2,040	2,040	0
TOP MUNICIPALITIES			976,769	923,374	53,395
NEW JERSEY			986,944	926,198	60,746
TOP AS % OF STATE			99.0%	99.7%	87.9%

Table 7c OFFCMUN2 10/18/12

Office Square Feet Authorized by Building Permits: New Jersey Top Municipalities, January-August 2012					
Rank	Municipality	County	Total	New Construction	Additions
1	Edison Township	Middlesex	811,339	811,339	0
2	Newark City	Essex	366,149	366,149	0
3	Clifton City	Passaic	265,718	233,028	32,690
4	Hanover Township	Morris	257,907	10,242	247,665
5	Carteret Borough	Middlesex	245,934	232,134	13,800
6	Parsippany-Troy Hills Twp	Morris	221,020	219,621	1,399
7	South Brunswick Township	Middlesex	210,555	113,036	97,519
8	Moorestown Township	Burlington	199,200	199,200	0
9	Edgewater Borough	Bergen	196,116	194,946	1,170
10	Lawrence Township	Mercer	154,979	154,979	0
11	Jackson Township	Ocean	149,446	149,446	0
12	Kenilworth Borough	Union	142,169	0	142,169
13	Princeton Borough	Mercer	126,622	126,622	0
14	Linden City	Union	118,659	24,000	94,659
15	Kearny Town	Hudson	114,034	114,034	0
16	Hamilton Township	Mercer	102,810	102,810	0
17	Voorhees Township	Camden	88,736	87,864	872
18	Toms River Township	Ocean	79,900	69,404	10,496
19	Perth Amboy City	Middlesex	79,620	79,620	0
20	Bordentown Township	Burlington	78,805	78,805	0
TOP MUNICIPALITIES			4,009,718	3,367,279	642,439
NEW JERSEY			5,164,501	4,137,443	1,027,058
TOP AS % OF STATE			77.6%	81.4%	62.6%

Office Square Feet Authorized by Building Permits
January-August 2012

You are viewing an Archived Copy from the New Jersey State Library

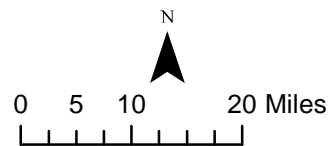


1. Edison
811,339 sq. ft.
MIDDLESEX, CO.
2. Newark
366,149 sq. ft.
ESSEX CO.
3. Clifton City
265,718 sq. ft.
PASSAIC CO.
4. Hanover Twp.
252,907 sq. ft.
MORRIS CO.

NJ Municipalities

Office Square Feet

- less than 50,000
- 50,000 to 249,999
- 250,000 to 811,339



New Jersey
Department of Community Affairs

MAP2 10/18/12

Table 8 CERTOFF 10/18/12

Office Square Feet Certified: New Jersey Counties, August 2012						
County	August			Year to Date		
	Total	New Construction	Additions	Total	New Construction	Additions
ATLANTIC	39,663	39,123	540	54,373	52,777	1,596
BERGEN	31,508	2,745	28,763	233,364	133,862	99,502
BURLINGTON	3,932	0	3,932	137,235	118,243	18,992
CAMDEN	0	0	0	11,113	10,355	758
CAPE MAY	297	297	0	13,057	13,056	1
CUMBERLAND	5,400	5,400	0	35,140	31,193	3,947
ESSEX	8,018	1,440	6,578	62,335	10,198	52,137
GLOUCESTER	0	0	0	75,942	25,783	50,159
HUDSON	0	0	0	25,356	25,355	1
HUNTERDON	1	0	1	72,817	70,916	1,901
MERCER	1,395	0	1,395	17,533	4,112	13,421
MIDDLESEX	63,900	63,900	0	333,198	299,342	33,856
MONMOUTH	8,832	8,832	0	95,275	83,458	11,817
MORRIS	8,650	8,650	0	102,214	75,729	26,485
OCEAN	6,225	6,225	0	129,932	83,667	46,265
PASSAIC	0	0	0	473,276	422,283	50,993
SALEM	6,355	6,355	0	21,338	21,338	0
SOMERSET	7,313	7,313	0	39,442	20,509	18,933
SUSSEX	8,390	0	8,390	19,014	8,624	10,390
UNION	9,001	9,001	0	26,637	10,581	16,056
WARREN	200	0	200	6,413	0	6,413
STATE BUILDINGS*	0	0	0	214,628	214,628	0
NEW JERSEY	209,080	159,281	49,799	2,199,632	1,736,009	463,623
NJ 2011 10/7/11	205,352	194,609	10,743	1,717,183	1,293,070	424,113

*State buildings refer to structures owned or constructed by the State or any of its instrumentalities. See Exhibit A, Summary of Building Permit and Certificate Terms, on page 2.

Table 9a RETSPACE 10/18/12

Retail Square Feet Authorized by Building Permits: New Jersey Counties, August 2012						
County	August			Year to Date		
	Total	New Construction	Additions	Total	New Construction	Additions
ATLANTIC	0	0	0	26,000	0	26,000
BERGEN	6,916	6,916	0	52,797	45,802	6,995
BURLINGTON	2,115	2,115	0	86,363	14,149	72,214
CAMDEN	0	0	0	65,081	13,535	51,546
CAPE MAY	384	0	384	480	0	480
CUMBERLAND	0	0	0	6,153	0	6,153
ESSEX	0	0	0	786	0	786
GLOUCESTER	0	0	0	24,280	24,279	1
HUDSON	0	0	0	437,486	15,241	422,245
HUNTERDON	0	0	0	14,838	14,838	0
MERCER	0	0	0	2,898	2,898	0
MIDDLESEX	435,478	427,000	8,478	456,336	445,761	10,575
MONMOUTH	105,280	103,255	2,025	135,343	130,114	5,229
MORRIS	0	0	0	11,484	10,399	1,085
OCEAN	2,990	0	2,990	137,844	81,124	56,720
PASSAIC	0	0	0	31,129	31,129	0
SALEM	0	0	0	25,968	24,200	1,768
SOMERSET	0	0	0	0	0	0
SUSSEX	0	0	0	30,093	30,093	0
UNION	27,615	27,615	0	35,502	33,198	2,304
WARREN	1	1	0	21,744	21,744	0
STATE BUILDINGS*	0	0	0	0	0	0
NEW JERSEY	580,779	566,902	13,877	1,602,605	938,504	664,101
NJ 2011 10/7/11	275,300	241,685	33,615	1,203,938	1,132,085	71,853

*State buildings refer to structures owned or constructed by the State or any of its instrumentalities. See Exhibit A, Summary of Building Permit and Certificate Terms, on page 2.

Table 9b RETMUN1 10/18/12

Retail Square Feet Authorized by Building Permits: New Jersey Top Municipalities, August 2012					
Rank	Municipality	County	Total	New Construction	Additions
1	North Brunswick Township	Middlesex	427,000	427,000	0
2	Oceanport Borough	Monmouth	83,295	83,295	0
3	Linden City	Union	27,615	27,615	0
4	Howell Township	Monmouth	19,960	19,960	0
5	Woodbridge Township	Middlesex	8,478	0	8,478
6	Carlstadt Borough	Bergen	6,916	6,916	0
7	Lakewood Township	Ocean	2,990	0	2,990
8	Mount Laurel Township	Burlington	2,115	2,115	0
9	Marlboro Township	Monmouth	2,025	0	2,025
10	West Cape May Borough	Cape May	384	0	384
11	Washington Township	Warren	1	1	0
12					
13					
14					
15					
16					
17					
18					
19					
20					
	TOP MUNICIPALITIES		580,779	566,902	13,877
	NEW JERSEY		580,779	566,902	13,877
	TOP AS % OF STATE		100.0%	100.0%	100.0%

Table 9c RETMUN2 10/18/12

Retail Square Feet Authorized by Building Permits: New Jersey Top Municipalities, January-August 2012					
Rank	Municipality	County	Total	New Construction	Additions
1	Kearny Town	Hudson	427,828	5,583	422,245
2	North Brunswick Township	Middlesex	427,000	427,000	0
3	Brick Township	Ocean	100,116	73,396	26,720
4	Oceanport Borough	Monmouth	83,295	83,295	0
5	Burlington Township	Burlington	80,972	12,033	68,939
6	Berlin Township	Camden	50,109	0	50,109
7	Howell Township	Monmouth	29,584	27,433	2,151
8	Woodbridge Township	Middlesex	29,336	18,761	10,575
9	Lyndhurst Township	Bergen	28,890	28,890	0
10	Linden City	Union	27,615	27,615	0
11	Toms River Township	Ocean	26,400	0	26,400
12	Hamilton Township	Atlantic	26,000	0	26,000
13	Deptford Township	Gloucester	24,276	24,276	0
14	Quinton Township	Salem	24,200	24,200	0
15	Washington Township	Warren	18,543	18,543	0
16	Raritan Township	Hunterdon	14,838	14,838	0
17	Hazlet Township	Monmouth	14,838	14,838	0
18	Haledon Borough	Passaic	14,763	14,763	0
19	Sparta Township	Sussex	14,045	14,045	0
20	Hampton Township	Sussex	12,651	12,651	0
TOP MUNICIPALITIES			1,475,299	842,160	633,139
NEW JERSEY			1,602,605	938,504	664,101
TOP AS % OF STATE			92.1%	89.7%	95.3%

Retail Square Feet Authorized by Building Permits January-August 2012

You Are Viewing an Archived Copy from the New Jersey State Library

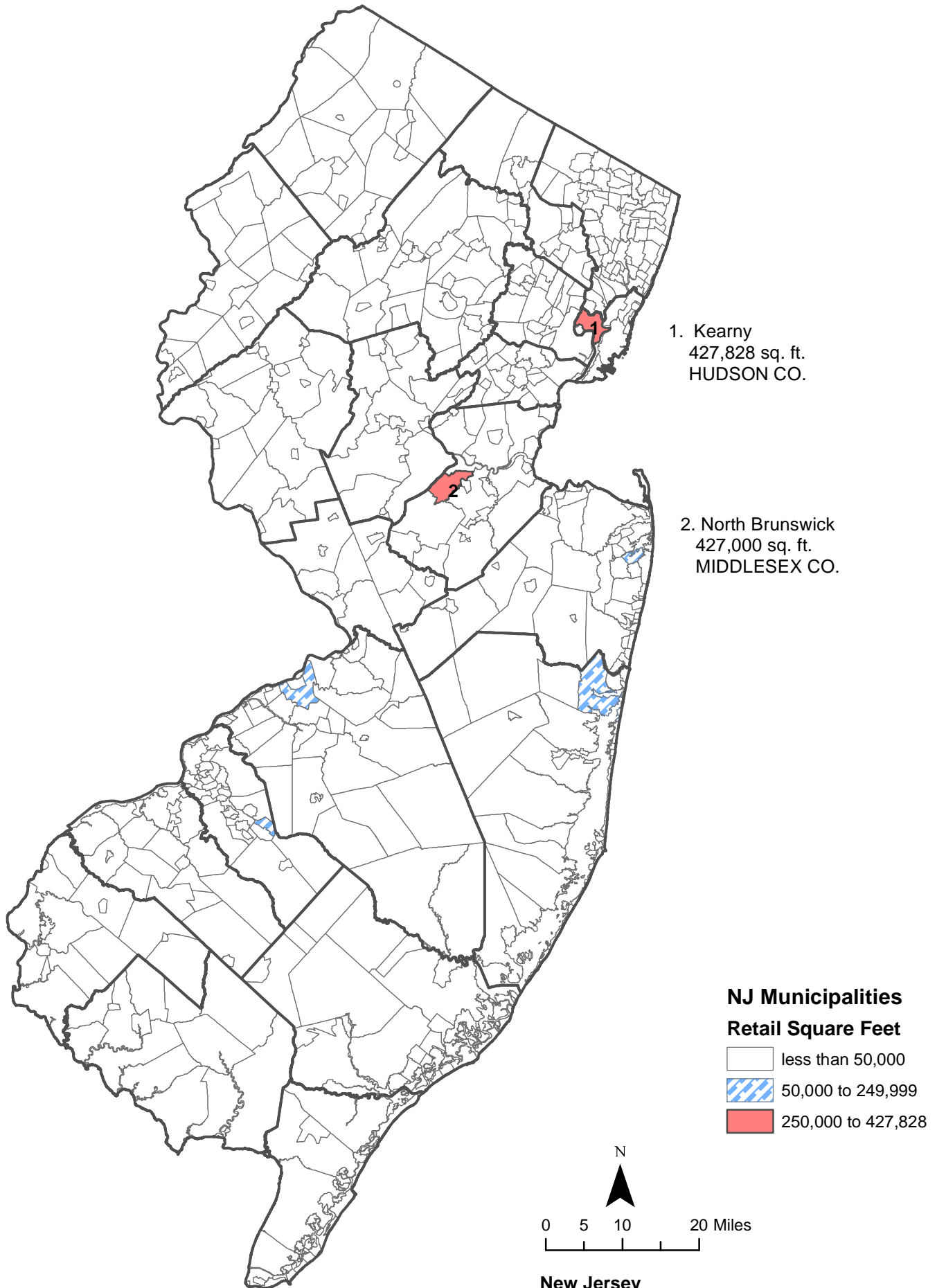


Table 10 CERTRET 10/18/12

Retail Square Feet Certified: New Jersey Counties, August 2012						
County	August			Year to Date		
	Total	New Construction	Additions	Total	New Construction	Additions
ATLANTIC	0	0	0	45,718	45,718	0
BERGEN	20,992	0	20,992	246,405	246,405	0
BURLINGTON	0	0	0	38,233	38,233	0
CAMDEN	0	0	0	0	0	0
CAPE MAY	0	0	0	2,604	1,884	720
CUMBERLAND	0	0	0	0	0	0
ESSEX	0	0	0	7,172	7,172	0
GLOUCESTER	0	0	0	229,186	224,434	4,752
HUDSON	0	0	0	0	0	0
HUNTERDON	0	0	0	26,838	26,838	0
MERCER	0	0	0	19,933	19,933	0
MIDDLESEX	0	0	0	30,005	30,005	0
MONMOUTH	9,066	0	9,066	13,593	12,993	600
MORRIS	0	0	0	23,377	19,273	4,104
OCEAN	0	0	0	58,226	58,226	0
PASSAIC	0	0	0	1,498	1,050	448
SALEM	0	0	0	0	0	0
SOMERSET	17,125	0	17,125	17,125	17,125	0
SUSSEX	0	0	0	14,208	8,384	5,824
UNION	0	0	0	11,330	3,086	8,244
WARREN	0	0	0	5,589	5,589	0
STATE BUILDINGS*	0	0	0	0	0	0
NEW JERSEY	47,183	0	47,183	791,040	766,348	24,692
NJ 2011 10/7/11	65,179	63,103	2,076	905,077	839,968	65,109

*State buildings refer to structures owned or constructed by the State or any of its instrumentalities. See Exhibit A, Summary of Building Permit and Certificate Terms, on page 2.

Table 11a WORK 10/18/12

Dollar Amount of Construction Authorized by Building Permits: New Jersey Counties, August 2012						
County	Augusts			Year to Date		
	Total	Residential	Nonresidential	Total	Residential	Nonresidential
ATLANTIC	\$20,513,138	\$13,724,831	\$6,788,307	\$215,059,556	\$89,025,259	\$126,034,297
BERGEN	91,400,337	64,358,581	27,041,756	915,698,482	565,122,409	350,576,073
BURLINGTON	47,397,413	23,803,157	23,594,256	339,256,920	125,316,505	213,940,415
CAMDEN	35,896,470	11,302,491	24,593,979	265,571,766	110,975,376	154,596,390
CAPE MAY	20,994,115	13,840,606	7,153,509	148,520,070	116,907,718	31,612,352
CUMBERLAND	6,526,401	3,387,316	3,139,085	66,050,875	18,201,986	47,848,889
ESSEX	39,634,320	27,471,781	12,162,539	558,584,508	282,453,809	276,130,699
GLOUCESTER	26,367,243	12,460,968	13,906,275	191,147,020	75,165,349	115,981,671
HUDSON	47,969,661	32,627,752	15,341,909	576,663,323	364,199,825	212,463,498
HUNTERDON	8,640,104	5,378,062	3,262,042	94,683,004	48,336,181	46,346,823
MERCER	42,339,787	13,043,594	29,296,193	437,448,734	125,879,544	311,569,190
MIDDLESEX	131,966,136	37,859,765	94,106,371	677,022,839	221,292,813	455,730,026
MONMOUTH	68,272,783	45,233,352	23,039,431	516,693,490	322,865,175	193,828,315
MORRIS	52,148,950	30,133,710	22,015,240	519,803,178	220,692,523	299,110,655
OCEAN	48,770,304	33,952,700	14,817,604	485,430,975	300,042,030	185,388,945
PASSAIC	34,244,992	17,951,097	16,293,895	213,047,209	99,868,638	113,178,571
SALEM	7,900,172	2,618,593	5,281,579	34,243,264	10,600,328	23,642,936
SOMERSET	44,204,114	21,164,660	23,039,454	375,779,635	189,954,607	185,825,028
SUSSEX	11,493,249	4,879,957	6,613,292	75,505,354	39,892,912	35,612,442
UNION	48,354,583	21,388,685	26,965,898	464,819,638	189,467,747	275,351,891
WARREN	6,690,265	2,577,023	4,113,242	52,256,717	19,027,714	33,229,003
STATE BUILDINGS*	23,713,808	3,000	23,710,808	240,350,879	9,723,931	230,626,948
NEW JERSEY	\$865,438,345	\$439,161,681	\$426,276,664	\$7,463,637,436	\$3,545,012,379	\$3,918,625,057
NJ 2011 10/711	\$987,346,488	\$437,413,673	\$549,932,815	\$7,338,954,063	\$3,007,769,046	\$4,331,185,017

*State buildings refer to structures owned or constructed by the State or any of its instrumentalities. See Exhibit A, Summary of Building Permit and Certificate Terms, on page 2.

Table 11b WORK1 10/18/12

Dollar Amount Construction Authorized by Building Permits: Top Municipalities, August 2012					
Rank	Municipality	County	Total	Residential	Nonresidential
1	Edison Township	Middlesex	\$31,262,375	\$4,711,748	\$26,550,627
2	Sayreville Borough	Middlesex	25,444,143	4,145,993	21,298,150
3	Hoboken City	Hudson	23,694,102	21,466,353	2,227,749
4	North Brunswick	Middlesex	13,748,292	1,488,839	12,259,453
5	Clifton City	Passaic	11,883,195	6,318,877	5,564,318
6	Camden City	Camden	11,882,882	1,208,378	10,674,504
7	Howell Township	Monmouth	11,503,143	9,025,589	2,477,554
8	Monroe Township	Middlesex	10,805,588	5,230,820	5,574,768
9	Woodbridge Township	Middlesex	10,739,236	5,184,567	5,554,669
10	Bernards Township	Somerset	9,197,227	3,296,117	5,901,110
11	Florence Township	Burlington	8,749,103	681,313	8,067,790
12	Kenilworth Borough	Union	8,719,581	483,007	8,236,574
13	Cherry Hill Township	Camden	8,679,088	2,083,956	6,595,132
14	Lakewood Township	Ocean	8,549,774	4,155,831	4,393,943
15	Jersey City	Hudson	8,387,532	3,065,693	5,321,839
16	West Windsor Township	Mercer	8,383,740	1,977,203	6,406,537
17	Holmdel Township	Monmouth	8,321,315	2,308,465	6,012,850
18	Willingboro Township	Monmouth	8,321,315	2,308,465	6,012,850
19	West Deptford Township	Burlington	8,225,534	7,479,644	745,890
20	Wayne Township	Gloucester	7,914,131	297,546	7,616,585
TOP MUNICIPALITIES			236,497,165	87,940,181	78,260,922
NEW JERSEY			\$865,438,345	\$439,161,681	\$426,276,664
TOP AS % OF STATE			27.3%	20.0%	18.4%

Table 11c WORK2 10/18/12

Dollar Amount Construction Authorized by Building Permits: Top Municipalities, January-August 2012					
Rank	Municipality	County	Total	Residential	Nonresidential
1	Jersey City	Hudson	\$186,424,427	\$107,798,306	\$78,626,121
2	Newark City	Essex	179,607,440	76,519,774	103,087,666
3	Edison Township	Middlesex	108,239,911	22,740,686	85,499,225
4	Cliffside Park Borough	Bergen	100,152,709	99,563,152	589,557
5	Brick Township	Ocean	98,157,258	34,764,503	63,392,755
6	Franklin Township	Somerset	94,879,811	53,706,626	41,173,185
7	Weehawken Township	Hudson	88,211,611	78,579,319	9,632,292
8	Lawrence Township	Mercer	86,787,760	7,077,231	79,710,529
9	Parsippany-Troy Hill	Morris	85,084,360	11,973,977	73,110,383
10	Plainsboro Township	Middlesex	84,170,389	4,484,024	79,686,365
11	Woodbridge Township	Middlesex	78,018,298	24,310,225	53,708,073
12	Atlantic City	Atlantic	77,811,612	4,340,847	73,470,765
13	Cherry Hill Township	Camden	75,331,935	41,080,786	34,251,149
14	Lakewood Township	Ocean	73,159,175	47,286,953	25,872,222
15	Hoboken City	Hudson	72,000,303	51,570,681	20,429,622
16	Hanover Township	Morris	71,918,382	15,199,710	56,718,672
17	Fort Lee Borough	Bergen	71,541,398	61,157,664	10,383,734
18	Bridgewater Township	Somerset	70,549,162	15,943,600	54,605,562
19	Paramus Borough	Bergen	69,175,934	12,933,050	56,242,884
20	West New York Town	Hudson	68,335,013	64,873,008	3,462,005
	TOP MUNICIPALITIES		1,839,556,888	835,904,122	1,003,652,766
	NEW JERSEY		\$7,463,637,436	\$3,545,012,379	\$3,918,625,057
	TOP AS % OF STATE		24.6%	23.6%	25.6%

Estimated Dollar Amount of Construction
Authorized by Building Permits, January-August 2012

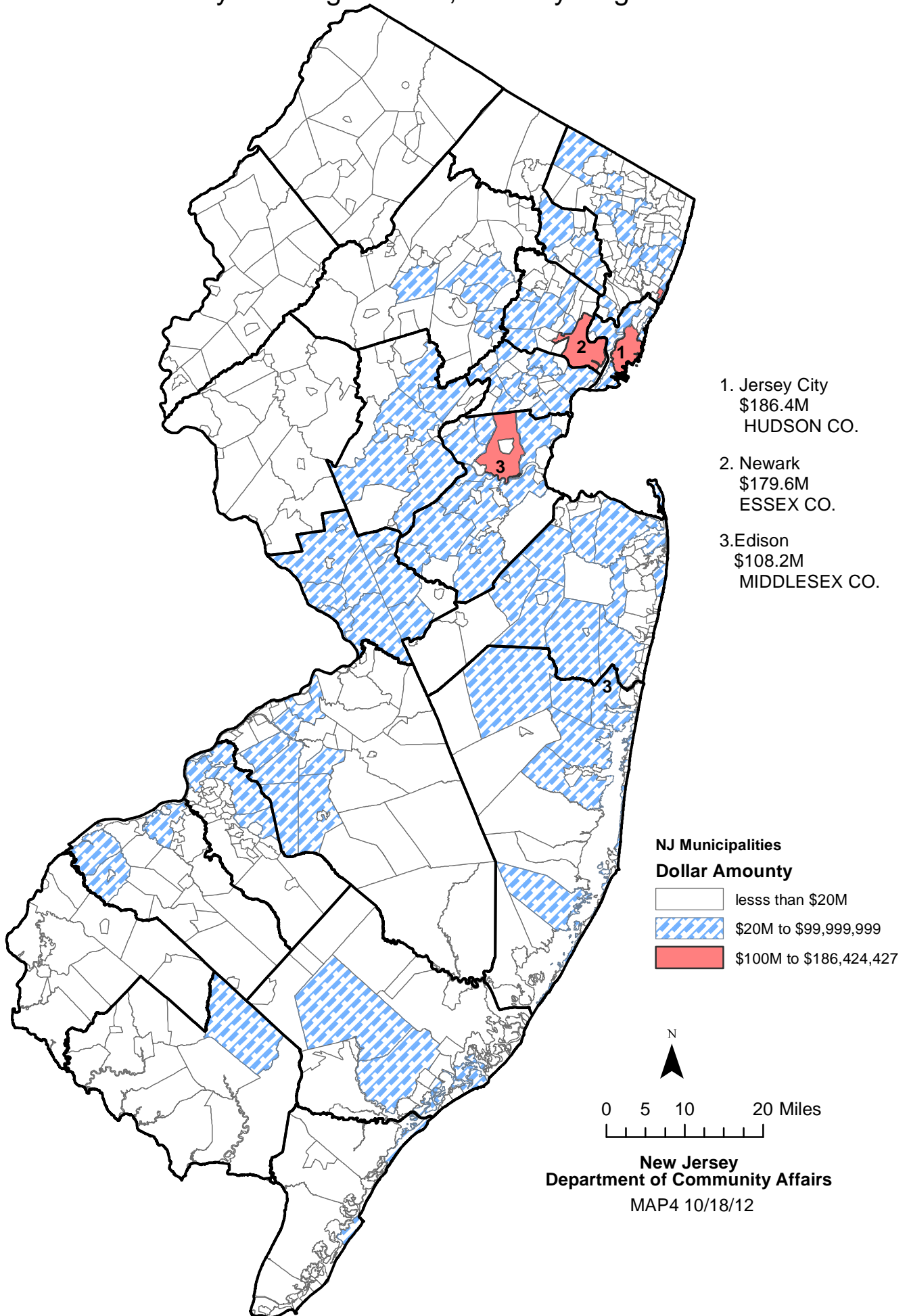


Table 12 USEGROUP 10/18/12

Dollar Amount of Construction Authorized by Building Permits by Use Group: New Jersey, August 2012						
Use Group	August			Year to Date		
	Permits	Construction Costs	Square Feet	Permits	Construction Costs	Square Feet
RESIDENTIAL	30,324	\$439,161,681	3,199,537	218,514	\$3,545,012,379	27,031,012
1 & 2 Family	28,242	365,963,795	2,376,866	203,771	2,637,797,875	18,630,044
Multifamily	2,082	73,197,886	822,671	14,743	907,214,504	8,400,968
NONRESIDENTIAL	6,850	\$426,276,664	2,381,361	53,485	3,918,625,057	14,693,754
Hotels, Motels, Guest Houses	64	9,529,196	11,625	680	45,045,651	127,153
Assembly	494	28,058,474	37,456	4,251	394,428,240	1,049,284
Business	2,451	149,245,356	986,944	19,393	1,660,618,615	5,164,501
Educational	385	76,965,747	3,416	2,126	440,350,500	579,329
Hazardous Use	8	234,100		43	2,726,240	1
Industrial	64	20,214,385	80,157	538	102,642,206	325,580
Institutional	88	12,974,174	670	674	198,699,347	962,134
Retail	444	36,363,937	580,779	3,659	350,300,935	1,602,605
Storage	175	24,095,665	553,466	1,413	231,303,713	3,076,292
Signs, Fences, Miscellaneous	2,677	68,595,630	126,848	20,708	492,509,610	1,806,875
NEW JERSEY	37,174	\$865,438,345	5,580,898	271,999	\$7,463,637,436	41,724,766
NJ 2011 10/7/11	33,508	\$987,346,488	4,627,808	248,870	\$7,338,954,063	33,679,017

Table 13 PARTIC 10/18/12

Dollar Amount of Construction Authorized by Building Permits: New Jersey, August 2012					
Month	Number of Municipalities Reporting	Total	New Construction	Additions	Alterations
JANUARY	566	\$800,932,469	\$278,703,557	\$55,876,826	\$466,352,086
FEBRUARY	565	713,728,649	236,609,879	69,821,604	407,297,166
MARCH	565	965,141,990	332,954,481	101,494,962	530,692,547
APRIL	566	940,487,786	261,023,385	130,460,632	549,003,769
MAY	564	917,133,391	217,716,867	111,868,368	587,548,156
JUNE	564	1,155,060,189	380,377,852	122,418,041	652,264,296
JULY	565	1,105,714,617	395,858,420	97,828,964	612,027,233
AUGUST	563	865,438,345	240,728,640	74,265,564	550,444,141
SEPTEMBER					
OCTOBER					
NOVEMBER					
DECEMBER					
TOTAL		\$7,463,637,436	\$2,343,973,081	\$764,034,961	\$4,355,629,394
YEAR-TO-DATE TOTAL 2011 10/7/11		\$7,338,954,063	\$2,639,728,607	\$645,785,805	\$4,053,439,651

NOTE:

Users of the monthly *CONSTRUCTION REPORTER* may notice that year-to-date figures in a particular issue may not be obtained by merely summing the monthly totals that appear in previous issues. This is because the construction data compiled by the New Jersey Department of Community Affairs are continuously updated. Monthly construction reports submitted too late to make the January issue of the *CONSTRUCTION REPORTER*, for example, are included in the year-to-date totals that appear in the February issue.

MUNICIPAL SUMMARY DATA, August 2012

AREA NAME	AUTHORIZED	AUTHORIZED	HOUSING	OFFICE SPACE	RETAIL SPACE	RESI-	NONRESI-
	HOUSING	HOUSING UNITS	UNITS	AUTHORIZED	AUTHORIZED	DENTIAL	DENTIAL
	UNITS	(CENSUS	CERTIFIED	BY BUILDING	BY BUILDING	(\$ AMOUNT)	(\$ AMOUNT)
		DEFINITIONS)		PERMITS	PERMITS		
Atlantic County	48	56	36	14,871	0	\$13,724,831	\$6,788,307
Bergen County	49	112	52	68	6,916	64,358,581	27,041,756
Burlington County	66	77	24	9,000	2,115	23,803,157	23,594,256
Camden County	6	42	54	26,772	0	11,302,491	24,593,979
Cape May County	41	40	49	20,375	384	13,840,606	7,153,509
Cumberland County	15	20	11	640	0	3,387,316	3,139,085
Essex County	32	59	21	559	0	27,471,781	12,162,539
Gloucester County	67	93	50	2,128	0	12,460,968	13,906,275
Hudson County	152	106	334	0	0	32,627,752	15,341,909
Hunterdon County	4	11	8	1	0	5,378,062	3,262,042
Mercer County	7	22	31	154,979	0	13,043,594	29,296,193
Middlesex County	168	113	121	674,836	435,478	37,859,765	94,106,371
Monmouth County	142	154	120	3,726	105,280	45,233,352	23,039,431
Morris County	39	57	39	6,992	0	30,133,710	22,015,240
Ocean County	94	84	125	50,360	2,990	33,952,700	14,817,604
Passaic County	66	70	32	16,518	0	17,951,097	16,293,895
Salem County	12	8	9	0	0	2,618,593	5,281,579
Somerset County	23	138	16	1,360	0	21,164,660	23,039,454
Sussex County	21	16	4	1,359	0	4,879,957	6,613,292
Union County	28	43	25	2,400	27,615	21,388,685	26,965,898
Warren County	1	11	9	0	1	2,577,023	4,113,242
State Buildings	0		0	0	0	3,000	23,710,808
New Jersey	1,081	1,332	1,170	986,944	580,779	\$439,161,681	\$426,276,664
NEW JERSEY 2011	11,882		10,352	4,915,544	1,680,445	\$4,832,350,928	\$6,107,458,821
NEW JERSEY 2010	11,885	13,535	11,625	5,496,579	2,192,231	4,879,205,601	4,889,436,742
NEW JERSEY 2009	11,145	10,827	14,460	4,253,888	2,248,935	4,506,768,272	5,010,957,124
NEW JERSEY 2008	16,388	18,369	18,699	7,962,998	5,557,101	5,915,342,801	8,029,191,777
NEW JERSEY 2007	25,948	25,389	23,138	9,569,501	5,423,889	8,047,734,107	7,308,838,713
NEW JERSEY 2006	32,050	34,323	28,564	11,113,555	5,186,662	8,320,885,749	7,354,222,206
NEW JERSEY 2005	39,688	38,375	31,047	11,038,132	5,965,258	9,127,194,950	6,270,312,197
NEW JERSEY 2004	39,254	35,936	27,950	12,219,068	4,961,257	7,972,659,530	6,301,672,320
NEW JERSEY 2003	35,171	32,984	26,932	9,744,146	6,038,428	6,674,318,674	5,474,429,133
NEW JERSEY 2002	34,589	30,411	29,174	9,261,054	7,560,913	6,210,486,721	5,869,455,378
NEW JERSEY 2001	35,680	28,267	30,054	19,134,533	7,244,833	5,756,546,492	6,250,910,138
NEW JERSEY 2000	38,065	34,585	29,705	15,531,039	6,063,412	5,575,603,576	5,812,079,758
NEW JERSEY 1999	37,536	31,976	28,109	13,237,891	6,226,471	5,377,163,097	5,207,004,433
NEW JERSEY 1998	35,676	31,345	28,008	12,703,824	7,921,892	4,812,845,052	4,583,910,465
NEW JERSEY 1997	30,017	28,018	34,670	10,490,171	5,688,955	4,083,041,927	4,263,491,187
Atlantic County							
Absecon City	0	0	0	0	0	179,548	31,330
Atlantic City	0	3 *	2	0	0	451,182	2,059,359
Brigantine City	3	4	2	0	0	1,838,709	46,450
Buena Borough	1	0 *	0	0	0	72,450	31,575
Buena Vista Township	1	1	0	0	0	89,630	389,950
Corbin City	0	0 *	0	0	0	0	9,000
Egg Harbor City	0	1 *	0	0	0	26,199	92,870
Egg Harbor Township	26	19	7	4,794	0	4,511,830	1,498,007
Estell Manor City	0	0	0	0	0	47,820	1,200
Folsom Borough	1	0	0	0	0	31,377	13,554
Galloway Township	6	6	3	2,880	0	1,478,302	77,450
Hamilton Township	5	5 *	9	0	0	1,181,575	877,663
Hammonton Township	0	0	0	7,197	0	194,916	728,962
Linwood City	0	0 *	0	0	0	421,002	467,900

MUNICIPAL SUMMARY DATA, August 2012

AREA NAME	AUTHORIZED	AUTHORIZED		OFFICE SPACE	RETAIL SPACE		
	HOUSING	HOUSING UNITS	HOUSING	AUTHORIZED	AUTHORIZED	RESI-	NONRESI-
	UNITS	(CENSUS	UNITS	BY BUILDING	BY BUILDING	DENTIAL	DENTIAL
		DEFINITIONS)	CERTIFIED	PERMITS	PERMITS	(\$ AMOUNT)	(\$ AMOUNT)
Longport City	3	2	6	0	0	1,138,707	575
Margate City	2	3 *	6	0	0	1,053,345	20,000
Mullica City	0	1 *	0	0	0	54,874	115,291
Northfield City	0	1 *	0	0	0	207,701	100,550
Pleasantville City	0	9 *	1	0	0	127,340	191,796
Port Republic City	0	0	0	0	0	13,000	0
Somers Point City	0	1 *	0	0	0	191,881	30,525
Ventnor City	0	0 *	0	0	0	361,120	2,700
Weymouth Township	0	0 *	0	0	0	52,323	1,600
Bergen County							
Allendale Borough	0	0	0	0	0	1,462,882	386,051
Alpine Borough	1	1	0	0	0	358,019	18,462
Bergenfield Borough	0	0	0	0	0	402,272	2,773,363
Bogota Borough	0	1 *	0	0	0	159,459	89,300
Carlstadt Borough	0	3 *	0	0	6,916	151,695	891,360
Cliffside Park Borough	0	2 *	3	0	0	594,246	230,600
Closter Borough	1	1	1	0	0	894,739	127,372
Cresskill Borough	1	1 *	1	0	0	618,917	32,186
Demarest Borough	2	2	0	0	0	2,278,386	49,000
Dumont Borough	0	0 *	0	0	0	594,736	0
Elmwood Park Borough	0	15 *	2	0	0	298,134	185,800
East Rutherford Borough	1	1	0	0	0	447,320	82,047
Edgewater Borough	2	2	2	0	0	5,554,772	398,224
Emerson Borough	0	7 *	0	0	0	241,933	363,367
Englewood City	1	1	0	0	0	5,653,909	1,141,613
Englewood Cliffs Borough	3	3	0	0	0	2,571,539	159,700
Fair Lawn Borough	0	0 *	0	0	0	1,253,666	978,814
Fairview Borough	2	2	0	0	0	194,761	1,187,625
Fort Lee Borough	3	3	4	0	0	1,805,546	1,110,753
Franklin Lakes Borough	1	1	0	0	0	1,469,408	223,502
Garfield City	0	5 *	0	0	0	483,095	1,047,130
Glen Rock Borough	0	2 *	0	0	0	1,208,220	200,725
Hackensack City	0	0	0	0	0	570,491	1,131,299
Harrington Park Borough	0	1 *	0	0	0	120,724	6,594
Hasbrouck Heights Borough	3	3	0	0	0	954,461	274,850
Haworth Borough	0	0	0	0	0	172,540	0
Hillsdale Borough	1	1	0	0	0	1,108,074	33,100
Ho-Ho-Kus Borough	0	1 *	0	0	0	501,496	182,750
Leonia Borough	0	0 *	0	0	0	223,794	249,362
Little Ferry Borough	0	0	0	0	0	131,239	1,100
Lodi Borough	0	0	0	0	0	133,320	121,850
Lyndhurst Township	0	0	0	0	0	466,161	3,161,022
Mahwah Township	0	0	0	0	0	1,635,558	224,300
Maywood Borough	0	0	8	0	0	418,240	312,449
Midland Park Borough	0	0	0	68	0	185,255	690,135
Montvale Borough	0	0	1	0	0	258,568	382,951
Moonachie Borough	0	0	0	0	0	50,497	72,900
New Milford Borough	1	2 *	0	0	0	431,755	15,400
North Arlington Borough	0	0	0	0	0	265,242	457,816
Northvale Borough	0	7 *	0	0	0	59,359	33,700
Norwood Borough	0	1 *	0	0	0	31,375	0
Oakland Borough	0	0	0	0	0	1,010,801	97,384
Old Tappan Borough	1	1	2	0	0	1,623,785	318,514
Oradell Borough	1	1	1	0	0	646,424	19,500
Palisades Park Borough	4	4	13	0	0	1,152,194	345,757

MUNICIPAL SUMMARY DATA, August 2012

AREA NAME	AUTHORIZED	AUTHORIZED	HOUSING	OFFICE SPACE	RETAIL SPACE	RESI-	NONRESI-
	HOUSING	HOUSING UNITS	UNITS	AUTHORIZED	AUTHORIZED	DENTIAL	DENTIAL
	UNITS	(CENSUS	CERTIFIED	BY BUILDING	BY BUILDING	(\$ AMOUNT)	(\$ AMOUNT)
		DEFINITIONS)		PERMITS	PERMITS		
Paramus Borough	1	1	1	0	0	913,983	1,705,339
Park Ridge Borough	0	6 *	0	0	0	251,745	16,300
Ramsey Borough	1	2 *	2	0	0	694,494	528,610
Ridgefield Borough	1	1	0	0	0	677,478	445,548
Ridgefield Park Village	0	1 *	0	0	0	277,979	471,200
Ridgewood Village	1	1 *	1	0	0	3,474,605	315,715
River Edge Borough	0	1 *	0	0	0	489,621	42,198
River Vale Township	0	0	1	0	0	202,353	68,400
Rochelle Park Township	0	0	0	0	0	524,268	102,899
Rockleigh Borough	0	0 *	0	0	0	0	273,400
Rutherford Borough	0	0	4	0	0	1,005,929	638,962
Saddle Brook Township	0	6 *	0	0	0	456,864	53,986
Saddle River Borough	0	0	0	0	0	3,263,194	122,040
South Hackensack Twp	0	0	0	0	0	25,320	235,250
Teaneck Township	0	0 *	1	0	0	1,803,078	537,032
Tenafly Borough	0	0	3	0	0	1,828,964	91,320
Teterboro Borough	0	0	0	0	0	0	40,600
Upper Saddle River Borough	0	1	0	0	0	1,290,027	5,000
Waldwick Borough	0	2 *	0	0	0	510,830	46,600
Wallington Borough	1	0	0	0	0	397,799	15,100
Washington Township	0	1 *	0	0	0	627,968	11,250
Westwood Borough	1	1	0	0	0	481,296	183,685
Woodcliff Lake Borough	12	12	0	0	0	376,269	465,550
Wood-Ridge Borough	1	0 *	0	0	0	806,151	68,300
Wyckoff Township	1	1	1	0	0	3,129,359	747,745
Burlington County							
Bass River Township	0	0 *	0	0	0	39,430	1,000
Beverly City	0	0 *	0	0	0	7,221	400
Bordentown City	0	0	0	0	0	86,675	10,000
Bordentown Township	4	4	1	0	0	1,133,970	202,300
Burlington City	0	0	0	0	0	152,690	179,264
Burlington Township	1	1	0	0	0	501,303	757,145
Chesterfield Township	2	2	1	0	0	672,136	38,190
Cinnaminson Township	5	21 *	0	0	0	2,827,353	737,384
Delanco Township	0	5 *	0	0	0	100,177	25,101
Delran Township	0	0 *	0	0	0	256,219	128,425
Eastampton Township	0	0	3	0	0	30,340	1,600
Edgewater Park Township	0	0 *	0	0	0	156,869	0
Evesham Township	0	7 *	3	0	0	91,563	1,143,711
Fieldsboro Borough	No report	0	0	No report	No report	No report	No report
Florence Township	2	2	4	0	0	681,313	8,067,790
Hainesport Township	1	1	0	0	0	245,188	275,315
Lumberton Township	1	1	0	0	0	490,719	242,280
Mansfield Township	0	2 *	2	0	0	473,049	1,869,541
Maple Shade Borough	1	1	0	0	0	728,962	28,844
Medford Township	5	5	3	0	0	1,734,844	417,364
Medford Lakes Borough	0	1 *	1	0	0	57,962	51,300
Moorestown Township	2	2	0	0	0	1,301,324	751,505
Mount Holly Township	0	0	0	0	0	295,172	92,540
Mount Laurel Township	7	0	4	9,000	2,115	1,453,972	2,366,937
New Hanover Township	0	0	0	0	0	36,435	42,600
North Hanover Township	0	1 *	0	0	0	66,291	4,100
Palmyra Borough	0	0 *	0	0	0	103,330	167,586
Pemberton Borough	0	0	0	0	0	10,250	295
Pemberton Township	7	2 *	1	0	0	1,266,327	349,379

MUNICIPAL SUMMARY DATA, August 2012

AREA NAME	AUTHORIZED	AUTHORIZED	HOUSING UNITS CERTIFIED	OFFICE SPACE	RETAIL SPACE	RESI-DENTIAL (\$ AMOUNT)	NONRESI-DENTIAL (\$ AMOUNT)
	HOUSING UNITS	HOUSING UNITS (CENSUS DEFINITIONS)		AUTHORIZED BY BUILDING PERMITS	AUTHORIZED BY BUILDING PERMITS		
Riverside Township	0	0 *	0	0	0	181,080	591,260
Riverton Borough	0	0 *	0	0	0	185,849	57,850
Shamong Township	0	1 *	0	0	0	26,708	0
Southampton Township	0	1 *	1	0	0	370,303	105,300
Springfield Township	0	0 *	0	0	0	141,293	223,263
Tabernacle Township	0	1 *	0	0	0	193,540	116,664
Washington Township	1	1	0	0	0	49,919	4,000
Westampton Township	0	0	0	0	0	161,737	3,793,633
Willingboro Township	27	14 *	0	0	0	7,479,644	745,890
Woodland Township	0	1 *	0	0	0	12,000	500
Wrightstown Borough	0	0 *	0	0	0	0	4,000
Camden County							
Audubon Borough	0	0	0	0	0	100,961	45,604
Audubon Park Borough	0	0 *	0	0	0	1,385	0
Barrington Borough	0	0	0	0	0	130,600	2,200
Bellmawr Borough	0	0	0	0	0	372,959	0
Berlin Borough	0	1 *	0	0	0	200,042	180,300
Berlin Township	1	1	1	18,700	0	141,738	636,652
Brooklawn Borough	0	0	0	0	0	84,042	188,000
Camden City	0	0	0	0	0	1,208,378	10,674,504
Cherry Hill Township	0	0	1	160	0	2,083,956	6,595,132
Chesilhurst Borough	0	0 *	1	0	0	0	600
Clementon Borough	0	0 *	0	0	0	46,942	15,800
Collingswood Borough	0	0 *	0	0	0	334,711	111,371
Gibbsboro Borough	0	0 *	0	0	0	14,600	5,860
Gloucester City	0	0	0	0	0	116,995	87,507
Gloucester Township	0	0 *	0	0	0	793,936	866,909
Haddon Township	0	6 *	0	0	0	383,499	173,925
Haddonfield Borough	2	1 *	1	7,912	0	911,933	92,175
Haddon Heights Borough	0	1 *	0	0	0	341,941	3,300
Hi-nella Borough	0	0 *	0	0	0	0	4,000
Laurel Springs Borough	0	0 *	0	0	0	26,710	31,200
Lawnside Borough	0	0	0	0	0	24,257	150,300
Lindenwold Borough	0	8 *	0	0	0	70,979	810,174
Magnolia Borough	0	1 *	0	0	0	45,164	0
Merchantville Borough	0	0 *	0	0	0	85,377	0
Mount Ephraim Borough	0	0	0	0	0	45,225	43,354
Oaklyn Borough	0	0	0	0	0	128,558	2,000
Pennsauken Township	0	0	0	0	0	493,572	2,911,760
Pine Hill Borough	0	20 *	8	0	0	74,379	4,650
Pine Valley Borough	0	0 *	0	0	0	0	0
Runnemede Borough	0	0	0	0	0	513,442	2,279
Somerdale Borough	0	0	0	0	0	109,236	95,460
Stratford Borough	0	0	0	0	0	81,309	2,000
Tavistock Borough	0	0 0	0	0	0	0	0
Voorhees Township	0	0 *	40	0	0	635,286	725,618
Waterford Township	3	3	2	0	0	639,662	26,860
Winslow Township	0	0	0	0	0	1,043,427	104,485
Woodlynne Borough	0	0	0	0	0	17,290	0
Cape May County							
Avalon Borough	7	7	6	0	0	3,686,692	140,660
Cape May City	0	0	0	0	0	501,635	126,814
Cape May Point Borough	0	0	0	0	0	20,387	1,200
Dennis Township	1	1	0	0	0	477,754	91,532
Lower Township	1	2 *	0	0	0	812,822	124,685

MUNICIPAL SUMMARY DATA, August 2012

AREA NAME	AUTHORIZED	AUTHORIZED	HOUSING	OFFICE SPACE	RETAIL SPACE	RESI-	NONRESI-
	HOUSING	HOUSING UNITS	UNITS	AUTHORIZED	AUTHORIZED	DENTIAL	DENTIAL
	UNITS	(CENSUS	CERTIFIED	BY BUILDING	BY BUILDING	(\$ AMOUNT)	(\$ AMOUNT)
		DEFINITIONS)		PERMITS	PERMITS		
Middle Township	9	9	8	20,375	0	1,265,831	2,203,621
North Wildwood City	5	5	2	0	0	1,122,990	127,500
Ocean City	5	5	21	0	0	2,085,428	467,800
Sea Isle City	2	2	8	0	0	536,469	8,670
Stone Harbor Borough	3	2	2	0	0	1,449,402	3,462,508
Upper Township	4	3	0	0	0	903,686	301,187
West Cape May Borough	0	0 *	0	0	384	13,725	78,500
West Wildwood Borough	0	0	0	0	0	6,302	1,250
Wildwood City	0	0	0	0	0	103,403	9,282
Wildwood Crest Borough	4	4	1	0	0	844,905	5,300
Woodbine Borough	0	0	1	0	0	9,175	3,000
Cumberland County							
Bridgeton City	0	2 *	0	0	0	209,859	762,800
Commercial Township	1	1	0	0	0	147,400	0
Deerfield Township	0	1 *	0	0	0	850	9,000
Downe Township	3	3	0	0	0	236,250	2,866
Fairfield Township	0	0	0	0	0	0	28,200
Greenwich Township	0	0 *	0	0	0	0	28,500
Hopewell Township	0	1 *	0	0	0	14,649	123,860
Lawrence Township	0	0	0	0	0	269,855	0
Maurice River Township	0	1 *	0	0	0	52,975	2,000
Millville City	1	1	3	0	0	436,316	310,563
Shiloh Borough	0	0 *	0	0	0	6,819	0
Stow Creek Township	0	0	0	0	0	10,390	12,750
Upper Deerfield Township	0	2 *	1	0	0	29,235	2,040
Vineland City	10	8 *	7	640	0	1,972,718	1,856,506
Essex County							
Belleville Town	0	0	0	0	0	804,323	119,170
Bloomfield Township	0	0	0	0	0	210,465	0
Caldwell Township	0	0 *	0	0	0	279,315	54,483
Cedar Grove Township	0	6 *	1	0	0	296,574	105,286
East Orange City	0	5	0	0	0	1,065,902	589,925
Essex Fells Township	0	1 *	8	0	0	359,045	0
Fairfield Township	0	0 *	0	0	0	17,465	53,500
Glen Ridge Borough	2	1	0	0	0	601,642	0
Irvington Township	0	0	3	559	0	519,475	312,450
Livingston Township	0	1	2	0	0	2,526,905	3,713,053
Maplewood Township	0	1 *	0	0	0	790,198	151,875
Millburn Township	6	6	3	0	0	4,278,489	1,360,595
Montclair Township	0	1 *	0	0	0	1,950,579	566,365
Newark City	1	2	0	0	0	2,128,152	3,788,122
North Caldwell Borough	13	2 *	0	0	0	3,279,600	90,735
Nutley Township	0	2 *	1	0	0	1,098,219	476,055
City of Orange Township	0	30 *	0	0	0	49,850	9,500
Roseland Borough	0	0 *	0	0	0	95,741	214,662
South Orange Village	0	0	0	0	0	1,835,124	168,020
Verona Township	0	0 *	2	0	0	979,976	22,550
West Caldwell Township	10	1 *	0	0	0	3,261,313	10,400
West Orange Township	0	0	1	0	0	1,043,429	355,793
Gloucester County							
Clayton Borough	4	4	1	0	0	492,826	86,325
Deptford Township	3	4	0	0	0	1,755,911	1,381,305
East Greenwich Township	5	10 *	3	0	0	970,046	130,643
Elk Township	0	0	0	0	0	34,445	120,840
Franklin Township	3	1	0	0	0	679,850	54,644

MUNICIPAL SUMMARY DATA, August 2012

AREA NAME	AUTHORIZED	AUTHORIZED	HOUSING	OFFICE SPACE	RETAIL SPACE	RESI-	NONRESI-
	HOUSING	HOUSING UNITS		AUTHORIZED	AUTHORIZED		
	UNITS	(CENSUS	UNITS	BY BUILDING	BY BUILDING	(\$ AMOUNT)	(\$ AMOUNT)
		DEFINITIONS)	CERTIFIED	PERMITS	PERMITS		
Glassboro Borough	1	15 *	6	0	0	366,354	442,032
Greenwich Township	0	1 *	1	0	0	83,458	255,785
Harrison Township	2	2	7	0	0	918,427	76,147
Logan Township	1	1	0	2,040	0	1,023,827	1,728,662
Mantua Township	0	0	5	0	0	239,573	408,800
Monroe Township	3	3	7	0	0	919,260	121,985
National Park Borough	0	0	0	0	0	39,826	3,150
Newfield Borough	0	0 *	0	0	0	88,460	42,000
Paulsboro Borough	0	0	0	0	0	74,000	71,300
Pitman Borough	0	0 *	0	0	0	213,601	490,555
South Harrison Township	0	3	0	0	0	338,430	0
Swedesborough Borough	0	4 *	0	0	0	19,950	111,131
Washington Township	0	0	0	0	0	920,458	308,000
Wenonah Borough	0	0	0	0	0	31,769	31,678
West Deptford Township	1	1	1	0	0	297,546	7,616,585
Westville Borough	0	0	0	0	0	49,554	5,500
Woodbury City	0	0 *	0	88	0	221,687	186,400
Woodbury Heights Borough	0	0	0	0	0	59,690	5,601
Woolwich Township	44	44	19	0	0	2,622,020	227,207
Hudson County							
Bayonne City	2	7 *	0	0	0	1,142,524	533,130
East Newark Borough	0	0	0	0	0	20,000	30,000
Guttenberg Town	2	4	0	0	0	362,910	78,950
Harrison Town	2	2	275	0	0	655,505	338,322
Hoboken City	140	41 *	8	0	0	21,466,353	2,227,749
Jersey City	0	0	19	0	0	3,065,693	5,321,839
Kearny Town	6	0 *	0	0	0	567,121	670,438
North Bergen Township	0	0	0	0	0	751,607	624,376
Secaucus Town	0	52 *	2	0	0	2,609,746	3,906,004
Union City	0	0	0	0	0	1,059,346	398,607
Weehawken Township	0	0	0	0	0	491,170	129,000
West New York Town	0	0	30	0	0	435,777	1,083,494
Hunterdon County							
Alexandria Township	0	0	1	0	0	121,707	248,502
Bethlehem Township	0	0	0	0	0	160,395	110,513
Bloomsbury Borough	0	0	0	0	0	4,000	0
Califon Borough	0	0	0	0	0	66,963	0
Clinton Town	0	0	0	0	0	84,043	12,001
Clinton Township	1	1	0	0	0	757,040	419,350
Delaware Township	0	1 *	0	0	0	800	11,250
East Amwell Township	0	0 *	0	0	0	110,926	98,337
Flemington Borough	0	6 *	0	0	0	38,350	76,389
Franklin Township	0	0	0	0	0	129,855	21,150
Frenchtown Borough	1	0	0	0	0	123,800	738,000
Glen Gardner Borough	0	0	0	0	0	5,880	8,193
Hampton Borough	0	0 *	0	0	0	0	9,799
High Bridge Borough	0	0 *	0	0	0	39,698	0
Holland Township	0	0	0	0	0	290,480	77,593
Kingwood Township	0	1 *	0	0	0	149,398	20,850
Lambertville City	0	0	1	0	0	346,906	21,861
Lebanon Borough	0	0	0	0	0	13,400	45,947
Lebanon Township	0	0	0	0	0	150,471	225,851
Milford Borough	0	0	0	0	0	14,575	10,050
Raritan Township	2	2	4	0	0	1,172,978	552,091
Readington Township	0	0	1	0	0	806,781	207,018

MUNICIPAL SUMMARY DATA, August 2012

AREA NAME	AUTHORIZED	AUTHORIZED	HOUSING	OFFICE SPACE	RETAIL SPACE	RESI-	NONRESI-
	HOUSING	HOUSING UNITS		AUTHORIZED	AUTHORIZED		
	UNITS	(CENSUS	UNITS	BY BUILDING	BY BUILDING	(\$ AMOUNT)	(\$ AMOUNT)
		DEFINITIONS)	CERTIFIED	PERMITS	PERMITS		
Stockton Borough	0	0 *	0	0	0	0	0
Tewksbury Township	0	0	1	0	0	326,596	285,150
Union Township	0	0	0	1	0	209,991	37,617
West Amwell Township	0	0	0	0	0	253,029	24,530
Mercer County							
East Windsor Township	2	2	3	0	0	969,841	101,063
Ewing Township	0	0	0	0	0	473,360	2,777,439
Hamilton Township	2	2	2	0	0	2,291,991	2,781,378
Hightstown Borough	0	0	1	0	0	309,983	552,700
Hopewell Borough	0	0	0	0	0	121,800	99,963
Hopewell Township	0	0	0	0	0	1,199,164	414,512
Lawrence Township	0	0	0	154,979	0	854,334	5,781,570
Pennington Borough	0	0	0	0	0	141,449	48,000
Princeton Borough	0	0	0	0	0	863,353	3,643,159
Princeton Township	1	6 *	21	0	0	2,656,359	1,128,776
Trenton City	0	2 *	1	0	0	671,157	999,780
Robbinsville Township	0	0	1	0	0	513,600	4,561,316
West Windsor Township	2	10 *	2	0	0	1,977,203	6,406,537
Middlesex County							
Carteret Borough	0	16 *	0	0	0	266,172	113,447
Cranbury Township	0	0	0	0	0	307,122	767,939
Dunellen Borough	0	1 *	0	0	0	70,018	58,832
East Brunswick Township	0	0	0	0	0	1,515,888	1,536,352
Edison Township	2	2	23	567,307	0	4,711,748	26,550,627
Helmetta Borough	0	0	0	0	0	8,949	1
Highland Park Borough	0	7 *	0	0	0	104,817	776,023
Jamesburg Borough	0	0 *	0	0	0	36,950	24,363
Old Bridge Township	12	0	5	16,588	0	2,033,035	596,729
Metuchen Borough	1	1	1	0	0	943,939	33,587
Middlesex Borough	1	0 *	2	0	0	296,367	1,305,115
Milltown Borough	1	0 *	0	0	0	365,281	18,400
Monroe Township	20	20	35	0	0	5,230,820	5,574,768
New Brunswick City	0	9 *	0	0	0	1,531,054	3,072,460
North Brunswick Township	3	6 *	9	0	427,000	1,488,839	12,259,453
Perth Amboy City	1	1	0	79,620	0	671,733	4,468,075
Piscataway Township	54	38	28	0	0	5,580,092	1,739,219
Plainsboro Township	0	0	0	0	0	694,380	3,905,780
Sayreville Borough	0	0	12	0	0	4,145,993	21,298,150
South Amboy City	0	0 *	0	0	0	161,381	15,602
South Brunswick Township	4	4	5	3,000	0	1,574,861	2,708,165
South Plainfield Borough	0	7 *	0	0	0	128,094	1,316,835
South River Borough	5	0 *	0	0	0	637,744	320,956
Spotswood Borough	0	1 *	1	0	0	169,921	90,824
Woodbridge Township	64	0	0	8,321	8,478	5,184,567	5,554,669
Monmouth County							
Allenhurst Borough	0	0	0	0	0	19,100	0
Allentown Borough	0	0	0	0	0	50,994	6,750
Asbury Park City	0	0 *	1	0	0	1,414,630	547,507
Atlantic Highlands Borough	0	0 *	1	0	0	28,001	43,500
Avon-by-the-Sea Borough	2	1	1	0	0	675,061	69,600
Belmar Borough	2	1 *	1	0	0	1,035,870	187,850
Bradley Beach Borough	0	0 *	0	0	0	302,421	217,327
Brielle Borough	2	2	1	0	0	879,925	78,150
Colts Neck Township	0	0	0	0	0	1,898,411	415,800
Deal Borough	0	0 *	1	0	0	21,310	35,000

MUNICIPAL SUMMARY DATA, August 2012

AREA NAME	AUTHORIZED	AUTHORIZED	HOUSING	OFFICE SPACE	RETAIL SPACE	RESI-	NONRESI-
	HOUSING	HOUSING UNITS		AUTHORIZED	AUTHORIZED		
	UNITS	(CENSUS	UNITS	BY BUILDING	BY BUILDING	(\$ AMOUNT)	(\$ AMOUNT)
		DEFINITIONS)	CERTIFIED	PERMITS	PERMITS		
Eatontown Borough	0	7 *	0	0	0	220,641	324,956
Englishtown Borough	0	0	0	0	0	119,772	44,000
Fair Haven Borough	1	1	2	0	0	744,440	32,500
Farmingdale Borough	0	0	0	0	0	15,528	0
Freehold Borough	2	1 *	0	0	0	527,239	467,498
Freehold Township	0	0 *	0	0	0	1,120,118	1,098,085
Highlands Borough	0	0	0	0	0	207,146	53,800
Holmdel Township	4	4	2	0	0	2,308,465	6,012,850
Howell Township	87	87	6	821	19,960	9,025,589	2,477,554
Interlaken Borough	0	0 *	0	0	0	50,650	0
Keansburg Borough	0	0	0	0	0	186,892	161,371
Keyport Borough	0	1 *	0	0	0	209,739	37,775
Little Silver Borough	0	2 *	0	0	0	244,204	56,804
Loch Arbour Village	0	0 *	0	0	0	29,585	17,000
Long Branch City	10	10	3	0	0	2,678,041	111,413
Manalapan Township	10	0	46	0	0	2,949,284	343,100
Manasquan Borough	2	2	8	0	0	1,049,049	45,182
Marlboro Township	3	3	20	0	2,025	2,396,032	1,150,974
Matawan Borough	0	0	0	0	0	226,081	11,175
Aberdeen Township	0	0	6	0	0	262,832	74,695
Middletown Township	6	6	1	0	0	3,985,454	148,226
Millstone Township	0	0	0	0	0	450,267	644,628
Monmouth Beach Borough	0	0	2	0	0	535,268	38,101
Neptune Township	1	5 *	0	105	0	836,560	313,513
Neptune City Borough	0	0	0	0	0	233,441	56,200
Tinton Falls Borough	No report	1 *	No report	No report	No report	No report	No report
Ocean Township	4	4	0	0	0	946,421	499,944
Oceanport Borough	0	0	0	0	83,295	201,230	349,400
Hazlet Township	0	0	0	2,800	0	583,812	570,000
Red Bank Borough	0	1 *	1	0	0	186,118	617,826
Roosevelt Borough	0	0	0	0	0	71,650	0
Rumson Borough	2	2	4	0	0	1,479,960	48,500
Sea Bright Borough	0	1 *	0	0	0	72,680	0
Sea Girt Borough	0	0	3	0	0	275,477	19,500
Shrewsbury Borough	0	4 *	4	0	0	570,246	293,020
Shrewsbury Township	0	0	0	0	0	18,295	0
Lake Como Borough	0	0 *	0	0	0	55,875	3,250
Spring Lake Borough	1	1	2	0	0	1,747,913	79,860
Spring Lake Heights Boro	0	0	0	0	0	296,676	42,850
Union Beach Borough	1	1	0	0	0	138,840	164,200
Upper Freehold Township	1	1	2	0	0	700,445	88,405
Wall Township	0	0	2	0	0	781,632	4,385,233
West Long Branch Borough	1	5 *	0	0	0	168,042	554,559
Morris County							
Boonton Town	0	1 *	0	0	0	192,325	11,935
Boonton Township	0	1 *	1	0	0	221,618	0
Butler Borough	0	0	0	0	0	211,649	9,170
Chatham Borough	0	2 *	2	0	0	1,179,496	0
Chatham Township	3	3 *	3	0	0	2,197,924	105,501
Chester Borough	0	6 *	0	0	0	54,473	244,797
Chester Township	0	0	1	0	0	377,498	1,300,390
Denville Township	1	1	1	0	0	900,713	1,082,531
Dover Town	0	0	0	0	0	206,005	532,644
East Hanover Township	0	1 *	0	0	0	349,610	1,679,185
Florham Park Borough	3	4 *	3	0	0	1,451,572	758,672

MUNICIPAL SUMMARY DATA, August 2012

AREA NAME	AUTHORIZED HOUSING UNITS	AUTHORIZED HOUSING UNITS (CENSUS DEFINITIONS)	HOUSING UNITS CERTIFIED	OFFICE SPACE AUTHORIZED BY BUILDING PERMITS	RETAIL SPACE AUTHORIZED BY BUILDING PERMITS	RESIDENTIAL (\$ AMOUNT)	NONRESIDENTIAL (\$ AMOUNT)
	UNITS						
Hanover Township	10	1 *	2	5,496	0	3,426,175	2,622,488
Harding Township	0	0	1	0	0	300,244	88,150
Jefferson Township	0	0 *	2	56	0	624,634	353,812
Kinnelon Borough	1	1	3	0	0	1,143,561	47,545
Lincoln Park Borough	0	0	0	0	0	420,709	214,939
Madison Borough	0	6 *	2	0	0	1,376,563	848,220
Mendham Borough	0	0	0	0	0	399,812	55,025
Mendham Township	0	0	0	0	0	1,016,810	48,900
Mine Hill Township	0	0	0	0	0	54,565	0
Montville Township	1	1	0	0	0	941,338	454,217
Morris Township	0	2 *	0	0	0	968,965	901,660
Morris Plains Borough	0	6 *	0	0	0	189,900	41,080
Morristown Town	4	4	0	0	0	1,245,929	1,310,835
Mountain Lakes Borough	1	1 *	1	0	0	641,905	63,565
Mount Arlington Borough	0	2 *	4	0	0	94,588	144,283
Mount Olive Township	8	5 *	7	0	0	1,944,047	2,174,770
Netcong Borough	0	1 *	0	1,440	0	31,184	73,865
Parsippany-Troy Hills Twp	4	1 *	2	0	0	2,650,071	2,971,707
Long Hill Township	0	0	1	0	0	768,229	418,490
Pequannock Township	0	2 *	0	0	0	801,045	232,250
Randolph Township	1	1	0	0	0	1,053,137	655,281
Riverdale Borough	0	0	3	0	0	93,775	121,887
Rockaway Borough	0	0	0	0	0	83,114	48,050
Rockaway Township	0	2 *	0	0	0	576,321	1,724,549
Roxbury Township	2	2	0	0	0	1,501,972	427,996
Victory Gardens Borough	0	0	0	0	0	7,990	0
Washington Township	0	0	0	0	0	388,911	238,351
Wharton Borough	0	0 *	0	0	0	45,333	8,500
Ocean County							
Barnegat Light Borough	0	0	0	0	0	63,900	25,000
Bay Head Borough	0	0	0	0	0	95,700	150
Beach Haven Borough	1	1	3	0	0	627,350	2,000
Beachwood Borough	0	0	0	0	0	130,097	21,182
Berkeley Township	7	6	6	0	0	3,501,551	51,942
Brick Township	3	3	1	10,500	0	3,048,813	2,912,723
Toms River Township	4	8 *	12	16,801	0	3,301,674	2,980,066
Eagleswood Township	0	1 *	0	0	0	7,820	66,300
Harvey Cedars Borough	1	1	0	0	0	860,299	20,000
Island Heights Borough	0	0	0	0	0	29,597	1,850
Jackson Township	0	8 *	8	0	0	1,523,250	502,110
Lacey Township	1	1	2	0	0	978,866	153,395
Lakehurst Borough	0	0	0	0	0	73,383	0
Lakewood Township	29	10	22	23,059	2,990	4,155,831	4,393,943
Lavallette Borough	3	3	3	0	0	1,186,438	14,050
Little Egg Harbor Township	4	4	5	0	0	1,435,624	135,626
Long Beach Township	4	4	5	0	0	2,247,406	155,000
Manchester Township	4	0 *	4	0	0	1,484,974	477,467
Mantoloking Borough	0	2	0	0	0	1,488,618	0
Ocean Township	0	0	3	0	0	440,883	65,200
Ocean Gate Borough	0	0	1	0	0	44,410	226,200
Pine Beach Borough	0	1 *	0	0	0	35,632	0
Plumsted Township	1	1	0	0	0	428,647	81,437
Point Pleasant Borough	0	2 *	3	0	0	838,904	90,350
Point Pleasant Beach Boro	2	0 *	0	0	0	826,701	18,651
Seaside Heights Borough	0	0	0	0	0	149,965	299,586

MUNICIPAL SUMMARY DATA, August 2012

AREA NAME	AUTHORIZED	AUTHORIZED	HOUSING	OFFICE SPACE	RETAIL SPACE	RESI-	NONRESI-
	HOUSING	HOUSING UNITS	UNITS	AUTHORIZED	AUTHORIZED	DENTIAL	DENTIAL
	UNITS	(CENSUS	CERTIFIED	BY BUILDING	BY BUILDING	(\$ AMOUNT)	(\$ AMOUNT)
		DEFINITIONS)		PERMITS	PERMITS		
Seaside Park Borough	0	0	0	0	0	207,442	0
Ship Bottom Borough	0	0	1	0	0	131,796	24,500
South Toms River Borough	0	0	0	0	0	13,510	0
Stafford Township	25	25	41	0	0	2,840,286	485,747
Surf City Borough	1	1	3	0	0	506,172	0
Tuckerton Borough	0	0	0	0	0	0	153,177
Barneget Township	4	2	2	0	0	1,247,161	1,459,952
Passaic County							
Bloomington Borough	0	0	0	0	0	87,601	0
Clifton City	32	32	6	712	0	6,318,877	5,564,318
Haledon Borough	0	1 *	0	0	0	58,020	291,000
Hawthorne Borough	2	0 *	0	406	0	702,377	308,304
Little Falls Township	0	0	0	0	0	328,661	430,039
North Haledon Borough	0	0	0	0	0	654,988	254,178
Passaic City	27	27	0	0	0	2,420,084	1,155,026
Paterson City	1	2 *	0	0	0	1,693,809	2,163,920
Pompton Lakes Borough	0	1 *	0	0	0	301,271	495,029
Prospect Park Borough	0	0 *	0	0	0	91,460	0
Ringwood Borough	0	1 *	2	0	0	255,018	170,500
Totowa Borough	0	1 *	0	0	0	285,449	439,299
Wanaque Borough	0	0	10	0	0	228,088	8,675
Wayne Township	3	2	1	0	0	3,330,242	4,252,585
West Milford Township	0	2 *	1	0	0	768,593	382,622
Woodland Park Borough	1	1	12	15,400	0	426,559	378,400
Salem County							
Alloway Township	0	0	0	0	0	73,500	0
Elmer Borough	1	1	0	0	0	114,603	2,600
Elsinboro Township	0	0	0	0	0	7,250	19,800
Lower Alloways Creek Twp	0	0	1	0	0	4,285	2,044,630
Mannington Township	0	0	0	0	0	47,705	765,800
Oldmans Township	0	0	4	0	0	29,151	8,500
Penns Grove Borough	0	0	2	0	0	45,041	13,510
Pennsville Township	2	0 *	0	0	0	565,090	136,592
Pilesgrove Township	1	1	1	0	0	74,545	152,489
Pittsgrove Township	2	2	0	0	0	502,112	145,073
Quinton Township	2	2	0	0	0	168,159	16,000
Salem City	0	0	0	0	0	80,046	162,910
Carneys Point Township	3	1 *	0	0	0	392,628	1,763,500
Upper Pittsgrove Township	1	1	0	0	0	458,920	33,150
Woodstown Borough	0	0	1	0	0	55,558	17,025
Somerset County							
Bedminster Township	0	0	0	0	0	243,272	804,308
Bernards Township	1	1	1	0	0	3,296,117	5,901,110
Bernardsville Borough	0	0 *	2	0	0	823,886	118,732
Bound Brook Borough	0	7 *	0	0	0	168,763	30,097
Branchburg Township	0	0	1	1	0	788,223	494,281
Bridgewater Township	1	0	2	0	0	1,896,164	4,536,797
Far Hills Borough	0	0 *	0	0	0	22,457	0
Franklin Township	6	107	0	1	0	2,289,972	3,444,227
Green Brook Township	0	0	0	0	0	760	0
Hillsborough Township	10	6 *	3	1,358	0	3,728,832	597,602
Manville Borough	0	0	0	0	0	365,253	3,560
Millstone Borough	0	0	0	0	0	2,800	7,000
Montgomery Township	1	1	1	0	0	1,967,766	4,670,047
North Plainfield Borough	No report	0 *	No report	No report	No report	No report	No report

MUNICIPAL SUMMARY DATA, August 2012

AREA NAME	AUTHORIZED	AUTHORIZED	HOUSING UNITS CERTIFIED	OFFICE SPACE	RETAIL SPACE	RESI-DENTIAL (\$ AMOUNT)	NONRESI-DENTIAL (\$ AMOUNT)
	HOUSING UNITS	HOUSING UNITS (CENSUS DEFINITIONS)		AUTHORIZED BY BUILDING PERMITS	AUTHORIZED BY BUILDING PERMITS		
Peapack-Gladstone Borough	0	0 *	0	0	0	21,950	38,500
Raritan Borough	0	10 *	0	0	0	123,654	608,687
Rocky Hill Borough	0	0	0	0	0	216,480	5,850
Somerville Borough	0	0 *	0	0	0	532,895	691,154
South Bound Brook Boro	0	2 *	0	0	0	32,344	200
Warren Township	3	3	5	0	0	3,202,967	494,369
Watchung Borough	1	1	1	0	0	1,440,105	592,933
Sussex County							
Andover Borough	0	0 *	0	0	0	15,570	0
Andover Township	0	0	0	0	0	103,836	118,980
Branchville Borough	0	0	0	0	0	18,470	55,500
Byram Township	0	0	2	0	0	142,831	379,600
Frankford Township	0	1 *	1	0	0	558,365	127,000
Franklin Borough	0	0 *	0	0	0	74,189	202,200
Fredon Township	0	0	0	0	0	71,711	57,510
Green Township	0	2 *	0	0	0	148,200	164,758
Hamburg Borough	0	0	0	0	0	132,865	5,850
Hampton Township	0	0	0	0	0	165,081	36,057
Hardyston Township	18	0	0	0	0	391,510	127,950
Hopatcong Borough	1	1	0	0	0	531,536	105,890
Lafayette Township	0	0	0	0	0	196,044	30,675
Montague Township	1	1	0	0	0	49,350	10,435
Newton Town	0	0 *	0	0	0	119,018	488,191
Ogdensburg Borough	0	0	0	0	0	17,038	24,838
Sandyston Township	0	0	0	0	0	39,650	30,500
Sparta Township	0	3 *	0	0	0	728,004	511,337
Stanhope Borough	0	0 *	0	0	0	31,825	3,000
Stillwater Township	1	1	0	0	0	364,780	73,790
Sussex Borough	0	0 *	0	0	0	46,032	61,600
Vernon Township	0	1 *	0	1,359	0	836,877	3,119,806
Walpack Township	0	0	0	0	0	0	0
Wantage Township	0	6 *	1	0	0	97,175	877,825
Union County							
Berkeley Heights Township	7	1	0	0	0	1,055,258	3,558,753
Clark Township	0	1 *	1	0	0	853,032	303,413
Cranford Township	0	7 *	0	0	0	1,702,992	502,116
Elizabeth City	10	9 *	4	0	0	1,443,847	4,420,811
Fanwood Borough	0	1 *	0	0	0	335,716	0
Garwood Borough	0	7 *	0	0	0	163,256	2,575
Hillside Township	0	0	0	0	0	259,840	81,200
Kenilworth Borough	3	3	1	1,840	0	483,007	8,236,574
Linden City	1	4 *	2	560	27,615	499,551	2,338,567
Mountainside Borough	0	1 *	1	0	0	185,755	47,198
New Providence Borough	0	1 *	0	0	0	457,751	1,001,620
Plainfield City	0	0	1	0	0	871,190	410,400
Rahway City	0	0	0	0	0	468,462	707,468
Roselle Borough	0	0	0	0	0	361,853	39,350
Roselle Park Borough	0	2 *	0	0	0	413,992	25,388
Scotch Plains Township	1	1	0	0	0	1,868,817	1,102,300
Springfield Township	4	4	8	0	0	977,788	347,326
Summit City	0	0	5	0	0	2,221,323	960,459
Union Township	0	0	2	0	0	2,009,850	2,621,185
Westfield Town	2	1	0	0	0	4,752,405	259,195
Winfield Township	0	0	0	0	0	3,000	0
Warren County							

MUNICIPAL SUMMARY DATA, August 2012

AREA NAME	AUTHORIZED	AUTHORIZED	HOUSING	OFFICE SPACE	RETAIL SPACE	RESI-	NONRESI-
	HOUSING	HOUSING UNITS	UNITS	AUTHORIZED	AUTHORIZED	DENTIAL	DENTIAL
	UNITS	(CENSUS	CERTIFIED	BY BUILDING	BY BUILDING	(\$ AMOUNT)	(\$ AMOUNT)
		DEFINITIONS)		PERMITS	PERMITS		
Allamuchy Township	0	0	1	0	0	0	336,780
Alpha Borough	0	0	0	0	0	28,081	87,425
Belvidere Town	0	0 *	0	0	0	83,642	9,750
Blairstown Township	0	0	0	0	0	147,168	58,550
Franklin Township	0	0	1	0	0	67,327	32,925
Frelinghuysen Township	0	0 *	0	0	0	0	100,953
Greenwich Township	0	0	0	0	0	58,867	93,715
Hackettstown Town	0	3 *	0	0	0	87,290	671,406
Hardwick Township	0	0	0	0	0	160,181	6,500
Harmony Township	0	0	0	0	0	3,000	40,627
Hope Township	0	0	0	0	0	32,761	24,000
Independence Township	1	1	0	0	0	316,987	4,700
Knowlton Township	0	0	0	0	0	238,985	293,300
Liberty Township	0	0	0	0	0	145,500	3,800
Lopatcong Township	0	6 *	0	0	0	468,081	168,990
Mansfield Township	0	0	0	0	0	79,024	133,095
Oxford Township	0	0	0	0	0	11,350	49,872
Pahaquary Township	See Hardwick Twp.						
Phillipsburg Town	0	0 *	0	0	0	250,058	52,549
Pohatcong Township	0	1 *	0	0	0	136,660	90,625
Washington Borough	0	0	7	0	0	65,756	19,573
Washington Township	0	0	0	0	1	81,405	196,220
White Township	0	0	0	0	0	114,900	1,637,887
State Buildings	0		0	0	0	3,000	23,710,808

The New Jersey
CONSTRUCTION REPORTER
AUGUST 2012 DATA

DISTRIBUTED BY THE

New Jersey Department of
COMMUNITY AFFAIRS
DIVISION OF CODES AND STANDARDS
101 South Broad Street,
PO Box 802
Trenton, NJ 08625-0802
(609) 292-7898
www.nj.gov/dca/divisions/codes/reporter/



DEPARTMENT OF
Community
AFFAIRS

In cooperation with the
STATE DATA CENTER of the
NEW JERSEY DEPARTMENT OF LABOR AND
WORKFORCE DEVELOPMENT

Production and Distribution Staff

RICHARD BYRNE
CYNTHIA CORDERO
LYNN FERRARA
AMY FENWICK FRANK
JOHN LAGO
CHARLES PIERSON, JR.
ANTHONY SCHIAVINO
SUSAN WOIDILL

2012