

The New Jersey Department of Education (NJDOE) is pleased to present these annual reports of School Performance. These reports are designed to inform parents, educators and communities about how well a school is performing and preparing its students for college and careers.

In particular, the School Performance Reports seek to:

- **Focus** attention on metrics that are indicative of college and career readiness.
- **Benchmark** a school's performance against other peer schools that are educating similar students, against statewide outcomes, and against state targets to illuminate and build upon a school's strengths and identify areas for improvement.
- **Improve** educational outcomes for students by providing both longitudinal and growth data so that progress can be measured as part of an individual school's efforts to engage in continuous improvement.

While the New Jersey School Performance Reports seek to bring more information to educators and stakeholders about the performance of schools, they do not seek to distill the performance of schools into a single metric, a single score, or a simplified conclusion. Instead, the intention is that educators and stakeholders will engage in deep, lengthy conversations about the full range of the data presented. As educators know well, measuring school performance is both an art and a science. While the School Performance Report brings attention to important student outcomes, NJDOE does not collect data about other essential elements of a school, such as the provision of opportunities to participate and excel in extracurricular activities; the development of non-cognitive skills like time management and perseverance; the pervasiveness of a positive school culture or climate; or the attainment of other employability and technical skills, as many of these data are beyond both the capacity and resources of schools to measure and collect well.

To learn more about New Jersey's school accountability system, please visit: <http://www.nj.gov/education/educators/>.

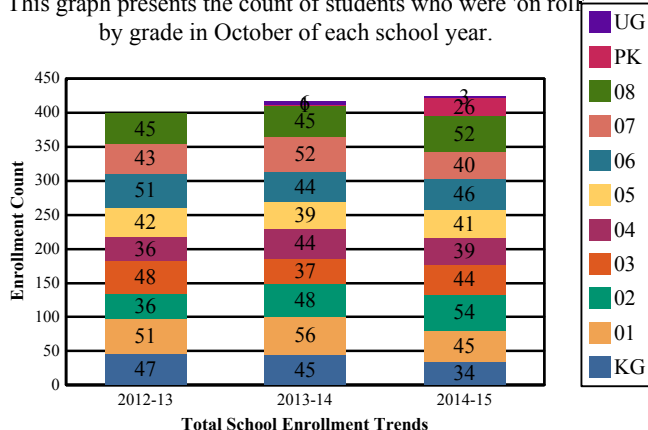
**DEMOGRAPHIC INFORMATION**

CUMBERLAND  
MAURICE RIVER TWP

GRADE SPAN PK-08

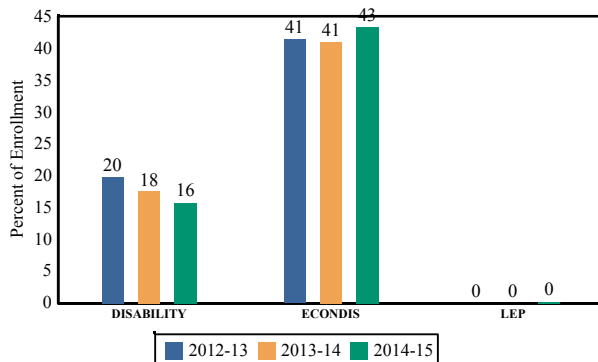
**Enrollment by Grade**

This graph presents the count of students who were 'on roll' by grade in October of each school year.



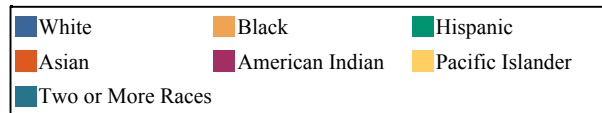
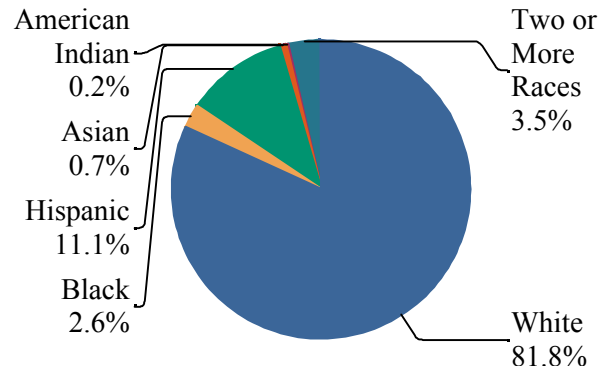
**Enrollment Trends by Program Participation**

This graph presents the percentages of students by program participation who were 'on roll' in October of each school year.



**Enrollment by Ethnic/Racial Subgroup**

This graph presents the percentages of enrollment for each subgroup defined by the No Child Left Behind Act of 2001.



**Language Diversity**

This table presents the percentage of students who primarily speak each language in their home.

2014-15	Percent
English	99.8%
Spanish	0.2%

**Current Year Enrollment by Program Participation**

2014-15	Count of Students	% of Enrollment
Students with Disability	67	16%
Economically Disadvantaged Students	184	43.4%
English Language Learners	1	0.2%

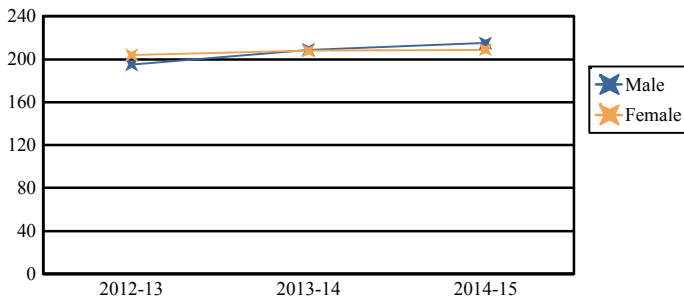
Note: "UG" represents the count of students who are 'on roll' in this school but who are educated in ungraded classrooms, meaning that the classrooms may contain students from multiple grade levels.

**Total School Enrollment**

2012-13	399
2013-14	417
2014-15	424

**Enrollment by Gender**

This graph presents the count of students by gender who were 'on roll' in October of each school year.



	Male	Female
2012-13	195	204
2013-14	209	208
2014-15	215	209

**ACADEMIC ACHIEVEMENT**

**CUMBERLAND**

**MAURICE RIVER TWP**

**GRADE SPAN PK-08**

**MAURICE RIVER TOWNSHIP SCHOOL DISTRICT**

3593 RT 47

**PORT ELIZABETH, NJ 08348-0464**

The Academic Achievement section measures the content knowledge that students have in English Language Arts/Literacy (ELA/L) and Math as demonstrated in the 2014-2015 *Partnership for Assessment of Readiness for College and Careers* (PARCC) assessments. The below chart consist of three columns. The first column - Schoolwide Performance - includes the percentage of students in ELA/L and Math who met or exceeded grade level expectations. The middle column - Peer School Percentile - indicates how the school's outcomes compared to its peers. The last column - Statewide Percentile - indicates how the school's outcomes compared to schools across the state.

<b>Academic Achievement Indicators</b>	<b>Schoolwide Performance</b>	<b>Peer Percentile</b>	<b>State Percentile</b>
English Language Arts/Literacy Met or Exceeded Expectation	<b>38%</b>	<b>20</b>	<b>32</b>
Math Met or Exceeded Expectation	<b>26%</b>		

**ESEA Waiver - English Language Arts/Literacy**

This table presents, for each subgroup in the school, the total number of valid test scores, the percentage of students who met or exceeded expectations, the assessment participation goal, and the participation rate. The participation goal is established as 95% by the United States Department of Education.

<b>Subgroups</b>	<b>Valid Scores</b>	<b>% Meeting Standards</b>	<b>Participation Goal</b>	<b>Participation Rate</b>	<b>Met Participation?</b>
Schoolwide	257	37.8%	95%	97%	<b>YES</b>
White	212	38.2%	95%	96.8%	<b>YES</b>
African American	-	-	--	--	--
Hispanic	-	-	--	--	--
American Indian	-	-	--	--	--
Asian	-	-	--	--	--
Two or More Races	-	-	--	--	--
Students with Disability	50	14%	95%	92.6%	<b>YES*</b>
English Language Learners	-	-	--	--	--
Economically Disadvantaged Students	101	28.7%	95%	95.3%	<b>YES</b>

**YES\* = Met Participation Rate (Participation Averaging applied)**

Data is presented for subgroups when the count is high enough under ESEA Waiver suppression rules.

**ACADEMIC ACHIEVEMENT**

MAURICE RIVER TOWNSHIP SCHOOL DISTRICT

CUMBERLAND

3593 RT 47

MAURICE RIVER TWP

GRADE SPAN PK-08

PORT ELIZABETH, NJ 08348-0464

**ESEA Waiver - Math**

This table presents, for each subgroup in the school, the total number of valid test scores, the percentage of students who met or exceeded expectations, the assessment participation goal, and the participation rate. The participation goal is established as 95% by the United States Department of Education.

Subgroups	Valid Scores	% Meeting Standards	Participation Goal	Participation Rate	Met Participation?
Schoolwide	257	25.7%	95%	97%	YES
White	212	26.9%	95%	96.8%	YES
African American	-	-	--	--	--
Hispanic	-	-	--	--	--
American Indian	-	-	--	--	--
Asian	-	-	--	--	--
Two or More Races	-	-	--	--	--
Students with Disability	-	-	--	--	--
English Learner Students	-	-	--	--	--
Economically Disadvantaged Students	101	16.8%	95%	95.4%	YES

**YES\* = Met Participation Rate (Participation Averaging applied)**

Data is presented for subgroups when the count is high enough under ESEA Waiver suppression rules.

PARCC Performance Level

The PARCC assesses how well students have learned grade-level material in English Language Arts/Literacy (ELA/L) and Math. The tests include questions that measure students' fundamental skills and knowledge, and require them to think critically, solve problems and support or explain their answers.

The PARCC reports students' overall scale scores that range from 650 to 850. To determine whether students have met academic expectations for their grade level/course in ELA/L and Math, students' overall scale scores are categorized into five Performance Levels. Students performing at levels 4 and 5 (met or exceeded expectations) have demonstrated readiness for the next grade level/course, and are on track for college and careers.

Five Performance Levels				
<b>Level 1:</b> Did Not Yet Meet Expectations <i>(Min. 650)</i>	<b>Level 2:</b> Partially Met Expectations	<b>Level 3:</b> Approached Expectations	<b>Level 4:</b> Met Expectations	<b>Level 5:</b> Exceeded Expectations <i>(Max. 850)</i>

**ACADEMIC ACHIEVEMENT**

CUMBERLAND  
MAURICE RIVER TWP

MAURICE RIVER TOWNSHIP SCHOOL DISTRICT  
3593 RT 47  
PORT ELIZABETH, NJ 08348-0464

GRADE SPAN PK-08

**PARCC ELA Performance Distribution - Grade - 03**

This table presents the grade level outcomes, as measured by PARCC, in all five performance levels for all subgroups. PARCC consists of five performance levels: Level 1 - Did not yet meet grade-level expectations, Level 2 -Partially met expectations, Level 3 - Approached expectations, Level 4 - Met expectations, and Level 5 - Exceeded expectations.

Subgroup	Valid Scores	Mean Scale Score	State Mean Scale Score	% Level_1	% Level_2	% Level_3	% Level_4	% Level_5	% Met/ Exceeded Expectation	State % Met/Exceeded Expectation
Schoolwide	43	714	744	42%	12%	28%	19%	0%	19%	44%
White	35	718	753	37%	11%	29%	23%	0%	23%	55%
African American	-	-	725	-	-	-	-	-	-	26%
Hispanic	-	-	727	-	-	-	-	-	-	26%
American Indian	-	-	738	-	-	-	-	-	-	40%
Asian	-	-	769	-	-	-	-	-	-	70%
Two or More Races	-	-	751	-	-	-	-	-	-	53%
Students with Disability	-	-	718	-	-	-	-	-	-	24%
English Language Learners	-	-	709	-	-	-	-	-	-	11%
Economically Disadvantaged Students	19	704	724	53%	11%	26%	11%	0%	11%	24%

**ACADEMIC ACHIEVEMENT**

MAURICE RIVER TOWNSHIP SCHOOL DISTRICT

CUMBERLAND

GRADE SPAN PK-08

3593 RT 47

MAURICE RIVER TWP

PORT ELIZABETH, NJ 08348-0464

**PARCC ELA Performance Distribution - Grade - 04**

This table presents the grade level outcomes, as measured by PARCC, in all five performance levels for all subgroups. PARCC consists of five performance levels: Level 1 - Did not yet meet grade-level expectations, Level 2 -Partially met expectations, Level 3 - Approached expectations, Level 4 - Met expectations, and Level 5 - Exceeded expectations.

Subgroup	Valid Scores	Mean Scale Score	State Mean Scale Score	% Level_1	% Level_2	% Level_3	% Level_4	% Level_5	% Met/ Exceeded Expectation	State % Met/Exceeded Expectation
Schoolwide	40	735	751	10%	23%	33%	35%	0%	35%	52%
White	34	734	758	9%	26%	29%	35%	0%	35%	63%
African American	-	-	733	-	-	-	-	-	-	30%
Hispanic	-	-	737	-	-	-	-	-	-	35%
American Indian	-	-	746	-	-	-	-	-	-	52%
Asian	-	-	773	-	-	-	-	-	-	78%
Two or More Races	-	-	760	-	-	-	-	-	-	62%
Students with Disability	-	-	725	-	-	-	-	-	-	25%
English Language Learners	-	-	717	-	-	-	-	-	-	15%
Economically Disadvantaged Students	21	730	734	19%	14%	29%	38%	0%	38%	31%

**ACADEMIC ACHIEVEMENT**

MAURICE RIVER TOWNSHIP SCHOOL DISTRICT

CUMBERLAND

GRADE SPAN PK-08

3593 RT 47

MAURICE RIVER TWP

PORT ELIZABETH, NJ 08348-0464

**PARCC ELA Performance Distribution - Grade - 05**

This table presents the grade level outcomes, as measured by PARCC, in all five performance levels for all subgroups. PARCC consists of five performance levels: Level 1 - Did not yet meet grade-level expectations, Level 2 -Partially met expectations, Level 3 - Approached expectations, Level 4 - Met expectations, and Level 5 - Exceeded expectations.

Subgroup	Valid Scores	Mean Scale Score	State Mean Scale Score	% Level_1	% Level_2	% Level_3	% Level_4	% Level_5	% Met/ Exceeded Expectation	State % Met/Exceeded Expectation
Schoolwide	40	744	751	5%	25%	20%	48%	3%	50%	53%
White	32	742	757	6%	25%	22%	47%	0%	47%	62%
African American	-	-	734	-	-	-	-	-	-	31%
Hispanic	-	-	737	-	-	-	-	-	-	35%
American Indian	-	-	746	-	-	-	-	-	-	45%
Asian	-	-	771	-	-	-	-	-	-	77%
Two or More Races	-	-	758	-	-	-	-	-	-	61%
Students with Disability	-	-	723	-	-	-	-	-	-	21%
English Language Learners	-	-	717	-	-	-	-	-	-	15%
Economically Disadvantaged Students	17	740	734	0%	41%	12%	47%	0%	47%	31%

**ACADEMIC ACHIEVEMENT**

MAURICE RIVER TOWNSHIP SCHOOL DISTRICT

CUMBERLAND

3593 RT 47

MAURICE RIVER TWP

GRADE SPAN PK-08

PORT ELIZABETH, NJ 08348-0464

**PARCC ELA Performance Distribution - Grade - 06**

This table presents the grade level outcomes, as measured by PARCC, in all five performance levels for all subgroups. PARCC consists of five performance levels: Level 1 - Did not yet meet grade-level expectations, Level 2 -Partially met expectations, Level 3 - Approached expectations, Level 4 - Met expectations, and Level 5 - Exceeded expectations.

Subgroup	Valid Scores	Mean Scale Score	State Mean Scale Score	% Level_1	% Level_2	% Level_3	% Level_4	% Level_5	% Met/ Exceeded Expectation	State % Met/Exceeded Expectation
Schoolwide	45	737	749	9%	27%	24%	38%	2%	40%	50%
White	34	733	755	12%	29%	24%	32%	3%	35%	59%
African American	-	-	732	-	-	-	-	-	-	29%
Hispanic	-	-	736	-	-	-	-	-	-	34%
American Indian	-	-	743	-	-	-	-	-	-	39%
Asian	-	-	770	-	-	-	-	-	-	77%
Two or More Races	-	-	753	-	-	-	-	-	-	57%
Students with Disability	-	-	718	-	-	-	-	-	-	17%
English Language Learners	-	-	711	-	-	-	-	-	-	11%
Economically Disadvantaged Students	15	727	733	7%	53%	20%	20%	0%	20%	30%

**ACADEMIC ACHIEVEMENT**

CUMBERLAND  
MAURICE RIVER TWP

MAURICE RIVER TOWNSHIP SCHOOL DISTRICT  
3593 RT 47  
PORT ELIZABETH, NJ 08348-0464

GRADE SPAN PK-08

**PARCC ELA Performance Distribution - Grade - 07**

This table presents the grade level outcomes, as measured by PARCC, in all five performance levels for all subgroups. PARCC consists of five performance levels: Level 1 - Did not yet meet grade-level expectations, Level 2 -Partially met expectations, Level 3 - Approached expectations, Level 4 - Met expectations, and Level 5 - Exceeded expectations.

Subgroup	Valid Scores	Mean Scale Score	State Mean Scale Score	% Level_1	% Level_2	% Level_3	% Level_4	% Level_5	% Met/ Exceeded Expectation	State % Met/Exceeded Expectation
Schoolwide	40	733	750	15%	20%	25%	38%	3%	40%	53%
White	34	733	757	15%	21%	24%	38%	3%	41%	61%
African American	-	-	730	-	-	-	-	-	-	31%
Hispanic	-	-	736	-	-	-	-	-	-	36%
American Indian	-	-	746	-	-	-	-	-	-	49%
Asian	-	-	777	-	-	-	-	-	-	80%
Two or More Races	-	-	756	-	-	-	-	-	-	58%
Students with Disability	-	-	713	-	-	-	-	-	-	18%
English Language Learners	-	-	703	-	-	-	-	-	-	11%
Economically Disadvantaged Students	16	730	733	13%	25%	31%	31%	0%	31%	33%

**ACADEMIC ACHIEVEMENT**

MAURICE RIVER TOWNSHIP SCHOOL DISTRICT

CUMBERLAND

3593 RT 47

MAURICE RIVER TWP

GRADE SPAN PK-08

PORT ELIZABETH, NJ 08348-0464

**PARCC ELA Performance Distribution - Grade - 08**

This table presents the grade level outcomes, as measured by PARCC, in all five performance levels for all subgroups. PARCC consists of five performance levels: Level 1 - Did not yet meet grade-level expectations, Level 2 -Partially met expectations, Level 3 - Approached expectations, Level 4 - Met expectations, and Level 5 - Exceeded expectations.

Subgroup	Valid Scores	Mean Scale Score	State Mean Scale Score	% Level_1	% Level_2	% Level_3	% Level_4	% Level_5	% Met/ Exceeded Expectation	State % Met/Exceeded Expectation
Schoolwide	49	734	750	20%	16%	20%	41%	2%	43%	53%
White	43	735	757	21%	14%	19%	44%	2%	47%	61%
African American	-	-	730	-	-	-	-	-	-	31%
Hispanic	-	-	735	-	-	-	-	-	-	37%
American Indian	-	-	741	-	-	-	-	-	-	49%
Asian	-	-	778	-	-	-	-	-	-	80%
Two or More Races	-	-	753	-	-	-	-	-	-	55%
Students with Disability	-	-	713	-	-	-	-	-	-	16%
English Language Learners	-	-	701	-	-	-	-	-	-	9%
Economically Disadvantaged Students	13	726	732	23%	15%	38%	23%	0%	23%	34%

**PARCC MATH - Performance Distribution - Grade - 03**

This table presents the grade level outcomes, as measured by PARCC, in all five performance levels for all subgroups. PARCC consists of five performance levels: Level 1 - Did not yet meet grade-level expectations, Level 2 -Partially met expectations, Level 3 - Approached expectations, Level 4 - Met expectations, and Level 5 - Exceeded expectations.

Subgroup	Valid Scores	Mean Scale Score	State Mean Scale Score	% Level_1	% Level_2	% Level_3	% Level_4	% Level_5	% Met/ Exceeded Expectation	State % Met/Exceeded Expectation
Schoolwide	43	729	746	28%	14%	30%	28%	0%	28%	46%
White	35	734	752	23%	14%	29%	34%	0%	34%	56%
African American	-	-	728	-	-	-	-	-	-	25%
Hispanic	-	-	733	-	-	-	-	-	-	28%
American Indian	-	-	742	-	-	-	-	-	-	41%
Asian	-	-	772	-	-	-	-	-	-	77%
Two or More Races	-	-	751	-	-	-	-	-	-	54%
Students with Disability	-	-	727	-	-	-	-	-	-	27%
English Language Learners	-	-	724	-	-	-	-	-	-	17%
Economically Disadvantaged Students	19	718	730	37%	21%	32%	11%	0%	11%	26%

**ACADEMIC ACHIEVEMENT**

CUMBERLAND  
MAURICE RIVER TWP

MAURICE RIVER TOWNSHIP SCHOOL DISTRICT  
3593 RT 47  
PORT ELIZABETH, NJ 08348-0464

GRADE SPAN PK-08

**PARCC MATH - Performance Distribution - Grade - 04**

This table presents the grade level outcomes, as measured by PARCC, in all five performance levels for all subgroups. PARCC consists of five performance levels: Level 1 - Did not yet meet grade-level expectations, Level 2 -Partially met expectations, Level 3 - Approached expectations, Level 4 - Met expectations, and Level 5 - Exceeded expectations.

Subgroup	Valid Scores	Mean Scale Score	State Mean Scale Score	% Level_1	% Level_2	% Level_3	% Level_4	% Level_5	% Met/ Exceeded Expectation	State % Met/Exceeded Expectation
Schoolwide	40	730	744	8%	38%	35%	20%	0%	20%	42%
White	34	729	749	9%	38%	32%	21%	0%	21%	50%
African American	-	-	727	-	-	-	-	-	-	20%
Hispanic	-	-	732	-	-	-	-	-	-	26%
American Indian	-	-	740	-	-	-	-	-	-	40%
Asian	-	-	769	-	-	-	-	-	-	75%
Two or More Races	-	-	750	-	-	-	-	-	-	52%
Students with Disability	-	-	724	-	-	-	-	-	-	21%
English Language Learners	-	-	722	-	-	-	-	-	-	15%
Economically Disadvantaged Students	21	725	730	14%	38%	33%	14%	0%	14%	23%

**ACADEMIC ACHIEVEMENT**

CUMBERLAND  
MAURICE RIVER TWP

MAURICE RIVER TOWNSHIP SCHOOL DISTRICT  
3593 RT 47  
PORT ELIZABETH, NJ 08348-0464

GRADE SPAN PK-08

**PARCC MATH - Performance Distribution - Grade - 05**

This table presents the grade level outcomes, as measured by PARCC, in all five performance levels for all subgroups. PARCC consists of five performance levels: Level 1 - Did not yet meet grade-level expectations, Level 2 -Partially met expectations, Level 3 - Approached expectations, Level 4 - Met expectations, and Level 5 - Exceeded expectations.

Subgroup	Valid Scores	Mean Scale Score	State Mean Scale Score	% Level_1	% Level_2	% Level_3	% Level_4	% Level_5	% Met/ Exceeded Expectation	State % Met/Exceeded Expectation
Schoolwide	40	736	744	5%	33%	30%	33%	0%	33%	42%
White	32	735	749	6%	34%	28%	31%	0%	31%	49%
African American	-	-	728	-	-	-	-	-	-	21%
Hispanic	-	-	733	-	-	-	-	-	-	26%
American Indian	-	-	745	-	-	-	-	-	-	46%
Asian	-	-	768	-	-	-	-	-	-	74%
Two or More Races	-	-	749	-	-	-	-	-	-	50%
Students with Disability	-	-	724	-	-	-	-	-	-	19%
English Language Learners	-	-	724	-	-	-	-	-	-	17%
Economically Disadvantaged Students	17	728	731	12%	29%	41%	18%	0%	18%	23%

**ACADEMIC ACHIEVEMENT**

MAURICE RIVER TOWNSHIP SCHOOL DISTRICT

CUMBERLAND

3593 RT 47

MAURICE RIVER TWP

GRADE SPAN PK-08

PORT ELIZABETH, NJ 08348-0464

**PARCC MATH - Performance Distribution - Grade - 06**

This table presents the grade level outcomes, as measured by PARCC, in all five performance levels for all subgroups. PARCC consists of five performance levels: Level 1 - Did not yet meet grade-level expectations, Level 2 -Partially met expectations, Level 3 - Approached expectations, Level 4 - Met expectations, and Level 5 - Exceeded expectations.

Subgroup	Valid Scores	Mean Scale Score	State Mean Scale Score	% Level_1	% Level_2	% Level_3	% Level_4	% Level_5	% Met/ Exceeded Expectation	State % Met/Exceeded Expectation
Schoolwide	45	731	743	9%	31%	38%	22%	0%	22%	42%
White	34	731	749	9%	35%	29%	26%	0%	26%	50%
African American	-	-	726	-	-	-	-	-	-	19%
Hispanic	-	-	731	-	-	-	-	-	-	25%
American Indian	-	-	740	-	-	-	-	-	-	35%
Asian	-	-	768	-	-	-	-	-	-	75%
Two or More Races	-	-	745	-	-	-	-	-	-	44%
Students with Disability	-	-	718	-	-	-	-	-	-	15%
English Language Learners	-	-	718	-	-	-	-	-	-	14%
Economically Disadvantaged Students	15	723	729	13%	40%	33%	13%	0%	13%	23%

**ACADEMIC ACHIEVEMENT**

CUMBERLAND  
MAURICE RIVER TWP

MAURICE RIVER TOWNSHIP SCHOOL DISTRICT  
3593 RT 47  
PORT ELIZABETH, NJ 08348-0464

GRADE SPAN PK-08

**PARCC MATH - Performance Distribution - Grade - 07**

This table presents the grade level outcomes, as measured by PARCC, in all five performance levels for all subgroups. PARCC consists of five performance levels: Level 1 - Did not yet meet grade-level expectations, Level 2 -Partially met expectations, Level 3 - Approached expectations, Level 4 - Met expectations, and Level 5 - Exceeded expectations.

Subgroup	Valid Scores	Mean Scale Score	State Mean Scale Score	% Level_1	% Level_2	% Level_3	% Level_4	% Level_5	% Met/ Exceeded Expectation	State % Met/Exceeded Expectation
Schoolwide	40	732	740	15%	15%	45%	23%	3%	25%	38%
White	34	732	745	12%	18%	50%	18%	3%	21%	46%
African American	-	-	725	-	-	-	-	-	-	17%
Hispanic	-	-	730	-	-	-	-	-	-	23%
American Indian	-	-	734	-	-	-	-	-	-	32%
Asian	-	-	760	-	-	-	-	-	-	68%
Two or More Races	-	-	742	-	-	-	-	-	-	43%
Students with Disability	-	-	715	-	-	-	-	-	-	11%
English Language Learners	-	-	717	-	-	-	-	-	-	11%
Economically Disadvantaged Students	16	734	728	19%	6%	44%	25%	6%	31%	21%

**ACADEMIC ACHIEVEMENT**

MAURICE RIVER TOWNSHIP SCHOOL DISTRICT

CUMBERLAND

3593 RT 47

MAURICE RIVER TWP

GRADE SPAN PK-08

PORT ELIZABETH, NJ 08348-0464

**PARCC MATH - Performance Distribution - Grade - 08**

This table presents the grade level outcomes, as measured by PARCC, in all five performance levels for all subgroups. PARCC consists of five performance levels: Level 1 - Did not yet meet grade-level expectations, Level 2 -Partially met expectations, Level 3 - Approached expectations, Level 4 - Met expectations, and Level 5 - Exceeded expectations.

Subgroup	Valid Scores	Mean Scale Score	State Mean Scale Score	% Level_1	% Level_2	% Level_3	% Level_4	% Level_5	% Met/ Exceeded Expectation	State % Met/Exceeded Expectation
Schoolwide	-	-	726	-	-	-	-	-	-	24%
White	-	-	732	-	-	-	-	-	-	29%
African American	-	-	715	-	-	-	-	-	-	14%
Hispanic	-	-	721	-	-	-	-	-	-	19%
American Indian	-	-	722	-	-	-	-	-	-	15%
Asian	-	-	744	-	-	-	-	-	-	46%
Two or More Races	-	-	724	-	-	-	-	-	-	24%
Students with Disability	-	-	705	-	-	-	-	-	-	9%
English Language Learners	-	-	706	-	-	-	-	-	-	10%
Economically Disadvantaged Students	-	-	719	-	-	-	-	-	-	17%

**ACADEMIC ACHIEVEMENT**

MAURICE RIVER TOWNSHIP SCHOOL DISTRICT

CUMBERLAND  
MAURICE RIVER TWP

GRADE SPAN PK-08

3593 RT 47

PORT ELIZABETH, NJ 08348-0464

**PARCC ALGEBRA I - Performance Distribution**

This table presents the grade level outcomes, as measured by PARCC, in all five performance levels for all subgroups. PARCC consists of five performance levels: Level 1 - Did not yet meet grade-level expectations, Level 2 -Partially met expectations, Level 3 - Approached expectations, Level 4 - Met expectations, and Level 5 - Exceeded expectations.

Subgroup	Valid Scores	Mean Scale Score	State Mean Scale Score	% Level_1	% Level_2	% Level_3	% Level_4	% Level_5	% Met/ Exceeded Expectation	State % Met/Exceeded Expectation
Schoolwide	22	754	740	0%	5%	41%	55%	0%	55%	40%
White	20	756	746	0%	0%	45%	55%	0%	55%	47%
African American	-	-	722	-	-	-	-	-	-	20%
Hispanic	-	-	725	-	-	-	-	-	-	21%
American Indian	-	-	733	-	-	-	-	-	-	35%
Asian	-	-	769	-	-	-	-	-	-	73%
Two or More Races	-	-	734	-	-	-	-	-	-	35%
Students with Disability	-	-	710	-	-	-	-	-	-	8%
English Language Learners	-	-	710	-	-	-	-	-	-	7%
Economically Disadvantaged Students	-	-	725	-	-	-	-	-	-	21%

**ACADEMIC ACHIEVEMENT**

CUMBERLAND  
MAURICE RIVER TWP

GRADE SPAN PK-08

MAURICE RIVER TOWNSHIP SCHOOL DISTRICT  
3593 RT 47  
PORT ELIZABETH, NJ 08348-0464

**2015 National Assessment Educational Progress (NAEP)**

The National Assessment of Educational Progress (NAEP) is the largest national assessment of what our nation's students know and can do. NAEP assesses fourth-, eighth-, and twelfth-grade students in subjects such as reading, mathematics, science, and writing. The reporting of NAEP scores on state report cards is a federal mandate. The results of NAEP are also published as the Nation's Report Card, and are available for the nation, states, and, in some cases, urban districts. The NAEP scores on the report card include grades four and eight 2015 reading and math scores for New Jersey which are the last scores published.

For subgroup outcomes, visit:

- Reading Grade 4 <http://www.nj.gov/education/pr/1415/naep/naep4read.html>
- Reading Grade 8 <http://www.nj.gov/education/pr/1415/naep/naep8read.html>
- Math Grade 4 <http://www.nj.gov/education/pr/1415/naep/naep4math.html>
- Math Grade 8 <http://www.nj.gov/education/pr/1415/naep/naep8math.html>

For more information, visit <http://nces.ed.gov/nationsreportcard/>

**Proficiency Percentages**

Subject	Grade	State/Nation	Below Basic	Basic	Proficient	Advanced
Reading	Grade 4	State (NJ)	25	33	31	12
	Grade 4	Nation	31	33	27	9
	Grade 8	State (NJ)	20	39	35	6
	Grade 8	Nation	24	42	31	4
Math	Grade 4	State (NJ)	14	39	38	9
	Grade 4	Nation	18	42	33	7
	Grade 8	State (NJ)	21	32	30	16
	Grade 8	Nation	29	38	25	8

**ACADEMIC ACHIEVEMENT**

CUMBERLAND  
MAURICE RIVER TWP

GRADE SPAN PK-08

MAURICE RIVER TOWNSHIP SCHOOL DISTRICT  
3593 RT 47  
PORT ELIZABETH, NJ 08348-0464

**NJASK Results - Science Grade Level - 04**

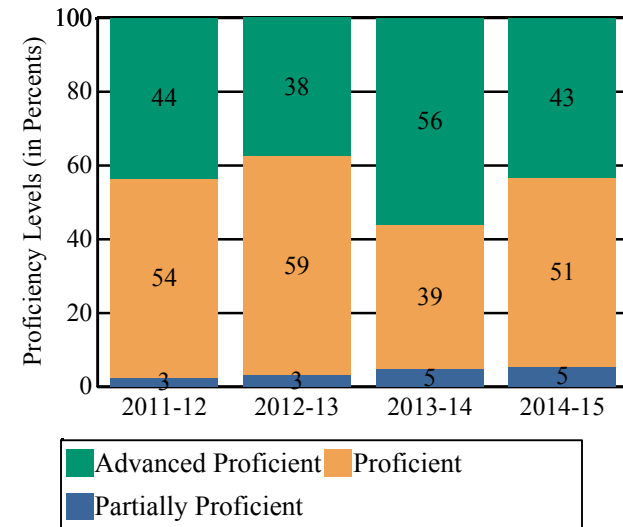
This table presents the grade level proficiency results, as measured by NJASK, in Advanced Proficient, Proficient, and Partially Proficient categories for all appropriate subgroups.

Subgroups	Advanced Proficient	Proficient	Partially Proficient
Schoolwide	43%	51%	5%
White	48%	45%	6%
African American	-	-	-
Hispanic	-	-	-
American Indian	-	-	-
Asian	-	-	-
Two or More Races	-	-	-
Students with Disability	-	-	-
English Language Learners	-	-	-
Economically Disadvantaged Students	28%	61%	11%

Data is presented for subgroups when the count is high enough under ESEA Waiver suppression rules.

**NJASK Proficiency Trends - Science - Grade Level - 04**

This graph presents the grade level outcomes in the categories of Advanced Proficient, Proficient, and Partially Proficient over the last four years.



**ACADEMIC ACHIEVEMENT**

CUMBERLAND

MAURICE RIVER TWP

GRADE SPAN PK-08

MAURICE RIVER TOWNSHIP SCHOOL DISTRICT

3593 RT 47

PORT ELIZABETH, NJ 08348-0464

**NJASK Results - Science Grade Level - 08**

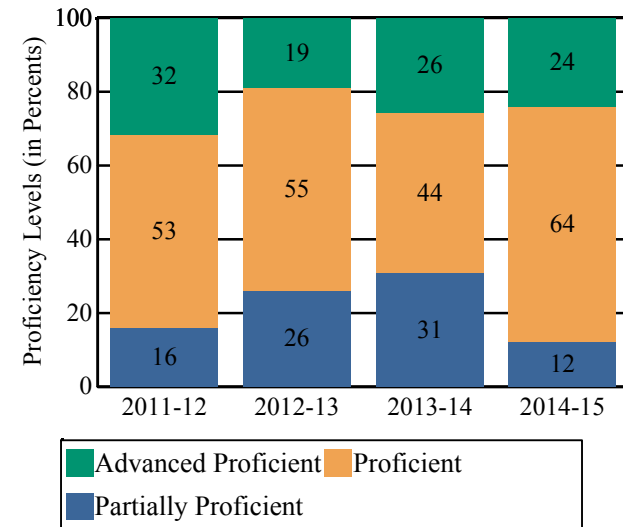
**NJASK Proficiency Trends - Science - Grade Level - 08**

This table presents the grade level proficiency results, as measured by NJASK, in Advanced Proficient, Proficient, and Partially Proficient categories for all appropriate subgroups.

This graph presents the grade level outcomes in the categories of Advanced Proficient, Proficient, and Partially Proficient over the last four years.

Subgroups	Advanced Proficient	Proficient	Partially Proficient
Schoolwide	24%	64%	12%
White	23%	66%	11%
African American	-	-	-
Hispanic	-	-	-
American Indian	-	-	-
Asian	-	-	-
Two or More Races	-	-	-
Students with Disability	-	-	-
English Language Learners	-	-	-
Economically Disadvantaged Students	8%	67%	25%

Data is presented for subgroups when the count is high enough under ESEA Waiver suppression rules.



Students in both elementary and middle schools begin to demonstrate college readiness behaviors long before they even enter high school. Among the behaviors that research has shown to be indicative of successfully graduating high school is regularly attending school. For all elementary and middle schools, this includes the percentage of students that are chronically absent each year, defined as missing more than 10% of possible school days. Also presented is the percentage of students participating in Visual and Performing Arts coursework and Algebra I course outcomes.

### Algebra I Course Enrollment

This table presents the count of students in this school who were reported in the Algebra I course code in NJSMART and the count of students who took the Algebra I test of PARCC.

Algebra I Enrollment Count	Algebra I PARCC Test Count
22	22

### Algebra I Test Taking

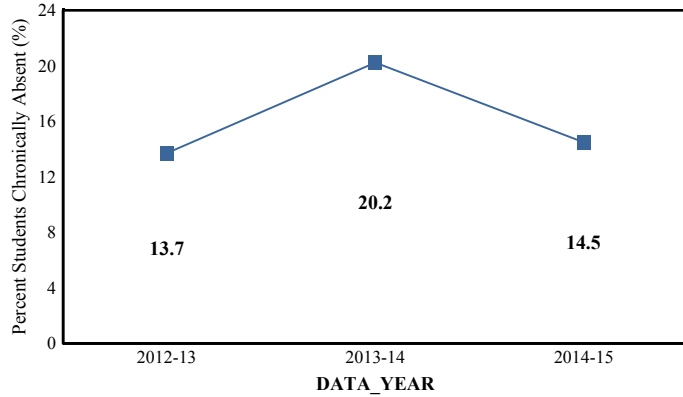
This table presents the percentage of students, as reported in NJSMART, who earned a C or higher in their Algebra I course and the percentage of students who met or exceeded expectation on the Algebra I test of PARCC.

Algebra I Percent C or Better	Algebra I PARCC Percent Met or Exceeded Expectation
100.0%	54.5%

- Data Suppressed to protect the confidentiality of students

**Chronic Absenteeism Trend**

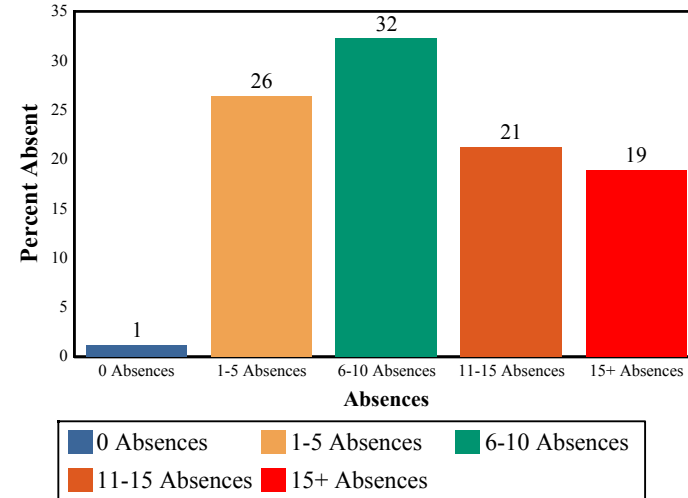
This graph presents the percentage of the enrolled students who were chronically absent for the past three years.



<b>Chronic Absenteeism for 2014-15</b>	<b>14.49%</b>
--	---------------

**Absenteeism**

The chart below presents the percentage of students who were absent in each category of absence: 0 absences, 1- 5 absences, 6 - 10 absences, 11 - 15 absences, and more than 15 absences. An absence is defined as being 'not present' and includes the days missed regardless of whether they were determined to be excused or unexcused by the school.



**Visual and Performing Arts**

The chart below contains the percentage of students who were enrolled in at least one Dance, Drama/Theater, Music or Visual Arts class in this school. The last row shows the percentage of students who were enrolled in any Visual and Performing Arts classes in the school.

Percent of Students Enrolled	School	State
Dance	N/R	1.6%
Drama/Theater	N/R	3.9%
Music	100.0%	66.0%
Visual Arts	100.0%	71.1%
<b>Total: All Visual and Performing Arts</b>	100.0%	89.8%

N/R - Data Not Reported

**STUDENT GROWTH**

**CUMBERLAND**

**MAURICE RIVER TWP**

**GRADE SPAN PK-08**

**MAURICE RIVER TOWNSHIP SCHOOL DISTRICT**

3593 RT 47

**PORT ELIZABETH, NJ 08348-0464**

This section of the performance report presents data about student growth, utilizing the Student Growth Percentile Methodology (SGP). SGP creates a measure of how students progressed in grades 4 through 8 in Language Arts Literacy and in grades 4 through 7 in Math when compared to other students with a similar test score history. A short video explaining the methodology can be found here: <http://www.state.nj.us/education/njsmart/performance/>

The below chart consist of five columns with measures. The first column - Schoolwide Performance - presents the schoolwide median growth score in either English Language Arts/Literacy or Mathematics for all students in the school. The second column - Peer Percentile - indicates how the school's growth performance compares to its group of peer schools. The third column - Statewide Percentile - indicates how a school compares to schools across the state. The last column - Met Target? - indicates whether the school's performance met or exceeded the statewide target, which was set to 35.

The fourth row presents the averages of the peer school percentiles, the averages of statewide percentiles, the percentage of statewide targets met.

Student Growth Indicators	Schoolwide Performance	Peer Percentile	Statewide Percentile	Statewide Target	Met Target?
Student Growth on Language Arts	32	13	8	35	<b>NO</b>
Student Growth on Math	26	7	3	35	<b>NO</b>
		10	6		0%

**Student Growth**

This table presents for all students with growth scores the interaction between their performance on PARCC and their growth scores. For example, in the top left cell the percentage of students who are both in Level 1 - Did not yet meet expectations AND also demonstrating low growth is displayed.

**Language Arts**

(Expectations)	GROWTH		
	Low	Typical	High
<b>Did Not Yet Meet</b>	11%	0%	0%
<b>Partially Met</b>	17%	3%	3%
<b>Approached</b>	12%	9%	3%
<b>Met</b>	14%	14%	11%
<b>Exceeded</b>	0%	0%	2%

**Math**

(Expectations)	GROWTH		
	Low	Typical	High
<b>Did Not Yet Meet</b>	11%	1%	0%
<b>Partially Met</b>	22%	6%	2%
<b>Approached</b>	17%	14%	5%
<b>Met</b>	8%	9%	4%
<b>Exceeded</b>	0%	1%	0%

**Low Growth** is defined as an Student Growth Percentile score less than 35.

**Typical Growth** is defined as an Student Growth Percentile score between 35 and 65.

**High Growth** is defined as a Student Growth Percentile score higher than 65.

**WITHIN SCHOOL ACHIEVEMENT GAP**

MAURICE RIVER TOWNSHIP SCHOOL DISTRICT

CUMBERLAND

3593 RT 47

MAURICE RIVER TWP

GRADE SPAN PK-08

PORT ELIZABETH, NJ 08348-0464

This section of the performance report presents data about the achievement gap that exists within a school - as measured by the difference between the students' scale scores at the 25th and 75th percentile in the school, the Interquartile Range (IQR). Taken together with an understanding of the overall and average achievement levels in the school, the IQR furthers an understanding of the range of student outcomes that exist in a school. A school gap smaller than the state gap indicates that the school's range of student outcomes is narrower than the state's while a school gap larger than the state gap indicates that the school's range of student outcomes is broader than the state's.

**Grade Level - 03**

**PARCC Language Arts 25th %ile vs 75th%ile**

This table presents the scale scores associated with students at the bottom (0th percentile), the 25th percentile, the 50th percentile, the 75th percentile and the top (99th percentile) of school's distribution.

Percentile	School Scale Score	State Scale Score
99th	782	850
75th	741	770
50th	715	743
25th	680	715
0th	650	650

	Scale Score Gap - School	Scale Score Gap - State
25th vs 75th Gap	61	55

**Grade Level - 03**

**PARCC MATH 25th %ile vs 75th%ile**

This table presents the scale scores associated with students at the bottom (0th percentile), the 25th percentile, the 50th percentile, the 75th percentile and the top (99th percentile) of school's distribution.

Percentile	School Scale Score	State Scale Score
99th	781	850
75th	752	767
50th	733	745
25th	699	722
0th	667	650

	Scale Score Gap - School	Scale Score Gap - State
25th vs 75th Gap	53	45

**WITHIN SCHOOL ACHIEVEMENT GAP**

CUMBERLAND  
MAURICE RIVER TWP

GRADE SPAN PK-08

MAURICE RIVER TOWNSHIP SCHOOL DISTRICT  
3593 RT 47  
PORT ELIZABETH, NJ 08348-0464

**Grade Level - 04**

**PARCC Language Arts 25th %ile vs 75th%ile**

This table presents the scale scores associated with students at the bottom (0th percentile), the 25th percentile, the 50th percentile, the 75th percentile and the top (99th percentile) of school's distribution.

Percentile	School Scale Score	State Scale Score
99th	786	850
75th	758	773
50th	736	750
25th	717	728
0th	650	650

	Scale Score Gap - School	Scale Score Gap - State
25th vs 75th Gap	41	45

**Grade Level - 05**

**PARCC Language Arts 25th %ile vs 75th%ile**

This table presents the scale scores associated with students at the bottom (0th percentile), the 25th percentile, the 50th percentile, the 75th percentile and the top (99th percentile) of school's distribution.

Percentile	School Scale Score	State Scale Score
99th	801	850
75th	766	773
50th	747	751
25th	717	728
0th	687	650

	Scale Score Gap - School	Scale Score Gap - State
25th vs 75th Gap	49	45

**Grade Level - 04**

**PARCC MATH 25th %ile vs 75th%ile**

This table presents the scale scores associated with students at the bottom (0th percentile), the 25th percentile, the 50th percentile, the 75th percentile and the top (99th percentile) of school's distribution.

Percentile	School Scale Score	State Scale Score
99th	782	850
75th	746	764
50th	731	742
25th	714	721
0th	671	650

	Scale Score Gap - School	Scale Score Gap - State
25th vs 75th Gap	32	43

**Grade Level - 05**

**PARCC MATH 25th %ile vs 75th%ile**

This table presents the scale scores associated with students at the bottom (0th percentile), the 25th percentile, the 50th percentile, the 75th percentile and the top (99th percentile) of school's distribution.

Percentile	School Scale Score	State Scale Score
99th	782	850
75th	752	763
50th	733	743
25th	720	723
0th	696	650

	Scale Score Gap - School	Scale Score Gap - State
25th vs 75th Gap	32	40

**WITHIN SCHOOL ACHIEVEMENT GAP**

CUMBERLAND

MAURICE RIVER TWP

MAURICE RIVER TOWNSHIP SCHOOL DISTRICT

3593 RT 47

PORT ELIZABETH, NJ 08348-0464

GRADE SPAN PK-08

**Grade Level - 06**

**PARCC Language Arts 25th %ile vs 75th%ile**

This table presents the scale scores associated with students at the bottom (0th percentile), the 25th percentile, the 50th percentile, the 75th percentile and the top (99th percentile) of school's distribution.

Percentile	School Scale Score	State Scale Score
99th	792	850
75th	762	770
50th	741	749
25th	716	726
0th	668	650

	Scale Score Gap - School	Scale Score Gap - State
25th vs 75th Gap	46	44

**Grade Level - 07**

**PARCC Language Arts 25th %ile vs 75th%ile**

This table presents the scale scores associated with students at the bottom (0th percentile), the 25th percentile, the 50th percentile, the 75th percentile and the top (99th percentile) of school's distribution.

Percentile	School Scale Score	State Scale Score
99th	787	850
75th	756	776
50th	738	751
25th	713	724
0th	650	650

	Scale Score Gap - School	Scale Score Gap - State
25th vs 75th Gap	43	52

**Grade Level - 06**

**PARCC MATH 25th %ile vs 75th%ile**

This table presents the scale scores associated with students at the bottom (0th percentile), the 25th percentile, the 50th percentile, the 75th percentile and the top (99th percentile) of school's distribution.

Percentile	School Scale Score	State Scale Score
99th	782	850
75th	748	763
50th	731	742
25th	712	721
0th	687	650

	Scale Score Gap - School	Scale Score Gap - State
25th vs 75th Gap	36	42

**Grade Level - 07**

**PARCC MATH 25th %ile vs 75th%ile**

This table presents the scale scores associated with students at the bottom (0th percentile), the 25th percentile, the 50th percentile, the 75th percentile and the top (99th percentile) of school's distribution.

Percentile	School Scale Score	State Scale Score
99th	778	850
75th	749	759
50th	737	740
25th	710	720
0th	685	650

	Scale Score Gap - School	Scale Score Gap - State
25th vs 75th Gap	39	39

**WITHIN SCHOOL ACHIEVEMENT GAP**

CUMBERLAND  
MAURICE RIVER TWP

MAURICE RIVER TOWNSHIP SCHOOL DISTRICT  
3593 RT 47  
PORT ELIZABETH, NJ 08348-0464

GRADE SPAN PK-08

**Grade Level - 08**

**PARCC Language Arts 25th %ile vs 75th%ile**

This table presents the scale scores associated with students at the bottom (0th percentile), the 25th percentile, the 50th percentile, the 75th percentile and the top (99th percentile) of school's distribution.

Percentile	School Scale Score	State Scale Score
99th	804	850
75th	756	777
50th	745	751
25th	707	723
0th	650	650

	Scale Score Gap - School	Scale Score Gap - State
25th vs 75th Gap	49	54

**Grade Level - 08**

**PARCC MATH 25th %ile vs 75th%ile**

This table presents the scale scores associated with students at the bottom (0th percentile), the 25th percentile, the 50th percentile, the 75th percentile and the top (99th percentile) of school's distribution.

Percentile	School Scale Score	State Scale Score
99th	N/A	850
75th	N/A	748
50th	N/A	726
25th	N/A	704
0th	N/A	650

	Scale Score Gap - School	Scale Score Gap - State
25th vs 75th Gap	N/A	44

**SCHOOL CLIMATE**

CUMBERLAND  
MAURICE RIVER TWP

MAURICE RIVER TOWNSHIP SCHOOL DISTRICT  
3593 RT 47  
PORT ELIZABETH, NJ 08348-0464

GRADE SPAN PK-08

**Length of School Day**

This table presents the amount of time a school is in session for a typical student on a normal school day.

	School
2014-15	6 Hrs. 30 Mins.

**Student Suspension Rate**

This table presents the percentage of students who were suspended one or more times during the school year.

	School
2014-15	5.2%

**Instructional Time**

This table presents the amount of time that a typical student is engaged in instructional activities under the supervision of a certified teacher.

2014-15	School
Full Time	5 Hrs. 20 Mins.
Shared Time	0 Hrs. 0 Mins.

**Student Expulsions**

This table presents the number of students who were expelled from the school and district during the school year.

	School
2014-15	0

**Student to Staff Ratio**

This table presents the count of students per faculty member or administrator in the school. All staff are counted in full-time equivalents.

2014-15	School
Faculty	12
Administrators	212

**SCHOOL PEER GROUP**

CUMBERLAND

MAURICE RIVER TWP

GRADE SPAN PK-08

MAURICE RIVER TOWNSHIP SCHOOL DISTRICT

3593 RT 47

PORT ELIZABETH, NJ 08348-0464

This table presents the list of peer schools in alphabetical order by county name that was created specifically for this school (highlighted in yellow). Peer schools are drawn from across the state and represent schools that have similar grade configurations and that are educating students of similar demographic characteristics, as measured by enrollment in Free/Reduced Lunch Programs, Limited English Proficiency or Special Education Programs.

<u>COUNTY NAME</u>	<u>DISTRICT NAME</u>	<u>SCHOOL NAME</u>	<u>CDS CODE</u>	<u>GRADES PAN</u>	<u>ECONOMICALLY DISADVANTAGED</u>	<u>ENGLISH LANGUAGE LEARNERS</u>	<u>SPECIAL EDUCATION</u>
ATLANTIC	BRIGANTINE CITY	BRIGANTINE NORTH MIDDLE SCHOOL	01-0570-030	05-08	48.7%	1.1%	16.7%
ATLANTIC	HAMILTON TWP	WILLIAM DAVIES MIDDLE SCHOOL	01-1940-120	06-08	44.6%	1.2%	17.8%
ATLANTIC	VENTNOR CITY	VENTNOR MIDDLE SCHOOL	01-5350-040	05-08	67.7%	3.6%	15.6%
BERGEN	LYNDHURST TWP	JEFFERSON SCHOOL	03-2860-080	04-08	32.8%	1.5%	24.3%
BURLINGTON	DELANCO TWP	WALNUT STREET SCHOOL	05-1030-060	06-08	38.7%	0%	16.8%
BURLINGTON	PEMBERTON TWP	HELEN A. FORT/MARCUS NEWCOMB MIDDLE SCHOOL	05-4050-050	06-08	49.4%	0.6%	16%
CAMDEN	GLOUCESTER TWP	GLEN LANDING MIDDLE SCHOOL	07-1780-055	06-08	33%	0%	18.8%
CAMDEN	MAGNOLIA BORO	MAGNOLIA	07-2890-050	PK-08	45.6%	0.5%	15.5%
CAPE MAY	NORTH WILDWOOD CITY	MARGARET MACE ELEMENTARY SCHOOL	09-3680-060	PK-08	48%	2.3%	21.5%
CHARTERS	GRAY CS	THE GRAY CHARTER SCHOOL	80-6665-930	KG-08	64.7%	0%	4%
CHARTERS	JERSEY CITY GOLDEN DOOR	JERSEY CITY GOLDEN DOOR CHARTER SCHOOL	80-6915-950	PK-08	66.2%	2.3%	11.9%
CUMBERLANI	DOWNE TWP	DOWNE TOWNSHIP ELEMENTARY SCHOOL	11-1120-045	PK-08	47.1%	0%	15.2%
CUMBERLANI	MAURICE RIVER TWP	MAURICE RIVER TOWNSHIP SCHOOL DISTRICT	11-3050-065	PK-08	43.4%	0.2%	15.8%
ESSEX	BELLEVILLE TOWN	BELLEVILLE MIDDLE SCHOOL	13-0250-025	06-08	58.7%	2.8%	14.8%
GLOUCESTER	GLASSBORO	GLASSBORO INTERMEDIATE SCHOOL	15-1730-078	07-08	49%	2%	19.7%
HUDSON	BAYONNE CITY	MARY J. DONOHOE #4	17-0220-080	PK-08	62%	0%	6.2%
HUDSON	HUDSON COUNTY VOCATIONAL	EXPLORE 2000 MIDDLE SCHOOL	17-2295-090	06-08	46.2%	0%	13.5%
HUDSON	NORTH BERGEN TWP	HORACE MANN ELEMENTARY SCHOOL	17-3610-070	01-08	65.1%	2.6%	11.3%
HUNTERDON	HAMPTON BORO	HAMPTON BOROUGH SCHOOL DISTRICT	19-1970-050	PK-08	47.2%	0%	15.3%
MERCER	HAMILTON TWP	ALBERT E GRICE MIDDLE SCHOOL	21-1950-070	06-08	44.9%	1.2%	17.7%
MIDDLESEX	NEW BRUNSWICK CITY	WOODROW WILSON ELEMENTARY SCHOOL	23-3530-140	PK-08	68%	3.2%	14.2%

**SCHOOL PEER GROUP**

MAURICE RIVER TOWNSHIP SCHOOL DISTRICT

CUMBERLAND

3593 RT 47

MAURICE RIVER TWP

GRADE SPAN PK-08

PORT ELIZABETH, NJ 08348-0464

MIDDLESEX	WOODBIDGE TWP	FORDS MIDDLE SCHOOL	23-5850-070	06-08	51.3%	0.1%	11.7%
MONMOUTH	UNION BEACH	MEMORIAL SCHOOL	25-5230-050	PK-08	36.4%	0.2%	18.8%
MORRIS	WHARTON BORO	ALFRED C. MACKINNON MIDDLE SCHOOL	27-5770-030	06-08	48.3%	1.7%	17.5%
OCEAN	TOMS RIVER REGIONAL	TOMS RIVER INTERMEDIATE SCHOOL SOUTH	29-5190-061	06-08	35.8%	0%	17.7%
PASSAIC	CLIFTON CITY	WOODROW WILSON MIDDLE SCHOOL	31-0900-070	06-08	50.3%	0.6%	15.9%
PASSAIC	HAWTHORNE BORO	LINCOLN MIDDLE SCHOOL	31-2100-070	06-08	31.6%	1.7%	25.5%
SALEM	PITTSBORO TWP	PITTSBORO TOWNSHIP MIDDLE SCHOOL	33-4150-070	06-08	36.6%	0%	19.2%
SALEM	WOODSTOWN-PILESBORO REG	WOODSTOWN MIDDLE SCHOOL	33-5910-070	06-08	36.7%	0.7%	21.1%
SOMERSET	MANVILLE BORO	ALEXANDER BATCHO INTERMEDIATE SCHOOL	35-3000-065	06-08	48.2%	3%	20.1%
SUSSEX	NEWTON TOWN	HALSTED MIDDLE SCHOOL	37-3590-060	05-08	47.5%	1%	15%