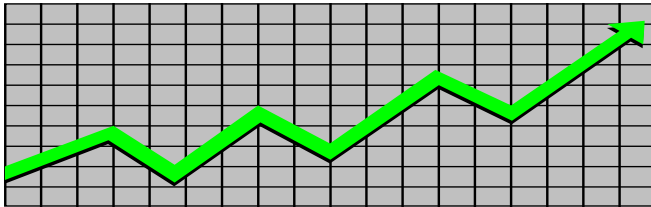


State of New Jersey
Department of Human Services
Division of Family Development

CURRENT PROGRAM STATISTICS



December 2025
Natasha Johnson, Assistant Commissioner

TABLE OF CONTENTS

HIGHLIGHTS:

WFNJ/TANF..... **ii**
NJ SNAP..... **ii**
EMERGENCY ASSISTANCE..... **ii**
GENERAL ASSISTANCE..... **iii**
GA Emergency Assistance..... iii
GA Program..... iii
CHILD SUPPORT SERVICES..... **iii**
WORK FIRST NEW JERSEY (WFNJ)..... **iii**
STATISTICS- BY STATE & COUNTY..... **1**
Table 1: WFNJ/TANF Families & Persons (NJ Statewide) December 2023 to 2025..... 1
Table 2: WFNJ/TANF Families (by County)- December 2025..... 2
Table 2B: WFNJ/TANF Persons, Adults, & Children (by County)- December 2025..... 3
Table 3: TANF Work Participation Rates Over 12 Month Period (by County)- December 2025..... 4
Table 4: TANF Work Participation Rates Over 12 Month Period (NJ Statewide)- December 2025.. 5
Table 5: NJ SNAP Households/Persons (NJ Statewide) December 2023 to 2025..... 6
Table 6: NJ SNAP Recipient Trends (NJ Statewide) December 2023 to 2025..... 7
Table 7: NJ SNAP Households/Persons (by County)- December 2025..... 8
Table 8: Emergency Assistance Program (NJ Statewide) December 2023 to 2025..... 9
Table 9: Emergency Assistance Program (by County)- December 2025..... 10
Table 10: General Assistance Program (NJ Statewide) December 2023 to 2025..... 11
Table 11: General Assistance Program (by County)- December 2025..... 12
Table 12: Child Support Services Distributions (NJ Statewide) FFY 2026..... 13
Table 13: Child Support Services Paternities Established- December 2025..... 14
Table 14: Child Support Services Cases With Orders- December 2025..... 15
Table 15: Child Support Services Collections On Current Support- December 2025..... 16
Table 16: Child Support Services Cases With Payments On Arrears- December 2025..... 17
Table 17: WFNJ Statistical Summary- December 2025..... 18
ACRONYMS..... **19**
EXPLANATORY NOTES..... **20**
WFNJ Statistical Summary (Table 17)..... 20

DIVISION OF FAMILY DEVELOPMENT CURRENT PROGRAM STATISTICS DECEMBER 2025

Each month the Division of Family Development publishes its program statistics for: WFNJ/TANF, NJ SNAP, Emergency Assistance, General Assistance, and Child Support Services. When possible, information is provided separately for children and adults. Many tables also provide trend data with information broken down by county for readers to consider. This report is compiled and prepared by The Bureau of Research & Reporting.

WFNJ/TANF

- As of the end of December, the TANF caseload had decreased by 1970 cases, from 11,277 in December 2024 to 9,307 in December 2025; a decrease of -17.5%.
- The counties with caseloads that increased the most since December 2024 were Burlington (11%), Atlantic (8%), and Cape May (4.2%).
- The counties with caseloads that decreased the most since December 2024 were Union (-41.3%), Essex (-40.2%), and Sussex (-33.3%).
- Of the WFNJ/TANF cases, 1,954 or 21% were child-only in December 2025.
- The counties with the most child-only cases were Camden (352), Hudson (257), and Atlantic (165)
- Hudson (4,430), Camden (3,243), and Essex (2,466) counties had the greatest number of persons receiving TANF in December 2025.

NJ SNAP (Formerly FOOD STAMPS)

- In December 2025, there were 430,099 households receiving NJ SNAP benefits. The number of NJ SNAP households decreased by 13,101 or -3%, since December 2024.
- There were 797,463 persons receiving NJ SNAP benefits as of December 2025; a decrease of 32,005 or -3.9% since December 2024.
- The counties having the highest SNAP caseload increase since December 2024 were Burlington (9.8%), Somerset (3.1%), and Gloucester (1.9%).
- The counties having the highest SNAP caseload decrease since December 2024 were Essex (-10%), Mercer (-6.4%), and Atlantic (-5.6%).

EMERGENCY ASSISTANCE

- There were 1,858 TANF families receiving Emergency Assistance (EA) in December 2025; an increase of 68 or 3.8% since December 2024.
- In December 2025, EA payments were made for 603 SSI recipients.

DIVISION OF FAMILY DEVELOPMENT CURRENT PROGRAM STATISTICS DECEMBER 2025

- There were 2,840 GA cases with Emergency Assistance payments in December 2025; an increase of 588 or 26.1% since December 2024.
- The counties that showed the highest percent increase in Emergency Assistance payments were Atlantic (171.1%), Salem (157.1%), and Hudson (119.1%).
- The counties that showed the highest percent decrease in Emergency Assistance payments were Cape May (-31.5%), Somerset (-30.6%), and Sussex (-27.3%).

GENERAL ASSISTANCE

- The total numbers of cases receiving GA has increased from 16,388 to 17,746 since December 2024; an increase of 8.3%.
- There were 13,474 Employable GA and 4,272 Unemployable GA cases in December 2025.
- The counties that showed a percent increase for GA cases were Burlington (47.2%), Warren (34.6%), and Essex (22.8%) since December 2024.
- The counties that showed the highest percent decrease for GA cases since December 2024 were Sussex (-22.2%), Bergen (-11.6%), and Morris (-10.7%).
- In December 2025, GA cases showed a -0.49% decrease since November 2025.

CHILD SUPPORT SERVICES (QUARTERLY REPORT)

- The total collection for the Child Support Services Program was about \$251 million from October 2025 to 12/31/2025 -; a decrease of -2.48% over the same period from FFY 2025.
- Total distributions decreased -2% from 12/31/2024 -.

WORK FIRST NEW JERSEY (WFNJ)

- During the report month of December 2025, there were 484 families in which at least one member was employed and an additional 138 families whose WFNJ assistance cases were closed due to employment - related earnings.
- The three counties with the greatest number of employed active WFNJ recipients were: Hudson (106), Essex (72), and Camden (64).
- There were 203 former TANF cases receiving post-TANF support in the form of child care assistance.

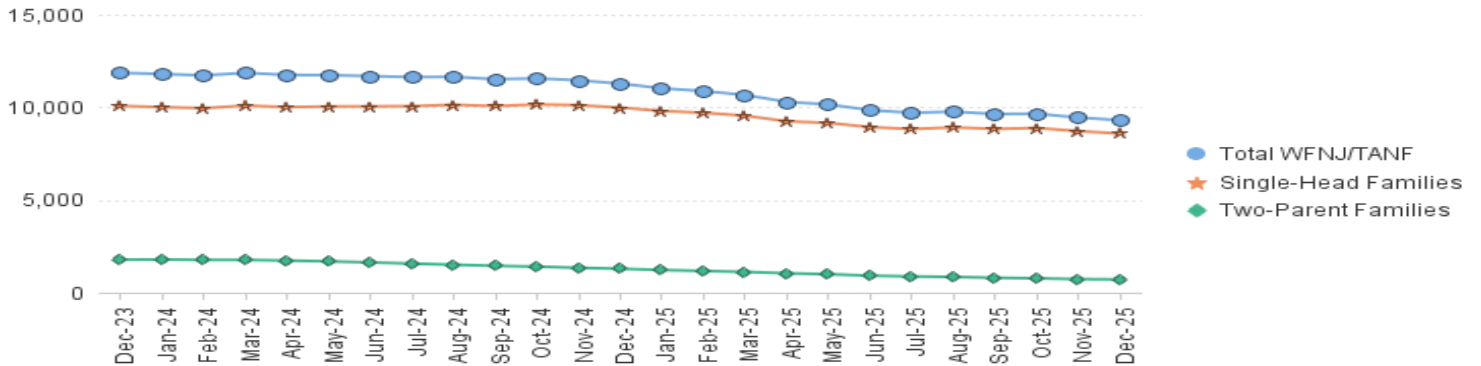
TABLE 1: WFNJ/TANF PROGRAM

STATEWIDE NUMBER OF APPLICATIONS AND TERMINATIONS DURING DECEMBER 2025
 NUMBER OF ELIGIBLE FAMILIES & PERSONS RECEIVING WFNJ/TANF FOR DECEMBER 2025

DECEMBER 2023 THROUGH DECEMBER 2025

		Cases Added	Cases Closed	Child-Only Cases ‡	Total Single-Head Families	2-Parent Families	Total WFNJ/TANF Families	%CHNG (1 Yr.)	Total Persons	%CHNG (1 Yr.)	Adults	Children
2023	DEC	900	836	2,484	10,080	1,781	11,861	6.4%	32,067	6.7%	11,158	20,909
2023	Average	831	844	2,501	9,711	1,576	11,287		30,464		10,362	20,102
2024	JAN	819	879	2,456	10,010	1,790	11,800	7.1%	31,992	7.8%	11,134	20,858
	FEB	743	865	2,451	9,953	1,768	11,721	5.6%	31,775	5.8%	11,038	20,737
	MAR	784	797	2,453	10,095	1,767	11,862	6.4%	32,088	6.7%	11,176	20,912
	APR	832	944	2,414	10,014	1,733	11,747	6.0%	31,674	6.2%	11,066	20,608
	MAY	805	869	2,435	10,047	1,689	11,736	5.9%	31,556	5.7%	10,990	20,566
	JUN	816	920	2,444	10,054	1,631	11,685	5.3%	31,338	4.7%	10,872	20,466
	JUL	802	853	2,383	10,064	1,569	11,633	3.7%	31,312	3.6%	10,819	20,493
	AUG	864	932	2,370	10,138	1,508	11,646	3.0%	31,376	2.8%	10,784	20,592
	SEP	759	890	2,345	10,066	1,448	11,514	2.3%	30,858	1.4%	10,617	20,241
	OCT	894	894	2,352	10,157	1,406	11,563	0.4%	30,962	-0.6%	10,617	20,345
	NOV	797	936	2,336	10,115	1,342	11,457	-2.5%	30,753	-3.2%	10,463	20,290
	DEC	670	849	2,311	9,987	1,290	11,277	-4.9%	30,319	-5.5%	10,256	20,063
2024	Average	799	886	2,396	10,058	1,578	11,637		31,334		10,819	20,514
2025	JAN	732	1,001	2,289	9,802	1,226	11,028	-6.5%	29,582	-7.5%	9,965	19,617
	FEB	731	914	2,258	9,706	1,171	10,877	-7.2%	29,196	-8.1%	9,790	19,406
	MAR	619	872	2,227	9,543	1,120	10,663	-10.1%	28,685	-10.6%	9,556	19,129
	APR	581	1,000	2,133	9,246	1,046	10,292	-12.4%	27,686	-12.6%	9,205	18,481
	MAY	712	962	2,154	9,158	997	10,155	-13.5%	27,196	-13.8%	8,998	18,198
	JUN	597	907	2,118	8,931	914	9,845	-15.7%	26,193	-16.4%	8,641	17,552
	JUL	679	885	2,020	8,830	876	9,706	-16.6%	25,819	-17.5%	8,562	17,257
	AUG	727	801	2,042	8,916	850	9,766	-16.1%	25,922	-17.4%	8,574	17,348
	SEP	675	801	2,013	8,836	803	9,639	-16.3%	25,520	-17.3%	8,429	17,091
	OCT	744	764	2,010	8,884	771	9,655	-16.5%	25,600	-17.3%	8,416	17,184
	NOV	534	795	1,989	8,714	731	9,445	-17.6%	24,973	-18.8%	8,187	16,786
	DEC	593	730	1,954	8,591	716	9,307	-17.5%	24,588	-18.9%	8,069	16,519
2025	Average	660	869	2,101	9,096	935	10,032		26,747		8,866	17,881

NJ STATEWIDE
 Eligible Families Receiving WFNJ/TANF
 DECEMBER 2023 THROUGH DECEMBER 2025



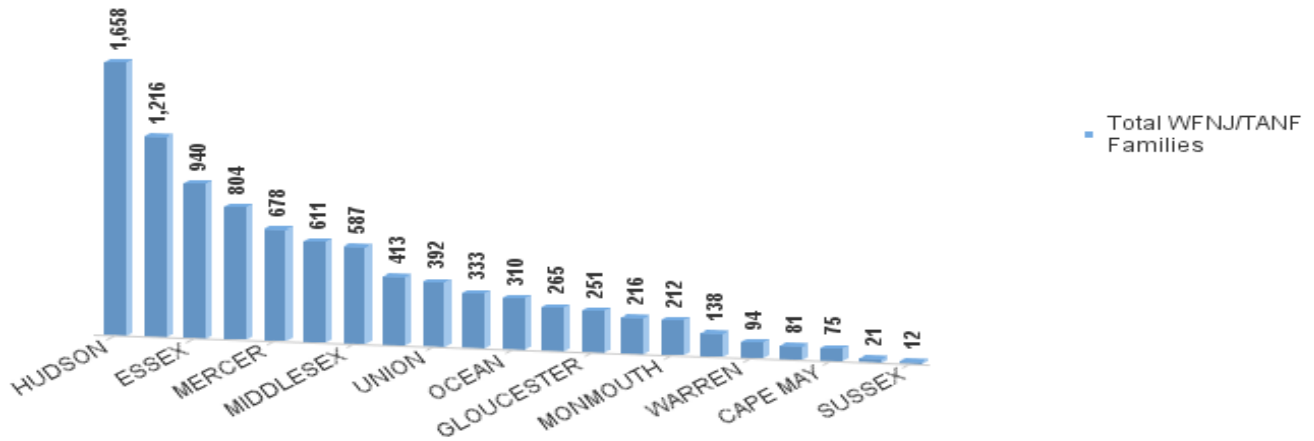
Data is derived from NJ MMIS Shared Data Warehouse Issuance files.
 Effective July 2013 this data query source was converted to the SDW

‡ Child-only cases are defined as families in which no eligible adult receives TANF program benefits, yet the family continues to be headed by at least one of the biological parents, or grandparents, or other appropriate adult.

TABLE 2:
WFNJ/TANF PROGRAM NUMBER OF APPLICATIONS AND TERMINATIONS BY COUNTY DURING DECEMBER 2025
NUMBER OF ELIGIBLE FAMILIES RECEIVING WFNJ/TANF FOR DECEMBER 2025

County	Cases Added	Cases Closed **	Child-	1-Adult	Total	2-Parent	Total	%CHNG (3 Mon)	%CHNG (1 Yr.)
			Only Cases ‡	Cases	Single-Head Families	Families	WFNJ/TANF Families		
ATLANTIC	23	23	165	407	572	39	611	1.5%	8.0% Δ
BERGEN	16	14	49	196	245	20	265	-4.3%	-13.1%
BURLINGTON	50	41	74	307	381	32	413	2.5%	11.0% Δ
CAMDEN	61	95	352	780	1,132	84	1,216	-5.4%	-17.3%
CAPE MAY	2	6	20	48	68	7	75	-2.6%	4.2% Δ
CUMBERLAND	27	27	88	231	319	14	333	-2.6%	-2.9%
ESSEX	83	101	153	695	848	92	940	-6.1%	-40.2% *
GLOUCESTER	17	18	67	174	241	10	251	-2.7%	-12.5%
HUDSON	108	104	257	1,246	1,503	155	1,658	-3.0%	-17.3%
HUNTERDON	0	0	3	14	17	4	21	-22.2%	-4.5%
MERCER	39	64	155	480	635	43	678	-4.5%	-20.1%
MIDDLESEX	32	56	156	389	545	42	587	-6.1%	-7.6%
MONMOUTH	10	18	34	167	201	11	212	-6.2%	-8.6%
MORRIS	8	7	13	58	71	10	81	0.0%	-31.9%
OCEAN	25	18	54	230	284	26	310	2.3%	-11.7%
PASSAIC	37	45	155	597	752	52	804	-3.4%	-12.3%
SALEM	12	24	23	102	125	13	138	-3.5%	-8.0%
SOMERSET	16	22	41	164	205	11	216	-4.8%	-6.1%
SUSSEX	0	3	6	5	11	1	12	-20.0%	-33.3% *
UNION	19	35	68	279	347	45	392	-6.0%	-41.3% *
WARREN	8	9	21	68	89	5	94	0.0%	1.1%
NJ Total	593	730	1,954	6,637	8,591	716	9,307	-3.6%	-17.5%

**Total WFNJ/TANF Families
 DECEMBER 2025
 By County**



Data is derived from NJ MMIS Shared Data Warehouse Issuance files.
 Effective July 2013 this data query source was converted to the SDW

‡ Child-only cases are defined as families in which no eligible adult receives TANF program benefits, yet the family continues to be headed by at least one of the biological parents, or grandparents, or other appropriate adult

** 'Cases closed' include cases that received a benefit in the prior month, but did not receive any TANF benefit for the report month.

Δ=higher caseload % change

*=lower caseload % change

TABLE 2B :

WFNJ/TANF PROGRAM

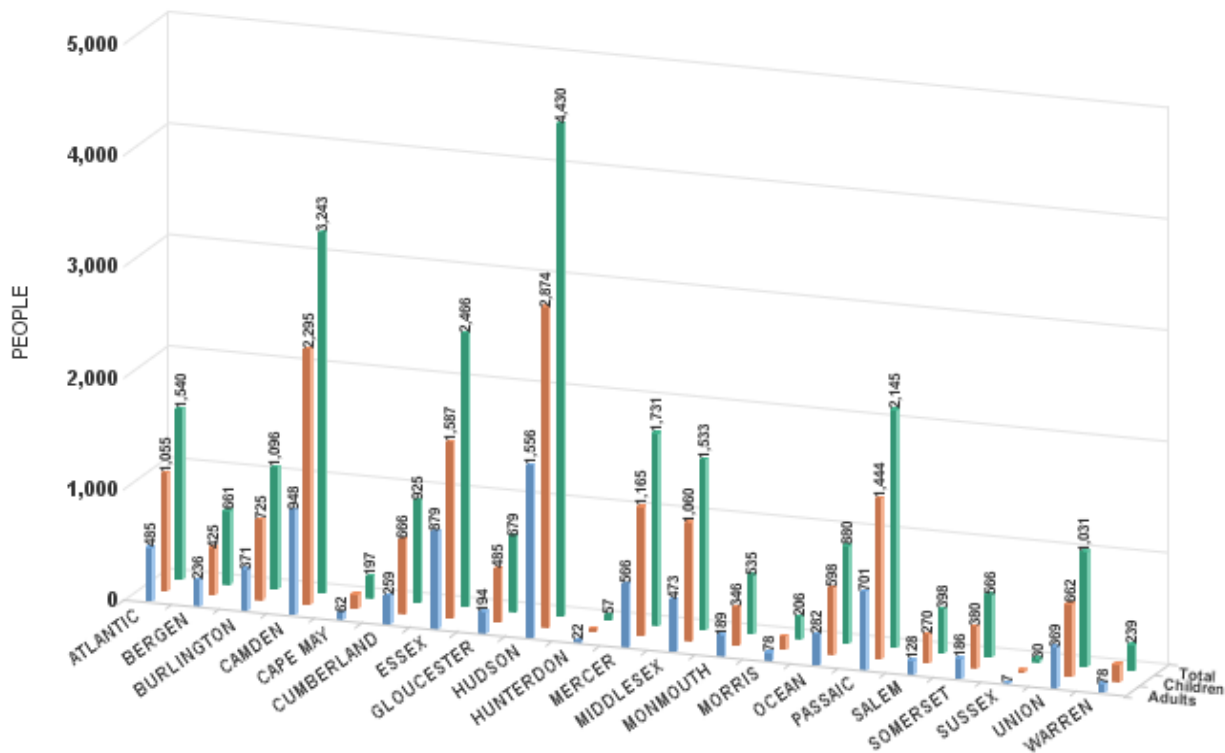
NUMBER OF PARTICIPATING PERSONS, ADULTS, AND CHILDREN BY COUNTY FOR DECEMBER 2025

PERSONS

County	Adults	Children	Child/Adult Ratio	Total Persons	% Chng (1 Yr)	Persons Per Case
ATLANTIC	485	1,055	2.18	1,540	7.5% Δ	2.52
BERGEN	236	425	1.80	661	-15.4%	2.49
BURLINGTON	371	725	1.95	1,096	8.0% Δ	2.65
CAMDEN	948	2,295	2.42	3,243	-18.9%	2.67
CAPE MAY	62	135	2.18	197	8.8% Δ	2.63
CUMBERLAND	259	666	2.57	925	-3.4%	2.78
ESSEX	879	1,587	1.81	2,466	-42.2% *	2.62
GLOUCESTER	194	485	2.50	679	-11.8%	2.71
HUDSON	1,556	2,874	1.85	4,430	-18.1%	2.67
HUNTERDON	22	35	1.59	57	-12.3%	2.71
MERCER	566	1,165	2.06	1,731	-21.9%	2.55
MIDDLESEX	473	1,060	2.24	1,533	-6.4%	2.61
MONMOUTH	189	346	1.83	535	-9.8%	2.52
MORRIS	78	128	1.64	206	-34.6% *	2.54
OCEAN	282	598	2.12	880	-14.1%	2.84
PASSAIC	701	1,444	2.06	2,145	-14.0%	2.67
SALEM	128	270	2.11	398	-8.5%	2.88
SOMERSET	186	380	2.04	566	-6.3%	2.62
SUSSEX	7	23	3.29	30	-33.3%	2.50
UNION	369	662	1.79	1,031	-43.9% *	2.63
WARREN	78	161	2.06	239	-2.4%	2.54
NJ Total	8,069	16,519	2.05	24,588	-18.9%	2.64

Δ=higher caseload % change

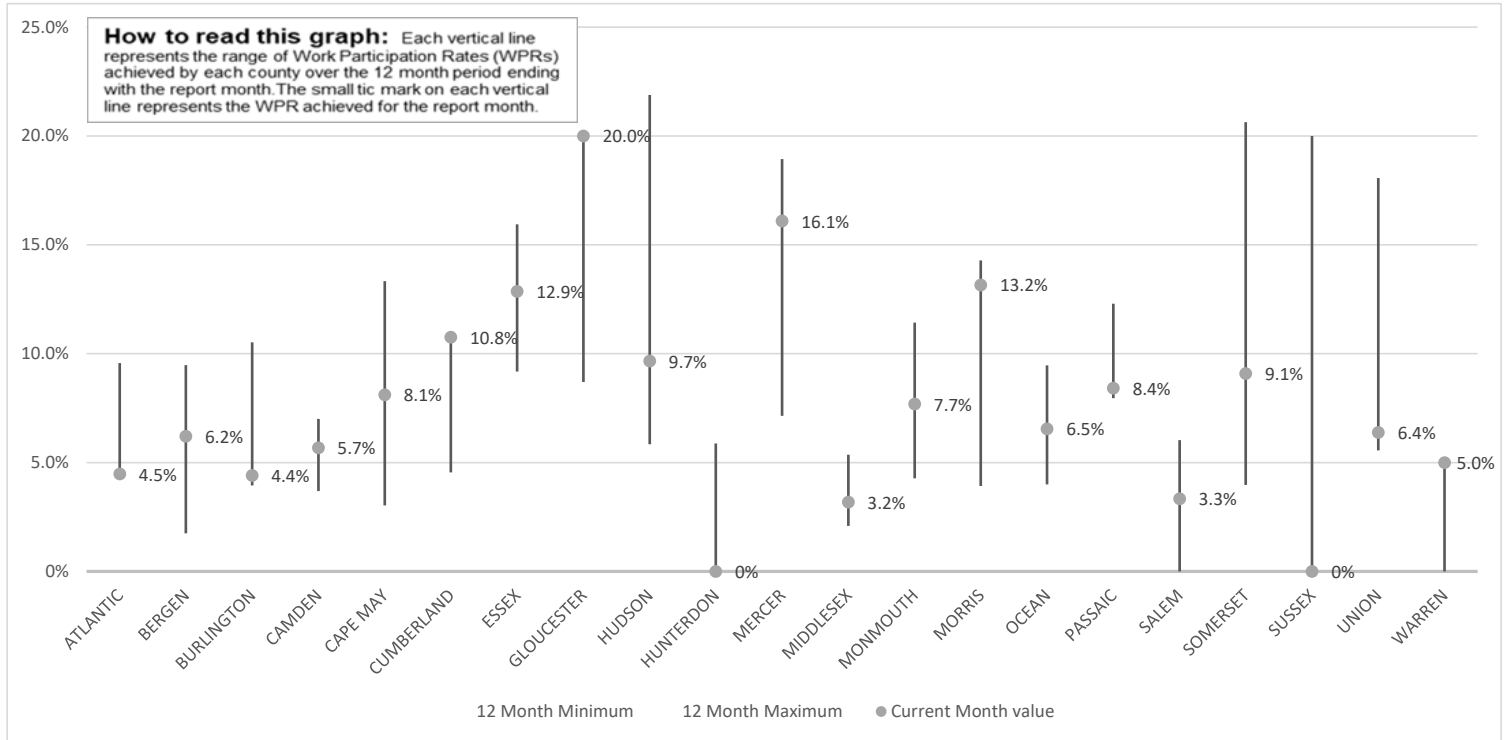
*=lower caseload % change



Data is derived from NJ MMIS Shared Data Warehouse Issuance files. Effective July 2013 this data query source was converted to the SDW

TABLE 3:

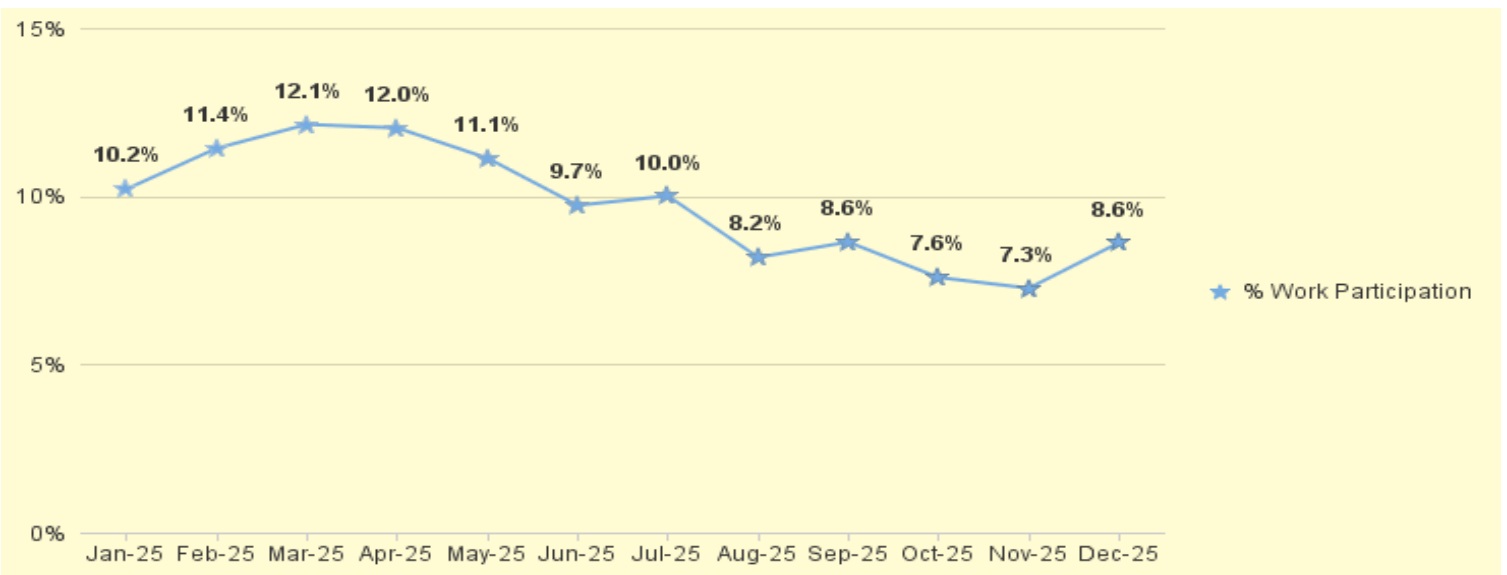
Work Participation Rates Achieved Over 12 Month Period
Ending with December 2025



Data is derived from NJ MMIS Shared Data Warehouse Issuance files.
Effective July 2013 this data query source was converted to the SDW

TABLE 4 :

WFNJ/TANF Work Participation Rates
for 12-Month Period Ending with DECEMBER 2025 Statewide



* The Work Participation rate measures the number of countable Temporary Assistance for Needs Families (TANF) participants based on federal formula. The reported rate is considered to be preliminary until officially calculated by the federal government soon after the close of each federal fiscal year.

TABLE 5 :
NJ SNAP NUMBER OF PARTICIPATING HOUSEHOLDS, PERSONS, ADULTS
(FOOD STAMPS) AND CHILDREN FOR DECEMBER 2025 (STATEWIDE)

DECEMBER 2023 THROUGH DECEMBER 2025

		HOUSEHOLDS				PERSONS				Age 60+	People with a disability
		WFNJ/ TANF	Other low income	Total	% CHNG (1 YR)	Adults	Children	TOTAL	% CHNG (1 YR)		
2023	DEC	12,360	413,594	425,954	5.4%	464,039	351,241	815,280	3.9%	164,787	233,859
2023	Average	11,608	401,054	412,663		451,036	348,079	799,115		158,570	226,377
2024	JAN	12,147	413,384	425,531	6.5%	462,636	348,128	810,764	4.7%	164,794	231,669
	FEB	11,859	416,486	428,345	7.3%	465,489	348,007	813,496	5.0%	165,676	231,340
	MAR	12,058	426,988	439,046	4.5%	476,761	357,715	834,476	0.1%	167,855	233,743
	APR	11,717	426,510	438,227	4.2%	474,957	354,424	829,381	-0.2%	168,166	233,544
	MAY	11,715	431,264	442,979	8.5%	479,707	356,729	836,436	6.1%	169,629	234,656
	JUN	11,848	435,764	447,612	8.9%	484,805	359,806	844,611	6.6%	171,199	235,765
	JUL	11,626	432,725	444,351	5.8%	481,340	354,315	835,655	1.6%	171,322	234,963
	AUG	12,047	438,849	450,896	9.9%	488,286	358,835	847,121	7.4%	172,882	236,688
	SEP	11,733	432,439	444,172	8.5%	480,588	350,383	830,971	5.9%	172,370	235,245
	OCT	11,714	435,963	447,677	8.8%	484,036	353,435	837,471	6.4%	173,563	236,826
	NOV	11,621	435,899	447,520	7.4%	483,897	354,051	837,948	5.2%	174,605	237,983
	DEC	11,102	432,098	443,200	4.0%	479,225	350,243	829,468	1.7%	174,494	242,096
2024	Average	11,766	429,864	441,630		478,477	353,839	832,317		170,546	235,377
2025	JAN	10,684	427,742	438,426	3.0%	473,595	345,621	819,216	1.0%	174,024	239,748
	FEB	10,596	426,559	437,155	2.1%	472,395	344,628	817,023	0.4%	174,677	239,661
	MAR	10,261	427,102	437,363	-0.4%	472,834	344,206	817,040	-2.1%	175,544	239,977
	APR	9,895	423,209	433,104	-1.2%	467,962	338,278	806,240	-2.8%	176,498	241,244
	MAY	10,288	430,911	441,199	-0.4%	476,932	347,088	824,020	-1.5%	177,110	241,530
	JUN	9,869	425,482	435,351	-2.7%	470,908	340,031	810,939	-4.0%	176,636	240,279
	JUL	9,667	416,494	426,161	-4.1%	461,161	331,955	793,116	-5.1%	173,635	235,831
	AUG	10,124	426,328	436,452	-3.2%	472,541	340,425	812,966	-4.0%	176,706	240,378
	SEP	9,884	422,373	432,257	-2.7%	467,857	334,844	802,701	-3.4%	177,916	240,765
	OCT	9,884	424,227	434,111	-3.0%	469,797	336,005	805,802	-3.8%	179,250	243,077
	NOV	9,759	421,103	430,862	-3.7%	466,284	333,068	799,352	-4.6%	178,676	241,919
	DEC	9,531	420,568	430,099	-3.0%	467,842	329,621	797,463	-3.9%	179,230	247,182
2025	Average	10,037	424,342	434,378		470,009	338,814	808,823		178,768	241,920

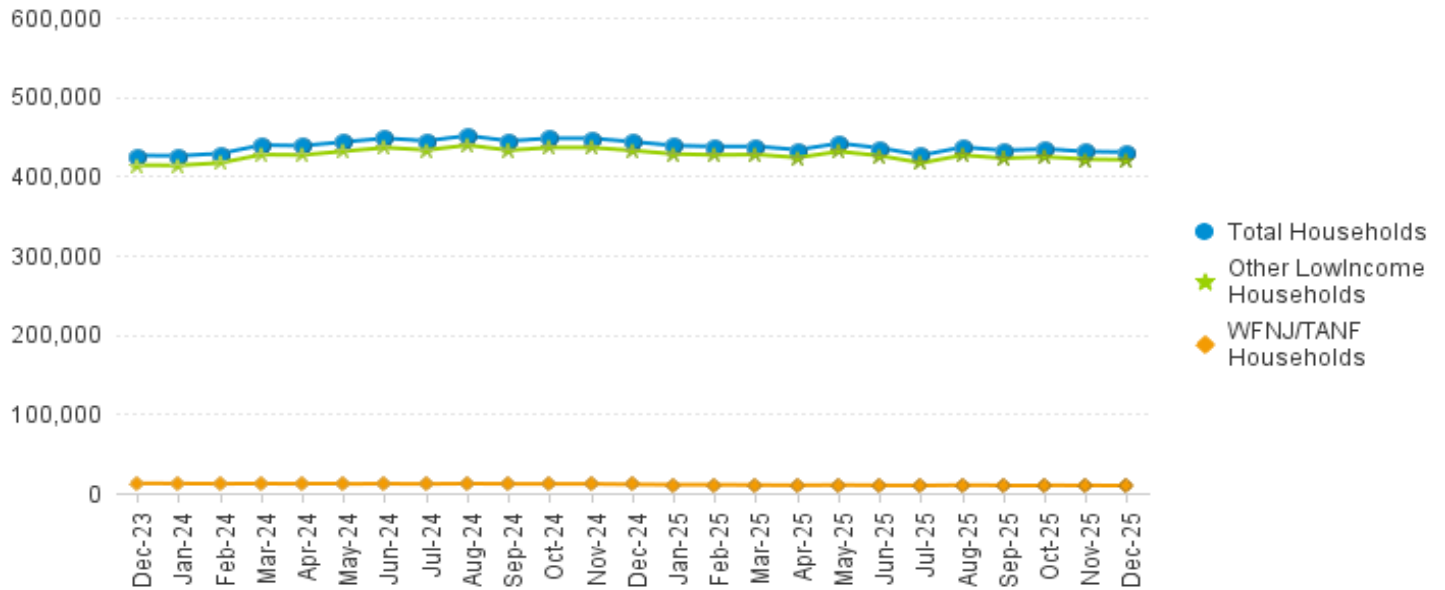
This Table is based on those Households & Persons that received SNAP issuances (benefits) during the month

Data is derived from NJ MMIS Shared Data Warehouse.
 Effective July 2013 this data query source was converted to the SDW.

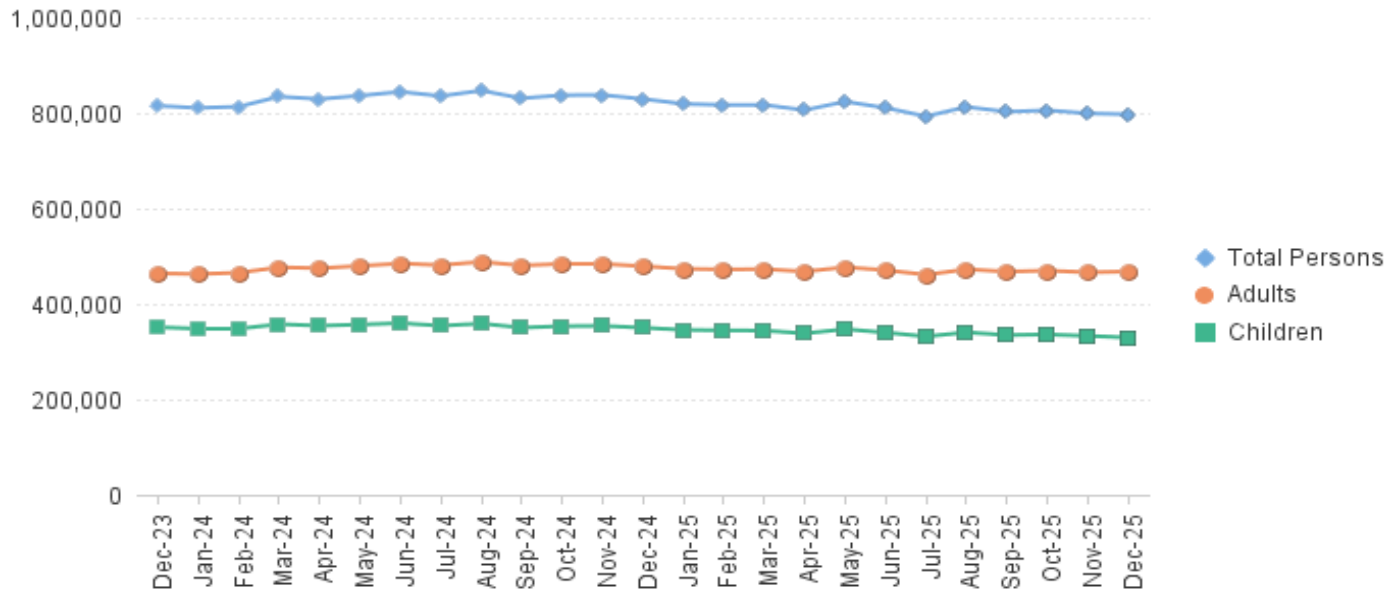
* Age 60+ and People with a disability columns are independent subsets of total persons. An individual might appear in both columns

**TABLE 6: NJ SNAP (FOOD STAMPS)
TRENDS FOR PARTICIPATING HOUSEHOLDS & PERSONS
DECEMBER 2023 THROUGH DECEMBER 2025 (STATEWIDE)**

Statewide NJ SNAP Households: DECEMBER 2023 Through DECEMBER 2025



Statewide NJ SNAP Persons: DECEMBER 2023 Through DECEMBER 2025



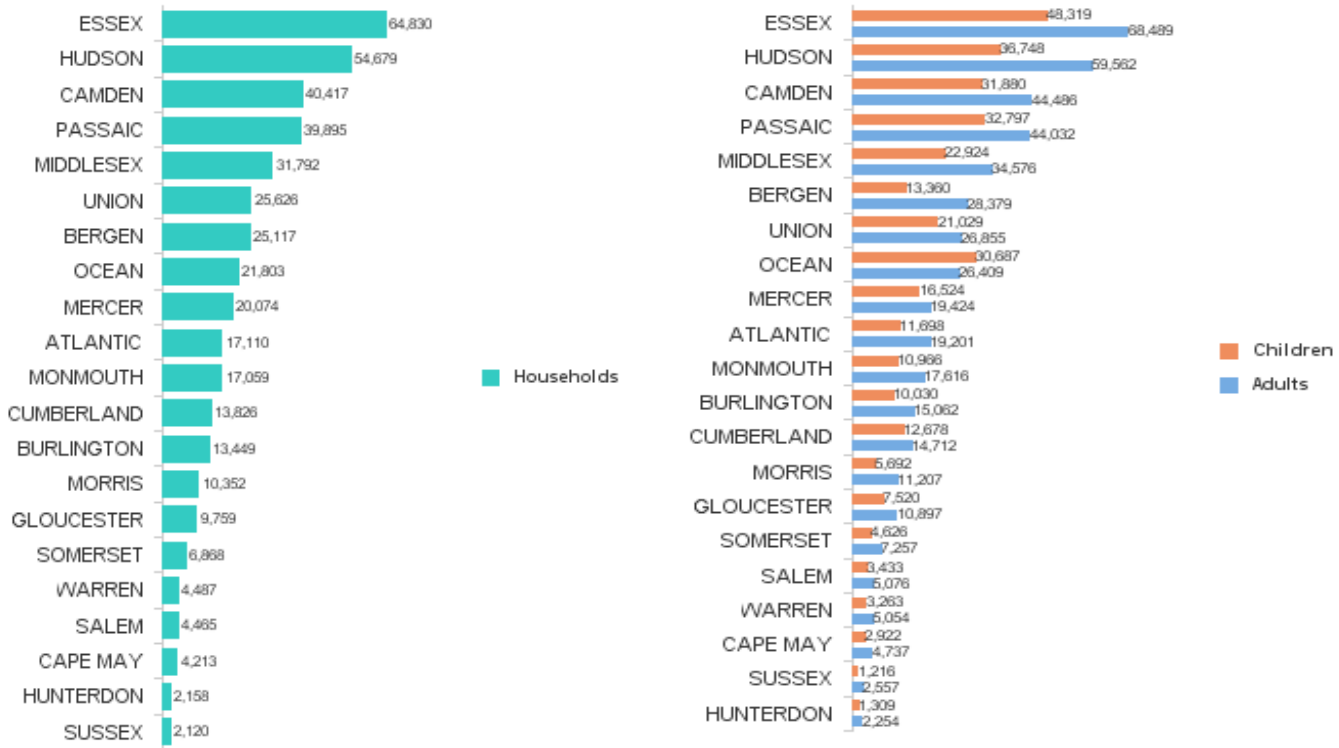
Data is derived from NJ MMIS Shared Data Warehouse Issuance files.
Effective July 2013 this data query source was converted to the SDW

TABLE 7 : NJ SNAP NUMBER OF PARTICIPATING HOUSEHOLDS, PERSONS, ADULTS AND CHILDREN BY COUNTY FOR DECEMBER 2025

County	HOUSEHOLDS				PERSONS				Age 60+	People with a disability
	WFNJ/TANF	Other low income	TOTAL	% Chng (1 Yr)	Adults	Children	TOTAL	% Chng (1 Yr)		
ATLANTIC	572	16,538	17,110	-5.6% *	19,201	11,698	30,899	-6.9%	7,034	10,230
BERGEN	261	24,856	25,117	-0.8%	28,379	13,360	41,739	-1.8%	15,960	18,160
BURLINGTON	432	13,017	13,449	9.8% Δ	15,062	10,030	25,092	9.8% Δ	4,694	7,975
CAMDEN	1,170	39,247	40,417	-2.1%	44,486	31,880	76,366	-2.9%	13,078	21,413
CAPE MAY	76	4,137	4,213	-3.2%	4,737	2,922	7,659	-5.8%	1,558	2,432
CUMBERLAND	310	13,516	13,826	-2.1%	14,712	12,678	27,390	-3.5%	4,229	7,813
ESSEX	1,384	63,446	64,830	-10.0% *	68,489	48,319	116,808	-10.1% *	22,794	32,906
GLOUCESTER	242	9,517	9,759	1.9% Δ	10,897	7,520	18,417	0.2%	3,538	6,668
HUDSON	1,577	53,102	54,679	-2.7%	59,562	36,748	96,310	-4.1%	25,105	30,595
HUNTERDON	25	2,133	2,158	1.0%	2,254	1,309	3,563	-1.0%	925	1,302
MERCER	671	19,403	20,074	-6.4% *	19,424	16,524	35,948	-7.1%	6,451	11,257
MIDDLESEX	580	31,212	31,792	0.8%	34,576	22,924	57,500	-1.0%	16,208	20,627
MONMOUTH	216	16,843	17,059	-5.2%	17,616	10,966	28,582	-7.4% *	7,844	10,552
MORRIS	87	10,265	10,352	-2.6%	11,207	5,692	16,899	-3.6%	5,870	6,558
OCEAN	316	21,487	21,803	0.1%	26,409	30,687	57,096	-1.6%	8,473	12,338
PASSAIC	792	39,103	39,895	-1.2%	44,032	32,797	76,829	-3.4%	17,721	21,445
SALEM	144	4,321	4,465	-1.8%	5,076	3,433	8,509	-4.2%	1,400	2,547
SOMERSET	195	6,673	6,868	3.1% Δ	7,257	4,626	11,883	1.4% Δ	3,240	4,438
SUSSEX	12	2,108	2,120	-3.9%	2,557	1,216	3,773	-8.4% *	1,077	1,655
UNION	366	25,260	25,626	-2.0%	26,855	21,029	47,884	0.4% Δ	10,328	13,457
WARREN	103	4,384	4,487	0.4%	5,054	3,263	8,317	-0.1%	1,703	2,814
NJ TOTAL	9,531	420,568	430,099	-3.0%	467,842	329,621	797,463	-3.9%	179,230	247,182

Δ=higher caseload % change * =lower caseload % change

Total NJ SNAP Recipients DECEMBER 2025 by County



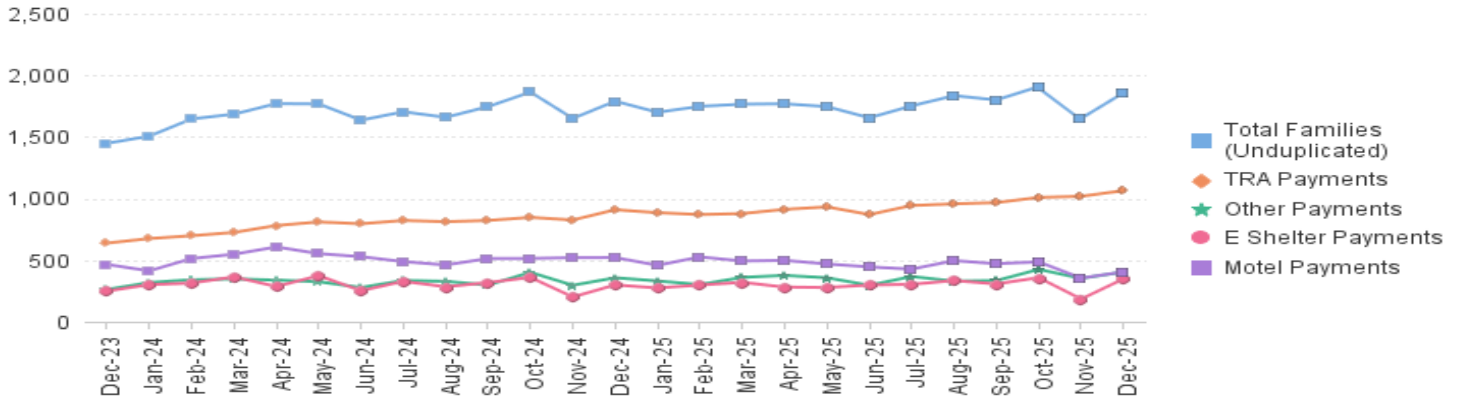
Data is derived from NJ MMIS Shared Data Warehouse. Effective July 2013 this data query source was converted to the SDW.

* Age 60+ and People with a disability columns are independent subsets of total persons. An individual might appear in both columns

TABLE 8 :
EMERGENCY ASSISTANCE (STATEWIDE) **TOTAL NUMBER OF ELIGIBLE FAMILIES RECEIVING EMERGENCY ASSISTANCE PAYMENTS**
DECEMBER 2023 THROUGH DECEMBER 2025 - STATEWIDE

		Total WFNJ/EA Families (Undupl)	% CHNG (1 YR)	Temp Rent Asst. Payments (Undupl)	% CHNG (1 YR)	Motel Housing Payments (Undupl)	% CHNG (1 YR)	Shelter/Transitional Housing Payments (Undupl)	% CHNG (1 YR)	Other WFNJ/EA Payments (Undupl)	% CHNG (1 YR)
2023	DEC	1,448	21.0%	638	16.8%	465	66.1%	249	-9.8%	262	8.7%
2023	Average	1,398		608		385		325		258	
2024	JAN	1,506	20.5%	675	19.7%	413	33.2%	301	0.7%	318	42.0%
	FEB	1,646	27.5%	698	27.1%	513	59.3%	314	-11.5%	341	54.3%
	MAR	1,685	15.3%	725	23.9%	548	30.2%	364	-7.6%	348	24.7%
	APR	1,770	46.8%	781	37.5%	607	110.0%	286	4.4%	338	69.8%
	MAY	1,768	27.2%	810	33.7%	553	44.8%	374	11.0%	325	32.7%
	JUN	1,636	10.9%	795	26.8%	528	20.8%	252	-31.1%	278	14.4%
	JUL	1,704	17.6%	822	34.3%	488	14.0%	328	-2.4%	335	26.9%
	AUG	1,659	20.7%	812	29.3%	461	21.0%	284	7.2%	328	13.1%
	SEP	1,746	18.2%	822	31.7%	513	32.9%	318	-13.6%	298	1.4%
	OCT	1,864	24.7%	847	30.5%	514	24.2%	360	5.9%	401	43.7%
	NOV	1,650	12.7%	826	29.1%	520	36.8%	201	-35.8%	296	-1.7%
	DEC	1,790	23.6%	909	42.5%	521	12.0%	299	20.1%	357	36.3%
2024	Average	1,702		794		515		307		330	
2025	JAN	1,700	12.9%	885	31.1%	458	10.9%	274	-9.0%	331	4.1%
	FEB	1,748	6.2%	870	24.6%	526	2.5%	298	-5.1%	302	-11.4%
	MAR	1,766	4.8%	878	21.1%	493	-10.0%	320	-12.1%	360	3.4%
	APR	1,769	-0.1%	912	16.8%	498	-18.0%	281	-1.7%	376	11.2%
	MAY	1,746	-1.2%	932	15.1%	469	-15.2%	278	-25.7%	357	9.8%
	JUN	1,655	1.2%	870	9.4%	445	-15.7%	298	18.3%	296	6.5%
	JUL	1,752	2.8%	943	14.7%	427	-12.5%	304	-7.3%	367	9.6%
	AUG	1,835	10.6%	957	17.9%	496	7.6%	334	17.6%	330	0.6%
	SEP	1,800	3.1%	967	17.6%	471	-8.2%	307	-3.5%	334	12.1%
	OCT	1,908	2.4%	1,009	19.1%	486	-5.4%	358	-0.6%	425	6.0%
	NOV	1,650	0.0%	1,018	23.2%	354	-31.9%	184	-8.5%	352	18.9%
	DEC	1,858	3.8%	1,064	17.1%	405	-22.3%	348	16.4%	404	13.2%
2025	Average	1,766		942		461		299		353	

NJ STATEWIDE
Families Receiving Emergency Assistance
DECEMBER 2023 THROUGH DECEMBER 2025



WFNJ/EA data is derived from NJ MMIS Shared Data Warehouse.
 Effective July 2013 this data query source was converted to the SDW.

* Effective Feb '11 Transitional Housing Payments were removed from 'Other EA Payments' and added to 'Shelter Payments'.

TABLE 9 :
EMERGENCY ASSISTANCE (BY COUNTY) **TOTAL NUMBER OF ELIGIBLE FAMILIES RECEIVING EMERGENCY ASSISTANCE PAYMENTS BY COUNTY (UNDUPLICATED CASES) FOR DECEMBER 2025**

County	TOTAL WFNJ/EA Families (Undupl)	% CHNG From DEC 24	Temp Rent Asst. Payments (Undupl)	Motel Housing Payments (Undupl)	Shelter/Transitional Housing Payments (Undupl)	Other WFNJ/EA Payments (Undupl)	SSI Receipts Receiving EA **
ATLANTIC	94	100.0% Δ	70	19	0	26	73
BERGEN	48	17.1%	30	2	11	10	8
BURLINGTON	182	28.2%	21	106	67	13	9
CAMDEN	64	-24.7% *	19	25	19	15	7
CAPE MAY	19	-24.0% *	3	16	0	4	2
CUMBERLAND	10	11.1%	1	1	8	1	1
ESSEX	126	1.6%	55	0	60	20	26
GLOUCESTER	28	16.7%	0	10	14	12	10
HUDSON	461	2.4%	384	40	40	98	97
HUNTERDON	4	300.0% Δ	2	2	0	0	1
MERCER	192	-5.4%	128	50	7	39	92
MIDDLESEX	110	22.2%	75	25	2	44	66
MONMOUTH	55	-5.2%	1	28	29	2	23
MORRIS	26	-7.1%	15	11	2	4	39
OCEAN	52	-13.3% *	32	16	0	13	7
PASSAIC	188	-12.6%	153	7	30	41	43
SALEM	11	120.0% Δ	3	1	2	5	6
SOMERSET	84	2.4%	37	27	17	24	63
SUSSEX	0	0%	0	0	0	0	2
UNION	90	4.7%	25	16	40	29	23
WARREN	14	7.7%	10	3	0	4	5
NJ Total	1,858	3.8%	1,064	405	348	404	603

Δ=higher caseload % change

*=lower caseload % change

** SSI-EA includes pay codes 22 and 24, data is derived from NJ Division of Family Development FAMIS Report #FM430-03A

WFNJ/EA data is derived from NJ MMIS Shared Data Warehouse.

Effective July 2013 this data query source was converted to the SDW.

Number WFNJ Families Receiving EA by County DECEMBER 2025

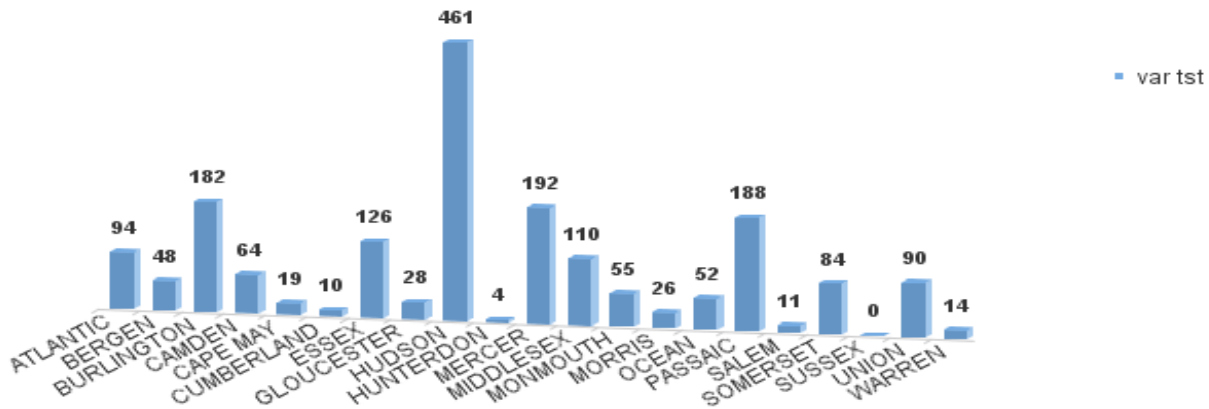
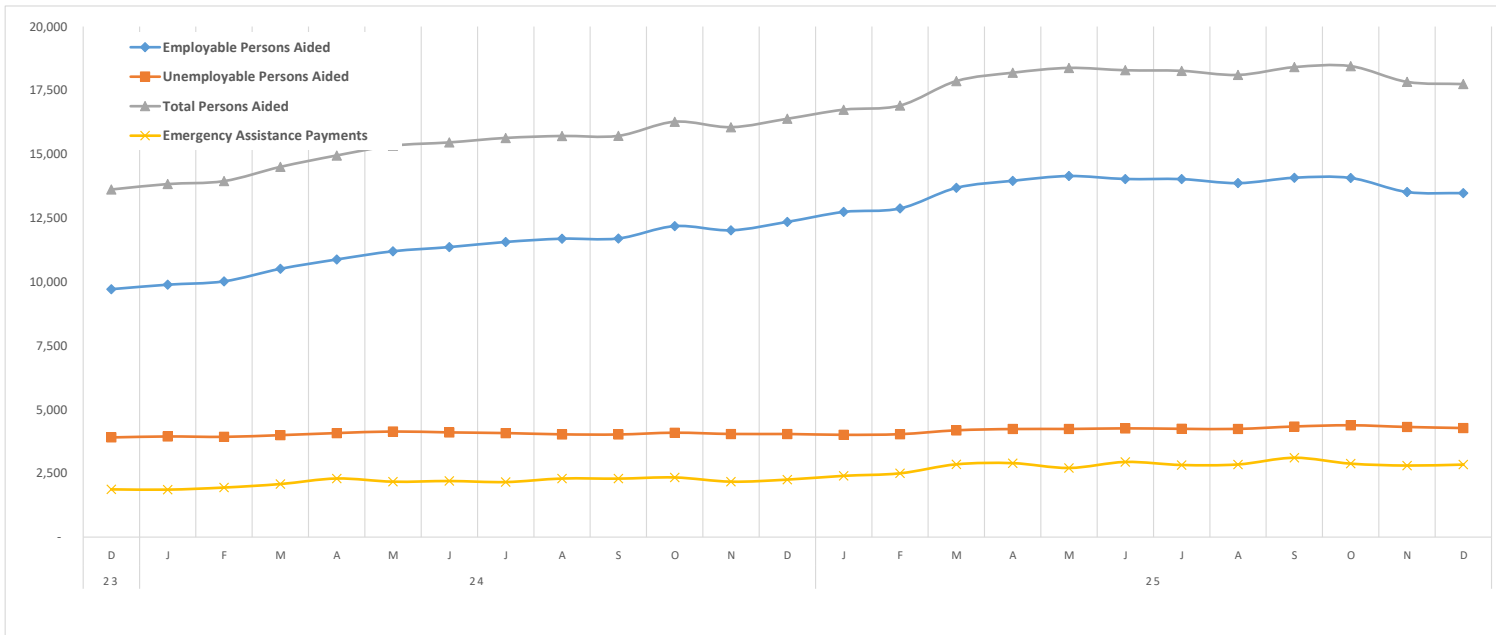


TABLE 10: GENERAL ASSISTANCE PROGRAM
NUMBER OF EMPLOYABLE AND UNEMPLOYABLE RECIPIENTS AND EMERGENCY ASSISTANCE PAYMENTS - STATEWIDE
DECEMBER 2023 THROUGH DECEMBER 2025

	Total Cases						Emergency Assistance Cases			
	Employable	% Chng (1 Yr)	Unemployable	% Chng (1 Yr)	Total	% Chng (1 Yr)	Temporary Rental Assistance	Other GA-EA	Total	% Chng (1 Yr)
2023 DEC	9,712	39.7%	3,905	14.4%	13,617	31.4%	598	1,272	1,870	6.5%
2023 AVERAGE	7,575		3,694		11,269		603	1,173	1,776	
2024 JAN	9,888	46.3%	3,942	14.4%	13,830	35.5%	612	1,247	1,859	9.2%
FEB	10,019	52.7%	3,927	15.2%	13,946	39.9%	513	1,428	1,941	11.6%
MAR	10,510	59.1%	3,993	12.3%	14,503	42.7%	629	1,449	2,078	10.0%
APR	10,875	65.6%	4,075	14.0%	14,950	47.4%	659	1,636	2,295	28.9%
MAY	11,197	70.5%	4,136	12.2%	15,333	49.5%	680	1,490	2,170	14.2%
JUN	11,360	71.4%	4,101	8.4%	15,461	48.5%	696	1,501	2,197	22.9%
JUL	11,562	65.9%	4,075	8.6%	15,637	45.8%	662	1,494	2,156	26.7%
AUG	11,689	49.1%	4,025	5.4%	15,714	34.8%	749	1,545	2,294	22.7%
SEP	11,699	41.3%	4,019	7.0%	15,718	30.6%	761	1,529	2,290	41.8%
OCT	12,182	35.4%	4,090	6.8%	16,272	26.8%	766	1,571	2,337	30.4%
NOV	12,019	27.8%	4,039	5.8%	16,058	21.4%	784	1,387	2,171	26.7%
DEC	12,349	27.2%	4,039	3.4%	16,388	20.3%	766	1,486	2,252	20.4%
2024 AVERAGE	11,279		4,038		15,318		690	1,480	2,170	
2025 JAN	12,738	28.8%	4,006	1.6%	16,744	21.1%	814	1,586	2,400	29.1%
FEB	12,874	28.5%	4,032	2.7%	16,906	21.2%	861	1,637	2,498	28.7%
MAR	13,681	30.2%	4,183	4.8%	17,864	23.2%	883	1,968	2,851	37.2%
APR	13,957	28.3%	4,234	3.9%	18,191	21.7%	931	1,965	2,896	26.2%
MAY	14,144	26.3%	4,236	2.4%	18,380	19.9%	949	1,759	2,708	24.8%
JUN	14,028	23.5%	4,260	3.9%	18,288	18.3%	1,007	1,936	2,943	34.0%
JUL	14,023	21.3%	4,242	4.1%	18,265	16.8%	944	1,880	2,824	31.0%
AUG	13,866	18.6%	4,238	5.3%	18,104	15.2%	1,002	1,844	2,846	24.1%
SEP	14,077	20.3%	4,333	7.8%	18,410	17.1%	1,031	2,076	3,107	35.7%
OCT	14,068	15.5%	4,381	7.1%	18,449	13.4%	1,062	1,815	2,877	23.1%
NOV	13,519	12.5%	4,314	6.8%	17,833	11.1%	1,024	1,779	2,803	29.1%
DEC	13,474	9.1%	4,272	5.8%	17,746	8.3%	1,134	1,706	2,840	26.1%
2025 AVERAGE	13,704		4,228		17,932		970	1,829	2,799	

NEW JERSEY STATEWIDE GENERAL ASSISTANCE CASES
DECEMBER 2023 THROUGH DECEMBER 2025



Source: NJ Division of Family Development, GA Fiscal Unit

TABLE 11: EMPLOYABLE AND UNEMPLOYABLE CASES AND EMERGENCY ASSISTANCE CASES RECEIVING PAYMENTS BY COUNTY DECEMBER 2025

PROGRAM	Total Cases						Emergency Assistance Cases			
	Employable	% Chng (1 Yr)	Unemployable	% Chng (1 Yr)	Total	% Chng (1 Yr)	Temporary Rental Assistance	Other GA-EA	Total	% Chng (1 Yr)
ATLANTIC	1,081	2.0%	141	-13.0%	1,222	0.0%	155	89	244	171.1% Δ
BERGEN	296	-16.4%	216	-4.0%	512	-11.6% *	82	32	114	28.1%
BURLINGTON	679	42.6%	294	58.9%	973	47.2% Δ	12	259	271	68.3%
CAMDEN	1,948	11.1%	460	-12.7%	2,408	5.6%	36	80	116	-17.1%
CAPE MAY	196	-14.4%	67	34.0%	263	-5.7%	21	53	74	-31.5% *
CUMBERLAND	537	24.0%	199	0.5%	736	16.6%	3	23	26	18.2%
ESSEX	1,695	23.2%	328	20.6%	2,023	22.8% Δ	87	172	259	34.9%
GLOUCESTER	331	17.4%	134	7.2%	465	14.3%	1	35	36	-2.7%
HUDSON	2,138	21.7%	292	0.0%	2,430	18.6%	306	176	482	119.1% Δ
HUNTERDON	64	68.4%	34	-34.6%	98	8.9%	5	10	15	25.0%
MERCER	706	2.3%	315	12.1%	1,021	5.1%	59	73	132	7.3%
MIDDLESEX	507	1.8%	325	-3.0%	832	-0.1%	64	102	166	22.1%
MONMOUTH	401	0.0%	263	5.6%	664	2.2%	0	86	86	50.9%
MORRIS	227	-13.4%	158	-6.5%	385	-10.7% *	31	48	79	0.0%
OCEAN	333	-13.1%	226	6.1%	559	-6.2%	27	78	105	-12.5%
PASSAIC	846	-0.9%	240	21.8%	1,086	3.3%	96	62	158	-1.9%
SALEM	217	12.4%	75	21.0%	292	14.5%	8	10	18	157.1% Δ
SOMERSET	325	-13.3%	131	42.4%	456	-2.4%	55	106	161	-30.6% *
SUSSEX	25	-10.7%	17	-34.6%	42	-22.2% *	0	8	8	-27.3% *
UNION	804	-1.1%	261	0.0%	1,065	-0.8%	67	166	233	3.6%
WARREN	118	26.9%	96	45.5%	214	34.6% Δ	19	38	57	90.0%
NJ TOTAL	13,474	9.1%	4,272	5.8%	17,746	8.3%	1,134	1,706	2,840	26.1%

Δ = ↑ Caseload %

* = ↓ Caseload %

**TABLE 12:
OFFICE OF
CHILD SUPPORT
SERVICES**

**OFFICE OF CHILD SUPPORT SERVICES
QUARTERLY PERFORMANCE REPORT
STATE SUMMARY
TITLE IV-D SOURCE COLLECTION REPORT**

Comparison of Quarter-1 (FFY 2025 vs. FFY 2026)

COLLECTION SOURCE	TOTAL 10/1/2024 - 12/31/2024 -	% OF TOTAL COLLECTIONS	TOTAL 10/1/2025 - 12/31/2025 -	% OF TOTAL COLLECTIONS	DOLLAR CHANGE	% CHANGE
FEDERAL TAX	\$1,464,325	0.57%	\$849,811	0.34%	\$ (614,514)	-41.97%
STATE TAX	\$690,300	0.27%	\$633,301	0.25%	\$ (56,999)	-8.26%
UIB	\$6,152,302	2.39%	\$5,972,174	2.37%	\$ (180,128)	-2.93%
INC WITHHOLD	\$181,797,360	70.50%	\$179,612,406	71.42%	\$ (2,184,954)	-1.20%
FROM OTHER STATES	\$9,749,754	3.78%	\$9,728,077	3.87%	\$ (21,677)	-0.22%
ADMIN ENFORCEMENT	\$4,942,459	1.92%	\$4,569,998	0.02%	\$ (372,461)	-7.54%
OTHER	\$53,082,608	20.58%	\$50,111,446	19.93%	\$ (2,971,162)	-5.60%
TOTAL COLLECTIONS*	\$257,879,108	100%	\$251,477,213	100%	\$ (6,401,895)	-2.48%
DISBURSED COLLECTIONS**	\$220,486,546		\$216,115,109		\$ (4,371,437)	-1.98%

* Includes collections on both current support and arrears.

** Includes collections on both current support and arrears; also includes money sent to other states.

SOURCE: NJKiDS (Based on Federal Quarterly Report of Collections - OCSE-34A except Disbursed Collections)

Disbursed Collections obtained from Federal Data Report - OCSE-157, which is reported annually to Congress and used in the calculation of incentive dollars earned by each state.

**TABLE 13:
OFFICE OF
CHILD SUPPORT
SERVICES**

**OFFICE OF CHILD SUPPORT SERVICES
STATE SUMMARY
TITLE IV-D PATERNITY ESTABLISHMENT REPORT**

Comparison of December (FFY 2025 vs. FFY 2026)

County	DECEMBER 2024			DECEMBER 2025			Increase or Decrease (-) from FFY 2025 to FFY 2026
	Total Children Born Out of Wedlock*	Number of Paternities Established	Percent of Paternities Established	Total Children Born Out of Wedlock*	Number of Paternities Established	Percent of Paternities Established	
Atlantic	4,151	4,153	100.0%	3,739	3,738	100.0%	-0.1%
Bergen	2,151	2,107	98.0%	1,942	1,901	97.9%	-0.1%
Burlington	3,164	3,091	97.7%	2,865	2,810	98.1%	0.4%
Camden	10,790	10,546	97.7%	9,866	9,641	97.7%	0.0%
Cape May	735	737	100.3%	668	679	101.6%	1.4%
Cumberland	4,684	4,656	99.4%	4,197	4,184	99.7%	0.3%
Essex	16,172	15,483	95.7%	15,039	14,388	95.7%	-0.1%
Gloucester	2,829	2,799	98.9%	2,474	2,455	99.2%	0.3%
Hudson	6,548	6,398	97.7%	5,987	5,872	98.1%	0.4%
Hunterdon	120	120	100.0%	98	101	103.1%	3.1%
Mercer	4,327	4,204	97.2%	3,880	3,797	97.9%	0.7%
Middlesex	4,167	4,059	97.4%	3,731	3,670	98.4%	1.0%
Monmouth	2,919	2,855	97.8%	2,567	2,526	98.4%	0.6%
Morris	714	706	98.9%	613	606	98.9%	0.0%
Ocean	3,188	3,139	98.5%	2,747	2,701	98.3%	-0.1%
Passaic	6,236	6,115	98.1%	5,680	5,569	98.0%	0.0%
Salem	2,187	2,096	95.8%	2,014	1,957	97.2%	1.3%
Somerset	768	757	98.6%	680	658	96.8%	-1.8%
Sussex	349	353	101.1%	305	307	100.7%	-0.5%
Union	7,778	7,470	96.0%	7,245	6,989	96.5%	0.4%
Warren	426	425	99.8%	350	349	99.7%	-0.1%
NJ TOTALS	84,403	82,269	97.5%	76,687	74,898	97.7%	0.2%

SOURCE: NJKiDS (Based on Federal Performance Measures - OCSE-157)

* Information on Out of Wedlock Births obtained from NJ Bureau of Vital Statistics

**TABLE 14:
OFFICE OF
CHILD SUPPORT
SERVICES**

**OFFICE OF CHILD SUPPORT SERVICES
STATE SUMMARY
TITLE IV-D REPORT OF CASES WITH ORDERS
Comparison of December (FFY 2025 vs. FFY 2026)**

County	DECEMBER 2024			DECEMBER 2025			Increase or Decrease (-) from FFY 2025 to FFY 2026
	Total Cases	Cases with Orders	% of Cases with Orders	Total Cases	Cases with Orders	% of Cases with Orders	
Atlantic	8,819	8,096	91.8%	8,448	7,704	91.2%	-0.6%
Bergen	9,305	9,050	97.3%	9,011	8,750	97.1%	-0.2%
Burlington	10,442	9,356	89.6%	10,180	8,969	88.1%	-1.5%
Camden	22,436	20,859	93.0%	21,169	19,517	92.2%	-0.8%
Cape May	2,222	2,107	94.8%	2,126	2,005	94.3%	-0.5%
Cumberland	9,374	8,876	94.7%	8,561	8,155	95.3%	0.6%
Essex	31,980	27,061	84.6%	30,939	26,432	85.4%	0.8%
Gloucester	7,874	7,432	94.4%	7,452	6,987	93.8%	-0.6%
Hudson	15,906	14,116	88.7%	15,363	13,516	88.0%	-0.8%
Hunterdon	991	947	95.6%	931	893	95.9%	0.4%
Mercer	10,331	9,139	88.5%	9,827	8,733	88.9%	0.4%
Middlesex	13,771	12,568	91.3%	13,336	12,022	90.1%	-1.1%
Monmouth	9,392	8,760	93.3%	8,813	8,108	92.0%	-1.3%
Morris	4,424	4,279	96.7%	4,286	4,146	96.7%	0.0%
Ocean	10,972	10,496	95.7%	10,025	9,582	95.6%	-0.1%
Passaic	14,432	13,014	90.2%	14,101	12,576	89.2%	-1.0%
Salem	3,348	3,129	93.5%	3,142	2,935	93.4%	0.0%
Somerset	3,399	3,094	91.0%	3,242	2,977	91.8%	0.8%
Sussex	2,113	2,061	97.5%	2,050	1,986	96.9%	-0.7%
Union	14,428	13,664	94.7%	13,749	13,102	95.3%	0.6%
Warren	1,909	1,830	95.9%	1,819	1,714	94.2%	-1.6%
NJ TOTALS	207,868	189,934	91.4%	198,570	180,809	91.1%	-0.3%

SOURCE: NJKiDS (Based on Federal Performance Measures - OCSE-157)

**TABLE 15:
OFFICE OF
CHILD SUPPORT
SERVICES**

**OFFICE OF CHILD SUPPORT SERVICES
STATE SUMMARY
TITLE IV-D COLLECTIONS ON CURRENT SUPPORT**

Comparison of December (FFY 2025 vs. FFY 2026)

County	DECEMBER 2024			DECEMBER 2025			Increase or Decrease (-) from FFY 2025 to FFY 2026
	Total Current Support Due	Total Current Support Distributed	Total Collection Rate	Total Current Support Due	Total Current Support Distributed	Total Collection Rate	
Atlantic	\$3,293,886	\$2,082,788	63.2%	\$3,393,929	\$2,144,522	63.2%	0.0%
Bergen	\$6,960,063	\$5,126,039	73.6%	\$7,053,245	\$5,182,205	73.5%	-0.2%
Burlington	\$4,787,233	\$3,270,541	68.3%	\$4,847,349	\$3,289,041	67.9%	-0.5%
Camden	\$6,879,631	\$3,989,451	58.0%	\$7,067,336	\$4,079,119	57.7%	-0.3%
Cape May	\$883,030	\$601,060	68.1%	\$911,456	\$629,412	69.1%	1.0%
Cumberland	\$2,664,100	\$1,536,142	57.7%	\$2,724,821	\$1,587,469	58.3%	0.6%
Essex	\$9,364,635	\$5,481,875	58.5%	\$9,925,931	\$5,709,016	57.5%	-1.0%
Gloucester	\$3,380,508	\$2,241,465	66.3%	\$3,426,199	\$2,281,174	66.6%	0.3%
Hudson	\$6,550,718	\$4,131,858	63.1%	\$6,763,401	\$4,316,262	63.8%	0.7%
Hunterdon	\$875,727	\$712,031	81.3%	\$862,790	\$699,842	81.1%	-0.2%
Mercer	\$3,677,501	\$2,256,786	61.4%	\$3,887,246	\$2,431,637	62.6%	1.2%
Middlesex	\$6,625,819	\$4,466,305	67.4%	\$6,839,907	\$4,705,462	68.8%	1.4%
Monmouth	\$5,327,756	\$3,783,690	71.0%	\$5,085,444	\$3,624,104	71.3%	0.2%
Morris	\$3,547,733	\$2,491,176	70.2%	\$3,583,179	\$2,562,761	71.5%	1.3%
Ocean	\$5,486,278	\$3,773,702	68.8%	\$5,466,215	\$3,758,867	68.8%	0.0%
Passaic	\$5,700,319	\$3,524,605	61.8%	\$5,974,578	\$3,648,265	61.1%	-0.8%
Salem	\$965,275	\$558,945	57.9%	\$985,995	\$587,230	59.6%	1.7%
Somerset	\$2,289,120	\$1,842,919	80.5%	\$2,293,221	\$1,846,338	80.5%	0.0%
Sussex	\$1,405,758	\$1,060,135	75.4%	\$1,419,834	\$1,048,440	73.8%	-1.6%
Union	\$6,319,528	\$4,107,705	65.0%	\$6,511,262	\$4,277,982	65.7%	0.7%
Warren	\$1,037,478	\$806,287	77.7%	\$1,045,697	\$802,061	76.7%	-1.0%
NJ TOTALS	\$88,022,095	\$57,845,505	65.7%	\$90,069,034	\$59,211,209	65.7%	0.0%

SOURCE: NJKiDS (Based on Federal Performance Measures - OCSE-157)

**TABLE 16:
OFFICE OF
CHILD SUPPORT
SERVICES**

**OFFICE OF CHILD SUPPORT SERVICES
STATE SUMMARY
TITLE IV-D CASES ARREARS COLLECTION REPORT**

Comparison of December (FFY 2025 vs. FFY 2026)

County	DECEMBER 2024			DECEMBER 2025			Increase or Decrease (-) from FFY 2025 to FFY 2026
	Total Cases with Arrears	Total Amount Collected	Average Arrears Collection per Case	Total Cases with Arrears	Total Amount Collected	Average Arrears Collection per Case	
Atlantic	5,552	\$609,144	\$109.72	5,327	\$596,894	\$112.05	\$2.33
Bergen	6,107	\$1,210,757	\$198.26	6,003	\$1,079,727	\$179.86	-\$18.39
Burlington	6,334	\$838,928	\$132.45	6,072	\$885,291	\$145.80	\$13.35
Camden	12,809	\$1,247,843	\$97.42	12,182	\$1,232,476	\$101.17	\$3.75
Cape May	1,471	\$147,047	\$99.96	1,418	\$164,511	\$116.02	\$16.05
Cumberland	5,648	\$452,296	\$80.08	5,206	\$496,835	\$95.44	\$15.35
Essex	16,485	\$1,985,439	\$120.44	15,934	\$1,937,712	\$121.61	\$1.17
Gloucester	4,935	\$669,303	\$135.62	4,697	\$624,078	\$132.87	-\$2.76
Hudson	9,696	\$1,104,265	\$113.89	9,323	\$1,146,491	\$122.97	\$9.09
Hunterdon	593	\$121,261	\$204.49	579	\$81,347	\$140.50	-\$63.99
Mercer	6,296	\$693,823	\$110.20	6,092	\$839,242	\$137.76	\$27.56
Middlesex	8,523	\$1,169,786	\$137.25	8,342	\$1,286,136	\$154.18	\$16.93
Monmouth	5,832	\$876,427	\$150.28	5,457	\$926,624	\$169.80	\$19.53
Morris	2,917	\$474,211	\$162.57	2,886	\$473,713	\$164.14	\$1.57
Ocean	6,803	\$870,573	\$127.97	6,397	\$961,761	\$150.35	\$22.38
Passaic	8,838	\$1,132,073	\$128.09	8,687	\$1,139,961	\$131.23	\$3.13
Salem	1,868	\$153,592	\$82.22	1,836	\$159,145	\$86.68	\$4.46
Somerset	2,078	\$380,266	\$183.00	2,060	\$499,335	\$242.40	\$59.40
Sussex	1,321	\$169,820	\$128.55	1,307	\$214,806	\$164.35	\$35.80
Union	8,968	\$1,134,061	\$126.46	8,743	\$1,275,287	\$145.86	\$19.41
Warren	1,233	\$164,127	\$133.11	1,178	\$179,968	\$152.77	\$19.66
NJ TOTALS	124,307	\$15,605,042	\$125.54	119,726	\$16,201,340	\$135.32	\$9.78

SOURCE: OCSE-157 Child Support Enforcement Annual Data Report

Table 17**WORK FIRST NEW JERSEY STATISTICAL SUMMARY****WFNJ****DECEMBER 2025**

COUNTY	EMPLOYMENT DIRECTED ACTIVITIES			EMPLOYED OPEN (WFNJ RECIPIENT)	SUPPORT SERVICES ON ACTIVE CASE		CLOSED FOR EMPLOYMENT THIS MONTH	POST ASSISTANCE CHILD CARE
	CWEP	ALL OTHER TRAINING	JOB SEARCH		CHILD CARE	TRAINING REL. EXPENSES		
ATLANTIC	0	50	1	33	47	64	3	11
BERGEN	6	10	59	8	45	12	3	18
BURLINGTON	138	8	76	15	53	25	8	8
CAMDEN	56	149	15	64	154	0	19	17
CAPE MAY	9	6	0	2	5	3	1	1
CUMBERLAND	1	36	46	14	31	60	6	7
ESSEX	1	150	7	72	193	166	12	31
GLOUCESTER	8	9	6	19	28	18	9	9
HUDSON	11	187	31	106	200	31	21	32
HUNTERDON	2	0	0	0	0	0	0	1
MERCER	68	201	11	38	159	69	20	29
MIDDLESEX	0	48	99	31	97	2	9	8
MONMOUTH	1	10	6	13	45	10	3	13
MORRIS	3	8	0	7	5	2	1	1
OCEAN	0	160	0	6	32	12	2	10
PASSAIC	120	117	0	25	118	73	5	2
SALEM	0	9	0	8	10	10	2	1
SOMERSET	2	27	0	7	46	2	6	2
SUSSEX	0	0	1	1	4	0	0	0
UNION	55	37	0	14	70	16	7	1
WARREN	1	9	7	1	7	0	1	1
STATE TOTAL	482	1231	365	484	1349	575	138	203

Data is derived from NJ Division of Family Development's FAMIS Reports RM064-01 & RM703-51, AdHoc Reports 5549 & 5598 and SDW Report WR00022WZ_CC

**DIVISION OF FAMILY DEVELOPMENT CURRENT PROGRAM STATISTICS
DECEMBER 2025**

ACRONYMS

EMERGENCY ASSISTANCE (EA) - Payments to those eligible for WFNJ/TANF or WFNJ/GA, authorized during the 30 consecutive days immediately following the emergency (defined as a substantial loss of shelter, food, clothing, or household furnishings by fire, flood or other similar disaster) or if eligible individual or family is in an imminent or actual state of homelessness.

NJ SNAP - Formerly the Food Stamp Program, now known as NJ SNAP (NJ Supplemental Nutrition Assistance Program) authorized by Congress as a nutritional supplement program to provide low income households with more food of greater variety and better nutrition. Program eligibility is based on household income, resources, and expenses for medical, shelter, and dependent care. CWA staff refers certain recipients to the New Jersey Department of Labor for participation in the Food Stamp Employment and Training Program.

FAMIS: Family Assistance Management Information System

GAAS: General Assistance Automated System

NJKiDS: New Jersey Kids Deserve Support (Child Support Information Management System)

NJ MMIS SHARED DATA WAREHOUSE: The Shared Data Warehouse (SDW) is the repository for New Jersey's DFD and Medicaid data. Since 2003, OptumInsight has administered the SDW and provided access to the data through a reporting tool known as Business Objects.

OMEGA: Online Management of Economic Goal Achievement

SSI-EA: Supplemental Security Income-Emergency Assistance

WFNJ: Work First New Jersey - Fully implemented July 1, 1997, this is New Jersey's welfare reform program which responds to the requirements of the Federal Personal Responsibility and Work Opportunity Reconciliation Act (**PRWORA**) of 1996. PRWORA established Temporary Assistance for Needy Families (**TANF**) as the replacement for AFDC cash assistance. WFNJ includes two segments, **WFNJ/TANF** for families with children, and **WFNJ/GA** (General Assistance) for single adults and couples without dependent children. WFNJ emphasizes achieving self-sufficiency and limits lifetime receipt of financial assistance to a total of five years.

**DIVISION OF FAMILY DEVELOPMENT CURRENT PROGRAM STATISTICS
DECEMBER 2025**

EXPLANATORY NOTES

The Department of Human Services Division of Family Development provides basic income and an opportunity to achieve self-sufficiency for individuals and families served by the Division's programs. The Division provides leadership, direction and supervision to those public agencies responsible for administering those programs and plans for and develops policies to promote self-sufficiency.

WFNJ STATISTICAL SUMMARY (TABLE 17)

Employment Directed Activities (EDA) - From Activities Summary Report (OMEGA report # RM064). Unduplicated count of persons participating in Community Work Experience Program (CWEP), All Other Training, or Job Search.

Number of Persons Employed This Month, Still Receiving TANF - Individuals with open "empl" activity on OMEGA. Ad hoc report.

Participants Receiving Child Care Services - From Issuance Disbursement Summary (OMEGA report # RM703). Total number of active participants who show receipt of Child Care.

Number of Persons Closed on FAMIS Due to Employment - From FAMIS report #5549-RM-2

Post TANF and Receiving Child Care - Persons no longer in receipt of TANF but still receiving child care. From Share Data Warehouse Child Care case count based on Child Care payments (SDW report WR00022WZ_CC).