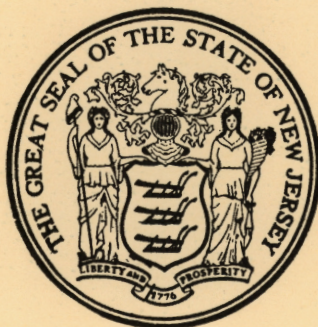


FIFTY-EIGHTH ANNUAL REPORT

1967



Board of Public Utility Commissioners State of New Jersey

WILLIAM F. HYLAND, President

WILLIAM E. OZZARD, Commissioner

ANTHONY J. GROSSI, Commissioner

EDWARD F. HAMILL, Secretary

ROBERT E. FRANK, Assistant Secretary

JOSEPH P. MASTROENI, Assistant Secretary

FIFTY-EIGHTH ANNUAL REPORT

1967



Board of Public Utility Commissioners State of New Jersey

WILLIAM F. HYLAND, President

WILLIAM E. OZZARD, Commissioner

ANTHONY J. GROSSI, Commissioner

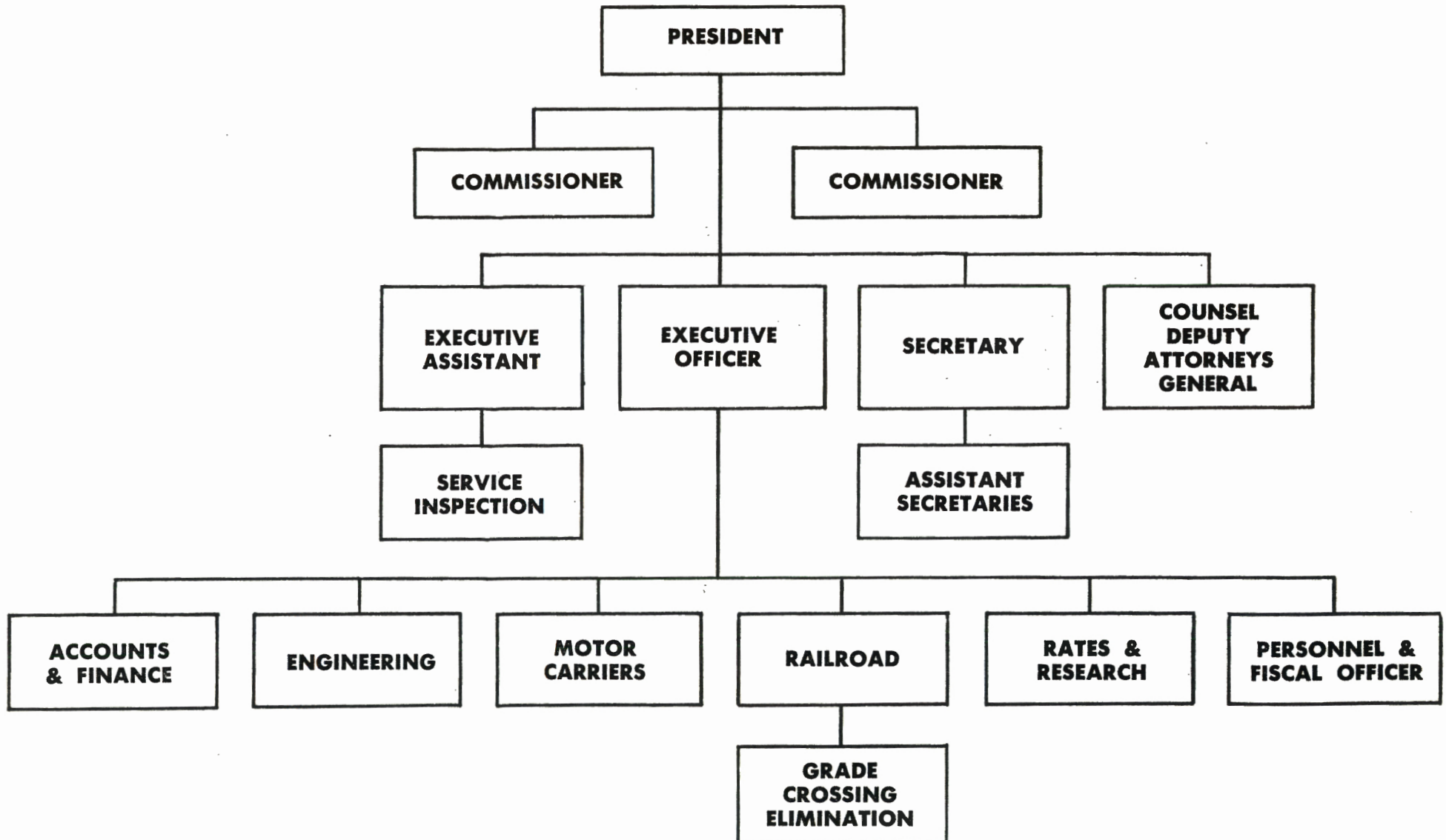
EDWARD F. HAMILL, Secretary

ROBERT E. FRANK, Assistant Secretary

JOSEPH P. MASTROENI, Assistant Secretary

**DEPARTMENT OF PUBLIC UTILITIES
BOARD OF PUBLIC UTILITY COMMISSIONERS**

ORGANIZATION



STATE OF NEW JERSEY
DEPARTMENT OF PUBLIC UTILITIES
BOARD OF PUBLIC UTILITY COMMISSIONERS
State House Annex, Trenton 25, N. J.

HONORABLE RICHARD J. HUGHES, *Governor*

State of New Jersey

Trenton, New Jersey

Dear Governor Hughes:

The Board of Public Utility Commissioners herewith respectfully submits to you the Fifty-eighth Annual Report, in accord with N.J.S.A. 48:2-11, respecting the activities of the Board and its staff during the calendar year 1967.

As the report can only be a summary of the numerous statutory activities of the Board, a complete record of specific matters is available in the case files at the Board's office.

Respectfully submitted,

DAVID A. WATERS, *Secretary*

TABLE OF CONTENTS

| | <i>Page</i> |
|---|-------------|
| The Board, Its Staff and Work | 1 |
| The Office of the Secretary | 3 |
| Table of Detailed Activities of The Division of Engineering ... | 4 |
| Table of Detailed Activities of The Division of Motor Carriers | 5 |
| Table of Detailed Activities of The Division of Railroads | 6 |
| Table of Detailed Activities of The Division of Rates and Research | 7 |
| Service Inspection Station | 8 |
| Legal | 8 |
| Highlights of 1967 Activities | 9 |
| Promotional Activities | 10 |
| Fee Interests | 10 |
| Keystone Project | 10 |
| Oyster Creek | 11 |
| Natural Gas Pipeline Safety | 12 |
| Power Outage and Electric Reliability | 12 |
| Utilities Under the Board's Jurisdiction During 1967 | 13 |

DEPARTMENT OF PUBLIC UTILITIES

President WILLIAM F. HYLAND
Commissioner ANTHONY J. GROSSI
Commissioner WILLIAM E. OZZARD
Secretary EDWARD F. HAMILL
Executive Officer SIDNEY H. KIKEN
Executive Assistant to the Board JOHN A. BYRON
Assistant Secretary ROBERT E. FRANK
Assistant Secretary JOSEPH P. MASTROENI
Chief Counsel FELIX G. FORLENZA
Counsel WILLIAM GURAL
Assistant Counsel VINCENT J. DOTOLI
Deputy Attorney General MICHAEL J. MEHR
Deputy Attorney General LEON S. WOLK

Division of Accounts and Finance

Director LEIGH P. HARTSHORN
Assistant Director LOUIS P. GAETA

Division of Engineering

Director ROBERT G. PESCHEL
Assistant Director JOSEPH W. FERRARO

Division of Motor Carriers

Director EDWARD D. McCUE
Assistant Director WILLIAM L. HUMPHREYS

Division of Railroads

Director CHARLES N. GERARD
Assistant Director HENRY B. FREEFIELD

Division of Rates and Research

Director ANDREW V. FARLEY
Assistant Director VAUGHN M. DONOVAN

Personnel

Personnel and Fiscal Officer JOHN J. COLL
Assistant Personnel and Fiscal Officer RICHARD B. MOUNT

Service Inspection

Supervisor THOMAS H. HARTIGAN

THE BOARD, ITS STAFF AND WORK

The activities of the Board of Public Utility Commissioners are necessarily wide in scope in order to deal effectively with the large number of problems involved in the regulation of public utility enterprises, in accordance with the Statutes of New Jersey.

Such matters generally relate to rates charged for service, the quality and adequacy of service, adequacy of facilities, or to issuance of securities. In the discharge of its duties in the regulation of these matters in the public interest, it is necessary for the Board to maintain an adequate staff of skilled technicians, who are qualified to apply engineering and accounting techniques to the various problems coming to the Board.

In order to assure uniformity of performance and to provide instrumentalities for the exercise of its powers, the Board has issued rules and regulations relating to standards of utility service, has adopted systems of accounts for the various types of utilities, and requires each utility company under its jurisdiction to submit an annual financial accounting and statistical report covering its operations. In addition to annual reports, the larger utilities are required to submit quarterly or monthly operating reports. Special reports of specific matters are required of particular utilities, as circumstances may warrant. Periodic field inspections are made by members of the Board's staff to determine whether there is compliance with the Board's regulations, and whether the facilities of common carriers, such as railroads and autobus companies, properly serve the public convenience and necessity, and conform to the safety standards set by the Board.

Each utility company must file a tariff with the Board showing the schedules of rates or fares and the terms and conditions under which it undertakes to furnish service to customers. Any charges, other than those provided in the tariffs accepted by the Board for filing, are not lawful. Special accounting, engineering or sta-

tistical studies, as may be necessary in particular situations are also made by the Board's staff.

During the year 1967, there were two new appointments to the Board. Commissioner Anthony J. Grossi was appointed a commissioner on July 6, 1967. Commissioner William E. Ozzard was appointed as a commissioner on July 10, 1967.

Commissioner Grossi replaced Commissioner Raymond J. Otis, who passed away on December 11, 1966. Commissioner Ozzard replaced Commissioner D. Lane Powers, who resigned on July 10, 1967.

Due to his elevation to Judge of the Juvenile and Domestic Relations Court of Hudson County, the Secretary to the Board, Edward F. Hamill was succeeded by a new Secretary, David A. Waters, who was appointed to that position on December 27, 1967.

Public utilities regulated by the Board in 1967 include:

- 5 ELECTRIC
- 5 GAS
- 1 PIPELINE
- 1 COMBINATION ELECTRIC & GAS
- 8 TELEPHONE
- 1 TELEGRAPH
- 144 WATER
- 38 SEWERAGE
- 36 RAILROAD
- 1 RAILWAY EXPRESS
- 347 AUTOBUS

Subway companies are subject to the jurisdiction of the Board. However, only one such company, Public Service Coordinated Transport, operates an underground electric trolley line in Newark, in addition to its extensive bus system. During 1967 approximately 365,000,000 passengers rode buses in New Jersey.

Keeping pace with the State's general growth during 1967 services supplied by most utilities increased over 1966. Water usage on an aver-

age decreased. This can be attributed to the relatively heavy rainfall of this year.

In order to meet the increased demands for service, the various investor-owned utilities constructed plant additions, purchased new equipment, or replaced some of their older equipment.

The following dollar amounts of plant additions for 1967 are approximate, since the final results have not yet been tabulated:

| | |
|-----------|--------------|
| Autobus | \$ 2,200,000 |
| Electric | 214,500,000 |
| Gas | 38,800,000 |
| Telephone | 121,000,000 |
| Water | 12,800,000 |

This growth is further borne out by the amount of financing approved by the Board during 1967. The various classes of securities authorized were as follows:

| <i>Class of Security</i> | <i>Amount Authorized</i> |
|--------------------------|--------------------------|
| Capital Stock | \$137,757,479 |
| Bonds | 122,812,000 |
| Notes | 50,849,840 |
| Security Agreements | 604,571 |
| TOTAL | \$312,023,890 |

Autobus utilities sold 122 buses with a total sales price of some \$371,368 during 1967. The

proceeds were used to finance the acquisition of new equipment or for working capital purposes. The disposition of the equipment did not impair the service being rendered.

In addition, funds were available from internal generation, such as depreciation accruals and retained earnings, and from capital contributions.

It is indicated that during 1967 there was an increase in revenues from utility services rendered, in operating expenses, including depreciation accruals, and in taxes. The following tabulation illustrates this condition:

| <i>Type of Utility</i> | <i>% Increase over 1966</i> | |
|------------------------|-----------------------------|---------------------------|
| | <i>Revenues</i> | <i>Operating Expenses</i> |
| Autobus | 5.0 | 4.1 |
| Electric | 6.1 | 7.2 |
| Gas | 8.4 | 7.5 |
| Telephone | 7.0 | 7.5 |
| Water | 6.6 | 5.2 |

As previously stated, the total dollar value of authorized financing was \$312,023,890. The following is a list of utilities having authority to issue securities in the principal amount of \$1,000,000 or more:

| <i>Name of Utility</i> | <i>Principal or Face Amount</i> |
|---|---------------------------------|
| Public Service Electric and Gas Company | \$100,000,000 |
| New Jersey Bell Telephone Company | 95,000,000 |
| Jersey Central Power & Light Company | 30,000,000 |
| Monmouth Consolidated Water Company | 11,939,000 |
| New Jersey Power & Light Company | 10,000,000 |
| New Jersey Water Company | 9,960,000 |
| Hackensack Water Company | 9,324,240 |
| Delaware Valley Water Company | 5,596,500 |
| New Jersey Natural Gas Company | 4,600,000 |
| Elizabethtown Water Company | 4,500,000 |
| United Telephone Company of New Jersey | 4,500,000 |
| Commonwealth Water Company, The | 3,897,000 |
| Elizabethtown Gas Company | 3,352,258 |
| Forsgate Sanitation, Inc. | 3,300,000 |
| Atlantic County Water Company of New Jersey | 2,651,000 |
| South Jersey Gas Company | 2,033,561 |
| Bernards Water Company, The | 1,690,000 |
| Ocean City Water Service Company | 1,180,000 |
| Lakewood Water Company | 1,042,000 |
| Princeton Water Company, The | 1,000,000 |

THE OFFICE OF THE SECRETARY

It is the duty of the Secretary and Assistant Secretaries to keep a true and complete record of all Commission proceedings and to issue all notifications, motions, reports, and orders of the Board. It is through this office that all communications to and from the Board are channeled.

All petitions are received by and filed with the Secretary along with the annual and quarterly reports required of companies under the

Board's jurisdiction. Final decisions and orders and various other official documents of the Board are given attestation by the Secretary. It is the responsibility of the Office of the Secretary to forward these official Board communications to all parties of interest.

The office of the Secretary retains the Board's permanent records and all original case files, and has facilities to print and publish all docket schedules, notices, reports and other documents.

DIVISIONS OF THE BOARD

THE DIVISION OF ACCOUNTS AND FINANCE

The principal responsibilities of the Division of Accounts and Finance are the examination of financial and operating reports of utilities, and the investigation of petitions for approval of security issues, mergers, and sales of property. The Board has always required that the utilities make annual and other periodic reports in order that the State and the public may have available properly classified, meaningful and

intelligible accounting data for the proper regulation of the industries under the Board's jurisdiction. In addition, these reports make possible valuable research by this and other divisions of the Board, and form the background against which the division investigates applications for approval of specific financial transactions.

Table of Detailed Activities of the DIVISION OF ACCOUNTS AND FINANCE

The staff of the Division of Accounts and Finance examines annual, quarterly and monthly reports which are required to be filed to insure that utilities operations are on a sound financial basis. These reports are submitted on forms which are supplied by the Board and which range from a one page simplified form for utilities having operating revenues less than \$7,500 per annum, to a 110 page report required of utilities having annual revenues in excess of \$1,000,000.

Every gas and electric utility is also required to file a copy of its monthly report to the Board. Autobus and water utilities having annual revenues in excess of \$200,000 and \$1,000,000 respectively, are also required to file quarterly reports.

These reports make possible valuable research and form the background against which the Board may judge rate matters and petitions for approval of specific financial transactions. In addition, the reports are open for

inspection by the public. During 1967, 131 requests were made by persons visiting the Board's offices, to examine specific reports or to make general studies.

Numerous field investigations were conducted with respect to the adequacy of the books and records. The examinations not only included seeing that the books and records were in agreement with the filed annual re-

ports, but that the information recorded therein was in accordance with the requirements of the Board's applicable uniform system of accounts. Members of this division were also assigned to assist the Federal Power Commission field auditors conducting an examination of the books and records of Jersey Central Power & Light Company and New Jersey Power & Light Company.

THE DIVISION OF ENGINEERING

The Division of Engineering is charged with all technical matters pertaining to all utilities except railroads and autobuses. This includes valuation studies, investigations, determinations and recommendations pertaining to adequacy and safety of utility plant and service,

accuracy of meters, depreciation rates, rate base, sale or lease of property, and petitions seeking the right to exercise the power of eminent domain as well as the investigation of both formal and informal complaints concerning utility service.

**Table of Detailed Activities of the
DIVISION OF ENGINEERING**

| <i>Description of Items</i> | <i>Cleared During Calendar Year 1967</i> | <i>Description of Items</i> | <i>Cleared During Calendar Year 1967</i> |
|---|--|---------------------------------------|--|
| <i>Engineering Matters</i> | | <i>Other Than Engineering Matters</i> | |
| Municipal Consents | 50 | Security Issues | 34 |
| Eminent Domains | 66 | Miscellaneous | 9 |
| Certificates of Convenience & Necessity | 8 | Total Others | 43 |
| Property Sales | 22 | <i>Informal Matters</i> | |
| Notices of Sale | 127 | Engineering | 221 |
| State Highway Department Relocation Orders | 35 | Governor's Referrals | 35 |
| Miscellaneous | 43 | Total Informal Matters | 256 |
| Total Engineering Matters | 351 | TOTAL | 650 |

Additional matters, relatively new to the Board and which are summarized below, have been charged to the Division of Engineering for investigation and recommendation.

Members of this division attended many involved meetings concerning negotiations and the signing of a contract with the Commonwealth Associate Consultants who have been

jointly retained by the States of New Jersey, Pennsylvania, Maryland, Delaware and the District of Columbia to investigate the reliability of the Pennsylvania, New Jersey, and Maryland System. The division attended various committee meetings of the Federal Power Commission concerning power failure problems and meetings with the National Association of Railroad and Regulatory Utility Commissioners concerning power failure problems and related matters.

This division participated actively in the hearings before this Board concerning the so-

called Keystone Project, in which the Board gave approval to Public Service Electric and Gas Company for the construction of a 90 mile overhead electric power transmission line. This case involved 37 days of public hearings and resulted in a 78 page Board Decision.

The division participated in a determination involving proposed construction by Jersey Central Power and Light Company of a nuclear fueled electric generating plant at Oyster Creek in Lacey Township, Ocean County.

THE DIVISION OF MOTOR CARRIERS

The responsibility for the safety and adequacy of bus operations is the duty of the Division of Motor Carriers. New and re-built buses are inspected for maintenance semi-

annually. This division also conducts investigations of accidents and complaints, surveys bus routes, and conducts hearings upon requests for approval of local franchises.

**Table of Detailed Activities of the
DIVISION OF MOTOR CARRIERS**

| <i>Classification of Items</i> | <i>Year 1967</i> | <i>Classification of Items</i> | <i>Year 1967</i> |
|--------------------------------|------------------|--------------------------------|------------------|
| <i>Formal Proceeding</i> | | <i>Informal Proceedings</i> | |
| Municipal Consents | | Inspections: | |
| New Routes | 6 | New Buses | 215 |
| Change or Extend Routes | 18 | Rebuilt Buses | 182 |
| Additional Buses | 2 | Maintenance | 10,541 |
| Transfer of Consents | 7 | Traffic Investigations | 451 |
| Modification or Restrictions | 1 | Routes Surveyed | 173 |
| Discontinue Service or | | Accidents Investigated | 69 |
| Portion of Service | 4 | Accident Reports Examined | 5,868 |
| Formal Complaints | 3 | Insurance Matters | 2,951 |
| I.C.C. Applications | 21 | Complaints Investigated | 382 |
| Miscellaneous | 5 | Miscellaneous Matters | 238 |
| TOTAL | 67 | TOTAL | 21,070 |

A principal concern of the Board is the safe operation of utilities, and the Division of Motor Carriers is responsible for the safety inspec-

tion of autobuses in New Jersey. The above statistics will indicate the specific activity of the Motor Carriers Division in this regard.

This Division also has responsibility for the checking of service and investigation of complaints in bus matters. In determining whether or not bus service is adequate, staff members examine all schedules filed by the various carriers, check surveys and various routes, and make and analyze numerous traffic studies.

In some instances, applicants initiate petitions for certificates as passenger carriers, for extension of service routes, or for the establishment of new service routes. Changes and

extensions of bus services are designed to serve newly developed areas or to conform with municipal traffic patterns. In all instances, however, the petitioner must give evidence which substantiates the need for route changes, route extension or the establishment of new routes.

In addition to formal Board hearings, this Division also participates in joint matters before the Interstate Commerce Commission dealing with inter-state bus routes affecting the State of New Jersey.

THE DIVISION OF RAILROADS

The Division of Railroads investigates complaints and inquiries concerning safety in the operation of railroads and reviews the proposed

sales of railroad property. It also examines freight, passenger and express tariffs for approval and filing with the Board.

**Table of Detailed Activities of the
DIVISION OF RAILROADS**

| <i>Description of Items</i> | <i>Calendar Year 1967</i> | <i>Description of Items</i> | <i>Calendar Year 1967</i> |
|---|-------------------------------|---|-------------------------------|
| <i>Formal Proceedings</i> | | <i>Informal Proceedings</i> | |
| Grade Crossing Elimination Projects | 1 | Investigations of Accidents | 152 |
| Bridge Reconstruction Projects | 1 | Compl.-Serv. Stas. Tariffs | 31 |
| Grade Crossing Protection Projects | 5 | Compl.-Cond./Prot. Crossings | 45 |
| Grade Crossing Reconstruction Projects | 0 | Change in/additional protection | 1 |
| Disc./Curt. Psgr. Tr. Serv. | 0 | Change in Signal Equipment | 14 |
| Disc./Curt. Sta. Facilities | 5 | Miscellaneous | 107 |
| Establish New Grade Crossings | 5 | Passenger & Freight Tariffs Filed | 2,327 |
| Miscellaneous | 1 | Crossings Surveyed & Sketched | 204 |
| TOTAL | 18 | Traffic Checks | 44 |
| | | Inxp. Crossing Protection | 1,398 |
| | | Annual Railroad & Bridge Inspections | 145 |
| | | Land Sales | 68 |
| | | Railroad Shop Inspections | 223 |
| | | Railroad Station Inspections | 207 |
| | | Bridge Approaches | 5 |
| | | Pedestrian Subways | 45 |
| | | TOTAL | 5,016 |

The Division of Railroads carries on an extensive program designed to insure safety and convenience to the public. Included in this program are grade crossing elimination, grade crossing protection, bridge reconstruction, equipment and property inspection, the establishment of new grade crossings, and the changes in the classification of railroad stations and private grade crossings.

One of the major concerns of the Board is that of increasing protection against grade crossing accidents. Because of increasing population and vehicular traffic, an increase in grade crossing accidents would be expected. However, the Board's grade crossing programs, which involve replacing ground level grade crossings with bridges or underpasses, or

abandoning these crossings completely, indicates, statistically, a reduction in accidents at grade crossings. Orders for eliminating grade crossings are issued by the Board when evidence indicates public safety is endangered and public convenience is curtailed by ground level grade crossings.

Efforts are continuing by the Board to modernize and improve existing grade crossings. In certain instances, railroad companies are directed to install automatic gates, automatic flashing lights or other safety and warning devices at grade crossings.

During 1967, new legislation was passed permitting the Board to participate in the financing of the reconstruction of railroad highway grade crossings.

THE DIVISION OF RATES AND RESEARCH

This Division deals with all matters involved in proceedings before the Board in relation to rates and classifications for public utility services and classifications thereof. These include: rate of return studies; determination of rate base, fare schedules and other provisions; utility tariffs; studies of cost of

capital, capitalization ratios, and allocation of rate base and operating cost to classes of service; participation in negotiations under the Rate Negotiation Statute; participation in formal proceedings before the Board; and, the preparation of reports and drafts of documents as required by the Board.

**Table of Detailed Activities of the
DIVISION OF RATES AND RESEARCH**

| <i>Description of Items</i> | <i>Cleared During Calendar Year 1967</i> | <i>Description of Items</i> | <i>Cleared During Calendar Year 1967</i> |
|---------------------------------|--|---------------------------------|--|
| <i>Rate Petitions</i> | | <i>Miscellaneous Petitions</i> | |
| Electric Companies | 15 | Other than Rates | 7 |
| Gas Companies | 28 | | |
| Water Companies | 26 | TOTAL PETITIONS | 167 |
| Telephone and | | <i>Informal Matters</i> | |
| Telegraph Companies | 55 | Complaints and | |
| Bus Companies | 33 | Inquiries Re: Rates | 544 |
| Sewerage Companies | 3 | | |
| TOTAL RATE PETITIONS | 160 | TOTAL | 711 |

Members of this Division actively participated in negotiations with various utilities throughout the year 1967; these negotiations resulted in rate reductions that benefited large segments of New Jersey utility customers.

This Division also participated in a case concerning commercial practices engaged in by Atlantic City Electric Company, in which competing firms disputed the right of that utility company from engaging in activities which resulted in inducements to customers to choose the electric service rather than competing fuels. In its decision, the Board required all electric and gas utilities to file reports of their promotional activities.

After the Federal Communications Commission issued an interim order on July 5, 1967, in the matter of the Commission's investigation of American Telephone and Telegraph Company, the Board assigned members of this Division to actively participate in this case in conjunction with special counsel appointed by the Governor. The proceeding is complete in certain aspects, but will continue for at least another year. At least one member of this Division has attended all previous hearings, and will attend those to be held by the Federal Communications Commission in this matter until the case is completed.

SERVICE INSPECTION SECTION

A significant volume of customer complaints are received by the Board, involving disputes concerning allegedly high or inaccurate bills, inadequate gas or water pressure, low electric voltage conditions, security deposits for payment of bills, rusty or unpalatable water, unpaid bills and threatened disconnection of

service. All these complaints are thoroughly examined by this section and an equitable solution is sought which does justice to the customer and the utility involved.

During the year 1967, this section processed 1,551 complaints.

LEGAL

Legal services are handled by the Board's counsel and Deputy Attorneys General assigned to the Public Utility Commission.

Counsel and Deputy Attorneys General participated in meetings of the Board, were assigned to hearings, drafted legislative memoranda, examined decisions, and performed legal research.

Court Cases

During the year 1967 the Department's Legal Division was involved in approximately 25 court actions, of which 12 were on the Appellate level.

In a major railroad passenger curtailment case, *Twp. of Morris et als. v. Erie-Lackawanna Railroad and the Department of Public Utility Commissioners*, the New Jersey Supreme Court affirmed an order of the Board permitting selective curtailment of non-essential and lightly used passenger service by the railroad. Upon hearing it was found that the pruning of non-commuter mid-day passenger service would enable the railroad to better meet its major responsibility of providing transportation essential to the commuting workers in the mornings and late afternoon.

In another railroad case, the Supreme Court affirmed an order of the Board which required the Pennsylvania Railroad to amend its operating rules to require flagman on certain freight-trains. The Board had found that safety considerations outweighed the extra cost of additional employees.

During 1967 the Central Railroad of New Jersey entered into reorganization proceedings before the Federal Bankruptcy Court. The Board successfully filed petitions to intervene so that the public interest could be represented.

The Board was also involved in the numerous railroad merger cases before the I.C.C. and the Federal courts. It successfully supported Erie-Lackawanna's petition for inclusion in the Norfolk and Western Railroad System. Arguing for this inclusion before the United States Supreme Court, the Board felt that the exclusion of Erie-Lackawanna from a major railroad system would seriously inhibit its ability

to provide safe, adequate and proper service within New Jersey.

An order of the Board permitting rate increase while restricting the rate base of *Woodbury Terrace Sewerage Co.* was affirmed by the Appellate Division of the Superior Court. The objectors to the order sought to have the debt of the company used as the value for rate base. The Board refused to allow this and restricted the items allowed to the original cost of assets less depreciation and contributions to capital.

In *Twp. of Morris v. P.U.C.* the New Jersey Supreme Court gave the Board jurisdiction for water service rendered by a municipal water system when it acquires an investor owned company outside the town boundaries. The Board can now regulate the rates of water service of a municipal water company rendered outside the area of the town itself.

HIGHLIGHTS OF 1967 ACTIVITIES

New Jersey Bell Telephone Company— Rate Reductions Totaling \$10,700,000

As a result of negotiations with the Board, New Jersey Bell Telephone Company this year reduced intrastate telephone rates \$10.7 million annually.

In March, 1967, New Jersey Bell Telephone Company lowered the maximum rate from 35¢ to 25¢ for "After 8" and Sunday intrastate calls as well as long distance intrastate calls under 20 miles during these time periods. The initial time period for all intrastate station-to-station calls in the 21 through 25 miles range was expanded from 3 to 4 minutes and reductions will affect an estimated 500,000 calls yearly. Reduced rates for person-to-person intrastate calls and for volume control sets used by people with impaired hearing were also part of the reduction.

The foregoing reductions will save New Jersey Bell Telephone customers over \$4 million annually.

Another rate adjustment which will save the company's customers \$6.7 million annually was an outgrowth of the Federal Communication

proceeding involving the nation-wide Bell system and its rate structure, which approved a shift in revenue requirements from intrastate to interstate telephone service, thus allowing for a reduction in the cost for telephone service to the company's customers within the State of New Jersey.

This rate adjustment resulted in the extension of the periods in which lower rates apply for intrastate calls. The lower rates will apply for station-to-station calls from 7 o'clock in the evening to 7 o'clock the next morning, on week days rather than from 8:00 p.m. to 4:30 a.m. The lower rates will also apply on five certain holidays.

"Selective Calling" and "Econo-pak," two new offerings, are also included as part of this reduction and account for approximately \$3.3 million of the total reduction. Fifty-Seven Toll Rates involving 10¢ and 15¢ tolls and affecting 55 exchange areas were also included in these reductions.

PROMOTIONAL ACTIVITIES

On March 8, 1967, the Board concluded the formal proceeding against the promotional activities of Atlantic City Electric Company. The proceeding had been instituted by two complaints which were filed by customers, who are directly involved with competitive heating.

In its decision, the Board said that not all promotional allowances are prohibited by statutes. Promotional allowances are permitted when they are uniformly available to all customers in a reasonably defined class, and do not adversely affect customers who do not receive the promotional allowance.

That decision indicated that the Board would require all electric and gas utilities to file reports of their promotional activities. Accordingly, questionnaires were sent to each company, in order to determine the full scope of their activities. After review and evaluation of the replies, the Board, by letters dated October 26, 1967, directed each company to bring up to date the information previously supplied, to notify the Board of proposed changes in promotional practices and to submit annual statements of the amounts expended on promotional practices.

FEE INTERESTS

The Board in deciding several eminent domain proceedings has taken the position that the taking of an easement, in which all or substantially all of a parcel is to be affected, would be unduly injurious to the property owners.

Therefore, the Board has ordered that the utility condemn a fee interest. However, an easement may be condemned in any instance in which the property owner is located and requests that the taking be so limited.

KEYSTONE PROJECT

A massive system of 600 miles of long-distance 500,000-volt transmission lines to transmit power to eight eastern states and the District of Columbia is centered near Johnstown, Pennsylvania. This mine-mouth generating station will produce 1,800,000 kilowatts, and cost approximately \$350 million. The participation of New Jersey electric utilities in the project prompted the filing by Public Service Electric and Gas Company of a proceeding to secure from the Board authority to condemn a number of land parcels involved in the proposed right of way through New Jersey.

Opposing the Public Service petitions were the Townships of Readington and Tewksbury, three of the property owners affected, seven

other property owners from the area, Shelton College and, most extensively, two groups of Citizens Opposed to Power Towers (COPT)—one from Tewksbury and one from Readington.

The Board conducted public hearings for approximately two years to take testimony as to the need for the line, its economic and aesthetic impact on the area involved, and the reasonableness of the proposed method of transmission by overhead cable, supported by steel towers varying from 82 to 192 feet in height.

Public Service contended that the overhead power line is needed as part of the program to meet an expected doubling of demand for electricity in New Jersey within the next ten years.

Its opponents, principally the two COPT organizations, insisted that the lines be placed underground to avoid economic and aesthetic damage to the area through which it would run. COPT Tewksbury proposed an alternate to Public Service's proposal which contemplated the underground transmission of DC energy, which would ultimately be converted to AC. COPT Tewksbury submitted estimates of the costs of its DC underground system for the Board. The Board computed that the costs would be more than 14 times greater than that of Public Service's planned AC overhead installation. Public Service estimated that the DC proposal would cost 23 to 25 times more than its own system.

The Board, on May 31, 1967, issued its decision and order wherein it gave approval to Public Service for the construction of the 500,000 volt overhead transmission line. The Board found that the proposal of COPT Tewksbury would require cable and associated equipment which are presently unavailable and even if the equipment were made available, it would be insufficiently tested for reliability and efficiency. Recognizing that research in this field is in progress, the Board held that present development would not permit an underground

installation in time to meet the anticipated demand for electricity. The Board further concluded that the DC system proposed by COPT Tewksbury even at the lesser cost of 14 to 1 would be prohibitive.

Summarizing the Board's 78 page decision, the proposal of Public Service is the only practical and feasible method of transmission, the route proposed for the line is reasonable, and the owners of the property affected will not be unduly injured. The Board held that the rights of way over the parcels of land sought by Public Service in its petitions are necessary for the proposed transmission line, and granted authority to condemn them.

To minimize the effect of the line and towers on the surrounding area, the Board ordered Public Service to make use of available railroad or other existing rights of way wherever practicable, to locate the towers to avoid ridges and other high grounds, to landscape and periodically paint the towers, and to make available as much as possible of the right of way for farming, recreational and other uses.

This matter is presently pending before the Superior Court of New Jersey, Appellate Division.

OYSTER CREEK

On July 20, 1967, the Board issued its fourth interim order pertaining to the construction by Jersey Central Power & Light Company of a nuclear fueled electric generating plant at Oyster Creek, Lacey Township, Ocean County.

On July 12, 1967, a stipulation between the company and the Department of Conservation and Economic Development was filed with the Board. Attached thereto and made a part thereof was a copy of the plans and specifications relating to the observation wells and fresh water mound, and a Summary of Test Boring Data of an investigation made of geological conditions which might have a bearing on salt water intrusion. Upon completion of the fresh water mound and observation wells

in accordance with the stipulation, the cooling water canals may be connected to salt water on condition that the company continuously maintain the fresh water mound as so established. The parties also agreed that, until further ordered by the Board, the company shall make periodic test in each of the observation wells not less frequently than once each week and keep a record thereof available to representatives of this Board and the Department of Conservation and Economic Development at all times, and upon request furnish copies thereof.

The interim order stated that the Board found the filing reasonable and consistent with prior stipulations of the parties, and ordered

that, upon completion of the fresh water mound and observation wells, the cooling water canals be connected to salt water.

The authority granted in the Board's order was subject to the conditions that the company

continuously maintain the fresh water mound as established and that they make periodic tests as indicated above. The Board has been receiving and reviewing reports submitted by the company.

NATURAL GAS PIPELINE SAFETY

A bill placing the safety of gas pipelines under the jurisdiction of the Federal Department of Transportation has been passed by the U. S. Senate and is presently before the U. S. House of Representatives. Due to the excellent safety record of the gas industry and the efficient application of state codes that are in effect, the NARUC has been opposing Federal Government's taking jurisdiction over the safety transmission and distribution of gas in states which have adopted satisfactory safety codes. This State has been cooperating with the NARUC. The NARUC has been instrumental in having various states adopt gas safety codes and has sponsored the ASME (American Society of Mechanical Engineers) conduction of seminars relating to the application and use of the USA Standard Code for

Pressure Piping (USAS B31.8-1967). As of April, 1967, 44 states have adopted this Code (some instances with modifications making the code more stringent). The remaining states have the adoption of a safety code under consideration.

The Board has been reviewing the recently enacted gas safety codes adopted by various states and has been reviewing the Board's present Administrative Order pertaining to gas safety for the purpose of possible revision. Members of the staff have also been attending meetings conducted by the ASME and the NARUC. The Director of the Engineering Division is a member of the Sub-Committee of Staff Experts of the NARUC Committee on Gas.

POWER OUTAGE AND ELECTRIC RELIABILITY

On June 5, 1967, New Jersey suffered an electric power outage involving about 90% of the State. The only electric utilities that did not suffer any outages were Atlantic City Electric Company and Rockland Electric Company. The power outage also affected Pennsylvania, Delaware and Maryland. The companies affected are all members of the PJM (Pennsylvania-New Jersey-Maryland) power grid. The Board received detailed reports from the electric utilities concerning the power outage.

Members of the Board and staff have been attending meetings in Washington conducted by the Federal Power Commission, pertaining to the power outage and electric reliability.

The Board has met with the commissions and staffs of the states and the District of Columbia, which comprise the area served by the electric utilities belonging to the PJM System. The purpose of the meeting was to complete plans to retain a consultant to evaluate the reliability of the PJM System.

The following is a list of utilities under the Board's jurisdiction during 1967:

AUTO BUSES

A & A Bus Co., Inc.
 A. J. H. Bus Corp.
 A. M. Bus Co.
 Aben Bus Corp.
 Academy Bus Company, Inc.
 Ace Bus Transportation
 Acme Bus Company, Inc.
 Agresta Bus Co.
 American Buslines, Inc.
 Arc Bus Company, Inc.
 Associated Bus Company
 Associated Bus Company of Hawthorne
 Associated Bus Company of North Haledon
 Atlantic-Brigantine Coach Company
 Atlantic Bus Company, Inc.
 Atlantic City Transportation Company

B-6 Bus Company, Inc.
 B-7 Bus Corp.
 B-125 Bus Co., Inc.
 B. & M. Bus Company, Inc.
 B. & P. Bus Company, Inc.
 Babs Bus Company, Inc.
 Baker & Warren Bus Co., Inc.
 Balgen Bus Company, Inc.
 Bannon, Lester T., Bus Company, Inc.
 Baram Transportation Co.
 Bauer, Albert F. Inc.
 Baum Bus Company, Inc.
 Bauman Bus Corporation
 Bayonne Bus Company, Inc.
 Bays, W. J., Bus Company, Inc.
 Bayshore Bus Company, Inc.
 Bee Eight Bus Company
 Bee Five Bus Co.
 Bee Four Bus Corporation
 B-Eleven Bus Company, Inc.
 Bell, George d b/a Bell's Bus Service
 Bergen and Central Bus Company
 Beviano Chartered Service
 Binetti, Louis, Bus Service
 Bloom Bus Company, Inc.
 Blue Bus Lines
 Boro Busses Company
 Boro Busses-Rollo Transit
 Bowitz, Albert and Lillian
 Bridgeton Transit
 Broadway Transport Co. Inc.

AUTO BUSES

Browell Bus Co. Inc.
 Bryant and Shelton Company
 Budlick Bus Company, Inc.
 Bus Operating Co., Inc.

 Camptown Bus Lines, Inc.
 Cape Bus Co., Inc.
 Capital Transit
 Cappitelli, Anthony T.
 Carmella Bus Co., Inc.
 Casper Bus Company, Inc.
 Cassell Bus Co. Inc.
 Cavaliere Bus Co. Inc.
 Charner Bus Corporation
 Chok, Ida
 Cisko Bus Co.
 Claremont Transportation Company
 Clinton Avenue Bus Company
 Coast Cities Coaches, Inc.
 Colapinto Bus Co. Inc.
 Community Bus Lines, Inc.
 Conrad, G. T., Bus Service
 Consolidated Shore Lines, Inc.
 Costa Bus Co., Inc.
 Cottage Bus Co. Inc.
 Crane, J., Transportation Co. Inc.
 Crosby, Honora T., Estate of
 Joseph Moran, Administrator
 Culver Bus Company, Inc.
 Conn, Harry F. t/a Warwick Transportation

 D. I. R. Bus Corporation
 D'Arcangelo Bus Co.
 Daquila Bus Corporation
 DeCamp Bus Lines
 DeCorso, Michael
 Dee Bus Company, Inc.
 Delaware Bus Company
 Delaware River Coach Lines, Inc.
 Del Elizabeth Jitney Co.
 Dern, I., Inc.
 Di Croce & Head, Inc.
 Di Domenico Bus Company, Inc.
 Dikros Bus Co. Inc.
 Dilley, Fred J.
 Dormar Bus Company, Inc.
 Dover-Mt. Hope-Picatinny Bus Line
 Downtown Bus Co.
 Drogin Bus Company
 Duco Bus Co. Inc.

AUTO BUSES

E & A Bus Co.
E and M Bus Corp.
E.D.J. Bus Company Inc.
East Orange Transit Lines, Inc.
Effkay Bus Co. Inc.
Ekay Bus Co. Inc.
Elizabeth Bus Co.
Elizabeth Transit Corp.
Elizabeth-Union-Hillside-Irvington Line, Inc.
Ellis Bus Corporation
Ellmas Bus Co.
Elvio Bus Company, Inc.
Empire Bus Company Inc.
Engelhardt, Kenneth
Engelhardt, Ronald A.
Englewood Bus Transportation Co., Inc.
Errico, Michele
Es-Holt Bus Co.
Eureka Transportation Co. Inc.

F. D. & D. S. Bus Company, Inc.
Fairlawn Transportation, Inc.
Federal Bus Company, Inc.
Felz Bus Co.
Ferrell Bus Co. Inc.
Filida Bus Corporation
Fine Bus Transportation Co. Inc.
Five Mile Beach Electric Railway Company
Fleming Bus Company Inc.
Four Eight Four Corporation
Frankowski Bus Co. Inc.
Friedman Transportation Co.
Fulton Bus Company

G & F Bus Corp.
G. & W. Bus Company, Inc.
Garfield-Passaic Bus Company
Garfield & Passaic Transit Co.
Gearty, T. A. Bus Co., Inc.
Gendzvil Bus Co., Inc.
Gershkowitz, Eva, Inc.
Gertz Bus Company, Inc.
Gloria Bus Company, Inc.
Goldcor Transport Corp.
Goldsmith Bus Co., Inc.
Graope Transportation Co., Inc.
Grasso, Joseph, Bus Co.
Greenville Bus Company
Greyhound Lines, Inc.
Grodrud Bus Company, Inc.
Grossmann Bus Company, Inc.

AUTO BUSES

Grossman Transport Inc.
Gun-Tal Bus Co. Inc.

H & E Bus Company
H & R Bus Co., Inc.
Haberman, Anthony C. Bus Co., Inc.
Haflin Bus Co.
Hale Bus Corp.
Hanus, Wanda
Harrell Bus Co., Inc.
Harman Bus Company, Inc.
Heit, Joan
Helvira Bus Company, Inc.
Henray Bus Company, Inc.
Herv Bus Company, Inc.
Heslin Bus Corporation
Hild Bus Company, Inc.
Hoboken Transportation Co.
Holt Enderlein Bus Company
Homestead Transit Co., Inc.
Hudson Bus Transportation Co., Inc., The
Hudson Transit Lines, Inc.

Inter-City Transportation Co., Inc.
Irving Transit Company

J & H Bus Co. Inc.
J. & J. Bus Co.
J. & L. Bus Co.
J. & M. Bus Company Inc.
J. R. M. Bus Company
J. S. Bus Corporation, Inc.
Jad Bus Company, Inc.
Jelly, Wm. H. & Co., Inc.
Jimac Bus Company, Inc.
Jocham Bus Corp.
Jordan, Thomas

Kaulker, James Inc.
Kaunas Bus Co.
Keane Bus Company
Keisling, Richard C.
Kennedy, E. J. Inc.
Keogan Bus Company
Key City Bus Co., Inc.
Kima Bus Company, Inc.
Kirslo Bus Company, Inc.
Klyde, Judith
Koll Motor Transportation Company
Korud Bus Company, Inc.
Kowalski, Stephen and Betty, t/a/p
Krebs Bus Company

AUTO BUSES

L. & T. Bus Company, Inc.
Lackawanna Bus Corporation
Ladney Bus Co. Inc.
Lake Region Coach Co., Inc.
Lakeland Bus Lines, Inc.
LeFante Bus Co.
Lefanto Bus Company, Inc., Joseph J.
Leo Bus Co., The
Leo Transit Corp.
Lesta Bus Co., Inc.
Levender Bus Company, Inc.
Lincoln Bus Co.
Lincoln Transit Co., Inc.
Lippman, Norma H.
Lockbourne Manor, Inc.
Lucci Bus Company, Inc.
Lycal Bus Company, Inc.

M.A.B. Corporation
M. B. Bus Co., Inc.
M. & G. Bus Co. Inc.
M-M Bus Corporation
M & W Bus Co. Inc.
Maday and Sons, Inc.
Maday Bus Transportation Co.
Malley Bus Corporation
Manhattan Transit Company
Marathon Bus Line, Inc.
Maresca Bus Company
Maria Transportation Co.
Martucci Bus Company
Marveth Bus Corporation
Massa Bus Company, Inc.
Matlin Bus Corporation
McIntyre, Robert J., Inc.
Meehan, Harry J.
Meltzer Bus Company, Inc.
Merikle, G. H., Inc.
Middlesex Bus Company
Mile Square Transportation Company
Millstone Bus Line, Inc.
Minotto, Ben, Inc.
Minotto Bus Company, Inc.
Molmar Bus Transportation Corporation
Montgomery Bus Corporation
Morris, Charles L., Jr.
Morris, Will, Inc.
Mount Bethel Bus Service, Inc.
Mountain Coaches, Inc.
Murphy, John

AUTO BUSES

Neptune Bus Company, Inc.
New York, Keansburg, Long Branch
Bus Line, Inc.
North Boulevard Transportation Co.
North and South Jersey Bus Co.
Northeast Coach Lines
Novello, Philip J., Inc.
Number 22 Bus Co.
Nunner Bus Company, Inc.

Ocean Drive Tours
Orange and Black Bus Lines, Inc.

P. J. Bus Co.
P Z Bus Company
Pacific Bus Company, Inc.
Page Bus Corp.
Pakenham Bus Company
Palangio, Patsy
Passaic-Athenia Bus Co., Inc.
Peninsula Bus Company
Perno Bus Co., Inc.
Philboro Coach Corp.
Phillip Bus Corporation
Picardi Bus Company, Inc.
Pierro, G. & D., Bus Co.
Pierro & Son Inc.
Pisano Bus Co.
Plainfield Transit, Inc.
PolICASTRO, John A., Ltd.
Pollizzano Transportation Company
Preis' Bus Corporation
Prime Bus Company, Inc.
Prince Bus Corporation
Public Service Coordinated Transport

R.J.S. & A.L.Z. Bus Corporation
R. & W. Inc.
Raimondo, Dominick, Inc.
Ramo Bus Corporation
Red Arrow Lines, Inc.
Rex Bus Co.
Riccio, Frank, & Sons, Inc.
Rockland Coaches, Inc.
Roman Bus Company, Inc.
Roslyn Bus Co.
Rossmeyer & Weber Bus Lines, Inc.
Rubenstein Bus Co.
Ru-Mor Bus Co. Inc.
Ryan, Margaret J.

AUTO BUSES

S. & A. Bus Corporation
S. & G. Bus Company, Inc.
S. & T. Bus Company, Inc.
Safeway Trails, Inc.
Saffron Bus Company, Inc.
Saks Bus Transport Company, Inc.
Salmic Bus Co. Inc.
Sands Bus Co. Inc.
Sarnella Transportation Co.
Scerbo Bus Co.
Schultz, Meyer, Inc.
Seidler Bus Inc.
Serec Bus Company, Inc.
Serv-Well Bus Co.
Shannon, E. J., Bus Co., Inc.
Silberfein, Jane E.
Silver Bus Co., Inc.
Smith, Edward D., Bus Co., Inc.
Smith, Florence
Sokar Bus Co., Inc.
Sokolow & Glick Inc.
Solcot Bus Co.
Somerset Bus Co., Inc.
Sommer Bus Company, Inc.
Sostman Bus Corporation
South Orange Avenue Bus Co.
Standard Bus Corporation
Starr Transit Co., Inc.
Storoh Bus Company, Inc.
Struble, Gorman
Sturtz, Edward, Bus Co., Inc.
Suburban Transit Corp.
Superior Bus Co.
Sweeney, Edward, Inc.

Takrab Bus Company, Inc.
Tedesco Bus Co. Inc.
Terrace Bus Corporation
Terry Bus Company, Inc.
Theresa Transportation Co.
Tomaszeski, Amelia
Trackless Transit, Inc.
Trans-Bridge Lines, Inc.
Tufano Bus Corporation

Unity Bus Company, Inc.

Vailsburg Bus Co., Inc.
Valeriotte Bus Co., Inc.
Van Buren Bus Company

AUTO BUSES

Vanderhoof, E., & Sons
Vistar Bus Company, Inc.

Warwick, Greenwood Lake and New York
Transit, Inc.
Wehrle, Fredrick J., d/b/a Wehrles Bus Service
Weiner Bus Company, Inc.
Wendt Bus Company, Inc.
Wernicki, Edward S.
Wernicki, John L.
West Side Bus Corporation
West Morris Transit, Inc.
West Wildwood Bus Line
Winterfield, Leo
Wohlgemuth Bus Co., Inc.
Woods & Costa, Inc.

ELECTRIC

Atlantic City Electric Company
Jersey Central Power & Light Company
New Jersey Power & Light Company
Public Service Electric and Gas Company
Rockland Electric Company
Sussex Rural Electric Cooperative

EXPRESS

Railway Express Company

GAS

Elizabethtown Gas Company
New Jersey Natural Gas Company
Northwest Jersey Natural Gas, Inc.
Public Service Electric and Gas Company
South Jersey Gas Company
Warren County Gas Co.

RAILROADS

Class I—Operating Railroads

The Central Railroad Company of New Jersey
Erie-Lackawanna Railroad Company
Lehigh Valley Railroad Company
The New York Central Railroad Company
Pennsylvania-Reading Seashore Lines
The Pennsylvania Railroad Company
Reading Company

RAILROADS

Class II—Operating Railroads

Black River & Western Corp.
East Jersey Railroad and Terminal Company
Hoboken Shore Railroad
The Lehigh and Hudson River
Railway Company
Morris County Central Railroad
Morristown & Erie Railroad Company
Mount Hope Mineral Railroad Company
The New Jersey and New York
Railroad Company
The New York and Long Branch
Railroad Company
New York, Susquehanna and Western
Railroad Company
Pennsylvania and Atlantic Railroad Company
Rahway Valley Company, Lessee
Raritan River Rail Road Company
The Staten Island Rapid Transit
Railway Company
Trenton-Princeton Traction Company
The Union Transportation Company
Wharton and Northern Railroad Company

RAILROADS

Non-Operating Railroads

Bay Shore Connecting Railroad Company
The Delaware and Bound Brook
Railroad Company
The Dover and Rockaway Railroad Company
Hoboken Railroad, Warehouse and Steamship
Connecting Company
Pennsylvania Tunnel and Terminal
Railroad Company
Penndel Company
The Port Reading Railroad Company
Rahway Valley Line
Rahway Valley Railroad Company
Raritan Terminal and Transportation Company
The United New Jersey Railroad and
Canal Company
West Jersey and Seashore Railroad Company

PIPELINE

Buckeye Pipe Line Company

SEWERAGE

Atlantic City Sewerage Company

Bayshore Sewerage Company
Bell's Lake Sanitation Co.
Birch Hill Park Disposal Co.
Brierwood Sanitation Co.
Buckingham Utilities, Inc.
Budd Lake Sewerage Company

Central Jersey Sewerage Company

Edenwood Sewer Company

Forsgate Sanitation, Inc.
Freehold Sewer Company

Gibbsboro Sewerage Corporation
Green-Fields Sanitary Improvement Company

Harmony Sewer Company, Inc.
High Ridge Sewer Co.

LaGorce Square Sewerage Corporation
Lake Valley Sewer Company
Lakewood Water Company
Laurel Sanitation Company
Lynpark Utility Company

Marlton Sewerage Corporation
Maxim Sewerage Corporation
Mid-Jersey Sewerage Co. Inc.
Monmouth Sanitation Company
Mount Laurel Sewerage Corporation
Mystic Isles Sewerage Company, Inc.

Ocean City Sewer Service Company

Pine Brook Sewer Company, Inc.

Raritan Valley Sanitation Company

Southern Gulf Sewerage Company
Southampton Sewerage Co.
South Lakewood Sewer Company
Sunbury Village Sewer Company

Valley Road Sewerage Company

West Windsor Sewerage Company
Woodbury Terrace Sewerage Corp.
Woodcrest Sewerage Corp.
Wynnewood Sewerage Utility Company

SUBWAY

Public Service Coordinated Transport

TELEGRAPH

Western Union Telegraph Company

TELEPHONE

Delaware Valley Telephone Company
Farmers Union Telephone Company
Hillsborough & Montgomery
Telephone Company
New Jersey Bell Telephone Company
New Jersey Telephone Company
United Telephone Company of New Jersey
Warwick Valley Telephone Company
West Jersey Telephone Co.

WATER

Aldrich Water Company
Atlantic County Water Company of
New Jersey

Barneгат Water Company
Bayville Water Co., Inc.
Bell's Lake Water Co.
Berkeley Water Company
Bernards Water Company, The
Birch Hill Park Water Co.
Blackwood Water Company
Bound Brook Water Company, The
Brookwood Musconetcong River Estates
Water System
Buckhorn Springs Water Company
Budd Lake Water Company
Blair Academy Water Department

Califon Water Company, Inc., The
Camp Meeting Association of the Newark Con-
ference of the Methodist Episcopal Church
Cedar Glen West, Inc.
Cedar Heights Water Co.
Central Jersey Water Company
Cliffwood Beach Water Company
Columbus Water Company, The
Corson's Inlet Water Company
Commonwealth Water Company, The
Crosswicks Water Company

Delaware Valley Water Company
Dunn & Dunn, Inc.

WATER

Edenwood Water Company
Elizabethtown Water Company
Ewing Water Supply Co.

Fayson Lake Water Company
Flanders Water Company, Inc.
Forsgate Water Co.
Fortescue Realty Co.
Freehold Water & Utility Co.
Frenchtown Water Company
Fries Mill Water Company

Glen Acre Water Company
Glen Gardner Water Company, The
Gordon's Corner Water Company
Gravity Water Supply Company
Green-Fields Water Co.

Hackensack Water Company
Hager Water Company
Hamilton Square Water Company
Hampton Hills Water Company
Hampton Lakes Water Co.
Hedden Water Company
High Crest Lake Water Co., Inc.
Highland Lakes Improvement Company
Highland Water Company
High Ridge Water Co.
Hillsborough Water Company
Hollywood Manor Water Company
Hopatcong West Shore Water Company

Indian Surf Beach Water Company
Ivystone Water Works

Jamesburg Water Company
Junction Water Company, The

Kingston Water Company

Lake Hopatcong Water Corporation
Lake Lenape Water Co.
Lake Mohawk-Sparta Water Company
Lake Tamarack Water Company
Lake Valley Water Company
Lakes Water Company, The
Lakewood Water Company
Lambertville Water Company
Lawrenceville Water Company
Lincoln Park Water Company
Long Beach Water Company

WATER

Lower Township Water Company
Lopatcong Water Company
Lumberton Light, Water and
Sewerage Company

Madison Water Company
Madoc Water Company
Mantua Water Company
Medford Water Co.
Mid-Jersey Water Co., Inc.
Middlesex Water Company
Midtown Water Company
Mine Hill Water Company
Monmouth Consolidated Water Company
Morris & Sussex Water Service, Inc.
Morristown Water Department, Town of
Mt. Arlington Service Co.
Mount Holly Water Company, The
Mount Laurel Water Corporation
Mystic Isles Water Company, Inc.
Mount Arlington Water Company

Neptunus Water Company
New Egypt Water Company
New Jersey Water Service Company
New Jersey Water Company

Ocean City Water Service Company
Ocean County Water Company

Parkway Water Company
Penns Neck Water System
People's Water Company, The
Pennsgrove Water Supply Company
Pineland Water Co.
Pinewald Water and Utility Corporation
Post Brook Water Company
Pottersville Water Company
Pinecrest Improvement Association
Princeton Water Company, The
Prospect Point Water Company

Rancocas Woods Water Co.
Reliable Water Company

WATER

Ridgedale Water Company
Ridge Water Company
Roxbury Water Company
Rosemont Water Company

Seaview Water Company
Selengut, Manuel and David
d/b/a S&S Construction Co.
Sewell Water Company
Shark River Hills Water Company
Shore Hills Water Company
Shore Water Company
Skyline Lakes Corp.
Somerville Water Company
Somerville Water Company, The
South Jersey Water Supply Co.
South Lakewood Water Company
Sparta Mountain Water Company
Stafford Water Company
Sunbury Village Water Company
Stewartsville Water Company
Stonewald Park Association
Southern Gulf Water Company
Steiner, Elizabeth F., t/a Crestmont Park
Water Co.

Toms River Water Company
Trenton, City of
Tuckerton Water Works Co.

Village Water Company
Vincentown Water Company

Washington Water Company, The
Washington Valley Water Co.
West Jersey Water Service, Inc.
West Keansburg Water Company
West Windsor Water Company
Willow Rise Water Company, Inc.
Windbeam Water Company
Woodbine Water Company

Zinnie, Frank, d/b/a South Fortescue
Water Works

