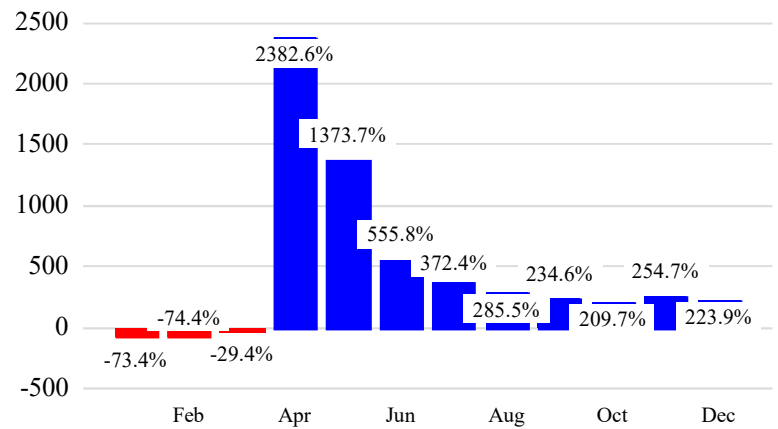


Revenue Passengers

	Curr Month	% Change
	9,492,636	223.9% ▲
Domestic	6,932,117	230.9%
International	2,560,519	206.2%
Non-Revenue	262,292	121.4%

Load Factors	Curr Month	Avg Load Factor
Domestic	75.1%	72.8%
International	67.3%	

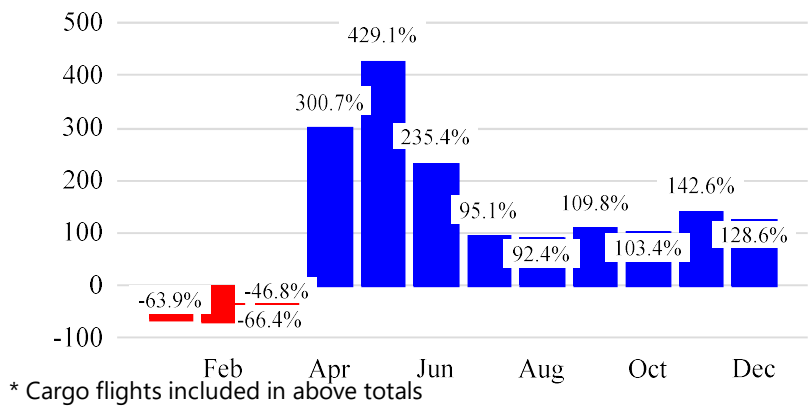
Year over Year % Change in Revenue Passengers - 12 Months



Total Flights

	Curr Month	% Change
	97,113	125.3% ▲
Excl GA	94,235	128.6% ▲
Domestic	75,220	148.0%
International	19,015	74.8%
Gen Aviation	2,878	52.0%
Cargo Flights*	4,578	-15.8%

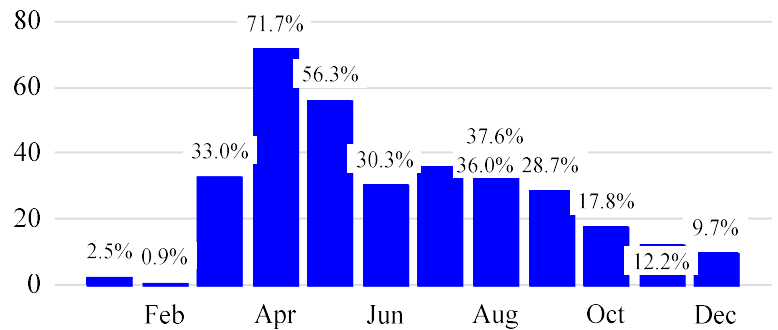
Year over Year % Change in Total Flights (Excl GA) - 12 Months



Cargo (Short Tons)

	Curr Month	% Change
	219,346	9.7% ▲
Domestic	101,129	-3.3%
International	118,217	23.9%
Mail	18,119	24.9%

Year over Year % Change in Cargo - 12 Months



Top 5 Declines in Revenue Passengers by Airline

Airline	Pax Decline	% Decline
ROYAL AIR MAROC	(6,756)	-93.0%
EASTERN	(6,742)	-61.0%
EVA	(292)	-15.0%

Top 5 Increases in Revenue Passengers by Airline

Airline	Pax Increase	% Increase
United	1,637,452	190.0%
DELTA	1,371,048	226.0%
AMERICAN	1,156,183	437.0%
JETBLUE AIRWAYS	1,027,043	178.0%
SOUTHWEST AIRLINES	171,849	315.0%

Airport Summary Statistics

JFK Summary

	Current Month	YoY %
Total Revenue Pax	3,811,775	241.0
Total Flights Including GA	33,060	105.0
Total Cargo (Short Tons)	132,663	13.8

EWR Summary

	Current Month	YoY %
Total Revenue Pax	3,477,630	169.0
Total Flights Including GA	34,528	95.0
Total Cargo (Short Tons)	83,362	4.3

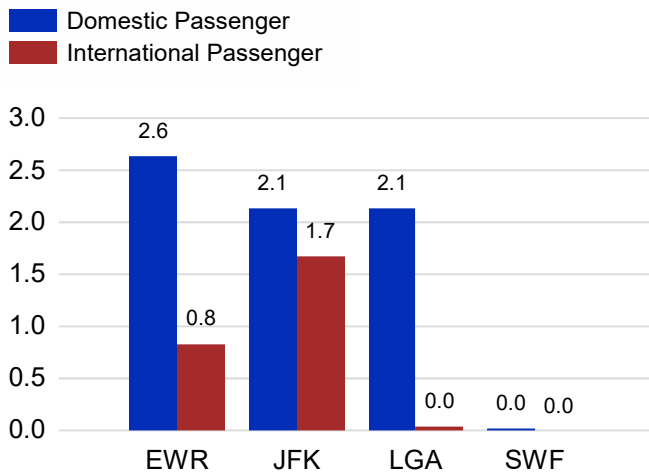
LGA Summary

	Current Month	YoY %
Total Revenue Pax	2,183,346	319.0
Total Flights Including GA	27,385	255.0
Total Cargo (Short Tons)	553	-1.0

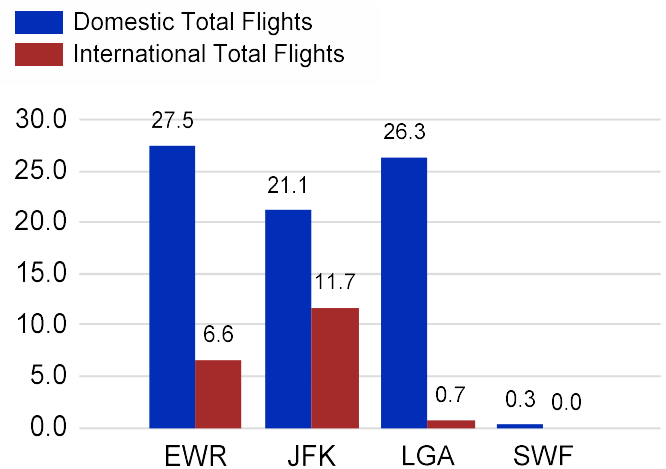
SWF Summary

	Current Month	YoY %
Total Revenue Pax	19,885	544.0
Total Flights Including GA	2,140	52.0
Total Cargo (Short Tons)	2,769	-5.0

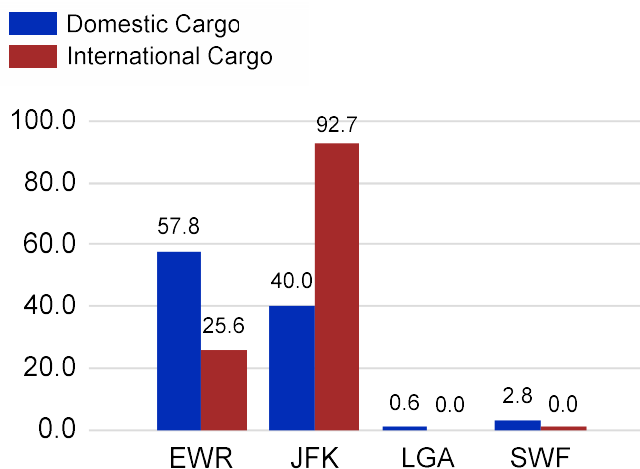
Total Passengers by Airport (Millions)



Total Flights by Airport (Thousands)



Total Cargo by Airport (Thousands of Short Tons)



12 Months Ending Passenger & Freight Statistics

Top 20 Airlines Ranking by Passengers & Freight: 12 Months Ending Dec 2021

Airline Name	Domestic	International	Total Pax	% of Tot	Airline Name	Short Tons	% of Tot
United	14,788,469	4,317,182	19,105,651	25.29%	FEDERAL EXPRESS	451,703	19.13%
DELTA	14,957,375	2,507,913	17,465,288	23.12%	UNITED	220,576	9.34%
JETBLUE AIRWAYS	10,603,253	4,246,104	14,849,357	19.66%	UNITED PARCEL	213,145	9.03%
AMERICAN	8,848,706	1,112,453	9,961,159	13.19%	DELTA	90,524	3.83%
SPIRIT AIRLINES	2,730,492	0	2,730,492	3.61%	ATLAS AIR	87,222	3.69%
SOUTHWEST AIRLINES	1,599,090		1,599,090	2.12%	KALITTA AIR LLC	81,438	3.45%
FRONTIER AIRLINES	966,897	52,720	1,019,617	1.35%	AIR TRANSPORT INT'L.(BAX Inc.)	78,667	3.33%
ALASKA AIRLINES	987,369		987,369	1.31%	AMERICAN	68,901	2.92%
TURKISH AIR		484,049	484,049	0.64%	CHINA AIRLINES (CAL)	66,368	2.81%
EMIRATES AIRLINES		447,612	447,612	0.59%	CATHAY PACIFIC	60,096	2.55%
AIR CANADA		432,309	432,309	0.57%	CARGOLUX AIRLINES	59,898	2.54%
AVIANCA		379,878	379,878	0.50%	KOREAN	59,125	2.50%
COPA AIRLINES		316,094	316,094	0.42%	ABX AIR INC	50,659	2.15%
QATAR AIRWAYS		305,993	305,993	0.41%	LUFTHANSA CARGO	36,618	1.55%
AIR FRANCE		289,747	289,747	0.38%	SAUDI ARABIAN AIRLINES	32,065	1.36%
LUFTHANSA CARGO		286,742	286,742	0.38%	BRITISH AIRWAYS	31,022	1.31%
BRITISH AIRWAYS		258,379	258,379	0.34%	VIRGIN ATLANTIC	30,876	1.31%
AEROMEXICO		257,711	257,711	0.34%	QATAR AIRWAYS	30,362	1.29%
EL AL		248,649	248,649	0.33%	TURKISH AIR	29,455	1.25%
ALLEGiant AIR	244,651		244,651	0.32%	AIR FRANCE	26,560	1.13%

Passengers & Freight by Market - 12 Months Ending

Market	Passengers	Freight (Short Tons)
TRANSATLANTIC	8,428,585	850,294
CANADA	587,859	1,966
CARIBBEAN + BERMUDA	5,961,593	13,887
CENTRAL AND SOUTH AMERICA	2,510,503	35,583
DOMESTIC	53,673,634	1,046,715
MEXICO	1,802,333	10,323
TRANSPACIFIC	344,200	392,322
PUERTO RICO	2,235,008	9,755

Additional Data

Airline Schedules (ADI): Non-Stop Destinations

	Region	Flights (Daily)	Cities
Domestic	Domestic	2282.1	104
	Puerto Rico	37.5	3
	Total	2,319.6	107.00
International	Canada	83.2	4
	Caribbean & Bermuda	161.5	24
	Central & South America	87.2	19
	Mexico	46.2	5
	Trans-Atlantic	210.2	47
	Trans-Pacific	16.4	9
	Total	604.6	108.00
	Total	2,924.2	215.00

Airline Schedules (ADI): Carriers & Aircraft Type

	Aircraft Type	Flights (Daily)	Carriers
Domestic	Commuter	974.2	5
	General Aviation	2.0	1
	Narrow Body	1251.0	10
	Wide Body	92.4	4
Total	Total	2,319.6	20.00
International	Commuter	70.7	6
	Narrow Body	301.8	20
	Wide Body	232.1	51
	Total	604.6	77.00
Total	Total	2,924.2	97.00

Passenger Demographics (ACI ASQ Surveys - 2019)

Connect		Trip Type		Gender	
Local Origin/Destination	83.7%	Business	21.9%	F	47.6%
Connecting	16.3%	Leisure	78.1%	M	52.4%
Transport Mode		Annual Flights		Residency	
Bus/Shuttle	9.7%	1-2	49.7%	United States	22.9%
Other	11.3%	3-5	29.8%	Other	77.1%
Private/Company Car	42.0%	6-10	12.6%		
Rail/Subway	6.8%	11-20	4.7%		
Rental Car	10.1%	21+	3.2%		
Taxi/Limo	20.1%				

Ground Transportation

	Curr Month	% Change		Curr Month	% Change
<i>Paid Parked Cars</i>	387,172	131.9	<i>Total Air Train Passengers</i>	1,992,456	179.7
<i>GTC Bookings</i>	0		<i>Paid Howard Beach Passengers</i>	100,065	280.1
<i>Airport Coach Passengers</i>	23,219	1,218.5	<i>Paid Jamaica Passengers</i>	379,478	341.7
<i>Taxis Dispatched</i>	296,822	475.3	<i>Paid EWR Passengers</i>	203,645	300.9
			<i>On-Airport (Unpaid) Passengers</i>	1,309,268	138.3

Airlines for American Carriers (USA)

	Curr Month	% Change
<i>Freight:revenue ton miles (000)</i>	0	-100.0

Regional Airports: Other

	Curr Month	% Change
<i>TEB flight movements</i>	15,442	99.2
<i>ISP Total passengers</i>	119,587	212.0
<i>HPN Total passengers</i>	119,995	222.5