

NUMBERS, LETTERS
AND TITLES

OF

STATE APPROPRIATIONS
ACCOUNTS CURRENT

FOR

Fiscal Year, July 1, 1942—June 30, 1943

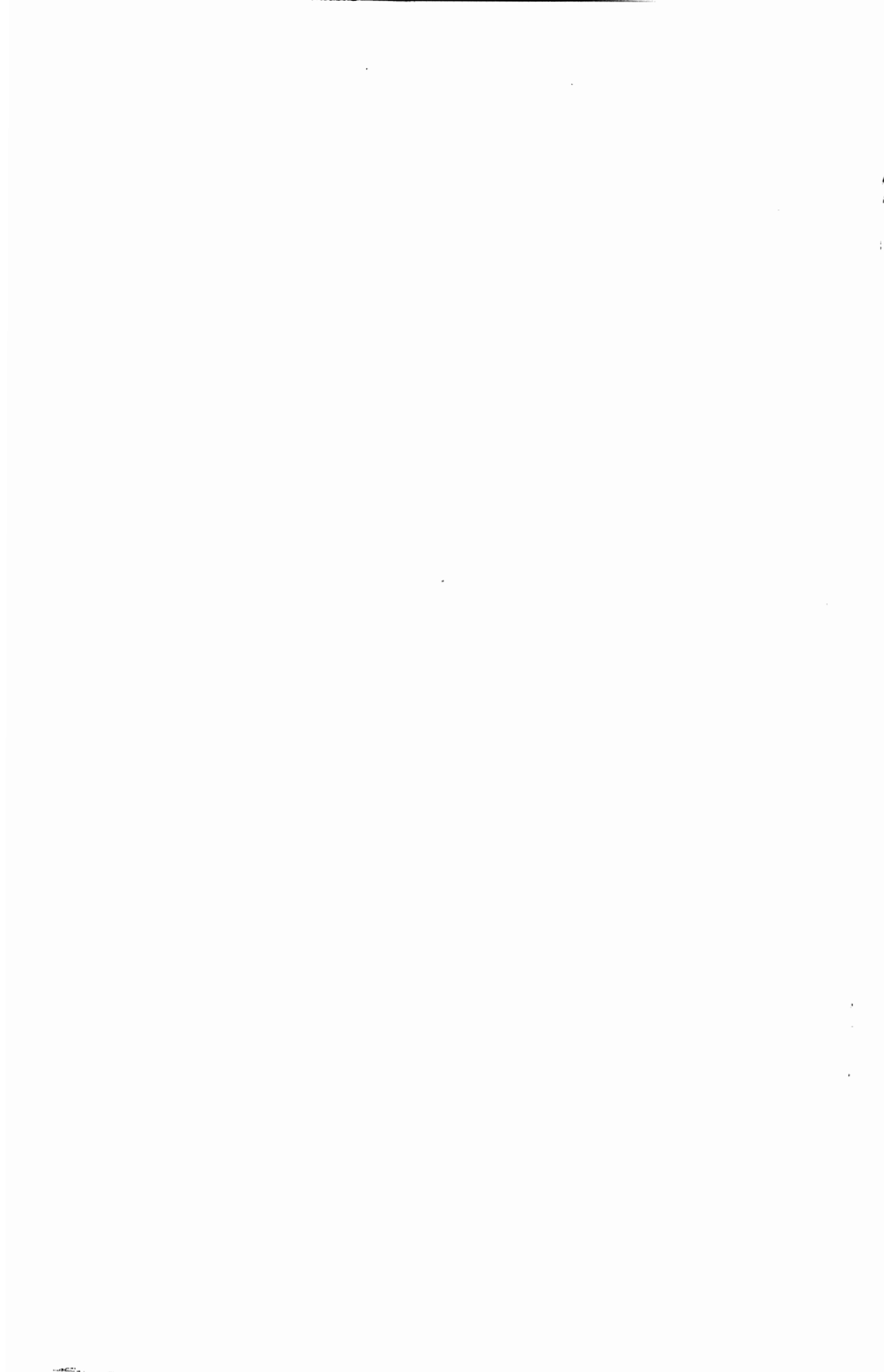
For use in connection with the operations of
Chapter 29, P. L. 1942

PROPERTY OF
NEW JERSEY STATE LIBRARY

No requisition or invoice without number, letter
and title plainly set forth will receive attention

186 W. STATE ST. PO BOX 520
TRENTON, NJ 08625-0520

HOMER C. ZINK
Comptroller



NUMBERS, LETTERS
AND TITLES

OF

STATE APPROPRIATIONS
ACCOUNTS CURRENT

FOR

Fiscal Year, July 1, 1942—June 30, 1943

For use in connection with the operations of
Chapter 29, P. L. 1942

No requisition or invoice without number, letter
and title plainly set forth will receive attention

HOMER C. ZINK
Comptroller

To All Departments and Institutions

This handbook of appropriations for the fiscal year beginning July 1, 1942, and ending June 30, 1943, is published for the benefit and information of all parties concerned.

The several items composing the act herein contained are hereby declared to be appropriations for the fiscal year above mentioned for the purposes therein expressed.

Attention is directed to section one of the act with reference to the availability of the appropriations for the period of two months after the close of each fiscal year. State officers are advised that by reason of the enactment of this clause all unexpended balances will arbitrarily lapse at the close of the two months' period, except it be reserved as provided therein.

All miscellaneous receipts must be forwarded monthly in accordance with the law, and each institution will be credited with the amount so received, but cannot use any sum in excess of the amount appropriated by the Appropriation Committee.

Every effort will be made by this Department to facilitate the payment of bills, and there should be no difficulty in each department and institution forwarding schedules of bills within five days after the close of each month. Schedules should not be held simply because some firm with whom the institution is doing business fails to send in their invoice at the proper time. It might be better to forward a supplemental schedule later in the month.

This Department is enabled at all times to pass bills to payment promptly, and it is sincerely hoped that bookkeepers of institutions will make every effort to forward their schedules as frequently as they desire, and that they call upon this Department whenever it is desirable for such assistance as may be needed to expedite payments.

Institutional bookkeepers are directed to pay strict attention to copies of requisitions forwarded by the Purchasing Agent, and debit same against their appropriation when received. They become debits against the appropriation notwithstanding the fact that the goods ordered under the requisition have not been received. A prompt compliance with this will make it impossible for bookkeepers to carry balances different from this Department, as has occurred frequently in the past.

In submitting vouchers for reimbursement of personal expenditures, it is necessary to adhere to all travel regulations promulgated by the Governor and this office.

CHAPTER 29, LAWS OF 1942

AN ACT making appropriations for the support of the State government and for several public purposes for the fiscal year ending June thirtieth, one thousand nine hundred and forty-three, and regulating the disbursement thereof.

ANTICIPATED REVENUES OF THE GENERAL STATE
FUND FOR THE FISCAL YEAR 1942-43

Estimated deficit, July 1, 1942 \$4,850,000 00

Revenues

Transfer inheritance taxes	\$5,500,000 00
Main Stem and Franchise-excise Taxes	14,500,000 00
Miscellaneous corporation taxes ..	3,000,000 00
Foreign corporation taxes	400,000 00
Beverage taxes	8,500,000 00
Beverage licenses	534,760 00
Foreign insurance corporation taxes	2,419,000 00
Fertilizer inspection fees, et cetera	57,500 00
Department of Banking and Insurance	997,795 00
Attorney-General's Department ..	23,000 00
Commissioner of Finance	1,250 00
Secretary of State	275,000 00
Clerk in Chancery	340,000 00
Clerk of the Supreme Court	95,000 00
Interest on deposits	1,000 00
Real Estate Commission	95,000 00
Department of State Police	3,265 00
State Board of Beauty Culture Control	76,000 00
Board of Barber Examiners	35,000 00
Commissions	51,860 00

Judicial fees	15,000 00
Board of Commerce and Navigation	13,475 00
Shell fisheries	33,050 00
Department of Labor	84,460 00
Dividends	18,870 00
Athletic Commissioner	60,000 00
State Department of Local Government	90,000 00
Department of Health	94,000 00
Tenement House Supervision	11,800 00
Department of Conservation and Development	42,500 00
State Tax Department, Public Utility Division	16,550 00
Department of Weights and Measures	80,000 00
Health Officers, Port of Perth Amboy	200 00
State Board of Tax Appeals	300 00
Racing Commission	250,000 00
Academic Certificate Fund	16,000 00
Manual Training and Industrial School for Colored Youth	67,000 00
School for the Deaf	1,800 00
State Teachers College, Glassboro:	
Extension course fees	15,000 00
Tuition fees	34,350 00
State Teachers College, Jersey City:	
Extension course fees	8,500 00
Tuition fees	37,950 00
State Teachers College, Newark:	
Extension course fees	38,000 00
Tuition fees	50,570 00
State Teachers College, Paterson:	
Extension course fees	20,115 00
Tuition fees	30,125 00
State Teachers College, Montclair:	
Extension course fees	32,208 00
Tuition fees	50,700 00
Boarding hall fees	59,968 00

State Teachers College, Trenton:	
Extension course fees	14,650 00
Tuition fees	62,700 00
Boarding hall fees	129,000 00
State Board of Examiners	15,000 00
Agricultural Experiment Station..	56,200 00
Department of Agriculture	6,035 00
State Employees' Retirement Sys- tem	3,240 00
Rehabilitation Commission	5,400 00
Colony for Feeble-Minded Males, New Lisbon	165,000 00
Colony for Feeble-Minded Males, Woodbine	127,000 00
Commission for the Blind	16,000 00
Home for Disabled Soldiers, Menlo Park	14,600 00
Home for Disabled Soldiers, Vine- land	24,000 00
North Jersey Training School, Totowa	122,000 00
Reformatory, Annandale	2,000 00
Reformatory, Rahway	300 00
Sanatorium for Tuberculous Dis- eases	125,000 00
State Home for Boys	2,800 00
State Home for Girls	1,000 00
State Hospital, Greystone Park ..	1,075,000 00
State Board of Children's Guard- ians	133,225 00
State Hospital, Marlboro	450,000 00
State Hospital, Trenton	600,000 00
State Prison	500 00
Village for Epileptics	267,500 00
Vineland State School	215,000 00
Miscellaneous Sources	25,000 00
	<hr/>
Total revenues	\$41,836,071 00

Transfers

Commerce and Navigation, from School Fund	\$50,000 00
State Water Policy Commission, from Water Supply Fund	47,515 00
Rehabilitation Commission, from Federal Aid	62,700 00
Amount transferred from Highway Fund to State Fund for general purposes	4,260,000 00
Total transfers	<u>\$4,420,215 00</u>
Total anticipated in the State Fund	<u><u>\$41,406,286 00</u></u>

BE IT ENACTED *by the Senate and General Assembly of the State of New Jersey:*

1. The following sums or so much thereof as may be necessary, be and they are hereby appropriated out of the State fund for the respective public officers and for the several purposes herein specified, for the fiscal year ending on the thirtieth day of June, in the year one thousand nine hundred and forty-three and shall be available for expenditure during said fiscal year, and for a period of two months thereafter to pay obligations incurred during said fiscal year only. At the expiration of said two months' period all unexpended balances, unless specifically held by contracts on file with the Comptroller of the Treasury, shall lapse into the State treasury, or in case of appropriations from special funds shall lapse to the credit of such special funds.

A. EXECUTIVE AND ADMINISTRATIVE.

A 1. Attorney-General's Department.

Salaries:		<i>Account No.</i>
Attorney-General ...	\$7,000 00	A 1 A
Assistant Attorney-General	3,600 00	A 1 D-a
Second Assistant Attorney-General	12,000 00	A 1 D-b
Assistant Attorney-General	5,000 00	A 1 D-c
Assistant Attorney-General	6,000 00	A 1 D-d
Assistant Attorney-General	6,000 00	A 1 D-e
Assistant Attorney-General	6,000 00	A 1 D-f
Senior legal assistant	6,500 00	A 1 D-g
Senior legal assistant	6,500 00	A 1 D-h
Legal assistant	5,500 00	A 1 D-i
Legal assistant	5,000 00	A 1 D-j
Principal law clerk ..	3,000 00	A 1 D-k
Legal assistant	3,000 00	A 1 D-l
Senior law clerk-stenographer	2,640 00	A 1 D-m
Senior law-clerk stenographer	2,280 00	A 1 D-n
Compensation for other assistants ...	10,260 00	A 1 D-o
	<hr/>	\$90,280 00
 Materials and Supplies:		
Stationery and office supplies	\$800 00	A 1 E-ga
Law books	500 00	A 1 E-k
Vehicular transportation supplies	1,800 00	A 1 E-h
Office equipment replacement	400 00	A 1 E-ia
	<hr/>	3,500 00

Services Other Than Personal:

		<i>Account No.</i>
Traveling expenses ..	\$400 00	A 1 F-a
Miscellaneous ex- penses	800 00	A 1 F-t
Insurance (other than fire)	300 00	A 1 F-c
Expenses in connec- tion with escheat cases	150 00	A 1 F-v
	1,650 00	

Division of Securities.**Salaries:**

Assistant Attorney- General	\$7,500 00	A 1 D-p
Special Assistant At- torney-General	4,000 00	A 1 D-q
Investigator	2,220 00	A 1 D-r
Compensation for clerks and stenog- raphers	6,240 00	A 1 D-s
	19,960 00	

Materials and Supplies:

Stationery and office supplies	\$300 00	A 1 E-gb
Office equipment re- placement	100 00	A 1 E-ib
	400 00	

Services Other Than Personal:

Expenses of investigations	5,000 00	A 1 F-u
----------------------------------	----------	---------

5,000 00
\$120,790 00

A 2. Budget Commission.

		<i>Account No.</i>
Salaries:		
Budget Commissioner	\$10,000 00	A 2 A
Compensation for as- sistants	12,060 00	A 2 D
	<hr/>	
	\$22,060 00	
Materials and Supplies:		
Stationery and office supplies	\$250 00	A 2 E-g
Vehicular transporta- tion supplies	300 00	A 2 E-h
Office equipment re- placement	450 00	A 2 E-i
	<hr/>	
	1,000 00	
Services Other Than Personal:		
Printing	\$4,200 00	A 2 F-e
Miscellaneous ex- penses	600 00	A 2 F-t
	<hr/>	
	4,800 00	
	<hr/>	
	\$27,860 00	
Less State Highway Fund credit	3,000 00	
	<hr/>	
	\$24,860 00	
	<hr/> <hr/>	

A 3. Civil Service Commission.

Salaries:		
Commissioners	\$18,000 00	A 3 B
Chief examiner and secretary	10,000 00	A 3 A
Compensation for other officers and employees	186,640 00	A 3 D
	<hr/>	
	\$214,640 00	

Materials and Supplies:

		<i>Account No.</i>
Stationery and office supplies	\$12,000 00	A 3 E-g
Office equipment replacement	4,500 00	A 3 E-i
Vehicular transportation supplies	900 00	A 3 E-h
	<u>17,400 00</u>	

Services Other Than Personal:

Traveling expenses ..	\$4,000 00	A 3 F-a
Advertising	2,000 00	A 3 F-f
Rent	1,500 00	A 3 F-g
Printing, binding, photographing and blueprinting	600 00	A 3 F-e
Miscellaneous expenses	750 00	A 3 F-t
	<u>8,850 00</u>	
	<u>\$240,890 00</u>	

A 4. Comptroller's Department.**Salaries:**

Comptroller	\$6,000 00	A 4 A
Chief clerk and deputy comptroller	7,000 00	A 4 D-a
Chief auditor and accountant	6,500 00	A 4 D-b
Assistant chief auditor and accountant.	4,200 00	A 4 D-c
Head clerk-bookkeeper	3,600 00	A 4 D-d
Assistants and clerical services	71,830 00	A 4 D-e
	<u>\$99,130 00</u>	

Materials and Supplies:		
Stationery and office supplies	\$4,600 00	<i>Account No.</i> A 4 E-g
Office equipment replacement	250 00	A 4 E-i
	<hr/>	4,850 00
Services Other Than Personal:		
Premium on surety bonds	\$300 00	A 4 F-c
Traveling expenses ..	1,150 00	A 4 F-a
Miscellaneous expenses	900 00	A 4 F-t
	<hr/>	2,350 00
		<hr/>
		\$106,330 00
Less State Highway Fund credit		3,000 00
		<hr/>
		\$103,330 00
		<hr/> <hr/>

A 5. Commissioner of Finance.

Salaries:		
Commissioner	\$10,000 00	A 5 A
Deputy commissioner	5,000 00	A 5 D-a
Compensation for assistants and services pursuant to R. S. 52:23-16	19,080 00	A 5 D-b
	<hr/>	\$34,080 00
Materials and Supplies:		
Stationery and office supplies	\$650 00	A 5 E-ga
Office equipment replacement	250 00	A 5 E-ia
Vehicular transportation supplies	250 00	A 5 E-ha
	<hr/>	1,150 00

Services Other Than Personal:*Account No.*

Other miscellaneous expenses	375 00	A 5 F-t
The balance in the reclamation expense account as of June 30, 1942, is hereby reappropriated.		

Capitol Post Office.**Salaries:**

Compensation for employees	15,640 00	A 5 D-c
----------------------------------	-----------	---------

Materials and Supplies:

Vehicular transportation supplies	\$200 00	A 5 E-hb
Stationery and office supplies	300 00	A 5 E-gb
Office equipment replacement	100 00	A 5 E-ib
	<u>600 00</u>	

Services Other Than Personal:

Postage	\$139,140 00	A 5 F-d
Insurance and Surety Bonds	160 00	A 5 F-c
	<u>139,300 00</u>	

Telephone and Telegraph.**Salaries:**

Compensation for operators and employees	28,467 00	A 5 D-e
--	-----------	---------

Services Other Than Personal:

Telephone and telegraph	109,195 00	A 5 F-h
-------------------------------	------------	---------

	<u>\$328,807 00</u>
	<u><u> </u></u>

A 6. Emergency Fund.

For the Governor, to enable him to meet any emergency requiring the expenditure of money not otherwise appropriated, and to cover any incidental personal expense or the expenses of commissioners appointed by him under statute, or in his discretion

Account No.
\$10,000 00 **A 6 I**

A 7. Executive Department.

Salaries:

Governor	\$20,000 00	A 7 A
Secretary to Governor	5,000 00	A 7 D-a
Executive Secretary .	3,600 00	A 7 D-b
Assistant secretary to Governor	4,000 00	A 7 D-c
Compensation for assistants	36,280 00	A 7 D-d
	\$68,880 00	

Materials and Supplies:

Stationery and office supplies	2,000 00	A 7 E-g
--------------------------------------	----------	---------

Services Other Than Personal:

Maintenance, cottage at Sea Girt and entertainment therein	\$7,500 00	A 7 F-n
Maintenance of Secretary to the Governor during encampment	1,000 00	A 7 F-u
Miscellaneous expenses	1,300 00	A 7 F-t
	9,800 00	

\$80,680 00

A 8. Secretary of State.

		<i>Account No.</i>
Salaries:		
Secretary	\$6,000 00	A 8 A
Assistant Secretary of State	3,600 00	A 8 D-a
Chief clerk	7,000 00	A 8 D-b
Head clerk	4,500 00	A 8 D-c
Confidential clerk....	3,700 00	A 8 D-d
Compensation for as- sistants	34,860 00	A 8 D-e
	<hr/>	
		\$59,660 00
Materials and Supplies:		
Stationery and office supplies	\$8,000 00	A 8 E-g
Office equipment re- placement	200 00	A 8 E-i
Vehicular transporta- tion supplies	400 00	A 8 E-h
	<hr/>	
		8,600 00
Services Other Than Personal:		
Traveling Expenses .	\$250 00	A 8 F-a
Election expenses ...	26,500 00	A 8 F-u
Photostating copies of certificates of incor- poration	1,500 00	A 8 F-k
Printing copies of the rules of the preroga- tive and the or- phans' court	1,600 00	A 8 F-e
	<hr/>	
		29,850 00
		<hr/>
		<u>\$98,110 00</u>

A 9. State Auditor's Department.

		<i>Account No.</i>
Salaries:		
State Auditor	\$7,500 00	A 9 A
Secretary and confidential clerk	2,500 00	A 9 D-a
Supervising auditor..	4,500 00	A 9 D-b
Field supervisors (3)	10,800 00	A 9 D-c
Auditors (3)	7,020 00	A 9 D-d
Junior auditors (10).	18,960 00	A 9 D-e
Audit clerks (18)....	26,480 00	A 9 D-f
Compensation for assistants	3,420 00	A 9 D-g
	<hr/>	
		\$81,180 00
 Materials and Supplies:		
Stationery and office supplies	\$500 00	A 9 E-g
Office equipment replacement	500 00	A 9 E-i
	<hr/>	
		1,000 00
 Services Other Than Personal:		
Traveling expenses ..	\$6,000 00	A 9 F-aa
Traveling expenses—additional auditors.	5,000 00	A 9 F-ab
Printing and binding.	100 00	A 9 F-e
Miscellaneous expenses	150 00	A 9 F-t
	<hr/>	
		11,250 00
		<hr/>
		<u>\$93,430 00</u>
		<hr/> <hr/>

A 10. State House Commission.

Salaries:

		<i>Account No.</i>
Custodian, State		
House	\$5,000 00	A 10 A
Assistant custodian ..	3,000 00	A 10 D-a
Chief engineer—elec- trician	3,000 00	A 10 D-b
Superintendent of State House Annex and State Office Building	4,500 00	A 10 D-c
Compensation for as- sistants and helpers	210,810 00	A 10 D-d
	<u> </u>	
	\$226,310 00	

Materials and Supplies:

Heat, light, power and electricity	\$60,500 00	A 10 E-c
Stationery and office supplies, furniture and office equipment	2,500 00	A 10 E-g
Other materials and supplies	18,000 00	A 10 E-o
	<u> </u>	
	81,000 00	
Current repairs	27,000 00	A 10 G

Services Other Than Personal:

Insurance (other than fire)	\$1,100 00	A 10 F-c
Freight and express..	350 00	A 10 F-i
Maintenance of Stacy Park and Capitol and annex grounds.	4,000 00	A 10 F-u
Miscellaneous ex- penses	500 00	A 10 F-t
	<u> </u>	
	5,950 00	

Rentals for State Departments in Newark:

Industrial Office Build- ing	\$125,640 00	A 10 F-ga
---------------------------------------	--------------	-----------

Rentals for State Departments in Trenton:		<i>Account No.</i>
Budget Commission..	2,524 64	A 10 F-gb
Department of Weights and Meas- ures	2,400 00	A 10 F-gc
Department of Agri- culture	15,500 00	A 10 F-gd
State Employees' Re- tirement System ..	4,140 00	A 10 F-ge
Department of Labor	21,900 00	A 10 F-gf
Rental for building for State exhibits at Trenton Fair	5,000 00	A 10 F-gg
Department of Con- servation and De- velopment	780 00	A 10 F-gh
State Tax Depart- ment, Beverage Tax Division	3,300 00	A 10 F-gi
State Tax Depart- ment, Engineer's Division	4,320 00	A 10 F-gj
Crippled Children's Commission	1,860 00	A 10 F-gk
Old Age Assistance Commission	4,200 00	A 10 F-gl
Department of Local Government	4,554 00	A 10 F-gm
Department of Avia- tion	900 00	A 10 F-gn
Rentals in Other Cities:		
Associate Justices of Supreme Court of- fices, Camden, Jer- sey City, Atlantic City, Somerville, Morristown, Mill- burn and Montclair	7,320 00	A 10 F-go

Rooms for Courts, Atlantic City, Jersey City, Camden, Elizabeth, Toms River and Newton .	46,877 00	<i>Account No.</i> A 10 F-gp
State Board of Chil- dren's Guardians, Trenton, Jersey City and Morris- town	7,433 00	A 10 F-gq
Chancellor, Rooms for W. P. A. Project ..	900 00	A 10 F-gr
	<u>259,548 64</u>	
	\$599,808 64	
Less State Highway Fund Credit..	20,000 00	
	<u>\$579,808 64</u>	

A 11. Treasurer's Department.

Salaries:

Treasurer	\$6,000 00	A 11 A
Cashier and deputy treasurer	6,000 00	A 11 D-a
Secretary	3,000 00	A 11 D-b
Compensation for other assistants ...	29,820 00	A 11 D-c
	<u>\$44,820 00</u>	

Materials and Supplies:

Stationery and office supplies	\$1,500 00	A 11 E-g
Office Equipment Re- placement	2,500 00	A 11 E-i
	<u>4,000 00</u>	

Services Other Than Personal:		<i>Account No.</i>
Traveling Expenses..	\$125 00	A 11 F-a
Insurance (other than fire)	2,426 00	A 11 F-c
Miscellaneous ex- penses	275 00	A 11 F-t
	<hr style="width: 100%;"/>	
	2,826 00	
	<hr style="width: 100%;"/>	
	\$51,646 00	
	<hr style="width: 100%;"/>	

A 12. State Purchasing Department.

Printing.

Services Other Than Personal:		
Legislative printing..	\$65,000 00	A 12 F-ea
Printing and binding public documents ..	3,000 00	A 12 F-eb
Printing and circulat- ing laws	12,000 00	A 12 F-ec
	<hr style="width: 100%;"/>	
	\$80,000 00	
	<hr style="width: 100%;"/>	

A 13. State Athletic Commissioner.

Salaries:		
Commissioner	\$5,000 00	A 13 A
Compensation for other assistants ...	22,500 00	A 13 D
	<hr style="width: 100%;"/>	
	\$27,500 00	

Materials and Supplies:		
Stationery, office supplies and equipment	500 00	A 13 E-g

Services Other Than Personal:		
Traveling and incidental expenses	3,250 00	A 13 F-a
	<hr style="width: 100%;"/>	
	\$31,250 00	
	<hr style="width: 100%;"/>	

A 14. State Department of Local Government.

		<i>Account No.</i>
Salaries:		
Commissioner	\$10,000 00	A 14 A
Members of board ...	18,000 00	A 14 B
Supervising auditor and secretary	6,000 00	A 14 D-a
Refunding consultant	500 00	A 14 D-b
Assistant supervisors of accounts (2)	6,600 00	A 14 D-c
Senior auditors.....	20,520 00	A 14 D-d
Principal auditors ...	13,920 00	A 14 D-e
Head statistical clerk.	3,000 00	A 14 D-f
Confidential clerk and legal assistant	1,800 00	A 14 D-g
Administrative assist- ant	2,760 00	A 14 D-h
Supervisors of ac- counts (3)	13,500 00	A 14 D-i
Other employees.....	39,560 00	A 14 D-j
	\$136,160 00	
Materials and Supplies:		
Stationery and office supplies	\$2,100 00	A 14 E-g
Office equipment re- placement	900 00	A 14 E-i
	3,000 00	
Services Other Than Personal:		
Traveling expenses ..	\$23,500 00	A 14 F-a
Printing and binding.	5,000 00	A 14 F-e
Miscellaneous ex- penses	1,200 00	A 14 F-t
	29,700 00	
	\$168,860 00	

A 15. State Defense Council.

The unexpended balance June 30, 1942, of the amount appropriated for expenses, pursuant to the provisions of chapter 183, laws of 1941 is hereby reappropriated.

Account No.
A 15 I

A 16. Secretary for Defense.

Expenses of the office of Secretary of Defense, pursuant to chapter 184, laws of 1941 \$22,860 00 A 16 I
The unexpended balance as of June 30, 1942, is hereby reappropriated.

B. LEGISLATIVE.

B 1. Legislature.

Salaries:

Senators and members of General Assembly	\$40,833 32	B 1 B
Compensation for officers and employees	20,000 00	B 1 D
	<u>60,833 32</u>	

Materials and Supplies:

Manuals of the Legislature	4,000 00	B 1 E-k
----------------------------------	----------	---------

Services Other Than Personal:

Indexing Journal and Minutes and other incidental and contingent expenses	35,000 00	B 1 F-u
---	-----------	---------

\$99,833 32

C. JUDICIAL.

C 1. Clerk in Chancery.

		<i>Account No.</i>
Salaries:		
Clerk in Chancery ...	\$6,000 00	C 1 A
Chief clerk	5,500 00	C 1 D-a
Law clerks (2)	10,100 00	C 1 D-b
Compensation for as- sistants	90,420 00	C 1 D-c
	<hr/> \$112,020 00	
Materials and Supplies:		
Stationery and office supplies	\$7,000 00	C 1 E-g
Office equipment re- placement	1,200 00	C 1 E-i
	<hr/> 8,200 00	
Services Other Than Personal:		
Premium on surety bonds	\$460 00	C 1 F-c
Miscellaneous ex- penses	800 00	C 1 F-t
	<hr/> 1,260 00	
	<hr/> <hr/> \$121,480 00	

C 2. Clerk of the Supreme Court.

Salaries:		
Clerk of the Supreme Court	\$6,000 00	C 2 A
Chief clerk	5,500 00	C 2 D-a
Compensation for as- sistants	43,400 00	C 2 D-b
	<hr/> \$54,900 00	

Materials and Supplies:

		<i>Account No.</i>
Stationery and office supplies	\$3,250 00	C 2 E-g
Other materials and supplies	400 00	C 2 E-o
	<hr/>	
		3,650 00

Services Other Than Personal:

Miscellaneous expenses	800 00	C 2 F-t
------------------------------	--------	---------

Additions and Improvements:

The unexpended balance June 30, 1942, of the appropriation for vault equipment is hereby reappropriated.		C 2 H-g
--	--	---------

\$59,350 00

C 3. Court of Chancery.**Salaries:**

Chancellor	\$19,000 00	C 3 A
Vice-Chancellors	180,000 00	C 3 B
Secretaries to Vice-Chancellors	22,400 00	C 3 D-a
Chancellor's secretary	2,500 00	C 3 D-b
Compensation and traveling expenses of sergeants-at-arms	40,240 00	C 3 D-c
Compensation and allowance of Advisory Masters and their official stenographers	22,980 00	C 3 D-d
Compensation of stenographers, and for services pursuant to R. S. 2:2-25 and 2:2-28	55,500 00	C 3 D-e
Compensation of law assistants to Vice-Chancellors ..	15,800 00	C 3 D-f
	<hr/>	
		\$358,420 00

Materials and Supplies:

		<i>Account No.</i>
Stationery and office supplies	\$3,500 00	C 3 E-g
Office equipment replacement	1,000 00	C 3 E-i
Library supplies	1,500 00	C 3 E-k
Vehicular transportation supplies	400 00	C 3 E-h
	<hr/>	
		6,400 00

Services Other Than Personal:

Traveling expenses for casual court attendants	\$150 00	C 3 F-a
Miscellaneous expenses	150 00	C 3 F-t
Repairs to equipment	100 00	C 3 F-q
	<hr/>	
		400 00
		<hr/>
		\$365,220 00
		<hr/> <hr/>

C 4. Court of Errors and Appeals.**Salaries:**

Compensation of judges of the Court of Errors and Appeals, at \$40.00 per diem	\$51,000 00	C 4 B
Compensation of officers	3,500 00	C 4 D
	<hr/>	
		\$54,500 00

Services Other Than Personal:

Printed or typewritten copies of draft of opinions under the direction of the presiding judge ...	\$1,500 00	C 4 F-ea
---	------------	----------

Binding State cases, briefs, et cetera, and printing list of causes, et cetera ...	1,500 00	<i>Account No.</i> C 4 F-eb
	<hr/>	
	3,000 00	
	<hr/>	
	\$57,500 00	
	<hr/> <hr/>	

C 5. Court of Pardons.

Salaries:

Compensation of judges of the Court of Pardons, at \$20.00 per diem	\$2,500 00	C 5 B
Compensation of clerk and stenog- rapher	2,790 00	C 5 D
	<hr/>	
	\$5,290 00	

Materials and Supplies:

Stationery and office supplies	300 00	C 5 E-g
--------------------------------------	--------	---------

Services Other Than Personal:

Miscellaneous expenses	75 00	C 5 F-t
	<hr/>	
	\$5,665 00	
	<hr/> <hr/>	

C 6. Commission on Statutes.

Expenses of the commission ap-
pointed pursuant to the provisions
of chapter 91, laws of 1939.

Salaries	\$25,680 00	C 6 D
Materials and supplies	1,000 00	C 6 E-o
Services other than personal	900 00	C 6 F-t
	<hr/>	
	\$27,580 00	
	<hr/> <hr/>	

C 7. Law and Equity Reports.

		<i>Account No.</i>
Salaries:		
Chancery reporter ..	\$500 00	C 7 D-a
Supreme Court re- porter	500 00	C 7 D-b
	<u> </u>	
	\$1,000 00	
	<u> </u>	

C 8. Stenographic Reporters.

For amount to be refunded to various counties in this State for salaries of stenographic reporters appointed by the justices of the Supreme Court, pursuant to R. S. 2:16-21 ..

\$56,000 00	C 8 I
<u> </u>	

C 9. Supreme Court.

Salaries:		
Chief Justice	\$19,000 00	C 9 A
Associate justices ...	144,000 00	C 9 B
Circuit court judges ..	224,000 00	C 9 C
Salaries of secretaries to justices of the Supreme Court, pur- suant to R. S. 2:4-13	18,000 00	C 9 D-a
Compensation for as- sistants	2,000 00	C 9 D-b
Board of Bar Examin- ers, salary of mem- bers, secretary, as- sistant secretary and messenger	17,150 00	C 9 D-c
	<u> </u>	
	\$424,150 00	

Materials and Supplies:

Office equipment re- placement	\$270 00	C 9 E-i
Stationery and office supplies	350 00	C 9 E-g
Educational and li- brary supplies	3,000 00	C 9 E-k
	<u> </u>	
	3,620 00	

Services Other Than Personal:

Expenses of Board of Bar Examiners incurred by court order, including disbarment proceedings	2,500 00	<i>Account No.</i> C 9 F-u
	<hr/>	
	\$430,270 00	
	<hr/> <hr/>	

D. REGULATIVE.**D 1. Board of Commerce and Navigation.****Salaries:**

Director	\$4,500 00	D 1 A
Assistant chief engineer	2,000 00	D 1 D-a
Consulting engineer ..	1,800 00	D 1 D-b
Assistant secretary..	3,480 00	D 1 D-c
Office engineer	4,200 00	D 1 D-d
Hydrographic engineer	3,900 00	D 1 D-e
Senior hydrographic engineer	3,900 00	D 1 D-f
Other assistants, public hearings, searches, surveys, witnesses on trespasses, et cetera	25,560 00	D 1 D-g
	<hr/>	
	\$49,340 00	

Materials and Supplies:

Stationery and office supplies	\$2,500 00	D 1 E-g
Office equipment replacement	1,500 00	D 1 E-i
Heat, light, power, water, gas and electricity	2,800 00	D 1 E-c
Household supplies ..	600 00	D 1 E-d
Drugs, medicine and chemicals	400 00	D 1 E-f

Photography, blue- printing and draft- ing supplies	1,400 00	<i>Account No.</i> D 1 E-ja
Engineering supplies	1,250 00	D 1 E-jb
Motor boat transpor- tation and supplies	6,600 00	D 1 E-n
Motor vehicle trans- portation and sup- plies	2,500 00	D 1 E-h
Clothing	400 00	D 1 E-b
	<hr/>	
	19,950 00	
Current repairs	9,950 00	D 1 G
Services Other Than Personal:		
Traveling expenses ..	\$3,600 00	D 1 F-a
Rents	9,020 00	D 1 F-g
Insurance (other than fire)	4,500 00	D 1 F-c
Expenses in connec- tion with riparian surveys and study and plans for beach protection measures	1,400 00	D 1 F-k
Miscellaneous ex- penses	1,000 00	D 1 F-t
Advertising for bids and legal notices ..	1,600 00	D 1 F-f
Subscriptions and membership fees ..	135 00	D 1 F-j
	<hr/>	
	21,255 00	
Expenditures for Waterways:		
Lights and buoys	\$2,950 00	D 1 H-d
Maintenance naviga- tion lights, Cape M a y - M a n a s q u a n River	2,990 00	D 1 I-a
Maintenance Newark Bay lights and re- placements	350 00	D 1 I-b
	<hr/>	
	6,290 00	

Unclassified:

Expenses of New Jersey Council to advertise the advantages of the State, pursuant to Title 52, Chapter 9-C of the R. S.	50,000 00	<i>Account No.</i> D 1 J
Appropriation for administration expenses receivable from School Fund pursuant to R. S. 18:10-7, \$50,000.00.		

\$156,785 00

D 2. Commission on Interstate Co-operation.

Expenses incurred by the commission appointed pursuant to Joint Resolution No. 3, approved March 12, 1935	\$13,500 00	D 2 I
---	-------------	-------

D 3. Board of Public Utility Commissioners.**Salaries:**

Members of the board	\$36,000 00	D 3 B
Counsel (2)	15,000 00	D 3 D-a
Assistant counsel	3,500 00	D 3 D-b
Secretary	7,000 00	D 3 D-c
Chief engineer, Bureau of Utilities	8,000 00	D 3 D-d
Principal engineer, bridges and grade crossings	6,000 00	D 3 D-e
Deputy chief engineer, Division of Rates and Research	6,000 00	D 3 D-f
Engineers, inspectors, clerks, stenographers and other employees	160,981 00	D 3 D-g
Reporting hearings ..	7,000 00	D 3 D-h
	<hr/> \$249,481 00	

Materials and Supplies:

Stationery and office supplies	\$3,500 00	<i>Account No.</i> D 3 E-g
Office equipment re- placement	1,000 00	D 3 E-i
	<hr/>	4,500 00

Services Other Than Personal:

Traveling expenses ..	\$8,000 00	D 3 F-a
Miscellaneous ex- penses	500 00	D 3 F-t
Printing	3,500 00	D 3 F-e
	<hr/>	12,000 00
		<hr/>
		<u>\$265,981 00</u>

D 4. Board of Shell Fisheries.**Salaries:**

Director	\$4,000 00	D 4 A
Chiefs of bureaus ...	5,100 00	D 4 D-a
Captains of boats, crews, guards, clerks, et cetera ...	47,700 00	D 4 D-b
Special guard service.	500 00	D 4 D-c
	<hr/>	\$57,300 00

Materials and Supplies:

Fuel and power	\$4,500 00	D 4 E-c
Stationery and office supplies	200 00	D 4 E-g
Office Equipment Re- placement	200 00	D 4 E-i
License plates	300 00	D 4 E-n
	<hr/>	5,200 00
Current repairs	5,000 00	D 4 G

Services Other Than Personal:		<i>Account No.</i>
Traveling expenses ..	\$2,500 00	D 4 F-a
Insurance (other than fire)	660 00	D 4 F-c
Surveying and map- ping	1,500 00	D 4 F-k
Rent of offices and boats	1,260 00	D 4 F-g
Services on e small guard boat (Dela- ware bay)	1,200 00	D 4 F-u
Telephone and tele- graph	150 00	D 4 F-h
Miscellaneous ex- penses	500 00	D 4 F-t
	<hr/>	
	7,770 00	

Additions and Improvements:

Shelling beds, dyna- miting and netting drumfish, Depart- ment of Maurice river cove and Atlantic coast and control of oyster drill in Cumberland and Cape May counties	\$19,000 00	D 4 H-da
Staking State's na- tural spawning oyster beds	500 00	D 4 H-db
Purchase of guard boat for Atlantic county	1,000 00	D 4 H-a
	<hr/>	
	20,500 00	
	<hr/>	
	\$95,770 00	
	<hr/> <hr/>	

Services Other Than Personal:		<i>Account No.</i>
Traveling expenses ..	\$56,000 00	D 6 F-a
Freight, express and cartage	350 00	D 6 F-i
Subscriptions	475 00	D 6 F-ja
Compiling and printing valuations	450 00	D 6 F-ea
Rents	9,000 00	D 6 F-g
Printing	14,000 00	D 6 F-eb
Miscellaneous expenses	800 00	D 6 F-t
Membership fee, National Association of State Banks and convention expenses	185 00	D 6 F-jb
Insurance (other than fire)	225 00	D 6 F-c
	81,485 00	
	\$713,625 00	

D 7. Department of Conservation and Development.

Administration.

Salaries:

State Forester and Director	\$6,000 00	D 7 A
Other employees	12,420 00	D 7 D-a
	\$18,420 00	
Materials and supplies	1,500 00	D 7 E-oa
Current repairs	50 00	D 7 G-a
Services other than personal	320 00	D 7 F-va

Geologic and Topographic Surveys.

Salaries:

State Geologist	\$4,800 00	D 7 D-b
Topographic engineer	3,600 00	D 7 D-c
Other employees	2,040 00	D 7 D-d
	10,440 00	

		<i>Account No.</i>
Materials and supplies.....	100 00	D 7 E-ob
Current repairs	50 00	D 7 G-b
Services other than personal	3,555 00	D 7 F-vb

State Museum.

Salaries:

Curator	\$3,600 00	D 7 D-e
Museum preparator .	3,000 00	D 7 D-f
Other employees	24,940 00	D 7 D-g
	31,540 00	
Materials and supplies	6,500 00	D 7 E-oc
Current repairs	1,000 00	D 7 G-c
Services other than personal	2,750 00	D 7 F-vc
Additions and improvements	600 00	D 7 H-c

Forestry Investigation, Advice and Assistance.

Salaries:

Land agent	\$4,500 00	D 7 D-h
Senior assistant for- ester	3,000 00	D 7 D-i
Other employees	15,130 00	D 7 D-j
	22,630 00	
Materials and supplies	500 00	D 7 E-od
Current repairs	250 00	D 7 G-d
Services other than personal	5,000 00	D 7 F-vd

State Forests.

Salaries:

Senior assistant for- ester	\$3,000 00	D 7 D-k
Other employees	36,005 00	D 7 D-l
Labor (per diem) ...	4,500 00	D 7 D-m
	43,505 00	
Materials and supplies	4,550 00	D 7 E-oe
Current repairs	5,500 00	D 7 G-e
Services other than personal	3,600 00	D 7 F-ve

Extraordinary Expenditures:

Tax lieu on State forests, et cetera.	8,587 00	D 7 F-vf
---------------------------------------	----------	----------

State Forest Nurseries and Reforestation.

Salaries:

		<i>Account No.</i>
Senior assistant forester	\$3,000 00	D 7 D-n
Other employees	11,490 00	D 7 D-o
Labor (per diem) ...	4,000 00	D 7 D-p
	<hr/>	
	18,490 00	
Materials and supplies	2,500 00	D 7 E-of
Current repairs	600 00	D 7 G-f
Services other than personal	1,000 00	D 7 F-vg

State Parks.

Salaries:

Supervisors, guards and other employees	\$62,020 00	D 7 D-q
Labor	1,020 00	D 7 D-r
	<hr/>	
	63,040 00	
Materials and supplies	7,500 00	D 7 E-og
Current repairs	8,000 00	D 7 G-g
Services other than personal	1,800 00	D 7 F-vh

All unexpended balances in the accounts derived from revenues received from all State parks under the jurisdiction of the Department of Conservation and Development; and also the revenues received from the same parks are hereby appropriated for the use of the Department of Conservation and Development for the operation, maintenance and development of said parks:

D 7 I

Preventing and Extinguishing Forest Fires.

Salaries:		<i>Account No.</i>
State fire warden	\$4,000 00	D 7 D-s
Other employees	105,410 00	D 7 D-t
Labor (per diem) on fire lines	2,490 00	D 7 D-u
	<hr/>	
	111,900 00	
Materials and supplies	4,000 00	D 7 E-oh
Current repairs	2,500 00	D 7 G-h
Services other than personal	13,000 00	D 7 F-vi
Extraordinary Expenses:		
Fire fighting costs	15,000 00	D 7 J

Delaware and Raritan Canal.

Maintenance of the Delaware and Raritan Canal, all receipts derived from the operation thereof; and also the following appropriation ..	17,000 00	D 7 K
	<hr/>	
	\$437,277 00	
	<hr/> <hr/>	

D 8. Department of Health.

Salaries:		
Director	\$6,760 00	D 8 A
Director, Federal Su- pervision	1,240 00	D 8 D-a
Chief, Bureau of Ad- ministration	4,200 00	D 8 D-b
Registrar, Bureau of Vital Statistics	4,200 00	D 8 D-c
Chief, Bureau of Local Health Administra- tion	4,860 00	D 8 D-d
Chief, Bureau of Food and Drugs	4,860 00	D 8 D-e
Chief, Bureau of Pub- lic Health Educa- tion	4,000 00	D 8 D-f

		<i>Account No.</i>
Chief, Bureau of Sanitary Engineering ..	5,560 00	D 8 D-g
Chief, Bureau of Chemistry	4,860 00	D 8 D-h
Chief, Bureau of Bacteriology	4,860 00	D 8 D-i
Senior Sanitary Engineer, Bureau of Engineering	3,600 00	D 8 D-j
Veterinarian	3,900 00	D 8 D-k
District Health Officers (5)	16,680 00	D 8 D-l
Assistant Epidemiologists, Local Health Administration (2)	7,920 00	D 8 D-m
Consultant — Dental Health Program ..	4,000 00	D 8 D-n
Consultant—Negro Health Program ..	3,000 00	D 8 D-o
Engineers, inspectors, investigators, laboratory and other employees, present, \$175,240.00; new, \$8,680.00	183,920 00	D 8 D-p
	<hr/>	\$268,420 00

Materials and Supplies:

Stationery and office supplies	\$3,000 00	D 8 E-ga
Engineering supplies.	770 00	D 8 E-j
Vehicular transportation supplies	2,750 00	D 8 E-h
Laboratory supplies .	10,000 00	D 8 E-fa
Laboratory receipts .	500 00	D 8 E-fb
Other materials and supplies	250 00	D 8 E-oa
Dental health education materials	500 00	D 8 E-k
Office equipment replacement	650 00	D 8 E-i
	<hr/>	18,420 00

Services Other Than Personal:

		<i>Account No.</i>
Printing	\$11,000 00	D 8 F-ea
Traveling expenses ..	16,000 00	D 8 F-a
Miscellaneous ex- penses	2,500 00	D 8 F-t
Rental of tabulation machines	1,296 00	D 8 F-ga
Binding volumes of birth, marriage and death certificates .	750 00	D 8 F-eb
Court expenses	500 00	D 8 F-l
Rents	1,680 00	D 8 F-gb
Maintenance of trailer	280 00	D 8 F-q
Insurance (other than fire)	640 00	D 8 F-c
	<hr/>	
	34,646 00	

Extraordinary Expenditures:

The unexpended balance, June 30, 1942, of the amount appropriated for Pneumonia serum, pursuant to chapter 204, laws of 1940, is hereby reappropriated.		D 8 E-fc
Biological assays	1,000 00	D 8 E-fd

Bureau of Venereal Disease Control.**Salaries:**

Chief	\$3,600 00	D 8 D-q
Consultant	3,600 00	D 8 D-r
Other employees	10,320 00	D 8 D-s
	<hr/>	
	\$17,520 00	

Materials and Supplies:

Drugs and clinic sup- plies	\$5,000 00	D 8 E-fe
Stationery and office supplies	300 00	D 8 E-gb
	<hr/>	
	\$5,300 00	

Services Other Than Personal:

Traveling expenses, printing and other miscellaneous	\$2,500 00	<i>Account No.</i> D 8 F-va
	<hr/>	25,320 00

Sanitary Shell Fish Control Bureau.

Salaries	\$14,940 00	D 8 D-t
Materials and supplies .	850 00	D 8 E-ob
Services other than per- sonal	6,000 00	D 8 F-vb
	<hr/>	21,790 00

Ice Cream License Bureau.

Salaries	\$2,100 00	D 8 D-u
Materials and supplies .	100 00	D 8 E-oc
Services other than per- sonal	275 00	D 8 F-vc
	<hr/>	2,475 00

Milk Plant License Bureau.

Salaries	\$8,580 00	D 8 D-v
Materials and supplies .	535 00	D 8 E-od
Services other than per- sonal	2,000 00	D 8 F-vd
	<hr/>	11,115 00

Toxoid Distribution Bureau.

Salaries	\$1,620 00	D 8 D-w
Materials and supplies .	9,860 00	D 8 E-oe
Services other than per- sonal	300 00	D 8 F-ve
	<hr/>	11,780 00

Maternal and Child Health Bureau.

		<i>Account No.</i>
Salaries	\$85,077 12	D 8 D-x
Materials and supplies .	2,107 50	D 8 E-of
Services other than personal	16,195 50	D 8 F-vf
	<hr/>	
	103,380 12	
	<hr/>	
	\$498,346 12	
	<hr/> <hr/>	

D 9. Department of Labor.

Salaries:

Commissioner of Labor	\$6,000 00	D 9 A
Deputy Commissioners Workmen's Compensation, present, \$59,500.00; new, \$17,000.00	76,500 00	D 9 D-a
Deputy Commissioners of Labor and Chiefs of bureaus..	25,200 00	D 9 D-b
Supervisor, informal hearings	5,300 00	D 9 D-c
Examiners, inspectors, clerks and other employees, present, \$228,646.00; new, \$1,920.00	230,566 00	D 9 D-d
Bureau for Women and Children	3,720 00	D 9 D-e
Wage Collection Division	7,920 00	D 9 D-f
Minimum Wage Division	47,260 00	D 9 D-g
Child Labor Bureau .	22,440 00	D 9 D-h
	<hr/>	
	\$424,906 00	

Materials and Supplies:

		<i>Account No.</i>
Stationery and office supplies	\$6,000 00	D 9 E-g
Office equipment	3,000 00	D 9 E-i
Coal, Jersey City, Trenton and Paterson	1,200 00	D 9 E-ca
Vehicular transportation supplies	380 00	D 9 E-h
Lighting, power and water service	1,500 00	D 9 E-cb
	<u>12,080 00</u>	
Current repairs	200 00	D 9 G

Services Other Than Personal:

Traveling expenses (Inspectors, Referees, Adjusters, etc.)	\$20,000 00	D 9 F-aa
Rent, Jersey City, Paterson or other cities	10,800 00	D 9 F-g
Miscellaneous expenses	1,511 25	D 9 F-t
Printing	4,000 00	D 9 F-ea
Expenses for Industrial Safety Campaign	800 00	D 9 F-u
Printing (Child Labor Bureau)	1,000 00	D 9 F-cb
Traveling expenses (Child Labor Bureau)	2,500 00	D 9 F-ab
	<u>40,611 25</u>	
	<u>\$477,797 25</u>	

D 10. Department of Weights and Measures.

		<i>Account No.</i>
Salaries:		
Superintendent	\$5,000 00	D 10 A
Assistant Superintendent, Chief Clerk	4,000 00	D 10 D-a
Compensation for assistants	15,540 00	D 10 D-b
Inspectors and one clerk, Coal Statute Enforcement	17,620 00	D 10 D-c
	<hr/>	\$42,160 00
Materials and Supplies:		
Vehicular transportation supplies	\$1,500 00	D 10 E-h
Metal seals	250 00	D 10 E-na
Stationery and office supplies	500 00	D 10 E-g
Other materials and supplies	100 00	D 10 E-o
Equipment and supplies, Coal Statute Enforcement	3,600 00	D 10 E-nb
Office equipment replacement	100 00	D 10 E-i
	<hr/>	6,050 00
Current repairs		50 00 D 10 G
Services Other Than Personal:		
Traveling expenses, including samples purchased and Coal Statute Enforcement	\$8,000 00	D 10 F-a
Insurance (other than fire)	600 00	D 10 F-c
Miscellaneous expenses	400 00	D 10 F-t
Printing and binding.	600 00	D 10 F-e
	<hr/>	9,600 00

Additions and Improvements:

		<i>Account No.</i>
Camera for Photo- graphing Evidence.	\$100 00	D 10 H-d
Glass cases for stor- ing standards and Equipment	100 00	D 10 H-b
	<hr/>	
	200 00	
	<hr/>	
	\$58,060 00	
	<hr/> <hr/>	

D 11. Health Officers, Port of Perth Amboy.

Health officer of the Port of Perth Amboy, for salary, pursuant to R. S. 26:4-111	\$1,000 00	D 11 A
Deputy health officer	250 00	D 11 D
	<hr/>	
	\$1,250 00	
	<hr/> <hr/>	

D 12. State Board of Tax Appeals.**Salaries:**

President	\$6,500 00	D 12 A
Members of board ...	27,000 00	D 12 B
Secretary	6,500 00	D 12 D-a
Compensation for other assistants ...	39,500 00	D 12 D-b
	<hr/>	
	\$79,500 00	

Materials and Supplies:

Stationery and office supplies	\$2,500 00	D 12 E-g
Vehicular transporta- tion supplies	250 00	D 12 E-h
Office equipment re- placement	500 00	D 12 E-i
	<hr/>	
	3,250 00	

Services Other Than Personal:		<i>Account No.</i>
Traveling expenses ..	\$3,500 00	D 12 F-a
Miscellaneous ex- penses	500 00	D 12 F-t
Printing "Report of Cases"	400 00	D 12 F-e
	<hr/>	
	4,400 00	
	<hr/>	
	\$87,150 00	
	<hr/> <hr/>	

D 13. State Board of Tenement House Supervision.

Salaries:

Secretary and execu- tive officer	\$7,000 00	D 13 A
Compensation for as- sistants and other employees	89,060 00	D 13 D
	<hr/>	
	\$96,060 00	

Materials and Supplies:

Stationery and office supplies	\$300 00	D 13 E-g
Other materials and supplies	300 00	D 13 E-o
Vehicular transporta- tion supplies	1,000 00	D 13 E-h
Office equipment re- placement	150 00	D 13 E-i
	<hr/>	
	1,750 00	

Services Other Than Personal:

Traveling expenses ..	\$7,000 00	D 13 F-a
Miscellaneous ex- penses	300 00	D 13 F-t
Garage rent	216 00	D 13 F-g

Printing, binding, photographing and blueprinting	200 00	<i>Account No.</i> D 13 F-e
Insurance (other than fire)	150 00	D 13 F-c
	<hr/>	
	7,866 00	
	<hr/>	
	\$105,676 00	
	<hr/> <hr/>	

D 14. Real Estate Commission.

Salaries:

Commissioners (5) ..	\$17,000 00	D 14 B
Secretary	5,000 00	D 14 A
Chief examiner and investigator	4,500 00	D 14 D-a
Other employees	23,460 00	D 14 D-b
	<hr/>	
	\$49,960 00	

Materials and Supplies:

Stationery and office supplies	\$300 00	D 14 E-g
Office equipment replacement	963 00	D 14 E-i
	<hr/>	
	1,263 00	

Services Other Than Personal:

Traveling expenses ..	\$2,500 00	D 14 F-a
Printing, binding, photographing and blueprinting	900 00	D 14 F-e
Miscellaneous expenses	400 00	D 14 F-t
Subpoena and class room fees	500 00	D 14 F-u
Insurance (other than fire) and bond premiums	209 00	D 14 F-c
	<hr/>	
	4,509 00	
	<hr/>	
	\$55,732 00	
	<hr/> <hr/>	

D 15. Department of State Police.

Salaries:

		<i>Account No.</i>
Colonel and superintendent	\$9,000 00	D 15 A
Major and deputy superintendent	5,000 00	D 15 D-a
Captains	15,360 00	D 15 D-b
Lieutenants	25,920 00	D 15 D-c
Noncommissioned officers, troopers, et cetera	739,490 85	D 15 D-d
Medical and surgical services	7,500 00	D 15 D-e
	<hr/>	
	\$802,270 85	

Materials and Supplies:

Food	\$27,000 00	D 15 E-a
Clothing	25,000 00	D 15 E-b
Heat, light, power, water, gas and electricity	9,600 00	D 15 E-c
Vehicular transportation supplies	60,000 00	D 15 E-h
Household and organization supplies	8,250 00	D 15 E-d
Medical, surgical and laboratory supplies.	2,000 00	D 15 E-f
Stationery and office supplies	4,750 00	D 15 E-ga
Office equipment replacement	1,000 00	D 15 E-i
Replacement of motor vehicles	60,000 00	D 15 E-m
	<hr/>	
	197,600 00	
Current repairs	6,000 00	D 15 G

Services Other Than Personal:		<i>Account No.</i>
Traveling expenses ..	\$1,400 00	D 15 F-a
Rents	16,500 00	D 15 F-ga
Telephone and tele- graph	10,500 00	D 15 F-h
Insurance (other than fire)	6,500 00	D 15 F-c
Freight, express and cartage	50 00	D 15 F-i
Emergency fund, all bills to be approved by the State House Commission	1,000 00	D 15 F-v
Food and lodging ...	153,000 00	D 15 F-u
	<hr/>	
	188,950 00	

Additions and Improvements:		
Office equipment	\$180 00	D 15 H-ba
Household equipment	280 00	D 15 H-g
	<hr/>	
	460 00	

System of Communication.

Salaries:		
Supervisors	\$6,480 00	D 15 D-f
Assistant supervisors	27,500 00	D 15 D-g
Operators	23,940 00	D 15 D-h
	<hr/>	
	57,920 00	

Materials and Supplies:		
Stationery and office supplies	\$2,500 00	D 15 E-gb
Parts and tools	5,000 00	D 15 E-o
	<hr/>	
	7,500 00	

Services Other Than Personal:		
Rental of communications instru- ments and power	52,500 00	D 15 F-gb

Additions and Improvements:		
Purchase of communications equip- ment	15,000 00	D 15 H-da

Bureau of Identification.

		<i>Account No.</i>
Salaries:		
Supervisor	\$3,840 00	D 15 D-i
Other officers and employees, present, \$49,400.00; new, \$6,240.00	55,640 00	D 15 D-j
	<u>59,480 00</u>	
Materials and Supplies:		
Stationery and office supplies	\$4,000 00	D 15 E-gc
Photographic, blue-printing and drafting supplies	3,000 00	D 15 E-j
	<u>7,000 00</u>	
Services Other Than Personal:		
Rental, fingerprint sorter	2,832 00	D 15 F-gc
Additions and Improvements:		
Office equipment	\$4,000 00	D 15 H-bb
Scientific equipment .	2,450 00	D 15 H-db
	<u>6,450 00</u>	
	<u>\$1,403,962 85</u>	
Payment of fifty per centum (50%) of this appropriation to be made from the State Highway Fund..	701,981 42	
	<u>\$701,981 43</u>	

D 16. State Water Policy Commission.

Salaries:		<i>Account' No.</i>
Engineer in charge .	\$5,760 00	D 16 A
Assistant division engineer	4,500 00	D 16 D-a
Assistant engineer ..	3,600 00	D 16 D-b
United States Geological Survey employees (1/2 salary)	10,480 00	D 16 D-c
Other employees ...	10,500 00	D 16 D-d
	<hr style="width: 100%; border: 0.5px solid black;"/> \$34,840 00	
 Materials and Supplies:		
Stationery and office supplies	\$400 00	D 16 E-g
Engineering supplies.	350 00	D 16 E-j
Vehicular transportation supplies	1,200 00	D 16 E-h
Office equipment replacement	250 00	D 16 E-i
	<hr style="width: 100%; border: 0.5px solid black;"/> 2,200 00	
Current Repairs	2,000 00	D 16 G
 Services Other Than Personal:		
Traveling expenses ..	\$2,000 00	D 16 F-a
Telephone and telegraph	300 00	D 16 F-h
Postage	300 00	D 16 F-d
Printing, binding, photographing and blueprinting	350 00	D 16 F-e
Rents	5,225 00	D 16 F-g
Miscellaneous expenses	300 00	D 16 F-t
	<hr style="width: 100%; border: 0.5px solid black;"/> 8,475 00	
	<hr style="width: 100%; border: 0.5px solid black;"/> <u><u>\$47,515 00</u></u>	

D 17. State Tax Department.

Commissioner's Office.

		<i>Account No.</i>
Salaries:		
Secretary	\$2,400 00	D 17 D-a
Other employees	1,380 00	D 17 D-b
	<hr/>	
	\$3,780 00	
Materials and supplies .	250 00	D 17 E-oa
Services other than personal	900 00	D 17 F-va
	<hr/>	
		\$4,930 00

Administrative Service.

Salaries:		
Clerical employees ..	\$15,120 00	D 17 D-c
Materials and supplies.	150 00	D 17 E-ob
Services other than personal	7,060 00	D 17 F-vb
	<hr/>	
		22,330 00

Corporation Tax Division.

Salaries:		
Chief clerk	\$3,600 00	D 17 D-d
Principal corporation tax clerk	3,360 00	D 17 D-e
Clerical employees ..	39,960 00	D 17 D-f
	<hr/>	
	\$46,920 00	
Materials and supplies .	1,900 00	D 17 E-oc
Services other than personal	3,525 00	D 17 F-vc
	<hr/>	
		52,345 00

Unclassified:

Upon approval of the State Tax Commissioner, the Comptroller of the Treasury is hereby author-

ized and directed to allow and certify to the State Treasurer for payment any duplicate payment of tax, or any amount legally adjudged to be an overpayment of franchise taxes and interest thereon by any so-called miscellaneous corporation, provided any such taxes shall not have been assessed or fixed earlier than two years prior to the date of instituting proceedings to recover such overpayment. The State Treasurer is hereby authorized and directed to pay warrants issued therefor by the Comptroller.

Account No.
D 17 J

Engineering and Railroad Tax Division.

Salaries:

Chief engineer	\$11,000 00	D 17 D-g
Field Engineer—railroad tax	4,980 00	D 17 D-h
Office engineer—railroad tax	4,980 00	D 17 D-i
Other employees, present, \$37,440.00; new, \$8,640.00	46,080 00	D 17 D-j
	<hr/>	
	\$67,040 00	

		<i>Account No.</i>
Materials and supplies .	3,450 00	D 17 E-od
Services other than personal	1,700 00	D 17 F-vd
	<hr/>	
	72,190 00	

Local Tax Division.

Salaries:		
Field secretary	\$4,300 00	D 17 D-k
Other employees	4,140 00	D 17 D-l
	<hr/>	
	\$8,440 00	
Materials and supplies .	100 00	D 17 E-oe
Services other than personal	200 00	D 17 F-ve
	<hr/>	
	8,740 00	

Transfer Inheritance Tax Division.

Salaries:		
State Supervisor—inheritance tax	\$11,500 00	D 17 A
Head inheritance tax clerks (2)	13,000 00	D 17 D-m
District supervisors .	9,120 00	D 17 D-n
Other employees	186,760 00	D 17 D-o
	<hr/>	
	\$220,380 00	
Materials and supplies .	7,000 00	D 17 E-of
Services other than personal	2,650 00	D 17 F-vf
Additions and improvements	1,000 00	D 17 H-b

Unclassified:

Upon approval of the State Tax Commissioner, the Comptroller of the Treasury is hereby authorized and it shall be

his duty to withdraw from the State Fund such amounts as shall be required to carry out the provisions of R. S. 54:33-10, payment of five per centum (5%) of tax collected to counties, and to refund and pay such claims as may be necessary and the State Treasurer shall pay same upon the warrants of said Comptroller, and there is hereby appropriated the amount necessary therefor, approximating

300,000 00

Account No.
D 17 I

531,030 00

Public Utility Tax Division.

Salaries:

Chief \$3,660 00
Other employees 10,140 00

D 17 D-p
D 17 D-q

\$13,800 00

Materials and supplies . 1,300 00
Services other than personal 1,450 00

D 17 E-og
D 17 F-vg

16,550 00

16,550 00

Beverage Tax Division.

Salaries:		<i>Account No.</i>
Director	\$6,000 00	D 17 D-r
Other employees	205,440 00	D 17 D-s
	<hr/>	
	\$211,440 00	
Materials and supplies .	7,150 00	D 17 E-oh
Services other than personal	18,500 00	D 17 F-vh
	<hr/>	
	237,090 00	

Unclassified:

Upon approval of the State Tax Commissioner, the Comptroller of the Treasury is hereby authorized and it shall be his duty to withdraw from the State fund, moneys to refund and pay such claims for refund as may be necessary under the various provisions of Title 54 of the Revised Statutes and any statutes superseded thereby, and the State Treasurer shall pay same upon warrant of the said Comptroller.

D 17 R

\$945,205 00

D 18. Department of Aviation.

Expenses incurred by the Department of Aviation, established pursuant to chapter 1 of Title 6 of the R. S.

Salaries:		<i>Account No.</i>
Director of Aviation	\$6,000 00	D 18 A
Compensation of other employees	7,500 00	D 18 D
	<u>\$13,500 00</u>	
Materials and Supplies:		
Stationery and office supplies and equip- ment	\$300 00	D 18 E-g
Maintenance of air- craft	750 00	D 18 E-n
Other materials and supplies	200 00	D 18 E-o
	<u>1,250 00</u>	
Services Other Than Personal:		
Traveling expenses	\$2,500 00	D 18 F-a
Insurance (other than fire)	695 00	D 18 F-c
Miscellaneous ex- penses	400 00	D 18 F-t
	<u>3,595 00</u>	
	<u><u>\$18,345 00</u></u>	

D 19. Department of Alcoholic Beverage Control.

Salaries:		
Commissioner	\$16,500 00	D 19 A
Deputy commissioners	12,000 00	D 19 D-a
Attorney in chief	5,000 00	D 19 D-b
Counsel in chief	6,000 00	D 19 D-c
Chief inspector	3,500 00	D 19 D-d
Senior inspectors	24,480 00	D 19 D-e
Inspectors	15,400 00	D 19 D-f
Investigators	183,580 00	D 19 D-g
Confidential secretary	3,000 00	D 19 D-h
Secretary to commis- sioner	1,980 00	D 19 D-i

Compensation for other assistants and clerical services ...	77,900 00	<i>Account No.</i> D 19 D-j
Compensation Award, Mrs. Wm. C. Carr..	104 24	D 19 I
	<u> </u>	\$349,444 24
Materials and Supplies:		
Stationery and office supplies	\$5,000 00	D 19 E-g
Other materials and supplies	1,000 00	D 19 E-o
Office, ordinance and seizure equipment..	3,000 00	D 19 E-i
	<u> </u>	9,000 00.
Services Other Than Personal:		
Traveling expenses ..	\$55,000 00	D 19 F-a
Printing, binding, pho- tographing and blueprinting	6,000 00	D 19 F-e
Insurance (other than fire)	1,000 00	D 19 F-c
Miscellaneous ex- penses	4,800 00	D 19 F-t
Seizure expenses	4,500 00	D 19 F-u
	<u> </u>	71,300 00
		<u> </u>
		<u> </u>
		\$429,744 24

D 20. State Board of Beauty Culture Control.

Salaries:		
Commissioners	\$10,000 00	D 20 B
Secretary	3,000 00	D 20 A
Inspectors and other employees	16,600 00	D 20 D
	<u> </u>	\$29,600 00

Materials and Supplies:

		<i>Account No.</i>
Vehicular transportation supplies	\$1,000 00	D 20 E-h
Stationery and office supplies	300 00	D 20 E-g
Office equipment replacement	50 00	D 20 E-i
	<hr/>	
	1,350 00	

Services Other Than Personal:

Traveling expenses ..	\$1,800 00	D 20 F-a
Rents	2,712 00	D 20 F-g
Insurance (other than fire)	200 00	D 20 F-c
Miscellaneous expenses	200 00	D 20 F-t
Printing, binding, photographing and blueprinting	1,000 00	D 20 F-e
	<hr/>	
	5,912 00	
	<hr/>	
	\$36,862 00	
	<hr/> <hr/>	

D 21. Board of Barber Examiners.**Salaries:**

Officers and employees	\$16,650 00	D 21 D
------------------------------	-------------	--------

Materials and Supplies:

Stationery and office supplies	400 00	D 21 E-g
--------------------------------------	--------	----------

Services Other Than Personal:

Traveling expenses ..	\$3,000 00	D 21 F-a
Miscellaneous expenses	1,180 00	D 21 F-t
	<hr/>	
	4,180 00	
	<hr/>	
	\$21,230 00	
	<hr/> <hr/>	

D 22. Interstate Sanitation Commission.

Expenses incurred by the commission appointed pursuant to chapter 321, laws of 1935	\$15,000 00	<i>Account No.</i> D 22 I
---	-------------	------------------------------

D 23. Racing Commission.

Salaries:

Counsel	\$5,000 00	D 23 D-a
Secretary	4,000 00	D 23 D-b
Other employees ...	15,000 00	D 23 D-c
	<hr/>	
	\$24,000 00	

Materials and Supplies:

Vehicular transporta- tion supplies	\$300 00	D 23 E-h
Stationery and office supplies	1,000 00	D 23 E-g
	<hr/>	
	1,300 00	

Services Other Than Personal:

Traveling expenses ..	\$2,000 00	D 23 F-a
Rents	1,584 00	D 23 F-g
Insurance (other than fire)	375 00	D 23 F-c
Subscriptions and membership fees ..	205 00	D 23 F-j
Printing	1,000 00	D 23 F-e
Miscellaneous ex- penses	500 00	D 23 F-t
	<hr/>	
	5,664 00	

Additions and Improvements:

Veterinarian equipment	200 00	D 23 H-d
	<hr/>	
	\$31,164 00	

E. EDUCATIONAL.

E 1. State Board of Regents.
(State Agricultural College).

		<i>Account No.</i>
Rutgers University (State Agricultural Collegé)	\$800,000 00	E 1 I
Purchase of scholarships at Rutgers University, including the New Jersey College for Women	200,000 00	E 1 J
College for Women	366,500 00	E 1 K
Newark Technical School and Newark College of Engineering	65,000 00	E 1 L

Administrative.

Board of Regents:

Salaries	\$8,160 00	E 1 D
Materials and supplies	195 00	E 1 E-o
Services other than personal	2,230 00	E 1 F-v
	<hr/>	
	10,585 00	

Payments under this account to be made pursuant to R. S. 18:10-31.

\$1,442,085 00

E 2. Commissioner of Education.

Salaries:

Commissioner	\$15,000 00	E 2 A
Five assistant commissioners	35,000 00	E 2 D-a
Director of adult education	6,000 00	E 2 D-b
Physical training superintendent	6,500 00	E 2 D-c
Physical training assistant superintendent	3,340 00	E 2 D-d
Physical training instructor	3,400 00	E 2 D-e
Inspector of buildings	4,500 00	E 2 D-f

Superintendent of industrial education .	4,050 00	<i>Account No.</i> E 2 D-g
Inspectors of accounts (2)	5,800 00	E 2 D-h
Inspectors of school accounts	3,800 00	E 2 D-i
Assistant for high school work	5,000 00	E 2 D-j
Assistant in education	3,200 00	E 2 D-k
Clerical services	41,645 00	E 2 D-l
	<hr/>	\$137,235 00
Materials and Supplies:		
Stationery and office supplies	\$14,000 00	E 2 E-g
Office equipment replacement	600 00	E 2 E-i
Vehicular transportation supplies	1,400 00	E 2 E-h
	<hr/>	16,000 00
Services Other Than Personal:		
Traveling expenses .	\$4,500 00	E 2 F-a
Postage	3,000 00	E 2 F-d
Telephone and telegraph	1,500 00	E 2 F-h
Miscellaneous expenses	650 00	E 2 F-t
Rents	17,007 00	E 2 F-g
Printing special bulletins	800 00	E 2 F-e
	<hr/>	27,457 00

The moneys in this item appropriated shall be deducted in the same manner as the moneys heretofore appropriated to the Superintendent of Public Instruction are required to be deducted pursuant to R. S. 18:10-31.

\$180,692 00

Academic Certificate Fund.

		<i>Account No.</i>
Salaries	\$4,260 00	E 2 I-a
Materials and supplies .	275 00	E 2 I-b
Services other than per- sonal	2,000 00	E 2 I-c
	<u> </u>	
	\$6,535 00	
	<u> </u>	

E 3. County Superintendents.

For county superintendents, for salaries, payments to be made pursuant to R. S. 18:10-31

\$105,000 00	E 3 B
<u> </u>	

E 4. Evening Schools for Foreign-Born Residents.

For the purpose of carrying out the provisions of article 9, chapter 15 of Title 18 of the R. S., payment to be made pursuant to R. S. 18:10-31

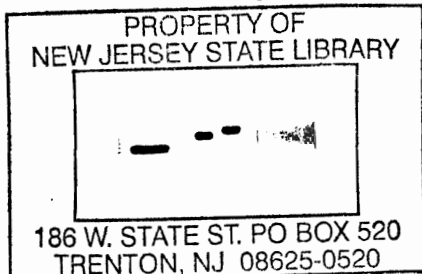
\$15,000 00	E 4 I
<u> </u>	

E 5. Industrial Education.

For payments to schools established for industrial education pursuant to R. S. 18:15-24

\$69,000 00	E 5 I
Payments to schools for manual training, pursuant to R. S., chapter 9 of Title 52	700,000 00 E 5 J
Payments under this account to be made pursuant to R. S. 18:10-31.	

<u> </u>
\$769,000 00
<u> </u>



**E 6. Manual Training and Industrial School for
Colored Youth.**

For salaries and wages, and for maintenance of the Manual Training and Industrial School for Colored Youth, on the basis of four hundred students.

		<i>Account No.</i>
Salaries and Wages:		
Principal	\$6,000 00	E 6 A
Preceptress	2,000 00	E 6 D-a
Teachers	73,120 00	E 6 D-b
Other officers and employees	39,930 00	E 6 D-c
Student labor	6,000 00	E 6 D-d
	\$127,050 00	
Materials and Supplies:		
Food	\$28,000 00	E 6 E-a
Heat, light, power, water, gas and electricity	26,000 00	E 6 E-c
Household and organization supplies	7,000 00	E 6 E-d
Farm, stable and grounds supplies ..	12,000 00	E 6 E-e
Industrial and vocational supplies	4,000 00	E 6 E-l
Educational, recreational and library supplies	4,000 00	E 6 E-k
Medical and surgical supplies	800 00	E 6 E-f
Stationery and office supplies	200 00	E 6 E-g
Vehicular transportation supplies	700 00	E 6 E-h
Other materials and supplies	100 00	E 6 E-o
Office equipment replacement	300 00	E 6 E-i
	83,100 00	
Current repairs	10,000 00	E 6 G

Services Other Than Personal:		<i>Account No.</i>
Traveling expenses..	\$1,000 00	E 6 F-a
Postage	800 00	E 6 F-d
Telephone and tele- graph	1,325 00	E 6 F-h
Entertainment ex- penses	600 00	E 6 F-n
Printing	400 00	E 6 F-e
Religious services ...	200 00	E 6 F-r
Miscellaneous ex- penses	150 00	E 6 F-t
	<hr/>	
	4,475 00	
 Additions and Improvements:		
Boiler and heat units for auto mechanics shop	\$2,100 00	E 6 H-ca
Compressor shell and condenser-refriger- ating system	1,050 00	E 6 H-ha
Overhauling fire sys- tem	1,000 00	E 6 H-cb
Power sewing ma- chines	1,200 00	E 6 H-hb
	<hr/>	
	5,350 00	
 Payments under this account to be made pursuant to R. S. 18:10-31.		
	<hr/>	
	\$229,975 00	
	<hr/> <hr/>	

E 7. School for the Deaf.

For salaries and wages and for maintenance of the New Jersey School for the Deaf, on a basis of three hundred and seventy-five pupils.

		<i>Account No.</i>
Salaries and Wages:		
Superintendent	\$5,000 00	E 7 A
Principal, teachers and instructors ...	137,345 00	E 7 D-a
Other officers and em- ployees	76,315 00	E 7 D-b
Medical and surgical fees	900 00	E 7 D-c
	<hr/> \$219,560 00	
Materials and Supplies:		
Food	\$39,000 00	E 7 E-a
Clothing	1,500 00	E 7 E-b
Heat, light, power, water, gas and elec- tricity	25,000 00	E 7 E-c
Household supplies ..	8,000 00	E 7 E-d
Farm, stable and grounds supplies ..	1,200 00	E 7 E-e
Industrial and voca- tional supplies	6,500 00	E 7 E-l
Medical and surgical supplies	800 00	E 7 E-f
Educational, recrea- tional and library supplies	4,500 00	E 7 E-k
Stationery and office supplies	500 00	E 7 E-g
Vehicular transporta- tion supplies	1,200 00	E 7 E-h
Other materials and supplies	350 00	E 7 E-o
	<hr/> 88,550 00	
Current repairs	7,150 00	E 7 G
Services Other Than Personal:		
Traveling expenses (including chil- dren's carfare) ...	\$1,000 00	E 7 F-a
Entertainment ex- penses	750 00	E 7 F-n
Freight, express and cartage	50 00	E 7 F-i

		<i>Account No.</i>
Postage	350 00	E 7 F-d
Telephone and tele- graph	1,200 00	E 7 F-h
	<u>3,350 00</u>	
Additions and Improvements:		
Earphones and equip- ment	\$2,000 00	E 7 H-d
Replacement heating equipment	10,000 00	E 7 H-c
	<u>12,000 00</u>	
Payments under this account to be made pursuant to R. S. 18:10-31.		
	<u>\$330,610 00</u>	

E 8. State Board of Education.

Expenses incurred by the Board of Education	\$1,400 00	E 8 F-v
Fire and other insurance premiums on buildings under control of State Board of Education	26,500 00	E 8 F-b
Payments under this account to be made pursuant to R. S. 18:10-31.		
	<u>\$27,900 00</u>	

E 9. State Board of Examiners.

Salaries:		
Head clerk	\$2,100 00	E 9 D-a
Clerical services	2,880 00	E 9 D-b
	<u>\$4,980 00</u>	
Materials and Supplies:		
Stationery and office supplies	660 00	E 9 E-g

Services Other Than Personal:		<i>Account No.</i>
Traveling expenses ..	\$200 00	E 9 F-a
Miscellaneous ex- penses	50 00	E 9 F-t
	<hr/>	
		250 00
Payments under this account to be made pursuant to R. S. 18:10-31.		
		<hr/>
		\$5,890 00
		<hr/> <hr/>

E 10. State Teachers College, Glassboro.

For salaries and wages and for the maintenance of the State Teachers College, Glassboro, on the basis of three hundred and sixty students.

Salaries and Wages:		
President	\$7,500 00	E 10 A
Teachers	94,703 84	E 10 D-a
Other employees	21,729 00	E 10 D-b
	<hr/>	
		\$123,932 84
Materials and Supplies:		
Heat, light, power, water, gas and elec- tricity	\$10,000 00	E 10 E-c
Farm, stable and grounds supplies ..	400 00	E 10 E-e
Educational, recrea- tional and library supplies	6,000 00	E 10 E-k
Stationery and office supplies	500 00	E 10 E-g
Household supplies ..	600 00	E 10 E-d
Medical, surgical and laboratory supplies	100 00	E 10 E-f
Vehicular transporta- tion supplies	100 00	E 10 E-h
Office equipment re- placement	100 00	E 10 E-i
	<hr/>	
		17,800 00
Current repairs		3,800 00 E 10 G

Services Other Than Personal:		<i>Account No.</i>
Traveling expenses ..	\$450 00	E 10 F-aa
Traveling expenses, supervisors of stu- dent teaching	1,000 00	E 10 F-ab
Postage	600 00	E 10 F-d
Telephone and tele- graph	450 00	E 10 F-h
Rents	80 00	E 10 F-g
Miscellaneous ex- penses	375 00	E 10 F-t
Printing	515 00	E 10 F-e
	3,470 00	

Additions and Improvements:

Farm, stable and grounds equip- ment	400 00	E 10 H-e
---	--------	----------

Unclassified:

In addition to the several amounts above appropriated, there may be expended upon the approval of the State House Commission any moneys received from dormitory or extension course fees or charges in excess of the receipts anticipated.

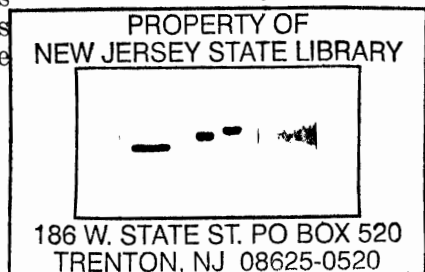
E 10 I

The moneys in this item appropriated to be deducted in the same manner as the moneys appropriated to normal schools are required to be deducted, pursuant to R. S. 18:10-31.

\$149,402 84

E 11. State Teachers College, Jersey City.

For salaries and wages and for the maintenance of the State Teachers College, Jersey City, on the basis of four hundred and twenty-five students.



Salaries and Wages:

		<i>Account No.</i>
President	\$7,500 00	E 11 A
Teachers	116,080 00	E 11 D-a
Other employees	25,165 00	E 11 D-b
	<hr/> \$148,745 00	

Materials and Supplies:

Heat, light, power, water, gas and elec- tricity	\$5,945 00	E 11 E-c
Educational, recrea- tional and library supplies	8,000 00	E 11 E-k
Stationery and office supplies	700 00	E 11 E-g
Other materials and supplies	150 00	E 11 E-o
Household supplies ..	1,350 00	E 11 E-d
Ground supplies	400 00	E 11 E-e
Medical, surgical and laboratory supplies	100 00	E 11 E-f
Office equipment re- placement	350 00	E 11 E-i
	<hr/> 16,995 00	
Current repairs	5,200 00	E 11 G

Services Other Than Personal:

Traveling expenses ..	\$500 00	E 11 F-aa
Postage	600 00	E 11 F-d
Telephone and tele- graph	650 00	E 11 F-h
Miscellaneous ex- penses	550 00	E 11 F-t
Printing, including catalog	700 00	E 11 F-e
Traveling expenses— Supervision of stu- dent training	550 00	E 11 F-ab
	<hr/> 3,550 00	

Unclassified:

In addition to the several amounts above appropriated, there may be expended upon the approval of the State House Commission any moneys received from extension course fees or charges in excess of the receipts anticipated.

The moneys in this item appropriated to be deducted in the same manner as the moneys appropriated to normal schools are required to be deducted, pursuant to R. S. 18:10-31.

*Account No.***E 11 I**

 \$174,490 00

E 12. State Teachers College, Newark.

For salaries and wages, and for maintenance of the State Teachers College, Newark, on the basis of five hundred and seventy-five students.

Salaries and Wages:

President	\$7,500 00	E 12 A
Teachers	173,747 53	E 12 D-a
Other employees	26,340 00	E 12 D-b
	<hr/>	
	\$207,587 53	

Materials and Supplies:

Heat, light, power, water, gas and electricity	\$5,600 00	E 12 E-c
Educational, recreational and library supplies	6,500 00	E 12 E-k
Stationery and office supplies	1,150 00	E 12 E-g
Ground supplies (including ash removal)	500 00	E 12 E-e
Household supplies ..	700 00	E 12 E-d

Office equipment re- placement	500 00	<i>Account No.</i> E 12 E-i
Medical and labora- tory supplies	100 00	E 12 E-f
	<hr/>	15,050 00
Current repairs		8,800 00 E 12 G
Services Other Than Personal:		
Traveling expenses ..	\$450 00	E 12 F-aa
Traveling expenses— supervisors of stu- dent training	1,200 00	E 12 F-ab
Postage	1,000 00	E 12 F-d
Telephone and tele- graph	800 00	E 12 F-h
Printing	1,450 00	E 12 F-e
Miscellaneous ex- penses	500 00	E 12 F-t
	<hr/>	5,400 00
Additions and Improvements:		
Equipment — Industrial Arts De- partment		1,200 00 E 12 H-f
Unclassified:		
In addition to the several amounts above appropriated, there may be expended upon the approval of the State House Commission any moneys received from extension course fees or charges in excess of the receipts anticipated.		E 12 I
Payments under this account to be made pursuant to R. S. 18:10-31.		

\$238,037 53

E 13. State Teachers College, Paterson.

For salaries and wages, and for maintenance of the State Teachers College, Paterson, on the basis of three hundred students, pursuant to the provisions of R. S. 18:16-29 and R. S. 18:16-19.

Salaries and Wages:		<i>Account No.</i>
President	\$7,500 00	E 13 A
Teachers	80,390 00	E 13 D-a
Other employees	13,450 00	E 13 D-b
	<hr/>	
	\$101,340 00	
 Materials and Supplies:		
Educational, recreational and library supplies	\$4,400 00	E 13 E-k
Stationery and office supplies	500 00	E 13 E-g
Other materials and supplies	100 00	E 13 E-o
Heat, light, power, water, gas and electricity	3,000 00	E 13 E-c
Household supplies ..	450 00	E 13 E-d
	<hr/>	
	8,450 00	
Current repairs	100 00	E 13 G
 Services Other Than Personal:		
Traveling expenses ..	\$450 00	E 13 F-aa
Traveling expenses—student teaching ..	400 00	E 13 F-ab
Postage	600 00	E 13 F-d
Telephone and telegraph	600 00	E 13 F-h
Miscellaneous expenses	300 00	E 13 F-t
Printing	525 00	E 13 F-e
	<hr/>	
	2,875 00	

Additions and Improvements:

Educational and recreational equipment	\$175 00	<i>Account No.</i> E 13 H-f
Other equipment	250 00	E 13 H-g
	425 00	

Unclassified:

In addition to the several amounts above appropriated, there may be expended upon the approval of the State House Commission any moneys received from extension course fees or charges in excess of the receipts anticipated.

E 13 I

The moneys in this item appropriated to be deducted in the same manner as the moneys appropriated to normal schools are required to be deducted, pursuant to R. S. 18:10-31.

\$113,190 00

E 14. State Teachers College, Montclair.

For salaries and wages and for maintenance of the State Teachers College, Montclair, on the basis of six hundred and ninety students.

Salaries and Wages:

President	\$7,500 00	E 14 A
Teachers	240,827 66	E 14 D-a
Other employees	52,374 00	E 14 D-b
	\$300,701 66	

Materials and Supplies:

Food	\$32,800 00	E 14 E-a
Heat, light, power, water, gas and electricity	17,500 00	E 14 E-c
Educational, recreational and library supplies	10,500 00	E 14 E-k

Stationery and office supplies	1,300 00	<i>Account No.</i> E 14 E-g
Office equipment replacement	300 00	E 14 E-i
Ground supplies	900 00	E 14 E-e
Other materials and supplies	1,000 00	E 14 E-o
Household supplies ..	3,500 00	E 14 E-d
Vehicular transportation supplies	200 00	E 14 E-h
Medical, surgical and laboratory supplies.	200 00	E 14 E-f
	<hr/>	
	68,200 00	
Current repairs	13,000 00	E 14 G
Services Other Than Personal:		
Traveling expenses ..	\$500 00	E 14 F-aa
Traveling expenses, practice teaching ..	2,000 00	E 14 F-ab
Postage	1,850 00	E 14 F-d
Telephone and telegraph	1,500 00	E 14 F-h
Printing	1,650 00	E 14 F-e
Miscellaneous expenses	550 00	E 14 F-t
	<hr/>	
	8,050 00	
Additions and Improvements:		
Engineering and scientific equipment	200 00	E 14 H-d
Unclassified:		
In addition to the several amounts above appropriated, there may be expended upon the approval of the State House Commission any moneys received from dormitory or extension course fees or charges in excess of the receipts anticipated.		
		E 14 I
Payments under this account to be made pursuant to R. S. 18:10-31.		

\$390,151 66

E 15. State Teachers College, Trenton.

For salaries and wages, and for the maintenance of the State Teachers College, Trenton, on the basis of seven hundred and forty students.

Salaries and Wages:

		<i>Account No.</i>
President	\$7,500 00	E 15 A
Business manager ...	4,000 00	E 15 D-a
Teachers	233,254 00	E 15 D-b
Other employees	97,783 00	E 15 D-c
	<hr/> \$342,537 00	

Materials and Supplies:

Food	\$59,000 00	E 15 E-a
Heat, light, power, water, gas and elec- tricity	31,200 00	E 15 E-c
Educational, recrea- tional and library supplies	10,000 00	E 15 E-k
Stationery and office supplies	1,000 00	E 15 E-g
Other materials and supplies	150 00	E 15 E-o
Vehicular transporta- tion supplies	400 00	E 15 E-h
Ground supplies	500 00	E 15 E-e
Household supplies ..	4,000 00	E 15 E-d
Medical, surgical and laboratory supplies	300 00	E 15 E-f
Institutional equip- ment replacement .	375 00	E 15 E-q
Office equipment re- placement	750 00	E 15 E-i
	<hr/> 107,675 00	
Current repairs	11,000 00	E 15 G

Services Other Than Personal:		<i>Account No.</i>
Traveling expenses ..	\$400 00	E 15 F-a
Expenses, supervision of student teaching.	1,700 00	E 15 F-u
Postage	1,400 00	E 15 F-d
Household expenses .	4,500 00	E 15 F-p
Telephone and tele- graph	3,000 00	E 15 F-h
Rents	900 00	E 15 F-g
Miscellaneous ex- penses	750 00	E 15 F-t
Printing	725 00	E 15 F-e
	<hr/>	
		13,375 00

Additions and Improvements:		
Equipment, Industrial Arts Department ..	\$250 00	E 15 H-fa
Equipment, Business Education Depart- ment	985 00	E 15 H-fb
	<hr/>	
		1,235 00

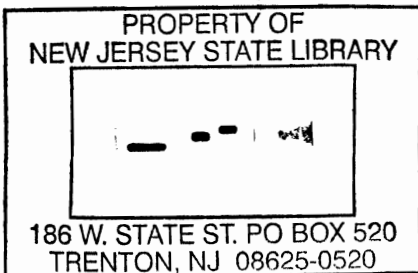
Unclassified:

In addition to the several amounts above appropriated, there may be expended upon the approval of the State House Commission any moneys received from dormitory or extension course fees or charges in excess of the receipts anticipated.

E 15 I

Payments under this account to be made pursuant to R. S. 18:10-31.

\$475,822 00



E 16. Teachers' Libraries.

Establishment and maintenance of libraries for use of teachers	\$400 00	<i>Account No.</i> E 16 I
Payments under this account to be made pursuant to R. S. 18:10-31.		

**E 17. Teachers' Retirement Fund—Pension and
Annuity Fund.**

State Treasurer, for expenses in- curred in connection with the fund, pursuant to article 3, chapter 13 of Title 18 of the R. S.		
Salaries of clerks	\$5,720 00	E 17 D
Materials and supplies and miscellaneous ex- penses	100 00	E 17 E-o
	<u>\$5,820 00</u>	
Payments under this account to be made pursuant to R. S. 18:10-31.		

E 18. Vocational Schools.

For the purpose of carrying into effect the provisions of chapter 76, laws of 1916, which provides for the appropriation of State funds for the purpose of carrying out the pro- visions of article 5, chapter 15, of Title 18 of the R. S., which author- ized State aid for vocational schools	\$400,000 00	E 18 I
State aid, Bergen county vocational school, pursuant to chapter 287, laws of 1941	10,000 00	E 18 J

	<i>Account No.</i>
Abolishing mosquito-breeding, pursuant to R. S. 26:9-1 to 26:9-26, inclusive, and investigations incident thereto	13,940 00 F 1 L
Investigation of oyster propagation, pursuant to R. S. 4:16-10	6,496 00 F 1 M
Department of Poultry Husbandry, pursuant to R. S. 4:16-12 to 4:16-16, inclusive, also 4:16-9 including poultry specialists for South Jersey	26,140 00 F 1 N
Seed inspection, pursuant to R. S., chapter 8 of Title 4	10,200 00 F 1 O
Investigational work with greenhouse crops	11,280 00 F 1 P
Insecticide inspection, pursuant to article 4, chapter 7 of Title 4 of the R. S.	500 00 F 1 Q
Educational service in Agricultural Extension, pursuant to the provisions of R. S. 4:16-22 to 4:16-30 of the R. S. and other Agricultural Extension work	102,814 88 F 1 R
Cranberry and blueberry investigation	7,115 00 F 1 S
Egg-laying and breeding tests pursuant to the provisions of R. S. 18:15-6 and 18:15-7 and R. S. 4:16-17 including squab breeding tests	11,020 00 F 1 T
Experimental work in growing white potatoes, sweet potatoes and tomatoes	10,740 00 F 1 U
Legume inoculation inspection	1,030 00 F 1 V
Sewage investigation, pursuant to R. S. 4:16-11	20,360 00 F 1 W
For the purpose of carrying into effect the provisions of article 2, chapter 12 of Title 4 of the R. S., creamery inspection	2,730 00 F 1 X

Account No.

Investigation of vegetable diseases..	3,250 00	F 1 Y
Investigation of bee husbandry	3,415 00	F 1 Z
Investigations of diseases of orna- mental plants and nursery stock ..	3,775 00	F 1 II
Combating insects affecting fruit and ornamental plants	9,295 00	F 1 JJ
Experimental work with small fruits	4,150 00	F 1 KK
Spray residue investigations	5,600 00	F 1 LL
Control of insects affecting vegetable crops investigations	4,580 00	F 1 MM
Maintenance of a turkey breeding and feeding research farm	5,950 00	F 1 NN
Investigation and research as to causes of Bang's disease and mastitis among cattle	11,890 00	F 1 OO
Expenses incurred in soil conserva- tion studies	5,100 00	F 1 PP

Services Other Than Personal:

Maintenance of Boys' and Girls' 4-H Club exhibits and pay- ment of premiums..	\$7,500 00	F 1 QQ
Maintenance and re- pairs, State build- ings at New Jersey State Fair, also premiums for live stock, poultry, hor- ticultural, agricul- tural and home eco- nomics exhibits at the New Jersey State Fair and the several county fairs	4,500 00	F 1 RR
	<hr/>	12,000 00

Current Repairs:

Repairs to green- houses	\$1,000 00	F 1 SS
Repairs to poultry buildings and fences	750 00	F 1 TT
	<hr/>	1,750 00

Additions and Improvements:		<i>Account No.</i>
Additional farm equipment	3,275 00	F 1 UU

North Jersey Branch.

Maintenance, improve- ments and equipment.	\$35,650 00	F 1 VV
Experimental purposes in dairy farming	5,650 00	F 1 WW
	<hr style="width: 100%;"/>	
	41,300 00	
	<hr style="width: 100%;"/>	
	\$536,765 88	
	<hr style="width: 100%;"/>	

F 2. Department of Agriculture.

Salaries and administration of the Department of Agriculture pursu- ant to chapter 1 of Title 4 of the R. S.	\$70,045 00	F 2 I
Editorial Division	9,405 00	F 2 J
Tuberculosis eradication	\$74,115 00	F 2 K
Appraisements — con- demned cattle	28,000 00	F 2 L
	<hr style="width: 100%;"/>	
	102,115 00	
Contagious abortion control and Bang's Disease control pursu- ant to article 3, chap- ter 5 of Title 4 of the R. S.	\$32,095 00	F 2 M
Indemnities—condemned cattle	50,000 00	F 2 N
	<hr style="width: 100%;"/>	
	82,095 00	
Poultry disease control	5,370 00	F 2 O
Miscellaneous animal disease control	6,490 00	F 2 P
Fruit and vegetable marketing, pur- suant to chapter 10 of Title 4 of the R. S.	10,060 00	F 2 Q
Crops and markets information service	7,040 00	F 2 R

		<i>Account No.</i>
Poultry products, marketing, pursuant to chapter 10 of Title 4 of the R. S.	10,815 00	F 2 S
Dairy products marketing	4,835 00	F 2 T
Farm statistics	10,100 00	F 2 U
Plant inspection	21,370 00	F 2 V
Bee disease control	2,925 00	F 2 W
Japanese beetle control	47,155 00	F 2 X
Gipsy moth extermination	11,200 00	F 2 Y
Licensing and bonding	8,110 00	F 2 Z
Fresh egg law enforcement	10,155 00	F 2 II
Dutch elm disease control	37,885 00	F 2 JJ
Poultry Promotion, pursuant to article 1 of chapter 3 of Title 4 of the R. S.	1,800 00	F 2 KK
	<hr/>	
	\$458,970 00	
	<hr/> <hr/>	

F 3. State Soil Conservation Committee.

Salaries:

Compensation of employees	\$2,000 00	F 3 D
---------------------------------	------------	-------

Services Other Than Personal:

Traveling expenses	1,000 00	F 3 F-a
--------------------------	----------	---------

	<hr/>	
	\$3,000 00	
	<hr/> <hr/>	

G. MILITARY.

G 1. Adjutant-General's Department.

Salaries:

Adjutant-General ...	\$7,500 00	G 1 A
Deputy Adjutant-General	6,223 00	G 1 D-a
Chief, War Records and Mobilization Division	6,463 00	G 1 D-b

Assistant State Service Officers (3)	9,120 00		<i>Account No.</i> G 1 D-c
Chief, Organization and Training Section	4,272 00		G 1 D-d
Clerical services	33,452 00		G 1 D-e
	<hr/>	\$67,030 00	
Materials and Supplies:			
Stationery and office supplies	\$1,000 00		G 1 E-g
Vehicular transportation supplies	1,000 00		G 1 E-h
Office equipment replacement	200 00		G 1 E-i
	<hr/>	2,200 00	
Services Other Than Personal:			
Printing and binding.	\$1,300 00		G 1 F-e
Traveling expenses ..	1,000 00		G 1 F-a
Miscellaneous expenses	500 00		G 1 F-t
	<hr/>	2,800 00	
Extraordinary Expenses:			
Repair of old flags ..	\$1,500 00		G 1 G
Compiling list of eligible voters from New Jersey in the armed forces	15,000 00		G 1 I
	<hr/>	16,500 00	
		<hr/>	
		\$88,530 00	
		<hr/> <hr/>	

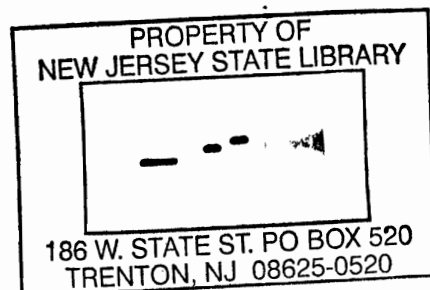
G 2. National Guard and/or State Guard.

Maintenance of Organizations.

Inasmuch as the National Guard is now in Federal service, no appropriation is made for the said National Guard other than maintenance and operation of installations for this fiscal year. The expenses required in connection with the State Guard may be provided by special defense legislation as soon as those expenses are determined.

Maintenance of Armories, Arsenals and Camp Grounds.

Allowance for rent of quarters, heat and light, and miscellaneous expenses for companies or troops stationed in towns and cities not quartered in State-owned armories, namely, Flemington, Freehold, Garages, and Sea Girt Garage	\$12,000 00	<i>Account No.</i> G 2 J-a
State camp grounds, salaries, wages and maintenance, including arsenal at Sea Girt and maintenance thereof .	35,000 00	G 2 J-b
Regimental armories at Jersey City, Paterson, Trenton (2), Teaneck and two at Newark and two at Camden..	130,000 00	G 2 J-c
Troop, battery and battalion armories at East Orange, Elizabeth, Red Bank, Orange, Westfield, Passaic, Englewood,		



Atlantic City, West Orange, Morristown, Newark Air Port, Cumberland county and Freehold	100,000 00	<i>Account No.</i> G 2 J-d
Company armories at Somerville, Bridgeton, Dumont, Asbury Park, New Brunswick, Mount Holly, Burling- ton, Flemington, Hack- ensack, Salem, Wood- bury, Trenton, Plain- field, Atlantic City, Newark, Camden and Garages at Trenton, West Orange, Lodi, Westfield and Wood- bury	45,000 00	G 2 J-e
Fire insurance on all military buildings and contents	33,735 00	G 2 J-f
Insurance (other than fire)	16,000 00	G 2 J-g
Rent of drill hall for headquarters and ma- chine gun troops, Newark	5,500 00	G 2 J-h
Automobile maintenance	3,000 00	G 2 J-i
Salary and expenses of Superintendent of Building Construction	6,000 00	G 2 J-j
	<u> </u>	\$386,235 00

Army Instruction and Field Training.

Pay of caretakers and mechanics for motor- ized and mounted or- ganizations	\$8,000 00	G 2 K-a
Salary of clerk to senior inspector-instructor...	1,740 00	G 2 K-b
	<u> </u>	9,740 00

General Maintenance Expenses.

	<i>Account No.</i>
Military boards expenses	375 00 G 2 L

Armory Construction.

Renovations, repairs and additions to thirty-nine armories, buildings at camp grounds and rifle range	37,500 00 G 2 M
--	------------------------

Compensation Awards.

Compensation, hospitali- zation and medical atten- dance due to inju- ries received in Na- tional Guard service under provisions of chapter 11 of Title 38 of the R. S.	\$5,936 07	G 2 N-a
Claim of Mrs. Ida Mae Leidner for the death of her husband, Pri- vate Thomas Leidner, Troop E, 102nd Cav- alry, which occurred at Long Branch, N. J., September 15, 1938, the result of injuries received at Sea Girt, N. J., July 8, 1935 ...	531 96	G 2 N-b
	6,468 03	

All unexpended balances in the Na-
tional Guard Account for the year
ending June 30, 1942, are hereby
reappropriated.

\$440,318 03

G 3. Naval Militia.

	<i>Account No.</i>
Brigade headquarters	\$300 00 G 3 I-a
Second Battalion, Camden.	
Allowance for miscellaneous expenses in lieu of company expenses	1,000 00 G 3 I-b
Allowance for battalion headquarters	200 00 G 3 I-c
Seventh Battalion, Jersey City.	
Allowance for miscellaneous expenses in lieu of company expenses	1,000 00 G 3 I-d
Allowance for battalion headquarters	200 00 G 3 I-e
Eighth Battalion, Perth Amboy.	
Allowance for miscellaneous expenses in lieu of company expenses	1,000 00 G 3 I-f
Allowance for battalion headquarters	200 00 G 3 I-g
Pay, expenses, et cetera, of officers and enlisted men	5,000 00 G 3 I-h
Pay of shipkeepers, rent of wharves and drill hall, maintenance and general expenses	5,000 00 G 3 I-i
Maintenance of Perth Amboy armory	5,000 00 G 3 I-j
Maintenance of Camden armory	6,000 00 G 3 I-k
All unexpended balances in the Naval Militia Reserve Account for the year ending June 30, 1942, are hereby reappropriated.	

\$24,900 00

G 4. Quartermaster-General's Department.

Salaries:

		<i>Account No.</i>
Quartermaster- General	\$7,500 00	G 4 A
Compensation of other assistants ...	27,936 00	G 4 D-a
Caretaker of military equipment, signal corps	1,080 00	G 4 D-b
Caretaker for drill hall, Flemington ..	840 00	G 4 D-c
	<hr/> \$37,356 00	

Materials and Supplies:

Stationery and office supplies	500 00	G 4 E-g
-------------------------------------	--------	---------

Services Other Than Personal:

Miscellaneous expenses	200 00	G 4 F-t
------------------------------	--------	---------

All unexpended balances in the Quartermaster-General's Department for the year ending June 30, 1942, are hereby reappropriated.

\$38,056 00

H. PENSION AND RETIREMENT FUND.

H 1. Judicial Retirement Fund.

For the purpose of carrying out the provisions of article 1, chapter 6

of Title 43 of the R. S.	\$27,000 00	H 1 I
-------------------------------	-------------	-------

H 2. Pensions.

For amount required to pay pensions pursuant to various acts relative thereto, irrespective of any provisions therein that pensions shall be made in the appropriation or tax levy for the department of the public service from which the pensioner shall be so retired

Account No.
\$118,000 00 H 2 I

H 3. State Employees' Retirement System.

Expenses in carrying into effect the provisions of chapter 14 of Title 43 of the R. S.

Salaries:

Secretary	\$4,000 00	H 3 A
Compensation for assistants, present, \$19,320.00; new, \$960.00	20,280 00	H 3 D
	\$24,280 00	

Materials and Supplies:

Stationery and office supplies	\$600 00	H 3 E-g
Office equipment replacement	600 00	H 3 E-i
	1,200 00	

Services Other Than Personal:

Insurance (other than fire)	\$500 00	H 3 F-c
Printing	125 00	H 3 F-e
Miscellaneous expenses	500 00	H 3 F-t
	1,125 00	

Unclassified:

To the Treasurer of the State of New Jersey, custodian for Contingent Re- serve Fund, created by R. S. 43:14-12 and 43:14-14 State's Accrued Liability Contribution	\$149,166 00	<i>Account No.</i> H 3 I
State's share, con- tributions on ac- count of members' service	307,706 00	H 3 J
Receipts from coun- ties or municipal- ities pursuant to chapter 15 of Title 43 of the R. S., esti- mated	2,000 00	H 3 K
	458,872 00	
	\$485,477 00	

H 4. Annuity for Widows of Governors.

Annuity for widows of Governors of New Jersey, pursuant to R. S. 43:8-2	\$5,000 00	H 4 I

J. CONSTRUCTIVE.

J 1. Port Raritan District Commission.

Carrying out the provisions of chap- ter 12 of Title 12 of the R. S.		
Salaries	\$4,940 00	J 1 D
Services Other Than Personal	1,860 00	J 1 F-v
	\$6,800 00	

J 2. South Jersey Port Commission.

For the purpose of carrying out the provisions of chapter 11 of Title 12 of the R. S.

	<i>Account No.</i>
Salaries	\$25,805 00 J 2 D
Materials and supplies and miscellaneous expenses	3,000 00 J 2 E-o
Additions and Improvements:	
Dredging work in the South Jersey Port District	23,675 00 J 2 I
	<hr/>
	\$52,480 00
	<hr/> <hr/>

J 3. State Housing Authority.

Salaries:

Compensation for assistants	\$22,560 00 J 3 D
-----------------------------------	-------------------

Materials and Supplies:

Heat, light and power, water, gas and electricity	1,000 00 J 3 E-c
---	------------------

Services Other Than Personal:

Traveling expenses ..	\$1,000 00	J 3 F-a
Printing, binding, photographing and blueprinting	250 00	J 3 F-e
Miscellaneous expenses	500 00	J 3 F-t
	<hr/>	1,750 00

Unclassified:

The balance of the Revolving Fund for project preparation on the 30th day of June, 1942, is hereby reappropriated.	J 3 I
Compensation claim for widow of William Nelson	693 16 J 3 J
	<hr/>
	\$26,003 16
	<hr/> <hr/>

J 4. State Planning Board.

		<i>Account No.</i>
Salaries:		
Compensation for employees	\$11,520 00	J 4 D
Materials and Supplies:		
Stationery and office supplies	\$500 00	J 4 E-g
Photographing, blue- printing and draft- ing supplies	300 00	J 4 E-j
	800 00	
Services Other Than Personal:		
Traveling expenses ..	\$500 00	J 4 F-a
Rents	1,800 00	J 4 F-g
Printing and binding.	1,000 00	J 4 F-e
Miscellaneous ex- penses	500 00	J 4 F-t
	3,800 00	
	\$16,120 00	

J 5. South Jersey Transit Authority.

The unexpended balance June 30, 1942, of the amount appropriated pursuant to chapter 206, laws of 1941, is hereby reappropriated.	J 5 I
--	-------

K. GENERAL.

K 1. Burial Grounds.

For the care and maintenance of burial grounds, purchased by the State pursuant to chapter 171, laws of 1898	\$75 00	K 1 I
	\$75 00	

K 2. Commissioners of High Point Park.

Expenses incurred by the commission appointed pursuant to the provisions of chapter 5 of Title 13 of the R. S.

Salaries:

Superintendent and executive secretary, laborers, mechanics and other employees	\$28,180 00	<i>Account No.</i> K 2 D
---	-------------	-----------------------------

Materials and Supplies:

Heat, light, power, water, gas and electricity	\$4,500 00	K 2 E-c
Ground supplies	250 00	K 2 E-e
Vehicular transportation supplies	2,600 00	K 2 E-h
Household and organization supplies ...	600 00	K 2 E-d
Stationery and office supplies	100 00	K 2 E-g
Other materials and supplies	200 00	K 2 E-o
Supplies for the zoo..	400 00	K 2 E-n
	<hr/>	
	8,650 00	
Current repairs	5,500 00	K 2 G

Services Other Than Personal:

Telephone and telegraph	\$400 00	K 2 F-h
Insurance—auto, fire, robbery and workmen's compensation	950 00	K 2 F-c
Miscellaneous expenses	200 00	K 2 F-t
	<hr/>	
	1,550 00	

\$43,880 00

K 3. Commissioners of Palisades Interstate Park.

		<i>Account No.</i>
Salaries	\$95,000 00	K 3 D
Materials and Supplies:		
Clothing	\$750 00	K 3 E-b
Heat, light, power, water, gas and elec- tricity	6,470 00	K 3 E-c
Ground supplies	300 00	K 3 E-ea
Household and organ- ization supplies ...	350 00	K 3 E-d
Medical and surgical supplies	50 00	K 3 E-f
Motor vehicular trans- portation supplies..	3,000 00	K 3 E-h
Stationery and office supplies	430 00	K 3 E-g
Photographing and drafting supplies ..	100 00	K 3 E-ja
Farm and stable sup- plies	100 00	K 3 E-eb
Engineering supplies.	100 00	K 3 E-jb
Other materials and supplies	290 00	K 3 E-o
	<hr/>	
	11,940 00	
Current repairs	4,000 00	K 3 G
Services Other Than Personal:		
Traveling expenses ..	\$120 00	K 3 F-a
Telephone and tele- graph	1,000 00	K 3 F-h
Insurance (other than fire)	3,900 00	K 3 F-c
Postage	250 00	K 3 F-d
	<hr/>	
	5,270 00	
	<hr/>	
	\$116,210 00	
	<hr/> <hr/>	

K 4. State Crippled Children's Commission.

Carrying out the provisions of chapter 188, laws of 1926, and supplements.

		<i>Account No.</i>
Salaries:		
Director	\$5,000 00	K 4 A
Other clerical services	6,600 00	K 4 D
	<u>11,600 00</u>	
Materials and Supplies:		
Stationery and office supplies	\$275 00	K 4 E-g
Hospitalization, braces, et cetera ...	16,180 00	K 4 E-f
	<u>16,455 00</u>	
Services Other Than Personal:		
Traveling expenses	1,000 00	K 4 F-a
	<u>29,055 00</u>	

K 5. Old Barracks Association.

For the Old Barracks Association of Trenton, New Jersey, for maintenance and administration of the Old Barracks at Trenton, as a historical landmark and repository

\$2,700 00 K 5 I

K 6. Public Library Commission.

Salaries:		
Secretary and librarian	\$5,000 00	K 6 A
Assistant librarian and other employees	19,100 00	K 6 D
	<u>24,100 00</u>	

Materials and Supplies:

		<i>Account No.</i>
Stationery and office supplies	\$1,500 00	K 6 E-g
Educational and library supplies	25,000 00	K 6 E-k
Office equipment replacement	400 00	K 6 E-i
Vehicular transportation supplies	700 00	K 6 E-h
	<hr/>	
	27,600 00	

Services Other Than Personal:

Traveling expenses ..	\$400 00	K 6 F-a
Formation and aid of school and county libraries, article 2, chapter 12 of Title 18 of the R. S.	10,000 00	K 6 F-ua
Donations to libraries, subdivision A, article 3, chapter 26 of the Title 52 of the R. S.	200 00	K 6 F-ub
Freight, express and cartage	500 00	K 6 F-i
Printing and binding.	1,400 00	K 6 F-e
Miscellaneous expenses	175 00	K 6 F-t
	<hr/>	
	12,675 00	
	<hr/> <hr/>	
	\$64,375 00	

K 7. Unclaimed Wages.

The Comptroller is hereby authorized to pay from this fund any claim for unclaimed wages, properly approved.

K 7 I

K 8. Rehabilitation Commission.

For the purpose of carrying into effect the provisions of chapter 16 of Title 34 of the R. S.

Salaries:		<i>Account No.</i>
Administrative	\$20,000 00	K 8 B
Physicians in charge and assistants	22,600 00	K 8 D-a
Vocational examiners	35,160 00	K 8 D-b
Clinical employees ..	22,740 00	K 8 D-c
Clerical and other em- ployees	24,840 00	K 8 D-d
Janitor service	1,860 00	K 8 D-e
	<hr/> \$127,200 00	
 Materials and Supplies:		
Heat, light, power, water, gas and elec- tricity	\$1,100 00	K 8 E-c
Office equipment re- placement	700 00	K 8 E-i
Stationery and office supplies	400 00	K 8 E-g
Medical, surgical and laboratory supplies	19,000 00	K 8 E-f
Household and organ- ization supplies ...	150 00	K 8 E-d
Tuition and vocational supplies	21,000 00	K 8 E-k
	<hr/> 42,350 00	
Current repairs	700 00	K 8 G
 Services Other Than Personal:		
Traveling expenses ..	\$14,000 00	K 8 F-a
Rents	6,150 00	K 8 F-g
Insurance (other than fire)	121 80	K 8 F-c
Household expenses..	1,500 00	K 8 F-p

Freight, express and miscellaneous ex- penses	75 00	<i>Account No.</i> K 8 F-i
Printing and binding.	300 00	K 8 F-e
	<hr/>	22,146 80
		<hr/> <hr/>
		\$192,396 80

K 9. Refund of Railroad Tax.

The Comptroller of the Treasury is hereby authorized and empowered to adjust and repay any overpayment of tax assessed and penalty thereon, for any year, pursuant to section 14, chapter 208, laws of 1888, and the acts amendatory thereof and supplementary thereto, or R. S. 54:28-4, made by any railroad and canal company, and the State Treasurer is directed to pay warrants therefor issued by the Comptroller, said payment shall be deducted from the amount originally paid into and remaining undistributed in the treasury of the State, and the amount of money necessary for such purpose as ascertained is hereby appropriated.

K 9 R

**K 10. New Jersey Veterans of All Wars
Memorial Association.**

Salaries:		
Caretaker	\$300 00	K 10 A
Materials and Supplies:		
Stationery and office supplies	\$25 00	K 10 E-g
Flags	25 00	K 10 E-n
Other materials and supplies	25 00	K 10 E-o
	<hr/>	75 00
Current repairs	100 00	K 10 G

Services Other Than Personal:		<i>Account No.</i>
Printing	\$40 00	K 10 F-e
Postage	10 00	K 10 F-d
Miscellaneous ex- penses, including lighting	50 00	K 10 F-t
	<u>100 00</u>	
	<u>\$575 00</u>	

K 11. State Library.

Salaries:		
Librarian	\$5,000 00	K 11 A
Clerical services and other personnel ...	21,680 00	K 11 D
	<u>\$26,680 00</u>	
Materials and Supplies:		
Library supplies	\$4,500 00	K 11 E-k
Stationery and office supplies	400 00	K 11 E-g
	<u>4,900 00</u>	
Services Other Than Personal:		
Traveling expenses ..	\$200 00	K 11 F-a
Legislative reference department	250 00	K 11 F-u
Miscellaneous ex- penses	300 00	K 11 F-t
Printing and binding.	2,500 00	K 11 F-e
	<u>3,250 00</u>	
	<u>\$34,830 00</u>	

K 12. Commission to Mark Historic Sites.

Expenses of the commission, pursuant to chapter 1 of Title 28 of the R. S.	\$16,720 00	<i>Account No.</i> K 12 I
	<u><u> </u></u>	

K 13. Grover Cleveland Birth Place Association.

Expenses incurred by the commission appointed pursuant to chapter 270, laws of 1933	\$1,357 50	K 13 I
	<u><u> </u></u>	

K 14. State Board of Mediation.

Expenses of the State Board of Mediation, pursuant to the provisions of chapter 246, laws of 1941..	\$40,000 00	K 14 I
	<u><u> </u></u>	

L. SPECIAL FUNDS.**L 1. State Emergency Fund.**

For the State House Commission to meet conditions of emergency and contingency the sum of	\$25,000 00	L 1 I
<i>Provided, however,</i> that all disbursements therefrom shall be made upon the written authorization of members of said commission, in accordance with the provisions of chapters 20 and 22 of Title 52 of the R. S.		

For the State House
Commission to pay
compensation awards
allowed State em-
ployees

20,000 00

 \$45,000 00

Account No.
L 1 J

L 2. Fire Insurance.

For the State House Commission for
payment of fire insurance pre-
miums not otherwise provided for,
maturing during the current fiscal
year, including purchase of equip-
ment required to effect reductions
in fire rates, fire insurance on all
State buildings to be placed by
said commission, all bills to be ap-
proved by said commission, and
policies filed with the State Comp-
troller as Secretary of the State
House Commission

\$117,409 73 L 2 F-b

L 3. Debt Service.

Principal and interest requirements
on Emergency Relief Bonds au-
thorized at the election held Novem-
ber 6, 1934

\$1,265,625 00 L 3 I

X. INSTITUTIONS AND AGENCIES.

X 1. Department of Institutions and Agencies.

Salaries:		<i>Account No.</i>
Commissioner	\$15,000 00	X 1 A
Director of adminis- tration and accounts — deputy commis- sioner	7,500 00	X 1 D-a
Director, division of medicine	7,500 00	X 1 D-b
Director of statistics and research	6,000 00	X 1 D-c
Supervising steward .	5,500 00	X 1 D-d
Director of classifica- tion	4,760 00	X 1 D-e
Director of inspec- tions	3,500 00	X 1 D-f
Agricultural super- visor	4,000 00	X 1 D-g
Institutional collec- tors (2)	6,000 00	X 1 D-h
Other officers and employees	85,540 00	X 1 D-i
	<hr/> \$145,300 00	
Materials and Supplies:		
Stationery, office sup- plies and equipment	\$5,000 00	X 1 E-ga
Vehicular transporta- tion supplies	6,000 00	X 1 E-ha
	<hr/> 11,000 00	
Services Other Than Personal:		
Traveling expenses ..	\$3,400 00	X 1 F-aa
Miscellaneous ex- penses	2,100 00	X 1 F-ta
Departing aliens and nonresidents	2,000 00	X 1 F-u
	<hr/> 7,500 00	
Additions and Improvements:		
Filing cabinets	225 00	X 1 H-ba

Central Parole Bureau.

Salaries:

		<i>Account No.</i>
Director, parole and domestic relations .	\$5,000 00	X 1 D-j
Assistant directors parole and domestic relations	7,020 00	X 1 D-k
Parole officers	66,060 00	X 1 D-l
Miscellaneous services	1,000 00	X 1 D-m
Other employees	34,200 00	X 1 D-n
	113,280 00	

Materials and Supplies:

Stationery, office supplies and equipment	\$2,250 00	X 1 E-gb
Vehicular transportation supplies	6,000 00	X 1 E-hb
	8,250 00	

Services Other Than Personal:

Traveling expenses ..	\$7,000 00	X 1 F-ab
Miscellaneous expenses	900 00	X 1 F-tb
	7,900 00	

Additions and Improvements:

Filing cabinets	225 00	X 1 H-bb
-----------------------	--------	----------

Division of Old Age Assistance.

Salaries:

Director	\$4,260 00	X 1 D-o
Other officers and employees	33,600 00	X 1 D-p
	37,860 00	

Materials and Supplies:

Stationery, office supplies and equipment	\$2,700 00	X 1 E-gc
Vehicular transportation supplies	1,400 00	X 1 E-hc
	4,100 00	

		<i>Account No.</i>
Services Other Than Personal:		
Traveling expenses ..	\$1,800 00	X 1 F-ac
Miscellaneous ex- penses	600 00	X 1 F-tc
	<hr/>	
	2,400 00	
Additions and Improvements:		
Steel filing cabinets	350 00	X 1 H-bc
Industrial Supervision.		
Salaries:		
Director institutional industries	\$7,000 00	X 1 I-a
Assistant director of industries	4,500 00	X 1 I-b
Clerical services and other employees ...	23,050 00	X 1 I-c
	<hr/>	
	\$34,550 00	
Unclassified:		
Compensation Award —Peter Walsh	1,040 00	X 1 I-d
	<hr/>	
	\$35,590 00	
	<hr/> <hr/>	

For the State Use Revolving Fund there is hereby appropriated the unexpended balance of the fund now known as the "State Use Working Capital Fund," and in accordance with the provisions of R. S. 30:4-100, all receipts when received derived from State use production will be credited to the State Use Revolving Fund. X 1 ZZ

The following sum is appropriated from the State Use Revolving Fund, for further plant and equipment for State use industries from

the surplus in the revolving fund in excess of the amount of \$50,000.00. Repair, replacement and extension of State use industry, as follows:

State Prison	}					
Rahway Reformatory						
Vineland State School						
State Home for Girls						
North Jersey Training School, Totowa						
Criminal Insane and Penal Institutions.						
Reformatory, Annandale					\$37,500 00	<i>Account No.</i>
Prison Farm, Bordentown						X 1 J
Prison Farm, Leesburg						
Reformatory, Clinton Commission for the Blind						
Central Office						

Division of Architecture and Construction.

Salaries:

Director	\$6,000 00		X 1 DD-a
Assistant director and mechanical engineer	4,800 00		X 1 DD-b
Other employees	61,398 00		X 1 DD-c
	<hr/>	\$72,198 00	

Materials and Supplies:

Vehicular transportation supplies	\$2,100 00		X 1 EE-h
Stationery and office supplies	600 00		X 1 EE-g
Photographing, photostating and blue-printing supplies ..	500 00		X 1 EE-j
	<hr/>	3,200 00	

Services Other Than Personal:		<i>Account No.</i>
Traveling expenses ..	\$1,750 00	X 1 FF-a
Miscellaneous ex- penses	750 00	X 1 FF-t
	2,500 00	

It is hereby provided that additional employees shall be paid from the fees received by the division at rates fixed by the Civil Service Commission.

\$416,288 00

X 2. Colony for Feeble-Minded Males, New Lisbon.

For salaries and wages, and for maintenance of the Colony for Feeble-Minded Males, on the basis of eight hundred inmates.

Salaries and Wages:		
Superintendent	\$5,000 00	X 2 A
Other officers and em- ployees	126,080 00	X 2 D-a
Medical and surgical fees	1,200 00	X 2 D-b
Religious services ...	1,200 00	X 2 D-c
	\$133,480 00	

Materials and Supplies:		
Food	\$45,000 00	X 2 E-a
Clothing	13,750 00	X 2 E-b
Heat, light, power, water, gas and elec- tricity	36,000 00	X 2 E-c
Household supplies ..	11,000 00	X 2 E-d
Farm, stable and grounds supplies ..	17,500 00	X 2 E-e

		<i>Account No.</i>
Industrial and vocational supplies	1,800 00	X 2 E-1
Medical, surgical and laboratory supplies	3,000 00	X 2 E-f
Vehicular transportation supplies	2,250 00	X 2 E-h
Stationery and office supplies	550 00	X 2 E-g
Educational, recreational and library supplies	900 00	X 2 E-k
Other materials and supplies	1,750 00	X 2 E-o
	<hr/>	
	133,500 00	
Current repairs	8,500 00	X 2 G
 Services Other Than Personal:		
Traveling expenses ..	\$900 00	X 2 F-a
Telephone and telegraph	2,100 00	X 2 F-h
Postage	650 00	X 2 F-d
Insurance (other than fire)	600 00	X 2 F-c
Entertainment expenses	650 00	X 2 F-n
Freight, express and cartage	300 00	X 2 F-i
	<hr/>	
	5,200 00	
 Additions and Improvements:		
Purchase of additional refrigeration	1,200 00	X 2 H-h
	<hr/>	
	\$281,880 00	
	<hr/> <hr/>	

This colony is authorized to pay for the maintenance of any county indigent patient transferred from the colony to an institution for the training of the feeble-minded, to which moneys are paid by the State pur-

suant to R. S. 30:4-176, whatever sum or sums is received from the counties to pay the cost of such maintenance of any said patient in the colony.

X 3. Colony for Feeble-Minded Males, Woodbine.

For salaries and wages, and for maintenance of the Colony for Feeble-Minded Males, Woodbine, on the basis of six hundred and ninety inmates.

Salaries and Wages:		<i>Account No.</i>
Superintendent	\$4,500 00	X 3 A
Attendants, nurses and other employees	123,822 00	X 3 D-a
Medical, surgical and dental fees	1,000 00	X 3 D-b
	<hr/> \$129,322 00	
 Materials and Supplies:		
Food	\$57,000 00	X 3 E-a
Clothing	8,500 00	X 3 E-b
Heat, light, power, water, gas and elec- tricity	21,000 00	X 3 E-c
Household supplies ..	8,500 00	X 3 E-d
Farm, stable and grounds supplies ..	2,700 00	X 3 E-e
Medical and surgical supplies	2,200 00	X 3 E-f
Stationery and office supplies	600 00	X 3 E-g
Office equipment re- placement	200 00	X 3 E-i
Vehicular transporta- tion supplies	1,300 00	X 3 E-h
Educational, recrea- tional and library supplies	750 00	X 3 E-k

Replacement of fire equipment	500 00	<i>Account No.</i> X 3 E-qa
Other materials and supplies	325 00	X 3 E-o
Rebuilding smoke stack	350 00	X 3 E-qb
Recondition boilers, stokers, et cetera ..	1,500 00	X 3 E-qc
	<hr/>	105,425 00
Current repairs	7,000 00	X 3 G
Services Other Than Personal:		
Telephone and tele- graph	\$1,100 00	X 3 F-h
Traveling expenses ..	500 00	X 3 F-a
Postage	500 00	X 3 F-d
Funeral expenses ...	300 00	X 3 F-s
Insurance (other than fire)	300 00	X 3 F-c
Freight and express .	100 00	X 3 F-i
Miscellaneous ex- penses	400 00	X 3 F-t
	<hr/>	3,200 00
Unclassified:		
Compensation award to Mrs. Callo- way	581 60	X 3 I
	<hr/>	
	\$245,528 60	
	<hr/> <hr/>	

This colony is authorized to pay for the maintenance of any county indigent patient transferred from the colony to an institution for training of the feeble-minded, to which moneys are paid by the State pursuant to R. S. 30:4-176, whatever sum or sums received from the counties to pay the cost of such maintenance of any said patient in the colony.

X 4. Commission for the Blind.

Salaries:

		<i>Account No.</i>
Executive officer and secretary	\$4,000 00	X 4 A
Assistant executive officer	2,760 00	X 4 D-a
Teachers of occupational subjects and other employees ..	44,060 00	X 4 D-b
	<hr/>	
	\$50,820 00	

Materials and Supplies:

Extension of home industries	\$1,500 00	X 4 E-n
Motor vehicular transportation supplies .	320 00	X 4 E-h
Stationery and office supplies	1,350 00	X 4 E-g
Replacement of office appliances and special equipment .	500 00	X 4 E-i
	<hr/>	
	3,670 00	

Services Other Than Personal:

Traveling expenses ..	\$7,000 00	X 4 F-a
Rents (garage)	180 00	X 4 F-g
Support and instruction of the blind ...	50,000 00	X 4 F-u
Higher education of the blind	5,000 00	X 4 F-w
Expressage	1,260 00	X 4 F-i
Entertainment for the blind	300 00	X 4 F-n
Prevention of blindness	750 00	X 4 F-x
State relief for the blind	250 00	X 4 F-y
Miscellaneous expenses	250 00	X 4 F-t
	<hr/>	
	64,990 00	

Additions and Improvements:

New chlorinator	150 00	X 4 H-g
-----------------------	--------	---------

Unclassified:

		<i>Account No.</i>
Maintenance of summer camp	\$3,000 00	X 4 F-z
Payments to be made to counties in accordance with provisions of chapter 348, laws of 1941 ..	8,500 00	X 4 I
	<u>11,500 00</u>	
The balance to the credit of the outdoor relief or aid to the blind—Revolving Fund—on the thirtieth day of June, one thousand nine hundred and forty-two, is hereby reappropriated, said sum not to exceed \$8,500.00.		X 4 J
The balance to the credit of the Revolving Industrial Fund on the thirtieth day of June, one thousand nine hundred and forty-two, is hereby reappropriated as a Revolving Industrial Fund, in the sum of \$2,000.00.		X 4 K
	<u>\$131,130 00</u>	

X 5. County Insane Hospitals.

For the support of patients pursuant to R. S. 30:4-78, in County Insane Hospitals:

Atlantic	\$54,000 00	X 5 I
Burlington	41,500 00	X 5 J
Camden	126,000 00	X 5 K
Cumberland	33,000 00	X 5 L
Essex	620,000 00	X 5 M
Hudson	340,000 00	X 5 N
	<u>\$1,214,500 00</u>	

Said amounts to include payment of bills prior to current fiscal year.

X 6. County Tuberculosis Hospitals.

For the support of patients pursuant to subdivision C, article 4, chapter 9 of Title 30, of the R. S., in the following county hospitals:

		<i>Account No.</i>
Atlantic	\$17,000 00	X 6 I
Bergen	80,500 00	X 6 J
Burlington	23,900 00	X 6 K
Camden	57,500 00	X 6 L
Cape May	4,400 00	X 6 M
Cumberland	18,950 00	X 6 N
Essex	150,000 00	X 6 O
Gloucester	11,000 00	X 6 P
Hudson	180,000 00	X 6 Q
Hunterdon	4,000 00	X 6 R
Mercer	45,000 00	X 6 S
Middlesex	66,500 00	X 6 T
Monmouth	27,000 00	X 6 U
Morris	20,000 00	X 6 V
Ocean	7,000 00	X 6 W
Passaic	79,000 00	X 6 X
Salem	4,500 00	X 6 Y
Somerset	12,000 00	X 6 Z
Sussex	4,500 00	X 6 II
Union	99,000 00	X 6 JJ
Warren	5,300 00	X 6 KK
	\$917,050 00	
	\$917,050 00	

Said amounts to include payment of bills prior to current fiscal year.

X 7. Feeble-Minded.

Clothing, maintenance, support and instruction of feeble-minded \$172,500 00 X 7 I

X 8. Home for Disabled Soldiers, Menlo Park.

For salaries and wages, and for maintenance of the Home for Disabled Soldiers, Menlo Park, on the basis of eighty veterans.

		<i>Account No.</i>
Salaries and Wages:		
Superintendent	\$5,000 00	X 8 A
Other officers and employees	28,160 00	X 8 D-a
Religious services ...	150 00	X 8 D-b
	<hr/>	
	\$33,310 00	
Materials and Supplies:		
Food	\$12,300 00	X 8 E-a
Clothing	1,375 00	X 8 E-b
Heat, light, power, water, gas and electricity	4,700 00	X 8 E-c
Household supplies ..	1,200 00	X 8 E-d
Grounds (includes care of cemetery)	500 00	X 8 E-e
Stationery and office supplies	250 00	X 8 E-g
Medical, surgical and laboratory supplies	800 00	X 8 E-f
Vehicular transportation supplies	700 00	X 8 E-h
Office equipment replacement	100 00	X 8 E-i
Other materials and supplies	100 00	X 8 E-o
	<hr/>	
	22,025 00	
Current repairs	700 00	X 8 G
Services Other Than Personal:		
Household expenses ..	\$1,000 00	X 8 F-p
Traveling expenses ..	200 00	X 8 F-a
Postage	200 00	X 8 F-d
Telephone and telegraph	400 00	X 8 F-h

		<i>Account No.</i>
Funeral expenses	100 00	X 8 F-s
Entertainment ex- penses	175 00	X 8 F-n
Freight and express..	25 00	X 8 F-i
Insurance (other than fire)	300 00	X 8 F-c
	<hr/> 2,400 00	
	<hr/> <u>\$58,435 00</u>	

X 9. Home for Disabled Soldiers, Etc., Vineland.

For salaries and wages, and for maintenance of the Home for Disabled Soldiers, Sailors, et cetera, Vineland, on the basis of one hundred and thirty members.

Salaries and Wages:

Superintendent	\$5,000 00	X 9 A
Other officers and em- ployees	50,640 00	X 9 D-a
Religious services ...	200 00	X 9 D-b
Medical and surgical fees	1,000 00	X 9 D-c
	<hr/> \$56,840 00	

Materials and Supplies:

Food	\$29,000 00	X 9 E-a
Clothing	3,500 00	X 9 E-b
Heat, light, power, water, gas and elec- tricity	14,500 00	X 9 E-c
Household supplies ..	6,000 00	X 9 E-d
Grounds	400 00	X 9 E-e
Medical, surgical and laboratory supplies	1,800 00	X 9 E-f
Stationery and office supplies	350 00	X 9 E-g

Vehicular transportation supplies	500 00	<i>Account No.</i> X 9 E-h
Other materials and supplies	300 00	X 9 E-o
Replacement of refrigeration unit ...	750 00	X 9 E-na
Replacement of furniture main building .	1,200 00	X 9 E-nb
Replacement of kitchen equipment..	850 00	X 9 E-nc
Replacement of well pump	1,000 00	X 9 E-nd
Replacement of floor covering	900 00	X 9 E-ne
	<hr/>	61,050 00
Current repairs		6,000 00 X 9 G
Services Other Than Personal:		
Traveling expenses ..	\$250 00	X 9 F-a
Postage	175 00	X 9 F-d
Telephone and telegraph	450 00	X 9 F-h
Entertainment expenses	300 00	X 9 F-n
Insurance (other than fire)	260 00	X 9 F-c
Freight and express..	25 00	X 9 F-i
Household expenses ..	3,750 00	X 9 F-p
Funeral expenses	100 00	X 9 F-s
	<hr/>	5,310 00
Additions and Improvements:		
Furniture and equipment for hospital ..	\$1,000 00	X 9 H-h
Rewiring to eliminate hazards	2,000 00	X 9 H-c
	<hr/>	3,000 00
		<hr/> <hr/>
		\$132,200 00

X 10. North Jersey Training School, Totowa.

For salaries and wages and for maintenance of the North Jersey Training School for Females, Totowa, on the basis of six hundred and twenty-five inmates.

Salaries and Wages:		<i>Account No.</i>
Superintendent	\$5,000 00	X 10 A
Attendants, nurses, and other employees	140,540 00	X 10 D-a
Medical, surgical, dental, veterinary and religious fees	3,800 00	X 10 D-b
	<hr/> \$149,340 00	
 Materials and Supplies:		
Food	\$43,000 00	X 10 E-a
Clothing	10,500 00	X 10 E-b
Heat, light, power, water, gas and elec- tricity	41,000 00	X 10 E-c
Household supplies ..	11,000 00	X 10 E-d
Farm, stable and grounds supplies ..	16,500 00	X 10 E-e
Industrial and voca- tional supplies	1,600 00	X 10 E-l
Educational, recrea- tional and library supplies	1,750 00	X 10 E-k
Medical, surgical and laboratory supplies.	4,000 00	X 10 E-f
Stationery and office supplies	700 00	X 10 E-g
Vehicular transporta- tion supplies	1,950 00	X 10 E-h
Office equipment re- placement	800 00	X 10 E-i
Other materials and supplies	100 00	X 10 E-o

Replacement of tractor	1,000 00		<i>Account No.</i>
		133,900 00	X 10 E-n
Current repairs		8,000 00	X 10 G
Services Other Than Personal:			
Postage	\$500 00		X 10 F-d
Traveling expenses ..	400 00		X 10 F-a
Telephone and telegraph	1,700 00		X 10 F-h
Entertainment expenses	300 00		X 10 F-n
Insurance (other than fire)	550 00		X 10 F-c
Miscellaneous expenses	100 00		X 10 F-t
		3,550 00	
Additions and Improvements:			
Power house equipment	4,500 00		X 10 H-c
		<u>\$299,290 00</u>	

X 11. Reformatory, Annandale.

For salaries and wages and for maintenance of the Reformatory at Annandale, on the basis of five hundred inmates.

Salaries and Wages:			
Superintendent	\$5,000 00		X 11 A
Deputy superintendent	2,640 00		X 11 D-a
Medical and surgical fees	1,500 00		X 11 D-b
Other officers and employees	182,397 50		X 11 D-c
		<u>\$191,537 50</u>	

		<i>Account No.</i>
Materials and Supplies:		
Food	\$27,000 00	X 11 E-a
Clothing	14,000 00	X 11 E-b
Heat, light, power, water, gas and elec- tricity	27,000 00	X 11 E-c
Farm, stable and grounds supplies ..	14,000 00	X 11 E-e
Household supplies ..	5,900 00	X 11 E-d
Medical, surgical and laboratory supplies	1,275 00	X 11 E-f
Vehicular transporta- tion supplies	1,200 00	X 11 E-h
Stationery, office sup- plies and equipment	800 00	X 11 E-g
Educational, recrea- tional and library supplies	2,450 00	X 11 E-k
Other materials and supplies	750 00	X 11 E-o
Photographing, blue- printing and draft- ing supplies	100 00	X 11 E-j
Reconditioning and re- building boilers ...	1,800 00	X 11 E-q
	<hr/>	
	96,275 00	
Current repairs	5,500 00	X 11 G
Services Other Than Personal:		
Traveling expenses ..	\$400 00	X 11 F-a
Telephone and tele- graph	1,050 00	X 11 F-h
Postage	600 00	X 11 F-d
Freight and express .	150 00	X 11 F-i
Entertainment ex- penses	500 00	X 11 F-n
Funeral expenses ...	60 00	X 11 F-s
Payments to dis- charged inmates and recapturing escapes	3,000 00	X 11 F-u

Insurance (other than fire)	400 00	<i>Account No.</i> X 11 F-c
Household expenses..	2,250 00	X 11 F-p
	<hr/>	
	8,410 00	
	<hr/>	
	\$301,722 50	
	<hr/> <hr/>	

X 12. Reformatory, Rahway.

For salaries and wages and for maintenance of the Reformatory at Rahway on the basis of nine hundred inmates.

Salaries and Wages:

Superintendent	\$6,000 00	X 12 A
Deputy superintendent	3,000 00	X 12 D-a
Other officers and employees	297,670 00	X 12 D-b
Inmates' wages	10,000 00	X 12 D-c
Medical and surgical fees	750 00	X 12 D-d
	<hr/>	
	\$317,420 00	

Materials and Supplies:

Food	\$70,500 00	X 12 E-a
Clothing	21,000 00	X 12 E-b
Heat, light, power, water, gas and electricity	43,500 00	X 12 E-c
Household supplies ..	10,000 00	X 12 E-d
Farm, stable and grounds supplies ..	11,875 00	X 12 E-e
Industrial and vocational supplies	600 00	X 12 E-1
Educational, recreational and library supplies	1,000 00	X 12 E-k

Photographing, blue- printing and draft- ing supplies	200 00	<i>Account No.</i> X 12 E-j
Medical, surgical and laboratory supplies	1,500 00	X 12 E-f
Stationery and office supplies	1,200 00	X 12 E-g
Vehicular transporta- tion supplies	1,500 00	X 12 E-h
Office equipment re- placement	500 00	X 12 E-i
	<hr/>	163,375 00
Current repairs	20,000 00	X 12 G
Services Other Than Personal:		
Traveling expenses ..	\$400 00	X 12 F-a
Postage	500 00	X 12 F-d
Telephone and tele- graph	1,100 00	X 12 F-h
Freight and express..	50 00	X 12 F-i
P a y m e n t s t o d i s - charged inmates and recapturing escapes	400 00	X 12 F-u
Insurance (other than fire)	500 00	X 12 F-c
	<hr/>	2,950 00
		<hr/> <hr/>
		\$503,745 00

X 13. Reformatory for Women, Clinton.

For salaries and wages, and for maintenance of the Reformatory for Women, Clinton, on the basis of three hundred and ninety inmates:

Salaries and Wages:		
Superintendent	\$4,000 00	X 13 A
Assistant superintend- ent	2,040 00	X 13 D-a

Other officers and employees, present, \$89,300.00; new, \$1,080.00	90,380 00	<i>Account No.</i> X 13 D-b
Medical and surgical fees	3,500 00	X 13 D-c
Religious services ...	550 00	X 13 D-d
	<hr/>	\$100,470 00
Materials and Supplies:		
Food	\$22,500 00	X 13 E-a
Clothing	8,800 00	X 13 E-b
Heat, light, power, water, gas and electricity	20,000 00	X 13 E-c
Household supplies ..	8,500 00	X 13 E-d
Farm, stable and ground supplies ...	8,975 00	X 13 E-e
Medical and surgical supplies	3,000 00	X 13 E-f
Stationery and office supplies	750 00	X 13 E-g
Educational, recreational and library supplies	650 00	X 13 E-k
Vehicular transportation supplies	1,200 00	X 13 E-h
Cannery supplies ...	1,800 00	X 13 E-l
Replacement of farm equipment	500 00	X 13 E-pa
Replacement of power lawn mower	550 00	X 13 E-pb
	<hr/>	77,225 00
Current repairs		5,350 00 X 13 G
Services Other Than Personal:		
Traveling expenses ..	\$425 00	X 13 F-a
Postage	800 00	X 13 F-d
Telephone and telegraph	750 00	X 13 F-h
Insurance (other than fire)	300 00	X 13 F-c

		<i>Account No.</i>
Freight and express..	100 00	X 13 F-i
Entertainment ex- penses	600 00	X 13 F-n
Funeral expenses	100 00	X 13 F-s
P a y m e n t s to dis- charged inmates and recapturing escapes	1,850 00	X 13 F-u
	<hr/> 4,925 00	
Additions and Improvements:		
Laundry equipment ..	\$1,500 00	X 13 H-h
Identification equip- ment	275 00	X 13 H-g
	<hr/> 1,775 00	
	<hr/> <u>\$189,745 00</u>	

X 14. Sanatorium for Tuberculous Diseases.

For salaries and wages, and for the maintenance of the Sanatorium for Tuberculous Diseases, on the basis of four hundred and seventy-one patients.

Salaries and Wages:		
Superintendent	\$8,000 00	X 14 A
Physicians, clerks, nurses, farm help, instructors and oth- ers, including school teachers	250,240 00	X 14 D-a
Clinic salaries	12,340 00	X 14 D-b
Medical and surgical fees	100 00	X 14 D-c
Religious services ...	700 00	X 14 D-d
	<hr/> \$271,380 00	
Materials and Supplies:		
Food	\$130,000 00	X 14 E-a
Clothing	1,000 00	X 14 E-b

Heat, light, power, wa- ter, gas and elec- tricity	50,000 00	<i>Account No.</i> X 14 E-c
Household supplies ..	16,000 00	X 14 E-d
Farm, stable and ground supplies ...	3,500 00	X 14 E-e
Medical, surgical and laboratory supplies	13,000 00	X 14 E-f
Stationery and office supplies	1,100 00	X 14 E-g
Educational, recrea- tional and library supplies	600 00	X 14 E-k
Vehicular transporta- tion supplies	2,200 00	X 14 E-h
Clinic supplies	175 00	X 14 E-n
Office equipment re- placement	350 00	X 14 E-i
Replacement of trucks	1,200 00	X 14 E-m
R e p l a c e m e n t o f kitchen equipment .	1,000 00	X 14 E-qa
Replacement of dish- washer and tables..	2,000 00	X 14 E-qb
Rebuild filters and re- place air compressor and electric motor at water pumping plant	1,000 00	X 14 E-qc
Repairs to elevator in infirmery	1,200 00	X 14 E-qd
	<hr/>	
	224,325 00	
Current repairs	15,000 00	X 14 G
Services Other Than Personal:		
Traveling expenses..	\$700 00	X 14 F-a
Postage	700 00	X 14 F-d
Telephone and tele- graph	2,400 00	X 14 F-h
Insurance (other than fire)	384 00	X 14 F-c
Freight and express..	250 00	X 14 F-i
Entertainment ex- penses	500 00	X 14 F-n

Miscellaneous expenses	50 00		<i>Account No.</i>
Clinic expenses	3,000 00		X 14 F-t
		7,984 00	X 14 F-u
Additions and Improvements:			
Purchase of additional fire protection equipment	\$1,000 00		X 14 H-ga
Rewiring employees building A. C. lines	4,000 00		X 14 H-c
Purchase of medical and surgical equipment	675 00		X 14 H-d
Purchase of floor polishing machines and repairing present ones	500 00		X 14 H-gb
		6,175 00	
Unclassified:			
Compensation award, Joan MacLennon		1,040 00	X 14 I
		<u>\$525,904 00</u>	

X 15. State Board of Children's Guardians.

Salaries:			
Executive director ..	\$6,500 00		X 15 A
Supervisors	8,520 00		X 15 D-a
Departmental auditor	3,000 00		X 15 D-b
Compensation for other assistants ...	434,398 00		X 15 D-c
		\$452,418 00	
Materials and Supplies:			
Stationery and office supplies	\$6,500 00		X 15 E-g
Office equipment replacement	3,500 00		X 15 E-i
Vehicular transportation supplies	18,650 00		X 15 E-h
		28,650 00	

Services Other Than Personal:		<i>Account No.</i>
Traveling expenses ..	\$6,500 00	X 15 F-a
Postage	12,500 00	X 15 F-d
Telephone and tele- graph	4,500 00	X 15 F-h
Rents	8,500 00	X 15 F-g
Miscellaneous ex- penses	600 00	X 15 F-t
Insurance (other than fire)	2,050 00	X 15 F-c
	<hr/>	
		34,650 00

Additions and Improvements:

Office appliances (new) 935 00 X 15 H-b

Revolving Fund:

For the State Board of Children's Guardians to purchase clothing and other necessary articles for children in their care and for expenses incidental thereto the Revolving Fund of \$75,000.00 heretofore appropriated is reappropriated, all receipts when received to be credited to this fund. The same to be known as the State Board of Children's Guardians Revolving Fund.

X 15 I

\$516,653 00

X 16. State Home for Boys.

For salaries and wages and for maintenance of the State Home for Boys, on the basis of five hundred and eighty inmates.

		<i>Account No.</i>
Salaries and Wages:		
Superintendent	\$5,000 00	X 16 A
Business manager ...	3,000 00	X 16 D-a
Resident physician ..	3,000 00	X 16 D-b
Other officers and em- ployees	191,379 96	X 16 D-c
Medical, surgical and veterinary fees	1,000 00	X 16 D-d
	<hr/>	
	\$203,379 96	
 Materials and Supplies:		
Food	\$40,000 00	X 16 E-a
Clothing	20,000 00	X 16 E-b
Heat, light, power, water, gas and elec- tricity	38,000 00	X 16 E-c
Household supplies ..	11,500 00	X 16 E-d
Farm, stable and ground supplies ...	17,500 00	X 16 E-e
Industrial and voca- tional supplies	3,000 00	X 16 E-la
Educational, recrea- tional and library supplies	3,000 00	X 16 E-k
Medical, surgical and laboratory supplies	2,900 00	X 16 E-f
Stationery and office supplies	1,000 00	X 16 E-g
Vehicular transporta- tion supplies	2,150 00	X 16 E-h
Office equipment re- placement	200 00	X 16 E-i
Replacement of kitchen equipment	250 00	X 16 E-qa
Replacement of tractor	1,200 00	X 16 E-p
Replacement of sew- ing machines	200 00	X 16 E-lb
Replacement of feed water heater	4,500 00	X 16 E-qb
	<hr/>	
	145,400 00	
Current repairs	11,000 00	X 16 G

Services Other Than Personal:		<i>Account No.</i>
Traveling expenses ..	\$600 00	X 16 F-a
Postage	700 00	X 16 F-d
Telephone and tele- graph	1,450 00	X 16 F-h
Entertainment ex- penses	300 00	X 16 F-n
Freight and express .	150 00	X 16 F-i
Insurance (other than fire)	350 00	X 16 F-c
	3,550 00	
Additions and Improvements:		
Purchase of deep well pump	900 00	X 16 H-c
	\$364,229 96	

X 17. State Home for Girls.

For salaries and wages, and for main-
tenance of the State Home for Girls
on the basis of three hundred
twenty-five inmates.

Salaries and Wages:		
Superintendent	\$4,000 00	X 17 A
Physician	2,500 00	X 17 D-a
T e a c h e r s , nurses, clerks and others, present, \$90,620.00; new, \$960.00	91,580 00	X 17 D-b
Medical, surgical and dental fees	2,300 00	X 17 D-c
	\$100,380 00	

		<i>Account No.</i>
Materials and Supplies:		
Food	\$29,000 00	X 17 E-a
Clothing	7,500 00	X 17 E-b
Heat, light, power, water, gas and elec- tricity	5,200 00	X 17 E-c
Household supplies ..	8,500 00	X 17 E-d
Farm, stable and grounds supplies ..	4,400 00	X 17 E-e
Educational, recrea- tional and library supplies	2,000 00	X 17 E-k
Stationery and office supplies	700 00	X 17 E-g
Medical and surgical supplies	1,300 00	X 17 E-f
Vehicular transporta- tion supplies	650 00	X 17 E-h
Other materials and supplies	400 00	X 17 E-o
	<hr/>	59,650 00
Current repairs		5,000 00 X 17 G
Services Other Than Personal:		
Traveling expenses ..	\$500 00	X 17 F-a
Postage	400 00	X 17 F-d
Telephone and tele- graph	1,250 00	X 17 F-h
Insurance (other than fire)	300 00	X 17 F-c
Freight and express .	100 00	X 17 F-i
Entertainment ex- penses	200 00	X 17 F-n
Payments to dis- charged inmates ...	200 00	X 17 F-u
	<hr/>	2,950 00
		<hr/> <hr/>
		\$167,980 00

X 18. State Hospital, Greystone Park.

For salaries and wages, and for maintenance of the State Hospital, Greystone Park, on the basis of five thousand five hundred inmates.

Salaries and Wages:

		<i>Account No.</i>
Medical superintendent and chief executive	\$8,000 00	X 18 A
Business manager ...	5,000 00	X 18 D-a
Chief engineer	4,000 00	X 18 D-b
Other officers and employees	1,089,636 00	X 18 D-c
Religious services ...	1,300 00	X 18 D-d
Clinic salaries	35,860 00	X 18 D-e
	\$1,143,796 00	

Materials and Supplies:

Food	\$432,500 00	X 18 E-a
Clothing	75,000 00	X 18 E-b
Heat, light, power, water, gas and electricity	144,600 00	X 18 E-c
Household supplies ..	86,000 00	X 18 E-d
Farm, stable and grounds supplies ..	60,000 00	X 18 E-e
Industrial and vocational supplies	5,000 00	X 18 E-1
Medical, surgical and laboratory supplies	46,000 00	X 18 E-f
Stationery and office supplies	3,000 00	X 18 E-g
Vehicular transportation supplies	6,750 00	X 18 E-h
Other materials and supplies	6,000 00	X 18 E-o
Clinic supplies	4,500 00	X 18 E-n
Replacement of fire hose and equipment	800 00	X 18 E-qa

		<i>Account No.</i>
Replacement of ten food carts	2,400 00	X 18 E-qb
Containers for food carts (replacements)	500 00	X 18 E-qc
Replacement of dining room chairs and tables	3,000 00	X 18 E-qd
Office equipment re- placement	2,000 00	X 18 E-i
Supplies for nursing school	500 00	X 18 E-k
	<hr/>	
	878,550 00	
Current repairs	50,000 00	X 18 G
 Services Other Than Personal:		
Traveling expenses ..	\$850 00	X 18 F-a
Postage	2,500 00	X 18 F-d
Telephone and tele- graph	7,000 00	X 18 F-h
Insurance (other than fire)	1,700 00	X 18 F-c
Freight and express..	1,000 00	X 18 F-i
Funeral expenses	4,000 00	X 18 F-s
Medical library sub- scription	200 00	X 18 F-j
Miscellaneous ex- penses	500 00	X 18 F-t
Clinic expenses	2,000 00	X 18 F-u
	<hr/>	
	19,750 00	
 Additions and Improvements:		
Laundry equipment ..	\$4,000 00	X 18 H-ha
Purchase and installa- tion of additional refrigeration	5,000 00	X 18 H-hb
Purchase of kitchen equipment	3,000 00	X 18 H-hc
Purchase of floor cov- ering, main and dor- mitory buildings ..	12,000 00	X 18 H-hd

Purchase of additional fire fighting fixtures and equipment	2,500 00	<i>Account No.</i> X 18 H-g
	<hr/>	26,500 00
Unclassified:		
Compensation awards	2,500 00	X 18 I
	<hr/>	
	<u>\$2,121,096 00</u>	

X 19. State Hospital, Marlboro.

For salaries and wages, and for maintenance of the State Hospital, Marlboro, on the basis of two thousand seven hundred inmates.

Salaries and Wages:

Medical director	\$5,000 00	X 19 A
Business manager and superintendent	4,760 00	X 19 D-a
Other officers and em- ployees	570,020 00	X 19 D-b
Clinic salaries	14,220 00	X 19 D-c
	<hr/>	\$594,000 00

Materials and Supplies:

Food	\$185,000 00	X 19 E-a
Clothing	32,000 00	X 19 E-b
Heat, light, power, wa- ter, gas and elec- tricity	100,000 00	X 19 E-c
F a r m , stable a n d grounds supplies	33,000 00	X 19 E-e
Household supplies	40,000 00	X 19 E-d
Medical, surgical and laboratory supplies	25,000 00	X 19 E-f
Industrial and voca- tional supplies	2,400 00	X 19 E-1
Educational, recrea- tional and library supplies	2,000 00	X 19 E-k

Stationery and office supplies	2,700 00	<i>Account No.</i> X 19 E-g
Vehicular transportation supplies	3,000 00	X 19 E-h
Clinic supplies	550 00	X 19 E-n
Other materials and supplies	2,500 00	X 19 E-o
Replacement of kitchen equipment .	2,000 00	X 19 E-qa
Replacement of air blower (sewage) ..	2,000 00	X 19 E-qb
	<u>432,150 00</u>	
Current repairs	30,000 00	X 19 G
Services Other Than Personal:		
Traveling expenses ..	\$800 00	X 19 F-a
Postage	1,500 00	X 19 F-d
Insurance (other than fire)	1,450 00	X 19 F-c
Telephone and telegraph	3,400 00	X 19 F-h
Funeral expenses ...	400 00	X 19 F-s
Freight and express..	400 00	X 19 F-i
Miscellaneous expenses	550 00	X 19 F-t
Clinic expenses	450 00	X 19 F-u
	<u>8,950 00</u>	
Additions and Improvements:		
Purchase of cannery equipment	\$1,050 00	X 19 H-ha
Purchase and installation of additional refrigeration	3,600 00	X 19 H-hb
Elevator in service building	4,000 00	X 19 H-c
	<u>8,650 00</u>	
Unclassified Expenditures:		
Compensation award—Charles B. Lanning	1,040 00	X 19 I
	<u>\$1,074,790 00</u>	

X 20. State Hospital, Trenton.

For salaries and wages, and for maintenance of the State Hospital, Trenton, on the basis of three thousand inmates.

Salaries and Wages:		<i>Account No.</i>
Medical director	\$6,000 00	X 20 A
Warden	5,000 00	X 20 D-a
Other officers and employees	837,379 00	X 20 D-b
In lieu of maintenance of eleven physicians and their families ..	16,134 00	X 20 D-c
Religious services ...	700 00	X 20 D-d
Clinic salaries	33,856 00	X 20 D-e
	<hr/>	
	\$899,069 00	
 Materials and Supplies:		
Food	\$218,500 00	X 20 E-a
Clothing	33,000 00	X 20 E-b
Heat, light, power, water, gas and electricity	128,000 00	X 20 E-c
Household supplies ..	46,000 00	X 20 E-da
F a r m , stable and grounds supplies ..	41,000 00	X 20 E-e
Medical and surgical supplies	35,000 00	X 20 E-f
Stationery and office supplies	3,500 00	X 20 E-g
Vehicular transportation supplies	3,500 00	X 20 E-h
Industrial and vocational supplies	5,000 00	X 20 E-l
Other materials and supplies	4,000 00	X 20 E-o
Clinic supplies	2,050 00	X 20 E-na
Replacement of electric therapy equipment	3,500 00	X 20 E-nb

Office equipment re- placement	500 00		<i>Account No.</i> X 20 E-i
Replacement of house- hold plastic or china	2,500 00		X 20 E-db
	<hr/>	526,050 00	
Current repairs		36,000 00	X 20 G
Services Other Than Personal:			
Traveling expenses ..	\$2,000 00		X 20 F-a
Telephone and tele- graph	4,300 00		X 20 F-h
Postage	1,000 00		X 20 F-d
Entertainment ex- penses	500 00		X 20 F-n
Funeral expenses	800 00		X 20 F-s
Newspapers and maga- zines	200 00		X 20 F-j
Insurance (other than fire)	1,272 00		X 20 F-c
Freight and express..	125 00		X 20 F-i
Cemetery upkeep	300 00		X 20 F-ua
Miscellaneous ex- penses	350 00		X 20 F-t
Clinic expenses	550 00		X 20 F-ub
	<hr/>	11,397 00	
		<hr/>	
		\$1,472,516 00	
		<hr/> <hr/>	

X 21. State Prison.

For salaries and wages, and for main-
tenance of the State Prison on the
basis of one thousand two hundred
inmates.

Salaries and Wages:

Principal keeper	\$6,000 00	X 21 A
Director of industries	6,000 00	X 21 D-a
Other officers and em- ployees	365,713 28	X 21 D-b

Wages for inmates at prison (other than State use)	10,000 00	<i>Account No.</i> X 21 D-c
Medical, surgical and dental fees	1,800 00	X 21 D-d
Religious services ...	5,640 00	X 21 D-e
	<hr/>	\$395,153 28
Materials and Supplies:		
Food	\$80,000 00	X 21 E-a
Clothing	27,500 00	X 21 E-b
Heat, light, power, water, gas and elec- tricity	46,000 00	X 21 E-c
Household supplies ..	12,500 00	X 21 E-d
Ground supplies	100 00	X 21 E-e
Medical, surgical and laboratory supplies.	5,000 00	X 21 E-f
Stationery and office supplies	1,750 00	X 21 E-g
Educational, recrea- tional and library supplies	1,850 00	X 21 E-k
Vehicular transporta- tion supplies	1,000 00	X 21 E-h
Industrial and voca- tional supplies	150 00	X 21 E-l
Photographing, blue- printing and draft- ing supplies	600 00	X 21 E-j
Other materials and supplies	1,000 00	X 21 E-o
Office equipment re- placement	350 00	X 21 E-i
Protective equipment replacement	500 00	X 21 E-q
	<hr/>	178,300 00
Current repairs	14,000 00	X 21 G

Services Other Than Personal:

		<i>Account No.</i>
Traveling expenses (including returning runaways)	\$1,000 00	X 21 F-a
Postage	500 00	X 21 F-d
Telephone and tele- graph	1,700 00	X 21 F-h
Insurance (other than fire)	800 00	X 21 F-c
Electrocution plant ..	800 00	X 21 F-ua
Payments to dis- charged inmates ...	1,500 00	X 21 F-ub
Funeral expenses	200 00	X 21 F-s
Miscellaneous ex- penses	400 00	X 21 F-t
	<hr/>	
		6,900 00

Unclassified:

Compensation award to Mrs. Butcher	671 02	X 21 I
	<hr/>	
		\$595,024 30
		<hr/> <hr/>

X 22. State Prison Farm, Bordentown.

For salaries and wages, and for main-
tenance of the State Prison Farm,
Bordentown, on the basis of six
hundred inmates.

Salaries and Wages:

Superintendent	\$4,000 00	X 22 A
Chief deputy	2,740 00	X 22 D-a
Medical, surgical and dental fees	500 00	X 22 D-b
Custodial officers and other employees ...	164,808 31	X 22 D-c
Inmates' wages	7,500 00	X 22 D-d
	<hr/>	
		\$179,548 31

Materials and Supplies:		<i>Account No.</i>
Food	\$39,000 00	X 22 E-a
Clothing	13,750 00	X 22 E-b
Heat, light, power, water, gas and elec- tricity	18,500 00	X 22 E-c
Household supplies ..	5,500 00	X 22 E-d
Farm, stable and grounds supplies ..	20,000 00	X 22 E-e
Vehicular transporta- tion supplies	850 00	X 22 E-h
Stationery and office supplies	550 00	X 22 E-g
Office equipment re- placement	100 00	X 22 E-i
Educational, recrea- tional and library supplies	550 00	X 22 E-k
Tobacco and other ma- terials and supplies.	150 00	X 22 E-o
Painting—water tank and tower	500 00	X 22 E-q
	<hr/>	
	99,450 00	
Current repairs	5,500 00	X 22 G
 Services Other Than Personal:		
Telephone and tele- graph	\$850 00	X 22 F-h
Insurance (other than fire)	200 00	X 22 F-c
Postage	150 00	X 22 F-d
Miscellaneous ex- penses	100 00	X 22 F-t
	<hr/>	
	1,300 00	
	<hr/>	
	\$285,798 31	
	<hr/> <hr/>	

X 23. State Prison Farm, Leesburg.

For salaries and wages, and for maintenance of the State Prison Farm, Leesburg, on the basis of two hundred and fifty inmates.

		<i>Account No.</i>
Salaries and Wages:		
Superintendent	\$3,000 00	X 23 A
Other officers and employees	62,520 00	X 23 D-a
Wages for inmates...	3,000 00	X 23 D-b
Medical and surgical fees	50 00	X 23 D-c
	<hr/>	\$68,570 00
Materials and Supplies:		
Food	\$15,500 00	X 23 E-a
Clothing	6,500 00	X 23 E-b
Heat, light, power, water, gas and electricity	9,500 00	X 23 E-c
Household supplies ..	5,000 00	X 23 E-d
Farm, stable and grounds supplies ..	4,000 00	X 23 E-e
Medical, surgical and laboratory supplies.	300 00	X 23 E-f
Stationery and office supplies	450 00	X 23 E-g
Educational, recreational and library supplies	250 00	X 23 E-k
Vehicular transportation supplies	425 00	X 23 E-h
	<hr/>	41,925 00
Current repairs		2,600 00 X 23 G

Services Other Than Personal:		<i>Account No.</i>
Traveling expenses ..	\$150 00	X 23 F-a
Postage	150 00	X 23 F-d
Telephone and tele- graph	750 00	X 23 F-h
Insurance (other than fire)	300 00	X 23 F-c
Miscellaneous ex- penses	100 00	X 23 F-t
	<hr/>	
	1,450 00	
Additions and Improvements:		
New adding machine.....	225 00	X 23 H-b
	<hr/>	
	\$114,770 00	
	<hr/> <hr/>	

X 24. Village for Epileptics.

For salaries and wages, and for main-
tenance of the Village for Epileptics
on the basis of one thousand five
hundred and fifty inmates.

Salaries and Wages:		
Superintendent	\$8,000 00	X 24 A
Senior resident physi- cian	4,260 00	X 24 D-a
Steward	4,000 00	X 24 D-b
Other officers and em- ployees, present, \$297,382.00; new, \$660.00	298,042 00	X 24 D-c
Medical and surgical fees	800 00	X 24 D-d
Religious services ...	1,000 00	X 24 D-e
	<hr/>	
	\$316,102 00	

		<i>Account No.</i>
Materials and Supplies:		
Food	\$108,000 00	X 24 E-a
Clothing	12,000 00	X 24 E-b
Heat, light, power, water, gas and elec- tricity	53,800 00	X 24 E-c
Household supplies ..	28,000 00	X 24 E-d
Farm, stable and grounds supplies ..	22,000 00	X 24 E-e
Medical, surgical and laboratory supplies.	12,000 00	X 24 E-f
Stationery and office supplies	800 00	X 24 E-g
Industrial and voca- tional supplies	700 00	X 24 E-l
Educational, recrea- tional and library supplies	800 00	X 24 E-k
Vehicular transporta- tion supplies	2,700 00	X 24 E-h
Office equipment re- placement	500 00	X 24 E-i
Other materials and supplies	1,400 00	X 24 E-o
Replacement of fire hose and equipment	500 00	X 24 E-qa
Replacement of steam piping and joints...	4,000 00	X 24 E-qb
Replacement of laun- dry equipment	3,300 00	X 24 E-qc
	<hr/>	
	250,500 00	
Current repairs	18,000 00	X 24 G
Services Other Than Personal:		
Traveling expenses ..	\$1,300 00	X 24 F-a
Postage	600 00	X 24 F-d
Telephone and tele- graph	1,500 00	X 24 F-h
Insurance (other than fire)	800 00	X 24 F-c

		<i>Account No.</i>
Freight and express..	150 00	X 24 F-i
Entertainment ex- penses	500 00	X 24 F-n
Funeral expenses ...	300 00	X 24 F-s
Miscellaneous ex- penses	100 00	X 24 F-t
	5,250 00	
Additions and Improvements:		
Purchase of electrol- necphalograph	\$1,500 00	X 24 H-da
Shockproofing X-ray machine	600 00	X 24 H-db
	2,100 00	
Unclassified:		
Compensation award granted to Clarence Parker	\$640 12	X 24 I-a
Compensation award, Anne L. Gill	520 00	X 24 I-b
	1,160 12	
	\$593,112 12	

X 25. Vineland State School.

For salaries and wages, and maintenance of the Vineland State School, on the basis of one thousand five hundred and sixty inmates.

Salaries and Wages:

Superintendent	\$7,000 00	X 25 A
Physicians, executive assistants, clerks, mechanics and oth- ers, present, \$216,- 936.00; new, \$1,- 200.00	218,136 00	X 25 D-a

Medical, surgical and oculist fees	2,500 00	<i>Account No.</i> X 25 D-b
Religious services ...	500 00	X 25 D-c
	<hr/>	\$228,136 00
Materials and Supplies:		
Food	\$90,000 00	X 25 E-a
Clothing	19,250 00	X 25 E-b
Heat, light, power, wa- ter, gas and electric- ity	40,000 00	X 25 E-c
Household supplies ..	19,250 00	X 25 E-d
F a r m , stable and grounds supplies ..	24,000 00	X 25 E-e
Industrial and voca- tional supplies	1,400 00	X 25 E-l
Medical, surgical and laboratory supplies	5,500 00	X 25 E-f
Stationery and office supplies	900 00	X 25 E-g
Vehicular transporta- tion supplies	1,500 00	X 25 E-h
Educational, recrea- tional and library supplies	1,600 00	X 25 E-k
Office equipment re- placement	1,000 00	X 25 E-i
Other materials and supplies	150 00	X 25 E-o
Replacement of farm machinery	800 00	X 25 E-p
	<hr/>	205,350 00
Current repairs		13,500 00 X 25 G
Services Other Than Personal:		
Traveling expenses ..	\$1,500 00	X 25 F-a
Postage	1,000 00	X 25 F-d
Telephone and tele- graph	1,500 00	X 25 F-h
Insurance (other than fire)	575 00	X 25 F-c

Entertainment ex- penses	1,000 00	<i>Account No.</i> X 25 F-n
Funeral expenses ...	350 00	X 25 F-s
Freight and express..	200 00	X 25 F-i
	<hr/>	6,125 00
Additions and Improvements:		
Ventilation of dairy barn and Assembly Hall (completion)..	\$3,500 00	X 25 H-ca
Alteration to kitchen and storeroom ice boxes	5,000 00	X 25 H-h
	<hr/>	8,500 00
Unclassified:		
Compensation award to Randolph Cobianchi	520 00	X 25 I
	<hr/>	
	<hr/>	\$462,131 00

This institution is authorized to pay for the maintenance of any county indigent patient transferred from the institution to an institution for training of the feeble-minded, to which moneys are paid by the State pursuant to R. S. 30:4-176, whatever sum or sums is received from the counties to pay the cost of such maintenance of any said patient in the institution.

Social Security Subsidies (In Conformance
With Federal Legislation).

X 26. State Subsidy for Division of Old Age Assistance.

For the purpose of making payments
for Old Age Assistance pursuant
to chapter 7 of Title 44 of the R. S., \$3,180,000 00 *Account No.* X 26 I

The balance remaining in the appropriations for reimbursement to the counties for the State Subsidy for Old Age Assistance for the fiscal year ending June 30, 1942, together with the net balance remaining, after full payment of sums due the Federal Government, of all funds recovered under 44:7-14 R. S. during the fiscal year ending June 30, 1942, or so much thereof as may be necessary, is hereby reappropriated.

X 27. State Subsidy for Maintenance of Children Under
the Care of the Board of Children's Guardians.

For the purpose of making payments
for the maintenance of children
under the care of the Board of Children's Guardians pursuant to chapter 5 of Title 30 of the Revised Statutes\$1,824,000 00 X 27 I

The balance remaining in the appropriations for the State Subsidy for maintenance of children under the care of the State Board of Children's Guardians for the fiscal year ending June 30, 1942, together with the net balance of Federal funds pursuant to chapter 5 of Title 30 of the Revised Statutes, or so much thereof as may be necessary, is hereby reappropriated.

There is hereby appropriated to the State Board of Children's Guardians, any sums of money received heretofore by it from the several counties as the county share of assistance to children, and the board is authorized and empowered to credit said sums to the several counties prorated on the basis of the total cost of assistance in each county, said sums representing credits due said counties.

Total State Fund Appropriation . . . \$36,397,668 12

TRUST AND DEDICATED FUNDS.

State School Fund.

2. The following sums or so much thereof as may be necessary are hereby appropriated out of the income of the school fund for the purposes specified:

Free Public Schools.

For the support of free public schools \$500,000 00

Premiums and Accrued Interest.

There shall be paid from the income of the school fund such sums required to pay premiums and ac-

crued interest on bonds purchased by the trustees for the support of the public schools.

School Fund Expenses.

For necessary legal and other expenses incurred by or under the direction of the trustees for the support of public schools in the investment and protection of the school fund, and in the collection of the income thereof	3,500 00
--	----------

Refunds.

Whenever by the conversion of a lease into a grant, or by the execution of a new lease, the rental that has been paid in advance to the State for land under water under riparian lease is in excess of the amount actually accruing and owing thereunder, the same has been carried to the credit of the trustees of the school fund, the State Treasurer, upon warrant of the Comptroller, is hereby authorized and directed at any time upon application of the persons entitled to the same, to repay such excess from the income of the school fund.

\$503,500 00

3. The following sums or so much thereof as may be necessary are hereby appropriated from the free balances and dedicated and trust fund revenues as follows:

Board of Fish and Game Commissioners.

For salaries and wages, and for the expenses of maintenance and operation of the New Jersey Board of Fish and Game Commissioners to include the expenses of administration and of the fish hatchery and game farms.

All receipts from hunters' and anglers' licenses pursuant to the provisions of article 1, chapter 3 of Title 23; R. S. 23:3-3, R. S. 23:3-23 to 27.

All receipts, licenses and sales pursuant to the provisions of R. S. 52:18-31.

All fines pursuant to the provisions of R. S. 23:10-19.

All such receipts as are above set forth, and any balance of receipts that may not have been disbursed on or before the end of the fiscal year ending June thirtieth, one thousand nine hundred and forty-two, are hereby appropriated to the Board of Fish and Game Commissioners, but there may only be expended of said receipts and balance the amounts as itemized below, and for bills incurred during the fiscal year ending June thirtieth, one thousand nine hundred and forty-two, and no portion of any receipts shall lapse into the general funds of the State; *provided, however*, that an excess may be expended and is hereby appropriated above the amounts herein below indicated when expressly approved by the State House Commission, but limited to the amount of the receipts of the board for the fiscal year.

		<i>Account No.</i>
Salaries:		
Executive secretary ..	\$5,000 00	F. G.-A
Assistant secretary ..	4,000 00	F. G.-D-a
Assistant protectors, wardens, superin- tendents and other officers and em- ployees	187,580 00	F. G.-D-b
	\$196,580 00	
Materials and Supplies:		
Food for fish and game	\$60,000 00	F. G.-E-na
Clothing (uniforms) ..	1,500 00	F. G.-E-b
Heat, light, power, water, gas and elec- tricity	6,825 00	F. G.-E-c
Stationery and office supplies	1,250 00	F. G.-E-g
Vehicular transporta- tion supplies	24,500 00	F. G.-E-h
Purchase of live fish and game	35,600 00	F. G.-E-nb
Farm and stable sup- plies	5,725 00	F. G.-E-e
Other materials and supplies	300 00	F. G.-E-o
Office equipment re- placement	100 00	F. G.-E-i
	135,800 00	
Current repairs	2,500 00	F. G.-G
Services Other Than Personal:		
Printing	\$3,000 00	F. G.-F-e
Hunting and fishing li- censes and buttons.	7,000 00	F. G.-F-u
Traveling expenses ..	4,995 00	F. G.-F-a
Telephone and tele- graph	1,500 00	F. G.-F-h
Garage rent, including boat storage	2,700 00	F. G.-F-g
Postage	1,650 00	F. G.-F-d
Insurance (fire)	195 95	F. G.-F-b

Insurance (other than fire)	4,843 05	<i>Account No.</i> F. G.-F-c
Miscellaneous ex- penses	3,000 00	F. G.-F-t
	<hr/>	28,884 00

Additions and Improvements:

Building coops and pens	2,500 00	F. G.-H-c
	<hr/>	
	\$366,264 00	
	<hr/> <hr/>	

State Board of Milk Control.**Salaries:**

Director	\$10,000 00	M. B.-A
Other officers and em- ployees	72,180 00	M. B.-D
Fees (members of board)	3,600 00	M. B.-B
	<hr/>	\$85,780 00

Materials and Supplies:

Vehicular transporta- tion supplies	\$1,500 00	M. B.-E-h
Stationery and office supplies	2,500 00	M. B.-E-g
Other materials and supplies	100 00	M. B.-E-o
	<hr/>	4,100 00

Services Other Than Personal:

Traveling expenses ..	\$6,000 00	M. B.-F-a
Telephone and tele- graph	1,200 00	M. B.-F-h
Rents	6,000 00	M. B.-F-g
Printing	200 00	M. B.-F-e
Postage	2,600 00	M. B.-F-d
Miscellaneous ex- penses	2,000 00	M. B.-F-t
	<hr/>	18,000 00

Additions and Improvements:

Office furniture and equipment	\$200 00	<i>Account No.</i> M. B.-H-ba
New filing equipment.	150 00	M. B.-H-bb
	350 00	
	\$108,230 00	

Morris Canal Fund.

Salaries	\$11,270 00	M. C.-D
Materials and supplies.	770 00	M. C.-E
Current repairs	450 00	M. C.-G
Services other than per- sonal	690 00	M. C.-F
Additions and improve- ments	1,820 00	M. C.-H
	\$15,000 00	
	\$15,000 00	

Provided, however, that there shall be refunded to the State fund such amounts as have heretofore been advanced from said fund to the Morris Canal Fund whenever and to the extent that the canal funds exceed the liabilities of said fund for the balance of the fiscal year 1943.

State Forest Fund.

Silvicultural improvement of the State forests	\$16,000 00
---	-------------

State Purchase Department and State Purchase Fund.

The unexpended balance of the State Purchase Fund is hereby reappropriated, together with such sums as may be returned to the State Treasury for the reimbursement of said fund, so that a "Purchase Fund" not exceeding \$250,000.00 will be established and maintained for the purpose of making payments for purchases pursuant to the purchase act (chapter 25 of Title 52 of the R. S.), and for the expenses of handling, storing and transporting purchases so made, the cost of said purchases to be apportioned among the various using agencies and the appropriations current for their use so as to reimburse the said "Purchase Fund" for said purchases when so made; said amounts so appropriated to be credited to said fund when deposited in the State Treasury for disbursement in accordance with the provisions of said chapter 25 of Title 52 of the R. S. The above fund shall be a revolving fund and the unexpended balances and reimbursements above mentioned shall constitute said fund for the purpose of carrying out the provisions of said purchase act; *provided, however*, that any sum or sums in excess of the amount hereby appropriated received by the Purchasing Agent from any source shall by him be paid to the State Treasurer and deposited in the general fund of the State; *provided, further*, that the salaries and incidental expenses to operate said fund shall not exceed one hundred twenty-seven thousand six hundred and seventy-five dollars, divided as follows; *provided, however*, that the State House Commission, on application of the State Purchase Commissioner, may transfer to the State Purchase Fund, from time to time, moneys appropriated to any spending agency, said moneys so transferred to be returned to the funds from which they were taken during the fiscal year for which said appropriations were made; *pro-*

vided, further, on all purchases made by the State Purchase Commissioner pursuant to law, there shall be added to all purchases as a service charge a sum not exceeding two per centum, as shall be determined by the State Purchase Commissioner, which said sum, not exceeding two per centum, as so determined, shall, on certification from the State Purchase Commissioner, be transferred, on order of the Comptroller of the Treasury, by draft or certificate of the State Treasurer, from the accounts of the department, board or commission, or using agency, for whom the purchase was made, to the State Purchase Fund. The State Purchase Commissioner shall certify to the head of the department, board, commission, or using agency of the government from whose accounts a service charge has been ordered, the amount of such service charge.

On the commencement of any new State fiscal year, or at any time during said fiscal year, the State Purchase Commissioner may anticipate the purchase needs of any department, board, commission, or using agency of the government, and may charge the two per centum above provided for, or any lesser sum, based upon the purchases of any such department, board, commission, or using agency for the immediately preceding fiscal year.

The following sums, or so much thereof as may be necessary, are appropriated from the State Purchase Fund for salaries and other expenses for the operation of the department of the State Purchase Commissioner.

Salaries:

State Purchase Commissioner	\$7,000 00	<i>Account No.</i> S. P.-A
Chief clerk	5,000 00	S. P.-D-a
Compensation of assistants and clerical services and laboratory testing services	67,830 00	S. P.-D-b

Supervisors of purchases	20,520 00		<i>Account No.</i>
Labor services	1,500 00		S. P.-D-c
	<hr/>	\$101,850 00	S. P.-D-d
Materials and Supplies:			
Vehicular transportation supplies	\$2,750 00		S. P.-E-h
Stationery and office supplies	5,800 00		S. P.-E-g
Office equipment	1,300 00		S. P.-E-i
Fuel, light and power, water rent	3,500 00		S. P.-E-c
Household supplies ..	250 00		S. P.-E-d
Laboratory testing supplies	200 00		S. P.-E-f
Replacement of truck	2,500 00		S. P.-E-m
	<hr/>	16,300 00	
Current repairs		1,000 00	S. P.-G
Services Other Than Personal:			
Traveling expenses ..	\$740 00		S. P.-F-a
Advertising	4,000 00		S. P.-F-f
Subscriptions	300 00		S. P.-F-j
Insurance (other than fire)	2,435 00		S. P.-F-c
Freight, express and cartage	50 00		S. P.-F-i
Miscellaneous expenses	1,000 00		S. P.-F-t
	<hr/>	8,525 00	
		<hr/>	
		<u>\$127,675 00</u>	

Public Shooting and Fishing Grounds Fund.

		<i>Account No.</i>
Salaries	\$23,700 00	P. S.-D
Materials and supplies	35,925 00	P. S.-E
Current repairs	350 00	P. S.-G
Services other than personal	4,550 00	P. S.-F
Additions and improvements	700 00	P. S.-H
New buildings and land	14,775 00	P. S.-H-c
State's contribution pursuant to chap- ter 157, laws of 1938	20,000 00	P. S.-I
	<hr/>	
	\$100,000 00	
	<hr/> <hr/>	

4. No money shall be drawn from the treasury except for objects as hereinabove specifically appropriated, and except such sums as may be required to refund amounts credited to the State Treasurer which do not represent State revenues, and except such sums which are by law devoted to specific purposes, namely, State school tax, Department of Agriculture receipts pursuant to R. S. 4:10-9, United States appropriation to Agricultural College, taxes for the use of taxing districts in this State, Grade Crossing Elimination Fund, appropriated Emergency Relief and Municipal Aid Funds, Forest Fire Fund, Forest Nursery Fund, Forest Land Fund, Workmen's Compensation Tax Fund, Educational Aid Fund, moneys directed by any law to be paid to the Teachers' Pension and Annuity Fund, 1837 Surplus Revenue Fund income, State Police Retirement Fund, Clerk in Chancery Enrollment Fund, unclaimed accounts of patients and prisoners in State institutions, Unemployment Compensation Commission, Compensation awards, Billboard Regulation Fund, moneys received by the several institutions representing garage rentals which moneys shall be devoted exclusively by such institution to erection of new garages where needed, Vocational Schools, Crippled Children's Commission, High Point Park

Commission, Palisades Interstate Park Commission, Federal funds subsidizing the State under the Social Security Act, and such other Federal funds used to match State appropriations in P.W.A. and W.P.A. projects, moneys received from tuition for extension in summer school courses, which last named moneys shall be paid pursuant to the laws applicable thereto; moneys received representing insurance to cover losses by fire and other casualties; this section shall not be construed to prohibit the payment due upon any contract made under an appropriation of previous years; moneys received by the Department of Conservation and Development from the sale or lease of forest reserve lands pursuant to R. S. 13:8-9; moneys received by the Quartermaster-General under the provisions of article 3, chapter 2-38 of R. S.; nor shall this act apply to moneys appropriated by joint resolution of the Legislature where such moneys have been set apart by the State Comptroller.

5. In order that some degree of flexibility in appropriations may be had, any department or other State agency receiving an appropriation by any act of the Legislature may apply to the State House Commission for leave to transfer a part of any item granted to such department or agency to any other item in such appropriation. Such application shall only be made during the current year for which the appropriation was made, and if the State House Commission shall consent thereto, it shall notify the Comptroller thereof in writing, whereupon the Comptroller shall place the amount so transferred to the credit of the item so designated; *provided, however*, that no sum appropriated for any permanent improvement shall be used for maintenance or for any temporary purpose.

6. The Comptroller of the Treasury is hereby authorized, empowered, directed, and it shall be his duty to make such correction of the title or text, or both, of an appropriation, necessary to make such appropriation available for the purpose or

purposes of its intention. Such correction shall be by written ruling, reciting in appropriate details the facts thereof, and the reasons therefor, attested by the signature of said Comptroller and filed in the Department of the Comptroller of the Treasury as an official record thereof, and any action thereunder, including disbursements and the audit thereof, shall be legally binding and of full force and virtue.

7. The Comptroller of the Treasury is hereby empowered, and it shall be his duty in the disbursement of funds available for the general uses of this State, to first provide for the maintenance of the administration of the government of the State, and of its courts, and of its penal, correctional and charitable institutions, and to apply the remainder of such available funds in such manner and to such purpose for which appropriations may have been made as in his judgment may best conserve the interest of the State.

8. The State House Commission is hereby empowered, notwithstanding any other provision of the law, to transfer from the various appropriations for construction, reconstruction, additions to and betterments of State building and appurtenances thereto, herein contained, to the appropriation for the division of architecture and construction of the Department of Institutions and Agencies a sufficient sum to pay for the cost of all architectural work, superintendence and other expert services in connection with such work.

9. The Comptroller of the Treasury may, upon application therefor, allot from appropriations made to any official, department, commission or board a sum, not in excess of three hundred dollars (\$300.00), to establish a petty cash fund, for the payment of expenses not in excess of ten dollars (\$10.00). The allotments thus made by the Comptroller shall be paid to such person as shall be designated as the custodian thereof by the official, department, commission or board making request therefor, and the money thus allotted shall be dis-

bursed by such custodian, who shall require from all persons obtaining money from said fund a receipt therefor. Such receipts shall by such custodian be forwarded monthly to the Comptroller of the Treasury for audit, and the Comptroller of the Treasury shall likewise make regulations governing disbursements from petty cash funds.

10. The Comptroller of the Treasury is hereby empowered, and it shall be his duty in the disbursement of funds appropriated for the maintenance and operation of any department or branch thereof, the duties or responsibilities of which are or may hereafter be transferred to any other department, to transfer such appropriations to such department as shall be charged with the responsibility of administering the functions of such department so transferred as aforesaid.

11. This act shall take effect on the first day of July, one thousand nine hundred and forty-two.

Approved March 30, 1942.

STATE HIGHWAY AND OTHER
RELATED DEPARTMENTS

CHAPTER 46, LAWS OF 1942

AN ACT making appropriations from the State Highway Fund for the maintenance and operation of the State Highway and other related departments, pursuant to the provisions of section 52:22-20 of the Revised Statutes.

ANTICIPATED REVENUES OF THE STATE HIGHWAY
FUND

Tax on motor fuels	\$19,700,000 00
Motor vehicle fees, fines, et cetera ..	18,500,000 00
Motor vehicle inspection fees	900,000 00
Bus excise tax	110,000 00
Federal aid	1,650,000 00
Miscellaneous revenue	300,000 00
Unappropriated balance, January 1st	2,672,250 00
	\$43,832,250 00

Less:

Amount to be transferred to State Fund for Municipal Aid, pursuant to Senate Bill No. 167 of this session of the Legislature	\$3,000,000 00
--	----------------

Account No.
R 12 I

Amount to be transferred to State Fund for General Purposes, pursuant to Senate Bill No. 149 of this session of the Legislature..	4,260,000 00	<i>Account No.</i> R 14 I
Amount transferred to State Fund for New Jersey State Guard, pursuant to Chapter 13, Laws of 1942 ..	275,000 00	R 20 I
	<u>7,535,000 00</u>	
Total revenues and balance available for expenditure..	<u>\$36,297,250 00</u>	

BE IT ENACTED *by the Senate and General Assembly of the State of New Jersey:*

1. The following sums, or so much thereof as may be necessary, be and they are hereby appropriated out of the State highway fund for the several purposes herein specified.

Debt Service.

Mandatory Dedications:

1930 Bond Act:

Principal requirement of highway improvement bonds ..	\$780,000 00	R 1 A
Interest, highway improvement bonds ..	1,312,175 00	R 1 B
Principal requirement of institution construction bonds	200,000 00	R 1 C
Interest, institution construction bonds.	326,475 00	R 1 D

Principal requirement of emergency relief bonds	1,250,000 00	<i>Account No.</i> R 1 E
Interest, emergency relief bonds	21,875 00	R 1 F
<hr/>		
Total debt service on 1930 bond act	\$3,890,525 00	
Interest on \$70,000,000.00 issue:		
Annual requirement for amortization ...	\$1,640,073 80	R 2 A
Interest on road bonds	320,000 00	R 2 B
Interest on roads, bridges and viaducts bonds	1,225,000 00	R 2 C
<hr/>		
	3,185,073 80	
<hr/>		
Total debt service	\$7,075,598 80	

Construction and Maintenance of Roads and Bridges.

Mandatory Dedications:

State Aid to Counties and Municipalities.

Construction, recon- struction, mainte- nance, et cetera, of county roads	\$6,000,000 00	R 3 A
Expenditures pursu- ant to section 27:14-1 of the Re- vised Statutes	735,000 00	R 3 C
Construction, grading, maintenance, et cet- era, of village and township roads	2,625,000 00	R 3 B

Expenditures pursuant to section 27:15-10 of the Revised Statutes and Chapter 218, Laws of 1940	525,000 00	<i>Account No.</i> R 3 D
<hr/>		
Total State aid to counties and municipalities	\$9,885,000 00	
<hr/>		
Total Mandatory Deductions, \$16,960,598 80		

State Highway Commissioner.

Appropriation:

Administration, engineering, inspection and administration costs of rights-of-way	\$2,226,000 00	R 8 A
Construction of State highway system, purchase of rights-of-way, construction of roads, bridges and grade crossings pursuant to section 52:22-20 of the Revised Statutes:		
State Funds	3,791,343 07	R 8 B-C-E
Federal aid and State matched moneys	3,500,000 00	R 8 B-C-E
Purchase of plant and equipment	200,000 00	R 8 D
State, county and municipal highway lighting, traffic signals and operation of bridges	1,280,500 00	R 8 F

Maintenance of State highway system ...	3,539,000 00	<i>Account No.</i> R 8 F
Institutional roads and approaches, includ- ing walks and gut- ters	200,000 00	R 8 F

Claims:

George M. Brewster & Son, Inc.	\$12,337 00	
George W. Gascoin..	1,900 00	
Emil Alpen	31 01	
Tidewater Stone and Supply Co.	45,860 40	
Santaniello Bros. ...	32,000 00	
Samuel Colacurcio, Inc.	5,211 20	
	<u>97,339 61</u>	R 8 L

Total amount appropriated ..\$14,834,182 68

Motor Vehicle Department.**Salaries:**

Commissioner	\$10,000 00	R 7 A
Other employees, pres- ent, \$1,265,938.10; new, \$19,440.00 ...	1,285,378 10	R 7 D
	<u>\$1,295,378 10</u>	

Materials and Supplies:

Heat, Light, Power, Water, Gas and Elec- tricity	\$11,500 00	R 7 E-c
Motor Vehicular trans- portation supplies .	59,500 00	R 7 E-h

Replacements of Motor Vehicles	18,700 00	<i>Account No.</i> R 7 E-m
Stationery and office supplies	52,500 00	R 7 Eg
Office equipment, replacement	5,000 00	R 7 E-ib
Purchase of typewriters, Central Office..	1,000 00	R 7 E-ic
Testing machinery and equipment	2,000 00	R 7 E-nb
Purchase of typewriters (Agents)	7,800 00	R 7 E-ia
Station and Central Office equipment ..	2,000 00	R 7 E-id
Metal and material for markers	220,000 00	R 7 E-na
Station cleanser, oil and grease	1,000 00	R 7 E-nc
	<hr/>	
	381,000 00	
Current Repairs	10,000 00	R 7 G
Services Other Than Personal:		
Traveling expenses ..	\$2,650 00	R 7 F-a
Telephone and telegraph	10,800 00	R 7 F-h
Rents	115,030 00	R 7 F-g
Insurance (other than fire)	5,400 00	R 7 F-c
Freight, express and cartage	1,500 00	R 7 F-i
Subscriptions	200 00	R 7 F-j
Printing, binding, photographing and blueprinting	43,000 00	R 7 F-e
Postage	53,000 00	R 7 F-d
Miscellaneous expenses	4,750 00	R 7 F-ta
Addressing postal notices, test stations	17,000 00	R 7 F-u
Witness fees	2,750 00	R 7 F-l
Safety education	15,000 00	R 7 F-tb
	<hr/>	
	271,080 00	

Additions and Improvements:

		<i>Account No.</i>
Filing cabinets	\$5,850 00	R 7 H-ba
Ventilation equipment, testing stations ...	3,000 00	R 7 H-c
Multilith and certifi- cate numbering ma- chines	5,500 00	R 7 H-bb
	<u>14,350 00</u>	

Extraordinary Expenditures:

To install receiving sets in 85 motor vehicle inspectors' cars for the purpose of a one-way police radio communication system	16,800 00	R 7 H-a
	<u>\$1,988,608 10</u>	

State Tax Department.**Motor Fuels Tax Division.****Salaries:**

Director	\$6,000 00	R 9 A
Compensation for as- sistants	176,560 00	R 9 D
	<u>\$182,560 00</u>	

Materials and Supplies:

Stationery and office supplies	\$1,500 00	R 9 E-g
Retail dealers' license plates	1,700 00	R 9 E-o
Vehicular transporta- tion supplies	10,000 00	R 9 E-h
Office equipment re- placement	350 00	R 9 E-i
	<u>13,550 00</u>	

Services Other Than Personal:

		<i>Account No.</i>
Postage and express- age	\$3,000 00	R 9 F-d
Miscellaneous ex- penses	400 00	R 9 F-t
Traveling expenses ..	5,000 00	R 9 F-a
Printing, binding, pho- tographing and blue- printing	1,800 00	R 9 F-e
Patrol boat crew ex- penses	1,600 00	R 9 F-ua
Maintenance of patrol boat	2,500 00	R 9 F-ub
Rents	10,860 00	R 9 F-g
Insurance (other than fire)	2,925 00	R 9 F-c
Insurance (fire)	200 00	R 9 F-b
Telephone and tele- graph	1,200 00	R 9 F-h
	<hr/>	
		29,485 00

Additions and Improvements:

Office equipment	700 00	R 9 H-b
------------------------	--------	---------

Unclassified:

The Comptroller of the Treasury is hereby authorized and empowered to pay any refund of motor fuel taxes, upon proper approval, pursuant to chapter 39 of Title 54 of the Revised Statutes, and the State Treasurer is directed to pay warrants issued therefor by the Comptroller.

R 11 R

\$226,295 00

Board of Commerce and Navigation.

Expenditure for construction, reconstruction, maintenance and improvement of inland waterways	\$135,000 00	<i>Account No.</i> R 4 I
Expenditure for bulkheading Manasquan Canal	50,000 00	R 4 L
Dredging inland waterways	65,000 00	R 4 M
Beach protection along Atlantic coast, provided thirty per centum (30%) is appropriated in conjunction thereto by each municipality allotted a part of the State appropriation for new projects; <i>provided, however,</i> the Board of Commerce and Navigation may use out of this appropriation a sum not to exceed \$150,000.00 for protection and maintenance of projects already constructed, and toward which the municipality has contributed in the past two years their allotted share as provided for in the appropriated items for beach erosion without any further appropriation in conjunction thereto by the municipality	395,000 00	R 4 J
	<hr/>	\$645,000 00

Delaware River Joint Toll Bridge Commission.

Appropriation:

Maintenance of free bridges now or to become State property, in- cluding improvements	<i>Account No.</i> \$135,779 00 R 5 J
---	---

All moneys received from any source whatsoever, whether from the operation of bridges or from the State of Pennsylvania for its proportion of maintenance of said bridges, is hereby appropriated to the said commission to be used by them for maintenance of bridges and the payment to the State of Pennsylvania of their proportion of the earnings of said bridges.

Any unexpended balance, including receipts from Pennsylvania and rental receipts, is hereby re-appropriated.

Department of State Police.

There is hereby appropriated for transfer to the General State Fund, being 50% of the amount appropriated in the State Fund Appropriation Act for the fiscal year ending June 30, 1943, for the operation and maintenance of the Department of State Police, the sum of .. \$701,981 42 **R 15 I**

State Employees' Retirement System.

Contribution applicable to State Highway System Fund	\$139,755 00 R 16 I
---	----------------------------

**Department of Conservation and Development
Delaware and Raritan Canal Maintenance.**

Expenses necessary to maintain the bridges over the Delaware and Raritan Canal	\$13,000 00	<i>Account No.</i> R 17 I
--	-------------	------------------------------

Budget Department

Transfer to the General State Fund for salary of the State Budget Commissioner	\$3,000 00	R 18 I
--	------------	--------

Comptroller's Department

Transfer to the General State Fund for salaries in the State Comp- troller's Department	\$3,000 00	R 19 I
---	------------	--------

State House Commission

Transfer to the General State Fund for maintenance expenditures of the State House Commission	\$20,000 00	R 21 I
---	-------------	--------

Compensation Awards

For the State House Commission to pay compensation awards allowed State employees in departments other than the State Highway De- partment but related to the State Highway Fund	\$5,000 00	R 22 I
---	------------	--------

Funding-Bonds Authorized But Not Issued

For the purpose of funding the re- maining \$11,799,950.00 of bonds authorized by R. S. 27:11-9 to 11, but which have not been issued ...	\$621,050 00	R 23 I
--	--------------	--------

Total mandatory dedications and appropriations	\$36,297,250 00	
---	-----------------	--

2. The appropriations herein made other than those to the State Highway Commissioner are for the fiscal year ending December thirty-first, one thousand nine hundred and forty-two, and the appropriations herein made for debt service and to the State Highway Commissioner shall not lapse by reason of the expiration of said fiscal year. The appropriations herein made other than those for debt service and to the State Highway Commissioner shall be available for expenditure during the fiscal year ending December thirty-first, one thousand nine hundred and forty-two, and for a period of two months thereafter to pay obligations incurred during said fiscal year only. Nothing in this section or in this act contained shall be construed to prohibit the payment due upon any contract made under an appropriation of the previous year or years.

3. Any additional allotments of funds which may be made by the Federal government to the State of New Jersey, are hereby appropriated for the purposes for which such moneys are allocated, and the State Highway Commissioner is hereby authorized to carry out such projects as may be designated by the Federal government.

4. No money shall be drawn from the State Highway System Fund except for objects as hereinabove specifically appropriated and except such sums as may be required to refund amounts credited to the State Highway System Fund which do not represent State revenues, and except such sums which are by law devoted to specific purposes, namely, the administration expenses of the Retail Motor Fuel Dealers' Control Division of the State Tax Department established pursuant to chapter one hundred sixty-three of the laws of one thousand nine hundred and thirty-eight.

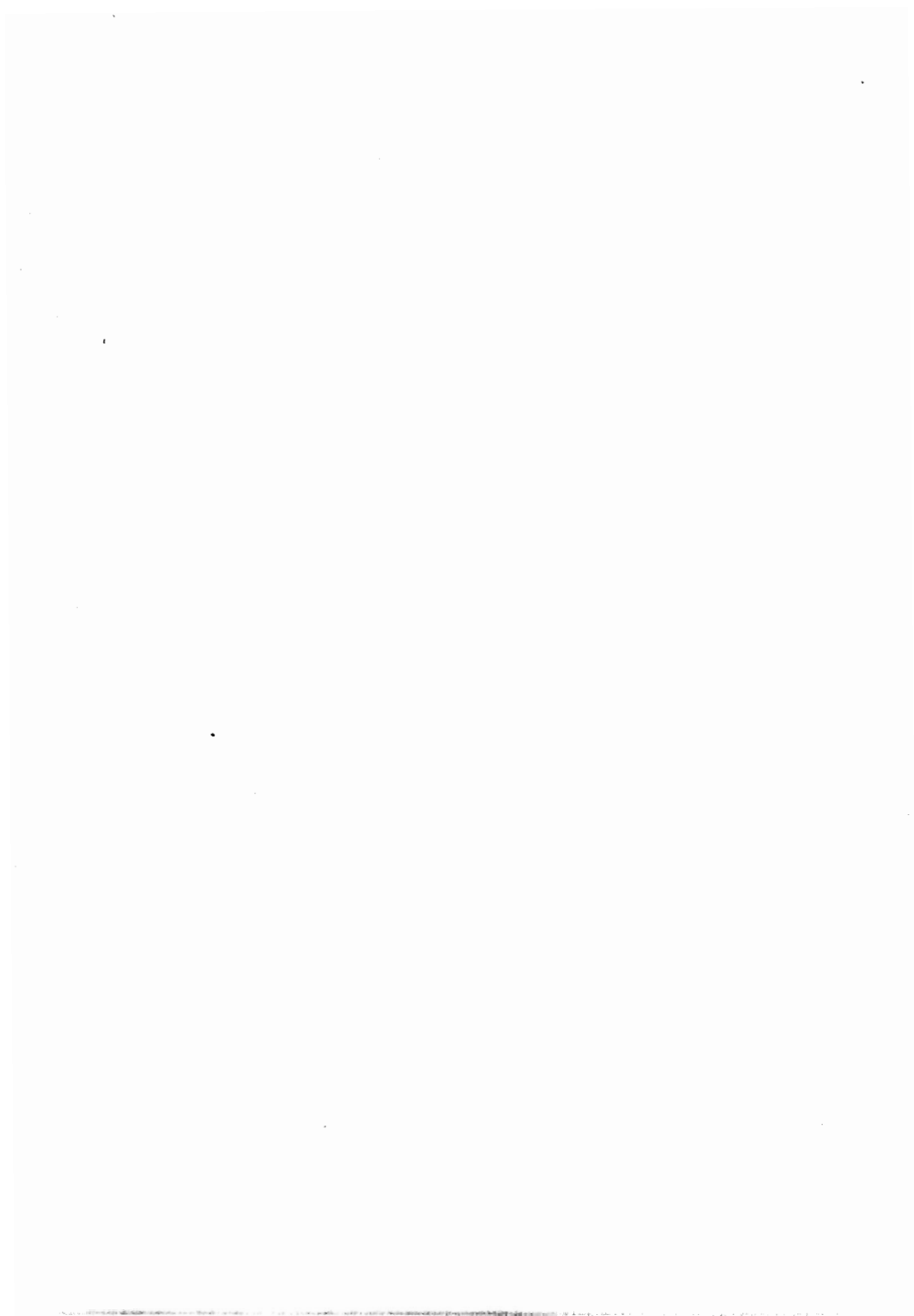
5. The State Highway Commissioner is authorized to co-operate with Public Roads Administration, Works Progress Administration, Corps of Engineers, Public Work Reserve, United States Army, United States Navy, War Production Board,

Office of Civilian Defense, and any other Federal agency that may be established in order to assist in war efforts and for that purpose he is authorized to use any available personnel or facilities of the State Highway Department.

6. All revenues in excess of anticipated revenues shall constitute a war emergency fund subject to legislative appropriation.

7. This act shall take effect immediately and shall be retroactive as of January first, one thousand nine hundred and forty-two, and all expenditures made up to the time of the passage of this act, under the provisions of section 52:22-20 of the Revised Statutes, shall be charged against the amounts herein appropriated.

Approved April 20, 1942.



Index to Appropriation Groups and Items

- A—EXECUTIVE
- B—LEGISLATIVE
- C—JUDICIAL
- D—REGULATIVE
- E—EDUCATIONAL
- F—AGRICULTURAL
- G—MILITARY
- H—PENSIONS AND RETIREMENT
- J—CONSTRUCTIVE
- K—GENERAL
- L—STATE EMERGENCY FUND, FIRE INSURANCE AND DEBT
- X—DEPT. OF INSTITUTIONS AND AGENCIES, AND STATE INSTITUTIONS

<i>Department, Institution, Board or Commission</i>	<i>Acct. No.</i>	<i>Page.</i>
Adjutant-General's Department,	G 1	83
Agricultural Experiment Station,	F 1	79
Annuity for Widows of Governors,	H 4	91
Attorney-General's Department,	A 1	9
Board of Barber Examiners,	D 21	59
Commerce and Navigation,	D 1	29
Commerce and Navigation, State Highway Fund,	R 4	167
Fish and Game Commissioners,		148
Public Shooting and Fishing Grounds Fund,		155
Public Utility Commissioners,	D 3	31
Shell Fisheries,	D 4	32
Budget Commission,	A 2	11
Burial Grounds,	K 1	93
Civil Service Commission,	A 3	11
Clerk in Chancery,	C 1	24
of Supreme Court,	C 2	24
Colony for Feeble-Minded Males, New Lisbon,	X 2	107
Woodbine,	X 3	109
Commission for the Blind,	X 4	111
on Interstate Co-operation,	D 2	31
on Statutes,	C 6	27
to Investigate Crippled Children,	K 4	96

<i>Department, Institution, Board or Commission</i>	<i>Acct. No.</i>	<i>Page.</i>
Commission to Mark Historic Sites,	K 12	101
Commissioner of Education,	E 2	61
of Finance,	A 5	13
Commissioners of Palisades Interstate Park,	K 3	95
of High Point Park,	K 2	94
Comptroller's Department,	A 4	12
County Boards of Taxation,	D 5	34
Insane Hospitals,	X 5	112
Superintendents,	E 3	63
Tuberculosis Hospitals,	X 6	113
Court of Chancery,	C 3	25
Errors and Appeals,	C 4	26
Pardons,	C 5	27
Department of Agriculture,	F 2	82
Alcoholic Beverage Control,	D 19	57
Aviation,	D 18	56
Banking and Insurance,	D 6	34
Conservation and Development,	D 7	35
Health,	D 8	38
Labor,	D 9	42
State Police,	D 15	48
State Police, Highway Fund,	R 15	168
Weights and Measures,	D 10	44
Debt Service,	L 3	102
Debt Service, State Highway Commission,	R 1	160
Delaware and Raritan Canal Bridge Maintenance,	R 18	169
Delaware River Joint Toll Bridge Commission,	R 5	168
Emergency Fund,	E 6	64
Emergency Conservation Corps Selection,	X 28	
Evening Schools for Foreign-Born Residents,	E 4	63
Executive Department,	A 7	15
Feeble-Minded,	X 7	128
Fire Insurance,	L 2	102
Grover Cleveland Birth Place Association,	K 13	101
Health Officers, Port of Perth Amboy,	D 11	45
Home for Disabled Soldiers, Menlo Park,	X 8	114
Vineland,	X 9	115
Interstate Sanitation Commission,	D 22	60
Industrial Education,	E 5	63
Interest on Bonds,	R 2	161
Institutions and Agencies,	X 1	103
Judicial Retirement Fund,	H 1	89
Law and Equity Reports,	C 7	28
Legislature,	B 1	23

<i>Department, Institution, Board or Commission</i>	<i>Acct. No.</i>	<i>Page</i>
Manual Training and Industrial School for Colored Youth,	E 6	64
Morris Canal Account,		151
Motor Vehicle Department,	R 7	163
Motor Fuels Tax Account,	R 9	165
National Guard and/or State Guard,	G 2	85
Naval Militia,	G 3	88
New Jersey Veterans of All Wars Memorial Association,	K 10	99
New Jersey Training School, Totowa,	X 10	117
Old Barracks Association,	K 5	96
Pensions,	H 2	90
Port Raritan District Commission,	J 1	91
Public Library Commission,	K 6	96
Public Shooting and Fishing Grounds Funds,		155
Quartermaster-General's Department,	G 4	89
Real Estate Commission,	D 14	47
Reformatory, Annandale,	X 11	118
Rahway,	X 12	120
for Women, Clinton,	X 13	121
Refund of Railroad Tax,	K 9	99
on Motor Fuel Tax,	R 11	166
Rehabilitation Commission,	K 8	98
Sanatorium for Tuberculous Diseases,	X 14	123
School for the Deaf,	E 7	65
Secretary of State,	A 8	16
for Defense,	A 16	23
South Jersey Port Commission,	J 2	92
Transit Authority,	J 5	93
State Aid to Counties and Municipalities,	R 3	161
Athletic Commissioner,	A 13	21
Auditor's Department,	A 9	17
Defense Council,	A 15	23
Board of Beauty Culture Control,	D 20	58
Children's Guardians,	X 15	125
Education,	E 8	67
Examiners,	E 9	67
Mediation,	K 14	101
Milk Control, Special Act,		150
Regents (State Agricultural College),	E 1	61
Tax Appeals,	D 12	45
Tenement House Supervision,	D 13	46
Department of Local Government,	A 14	22
Emergency Fund,	L 1	101
Employees' Retirement System,	H 3	90

<i>Department, Institution, Board or Commission</i>	<i>Acct. No.</i>	<i>Page.</i>
State Employees' Retirement System, State Highway Commission,	R 16	168
Highway Commissioner,	R 8	162
Home for Boys,	X 16	126
Girls,	X 17	128
Hospital, Greystone Park,	X 18	130
Marlboro,	X 19	132
Trenton,	X 20	134
House Commission,	A 10	18
Housing Authority,	J 3	92
Library Commission,	K 11	100
Planning Board, Special Act,	J 4	93
Prison,	X 21	135
Prison Farm, Bordentown,	X 22	137
Leesburg,	X 23	139
Purchasing Department,	A 12	21
Racing Commission,	D 23	60
Soil Conservation Committee,	F 3	83
Subsidy for Division of Old Age Assistance,	X 26	145
Subsidy for Maintenance of Children's Guardians,	X 27	145
Tax Department,	D 17	53
Teachers College, Glassboro,	E 10	68
Jersey City,	E 11	69
Newark,	E 12	71
Paterson,	E 13	73
Montclair,	E 14	74
Trenton,	E 15	76
Water Policy Commission,	D 16	51
Stenographic Reporters,	C 8	28
Supreme Court,	C 9	28
Teachers' Libraries,	E 16	78
Pension and Annuity Fund,	E 19	79
Retirement Fund, Pension and Annuity Fund,	E 17	78
Treasurer's Department,	A 11	20
Unclaimed Wages,	K 7	97
Vocational Schools,	E 18	78
Vineland State School,	X 25	142
Village for Epileptics,	X 24	140

HOMER C. ZINK,
Comptroller of the Treasury.

July 1, 1942.

