

October 2003 Monthly Report

Introduction

In October, the Schools Construction Corporation continued to mark successes in bringing Schools of the 21st Century to districts all over the State of New Jersey. The SCC launched designations for 6 Demonstration Projects, held an open house for its Trenton office and issued notices to proceed for projects totaling over \$32.5 million.

The SCC processed disbursements totaling over \$170 Million, with \$90 million in construction contract disbursements alone. This is over \$67 million higher than the Corporation's previous high in July 2003. The SCC also marked another record month for Section 15 Grant Disbursements in October. In October, SCC staff processed \$38.5 million in grants for districts that receive less than 55% of their funding in state aid, eclipsing the previous monthly peak of \$35.3 million in June 2002.

1. [Six SCC Demonstration Projects Receive Preliminary State Approval](#)
2. [Manchester Township High School, Middle School & Whiting Elementary School Groundbreakings](#)
3. [Neptune Township High School & Green Grove Elementary School Groundbreakings](#)
4. [Construction Update](#)
5. [Contractor Procurement](#)
6. [Design Update](#)
7. [Predevelopment & Land Acquisition](#)
8. [School District Grants](#)
9. [Conferences/Presentations](#)

I. Six SCC Demonstration Projects Receive Preliminary State Approval

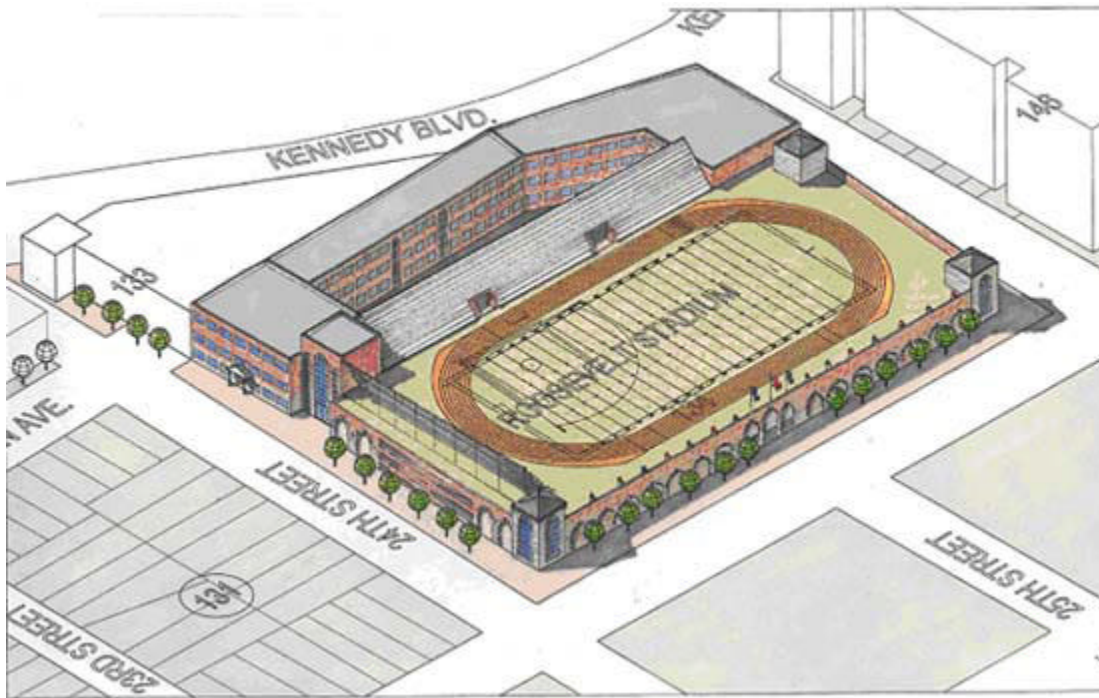


Governor announces preliminary Demonstration Projects designation in Union City

On October 29th, Governor McGreevey announced the preliminary designation of 6 Demonstration Projects, which leverage school construction funding to bring in private investment and revitalize entire neighborhoods with new housing and retail opportunities. The School Construction Corporations Board of Directors held a Special Meeting on October 30th

to recommend all 6 projects to the Treasurer so that predevelopment work can commence. This action will ultimately bring new 21st century schools and community centers to redevelopment areas in Trenton, New Brunswick, Union City, East Orange, Camden and Vineland.

Union City: The \$366 million demonstration project in Union City - which includes about \$91 million in state funding - calls for construction of a 250,000-square-foot high school for 1,700 students next to Roosevelt Stadium, which is to be demolished.



Rendering for Union City High School/Athletic Field

A new one-story structure to be built on the Roosevelt Stadium site will include a gym, auditorium and cafeteria; a new stadium will be built on the roof of this building to accommodate a regulation size football field. The project also includes a new 5,000-square-foot health center/day care for the students. The SCC estimates this project will create an average of 350 construction jobs a day - to a high of 900 at peak periods - over the course of a 120-month construction schedule.

East Orange: The \$89 million demonstration project in the Main Street redevelopment area proposes a 1,310-student pre-K through 12th grade performing arts magnet community school combining East Orange's acclaimed Washington Academy of Music and the Cicely Tyson School of Performing and Fine Arts. Plans entail razing former East Orange High, built in 1911, to create an 11-acre campus with separate buildings for

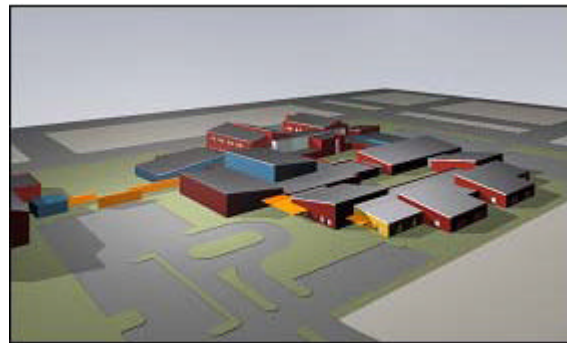
"Old Trenton." It includes 37,710 square feet of new construction linked to 47,010 square feet of renovated space in two vacant buildings. The school will be part of an urban campus with such community-based learning institutions as the Public Library, Mercer County Community College and YMCA. The SCC estimates this project will create an average of 45 construction jobs a day - to a high of 120 at peak periods - over the course of a 22-month construction schedule.



Jeff Nash, Camden County Freeholder Director,
Camden Mayor Gwen Faison, State Treasurer
McCormac, Riletta Cream, Camden County Freeholder,
Caren Franzini, CEO, EDA

Camden: The \$39.9 million demonstration project at Dudley Grange Park in East Camden will include a new 90,000-square-foot school for 540 students in Kindergarten through 6th grade, and a 39,000-square-foot community center for the Camden Boys & Girls Club. The school, which will replace the existing Catto School, includes traditional classrooms, art, music and science areas, library/media center, gym and swimming pool. SCC estimates the Camden project will create an average of 70 construction jobs a day - to a high of 180 at peak periods - over the course of a 24-month construction schedule.

Vineland: The proposed \$47.4 million demonstration project will include a new pre-Kindergarten through 5th grade school for 820 students on a 9.7-acre campus in the heart of the city of Vineland. The school will be a cluster of smaller buildings that will accommodate students according to grade level. A separate two-story structure will include an adult learning center and community activity center and support services. The SCC estimates the Vineland project will create an average of 90 construction jobs per day - to a high of 250 at peak periods - over the course of a 29-month construction schedule.



Vineland Demonstration Project

[Back to top](#)



Business Administrator Peter Corigliano; Board of Education members Leslie Septor, Donald Webster, Gary Rhodes, Jane Stiers, Steve Placido, Mary Walter, and Mort Sternin; former Board of Education President Cecile Thornton; and Superintendent of Schools Dr. William E. DeFeo.

II. Manchester Township High School, Middle School & Whiting Elementary School Groundbreakings

The SCC broke ground on 2 projects in Neptune Township that will be fully funded and managed by the state. Both projects are scheduled to be completed in 2005.

[Back to top](#)



Neptune High School Groundbreaking

III. Neptune High School & Green Grove Elementary School Groundbreakings

The SCC participated in groundbreaking events for Manchester Township High School, Manchester Township Middle School and Whiting Elementary School in Ocean County. The SCC will manage construction of all three facilities and will be providing approximately \$12 million toward the construction costs. The projects are scheduled for completion in 2005.



Green Grove Road Elementary School Groundbreaking

[Back to top](#)

IV. **Construction Update** **Construction Starts**

The SCC awarded 9 construction packages in 7 districts during the month of October for combined construction bids totaling \$32,573,616. These awards will involve 9 schools in various districts including: a \$13.4 million Early Childhood Center in Millville; a \$12.1 million Early Childhood Center and work for a \$4.8 million PreK-8 school in Elizabeth. A full list is attached as [Exhibit A](#).

At the October Board of Directors meeting for the NJ Schools Construction Corporation, a general construction services contract was awarded for the Heights Middle School in Jersey City. The new 164,000 square foot facility is projected to house upwards of 770 students. The \$38.5 million project was awarded to Bovis Lend Lease, Inc.

The SCC Board also approved a professional services consultant contract for design, as well as construction administration services for the Passaic Stadium Middle School in the Passaic School District. The current construction cost estimate for the project is \$30 million and it is expected to serve 1,100 students. Einhorn Yaffee Prescott Architecture and Engineering, P.C. was awarded the contract.

As of October 31, 2003, the SCC has entered into 354 construction contracts that total \$1,197,779,379.

[Back to top](#)

V. **Contractor Procurement**

The SCC advertised 10 construction packages for 3 school districts in the month of October, which will impact 10 schools. A full list of the construction advertisements for October is attached as [Exhibit B](#).

Design bids were sought for 6 schools in 5 districts in October as well. The list of those advertisements is attached as [Exhibit C](#).

[Back to top](#)

VI. **Design Update**

As of October 31, 2003, the SCC has entered into 204 design contracts with a total value of \$215,892,686, as well as assumed an additional 67 architectural assignments that totaled \$82,069,541.

[Back to top](#)

VII. **Predevelopment & Land Acquisition**

As of October 31, 2003 the SCC has entered into 337 site acquisition contracts for appraisals, site evaluations, environmental investigations, title services and actual acquisitions totaling \$93,430,631.

[Back to top](#)

VIII. **School District Grants**

The SCC executed 31 Section 15 grants with 61 districts that receive less than 55% of their funding in state aid. The total project costs for these grants are expected to be \$110,514,408, with a state share anticipated to be worth \$33,420,926 of that total.

Several districts received multiple grant awards in October. Paramus in Bergen County will receive grants for projects at 1 high school and 5 elementary schools. The total projects costs are expected to be \$1,740,368, with a state share of \$696,147. The Moorestown in Burlington County will receive \$8,978,276 toward projects at 1 high school, 1 middle school and 2 elementary schools, worth \$37,474,190. Belleville in Essex County will receive grants for 1 high school, 1 middle school and 4 elementary schools with total project costs of \$1,490,735, of which the state will pay \$603,564.

Schools in Cherry Hill Township, Camden County will receive grants for projects at 2 middle schools and 2 elementary schools. The total projects costs are expected to be \$1,271,703, with a state share of \$449,941. The Kingsway Regional School District in Gloucester County will receive \$7,903,286 toward 2 projects, worth \$24,817,305. Union Township in Union County will receive grants for 1 middle school and 6 elementary schools with total project costs of \$12,825,000, of which the state will pay \$5,021,200. The school district in Totowa, Passaic County will receive grants for projects at 2 middle schools and 2 elementary schools. The total projects costs are expected to be \$12,003,606, with a state share of \$3,301,040.

As of October 31, 2003, the SCC has executed 1,133 Section 15 grant agreements with districts that receive less than 55% of their budget in state aid for total project amounts of \$4,055,112,430, for which the state share totaled \$1,247,827,978. In October alone, 25 districts in 15 counties received direct property tax relief as the state share for their school construction projects.

[Back to top](#)

IX. **Conferences/Presentations**

Council for Higher Education in Newark (CHEN) Meeting, 10/7/03, Newark

Professional Women in Construction W/MBE Technical Assistance Workshop, 10/15/03, New York

Statewide Hispanic Chamber of Commerce 13th Annual Convention, 10/17/03, Newark

Selective Corporate Internship Program Luncheon, 10/17/03, Manhattan

McGraw-Hill ENR Construction Summit, 10/22/03, Washington

NJ School Boards Association Convention, 10/22-23/03, Atlantic City

FINPRO - Architects and Engineers Practice Leader Summit, 10/23/03, Newark

Neptune Board of Education Annual School Boards Breakfast, 10/23/03, Atlantic City

Building Contractors Association of NJ Annual Dinner, 10/24/03, West Paterson

Urban Superintendents Meeting, 10/29/03, Trenton

SCC Demonstration Project Announcement, 10/29/03, Trenton/Camden

Boy Scouts of America Central NJ Council 2003 Construction Industry Dinner,
10/29/03, East Brunswick

School Renaissance Zone Announcement, 10/31/03, Union City

[Back to top](#)

John F. Spencer, Chief Executive Officer
Prepared by George Strachan, November 26, 2003