

Dam Safety E-Newsletter



NJDEP BUREAU OF DAM SAFETY
Office of Dam Safety and Flood Engineering



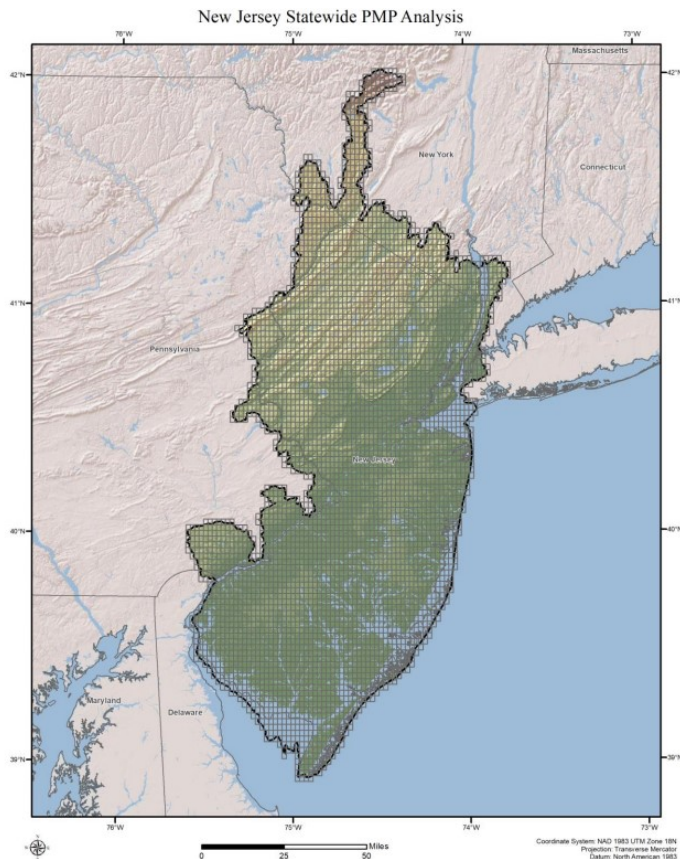
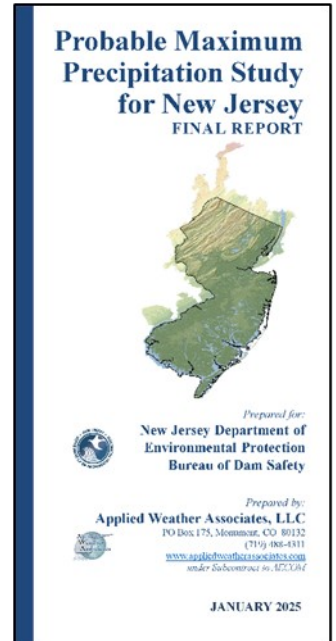
Fall 2025

New Jersey Probable Maximum Precipitation (PMP) Study

The Bureau recently completed a Statewide PMP Study for New Jersey. The Study is a culmination of a multiyear effort to update PMP rainfall by incorporating 50 years of data and current practices since the last PMP Study for the region was completed by the National Weather Service (NWS).

PMP is an estimate of the theoretical maximum depth of precipitation that can occur over a given area and is used as the basis for evaluating Class I (High Hazard) and Class II (Significant Hazard) Dams regulated by New Jersey's Safe Dam Act. Use of the new Statewide PMP Study is now required by the Bureau for dam analyses and supersedes NWS Hydrometeorological Reports HMR 51 and HMR 52. Dam owners and engineering consultants are encouraged to contact the Bureau regarding specific projects that are ongoing or currently under review for applicability of the new Study.

An ArcGIS Tool has also been developed to aid engineers in utilizing the Study. The Tool provides a series of updated estimates of PMP depths for watersheds in New Jersey, as well as associated temporal rainfall distributions for each PMP storm type and time duration.



The complete PMP Study Report, ArcGIS Tool with instructions, as well as general usage guidance can be found on the Bureau's webpage: [Probable Maximum Precipitation Study for New Jersey](#).



Inside this issue:	
DAM SAFETY LOAN APPROPRIATION	2
DAM OWNER WORKSHOPS	2
EAP SUBMISSIONS	3
CONTACT INFORMATION	3

Figure 1.5: PMP analysis grid placement over the PMP domain



Dam Safety E-Newsletter

Dam Safety Loan Appropriation



The NJ State Legislature has appropriated approximately \$28.7 million in funding through the Dam Restoration Loan Program for 18 projects (17 dam restoration projects and one lake dredging project) approved under the last application round.

At this time, it is estimated that the Department will be able to open the next application period in 2026. The Notice of Availability of Loan Funds and Application Deadline will be published in the New Jersey Register and on the Bureau of Dam Safety Web Site when available.

To learn more about the Dam Restoration Loan Program, please visit the Bureau's website [here](#).

Dam Owner Workshops: October 15, 2025 & November 19, 2025

The Association of State Dam Safety Officials (ASDSO), in conjunction with the NJ Department of Environmental Protection, Bureau of Dam Safety, is hosting one-day Dam Safety Workshops for dam owners and operators as well as any engineers with an interest in dam safety. There are two upcoming workshops: October 15, 2025 and November 19, 2025.

Each workshop is intended to be an owner-friendly look at dam engineering to help owners/operators recognize problems and emergency situations, improve operations, as well as perform and schedule preventive maintenance. Lunch and refreshment breaks will be included in the registration fee. Information will be presented throughout the day and attendees will have the opportunity to meet and network with state dam safety officials, experts in the field of dam safety, and other dam owners. Materials and resources will be available in advance for registered attendees. The registration form and course information is available on both the Bureau's [website](#) and ASDSO's website ([Glassboro](#) / [Parsippany](#)).

The October 15, 2025 course will be held at the Courtyard by Marriott in Glassboro, NJ.

The November 19, 2025 course will be held at the Embassy Suites in Parsippany, NJ.

All prospective attendees must register by October 8, 2025 (Glassboro workshop) and November 12, 2025 (Parsippany workshop). Walk-ins will not be accepted.



The one-day workshop will educate dam owners and operators about the following topics:

- ◆ *State Dam Safety Program*
- ◆ *Basic Dam Terminology and Design Options*
- ◆ *Seepage Through Dam Embankments*
- ◆ *Erosion and Other Common Issues*



Dam Safety E-Newsletter

Emergency Action Plan (EAP) Submissions

The Bureau requires periodic updates to all Emergency Action Plans on an annual basis, at minimum, or more frequently as needed to reflect accurate contact information. Please be reminded that Attachment F. *Post Earthquake and EAP Activation Guidelines* (from the Bureau's sample EAP document found [here](#)) must be included in the EAP text.

Please also be reminded that outdated and/or indistinct base mapping must be updated to current aerial imagery in order to clearly show the inundation area. In most cases, a mapping update will incorporate previously approved inundation lines for the sunny day breach and spillway design storm with breach event, with the only changes to the maps being the background imagery and title blocks. If existing inundation maps are not based on an approved study or there are no inundation maps on record with the Bureau, a dam breach analysis will be required to generate new inundation mapping. The Bureau is also requiring GIS compatible files of the inundation lines. All EAP updates (including annual text updates) must be submitted electronically as a complete PDF document with inundation maps to the Bureau at DamSafety@dep.nj.gov.

1-2-3's of EAP's

1. *Establishes a monitoring system and procedures to activate the Plan.*
2. *Includes the officials, organizations, agencies, and their respective responsibilities.*
3. *Identifies those areas, residences, facilities, and roads which might be affected by a dam failure.*

New Jersey Department of Environmental Protection

BUREAU OF DAM SAFETY

LOCATION

501 East State Street
1st Floor
Trenton, NJ 08625-0420

MAILING ADDRESS

State of New Jersey
Department of Environmental Protection
Watershed and Land Management
Bureau of Dam Safety
Mail Code 501-01A
PO Box 420
Trenton, NJ 08625-0420

Phone: 609-984-0859
E-mail: damsafety@dep.nj.gov

Helpful Dam Safety Links

[Association of State Dam Safety Officials](#)

[Responsible Dam Ownership](#)

[Living With Dams](#)

[FEMA - National Dam Safety Program](#)

[Bureau of Reclamation - Dam Facilities](#)

[U.S. Army Corps of Engineers](#)

Visit our website at <https://dep.nj.gov/wlm/drec/dam-safety/>

