

New Jersey Court of Errors and Appeals

BETWEEN

THE MAYOR AND ALDERMEN OF
JERSEY CITY, a municipal corpora-
tion

Complainant-Appellant

and

JERSEY CITY WATER SUPPLY
COMPANY, *et als.*

Defendants-Respondents

On Appeal from
the Court of
Chancery

THE IMPROVED COLUMBIAN CLASP No. 75

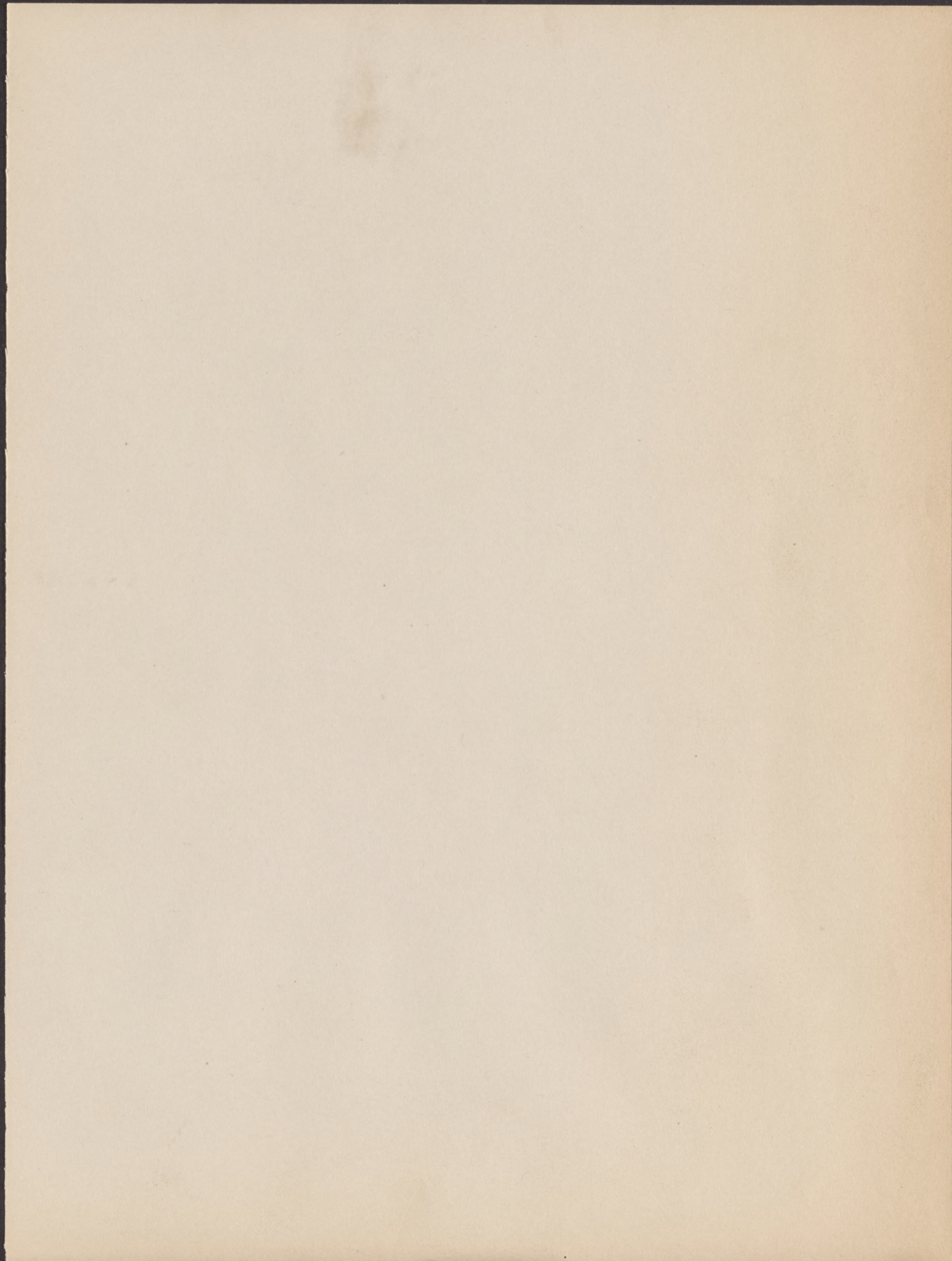
PAT. JAN. 7, '19

THE UNITED STATES ENVELOPE CO. SPRINGFIELD, MASS.



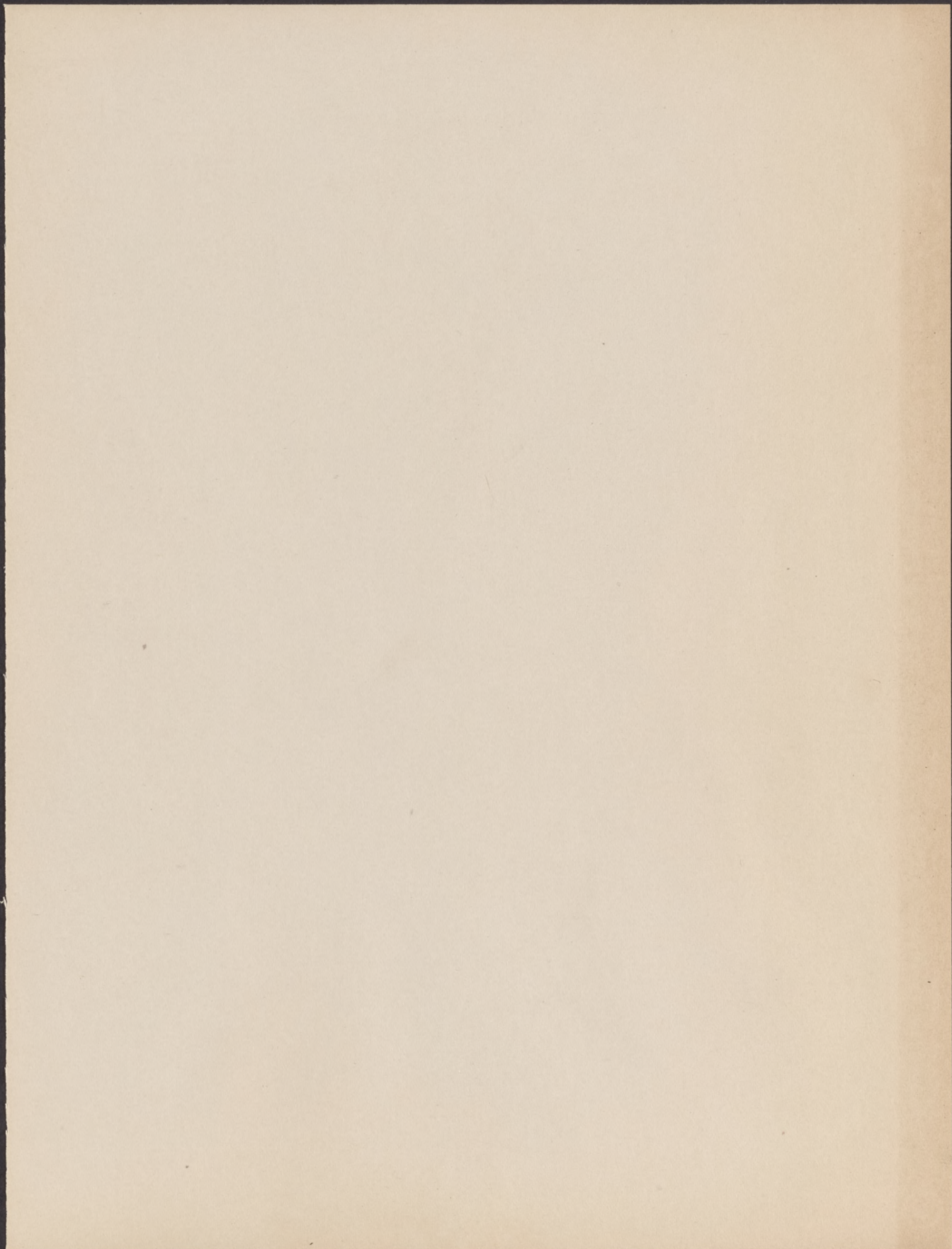
N^o 10A FILL IN MORRIS CANAL AT EAST CLINTON ST. - DOVER
VIEW LOOKING EAST
OCT. 10, 1924

!





№ 10 FILL IN MORRIS CANAL AT NORTH BERGEN ST DOVER
VIEW LOOKING SOUTH EAST OCT 10, 1924



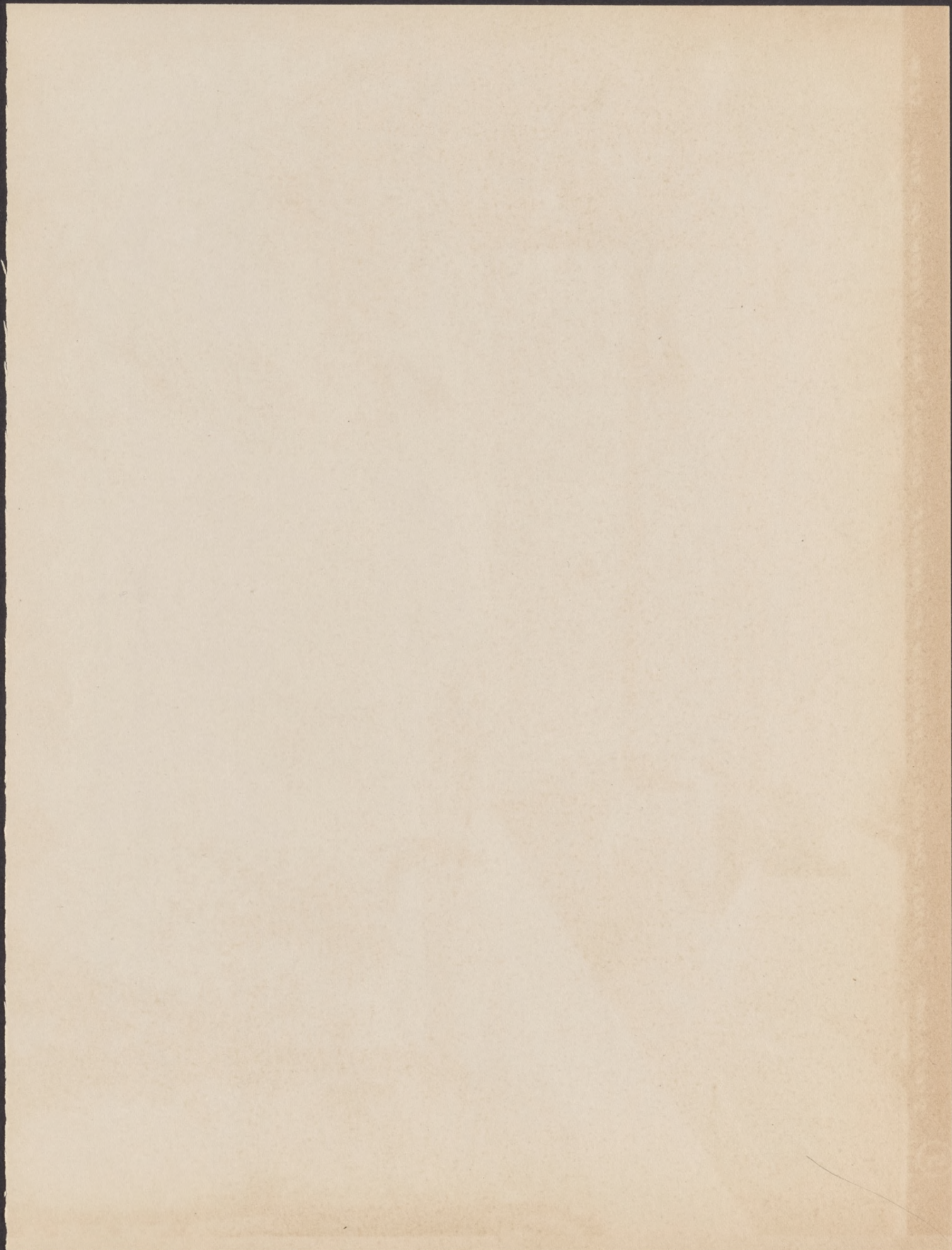


NO 10 C SAME LOCATION AS NO. 10 SHOWING SITE OF HUDSON ST BRIDGE AND FILL IN CANAL
BED BETWEEN HUDSON ST AND NORTH BERGEN ST AT DOVER JUNE 11, 1925

2



Nº 10 B FILL IN MORRIS CANAL AT NORTH BERGEN ST. - DOVER
VIEW LOOKING NORTH WEST
OCT. 10, 1924





NO. 23 SITE OF MORRIS CANAL CROSSING STREAM IN ROCKAWAY LOOKING SOUTH. JUNE 11, 1925

THE UNIVERSITY OF CHICAGO LIBRARY



NO 11

ROADWAY ON WEST BANK OF MORRIS CANAL NORTH OF BRIDGE #77 NEAR DENVILLE
VIEW LOOKING SOUTH.

OCT. 15, 1924.

6

MADE IN GREAT BRITAIN BY THE MANUFACTURING COMPANY



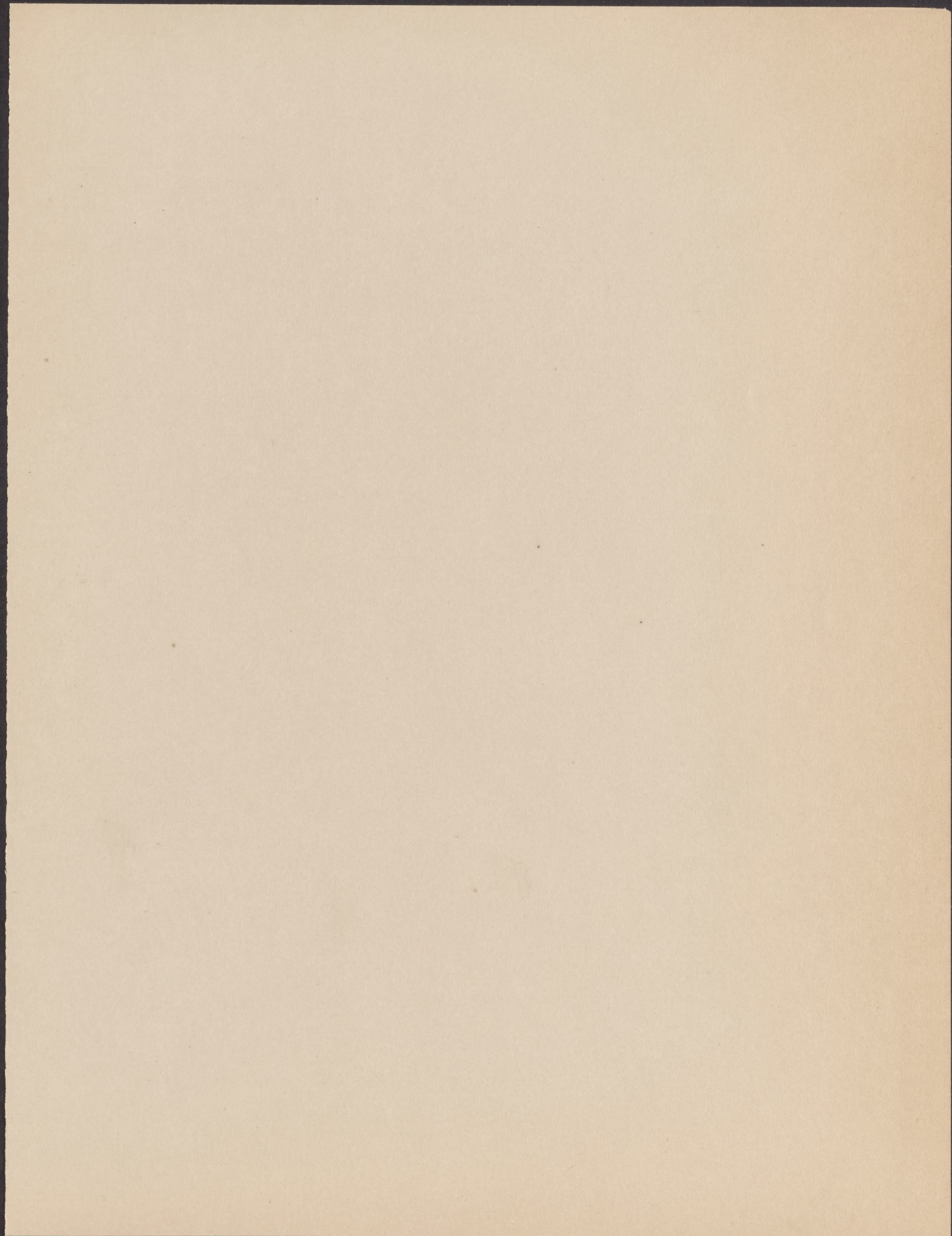


NO. 22 SITE OF CEDAR LAKE BRIDGE OVER MURRIS CANAL AT DENVERVILLE - LOOKING EAST
JUNE 11, 1925

THE UNIVERSITY OF CHICAGO PRESS
50 EAST LAKE STREET, CHICAGO, ILLINOIS 60607
TEL: 773-936-3700 FAX: 773-936-3731
WWW.CHICAGO.PRESS.EDU



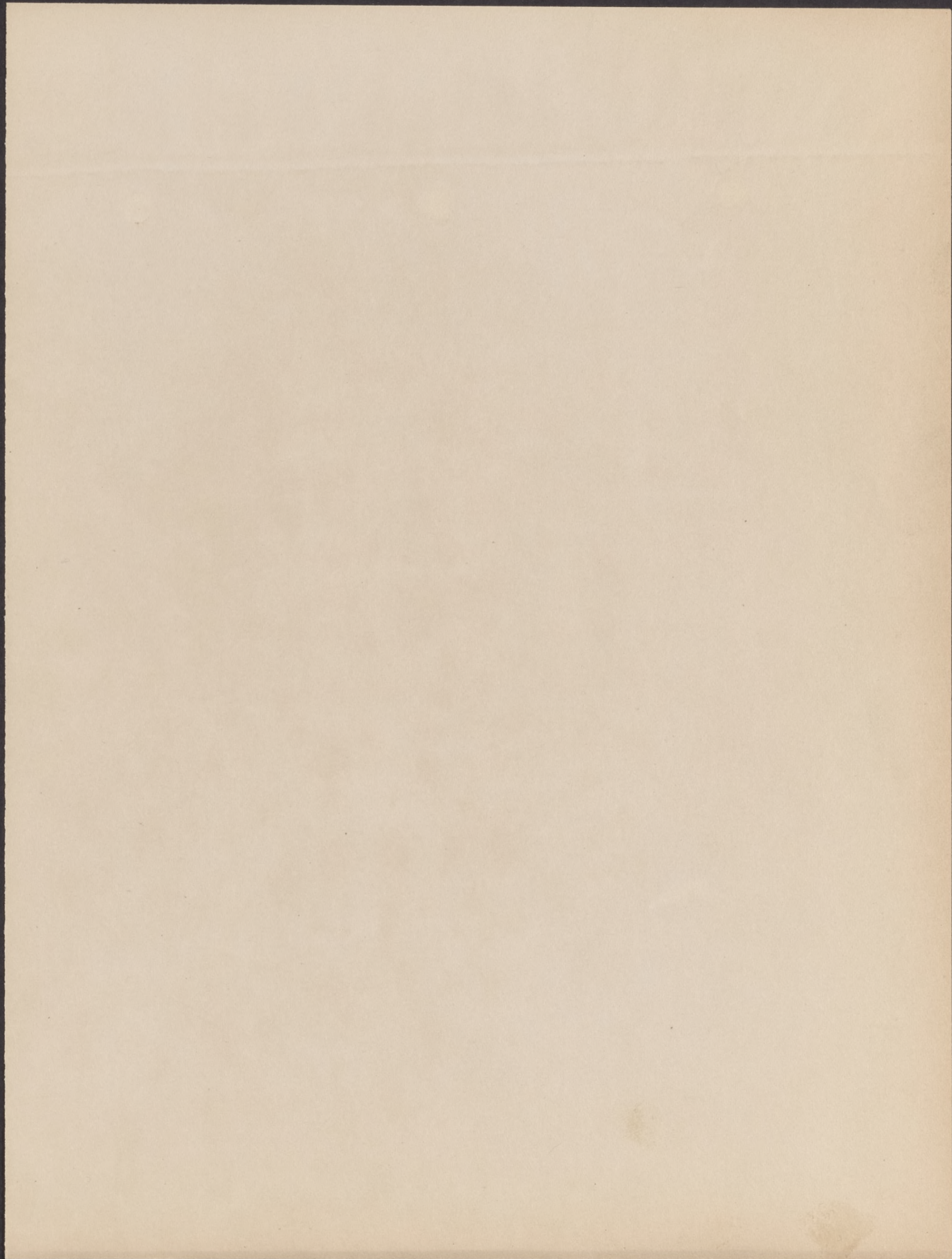
NO 98 SEWER CONSTRUCTION IN MORRIS CANAL NORTH FROM PEER'S LOCK NEAR DENVER
OCT. 10, 1924





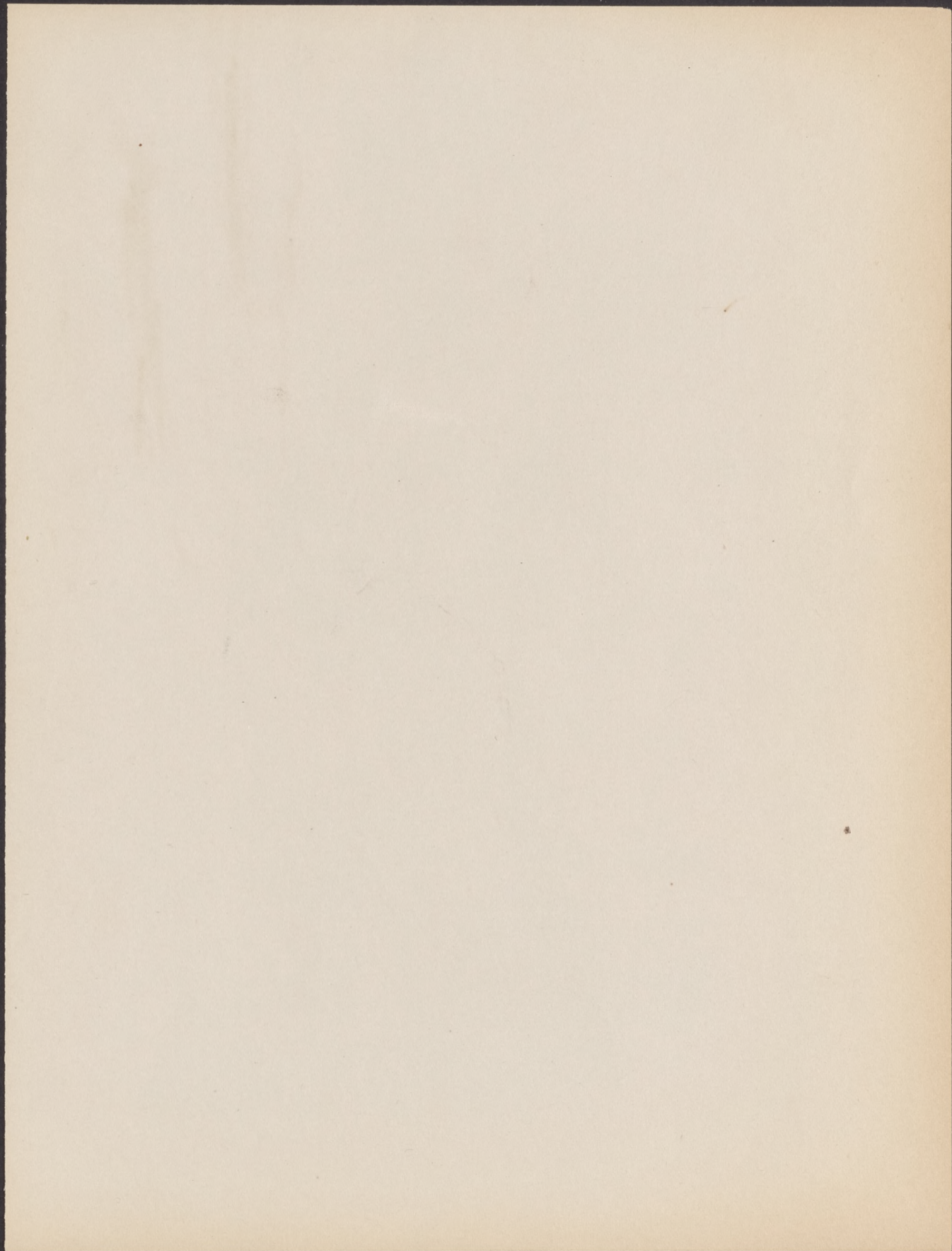
NO 9A FILL & SEWER CONSTRUCTION IN MORRIS CANAL-MAIN ROAD CROSSING AT PEER'S LOCK NEAR DENVILLE
VIEW LOOKING SOUTH

OCT. 10, 1924



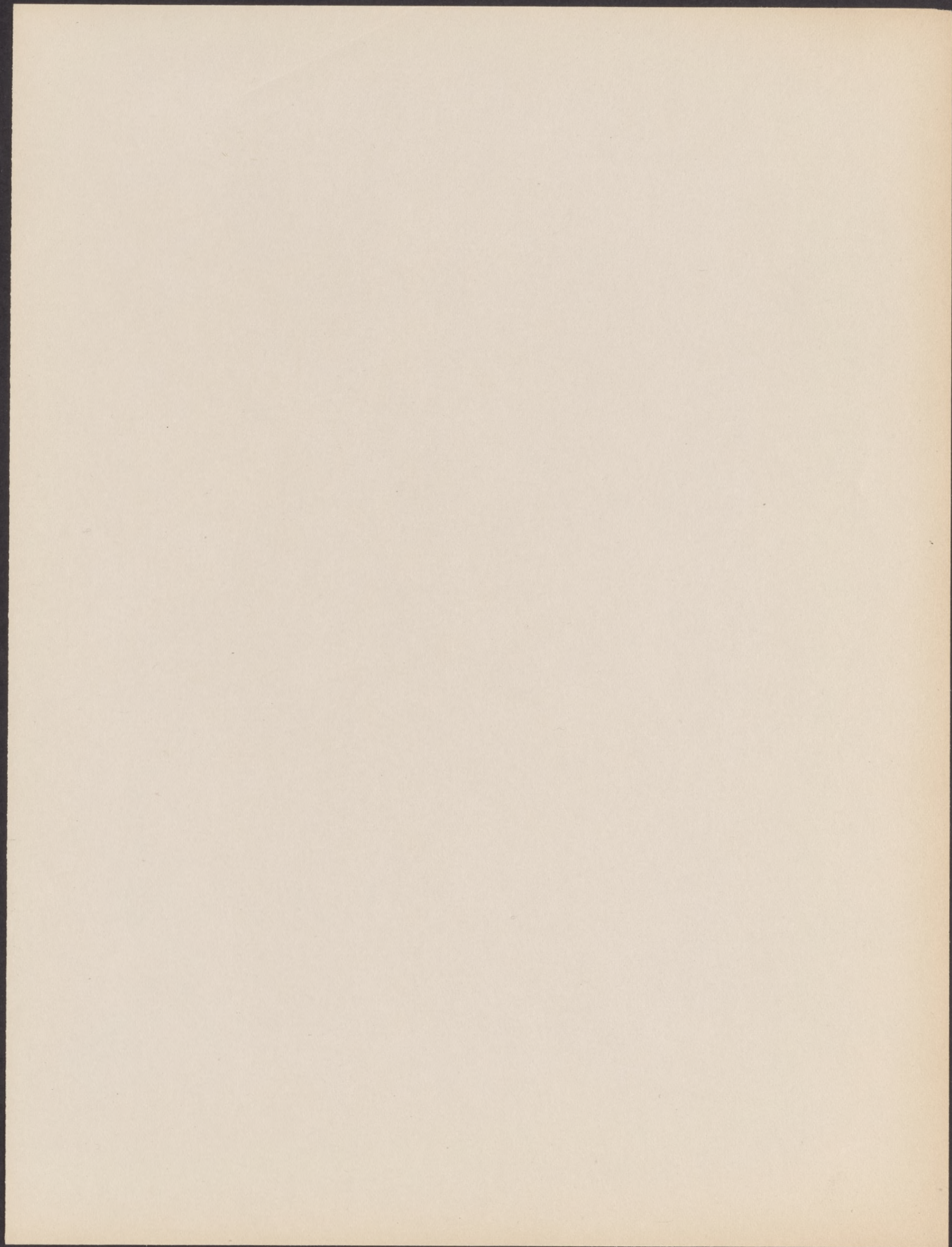


NO. 21 VIEW SHOWING FILL ON SITE OF MORRIS CANAL SOUTH OF PEER'S LOCK AT DENVILLE
JUNE 11, 1925



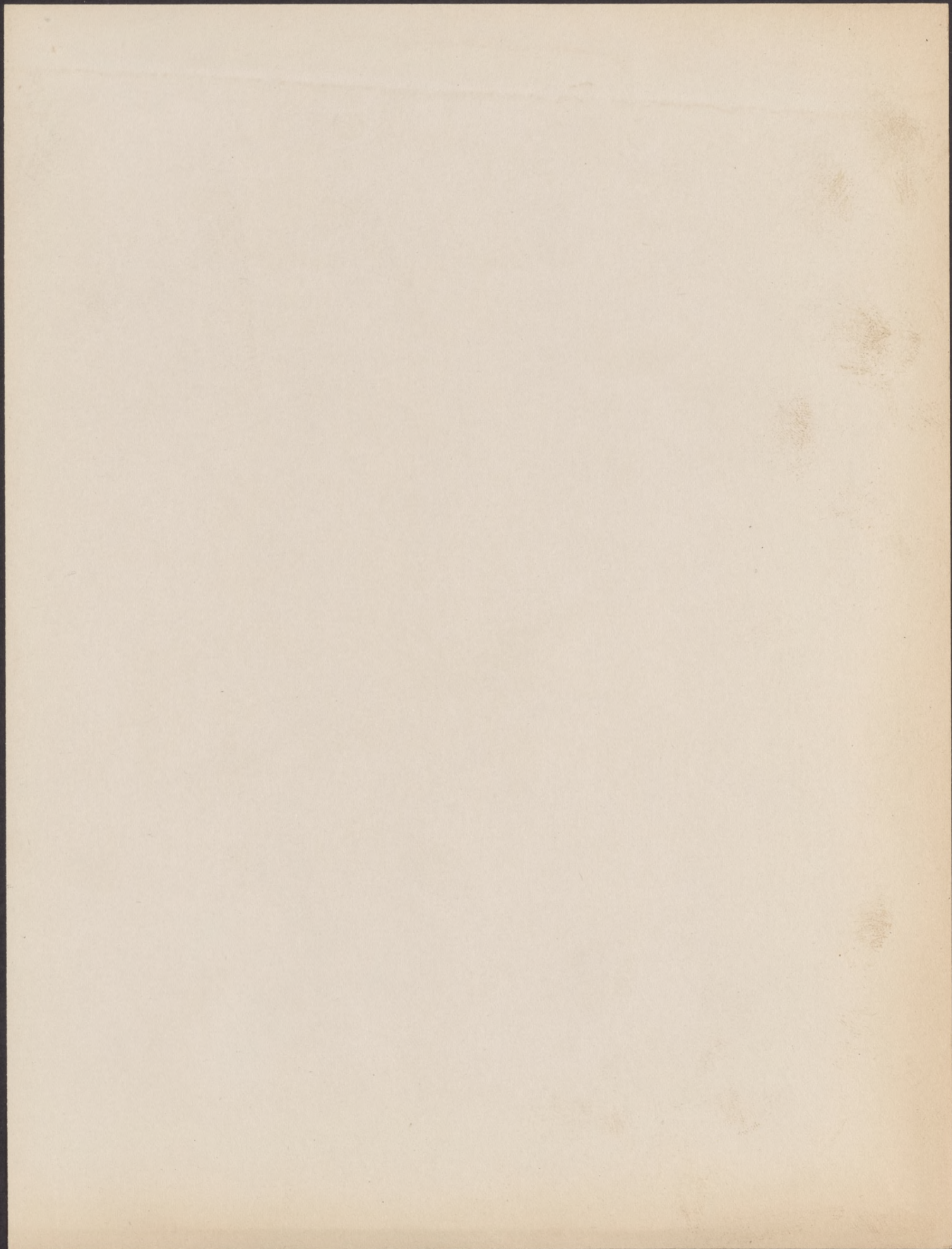


No 9 FILL IN MORRIS CANAL - MAIN ROAD CROSSING AT PEER'S LOCK NEAR DENVERVILLE
VIEW LOOKING NORTH
OCT. 10, 1924





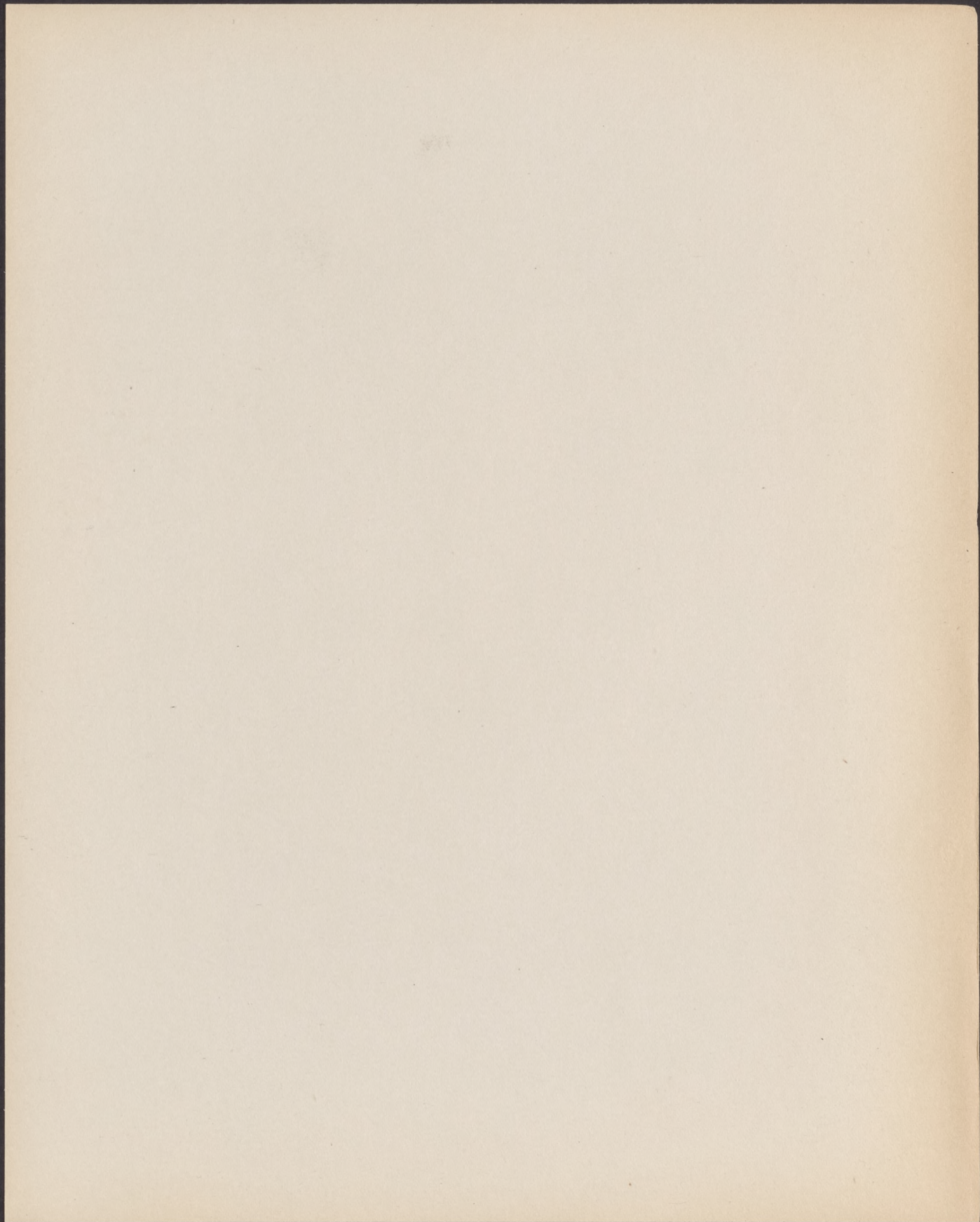
N^o 8 FILL IN MORRIS CANAL AT SITE OF FARM ROAD BRIDGE #82 WEST OF POWERVILLE
VIEW LOOKIN EAST OCT 10, 1924





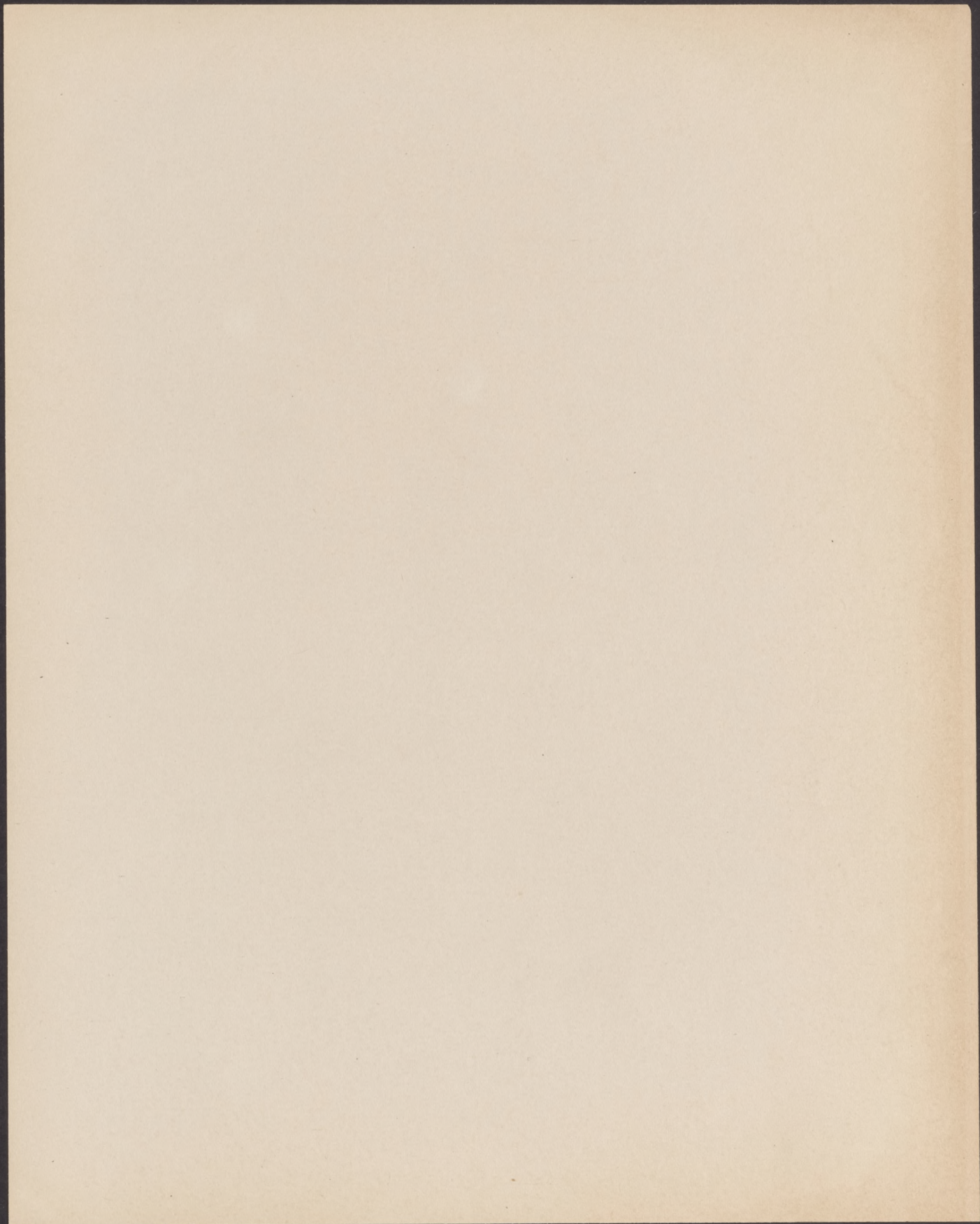
NO 7B SEWER CONSTRUCTION IN BED OF MORRIS CANAL 300 FEET WEST OF BRIDGE #84 ABOVE BOONTON
VIEW LOOKING EAST

OCT 9, 1924





Nº 7A FILL IN LOCK OF MORRIS CANAL WEST OF ROCKAWAY RIVER AT POWERVILLE ABOVE BOONTON
VIEW LOOKING EAST TOWARD BRIDGE #84 - OCT. 9, 1924

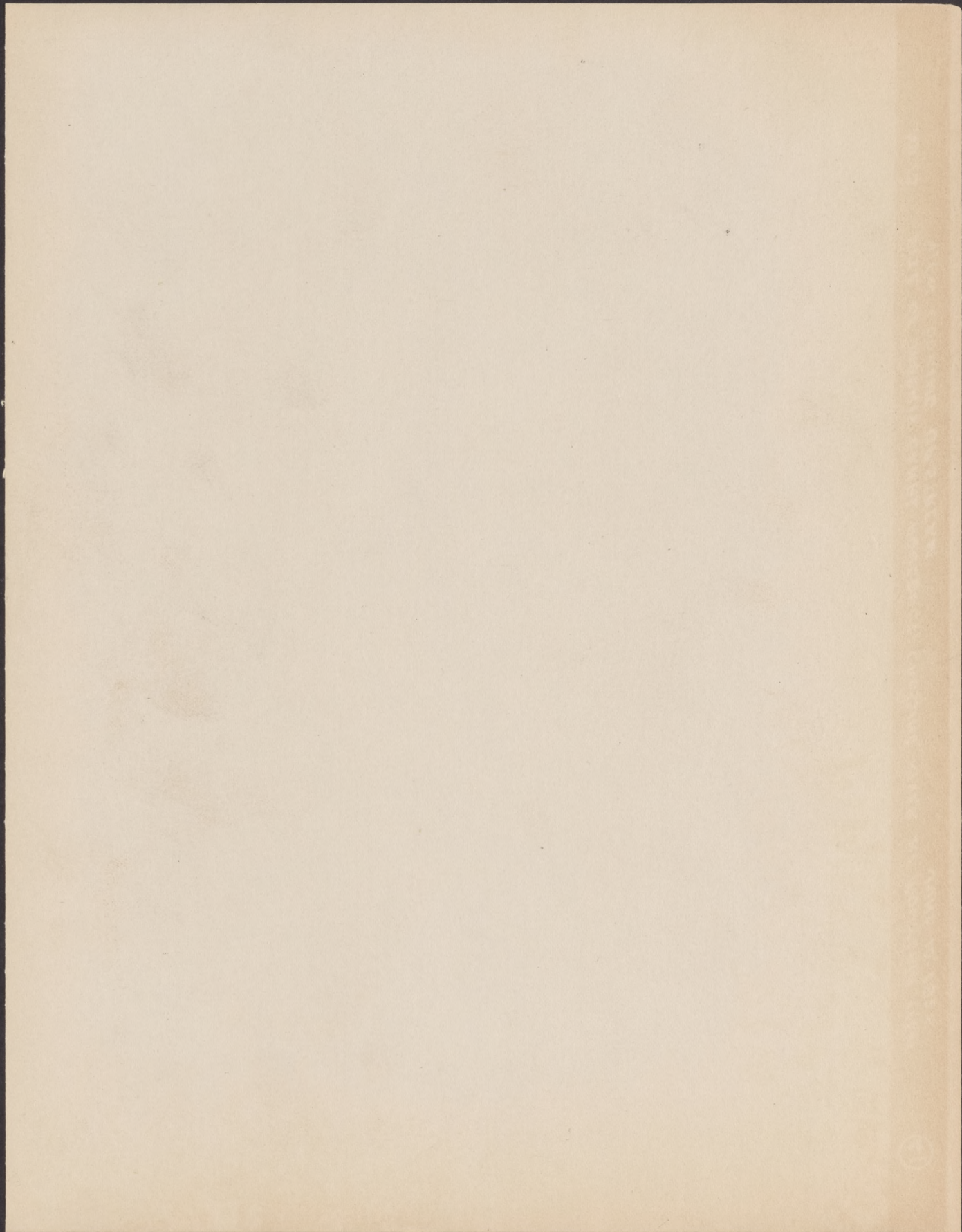




NO. 12 SITE OF MORRIS CANAL AQUEDUCT, CROSSING PASSAIC RIVER AT LITTLE FALLS
VIEW LOOKING DOWNSTREAM

JUNE 10, 1925

42



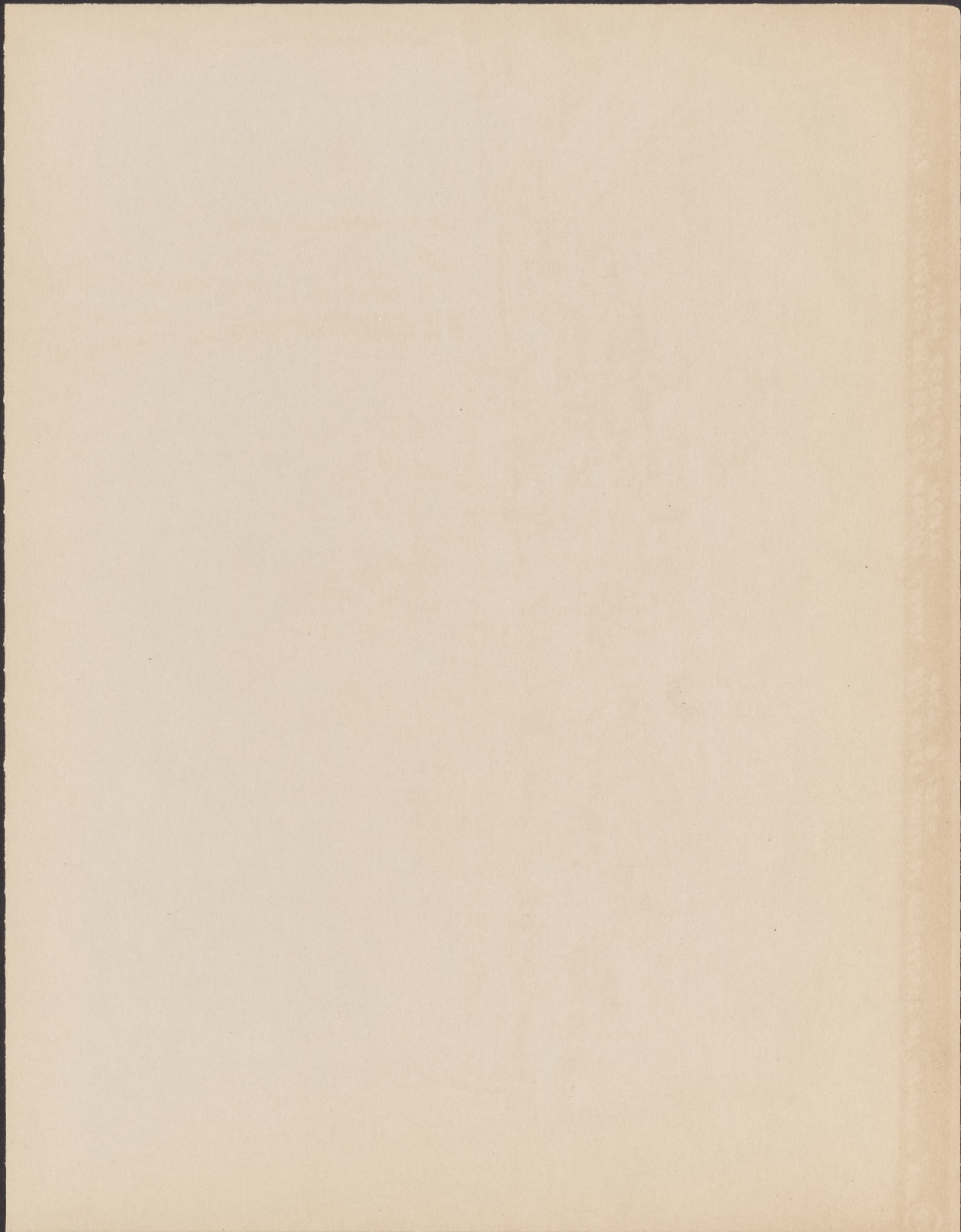


NO. 13

SITE OF MORRIS CANAL AQUEDUCT, CROSSING RIVER AT MOUNTAIN VIEW
VIEW LOOKING UPSTREAM

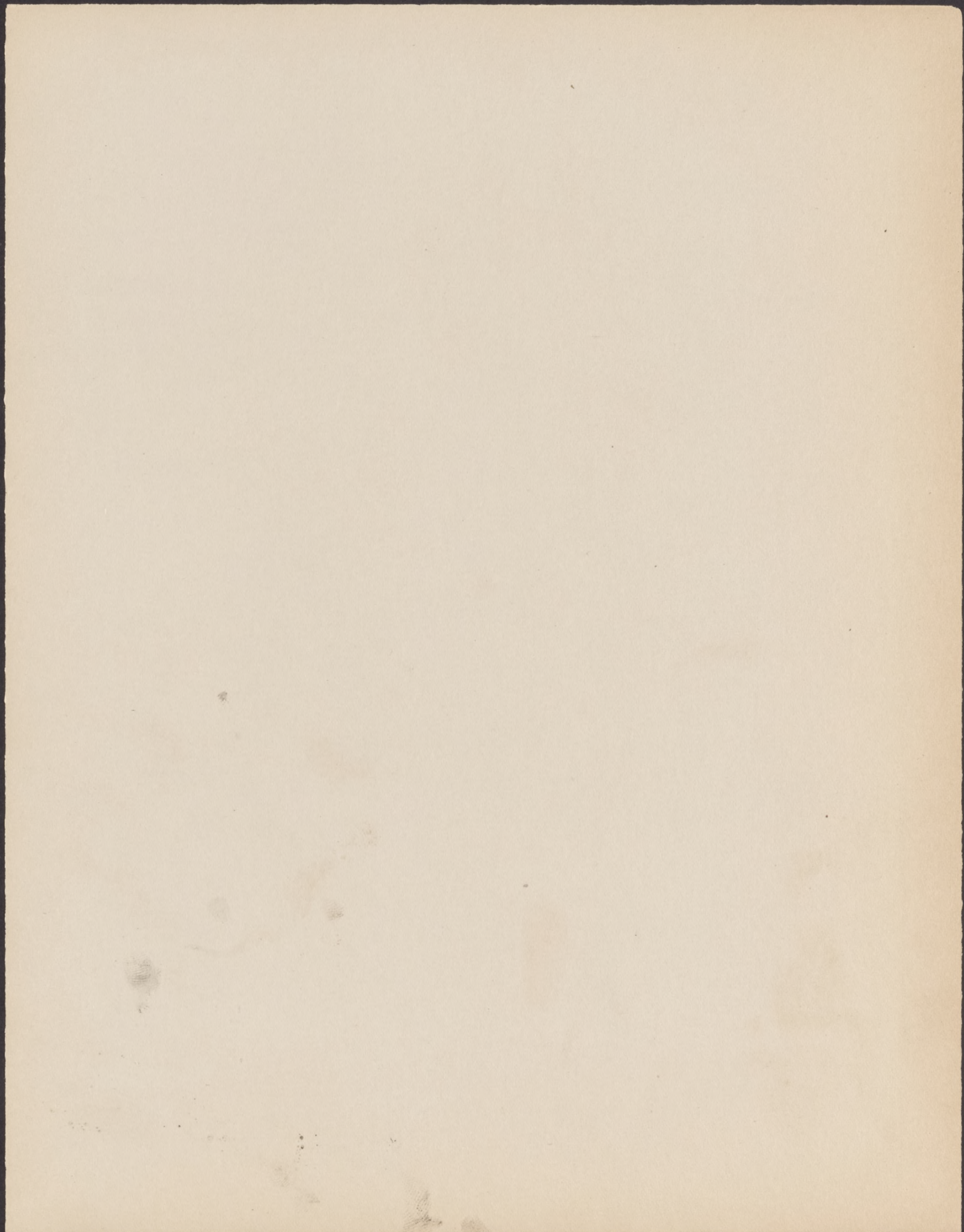
JUNE 10, 1925

41





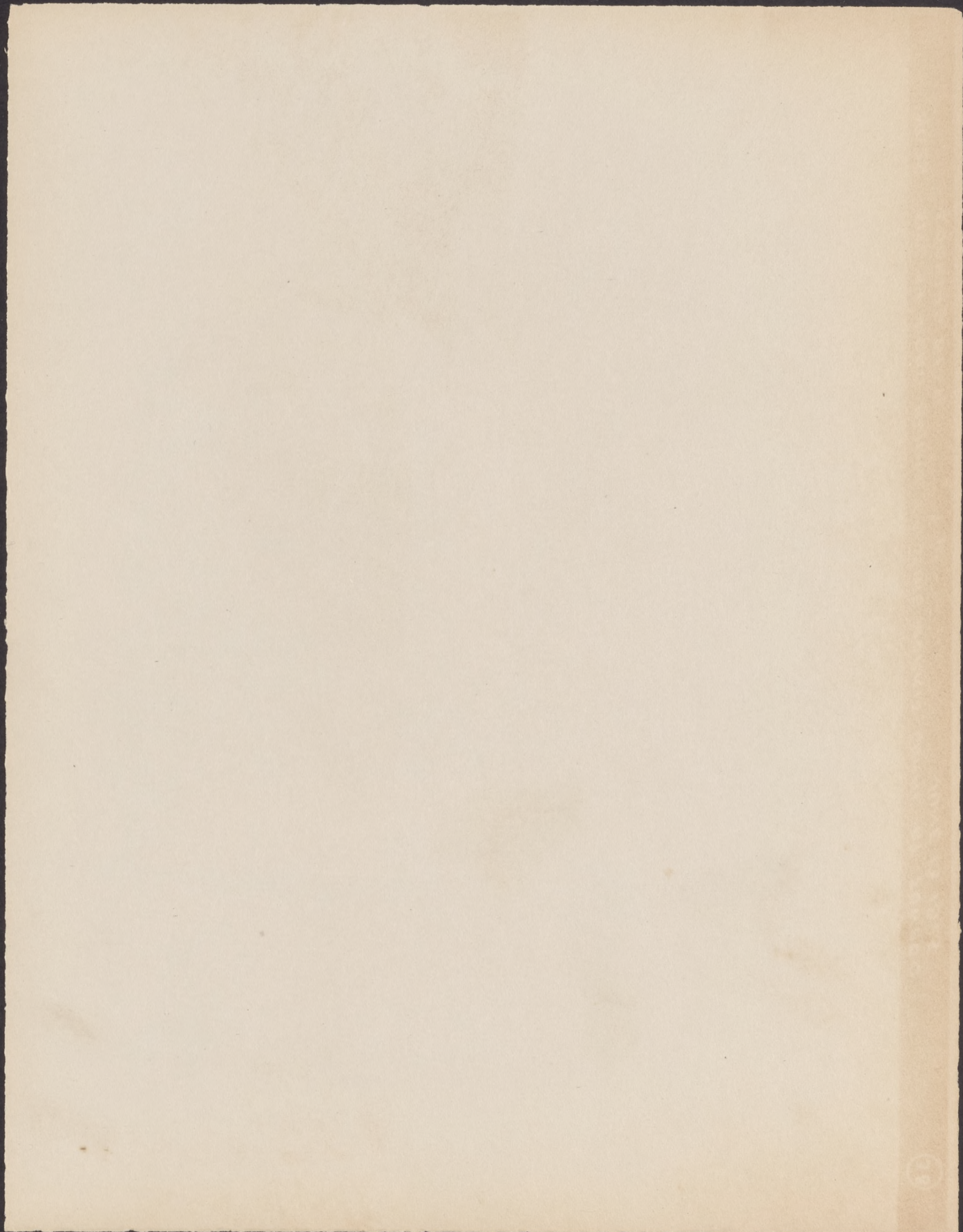
NO 1 SITE OF RYERSON BRIDGE ON MORRIS CANAL 8/10 MILES NORTH OF ACQUEDUCT AT MOUNTAIN VIEW (40)
VIEW LOOKING NORTH OCT. 9, 1924





N^o 1A SITE OF RYERSON BRIDGE ON MORRIS CANAL 8 1/10 MILES NORTH OF ACQUEDUCT AT MOUNTAIN VIEW
VIEW LOOKING SOUTH

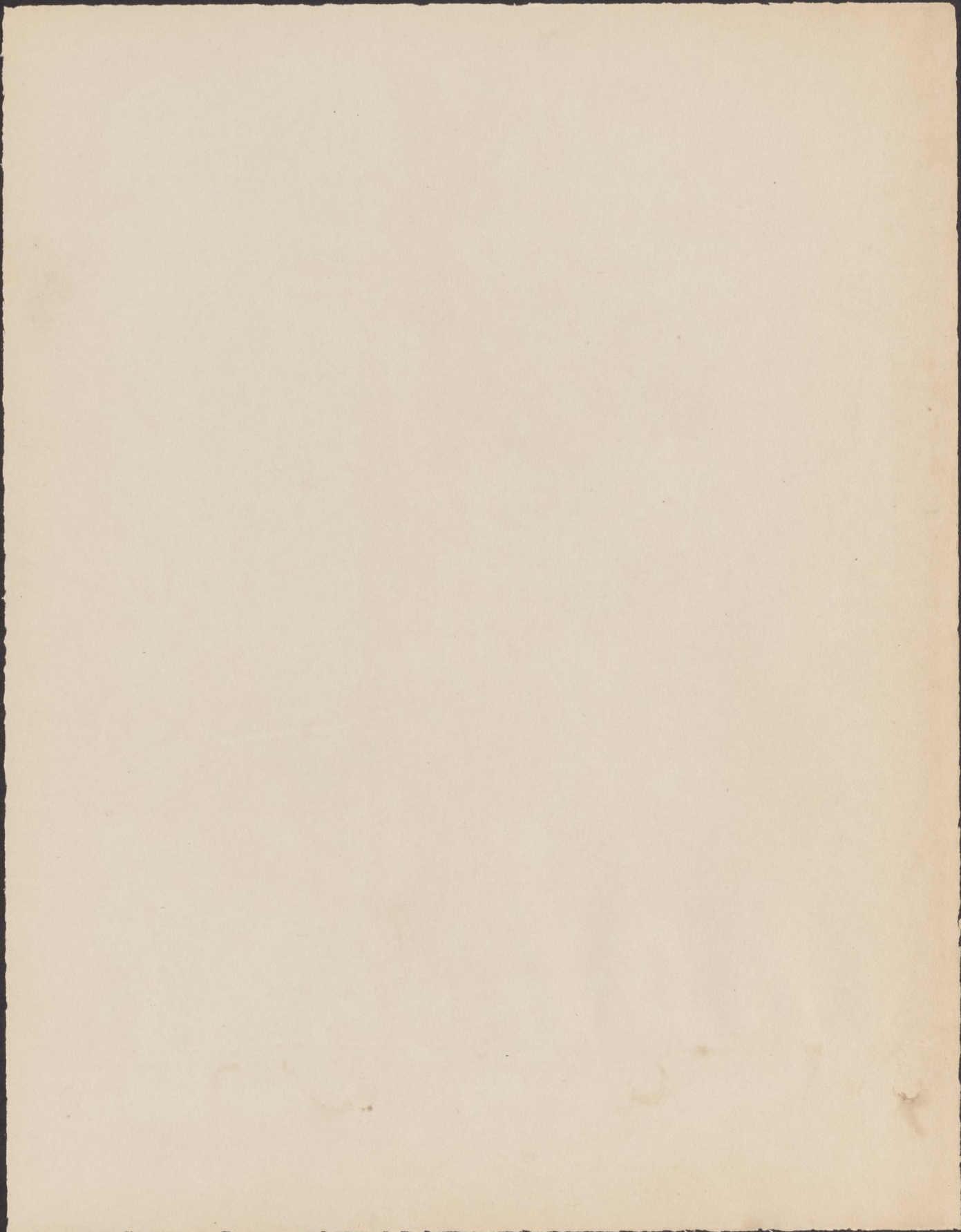
OCT. 9, 1924





NO. 25 SITE OF ROAD BRIDGE CROSSING MORRIS CANAL AT TOWACO
LOOKING WEST

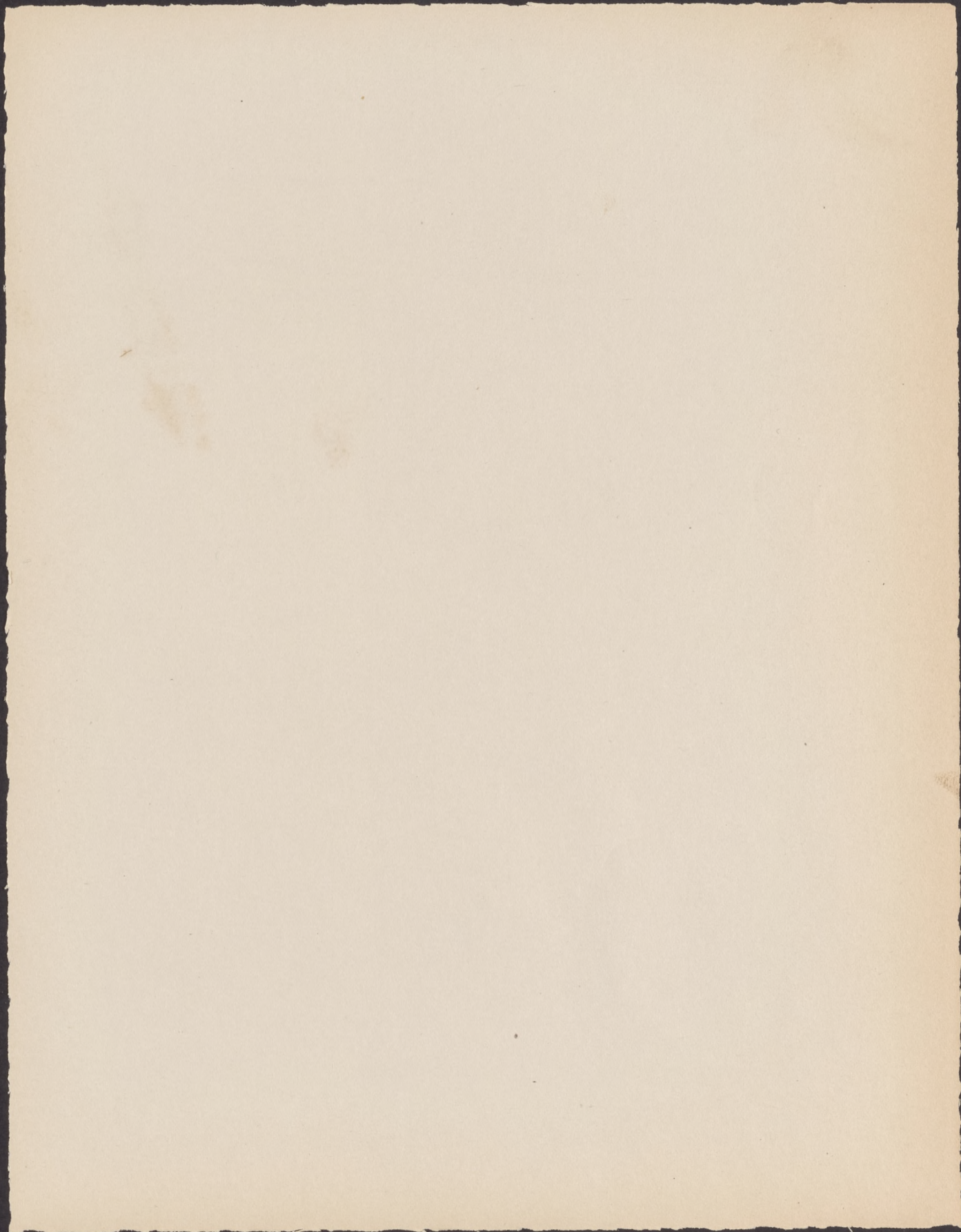
JUNE 13, 1925





N^o 2 FILL IN MORRIS CANAL AT SITE OF "CHANGE BRIDGE" IN LOWER MONTVILLE
VIEW LOOKING NORTH

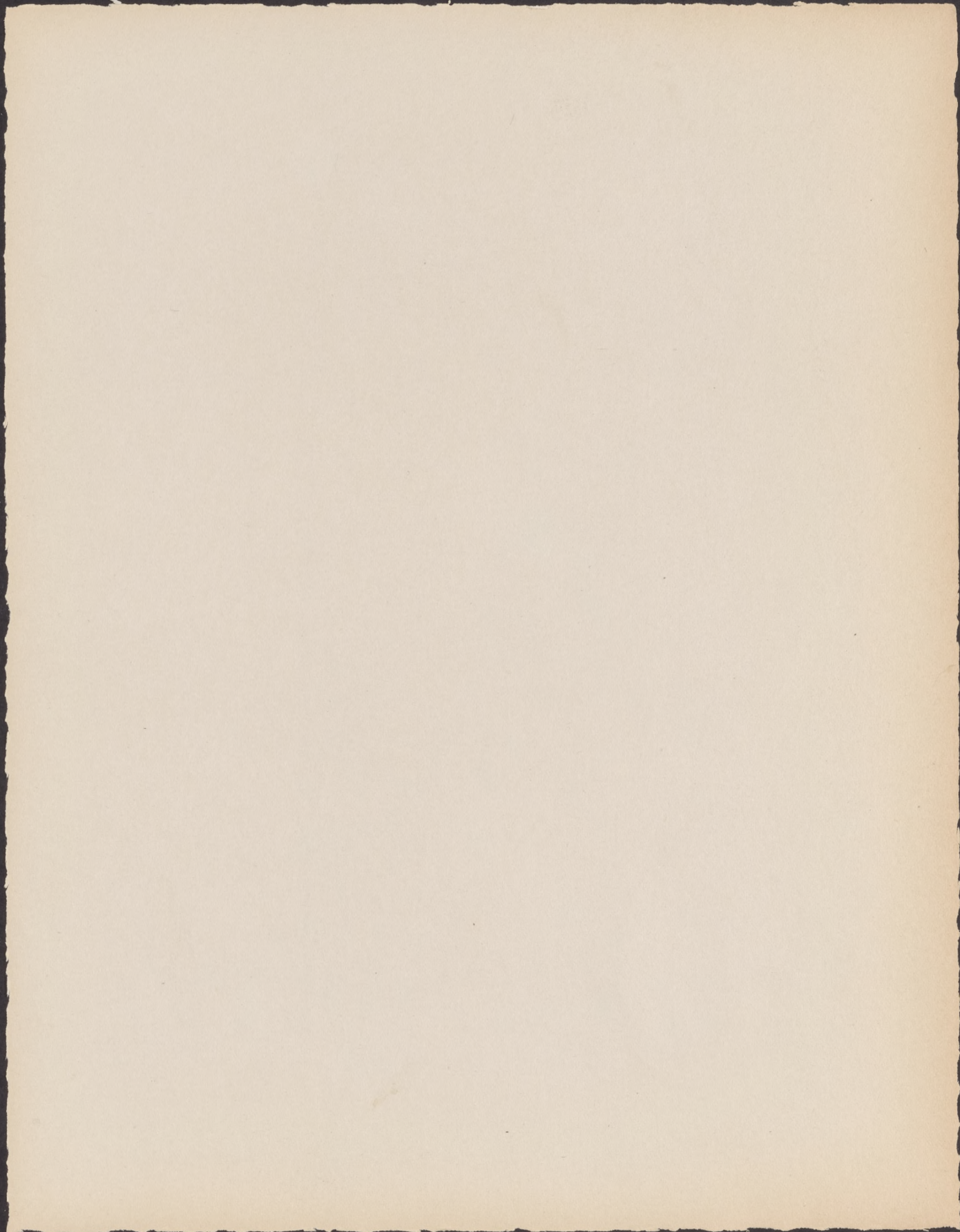
OCT. 9, 1924






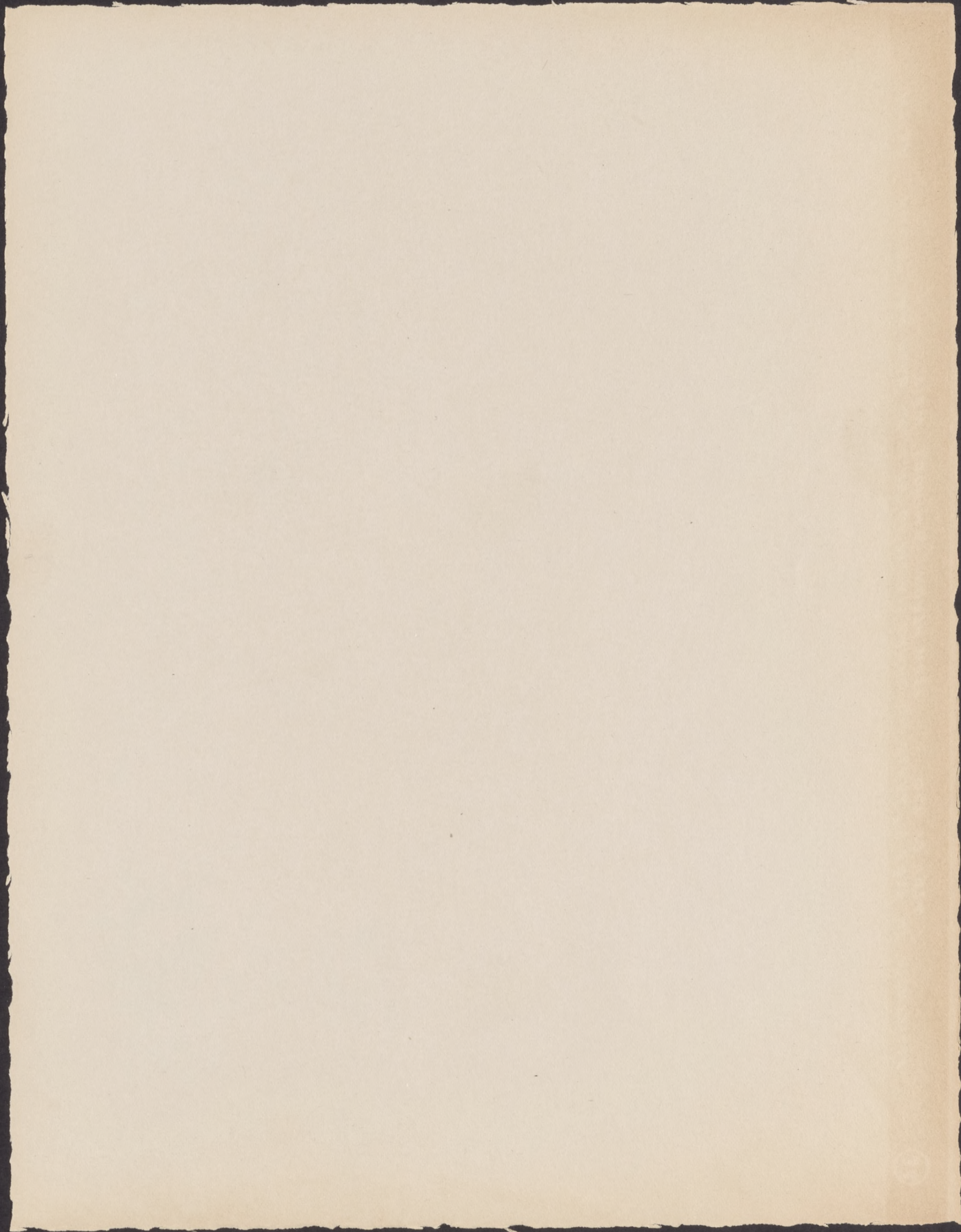
NO 2A FILL IN MORRIS CANAL AT SITE OF "CHANGE BRIDGE" IN LOWER MONTVILLE
VIEW LOOKING SOUTH

OCT. 9, 1924



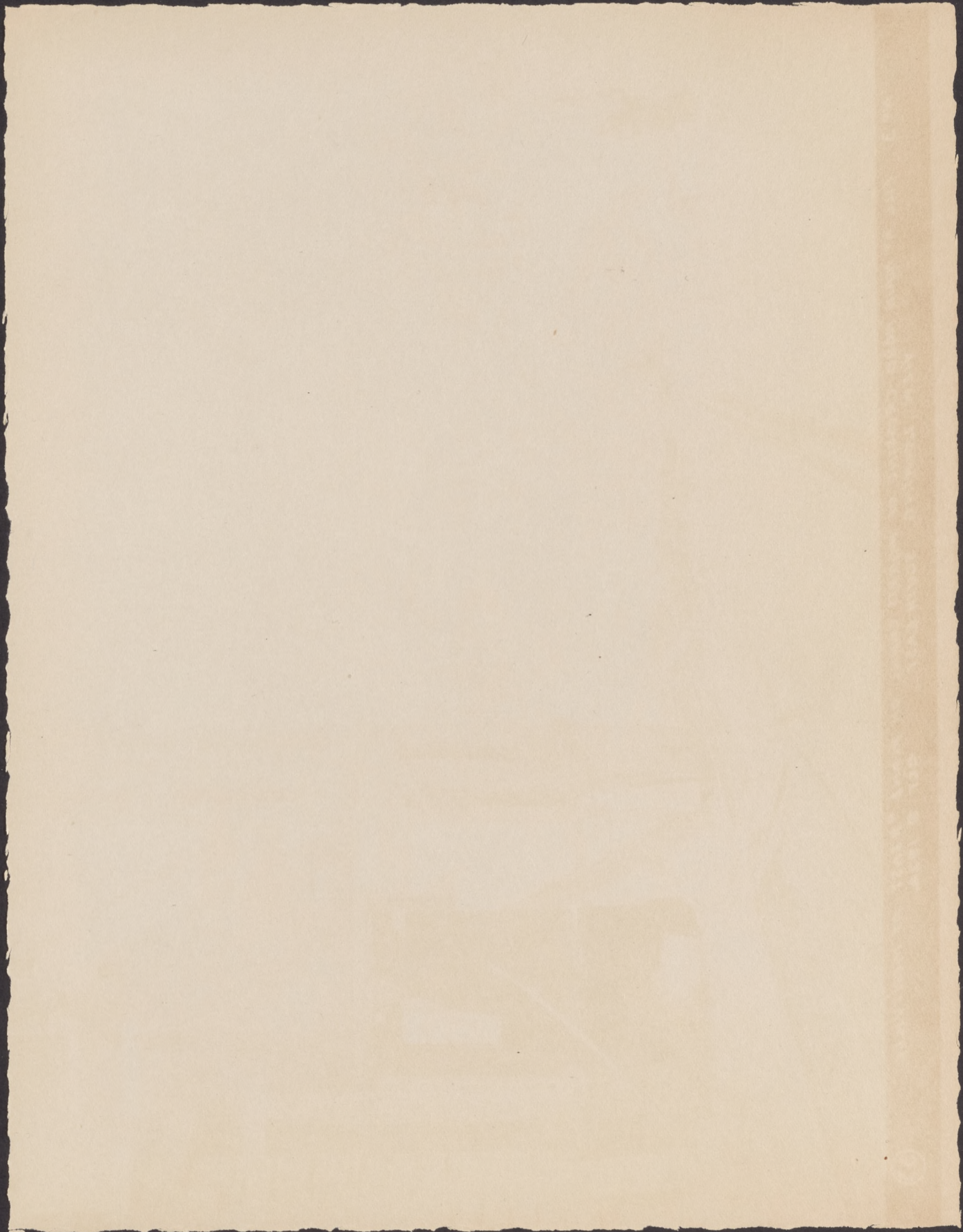


NO. 24 SITE OF ROAD BRIDGE CROSSING MORRIS CANAL BETWEEN TOWACO
AND MORTVILLE. LOOKING NORTH JUNE 13, 1925



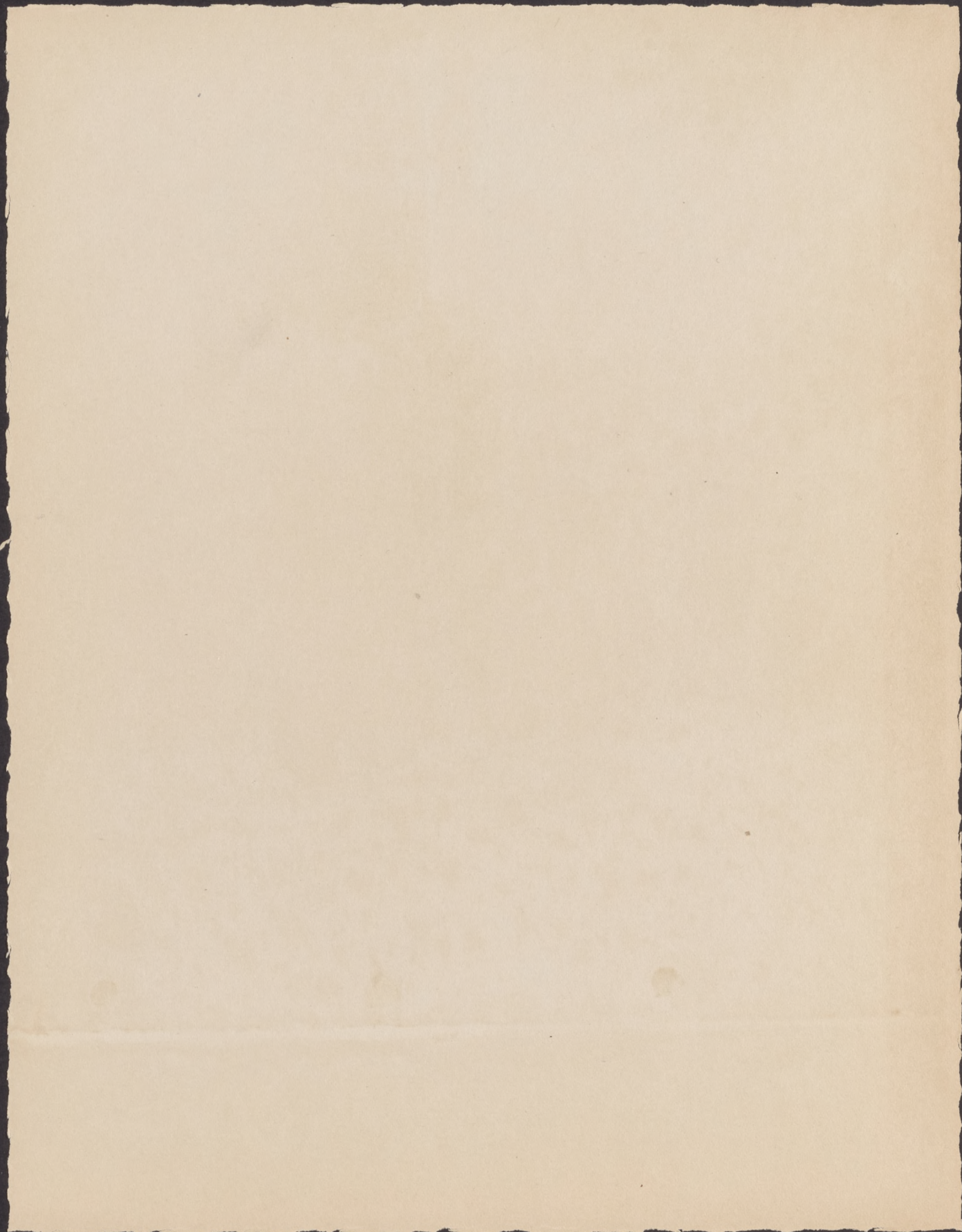


NO 3A FILL AT MAIN ROAD CROSSING OF MORRIS CANAL ON PLANE #9 EAST AT MONTVILLE
VIEW LOOKING NORTH WEST OCT. 10, 1924



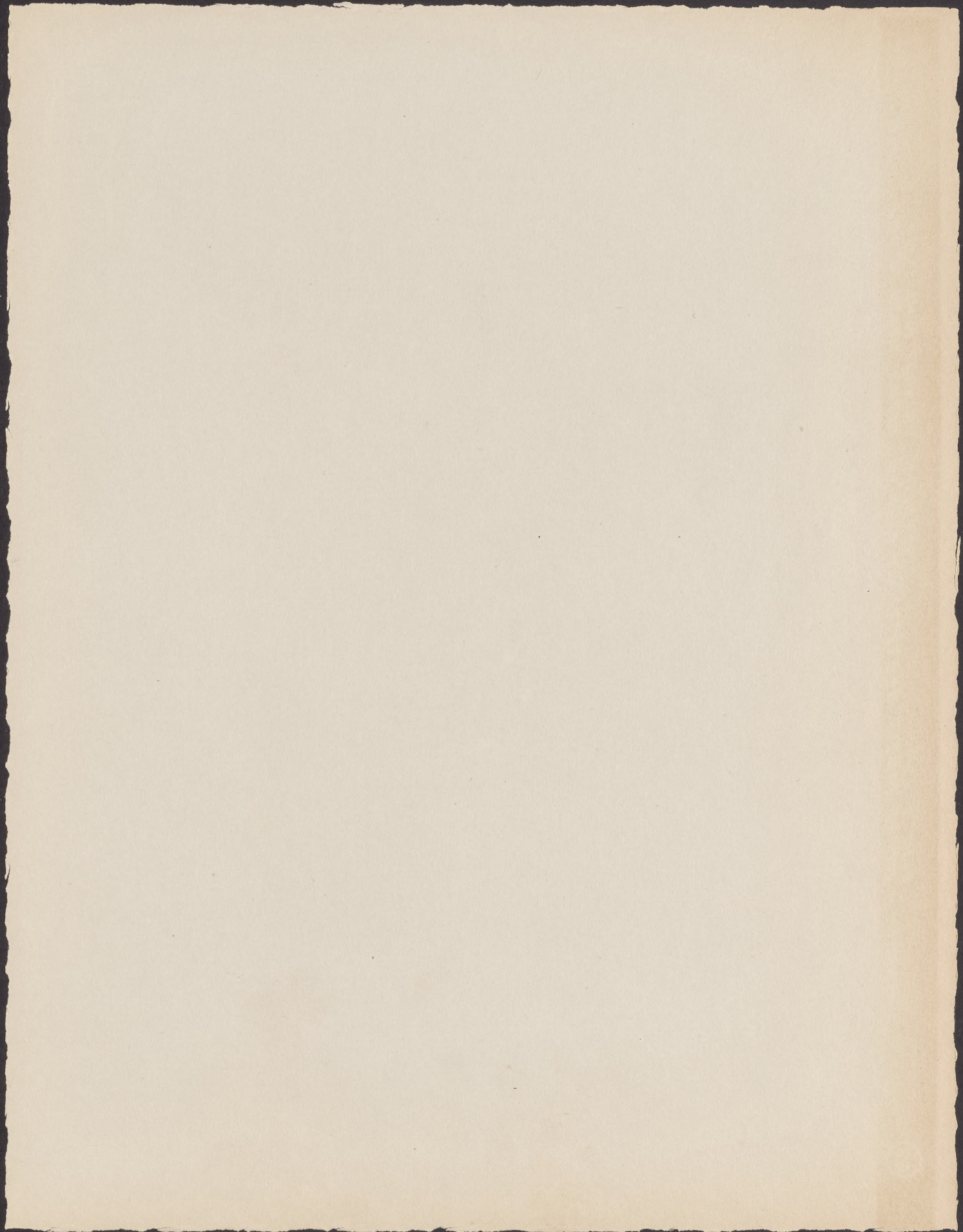


No 3 FILL AT MAIN ROAD CROSSING OF MORRIS CANAL ON PLANE #9 EAST AT MONTVILLE
VIEW LOOKING SOUTH EAST OCT. 9, 1924



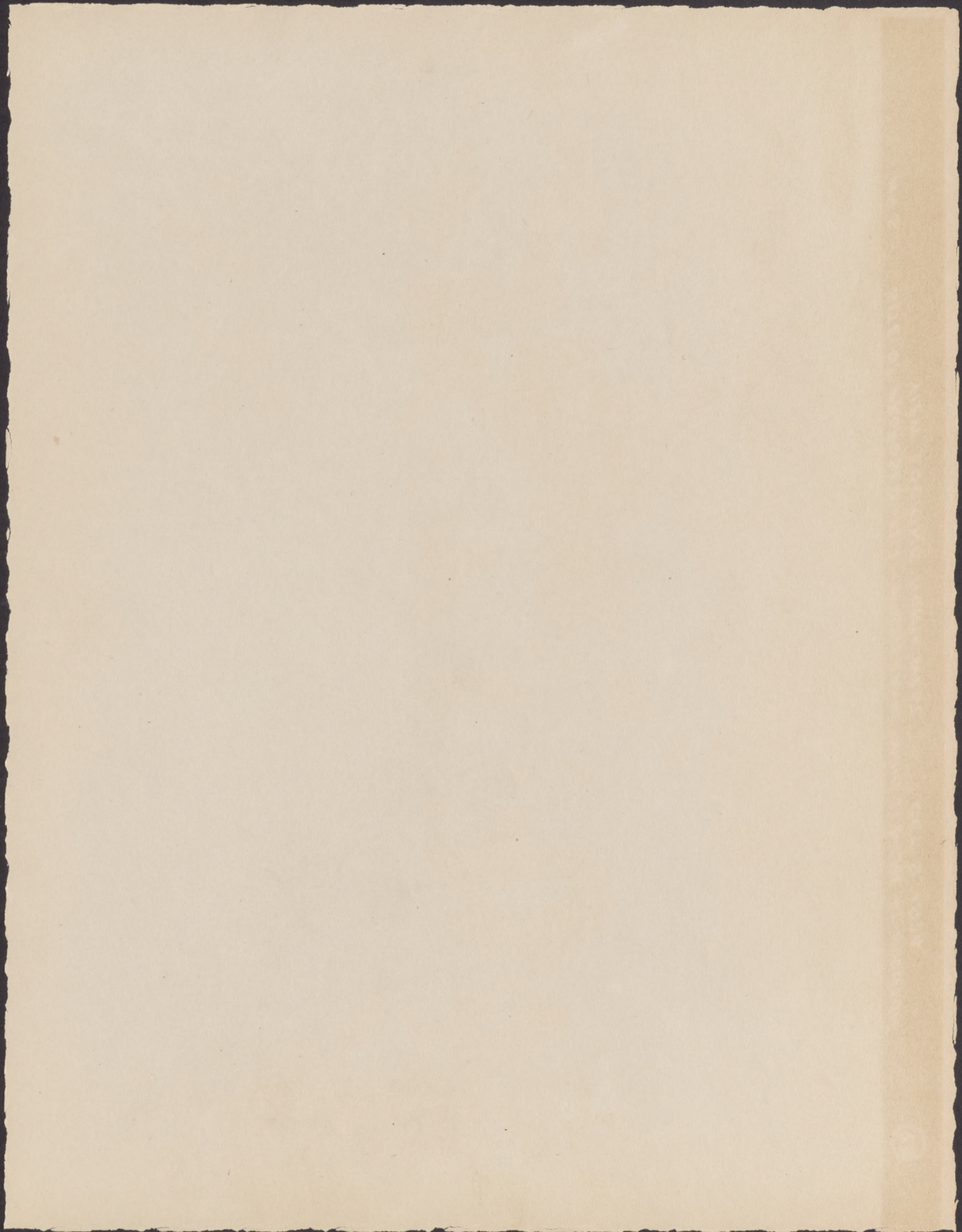


NO 4A FILL IN MORRIS CANAL AT SITE OF VRELAND AVENUE BRIDGE - BOONTON
VIEW LOOKING NORTH WEST
OCT 10, 1924



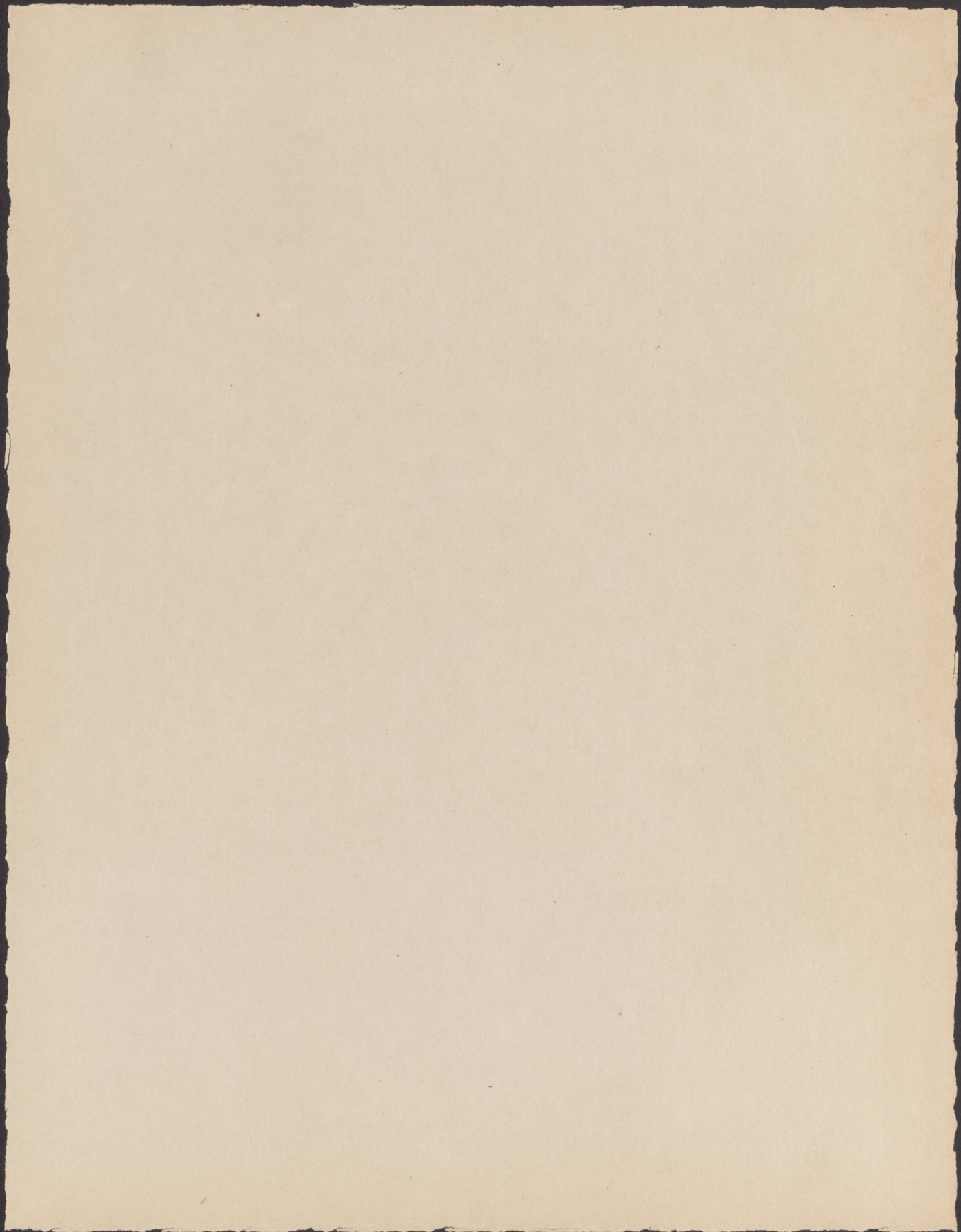


N^o4. FILL IN MORRIS CANAL AT SITE OF VREELAND AVENUE BRIDGE - BOONTON
VIEW LOOKING SOUTHEAST
OCT 9, 1924





NO 5 SITE OF PROPOSED FILL - MORRIS CANAL - MAIN ST BRIDGE AT BOONTON
VIEW LOOKING NORTH WEST OCT 9, 1924.

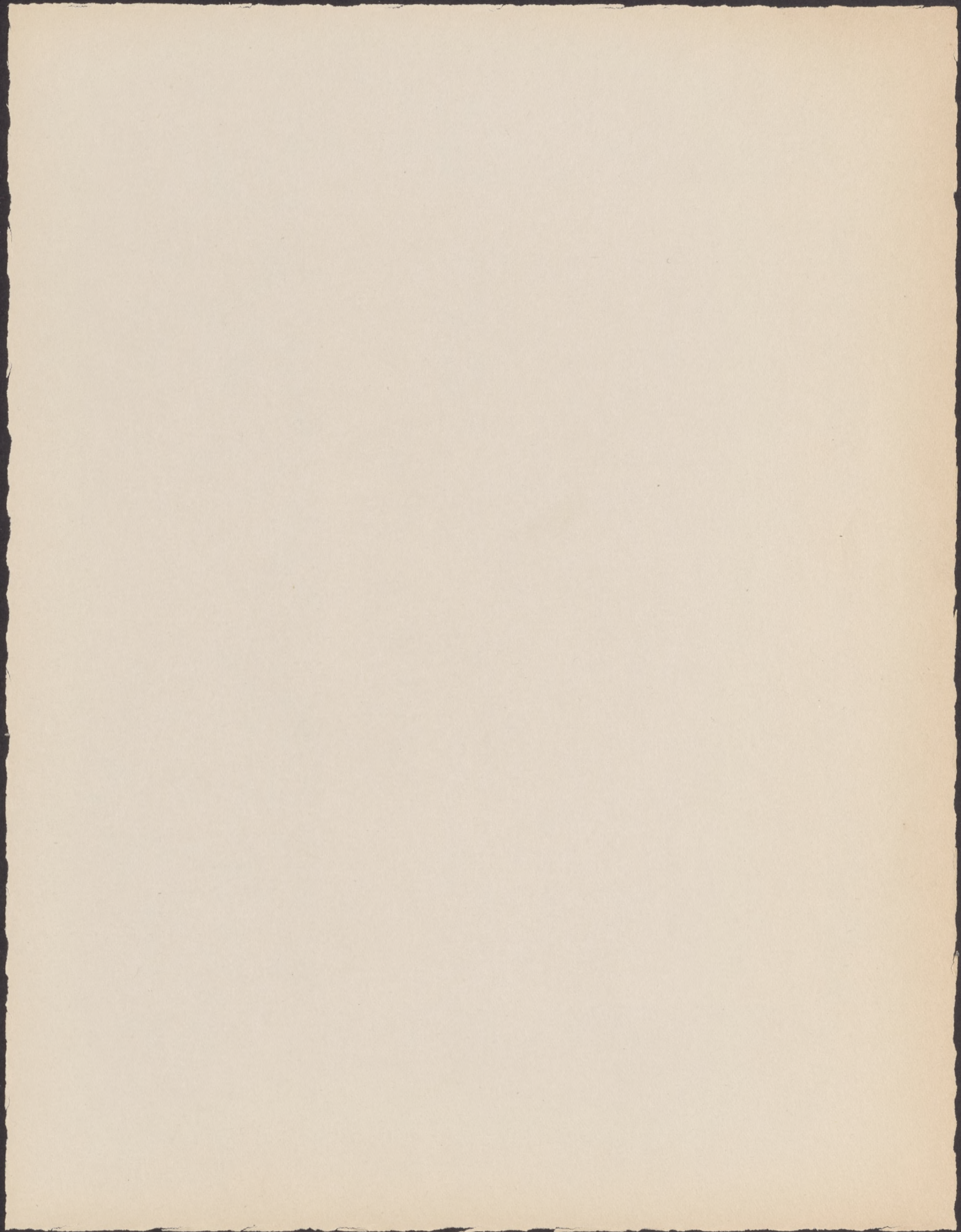


NOTICE

The property of the Morris Canal belongs to the State of New Jersey. Municipalities and individuals are warned that the Canal is no longer a water course, and under the law it may become private property. Sewers and storm-water drains cannot be legally discharged therein. Permits for crossings for water-pipes, sewers, drains, conduits or roads must be obtained from the undersigned before work is begun. Trespassers who disregard this notice will be liable to arrest.

MORRIS CANAL AND BANKING COMPANY
Trustee for the State

HENRY B. KUMMEL, General Manager
State Office Building, Trenton



PLANE NO. 7 EAST

NO. AD...

NOTICE

The property of the Morris Canal belongs to the State of New Jersey. Municipalities and individuals are warned that the Canal is no longer a water course, and under the law it may become private property. Sewers and storm-water drains cannot be legally discharged there. Permits for crossings for water pipes, sewers, drains, conduits or such must be obtained from the Commissioner before work is begun. Trespassers who disregard this notice will be liable to arrest.

ISSUED BY THE STATE ENGINEER, TRENTON, N. J.

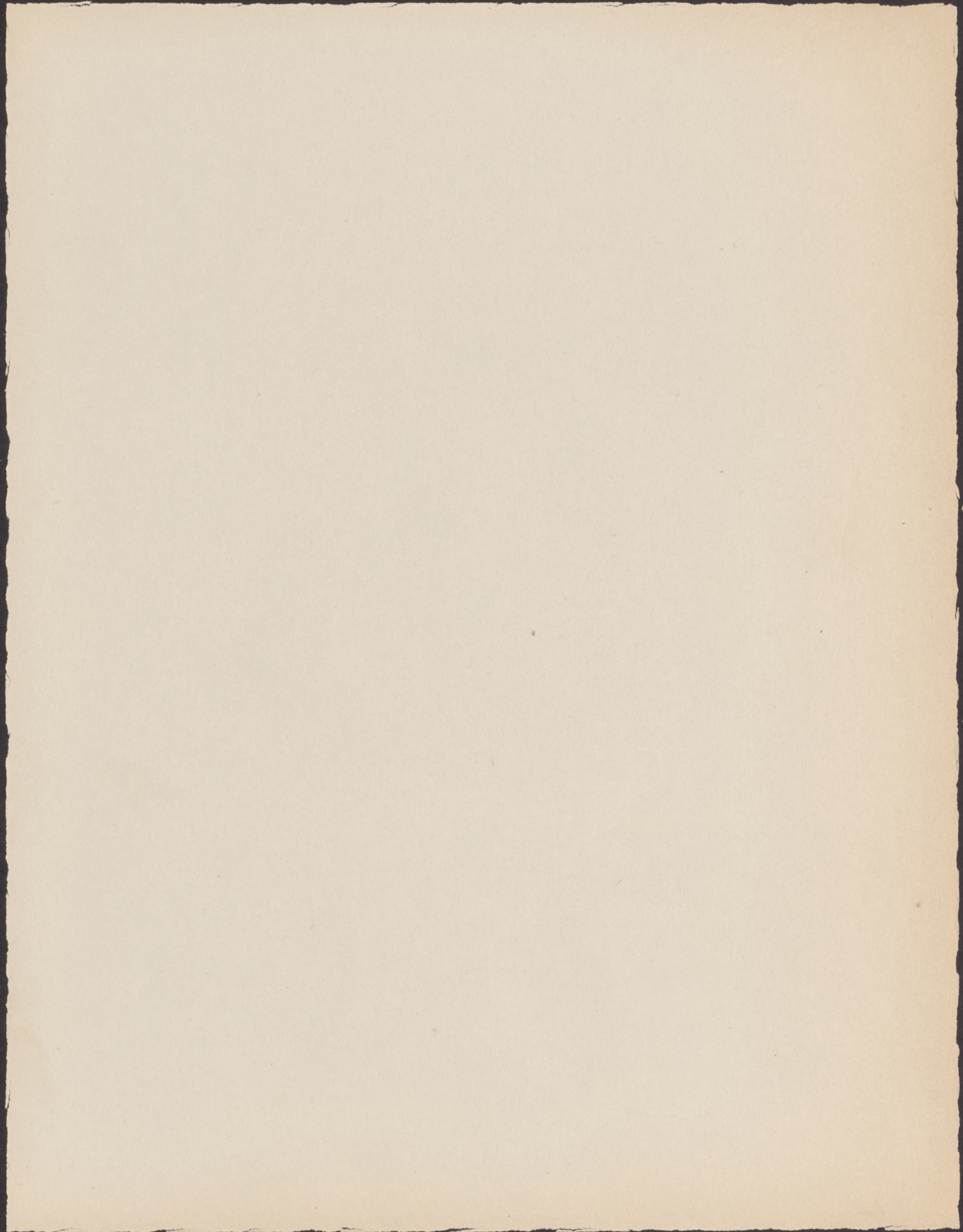
18



NO. 18 OWNERSHIP NOTICE ON PLANE HOUSE NO. 7 EAST AT BOONTON

JUNE 11, 1925

23



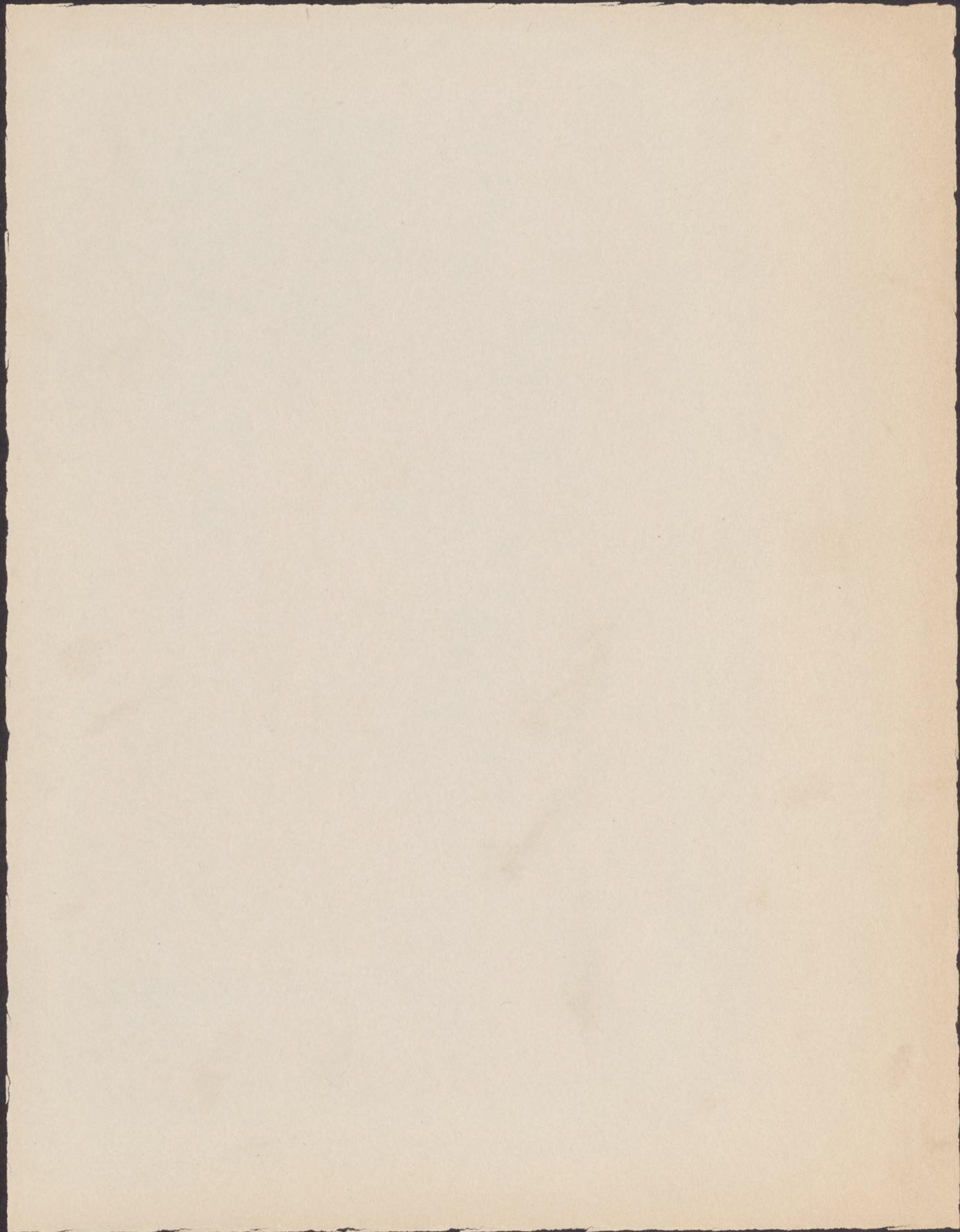


No 6

SEWER CONSTRUCTION AT TOP OF MORRIS CANAL PLANE #7 EAST AT BOONTON
VIEW LOOKING NORTH

OCT. 9, 1924

20



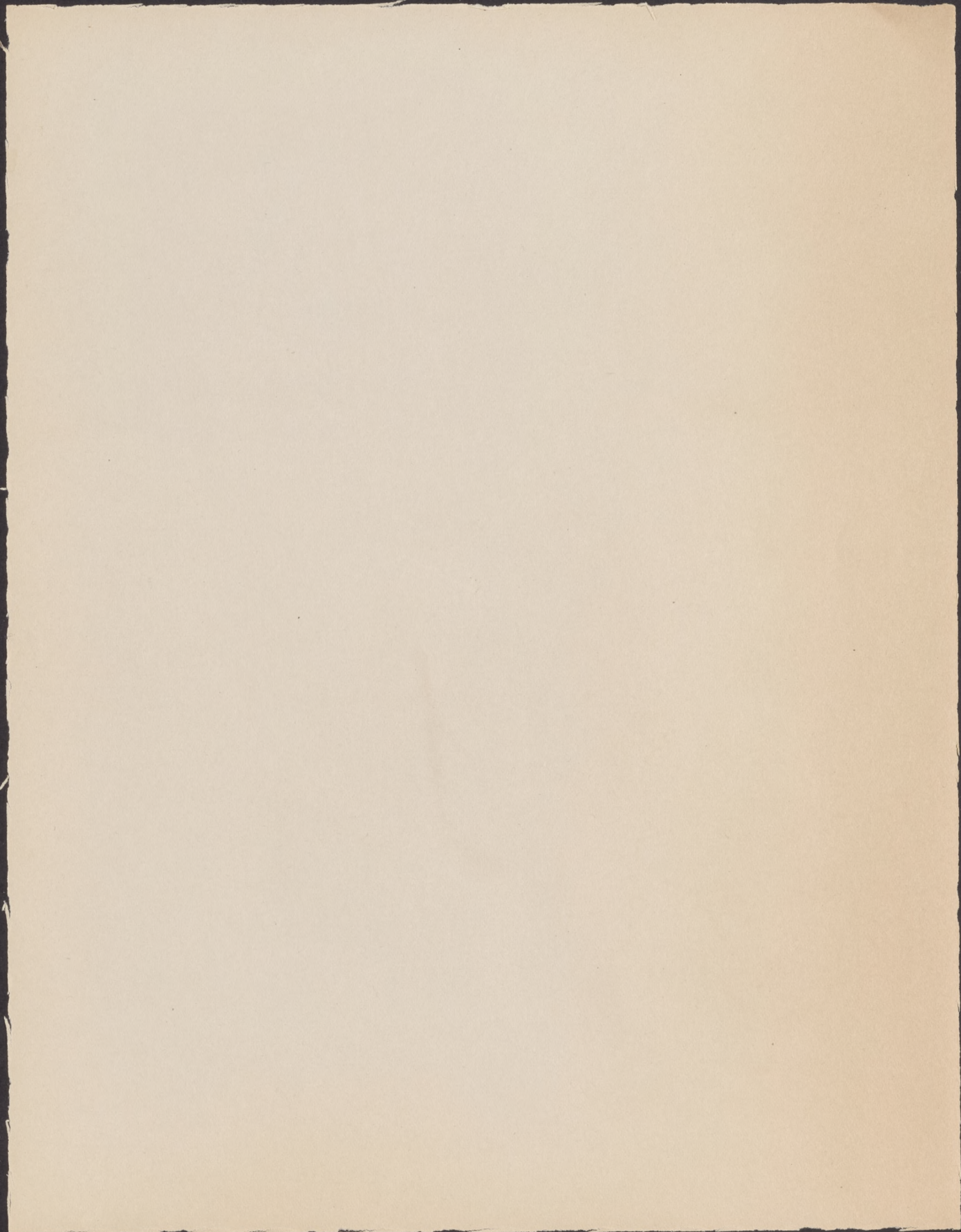


NO 6A

SEWER CONSTRUCTION AT TOP OF MORRIS CANAL PLANE #7 EAST AT BOONTON
VIEW LOOKING SOUTH

OCT. 9, 1924

19





N^o 7 FILL IN LOCK OF MORRIS CANAL WEST OF ROCKAWAY RIVER AT POWERVILLE ABOVE BOONTON
VIEW LOOKING WEST FROM BRIDGE #84 - OCT. 9, 1924

