

# February 2023 Traffic Report

AVIATION DEPARTMENT (Data As Of 3/30/2023 3:16:00 PM)

# REGION



## Revenue Passengers

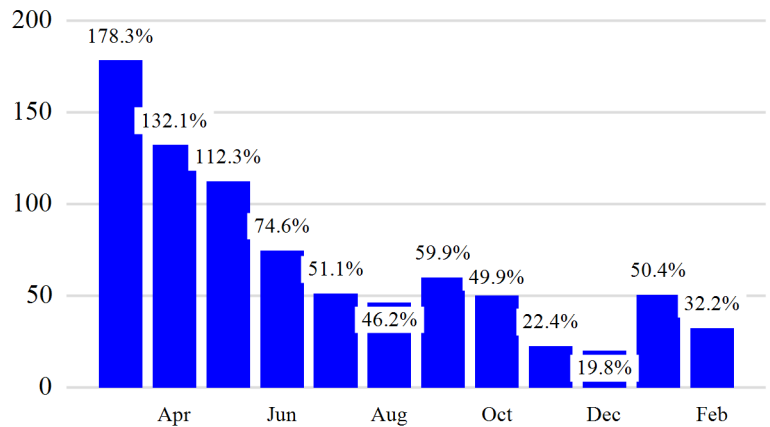
	Curr Month	% Change
	9,583,704	32.2% ▲
Domestic	6,692,678	25.6%
International	2,891,026	50.6%
Non-Revenue	297,629	27.0%

Load Factors	Curr Month
Domestic	72.3%
International	74.3%

72.9% Avg Load Factor

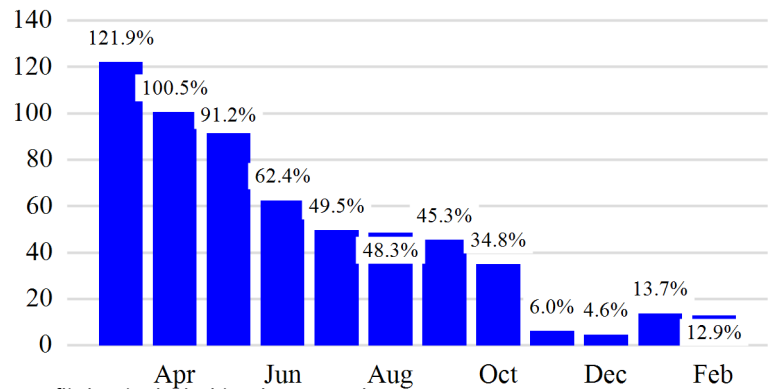
Year over Year % Change in Revenue Passengers - 12 Months



## Total Flights

	Curr Month	% Change
	98,702	13.1% ▲
<b>Excl GA</b>	94,726	12.9% ▲
Domestic	74,539	8.3%
International	20,187	33.6%
Gen Aviation	3,976	19.9%
Cargo Flights*	2,945	-5.4%

Year over Year % Change in Total Flights (Excl GA) - 12 Months

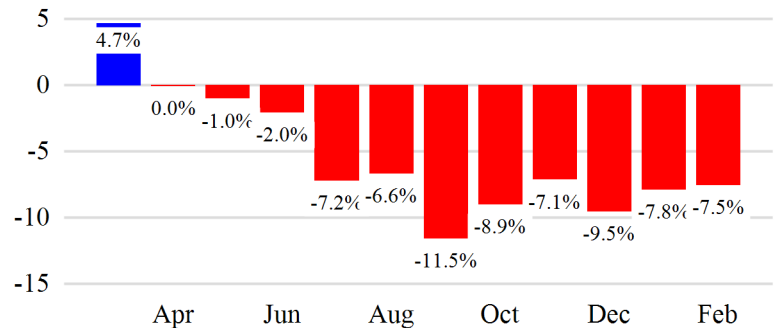


\* Cargo flights included in above totals

## Cargo (Short Tons)

	Curr Month	% Change
	160,168	-7.5% ▼
Domestic	65,439	-10.0%
International	94,729	-5.7%
Mail	9,910	-17.7%

Year over Year % Change in Cargo - 12 Months



### Top 5 Declines in Revenue Passengers by Airline

Airline	Pax Decline	% Decline
FRONTIER AIRLINES	(10,066)	-21.0%
QATAR AIRWAYS	(6,673)	-21.0%
COPA AIRLINES	(1,694)	-6.0%
Avianca El Salvador	(863)	-5.0%
Avianca Costa Rica	(593)	-19.0%

### Top 5 Increases in Revenue Passengers by Airline

Airline	Pax Increase	% Increase
United	565,228	29.0%
DELTA	488,406	29.0%
JETBLUE AIRWAYS	311,782	24.0%
AMERICAN	228,140	24.0%
SPIRIT AIRLINES	72,572	28.0%

## Airport Summary Statistics

### JFK Summary

	Current Month	YoY %
Total Revenue Pax	4,034,709	30.0
Total Flights Including GA	35,205	11.0
Total Cargo (Short Tons)	104,992	-7.7

### EWR Summary

	Current Month	YoY %
Total Revenue Pax	3,369,800	29.0
Total Flights Including GA	32,799	16.0
Total Cargo (Short Tons)	53,057	-6.2

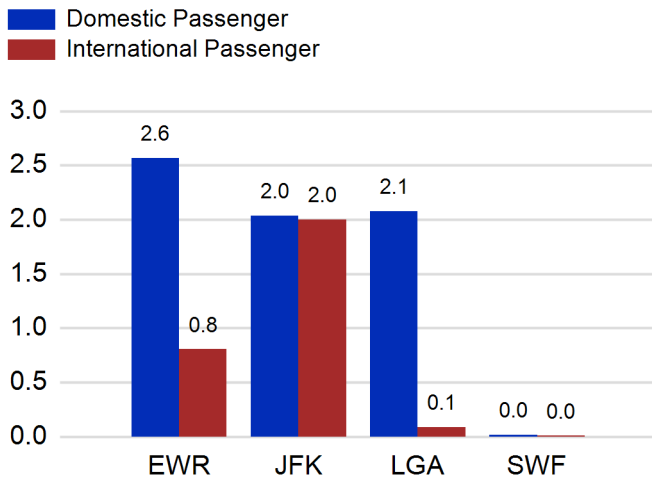
### LGA Summary

	Current Month	YoY %
Total Revenue Pax	2,159,901	40.0
Total Flights Including GA	29,023	13.0
Total Cargo (Short Tons)	480	-5.6

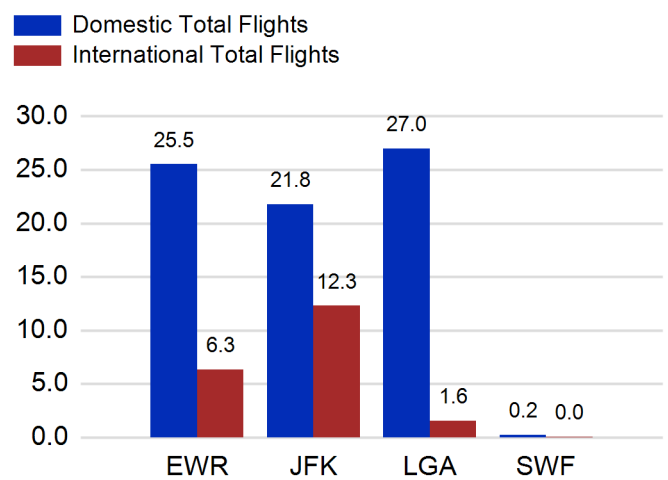
### SWF Summary

	Current Month	YoY %
Total Revenue Pax	19,294	17.0
Total Flights Including GA	1,675	-10.0
Total Cargo (Short Tons)	1,639	-27.2

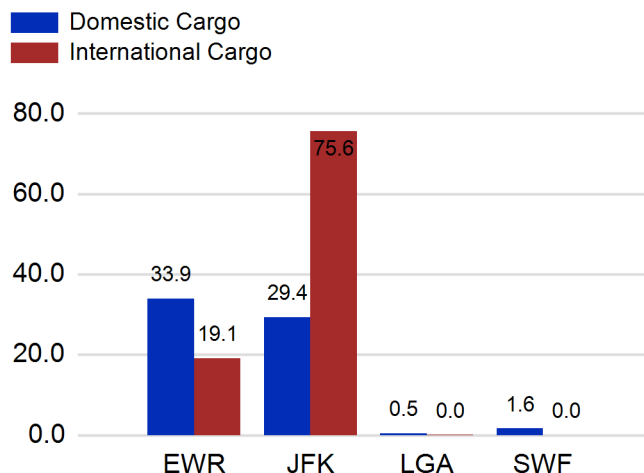
### Total Passengers by Airport (Millions)



### Total Flights by Airport (Thousands)



### Total Cargo by Airport (Thousands of Short Tons)



### 12 Months Ending Passenger & Freight Statistics

#### Top 20 Airlines Ranking by Passengers & Freight: 12 Months Ending Feb 2023

Airline Name	Domestic	International	Total Pax	% of Tot	Airline Name	Short Tons	% of Tot
United	25,514,789	7,303,555	32,818,344	24.51%	FEDERAL EXPRESS	396,169	17.26%
DELTA	25,060,188	5,007,459	30,067,647	22.45%	UNITED PARCEL	203,761	8.88%
JETBLUE AIRWAYS	16,128,737	6,042,130	22,170,867	16.55%	United	190,023	8.28%
AMERICAN	14,678,331	3,458,430	18,136,761	13.54%	AMERICAN	97,661	4.26%
SPIRIT AIRLINES	4,255,501	0	4,255,501	3.18%	DELTA	96,941	4.22%
SOUTHWEST AIRLINES	3,010,419	0	3,010,419	2.25%	KALITTA AIR LLC	81,835	3.57%
ALASKA AIRLINES	2,410,634	0	2,410,634	1.80%	ABX AIR INC	67,750	2.95%
BRITISH AIRWAYS	0	1,313,112	1,313,112	0.98%	ATLAS AIR	64,485	2.81%
AIR FRANCE	313	1,145,827	1,146,140	0.86%	AIR TRANSPORT INT'L.(BAX Inc.)	54,383	2.37%
EMIRATES AIRLINES	0	1,034,284	1,034,284	0.77%	KOREAN	54,076	2.36%
VIRGIN ATLANTIC	0	866,048	866,048	0.65%	CARGOLUX AIRLINES	52,539	2.29%
LUFTHANSA	0	815,696	815,696	0.61%	BRITISH AIRWAYS	45,504	1.98%
TURKISH AIR	0	738,193	738,193	0.55%	CHINA AIRLINES (CAL)	44,149	1.92%
AIR CANADA	0	689,866	689,866	0.52%	TURKISH AIR	40,893	1.78%
AER LINGUS	0	686,552	686,552	0.51%	VIRGIN ATLANTIC	38,837	1.69%
Avianca Costa Rica	0	677,221	677,221	0.51%	LUFTHANSA CARGO	34,803	1.52%
AIR CANADA	0	587,174	587,174	0.44%	EVA	34,060	1.48%
EL AL	0	554,944	554,944	0.41%	AIR FRANCE	32,817	1.43%
IBERIA	0	488,002	488,002	0.36%	CATHAY PACIFIC	32,537	1.42%
FRONTIER AIRLINES	478,944	0	478,944	0.36%	ASIANA	28,845	1.26%

#### Passengers & Freight by Market - 12 Months Ending

Market	Passengers	Freight (Short Tons)
TRANSATLANTIC	23,238,245	908,302
CANADA	2,809,000	3,155
CARIBBEAN + BERMUDA	7,778,120	13,591
CENTRAL AND SOUTH AMERICA	4,053,040	61,002
DOMESTIC	89,758,687	965,643
MEXICO	2,343,847	14,236
TRANSPACIFIC	1,568,098	320,328
PUERTO RICO	2,375,929	8,410

### Additional Data

#### Airline Schedules (ADI): Non-Stop Destinations

	Region	Flights (Daily)	Cities
Domestic	Domestic	2550.4	110
	Puerto Rico	37.3	3
	<b>Total</b>	<b>2,587.7</b>	<b>113.00</b>
International	Canada	171.2	8
	Caribbean & Bermuda	141.7	25
	Central & South America	66.8	16
	Mexico	49.1	6
	Trans-Atlantic	270.0	50
	Trans-Pacific	27.3	10
	<b>Total</b>	<b>726.1</b>	<b>115.00</b>
<b>Total</b>	<b>3,313.8</b>	<b>228.00</b>	

#### Airline Schedules (ADI): Carriers & Aircraft Type

	Aircraft Type	Flights (Daily)	Carriers
Domestic	Commuter	970.2	5
	Narrow Body	1552.6	10
	Wide Body	64.8	4
	<b>Total</b>	<b>2,587.7</b>	<b>19.00</b>
International	Commuter	159.5	5
	Narrow Body	279.9	22
	Wide Body	286.8	54
	<b>Total</b>	<b>726.1</b>	<b>81.00</b>
<b>Total</b>	<b>Total</b>	<b>3,313.8</b>	<b>100.00</b>

#### Passenger Demographics (ACI ASQ Surveys - 2021)

Connect		Trip Type		Gender	
Local Origin/Destination	78.6%	Business	14.0%	M	49.6%
Connecting	21.4%	Leisure	86.0%	F	50.4%
Transport Mode		Annual Flights		Residency	
Bus/Shuttle	4.7%	1-2	61.5%	United States	81.0%
Other	18.7%	3-5	24.9%	Other	19.0%
Private/Company Car	37.5%	6-10	9.0%		
Rail/Subway	7.3%	11-20	2.8%		
Rental Car	4.6%	21+	1.8%		
Taxi/Limo	27.2%				

#### Ground Transportation

	Curr Month	% Change		Curr Month	% Change
<i>Paid Parked Cars</i>	284,352	-1.8	<i>Total Air Train Passengers</i>	2,373,606	57.2
<i>GTC Bookings</i>	0		<i>Paid Howard Beach Passengers</i>	109,236	47.9
<i>Airport Coach Passengers</i>	23,457	66.1	<i>Paid Jamaica Passengers</i>	372,958	41.7
<i>Taxis Dispatched</i>	275,870	19.7	<i>Paid EWR Passengers</i>	166,932	54.4
			<i>On-Airport (Unpaid) Passengers</i>	1,724,480	61.9

#### Airlines for American Carriers (USA)

	Curr Month	% Change
<i>Freight:revenue ton miles (000)</i>	0	

#### Regional Airports: Other

	Curr Month	% Change
<i>TEB flight movements</i>	11,826	-0.2
<i>ISP Total passengers</i>	87,299	-19.0
<i>HPN Total passengers</i>	170,857	74.2