

Due to a sinkhole on I-80 eastbound by Exit 34 - NJ 15 in Wharton NJ all lanes are closed. Motorists are advised to follow detour

- Home
- About
- Traffic
- Traffic Map
- Cameras
- Mega Projects
- Travel Links
- FAQs
- Twitter
- 511NJ Partners
- RSS

Popular Travel Routes

Driving times for...

- Toll Roads
- NJ Turnpike Southbound
- GW Bridge to Interchange 18W via express lanes (9 mi.) :10
- GW Bridge to Interchange 18W via local lanes (9 mi.) :10
- Int 18W to Int 14 (7 mi.) :07
- Int 14 to Int 8A (32 mi.) :31
- Int 8A to Int 6 (22 mi.) :20
- Int 6 to Int 1 (50 mi.) :46

Current Incidents

- NJ NY CT
- North Central South
- Select C... Go Clear
- As of 12:48pm, there's a Disabled vehicle on the George Washington Bridge upper level westbound Upper Trans Manhattan Expressway in Manhattan. 1 Center lane blocked.
- As of 12:27pm, there's EMS activity on I-76 eastbound Exit 2 - I-676 in Camden. Left shoulder closed use caution.
- As of 12:36am, there's Emergency construction and a Sinkhole on I-80 eastbound at Exit 34 - NJ 15 in Wharton. All lanes closed and detoured.
- As of 12:24pm, there's Construction on NJ 72 eastbound from Marsha Dr in Stafford Twp to CR 607/Long Beach Blvd in Ship Bottom. All lanes shift until 11:59 PM on March 28,2025.
- As of 12:23pm, there's Construction on NJ 72 westbound from CR 607/Long Beach Blvd in Ship Bottom to Marsha Dr in Stafford Twp. All lanes shift until 11:59 PM

Port Authority of NY&NJ

- EWR LGA JFK

Current Parking Lot Status*

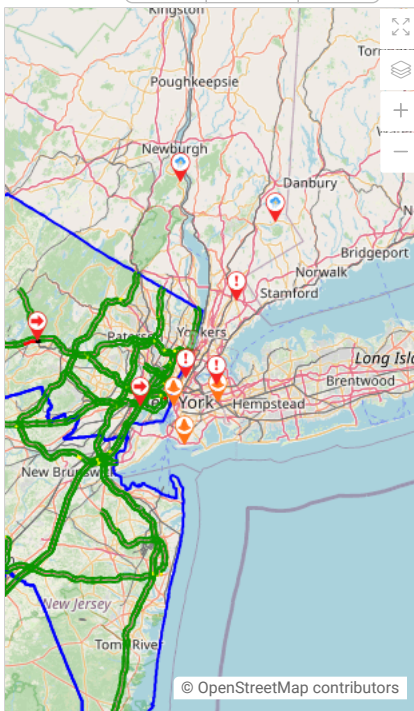
Lot Name	Last Updated	Percent Occupied
Short-Term Parking A	03/17/25 12:40 PM	70%
Short-Term Parking B, C	03/17/25 12:40 PM	58%

Camera - NJ 73 @ US 30



View Mo

Map



NJ Transit



My Transit*

Rail	Bus	Light Rail
Northeast Corridor		On Time
North Jersey Coast		On Time

Arterial Travel Routes

Driving times for...

- Roadway County
- US Route
- US 22
- 22 Eastbound from Country Club Rd. to I-287 (4.4 mi.) :05
- 22 Eastbound from N. Gaston Ave. to US 1&9 (25.1 mi.) :35
- 22 Eastbound from North Dr. to GSP (10 mi.) :15
- 22 Westbound from Glenside Ave. to I-287 (12.1 mi.) :18
- 22 Westbound from NJ 28 to CR 523 (6.5 mi.) :08
- 22 Westbound N. Gaston Ave. to CR 523 (10.3 mi.) :13

Mega Projects



I-295 Direct Connection

- I-295 NB: Exit 26-32 (6 mi.)
- I-295 SB: Exit 32-26 (6 mi.)
- I-295 NB: MP 15.1_TT TO I-76 (12 mi.)
- I-76 EB: Walt Whitman Bridge to NJ 55 (5 mi.)
- NJ 42 NB: NJ 55 to Walt Whitman Bridge via I-76

View More

Safety Message



The 511NJ.org website no longer uses cookies. Information is now stored on your device to enhance user experience.

Got it Learn more



Get connected and go!

Phil Murphy, Governor | Tahesha Way, Esq., Lieutenant Governor
Francis K. O'Connor, Commissioner

56°F

2

[View Detailed EWR Information |](#)

Reserve a parking space

*Handicapped and reserved spaces are available for those with valid permits. Parking information is subject to

	Main/Bergen/Port Jervis	On Time
	Montclair-Boonton	On Time
	Pascack Valley	On Time
	Atlantic City	On Time

JUST ASK alexa

FAQs

Download on the App Store

FAQs

GET IT ON Google Play

FAQs

*NJ TRANSIT updates Travel Alerts 6 AM - 10 PM on weekdays and 10 AM - 7 PM on weekends.

- Home
- About
- Traffic
- Traffic Map
- Cameras
- Mega Projects
- Travel Links
- FAQs
- Twitter
- 511NJ Partners
- RSS

Primary V 1.0.0

[Home](#) [About Us](#) [Privacy Policy](#) [FAQs](#) [Terms of Use](#) [Feedback](#) [Disclaimer](#) [Refresh Website](#)

[Learn more](#)