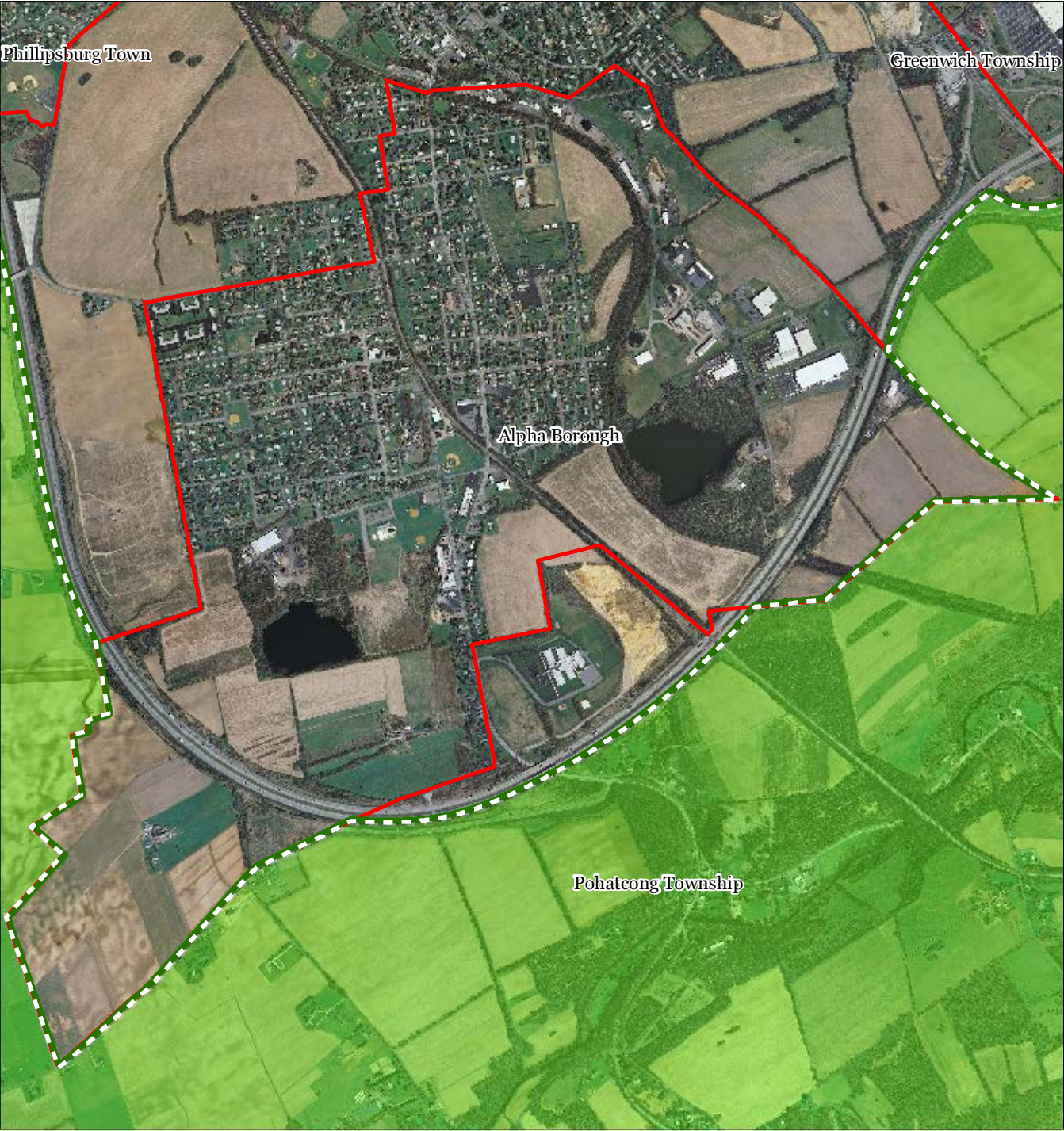
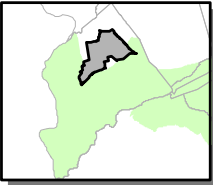
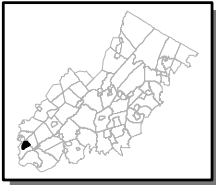


Figure 1: P`Ubb]b[Area



-  Preservation Area
-  Municipal Boundaries

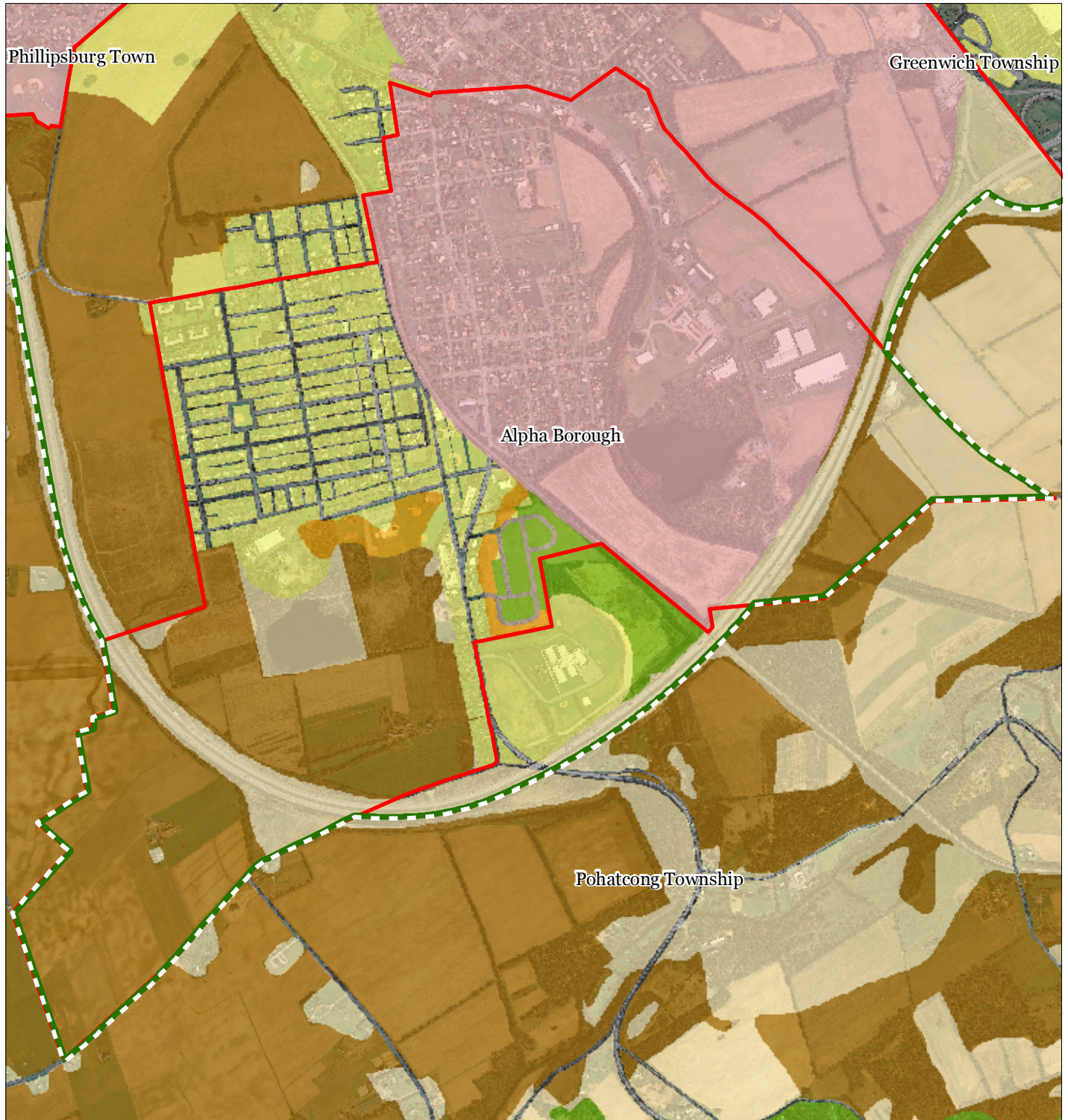
Alpha Borough



1 inch = 0.266 miles



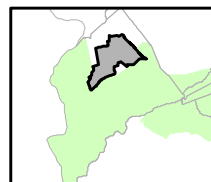
Figure 2: Land Use Capability Map Zones



Regional Master Plan Overlay Zone Designation

Zone	
	Protection
	Existing Community
	Conservation
	Lake Community
	Wildlife Management
	Lakes Greater Than 10 acres
	Preservation Area
	Municipal Boundaries
Sub-Zone	
	Existing Community Environmentally Constrained
	Conservation Environmentally Constrained
	Highlands Center
	Highlands Environmental Resource Site

Alpha Borough

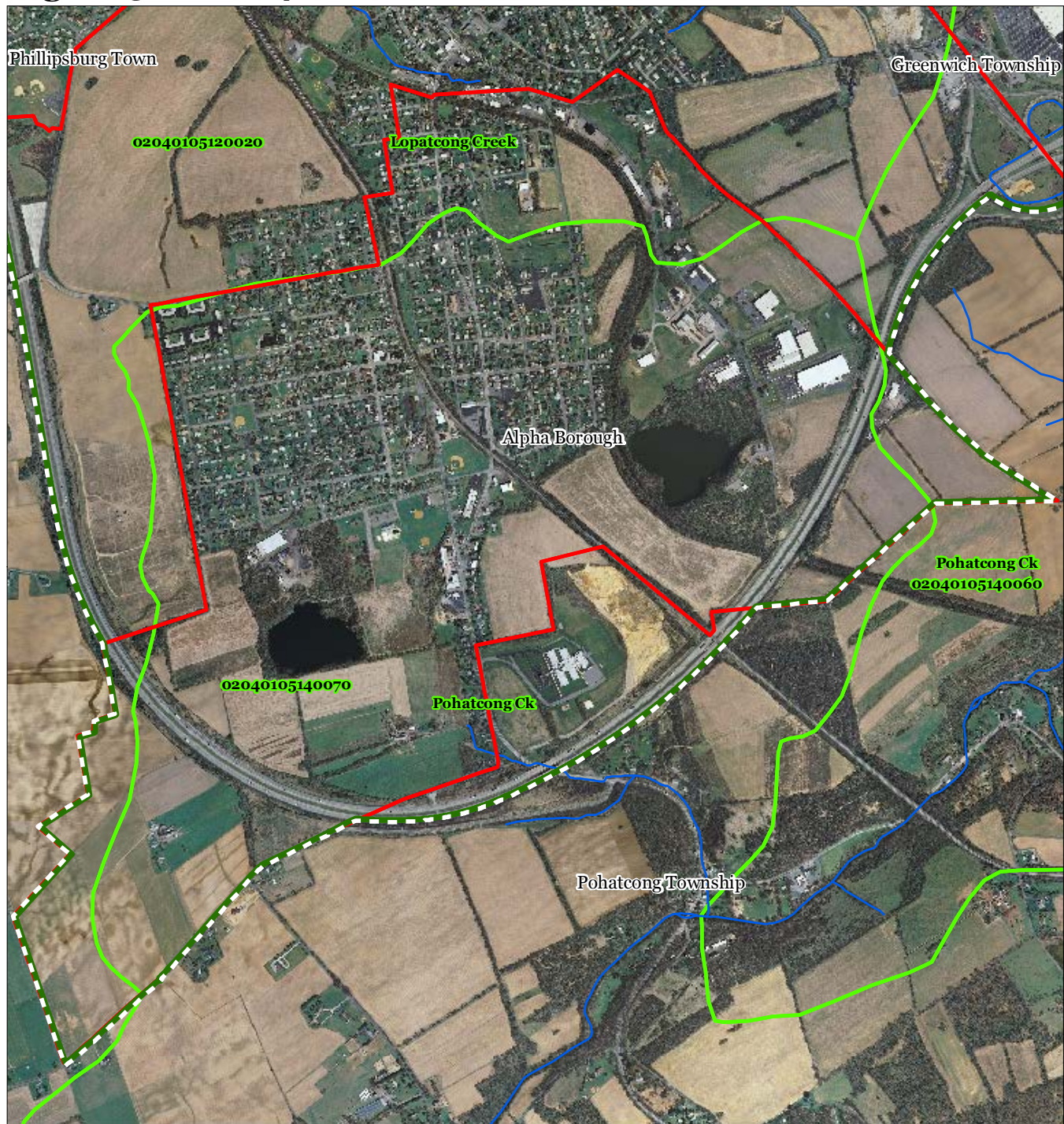






1 inch = 0.266 miles



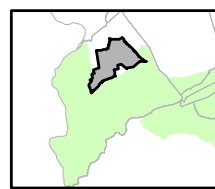
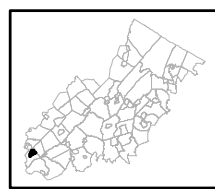
February 2012

Figure 3: HUC 14 Boundaries



-  HUC 14 Subwatersheds
-  Stream Centerlines
-  Preservation Area
-  Municipal Boundaries

Alpha Borough






1 inch = 0.266 miles

**Highlands
Council**
New Jersey

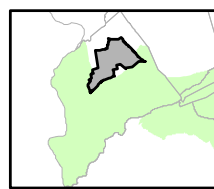
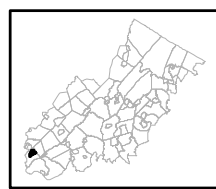


Figure 5: Total Forest Area



-  Forested Areas
-  Preservation Area
-  Municipal Boundaries

Alpha Borough

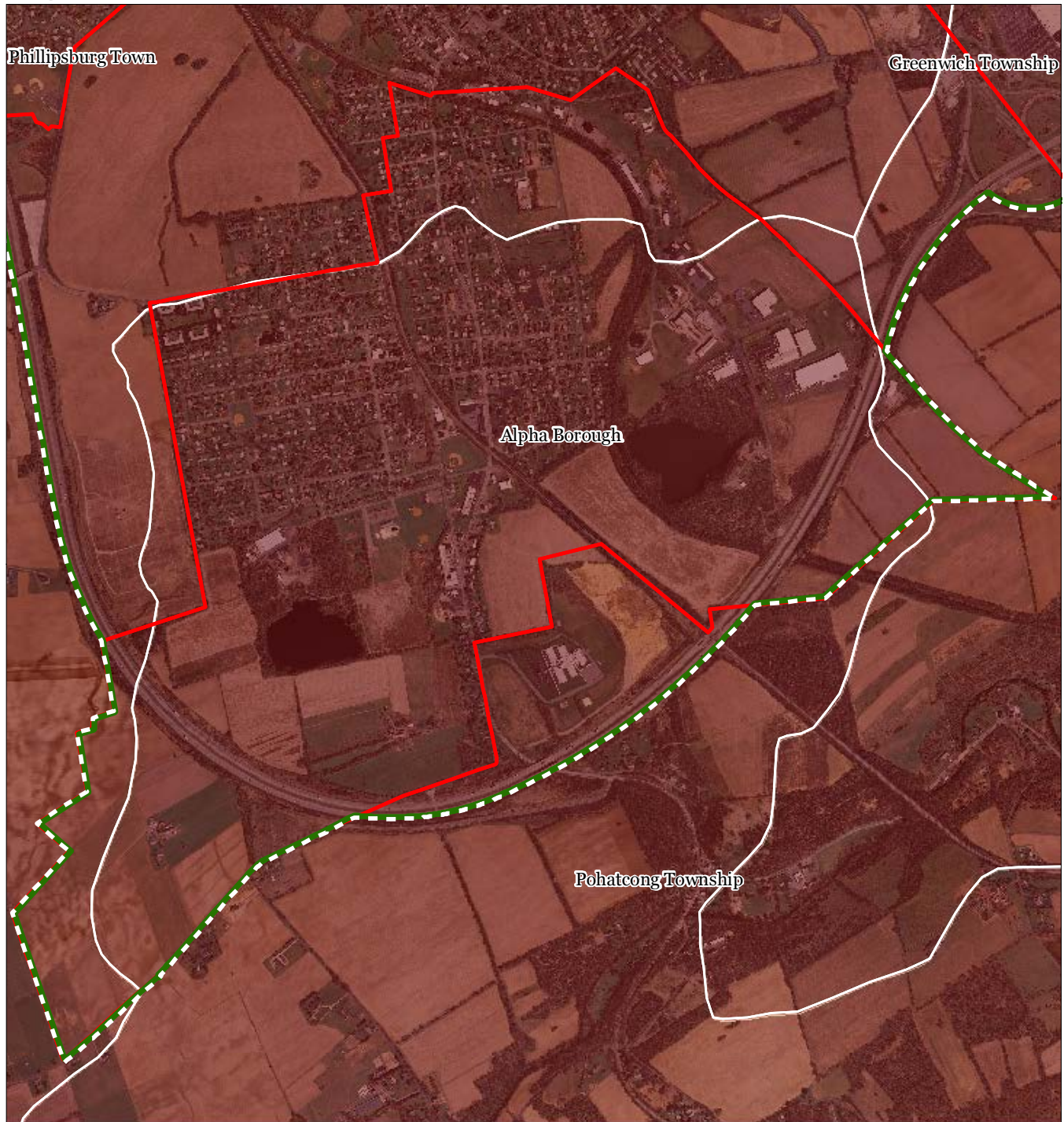


1 inch = 0.266 miles

**Highlands
Council**
New Jersey



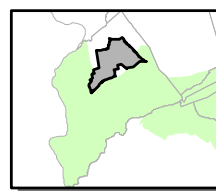
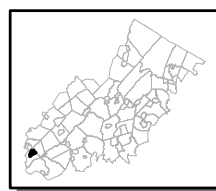
Figure 6: Forest Subwatersheds



Forest Integrity by HUC14 Subwatershed

- Low*
- Moderate*
- High*
- Preservation Area
- Municipal Boundaries

Alpha Borough

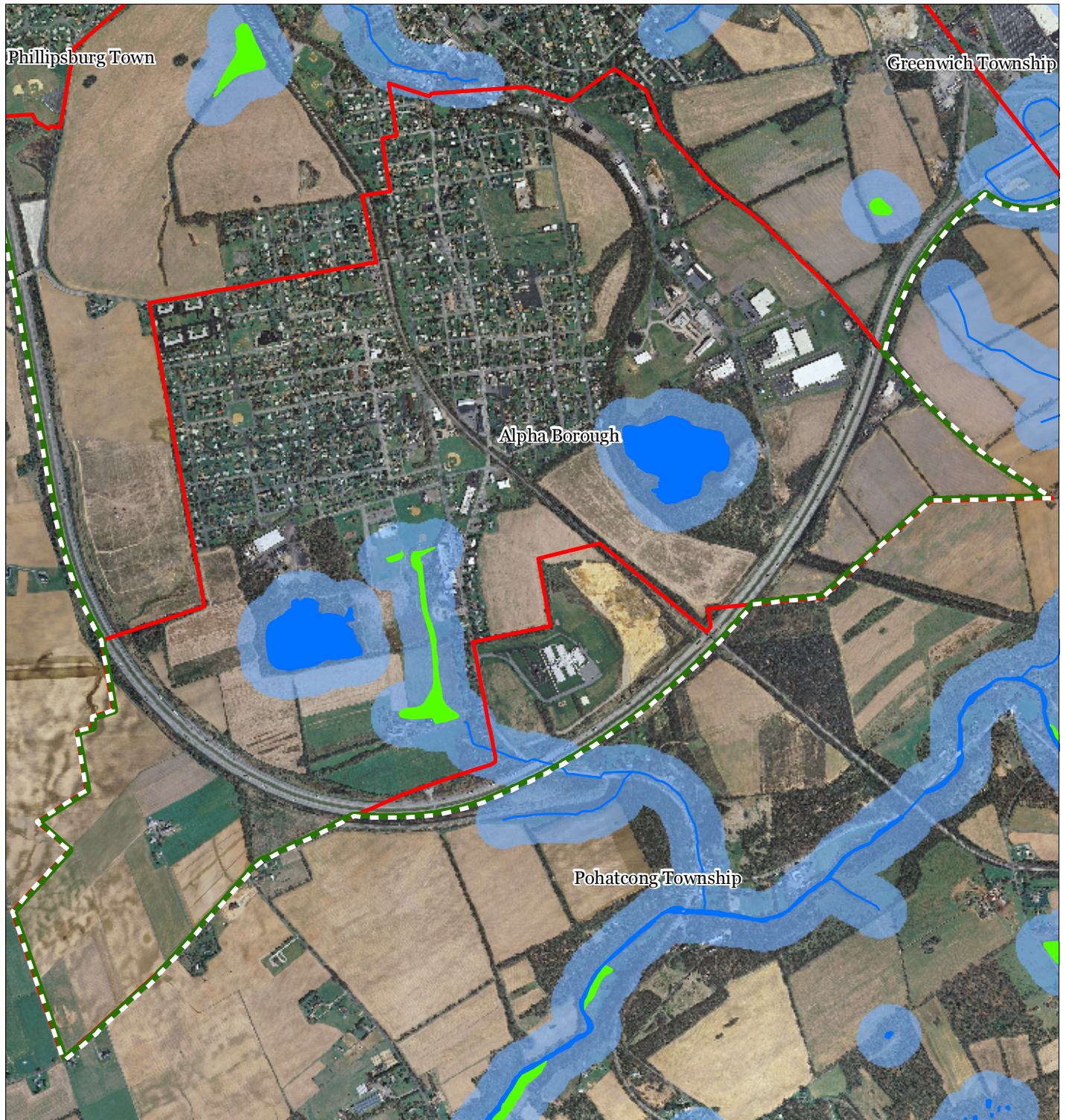


1 inch = 0.266 miles

**Highlands
Council**
New Jersey

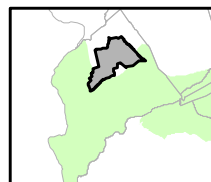
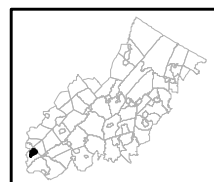


Figure 7: Highlands Open Waters



-  Highlands Open Water Buffers (300ft)
-  Streams
-  Wetlands
-  Quarry Pool
-  Preservation Area
-  Municipal Boundaries

Alpha Borough



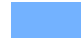


1 inch = 0.266 miles



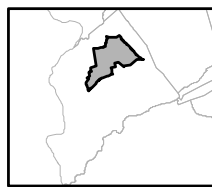
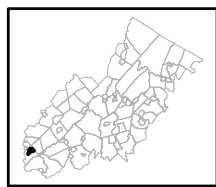
February 2012

Figure 8: Highlands Riparian Area



-  Riparian Area
-  Preservation Area
-  Municipal Boundaries

Alpha Borough

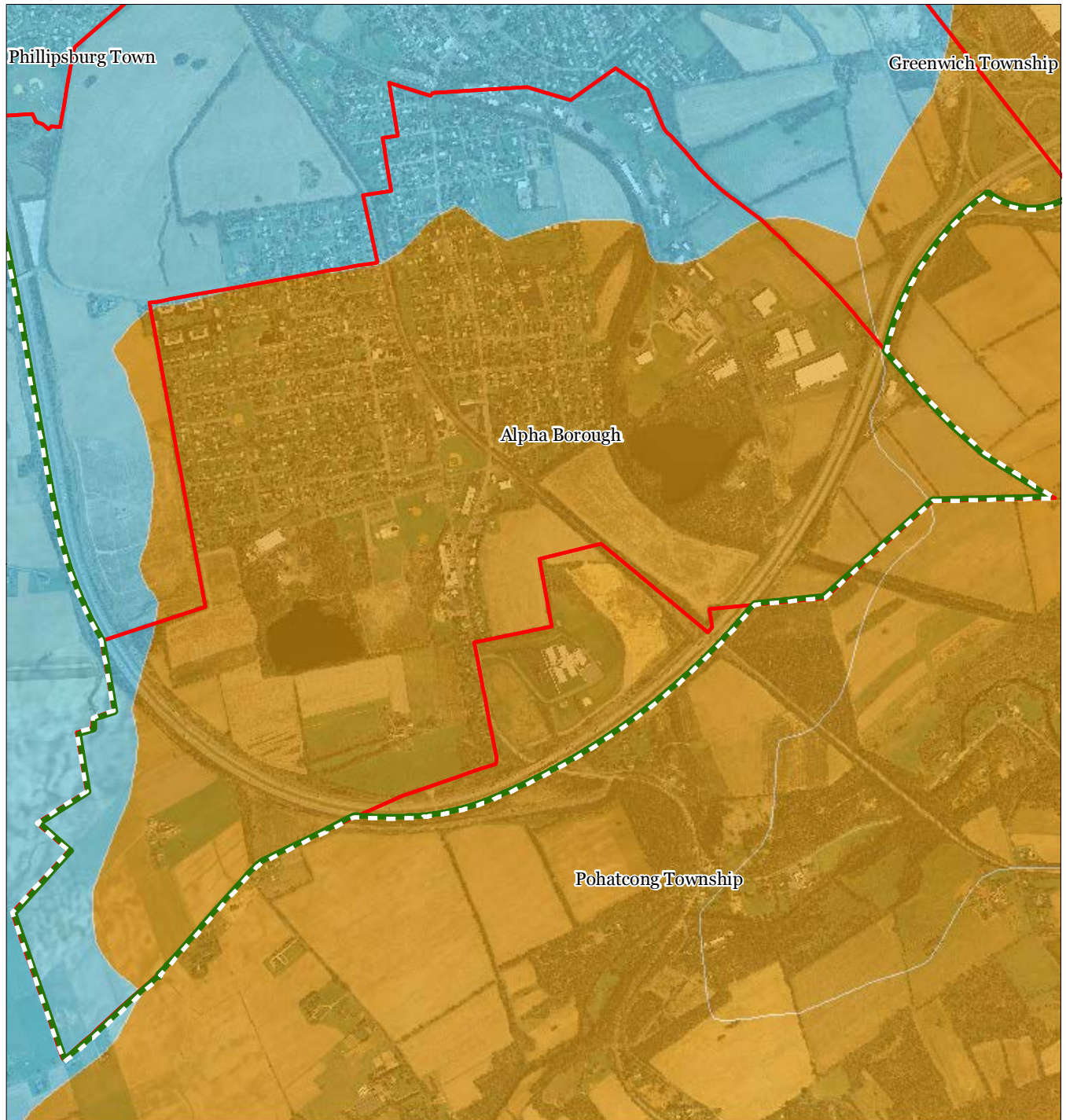


1 inch = 0.266 miles

Highlands Council
New Jersey



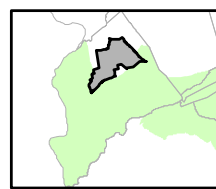
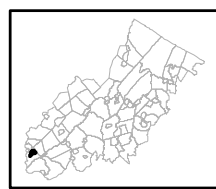
Figure 9: Watershed Values



Watershed Values by HUC14 Subwatershed

- Low*
- Moderate*
- High*
- Preservation Area
- Municipal Boundaries

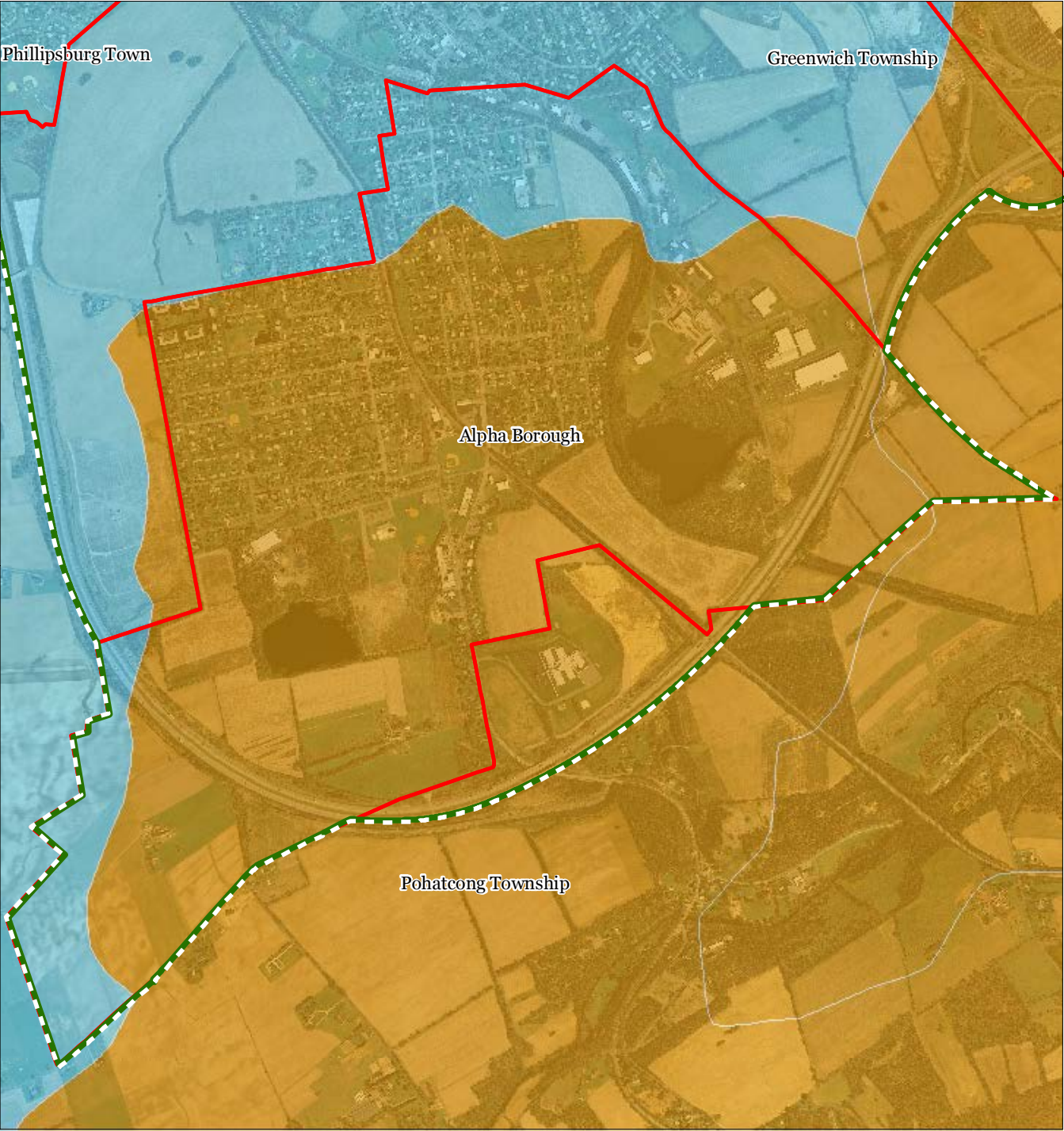
Alpha Borough



1 inch = 0.266 miles



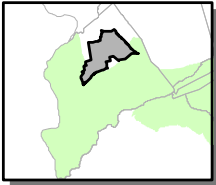
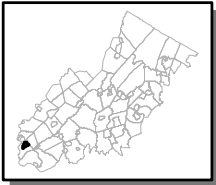
Figure 10: Riparian Integrity



Riparian Integrity by HUC14 Subwatershed

- Low
- Moderate
- High
- Preservation Area
- Municipal Boundaries

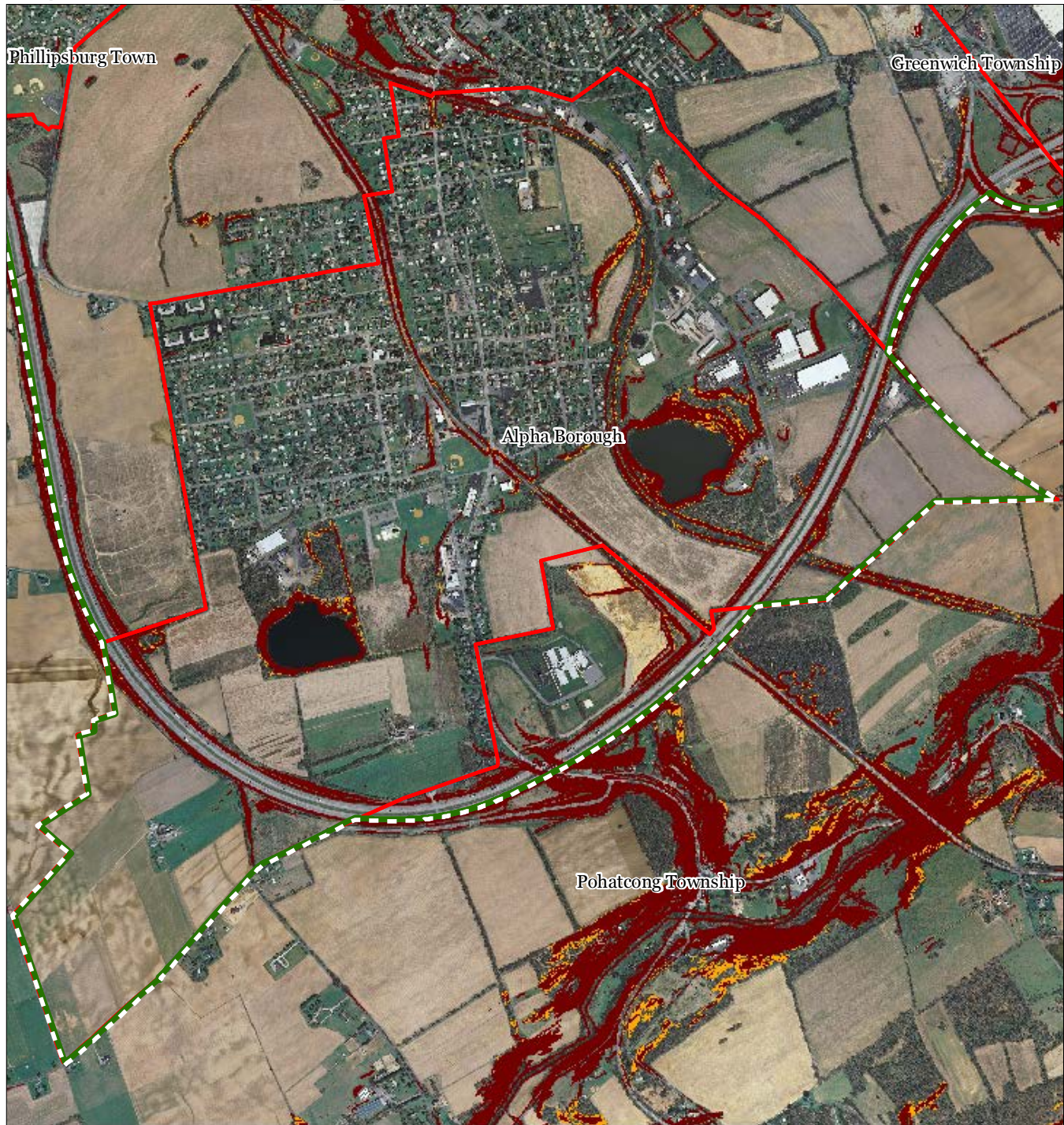
Alpha Borough



1 inch = 0.266 miles



Figure 11: Steep Slope Protection Areas



Steep Slope

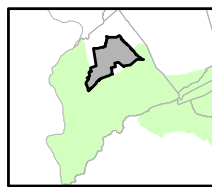
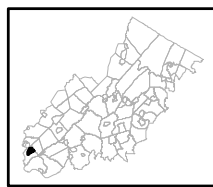
 Moderate

 Severe

 Preservation Area

 Municipal Boundaries

Alpha Borough

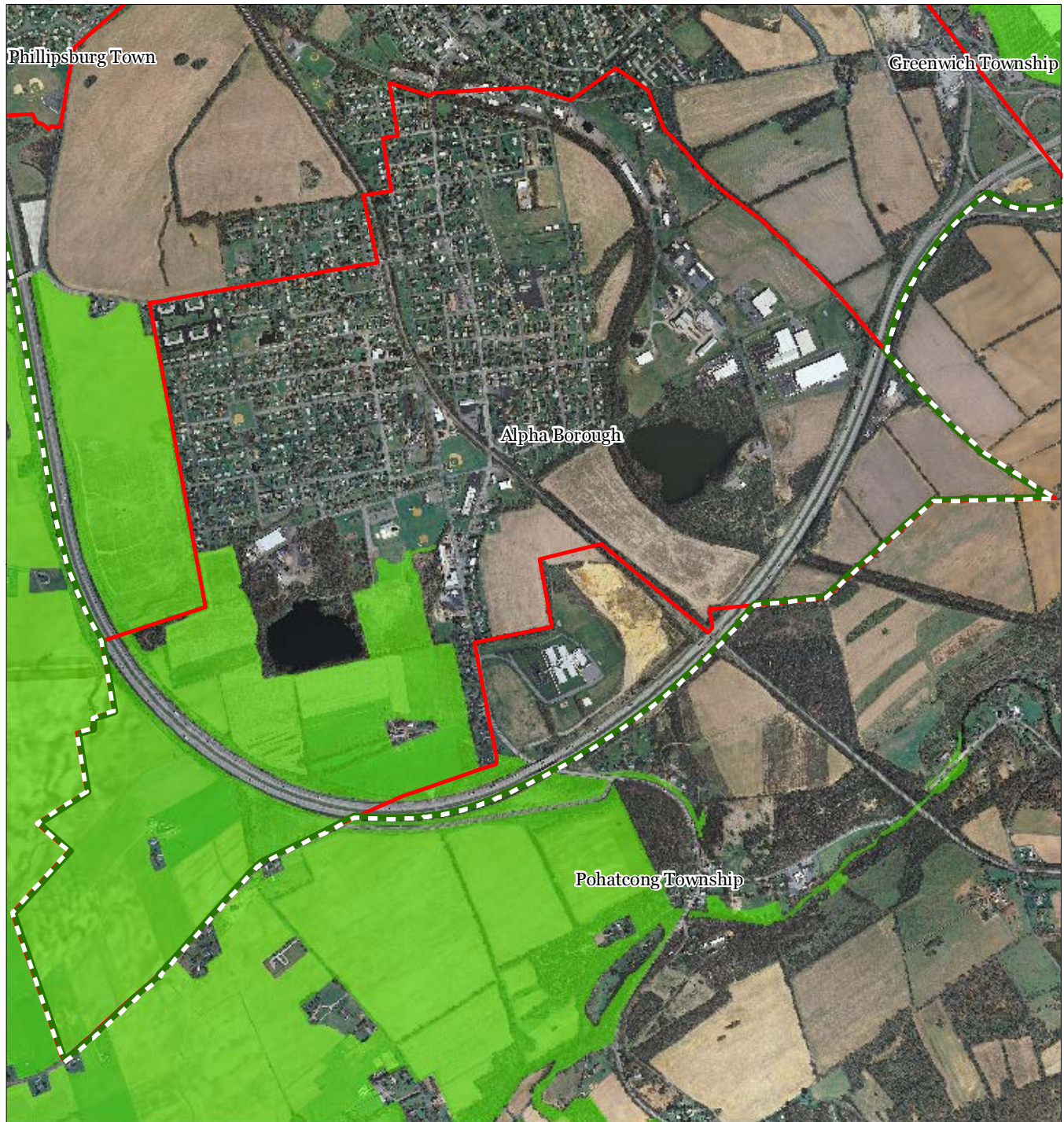





1 inch = 0.266 miles

Highlands Council
New Jersey

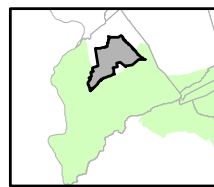


Figure 12: Critical Wildlife Habitat



-  Critical Wildlife Habitat
-  Preservation Area
-  Municipal Boundaries

Alpha Borough

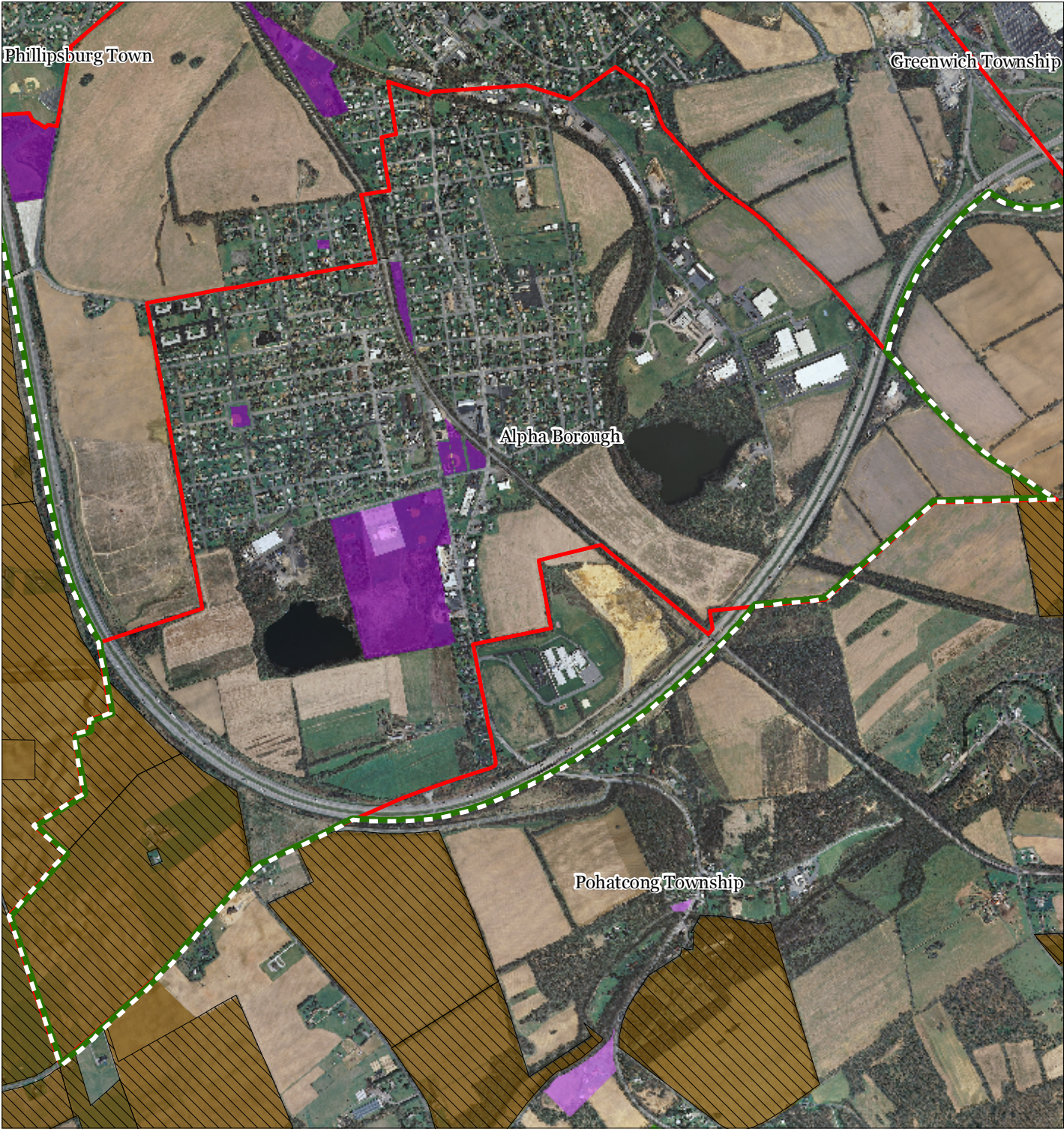


1 inch = 0.266 miles

**Highlands
Council**
New Jersey

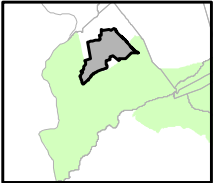


Figure 15: Preserved Lands



- | | |
|---|-------------------------------|
| Preserved Lands | Conservation Easements |
| Federal Open Space | Green Acres |
| State Open Space | SADC Easements |
| County Open Space | SADC Final |
| Municipal Open Space | SADC Preserved |
| Non-Profit/Private Open Space | Municipal Boundaries |
| Water Supply Watershed Lands | Preservation Area |
| Preserved Farmland | |
| Highlands Transfer of Development Lands | |

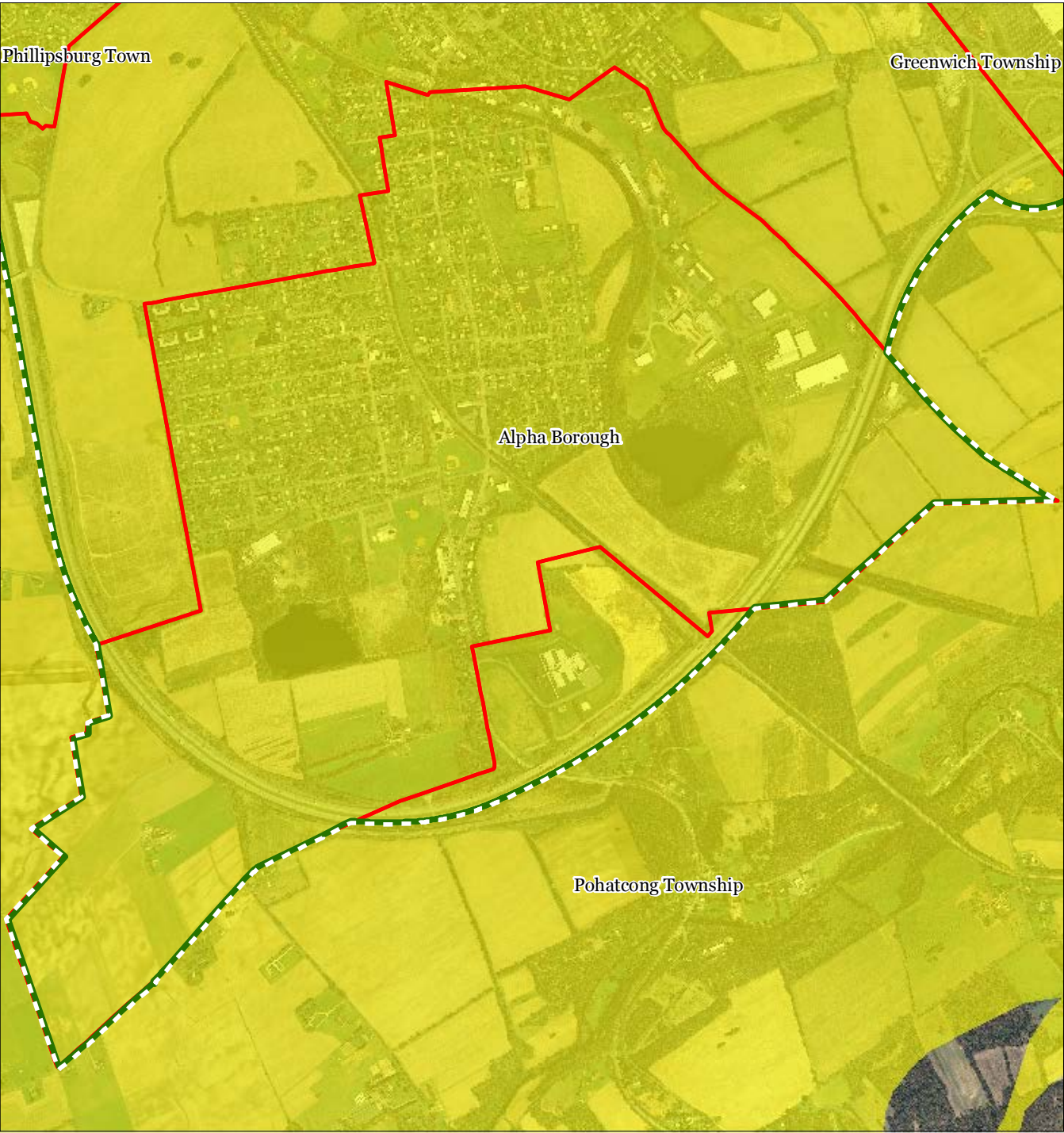
Alpha Borough






1 inch = 0.266 miles

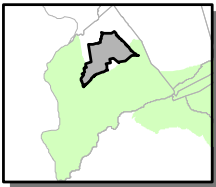
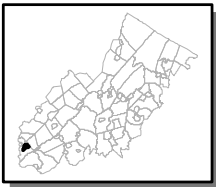


Figure 18: Carbonate Rock Area



-  Carbonate Rock Area
-  Preservation Area
-  Municipal Boundaries

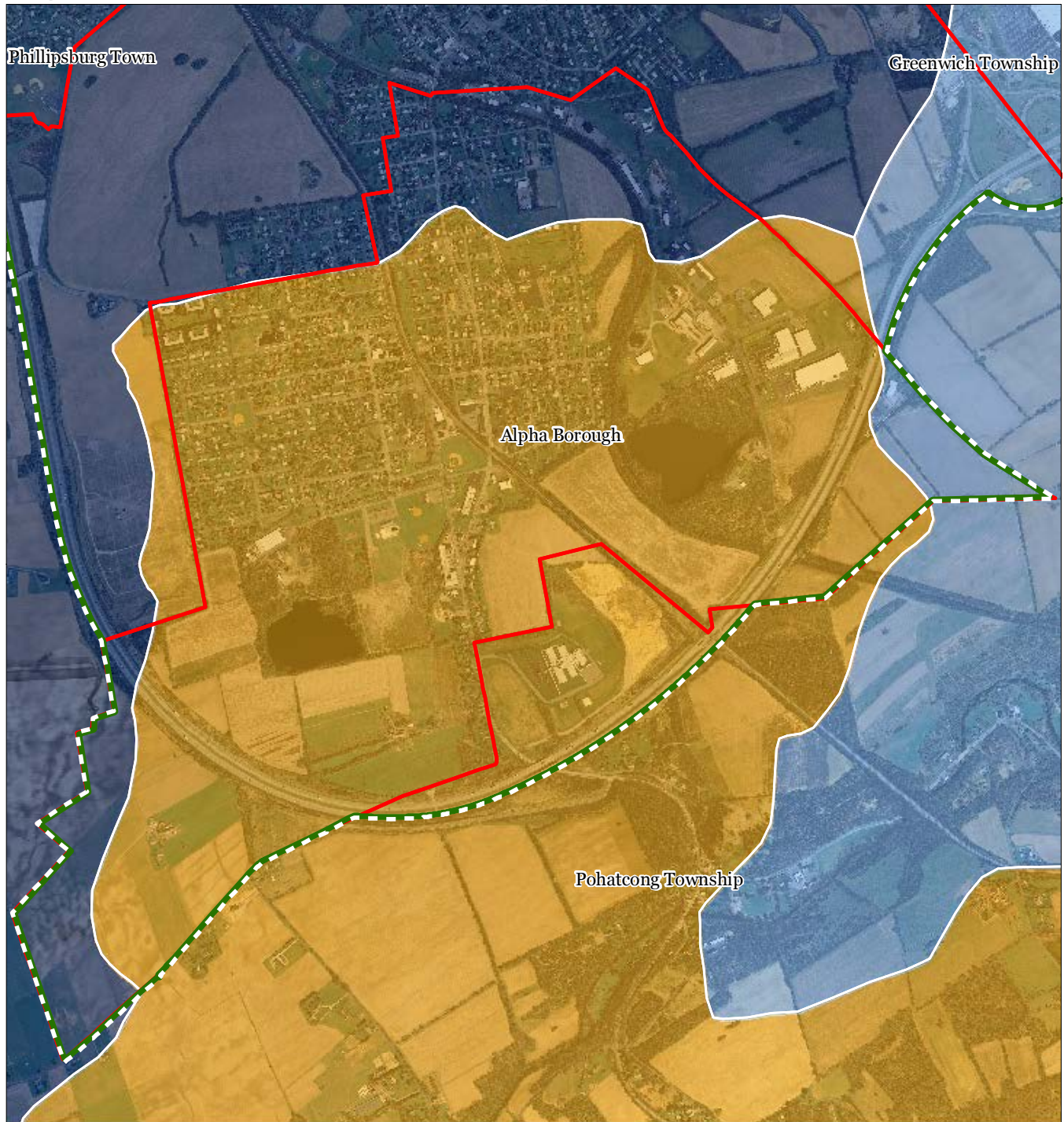
Alpha Borough



1 inch = 0.266 miles

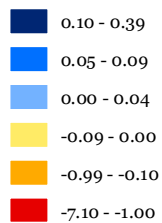


Figure 20: Net Water Availability



Net Water Availability By HUC14

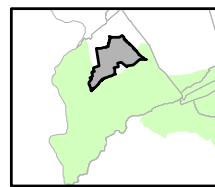
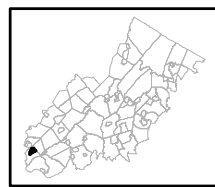
Million Gallons Per Day (MGD)



Preservation Area



Municipal Boundaries



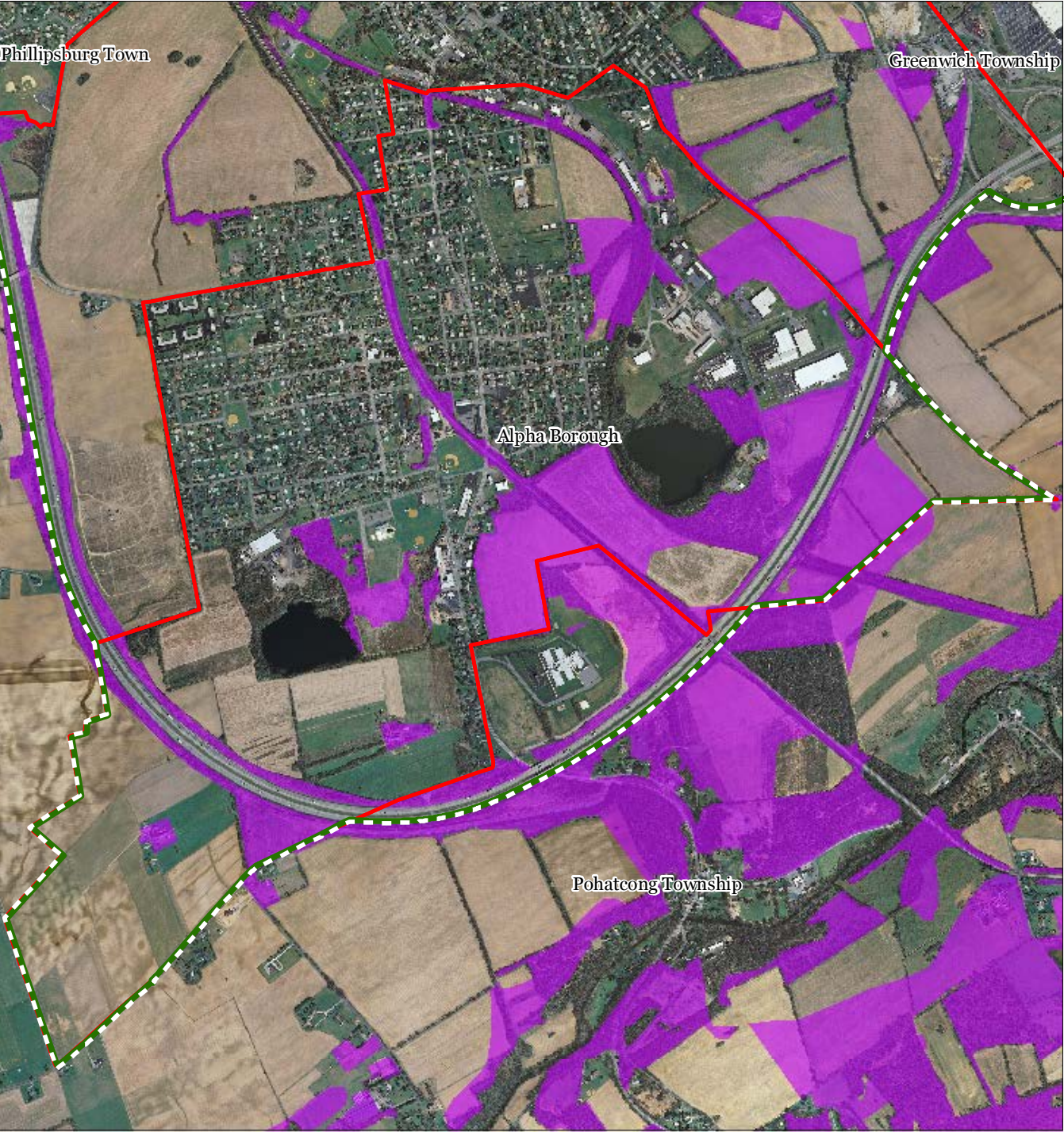
1 inch = 0.266 miles




Highlands Council
New Jersey



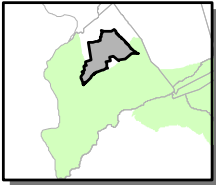
Alpha Borough

Figure 21: Prime Ground Water Recharge Areas



-  Prime Groundwater Recharge Areas
-  Preservation Area
-  Municipal Boundaries

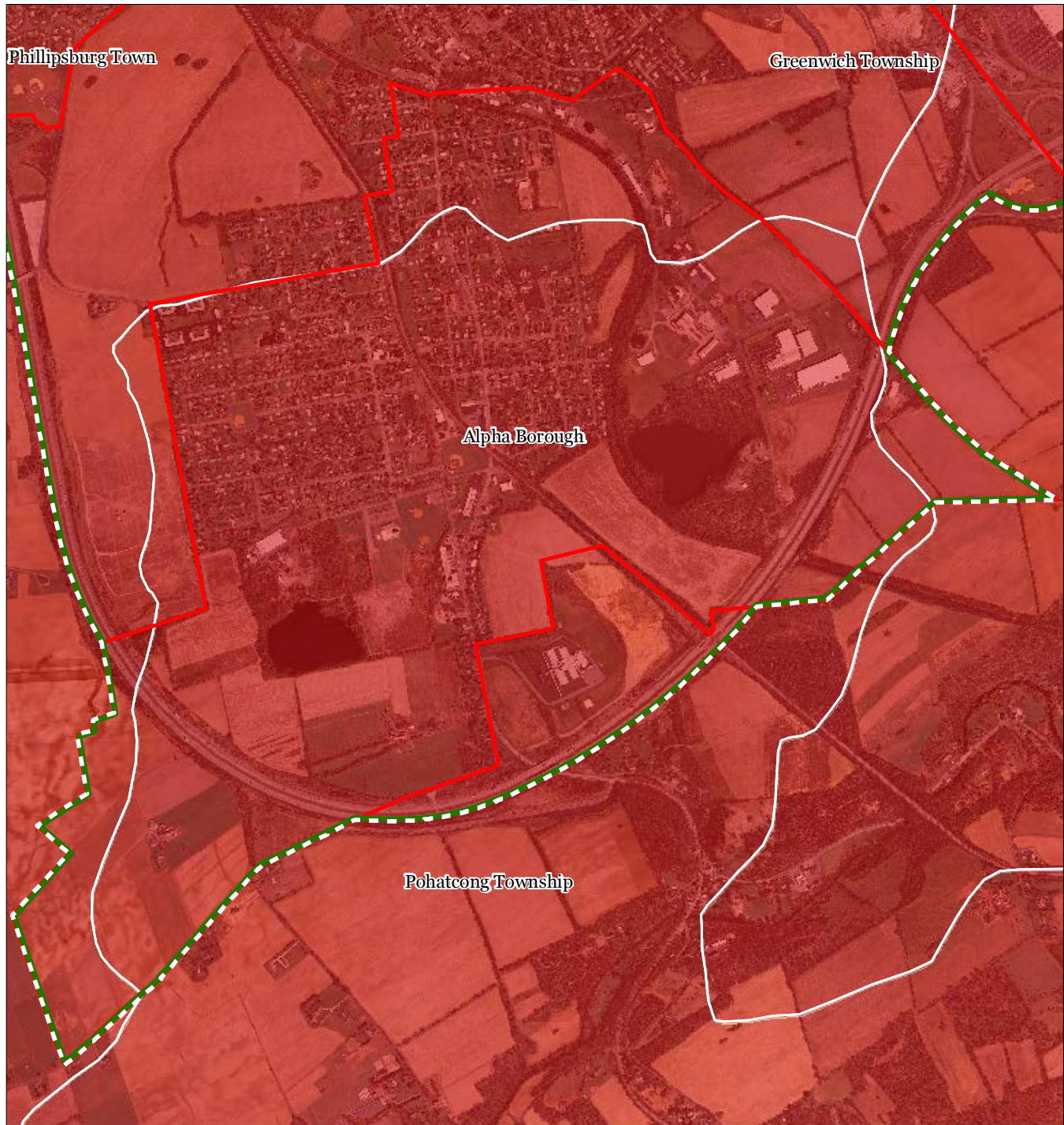
Alpha Borough



1 inch = 0.266 miles



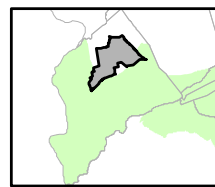
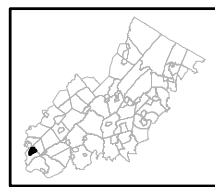
Figure 22: HUC 14s on NJDEP Impaired Waters List



Impaired Waters Overall Assessment by HUC14 Subwatershed

- Non Impacted*
- Insufficient Data Available*
- Moderate*
- Water Quality Impaired*
- Preservation Area*
- Municipal Boundaries*

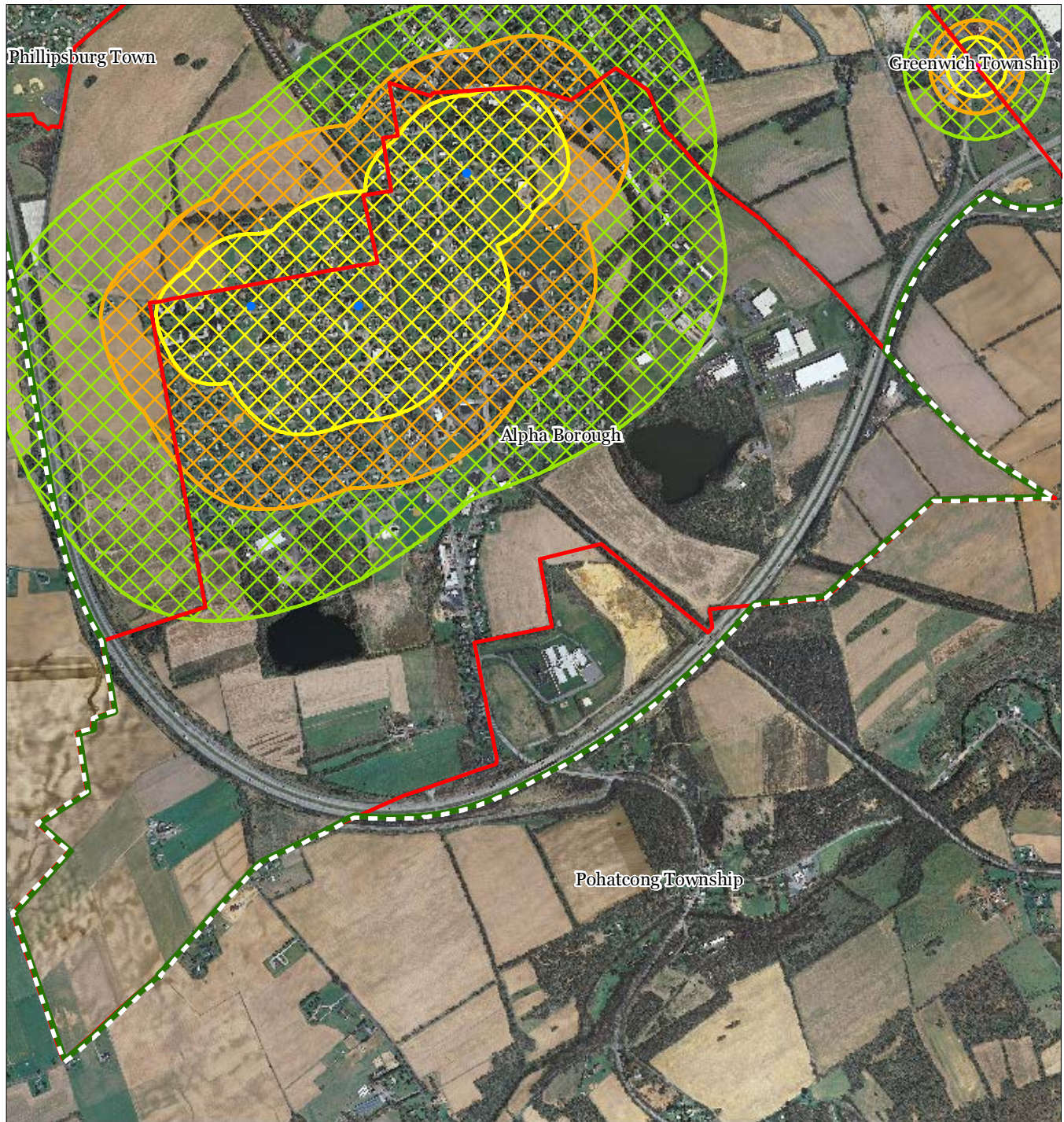
Alpha Borough



1 inch = 0.266 miles



Figure 23: Wellhead Protection Areas



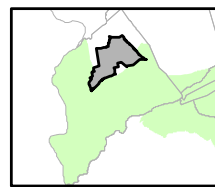
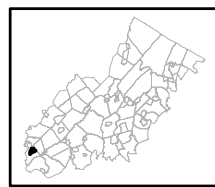
- Public Community Wells
- Public Non-Community Wells

Wellhead Protection Areas

- 2-Year Tier
- 5-Year Tier
- 12-Year Tier

- Preservation Area
- Municipal Boundaries

Alpha Borough

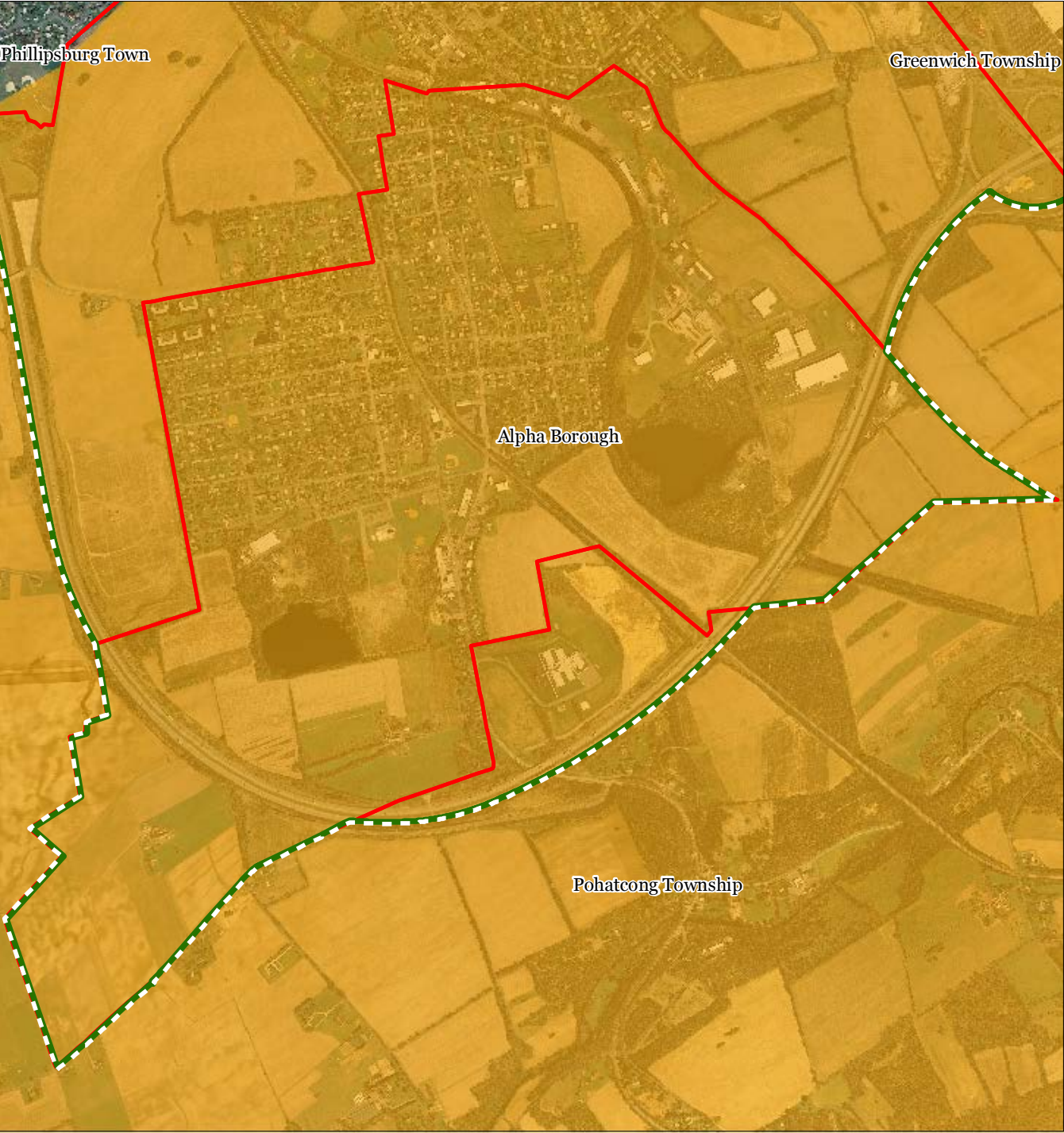





1 inch = 0.266 miles

Highlands Council
New Jersey

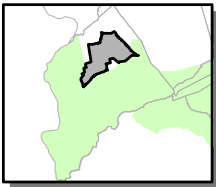
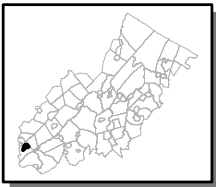


Figure 24: Agricultural Resource Area



-  Agricultural Resource Area
-  Preservation Area
-  Municipal Boundaries

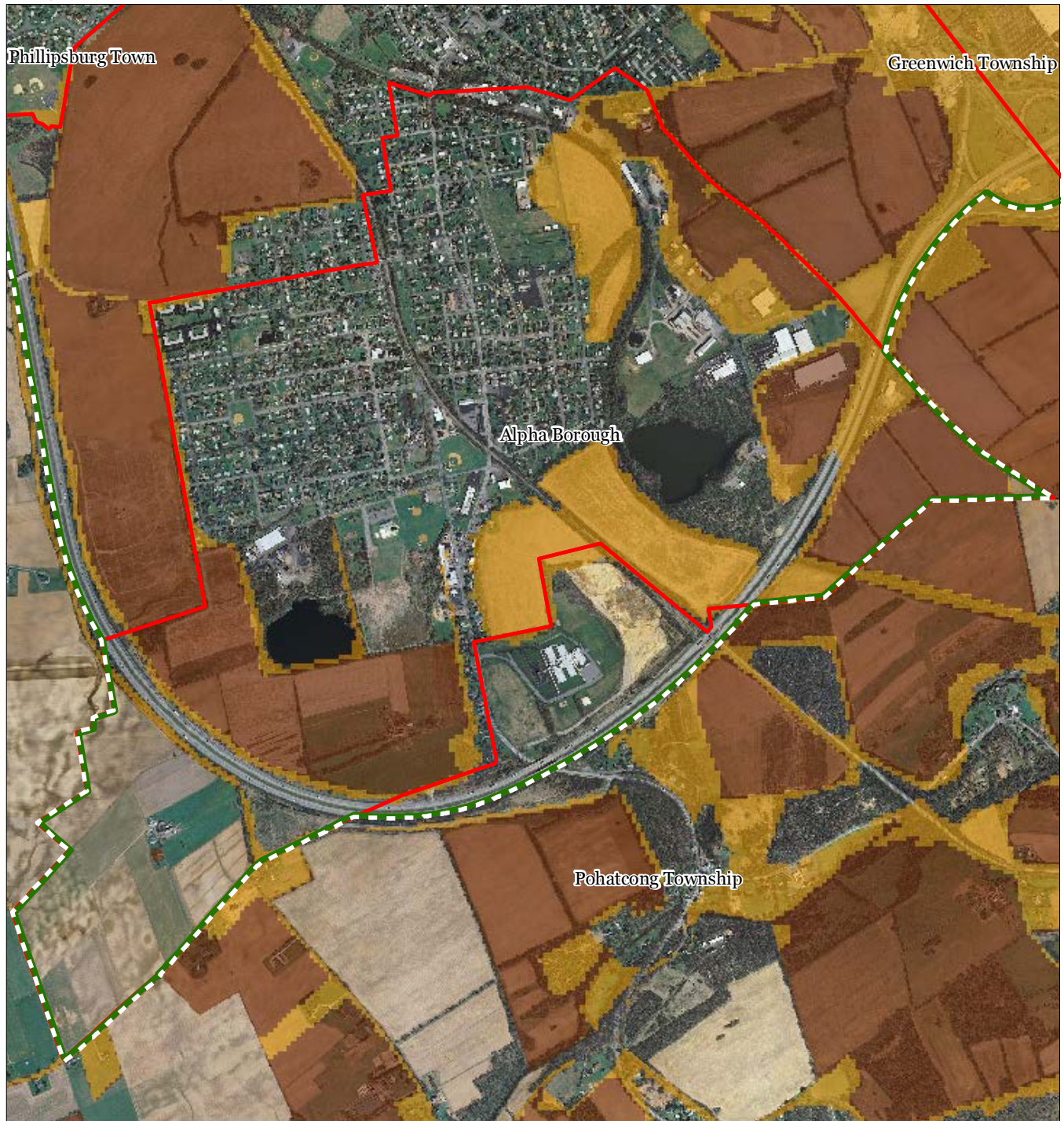
Alpha Borough



1 inch = 0.266 miles



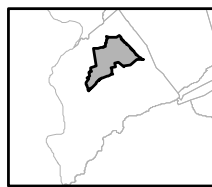
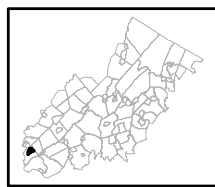
Figure 25: Agricultural Priority Area



Agricultural Priority Area

-  Moderate
-  High
-  Preservation Area
-  Municipal Boundaries

Alpha Borough

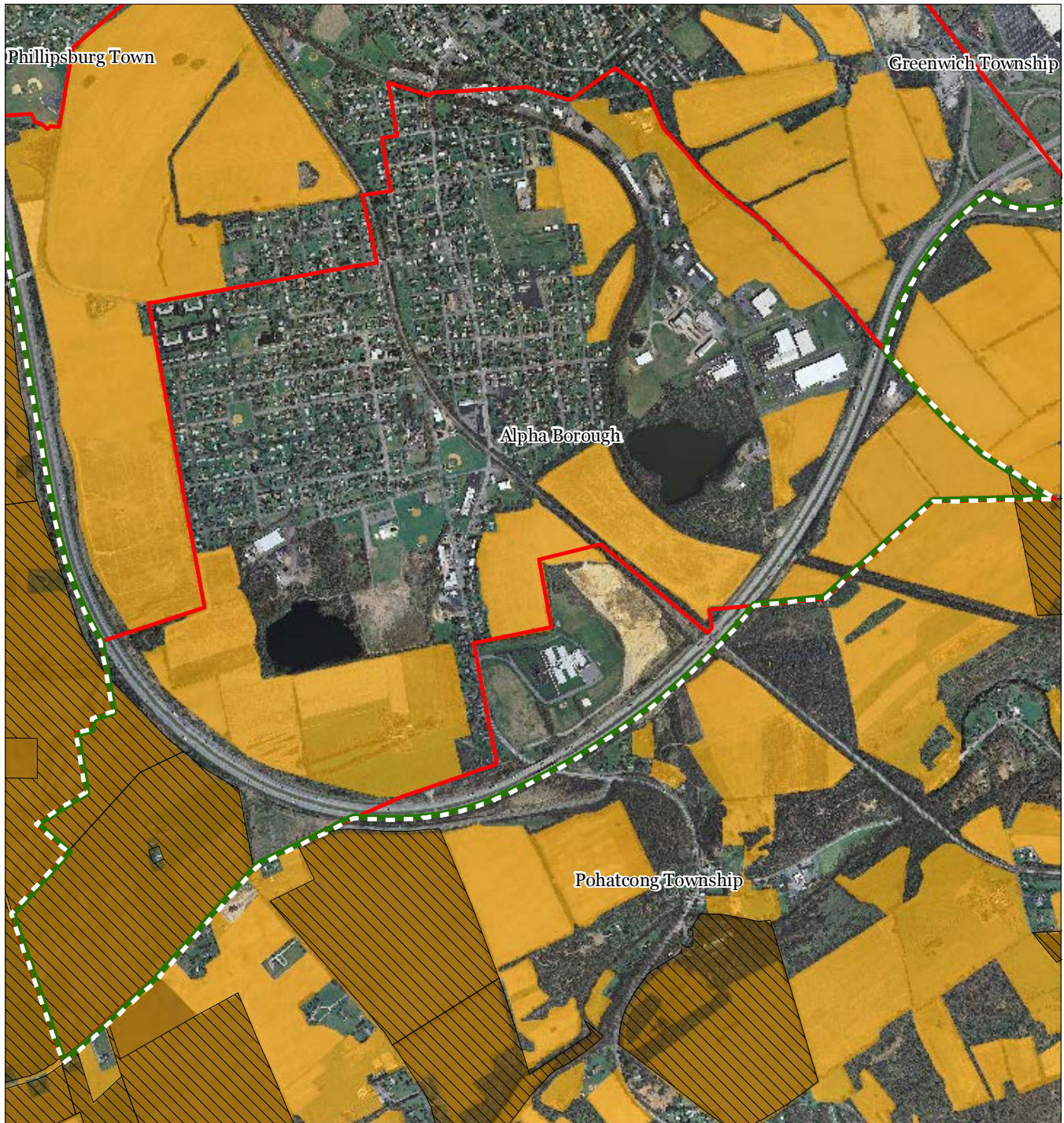


1 inch = 0.266 miles

Highlands Council
New Jersey



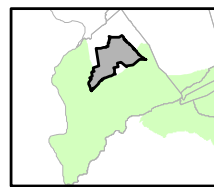
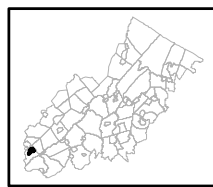
Figure 26: Preserved Farms, SADC Easements, All Agricultural Uses



SADC Easements

-  *SADC Final*
-  *SADC Preserved*
-  Preserved Farmland
-  Agriculture Uses
-  Preservation Area
-  Municipal Boundaries

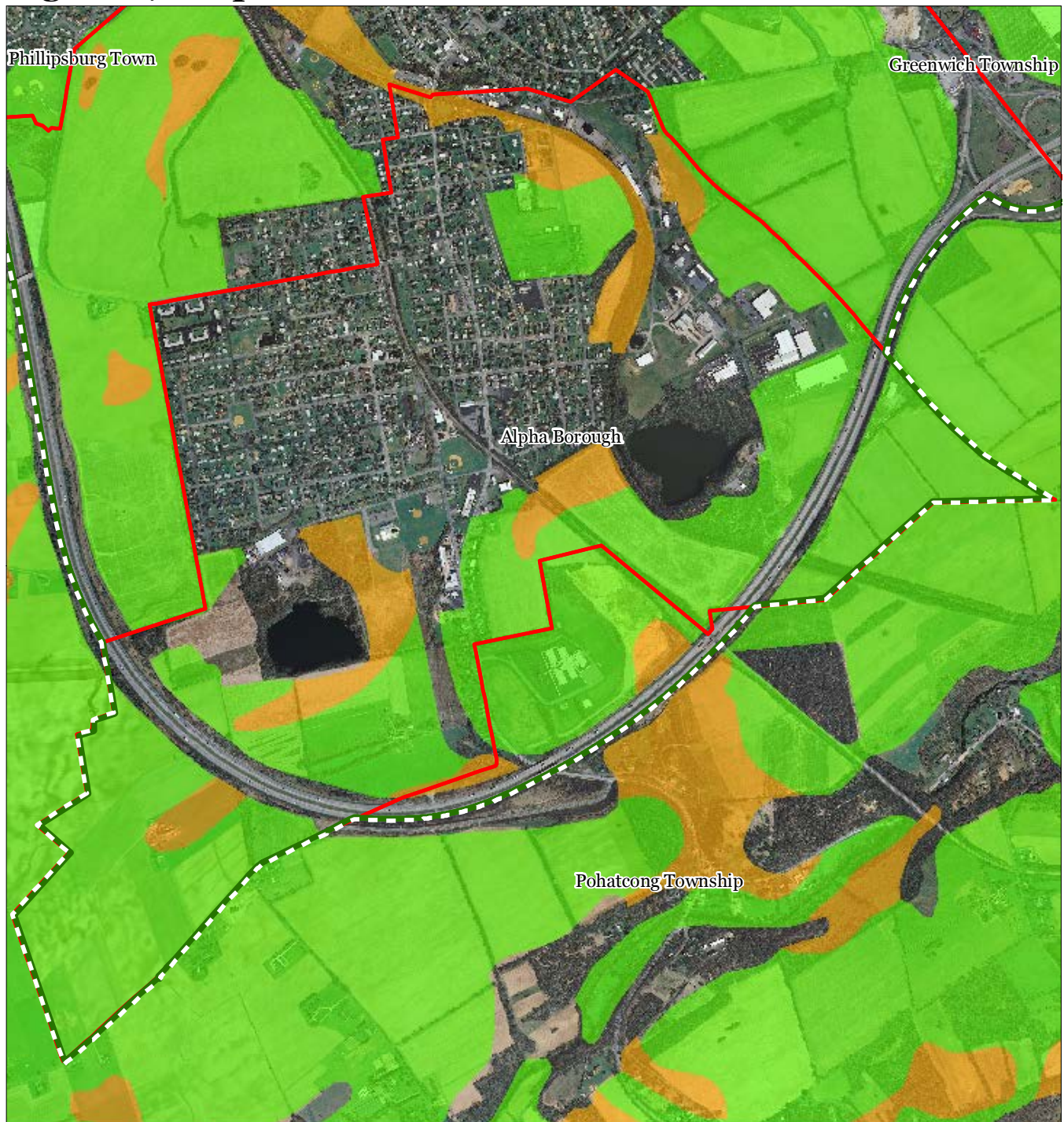
Alpha Borough



1 inch = 0.266 miles



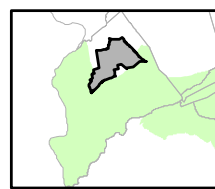
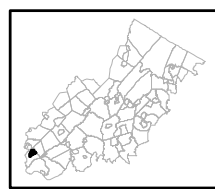
Figure 27: Important Farmland Soils



Important Farmland Soils

- Prime Farmland
- Farmland of Local Importance
- Farmland of Statewide Importance
- Farmland of Unique Importance
- Preservation Area
- Municipal Boundaries

Alpha Borough

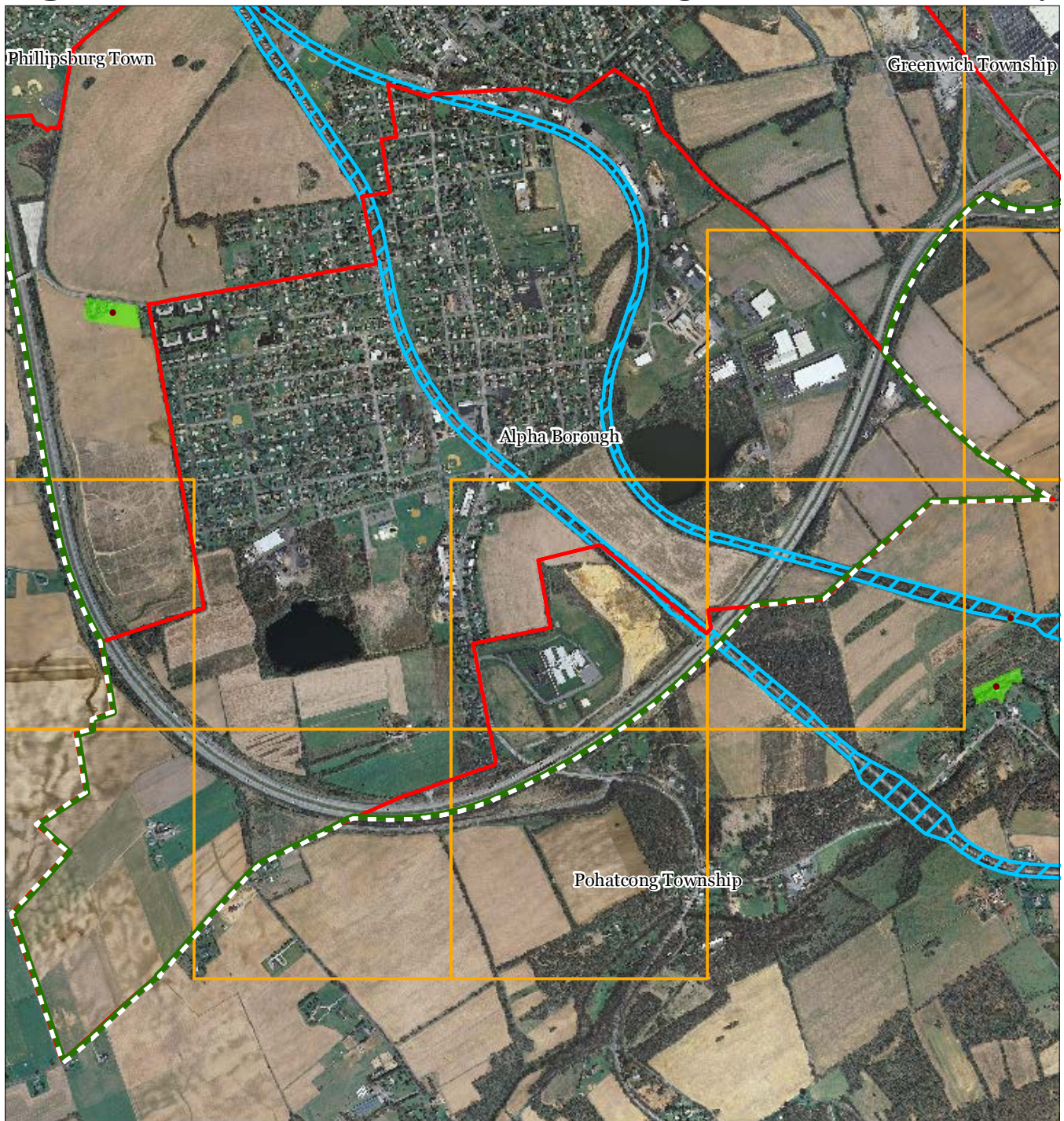


1 inch = 0.266 miles

Highlands Council
New Jersey

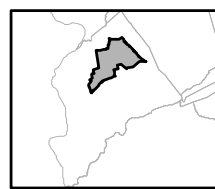
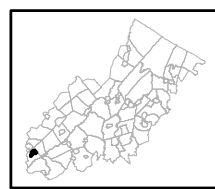


Figure 28: Historic, Cultural, and Archaeological Resources Inventory



-  Preservation Area
-  Municipal Boundaries
-  Archaeological Grids (1 sqmi)
-  NJ Historic Districts
-  Historic Property Points
-  Historic Property Polygons

Alpha Borough

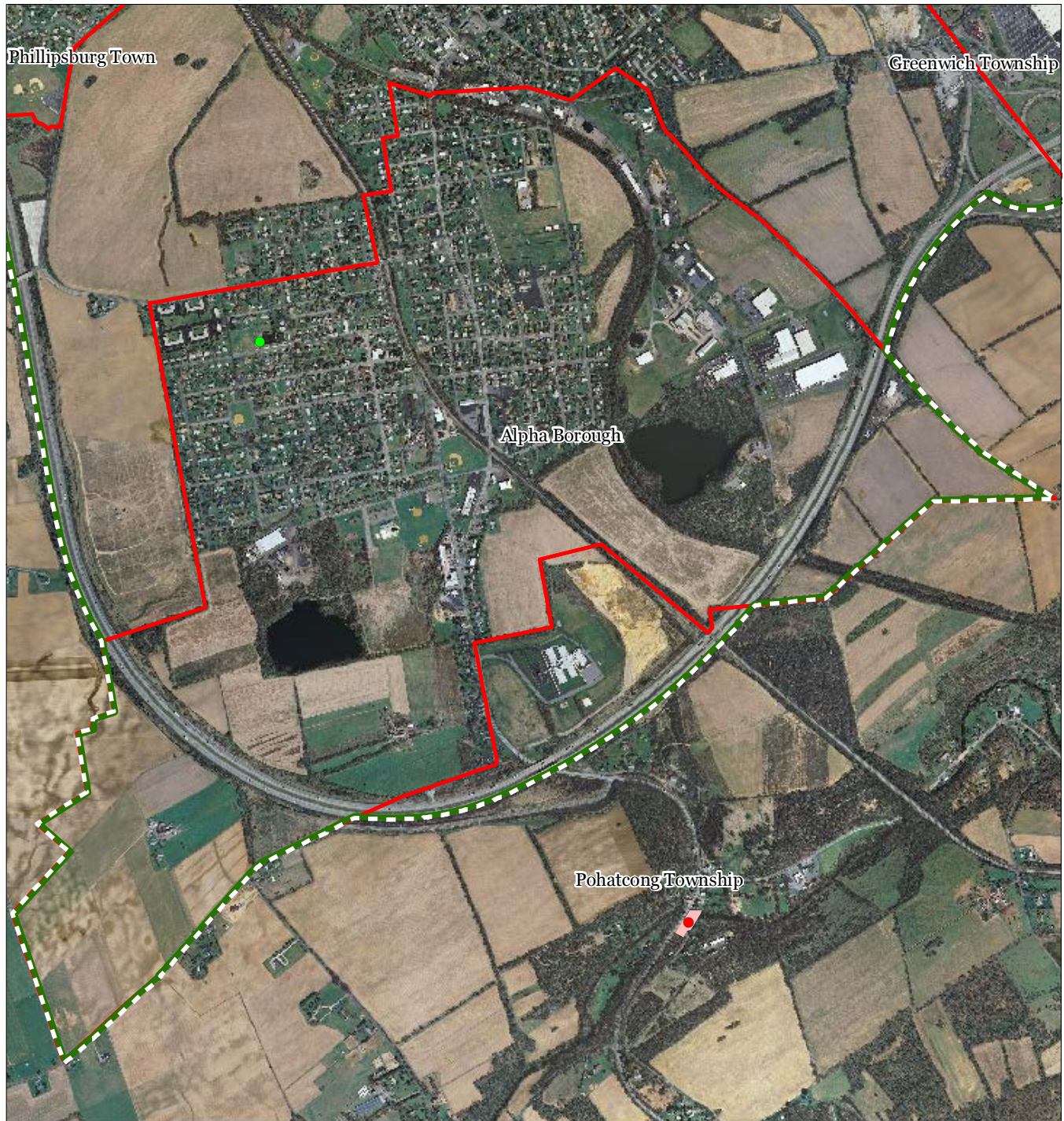


1 inch = 0.266 miles

Highlands Council
New Jersey



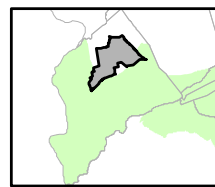
Figure 30: Highlands Contaminated Site Inventory



Highlands Contaminated Site Inventory

Alpha Borough

- Tier 1 Sites
- Tier 1 Sites (Polygons)
- Tier 2 Sites
- ▤ Preservation Area
- ▭ Municipal Boundaries

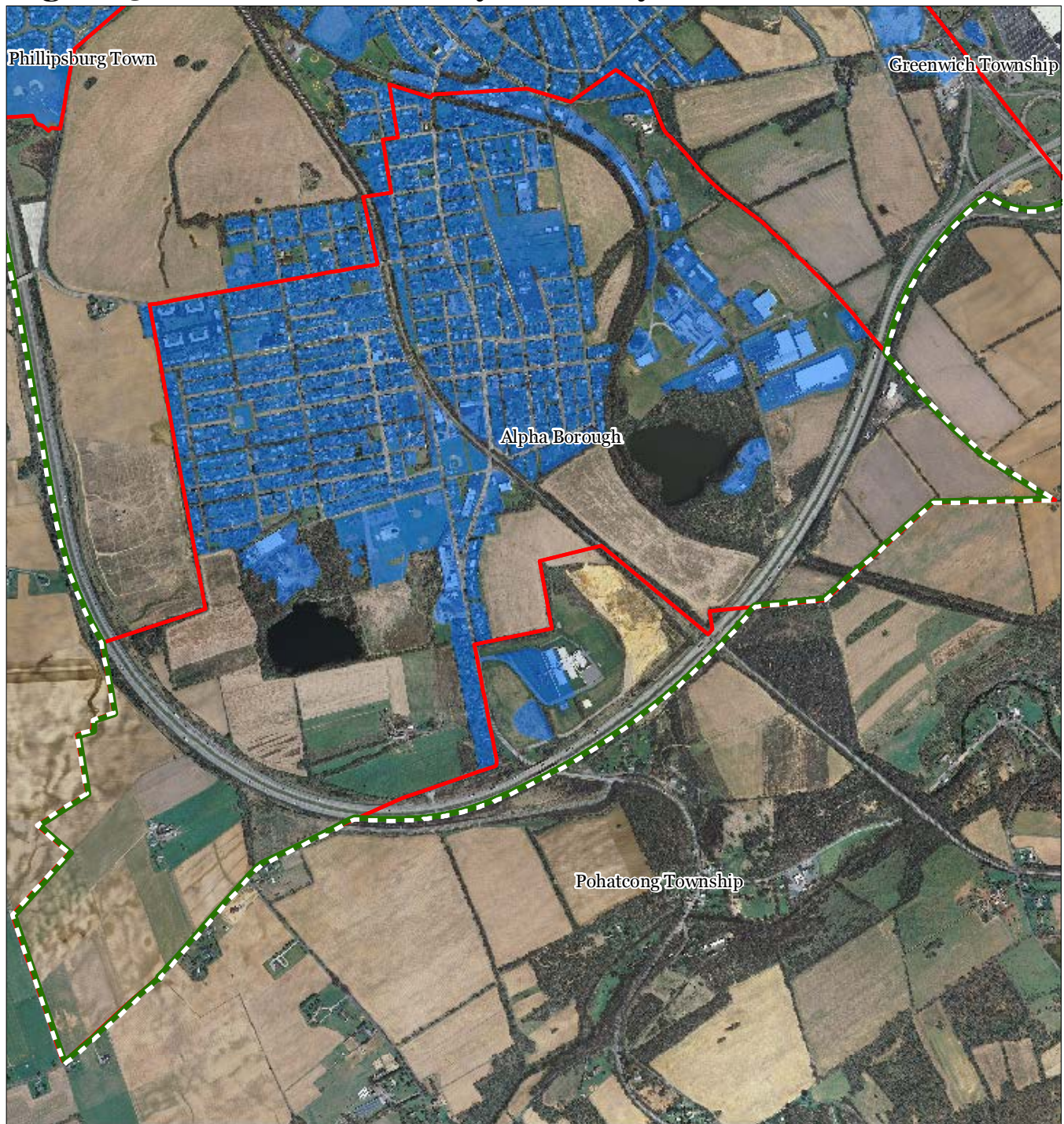





1 inch = 0.266 miles

**Highlands
Council**
New Jersey

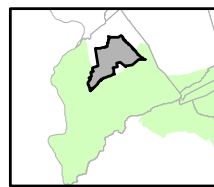


Figure 31: Public Community Water Systems



-  Public Community Water Systems
-  Preservation Area
-  Municipal Boundaries

Alpha Borough

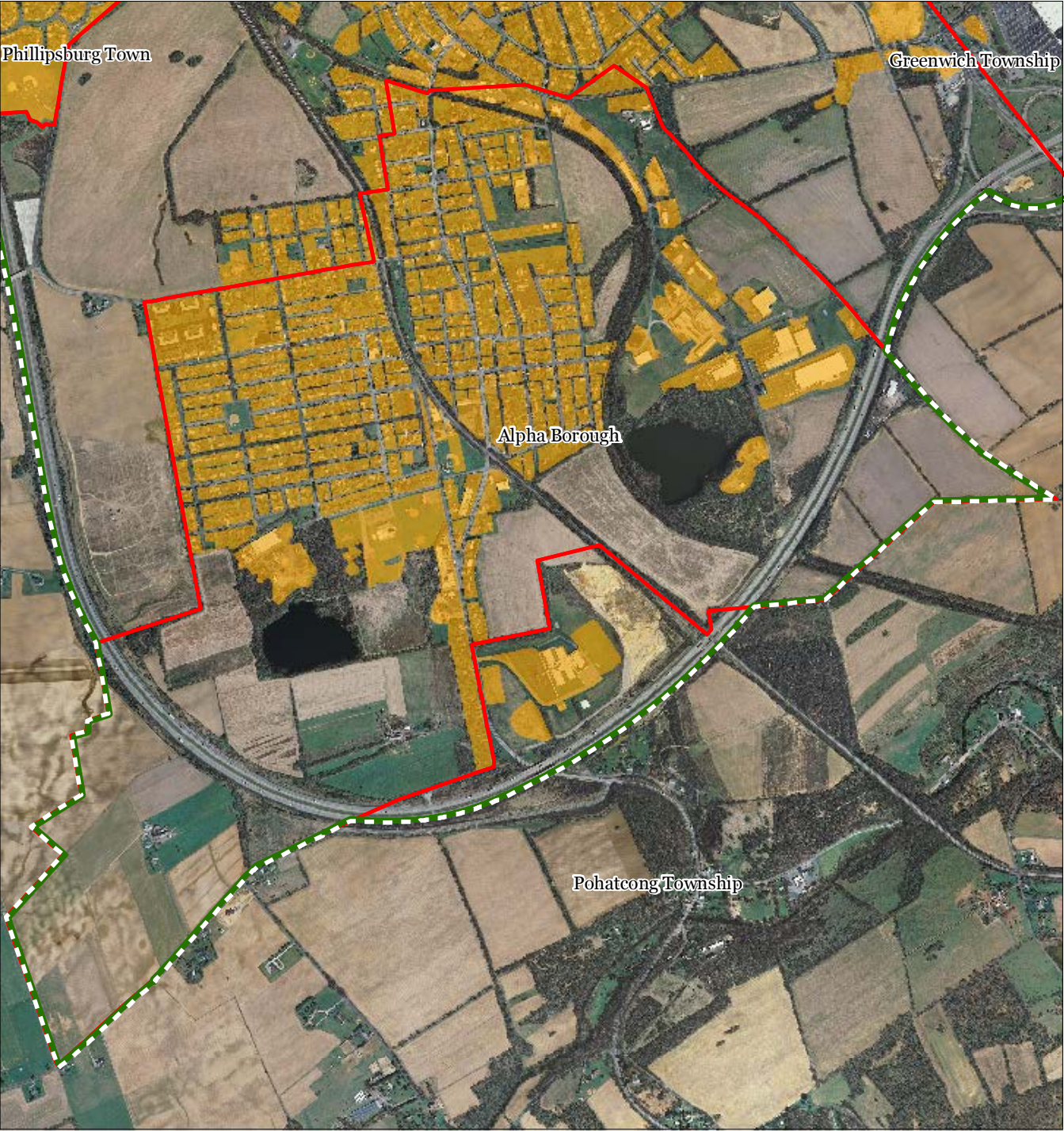


1 inch = 0.266 miles




**Highlands
Council**
New Jersey



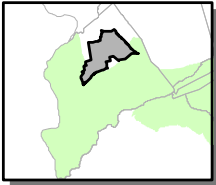
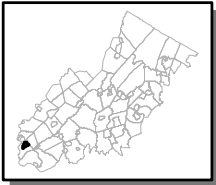
Figure 32: Highlands Domestic Sewerage Facilities



Highlands Domestic Sewerage Facilities

-  Existing Area Served
-  Preservation Area
-  Municipal Boundaries

Alpha Borough




1 inch = 0.266 miles



Figure 33: Highlands Roadway Network




Roadway Network

 *Interstate Highways*

 *U.S. Routes*

 *State Routes*

 *County Routes*

 *Local Routes*

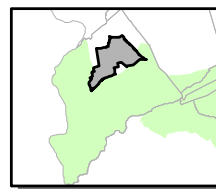
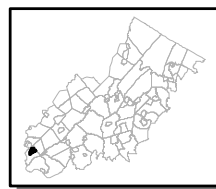


Preservation Area



Municipal Boundaries

Alpha Borough

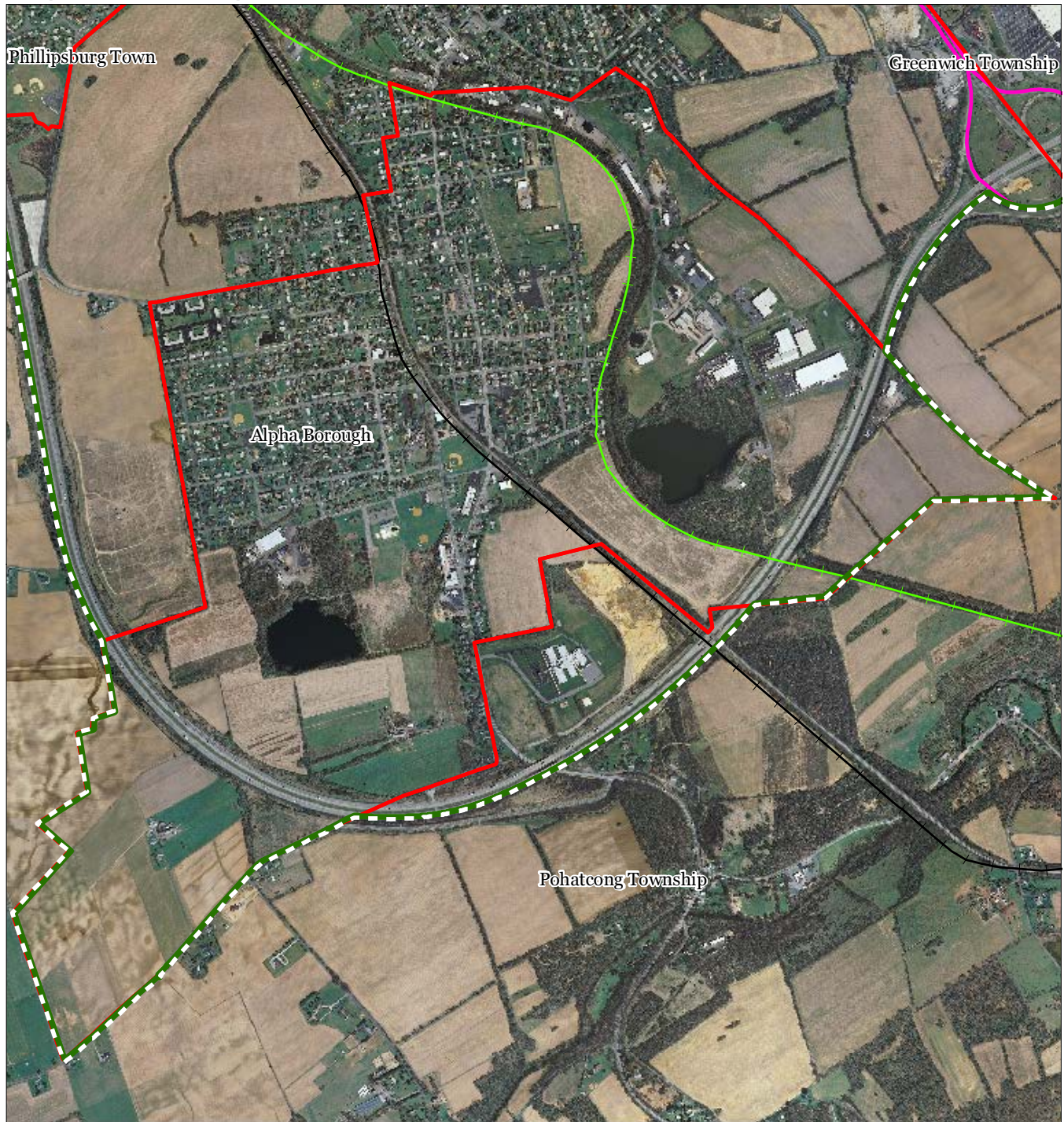


1 inch = 0.266 miles

Highlands Council
New Jersey

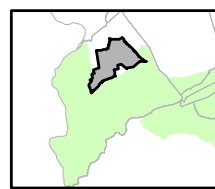
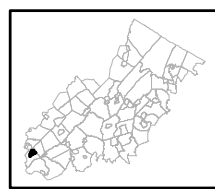


Figure 34: Highlands Transit Network



- Rail Network**
- Boonton Line
 - Main Line & Bergen County Line
 - Morris and Essex Line
 - Raritan Valley Line
- Freight Rail Lines**
- Freight Rail Lines
 - Abandoned Freight Rail
- Rail Stations
 - Park and Ride Sites
 - Private Bus Lines
 - NJ Transit Bus Lines
 - Airports

Alpha Borough



1 inch = 0.266 miles

Highlands Council
New Jersey

