

MONTHLY COMMUNICATOR

February 2014

www.nj.gov/humanservices/ddhh/home/index.html

Vol. 35 No. 2

Chris Christie, Governor

Kim Guadagno, Lt. Governor

Jennifer Velez, Commissioner

David Alexander, Director

NJAD Holds 23rd Biennial Conference

*Submitted by Carrie Pogue
and Michelle Cline*

The New Jersey Association of the Deaf would like to thank the Division of the Deaf and Hard of Hearing so much for being the major sponsor of communication accessibility for our 23rd biennial conference in Toms River in November. We had more than 144 participants and had a great conference along with our evening gala, which served as a major fundraiser for NJAD.

Our day was filled with lots of fun and activities. It started off with a forum to plan out NJAD priorities for the next two years. The focus will be on 1) interpreting and the dilemmas that are presented, 2) post high school graduation and lack of services for recent graduates, 3) visual communication in transportation and 4) leadership training for youth and organizations.

Workshops included "Introduction to Deafhood", by Laurene Simms, "Self-Advocacy: How to Obtain Effective Communication" by Catie Purrazzella, "Using Social Media to Help Your Organization Grow," by Neil McDevitt and PJ Mattiacci, and "Issues Within Deaf Senior Housing" by Lila Taylor and Erich Schwenker. Our keynote was given by Chris Wagner from the National Association of the Deaf and his topic was on NAD: Collaboration and Accountability.

Awards were given to the following people: *Certificate of Appreciation*: Joseph Pawlowicz, Jr., Frank Donato, Michael Houston, Gay Jones, Daniel Svir, and Martin Wilt. *Certificate of Special Recognition*: Neil McDevitt, Julie Warshaw, and Senator Diane B. Allen. *NJAD President Award* was given to Khanh Lao. *Unsung Hero Award* was given to Laura Schultz. *Humanitarian Award* was given to Mayra Castro. *The Albert Barnabei Memorial Award* was given to Michelle Cline.



NJAD 23rd Biennial Conference Committee members, left to right: Michelle Busanic, Jacqueline Recine, Carrie Pogue, William Cline, Michelle Cline, Kathleen Basilotto, Dan Crisham, Marjorie Kounouklos, Eli Pogue, Paolina Ramirez, Cynthia Piana, Mayra Castro, and Laura Schultz.



DDHH Service Coordinator Catie Purrazzella presents a workshop at the conference. Interpreter to the left is Dena Hazen.

General meeting and elections were also held. New officers are: Michelle Cline, President; Paolina Ramirez, Vice-President; Eli Pogue, Jr. Treasurer; Elias Papazis, Secretary. Member at Large 2011-2015 is Kathleen Hajdamacha and Darlene Sarnouski. Member at Large 2013-2017 is Thomas Sparks and Carl Anderson.

We had an evening gala with Live Art Auction, Gift Basket auction, and a comedy show. Everyone enjoyed good food, lots of laugh, and enjoyed winning different prizes. Our next conference will be held in North Jersey for 2015. Be on the lookout for more information in the coming year.

i n s i d e

- 2** Director's Corner
- 3** Letter to the Editor
- 4** What is Single-Sided Deafness?
- 3** NJ Hearing Aid Project



Director's Corner

By David Alexander, Ph.D., Director, Division of the Deaf and Hard of Hearing (DDHH)

Last month my column announced "The NJ Hearing Aid Project" to provide hearing aid assistance to low income eligible seniors. This innovative program is the result of a partnership among the NJ Department of Human Services, Division of the Deaf and Hard of Hearing, Sertoma Inc./Hearing Charities of America and Montclair State University. The above announcement generated much interest and inquiries. As a result, DDHH developed a "Frequently Asked Questions" (FAQ's) fact sheet. The FAQ's are listed within this issue. Application forms are available by contacting the DDHH office. A reminder to please donate any used hearing aids to the project so that they may be reconditioned and used by another individual with hearing loss.

DDHH is working with the Northeastern University Regional Interpreter Education Center and the New Jersey Association of the Deaf to sponsor a Deaf Self Advocacy, train the trainer's workshop on March 14 and 15. The purpose of this workshop is to train individuals who are deaf and hard of hearing to conduct peer to peer training workshops in self-advocacy for communication access. The training is limited to 20 individuals. There are still a few slots left. If you are interested in becoming a trainer to provide workshops on self-advocacy, please contact either Jason Weiland at Jason.Weiland@dhs.state.nj.us or Michelle Cline at cmcmichellecline@gmail.com.

A handwritten signature in blue ink that reads "David C. Alexander".

David C. Alexander, Ph.D., Director
New Jersey Division of the Deaf & Hard of Hearing

We Welcome Your Articles and Ads

The Monthly Communicator is published 11 times per year. Deadline for submissions for the March issue is February 1 and should be e-mailed to: monthlycommunicator@dhs.state.nj.us.

The deadline for the Monthly Communicator is the first of the month for the next month.

Kindly follow these guidelines for submissions:

- Should be less than two pages
- Plain font, such as NY Times #11 or similar
- Type flush left, no tabs
- No art imbedded within
- Send as Word attachment or an e-mail itself
- Art, logos, photos may be sent as attached JPG
- Submissions are not normally repeated
- Content should be of interest to readers, events should be accessible to people with hearing loss, no direct selling products, but educational info about new technology is acceptable
- Editor has discretion regarding editing, without final approval of submitter

Monthly Communicator

State of New Jersey
Department of Human Services
Division of the Deaf and Hard of Hearing

Director: David C. Alexander

Editor: Ira Hock

PO Box 074

Trenton, NJ 08625-0074

Phone: (609) 588-2648 / (800) 792-8339

Videophone: (609) 503-4862

Fax: (609) 588-2528

www.state.nj.us/human_services/ddhh

The Monthly Communicator is published by the New Jersey Department of Human Services' Division of the Deaf and Hard of Hearing (DDHH), a state agency. DDHH provides information, referral, and advocacy to service recipients. Information or articles provided by others does not imply endorsement by DDHH or the State of New Jersey. There currently are 8,800 copies of the MC distributed monthly.



Letter to the Editor

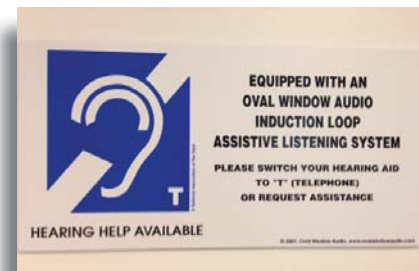
I'm writing to thank the JCC (Jewish Community Center MetroWest) for installing a hearing loop in the spinning room. Since this loop has been installed, it's been an amazing experience to hear the instructor in a darkened room with loud music.

The Hearing Loop is a special type of sound system for use by people with hearing aids or cochlear implants. It provides a magnetic, wireless signal that is picked up by the hearing aid when it is set to "T" (telecoil).

I use two cochlear implants and am totally deaf without these behind-the-ear speech processors. When I am in a spinning class, all I need to do is change the programs of my speech processors to "T" and I can hear 100 percent of what's being said.

If someone wears two hearing aids that have the "T" switch on them (most behind-the-ear hearing aids have them, not all of the in-the-ear hearing aids do), the hearing aids will work as receivers. If someone has hearing loss but does not wear hearing aids (or has hearing aids without a t-coil), there is a portable loop receiver that the spinning instructor can give out with headphones. All one has to do is ask for this accommodation.

Sandy Spekman, sspekman@gmail.com
South Orange, NJ



Dear NJ Relay



Dear NJ CapTel

I am the grandmother to six grandchildren, and I had a stroke several years ago. As a result, my family members often struggle to understand my speech over the phone even though I can understand them just fine. Does NJ Relay provide services for people who have speech disabilities like mine? I'd like to be as independent as possible without always having to ask someone else to help make calls. It would make life so much easier for me.

A Loving Grandmother

Dear Loving Grandmother,

It can be frustrating to rely on others instead of independently making phone calls, especially when trying to hold personal conversations. The great news is that NJ Relay and CapTel offers Speech-to-Speech (STS) services at no charge to consumers.

A special phone is not required to use STS. A speech-disabled person can call 7-1-1 on any phone and ask for STS, or call (866) 658-7712 to directly connect to a trained STS operator. The operator will then place the call, and repeating your words for clarity to the other person. The other party, however, will speak directly to you. It is helpful if you can provide the operator with background information prior to the actual call; you can also instruct the operator to repeat everything you speak, or only parts of your speech that may not be understood. You have full control of the call.

Persons with speech disabilities may also receive STS calls from anyone. The calling party only needs to dial 7-1-1 and ask for STS, providing your telephone number. The STS operator will then place the call.

STS also offers features, such as:

- **My Email Set-up:** Email special instructions and other important information prior to your call; this makes it easier to set up your call.
- **My Saved Messages:** Upon request, the STS relay operator can copy any message onto your saved profile; this is convenient for dictating a message

to an answering machine.

- **My Phone Book:** Store up to 30 speed-dial numbers in your phone book.
- **My Name & Place:** Callers can contact you directly by name instead of having to provide STS relay operators with your number(s).
- **My Style:** Store your preferred conversation style in your customer profile, such as whether you prefer to have your words re-voiced or repeated upon request.
- **My Wireless:** Dial *787 (*STS) from any Sprint wireless phone to connect with a Sprint STS relay operator.

Learn more about STS and download a brochure by visiting www.newjerseySTS.com, a Web site dedicated to STS services. NJ Relay also provides a dedicated customer support team 24 hours a day; call (877) 787-1989.

NJ Relay

How does NJ Speech-to-Speech Service work?



- 1 The STS user dials 7-1-1 (or 1-866-658-7712) for a trained NJ STS operator to connect to the requested party.
- 2 The STS operator will facilitate the conversation between the STS user and the other party by repeating or re-voicing the STS user's messages when necessary.
- 3 The other party speaks directly to the STS user.

CapTel Updates Software

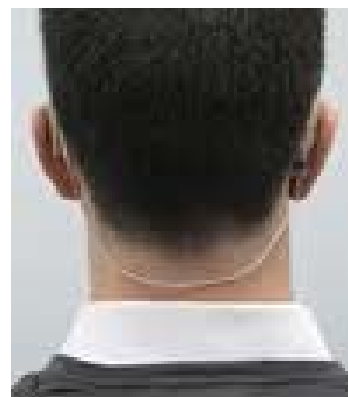
When the Communication's Assistant makes a correction to the captions, the corrected word will appear in <brackets> slightly after the word error occurs, instead replacing the word error in-line. This is the same way corrections used to be handled. The <corrected word> will always appear in the same color as the captions color, even if the user changes the corrections color in their CapTel menu. This change went into effect on Thursday, December 26. This change will impact all current CapTel 800, 800i, 840, and 840i users. CapTel 200 users are not impacted. If you have additional questions, you may contact; Ultratec, Inc.

Attn: CapTel Customer Service
450 Science Drive
Madison, WI 53711
CapTel@CapTel.com 1-888-269-7477



What is Single-Sided Deafness?

By Traci Burton, *DDHH Field Representative*



(L) Bone-anchored hearing aid (BAHA) and (R) contralateral routing of signal hearing aids (CROS).

We read and talk mostly about unilateral and bilateral hearing loss, where both ears have even a slight ability to hear. Single-sided deafness, where there is no hearing in one ear, is becoming a more common concern expressed by our constituency. Single-sided deafness has always been around, though, and the www.healthyhearing.com news emission from June 26, 2013 talks about the causes, symptoms and some treatments available for this type of hearing loss.

Single-sided deafness is the complete loss of hearing in only one ear, which is more often than not, a permanent ailment. Although single-sided deafness cannot be cured, there are many options available that will help to restore the sensation of hearing in both ears. Some people are born with the hearing loss, while others may experience it as a result of a health condition or their environment. Most commonly, people who are affected by single-sided deafness are between the ages of 35 and 54.

Causes

Single-sided deafness is caused by a number of conditions, all of which will lead to different reactions in the ear.

- Physical damage to the ear.
- Pressure on the nerve.
- Inner ear issues: A viral or bacterial infection can create sudden hearing loss in one ear.
- Tumors in the brain or ear: The presence of an acoustic neuroma or benign tumor may lead to damage to the auditory nerve, causing an individual to experience a complete loss of hearing.
- Severe Meniere's disease: Meniere's disease is a disorder of the inner ear that typically creates issues that cause a feeling of pressure, ringing in the ear (or tinnitus), or a sense of unsteadiness. Since this will generally affect just one ear, it could lead to single-sided deafness.
- Head injury or trauma: Trauma to the head can cause a fracture in one

of the ear's bones and damage to the auditory pathway.

- Circulatory system disorders

Symptoms

The general conditions of single-sided deafness differ from person to person, but it will cause an overall sense of unsteadiness. People will typically have difficulty comprehending which direction sound comes from, and may even experience a sense of not hearing from one direction at all, which is known as the head shadow effect. Individuals with single-sided hearing loss will also have trouble with deciphering background noise from a targeted sound.

Treatment Options

A contralateral routing of signal hearing aids (CROS) or bone-anchored hearing aids (BAHA) can transfer sounds that come through one ear into the other to create a balanced auditory sensation.

CROS

These types of hearing aids can be used as a wired or wireless device. The instrument consists of a receiver and another unit that has a small microphone, which is placed in the deaf ear. The receiver goes in the other ear so that when the sound goes through the microphone system, it is amplified in the normal ear. This makes it possible for users to hear noises from both sides of their heads.

BAHA

Bone-anchored hearing aids are

a newer alternative that involves a titanium implant in the bone behind the deaf ear. This device is used to process sounds that would normally go through the deaf ear, and it sends them through the skull bone. Then, the user can hear sounds from one side to the other, allowing for balanced hearing. This system is worn by approximately 15,000 people worldwide and has been used as a very successful treatment in Europe since the late 1970s.

Traci Burton, Field Representative can be reached at 609-588-2648 or traci.burton@dhs.state.nj.us.

Bergen Deaf Senior Schedule

Submitted by Tricia Arslanian

The Bergen Country Deaf Seniors meet at the Northwest Bergen Senior Activity Center 46-50 Center Street, Midland Park, NJ 07432 every Thursday. Seniors 60 and over are welcome. Phone: 201-445-5690. Fax: 201-493-8900 email: arslaniant@optonline.net. In winter, the deaf group cancels activities when the driving is dangerous, because of ice and snow.

Bergen County Deaf Seniors Calendar of February Events.

February 6: Bingo at 1:00 p.m.

February 13: Valentine's Day Party & LCR Games 12:30 p.m.

February 20: Dingo at 1:00 p.m., followed by birthday party about 3:00 p.m.

February 27: Social Worker Sheila Brogan assisted by ASL interpreter Lauren Margolin will provide information and referral assistance to individuals. Please call for appointment.



HLA-NJ News and Views

A Monthly Column from The Hearing Loss Association of NJ

By Joel Strasser, APR, Fellow PRSA, Trustee, HLA - NJ, Public Information Officer

HLA-NJ Invites 2014 Scholarship Applications from NJ High School Seniors with Hearing Loss

Applications are now being accepted from high school seniors with hearing loss for one of four HLA-NJ scholarships to be awarded this high school year to students pursuing higher education. With funding made possible in part by the successful Garden State Walk4Hearing in October, four scholarships of \$1,000 each are being offered to successful candidates.

HLA-NJ's scholarship program is designed to encourage and support young students by publically celebrating their successes and achievements with hearing loss. Aligned with the HLA-NJ goal to bring awareness to life challenges of hearing loss, the application requires a thoughtful essay on how hearing loss has impacted the student's life, and how its challenges have been met.

Scholarship winners will be announced in May, and an award ceremony and celebration open to all will be held in June (TBA).

All students with hearing loss and the following qualifications are encouraged to apply: 1) high school senior between the ages of 17 and 20, 2) New Jersey resident, 3) acceptance into a college, university or vocational school by June 1, 2014.

The official application can be found online at www.hearingloss-nj.org, and can only be submitted online. The application deadline is May 1, 2014. No late applications (received after midnight May 1) will be accepted. The success of an application will increase if students start assembling the required application documentation as soon as possible, and begin drafting the required essay.

Questions concerning the application or application process are welcome and may be addressed to Alice J. Glock, HLA-NJ Scholarship Chair at aglock@optimum.net.



❖ Senate Hearing Champions reintroduced the Hearing Aid Tax Credit. Senators Tom Harkin (D-IA) and Dean Heller (R-NV) reintroduced the Hearing Aid Tax Credit on November 13 and they plan to work to ensure that the legislation is considered when Congress addresses tax reform. The bi-partisan bill is nearly identical to legislation introduced in the past and it is similar to H.R.1317 that was introduced in the House of Representatives in February by Representatives Tom Latham (R-IA) and Carolyn McCarthy (D-NY). Both bills would provide a tax credit of \$500 per device to people of all ages who need a hearing aid. HLA will continue its support of the bill.

Other Advocacy News From HLAA National

- ❖ Filed comments with TDI and other consumer groups in the FCC's Further Notice of Proposed Rulemaking on IP Captioned Telephone Relay Service.
- ❖ Filed comments with consumer groups with the FCC on issues related to captioning equipment under CVAA
- ❖ Sent letters of support to members of the Senate Foreign Relations Committee in support of the Convention on the Rights of Persons with Disabilities (CRPD)
- ❖ Posted on Facebook and HLAA e-News a poll for Regal Cinema regarding how people with hearing loss prefer to hear the soundtrack at movies in the theater: just the dialog or enhanced dialog with some background music, sound effects.
- ❖ Board Member Michael Stone attended an event at the FCC on November 13 with FCC Chairman Tom Wheeler who shared his perspective on the work of the commission and discussed issues facing the agency.

❖ The Access Board's Rail Vehicles Access Advisory (RVAA)

Committee's first day of meeting on November 13 included a vote to approve new members who applied for membership on the Committee. Seven organizations and companies applied, including HLAA. HLAA was voted onto the RVAA Committee as well as the NY MTA and NJ Transit, pending appointment by the chairperson of the Access Board. The Advisory Committee will review current regulations and provide the Access Board with suggestions on a range of accessibility issues, including updating the regulations to ensure that people with hearing loss have access to information provided aurally, such as announcements and audible emergency alerts, which are provided in rail cars.

❖ Here's something to celebrate: www.runwaygirlnetwork.com/2013/11/21/southwest-airlines-to-offer-closed-captioning-on-wireless-inflight-entertainment-in-early-2014/. Member John Waldo says, "We may be getting close to the tipping point where people start to understand

Continued on page 6

HLA-NJ...continued

the importance of captioning. I've said for some time that 50 years ago, nobody thought about wheelchair ramps, it just didn't happen. Now, nobody thinks about wheelchair ramps, it happens automatically. We are at the stage where people are thinking about captioning. Now we have to get to the point where nobody thinks about it anymore, but just does it."

WALK4HEARING "Gets Better and Better"

- ❖ New Jersey's Garden State Walk4Hearing was held Sunday, October 20, 2013, with 820 people attending.
- ❖ The Washington DC Walk4Hearing took place on Sunday, November 3, where about 320 people attended.
- ❖ The Florida Walk4Hearing (Jacksonville) was held Saturday, November 9. This walk concluded the 2013 Walks.
- ❖ Staff met for a strategic planning meeting for the 2014 Walks. This is the first of several meetings.
- ❖ The walks have passed the \$1.3K mark on the on the Walk4Hearing Web site. This is REMARKABLE! Thank you all for your amazing support and dedication. Walk4Hearing Director Ronnie Adler says, "Each year, the Walk4Hearing program gets better and better." In 2012, we had a total of 9,000 walkers who participated in the Walk across the country. In 2013, there were 11,000 walkers.

Chapter Development

- ❖ The HLA Convention 2014 State/Chapter workshops and 2014 Webinars Calls for Proposals went out to state organization and chapter leaders and chapter coordinators, with a December due date.
- ❖ The first chapter development webinar was held on November 23 at noon for chapter coordinators.

Membership

- ❖ An HLA Member Survey reminder went in the November 6 HLA e-News. The paper survey was mailed the week after for those HLA members who don't use email or who have opted out of receiving our email communications (about

900 people). A notice also went in the November/December **Hearing Loss Magazine**. The survey continues to show a high response rate both by email and by mail. Staff is tabulating results as they come in.

Media/Communications

- ❖ Anne Pope, former HLA president, talked on WYRS radio in Manahawkin, New Jersey, about hearing loss, the stigma, communication strategies, who's affected, and what can be done about it. She was excellent. (There is no transcript unfortunately.)
- ❖ An email blast went out in November asking people to tell us about their workplace experiences as people with hearing loss. We received close to 150 responses, both positive and negative, about workplace experiences. These anecdotes are being used as resource materials for the January/February 2014 **Hearing Loss Magazine**, which features employment and workplace issues. The experiential stories also will be used to develop materials to support people in the workplace. More details will follow in 2014 as we formulate a strategic plan for this program.
- ❖ Former HLA Board President Julie Olson from Wisconsin did a radio interview on hearing loss prevention on WFLN-AM in La Crosse, Wisconsin. Click on this link <https://rongray.sharefile.com/d/s94f6e90465d4d66a>
- ❖ Obviously, this was not captioned because it is radio, but Julie does an excellent job of promoting HLA and our chapters, materials and Web site as well as hearing technology and preventing hearing loss. This interview was a result of the public service announcements (PSAs) that hi HealthInnovations put out across the country in partnership with HLA. The PSA will also be played in all NYC taxicabs.

Social Media

- ❖ Look at the Walk's Facebook page. Remember to "Like" the Walk and HLA on the HLA FB page.
- ❖ People can easily access social media sites via the icons on the top right-hand corner of www.hearingloss.org.

Webinars

- ❖ The HLA Webinar schedule is set and is on the Web site along with instructions how to participate. Sam Trychin, Ph.D., was the guest speaker on November 20. Anna Gilmore Hall's webinar is available for replay in the HLA Portal if you missed it.

HLA Convention 2014, Austin, Tx, June 26-29

- ❖ Early-bird registration closed on January 31, 2014.
- ❖ State organization and chapter leaders and chapter coordinators received a special, "delegate" registration form that entitles them to get an **Education Package** registration for \$125 (until January 31, 2014 when the rate rises to \$150.)

Governance

- ❖ HLA Board of Trustee members welcomed Katherine Bouton (NY) and David Jones (VA) to the National Board.

Development

- ❖ New! HLA Donate Button on GuideStar - Visitors to GuideStar can now make donations on HLA's page: www.guidestar.org/organizations/52-1177011/hearing-loss-association-america.aspx
- ❖ HLA Named a Top-Rated Nonprofit by *GreatNonprofit.org* - We are now listed as a GreatNonprofit, which will raise our visibility and outreach to potential donors.
- ❖ Reminded federal workers about the Combined Federal Campaign. Designate #11376
- ❖ Take Advantage of IRA Qualified Charitable Distribution - Program Ends December 31, 2013. If you are 70½ or older you may qualify to donate any portion up to \$100,000 from your IRA accounts directly to HLA without having to include any of the IRA transfer as part of your taxable income. To learn more click here.

For additional information about HLA-NJ, contact Joel Strasser at jjas888@aol.com, or Joel.Strasser@hearingloss-nj.org.



Lake Drive Walkathon 2013

Submitted By
Deborah New, Social Work Intern

On Tuesday, October 15 the Lake Drive School held its 7th Annual Walkathon to highlight its character education initiatives. This year's theme of "Responsibility" is being delivered via a "Send the Message" platform.

The Lake Drive Program, housed in Mountain Lakes, has a history of excellence at the forefront of innovative programming in deaf and hard of hearing education. The mission of the Lake Drive Program is to create a community of self-empowered learners in an atmosphere of respect and trust that will allow each individual student to reach his/her optimal learning potential.

Character education initiatives and activities such as the Walk-a-thon contribute to the mission.

The event began with an outdoor pep rally featuring the Lake Drive cheer to the beat of drums played by one of the classes. All participants, sported popular rainbow-loom bracelets in Lake Drive's school colors of blue and white. Each classroom at the Lake Drive School created a unique poster to depict their understanding of the character value of responsibility. Members of each class presented their class poster to the assembled crowd.

Attendees of the Walk-a-thon included the youngest Lake Drive students from our Sound Start early intervention classroom (in quad-strollers), pre-schoolers from our Ivy Nursery and Pre-school programs, Lake Drive school students, parents, teachers and staff.

Following the pep rally and poster presentation, the students were ushered out to the Boulevard under a canopy of pom-pom shaking teachers and staff.

The weather was beautiful. The whole Lake Drive community proudly walked as far along the Boulevard and back, often waving at passersby.

The theme of Responsibility is being promoted throughout the school with posters and little

messages that say Responsibility is... using ideas suggested by the students, such as "taking care of my pets." The Walk-a-thon is a spirit building activity that helps build pride in the Lake Drive School community.

Social Security Info

As of February 2014, the Social Security Administration will no longer offer Social Security number (SSN) printouts and benefit verification information in field offices. However, to ensure a smooth transition, they will continue providing these services if requested until April 2014.

These changes will meet the increasing demands for services at the same time that the agency budget has been significantly cut by over \$1B in each of the last three years. During this same time period they have invested in technology that offers more convenient, cost-effective, and secure options for our customers to obtain certain services without visiting a local office.

Because the SSN printout is not an official document with security features, and is easily duplicated, misused, shared illegally, or counterfeited, eliminating it helps prevent fraud.

Employers, departments of motor vehicles, and other entities requiring SSN verification can obtain this information in real time or overnight using online government services such as E-Verify and Social Security's Business Services Online.

Beneficiaries and recipients needing a benefit verification letter can obtain one immediately by registering for a my Social Security account at www.socialsecurity.gov/myaccount or through the mail within 5-7 days by calling the national toll-free number, 1-800-772-1213.



Getting Their Kicks GNJ Deaf Soccer Coach Delfim Fragueiro, far right, with his team in Jessup, Maryland on November 8 and 9 after a second place finish. There were eight teams which traveled from NJ, NY, Chicago, Washington D.C. and several local teams within Maryland. The Gallaudet Bison won first place.

New Jersey Hearing Aid Project



Frequently Asked Questions

What is the New Jersey Hearing Aid Project?

The New Jersey Hearing Aid Project provides reconditioned hearing aids to low income seniors aged 65 or over. The Project is a collaboration among the New Jersey Department of Human Services, Division of the Deaf and Hard of Hearing, Sertoma Inc./Hearing Charities of America and the Montclair State University.

How do I know if I'm eligible?

You must meet the following criteria:

- 65 years of age or older
- Resident of New Jersey
- Physician or licensed audiologist must determine necessity of a hearing aid
- Income less than \$26,130 if single or less than \$32,037 if married
- Not eligible for others sources of hearing aid assistance (e.g. Medicaid)
- does not possess a hearing aid

How do I apply?

Obtain an application from the New Jersey Division of the Deaf and Hard of Hearing (contact information is at the bottom of this page). If you are currently a registered recipient of Pharmaceutical Assistance for the Aged and Disabled (PAAD), please request Eligibility Application Form A. If you are not registered with PAAD, please request Eligibility Application Form B. Return the completed application form to the address noted on the application form.

How long a wait will be there once application is submitted?

This Project is dependent upon the availability of used hearing aids that have been donated to the project. If an appropriate hearing aid is in the hearing aid inventory, it may take two – six weeks for the hearing aid to be reconditioned and fitted. In some cases, an appropriate hearing aid may not be readily available in the inventory. You will be notified when one becomes available.

How often may I receive a reconditioned aid?

Individuals may reapply to the program once every three years. One (1) hearing aid per applicant will be provided.

What is the warranty?

Reconditioned hearing aids are dispensed with a one year warranty. Any repairs required to the aid during the warranty period will be at no cost to you. A flat fee of \$85 will be charged for repairs outside of the warranty period. You are responsible for this payment at the time repairs are needed. Repaired hearing aids come with a one year warranty.

Are there out of pocket expenses?

This Project will provide you at no cost one reconditioned hearing aid, fitting of the hearing aid and three visits to the audiologist as follows: first visit - hearing test/ear impression; second visit- fitting of the hearing aid; and one follow up visit. Please inform

the audiologist if you have Medicare or other health insurance. Your insurance will be billed for any costs associated with the testing of your hearing. There may also be out of pocket expenses for which you will be responsible such as for batteries, ear mold, dome, and future visits if needed. There will also be a \$85 flat fee for any repairs when out of warranty

If you have any additional questions, please contact the NJ Division of the Deaf and Hard of Hearing at:

**NJ Department of Human
Services
Division of the
Deaf and Hard of Hearing
PO Box 074
Trenton, NJ 08625-0074**

**or by telephone at
800-792-8339 or
609-588-2648.**

NJHAP Update

The annual income eligibility requirements for the New Jersey Hearing Aid Project as reported on page one of the January 2014 Monthly Communicator has been raised to \$26,130 if single or less than \$32,037 if married.

If you would like to donate used hearing aids, The Project will graciously accept all hearing aids regardless of function, style, or age of instrument. A tax deduction letter will be mailed to the donor if a name and address are included with donated items. Please send all donated items to one of the addresses listed below:

**New Jersey Hearing Aid Project
Hearing Charities of America
1912 East Meyer Blvd.
Kansas City, MO 64132**

or

**New Jersey Hearing Aid Project
Montclair State University
1515 Broad St., Bldg B
Bloomfield, NJ 07003**



Deaf Self-Advocacy Training Train the Trainer Session

Presenter: Tim Riker, Master Deaf Self-Advocacy (DSAT) Trainer, will present in ASL.



Target Audience:

The target audience includes individuals who are Deaf or hard of hearing, use ASL to communicate and:

- Have a strong interest in Deaf self-advocacy
- Who can commit to providing at least one Deaf consumer training within a year

Cost: FREE

Application Deadline - February 14th

March 14th and 15th - Trenton, NJ
8:00 am- 5:00 pm

Location:

Marie Katzenbach School for the Deaf
(MKSD)
Jochem Center
320 Sullivan Way
Trenton, NJ 08628

To Apply

This training is free and limited to 20 participants who are Deaf or hard of hearing and use ASL to communicate. To apply you must complete an application form, and submit that along with your resume and letter of recommendation. Priority will be give to NJ residents. For more information or to request an application, contact:

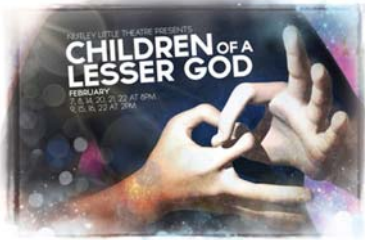
Jason Weiland, NJDDHH, jason.Weiland@dhs.state.nj.us

Michelle Cline, NJAD, njadgreen@gmail.com

Co-sponsored by NJ Division of the Deaf and Hard of Hearing, NJ Association of the Deaf, Marie Katzenbach School for the Deaf, and Northeastern University Regional Interpreter Education Center.

Funded in part by the U.S. Department of Education RSA CFDA #84.106A and B, Training of Interpreters for Individuals Who Are Deaf and Who Are Deaf-Blind.

Nutley Little Theatre to Present 'Children of a Lesser God'



Nutley Little Theatre will present "Children of a Lesser God," a drama by Mark Medoff opening Friday, February 7, and running for three weekends at the NLT Barn, 47 Erie Place, Nutley.

Evening performances at Nutley Little Theatre will be on February 7, 8, 14, 20, 21 and 22. Matinee performances are on February 9, 15, 16 and 22. Evening performances have an 8 p.m. curtain and matinees are at 2 p.m. Ticket prices are \$15. There is a \$2 discount (matinees only) for students and senior citizens who show IDs at the box office. All performances will be interpreted speech to sign and sign to speech. Nutley Little Theatre engages *SmartTix.com* to handle ticket sales by phone and through the Internet. Patrons can order by phone by calling 1-877-238-5596. To order online, patrons can go to the NLT web site at www.nutleylittletheatre.com and click on the "Click for Tix" icon, or can go directly to www.SmartTix.com.

In "Children of a Lesser God," a naive speech therapist joins the faculty of a school for the deaf to teach lip-reading. He meets Sarah, deaf from birth and estranged from the world. Love and the chasms of expectations between the deaf world and the hearing world hold us riveted. Winner of a Tony Award for best play, "Children of a Lesser God" looks at the recesses of being human, of relating to those around us.

The cast includes Estafania Arias, Michelle Benenati of Kearny, Brian Butterfield of Bloomfield, Jennie Cherry of Verona, Victor Gallo, of North Caldwell, Andrew Galuskin of Carlstadt and Jacqueline Schreiber of Parsippany. "Children of a Lesser God" will be directed by Dickson Lane of West Orange. Shayne Montoya of Jersey City, Molly Moran of Linden and James Morales of Maywood will interpret each performance in American Sign Language. Assistant stage manager is Melissa Bowman of Maywood. The cast will also stage the production at the Bergen County Community College in the summer.

Nutley Little Theatre stages its productions at the NLT Barn, 47 Erie Place, Nutley, located off Brookfield Avenue (one block east of Franklin Avenue) in the heart of the Erie Place Historic District. For directions, please see www.nutleylittletheatre.com.

Sign Language Classes

Marie Katzenbach School for the Deaf
Spring Session 2014

Sponsored By

Katzenbach Parent And Staff Education Foundation, Inc.

Location: Marie Katzenbach School For The Deaf

320 Sullivan Way

West Trenton, New Jersey, 08628

Tuesday Evenings: 7:00 to 8:30 p.m.

March 4 - May 13, 2014 (No Class April 15)

\$70 registration must be received before February 14

Late registration (after Feb. 14) or walk-in fee is \$90

Note: No refunds after the first class

Classes offered: Classes are based on enrollment of 8 or more. People enrolling may change classes at the beginning to fit their needs.

Beginner Series

Book requirement: *How To Speak With Your Hands* By Elaine Costello. Available at any bookstore.

Beginner one: For people with little or no knowledge of sign language; concentration on fingerspelling and vocabulary using English word order with some ASL features.

Beginner two: For those who have completed beginner one or have had another sign language class; course continues vocabulary development using English word order with some ASL features.

Children's Series

Children's sign language: For children ages 7 to 12. Children 13 and older may join a class listed above. This course covers the manual alphabet, basic signs, and greetings with practice games and exercises. Please purchase book required for beginner series.

Conversation Series

Conversation one or two: for people who have taken at least two sign language courses and want to practice expressive and receptive skills. Some vocabulary and grammatical lessons will be included, but the emphasis is on becoming more fluent. Conversation two is more non-voiced.

Questions? Contact Heather Osowski, program coordinator; heather.osowski@mkdsd.org or call (609) 530-3131 or 530-3130. For quick responses, contact via email.

Agency Provides Independent Evaluation Services for Deaf/Hard of Hearing Individuals

Submitted By Kimberly Mooney, Ph.D, LPC, LDT-C

Aces (assessments, counseling, and educational services) is a state approved agency that provides independent child study team evaluations. We assist parents, school districts, law firms, and advocates with initial evaluations, second opinion evaluations, re-evaluations, and specialized evaluations for deaf or hard hearing individuals.

Our reports assist with the determination and need for special education or 504 plan services at pre-school, elementary, middle, high school and college levels.

Our experienced team members are certified by the state to conduct testing to determine academic skills, cognitive ability and social, emotional, behavioral functional levels. This is completed by administering standardized tests by highly qualified professionals. Other services offered are private counseling, tutoring, and home instruction.

If you would like more information about ACES, please visit acsteamservices.net, call (201) 317-9457, or email at aces.teamservices@yahoo.com.

The Communicator Signboard



BACK BY POPULAR DEMAND New Jersey Association of the Deaf Cupcake Wars Fundraising

Saturday, March 1

Right after "Leadership" Workshop - 3:00 p.m.

Leadership Workshop - 12:30 p.m. to 2:30 p.m.

Jochem Center at NJSD/MKSD

320 Sullivan Way, West Trenton, NJ

Admission: Donation of \$1 or more is greatly appreciated.

To Enter the Cupcake Wars Contest:

- Limit up to 15 contestants (first come, first served)
- Deaf & Hard of Hearing only
- 18 & over
- \$20 entry fee
- All cupcakes are to be donated to NJAD to sell & auction for fundraising

Cupcake Wars Contest Rules:

- Make 2 dozen cupcakes + 3 single cupcakes for judges
- They will be judged on: Appearance
- Creativity
- Taste

Prizes will be awarded in CASH

Email: *Annmarie Buraczeski, Chairlady at*
aburaczeski@gmail.com

with "Cupcake Wars Contest" on subject.

All organizations in NJ are invited

**New Jersey Association of the Deaf
General Meeting**
Saturday, March 22, 2014
10 a.m. to 12:30 p.m.
Waretown United Methodist Church
27 Bryant Road, Waretown NJ 08758
Then stay for St Patrick's Fundraising
1:00 p.m. - 2:15 p.m. Lunch
2:30 p.m. - 3:45 p.m. Most Green Contest, Trivia Game
4:00 p.m. - Gift Drawing & 50-50 Cash Drawing
\$25 per person includes corned beef on rye, cole slaw with one hot drink. One free ticket for gift drawing.
Pay in advance by **March 5**.
\$30 per person before March 15 and at the door.
Payable to NJAD and mail to:
**NJAD, 167 Cumberland Ave, Estell
Manor NJ 08319-1715**
*Fundraising proceed for NJAD Delegates to the NAD
Conference in Atlanta, Georgia the week of July 1-6, 2014.
Donation is tax-deductible.*
*More info, contact Carl Anderson or Laura Schultz
co-chairs - at njadspotlight@comcast.net*

Diverse Deaf Club of New Jersey, Inc

Our Lady of Peace Catholic Church
1740 Route 130 North
North Brunswick, NJ 08902

Admission: \$10 Member \$12 Non-Member

February 1

Door opens at 6:00 p.m. - Dingo Games start at 7:30 p.m.

Remember: If snowstorm or ice storm, we will notify you if we close

Dingo Games - Please check www.ddcnj.org

We will serve free desserts and sell drinks

March 1

Door open at 3:00 p.m.

General eeting starts at 3:30 p.m. - only members

We will serve at 5:30 p.m. corned beef sandwich with cole slaw and one drink for \$7. Dingo Games start at 7:30 p.m.

April 5

Door open at 6:00 p.m. - Dingo games start at 7:30 p.m.

We will serve desserts and sell drinks

May 3

Door open at 6:00 p.m. - Dingo games start at 7:30 p.m.

We will sell subs, one snack and one drink for \$6

June 7

Door open at 3:00 p.m.

General meeting & election of officers starts at 3:30 p.m.

Only members

We will serve at 5:30 p.m. grilled chicken with potato salad, beans and one drink for \$6. Dingo Games start at 7:30 p.m.

Hackensack High School, Hackensack, NJ

Signed interpreted performance of "A Funny Thing Happened
On The Way To The Forum," Friday evening, March 21, 2014.
Watch for more details in the March Monthly Communicator.



Bridge Players Theatre Company Proudly Presents

Guys & Dolls

A Musical Fable of Broadway based on a story
and characters of Damon Runyon

Music & Lyrics by Frank Loesser Book by Jo Swerling & Abe Burrows
Directed by Tim Saggess

Musical Direction by Dr. Diana Dohrmann

The classic musical, Guys & Dolls is packed with one unforgettable song after another - not to mention romance, charm and illicit gambling to spare. With beloved tunes such as "A Bushel and a Peck," "Sit Down, You're Rockin' the Boat," "Luck Be a Lady" and "The Oldest Established," there is plenty of toe-tapping in store.

January 31, February 1, 7, *8, 14 & 15, 8 p.m.

February 2, 9 & 16 - 3 p.m.

*** Performance on Saturday, February 8 will be sign interpreted.**

Broad Street Methodist Church 36 E. Broad St. Burlington, NJ 08016

Ticket price \$20 includes desserts & beverages served during intermission. Group rates available for groups of 15 or more.

Info and reservations- (856) 303-7620 or order

on-line at www.bridgeplayerstheatre.com

AUGUST WILSON'S Interpreted performance
FENCES
McCarter Theater in Princeton, NJ
Saturday, February 8 at 3 p.m.
DIRECTED BY PHYLCIA RASHAD
Visit www.mccarter.org for tickets and more information

MONTHLY COMMUNICATOR - February 2014



NJ Department of Human Services
Division of the Deaf and Hard of Hearing
PO Box 074
Trenton, NJ 08625-0074

PRESORTED
FIRST-CLASS MAIL
U.S. POSTAGE
PAID
TRENTON, NJ
PERMIT No. 21

ADDRESS SERVICE REQUESTED

Dated Material Please Rush

Calendar of Events 2014

Friday, April 25, 2014
DDHH Advisory Council Meeting
9:30 a.m. - 1:30 p.m.
Location and Presenter: TBA

DDHH Regular Office Hours: Monday – Friday; 8:30 AM - 4:30 PM
Office Closed: Monday, February 17 - President's Day