

974.905
044.4

**State of New Jersey
Department of Human Services
Division of Family Development**

**CURRENT
PROGRAM
STATISTICS**



July 2004

Jeanette Page-Hawkins, Director

TABLE OF CONTENTS

HIGHLIGHTS:

WFNJ/TANF	2
TANF PARTICIPATION RATE	2
FOOD STAMP PROGRAM.....	3
EMERGENCY ASSISTANCE.....	4
GENERAL ASSISTANCE.....	4
CHILD SUPPORT AND PATERNITY.....	5
STATISTICS- BY STATE, COUNTY, & COUNTY POPULATION-DENSITY STRATUM:..	6
Figure 1: WFNJ/TANF Families (NJ Statewide) July 2002 to 2004	6
Figure 2: WFNJ/TANF Families (by County & Population-Density Stratum)- July 2004	7
Figure 3: TANF Participation Rates (by County & Population-Density Stratum)-July 2004	8
Figure 4: TANF County Participation Rates Above & Below NJ Statewide Average	9
Figure 5: Food Stamp Program Households/Persons (NJ Statewide) July 2002 to 2004.....	10
Figure 6: Food Stamp Recipient Trends (NJ Statewide) July 2002 to 2004	11
Figure 7: Food Stamp Program Households/Persons (by County & Population-Density Stratum)- July 2004.....	12
Figure 8: TANF Emergency Assistance Program (NJ Statewide) July 2002 to 2004.....	13
Figure 9: TANF Emergency Assistance Program (by County & Population-Density Stratum)- July 2004.....	14
Figure 10: General Assistance Program (NJ Statewide) July 2002 to 2004.....	15
Figure 11: General Assistance Program (by County & Population-Density Stratum)-July 2004 ...	16
Figure 12: Child Support & Paternity Distributions (NJ Statewide) FFY 2004.....	17
Figure 13: Child Support & Paternity Cases Open by County & Population-Density Stratum- (2Q 2004)	18
Figure 14: Child Support & Paternity Cases Remaining Open (2Q 2004).....	19
Figure 15: WFNJ Statistical Summary	20
ACRONYMS	21
EXPLANATORY NOTES	21
County Population-Density Stratum:.....	22
WFNJ Statistical Summary (Figure 15).....	22

WFNJ/TANF (See pages 6-7 for additional information)

- As can be seen from **figure 1** (page 6), during the month of July 2004, the **overall TANF caseload** in the state expanded by 271 cases representing a **0.6% increase from last month**. Additionally, the 3-month **statewide caseload** demonstrated a 1.4 percent modest growth while growing 4.9% since July 2003.
- The **one-year rolling statewide caseload changes** are also shown, and the **rates of change** have **steadily increased from positive 3.8% for the July 2002 to July 2003 period as compared to the July 2003 to July 2004 period** having the 4.9% increase mentioned above. Thus, the **decline in the total number statewide cases observed in 2002 from 2001 levels has been eliminated** during the mid-2003 to 2004 timeframe.
- Of interest, **counties having the highest caseload percentage increase since July 2003** include counties of all three population density types: Warren County (27.4% ↑), Gloucester County (24.6% ↑), as well as high-density (HD) Bergen County (17.5% ↑) [figure 2 data-page 7].
- In contrast, Cape May and Hunterdon County (both LD), as well as Ocean County (MD), effectively **controlled caseload increases (-1.6%, 0%, and -9.5%, respectively)** during this **one-year period**. Among HD counties, Camden County stands out in this stratum for consistently controlling its caseload between 2003 and 2004.
- More recently, the **most active counties for 1 and 3-month periods ending July 2004** include:

1 mo ↑ Caseload %	3 mo ↑ Caseload %	1 mo ↓ Caseload %	3 mo ↓ Caseload %
(LD) Hunterdon 7.0%	(LD) Hunterdon 17.9%	(LD) Cape May (4.8%)	(LD) Cape May (14.6%)
(LD) Sussex 4.8%	(LD) Warren 10.4%	(MD) Morris (3.2%)	(LD) Cumberland (5.3%)
(MD) Burlington 3.1%	(MD) Gloucester 6.4%	(MD) Ocean (2.7%)	(MD) Ocean (6.8%)

TANF PARTICIPATION RATE (See pages 8-9 for additional information)

- From **figure 3** (page 8), we see that the TANF participation rate (PR) for **July 2004** was 32.2% for the State as a whole. This represents a 7.3 percent change (negative) from levels in July 2003 (32.20% PR currently versus 34.75% PR).
- Higher and lower performing counties over the year ending July 2004** are displayed below. For example, Hunterdon County (low population-density stratum) residents were the least likely to participate (17.4% PR) in the program, although this level significantly increased from the very low zero PR reported in July 2003:

↑ Participation		↓ Participation	
July '04 PR	% Change (July '03)	July '04 PR	% Change (July '03)
(MD) Morris 65.4%	(LD) Hunterdon ∞%	(LD) Atlantic 18.7%	(LD) Cape May (36.6%)
(MD) Somerset 50.0%	(MD) Somerset 29.7%	(LD) Sussex 18.1%	(MD) Burlington (41.9%)
(MD) Monmouth 48.4%	(MD) Morris 3.8%	(LD) Hunterdon 17.4%	(LD) Sussex (40.1%)

- Counties with participation rates above and below the State average** are in **figure 4** (page 9). Only the **top fifth** of counties (4) in the State had **participation rates above 44 percent**. In contrast, a new trend of counties with **lower participation rates** is forming with five counties having a PR less than 20 percent in July compared to zero counties three months prior. Two-thirds of the counties also demonstrated a decrease from one year ago (figure 3).

FOOD STAMP PROGRAM (See pages 10-12 for additional information)

- Figure 5 (page 10) reveals that during the month of July 2004, 165,202 households and 348,053 persons (including 171,534 adults and 176,519 children) participated in the Food Stamp Program representing nearly similar increases of 9.7 and 8.4 percent, respectively, over one year ago (July 2003).
- The one-year rolling statewide changes are also shown, and the rates of change that were lower during late 2002, e.g., ~4.9% for households and 2.9% for total persons (primarily due to a decrease in the number of WFNJ/TANF households and persons at that time over 2001 data), have steadily increased (e.g., rising to 8.9% and 8.8% in July 2003, respectively) reaching levels nearly two to three times higher (9.7% and 8.4%, respectively) by July 2004. This change appears in part to be a result of a reemergence of WFNJ/TANF participants to levels above late 2001 levels (figures 5 & 6- pages 10-11). Another important observation is that the rates of change initially favoring households over persons during late 2002 and early 2003, equalized by mid-2003 through June 2004, but appears to be trending towards households again this month.
- In differentiation from the dip and subsequent increase for WFNJ/TANF households and persons described above, other low income households and persons have steadily increased since 2001 reaching over 129 thousand households and above 239 thousand persons in July 2004.
- Notably, counties reflected in figure 7 (page 12) having the highest total household caseload percentage increase since July 2003 were among the mid-density (MD) and high-density (HD) strata including Gloucester (17.8% ↑), Morris (23.6 % ↑), and Passaic (16.0% ↑) counties while Hunterdon (LD), Warren (LD), and Monmouth (MD) counties had lighter household caseload increases or a decrease (Hunterdon only) in the state.
- Of late, the most active counties during 1 and 3-month periods ending July 2004 include:

Total Households by County			
1 mo ↑ Caseload %	3 mo ↑ Caseload %	1 mo ↓ Caseload %	3 mo ↓ Caseload %
(MD) Mercer 3.0%	(HD) Passaic 5.0%	(MD) Burlington (0.6%)	(LD) Sussex (0.9%)
(HD) Union 2.4%	(MD) Mercer 4.3%	(LD) Cape May (0.7%)	(MD) Monmouth (2.1%)
(LD) Sussex 2.3%	(HD) Union 4.3%	(LD) Warren (1.4%)	(LD) Cape May (9.5%)
Statewide 1.2%	Statewide 2.5%	Statewide 1.2%	Statewide 2.5%

- Currently, the most active counties during 1 and 3-month periods ending July 2004 include:

Total Persons (Adults & Children) by County			
1 mo ↑ Caseload %	3 mo ↑ Caseload %	1 mo ↓ Caseload %	3 mo ↓ Caseload %
(MD) Gloucester 3.1%	(HD) Union 5.6%	(MD) Burlington (0.2%)	(LD) Warren (2.2%)
(MD) Mercer 2.7%	(HD) Passaic 4.4%	(MD) Morris (0.8%)	(LD) Sussex (2.7%)
(HD) Union 2.7%	(HD) Mercer 4.4%	(LD) Warren (2.4%)	(LD) Cape May (8.9%)
Statewide 1.0%	Statewide 2.4%	Statewide 1.0%	Statewide 2.4%

EMERGENCY ASSISTANCE (See pages 13-14 for additional information)

- In July 2004, Emergency Assistance (EA) payments were made for over 6,200 eligible TANF families (figure 8-page 13) and 1,026 SSI recipients (figure 9-page 14) in New Jersey. For TANF families, this represents a sharp 60.9 percent increase since July 2003 (and 125% since July 2002).
- The one-year rolling statewide caseload changes are also shown, and the rates of change for total EA payments have increased 2.5-fold since late 2002-early 2003 (~24% versus 60.9% currently).
- This recent increase since mid-2003 appears to be primarily due to a significant increase in Temporary Rental Assistance (TRA) for 2,944 families.
- Statewide, TRA has dramatically risen 271 percent (~ two-fold higher rate) since July 2003 while other TANF-EA families (including back rent, back utilities, security deposits, furnishings, clothing, and food allowance, or transitional housing) have increased only 15.0 percent (less than the 2003 rate) over the same time period. This contrasts with emergency shelter placements that have modestly decreased over 11 percent from one year ago and motel placements for 443 families that have also decreased in a similar fashion (10.7%) from their July 2003 levels. This finding would be in agreement with desired goals to reduce motel residence for this population.
- Currently, the most active counties (figure 9) providing total EA since June 2003 include:

Total WFNF/TANF Families Receiving EA by County	
1 Yr ↑ Caseload %	1 Yr. ↓ Caseload %
(LD) Warren 260%	(HD) Passaic (17.4%)
(HD) Union 116%	(MD) Somerset (13.5%)
(MD) Burlington 109%	(LD) Sussex (6.7%)
Statewide 60.9%	Statewide 60.9%

GENERAL ASSISTANCE (See pages 15-16 for additional information)

- A review of figure 10 (page 15) data demonstrates that there has been a 14.9% growth in the total number of general assistance (GA) persons aided (35,653) in New Jersey compared to the prior year ending July 2003 (31,024 GA people).
- However, beginning in December 2002, one can see a divergence appear between the number of employable and unemployable persons aided. This is revealed by the one-year rolling statewide changes which show that the rates of change for employable persons have at times nearly tripled those of unemployable persons (e.g., 23% vs. 8.5% in May 2003, respectively). However, during 2004 this disparity in rates of change significantly diminished, and currently rates between the two groups are similar at about 13-15 percent. Nevertheless, this has resulted in 5,247 more employable than unemployable persons assisted statewide in July 2004 compared to 1,663 [4,250] more employable persons aided in July 2002 [2003].
- At the county level, figure 11 (page 16) shows that the low and medium-counties including Cape May (LD), Burlington, and Morris (both MD), respectively, showed the highest rates of change providing general assistance to all total (unemployable and employable) persons

while counties having low and medium density including Cape May and Salem (both LD), as well as Burlington (MD) had the highest gains in one-year rates of change for employable persons aided.

- At present, the most active counties during 1 and 12-month periods ending July 2004 include:

Total Persons Aided (Employable & Unemployable) by County			
1 mo ↑ Caseload %	1 Yr ↑ Caseload %	1 mo ↓ Caseload %	1 Yr ↓ Caseload %
(HD) Essex 3.0%	(MD) Burlington 26.9%	(MD) Monmouth (4.0%)	(HD) Bergen (0.4%)
(MD) Mercer 2.8%	(MD) Morris 20.8%	(MD) Somerset (12.9%)	(LD) Hunterdon (4.7%)
(MD) Gloucester 2.7%	(LD) Cape May 20.6%	(LD) Cape May (13.1%)	(MD) Somerset (6.1%)
Statewide 0.5%	Statewide 14.9%	Statewide 0.5%	Statewide 14.9%

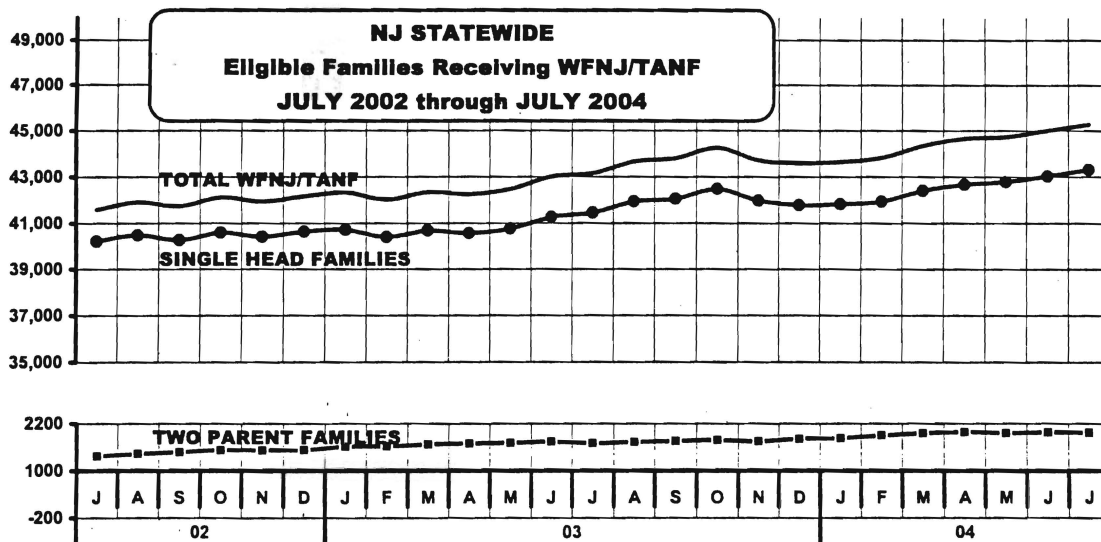
CHILD SUPPORT AND PATERNITY (See pages 17-19 for additional information)

- Figure 12 (page 17) discloses that through the third quarter of FFY 2004, the total collection of the Child Support and Paternity Program was over 717 million dollars, an increase of 7.2 percent over the same period for FFY 2003.
- Although total distributions increased over 6 percent for the year, there was a slight decrease in the percent of collections distributed from 95.3 percent in the same period last year to 94.7 percent currently. This pattern is further illustrated by an equivalent rate of 96.0% for the first three-quarters of FFY 2002.
- Further analysis reveals that there was a mild reduction in collections from state residents (8.7% ↓ in state tax) resulting in a loss of over 360 thousand dollars for the first nine months of the fiscal year. This was balanced by a simultaneous 4.0 percent increase in collections from other states gaining 1.3 million dollars, as well as a 25% gain in federal taxes collected. The reason for this finding is unclear. One potential explanation in part, among many possibilities, would be to investigate whether adults supporting their children have lost employment within the state and moved out of state.
- At the county level, figure 13 (page 18) exhibits modest improvement for two low-density counties (Cape May and Salem) and one high-density county (Hudson) to reduce the number of open cases from one year ago by more than one percent. Hunterdon County had the highest percentage increase (13.3% ↑) in caseload within New Jersey. Paradoxically, Hudson County demonstrates the best reduction (4.4% ↓) in the state while another neighboring high-density county, Essex County (5.3% ↑), had the fifth-highest percentage rise. Overall, the statewide level increased 2.2 percent (currently over 421 thousand open cases) since the second quarter 2003 (see figure 14-page 19).

Figure 1
WFNJ/TANF
PROGRAM

STATEWIDE NUMBER OF APPLICATIONS AND TERMINATIONS DURING JULY 2004,
AND NUMBER OF ELIGIBLE FAMILIES RECEIVING WFNJ/TANF FOR JULY 2004

JULY 2002 THROUGH JULY 2004						
	Applicn's Approved	Term's	Singl-Head Families	2- Parent Families	Total WFNJ/TANF	%CHNG (1 Yr.)
2002 JUL	3,754	3,345	40,212	1,371	41,583	
AUG	4,983	2,720	40,479	1,428	41,907	
SEP	3,863	3,230	40,263	1,471	41,734	
OCT	4,215	2,786	40,585	1,526	42,111	(5.7)
NOV	4,855	2,881	40,412	1,516	41,928	(4.8)
DEC	3,945	3,047	40,631	1,527	42,158	(4.4)
2002 AVERAGE	4,192	3,500	40,894	1,495	42,389	
2003 JAN	3,706	3,542	40,719	1,603	42,322	(3.6)
FEB	3,278	3,585	40,397	1,618	42,015	(3.0)
MAR	3,577	3,253	40,677	1,662	42,339	(2.5)
APR	3,636	3,728	40,558	1,689	42,247	(1.5)
MAY	3,771	3,556	40,756	1,706	42,462	1.4
JUN	3,910	3,366	41,264	1,742	43,006	2.8
JUL	3,781	3,638	41,448	1,701	43,149	3.8
AUG	3,843	3,331	41,933	1,728	43,661	4.2
SEP	3,636	3,503	42,043	1,751	43,794	4.9
OCT	4,035	3,574	42,474	1,781	44,255	5.1
NOV	3,379	3,918	41,973	1,743	43,716	4.3
DEC	3,422	3,546	41,779	1,813	43,592	3.4
2003 AVERAGE	3,665	3,545	41,335	1,711	43,047	
2004 JAN	3,252	3,201	41,814	1,829	43,643	3.1
FEB	3,334	3,148	41,935	1,894	43,829	4.3
MAR	3,764	3,254	42,390	1,949	44,339	4.7
APR	3,832	3,526	42,658	1,987	44,645	5.7
MAY	3,547	3,466	42,767	1,959	44,726	5.3
JUN	3,636	3,360	43,022	1,980	45,002	4.6
JUL	3,875	3,604	43,305	1,968	45,273	4.9
2004 AVG (to date)	3,606	3,366	42,556	1,938	44,494	

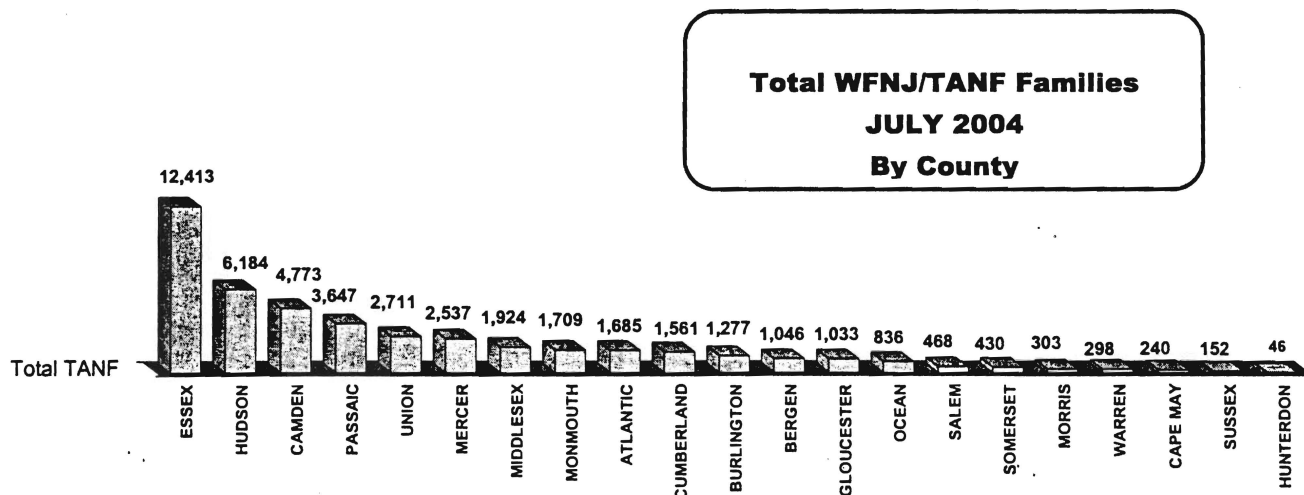


Data is derived from NJ Division of Family Development Ad Hoc Group Special Reports.

Figure 2
WFNJ/TANF
PROGRAM

**NUMBER OF APPLICATIONS AND TERMINATIONS BY COUNTY DURING JULY 2004, AND
NUMBER OF ELIGIBLE FAMILIES RECEIVING WFNJ/TANF REPORTED FOR JULY 2004**

County by Pop Density Stratum	Applicn's Approved	Term's **	Singl-Head Families	2-Parent Families	Total WFNJ/TANF	% Chng (1 Mon)	% Chng (3 Mon)	% Chng (1 Yr)
ATLANTIC	186	168	1,622	63	1,685	1.1	(0.1)	8.2
CAPE MAY	38	50	220	20	240	(4.8) *	(14.6) *	(1.6) *
CUMBERLAND	164	169	1,474	87	1,561	(0.3)	(5.3) *	5.7
HUNTERDON	5	2	44	2	46	7.0 Δ	17.9 Δ	0.0 *
SALEM	50	54	449	19	468	(0.8)	0.6	8.8
SUSSEX	23	16	141	11	152	4.8 Δ	0.0	10.1
WARREN	36	29	252	46	298	2.4	10.4 Δ	27.4 Δ
BURLINGTON	147	109	1,219	58	1,277	3.1 Δ	4.0	12.6
GLOUCESTER	110	80	974	59	1,033	3.0	6.4 Δ	24.6 Δ
MERCER	213	196	2,445	92	2,537	0.7	2.9	3.7
MONMOUTH	163	150	1,622	87	1,709	0.8	0.0	2.9
MORRIS	22	32	283	20	303	(3.2) *	0.7	11.0
OCEAN	68	91	792	44	836	(2.7) *	(6.8) *	(9.5) *
SOMERSET	36	42	410	20	430	(1.4)	4.1	4.4
BERGEN	103	89	961	85	1,046	1.4	3.7	17.5 Δ
CAMDEN	347	326	4,563	210	4,773	0.4	(1.0)	0.3
ESSEX	1,055	967	12,007	406	12,413	0.7	2.1	3.3
HUDSON	449	401	5,933	251	6,184	0.8	2.4	3.8
MIDDLESEX	179	187	1,852	72	1,924	(0.4)	1.9	9.2
PASSAIC	277	257	3,460	187	3,647	0.6	3.5	7.3
UNION	204	189	2,582	129	2,711	0.6	1.3	6.1
NJ TOTAL	3,875	3,604	43,305	1,968	45,273	0.6	1.4	4.9



Data is derived from NJ Division of Family Development Ad Hoc Group Special Reports.

** "Terminations" include cases that received a benefit in the prior month, but did not receive any TANF benefit for the report month.

Δ=higher caseload % change

*=lower caseload % change

FIGURE 3

TANF PARTICIPATION RATES BY COUNTY POPULATION DENSITY STRATUM

APRIL - JULY 2004

					% CHNG (From Jul 03)	
County		April	May	June	July	
Low-Density						
	ATLANTIC	25.2%	26.5%	29.6%	18.7% Δ	(34.8)
	CAPE MAY	50.4%	43.1%	42.9%	27.4%	(36.6) Δ
	CUMBERLAND	23.6%	25.2%	22.9%	19.95%	(21.2)
	HUNTERDON	35.3%	11.8%	15.8%	17.4% Δ	n/d *
	SALEM	55.3%	52.3%	48.7%	45.1%	(18.9)
	SUSSEX	26.5%	22.7%	17.9%	18.1% Δ	(40.1) Δ
	WARREN	44.2%	36.4%	38.5%	38.7%	(18.9)
Mid-Dens						
	BURLINGTON	34.5%	34.0%	33.3%	22.8%	(41.9) Δ
	GLOUCESTER	24.2%	21.5%	22.6%	18.9%	(19.1)
	MERCER	44.4%	44.5%	41.3%	41.2%	1.5
	MONMOUTH	51.2%	43.9%	45.7%	48.4% *	(5.1)
	MORRIS	70.1%	61.6%	60.5%	65.4% *	3.8 *
	OCEAN	32.8%	28.6%	27.1%	25.8%	(2.3)
	SOMERSET	51.5%	45.2%	49.5%	50.0% *	29.7 *
High-Dens						
	BERGEN	44.8%	44.4%	44.4%	37.3%	(5.0)
	CAMDEN	38.6%	37.9%	36.1%	27.3%	(27.3)
	ESSEX	37.5%	35.4%	36.8%	34.8%	3.2
	HUDSON	40.7%	37.8%	34.8%	33.7%	(2.4)
	MIDDLESEX	23.6%	22.3%	23.5%	21.5%	(5.1)
	PASSAIC	27.4%	24.3%	24.9%	26.9%	(5.7)
	UNION	31.4%	31.8%	31.5%	33.3%	(12.2)
NJ TOTAL		36.8%	34.8%	34.6%	32.2%	(7.3)

Δ=lower participation counties

* =higher participation counties

n/d= not determinable; Hunterdon County's Participation Rate was Zero Percent in July 2003

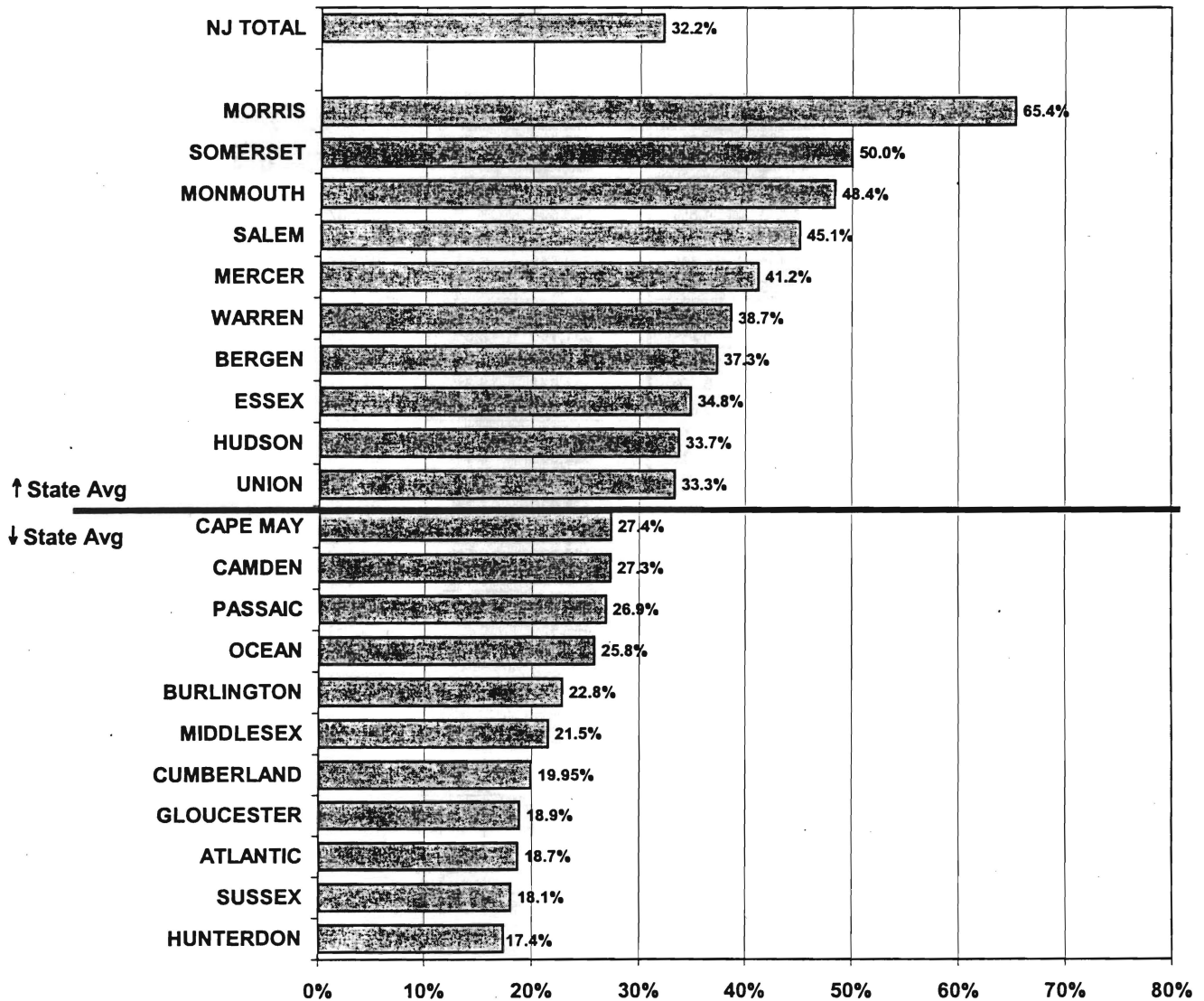
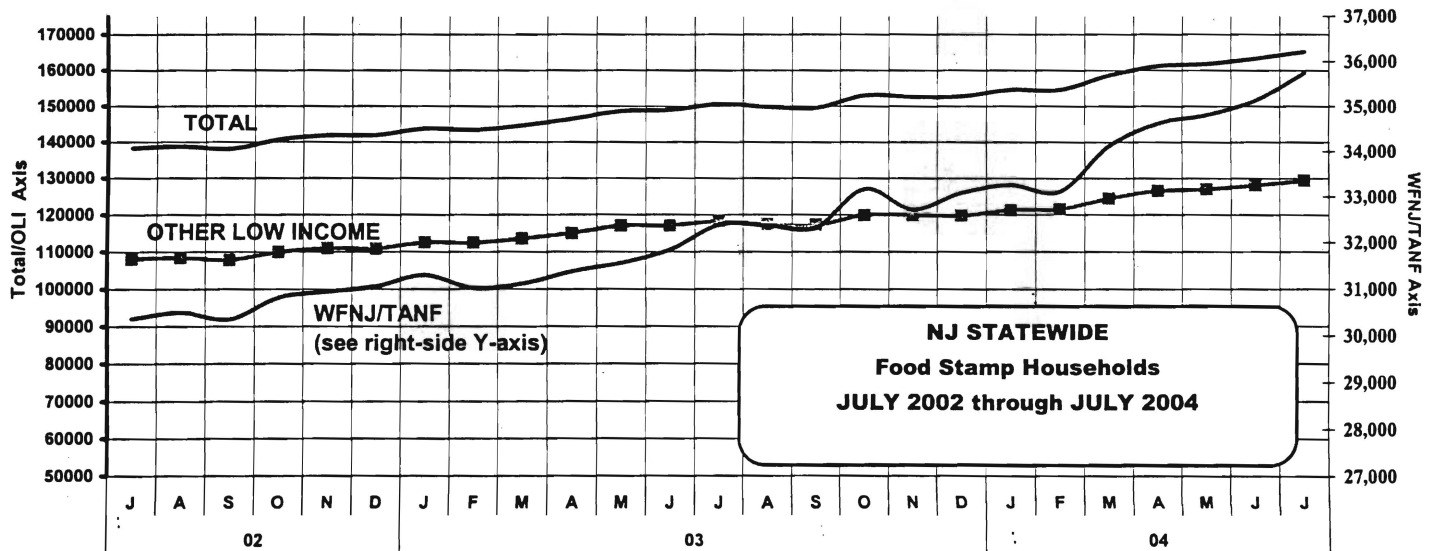
FIGURE 4**TANF PARTICIPATION RATES BY COUNTY****JULY 2004**

Figure 5
FOOD STAMP
PROGRAM

**NUMBER OF PARTICIPATING HOUSEHOLDS, PERSONS, ADULTS
AND CHILDREN FOR JULY 2004 (STATEWIDE)**

PROGRAM		JULY 2002 THROUGH JULY 2004									
		HOUSEHOLDS				PERSONS					
		WFNJ/ TANF	Other low income	TOTAL	% CHNG (1 Yr.)	TOTAL	% CHNG (1 Yr.)	WFNJ/ TANF	Other low income	Adults	Children
2002	JUL	30,361	107,961	138,322		295,127		94,561	200,566	144,609	150,518
	AUG	30,502	108,327	138,829		295,977		94,794	201,183	144,878	151,099
	SEP	30,353	107,774	138,127		293,409		94,073	199,336	143,850	149,559
	OCT	30,819	109,875	140,694	4.9%	298,991	2.9%	95,413	203,578	146,413	152,578
	NOV	30,941	110,923	141,864	4.8%	301,641	2.9%	95,829	205,812	147,684	153,957
	DEC	31,056	110,874	141,930	5.0%	302,035	3.0%	96,061	205,974	147,681	154,354
	2002 AVERAGE	30,860	107,843	138,703		295,795		96,167	199,628	145,152	150,643
2003	JAN	31,298	112,495	143,793	5.3%	305,407	3.8%	96,672	208,735	149,615	155,792
	FEB	31,020	112,383	143,403	4.8%	303,506	3.6%	95,537	207,969	149,327	154,179
	MAR	31,110	113,509	144,619	6.0%	305,808	5.1%	95,654	210,154	151,007	154,801
	APR	31,373	115,028	146,401	6.1%	309,748	5.5%	96,555	213,193	153,009	156,739
	MAY	31,554	117,041	148,595	6.8%	314,790	6.1%	97,225	217,565	155,428	159,362
	JUN	31,846	117,109	148,955	8.2%	317,053	7.9%	98,337	218,716	156,243	160,810
	JUL	32,384	118,192	150,576	8.9%	321,100	8.8%	100,093	221,007	158,270	162,830
	AUG	32,363	117,434	149,797	7.9%	319,181	7.8%	99,741	219,440	157,562	161,619
	SEP	32,319	117,222	149,541	8.3%	317,871	8.3%	99,272	218,599	156,919	160,952
	OCT	33,168	119,869	153,037	8.8%	325,806	9.0%	101,709	224,097	160,583	165,223
	NOV	32,713	119,893	152,606	7.6%	324,904	7.7%	100,178	224,726	159,869	165,035
	DEC	33,080	119,741	152,821	7.7%	326,365	8.1%	101,256	225,109	159,989	166,376
	2003 AVERAGE	32,019	116,660	148,679		315,962		98,519	217,443	155,652	160,310
2004	JAN	33,254	121,304	154,558	7.5%	328,920	7.7%	101,531	227,389	161,703	167,217
	FEB	33,109	121,532	154,641	7.8%	327,257	7.8%	100,723	226,534	161,615	165,642
	MAR	34,111	124,513	158,624	9.7%	334,728	9.5%	103,423	231,305	165,665	169,063
	APR	34,618	126,556	161,174	10.1%	339,783	9.7%	104,933	234,850	168,006	171,777
	MAY	34,808	126,995	161,803	8.9%	341,446	8.5%	105,755	235,691	168,464	172,982
	JUN	35,131	128,166	163,297	9.6%	344,484	8.7%	106,843	237,641	169,643	174,841
	JUL	35,742	129,460	165,202	9.7%	348,053	8.4%	108,714	239,339	171,534	176,519
2004 AVG (to date)		34,396	125,504	159,900		337,810		104,560	233,250	166,661	171,149



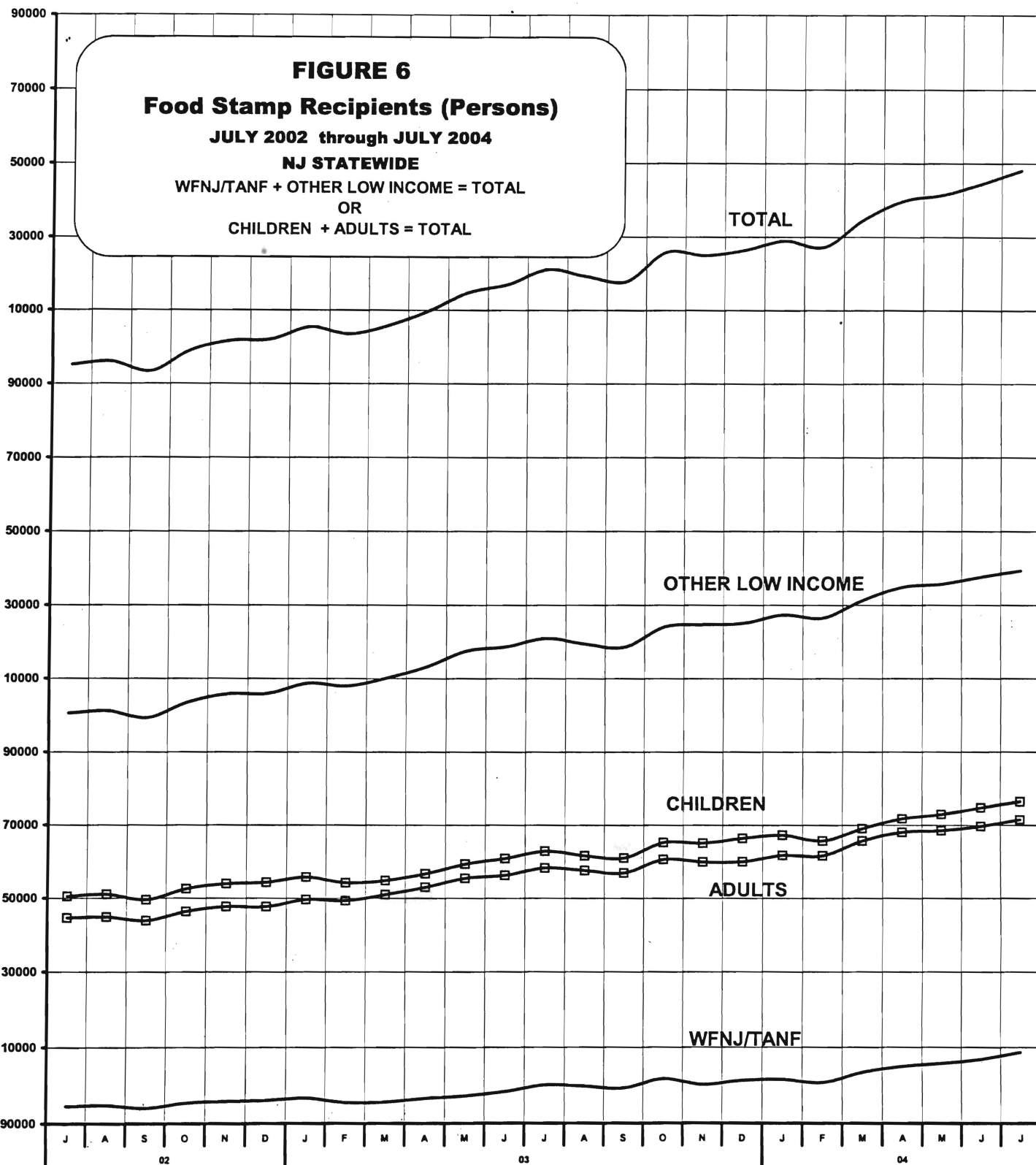


Figure 7

NUMBER OF PARTICIPATING HOUSEHOLDS, PERSONS, ADULTS AND CHILDREN BY COUNTY FOR JULY 2004

FOOD STAMP

PROGRAM

Δ= ↑ Caseload %

* = ↓ Caseload %

County by
Pop Density Strata

	HOUSEHOLDS				PERSONS					
	WFNJ/ TANF	Other low income	TOTAL	% Chng (1 Yr)	TOTAL	% Chng (1 Yr)	WFNJ/ TANF	Other low income	Adults	Children
ATLANTIC	1,251	5,697	6,948	10.1	14,286	7.3	3,757	10,529	7,234	7,052
CAPE MAY	183	1,500	1,683	6.7	3,497	3.2	595	2,902	1,811	1,686
CUMBERLAND	1,167	4,557	5,724	7.8	13,379	4.9	3,756	9,623	5,969	7,410
HUNTERDON	29	327	356	(0.6) *	581	0.7	71	510	382	199
SALEM	365	1,322	1,687	14.5	3,741	12.5	1,130	2,611	1,803	1,938
SUSSEX	101	683	784	11.0	1,642	9.2	317	1,325	885	757
WARREN	217	1,176	1,393	4.7	2,987	4.8	710	2,277	1,618	1,369
BURLINGTON	828	3,618	4,446	9.2	9,306	8.0	2,443	6,863	4,699	4,607
GLOUCESTER	743	2,722	3,465	17.8 Δ	7,285	Δ 14.7	2,209	5,076	3,724	3,561
MERCER	1,925	5,426	7,351	7.3	14,931	4.1	5,833	9,098	7,362	7,569
MONMOUTH	1,354	5,375	6,729	2.4 *	14,111	1.7	4,102	10,009	7,092	7,019
MORRIS	198	1,972	2,170	23.6 Δ	3,561	Δ 26.3	577	2,984	2,395	1,166
OCEAN	555	5,012	5,567	10.2	13,729	9.4	1,771	11,958	5,931	7,798
SOMERSET	262	1,893	2,155	8.6	3,723	8.4	733	2,990	2,215	1,508
BERGEN	813	7,207	8,020	10.6	13,506	12.4	2,341	11,165	9,040	4,466
CAMDEN	3,580	10,941	14,521	6.0	33,341	4.7	11,324	22,017	15,252	18,089
ESSEX	10,613	22,781	33,394	9.6	71,878	7.3	32,218	39,660	33,796	38,082
HUDSON	5,151	17,995	23,146	7.9	47,900	7.2	15,242	32,658	24,143	23,757
MIDDLESEX	1,421	6,074	7,495	11.6	14,829	12.4	4,158	10,671	7,775	7,054
PASSAIC	2,955	15,793	18,748	16.0 Δ	40,038	Δ 15.3	9,113	30,925	18,688	21,350
UNION	2,031	7,389	9,420	10.6	19,802	10.3	6,314	13,488	9,720	10,082
NJ TOTAL	35,742	129,460	165,202	9.7	348,053	8.4	108,714	239,339	171,534	176,519

Total Food Stamp Recipients JULY 2004 By County

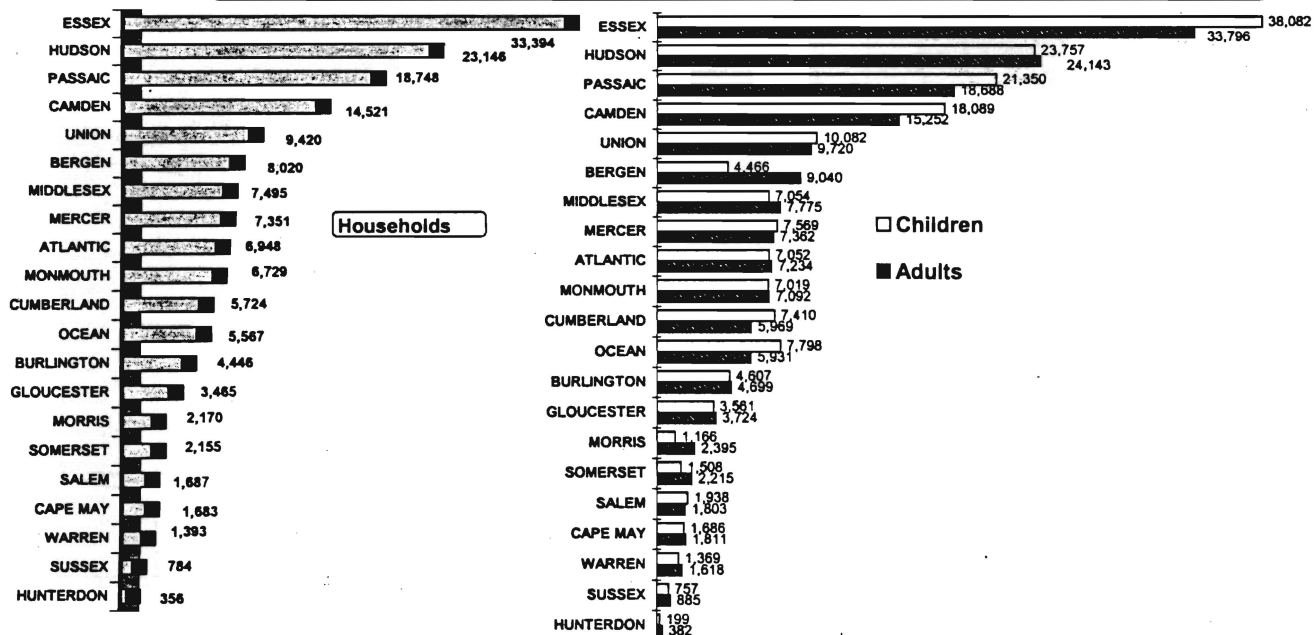


Figure 8.
TANF
NUMBER OF ELIGIBLE FAMILIES RECEIVING EMERGENCY ASSISTANCE PAYMENTS
FOR JULY 2004 -STATEWIDE (UNDUPLICATED CASES)

**EMERGENCY
ASSISTANCE**

JULY 2002 THROUGH JULY 2004

	Total Families Receiving EA	% CHNG (1 YR)	Temp Rent Assist	% CHNG (1 YR)	Motel Housing	% CHNG (1 YR)	Emerg Shelter	% CHNG (1 YR)	Other TANF-EA	% CHNG (1 YR)
2002 JUL	2,779		351		459		519		1,450	
AUG	2,889		353		515		505		1,516	
SEP	3,030		348		587		466		1,629	
OCT	3,324	26.1%	380	54.5%	633	50.0%	494	4.2%	1,817	21.6%
NOV	3,008	29.3%	389	45.1%	482	35.4%	422	-11.9%	1,715	40.1%
DEC	3,169	24.6%	436	46.3%	577	27.7%	450	4.2%	1,706	25.3%
2002 AVERAGE	2,826		347		516		438		1,525	
2003 JAN	3,301	24.5%	470	66.7%	612	12.9%	496	21.0%	1,723	21.6%
FEB	2,702	19.3%	485	55.9%	461	26.0%	445	31.7%	1,311	4.9%
MAR	3,223	24.2%	570	92.6%	615	13.1%	449	11.7%	1,589	17.4%
APR	3,475	23.6%	631	91.2%	503	-8.2%	460	.8.0%	1,881	24.7%
MAY	3,624	30.9%	649	89.8%	579	38.2%	460	10.3%	1,936	21.7%
JUN	3,630	38.8%	705	103%	557	7.9%	451	11.1%	1,917	42.4%
JUL	3,891	40.0%	793	126%	496	8.1%	442	-14.8%	2,160	49.0%
AUG	4,043	39.9%	905	156%	485	-5.8%	454	-10.1%	2,199	45.1%
SEP	4,376	44.4%	1,053	203%	467	-20.4%	485	4.1%	2,371	45.5%
OCT	5,100	53.4%	1,244	227%	577	-8.8%	546	10.5%	2,733	50.4%
NOV	4,322	43.7%	1,388	257%	445	-7.7%	469	11.1%	2,020	17.8%
DEC	5,248	65.6%	1,730	297%	563	-2.4%	518	15.1%	2,437	42.8%
2003 AVERAGE	3,911		885		530		473		2,023	
2004 JAN	4,886	48.0%	1,854	294%	543	-11.3%	436	-12.1%	2,053	19.2%
FEB	4,877	80.5%	2,006	314%	446	-3.3%	446	0.2%	1,979	51.0%
MAR	5,976	85.4%	2,271	298%	521	-15.3%	462	2.9%	2,542	60.0%
APR	5,770	66.0%	2,427	285%	436	-13.3%	437	-5.0%	2,470	31.3%
MAY	5,707	57.5%	2,601	301%	384	-33.7%	451	-2.0%	2,271	17.3%
JUN	6,151	69.4%	2,795	296%	410	-26.4%	417	-7.5%	2,529	31.9%
JUL	6,262	60.9%	2,944	271%	443	-10.7%	392	-11.3%	2,483	15.0%
2003 AVG (to date)	5,661		2,414		455		434		2,332	

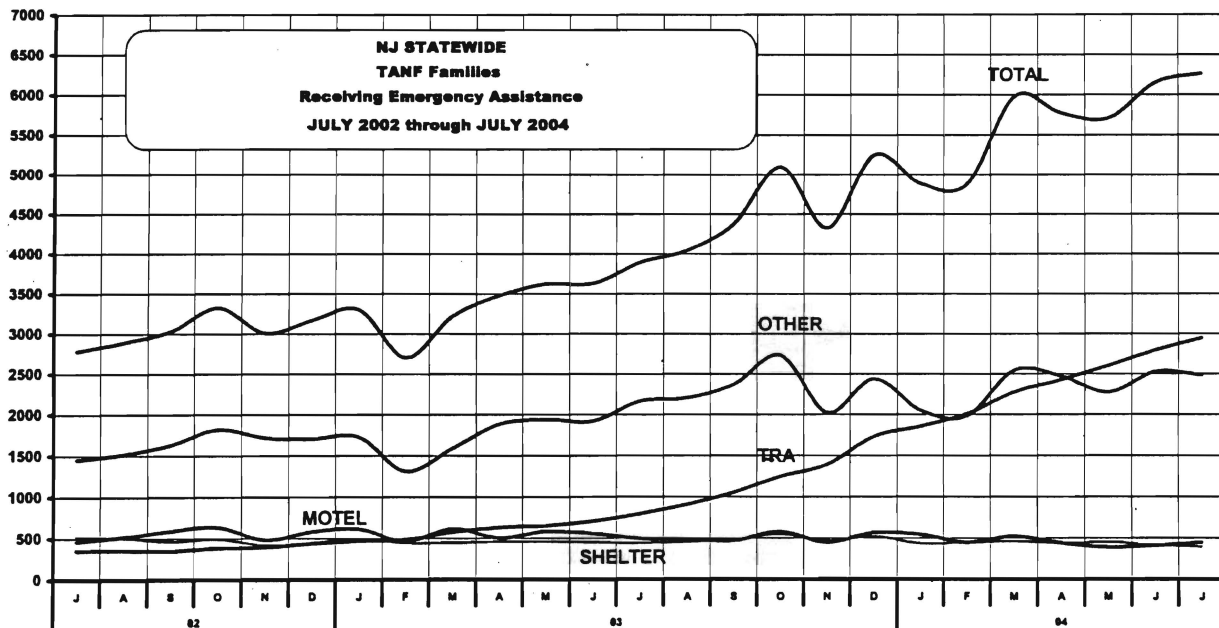


Figure 9
TANF/SSI**NUMBER OF ELIGIBLE FAMILIES RECEIVING EMERGENCY ASSISTANCE PAYMENTS**
BY COUNTY & POPULATION DENSITY STRATUM (UNDUPLICATED CASES)**EMERGENCY**
ASSISTANCE

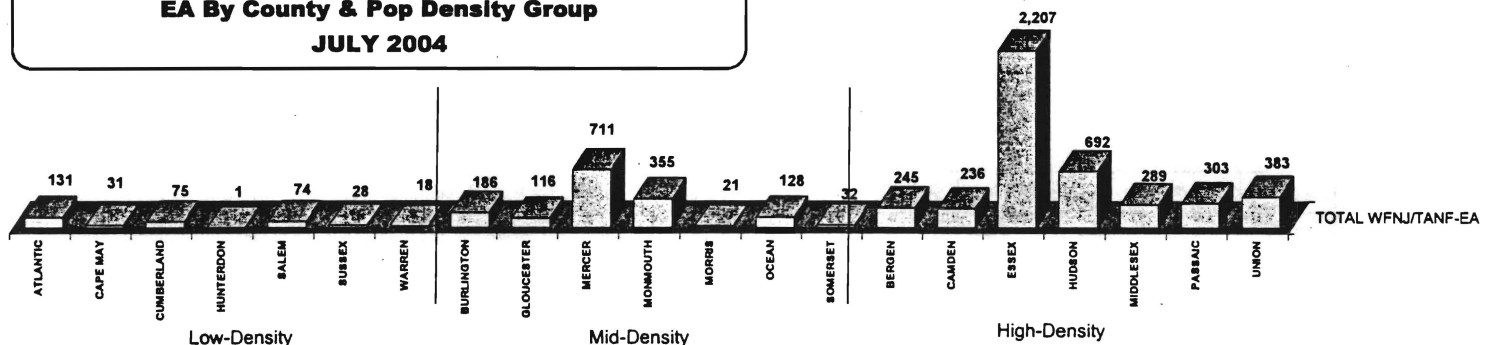
JULY 2004

WFNJ/TANF Families Receiving Emergency Assistance**SSI**

County	TOTAL WFNJ/TANF-EA	% CHNG (From Jul 03)	Temp Rent Assist.	% Total	Motel Housing	% Total	Emergency Shelter	% Total	Other WFNJ/TANF-EA	% Total	Receipts Receiving EA*
ATLANTIC	131	18.0%	42	32.1%	0	0.0%	25	19.1%	64	48.9%	87
CAPE MAY	31	10.7%	12	38.7%	10	32.3%	0	0.0%	9	29.0%	18
CUMBERLAND	75	4.2%	19	25.3%	11	14.7%	1	1.3%	44	58.7%	15
HUNTERDON	1	n/d	0	0.0%	0	0.0%	1	100.0%	0	0%	3
SALEM	74	8.8%	15	20.3%	10	13.5%	0	0.0%	49	66.2%	23
SUSSEX	28	-6.7% *	16	57.1%	3	10.7%	2	7.1%	7	25.0%	19
WARREN	18	260% Δ	7	38.9%	4	22.2%	3	16.7%	4	22.2%	11
BURLINGTON	186	109% Δ	36	19.4%	79	42.5%	8	4.3%	63	33.9%	72
GLOUCESTER	116	43.2%	56	48.3%	6	5.2%	23	19.8%	31	26.7%	19
MERCER	711	58.0%	367	51.6%	23	3.2%	40	5.6%	281	39.5%	143
MONMOUTH	355	8.9%	90	25.4%	135	38.0%	0	0.0%	130	36.6%	28
MORRIS	21	61.5%	5	23.8%	4	19.0%	4	19.0%	8	38.1%	16
OCEAN	128	23.1%	51	39.8%	35	27.3%	0	0.0%	42	32.8%	72
SOMERSET	32	-13.5% *	11	34.4%	4	12.5%	4	12.5%	13	40.6%	12
BERGEN	245	108%	111	45.3%	3	1.2%	17	6.9%	114	46.5%	133
CAMDEN	236	38.8%	78	33.1%	34	14.4%	13	5.5%	111	47.0%	30
ESSEX	2,207	101%	1376	62.3%	1	0.0%	172	7.8%	658	29.8%	131
HUDSON	692	83.1%	401	57.9%	13	1.9%	2	0.3%	276	39.9%	5
MIDDLESEX	289	69.0%	54	18.7%	26	9.0%	22	7.6%	187	64.7%	65
PASSAIC	303	-17.4% *	6	2.0%	23	7.6%	31	10.2%	243	80.2%	110
UNION	383	116% Δ	191	49.9%	19	5.0%	24	6.3%	149	38.9%	14
NJ TOTAL	6,262	60.9%	2944	47.0%	443	7.1%	392	6.3%	2,483	39.7%	1,026

*SSI-EA now includes pay code 24 Δ= ↑ Caseload %

* = ↓ Caseload %

**Number WFNJ/TANF Families Receiving
EA By County & Pop Density Group
JULY 2004**

Derived from NJ Division of Family Development FAMIS Reports #FM456, #FM457 and #FM430-03A

n/d= not determinable; Hunterdon County's Participation Rate was Zero Percent in July 2003

Figure 10
GENERAL
ASSISTANCE
PROGRAM

NUMBER OF EMPLOYABLE AND UNEMPLOYABLE RECIPIENTS
AND EMERGENCY ASSISTANCE PAYMENTS FOR JULY 2004 -STATEWIDE

JULY 2002 THROUGH JULY 2004

All Persons Aided

Emergency Assistance Payments

	Employable	% Chng (1 Yr)	Unemployable	% Chng (1 Yr)	Total	% Chng (1 Yr)	Temporary Rental Assistance	Other GA-EA	Total	% Chng (1 Yr)
2002 JUL	13,483		11,820		25,303		1,499	2,208	3,707	
AUG	13,533		11,898		25,431		1,517	2,415	3,932	
SEP	13,352		12,016		25,368		1,536	1,912	3,448	
OCT	13,952	14.2%	12,332	12.3%	26,284	13.3%	1,545	2,575	4,120	18.5%
NOV	13,880	17.4%	12,331	9.7%	26,211	13.7%	1,595	1,935	3,530	12.9%
DEC	14,963	19.1%	12,510	10.7%	27,473	15.1%	1,645	2,363	4,008	19.5%
2002 AVERAGE	13,883		11,916		25,799		1,530	2,132	3,662	
2003 JAN	15,818	19.9%	12,614	12.0%	28,432	16.2%	1,712	2,293	4,005	31.8%
FEB	16,274	20.4%	12,436	6.0%	28,710	13.7%	1,724	2,203	3,927	20.1%
MAR	17,241	20.4%	12,772	11.7%	30,013	16.5%	1,843	2,448	4,291	9.7%
APR	17,337	20.2%	12,893	7.6%	30,230	14.5%	1,892	2,752	4,644	17.4%
MAY	17,356	23.0%	12,918	8.5%	30,274	16.3%	1,895	2,754	4,649	31.5%
JUN	17,635	27.3%	13,154	11.8%	30,789	20.2%	2,100	2,710	4,810	37.8%
JUL	17,637	30.8%	13,387	13.3%	31,024	22.6%	2,118	2,973	5,091	37.3%
AUG	17,531	29.5%	13,453	13.1%	30,984	21.8%	2,285	2,819	5,104	29.8%
SEP	17,434	30.6%	13,603	13.2%	31,037	22.3%	2,317	3,002	5,319	54.3%
OCT	17,357	24.4%	13,814	12.0%	31,171	18.6%	2,390	2,732	5,122	24.3%
NOV	16,989	22.4%	13,690	11.0%	30,679	17.0%	2,442	2,139	4,581	29.8%
DEC	17,293	15.6%	13,776	10.1%	31,069	13.1%	2,570	2,759	5,329	33.0%
2003 AVERAGE	17,159		13,209		30,368		2,107	2,632	4,739	
2004 JAN	18,067	14.2%	13,770	9.2%	31,837	12.0%	2,447	2,729	5,176	29.2%
FEB	19,030	16.9%	13,823	11.2%	32,853	14.4%	2,813	3,356	6,169	57.1%
MAR	19,898	15.4%	14,371	12.5%	34,269	14.2%	2,992	3,589	6,581	53.4%
APR	20,091	15.9%	14,699	14.0%	34,790	15.1%	3,129	3,464	6,593	42.0%
MAY	19,801	14.1%	14,731	14.0%	34,532	14.1%	3,274	3,404	6,678	43.6%
JUN	20,426	15.8%	15,054	14.4%	35,480	15.2%	3,374	3,313	6,687	39.0%
JUL	20,450	15.9%	15,203	13.6%	35,653	14.9%	3,480	3,339	6,819	33.9%
2004 AVG (to date)	19,680		14,522		34,202		3,073	3,313	6,386	

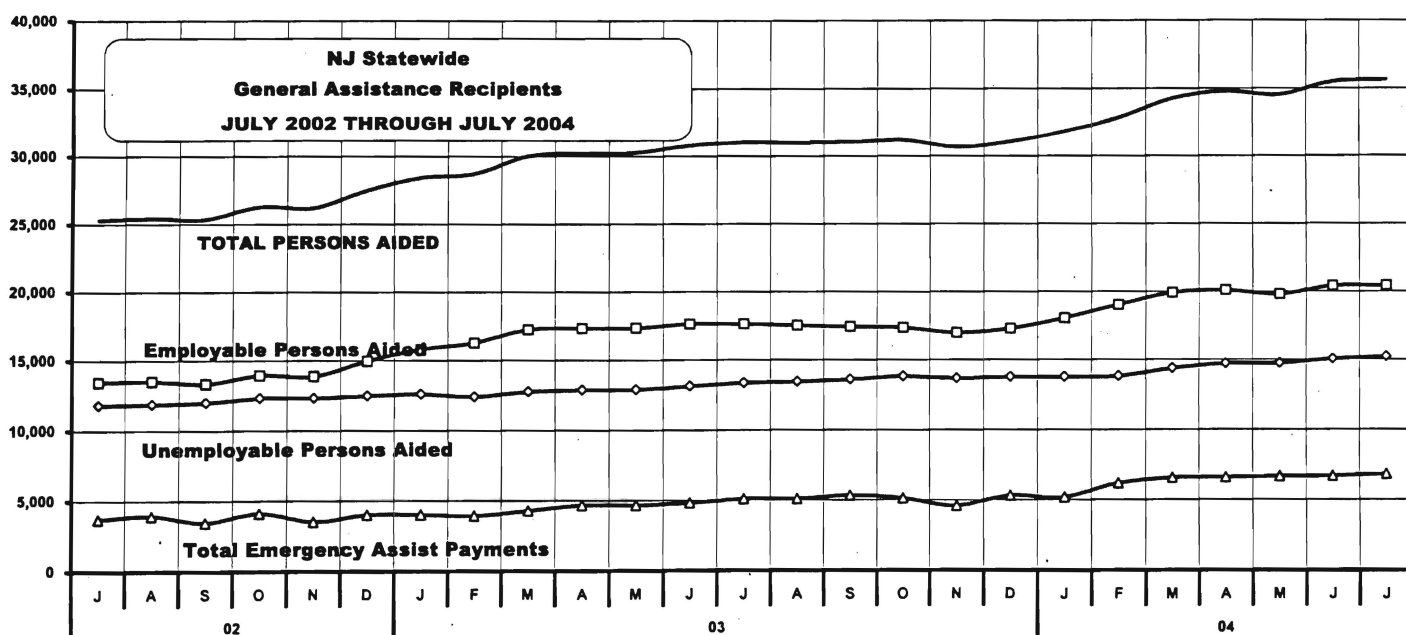


FIGURE 11**GENERAL
ASSISTANCE
PROGRAM****EMPLOYABLE AND UNEMPLOYABLE RECIPIENTS
AND EMERGENCY ASSISTANCE RECIPIENTS BY COUNTY & POPULATION DENSITY STRATUM****JULY 2004**

County	Total Persons Aided						Emergency Assistance Payments			
	Employable	% Chng (From Jul 03)	Unemployable	% Chng (From Jul 03)	Total	% Chng (From Jul 03)	Temporary Rental Assist.	Other GA-EA	Total	% Chng (From Jul 03)
ATLANTIC	945	19.3%	780	20.2%	1,725	19.7%	147	86	233	37.1%
CAPE MAY	174	33.8% Δ	165	9.3%	339	20.6% Δ	70	46	116	84.1% Δ
CUMBERLAND	772	4.6%	688	15.2%	1,460	9.4%	31	86	117	64.8%
HUNTERDON	47	-27.7% *	76	18.8%	123	-4.7% *	20	22	42	82.6% Δ
SALEM	317	45.4% Δ	203	-9.0% *	520	17.9%	15	56	71	-11.3% *
SUSSEX	68	-15.0% *	96	15.7%	164	0.6%	31	44	75	23.0%
WARREN	165	18.7%	119	5.3%	284	12.7%	74	20	94	32.4%
BURLINGTON	497	33.6% Δ	508	21.0%	1,005	26.9% Δ	40	192	232	95.0% Δ
GLOUCESTER	391	21.1%	374	11.0%	765	15.9%	28	110	138	74.7%
MERCER	1,447	2.3%	1,121	17.6%	2,568	8.5%	357	234	591	57.2%
MONMOUTH	434	5.3%	577	-3.2% *	1,011	0.3%	198	144	342	16.3%
MORRIS	170	2.4%	272	36.0% Δ	442	20.8% Δ	32	33	65	22.6%
OCEAN	346	18.1%	531	13.7%	877	15.4%	60	90	150	16.3% *
SOMERSET	141	-30.2% *	184	27.8% Δ	325	-6.1% *	69	41	110	5.8% *
BERGEN	573	5.3%	614	-5.2% *	1,187	-0.4% *	197	86	283	26.9%
CAMDEN	1,645	11.1%	1,779	19.4%	3,424	15.2%	268	322	590	60.8%
ESSEX	5,579	16.1%	2,441	29.6% Δ	8,020	19.9%	840	1,136	1,976	28.1%
HUDSON	2,561	20.6%	1,804	11.2%	4,365	16.5%	488	229	717	24.9%
MIDDLESEX	482	28.5%	647	8.6%	1,129	16.3%	100	119	219	20.3%
PASSAIC	2,205	24.1%	1,309	2.7%	3,514	15.1%	261	128	389	20.4%
UNION	1,491	25.7%	915	4.6%	2,406	16.7%	154	115	269	43.9%
NJ TOTAL	20,450	15.9%	15,203	13.6%	35,653	14.9%	3,480	3,339	6,819	33.9%

Δ = ↑ Caseload %

* = ↓ Caseload %

Source: NJ Division of Family Development, GA Fiscal Unit

FIGURE 12**CHILD SUPPORT
AND PATERNITY****CHILD SUPPORT AND PATERNITY COLLECTIONS****State Summary**Comparison of FFY 2003 and FFY 2004

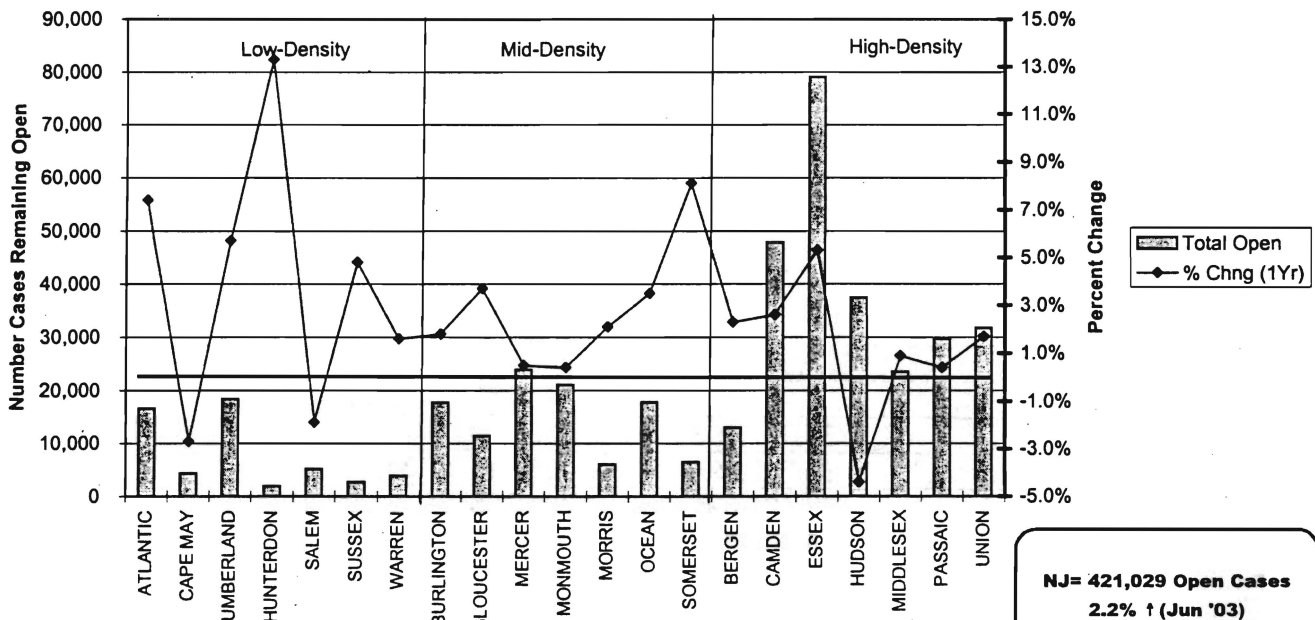
COLLECTION SOURCE	10/02-6/03	10/03-6/04	Dollar Change	% Change
Federal Tax	\$27,987,843	\$35,006,979	\$7,019,136	25.1%
State Tax	4,157,460	3,796,053	(361,407)	-8.7%
Unempl. Ins. Ben.	31,367,798	29,659,655	(1,708,143)	-5.4%
Income Withholding	434,282,894	469,063,623	34,780,729	8.0%
From Other States	32,421,691	33,731,665	1,309,974	4.0%
Other/Own Behalf	138,750,416	146,139,443	7,389,027	5.3%
Admin Enforce				
TOTAL COLLECTION	\$668,968,102	\$717,397,418		7.2%
TOTAL DISTRIBUTION*	\$637,839,560	\$679,169,758		6.5%
Percent of Collections Distributed	95.3%	94.7%		

* Includes money sent to other states

Distributed amount represents collections reported and recognized by the Federal Office of
Child Support Enforcement for calculating incentives and annual report to Congress

Source: DFD Office of Child Support and Paternity Programs

Figure 13: Child Support & Paternity Cases Open By County and Pop Density Stratum
(Quarter Ending JUNE 2004)



Data Sources: Automated Child Support Enforcement System #CS199-3

FIGURE 14**CHILD SUPPORT
AND PATERNITY****NUMBER OF CASES REMAINING OPEN****QUARTER ENDING JUNE 2004**

	<u>CASES WITH ORDERS</u>			<u>OTHER CASES (1)</u>		TOTAL TANF AND FOSTER CARE	TOTAL NON- TANF	TOTAL ALL CASES	% CHNG (Since Jun 03)
	TANF AND FOSTER CARE	TANF AND FOSTER CARE ARREARS (2)	NON- TANF	TANF AND FOSTER CARE	NON- TANF				
ATLANTIC	1,236	3,132	8,987	1,517	1,810	5,885	10,797	16,682	7.4%
CAPE MAY	251	957	2,914	128	136	1,336	3,050	4,386	-2.7%
CUMBERLAND	1,722	5,577	10,073	484	610	7,783	10,683	18,466	5.7%
HUNTERDON	63	193	1,625	48	45	304	1,670	1,974	13.3%
SALEM	557	1,482	2,813	224	128	2,263	2,941	5,204	-1.9%
SUSSEX	152	336	2,026	72	149	560	2,175	2,735	4.8%
WARREN	287	834	2,580	145	107	1,266	2,687	3,953	1.6%
BURLINGTON	1,114	2,989	11,321	936	1,413	5,039	12,734	17,773	1.8%
GLOUCESTER	845	2,386	7,140	416	710	3,647	7,850	11,497	3.7%
MERCER	2,291	5,695	11,882	2,171	1,907	10,157	13,789	23,946	0.5%
MONMOUTH	1,795	4,762	11,954	1,102	1,516	7,659	13,470	21,129	0.4%
MORRIS	263	571	4,804	181	304	1,015	5,108	6,123	2.1%
OCEAN	963	3,460	11,844	582	1,020	5,005	12,864	17,869	3.5%
SOMERSET	370	858	4,615	308	372	1,536	4,987	6,523	8.1%
BERGEN	525	1,457	9,573	656	878	2,638	10,451	13,089	2.3%
CAMDEN	4,527	13,098	22,521	3,476	4,234	21,101	26,755	47,856	2.6%
ESSEX	7,244	14,883	32,819	13,648	10,492	35,775	43,311	79,086	5.3%
HUDSON	3,032	7,367	19,389	3,705	4,006	14,104	23,395	37,499	-4.4%
MIDDLESEX	1,414	4,115	14,297	1,511	2,299	7,040	16,596	23,636	0.9%
PASSAIC	2,914	5,480	15,928	2,861	2,581	11,255	18,509	29,764	0.4%
UNION	2,100	6,224	17,984	2,598	2,933	10,922	20,917	31,839	1.7%
NJ TOTAL	33,665	85,856	227,089	36,769	37,650	156,290	264,739	421,029	2.2%

Data Sources: Automated Child Support Enforcement System #CS199-3

(1) - Needing location, paternity, or other services to establish an obligation

(2) - Cases with arrears only

Figure 15
WFNJ

WORK FIRST NEW JERSEY STATISTICAL SUMMARY

JULY 2004

COUNTY	CASES REQUIRED TO PARTICIPATE	EMPLOYMENT DIRECTED ACTIVITIES			EMPLOYED OPEN (WFNJ RECIPIENT)	SUPPORT SERVICES ON ACTIVE CASE		EMPLOYED CLOSED	POST ASSISTANCE CHILD CARE
		CWEP	ALL OTHER TRAINING	JOB SEARCH		CHILD CARE	TRAINING REL. EXPENSES		
ATLANTIC	818	1	104	3	162	109	126	64	280
BERGEN	552	53	293	238	115	130	205	15	133
BURLINGTON	600	28	48	77	114	86	109	28	221
CAMDEN	2,541	203	419	281	729	524	652	130	571
CAPE MAY	106	1	8	25	56	5	6	14	62
CUMBERLAND	807	2	269	148	138	63	110	33	214
ESSEX	7,900	268	3,797	589	2,069	1,652	2,518	124	730
GLOUCESTER	583	33	45	51	81	63	3	26	122
HUDSON	3,437	137	1,565	325	721	825	744	97	686
HUNTERDON	23	0	0	7	6	5	0	2	12
MERCER	1,477	24	887	252	283	257	173	49	342
MIDDLESEX	984	0	163	69	268	81	114	53	200
MONMOUTH	952	0	563	138	305	255	335	38	315
MORRIS	159	86	35	25	41	57	40	8	63
OCEAN	376	26	61	28	91	78	77	32	201
PASSAIC	2,091	76	1,038	126	313	320	437	47	294
SALEM	266	7	57	17	71	47	68	13	98
SOMERSET	212	0	100	130	86	37	67	13	79
SUSSEX	83	11	4	11	11	13	3	9	41
UNION	1,447	197	594	224	205	237	333	38	231
WARREN	163	0	83	5	41	14	12	8	24
STATE	25,577	1,153	10,133	2,769	5,906	4,858	6,132	841	4,919

Data is derived from NJ Division of Family Development's FAMIS reports

ACRONYMS

ACSES: Automated Child Support Enforcement System

CASS: Consolidated Assistance and Support System

EMERGENCY ASSISTANCE (EA) - Payments to those eligible for WFNJ/TANF or WFNJ/GA, authorized during the 30 consecutive days immediately following the emergency (defined as a substantial loss of shelter, food, clothing, or household furnishings by fire, flood or other similar disaster) or if the eligible individual or family is in an imminent or actual state of homelessness.

FOOD STAMP PROGRAM (FS) - Authorized by Congress as a nutritional supplement program to provide low income households with more food of greater variety and better nutrition. Program eligibility is based on household income, resources, and expenses for medical, shelter, and dependent care. CWA staff refers certain recipients to the New Jersey Department of Labor for participation in the Food Stamp Employment and Training Program.

FAMIS: Family Assistance Management Information System

GAAS: General Assistance Automated System

OMEGA: Online Management of Economic Goal Achievement

SSI-EA: Supplemental Security Income-Emergency Assistance

WFNJ: Work First New Jersey - Fully implemented July 1, 1997, this is New Jersey's welfare reform program which responds to the requirements of the Federal Personal Responsibility and Work Opportunity Reconciliation Act (**PRWORA**) of 1996. PRWORA establishes Temporary Assistance to Needy Families (**TANF**) as the replacement for AFDC cash assistance. WFNJ includes two segments, **WFNJ/TANF** for families with children, and **WFNJ/GA** (General Assistance) for single adults and couples without dependent children. The emphasis is on achieving self-sufficiency and limits lifetime receipt of financial assistance to a total of five years.

EXPLANATORY NOTES

The Department of Human Services Division of Family Development provides basic income and an opportunity to achieve self-sufficiency for individuals and families served by the Division's programs. The Division provides leadership, direction and supervision to those public agencies responsible for administering those programs and plans for and develops policies to promote self-sufficiency.

County Population-Density Stratum:

Independent Evaluation Consortium. Interim Report. Independent Evaluation of the California Tobacco Control Prevention and Education Program: Wave 2 Data, 1998; Wave 1 and Wave 2 Data Comparisons, 1996-1998. Rockville: Maryland: The Gallup Organization, 1998.

Subsets of process evaluation data for the above report were calculated using data from four evaluation strata prepared by county density including: Media Market, High-density, Medium-density, and Low-density county types.

In this summary report, New Jersey county strata were prepared by equally dividing the state into three groups: Low, Medium (Mid), and High-density. County population density was determined by dividing county population (2000 census) by its area in square miles. High-density counties include Bergen, Camden, Essex, Hudson, Middlesex, Passaic, and Union Counties. Medium-density counties consisted of Burlington, Gloucester, Mercer, Monmouth, Morris, Ocean, and Somerset Counties. Atlantic, Cape May, Cumberland, Hunterdon, Salem, Sussex, and Warren Counties represented low-density counties. Population density in the High-density stratum ranged from 2289 people per square mile in Camden to 12,957 in Hudson County. Mid-density counties had a population density ranging from 526 (Burlington County) to 1552 in Mercer County. The less dense counties ranged from 190 (Salem County) to 450 people per square mile in Atlantic County.

WFNJ Statistical Summary (Figure 15)

Recipients Required to Participate - Calculation of the number of mandatory individuals

Employment Directed Activities (EDA) - From Activities Summary Report (OMEGA report # RM064). Unduplicated count of persons participating in Community Work Experience Program (CWEP), All Other Training, or Job Search.

Number of Persons Employed This Month, Still Receiving TANF – Individuals with open “empl” activity on OMEGA. Ad hoc report.

Participants Receiving Child Care Services - From Issuance Disbursement Summary (OMEGA report # RM703). Total number of active participants who show receipt of Child Care.

Number of Persons Closed on FAMIS Due to Employment- From FAMIS report # FM463.

Post TANF and Receiving Child Care - Persons no longer in receipt of TANF but still receiving child care. From Issuance Disbursement Summary (OMEGA report # RM703).