

NJ Periodical

New Jersey *Outdoors*

July, 1972



FREE PUBLIC LIBRARY
TRENTON, NEW JERSEY

AUG 8 1972

REFERENCE
DEPARTMENT

Hundreds of thousands enjoy

The Sport of Fishing

By Russell A. Cookingham, *Director*

THE SPORT of fishing affords a recreational outlet for hundreds of thousands of our citizens and can be enjoyed on a year-round basis.

New Jersey provides a wealth of opportunities from fresh water lake and stream fishing to the varied salt water angling opportunities.

Fishing is a sport enjoyed by people of all ages. Equipment requirements are optional depending on the whims of the fisherman—however, very minimal tackle will suffice, especially in the hands of a patient angler.

To utilize this recreational potential, fishermen should be made aware of what is available in New Jersey waters.

In this special fishing issue we are furnishing information, including places, fish species available, and facilities.

Hopefully, this material will enable many more citizens to enjoy the traditional outdoor pastime of fishing. #



State of New Jersey

William T. Cahill
Governor

Department of Environmental Protection

Richard J. Sullivan
Commissioner

Division of Fish, Game, and Shell Fisheries

Russell A. Cookingham
Director

Fish and Game Council

Al Toth, Chairman,
North Brunswick ('72)

Raymond Baker,
Monmouth Jctn. ('73)

John B. Cavagnaro,
Vineland ('75)

E. Anthony Delgado,
Vineland ('74)

George H. Demarest,
Hillsdale ('75)

Randle N. Faunce,
Delanco ('74)

Neal Munch,
Freehold ('75)

Raymond T. Richardson,
Port Monmouth ('72)

Joseph Schollenberger,
Holmdel ('72)

Steven Tczap,
Clifton ('73)

Charles Webber,
Westwood ('73)

Public Relations

William E. Peterman,
Supervisor

Law Enforcement

John C. O'Dowd,
Chief

Wildlife Management

George N. Alpaugh,
Chief of the Bureau

Fisheries Management

Robert A. Hayford,
Chief of the Bureau

New Jersey *Outdoors*

New Jersey *Outdoors* is published monthly by the New Jersey Division of Fish, Game, and Shell Fisheries of the Department of Environmental Protection in the interest of the natural resources of fisheries and wildlife and the betterment of hunting and fishing in New Jersey.

In This Issue

The Sport of Fishing	Inside Front Cover
Places to Fish in New Jersey	2
Fishing License Information	3
Fishing Can Be Pleasant	7
Map of Places to Fish	8
List of Places to Fish	10
Round Valley Reservoir	15
Round Valley Reservoir Map	16
Fishing Pictorial	21
New Record Bluefish	22
State Record Fish	24
Delaware River Boat Access	29
When to Fish	30
Angling Opportunities List	31
Tuckahoe-Corbin City Tract	32

Cover — "Just Fishing" — *Harry Grosch*

Happy is the boy whose wish is to fish and that wish becomes for real, whether it be with a plain old fish pole or fancy rod and reel. For hundreds of thousands of men and women and boys and girls in New Jersey nothing beats fishing for sport and relaxation. To help you find that fishing, this issue features places and times to fish in New Jersey.

Vol. 23, No. 1

July, 1972

Publication Office: Room 702, Labor Building, John
Fitch Way Plaza, Trenton, N. J. 08625

Mailing Address: P. O. Box 1809, Trenton, N. J. 08625

Editor: R. Adams

Second-class postage paid Trenton, N. J. 08608, and additional mailing office.

Subscription: \$3.00 a year, by check or money order, payable to New Jersey *Outdoors*. Cash is forwarded at senders risk. No stamps please.

Change of address: Should be reported directly to the Editor. Send both old and new address. The Post Office will not forward copies unless forwarding postage is provided by subscriber. Copies not delivered through failure to send change of address six weeks in advance cannot be replaced.

All unsolicited material is sent to the magazine at the risk of the sender.

Permission granted to reprint with credit to New Jersey *Outdoors*.

New Jersey State Library



Places to Fish in New Jersey

by Hil Zich, Assistant Fisheries Biologist

Foreword

Much of the enjoyment from fishing comes from finding that particular place that best meets an individual's requirements. Some people like to fish alone while others like to have people near, some fish competitively while others enjoy the opportunity for contemplation, some like lakes or ponds while others like streams, some like to fish for trout while others prefer bass, pickerel, or panfish. To find that place can be a major impasse to realizing the enjoyment of angling. The information provided herein is intended to help you find your particular fishing spot, or, if you wish, to provide you with the gamut of state-controlled public fishing waters so you may employ them as you wish in pursuit of the sport.

The list includes 3,786.8 acres of warm-water lakes and ponds, 9,068.0 acres of two-story lakes where trout as well as warm-water species are available throughout the year, 165.55 miles of warm-water streams and rivers, 59.74 miles of trout streams, 58.35 miles of estuarine coast where salt-water fishes are available, and marinas with access to marine waters for boats. We trust that you will find it helpful.

FISHING LICENSE INFORMATION

(Licenses Expire Annually on December 31st)

Resident Fishing	\$ 6.25
Resident Trout Stamp	2.00
Non-resident and Alien Fishing	10.25
Non-resident Trout Stamp	5.00
Non-resident and Alien 3-day Vacation Fishing	3.75
Resident Family Fishing—Parents	12.25
Supplementary (each child 14-18)	1.25

General

Licenses may be obtained from any county or municipal clerk, designated agent, or registrar of licenses, except Family Fishing Licenses only obtainable from Division office in Trenton.

No license to angle in this state is required of persons under 14 years of age.

Residents afflicted with total blindness and resident citizens upon reaching 70 years of age, may obtain a license to fish only (not to hunt), from office of the Division of Fish, Game, and Shell Fisheries, P. O. Box 1809, Trenton, N. J. 08625, without charge.

Delaware River between N. J. and Pennsylvania

Fishing licenses of either state will be recognized in the Delaware River from water's edge to water's edge and fishermen will be permitted to take off in a boat from either shore and on returning to have in possession any fish which might be legally taken; however, any person fishing from the shore or wading into the river from the shoreline must obtain a license in that state on whose shore fishing is done.

LIST OF TIDAL WATERS

Name of Water	Residents required to be licensed above this location	Non-residents required to be licensed above this location
Atlantic County		
Great Egg Harbor River	Mays Landing Mill Dam	Above mouth of Lakes Creek
Middle River	None—all tide water	Required whole length
Mullica River	Pleasant Mills Dam and/or County Bridge Rt. 542	Parkway Bridge
Nacote Creek	Port Republic Dam	U. S. Rt. 9
Patcong Creek	Bargaintown Lake Dam	Parkway Bridge
Tuckahoe River	April Bogs Dam	Required whole length
Bergen County		
Hackensack River	Oradell Dam	U. S. Highway No. 1 & 9
Hudson River	State line	State line
Passaic River	Dundee Dam at Garfield	U. S. Highway No. 1 & 9

. . . List of Tidal Waters

Name of Water	Residents required to be licensed above this location	Non-residents required to be licensed above this location
Burlington County		
Assisicunk Creek	Suttons Bridge-Old York Rd., Burlington Twp.	Required whole length
Bass River	Fir Bridge on Stage Rd. in Bass River State Forest	Required whole length
Batsto River	Highway Bridge at Rt. 542	Required whole length
Blacks Creek	Columbus-Bordentown Rd. Bridge on Route 206	Required whole length
Crafts Creek	Bustleton-Hedding Rd. Bridge	Required whole length
Crosswicks Creek	Former Damsite at Crosswicks Creek	Required whole length
Delaware River	None—all tide water	Required whole length
Mullica River	West Br.—Pleasant Mills Dam and/or County Bridge Rt. 542	East of Highway Bridge on Rt. 9-4
Pennsauken Creek, No. Br.	P. C. R. R. Crossing Bridge, Moorestown	Required whole length
Pennsauken Creek, So. Br.	Rt. 38 Bridge	Required whole length
Pomeston Creek	Dam on Rt. 130, Cinnaminson Twp.	Required whole length
Rancocas Creek, No. Br.	Mt. Holly Mill Dam	Required whole length
Rancocas Creek, So. Br.	East Br. of So. Br. Vincentown Dam	Required whole length
	West Br. of So. Br. Kirbys Mill Dam	
Swedes Creek	R. R. Bridge Rt. 543	Required whole length
Wading River	On East Br.—Harrisville Dam on Chatswork, New Gretna Rd.	Required whole length
Wading River	On West Br.—At Fork where East and West Brs. Break at Harrisville	Required whole length
Camden County		
Big Timber Creek	Dam at Blackwood Lake	Required whole length
Cooper River	Dam at Kaighn Ave., Camden	Required whole length
Delaware River	None—all tide water	Required whole length
Newton Creek	East of Dam at Audubon; North of Rt. 168 at W. Collingswood and Oaklyn	Required whole length
Pennsauken Creek	Bridge Rt. 38	Required whole length
Cape May County		
Bidwell's Creek	None—all tide water	Required whole length
Cedar Swamp Creek	None—all tide water	Required whole length
Dennis Creek	None—all tide water	Required whole length
East Creek	Drive road along side of Burks Game Preserve	Required whole length
Tuckahoe River	April Bogs Dam	Required whole length
West Creek	West Creek Lake	Required whole length
Cumberland County		
Andrews Creek	None—all tide water	Mouth of creek
Back Creek	None—all tide water	Mouth of creek
Cedar Creek	Cedar Lake, Cedarville	Mouth of creek
Cohansey Creek	Tumbling Dam, Bridgeton	Mouth of creek
Dividing Creek	French Mill	Mouth of creek
E. Menantico Creek	Route 55	Mouth of creek
Fairton Cr.—Tributary of Cohansey	Clarks Lake, Fairton	Mouth of creek

Name of Water	Residents required to be licensed above this location	Non-residents required to be licensed above this location
Fishing Creek Fortescue Cr. Br. of Oranoken Cr. Manumuskin River Maurice River Muskee Creek	Heads in Tide Water Ponds None—all tide water Fries Mills, E. side of Bridge Union Lake, Millville E. side of bridge on Weathersby Rd.	Mouth of creek Mouth of creek Mouth of creek Mouth of creek Mouth of creek
Nantuxent Creek Oranoken Creek Oyster Creek Riggins Creek Sow and Pigs Br. of Nantuxent Stow Creek Straight Creek West Creek	Shaws Lake, Newport Whitecar Mill Heads in Tide Water Ponds Leesburg Prison Farms Heads in Tide Water Ponds Jerrico Bridge Heads in Tide Water Ponds West Creek Lake	Mouth of creek Mouth of creek Mouth of creek Mouth of creek Mouth of creek Mouth of creek Mouth of creek Mouth of creek
Essex County		
Bound Creek Passaic River	None—all tide water Dundee dam at Garfield	Mouth of creek U. S. Rt. 1 and 9
Gloucester County		
Big Timber Creek Delaware River Mantua Creek	Dam at Blackwood Lake None—all tide water Above Wenonah Bridge, Mantua to Wenonah	Required whole length Required whole length Required whole length
Oldmans Creek	Bridge Swedesboro— Sharptown Rd.	Required whole length
Raccoon Creek Woodbury Creek	Second bridge above Swedesboro Above Woodbury	Required whole length Required whole length
Hudson County		
Hackensack River Hudson River Passaic River	None—all tide water None—all tide water None—all tide water	U. S. Rt. 1 and 9 State line U. S. Rt. 1 and 9
Mercer County		
Back Creek Crosswicks Creek	Dam at Gropps Lake Former dam site at Crosswicks Pond	Required whole length Required whole length
Delaware River Doctors Creek	Calhoun St. Bridge, Trenton Site of Groveville Dam	Required whole length Required whole length
Middlesex County		
Cheesequake Creek Raritan River	Dam Cheesequake Lake 5-mile Dam between New Brunswick & Bound Brook Dam at Duhernal Lake	Jetty light mouth of creek Victory Highway Bridge Rt. 35 Required whole length
South River		
Monmouth County		
Manasquan River Matawan Creek Shark River Shrewsbury River	Allenwood Bridge Lefferts Lake Dam Remsen Mills Road Tinton Falls Rd. Bridge. Swim- ming River Dam (Lincroft). No fresh water above Oceanport, Branchport, Long Branch Ocean Road	Allenwood Bridge Rt. 35 Bridge Remsen Mills Road No. Long Branch, Ocean- port, Little Silver Bridges and Rt. 35 on Navesink Ocean Road
Wreck Pond		
Ocean County		
Beaver Dam Creek Cedar Creek Cedar Run	Route 88 Route 9 Route 9	Drawbridge on Beaver Dam Rd. U. S. Rt. 9 Bridge Navigation Light in Mouth

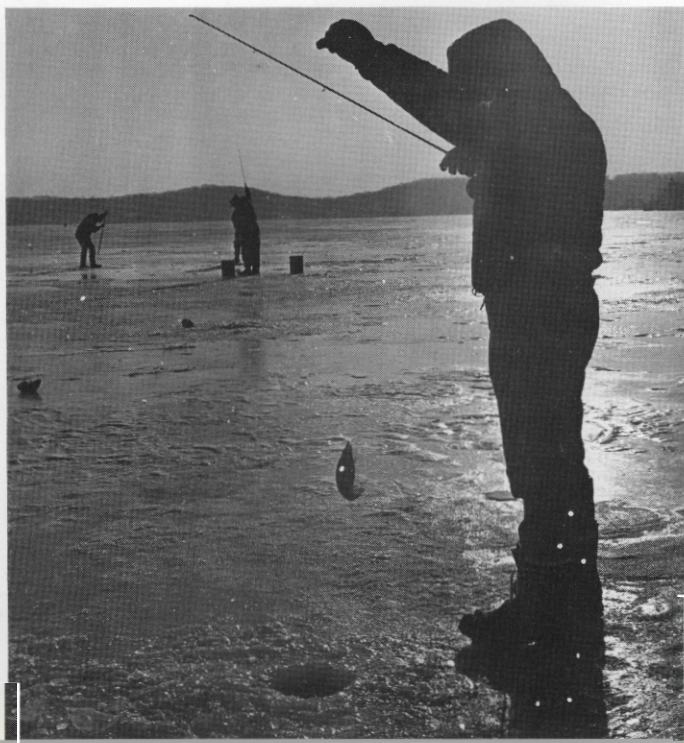
. . . List of Tidal Waters

Name of Water	Residents required to be licensed above this location	Non-residents required to be licensed above this location
Dinner Point Creek	None—all tide water	Required whole length
Double Creek	None—all tide water	Bay Ave. Bridge
Forked River	All branches, Route 9	All branches, Route 9
Gunning River	None—all tide water	Required whole length
Jakes Branch	Above Atlantic City Blvd.	Above Atlantic City Blvd.
Kettle Creek	Route 549	Shore Acres Yacht Club on North. North Point Green Island on South Mallard Island Bridge Rt. 70 Bridge
Manahawkin Creek	None—all tide water	Required whole length
Metedeconk River	Rt. 70 Bridge	Required whole length
Mill Creek	Pine Beach—Ocean Gate Rd.	Required whole length
Mill Creek	Dam at Manahawkin Lake	Required whole length
Oyster Creek	Route 9	Required whole length
Parkers Run	None—all tide water	Public Dock
Potters Creek	None—all tide water	Route 13
Stouts Creek	None—all tide water	Required whole length
Toms River	So. Main St. Bridge	So. Mian St. Bridge
Tuckerton Creek	Dam Route 9	Tuckerton Yacht Club
Waretown Creek	Route 9	Cottrell Clam House
West Creek	Route 9	West Creek Yacht Club
Passaic County		
Passaic River	Dundee Dam at Garfield	Required whole length
Salem County		
Alloway Creek	None: tide water to Alloway Gate Hole	Required whole length
Black Ditch	None; tide water to head	Required whole length
Delaware River	None—all tide water	Hope Creek
Fishing Creek	None; tide water to head	Required whole length
Hope Creek	None; tide water to head	Required whole length
Mad Horse Creek	None; tide water to head	Required whole length
Mill Creek	None; tide water to head	Required whole length
Oldmans Creek	Bridge, Swedesboro—Sharptown Rd.	Required whole length
Salem Creek	None; tide water to dam	Required whole length
Stow Creek	Jerico Bridge	Required whole length
Straight Ditch	None; tide water to head	Required whole length
Union County		
Bound Creek	None—all tide water	100 ft. w. of entrance into Newark Bay
Dutch Creek	None—all tide water	100 ft. w. of entrance into Newark Bay
Elizabeth River	West Grand St., Elizabeth	E. of Front St. Bridge, Elizabeth
Morses Creek	Old Morses Mill Rd.	E. of So. Front St. Bridge, Elizabeth
Oyster Creek	None—all tide water	100 ft. w. of entrance into Newark Bay
Piles Creek	None—all tide water	E. of Sound Shore branch of Central R. R. bridge, Linden
Rahway River	Grand St. Bridge, Rahway	E. of Sound Shore branch of Central R. R. bridge, Linden

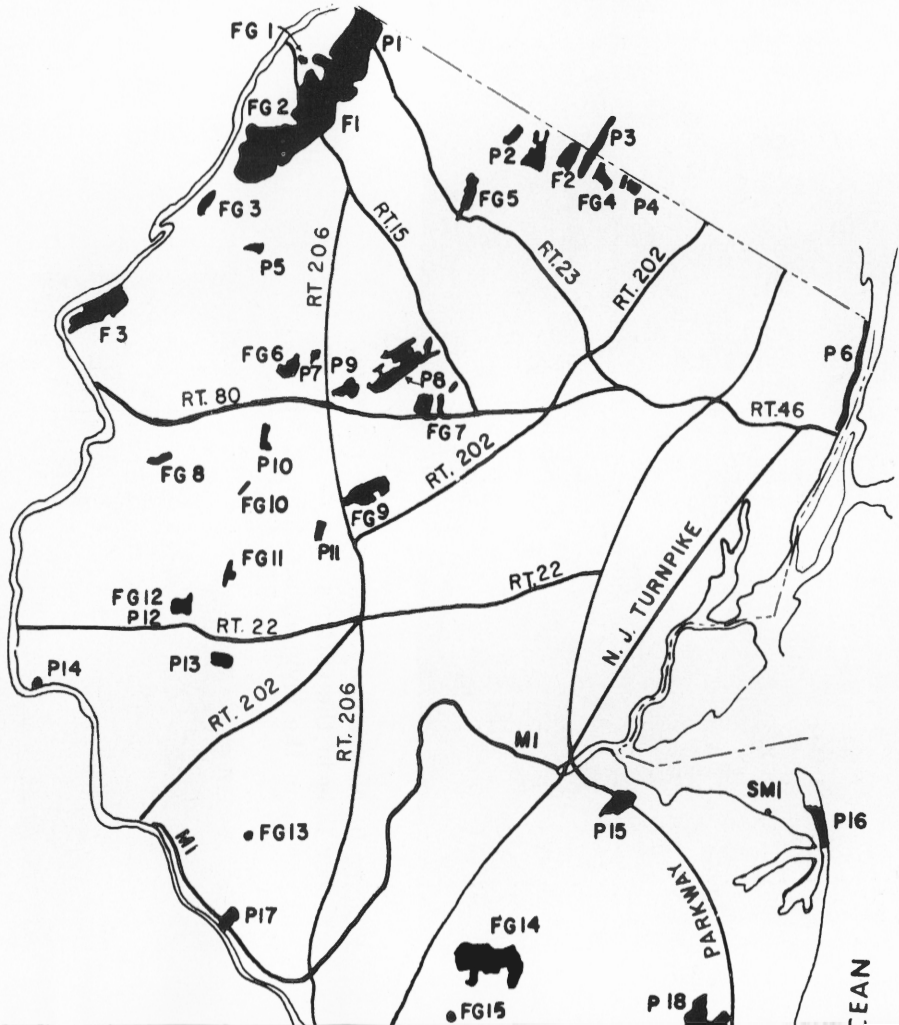
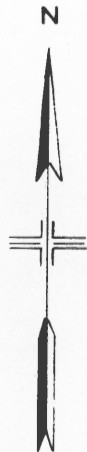
NOTE: This is not the full law. Consult your conservation officer or the office of the Division for further details if not covered herein.

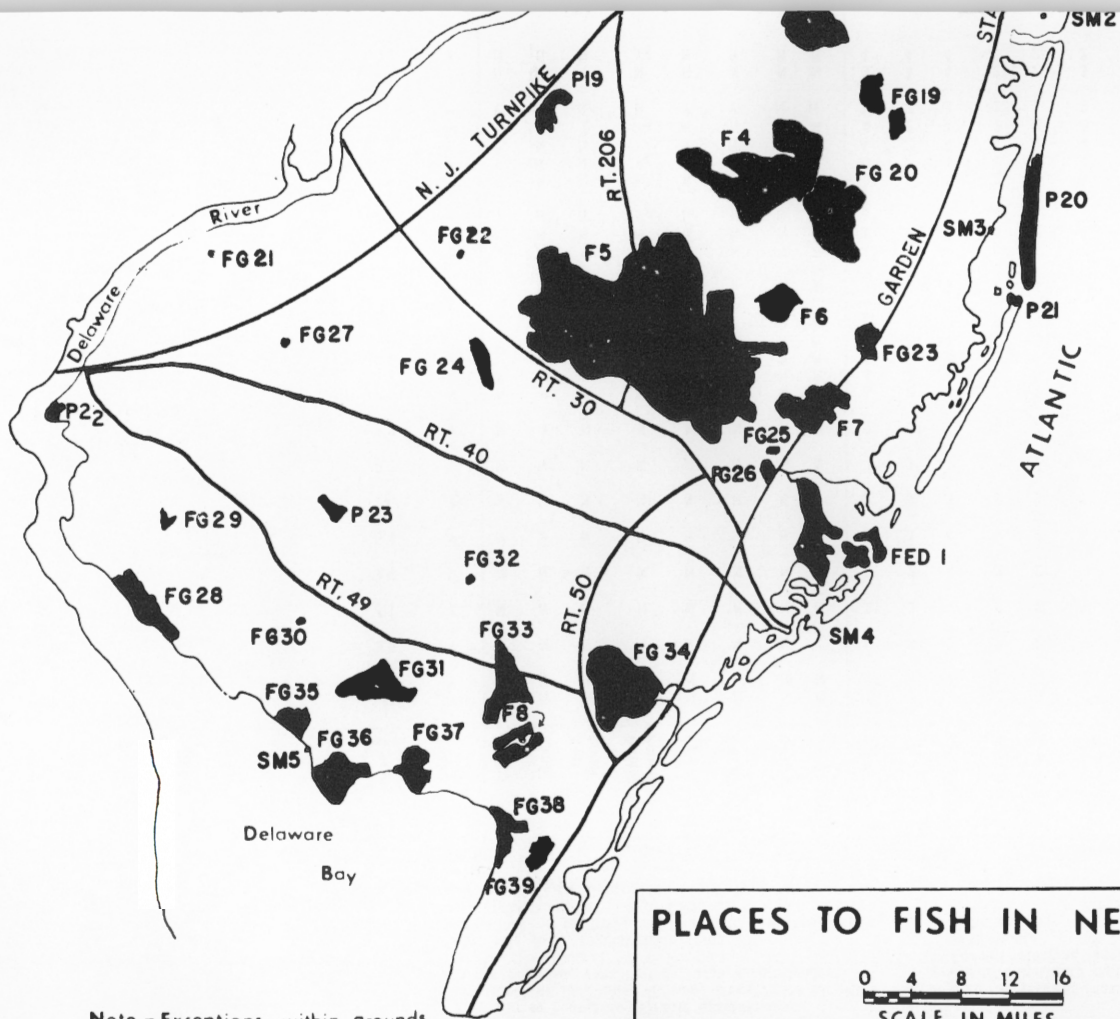


Fishing in New Jersey can be most pleasant, whether it is in the soft warmth of spring or summer or in the invigorating chill of winter.



*Photographs by
Harry Grosch*





Note - Exceptions within grounds not shown.

PLACES TO FISH IN NEW JERSEY



Fish & Game Water or Access Points (FG)	Surface Acreage or Mileage	Bank Fishing	FACILITIES									FISH SPECIES											
			Boat Launch b/		Boat Livery	Outboards Permitted	Bathing	Picnicking a/ a/	Cabins	Campsites	Trout	LM Bass	SM Bass	Pickerel	Catfish	Yellow Perch	White Perch	Suckers	Carp	Sunfish	Tidal Species	Saltwater Species	
			Cartop	Ramp																			
FG18 Collier's Mill F. & W. Mgt. Area																							
Collier's Mill Pond	17	Y	Y	N	N	Yg	N	Y	N	Y	4	2	4	2	2	4	2	4	1				
Turn Mill Pond	100	Y	Y	Y	N	Yg	N	Y	N	Y	4	2	4	2	2	4	2	4	2				
Upper Shannoc Pond	7	Y	Y	N	N	Yg	N	N	N	N	4	4	4	1	2	4	4	4	3				
Lower Shannoc Pond	8	Y	Y	N	N	Yg	N	N	N	N	4	4	4	2	2	4	4	4	3				
Success Lake	40	Y	Y	N	N	Yg	N	N	N	N	4	4	4	2	2	4	4	4	2				
Kennedy Pond	11	Y	Y	N	N	Yg	N	N	N	N	4	4	4	2	3	4	4	4	3				
FG19 Whiting F. & W. Mgt. Area																							
Bauer Pond	10	Y	N	N	N	Yg	N	N	N	Ye/	4	4	4	2	4	4	4	4	3				
FG20 Greenwood Forest F. & W. Mgt. Area																							
Howardsville Imps. (3)	30	Y	N	N	N	Yg	N	N	N	Y	4	4	4	2	2	2	4	4	3				
FG21 Logan Pond	3.5	Y	N	N	N	Yg	N	N	N	N	4	2	4	2	2	2	4	4	2				
FG22 Rowands Pond	5	Y	Y	N	N	Yg	N	N	N	N	3*	2	4	2	2	2	3	3	2				
FG23 Stafford Forge F. & W. Mgt. Area																							
Reservoir	68	Y	Y	N	N	Yg	N	N	N	N	4	4	4	2	2	4	4	4	3				
Pond #1	48	Y	Y	N	N	Yg	N	N	N	N	4	4	4	1	1	4	4	4	3				
Pond #2	22	Y	Y	N	N	Yg	N	N	N	N	4	4	4	1	1	4	4	4	3				
Main Lake	73	Y	Y	N	N	Yg	N	N	N	N	4	4	4	1	1	4	4	4	3				
Goose Pond	3	Y	Y	N	N	Yg	N	N	N	N	4	4	4	2	2	4	4	4	3				
FG24 Winslow F. & W. Mgt. Area																							
Great Egg Harbor River	4.6	Y	Y	N	N	Y	N	N	N	N	4	4	4	2	2	4	3	2	2				
Cedar Pond	11	Y	Y	N	N	Yg	N	N	N	N	4	2	4	4	4	4	4	2	1				
Oak Pond	12	Y	Y	N	N	Yg	N	N	N	N	4	2	4	4	4	4	4	4	1				
FG25 Swan Bay F. & W. Mgt. Area																							
Mullica River & Turtle Creek	3.5	Y	Y	N	N	Y	N	N	N	N						1						Y	
FG26 Port Republic F. & W. Mgt. Area																							
Mullica River	2.1	Y	N	N	N	Y	N	N	N	N						1						Y	
FG27 Harrisonville Lake	30	Y	Y	Y	N	Yg	N	N	N	N	3*	1	4	2	2	2	2	2	1			1	
FG28 Mad Horse F. & W. Mgt. Area																							
Malportis & Mad Horse Creeks	3.0	Y	Y	Y	N	Y	N	N	N	N						1						Y	
Delaware Bay	5.8	Y	N	N	N	Yg	N	N	N	N												Y	
FG29 Maskells Mills Lake	20	Y	N	N	N	Yg	N	N	N	N	4	2	4	2	2	2	2	3	2			1	
FG30 Clarks Pond	43	Y	Y	N	N	Yg	N	N	N	N	4	2	4	2	2	2	2	2	2			2	
FG31 Millville F. & W. Mgt. Area																							
Buckshutem Creek & Tribs.	6.0	Y	N	N	N	N	N	N	N	N	4	3	4	2	2	2	4	2	3			2	
Shaws Mill Pond	30	Y	Y	N	N	Yg	N	N	N	N	3*	2	4	2	2	4	4	2	2			2	
FG32 Menantico Sand Ponds	62	Y	Y	N	N	Yg	N	N	N	N	4	2	4	2	2	2	2	2	2			2	
FG33 Peaslee F. & W. Mgt. Area																							
Tuckahoe River	7.0	Y	N	N	N	N	N	N	N	N	4	4	4	2	2	2	2	2	4			3	
April Bogs (3)	3	Y	Y	N	N	Yg	N	N	N	N	4	4	4	2	2	3	3	4	2			2	
FG34 Tuckahoe-Corbin City																							
Tuckahoe River	6.0	Y	Y	Y	N	Y	N	N	N	N	4	4	4	2	2	2	1	2	4			3	Y
Tuckahoe Lake	10	Y	Y	N	N	Yg	N	N	N	N	4	2	4	3	2	3	3	4	2			2	Y
Atlantic Cty. Imp. #1	104	Y	Y	N	N	Yg	N	N	N	N	4	4	4	2	2	2	2	4	2			2	Y
#2	243	Y	Y	N	N	Yg	N	N	N	N	4	4	4	2	2	2	2	4	2			2	Y
#3	284	Y	Y	N	N	Yg	N	N	N	N	4	4	4	2	2	2	2	4	2			2	Y
Cape May Cty. Imp. #1	42	Y	Y	N	N	Yg	N	N	N	N	4	3	4	3	2	3	3	4	2			2	Y
#2	220	Y	Y	N	N	Yg	N	N	N	N	4	1	4	4	1	3	3	4	1			1	Y
#3	75	Y	Y	N	N	Yg	N	N	N	N	4	4	4	3	2	1	1	4	3			3	Y

Fish & Game Water or Access Points (FG)	Surface Acreage or Mileage	Bank Fishing	FACILITIES								FISH SPECIES											
			Boat Launch b/ Cartop		Ramp	Boat Livery	Outboards Permitted	Bathing	Picnicking a/ a/	Cabins	Campsites	Trout	LM Bass	SM Bass	Pickrel	Catfish	Yellow Perch	White Perch	Suckers	Carp	Sunfish	Tidal Species
FG35 Fortescue F. & W. Mgt. Area Delaware Bay	3.0	Y	Z	Z	Z	Y	N	N	N	N						1					Y	Y
FG36 Egg Is.—BerryTown F. & W. Mgt. Area Delaware Bay	9.0	Y	Z	Z	Z	Y	N	N	N	N						1					Y	Y
FG37 Heislerville F. & W. Mgt. Area Maurice River	2.9	Y	Y	Z	Z	Y	N	N	N	N	4	4	4	4	2	4	2	4	1	4	Y	Y
Cumberland Cty. Imp. #1	68	Y	Y	N	N	Yg	N	N	N	N	4	4	4	4	2	4	2	4	1	4	Y	Y
#2	61	Y	Y	N	N	Yg	N	N	N	N	4	4	4	4	2	4	2	4	1	4	Y	Y
#3	113	Y	Y	N	N	Yg	N	N	N	N	4	4	4	4	2	4	2	4	1	4	Y	Y
FG38 Dennis Ck. F. & W. Mgt. Area Dennis Creek & Tribs.	5.5	Y	Y	Y	N	Y	N	N	N	N						1					Y	
Delaware Bay	3.0	Y	N	N	N	Y	N	N	N	N												Y
FG39 Beaver Swamp F. & W. Mgt. Area Clint Mill Pond	6	Y	N	N	N	Yg	N	N	N	N	4	4	4	2	2	3	3	4	4	2		

State Park Water or Access Point (P)	Impoundments Surface (Acres) Stream or Ocean (Miles)	Bank Fishing	FACILITIES								FISH SPECIES											
			Boat Launch b/ Cartop		Ramp	Boat Livery	Outboards Permitted	Bathing	Picnicking a/ a/	Cabins	Campsites	Trout	LM Bass	SM Bass	Pickrel	Catfish	Yellow Perch	White Perch	Suckers	Carp	Sunfish	Tidal Species
P 1 High Point Big Flat Brook	3.0	Y	N	N	N	N	N	N	N	N	2*	3	3	3	3	3	4	2	4	2		
Lake Marcia	19	Y	N	N	N	N	Y	Y	N	N	4	3	3	4	2	2	3	4	4	4	2	
Steenykill Lake	30	Y	Y	N	N	Yg	N	N	Y	N	4	3	2	4	2	4	4	4	4	4	2	
Saw Mill Lake	20	Y	Y	N	N	Yg	Yi/	N	N	Y	3*	2	4	4	3	4	4	4	4	4	2	
P 2 Wawayanda Wawayanda Creek	2.0	Y	N	N	N	N	N	N	N	N	2	4	4	4	3	4	4	2	4	3		
Wawayanda Lake	255	Y	Y	N	Y	Yg	N	N	N	Y	2*	2	3	2	2	2	3	2	4	2		
Laurel Pond	5	Y	N	N	N	N	N	N	N	N	4	2	4	3	2	3	3	3	4	2		
P 3 Greenwood Lake	1920	Y	Z	Z	Z	Y	Z	Z	Z	N	2*	1	2	1	1	2	2	3	4	1		
P 4 Ringwood Ringwood River	1.0	Y	N	N	N	N	N	Y	N	N	3*	3	4	2	2	3	3	1	4	2		
Wanaque River	3.4	Y	N	N	N	N	N	N	N	N	2*	2	4	2	2	3	3	1	3	1		
Shepherd Lake	74	Y	Y	Y	Y	Yg	Y	Y	N	N	3*	2	4	2	2	2	3	3	4	2		
Bear Swamp Pond e/	56	Y	N	N	N	Yg	N	N	N	N	4	2	4	2	2	3	3	4	4	2		
Green Turtle Pond	40	Y	Y	N	N	Yg	N	N	N	N	4	2	4	4	2	2	3	4	4	2		
Sallys Pond	11	Y	N	N	N	N	N	N	N	N	4	2	3	3	2	3	3	2	4	2		
Mill Pond	1	Y	N	N	N	N	N	Y	N	N	4	2	3	3	2	3	3	3	4	2		
Glasmere Ponds (3)	2.5	Y	N	N	N	N	N	N	N	N	4	3	2	2	2	2	3	4	4	1		
Gatun Pond	1	Y	N	N	N	N	N	N	N	N	4	4	2	3	1	2	3	4	4	1		
Brushwood Pond e/	4.0	Y	Y	N	N	N	N	N	N	N	4	4	2	3	1	2	3	4	4	1		
Weyble Pond e/	4.0	Y	Y	N	N	N	N	N	N	N	4	4	2	2	1	2	3	4	4	1		

State Park Water or Access Point (P)	Impoundments Surface (Acres) Stream or Ocean (Miles)	Bank Fishing	FACILITIES								FISH SPECIES												
			Boat Launch b/	Cartop	Ramp	Boat Livery	Outboards Permitted	Bathing	Picnicking a/	Cabins	Campsites	Trout	LM Bass	SM Bass	Pickereel	Catfish	Yellow Perch	White Perch	Suckers	Carp	Sunfish	Tidal Species	Saltwater Species
P 5 Swartswood	Big Swartswood Lake	494	Y	Y	Y	Y	Yg	Y	Y	N	Y	2*	2	2	2	2	2	2	3	1			
	Little Swartswood Lake	75	Y	Y	N	N	Yg	N	N	N	N	4	2	3	2	2	2	4	4	1			
	Spring Lake	11	Y	N	N	N	N	N	N	N	N	4	2	4	3	2	3	3	2	2			
P 6 Palisades Interstate	Hudson River	10.0	Y	Y	Y	N	Y	N	Y	N	N											Y	
		179	Y	Y	Z	Z	Y	N	N	N	N	3*	2	3	2	1	2	1	2	4	1		
P 7 Cranberry Lake		2685	Y	Z	Z	Z	Y	Y	Y	Z	N	2*	2	3	1	1	1	1	2	3	1		
P 8 Lake Hopatcong		329	Y	Y	Z	Z	Y	N	N	N	N	3*	1	3	1	2	1	1	2	3	1		
P 10 Stevens-Saxton Falls	Saxton Falls Lake	60	Y	Y	N	Z	Yg	N	Z	N	N	2*	2	3	2	2	1	2	1	4	1		
	Musconetcong River	0.75	Y	N	N	N	N	Y	Y	N	Y	2*	3	3	3	3	3	1	4	1			
P 11 Hacklebarney	Black River	0.66	Y	N	N	N	N	N	Y	N	N	2*	3	3	3	3	3	2	4	2			
	Trout Brook	0.33	Y	N	N	N	N	N	Y	N	N	2	4	4	4	4	4	3	4	3			
	Rhinehart Brook	0.25	Y	N	N	N	N	N	Y	N	N	2	4	4	4	4	4	3	4	3			
		1290	Y	Y	Y	N	Yf	Y	N	N	N	1	1	3	3	1	3	3	1	4	1		
P 12 Spruce Run Reservoir		2350	Y	Y	Y	N	Yf	Yi/	N	N	Y	1	2	1	4	1	3	2	3	4	1		
P 13 Round Valley Reservoir																							
P 14 Bulls Island	Delaware River	0.8	Y	Y	Y	N	Y	N	Y	N	Y	3	2	3	3	1	2	3	1	1	2		
	Delaware-Raritan Canal	1.25	Y	Y	N	N	N	N	N	N	Y	3*	2	3	3	1	2	3	1	1	2		
P 15 Cheesecake	Cheesecake Creek	0.75	Y	N	N	N	Y	N	N	N	N											Y	
	Hooks Creek Lake	10	Y	N	N	N	N	Y	Y	N	Y	4	4	4	4	4	4	1	4	4	4		
P 16 Sandy Hook e/	Sandy Hook Bay	0.75	Y	Z	Z	Z	Y	N	N	N	N											Y	
	Atlantic Ocean	1.5	Y	Z	Z	Z	Y	Y	Y	N	N											Y	
P 17 Washington Crossing	Delaware River	0.5	Y	Y	N	N	Y	N	Y	N	N	4	2	4	3	1	2	3	1	2	1		
	Delaware-Raritan Canal	0.5	Y	Y	N	Z	N	N	Y	N	N	3*	2	3	2	1	2c	3	1	2	1		
P 18 Allaire	Manasquan River	1.0	Y	N	N	N	N	N	Y	N	Y	2*	3	4	4	3	3	1	4	3			
	Mingamahone Brook	0.25	Y	N	N	N	N	N	N	N	N	2*	4	4	4	4	4	4	1	4	3		
P 19 Rancocas	Rancocas Creek Branches	3.5	Y	Y	N	N	Y	N	N	N	N	4	3	4	2	1	3	2	2	2	2		
P 20 Island Beach e/	Atlantic Ocean	9.5	Y	Z	Z	Z	Y	Y	Y	N	N											Y	
P 21 Barnegat Light e/	Inlet & Atlantic Ocean	0.5	Y	Z	Z	Z	Y	Y	Y	N	N											Y	
P 22 Fort Mott	Delaware River	0.45	Y	N	N	N	Y	N	Y	N	N											Y	
P 23 Parvin	Muddy Run	1.4	Y	Y	N	N	Yg	N	N	N	N	4	2	4	2	2	2	2	2	2	2		
	Parvin Lake	95	Y	Y	N	Y	Yg	Y	Y	N	Y	4	2	4	2	1	2	2	2	2	1		
	Thundergust Lake	14	Y	Y	N	N	Yg	N	Y	Y	N	4	2	4	4	2	3	4	4	4	1		

Round Valley Reservoir

Hunterdon County

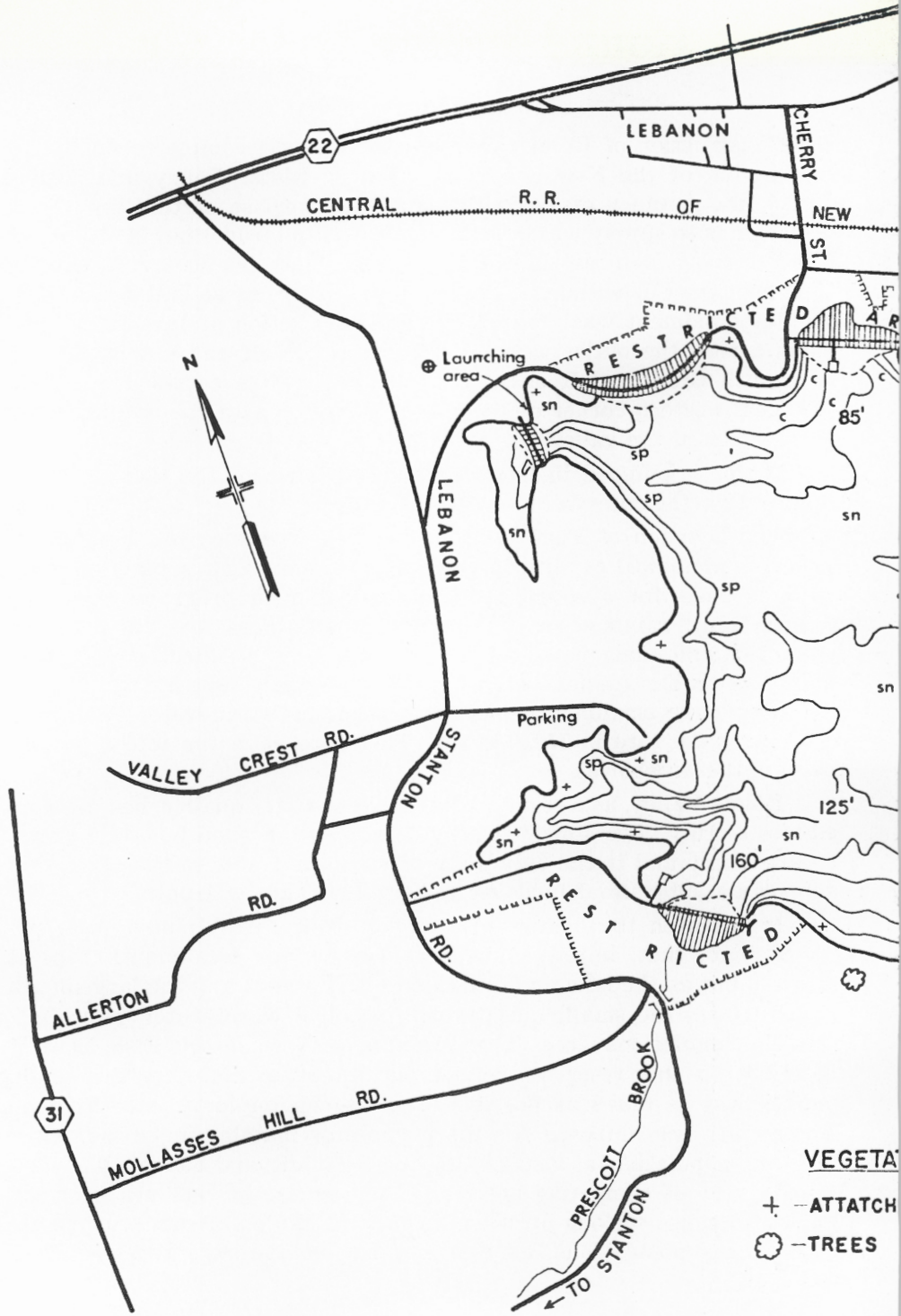
Construction of Round Valley Reservoir was completed under the supervision of the New Jersey Division of Water Policy and Supply during the summer of 1965. The principal purpose of this off-stream reservoir is to supply water for northeastern metropolitan New Jersey. The reservoir is in an elliptically-shaped, bowl-like valley formed in the top of the Cushetunk Mountain by a ridge of coarse-grained diabase. The impoundment was created by the construction of two earth-filled dams across the outlet valleys of Prescott Brook and a tributary to the South Branch of Rockaway Creek, and a dike across a saddle in the northwestern corner of the ridge. Together with the natural ridge these enclosed the valley.

Water is pumped in from the South Branch of the Raritan River to maintain the reservoir's level.

The Division of Fish, Game, and Shell Fisheries has been monitoring limnological conditions and the developing fish population since 1965 as basis for a sound fisheries management program. Presently brown trout, rainbow trout, and smallmouth bass are the principal game fish and management objectives have been oriented toward these highly desirable species. Standing waters which support trout year-round or have smallmouth bass as the major warm-water game fish are extremely rare in New Jersey. Therefore, it is the intent to perpetuate these fisheries.

Round Valley, as a result of its excellent water quality, has developed into a truly "two-story" fishery. It supports a good holdover brown trout fishery and is the only body of standing water in the state that supports a substantial holdover fishery for rainbow trout.

It has been the history of many of New Jersey's man-made impoundments that, initially, a superb fishery for smallmouth bass is created, but as the lake matures this fishery wanes and the largemouth bass replaces the smallmouth as the principal warm-water game fish. Current regulations (see "Compendium of New Jersey Fish Laws") in effect on this reservoir reflect our intent to maintain the smallmouth bass as much as possible. The 13-inch minimum size limit on smallmouth was imposed for the purpose of maintaining a maximum breeding population, as well as allowing for additional biological control (predation) of competing species. Also, because largemouth bass are known to cause serious problems insofar as the maintenance of smallmouth bass populations, all size and bag limits were removed from this species.



VEGETA

- + --ATTACH
- --TREES

⊕ Use of launching area mayb

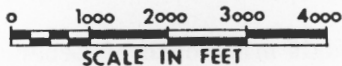
**ROUND VALLEY RESERVOIR
RARITAN RIVER DRAINAGE
HUNTERDON COUNTY**

2,350 ACRES

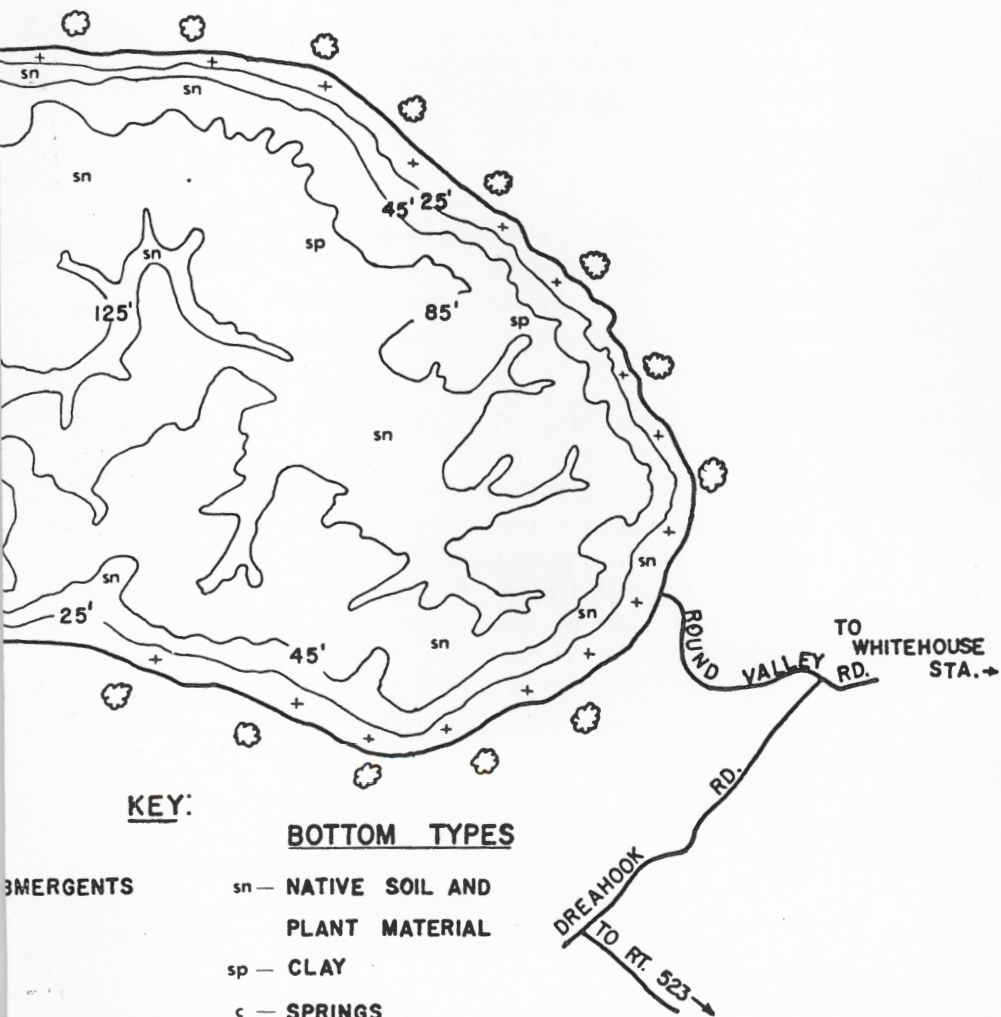
AVERAGE DEPTH 71'

ELEVATION 385'

MAXIMUM DEPTH 160'



NEW JERSEY



EMERGENTS

(rarely disrupted during construction of a permanent facility signs for alternate launch area.)

. . . Round Valley Reservoir

Plans call for the development of more sophisticated recreational facilities, which would include parking areas, boat launching sites, and the like, that are of particular interest to anglers, but thus far only rudimentary provisions have been made to accommodate most angling needs.

Location:

Approximately one-half mile south of Lebanon.

Chemical Features:

Oxygen: Sufficient for fish throughout at all times of year.

pH: Alkaline.

Temperature: Thermocline exists at 22-foot to 35-foot depth during late June through mid-September in most years.

Surface maximum: 80°F.

Hypolimnion maximum: 55°F.

Biological Features:

Vegetation: Dense masses of submerged aquatic vegetation along much of the shoreline to 20-foot depth.

Water Color: Clear, except during summer months when a green tint develops due to phytoplankton production.

Fish and Fishing:

Brown trout: Excellent - May through June. Large holdover browns up to 8 pounds are taken by fishing the thermocline during the otherwise difficult fishing months of July and August.

Rainbow trout: Excellent - A year-round fishery. Growth is excellent with many holdovers of 3 pounds and better being taken annually. The state record rainbow, 8 pounds, 5½ ounces was taken here in September 1970. Fish are taken by fishing the thermocline during July and August. Many large trout are taken by shore anglers in the fall and winter.

Smallmouth bass: Excellent - The best fishing occurs during late April through mid-May, with a secondary peak occurring in mid-June to late August. Growth is outstanding with fish reaching legal size (13 inches) during their third summer.

Largemouth bass: Very limited population. However, reproduction checks indicate that this species is gradually increasing in the reservoir and as such angling opportunity should increase. Growth rate is well above the state average.

Black crappie: Limited population. Growth is excellent with a fair number of fish in excess of one pound available.

Sunfish: Excellent population, with an above average rate of growth.

Brown bullhead: Excellent population, with an above average growth rate.

White perch: Abundant and growing well, but seldom taken. Fishing techniques generally inadequate.

The 28 species of fish present are as follows:

Brook trout	Creek chub
Brown trout	Fallfish
Rainbow trout	Common shiner
Smallmouth bass	Golden shiner
Largemouth bass	Spottail shiner
Black crappie	Satinfin shiner
Rock bass	Fathead minnow
Bluegill	E. silvery minnow
Pumpkinseed	Blacknose dace
Redbreast sunfish	Johnny darter
White perch	Banded killifish
Brown bullhead	Alewife
White sucker	American eel
E. creek chubsucker	Sea lamprey

Robert W. Stewart and Robert H. Soldwedel,
Bureau of Fisheries Management

**You may use the subscription form below to subscribe, renew,
or order a gift subscription to New Jersey Outdoors**

To: New Jersey Outdoors, P. O. Box 1809, Trenton, N. J. 08625

Please send a subscription (at \$3.00 per year) for 1 year 2 years
 3 years for \$8.00 new renewal

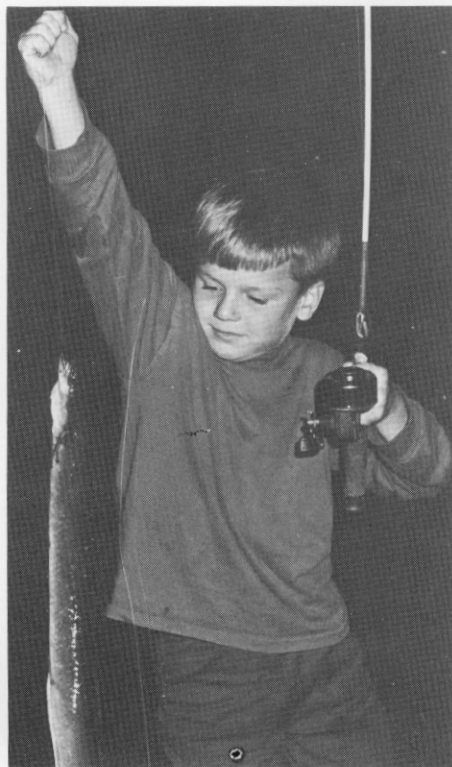
Name

Street

Post Office State Zip Code

From





Fishing in New Jersey can be classic fly angling for the princely trout (upper opposite) or just plain fishing (lower opposite) for whatever finny critter drifts by to take the bait. Garden State fishing also includes a vast variety of some of the best salt water fishing in the world (upper right). And, the lucky angler (left) can never be sure what will be next.

—Harry Grosch

New Record Bluefish

By Robert A. Gianni

Frank Hurly and I finally went blue fishing after a full week of waiting for a day that was without rain and winds blowing less than 15 mph.

We left Cape Island Marina East approximately 7:15 a.m. on Friday the 29th of October 1971. We cleared the Cape May jetties at approximately 8:00 a.m. The weather was very foggy with approximately 50 feet visibility. We ran completely by compass and radar.

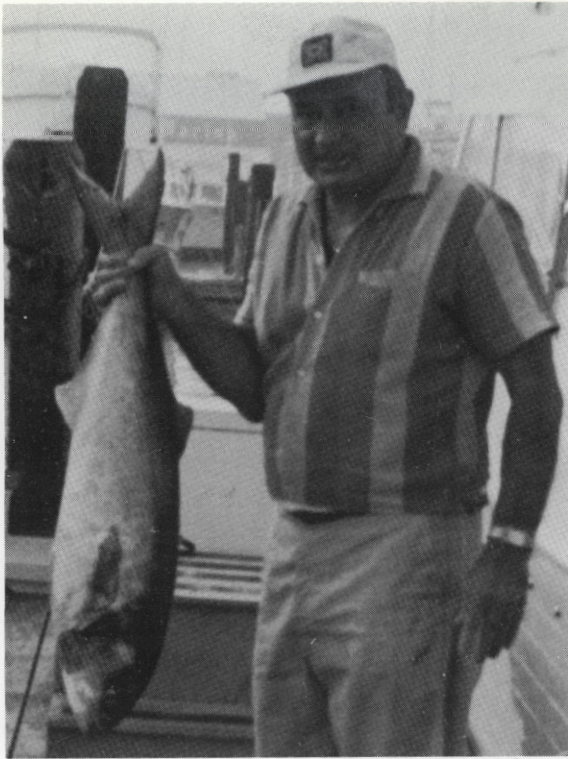
My boat the Bob-Jim II is a 37-foot Post, 1968, completely outfitted with radar, loran, radio 150W S.T.S., and depth recorder to 100 fathoms plus fishing equipment.

We ran a course of 110° for approximately one hour at slow speed because of no visibility. We arrived at the 5 Fathom Bank Buoy at approximately 9:15 a.m. Frank was at the helm and slowed the boat down to trolling speed. I began to put the lines over, trolling a feather, a red hotchie, and rigged bait that was left over from Marlin fishing. The rigged bait went on the outlookers, one squid, and one bally. We were not trolling for long when Frank yelled Port outrigger. I quickly got the rod out of the socket and the fish

was on. I had set the outrigger lines way back away from the boat, so we could not really see the fish. But, we knew it was a good size fish by the way the pole was bending and the way he was taking line as the drags had been set for smaller fish. Frank slowed the boat down but did not stop. I finally brought the fish to the boat after 15 minutes. Frank left the wheel and came off the bridge and gaffed the fish. After the fish was in the boat we both realized we had caught a very large blue fish. We could not weigh it as my scale had broken the week before.

We continued to fish taking turns driving the boat and catching fish. At times we had two fish on, and even three or four fish. We idled the boat down and let it run itself. There was no danger of hitting any other boat as we were the only boat out in the dense fog. The fish hit all on squid and bally. So I changed over all lines to the bait.

The fog began to lift a little in the early afternoon and we could see we were all by ourselves. By 2:15 p.m. we had caught 20 blue fish. A few at 12 pounds, but most fish 15 to 20 pounds and the one big one which was the first fish



The new state record bluefish taken by Robert A. Gianni south east of Cape May last October. The big blue weighed 23 pounds and 4 ounces and measured 36 inches in length

caught. We set compass course for the Cape May Inlet and arrived at the gas dock of the Marina at 3:30 p.m. I proceeded to get gas while Frank was having the fish weighed in by the official weight master of the dock. He yelled that the big blue weighed 23 pounds, 4 ounces and the other fish at 20 pounds on down to 12 pounds. Most fish weighed between 15 and 20 pounds.

While Frank was weighing the fish in the boat salesmen from the Marina and also the other people that were there were surprised at the big blues and remarked that they were the biggest blue fish they had ever seen.

Dale Small, Operation Manager of the Marina, being a fisherman himself could not get over the size of the big blue and said it was the biggest blue fish he had ever seen. Needless to say it is also the biggest blue I ever saw. The boat mechanics from the Marina also saw the fish and they all said, "We are all going blue fishing tomorrow."

Frank and I had a wonderful day of fishing. Our only regret being we could not go again Saturday, the next day. I hope that some day I will run into the big slammer blue fish again. #

State Record Fish

Since the last published listing of the New Jersey state record fresh water fish, a new category for fresh water American shad has been added. An account of the details and the catching of the record shad appeared in the April issue. In addition, a new record for bluefish has been recognized and the story about the catch is presented on page 22 of this issue.

New Jersey State All-tackle Records

Fresh Water

Species	Angler	Year	Weight lbs. oz.	Where Caught
Brook Trout <i>Salvelinus fontinalis</i>	George J. Hornung	1956	6 8	Lake Hopatcong
Brown Trout <i>Salmo trutta</i>	Howard Devore	1964	16 11	Greenwood Lake
Rainbow Trout <i>Salmo gairdneri</i>	Richard Ruis, Sr.	1970	8 5½	Round Valley Res.
Salmon (landlocked) <i>Salmo salar</i>	John A. Mount	1951	8 0	New Wawayanda Lake
Smallmouth Bass <i>Micropterus dolomieu</i>	Earl H. Trumpore	1957	6 4	Delaware River
Largemouth Bass <i>Micropterus salmoides</i>	Logan B. Whitesell	1960	10 12	Mt. Kimble Lake
Chain Pickerel <i>Esox niger</i>	Frank McGovern	1957	9 3	Lower Aetna Lake
Calico Bass <i>Pomoxis nigromaculatus</i>	William Hanna	1961	3 5½	Alloway Lake
Rock Bass <i>Ambloplites rupestris</i>	Harold Webb	1968	1 2¼	Lake Hopatcong
Channel Catfish <i>Ictalurus punctatus</i>	William Otten	1918	28 0	Greenwood Lake
White Perch <i>Morone americana</i>	Robert Huber	1950	2 8	Lake Hopatcong
Yellow Perch <i>Perca flavescens</i>	Dr. C. C. Abbot	1865	4 3½	Bordentown
Bluegill <i>Lepomis macrochirus</i>	Silas Matthew, Jr.	1956	2 0	Farm Pond, Wantage Twp.
Walleyed Pike <i>Stizostedion vitreum</i>	Stanley Norman	1934	12 12¾	Delaware River
Striped Bass (landlocked) <i>Morone saxatilis</i>	Mrs. Albert Beebe	1952	23 8	Union Lake
Brown Bullhead <i>Ictalurus nebulosus</i>	Robert Dorf	1966	22 15	Spring Lake
Northern Pike <i>Esox lucius</i>	Edward Kistner	1971	21 0	Lake Wawayanda
Muskellunge <i>Esox masquinongy</i>	John Fleming	1970	19 0	Delaware River
American Shad <i>Alosa sapidissima</i>	Richard Lepes	1971	7 13½	Delaware River

New Jersey State All-tackle Records

Salt Water

Species	Angler	Year	Weight lbs. oz.	Where Caught, or out of
Albacore <i>Thunnus alalunga</i>	Walter Citimm	1961	69 1	Hudson Canyon
Red Drum <i>Sciaenops ocellata</i>	Dr. R. D. Alexander	1953	46 0	Sandy Hook
Black Sea Bass <i>Centropristis striata</i>	Nick Ferrante	1958	6 2	
Striped Bass <i>Morone saxatilis</i>	Donald Zboyan	1970	68 0	Off Sandy Hook
Tautog (Blackfish) <i>Tautoga onitis</i>	R. N. Sheaffer	1954	21 6	Cape May
Bluefish <i>Pomatomus saltatrix</i>	Robert A. Gianni	1971	23 4	S. E. of Cape May
Atlantic Cod <i>Gadus morhua</i>	Joseph Chesla	1967	81 0	Brielle
Black Drum <i>Pogonias cromis</i>	Herschel Layton	1944	92 0	Delaware Bay
Summer Flounder (Fluke) <i>Paralichthys dentatus</i>	Walter B. Lubin	1953	19 12	Cape May
Pollack <i>Pollachius virens</i>	Philip Barlow	1964	43 0	Brielle
Shortfin Mako <i>Isurus oxyrinchus</i>	W. J. Mahan	1952	322 0	Elberon
Bluefin Tuna <i>Thunnus thynnus</i>	Ray Fromm	1950	787 0	Brielle
Wahoo* <i>Acanthocybium solanderi</i>	Dr. Wm. E. DiSanto	1969	93 10	Cape May
Weakfish <i>Cynoscion regalis</i>	A. Weisbecker, Jr.	1952	17 8	Mullica River
Blue Marlin <i>Makaira nigricans</i>	Joseph Teti, Jr.	1964	620 0	Atlantic City
White Marlin <i>Tetrapturus albidus</i>	Merrill P. Arden	1968	123 0	Ambrose Light
Dolphin <i>Coryphaena hippurus</i>	Yvonne DiSanto	1969	48 15	Cape May
Atlantic Bonito <i>Sarda sarda</i>	Frank G. Lykes, Jr.	1945	13 8	Sandy Hook
Broadbill Swordfish <i>Xiphias gladius</i>	Edmund Levitt	1964	530 0	Wilmington Canyon
Winter Flounder <i>Pseudopleuronectes Americanus</i>	Frank Coleman	1968	3 2	Great Egg Harbor
Cobia* <i>Rachycentron canadum</i>	Francis Eulner	1970	41 0	Shrewsbury Rocks
Scup (Porgy) <i>Stenotomus chrysops</i>	Ernest M. Ritchie	1967	4 6	Off Barnegat Light
Yellowfin Tuna* <i>Thunnus albacores</i>	Tony Keeley	1969	138 2	Hudson Canyon
Atlantic Mackerel <i>Scomber scombrus</i>	Rosemary Sackawicz	1969	3 0	Atlantic City
American Shad <i>Alosa sapidissima</i>	Rodger G. West	1967	7 0	Great Bay

* LESS COMMON SPECIES

Regulations for Recognition of New Jersey State Record Fish

1. Fish must be caught on sporting tackle, hooked, and landed by entrant.
2. All aspects of catch must conform to state law.
3. Length of fish should be measured from tip of jaw (with mouth closed) to tip of tail; girth, around fish at thickest portion.
4. An affidavit from the angler must be submitted on the above points and on the line test used.
5. Fish must be weighed on certified scale of a recognized sporting goods store, meat or fish market, fishing tournament, or other scales acceptable to conservation officer. An affidavit attesting veracity of scales and weight must be furnished by store manager, tournament director, or conservation officer.
6. A clear 8-inch x 10-inch black and white, glossy photograph of fish and angler *must be furnished*. In the case of freshwater fish, a yardstick must be held next to fish so as to clearly show length.
7. If any doubt exists regarding species, a statement from a state fisheries biologist must be sent, or fish preserved so as to permit inspection.
8. In the event fish is cleaned before weighing, only dressed weight will be counted.
9. Cooperation of angler is asked in submitting a brief account of how fish was caught, including type of lure and method of fishing used. It is understood that this information and picture may be used in NEW JERSEY OUTDOORS and state publicity, but angler's right to furnish information to news media is not otherwise restricted.
10. The above information, or other inquiries regarding record fish, should be sent to: Information and Education Section, Division of Fish, Game and Shell Fisheries, Box 1809, Trenton 08625. This Section will answer all inquiries and recognize clearcut Record Fish. In case of doubt, final decision will be made by the Fish and Game Council.

Efforts will be made to establish records for species not currently recognized. Anglers are especially urged to submit noteworthy catches of these species.

To submit information concerning possible record fish you may either use the forms on the following two pages or obtain forms from the Trenton office.

Anglers are invited to submit applications for possible record fish not included in the current listings.

State of New Jersey Department of Environmental Protection

Division of Fish, Game, and Shell Fisheries

Application for Recognition of New Jersey State Record Fish

TO: Information and Education Section

N. J. Division of Fish, Game, and Shell Fisheries

P. O. Box 1809

Trenton, N. J. 08625

I submit the following described fish for consideration as a New Jersey State Record: (Must be clearly printed or typewritten.)

Species _____ (Subject to verification by state biologist. Please attach information as to where fish may be inspected).

Date caught _____ Time _____ (approximate)

Place caught _____
(name of water) (nearest town)

_____ (boat, captain, if any and port)

_____ (county)

Weight _____ pounds, _____ ounces

Length _____ inches Girth _____ inches
(tip of jaw-mouth closed to tip of tail) (thickest portion)

Line test used _____ Type of line _____

Type of rod _____ Reel _____ Lure _____

I certify that the fish was caught on sporting tackle, hooked and landed by me, and that all aspects of the catch conformed to state law.

Subscribed and Sworn before me _____ Signature of Applicant

this _____ day of _____ Name printed or typewritten

Notary Public of N. J. _____ Address

My Commission expires _____ City & Zip Code

Enclosed herewith, find a certification of weight, clear 8-inch x 10-inch black and white glossy photo of myself and fish (with yardstick for freshwater species), and an account of how I caught the fish. It is understood that this picture and information may be used in state publicity (particularly **NEW JERSEY OUTDOORS**), but my rights to furnish this information to news media is not otherwise restricted.

_____ Signature of applicant

State of New Jersey Department of Environmental Protection

Division of Fish, Game, and Shell Fisheries

Certification of Weight of Proposed New Jersey State Record Fish

Must be printed or typewritten

I hereby certify that on _____,
(date)

I weighed a _____ that was brought in for weighing
(fish species)

by _____ I found the weight to be
(name of angler)
_____pounds _____ounces.

I am a (check one)

_____ Sporting goods store manager.

_____ Meat, fish or grocery market manager.

_____ Director or weighmaster of a recognized fishing tournament.

_____ Other weighing agent approved by conservation officer.
(Officer must sign here)

I further certify that the scales on which the fish was weighed were tested and their accuracy certified within the 12 months prior to this weighing by the Superintendent of Weights and Measures of _____ County.

_____	Signature of person weighing fish
Subscribed and sworn _____	Name printed or typewritten
before me this _____	Address (preferably business)
day of _____	(Street)
_____	(Town and/or post office)
Notary Public of N. J.	_____
My Commission expires _____	(Zip Code)
_____	_____

List of Delaware River Boat Access Sites

Name	Location	Facilities	Charge
Sussex County			
Bob's Beach	Milford, Pa.	Launch & Rent	Charge
Howard Angle	N. J. above Dingman's Ferry Bridge	Launch & Rent	Charge
Riverview Tavern	Dingman's Ferry, Pa.	Launch & Rent	Charge
Warren County			
Copper Mine Inn	7 mi. above Water Gap	Launch & Rent	Charge
Div. of Parks & Forests—Worthington Tract	4.5 mi. above Water Gap	Launch	Free
Div. of Parks & Forests—Worthington Tract	3.5 mi. above Water Gap	Cartop only	Free
Del. Water Gap Nat'l. Recreation Area	Kittatinny Point	Launch	Free
Gray's Service Sta.	Delaware, N. J.	Rent	Charge
Al's Fixit Shop	Rt. 46, Ramseyburg	Rent	Charge
Riverside Trailer Pk.	Belvidere	Launch	Charge
Belvidere Bridge	Belvidere	Launch	Free
S. S. Diana	Hutchison	Launch	Charge
Phillipsburg Municipal	Hampton St.	Launch	Free
Riegel Paper Co.	Riegelsville	Launch	Free
Hunterdon County			
Pa. Fish Comm.	Upper Black Eddy, Pa.	Launch	Free
Frenchtown	Sewage Treatment Plant	Launch	Free
Div. of Parks & Forests—Bull's Isl. Recr. Area	Raven Rock, N. J.	Launch	Free
Del. River Power Boat Assn.	Lambertville	Launch	Free
Mercer County			
Pa. Fish Comm.	Yardley, Pa.	Launch	Free
Mercer Co. Ramp	Lamberton St., Trenton	Launch	Free
Burlington County			
Bordentown Municipal	Bordentown	Launch	Charge for Permit
Curtin-Hope Marina	Burlington	Launch	Charge
Dan's Boat Yard	Delanco	Launch	Charge
Camden County			
Joe's Marina	Creek Rd.—Bellmawr	Launch	Charge
Gloucester County			
Halscheid's Ramp	Almonesson Rd., Westville	Launch	Charge
National Park Marina	National Park, N. J.	Launch	Charge
Sweeten's Dock	Mantua Cr., Mount Royal	Launch	Charge
Mullen's Dock	Rt. 130, Bridgeport	Launch	Charge
Bridgeport Boat Yard	Rt. 322, Bridgeport	Launch	Charge
Oldman's Cr. Marina	Rt. 130, Nortonville	Launch	Charge
Salem County			
Marina	Pennsville	Launch	Charge
Salem (Several ramps)	Salem River and Cove	Launch	Charge
Alpha Marina	Hancocks Bridge, N. J.	Launch	Charge
Div. of Fish, Game, and Shell Fisheries	Stow Neck Rd., Canton	Launch	Free
Mad Horse Cr. Wildlife Mgt. Area			

When to Fish

By A. Bruce Pyle

Assistant Chief, Bureau of Fisheries Management

Good fishing is where you find it. Its ingredients include an adequate supply of fish, angler skill, acceptable environmental conditions, the willingness of fish to cooperate, etc. etc. Each angler has his particular standards for quality fishing. But, regardless of what they are, it requires a coordinated effort by the angler, Mother Nature, and, of increasing importance, the productive management efforts of man for them to be realized.

Table a Guide

The table accompanying this is intended as a guide to assist the angler in selecting the direction of his efforts. It represents the relative monthly availability of individual species; it does not represent a comparison of species availability. It is based upon the general pattern of availability over a multi-year period and because of this, care should be taken when using it to make adjustments in accordance with annual abundance of the species being sought and variability in climatic conditions.

Exploratory Fishing

Exploratory fishing can be rewarding. But, if you require some prior assurance about the potential success of your fishing trip, information on the efforts and successes of others can readily be obtained via newspapers, radio, and special publications.

Exploratory fishing to develop new techniques where others have been inadequate and to find available, but unexploited populations of fishes, can be particularly rewarding. Every once in a while a new fishery is developed by someone looking into new possibilities. Such was the case with the now famous winter white perch fishery at Collin's Cove on the Mullica River. Look around, study the habits of fishes, find out where they are or are most likely to be under any given conditions, and apply your ingenuity to develop techniques for catching them. Productive new techniques will be welcomed by other anglers and the harvest of previously unexploited or underfished populations will be a worthwhile contribution to the wise use of this renewable natural resource.

Whatever your approach, good luck!

#

Relative Angling Opportunities for the Major Angled-for New Jersey Fishes

Key: E - Excellent; G - Good; F - Fair; A - Available; C - Closed to Angling by Regulation

Anadromous, Euryhaline, and Freshwater Species	Where Found						January	February	March	April	May	June	July	August	September	October	November	December
	Ocean	Estuary	Rivers	Streams	Two-story Lakes	Lakes & Ponds												
Alewife			x	x					G	E	G							
Brook trout 1/			x	a	x	x	A	A	A/C	C/E	E	F	F	F	F	G	G	A
Brown trout 1/			b	x	a	x	A	A	A/C	C/E	E	E	G	G	G	G	F	A
Carp			c	x	x	x					E	E	G	G	G	G	A	
Catfishes 2/			c	x	x	x	A	A	A	F	G	G	E	G	G	G	F	A
Crappie						x			F	E	E	F	F	F	F	A		
Largemouth bass			c	x	x	x	A	A	A	A	E	E	G	G	G	G	F	A
Pickereel			d	x	x	x	E	G	G	G	E	E	G	G	G	G	F	A
Rainbow trout 1/			b	x	x	x	A	A	A/C	C/E	E	G	F	A	A	A	A	A
Shad 3/				x						G	E	F						
Smallmouth bass				x	x	x				F	E	E	F	F	G	E	G	
Suckers			c	x	x		A	A	G	E	G	A	A	A	A	A	A	A
Sunfishes			c	x	x	x				G	E	E	G	F	F	A	A	
Walleye 3/				x					G	E	G	F	A	A	A	F	G	G
White perch			x	x		x	G	F	G	G	E	G	F	F	F	G	F	G
Yellow perch			d	x	x	x	Ge	Ge	F	Ef	Ef	G	F	F	F	F	G	A
Salt Water Species																		
Albacore	x												F	G	E	G		
Blackfish	x	x							F	E	G	F	F	E	G	F		
Blowfish	x	x							F	E	G	G	F	F				
Bluefish	x	x								G	G	G	E	E	F			
Bonita	x											F	E	G				
Cod							F	F	G	F							F	G
Croaker	x	x										F	E	F				
Dolphin	x														F	F		
Drum	x	x									E	E	F	F				
Flounder		x					F	F	G	E	F						F	G
Fluke	x	x								F	G	E	E	G	F			
Kingfish	x	x									F	E	E	G	F			
Red hake (ling)	x						F	F	G	G	F	F		F	G	G	G	
Mackerel	x								F	E				F	E			
Porgy	x	x								F	G	E	E	G				
Sea bass	x	x							F	G	E	E	E	G	F			
Spot		x									F	G	E	F				
Striped bass	x	x					C	C	A	G	E	G	F	F	G	E	E	A
Tuna	x											F	E	G				
Weakfish	x	x									F	G	E	G	F			
Silver hake (whiting)	x						F	F	G	G	F				F	G	G	

1/ Stocked during March, April, May, and sometimes into June (See Annual Compendium of Fishing Laws for list of trout stocked waters).

2/ Includes channel catfish, white catfish, brown bullhead, and yellow bullhead. Channel catfish limited to the Delaware River where they are native and a small number of lakes and ponds where they have been stocked.

3/ Delaware River only

a. Native fish also present.

b. Present on occasion as the result of stocking or the drift from upstream stocking.

c. Freshwater areas only.

d. Fresh and slightly brackish waters only.

e. Through the ice at ponds and lakes.

f. Extraordinary opportunity in gateholes and streams upstream of tidal waters where populations exist.

Tuckahoe-Corbin City Tract

Atlantic and Cape May Counties

The Tuckahoe-Corbin City Fish and Wildlife Management Area, is one of the oldest areas owned by the Division. Purchase of 12,377 acres was begun in 1933. In 1965, under the Green Acres Program, 61 additional acres were added to the tract. Today the area contains 12,438 acres in Atlantic and Cape May Counties.

The tract is located east of Tuckahoe on Route 50. There are six impoundments in addition to managed areas for many game species.

Office

The office or headquarters is located on a double lane, off Tuckahoe-Marmora Road.

Upland Game

There is excellent hunting, because of the management employed, for rabbit, quail, squirrel, and woodcock on this tract. In addition, pheasants and supplemental quail are stocked prior to and during the season.

Deer

This area is natural deer range, and a large herd is found on the tract. Bow hunters and shotgun hunters find it to be an excellent area.

Waterfowl

The salt marsh and waterfowl impoundments are excellent duck and goose wintering areas. Black ducks, teal, wood ducks, and mallards are the species most frequently found on this tract. The Tuckahoe-Corbin City tract provides some of the finest waterfowl hunting in the state.

Fishing

There is excellent fresh and salt water fishing on the tract. The principal fresh water species are largemouth bass, pickerel, yellow perch, white perch, and sunfish. In salt water, the major species are white perch and striped bass.

Launching Ramp

An excellent boat ramp is located on the Tuckahoe portion of the tract. It provides access to Great Egg Harbor River and Bay.

This area is being maintained by the Division for the licensed sportsmen of the state, although many citizens make use of it for other forms of outdoor recreation. Its program is financed by hunting and fishing license money of the sportsmen. #

SYMBOLS

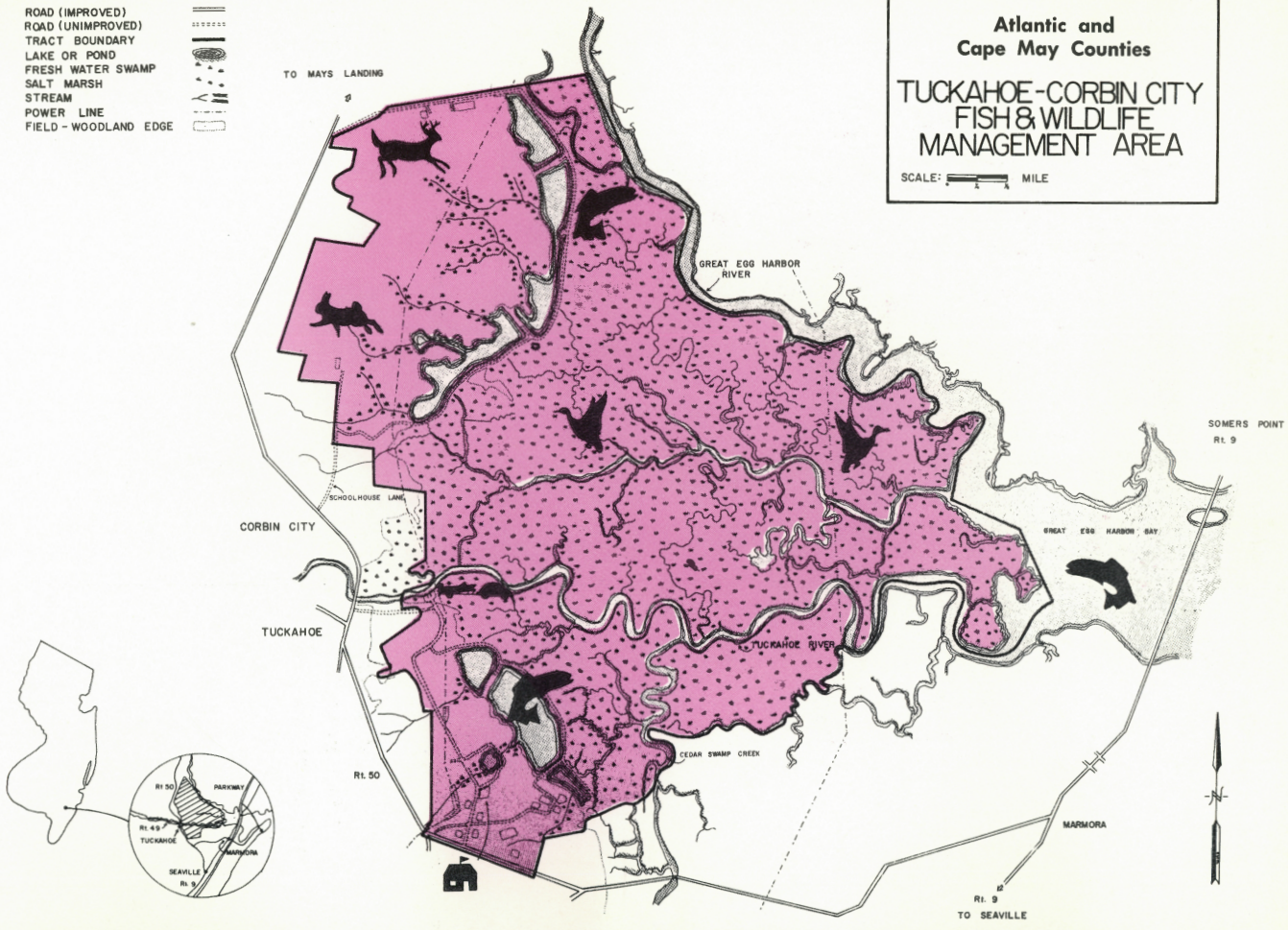
- ROAD (IMPROVED)
- ROAD (UNIMPROVED)
- TRACT BOUNDARY
- LAKE OR POND
- FRESH WATER SWAMP
- SALT MARSH
- STREAM
- POWER LINE
- FIELD - WOODLAND EDGE



**Atlantic and
Cape May Counties**

**TUCKAHOE-CORBIN CITY
FISH & WILDLIFE
MANAGEMENT AREA**

SCALE: MILE



FREE PUBLIC LIBRARY
TRENTON, NEW JERSEY

AUG 8 1972

REFERENCE
DEPARTMENT

**NATIONAL
HUNTING &
FISHING DAY**

September 23, 1972

**New Jersey Outdoors
P. O. Box 1809
Trenton, N. J. 08625**

*Second class postage
paid at Trenton, N. J.
and additional office.*