

October 2023 Traffic Report

AVIATION DEPARTMENT (Data As Of 12/1/2023 8:21:46 AM)

REGION



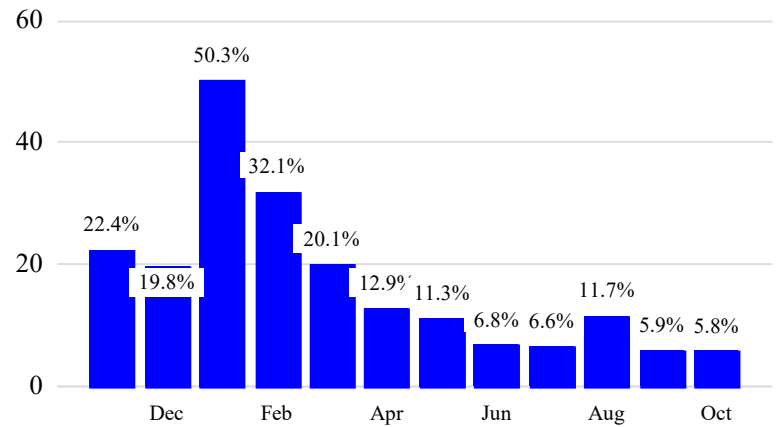
Revenue Passengers

	Curr Month	% Change
	12,404,777	5.8% ▲
Domestic	8,258,720	1.5%
International	4,146,057	15.6%
Non-Revenue	331,912	0.1%

Load Factors	Curr Month
Domestic	84.3%
International	81.6%

83.3% Avg Load Factor

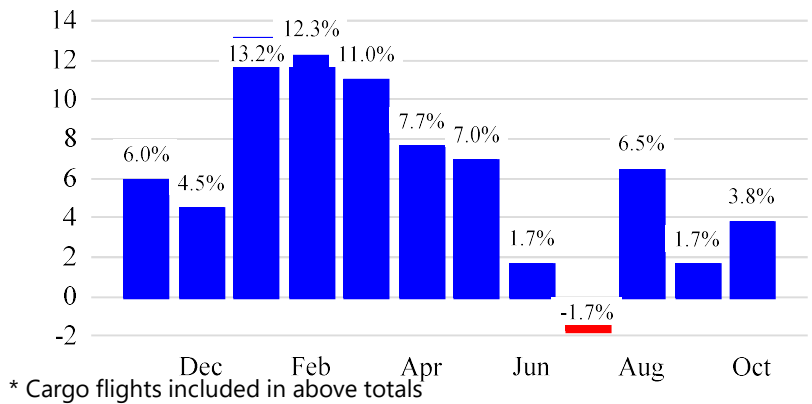
Year over Year % Change in Revenue Passengers - 12 Months



Total Flights

	Curr Month	% Change
	111,703	4.0% ▲
Excl GA	105,790	3.8% ▲
Domestic	79,233	-0.9%
International	26,557	21.2%
Gen Aviation	5,913	6.7%
Cargo Flights*	3,457	4.6%

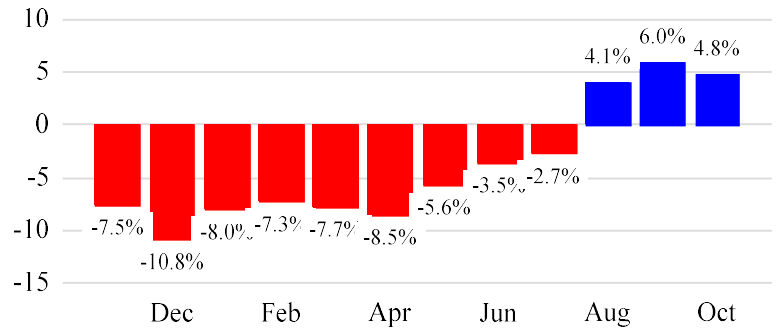
Year over Year % Change in Total Flights (Excl GA) - 12 Months



Cargo (Short Tons)

	Curr Month	% Change
	210,078	4.8% ▲
Domestic	86,069	2.7%
International	124,009	6.3%
Mail	7,165	-37.3%

Year over Year % Change in Cargo - 12 Months



Top 5 Declines in Revenue Passengers by Airline

Airline	Pax Decline	% Decline
JETBLUE AIRWAYS	(159,443)	-9.0%
AMERICAN	(120,357)	-8.0%
SINGAPORE AIRLINES	(7,493)	-19.0%
WESTJET	(5,968)	-28.0%
FINNAIR	(4,692)	-24.0%

Top 5 Increases in Revenue Passengers by Airline

Airline	Pax Increase	% Increase
DELTA	342,300	13.0%
UNITED	235,606	8.0%
SPIRIT AIRLINES	50,794	14.0%
Air Canada	37,889	29.0%
CATHAY PACIFIC	28,038	209.0%

Airport Summary Statistics

JFK Summary

	Current Month	YoY %
Total Revenue Pax	5,263,757	4.0
Total Flights Including GA	40,797	3.0
Total Cargo (Short Tons)	146,459	8.4

EWR Summary

	Current Month	YoY %
Total Revenue Pax	4,252,519	7.0
Total Flights Including GA	37,137	7.0
Total Cargo (Short Tons)	61,034	-2.6

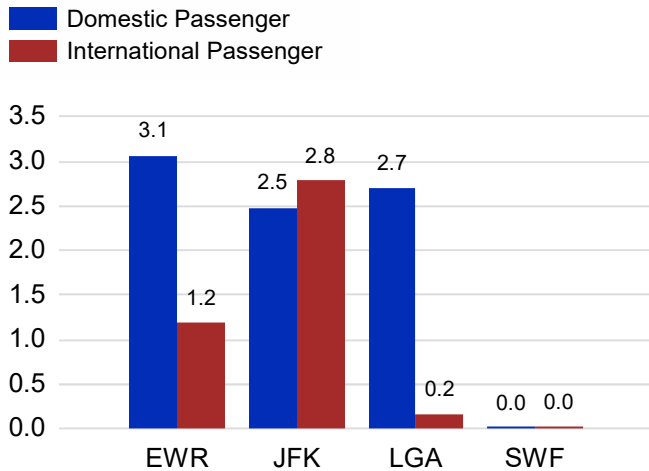
LGA Summary

	Current Month	YoY %
Total Revenue Pax	2,868,412	6.0
Total Flights Including GA	31,294	1.0
Total Cargo (Short Tons)	496	-13.4

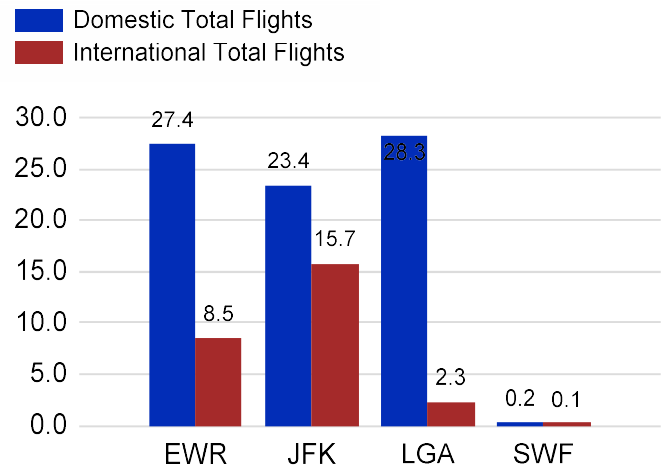
SWF Summary

	Current Month	YoY %
Total Revenue Pax	20,089	-22.0
Total Flights Including GA	2,475	7.0
Total Cargo (Short Tons)	2,090	5.9

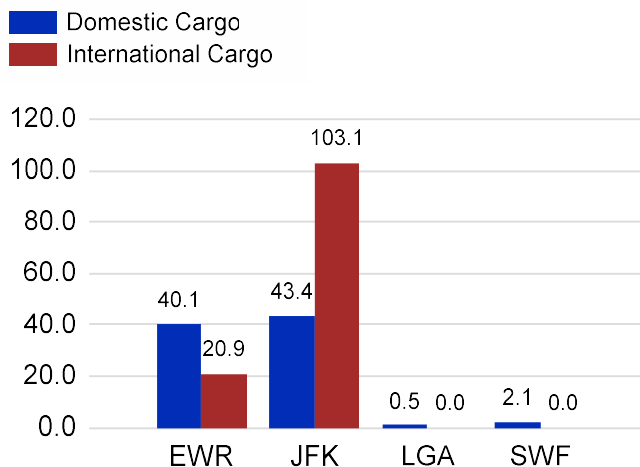
Total Passengers by Airport (Millions)



Total Flights by Airport (Thousands)



Total Cargo by Airport (Thousands of Short Tons)



12 Months Ending Passenger & Freight Statistics

Top 20 Airlines Ranking by Passengers & Freight: 12 Months Ending Oct 2023

Airline Name	Domestic	International	Total Pax	% of Tot	Airline Name	Short Tons	% of Tot
UNITED	27,371,809	8,126,980	35,498,789	24.81%	FEDERAL EXPRESS	371,679	16.37%
DELTA	26,758,708	6,195,590	32,954,298	23.03%	UNITED PARCEL	195,029	8.59%
JETBLUE AIRWAYS	15,710,506	6,570,479	22,280,985	15.57%	UNITED	179,810	7.92%
AMERICAN	13,842,920	3,632,977	17,475,897	12.21%	DELTA	101,370	4.47%
SPIRIT AIRLINES	4,576,831	0	4,576,831	3.20%	KALITTA AIR LLC	98,303	4.33%
SOUTHWEST AIRLINES	3,122,265	0	3,122,265	2.18%	AMERICAN	83,813	3.69%
ALASKA AIRLINES	2,434,149	0	2,434,149	1.70%	AIR TRANSPORT INT'L.(BAX Inc.)	76,734	3.38%
Air Canada	0	1,750,079	1,750,079	1.22%	ATLAS AIR	69,822	3.08%
BRITISH AIRWAYS	0	1,636,528	1,636,528	1.14%	BRITISH AIRWAYS	53,111	2.34%
AIR FRANCE	313	1,208,681	1,208,994	0.84%	KOREAN	49,693	2.19%
EMIRATES AIRLINES	0	1,098,715	1,098,715	0.77%	CARGOLUX AIRLINES	47,151	2.08%
VIRGIN ATLANTIC	0	1,013,723	1,013,723	0.71%	ABX AIR INC	46,282	2.04%
Avianca Costa Rica	0	884,162	884,162	0.62%	CATHAY PACIFIC	45,921	2.02%
LUFTHANSA CARGO	0	856,892	856,892	0.60%	CHINA AIRLINES (CAL)	45,117	1.99%
AER LINGUS	0	746,074	746,074	0.52%	VIRGIN ATLANTIC	36,084	1.59%
TURKISH AIR	0	739,521	739,521	0.52%	LUFTHANSA CARGO	31,871	1.40%
EL AL	76	587,868	587,944	0.41%	ASIANA	31,210	1.37%
LAN PERU	0	553,115	553,115	0.39%	AIR CHINA (CARGO)	31,121	1.37%
SAS	0	552,271	552,271	0.39%	AIR FRANCE	29,340	1.29%
IBERIA	0	548,954	548,954	0.38%	TURKISH AIR	28,813	1.27%

Passengers & Freight by Market - 12 Months Ending

Market	Passengers	Freight (Short Tons)
TRANSATLANTIC	26,325,922	837,764
CANADA	4,190,508	8,419
CARIBBEAN + BERMUDA	8,377,264	11,563
CENTRAL AND SOUTH AMERICA	4,262,292	59,831
DOMESTIC	92,390,342	956,294
MEXICO	2,420,895	11,680
TRANSPACIFIC	2,635,278	376,321
PUERTO RICO	2,507,459	8,060

Additional Data

Airline Schedules (ADI): Non-Stop Destinations

	Region	Flights (Daily)	Cities
Domestic	Domestic	2417.3	106
	Puerto Rico	28.9	3
	Total	2,446.2	109.00
International	Canada	188.6	8
	Caribbean & Bermuda	136.8	22
	Central & South America	68.0	17
	Mexico	36.8	6
	Transatlantic	359.4	59
	Transpacific	36.1	11
	Total	825.6	123.00
Total		3,271.8	232.00

Airline Schedules (ADI): Carriers & Aircraft Type

	Aircraft Type	Flights (Daily)	Carriers
Domestic	Commuter	897.5	4
	Narrow Body	1491.3	10
	Wide Body	57.4	4
	Total	2,446.2	18.00
International	Commuter	160.9	5
	Narrow Body	296.5	21
	Wide Body	368.3	56
	Total	825.6	82.00
Total	Total	3,271.8	100.00

Passenger Demographics (ACI ASQ Surveys - 2021)

Connect		Trip Type		Gender	
Local Origin/Destination	78.6%	Business	14.0%	M	49.6%
Connecting	21.4%	Leisure	86.0%	F	50.4%
Transport Mode		Annual Flights		Residency	
Bus/Shuttle	4.7%	1-2	61.5%	United States	81.0%
Other	18.7%	3-5	24.9%	Other	19.0%
Private/Company Car	37.5%	6-10	9.0%		
Rail/Subway	7.3%	11-20	2.8%		
Rental Car	4.6%	21+	1.8%		
Taxi/Limo	27.2%				

Ground Transportation

	Curr Month	% Change		Curr Month	% Change
<i>Paid Parked Cars</i>	300,384	-16.6	<i>Total Air Train Passengers</i>	2,632,403	15.5
<i>GTC Bookings</i>	0		<i>Paid Howard Beach Passengers</i>	114,479	-7.8
<i>Airport Coach Passengers</i>	34,414	-8.7	<i>Paid Jamaica Passengers</i>	569,608	12.0
<i>Taxis Dispatched</i>	364,231	-6.7	<i>Paid EWR Passengers</i>	240,128	11.0
			<i>On-Airport (Unpaid) Passengers</i>	1,708,188	19.4

Airlines for American Carriers (USA)

	Curr Month	% Change
<i>Freight:revenue ton miles (000)</i>	0	

Regional Airports: Other

	Curr Month	% Change
<i>TEB flight movements</i>	15,955	1.8
<i>ISP Total passengers</i>	100,015	20.8
<i>HPN Total passengers</i>	185,935	10.6